

Rev	App	Ckd	Revision or reason for issue	Date	Legend
A	PB	PVR	Stage 2 DA Draft	29-06-18	
B	PB	PVR	Stage 2 DA Draft	06-07-18	
C	PB	PVR	Stage 2 DA Draft	18-07-18	
D	PB	PVR	Stage 2 DA	03-08-18	
E	PB	PVR	Stage 2 DA	07-08-18	
F	PB	PVR	Stage 2 DA	22-08-18	

Date	Legend
29-06-18	
06-07-18	
18-07-18	
03-08-18	
07-08-18	
22-08-18	

CSST Areas (not for approval)

CSST detail is indicative and subject to separate approval.

Final OSD detail on station levels is subject to issue of the relevant construction certificate and approved Station Design and Precinct Plan.

Scale / North Point

1:200 @ A1, 1:400 @ A3

General Notes

Do not scale from drawing. Use marked dimensions. To be read in conjunction with all other Consultant's drawings. The Architect to be immediately notified of any discrepancies. Copyright on this drawing retained by the Architect.

Notes

This architectural package describes the North Tower. Refer to Grimshaw for Metro and Trains for South Tower

Disclaimer

Street trees, furniture and other public domain elements within the precinct are indicative only and are subject to relevant approvals and detailed coordination with new and existing underground utilities and infrastructure.

Authoring Organisation

GRIMSHAW

Grimshaw
Level 2, 333 George Street, Sydney
New South Wales 2000 Australia

Telephone + +61 2 9253 0200
Email info@grimshaw-architects.com

Architect

**JPW
JOHNSON PILTON WALKER**

Johnson Pilton Walker Pty Ltd ACN 095 778 886
Level 10 Plaza Building Australia Square 95 Pitt Street Sydney
New South Wales 2000 Australia

Telephone +61 2 9259 5900
Email jpw@jpw.com.au

Project Title

**SYDNEY METRO MARTIN PLACE -
integrated station development**



Client
Macquarie Group Ltd
50 Martin Place, Sydney
New South Wales 2000 Australia

Telephone +61 2 8232 3333
Email: www.macquarie.com

Drawing Title

**SYDNEY METRO - MARTIN PLACE
LEVEL 39 PLAN
GENERAL ARRANGEMENT**

Status
STAGE II SSDA
Drawing Number
CSWSMP-MAC-SMN-AT-DRG-DA-303900

Revision

F

Rev	App	Ckd	Revision or reason for issue	Date	Legend
A	PB	PVR	Stage 2 DA Draft	29-06-18	
B	PB	PVR	Stage 2 DA Draft	08-07-18	
C	PB	PVR	Stage 2 DA Draft	18-07-18	
D	PB	PVR	Stage 2 DA	03-08-18	
E	PB	PVR	Stage 2 DA	07-08-18	
F	PB	PVR	Stage 2 DA	22-08-18	

Date	Legend
29-06-18	
08-07-18	
18-07-18	
03-08-18	
07-08-18	
22-08-18	

CSST Areas (not for approval)

CSST detail is indicative and subject to separate approval.

Final OSD detail on station levels is subject to issue of the relevant construction certificate and approved Station Design and Precinct Plan.

Scale / North Point

1:200 @ A1, 1:400 @ A3

General Notes

Do not scale from drawing. Use marked dimensions. To be read in conjunction with all other Consultant's drawings. The Architect to be immediately notified of any discrepancies. Copyright on this drawing retained by the Architect.

Notes

This architectural package describes the North Tower. Refer to Grimshaw for Metro and Trains for South Tower

Disclaimer

Street trees, furniture and other public domain elements within the precinct are indicative only and are subject to relevant approvals and detailed coordination with new and existing underground utilities and infrastructure.

Authoring Organisation

GRIMSHAW

Grimshaw
Level 2, 333 George Street, Sydney
New South Wales 2000 Australia

Telephone ++ 61 2 9253 0200
Email info@grimshaw-architects.com

Architect

**JPW
JOHNSON PILTON WALKER**

Johnson Pilton Walker Pty Ltd ACN 095 778 886
Level 10 Plaza Building Australia Square 95 Pitt Street Sydney
New South Wales 2000 Australia

Telephone +61 2 9259 5900
Email jpw@jpw.com.au

Project Title

**SYDNEY METRO MARTIN PLACE -
integrated station development**



Client
Macquarie Group Ltd
50 Martin Place, Sydney
New South Wales 2000 Australia

Telephone +61 2 8232 3333
Email: www.macquarie.com

Drawing Title

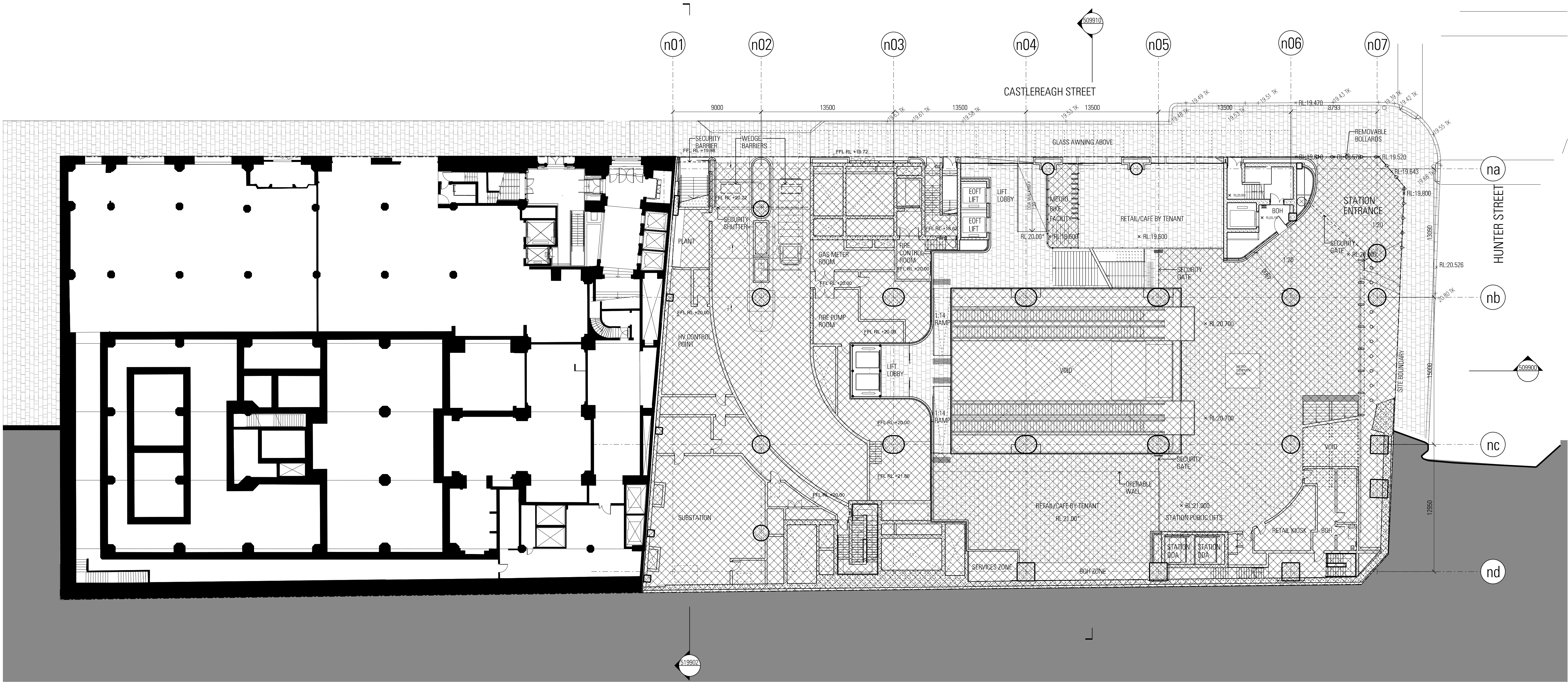
**SYDNEY METRO - MARTIN PLACE
ROOF PLAN
GENERAL ARRANGEMENT**

Status Revision

STAGE II SSDA F

Drawing Number

CSWSMP-MAC-SMN-AT-DRG-DA-305000



CSWSMP-MAC-SMN-AT-DRG-DA-308000.dwg
23/09/18
2:33 PM

Rev	App	Ckd	Revision or reason for issue	Date	Legend
A	PB	PVR	Stage 2 DA Draft	29-06-18	
B	PB	PVR	Stage 2 DA Draft	06-07-18	
C	PB	PVR	Stage 2 DA Draft	18-07-18	
D	PB	PVR	Stage 2 DA	03-08-18	
E	PB	PVR	Stage 2 DA	07-08-18	
F	PB	PVR	Stage 2 DA	08-08-18	
G	PB	PVR	Stage 2 DA	22-08-18	

CSWI Areas (not for approval)

CSWI detail is indicative and subject to separate approval.

Final OSD detail on station levels is subject to issue of the relevant construction certificate and approved Station Design and Precinct Plan.

Scale / North Point

1:200 @ A1, 1:400 @ A3

General Notes

Do not scale from drawing. Use marked dimensions. To be read in conjunction with all other Consultant's drawings. The Architect to be immediately notified of any discrepancies. Copyright on this drawing retained by the Architect.

Notes

This architectural package describes the North Tower. Refer to Grimshaw for Metro and Tzannes for South Tower

Disclaimer

Street trees, furniture and other public domain elements within the precinct are indicative only and are subject to relevant approvals and detailed coordination with new and existing underground utilities and infrastructure.

Authoring Organisation

GRIMSHAW

Grimshaw
Level 2, 333 George Street, Sydney
New South Wales 2000 Australia

Telephone + +61 2 9253 0200
Email info@grimshaw-architects.com

Architect

**JPW
JOHNSON PILTON WALKER**

Johnson Pilton Walker Pty Ltd ACN 095 778 886
Level 10 Plaza Building Australia Square 95 Pitt Street Sydney
New South Wales 2000 Australia

Telephone +61 2 9259 5900
Email jpww@jpww.com.au

Project Title

**SYDNEY METRO MARTIN PLACE -
Integrated station development**



Client
Macquarie Group Ltd
50 Martin Place, Sydney
New South Wales 2000 Australia

Telephone +61 2 8232 3333
Email: www.macquarie.com

Drawing Title

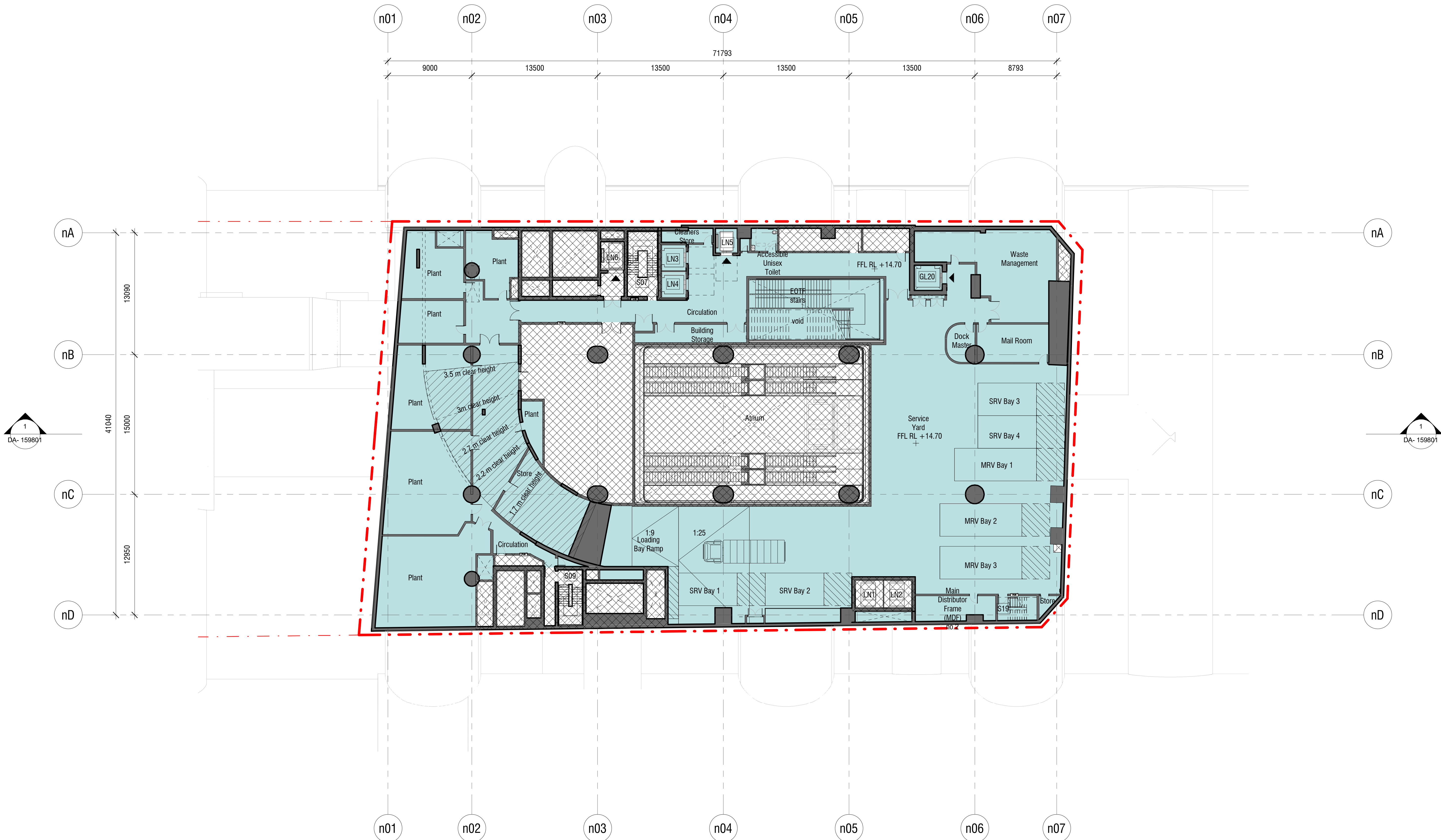
**SYDNEY METRO - MARTIN PLACE
LOWER GROUND PLAN - CASTLEREAGH STREET
GENERAL ARRANGEMENT**

Status
STAGE II SSDA

Drawing Number
CSWSMP-MAC-SMN-AT-DRG-DA-308000

Revision

G



Rev	App	Ckd	Revision or reason for issue	Date
0	AC	MC	STAGE II SSDA - DRAFT ISSUE	29.06.2018
1	AC	MC	STAGE II SSDA - DRAFT ISSUE	30.07.2018
2	AC	MC	STAGE II SSDA - DRAFT ISSUE	03.08.2018
3	AC	MC	STAGE II SSDA - DRAFT ISSUE	07.08.2018
4	AC	MC	STAGE II SSDA - DRAFT ISSUE	09.08.2018
A	AC	MC	STAGE II SSDA - DRAFT ISSUE	10.08.2018
B	AC	MC	STAGE II SSDA	23.08.2018

Legend
CSSI Areas (not for approval)
Site Boundary
SSDA areas below-ground

Scale / North Point

1:200 @ A1, 1:400 @ A3

0 2 4 6 10

General Notes

Do not scale from drawing. Use marked dimensions. To be read in conjunction with all other Consultant's drawings. The Architect to be immediately notified of any discrepancies. Copyright on this drawing retained by the Architect.

Notes

This architectural package describes metro-related areas. Refer to Tzannes for South OSD and JPW for North OSD.

CSSI detail is indicative and subject to separate approval.

Final OSD detail on station levels is subject to issue of the relevant construction certificate and approved Station Design and Precinct Plan

Street trees, furniture, and other public domain elements within the precinct are indicative only and are subject to relevant approvals and detailed coordination with new and existing underground utilities and infrastructure.

Authoring Organisation

GRIMSHAW

Grimshaw
Level 2, 333 George Street, Sydney
New South Wales 2000 Australia

Telephone +61 2 9253 0200
Email info@grimshaw-architects.com

Architect

**JPW
JOHNSON PILTON WALKER**

Johnson Pilton Walker Pty Ltd ACN 095 778 886
Level 10 Plaza Building Australia Square 95 Pitt Street Sydney
New South Wales 2000 Australia

Telephone +61 2 9259 5900
Email jpw@jpw.com.au

Project Title

**SYDNEY METRO MARTIN PLACE -
integrated station development**

Client
Macquarie Group Ltd
50 Martin Place, Sydney
New South Wales 2000 Australia

Telephone +61 2 8232 3333
Email: www.macquarie.com

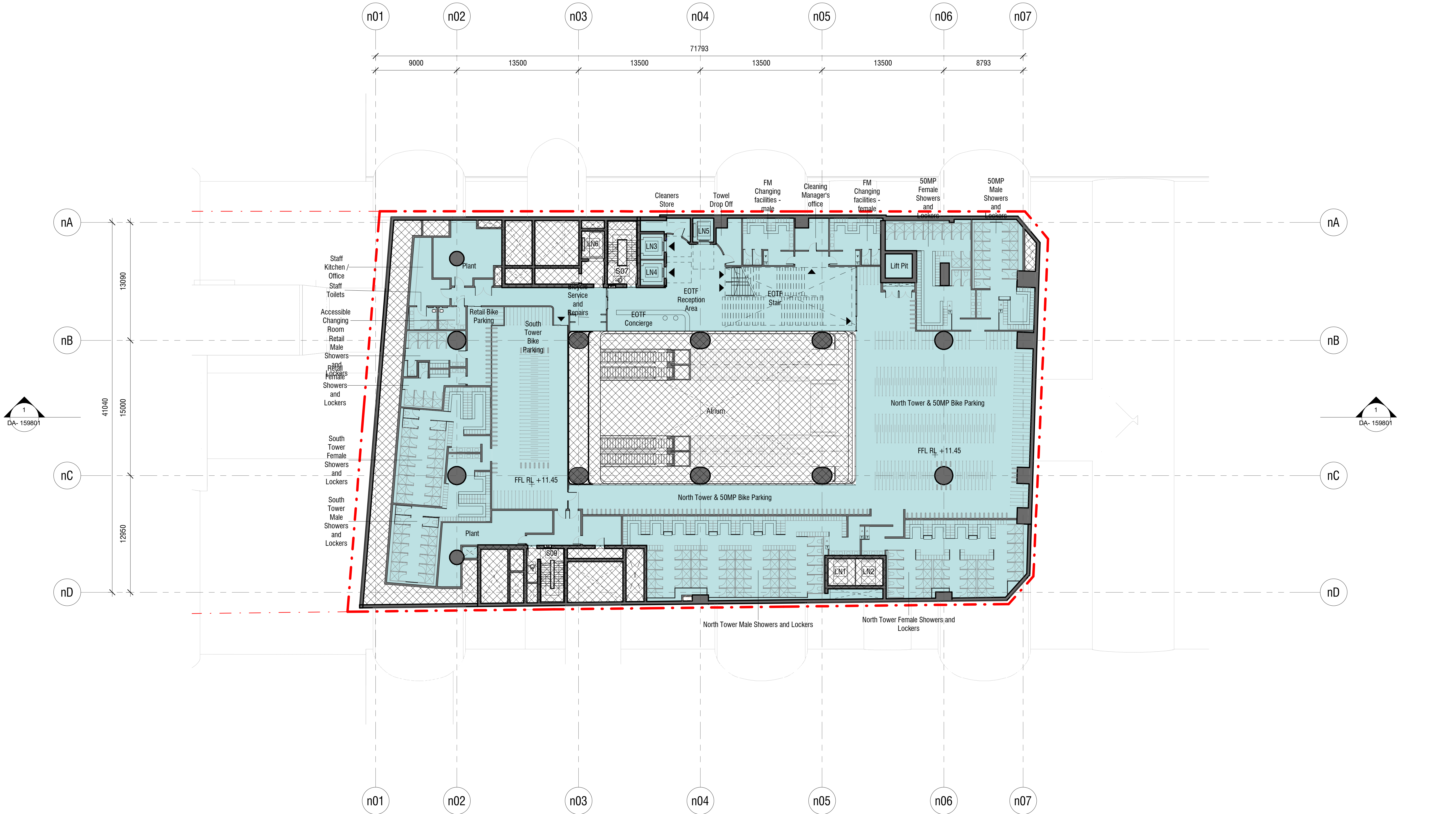
Drawing Title

LEVEL B1 PLAN - SERVICE YARD

Status
STAGE II SSDA

Drawing Number
CSWSMP- MAC- SMN- AT- DRG- DA- 308100_B

Revision
B



Rev	App	Ckd	Revision or reason for issue	Date
0	AC	MC	STAGE II SSDA - DRAFT ISSUE	29.06.2018
1	AC	MC	STAGE II SSDA - DRAFT ISSUE	30.07.2018
2	AC	MC	STAGE II SSDA - DRAFT ISSUE	03.08.2018
3	AC	MC	STAGE II SSDA - DRAFT ISSUE	09.08.2018
A	AC	MC	STAGE II SSDA - DRAFT ISSUE	10.08.2018
B	AC	MC	STAGE II SSDA	23.08.2018

Legend
CSI Areas (not for approval)
Site Boundary
SSDA areas below-ground

Scale / North Point

1:200 @ A1, 1:400 @ A3

0 2 4 6 10

General Notes

Do not scale from drawing. Use marked dimensions. To be read in conjunction with all other Consultant's drawings. The Architect to be immediately notified of any discrepancies. Copyright on this drawing retained by the Architect.

Notes

This architectural package describes metro-related areas. Refer to Tzannes for South OSD and JPW for North OSD.

CSI detail is indicative and subject to separate approval.

Final OSD detail on station levels is subject to issue of the relevant construction certificate and approved Station Design and Precinct Plan

Street trees, furniture, and other public domain elements within the precinct are indicative only and are subject to relevant approvals and detailed coordination with new and existing underground utilities and infrastructure.

Authoring Organisation

GRIMSHAW

Grimshaw
Level 2, 333 George Street, Sydney
New South Wales 2000 Australia

Telephone +61 2 9253 0200
Email info@grimshaw-architects.com

Architect

**JPW
JOHNSON PILTON WALKER**

Johnson Pilton Walker Pty Ltd ACN 095 778 886
Level 10 Plaza Building Australia Square 95 Pitt Street Sydney
New South Wales 2000 Australia

Telephone +61 2 9259 5900
Email jpww@jpww.com.au

Project Title

**SYDNEY METRO MARTIN PLACE -
integrated station development**

Client

Macquarie Group Ltd
50 Martin Place, Sydney
New South Wales 2000 Australia

Telephone +61 2 8232 3333
Email www.macquarie.com

Drawing Title

**LEVEL B2 PLAN - END-OF-TRIP
FACILITY**

Status

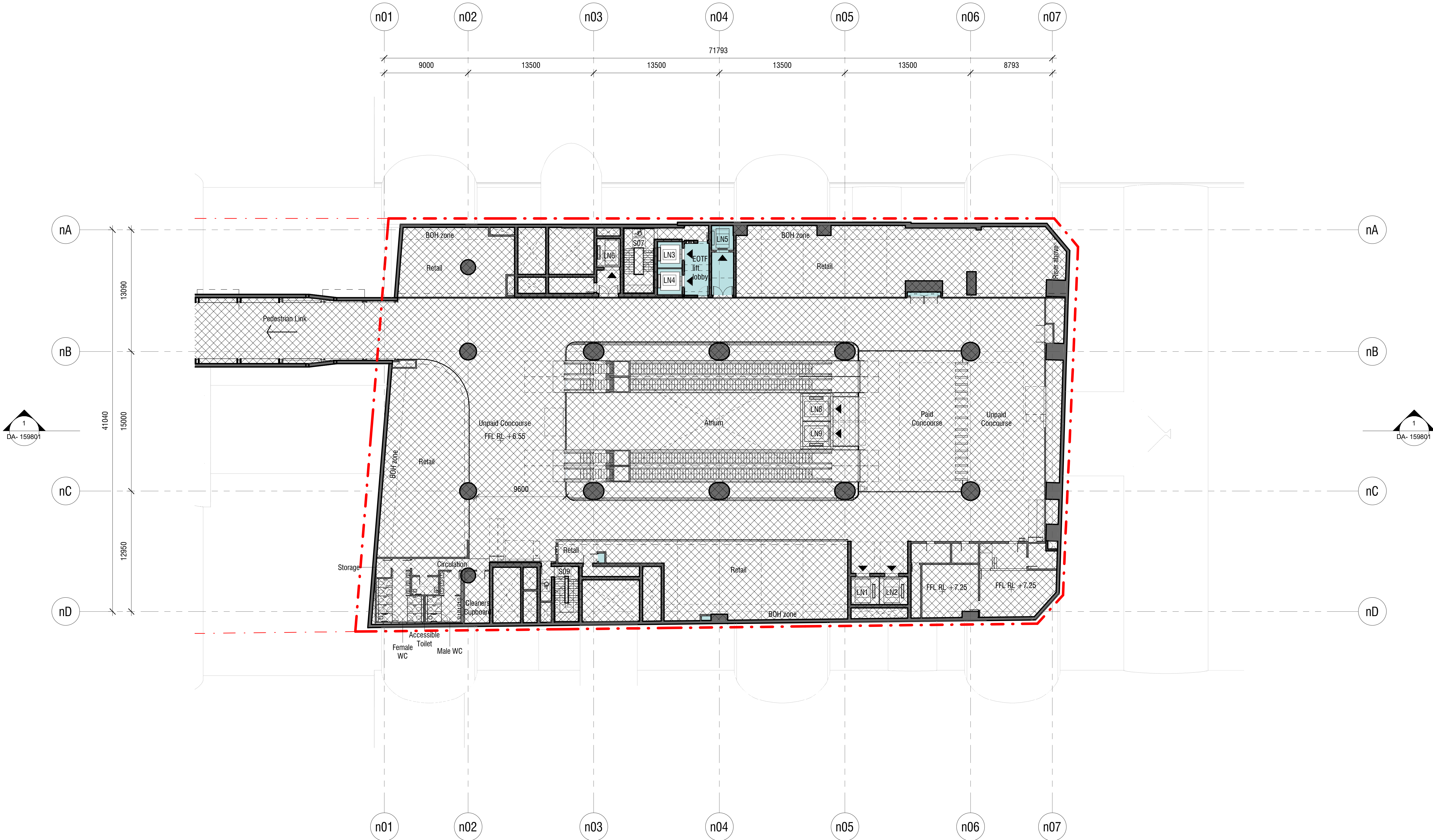
STAGE II SSDA

Drawing Number

CSWSMP- MAC- SMN- AT- DRG- DA- 308200_B

Revision

B



Rev	App	Ckd	Revision or reason for issue	Date
0	AC	MC	STAGE II SSDA - DRAFT ISSUE	29.06.2018
1	AC	MC	STAGE II SSDA - DRAFT ISSUE	30.07.2018
2	AC	MC	STAGE II SSDA - DRAFT ISSUE	03.08.2018
3	AC	MC	STAGE II SSDA - DRAFT ISSUE	07.08.2018
4	AC	MC	STAGE II SSDA - DRAFT ISSUE	09.08.2018
A	AC	MC	STAGE II SSDA - DRAFT ISSUE	10.08.2018
B	AC	MC	STAGE II SSDA	23.08.2018

Legend
CSI Areas (not for approval)
Site Boundary
SSDA areas below-ground

Scale / North Point

1:200 @ A1, 1:400 @ A3

0 2 4 6 10

General Notes

Do not scale from drawing. Use marked dimensions. To be read in conjunction with all other Consultant's drawings. The Architect to be immediately notified of any discrepancies. Copyright on this drawing retained by the Architect.

Notes

This architectural package describes metro-related areas. Refer to Tzannes for South OSD and JPW for North OSD.

CSI detail is indicative and subject to separate approval.

Final OSD detail on station levels is subject to issue of the relevant construction certificate and approved Station Design and Precinct Plan

Street trees, furniture, and other public domain elements within the precinct are indicative only and are subject to relevant approvals and detailed coordination with new and existing underground utilities and infrastructure.

Authoring Organisation

GRIMSHAW

Grimshaw
Level 2, 333 George Street, Sydney
New South Wales 2000 Australia

Telephone +61 2 9253 0200
Email info@grimshaw-architects.com

Architect

**JPW
JOHNSON PILTON WALKER**

Johnson Pilton Walker Pty Ltd ACN 095 778 886
Level 10 Plaza Building Australia Square 95 Pitt Street Sydney
New South Wales 2000 Australia

Telephone +61 2 9259 5900
Email jpw@jpw.com.au

Project Title

**SYDNEY METRO MARTIN PLACE -
integrated station development**

Client

Macquarie Group Ltd
50 Martin Place, Sydney
New South Wales 2000 Australia

Telephone +61 2 8232 3333
Email: www.macquarie.com

Drawing Title

**LEVEL B3 PLAN - METRO STATION
CONCOURSE**

Status

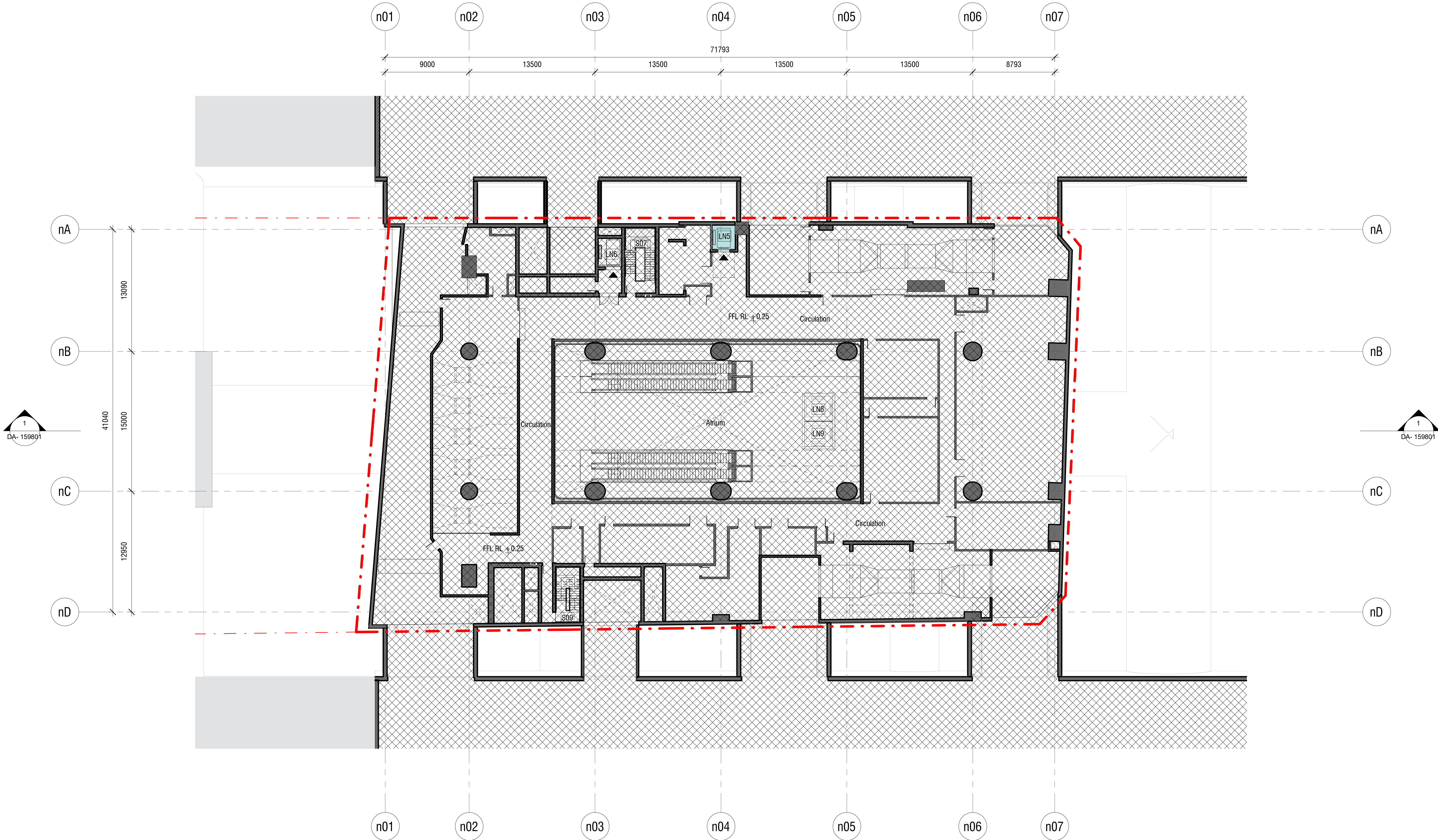
STAGE II SSDA

Drawing Number

CSWSMP- MAC- SMN- AT- DRG- DA- 308300_B

Revision

B



Rev	App	Ckd	Revision or reason for issue	Date
0	AC	MC	STAGE II SSDA - DRAFT ISSUE	29.06.2018
1	AC	MC	STAGE II SSDA - DRAFT ISSUE	30.07.2018
2	AC	MC	STAGE II SSDA - DRAFT ISSUE	03.08.2018
3	AC	MC	STAGE II SSDA - DRAFT ISSUE	09.08.2018
A	AC	MC	STAGE II SSDA - DRAFT ISSUE	10.08.2018
B	AC	MC	STAGE II SSDA	23.08.2018

Legend
CSSI Areas (not for approval)
Site Boundary
SSDA areas below-ground

Scale / North Point

1:200 @ A1, 1:400 @ A3

0 2 4 6 10

General Notes

Do not scale from drawing. Use marked dimensions. To be read in conjunction with all other Consultant's drawings. The Architect to be immediately notified of any discrepancies. Copyright on this drawing retained by the Architect.

Notes

This architectural package describes metro-related areas. Refer to Tzannes for South OSD and JPW for North OSD.

CSSI detail is indicative and subject to separate approval.

Final OSD detail on station levels is subject to issue of the relevant construction certificate and approved Station Design and Precinct Plan

Street trees, furniture, and other public domain elements within the precinct are indicative only and are subject to relevant approvals and detailed coordination with new and existing underground utilities and infrastructure.

Authoring Organisation

GRIMSHAW

Grimshaw
Level 2, 333 George Street, Sydney
New South Wales 2000 Australia

Telephone +61 2 9253 0200
Email info@grimshaw-architects.com

Architect

**JPW
JOHNSON PILTON WALKER**

Johnson Pilton Walker Pty Ltd ACN 095 778 886
Level 10 Plaza Building Australia Square 95 Pitt Street Sydney
New South Wales 2000 Australia

Telephone +61 2 9259 5900
Email jpw@jpw.com.au

Project Title

**SYDNEY METRO MARTIN PLACE -
integrated station development**

Client
Macquarie Group Ltd
50 Martin Place, Sydney
New South Wales 2000 Australia

Telephone +61 2 8232 3333
Email: www.macquarie.com

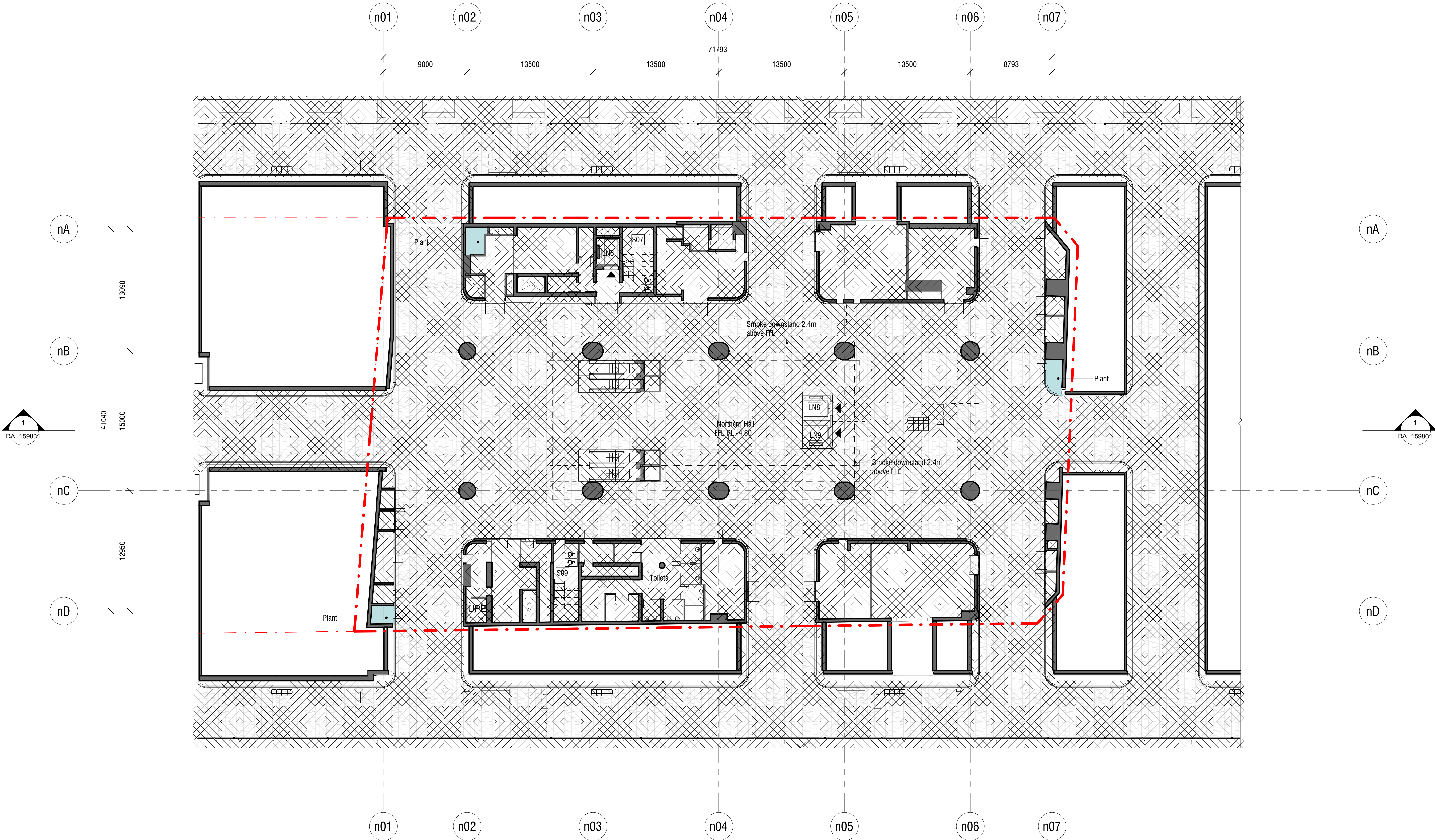
Drawing Title

**LEVEL B4 PLAN - METRO STATION
STATION PLANT**




Status
STAGE II SSDA

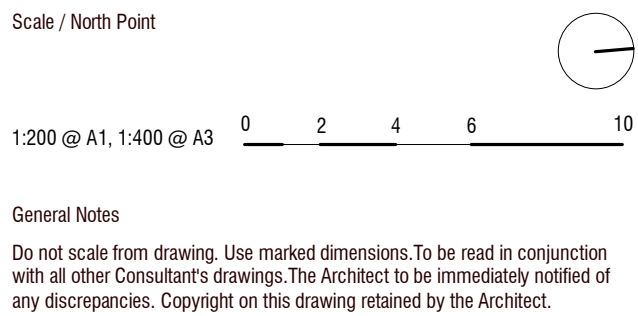
Drawing Number
CSWSMP- MAC- SMN- AT- DRG- DA- 308400 _B

Revision
B



Rev	App	Ckd	Revision or reason for issue	Date
0	AC	MC	STAGE II SSDA - DRAFT ISSUE	29.06.2018
1	AC	MC	STAGE II SSDA - DRAFT ISSUE	30.07.2018
2	AC	MC	STAGE II SSDA - DRAFT ISSUE	03.08.2018
3	AC	MC	STAGE II SSDA - DRAFT ISSUE	09.08.2018
A	AC	MC	STAGE II SSDA - DRAFT ISSUE	10.08.2018
B	AC	MC	STAGE II SSDA	23.08.2018

Legend
 CSSI Areas (not for approval)
 Site Boundary
 SSDA areas below-ground



Notes

This architectural package describes metro-related areas. Refer to Tzannes for South OSD and JPW for North OSD.

CSSI detail is indicative and subject to separate approval.

Final OSD detail on station levels is subject to issue of the relevant construction certificate and approved Station Design and Precinct Plan

Street trees, furniture, and other public domain elements within the precinct are indicative only and are subject to relevant approvals and detailed coordination with new and existing underground utilities and infrastructure.

Authoring Organisation

GRIMSHAW

Grimshaw
Level 2, 333 George Street, Sydney
New South Wales 2000 Australia

Telephone +61 2 9253 0200
Email info@grimshaw-architects.com

Architect

**JPW
JOHNSON PILTON WALKER**

Johnson Pilton Walker Pty Ltd ACN 095 778 886
Level 10 Plaza Building Australia Square 95 Pitt Street Sydney
New South Wales 2000 Australia

Telephone +61 2 9259 5900
Email jpww@jpww.com.au

Project Title

**SYDNEY METRO MARTIN PLACE -
integrated station development**

Client

Macquarie Group Ltd
50 Martin Place, Sydney
New South Wales 2000 Australia

Telephone +61 2 8232 3333
Email: www.macquarie.com

Drawing Title

**LEVEL B5 PLAN - METRO STATION
PLATFORM**

Status

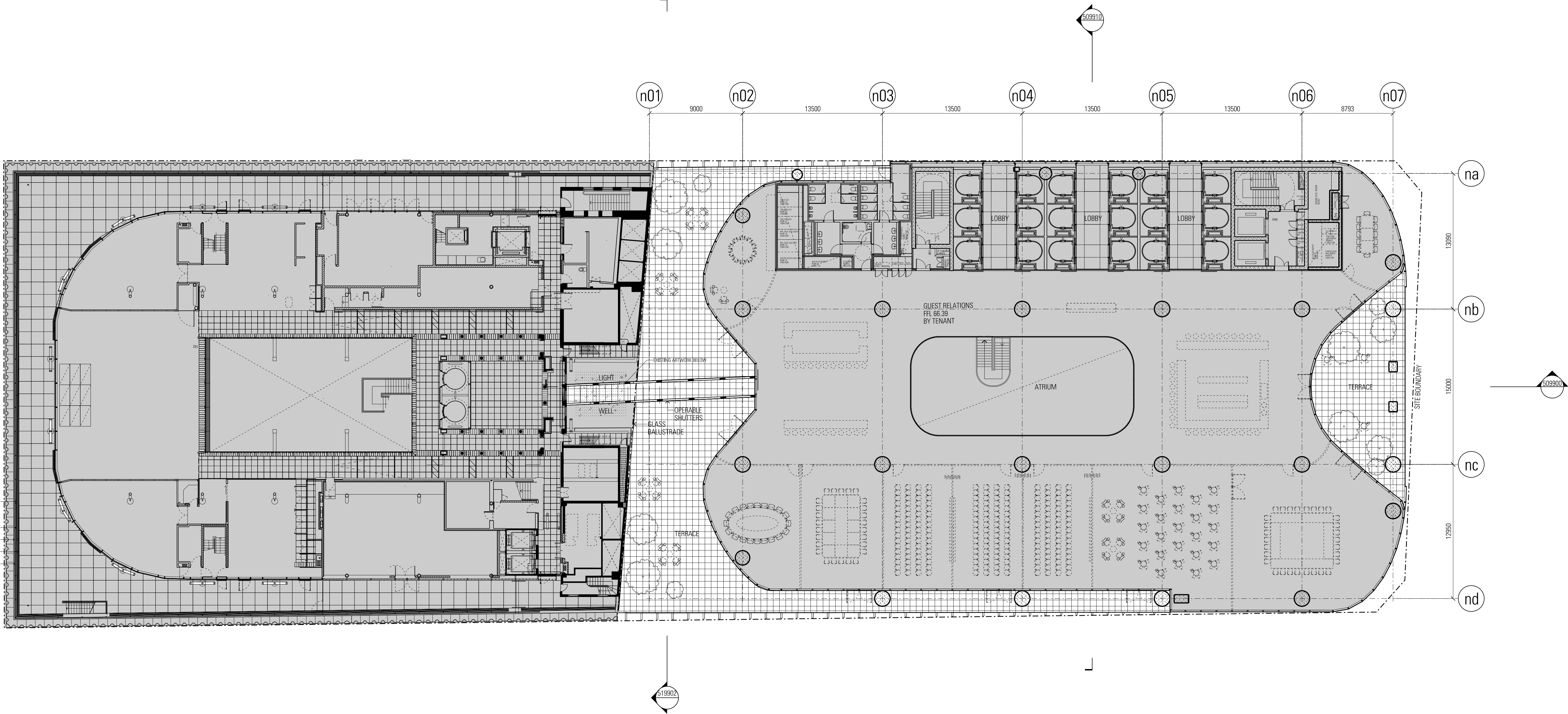
STAGE II SSDA

Drawing Number

CSWSMP- MAC- SMN- AT- DRG- DA- 308500_B

Revision

B



Rev	App	Ckd	Revision or reason for issue	Date	Legend
A	PB	PVR	Stage 2 DA Draft	29-06-18	
B	PB	PVR	Stage 2 DA Draft	06-07-18	
C	PB	PVR	Stage 2 DA Draft	18-07-18	
D	PB	PVR	Stage 2 DA	03-08-18	
E	PB	PVR	Stage 2 DA	07-08-18	
F	PB	PVR	Stage 2 DA	22-08-18	

CSST Areas (not for approval)

CSST detail is indicative and subject to separate approval.

Final OSD detail on station levels is subject to issue of the relevant construction certificate and approved Station Design and Precinct Plan.

Scale / North Point

1:200 @ A1, 1:400 @ A3

General Notes
Do not scale from drawing. Use marked dimensions. To be read in conjunction with all other Consultant's drawings. The Architect to be immediately notified of any discrepancies. Copyright on this drawing retained by the Architect.

Notes

This architectural package describes the North Tower. Refer to Grimshaw for Metro and T2 areas for South Tower

Disclaimer

Street trees, furniture and other public domain elements within the precinct are indicative only and are subject to relevant approvals and detailed coordination with new and existing underground utilities and infrastructure.

Authoring Organisation

GRIMSHAW

Grimshaw
Level 2, 333 George Street, Sydney
New South Wales 2000 Australia

Telephone ++ +61 2 9253 0200
Email info@grimshaw-architects.com

Architect

JPW
JOHNSON PILTON WALKER

Johnson Pilton Walker Pty Ltd ACN 095 778 886
Level 10 Plaza Building Australia Square 95 Pitt Street Sydney
New South Wales 2000 Australia

Telephone ++ +61 2 9259 5900
Email jp@jpww.com.au

Project Title

SYDNEY METRO MARTIN PLACE -
integrated station development



Client
Macquarie Group Ltd
50 Martin Place, Sydney
New South Wales 2000 Australia

Telephone ++ +61 2 8232 3333
Email: www.macquarie.com

Drawing Title

SYDNEY METRO - MARTIN PLACE
LANDSCAPE PLAN
GENERAL ARRANGEMENT

Status
STAGE II SSDA

Drawing Number

CSWSMP-MAC-SMN-AT-DRG-DA-391000

Revision

F

Rev	App	Ckd	Revision or reason for issue
A	PB	PVR	Stage 2 DA Draft
B	PB	PVR	Stage 2 DA Draft
C	PB	PVR	Stage 2 DA Draft
D	PB	PVR	Stage 2 DA
E	PB	PVR	Stage 2 DA
F	PB	PVR	Stage 2 DA
G	PB	PVR	Stage 2 DA

Date	Legend
29-06-18	[MET1] Metal panel cladding (composite aluminium), metallic powder coated finish, colour to match SS1 bronze
06-07-18	[MET6] Shop front mullion over clad with bronze sheet appearance, 300 deep, 150 wide
18-07-18	[MET10-300] Extruded aluminium cladding fins, custom anodised finish, bronze appearance, 300 deep, 150 wide
03-08-18	[MET10-600] Extruded aluminium cladding fins, custom anodised finish, bronze appearance, 600 deep, 150 wide
07-08-18	[MET11] Aluminium cladding, extrusion, custom anodised finish, bronze appearance
08-08-18	[MET12] Aluminium louvers, extrusion, custom anodised finish, bronze appearance
22-08-18	[ST20] Red granite
	[ST21] Red granite - fluted

[SS] CSSI Areas (not for approval)

CSSI detail is indicative and subject to separate approval.

Final OSD detail on station levels is subject to issue of the relevant construction certificate and approved Station Design and Precinct Plan.

Scale / North Point

1:250 @ A1, 1:500 @ A3

0 2.5 5 7.5 12.5

General Notes

Do not scale from drawing. Use marked dimensions. To be read in conjunction with all other Consultant's drawings. The Architect to be immediately notified of any discrepancies. Copyright on this drawing retained by the Architect.

Notes

This architectural package describes the North Tower. Refer to Grimshaw for Metro and Trammes for South Tower

Disclaimer

Street trees, furniture and other public domain elements within the precinct are indicative only and are subject to relevant approvals and detailed coordination with new and existing underground utilities and infrastructure.

Authoring Organisation

GRIMSHAW

Grimshaw
Level 2, 333 George Street, Sydney
New South Wales 2000 Australia

Telephone ++ +61 2 9253 0200
Email info@grimshaw-architects.com

Architect

**JPW
JOHNSON PILTON WALKER**

Johnson Pilton Walker Pty Ltd ACN 095 778 886
Level 10 Plaza Building Australia Square 95 Pitt Street Sydney
New South Wales 2000 Australia

Telephone ++ +61 2 9259 5900
Email jpww@jpww.com.au

Project Title

**SYDNEY METRO - MARTIN PLACE -
integrated station development**



Client
Macquarie Group Ltd
50 Martin Place, Sydney
New South Wales 2000 Australia

Telephone ++ +61 2 8232 3333
Email: www.macquarie.com

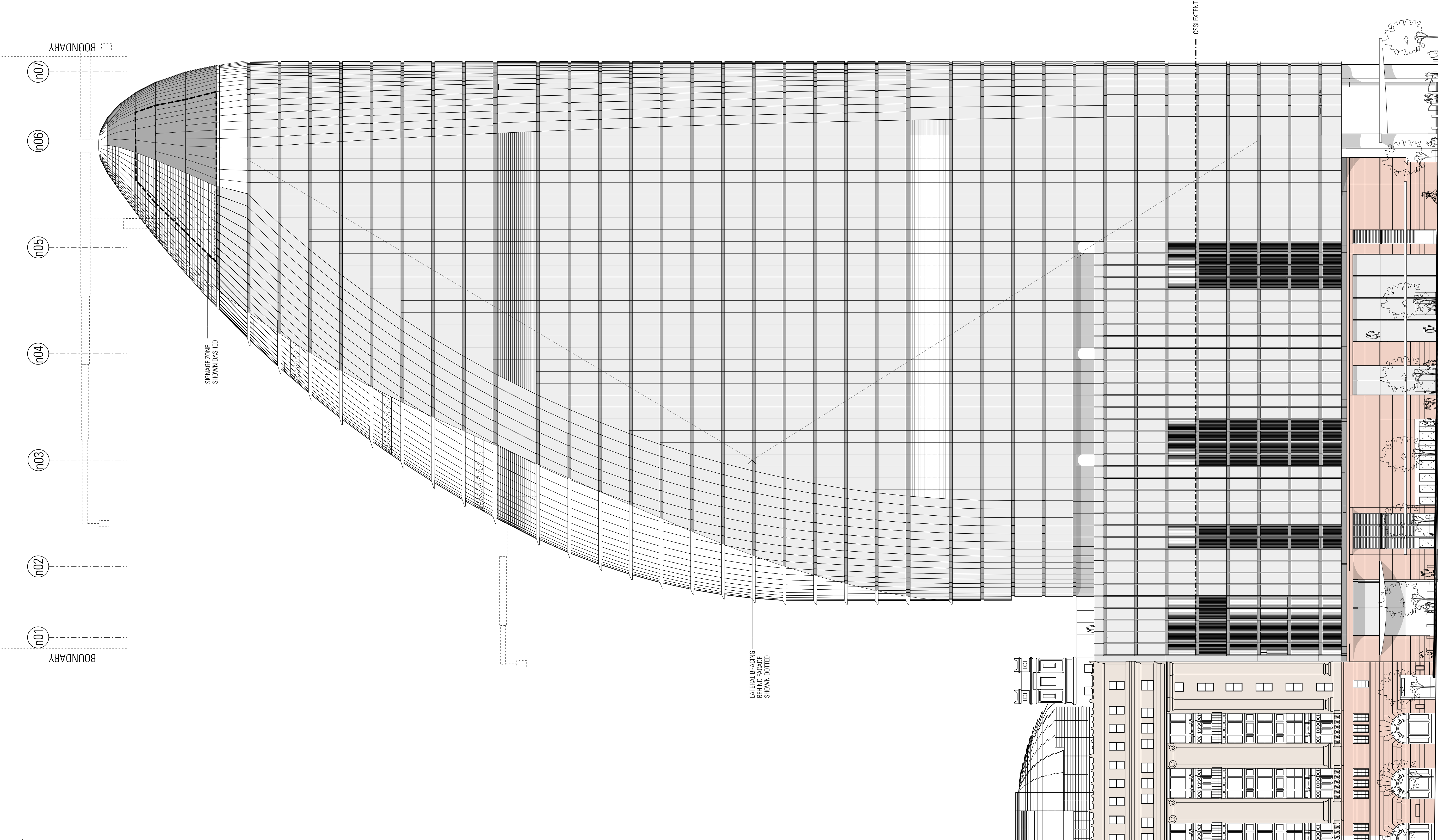
Drawing Title

**SYDNEY METRO - MARTIN PLACE
EAST ELEVATION
GENERAL ARRANGEMENT**

Status
STAGE II SSDA

Drawing Number

CSWSMP-MAC-SMN-AT-DRG-DA-409900



SIGNAGE ZONE
SHOWN DASHED

LATERAL BRACING
BEHIND FACADE
SHOWN DOTTED

CSSI EXTENT

RL 134.00

39

FFL 184.29 SS1 179.14

38

FFL 179.14 SS1 179.14

37

FFL 175.09 SS1 170.84

36

FFL 171.19 SS1 170.84

35

FFL 167.29 SS1 166.94

34

FFL 163.39 SS1 163.04

33

FFL 159.49 SS1 159.14

32

FFL 155.59 SS1 155.24

31

FFL 151.69 SS1 151.34

30

FFL 147.79 SS1 147.44

29

FFL 143.89 SS1 143.54

28

FFL 138.39 SS1 138.04

27

FFL 134.39 SS1 134.04

26

FFL 130.49 SS1 130.14

25

FFL 126.59 SS1 126.24

24

FFL 122.69 SS1 122.34

23

FFL 118.79 SS1 118.44

22

FFL 114.99 SS1 114.64

21

FFL 110.99 SS1 110.64

20

FFL 107.09 SS1 106.74

19

FFL 103.19 SS1 102.84

18

FFL 99.29 SS1 98.94

17

FFL 95.39 SS1 95.04

16

FFL 91.49 SS1 91.14

15

FFL 85.99 SS1 85.64

14

FFL 81.99 SS1 81.64

13

FFL 78.09 SS1 77.74

12

FFL 74.19 SS1 73.84

11

FFL 70.29 SS1 69.94

10

FFL 66.39

9

FFL 62.49 SS1 62.14

8

FFL 58.59 SS1 58.24

7

FFL 54.69 SS1 54.34

6

FFL 50.79 SS1 50.44

5

FFL 46.89 SS1 46.54

4

FFL 42.99 SS1 42.64

3

FFL 39.09 SS1 38.74

2

FFL 35.19 SS1 35.14

1

FFL 31.29 SS1 31.24

G

FFL 25.00

SS1 24.95

LG

FFL 20.00

SS1 19.95

HUNTER STREET

NORTH TOWER

Rev	App	Ckd	Revision or reason for issue
A	PB	PVR	Stage 2 DA Draft
B	PB	PVR	Stage 2 DA Draft
C	PB	PVR	Stage 2 DA Draft
D	PB	PVR	Stage 2 DA
E	PB	PVR	Stage 2 DA
F	PB	PVR	Stage 2 DA
G	PB	PVR	Stage 2 DA

Date	Legend
29-06-18	[MET1] Metal panel cladding (composite aluminium), metallic powder coated finish, colour to match SS MP bronze
06-07-18	[MET6] Shop front mullion over clad with bronze sheet
18-07-18	[MET10-300] Extruded aluminium cladding fins, custom anodised finish, bronze appearance, 300 deep, 150 wide
03-08-18	[MET10-600] Extruded aluminium cladding fins, custom anodised finish, bronze appearance, 600 deep, 150 wide
07-08-18	[MET11] Aluminium cladding, extrusion, custom anodised finish, bronze appearance
08-08-18	[MET12] Aluminium louvers, extrusion, custom anodised finish, bronze appearance
22-08-18	[ST20] Red granite
	[ST21] Red granite - fluted

[CSA] CSA Areas (not for approval)
CSA detail is indicative and subject to separate approval.

Final OSD detail on station levels is subject to issue of the relevant construction certificate and approved Station Design and Precinct Plan.

Scale / North Point

1:250 @ A1, 1:500 @ A3

General Notes
Do not scale from drawing. Use marked dimensions. To be read in conjunction with all other Consultant's drawings. The Architect to be immediately notified of any discrepancies. Copyright on this drawing retained by the Architect.

Notes

This architectural package describes the North Tower. Refer to Grimshaw for Metro and Trains for South Tower

Disclaimer

Street trees, furniture and other public domain elements within the precinct are indicative only and are subject to relevant approvals and detailed coordination with new and existing underground utilities and infrastructure.

Authoring Organisation

GRIMSHAW

Grimshaw
Level 2, 333 George Street, Sydney
New South Wales 2000 Australia

Telephone ++ 61 2 9253 0200
Email info@grimshaw-architects.com

Architect

JPW JOHNSON PILTON WALKER

Johnson Pilton Walker Pty Ltd ACN 095 778 886
Level 10 Plaza Building Australia Square 95 Pitt Street Sydney
New South Wales 2000 Australia

Telephone + 61 2 9259 5900
Email jpw@jpw.com.au

Project Title

SYDNEY METRO MARTIN PLACE - Integrated station development



Client
Macquarie Group Ltd
50 Martin Place, Sydney
New South Wales 2000 Australia

Telephone + 61 2 8232 3333
Email: www.macquarie.com

Drawing Title

SYDNEY METRO - MARTIN PLACE NORTH ELEVATION GENERAL ARRANGEMENT

Status
STAGE II SSDA

Drawing Number
CSWSMP-MAC-SMN-AT-DRG-DA-409901

Revision
G

BOUNDARY
na

nb

nc

nd

BOUNDARY

na

nb

nc

nd

BOUNDARY

na

nb

nc

nd

BOUNDARY

na

nb

nc

nd

BOUNDARY

na

nb

nc

nd

BOUNDARY

na

nb

nc

nd

BOUNDARY

na

nb

nc

nd

BOUNDARY

na

nb

nc

nd

BOUNDARY

na

nb

nc

nd

BOUNDARY

na

nb

nc

nd

BOUNDARY

na

nb

nc

nd

BOUNDARY

na

nb

nc

nd

BOUNDARY

na

nb

nc

nd

BOUNDARY

na

nb

nc

nd

BOUNDARY

na

nb

nc

nd

BOUNDARY

na

nb

nc

nd

BOUNDARY

na

nb

nc

nd

BOUNDARY

na

nb

nc

nd

BOUNDARY

na

nb

nc

nd

BOUNDARY

na

nb

nc

nd

BOUNDARY

na

nb

nc

nd

BOUNDARY

na

nb

nc

nd

BOUNDARY

na

nb

nc

nd

BOUNDARY

na

nb

nc

nd

BOUNDARY

na

nb

nc

nd

BOUNDARY

na

nb

nc

nd

BOUNDARY

na

nb

nc

nd

BOUNDARY

na

nb

nc

nd

BOUNDARY

na

nb

nc

nd

BOUNDARY

na

nb

nc

nd

BOUNDARY

na

nb

nc

nd

BOUNDARY

na

nb

nc

nd

BOUNDARY

na

nb

nc

nd

BOUNDARY

na

nb

nc

nd

BOUNDARY

na

nb

nc

nd

BOUNDARY

na

nb

nc

nd

BOUNDARY

na

nb

nc

nd

BOUNDARY

na

nb

nc

nd

BOUNDARY

na

nb

nc

nd

BOUNDARY

na

nb

nc

nd

BOUNDARY

na

nb

nc

nd

BOUNDARY

na

nb

nc

nd

BOUNDARY

na

nb

nc

nd

BOUNDARY

na

nb

nc

nd

BOUNDARY

na

nb

nc

nd

BOUNDARY

na

nb

nc

nd

BOUNDARY

na

nb

nc

nd

BOUNDARY

na

nb

nc

nd

BOUNDARY

na

nb

nc

nd

BOUNDARY

na

nb

nc

nd

BOUNDARY

na

nb

nc

nd

BOUNDARY

na

nb

nc

nd

BOUNDARY

na

nb

nc

nd

BOUNDARY

na

nb

nc

nd

BOUNDARY

na

nb

nc

nd

BOUNDARY

na

nb

nc

nd

BOUNDARY

na

nb

nc

nd

BOUNDARY

na

nb

nc

nd

BOUNDARY

na

nb

nc

nd

BOUNDARY

na

nb

nc

nd

BOUNDARY

na

nb

nc

nd

BOUNDARY

na

nb

nc

nd

BOUNDARY

na

nb

nc

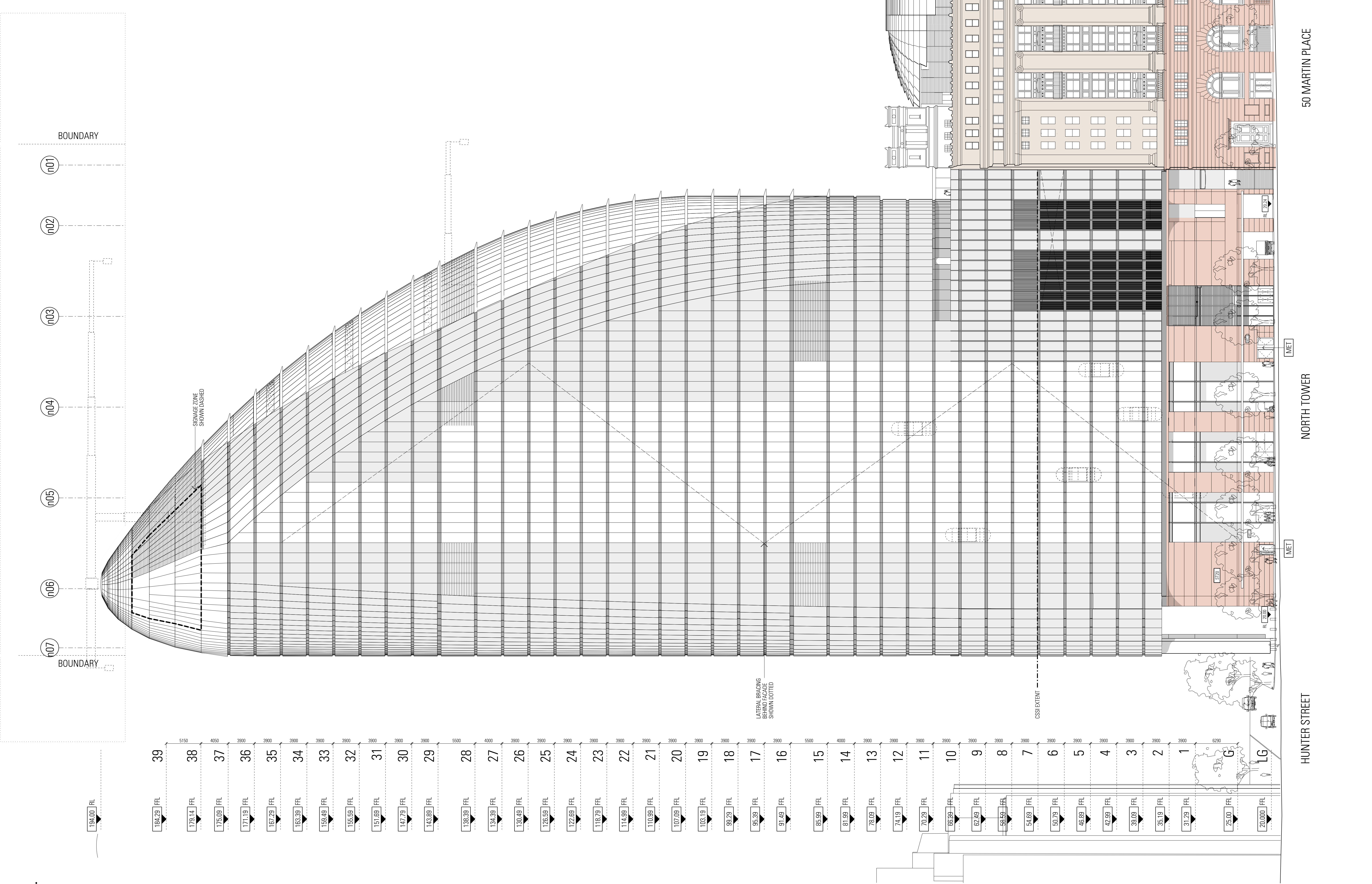
nd

BOUNDARY

na

nb

nc



Rev	App	Ckd	Revision or reason for issue	Date	Legend	Scale / North Point	Notes	Authoring Organisation	Architect	Project Title	Drawing Title
A	PB	PVR	Stage 2 DA Draft	29-06-18	[MET1] Metal panel cladding (composite aluminium), metallic powder coated finish, colour to match 50 MP bronze	1:250 @ A1, 1:500 @ A3	This architectural package describes the North Tower. Refer to Grimshaw for Metro and Trammes for South Tower	GRIMSHAW	JPW JOHNSON PILTON WALKER	SYDNEY METRO MARTIN PLACE - integrated station development	SYDNEY METRO - MARTIN PLACE WEST ELEVATION GENERAL ARRANGEMENT
B	PB	PVR	Stage 2 DA Draft	06-07-18	[MET6] Shop front mullion cover clad with bronze sheet	0 2.5 5 7.5 12.5	Street trees, furniture and other public domain elements within the precinct are indicative only and are subject to relevant approvals and detailed coordination with new and existing underground utilities and infrastructure.	Grimshaw Level 2, 333 George Street, Sydney New South Wales 2000 Australia	Johnson Pilton Walker Pty Ltd ACN 095 778 886 Level 10 Plaza Building Australia Square 95 Pitt Street Sydney New South Wales 2000 Australia	Client Macquarie Group Ltd 50 Martin Place, Sydney New South Wales 2000 Australia	Revision F
C	PB	PVR	Stage 2 DA Draft	18-07-18	[MET10-300] Extruded aluminium cladding fins, custom anodised finish, bronze appearance, 300 deep, 150 wide			Telephone + +61 2 9253 0200 Email info@grimshaw-architects.com	Telephone +61 2 9259 5900 Email jpjw@jpjw.com.au	Client Macquarie Group Ltd 50 Martin Place, Sydney New South Wales 2000 Australia	Revision F
D	PB	PVR	Stage 2 DA	03-08-18	[MET10-600] Extruded aluminium cladding fins, custom anodised finish, bronze appearance, 600 deep, 150 wide					Client Macquarie Group Ltd 50 Martin Place, Sydney New South Wales 2000 Australia	Revision F
E	PB	PVR	Stage 2 DA	07-08-18	[MET11] Aluminium cladding, extrusion, custom anodised finish, bronze appearance					Client Macquarie Group Ltd 50 Martin Place, Sydney New South Wales 2000 Australia	Revision F
F	PB	PVR	Stage 2 DA	22-08-18	[MET12] Aluminium louvers, extrusion, custom anodised finish, bronze appearance					Client Macquarie Group Ltd 50 Martin Place, Sydney New South Wales 2000 Australia	Revision F
					[ST20] Red granite					Client Macquarie Group Ltd 50 Martin Place, Sydney New South Wales 2000 Australia	Revision F
					[ST21] Red granite - fluted					Client Macquarie Group Ltd 50 Martin Place, Sydney New South Wales 2000 Australia	Revision F

Rev	App	Ckd	Revision or reason for issue
A	PB	PVR	Stage 2 DA Draft
B	PB	PVR	Stage 2 DA Draft
C	PB	PVR	Stage 2 DA Draft
D	PB	PVR	Stage 2 DA
E	PB	PVR	Stage 2 DA
F	PB	PVR	Stage 2 DA

Date
29-06-18
06-07-18
18-07-18
03-08-18
07-08-18
22-08-18

Legend
[MET1] Metal panel cladding (composite aluminium), metallic powder coated finish, colour to match 50 MP bronze
[MET6] Shop front mullion over clad with bronze sheet
[MET10-300] Extruded aluminium cladding fins, custom anodised finish, bronze appearance, 300 deep, 150 wide
[MET10-600] Extruded aluminium cladding fins, custom anodised finish, bronze appearance, 600 deep, 150 wide
[MET11] Aluminium cladding, extrusion, custom anodised finish, bronze appearance
[MET12] Aluminium louvers, extrusion, custom anodised finish, bronze appearance
[ST20] Red granite
[ST21] Red granite - fluted

CSST Areas (not for approval)

CSST detail is indicative and subject to separate approval.

Final OSD detail on station levels is subject to issue of the relevant construction certificate and approved Station Design and Precinct Plan.

Scale / North Point

1:250 @ A1, 1:500 @ A3

General Notes
Do not scale from drawing. Use marked dimensions. To be read in conjunction with all other Consultant's drawings. The Architect to be immediately notified of any discrepancies. Copyright on this drawing retained by the Architect.

Notes

This architectural package describes the North Tower. Refer to Grimshaw for Metro and Trains for South Tower

Disclaimer

Street trees, furniture and other public domain elements within the precinct are indicative only and are subject to relevant approvals and detailed coordination with new and existing underground utilities and infrastructure.

Authoring Organisation

GRIMSHAW

Grimshaw
Level 2, 333 George Street, Sydney
New South Wales 2000 Australia

Telephone ++ +61 2 9259 0200
Email info@grimshaw-architects.com

Architect

**JPW
JOHNSON PILTON WALKER**

Johnson Pilton Walker Pty Ltd ACN 095 778 886
Level 10 Plaza Building Australia Square 95 Pitt Street Sydney
New South Wales 2000 Australia

Telephone +61 2 9259 5900
Email jpw@jpw.com.au

Project Title

**SYDNEY METRO MARTIN PLACE -
Integrated station development**



Client
Macquarie Group Ltd
50 Martin Place, Sydney
New South Wales 2000 Australia

Telephone +61 2 8232 3333
Email: www.macquarie.com

Drawing Title

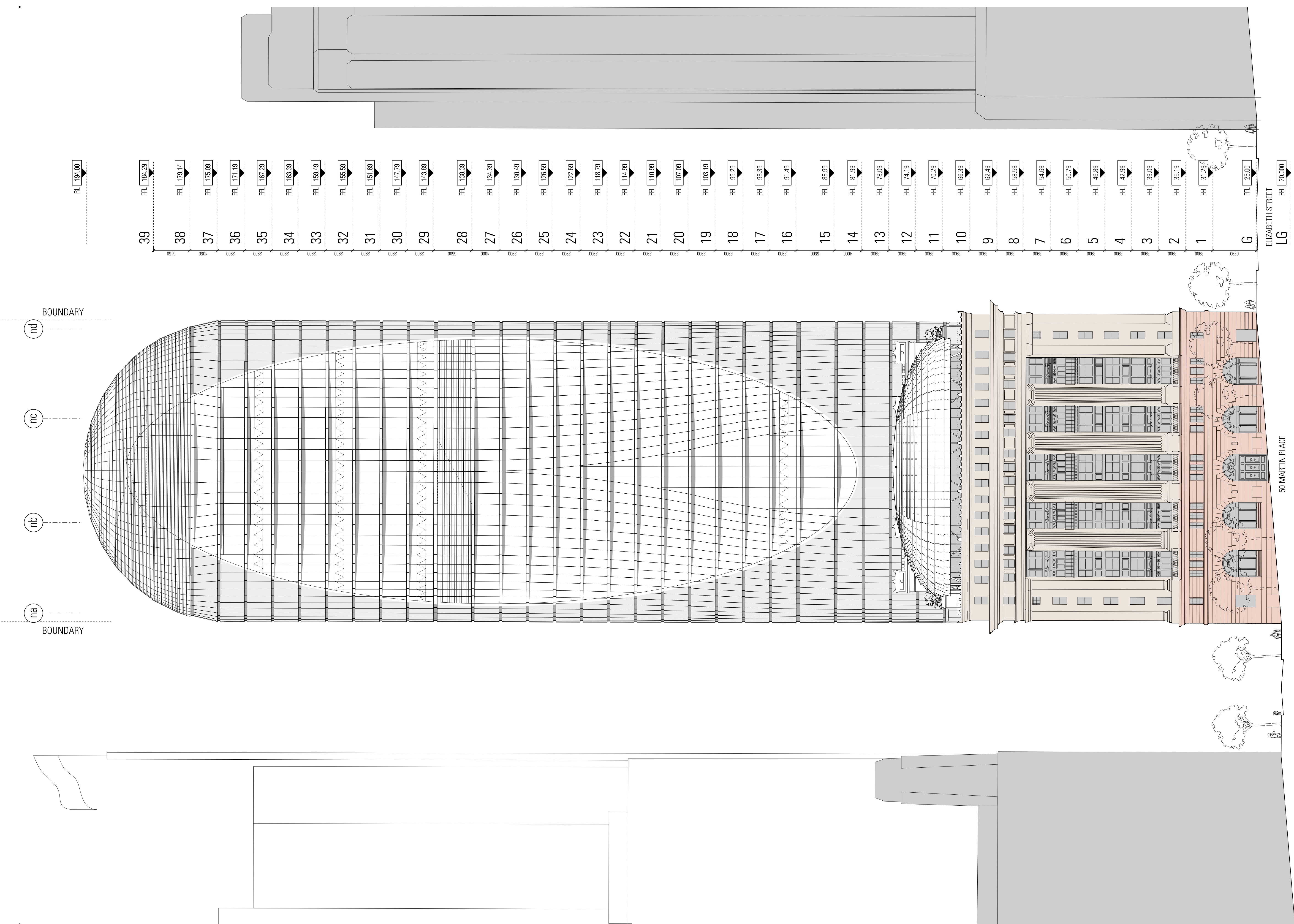
**SYDNEY METRO - MARTIN PLACE
SOUTH ELEVATION
GENERAL ARRANGEMENT**

Status Revision

STAGE II SSDA F

Drawing Number

CWSMP-MAC-SMN-AT-DRG-DA-409903



Rev	App	Ckd	Revision or reason for issue
A	PB	PVR	Stage 2 DA Draft
B	PB	PVR	Stage 2 DA Draft
C	PB	PVR	Stage 2 DA Draft
D	PB	PVR	Stage 2 DA
E	PB	PVR	Stage 2 DA
F	PB	PVR	Stage 2 DA
G	PB	PVR	Stage 2 DA
H	PB	PVR	Stage 2 DA

Date	Legend
29-06-18	MET1 Metal panel cladding (composite aluminium), metallic powder coated finish, colour to match 50 MP bronze
06-07-18	MET6 Shop front mullion over clad with bronze sheet
18-07-18	MET10-300 Extruded aluminium cladding fins, custom anodised finish, bronze appearance, 300 deep, 150 webs
03-08-18	MET10-600 Extruded aluminium cladding fins, custom anodised finish, bronze appearance, 600 deep, 150 webs
07-08-18	MET11 Aluminium cladding, extrusion, custom anodised finish, bronze appearance
08-08-18	MET12 Aluminium louvers, extrusion, custom anodised finish, bronze appearance
13-08-18	ST20 Red granite
22-08-18	ST21 Red granite - fluted

CSA Areas (not for approval)

CSA detail is indicative and subject to separate approval.

Final OSD detail on station levels is subject to issue of the relevant construction certificate and approved Station Design and Precinct Plan.

Scale / North Point

1:250 @ A1, 1:500 @ A3

General Notes

Do not scale from drawing. Use marked dimensions. To be read in conjunction with all other Consultants' drawings. The Architect to be immediately notified of any discrepancies. Copyright on this drawing retained by the Architect.

Notes

This architectural package describes the North Tower. Refer to Grimshaw for Metro and Trammes for South Tower

Disclaimer

Street trees, furniture and other public domain elements within the precinct are indicative only and are subject to relevant approvals and detailed coordination with new and existing underground utilities and infrastructure.

Authoring Organisation

GRIMSHAW

Grimshaw
Level 2, 333 George Street, Sydney
New South Wales 2000 Australia

Telephone + +61 2 9253 0200
Email info@grimshaw-architects.com

Architect

**JPW
JOHNSON PILTON WALKER**

Johnson Pilton Walker Pty Ltd ACN 095 778 896
Level 10 Plaza Building Australia Square 95 Pitt Street Sydney
New South Wales 2000 Australia

Telephone +61 2 9259 5900
Email jpw@jpw.com.au

Project Title

**SYDNEY METRO MARTIN PLACE -
integrated station development**



Client
Macquarie Group Ltd
50 Martin Place, Sydney
New South Wales 2000 Australia

Telephone +61 2 8232 3333
Email: www.macquarie.com

Drawing Title

**SYDNEY METRO - MARTIN PLACE
NORTH - SOUTH SECTION
GENERAL ARRANGEMENT**

Status

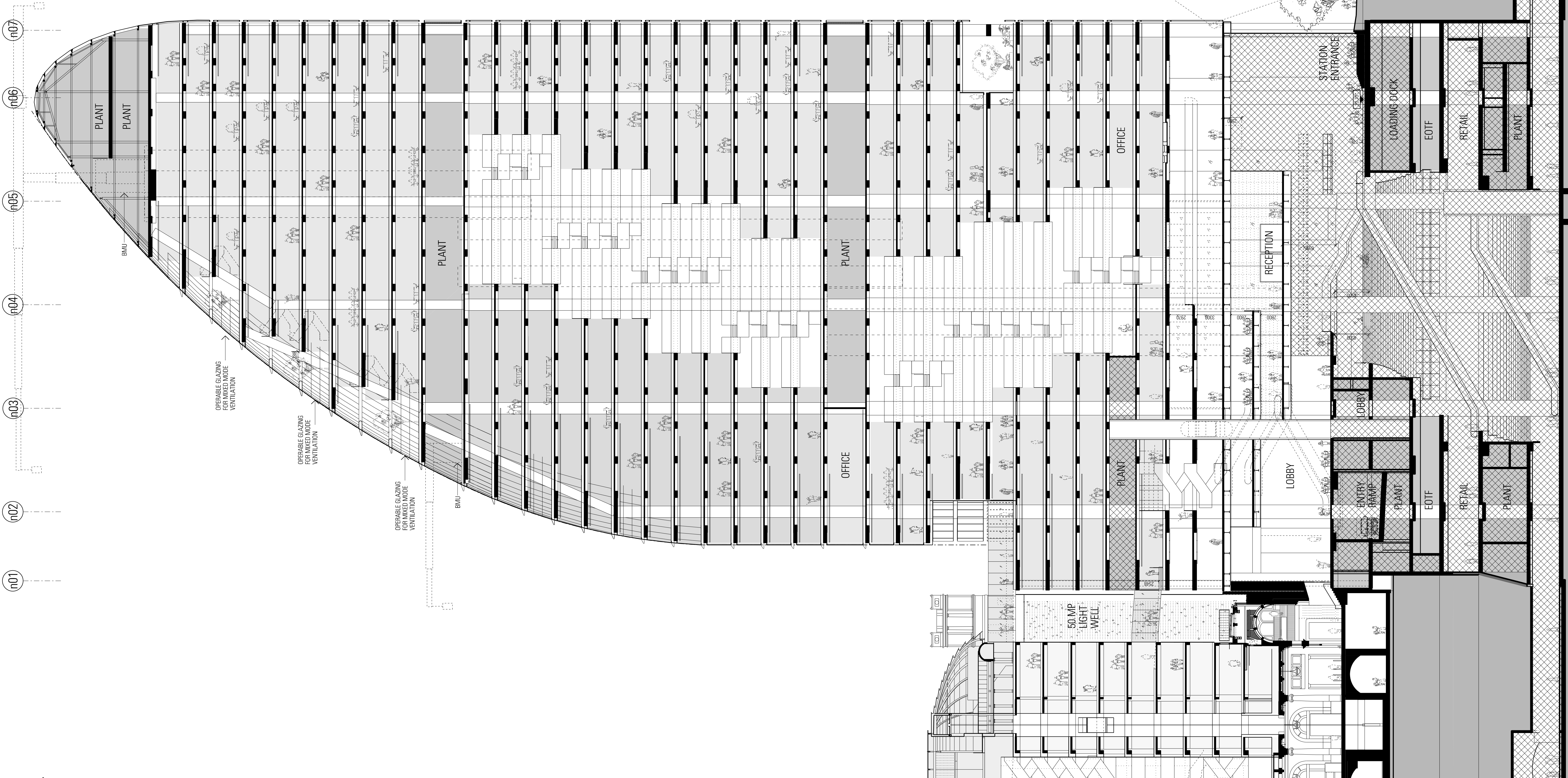
STAGE II SSDA

Drawing Number

CSWSMP-MAC-SMN-AT-DRG-DA-509900

Revision

H



Rev	App	Ckd	Revision or reason for issue
A	PB	PVR	Stage 2 DA Draft
B	PB	PVR	Stage 2 DA Draft
C	PB	PVR	Stage 2 DA Draft
D	PB	PVR	Stage 2 DA
E	PB	PVR	Stage 2 DA
F	PB	PVR	Stage 2 DA
G	PB	PVR	Stage 2 DA

Date	Legend
29-06-18	MET1 Metal panel cladding (composite aluminium), metallic powder coated finish, colour to match 50 MP bronze
06-07-18	MET6 Shop front mullion over clad with bronze sheet
18-07-18	MET10-300 Extruded aluminium cladding fins, custom anodised finish, bronze appearance, 300 deep, 150 wide
03-08-18	MET10-600 Extruded aluminium cladding fins, custom anodised finish, bronze appearance, 600 deep, 150 wide
07-08-18	MET11 Aluminium cladding, extrusion, custom anodised finish, bronze appearance
08-08-18	MET12 Aluminium louvers, extrusion, custom anodised finish, bronze appearance
22-08-18	ST20 Red granite
	ST21 Red granite - fluted

Final OSD detail on station levels is subject to issue of the relevant construction certificate and approved Station Design and Precinct Plan.

CSOI Areas (not for approval)

CSOI detail is indicative and subject to separate approval.

Scale / North Point

General Notes

Do not scale from drawing. Use marked dimensions. To be read in conjunction with all other Consultant's drawings. The Architect to be immediately notified of any discrepancies. Copyright on this drawing retained by the Architect.



Notes

This architectural package describes the North Tower. Refer to Grimshaw for Metro and Tzannes for South Tower

Disclaimer

Street trees, furniture and other public domain elements within the precinct are indicative only and are subject to relevant approvals and detailed coordination with new and existing underground utilities and infrastructure.

Authoring Organisation

GRIMSHAW

Grimshaw
Level 2, 333 George Street, Sydney
New South Wales 2000 Australia

Telephone ++ +61 2 9253 0200
Email info@grimshaw-architects.com

Architect

**JPW
JOHNSON PILTON WALKER**

Johnson Pilton Walker Pty Ltd ACN 095 778 886
Level 10 Plaza Building Australia Square 95 Pitt Street Sydney
New South Wales 2000 Australia

Telephone +61 2 9259 5900
Email jpw@jpw.com.au

Project Title

**SYDNEY METRO MARTIN PLACE -
Integrated station development**



Client
Macquarie Group Ltd
50 Martin Place, Sydney
New South Wales 2000 Australia

Telephone +61 2 8232 3333
Email: www.macquarie.com

Drawing Title

**SYDNEY METRO - MARTIN PLACE
EAST - WEST SECTION
GENERAL ARRANGEMENT**

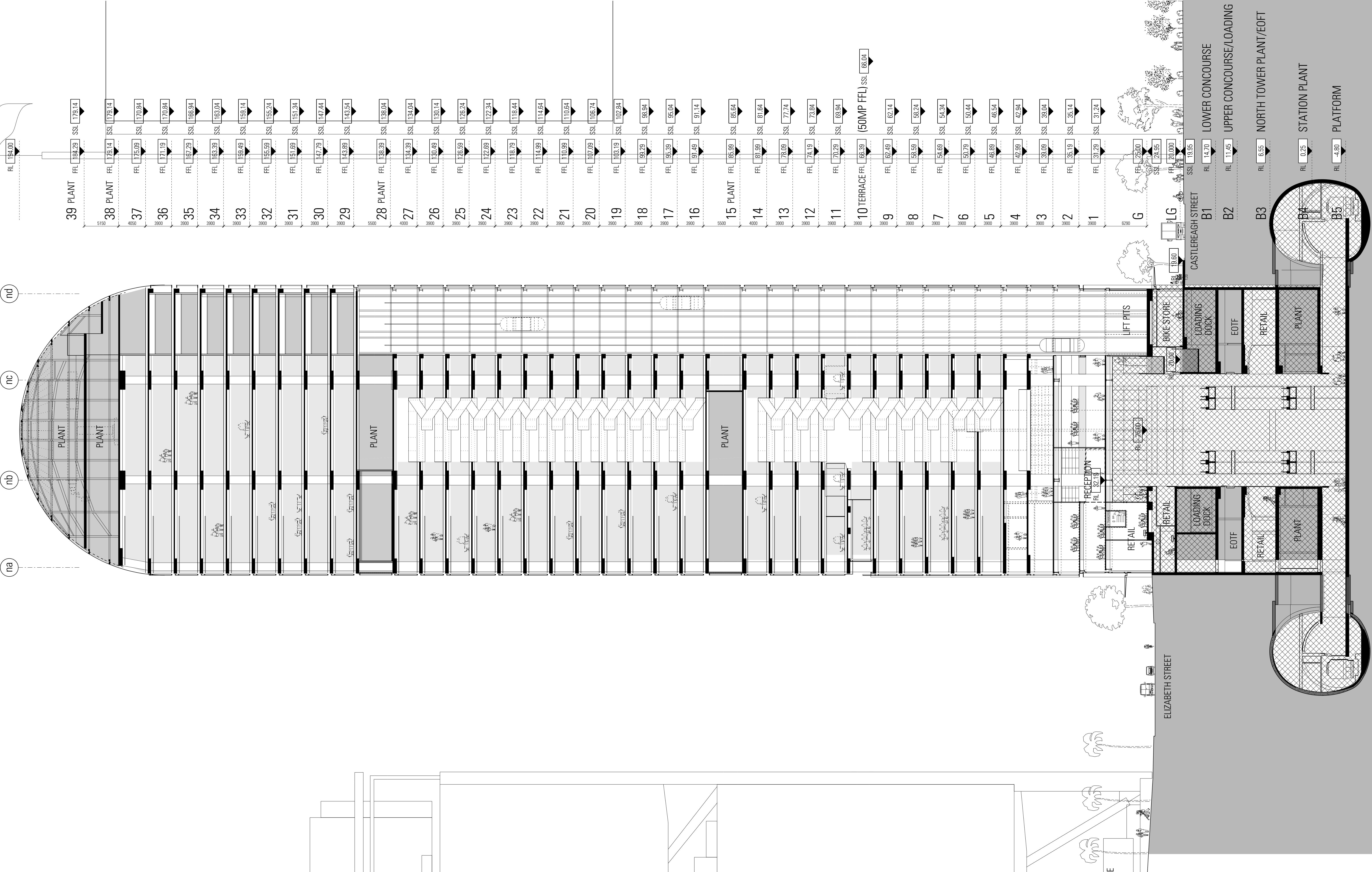
Status
STAGE II SSDA

Drawing Number

CSWSMP-MAC-SMN-AT-DRG-DA-509910

Revision

G



CSWSMP-MAC-SMN-AT-DRG-DA-519902.dwg
24/07/2018
2:00 PM

Rev	App	Ckd	Revision or reason for issue
A	PB	PVR	Stage 2 DA Draft
B	PB	PVR	Stage 2 DA Draft
C	PB	PVR	Stage 2 DA Draft
D	PB	PVR	Stage 2 DA
E	PB	PVR	Stage 2 DA
F	PB	PVR	Stage 2 DA

Date
29-06-18
06-07-18
18-07-18
03-08-18
07-08-18
22-08-18

Legend
[MET1] Metal panel cladding (composite aluminium), metallic powder coated finish, colour to match 50 MP bronze
[MET6] Shop front mullion over clad with bronze sheet appearance, 300 deep, 150 wide
[MET10-300] Extruded aluminium cladding fins, custom anodised finish, bronze appearance, 300 deep, 150 wide
[MET10-600] Extruded aluminium cladding fins, custom anodised finish, bronze appearance, 600 deep, 150 wide
[MET11] Aluminium cladding, extrusion, custom anodised finish, bronze appearance
[MET12] Aluminium louvers, extrusion, custom anodised finish, bronze appearance
[ST20] Red granite
[ST21] Red granite - fluted

CSA Areas (not for approval)

CSA detail is indicative and subject to separate approval.

Final OSD detail on station levels is subject to issue of the relevant construction certificate and approved Station Design and Precinct Plan.

Scale / North Point

1:200 @ A1, 1:400 @ A3

General Notes

Do not scale from drawing. Use marked dimensions. To be read in conjunction with all other Consultant's drawings. The Architect to be immediately notified of any discrepancies. Copyright on this drawing retained by the Architect.

Notes

This architectural package describes the North Tower. Refer to Grimshaw for Metro and Trains for South Tower

Disclaimer

Street trees, furniture and other public domain elements within the precinct are indicative only and are subject to relevant approvals and detailed coordination with new and existing underground utilities and infrastructure.

Authoring Organisation

GRIMSHAW

Grimshaw
Level 2, 333 George Street, Sydney
New South Wales 2000 Australia

Telephone ++ +61 2 9253 0200
Email info@grimshaw-architects.com

Architect

**JPW
JOHNSON PILTON WALKER**

Johnson Pilton Walker Pty Ltd ACN 095 778 886
Level 10 Plaza Building Australia Square 95 Pitt Street Sydney
New South Wales 2000 Australia

Telephone +61 2 9259 5900
Email jpw@jpw.com.au

Project Title

**SYDNEY METRO - MARTIN PLACE -
integrated station development**



Client
Macquarie Group Ltd
50 Martin Place, Sydney
New South Wales 2000 Australia

Telephone +61 2 8232 3333
Email: www.macquarie.com

Drawing Title

**SYDNEY METRO - MARTIN PLACE
EAST-WEST INTERNAL SECTION
GENERAL ARRANGEMENT**

Status Revision

STAGE II SSDA **F**

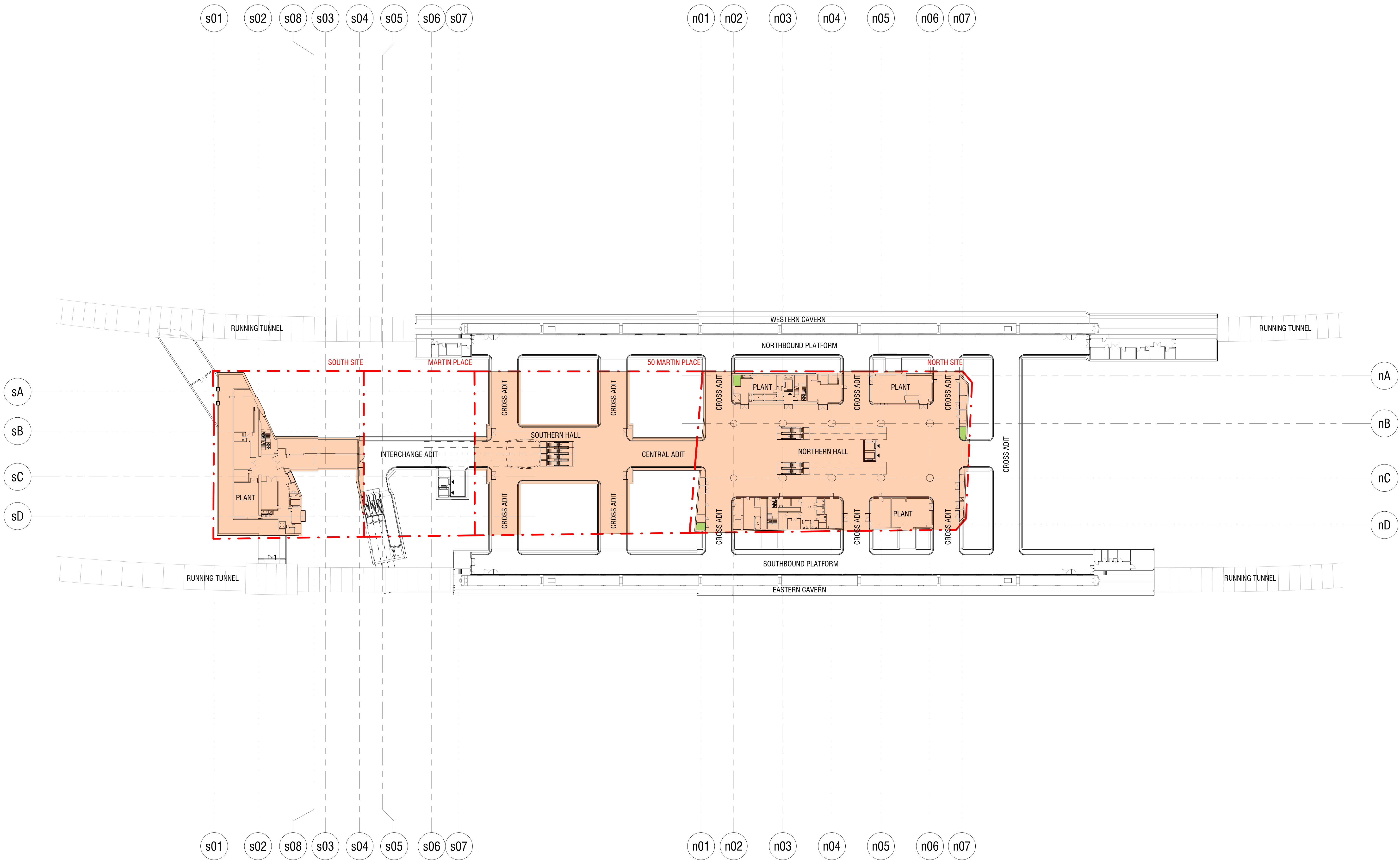
Drawing Number

CSWSMP-MAC-SMN-AT-DRG-DA-519902

APPENDIX 2

Drawing List — Demarcation Plans

Sheet Number	Sheet Name	Size	Scale	Revision
CSWSMP-MAC-SMA-AT-DRG-DA-000000	DEMARICATION PLAN - COVER SHEET	A1	NTS	C
CSWSMP-MAC-SMA-AT-DRG-DA-398500	DEMARICATION PLAN - B5 PLATFORM	A1	1:500	B
CSWSMP-MAC-SMA-AT-DRG-DA-398400	DEMARICATION PLAN - B4 STATION PLANT	A1	1:500	B
CSWSMP-MAC-SMA-AT-DRG-DA-397010	DEMARICATION PLAN - B4 MEZZANINE STATION PLANT	A1	1:500	B
CSWSMP-MAC-SMA-AT-DRG-DA-398300	DEMARICATION PLAN - B3 PLANT / CONCOURSE	A1	1:500	B
CSWSMP-MAC-SMA-AT-DRG-DA-398200	DEMARICATION PLAN - B2 LOWER CONCOURSE / EOTF	A1	1:500	B
CSWSMP-MAC-SMA-AT-DRG-DA-398100	DEMARICATION PLAN - B1 UPPER CONCOURSE / SERVICE YARD	A1	1:500	B
CSWSMP-MAC-SMA-AT-DRG-DA-398000	DEMARICATION PLAN - LOWER GROUND (CASTLEREAGH STREET)	A1	1:500	B
CSWSMP-MAC-SMA-AT-DRG-DA-390000	DEMARICATION PLAN - GROUND FLOOR (ELIZABETH STREET)	A1	1:500	B
CSWSMP-MAC-SMA-AT-DRG-DA-396010	DEMARICATION PLAN - MEZZANINE	A1	1:500	B
CSWSMP-MAC-SMA-AT-DRG-DA-390100	DEMARICATION PLAN - LEVEL 01	A1	1:500	B
CSWSMP-MAC-SMA-AT-DRG-DA-390200	DEMARICATION PLAN - LEVEL 02	A1	1:500	B
CSWSMP-MAC-SMA-AT-DRG-DA-390300	DEMARICATION PLAN - LEVEL 03	A1	1:500	C
CSWSMP-MAC-SMA-AT-DRG-DA-390400	DEMARICATION PLAN - LEVEL 04	A1	1:500	B
CSWSMP-MAC-SMA-AT-DRG-DA-390500	DEMARICATION PLAN - LEVEL 05	A1	1:500	B
CSWSMP-MAC-SMA-AT-DRG-DA-390600	DEMARICATION PLAN - LEVEL 06	A1	1:500	C
CSWSMP-MAC-SMA-AT-DRG-DA-390700	DEMARICATION PLAN - LEVEL 07	A1	1:500	C
CSWSMP-MAC-SMA-AT-DRG-DA-159891	DEMARICATION SECTION - N-S SECTION	A1	1:500	D



Rev	App	Ckd	Revision or reason for issue	Date	Notes
0	AC	MC	STAGE 1 SSDA	May 2017	This architectural package describes metro-related areas. Refer to Tzannes for South OSD and JPW for North OSD.
1	AC	MC	STAGE II SSDA - DRAFT ISSUE	29.06.2018	
2	AC	MC	STAGE II SSDA - DRAFT ISSUE	01.08.2018	CSI detail is indicative and subject to separate approval.
3	AC	MC	STAGE II SSDA - DRAFT ISSUE (PRELIM)	09.08.2018	
4	AC	MC	STAGE II SSDA - DRAFT ISSUE	09.08.2018	Final OSD detail on station levels is subject to issue of the relevant construction certificate and approved Station Design and Precinct Plan.
A	AC	MC	STAGE II SSDA - DRAFT ISSUE	10.08.2018	
B	AC	MC	STAGE II SSDA	23.08.2018	Street trees, furniture, and other public domain elements within the precinct are indicative only and are subject to relevant approvals and detailed coordination with new and existing underground utilities and infrastructure.

Legend
--- SSD approval site boundary
 SSD Areas
 CSI Areas
 Structure included as part of CSI application, finishes and fitout included in SSD application

Scale / North Point

1:500 @ A1, 1:1000 @ A3

0 5 10 15 25

General Notes

Do not scale from drawing. Use marked dimensions. To be read in conjunction with all other Consultant's drawings. The Architect to be immediately notified of any discrepancies. Copyright on this drawing retained by the Architect.

Authoring Organisation

GRIMSHAW

Grimshaw
Level 2, 333 George Street, Sydney
New South Wales 2000 Australia

Telephone +61 2 9253 0200
Email info@grimshaw-architects.com

Architect

Tzannes

Tzannes
63 Myrtle Street, Chippendale
New South Wales 2008 Australia

Telephone +61 2 9319 3744
Email tzannes@tzannes.com.au

Architect

**JPW/
JOHNSON PILTON WALKER**

Johnson Pilton Walker Pty Ltd ACN 095 778 886
Level 10 Plaza Building Australia Square 95 Pitt Street Sydney
New South Wales 2000 Australia

Telephone +61 2 9259 5900
Email jpww@jpww.com.au

Project Title

**SYDNEY METRO MARTIN PLACE -
integrated station development**


MACQUARIE BANK

Client
Macquarie Group Ltd
50 Martin Place, Sydney
New South Wales 2000 Australia

Telephone +61 2 8232 3333
Email www.macquarie.com

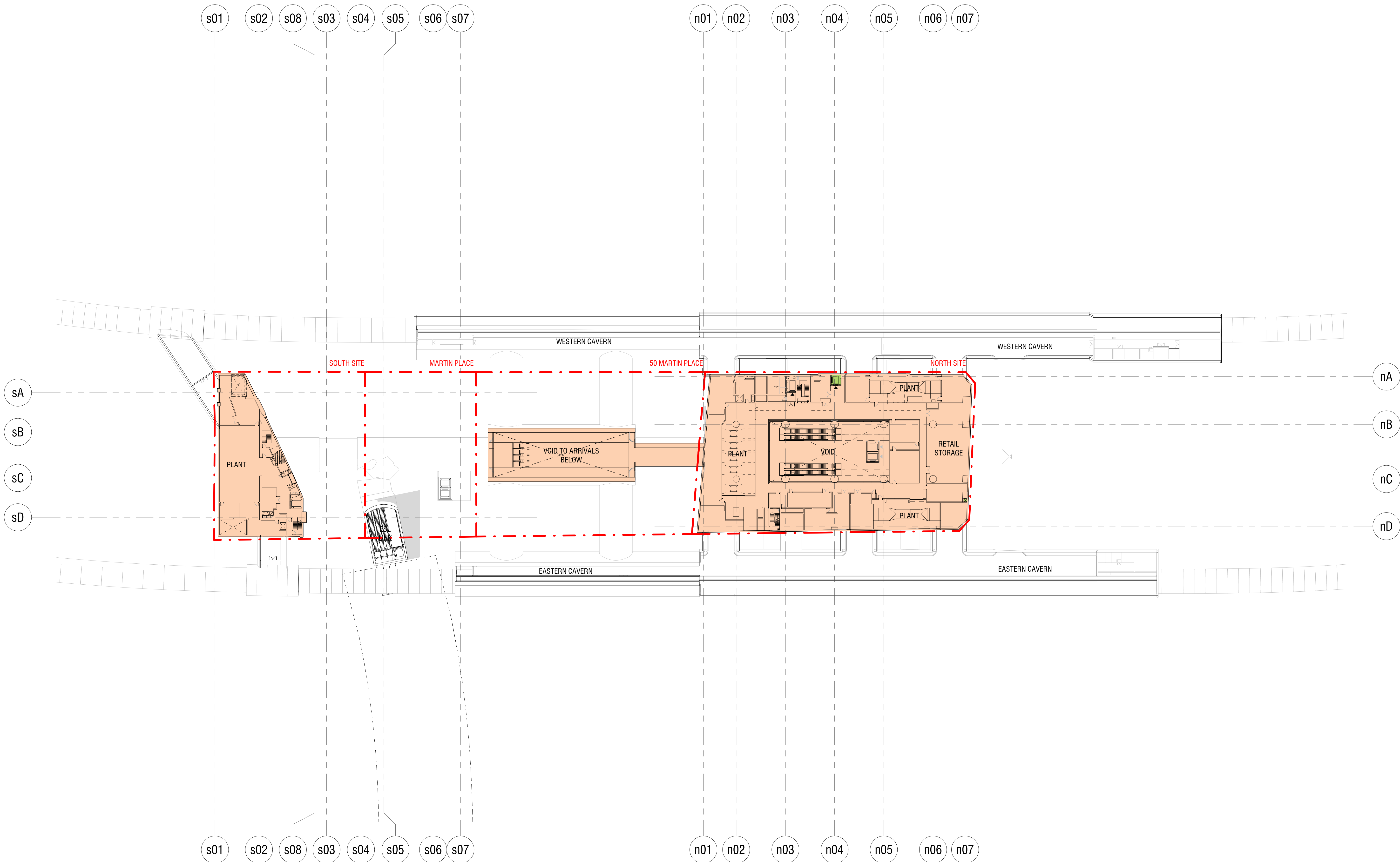
Drawing Title

**B5 PLATFORM DEMARCATION
PLAN**

Status
STAGE II SSDA

Drawing Number
CSWSMP- MAC- SMA- AT- DRG- DA- 398500_B

Revision
B



Rev	App	Ckd	Revision or reason for issue	Date	Notes
0	AC	MC	STAGE 1 SSDA	May 2017	This architectural package describes metro-related areas. Refer to Tzannes for South OSD and JPW for North OSD.
1	AC	MC	STAGE II SSDA - DRAFT ISSUE	29.06.2018	
2	AC	MC	STAGE II SSDA - DRAFT ISSUE	01.08.2018	CSSE detail is indicative and subject to separate approval.
3	AC	MC	STAGE II SSDA - DRAFT ISSUE (PRELIM)	09.08.2018	
4	AC	MC	STAGE II SSDA - DRAFT ISSUE	09.08.2018	Final OSD detail on station levels is subject to issue of the relevant construction certificate and approved Station Design and Precinct Plan.
A	AC	MC	STAGE II SSDA - DRAFT ISSUE	10.08.2018	
B	AC	MC	STAGE II SSDA	23.08.2018	Street trees, furniture, and other public domain elements within the precinct are indicative only and are subject to relevant approvals and detailed coordination with new and existing underground utilities and infrastructure.

Legend
--- SSD approval site boundary
 SSD Areas
 CSSE Areas
 Structure included as part of CSSE application, finishes and fitout included in SSD application

Scale / North Point

1:500 @ A1, 1:1000 @ A3

0 5 10 15 25

General Notes

Do not scale from drawing. Use marked dimensions. To be read in conjunction with all other Consultant's drawings. The Architect to be immediately notified of any discrepancies. Copyright on this drawing retained by the Architect.

Authoring Organisation

GRIMSHAW

Grimshaw
Level 2, 333 George Street, Sydney
New South Wales 2000 Australia

Telephone +61 2 9253 0200
Email info@grimshaw-architects.com

Architect

Tzannes

Tzannes
63 Myrtle Street, Chippendale
New South Wales 2008 Australia

Telephone +61 2 9319 3744
Email tzannes@tzannes.com.au

Architect

**JPW
JOHNSON PILTON WALKER**

Johnson Pilton Walker Pty Ltd ACN 095 778 886
Level 10 Plaza Building Australia Square 95 Pitt Street Sydney
New South Wales 2000 Australia

Telephone +61 2 9259 5900
Email jpww@jpww.com.au

Project Title

**SYDNEY METRO MARTIN PLACE -
integrated station development**



Client
Macquarie Group Ltd
50 Martin Place, Sydney
New South Wales 2000 Australia

Telephone +61 2 8232 3333
Email www.macquarie.com

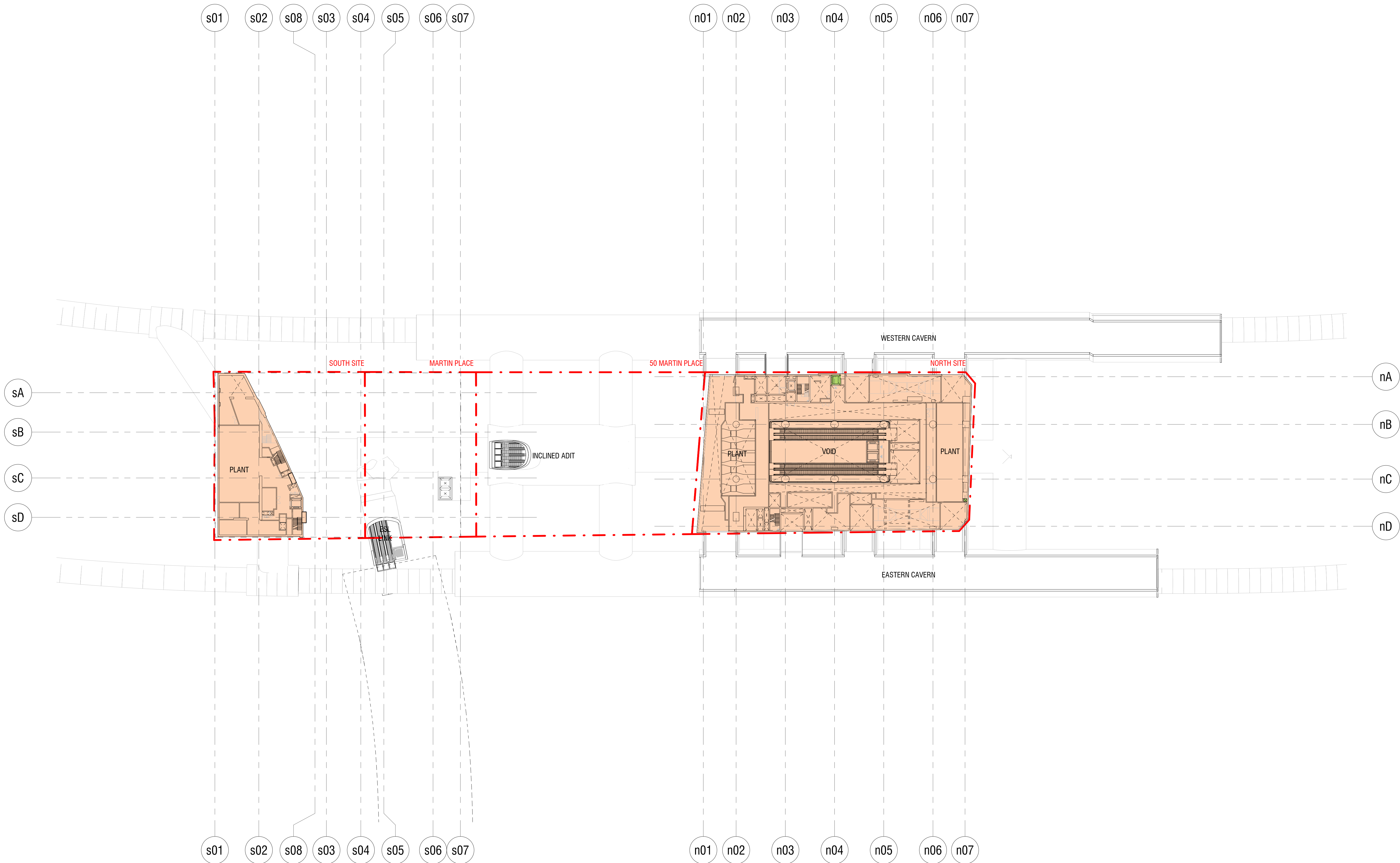
Drawing Title

**B4 STATION PLANT DEMARCATON
PLAN**

Status
STAGE II SSDA

Drawing Number
CSWSMP- MAC- SMA- AT- DRG- DA- 398400 _B

Revision
B



Rev	App	Ckd	Revision or reason for issue	Date	Notes
0	AC	MC	STAGE 1 SSDA	May 2017	This architectural package describes metro-related areas. Refer to Tzannes for South OSD and JPW for North OSD.
1	AC	MC	STAGE II SSDA - DRAFT ISSUE	29.06.2018	
2	AC	MC	STAGE II SSDA - DRAFT ISSUE	01.08.2018	CSST detail is indicative and subject to separate approval.
3	AC	MC	STAGE II SSDA - DRAFT ISSUE (PRELIM)	09.08.2018	
4	AC	MC	STAGE II SSDA - DRAFT ISSUE	09.08.2018	Final OSD detail on station levels is subject to issue of the relevant construction certificate and approved Station Design and Precinct Plan.
A	AC	MC	STAGE II SSDA - DRAFT ISSUE	10.08.2018	
B	AC	MC	STAGE II SSDA	23.08.2018	Street trees, furniture, and other public domain elements within the precinct are indicative only and are subject to relevant approvals and detailed coordination with new and existing underground utilities and infrastructure.

Legend
--- SSD approval site boundary
 SSD Areas
 CSST Areas
 Structure included as part of CSST application, finishes and fitout included in SSD application

Scale / North Point

1:500 @ A1, 1:1000 @ A3

0 5 10 15 25

General Notes

Do not scale from drawing. Use marked dimensions. To be read in conjunction with all other Consultant's drawings. The Architect to be immediately notified of any discrepancies. Copyright on this drawing retained by the Architect.

Authoring Organisation

GRIMSHAW

Grimshaw
Level 2, 333 George Street, Sydney
New South Wales 2000 Australia

Telephone +61 2 9253 0200
Email info@grimshaw-architects.com

Architect

Tzannes

Tzannes
63 Myrtle Street, Chippendale
New South Wales 2008 Australia

Telephone +61 2 9319 3744
Email tzannes@tzannes.com.au

Architect

**JPW/
JOHNSON PILTON WALKER**

Johnson Pilton Walker Pty Ltd ACN 095 778 886
Level 10 Plaza Building Australia Square 95 Pitt Street Sydney
New South Wales 2000 Australia

Telephone +61 2 9259 5900
Email jpww@jpww.com.au

Project Title

**SYDNEY METRO MARTIN PLACE -
integrated station development**


MACQUARIE
BANK

Client
Macquarie Group Ltd
50 Martin Place, Sydney
New South Wales 2000 Australia

Telephone +61 2 8232 3333
Email: www.macquarie.com

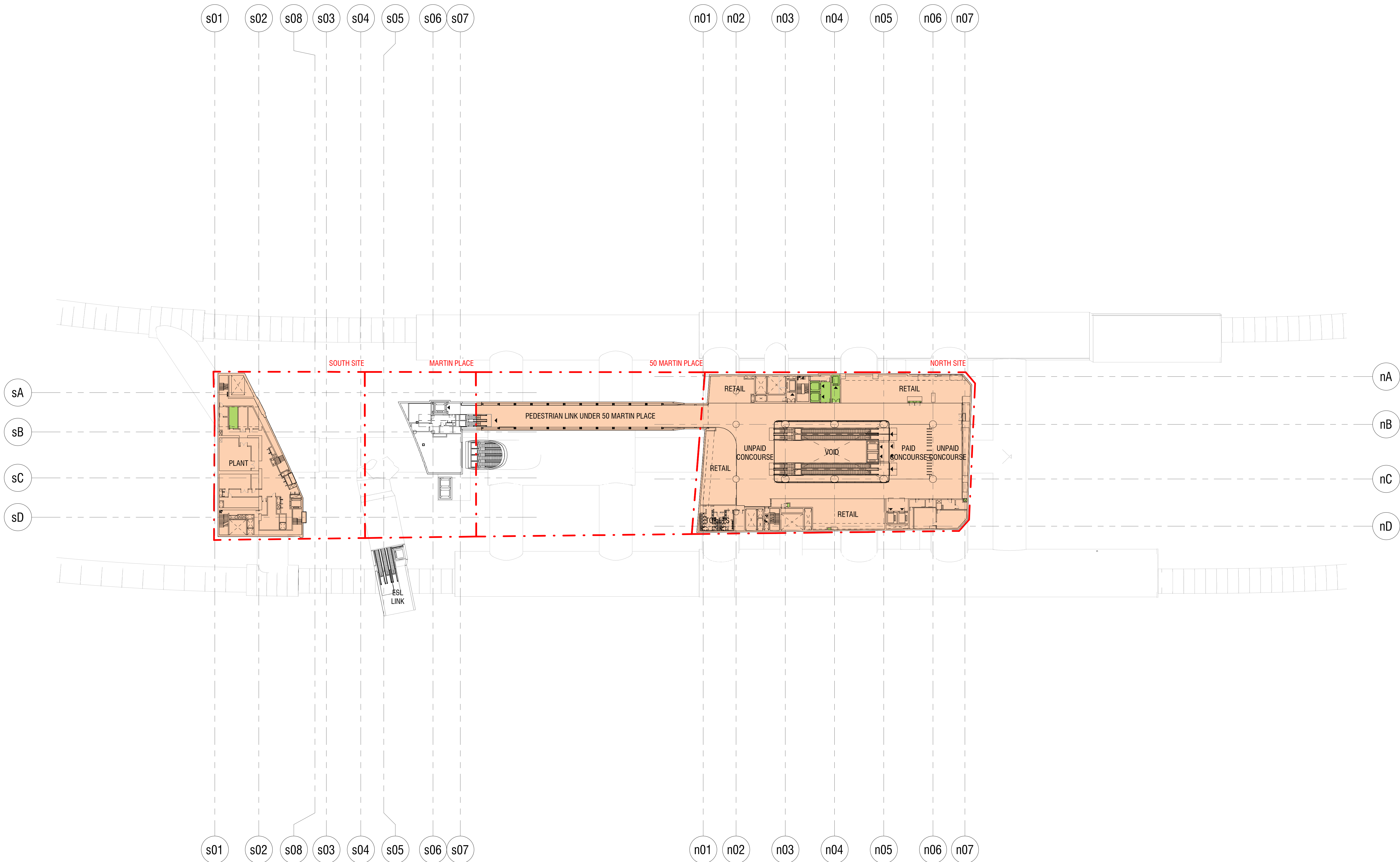
Drawing Title

**B4 MEZZANINE STATION PLANT
DEMARICATION PLAN**

Status
STAGE II SSDA

Drawing Number
CSWSMP- MAC- SMA- AT- DRG- DA- 397010 _B

Revision
B



Rev	App	Ckd	Revision or reason for issue	Date	Notes
0	AC	MC	STAGE 1 SSDA	May 2017	This architectural package describes metro-related areas. Refer to Tzannes for South OSD and JPW for North OSD.
1	AC	MC	STAGE II SSDA - DRAFT ISSUE	29.06.2018	
2	AC	MC	STAGE II SSDA - DRAFT ISSUE	01.08.2018	CSST detail is indicative and subject to separate approval.
3	AC	MC	STAGE II SSDA - DRAFT ISSUE (PRELIM)	09.08.2018	
4	AC	MC	STAGE II SSDA - DRAFT ISSUE	09.08.2018	Final OSD detail on station levels is subject to issue of the relevant construction certificate and approved Station Design and Precinct Plan.
A	AC	MC	STAGE II SSDA - DRAFT ISSUE	10.08.2018	
B	AC	MC	STAGE II SSDA	23.08.2018	Street trees, furniture, and other public domain elements within the precinct are indicative only and are subject to relevant approvals and detailed coordination with new and existing underground utilities and infrastructure.

Legend
--- SSD approval site boundary
 SSD Areas
 CSST Areas
 Structure included as part of CSST application, finishes and fitout included in SSD application

Scale / North Point

1:500 @ A1, 1:1000 @ A3

0 5 10 15 25

General Notes

Do not scale from drawing. Use marked dimensions. To be read in conjunction with all other Consultant's drawings. The Architect to be immediately notified of any discrepancies. Copyright on this drawing retained by the Architect.

Authoring Organisation

GRIMSHAW

Grimshaw
Level 2, 333 George Street, Sydney
New South Wales 2000 Australia

Telephone +61 2 9253 0200
Email info@grimshaw-architects.com

Architect

Tzannes

Tzannes
63 Myrtle Street, Chippendale
New South Wales 2008 Australia

Telephone +61 2 9319 3744
Email tzannes@tzannes.com.au

Architect

**JPW
JOHNSON PILTON WALKER**

Johnson Pilton Walker Pty Ltd ACN 095 778 886
Level 10 Plaza Building Australia Square 95 Pitt Street Sydney
New South Wales 2000 Australia

Telephone +61 2 9259 5900
Email jpjw@jpjw.com.au

Project Title

**SYDNEY METRO MARTIN PLACE -
integrated station development**



Client
Macquarie Group Ltd
50 Martin Place, Sydney
New South Wales 2000 Australia

Telephone +61 2 8232 3333
Email: www.macquarie.com

Drawing Title

**B3 PLANT / CONCOURSE
DEMARICATION PLAN**

Status
STAGE II SSDA

Drawing Number
CSWSMP- MAC- SMA- AT- DRG- DA- 398300_B

Revision
B