

SYDNEY FOOTBALL STADIUM REDEVELOPMENT

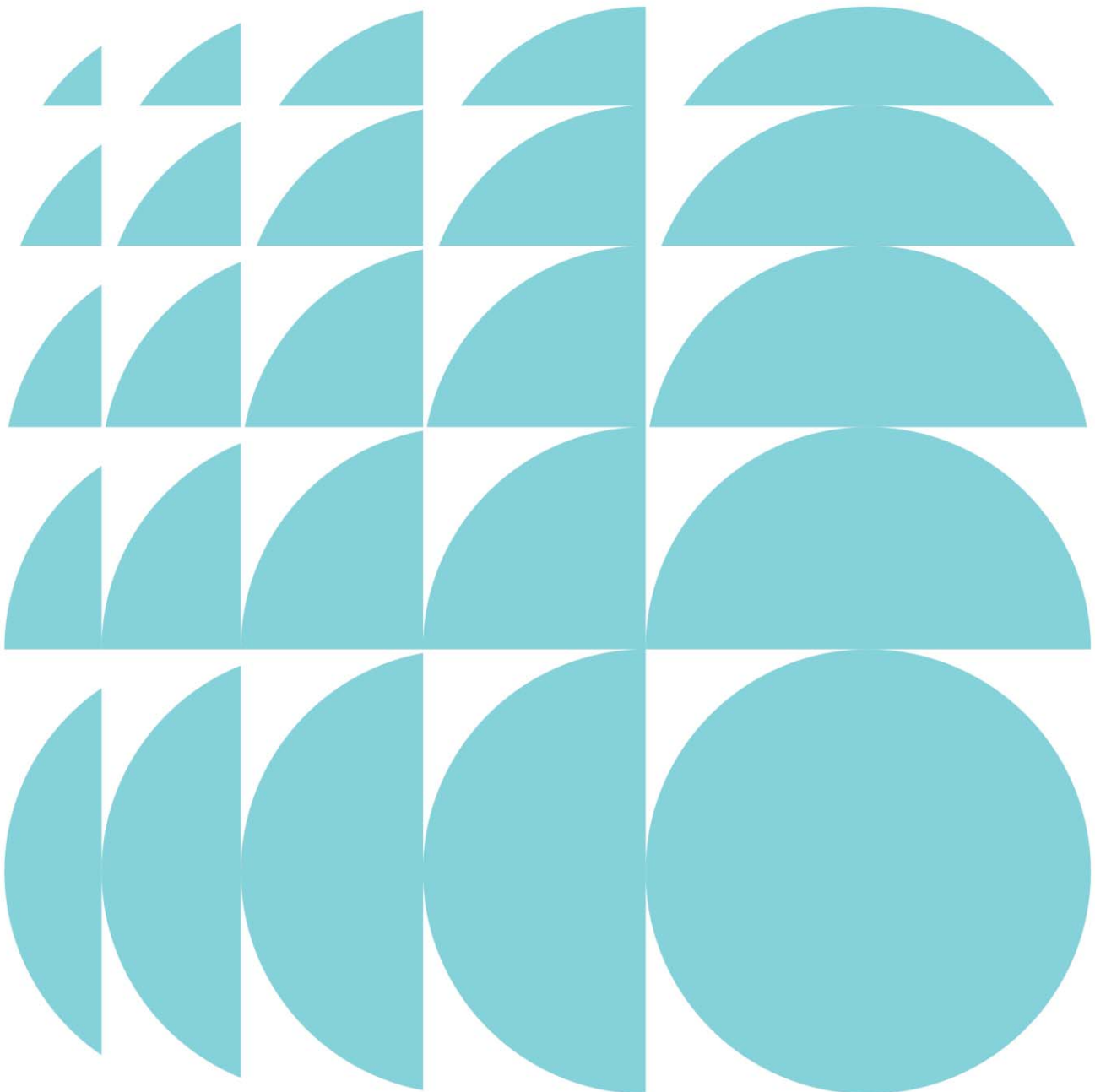
STATE SIGNIFICANT DEVELOPMENT APPLICATION

Concept Proposal and Stage 1 Demolition

SSDA 9249

APPENDIX G:

Stakeholder and Public Engagement Outcomes Report



CONTACT

Ross Hornsey	Director	rhornsey@ethosurban.com	0426 890 186
--------------	----------	-------------------------	--------------

Reproduction of this document or any part thereof is not permitted without prior written permission of Ethos Urban Pty Ltd.

This document has been prepared by:



Fee Chemke-Dreyfus and
Georgie Hunt

21/05/18

This document has been reviewed by:



Ross Hornsey

23/05/18

Reproduction of this document or any part thereof is not permitted without written permission of Ethos Urban Pty Ltd. Ethos Urban operates under a Quality Management System. This report has been prepared and reviewed in accordance with that system. If the report is not signed, it is a preliminary draft.

VERSION NO. 1

23/05/18

REVISION BY

APPROVED BY

Ethos Urban Pty Ltd
ABN 13 615 087 931.
www.ethosurban.com
173 Sussex Street, Sydney
NSW 2000 t 61 2 9956 6952

1.0	Executive Summary	3
2.0	Introduction	5
2.1	Background	5
3.0	Site Description	7
3.1	Overview of Proposed Development	8
4.0	Engagement Approach and Objectives	10
4.1	Engagement objectives	10
5.0	Engagement snapshot	11
6.0	Engagement Methodology	12
6.1	Letterbox drop	12
6.2	Newspaper advert	12
6.3	Stakeholder letters	12
6.4	Sydney Football Stadium project specific website	12
6.5	Infrastructure NSW project page	13
6.6	Project email and phone number	14
6.7	Sydney Cricket and Sports Ground Trust communications	14
6.8	NSW Government Stadia Engagement	14
7.0	Engagement Activities	15
7.1	Pop-up stalls	15
7.2	Sydney Cricket and Sports Ground Trust members information sessions	16
7.3	Community information sessions	16
7.4	Stakeholder briefings	16
7.5	Agency meetings	17
8.0	Summary of feedback received	18
8.1	Community information sessions	18
8.2	Pop-up stalls	24
8.3	Members information sessions	24
8.4	Stakeholder briefings	26
8.5	Agency meetings	28
8.6	Aboriginal consultation	31
8.7	NSW Government stadia engagement	31
8.8	Email enquiries	32
8.9	Have Your Say website data	33
9.0	Consultation during formal public exhibition	36
10.0	Conclusion and next steps	37

1.0 Executive Summary

This stakeholder and public engagement outcomes report has been prepared by Ethos Urban on behalf of Infrastructure NSW to outline the communication and stakeholder engagement undertaken and present feedback received during the preparation of the Stage 1 Concept Development Application for the Sydney Football Stadium. In undertaking this consultation, full consideration was given to the NSW Department of Planning and Environment's Secretary's Environmental Assessment Requirements (SEARs) for the project.

The Sydney Football Stadium is a significant component of the sports facilities that comprise the Sydney Cricket and Sports Ground. Completed in 1988, the Sydney Football Stadium has hosted numerous sporting events in its 30 years of operation for a number of sporting codes including football (soccer), rugby league and rugby union as well as occasional music concerts.

In 2012, the NSW Government announced the *NSW Stadia Strategy 2012* which provided a vision for the future of stadia within NSW, prioritising investment to achieve the optimal mix of venues to meet community needs and to ensure a vibrant sports and event environment in NSW. A key component of the strategy included development of master plans for Tier 1 stadia and their precincts covering transport, integrated ticketing, spectator experience, facilities for players, media, corporate and restaurant and provision for entertainment. On 24 November 2017, the NSW Premier announced the redevelopment of the SFS into a world-class stadium with up to 45,000 seats. The redevelopment will include demolition of the existing facility and replacement with a modern, globally competitive stadium that achieves the requirements for a Tier 1 stadium to meet future requirements.

This report supports a State Significant Development (SSD) Development Application (DA) for the redevelopment of the Sydney Football Stadium which is submitted to the Minister for Planning pursuant to Part 4 of the Environmental Planning and Assessment Act 1979 (EP&A Act). A staged approach to the planning applications is proposed which includes:

- Stage 1 – Concept Proposal for the stadium envelope and supporting retail and functional uses as well as development consent for the carrying out of early works, including demolition of the existing facility and associated structures.
- Stage 2 – detailed design, construction and operation of the stadium and supporting business, retail and functional uses.

This report relates to all community consultation and stakeholder engagement activities for the Stage 1 Concept DA and detailed Early Works package.

A proactive and strategic approach to the communication and stakeholder engagement for the Stage 1 Concept DA was taken. In delivering this approach, the transparent and comprehensive stakeholder engagement was:

- Timely;
- Genuine and constructive;
- Broad reaching; and
- Engaging.

The overarching objectives of the consultation were to:

- Facilitate collaboration with all stakeholders and government authorities;
- Ensure the audiences are broadly reached;
- Minimise opportunity for speculation and misinformation;
- Improve stakeholder relationships, particularly with key local resident action groups;
- Ensure adequate time for the team to incorporate feedback into the Stage 1 Concept DA; and
- Promote confidence in the project and decision makers.

A variety of communications were used to promote the consultation. These included:

- Letterbox drop to 23,000 local residents;
- 83 stakeholder letters;
- 4 newspaper advertisements;
- Establishment of 1800 number and email address; and
- Project website.

21 face-to-face consultation events were held, which included:

- Three community information sessions;
- Two Sydney Cricket and Sports Ground Trust members only sessions;
- Four pop up stalls; and
- 12 stakeholder meetings.

Most of the feedback received to date focuses on:

- Improving transport options to reduce traffic in the area;
- Removing parking on Moore Park grounds;
- Improving connectivity between Paddington and Anzac Parade;
- Improving the design, amenity and facilities of the new stadium; and
- Concern about the loss of members facilities.

Throughout this process, Infrastructure NSW has kept all stakeholders, including the local community, government authorities, Centennial and Moore Park Trust and the Sydney Cricket Ground Trust up to date with the development of this proposal, prior to lodgement of the Stage 1 Concept DA.

Infrastructure NSW will continue to engage with all stakeholders and the community during the exhibition of the Stage 1 Concept DA as well as during future stages of the planning process.

2.0 Introduction

This stakeholder and public engagement outcomes report has been prepared by Ethos Urban on behalf of Infrastructure NSW to outline the communication and stakeholder engagement approach undertaken and highlight issues raised during the preparation Stage 1 Concept Development Application for the Sydney Football Stadium. In undertaking this consultation, full consideration was given to the NSW Department of Planning and Environment's Secretary's Environmental Assessment Requirements for the project.

This report supports a State Significant Development (SSD) Development Application (DA) for the redevelopment of the Sydney Football Stadium which is submitted to the Minister for Planning pursuant to Part 4 of the Environmental Planning and Assessment Act 1979 (EP&A Act). A staged approach to the planning applications is proposed which includes:

- Stage 1 – Concept Proposal for the stadium envelope and supporting retail and functional uses as well as development consent for the carrying out of early works, including demolition of the existing facility and associated structures.
- Stage 2 – detailed design, construction and operation of the stadium and supporting business, retail and functional uses.

This report relates to all communication and stakeholder engagement for the Stage 1 Concept DA and detailed Early Works package.

2.1 Background

The Sydney Football Stadium is a significant component of the sports facilities that comprise the Sydney Cricket and Sports Ground. Completed in 1988, the SFS has hosted numerous sporting events in its 30 years of operation for a number of sporting codes including football (soccer), rugby league and rugby union as well as occasional music concerts.

In 2012, the NSW Government announced the *NSW Stadia Strategy 2012* which provided a vision for the future of stadia within NSW, prioritising investment to achieve the optimal mix of venues to meet community needs and to ensure a vibrant sports and event environment in NSW. A key component of the strategy included development of master plans for Tier 1 stadia and their precincts covering transport, integrated ticketing, spectator experience, facilities for players, media, corporate and restaurant and provision for entertainment. SFS is one of three Tier 1 stadia within NSW, the others being Stadium Australia (Olympic Park) and the Sydney Cricket Ground. In order to qualify for Tier 1 status, a stadium is required to include:

- Seating capacity greater than 40,000;
- Regularly host international sporting events;
- Offer extensive corporate facilities, including suites, open-air corporate boxes and other function/dining facilities; and
- Be the home ground for sporting teams playing in national competitions.

Following release of the NSW Stadia Strategy, the Sydney Cricket and Sports Ground Trust (SCSGT) undertook master planning culminating in the 2015 Preliminary SCG Master Plan. This master plan defines the context for future redevelopment of the SCG, SFS and related sports infrastructure to ensure that the precinct continues to meet the needs and expectations of visitors and tenants into the future.

In a competitive national landscape, the existing Allianz Stadium (SFS) is now facing serious commercial and operational challenges to remain relevant and competitive. The SFS was constructed many years ago and therefore it fails to meet certain criteria for modern Tier 1 stadiums. The stadium has aged poorly and fails to meet expectations with regards to patron experience, crowd management, safety/security, accessibility, facilities for core tenants, operational efficiency, premium hospitality and food/beverage offerings and media requirements.

On 24 November 2017, the NSW Premier announced the redevelopment of the SFS into a world-class stadium with up to 45,000 seats. The redevelopment will include demolition of the existing facility and replacement with a modern, globally competitive stadium that achieves the requirements for a Tier 1 stadium to meet future requirements.

Redevelopment of the SFS will assist in supporting the realisation of the Master Plan principles to:

- Create a flexible venue suitable for sports, e-sports and major events alike;
- Include technology for the future;
- Create a venue for the growth of men's and women's elite sport, as well as the ability to adapt to new sports and the rise of e-sports;
- Create a publicly accessible entertainment and recreational facility;
- Create a stadium integrated with its surrounds including Centennial and Moore Parks and the surrounding residential and business areas; and
- Create a sustainable future.



NRL Roosters game day, SFS forecourt

3.0 Site Description

The site is located at 40-44 Driver Avenue, Moore Park within the Sydney Cricket Ground Precinct. It is bound by Moore Park Road to the north, Paddington Lane to the east, the existing SCG stadium to the south and Driver Avenue to the west. The site is located within the City of Sydney local government area.

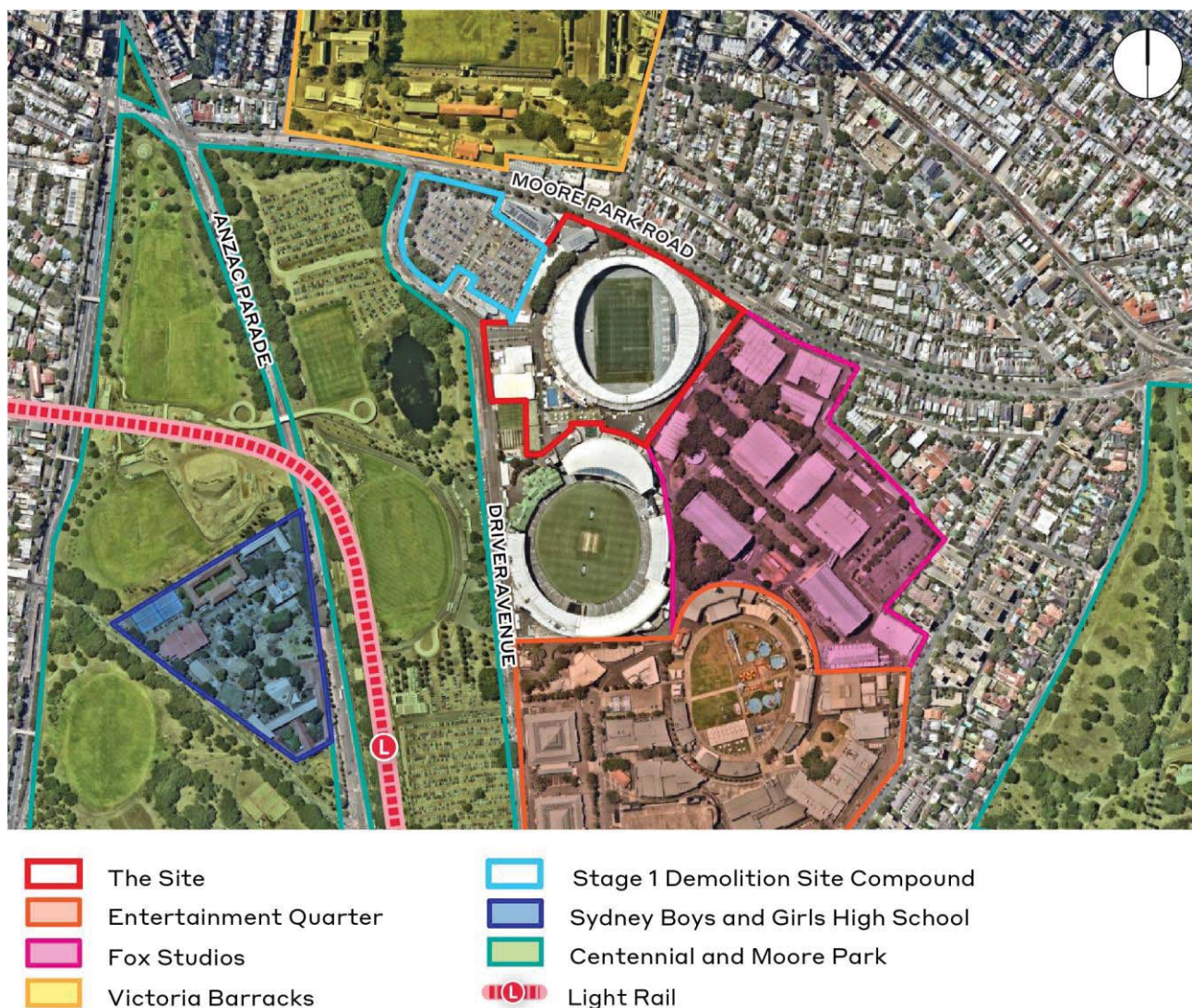
The site is legally described as Lots 1528 and 1530 in Deposited Plan 752011 and Lot 1 in Deposited Plan 205794. The site is Crown Land, with the SCSGT designated as the sole trustee under the *Sydney Cricket and Sports Ground Act 1978*. The site is wholly contained within designated land controlled by the Sydney SCSGT under Schedule 2A of the *Sydney Cricket and Sports Ground Act 1978*.

In a broader context, the site is largely surrounded by Centennial and Moore Parks, the Fox Studios and Entertainment Quarter precincts and the residential suburb of Paddington. Located approximately three kilometres from the Sydney CBD and approximately two kilometres from Central Station, the site is connected to Sydney's transport network through existing bus routes and will benefit from a dedicated stop on the soon to be completed Sydney CBD and South East Light Rail.

The locational context of the Site is shown below, whilst the site boundaries and existing site features are shown on the following page.



Regional site context



Site area and local context

3.1 Overview of Proposed Development

The SFS Redevelopment Stage 1 application includes a Concept Proposal and Early Works package. The Concept Proposal comprises:

- A new stadium with up to 45,000 seats on the site of the existing stadium including:
 - New facilities for general admission;
 - New playing pitch;
 - Hospitality facilities; and
 - Ancillary food and beverage and entertainment facilities.
- New basement with service vehicular access for servicing and bump-in/bump-out.
- New public domain works surrounding the stadium, building on the venue's unique parkland setting.
- Urban Design and Public Domain Guidelines.
- Signage strategy.

Indicative concept building envelope plans are included within the Environmental Impact Statement for the project. These plans outline the extent of the proposed stadium building envelope and surrounding public domain to be included in the Stage 1 planning application.

From a capacity, operational and mix-of-use perspective, the new stadium will be consistent with the existing Allianz Stadium.

The Stage 1 Early Works comprises:

- Site establishment, including erection of site protection fencing and temporary relocation of facilities;
- Decommissioning and demolition of the existing stadium and associated structures including the existing Sheridan, Roosters and Waratahs buildings and the administration building of Cricket NSW to ground level and 'make safe' of the site;
- Use of the existing Moore Park 1 (MP1) car park for construction staging; and
- Make good of the site suitable for construction of the new stadium (subject to separate Stage 2 application).

The SFS Redevelopment will create a new stadium with up to 45,000 seats through a range of seating styles and corporate facilities. The stadium will include state of the art technology with digital screens throughout to improve the fan experience. Sightlines will be improved and facilities including catering, amenities and accessibility will be designed to service future needs, creating a world-class customer experience befitting a global city such as Sydney.

4.0 Engagement Approach and Objectives

On behalf of Infrastructure NSW, Ethos Urban undertook a proactive and strategic program of community consultation and stakeholder engagement during the preparation of the Stage 1 Concept DA. In delivering this approach, the transparent and comprehensive stakeholder engagement process was designed to be:

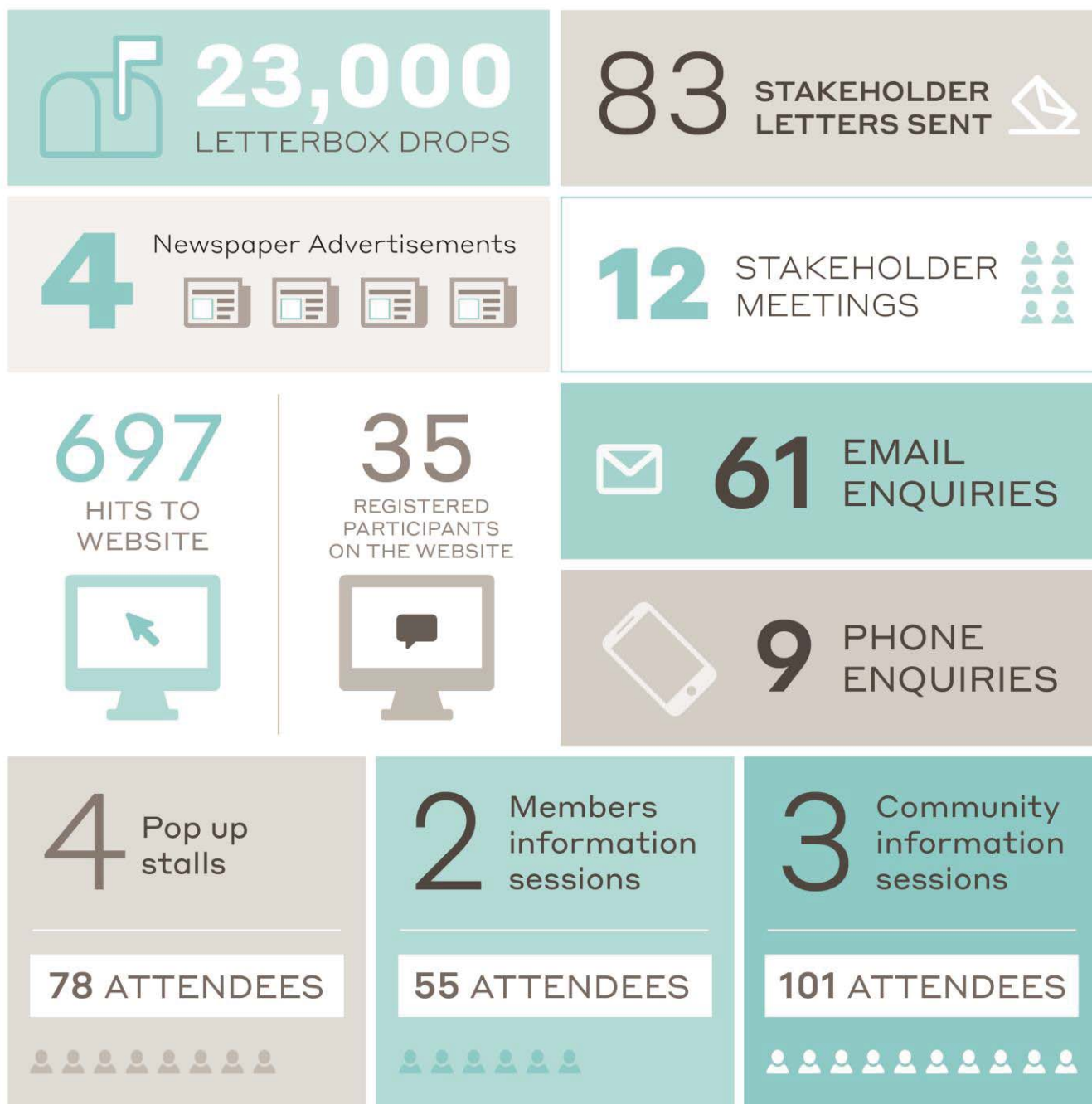
- **Timely** – occurred throughout the planning process to provide the community and stakeholders with the opportunity to provide important feedback at key milestones.
- **Genuine and constructive** – provided transparent and genuine opportunities for people to be involved in the project and participate in open conversations to help build trust in the project.
- **Broad** – worked with key stakeholders such as councils, government agencies, members of parliament, local community and businesses, local media, business chambers of commerce, key community groups.
- **Engaging** – motivating participation, particularly when time poor can be difficult. Engaging activities included a mix of face to face and online tools were deployed to maximise participation and reach.

4.1 Engagement objectives

The following objectives were developed in partnership with Infrastructure NSW:

- That the engagement strategy meets all statutory and stakeholder requirements in terms of public information and consultation throughout the planning process;
- The project team collaborates with all stakeholders and agencies, including Centennial and Moore Park Trust and other adjoining land owners;
- Project benefits, impacts and constraints are presented and discussed transparently;
- To coordinate with the Sydney Cricket Ground Trust to ensure the public have access to a clear picture of the overall operational and development considerations for the project;
- To proactively engage and motivate participation with key stakeholders and the community through the development of effective communications;
- Enhance stakeholder communications and relationships in the local area; and
- Ensure the project team has an opportunity to incorporate feedback into the Stage 1 Concept DA.

5.0 Engagement snapshot



Snapshot of engagement figures

6.0 Engagement Methodology

This section of the report outlines the engagement methodology undertaken during the preparation of the Stage 1 Concept DA.

6.1 Letterbox drop

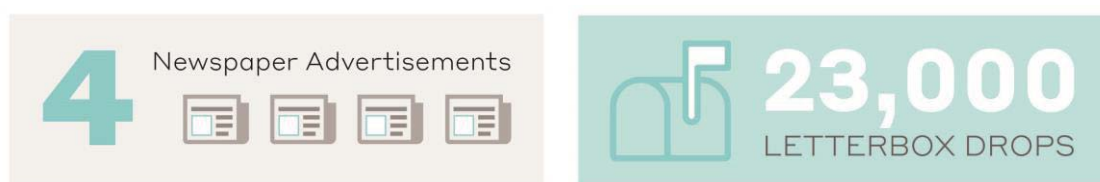
A postcard was distributed to 23,000 surrounding local residents between 11 and 14 April 2018 to announce the start of the planning process and to invite interested residents to attend one of the community information sessions being held by Infrastructure NSW. A copy of the postcard can be found in **Appendix A** and a map of the distribution range can be found in **Appendix B**.

6.2 Newspaper advert

Newspaper advertisements were placed in the following local papers on Wednesday 11 April and Wednesday 18 April 2018:

- Wentworth Courier (67,000 print readership); and
- Southern Courier (65,000 print readership).

The purpose of the advertisement was to announce the start of the planning process and invite interested residents to attend one of the community information sessions being held by Infrastructure NSW. A copy of the newspaper advertisement can be found in **Appendix C**.



6.3 Stakeholder letters

Letters were sent to 83 stakeholders from 25 different organisations providing them with information about the project, an update on the planning process and offering a briefing session and seeking feedback prior to the application being submitted. A copy of a generic stakeholder letter and stakeholder organisation list can be found in **Appendix D**. In total, 12 stakeholder meetings were held. Summary notes and team responses from each meeting can be found in Section 8 of this report.

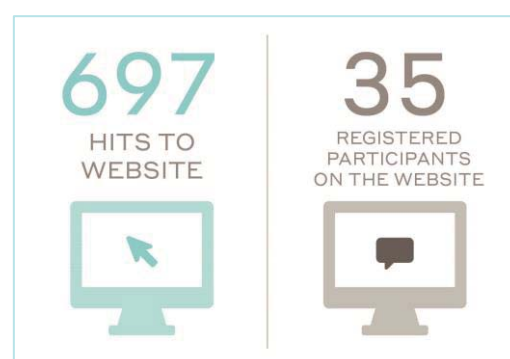
6.4 Sydney Football Stadium project specific website

A project specific website – <https://yoursaysfsredevelopment.insw.com> - was established and made live on Wednesday 11 April 2018. The purpose of the website was to provide interested stakeholders with detailed information about the project, as well as providing a forum to receive feedback and suggestions by the community about the proposed redevelopment.

Visitors to the website were invited to participate in the following engagement tools:

- Visitor experience feedback;
- Transport/travel patterns; and
- Stadium suggestion map.

In total, 697 people visited the website between 11 April and 21 May 2018, and 35 signed up to receive more information. 21 participated in the visitor experience survey, 20 in the transport/travel patterns survey and nine provided suggestions for an improved stadium experience. Detailed results can be found in Section 8 of this report.





Welcome to the Have Your Say hub for the Sydney Football Stadium Redevelopment. Here you can participate in online discussion forums, sign up to our email list and find out about upcoming community information sessions.

Learn About the Redevelopment



Homepage of interactive project specific website

6.5 Infrastructure NSW project page

The purpose of the Infrastructure NSW website - <http://www.infrastructure.nsw.gov.au/projects-nsw/sydney-football-stadium-redevelopment/> was to act as a landing page for the public and to provide a snapshot of the project. The website was made live on Wednesday 11 April 2018.

The information provided on this project page includes:

- Project overview;
- Planning process;
- Contact details for engagement team;
- Community information session details;
- Link to the Have Your Say project specific website;
- Frequently asked questions; and
- Links to Community Update #1 and display boards.

6.6 Project email and phone number

A project email address and telephone number were set up to provide local residents and stakeholders with an outlet to ask questions and provide feedback about the project. A total of 9 calls and 61 emails were received and responded to, covering a variety of concerns and questions. A summary of issues raised through the project email and phone number can be found in Section 8 of this report.



6.7 Sydney Cricket and Sports Ground Trust communications

Sydney Cricket and Sports Ground Trust issued an e-newsletter inviting all members (19,000) to attend the information sessions and members only sessions. The purpose of the members only sessions were to provide members with specific information about the project and the temporary relocation of members facilities.

6.8 NSW Government Stadia Engagement

Concurrently with the Sydney Football Stadium Redevelopment consultation, Infrastructure NSW has been undertaking a number of briefings with a broad range of stakeholders regarding the NSW Government's stadia wide strategy, which includes the Redevelopment of the Sydney Football Stadium. Section 8 of this report provides a summary of stakeholders and the key issues raised.

7.0 Engagement Activities

This section of the report summarises the activities held during the pre-lodgement engagement period. A total of 21 face-to-face consultation events were held, which included:

- Three community information sessions;
- Two members only sessions;
- Four pop up stalls; and
- 12 stakeholder meetings.

Date	Time	Event Type	Location	Attendees
Tuesday 17 April 2018	6.30pm-8.00pm	Pop-up stall at Sydney FC game #1	Sydney Football Stadium	14
Friday 20 April 2018	6.00pm-7.45pm	Pop-up stall at Waratahs game #2	Forecourt, Driver Avenue	10
Saturday 21 April 2018	10.00pm-4.00pm	Pop-up stall at Paddington Markets #3	Paddington Markets, Paddington Public School	29
Wednesday 2 May 2018	8.00am-10.00am	SCGT members information session #1	The Captains Bar, Sydney Football Stadium	25
	5.00pm-7.00pm	SCGT members information session #2		30
Thursday 3 May 2018	5.00-8.00pm	Community information session #1		27
Sunday 6 May 2018	2.00-4.00pm	Pop-up stall at Roosters game #4		25
Tuesday 8 May 2018	5.00-8.00pm	Community information session #2		40
Saturday 12 May 2018	10.00am-1.00pm	Community information Session #3		36
			TOTAL	236



7.1 Pop-up stalls

In total, four pop up stalls were held at sports games and at the Paddington Markets. The purpose of the pop-up stalls was to speak to sports fans passers-by (stadium users) as well as local residents (Paddington Markets) in an informal setting, allowing an opportunity for people to participate in the conversation, ask questions and provide feedback. Project team staff attended the pop-up stalls, and summary information was provided on the project with general feedback recorded.

7.2 Sydney Cricket and Sports Ground Trust members information sessions

Two members only sessions were held at the Sydney Football stadium in the morning and in the evening. The purpose of these session was to provide members with an opportunity to ask specific questions about members facilities during construction and after the new stadium has been completed. Representatives from the SCGT were on hand to answer members questions.

7.3 Community information sessions

Three community information sessions were held (two weeknights and one Saturday morning) at the Sydney Football Stadium. Members of the project team from different disciplines were there to answer questions, provide information about specific technical details including noise, traffic, sustainability, urban design, heritage and planning. Information was displayed on A0 boards and people were able to take a copy of the community update. A copy of the display boards can be found in **Appendix E** and the community update can be found in **Appendix F**.

Representatives from both the communications and assessment teams of the Department of Planning and Environment attended all three sessions in order to observe community participation and provide information about the assessment process.

7.4 Stakeholder briefings



The table below provides a summary of all stakeholder briefings held, requested by each stakeholder group/representative following Infrastructure NSW's invitation letter.

Date	Time	Stakeholder group	Location
Tuesday 24 April 2018	9.00am – 10.00am	Centennial Park Residents Association	Rugby AU, Moore Park Road, Moore Park
	5.30pm – 6.30pm	Saving Moore Park	Moore Park
Monday 7 May 2018	2.00pm – 3.00pm	Alex Greenwich MP, Member for Sydney	Sydney Electorate Office 21 Oxford Street, Darlinghurst
Tuesday 8 May 2018	3.00pm – 4.00pm	Centennial and Moore Park Trust	SCGT, Moore Park Rd, Moore Park
Wednesday 9 May 2018	1.30pm – 2.15pm	Clover Moore, Sydney Lord Mayor and team	Sydney Town Hall 483 George Street, Sydney
	3.30pm – 4.30pm	Fox Studios	Rugby AU, Moore Park Road, Moore Park
Thursday 10 May 2018	11.00am – 12.00pm	Patricia Forsythe, Sydney Business Chamber	Infrastructure NSW 167 Macquarie Street, Sydney
	6.00pm – 7.00pm	Paddington-Darlinghurst Community Working Group and Paddington Heritage Society	Rugby AU, Moore Park Road, Moore Park

Date	Time	Stakeholder group	Location
Friday 11 May 2018	2.30pm – 3.30pm	City of Sydney Councillors: – Clr Forster – Clr Chung – Clr Phelps – Clr Vithoukaskas	City of Sydney Council Chamber 456 Kent Street, Sydney
Wednesday 16 May 2018	2.00pm – 3.00pm	Linda Scott and Donna Rygate, Local Government NSW	Local Government NSW 28 Margaret Street, Sydney
Friday 18 May 2018	9.00am – 10.00am	City of Sydney staff	City of Sydney Council 456 Kent Street, Sydney

7.5 Agency meetings

Consultation with the following agencies occurred during the initial stages of the planning process and following receipt of the Secretary's Environmental Assessment Requirements, prior to lodgement of the Stage 1 Concept DA.

It should be noted that the project team contacted all agencies listed in the SEARs to request meetings, however several agencies confirmed they did not require meetings. Summaries of meetings can be found in Section 8 of this report.

Date	Agency
Wednesday 28 February 2018	Transport for NSW, Roads and Maritime Services and Sydney Coordination Office
Thursday 8 March 2018	Sydney Water
Tuesday 13 March 2018	Government Architect NSW
Thursday 12 April 2018	Planning Focus Meeting
Tuesday 24 April 2018	Transport for NSW
Friday 27 April 2018	Department of Planning and Environment
Tuesday 1 May 2018	Government Architect NSW
Wednesday 9 May 2018	Department of Planning and Environment
Wednesday 9 May 2018	Clover Moore, Sydney Lord Mayor and team
Friday 18 May 2018	City of Sydney staff

8.0 Summary of feedback received

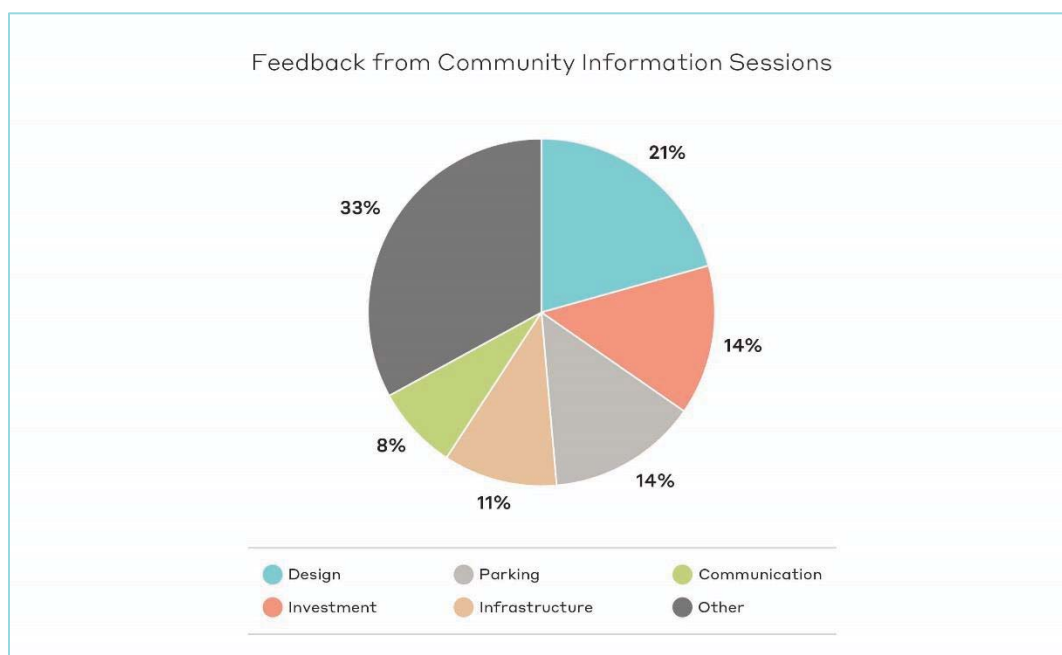
This section of the report provides a summary of the feedback received from the following consultation activities:

- Community information sessions;
- Pop up stalls;
- Sydney Cricket and Sports Ground Trust Members sessions;
- Stakeholder briefings;
- Agency meetings;
- Email and phone enquiries; and
- Website enquiries.

8.1 Community information sessions

The information below provides a summary of all feedback received at the three community information sessions.

The graph represents a summary of feedback forms and notes taken from the project team at the information sessions based on conversations with the community.



Topic	Feedback received	Project team response
• Design	• Preference for the current saddle-shaped roof design over the proposed coliseum shape for aesthetic purposes.	• The Concept Proposal does not determine the roof design, but rather establishes a maximum envelope within which the new stadium will be located. The detailed design of the new stadium will be determined through the Design Excellence Process, which includes a competitive process, and will be subject to the Stage 2 Development Application.
	• Belief that the new design isn't very different to the existing stadium.	• The Concept brief that is being designed will set out very different guidelines than what was built in 1988. From an aesthetic perspective the new stadium will be a coliseum style (rather than the existing saddle style), and there will be many more safety,

Topic	Feedback received	Project team response
		accessibility, landscaping and spectator features incorporated into the new stadium.
	<ul style="list-style-type: none"> Questions around who will be designing the brief for the new stadium. 	<ul style="list-style-type: none"> Cox Architecture are assisting with the preparation of the reference design which has informed the Urban Design Guidelines and will contribute to the tender process. This is the same firm responsible for the design of the existing stadium.
	<ul style="list-style-type: none"> Questions around when the detailed design will be available. 	<ul style="list-style-type: none"> Detailed design information will be available during Stage 2 planning process, expected to take place during 2019.
	<ul style="list-style-type: none"> Suggestion that lighting in and around the new stadium should be improved. 	<ul style="list-style-type: none"> Noted, this will be considered in the new design and consideration to this effect has been included in the Urban Design Guidelines that will inform the Stage 2 Development Application.
Noise	<ul style="list-style-type: none"> Interest in the measures that will be taken to reduce noise impacts of construction site. 	<ul style="list-style-type: none"> Infrastructure NSW is currently preparing and Environmental Impact Statement for the Demolition of the current and Concept Design of the new stadium. Within this report our acoustic engineers are assessing noise levels in the local area.
	<ul style="list-style-type: none"> Concerns raised around noise impacts of both the construction period and the increased number of events. 	<ul style="list-style-type: none"> The number of sporting events at the existing SFS are not limited, and it is important that this flexibility is retained to ensure that the new stadium continues to continue the role of the precinct as the premiere sporting precinct within the Eastern City. We expect that the new stadium will not seek to increase the number of concert/entertainment events, in order to ensure that noise impacts are not worsened in this respect. Currently noise impact assessments are being carried out to understand noise disruptions on neighbours and inform mitigations.
	<ul style="list-style-type: none"> Questions around the difference in noise impacts on local residents when comparing the existing stadium versus the new. 	<ul style="list-style-type: none"> It is anticipated that the new stadium should enclose the noise from events better than the current stadium due to the coliseum design versus the saddle shape.
Construction	<ul style="list-style-type: none"> Questions around how long the construction process will take. 	<ul style="list-style-type: none"> The demolition of the current stadium and the construction of the new will take approximately 3 years with completion in 2022, subject to planning approval.
	<ul style="list-style-type: none"> Questions around why the demolition occurs before a final design has been decided upon. 	<ul style="list-style-type: none"> The Stage 1 Development Application seeks consent for a Concept Proposal for the redevelopment of the SFS, as well as permission to demolish the existing stadium. Demolition is expected to take 8-12 months, during which time the detailed design and operational parameters will be developed further within the planning framework established under the Concept Proposal. Commencing demolition ahead of this ensures that the project can proceed in a timely manner to minimise the total closure period for the SFS.
Cycling	<ul style="list-style-type: none"> Interest in providing cycle paths around the stadium before construction phase to avoid added disruption. 	<ul style="list-style-type: none"> Infrastructure NSW will be working closely with the local councils, TfNSW and other stakeholders in planning for traffic and transport to, from and around the Stadium.
	<ul style="list-style-type: none"> Questions around what facilities will be provided for cyclists and if they'll be available for the public. 	<ul style="list-style-type: none"> Infrastructure NSW will be considering this feedback and opportunities to integrate cyclist facilities during the Stage 2 consultation process.

Topic	Feedback received	Project team response
Traffic	<ul style="list-style-type: none"> Concern that Moore Park Road is already a bottleneck. Seeking reassurance that traffic will be well assessed and traffic mitigated in the future. 	<ul style="list-style-type: none"> Traffic engineers are currently assessing the immediate and surrounding areas for the Environmental Impact Assessment that is required for Stage 1 of the SSDA. The findings of this report will determine the traffic mitigation measures taken in the future.
Patron experience and safety	<ul style="list-style-type: none"> Comment that the existing stadium's seating is on too much of an incline and can be scary for older people to get up and down- there are no railings for support. Preference to see this improved in the new stadium. 	<ul style="list-style-type: none"> The new stadium will comply with very strict modern accessibility standards to make the stadium safe for all- including the elderly and disabled. There will be many more dedicated accessible seats in the new stadium.
Connectivity	<ul style="list-style-type: none"> Preference to see better pedestrian connections between the Entertainment Quarter with the new stadium. 	<ul style="list-style-type: none"> The new stadium will allow for increased public access to the site, including the removal of the black fences along Moore Park Road and allowing for pedestrians to travel freely between Moore Park Road and Driver Avenue to provide more direct connections through to Moore Park, the Moore Park Light Rail Station and the Entertainment Quarter during both event and non-event periods.
	<ul style="list-style-type: none"> Lack of faith that Devonshire Street will become the new walking route of choice to the stadium once the light rail is complete. 	<ul style="list-style-type: none"> Infrastructure NSW will be working with TfNSW, City of Sydney and Centennial and Moore Park Trust on wayfinding to make this the preferred route. The smaller incline than Foveaux Street will also make Devonshire Street the route of preference.
	<ul style="list-style-type: none"> Preference to have better connection between the stadium and Oxford street. 	<ul style="list-style-type: none"> Infrastructure NSW will be working with both TfNSW, City of Sydney and Centennial and Moore Park Trust to provide better wayfinding in the future for pedestrians.
	<ul style="list-style-type: none"> Preference to see the two stadiums and precinct better integrated for improved pedestrian circulation. 	<ul style="list-style-type: none"> Infrastructure NSW has engaged urban designers to work on significantly improving the integration and landscaping around the stadium.
	<ul style="list-style-type: none"> Suggestion that there should be better taxi/uber/car drop off zones in the new stadium. 	<ul style="list-style-type: none"> Noted. Future engagement with NSW Taxi Council and TfNSW about point to point drop off zones will occur during Stage 2.
	<ul style="list-style-type: none"> Lack of faith that the new light rail will be able to cope with the stadium capacity numbers and therefore traffic will continue to be a problem. 	<ul style="list-style-type: none"> Infrastructure NSW will be working with TfNSW the local transport authorities in order to coordinate public transport options once the new stadium and light rail are complete.
	<ul style="list-style-type: none"> Concerns around the rumours of closing Driver Avenue. 	<ul style="list-style-type: none"> Infrastructure NSW does not intend on closing Driver Avenue as part of this proposal. Driver Avenue will continue to operate as it does currently, with intermittent closures on event days.
Economics	<ul style="list-style-type: none"> Preference to renovate, not demolish the stadium. 	<ul style="list-style-type: none"> The NSW Government considered a number of investment options for the Sydney Football Stadium Redevelopment (as outlined in the Business Case Summary), and decided to proceed with the knockdown, rebuild option. Further discussion of the options considered is contained within the Environmental Impact Statement.
	<ul style="list-style-type: none"> Questions around how much the redevelopment will cost. 	<ul style="list-style-type: none"> The new stadium has a capital investment value of approximately \$729 million.
	<ul style="list-style-type: none"> Concern for the lack of ongoing maintenance by the SCG Trust and that this is why it is in a state of disrepair now. 	<ul style="list-style-type: none"> The Sydney Football Stadium is at the end of its economic life, with shortcomings in its ability to meet contemporary safety, security and amenity standards, its operational efficiency, and the experience it provides to people using the venue.

Topic	Feedback received	Project team response
		The stadium requires significant capital investment to remain operational.
	<ul style="list-style-type: none"> Clarification sought that life expectancy of new stadium will be much longer than the 1988 stadium. 	<ul style="list-style-type: none"> The design life for the new stadium will be an estimated 50 years.
	<ul style="list-style-type: none"> Suggestions that public funds could be better spent in other infrastructure projects around the states that would benefit more people. 	<ul style="list-style-type: none"> The Sydney Football Stadium Redevelopment is part of the NSW Government's Stadia Plan, which also includes the new Western Sydney Stadium in Parramatta and a refurbished Stadium Australia in Sydney Olympic Park. Infrastructure NSW is in the early stages of developing an EIS for the Stage 1 State Significant Development Application for the Sydney Football Stadium Redevelopment.
	<ul style="list-style-type: none"> Concern for the funding of the new stadium- should be spending public funds elsewhere. 	
	<ul style="list-style-type: none"> Questions about the justification for spending money on this project. 	
	<ul style="list-style-type: none"> Questions regarding potential for compensation to local businesses during the construction process. 	<ul style="list-style-type: none"> Impacts to local businesses will be assessed in the Stage 1 Concept Proposal EIS.
	<ul style="list-style-type: none"> Concern that the construction period will dampen economic activity in the local businesses. Preference for majority events to still occur at the SCG Stadium. 	<ul style="list-style-type: none"> The SCG Trust is currently scheduling an alternative sports program for when the Sydney Football Stadium is demolished. Most will be relocated to the SCG which will mitigate impacts on the local businesses.
Parking	<ul style="list-style-type: none"> Misconception that the Tibby Cotter Bridge was built for cars and that Moore Park West is going to be taken over for a car park 	<ul style="list-style-type: none"> The Tibby Cotter Bridge was built exclusively for pedestrian and bicycle use. Moore Park belongs to the Centennial and Moore Park Trust, so it is not for Infrastructure NSW to comment on how the Trust's land use land.
	<ul style="list-style-type: none"> Questions around the ongoing provisions of current parking facilities in and around the Sydney Football Stadium precinct due to the extended number of events anticipated in the future. 	<ul style="list-style-type: none"> There will be no additional parking provided on site for patrons at the Stadium. The Centennial and Moore Park Trust currently runs the car park on their land. The Moore Park Master Plan provides for a longer-term reduction in on-grass parking, subject to alternative parking and transport arrangements being implemented in consultation and collaborations with other bodies including TfNSW, RMS and the Trust. There are no changes anticipated to occur to the Entertainment Quarter parking facilities at this point.
	<ul style="list-style-type: none"> Assurance sought that there will be off-street parking provided for construction workers during the development of the new stadium. 	<ul style="list-style-type: none"> Construction workers will be strongly discouraged to drive to the site, and it is common place for them to take public transport to large projects such as this. Parking is available away from residential areas within the precinct, such as along Driver Avenue and within the Entertainment Quarter public car park and use of these will be encouraged where driving is required.
	<ul style="list-style-type: none"> Interest to know what steps will be taken to ensure construction workers (and patrons in the future) will be discouraged from parking in local residential streets. 	
	<ul style="list-style-type: none"> Preference to keep all parking off the Moore Park grassland in the future. 	<ul style="list-style-type: none"> Centennial and Moore Park Trust oversee the running of the park carpark during events. The SCG Trust will work with Centennial and Moore Park Trust in the future to coordinate parking. The management of a carpark on park lands is a matter for the Centennial and Moore Park Trust.
Parking and Public Domain	<ul style="list-style-type: none"> Belief that the SCG Trust is responsible for the degradation of Moore Park lands from the excessive use of it as a parking facility. 	<ul style="list-style-type: none"> The Centennial and Moore Park Trust runs the carpark on its land as an income stream and it is up to their own discretion to use it. Refer to previous comments regarding the Moore Park Master Plan.
Public Domain	<ul style="list-style-type: none"> Belief that Kippax Lake will be removed. 	<ul style="list-style-type: none"> The new stadium will not impact on Kippax Lake and will be built only on land owned by SCG Trust.

Topic	Feedback received	Project team response
	<ul style="list-style-type: none"> Suggestion to activate Moore Park with better sporting facilities as well as BBQ and picnic areas. 	<ul style="list-style-type: none"> Noted, however Moore Park is not on land belonging to the SCG Trust and therefore not for Infrastructure NSW to decide.
	<ul style="list-style-type: none"> Suggestion to give back some of the hard surfaces to Moore Park when the light rail is complete. 	<ul style="list-style-type: none"> The hard surfaces being referred to do not belong to SCG Trust and are therefore not for Infrastructure NSW to give back. This is a question for the Centennial and Moore Park Trust.
	<ul style="list-style-type: none"> Belief that all the trees on Moore Park Road are going to be removed. 	<ul style="list-style-type: none"> The trees along Moore Park Road are not on land belonging to the SCG Trust however there is a chance some will have to be removed during construction. Refer to Appendix F of the EIS for the Arboriculture Impact Assessment. There will be improved landscaping and green spaces incorporated into the final design. The large fig tree along Moore Park Road as well as many other trees within the site will be preserved.
	<ul style="list-style-type: none"> Assumption that the new Stadium will take land from Moore Park public domain. 	<ul style="list-style-type: none"> The new stadium will be constructed wholly on land belonging to the SCG Trust and will not encroach on the surrounding parklands.
	<ul style="list-style-type: none"> Preference to give the land on which the stadium stands to public land and move it to the Showground site. 	<ul style="list-style-type: none"> As Crown Land, this land does not belong to the SCG Trust and is therefore not a possibility for the project.
Patron Experience	<ul style="list-style-type: none"> Preference to see the new stadium resemble the Suncorp Stadium in Brisbane- i.e. rectangular purpose built. 	<ul style="list-style-type: none"> Noted, Infrastructure NSW can confirm that the new stadium is to be a Tier 1 stadium, of the highest standard and will be purpose built for the rectangular sporting codes.
	<ul style="list-style-type: none"> Opinion that the current patron experience at the existing stadium is very poor and should be improved. 	<ul style="list-style-type: none"> The new stadium is going to be a Tier 1 stadium according to the NSW Stadium Strategy, making the Sydney Football Stadium world-class. Patron experience will be a key focus of improvement in the new design.
Size	<ul style="list-style-type: none"> Questions around how much bigger the new stadium will be. 	<ul style="list-style-type: none"> The new stadium will be a similar capacity to the current one (around 45,000 people). The height will be taller than the tallest point of the current stadium and the footprint will also be larger in order to provide the modern facilities that are required of a Tier 1 stadium.
Safety	<ul style="list-style-type: none"> Suggestion that the new stadium should address the current safety and access issues seen in the existing stadium. 	<ul style="list-style-type: none"> Noted, the new stadium will have to follow strict building and safety codes to meet modern compliance standards. This is also one of the drivers for the redevelopment.
Capacity	<ul style="list-style-type: none"> Suggestion to make the new stadium smaller- 40,000 capacity. 	<ul style="list-style-type: none"> The final figure has not been designed yet, but Infrastructure NSW anticipates that the new stadium will be a similar size to the existing stadium- up to 45,000.
	<ul style="list-style-type: none"> Suggestion to make the new stadium bigger- 60,000 capacity. 	<ul style="list-style-type: none"> The final figure has not been designed yet, but Infrastructure NSW anticipates that the new stadium will be a similar size to the existing stadium- up to 45,000.
Sustainability	<ul style="list-style-type: none"> Reassurance sought that the new stadium will be sustainable and respect the existing design as well as the SCG. 	<ul style="list-style-type: none"> High sustainability standards are being targeted Gold Star LEED rating. Cox Architects (who designed the existing stadium) will be designing the concept brief and the final details will go to a design competition.
	<ul style="list-style-type: none"> Questions around what sustainability initiatives will be incorporated in the new stadium design. 	<ul style="list-style-type: none"> Infrastructure NSW is targeting a Gold Star LEED rating for the new stadium will have many different sustainability features included in the final design.

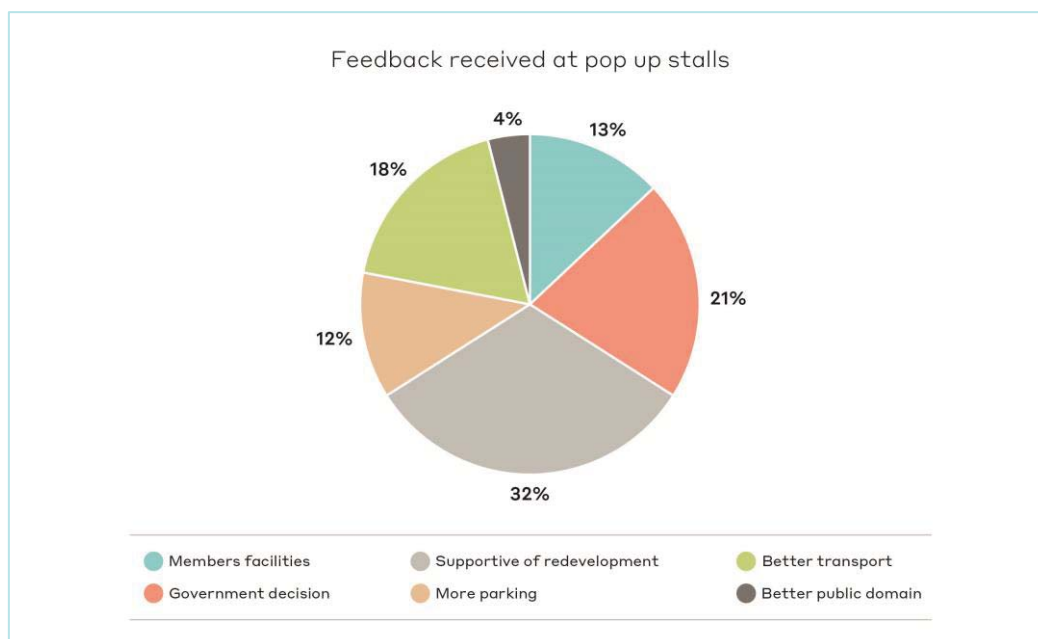
Topic	Feedback received	Project team response
Information Sessions	<ul style="list-style-type: none"> Suggestion that there should be a ban on plastics in the new sports precinct. 	<ul style="list-style-type: none"> Noted.
	<ul style="list-style-type: none"> Preference to hold the information session in other locations closer to residential communities in the future. 	<ul style="list-style-type: none"> Noted, Infrastructure NSW will explore other options for the future sessions.
	<ul style="list-style-type: none"> Lack of faith that due consideration will be given to the feedback provided at the information sessions to inform the investment decision and final design. 	<ul style="list-style-type: none"> The NSW Government decided to invest in their stadiums in November 2017. These information sessions provide a platform for the public to suggest feature they would like to see in the new design and what concerns they may have. All feedback is recorded and fed into the project team in a report at various stages of the planning process.
Views	<ul style="list-style-type: none"> Concerns around current views from residential houses being lost with new stadium height. 	<ul style="list-style-type: none"> The EIS considers the potential impacts of the Stage 1 Concept Proposal and maximum building envelope on views from residential areas.



Captains Bar, SFS – Members information session

8.2 Pop-up stalls

The information below provides a summary of all feedback received at the pop-up stalls at the Sydney Football Stadium and at Paddington Markets.

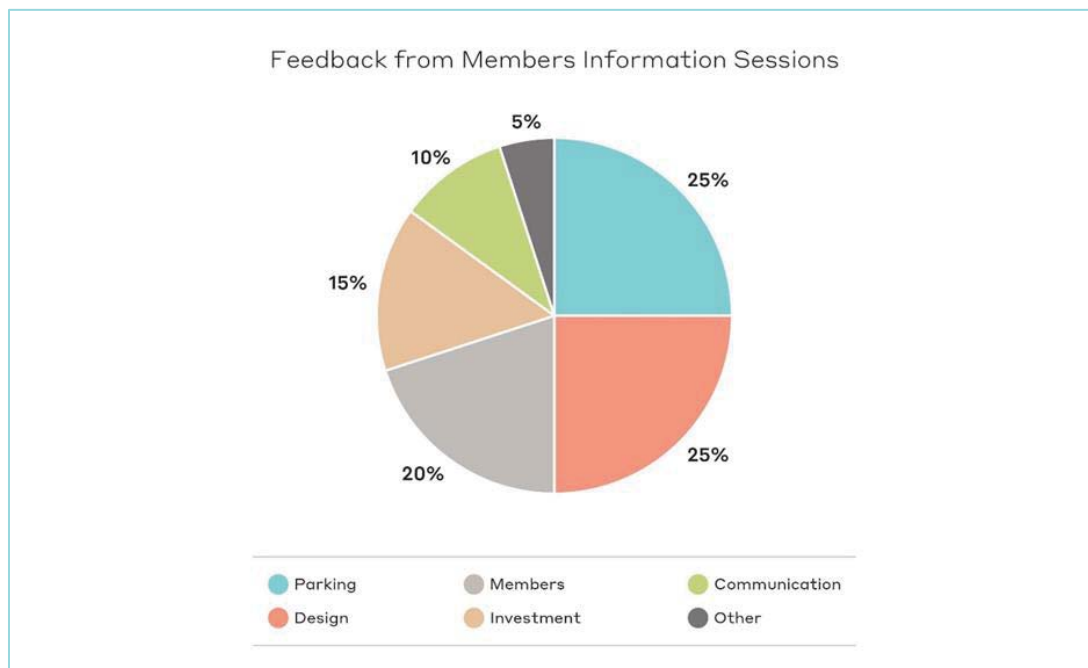


Theme	Issues
Traffic	Concern about an increase in traffic in local streets.
	Would like to know what the truck haulage routes will be during construction.
Design	Would like to see new/additional features such as escalators, disabled facilities, additional toilets.
	Questions about the shape of the new roof.
	Would like to know if the roof will be fully covered.
Parking	Would like to see more members parking.
	Questions about the future of Moore Park maintaining car parking abilities on game days.
	Would like to see better public transport options.
Members facilities	Would like to know where the interim members facilities will be.
	Would like to know where the sports clubs will play during construction.
	Would like to know members facilities will be provided long term.
Investment	Questions about the NSW Government investment decision, and what the facts were based upon.
	Questions about alternative options for redevelopment instead of demolition and rebuild.

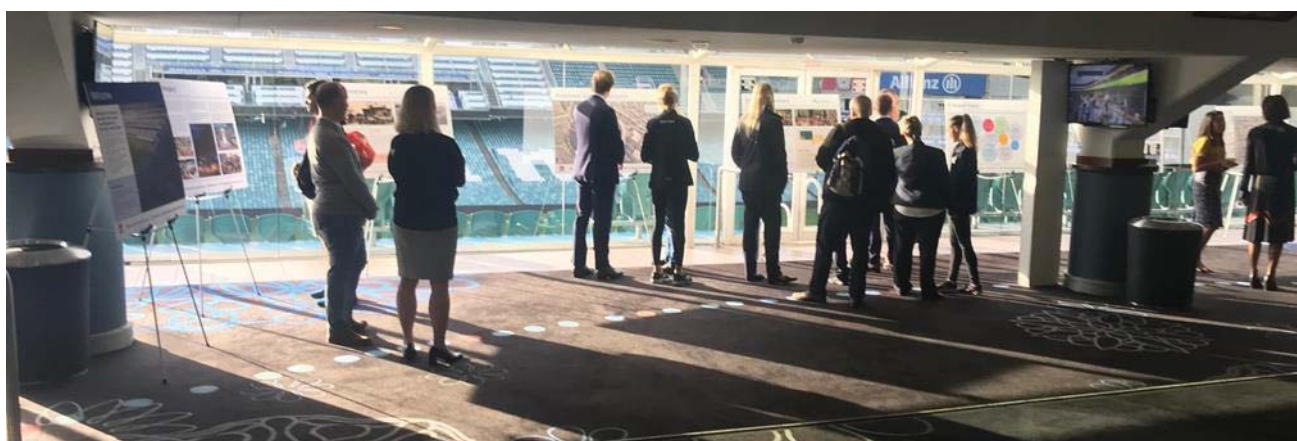
8.3 Members information sessions

The information below provides a summary of all feedback received at the members information sessions.

The graph represents a summary of feedback forms and conversations that were noted between members of the project team, representatives of the SCG Trust and SCG members.



Theme	Issues
Design	Would like to see new/additional features such as escalators, disabled facilities, additional toilets.
	Questions about the shape of the new roof.
	Would like to know if the roof will be fully covered.
Parking	Would like to see more members parking.
	Questions about the future of Moore Park maintaining car parking abilities on game days.
Members facilities	Would like to know where the interim members facilities will be.
	Would like to know where the sports clubs will play during construction.
	Would like to know members facilities will be provided long term.
Investment	Questions about the NSW Government investment decision, and what the facts were based upon.
	Questions about alternative options for redevelopment instead of demolition and rebuild.



Captain's Bar, SFS – community information session

8.4 Stakeholder briefings

This section provides a summary of all stakeholder briefings held during the preparation of the Stage 1 Concept Plan. The briefings were held at the beginning of the consultation process with the intention of providing an overview of the project and seeking input into the key issues to be considered. The project team committed to returning to all stakeholder groups during public exhibition and presenting the findings from the Environmental Impact Statement.

8.4.1 Centennial and Moore Park Trust

Meetings were held with Centennial and Moore Park Trust on 2 March and 8 May 2018. At the meetings the scope of the project and planning process was discussed. Information was exchanged, particularly in relation to the Moore Park master plan. It was agreed that there is a strong desire for both parties to work cooperatively to ensure integration of the project with the surrounding area. Discussions took place regarding the best way the project can interface with the principles of the Moore Park master plan and help to realise these principles in the future.

The Urban Design Guidelines contained at Appendix E of this SSDA outlines the way in which the project will interface with the Moore Park master plan, particularly in relation to strengthening of linkages between the two sites.

8.4.2 Centennial Park Residents Association

A briefing with representatives from the Centennial and Moore Park Trust was held on 24 April 2018. The conversation centred around the following themes:

- Future parking in the precinct, including construction parking and the consideration for additional permanent parking;
- Pedestrian access through Fox Studios and the Entertainment Quarter; and
- Concern about traffic in the local streets and how this project will increase traffic issues.
- The Transport Impact Assessment at Appendix K outlines the rationale for parking within the precinct. No new parking will be created in the precinct as a result of this project and the Stage 2 SSDA will include a travel access guide and green travel plan to encourage a mode shift towards public and active transport. Car parking on Moore Park is under the control and management of the Centennial and Moore Park Trust and it is understood that the Moore Park master plan envisages removal of this parking in the medium to long term and replacement with satellite parking.
- The Urban Design Guidelines at Appendix E outline the key moves in terms of pedestrian permeability of the site. Creating permeability will be achieved through removal of the existing fence on Moore Park Road. Future linkages to the east of the site will be supported through the movement of the stadium to the west.

8.4.3 Saving Moore Park

The project team met with representatives from Saving Moore Park on 24 April 2018. The majority of issues raised by the group were about ensuring the future preservation of all Moore Park land. The project team explained that no additional land from Moore Park would be used for this redevelopment. There was some concern about the existing parking on Moore Park and a preference to have that permanently removed.

There were additional suggestions by the group to improve the wayfinding in the area, as well as integrating light rail, cycleways and pedestrian access into the new stadium.

The Saving Moore Park group would like to see development contributions from this project spent on upgrading Moore Park.

8.4.4 Alex Greenwich MP, Member for Sydney

A presentation was provided by the project team to Alex Greenwich and staff about the project and the planning process and timeframes. Alex Greenwich MP was pleased that Infrastructure NSW chose to undertake the SSDA process under the EP&A Act 1979, rather than using the SCGT Act.

Questions were raised about the probability of Driver Avenue closing in the future, and the potential impacts to neighbours (including residential and commercial) during construction and operation of the new stadium. It was confirmed that the project does not include Driver Avenue and will not change the current arrangement of Driver Avenue in both the short and long term. A conversation about project approvals and timeframes occurred, with the project team explaining it hopes to have approval by the end of the year and a demolition program of about 12 months.

8.4.5 Fox Studios

A meeting was held with representatives from Fox Studios on 9 May 2018. Fox Studios expressed concern about the noise and reverberation impacts during demolition of the existing stadium and construction of the new stadium. It was explained that Fox Studios is a busy and working film set studio, with international filming occurring all year round. The project team offered to hold another meeting on site with the team's noise and vibration specialist who would be able to provide detailed information and analysis about the noise and vibration impacts during construction. Parties agreed to work together regarding operation of the film studios during demolition works.

8.4.6 Sydney Business Chamber

A meeting with Patricia Forsythe, Executive Director of the Sydney Business Chamber on Thursday 10 May at Infrastructure NSW's office. The presentation was based around the NSW Government's Stadia strategy, not only the Sydney Football Stadium redevelopment. There was broad support for the Stadia strategy, with a particular interest in construction timeframes of all three stadia (Western Sydney, Sydney Football Stadium and Stadium Australia).

Ms Forsythe expressed the desire to see the Moore Park stadium area become a 'sports hub' and precinct with world class facilities. She was also eager to obtain more information about job generation and contract values for the members of the Sydney Business Chamber.

It was suggested that Destination NSW should oversee the opening ceremonies/exhibition games for all new stadia.

8.4.7 Paddington-Darlinghurst Community Working Group and Paddington Heritage Society

A briefing with the Paddington-Darlinghurst Community Working Group and Paddington Heritage Society was held on Thursday 10 May at the Rugby AU headquarters. The group's main concern was about parking in surrounding local streets and how the project team could improve the problem.

Additional comments included:

- Questions about how the existing stadium could be better integrated with surrounding roads, public transport and public domain without having to demolish and rebuild;
- Questions about the staged planning process and the design competition;
- The representatives were interested to see elevations and more detailed designs, as well as the proposed footprint;
- Clarification about consultation with other agencies and representatives;
- Concern about construction impacts and the noise the concrete crusher will create; and
- Assurance that Kippax Lake will be preserved.

8.4.8 Local Government NSW

The project team met with Linda Scott and Donna Rygate, representatives of Local Government NSW on Wednesday 16 May 2018. Clarification was sought about the staged planning process and how they worked concurrently. There was a misconception by LGNSW that Infrastructure NSW was exempt from paying the Section 94 Developers Contribution. Infrastructure NSW explained that the City of Sydney Development Contribution Plan applies to this development.

LGNSW suggested that the project team should be meeting with all surrounding local councils. It was explained that the team had met with City of Sydney numerous times, and reached out to Randwick, Waverley and Woollahra councils.

LGNSW requested that the exhibition period is extended beyond 42 days and that the general sentiment from LGNSW is that the government should be spending this money elsewhere.



SFS Forecourt, Driver Avenue – Sydney FC pop up stall

8.5 Agency meetings

This section provides a summary of all agency meetings held during the preparation of the Stage 1 Concept Plan.

8.5.1 Transport for NSW, Roads and Maritime Services and Sydney Coordination Office

Two meetings were held with representatives of Transport for NSW, Roads and Maritime Services and Sydney Coordination Office on 28 February and 24 April 2018. The project team provided an overview of the scope of the project at the meetings and discussed the staged planning process for the project. Discussions centred on patron and visitor access and the desire to develop a modal shift to public and active transport for trips to the stadium. The Light Rail project was discussed in terms of capacity and operational integration with the Stadium. It was agreed that consultation would be ongoing during all phases of the development to ensure impacts were managed and mitigated in a timely manner.

The EIS responds to feedback received by TfNSW, RMS and Sydney Coordination office in the key areas of:

- Construction vehicle management- commitment to staging of construction vehicles within the site, and preventing vehicles queueing on public roads during the demolition phase.
- Incorporation of latest plans for Light Rail in relation to access to the Moore Park stop and increasing pedestrian access to Central station via Devonshire Street.
- Opportunities to improve modal splits towards public and active transport through the development of a travel access guide and green travel plan during the Stage 2 SSDA.

8.5.2 Sydney Water

A briefing was held with Sydney Water on 8 March 2018 to provide an overview of the project and seek input into key issues to be considered. Sydney Water expressed a desire to be kept informed on any developments regarding locating Busby's Bore. The project team undertook to continually update Sydney Water on developments in locating Busby's Bore during the relevant works. The Heritage Impact Statement at Appendix L of this SSDA provides updated desk top information regarding the location of Busby's Bore that will need to be further verified with physical excavations during the development of the Stage 2 SSDA.

Sydney Water also provided information regarding desires for the sizing of assets to be included in the redevelopment and the management of stormwater. This feedback has been incorporated into the Infrastructure Management Plan at Appendix U and the Stormwater and Flooding Report at Appendix S.

8.5.3 Government Architect NSW

Discussions were held with representatives of Government Architect NSW on 13 March 2018 and 1 May 2018. These discussions centred on the Design Excellence Strategy for the project and the manner in which the project will meet design excellence requirements of both the Sydney LEP and *Better Placed*. The Design Excellence Strategy at Appendix F responds to feedback received from Government Architect NSW and has been developed to their satisfaction.

8.5.4 Office of Environment and Heritage

The Office of Environment and Heritage was consulted as part of the Aboriginal Community Consultation Process, in accordance with OEH statutory guideline document 'Aboriginal cultural heritage consultation requirements for proponents 2010'. As part of this process, a letter was sent to the OEH (20.4.18) requesting names of Aboriginal people who may hold cultural knowledge relevant to determining the significance of Aboriginal objects and/or places with relation to the site (Stage 1 of the OEH Consultation Guidelines), to assist in the identification of Registered Aboriginal Parties for ongoing consultation for the project. Further consultation with OEH will be ongoing during preparation of an Aboriginal Cultural Heritage Assessment Report that will be submitted with the Stage 2 SSDA.

8.5.5 Environmental Protection Authority

The EPA declined a meeting with the project team prior to the lodgement of the Stage 1 SSDA.

8.5.6 Sydney Airport Corporation and Civil Aviation Safety Authority.

The SAC and CASA has no objection to the proposed development should it not exceed the maximum height of 85.0 AHD. If the height is exceeded in Stage 2, then a new application must be submitted to SAC and CASA at the appropriate time. A copy of the letter from CASA can be found in **Appendix G** of this report.

8.5.7 Department of Industry

An email was sent to the Department of Industry to confirm the project would not impact on the water table as outlined in the Groundwater Assessment contained at Appendix T.

8.5.8 City of Sydney Council

The following meetings were held with representatives of the City of Sydney Council:

Lord Mayor

A presentation was provided by the project team regarding the scope and timeframes for the project was held on 9 May 2018. The Lord Mayor provided the following feedback:

- Questioned the project need and the ability for the stadium to meet international standards;
- Crowd attendance numbers at the existing stadium and the need to build a 45,000-seat stadium;
- Questioned the impact on Driver Avenue;
- The use of Moore Park for vehicle parking associated with the stadium should cease;

- The requirement for parking to be adequately assessed in the SSDA;
- Lack of parking as part of the development will lead visitors to park in local streets; and
- That active and public transport access to and from the stadium should be encouraged.

Councillors Chung, Phelps and Vithoulkas

A presentation was provided by the project team regarding the scope and timeframes for the project on 11 May 2018. The Councillors provided the following feedback:

- Questioned the business case and investment decision to redevelop Sydney Football Stadium;
- Questioned the issues regarding non-compliance of the existing stadium (accessibility, adequate facilities);
- Clarification of the planning process;
- Suggested better communications to reduce reliance on private vehicle travel to the stadium;
- Sought clarification around timing of works;
- Questioned the use of Moore Park for vehicle parking; and
- Highlighted concern of residents regarding street parking, particularly for construction traffic.

City of Sydney Staff

A presentation was provided by the project team regarding the scope and timeframes for the project on 18 May 2018. The staff provided the following feedback:

- Questioned parking facilities within the proposed stadium;
- Questioned the impact on Driver Avenue;
- Questioned how pedestrian access will be dealt with;
- Desire for improved public access around the stadium; and
- Requested ongoing discussions during the design development and planning stages.

Response:

The EIS contains discussion regarding the scope of the project at section 1. The summary Business Case has been published on the Infrastructure NSW website and outlines the reasoning for the investment decision on the project.

The Transport Impact Assessment at Appendix K provides the rationale in regard to parking and access to the proposed stadium. As outlined in this report, parking within the Moore Park lands is under the management and control of the Centennial and Moore Park Trust. Under the Moore Park Master Plan 2040, parking is envisaged to be gradually removed and replaced with satellite parking arrangements. Should this occur the project would be serviced by such satellite parking areas.

The project does not include Driver Avenue and will therefore not be making any suggestions to changes to the current or future use.

The project does not propose to increase parking numbers within the precinct and will instead seek to create a greater mode share towards active and public transport. This will be achieved through development of a travel access guide and green travel plan to be detailed in the Stage 2 SSDA. Parking on local streets is limited for events by the time limits that apply to the majority of the surrounding local streets. Feedback obtained from local residents by the project team during the consultation was that enforcement of parking restrictions was inadequate.

Construction parking arrangements are detailed in the Construction Management Plan at Appendix G and the Transport Impact Assessment at Appendix K. The demolition workforce is expected to be relatively small (30 workers) and these workers will be encouraged to utilise sustainable means of travel to the site. Where that is not feasible, workers will be directed to parking within Driver Avenue and the Entertainment Quarter where there is adequate capacity to service this need.

As outlined in the Transport Impact Assessment Infrastructure NSW will continue to work with Roads and Maritime Services, Transport for NSW, the Sydney Coordination Office and City of Sydney in developing these documents.

8.6 Aboriginal consultation

Aboriginal community consultation was initiated in accordance with the NSW Office of Environment and Heritage in April 2018. Letters were sent to relevant statutory bodies (NSW Office of Environment and Heritage, La Perouse Local Aboriginal Land Council, the Registrar *Aboriginal Land Rights Act 1987*, the National Native Title Tribunal, Native Title Services Corporation Limited, City of Sydney Council and the Greater Sydney Local Land Services), requesting names of Aboriginal people who may have an interest in the proposed project area and hold knowledge relevant to determining the cultural significance of Aboriginal objects and places relevant to the Sydney Football Stadium Redevelopment site.

A public notice advertising the Redevelopment was placed in the Wentworth Courier on Wednesday April 11, advising of the project location and proposed development, and inviting registration from Local Aboriginal people.

Following this expression of interest process, 12 Registered Aboriginal Parties (RAPs) have registered their interest in the project. Details of each RAP can be found in the Heritage Impact Statement.

Following RAP approval of the cultural heritage assessment methodology, an Aboriginal Cultural Heritage Assessment Report and Aboriginal Archaeological Technical Report will be prepared for the project area, which will incorporate all RAP comments, feedback and discussions of cultural value provided. The Aboriginal Cultural Heritage Assessment Report will document the process of the investigations, consultation and cultural heritage assessment relating to the project site, including assessment of any impacts on Aboriginal cultural heritage values posed by the proposed redevelopment of the Sydney Football Stadium and will demonstrate attempts to avoid impact upon cultural heritage values and identify any conservation outcomes.

8.7 NSW Government stadia engagement

As part of the NSW Government's broad stadia engagement, the following organisations have received briefings:

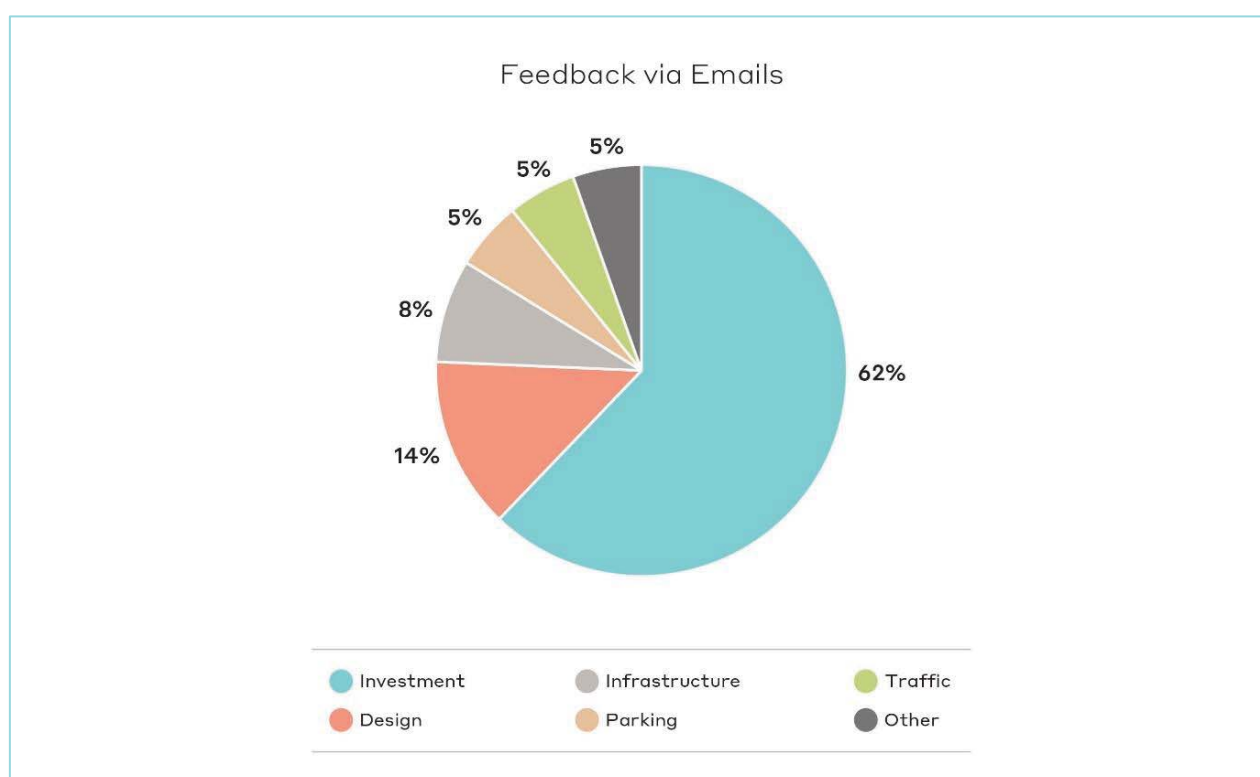
- National Rugby League;
- Football Federation Australia;
- Rugby Australia;
- Committee for Sydney;
- Royal Agricultural Society;
- Manly Warringah Sea Eagles;
- Canterbury Bulldogs;
- South Sydney Rabbitohs;
- Destination NSW;
- Parramatta Eels;
- Penrith Panthers;
- Australian Football League; and
- Tourism and Transport Forum
- Western Sydney Business Chamber
- Western Sydney Leadership Dialogue;
- Western Sydney Wanderers; and
- GWS Giants.

Feedback from the briefings included:

- Generally positive sentiment across all organisations;
- Most stakeholders were appreciative of the opportunity to meet with Government about the stadia strategy and keen for continued involvement and advocacy;
- Desire for further detail around timings and design;
- High interest from codes and clubs regarding shrouding and screens at Sydney Football Stadium and Stadium Australia – key to maintaining atmosphere for smaller crowds; and
- Positivity in relation to pedestrian and light rail connections at Sydney Football Stadium.

8.8 Email enquiries

The graph below represents a summary of the 61 emails sent to the sdsredevelopment@infrastructure.nsw.gov.au project specific email address between April 11 2018 and 24 May 2018.



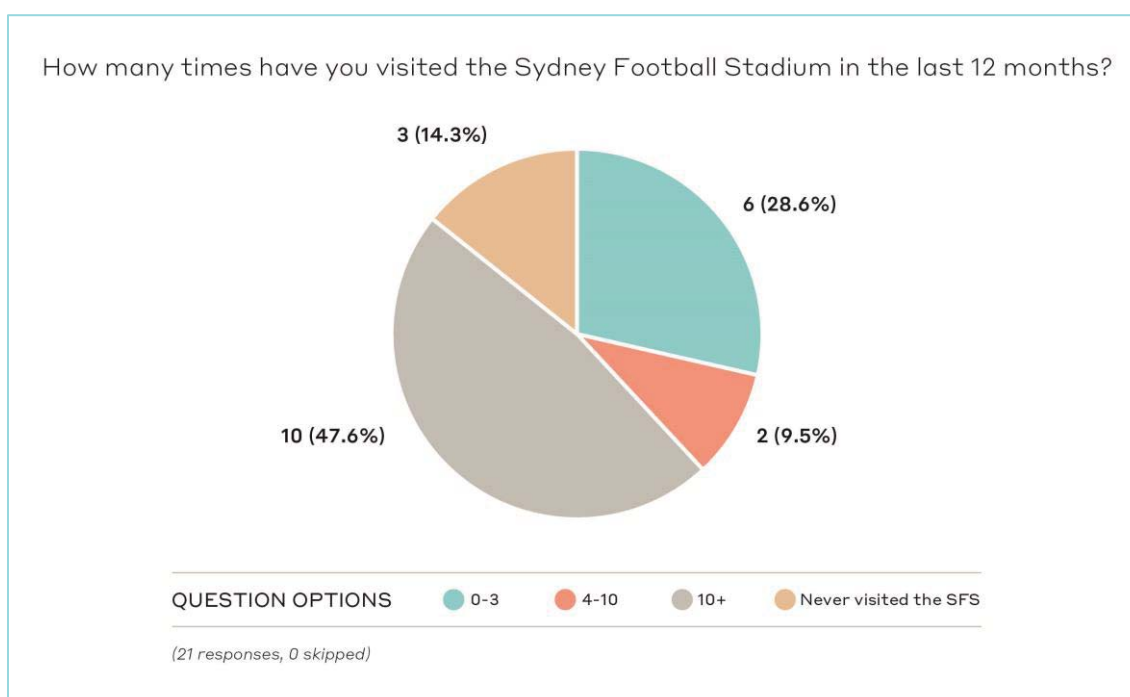
Theme	Issues
Investment	Questions about the NSW Government decision to spend money redeveloping the stadium.
	Questions about alternative options such as refurbishing the stadium.
	Comments about funding being spent elsewhere, such as schools and hospitals.
Design	Suggestions for improving the public domain and landscaping.
	Fear that all trees and open space (Moore Park) will be lost.
	Suggestions for ensuring the new stadium has a retractable roof.

Theme	Issues
	Details around architect and design process.
Parking	Provision of more patron parking.
	Future use of Moore Park as a car park.
	Local resident issues around on-street parking.
Infrastructure	Would like to know how public transport will be integrated into the project in the future.
	Pleased to see Tibby Cotter Bridge will become more utilised once light rail is complete.
Consultation	Lack of community engagement opportunities.
Traffic	Concern about increase in traffic in the area.

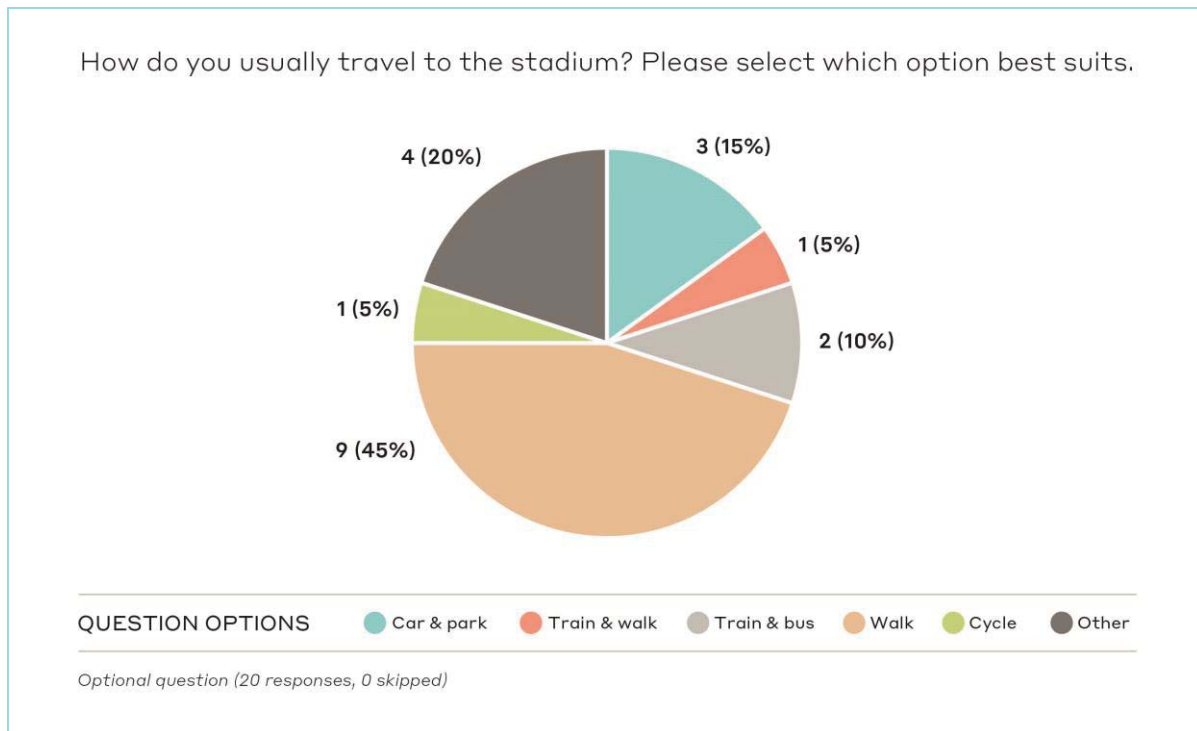
8.9 Have Your Say website data

The Have Your Say website was established to support the project, provide the public with more detailed information and seek feedback.

Visitors to the Have Your Say website were prompted to answer a number of questions about their travel and visitor patterns to the Sydney Football Stadium. The graph below presents the results from the 21 responses received.

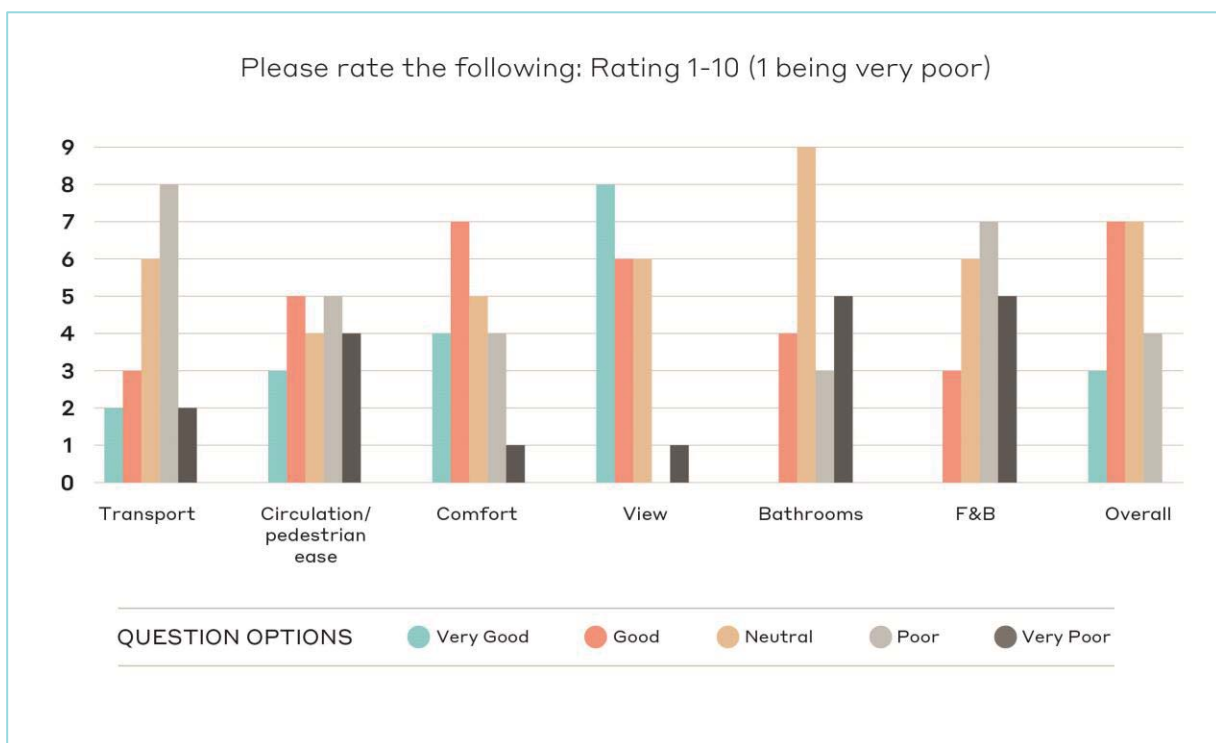


Additionally, visitors were also asked how they would usually travel to the Sydney Football Stadium. The graph below represents 20 responses.



Website visitors were also asked to rank their thoughts about visitor experience at the Sydney Football Stadium.

The graph below represents the visitor experience question results.



The website also asked visitors to use an interactive map of the Sydney Football Stadium and surrounds to present ideas for the redeveloped stadium.

 TRANSPORT	 PARKING	 FOOD AND BEVERAGE	 PUBLIC DOMAIN
Add bike crossing lantern and allow scramble crossing so bikes can safely access Lang Road/Driver Avenue intersection.	Parking should not be allowed on green grassed areas.	Food and beverage is well catered for in the adjoining Entertainment Quarter. Caterers at the Sydney Football Stadium should change.	Open space around the stadium.
Close Driver Avenue to cars (and rename).	Stop car parking on Moore Park.	Minimise alcohol – locals living around here have to deal with many extremely drunk people leaving at the end of games, dealing with abusive behaviour, (mostly) men pissing in public and makes the area feel very unsafe.	Preference to see more open space around the stadium, beer gardens and open air eating areas.
Improve cycling access by completing surrounding network.	Improve public transport so there are fewer cars in the precinct.	Provide seats with drink holders.	The area is not very public domain amenable – it is very closed off, there is not enough open/green space. Leave the stadium as it is. To demolish and rebuild is a waste of money.
Stop making it so easy for stadium visitors to drive to the venue by providing parking. Sell stadium and tram tickets only. On car parking should be made available.	Minimise parking at the Stadium. The more parking provided the more cars will come. More and more traffic issues.		Improve Moore Park to be full time public domain, not a part time car park. Tibby Cotter Bridge is an example of bad planning as it doesn't match up with the path people walk to the stadium from Central.
It would be great if the new metro came via SCG/SFS on its way to Waterloo. Quick egress and access to light rail.	No stadium parking.		Provide better wayfinding and signage.
Integrate the new light rail network to have a loop combining it with the current Moore Park bus station. It could allow trams to queue without impacting the line.	Just sell stadium and tram tickets only.		
Current special buses are not user friendly when a game is on and you have to walk an extra few hundred metres. Make the special event buses stop in front of the ground that the game is being played in.	SCGT should be responsible for providing parking on its own land. Build a multi storey car park on current MP1.		
Light rail stop needs to be at the SFS and SCG. The current stop will not encourage people to use it to get to the games. Add an additional stop or create a stop and divert light rail on game days.	Consideration should be given to provide two levels of underground parking and make the members parking into malls with bars and eateries.		
	Put the current parking underground and provide more green land.		

9.0 Consultation during formal public exhibition

The Stage 1 Concept Plan will be placed on exhibition for 42 days, from mid-June until the end of July 2018. Infrastructure NSW will support the Department of Planning and Environment's exhibition by carrying out the following activities, with an aim to provide an update on the Stage 1 Concept DA, promote the exhibition period and inform stakeholders on how they can make a submission:

- Letterbox drops to the same distribution range;
- Email to the distribution list;
- Letters to key stakeholders;
- Door knocking along Moore Park Road and surrounding streets;
- Updates to both Infrastructure NSW and Have Your Say websites; and
- An updated consultation outcomes report highlighting stakeholder and community feedback received during the exhibition period.



SFS Forecourt, Driver Avenue – Sydney FC pop up stall

10.0 Conclusion and next steps

This consultation outcomes report provides a detailed account of the community consultation and stakeholder engagement activities undertaken prior to lodgement of the Stage 1 Concept Plan for the Sydney Football Stadium Redevelopment.

In accordance with the specifications of the SEARs and industry best practice, Ethos Urban has developed and implemented an engagement process that exceeds all minimum requirements in notifying and informing all relevant stakeholders, providing an accessible opportunity to ask questions about the project and incorporating feedback provided into the Stage 1 application. The consultation program reached a wide range of landowners, businesses, residents, stakeholders and community members. This outreach included 23,000 postcards delivered, 83 stakeholder letters sent, 12 stakeholder meetings held, eight agency meetings held, four advertisements placed, two websites established, 61 emails received and nine phone calls.

A broad cross section of communities and stakeholders across Sydney have been given an opportunity to participate in the conversation about the environmental impacts and provide important feedback. These opportunities will continue throughout the duration of the project.

The program has provided opportunities for the entire community and stakeholders have a clear understanding of the project and have been provided with ample opportunity to meet the project team including technical experts, offer feedback and elect to keep informed as the project continues.

Infrastructure NSW will continue to work with all stakeholders during the formal public exhibition and the Stage 2 Detailed Design of the Sydney Football Stadium.

Postcard



Sydney Football Stadium Redevelopment

Artist Impression Only

The NSW Government is investing in its major stadia network to ensure NSW is home to world-class sporting and entertainment precincts, and that Sydney remains a top competitor against major national and international cities for important global events and entertainment.

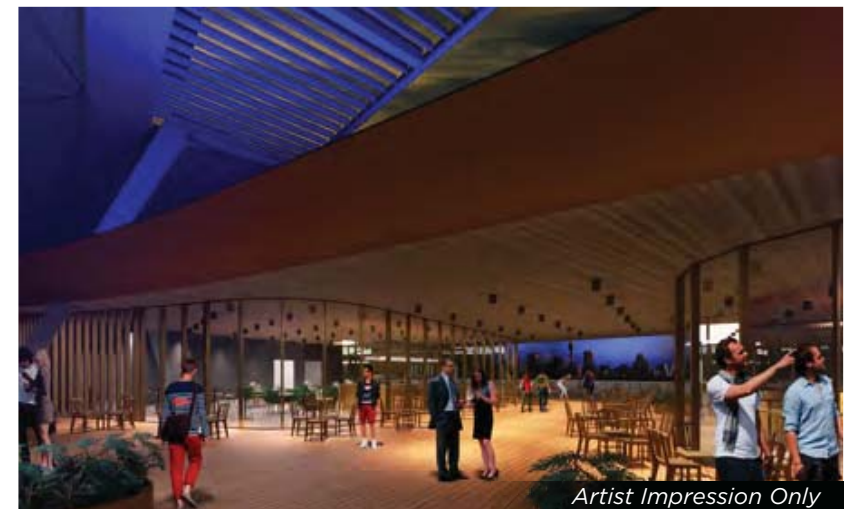
This is a once in a generation opportunity to ensure NSW is home to the very best sporting and cultural events, boosting our vital tourism industry which is worth \$33.2 billion per year to the NSW economy and supports 164,000 jobs.

The current Sydney Football Stadium is 30 years old, no longer meets basic modern safety and security standards and without significant investment would close.

Rebuilding the stadium will enhance a vibrant cultural and sporting hub, and a venue that redefines the spectator experience - up to 45,000 seats with complete weather protection, state-of-the-art technology, and modern food and beverage offerings.

Infrastructure NSW is in the early stages of developing an Environmental Impact Statement (EIS) for the Stage 1 State Significant Development Application, which will seek approval for the revised stadium footprint and surrounding retail and functional uses.

Community feedback and input is vital to the overall success of the project. We would like to hear your views on what opportunities you see for a redeveloped stadium and an enhanced sporting precinct.



Community information sessions

These drop-in sessions offer an opportunity for the community to ask questions of the project team and our technical experts, learn more about the planning process and provide important feedback.

Where

Captains Bar
Level 2, Sydney Football Stadium
Driver Avenue, Moore Park

When

- **Thursday 3 May 2018, 5pm – 8pm**
- **Tuesday 8 May 2018, 5pm – 8pm**
- **Saturday 12 May 2018, 10am – 1pm**

For information on how to get to the Stadium, please visit transportnsw.info. Note: no onsite parking will be provided for these events.

To speak to a member of our project team:



yoursay.sfsredevelopment.insw.com



1800 931 109

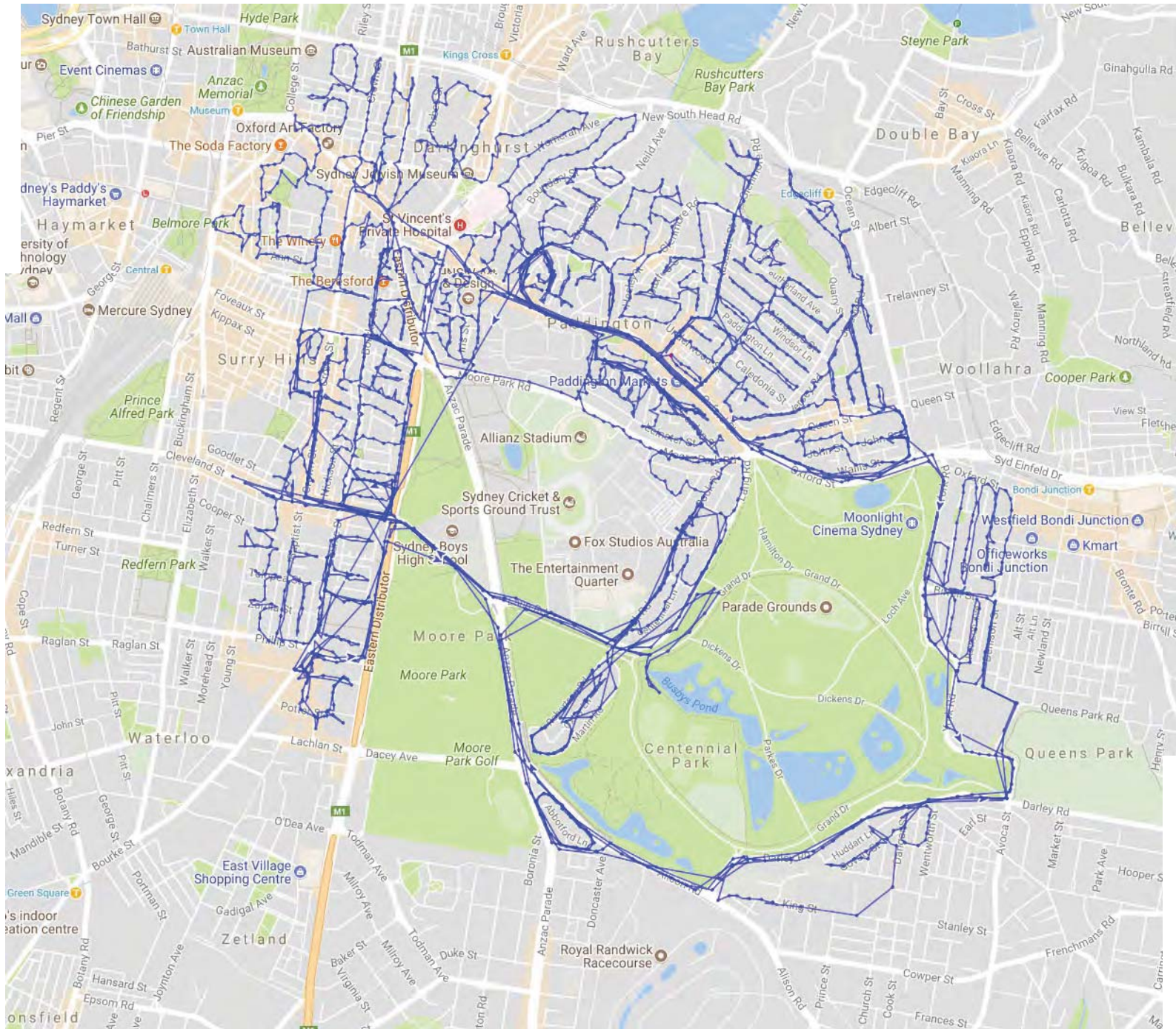


sfsredevelopment@infrastructure.nsw.gov.au



Distribution range

Trakpro Map – Job No. 6490 – EASTERN SUBURBS



Advertisement



Infrastructure NSW

Sydney Football Stadium Redevelopment

The NSW Government is investing in its major stadia network to ensure NSW is home to world-class sporting and entertainment precincts, and that Sydney remains a top competitor against major national and international cities for important global events and entertainment.

This is a once in a generation opportunity to ensure NSW is home to the very best sporting and cultural events, boosting our vital tourism industry which is worth \$33.2 billion per year to the NSW economy and supports 164,000 jobs.

The current Sydney Football Stadium is 30 years old, no longer meets basic modern safety and security standards and without significant investment would close.

Rebuilding the stadium will enhance a vibrant cultural and sporting hub, and a venue that redefines the spectator experience - up to 45,000 seats with complete weather protection, state-of-the-art technology, and modern food and beverage offerings.

Infrastructure NSW is in the early stages of developing an Environmental Impact Statement (EIS) for the Stage 1 State Significant Development Application, which will seek approval for the revised stadium footprint and surrounding retail and functional uses.

Community feedback and input is vital to the overall success of the project. We would like to hear your views on what opportunities you see for a redeveloped stadium and an enhanced sporting precinct.

Community information sessions

These drop-in sessions offer an opportunity for the community to ask questions of the project team and our technical experts, learn more about the planning process and provide important feedback.

Where: Captains Bar, Level 2, Sydney Football Stadium, Driver Avenue, Moore Park

When:

- Thursday 3 May 2018, 5pm - 8pm
- Tuesday 8 May 2018, 5pm - 8pm
- Saturday 12 May 2018, 10am - 1pm

For information on how to get to the Stadium, please visit transportnsw.info.

Note: no onsite parking will be provided for these events.

To speak to a member of our project team: nsw.com/sfs
1800 931 109 or sfsredevelopment@infrastructure.nsw.gov.au

Stakeholder letter

Dear xxx,

PO Box R220
Royal Exchange NSW 1225
P+612 8016 0100
Email@insw.com
www.insw.com
ABN 85 031 302 516

RE: Sydney Football Stadium Redevelopment

The NSW Government is investing in its major stadia network to ensure NSW is home to world-class sport and entertainment precincts – the new Western Sydney Stadium in Parramatta, the new Sydney Football Stadium in Moore Park and a redeveloped Stadium Australia in Sydney Olympic Park.

This investment will ensure NSW offers an improved spectator experience and Sydney will remain competitive against major national and international cities, to attract major events such as the FIFA Women's World Cup 2025, the Commonwealth Games 2026, the Rugby World Cup 2027 and global concert performances.

The current Sydney Football Stadium is 30 years old and no longer meets basic modern safety and security standards and without significant investment would likely close. In March this year, the NSW Government confirmed their commitment to redeveloping the stadium, and released a summary of the Final Business Case. The summary is available at insw.com/expert-advice.

Infrastructure NSW has been tasked with overseeing the planning for the new Sydney Football Stadium and will be preparing a State Significant Development Application (SSDA) under the *Environmental Planning and Assessment Act 1979*. A request for Secretary's Environmental Assessment Requirements has recently been lodged with the NSW Department of Planning and Environment. This is the first step in the SSDA planning process for the stadium redevelopment.

Infrastructure NSW will be undertaking extensive community engagement during development of the SSDA to provide ample opportunities for key stakeholders, affected residents and the wider community to have their say about key aspects of the proposed redevelopment.

As a key stakeholder, Infrastructure NSW will work closely with your organisation during the development of the SSDA to understand any concerns you may have on the redevelopment or opportunities you wish to see realised through a redeveloped stadium.

If you would like to arrange a meeting with the project team please contact 1800 931 109 or sfsredevelopment@infrastructure.nsw.gov.au.

Yours sincerely,



David Riches
Head of Projects NSW

List of stakeholder organisations:

- Federal Members
- State Members
- Local Government Members
- Local Government Councillors
- Randwick Council
- Waverley Council
- Woollahra Council
- Victoria Barracks, Australian Army and Forces Command
- Sydney Business Chamber
- Australian Turf Club- Randwick
- COFA (UNSW)
- Sydney Boys High School
- Sydney Girls High School
- Fox Studios
- Moore Park road businesses and outlets
- Kira Child Care Centre
- Moore Park road businesses and outlets
- Centennial Park Residents Association
- Saving Moore Park Inc
- The Paddington Society (heritage)
- Paddington & Darlinghurst Community Working Group
- Centennial Park Community Consultative Committee
- CityRAGS
- BIKESydney
- Centennial and Moore Park Trust

PO Box R220
Royal Exchange NSW 1225
P+612 8016 0100
Email@insw.com
www.insw.com
ABN 85 031 302 516