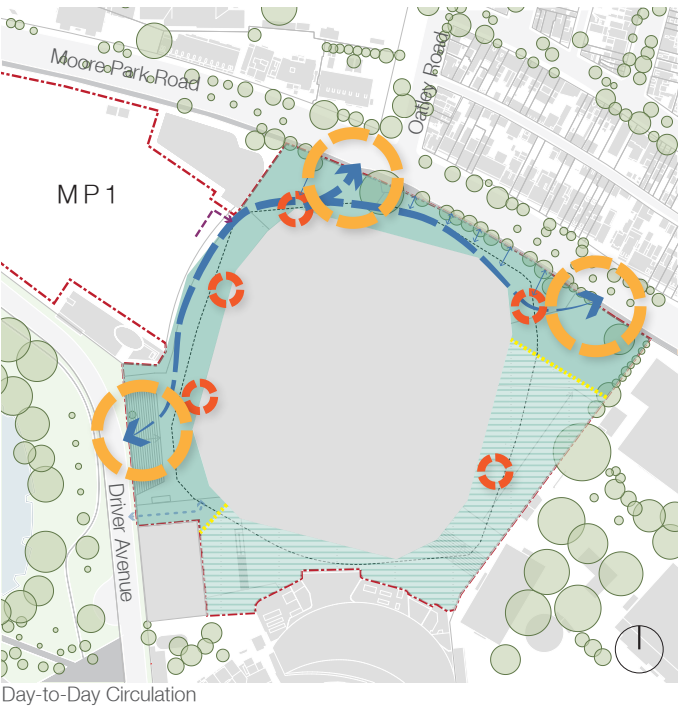


Guidelines

Access and Movement



Circulation within the Site

The development of the SFS provides a significant opportunity to provide high quality open space to the public and increase the permeability of the site both day-to-day and on event days. The design of the public domain will be flexible to deal with a range of security and event requirements. There are four main circulation configurations that respond to the use of the SFS and SCG.

Day-to-Day

Public access will be available through the northern and western portions of the site connecting Paddington through to Moore Park. Day-to-day access to the southern and eastern portions of the site will come online with the future provision of a connection through to Fox Studios and the EQ.

SFS Events

During SFS events, 360 degree access around the stadium will be provided for both ticket holders and the general public. Ticketing and security checks will occur within the stadium envelope allowing the stadium to provide neighbourhood connections on event days.

SCG Events or SFS/SCG Double Headers

During SCG events or SFS/SCG double headers, the southern portion of the site opposite the SCG Bradman Noble Stand will not be accessible to the general public. The western, northern and eastern portions of the site will be accessible.

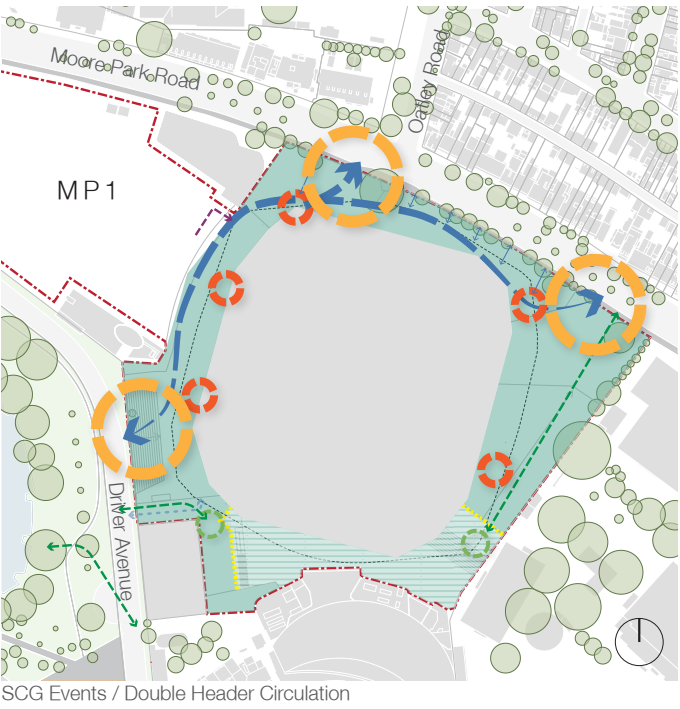
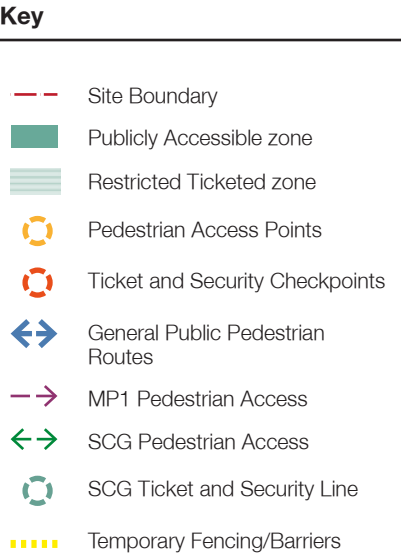
Major international Events

During select special events, the entire site may become a ticketed area with ticket and security checks located at key entrances to the site off Driver Avenue and Moore Park Road. This may occur due to the large number of patrons, the need to locate event specific uses on the external concourse or increased security requirements..

Principles

Create an inviting space that stitches into its surrounding context, utilising pedestrian movement paths to enhance the event day experience and support the day-to-day use of the precinct

- Guidelines**
- Provide equitable and legible circulation throughout the site supported by integrated wayfinding, materiality and establishment of viewlines across the site
 - Establish an external concourse that extends around the SFS footprint to allow for ease of access into the stadium and provide complimentary outdoor spaces for outward facing activation
 - Design access and egress in accordance with all relevant quality standards, including the Green Guide
 - Support a seamless transition of pedestrians from surrounding suburbs into the SFS through the design of the public domain, landscape and wayfinding.
 - Ensure emergency egress is facilitated for the SCG Bradman Noble Stand to Moore Park Road/Driver Avenue
 - Reflect CPTED principles throughout the public domain

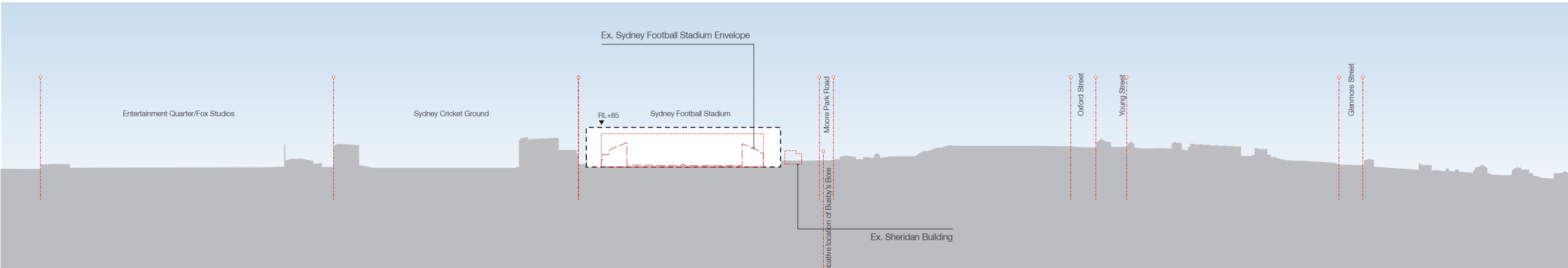
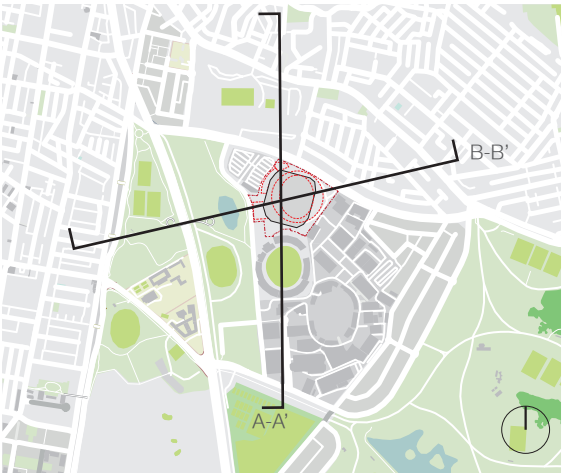


Guidelines

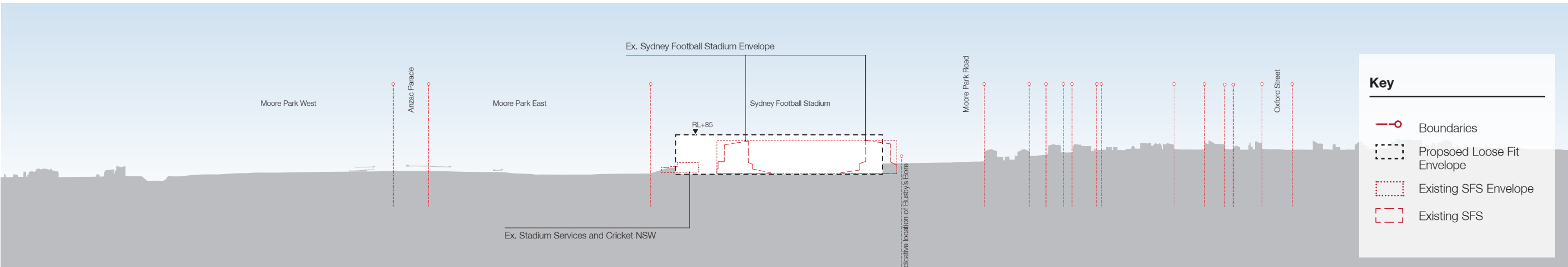
8.3 Building Height and Massing

Principle
Accommodate the functional requirements of a Tier 1 stadium within the loose fit envelope, located and oriented on-site to allow for external circulation and public domain spaces.

- Guidelines*
- The majority of the proposed stadium will be located within the envelope, which stands to RL+85 which has been set based on the potential solar impact on the SCG field of play
 - Elements of architectural expression which contribute to design excellence may exceed this envelope



Section A



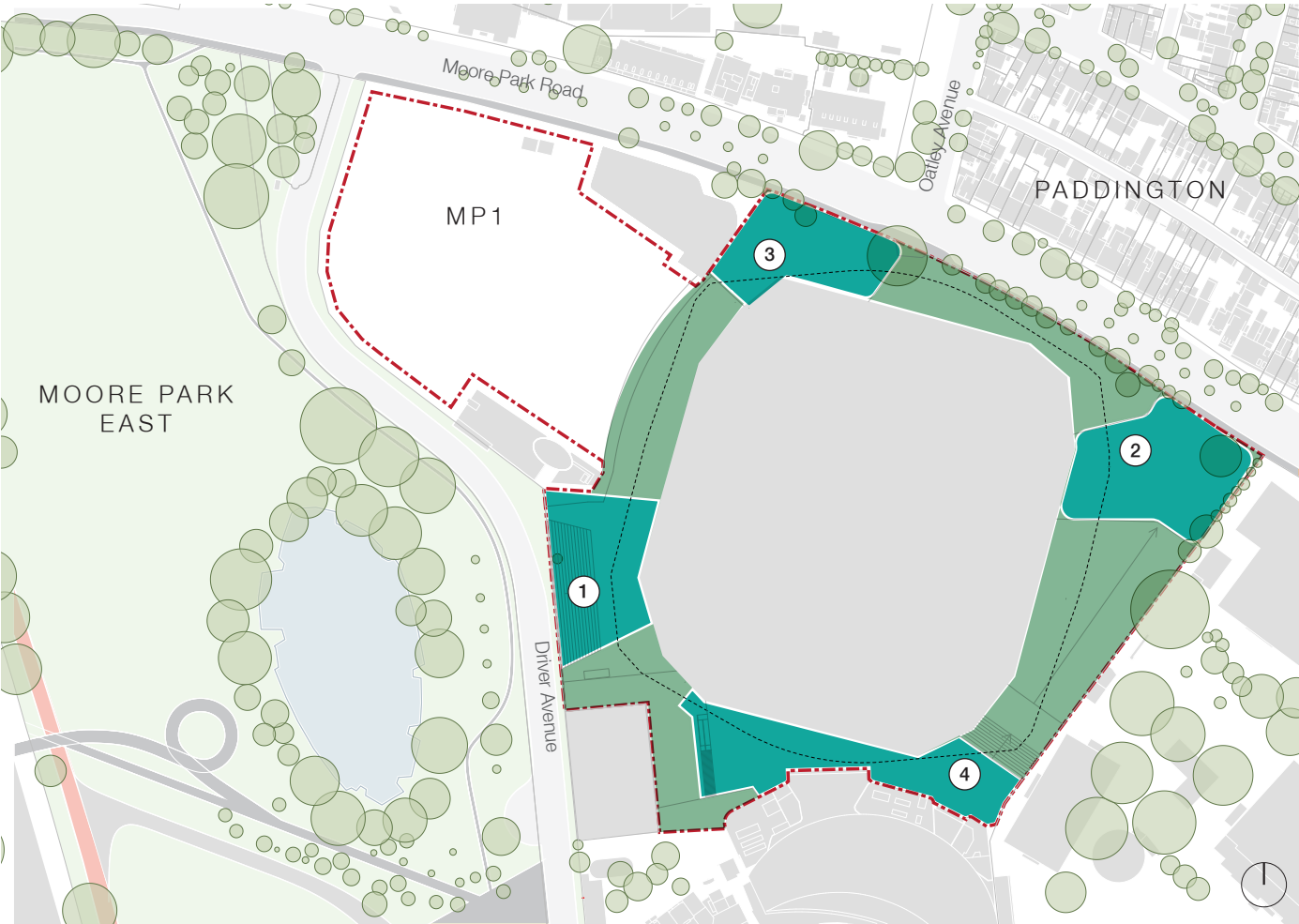
Section B

Key

- Boundaries
- Proposed Loose Fit Envelope
- Existing SFS Envelope
- Existing SFS

Guidelines

8.4 Public Realm and Open Space



Public Realm and Open Space



Precedent - North Terrace, Adelaide



Precedent - Hoekenrodeplein Amsterdam, Netherlands

General

The SFS public realm should establish a new dynamic suite of spaces that enhance and contribute to the rich fabric of public domain and landscape through Moore Park and Paddington. It should open the previously inaccessible stadium grounds to public use, create an attractive and inviting interface to its surrounds and stitch together Moore Park and Paddington. The public realm of the stadium should be multi-functional, flexible and universally accessible. It should facilitate a range of uses, including opportunities for activation, passive recreation and landscape. It should consist of a series of different public domain zones tailored to create vibrant, inviting and engaging interfaces to the sites surrounds. These spaces. It will include:

- 1. Driver Avenue Terraces
- 2. Moore Park Road Plaza
- 3. Oatley Road Place
- 4. Sydney Live Plaza

Located between Moore Park and Paddington, the Stadium site forms a conduit to connect and integrate the precinct into its surroundings. The significant existing tree planting located to the north and west of the stadium should be referenced and celebrated within the site. Additionally, the hardscape palette of the surrounding suburbs should be drawn into the stadium site to enhance the concept of a connected and continuous public domain at ground level.

Key

- Site Boundary
- Key Public Spaces
- External Concourse
- Open Space
- Kippax Lake

Principles

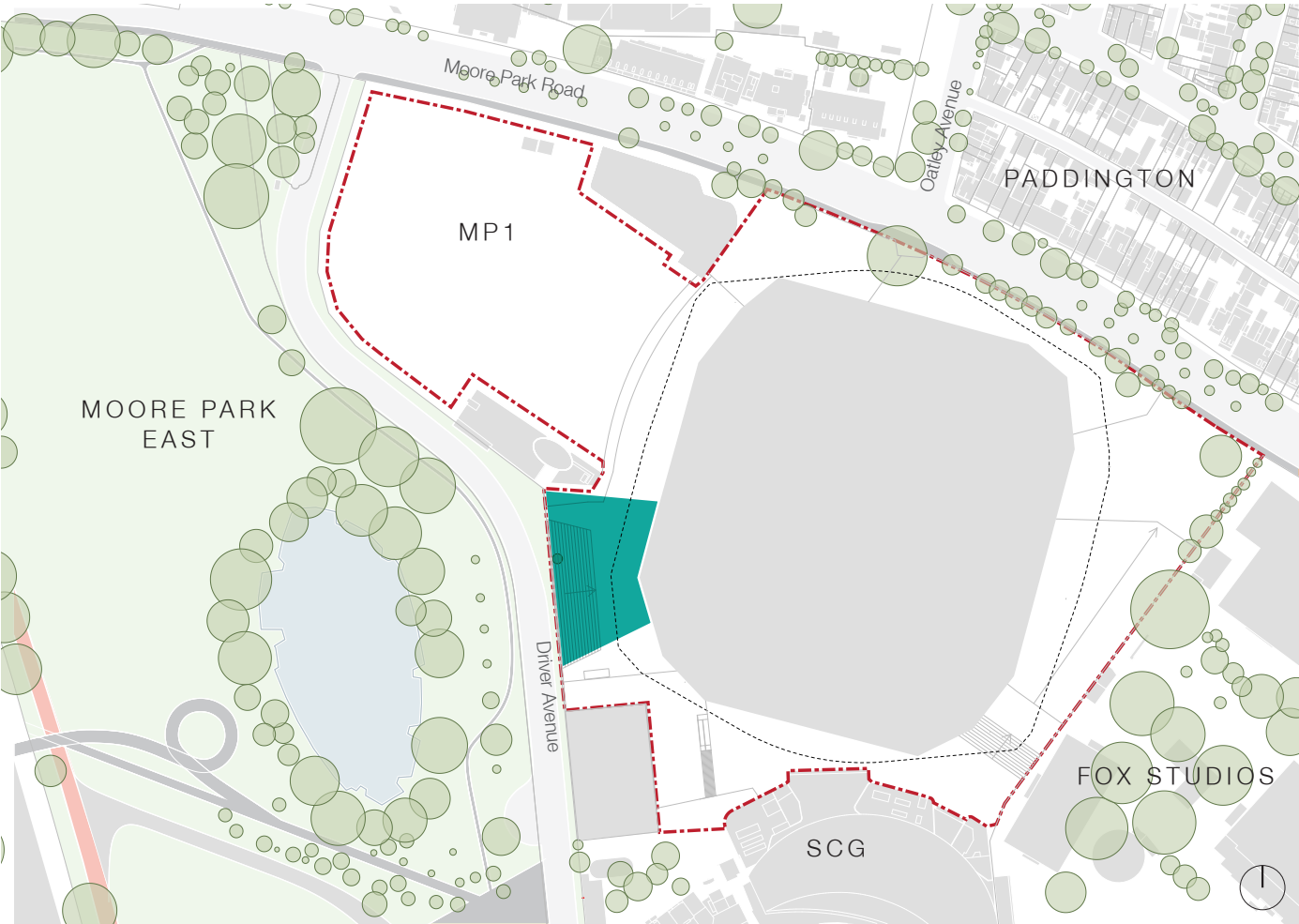
The public realm and open space should ground the precinct within its surrounds and ensure it belongs to its context. It should be robust to facilitate a heightened event day experience while providing the public with a tactile, human scale experience. The stadium site should facilitate enhanced access and use of Moore Park and the surrounding areas.

Guidelines

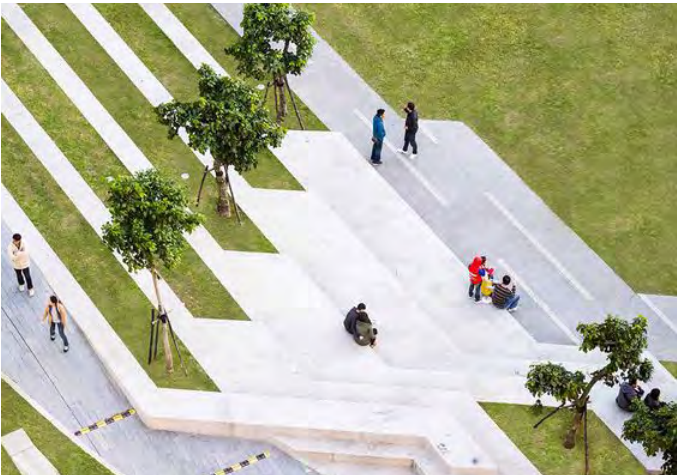
- Create a connected, accessible concourse that relates to the levels of the surrounding public domain and seamlessly integrates to the internal stadium concourse levels
- Support safe, convenient public circulation through the site to connect to key attractors and transport around the stadium day-to-day
- Maximise soft landscaping and planting to stitch the site into its surrounds and create shaded comfortable areas for the public while maintaining functionality of all public spaces, allowing clear access to and from stadium entries
- Utilise landscaping and planting to manage level changes, soften interfaces and separate vehicle zones from the public
- Promote pedestrian and active transport through the site and minimise vehicular movement within the public domain.
- Create visual links into and across the site to support wayfinding, activation and provide opportunities for passive surveillance
- Integrate wayfinding and signage to support an enhanced use of the SFS

Guidelines

Public Realm and Open Space



Driver Avenue Terraces Door



Precedent - Calligraphy Greenway, Taichung, Taiwan



Precedent - Central Park, Sydney

Driver Avenue Terraces

Event

Principles
Create an active and dynamic stadium “front door” along Driver Avenue to enhance the event day experience, transition Moore Park to the stadium and provide connection to public and active transport uses.

Guidelines

- Frame views to and from the stadium from key access routes and Moore Park
- Integrate the “front door” with temporary uses located around Kippax Lake, the proposed Sydney Common and other public domain upgrades proposed by the Moore Park Master Plan 2040
- Provide activity zones around and integrated with the terraces for gatherings, activation and food/beverage uses
- Allow the Moore Park landscape aesthetic and character to influence the design of the Driver Ave Terraces and Stadium public domain design in this area
- Promote use of soft landscape within the stadium site to reduce the heat island effect and create comfortable spaces for the public
- Address the configuration of Driver Avenue to reduce its intrusion on Moore Park and to create a less distinct buffer between the park and Stadium
- Define the stadium security line and locate publicly accessible amenity in response to event requirements

Key

- Site Boundary
- Key Public Spaces
- Open Space
- Kippax Lake

Day-to-Day

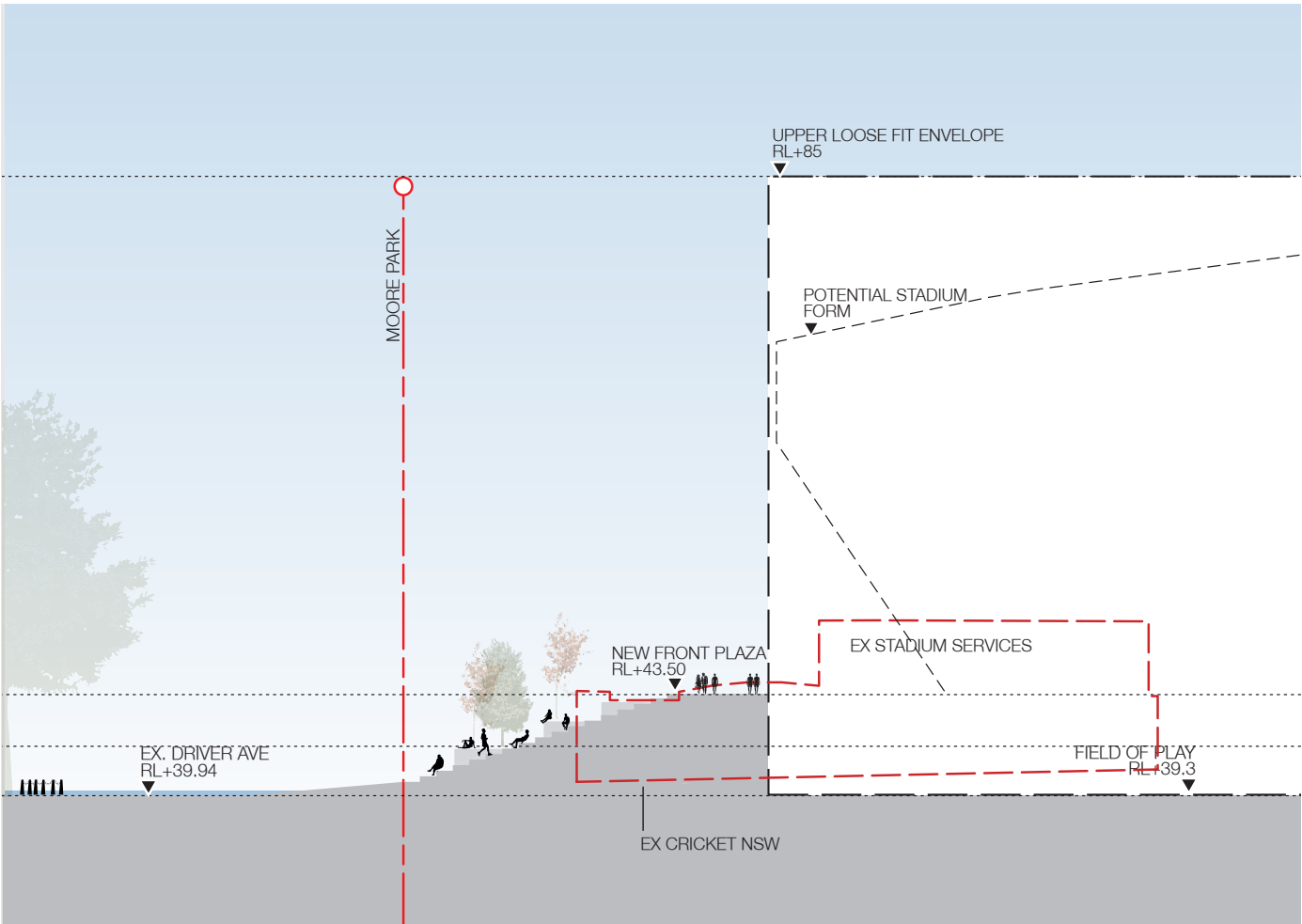
Principles
Create a multipurpose space that provides the public with new passive and active recreation opportunities to take advantage of the parkland setting and the range of day-to-day sporting uses on-site.

Guidelines

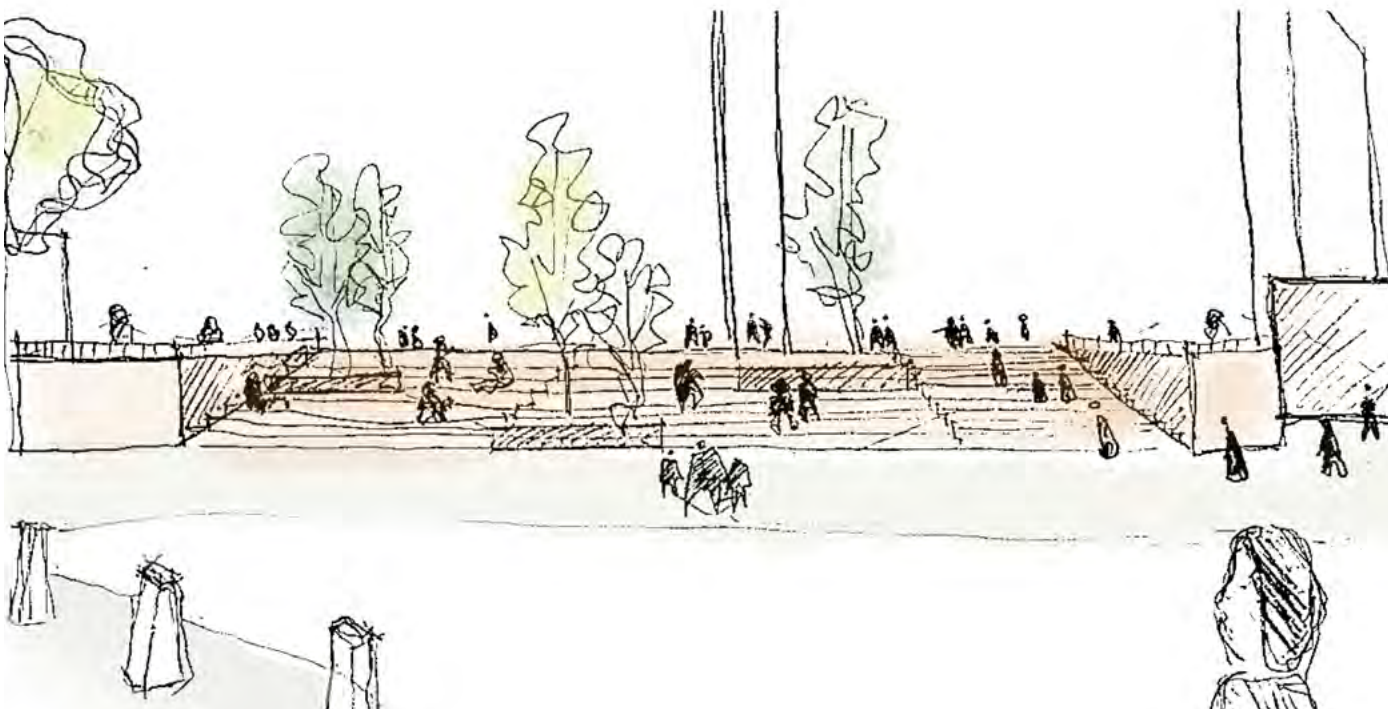
- Embed passive surveillance and spatial legibility by reducing visual obstructions
- Promote recreational use of the SFS through the provision of multi purposes spaces and infrastructure including public domain furniture, planting and sporting facilities
- Leverage the parkland setting to enhance day-to-day uses of the site through an extension of character and provision of additional amenity such as bike parking and exercise facilities

Guidelines

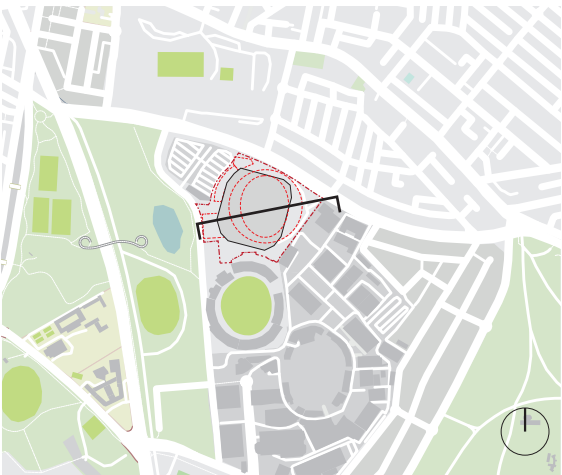
Public Realm and Open Space



Driver Avenue Terraces Section



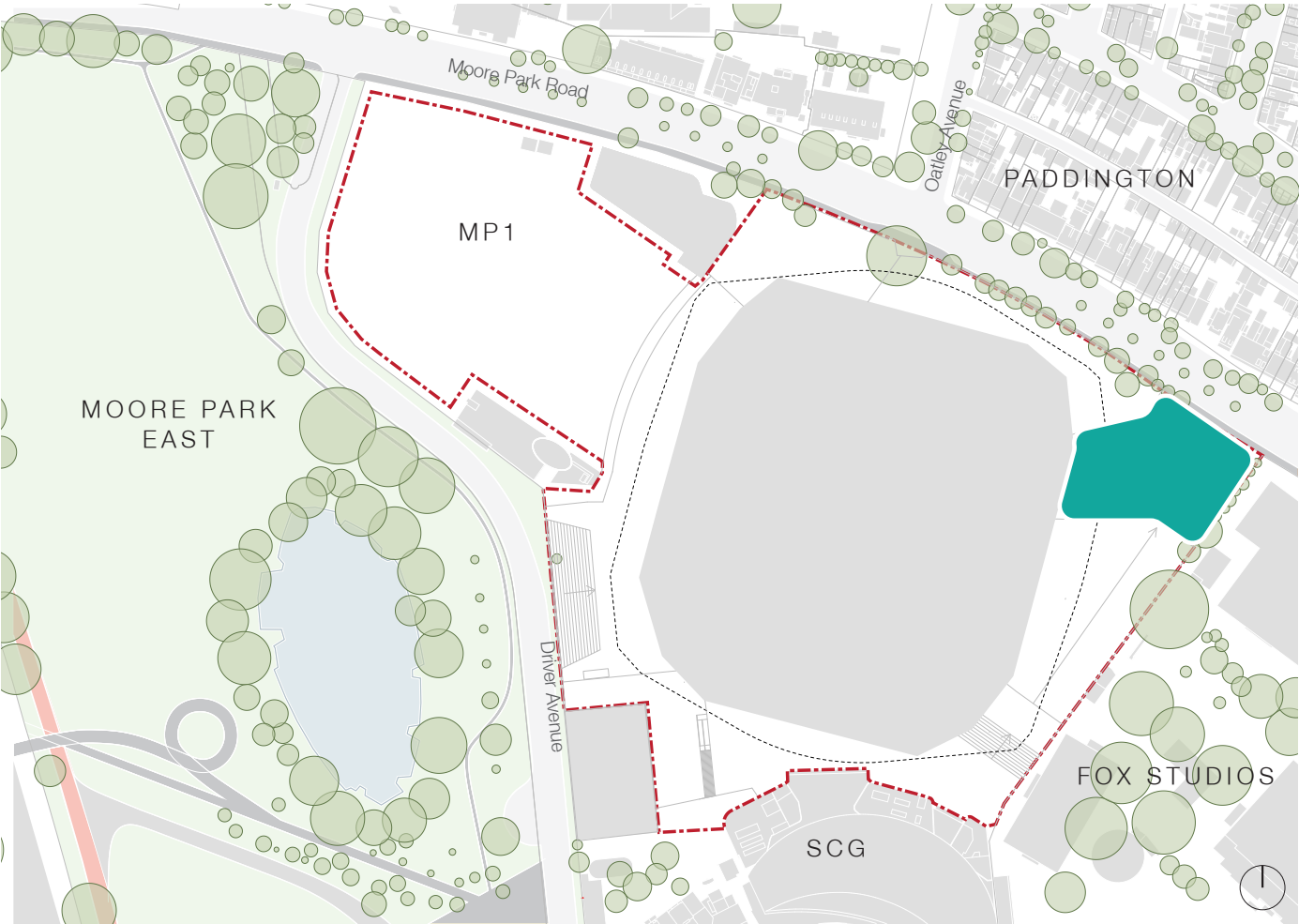
Driver Avenue Terraces Section



Section Plan

Guidelines

Public Realm and Open Space



Moore Park Road Front Door



Precedent - Neue Meile Böblingen, Oslo, Norway



Precedent - Bonn Square, Oxford, UK

Moore Park Road Plaza

Event

Principles

Create an active and inviting stadium entry along Moore Park Road to enhance the event day experience, support opportunities for gathering, accommodate activation and facilitate breakout spaces for food and beverage outlets.

Guidelines

- Provide activation and food/beverage opportunities at external concourse level
- Frame views towards the stadium and along the Moore Park Road frontage
- Prioritise pedestrian movement from Paddington and surrounds over vehicular access to Paddington Lane
- Utilise tree planting to create a pleasant and welcoming pedestrian environment
- Integrate existing site features such as sculptures in a meaningful way to create a feature and destination of this part of the site
- Integrate with surrounding wayfinding and ensure clear signage for connections to the stadium, entry points and other local destinations
- Integrate Moore Park Road public domain, footpath and cycleway with the external concourse to the north of the Stadium

- Retain, protect and enhance the existing tree planting along Moore Park Road. Utilise planting to provide separation between vehicular movement on Moore Park Road and public concourse / footpath
- Integrate hostile vehicle barriers along Moore Park Road, integrated with other public domain elements to minimise clutter

Day to Day

Principles

Create an inviting local entry that builds upon existing pedestrian / cycle connections and encourages the public to utilise space around the stadium as access through to Moore Park.

Guidelines

- Integrate wayfinding for Moore Park and Moore Park Light Rail Stop
- Embed passive surveillance within the stadium form
- Consider implementing an operable line of security to manage use of concourse outside of operational hours in areas that have low levels of accessibility, passive surveillance and may pose a threat to safety and security within the site
- Promote spatial legibility by reducing visual obstructions, providing appropriate lighting and continuous, accessible concourse paving to guide pedestrians through the space
- Select hardscape materials to visually stitch public domain spaces and paths outside the site with those within

Key

- Site Boundary
- Key Public Spaces
- Open Space
- Kippax Lake