

Architectural Design

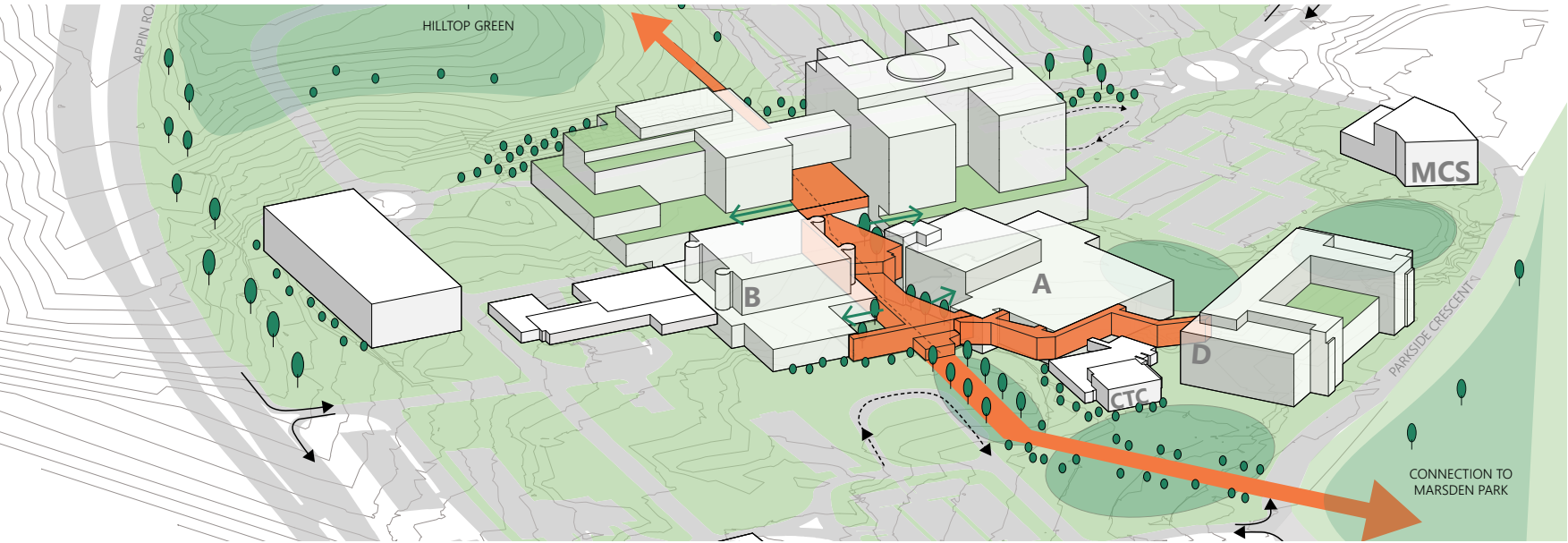


Diagram: Hospital Spine

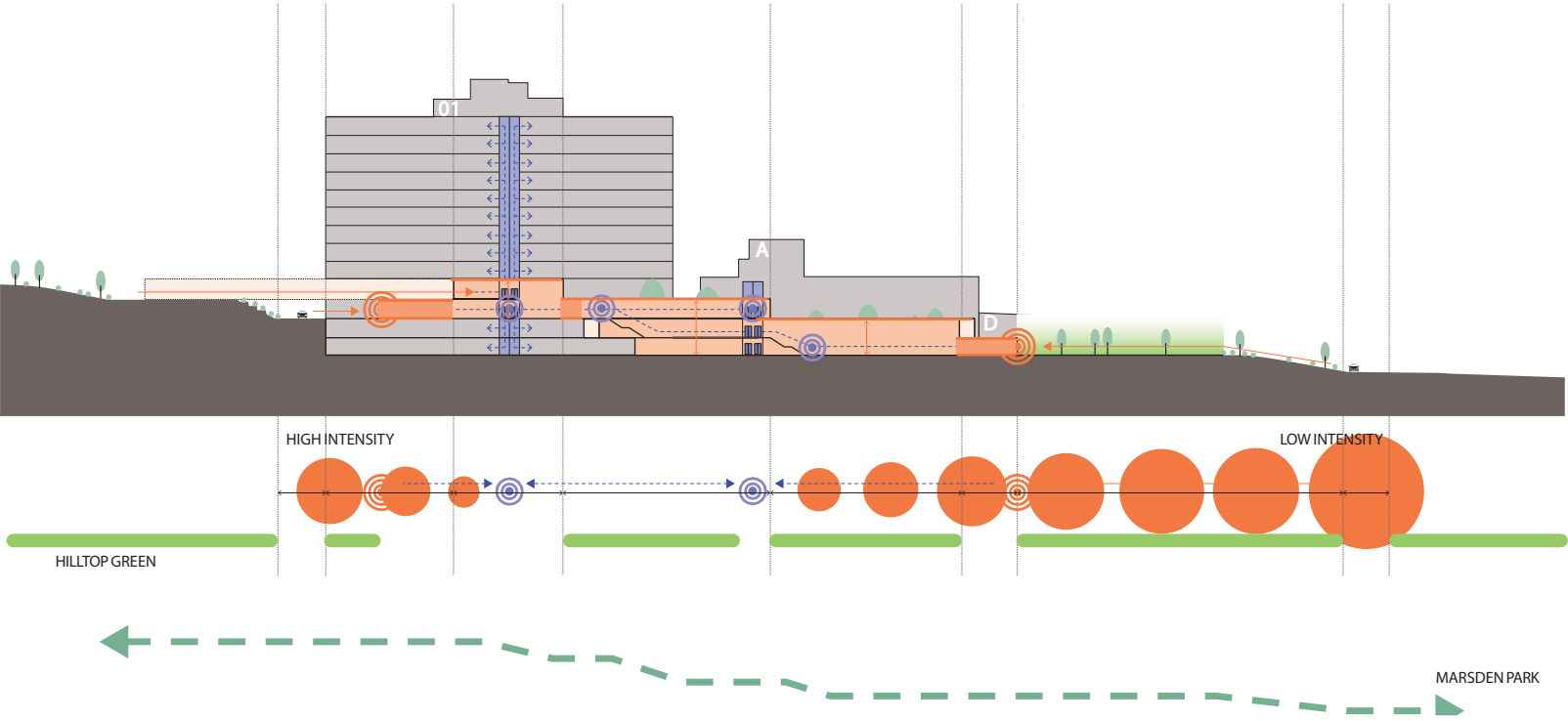


Diagram: Hospital Spine Section

3. Hospital Spine

The new development has been designed to incorporate a main pedestrian circulation thoroughfare that connects proposed and existing clinical services buildings across the site. The Hospital Spine will be a civic space intended for use by both public and staff alike. Entries will be toward the north and south and will connect levels L00, L01 and L02 with an atrium space through to Level L04.

The main hospital entry (front door) will be located on Level L02 and be located towards the south. This entry will be the primary entry to the hospital for patient admissions and will incorporate access to vehicular drop-off points as well as access to public transport, including bus services. The main public car park will be near this entry and will comprise of a pedestrian bridge link across the main drop-off road. This pedestrian bridge will have lift and stair access connections back to the external forecourt entry at Level L02. An entry canopy will provide undercover access.

The northern entry will be a secondary entry point and will provide access to the 'Hospital Spine' at Level L00. This entry will transition to external areas and is designed to interface with the surrounding pedestrian zones and landscaped spaces, including connections back toward Marsden Park and the private hospital located directly north of the site. The northern entry to the 'Hospital Spine' is intended to act as an ambulatory/day patient access point to the site.

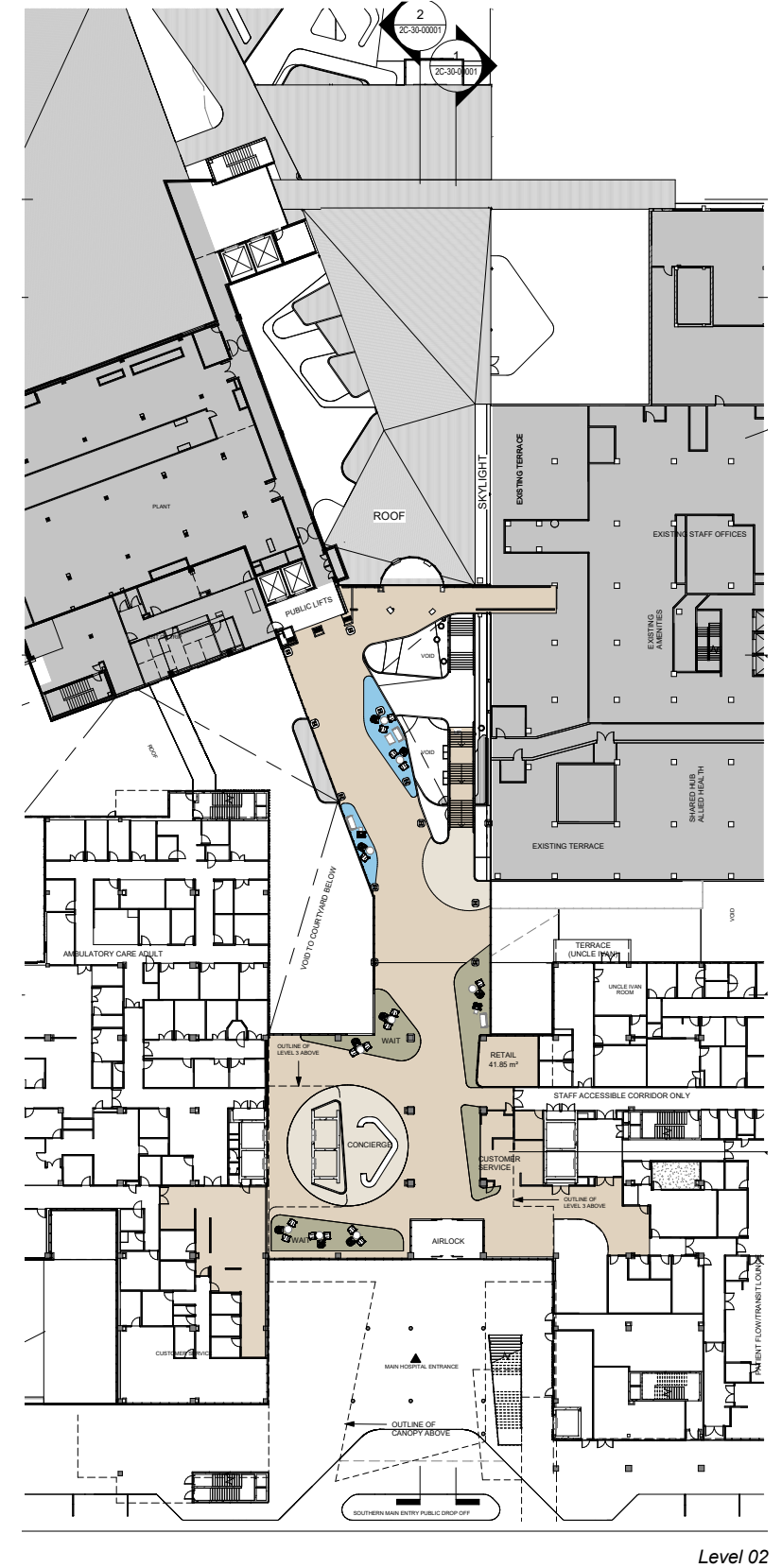
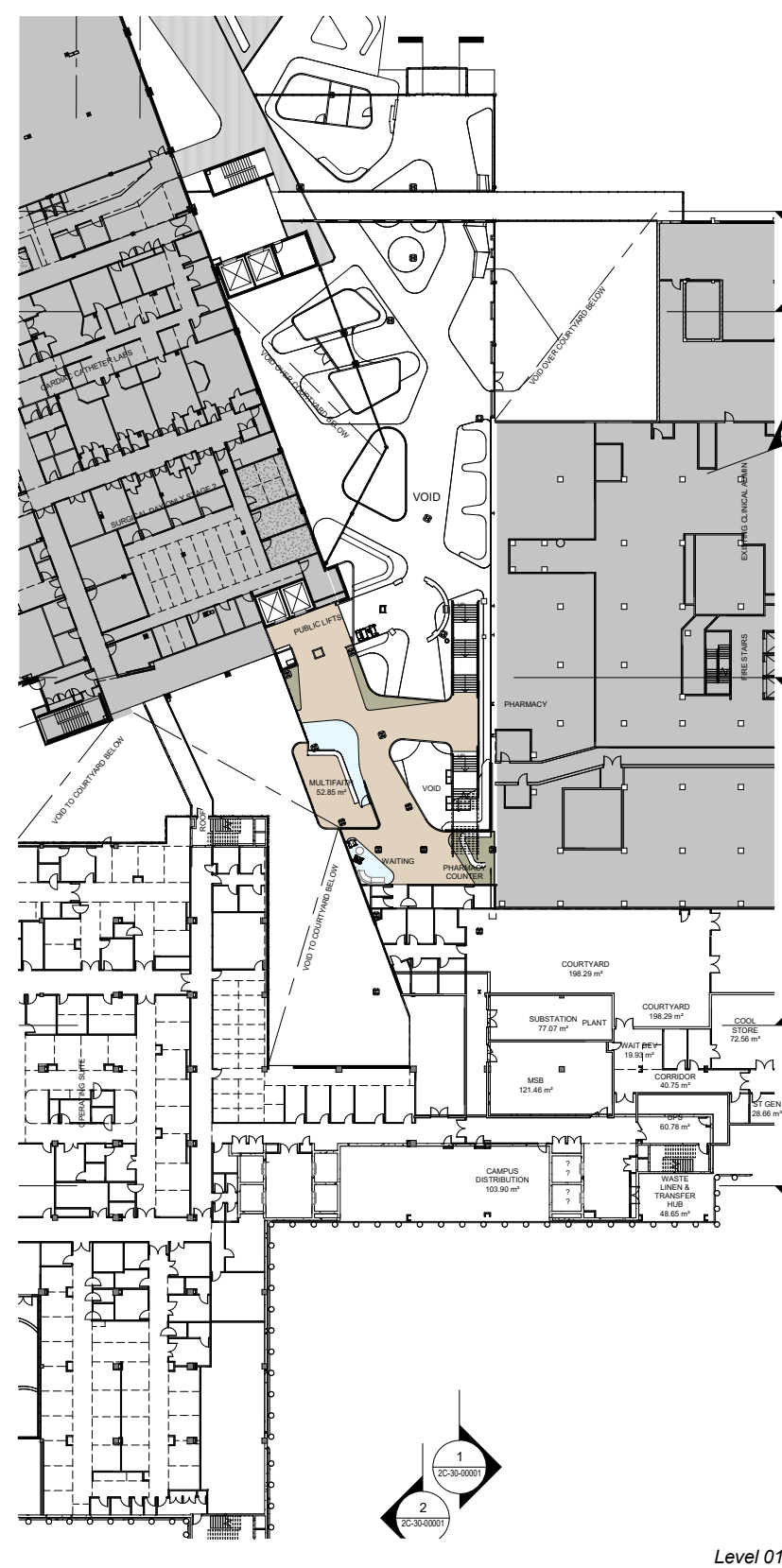
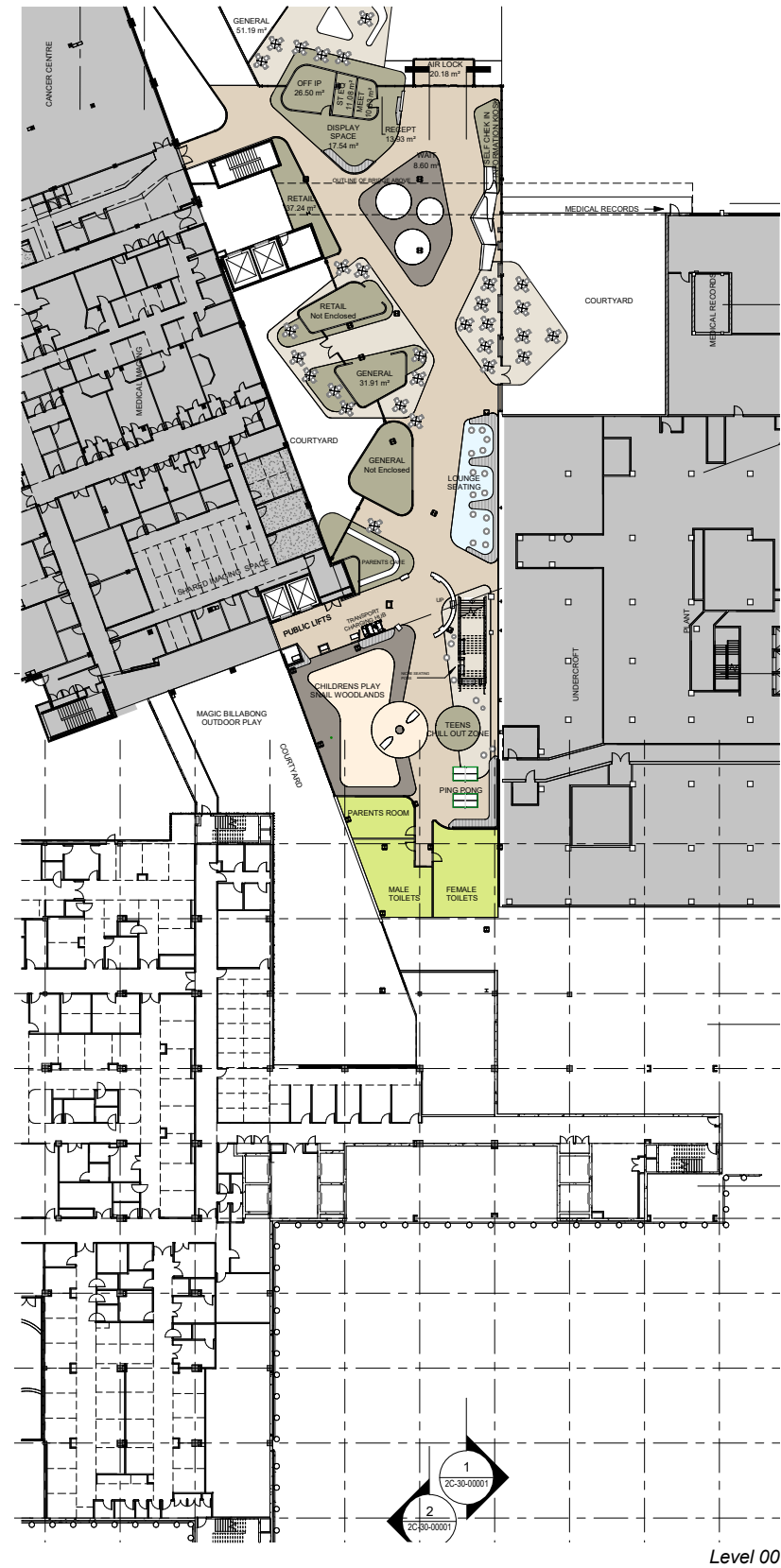
Some key elements of the 'Hospital Spine' design include:

- Wayfinding and orientation, reception points, including integrated art work strategy;
- Interface between internal and external areas such as landscaped courtyards;
- Natural ventilation;
- Retail zones, including cafes and informal waiting areas; and
- Activity zones, including play areas, demonstration &/or performance spaces.

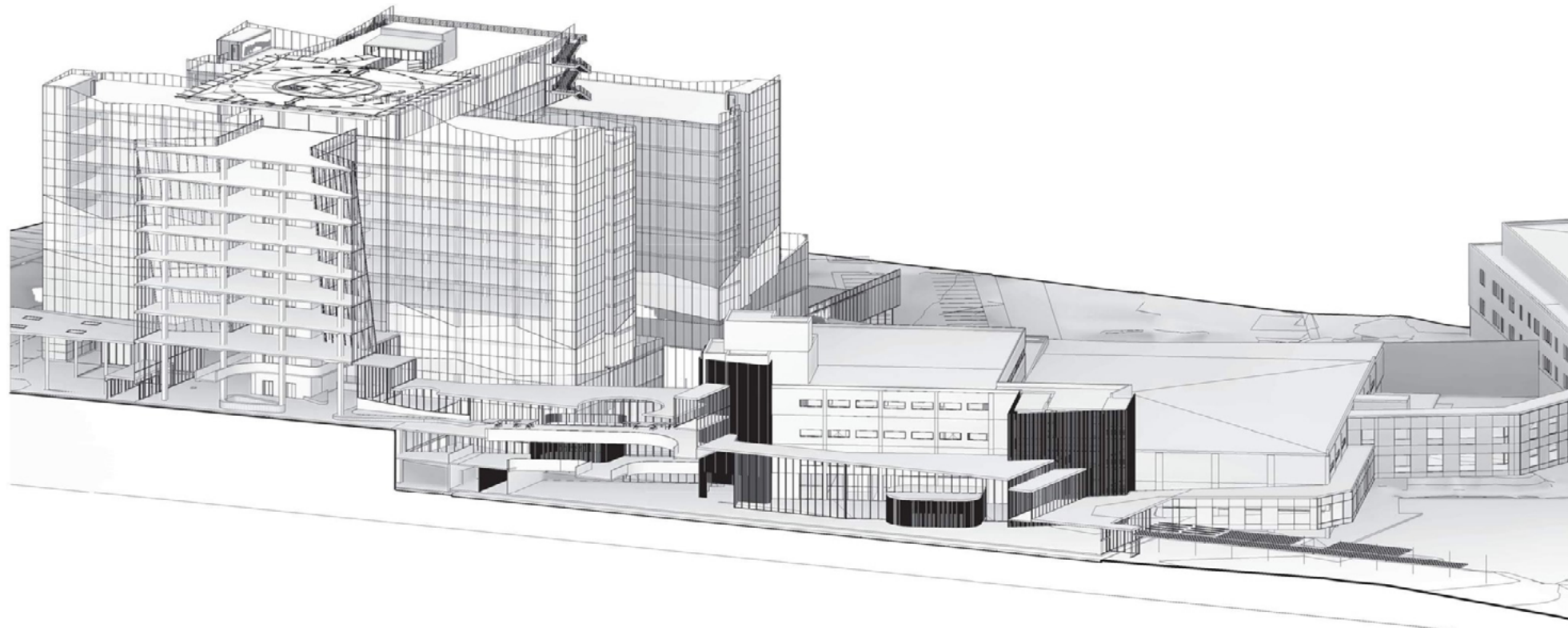
Link connections back to Buildings A, B and D will be provided at various levels and will utilise connections to existing lifts where applicable. A clinical cross link (bridge) will be provided between Building A and B. The existing public and clinical links to Building D will be incorporated into the design of the 'Hospital Spine'.

In addition to forming the main pedestrian thoroughfare through the hospital campus, the "Hospital Spine" will work as an ordering device that informs the masterplanning with regards to future development. The 'Hospital Spine' provides ease of connection for any future developments that are envisaged to occur, this includes demolition and replacement of older building stock. The 'Hospital Spine' also has the capacity to extended further north if future development requires.

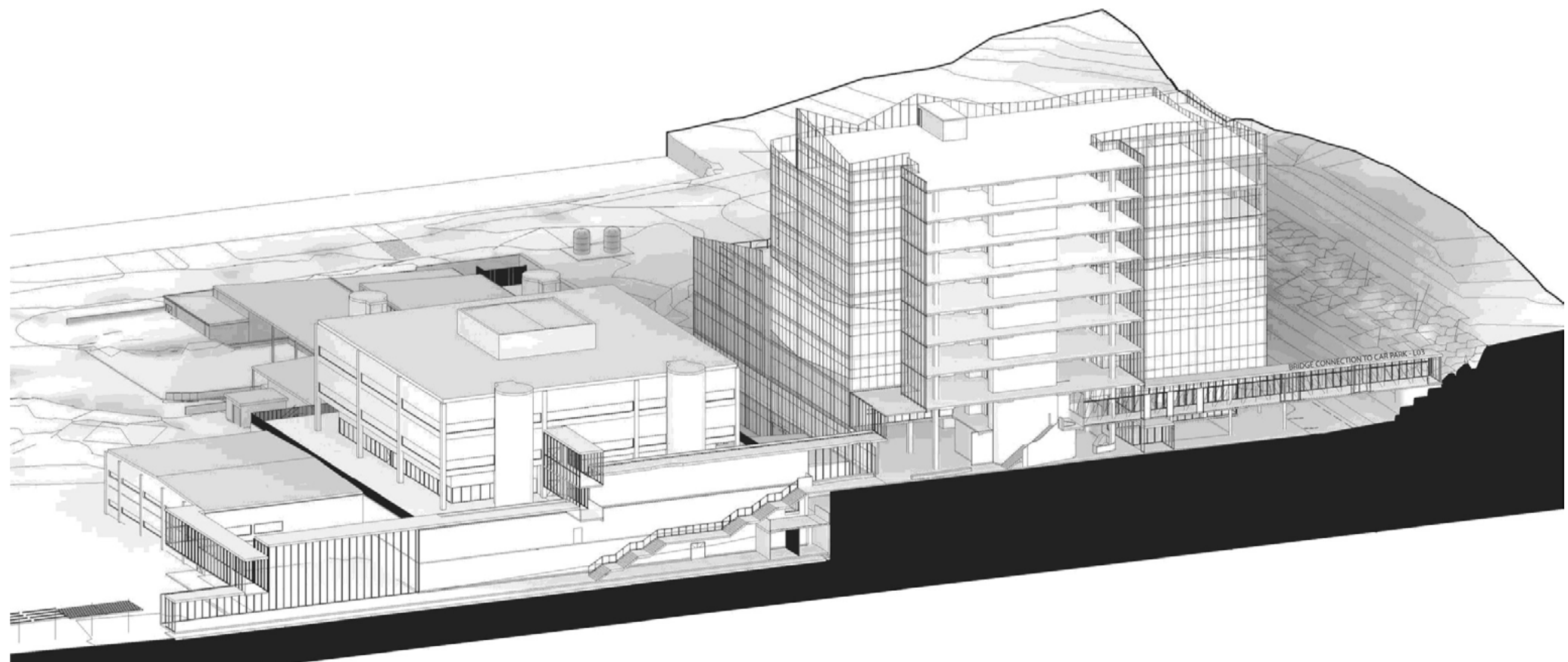
Hospital Spine: Plans



Billard Leece Partnership
Campbelltown Hospital Redevelopment



Hospital Spine - East



Hospital Spine - West



Hospital Spine Interior View - Northern Entry