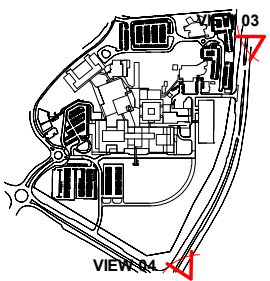


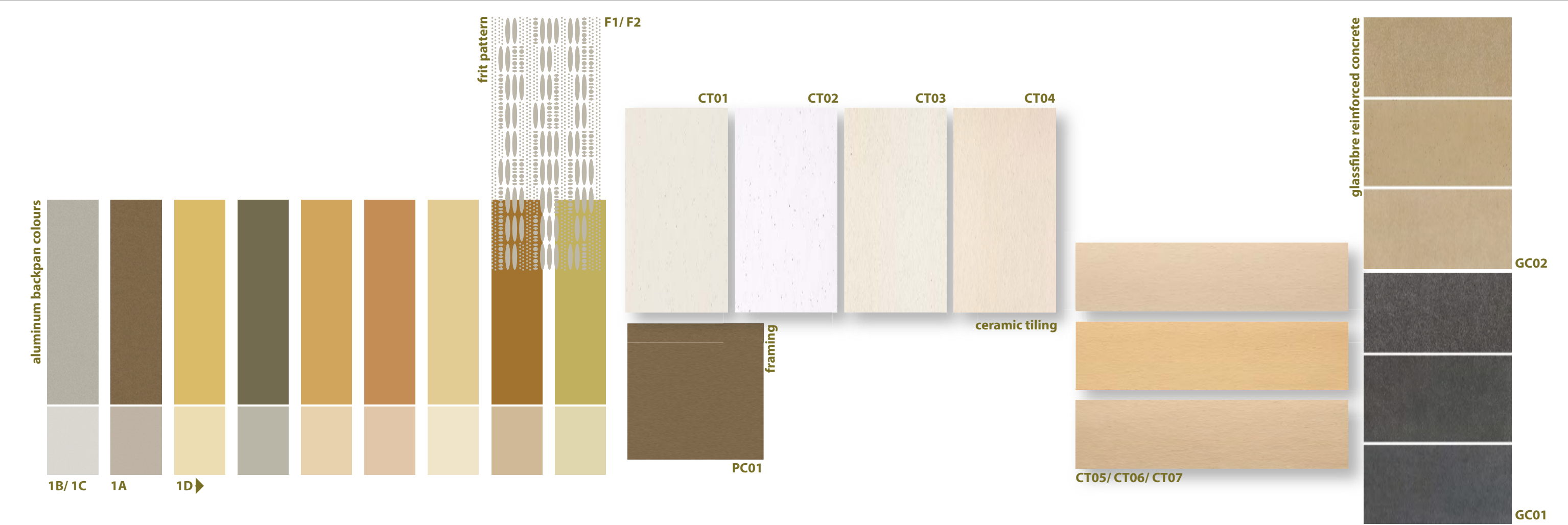
G	ISSUED FOR SSD	30/07/2018	DR
F	ISSUE FOR SSD	17/07/2018	DR
E	ISSUE FOR SSD	25/06/2018	RB
D	ISSUE FOR SSD	19/06/2018	DR
C	ISSUE FOR SSD	30/05/2018	RB
Revision	Description	Date	Initial





E	ISSUE FOR SSD	25/06/2018	RB
D	ISSUE FOR SSD	19/06/2018	DR
C	ISSUE FOR SSD	30/05/2018	RB
B	ISSUE FOR SSD	29/05/2018	RB
A	DRAFT ISSUE FOR SSD	25/05/2018	RB
Revision	Description	Date	Initial





SYSTEM DESCRIPTION AND EXTERNAL FINISHES

Construction Type	Description
Type 1A	<ul style="list-style-type: none"><li>Customised unitised curtain wall system</li><li>The façade enclosure will comprise a vertical panel system design to span floor to a consistent module width.</li></ul>
General Configuration	<ul style="list-style-type: none"><li>Typical vertical panel modules will be nominally 4200mm in height</li><li>Nominal panel width will be 1050mm, with non-typical conditions at internal and external corners.</li><li>Typical panel band modules will be nominally 2100, 2400, and 2700 for the primary vision ban, and nominal 2100, 1800 and 1500 for the spandrel panel ban.</li><li>Panel stack joint is located nominally 150 above SSL to centre of the transom</li><li>For typical conditions the ceiling level is located 2700mm (nominally) above FFL</li><li>The system is fully structurally glazed but designed to allow retrofitting of capture beds</li></ul>
Vision Construction	<ul style="list-style-type: none"><li>Front glazed unit</li><li>Single glazed high-performance glass</li><li>Custom design frit interlayer nominal section of 350mm top and bottom of glass</li></ul>
	Colour and Finish: Aluminum Frame: <i>Dulux Powdercoat Electro Sensational Champagne [PC01]</i> Glass: <i>Neutral silver grey</i>
Spandrel Construction	<ul style="list-style-type: none"><li>Single (front) glazed spandrel with aluminum faced shadow box</li><li>Custom design frit interlayer to full extent of spandrel glass</li></ul>
	Colour and Finish: Aluminum Frame: <i>Dulux Powdercoat Electro Sensational Champagne [PC01] or equivalent paint finish</i> Glass: <i>Neutral silver grey</i>
Frit	<ul style="list-style-type: none"><li>Frit Type F1 Custom designed repeat pattern [F1]</li><li>Clear laminated coated frit (or patterned) interlayer</li></ul>
	Colour and Finish: <i>Silver (reflective)</i>

Construction Type	Description
Type 1B	<ul style="list-style-type: none"><li>Same suite as Type 1A with the following variants:<ul style="list-style-type: none"><li>Typical panel band modules will be nominally 2700mm for the primary vision panel and 1500mm for the spandrel panel</li><li>Vision Construction with no frit interlayer</li><li>Spandrel Construction aluminum faced shadow box- Colour: <i>Silver</i></li></ul></li></ul>
Construction Type	Description
Type 1C	<ul style="list-style-type: none"><li>Same suite as Type 1A with the following variants:<ul style="list-style-type: none"><li>Typical panel band modules will be nominally 2700 and 1500 for the spandrel panel</li><li>No vision construction</li><li>Spandrel Construction (with frit) aluminum faced shadow box- Colour: <i>Silver</i></li></ul></li></ul>
Construction Type	Description
Type 1D	<ul style="list-style-type: none"><li>Same suite as Type 1A with the following variants:<ul style="list-style-type: none"><li>Frit Type F2 Custom designed repeat pattern [F2]; Clear laminated coated frit (or patterned) interlayer; Colour: Silver</li><li>Vision Construction: custom design frit interlayer nominal section of 350mm top and bottom of glass [F2]</li><li>Spandrel Construction with frit [F2] and aluminum faced shadow box with 7 colour variants</li></ul></li></ul>
Construction Type	Description
Type 2	<ul style="list-style-type: none"><li>Custom unitized shopfront system</li><li>The façade enclosure will comprise a vertical panel system design to span floor to a consistent module width</li></ul>
General Configuration	<ul style="list-style-type: none"><li>Typical vertical panel modules will be nominally 3150mm in height</li><li>Nominal module width will be 1050 and 2100 with non-typical conditions at internal and external corners.</li><li>Shop front is contained within purpose extruded subsill and subhead</li></ul>
Vision Construction	<ul style="list-style-type: none"><li>Front glazed unit</li><li>Single glazed high-performance glass</li></ul>
	Colour and Finish: Aluminum Frame: <i>Dulux Powdercoat Electro Sensational Champagne [PC01]</i> Glass: <i>Neutral silver grey</i>

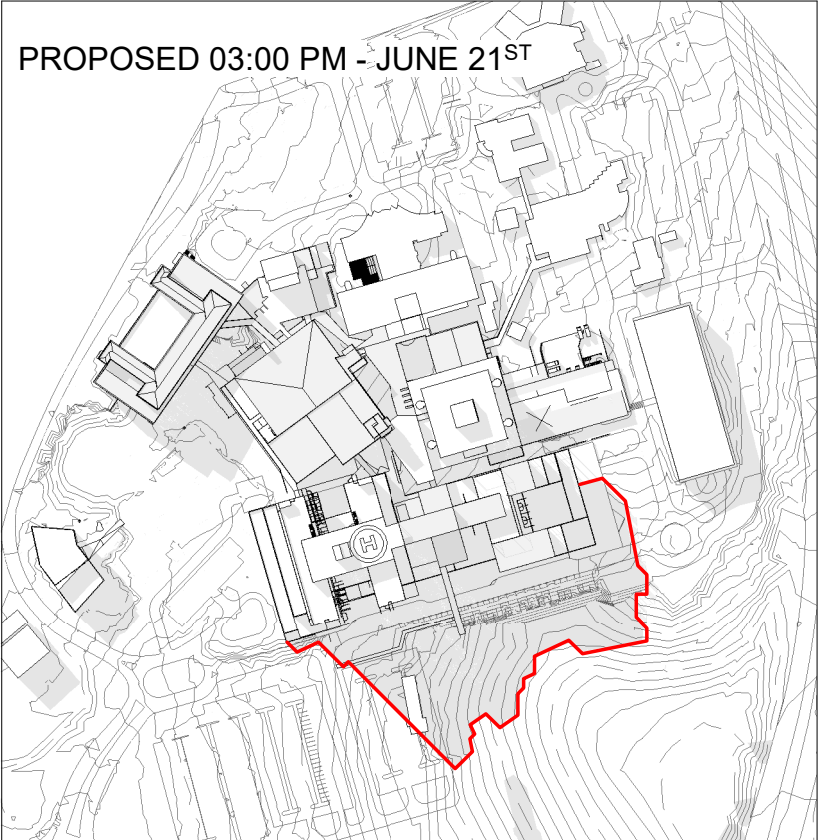
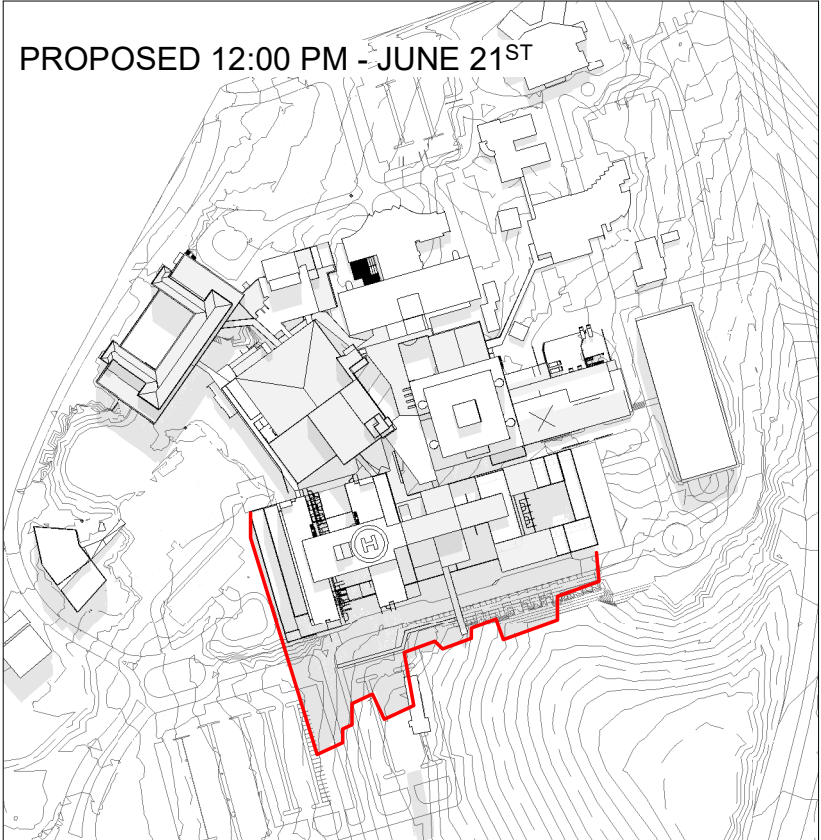
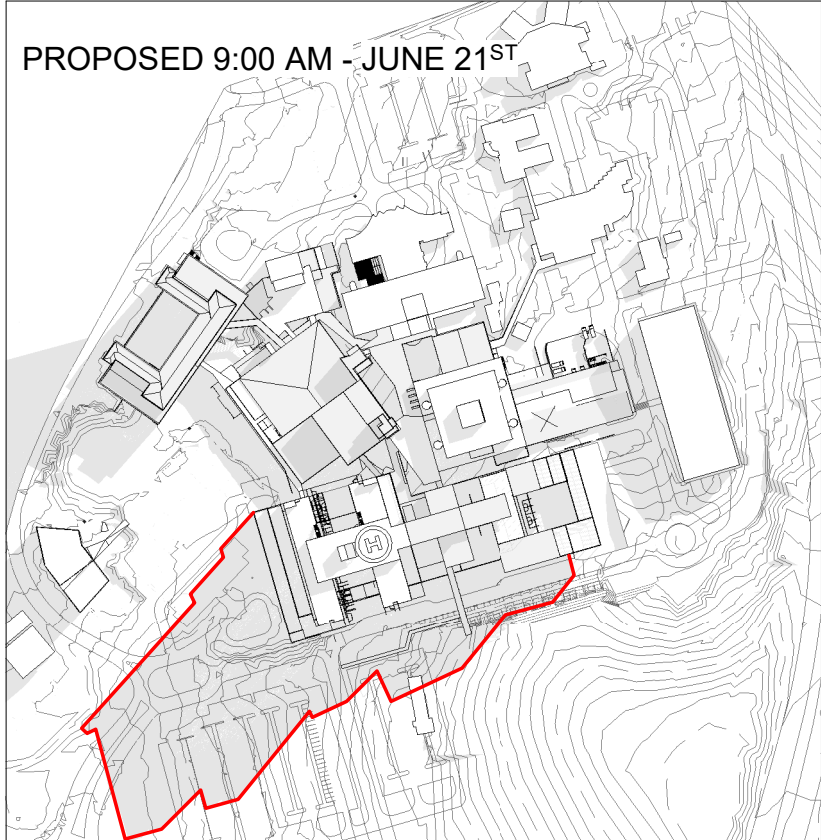
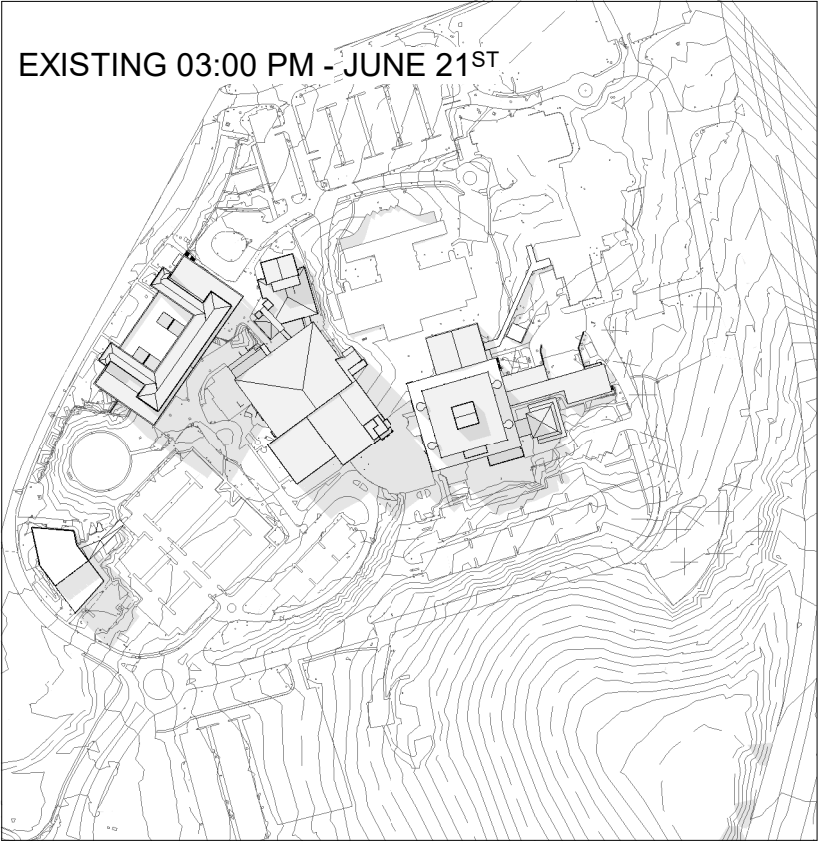
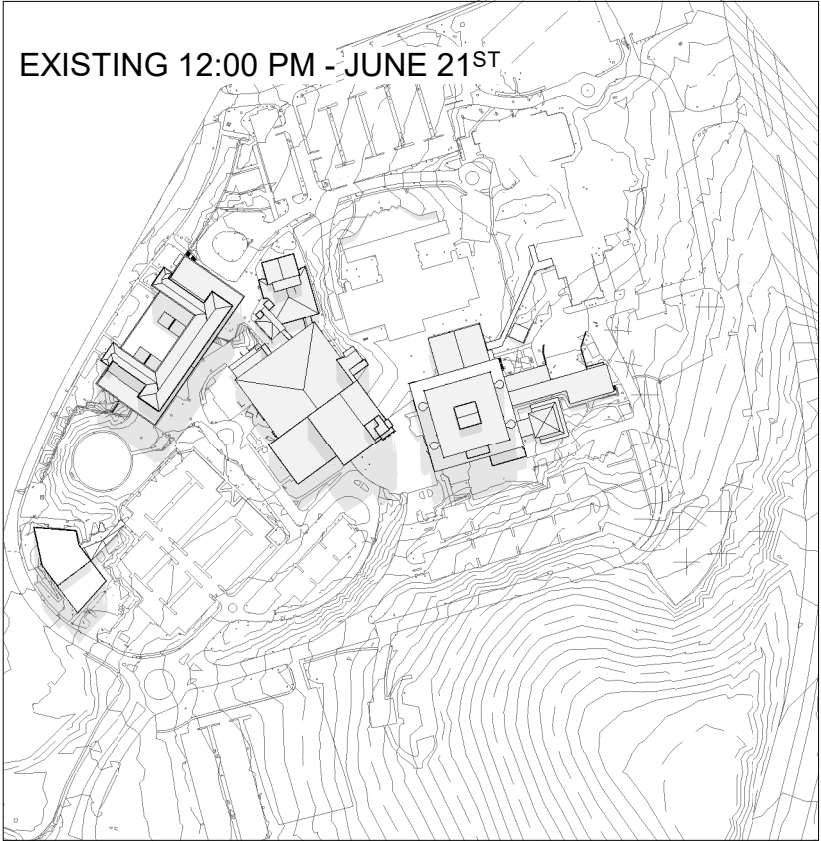
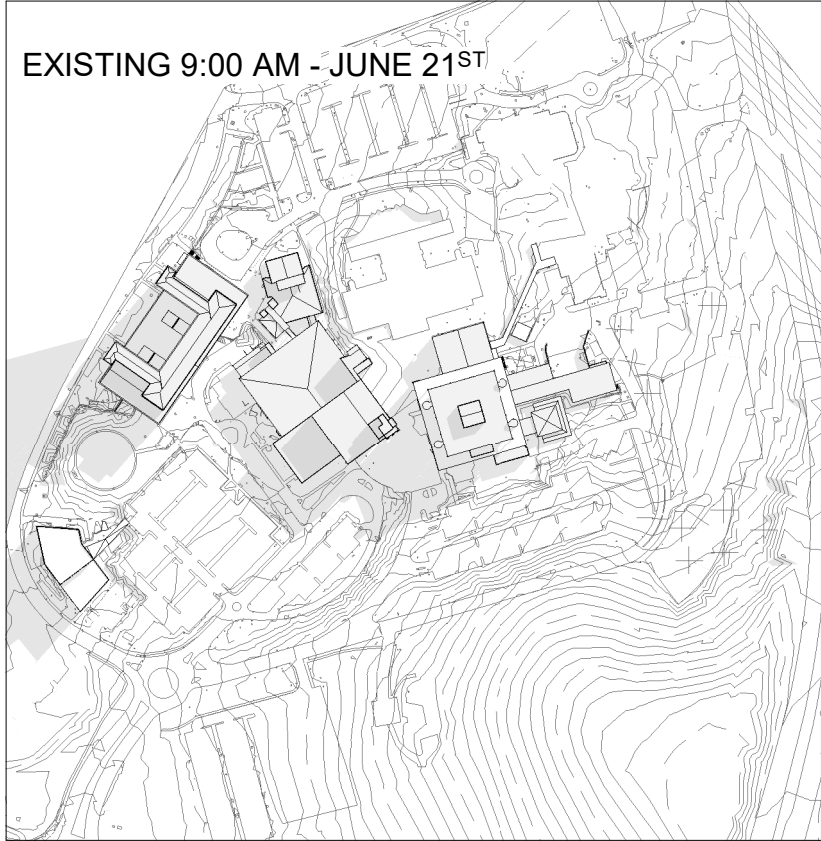
Construction Type	Description
Type 3A	<ul style="list-style-type: none"><li>Customised tile panels over structural wall (Ventilated Façade)</li></ul>
General Configuration	<ul style="list-style-type: none"><li>Panel is Tempio Systems (FK System) or similar</li><li>Panel is supported by proprietary rail system to backup wall</li><li>Panels comprised of varying profiles (6 types)</li><li>Typical vertical panel modules will be 2100/1500/600mm in height</li><li>Nominal panel width will be 420/315/105mm</li><li>Panel stack joint is located nominally 150 above SSL</li><li>For typical conditions the ceiling level is located 2700mm (nominal above FFL</li></ul>
	Colour and Finish: Tile: Matt Enamel <i>Marfil Barcelona</i> EM2250 [CT01]; Satin Enamel <i>White Sevilla</i> ES4220 [CT02]; Natural Blanco <i>W00-20</i> [CT03]; Natural Blanco <i>W2-07</i> [CT04]
Construction Type	Description
Type 3B	<ul style="list-style-type: none"><li>Same suite as Type 3A with the following variants:</li></ul>
General Configuration	<ul style="list-style-type: none"><li>Flat faced panels (2 types)</li><li>Typical vertical panel modules will vary in length</li><li>Nominal panel width will be 525mm</li></ul>
Vision Construction	<ul style="list-style-type: none"><li>Front glazed window suite</li><li>Single glazed high-performance glass</li><li>Size varies refer to Elevations</li></ul>
	Colour and Finish: Tile: Natural <i>Amarillo Y00-05</i> [CT05]; Natural <i>Amarillo Y125-05</i> [CT06]; Natural <i>Amarillo Y05-02</i> [CT07]; Aluminum Frame: <i>Dulux Powdercoat Electro Sensational Champagne [PC01]</i> Glass: <i>Neutral silver grey</i>

Construction Type	Description
Type 4	<ul style="list-style-type: none"><li>Glassfibre reinforced concrete over structural wall (Ventilated Façade)</li></ul>
General Configuration	<ul style="list-style-type: none"><li>Panel is <i>Fibre C</i> or similar</li><li>Panel is supported by proprietary rail system to backup wall</li><li>Panels comprised of varying panel sizes</li><li>Typical vertical panel modules will be 2100/1500/600mm in height</li><li>Nominal panel width will be 1050/525mm</li><li>Panel stack joint is located nominally 150 above SSL</li><li>For typical conditions the ceiling level is located 2700mm (nominal above FFL</li></ul>
Vision Construction	<ul style="list-style-type: none"><li>Front glazed window suite</li><li>Single glazed high-performance glass</li><li>Size varies refer to Elevations</li></ul>
	Colour and Finish: Tile: <i>Anthracite Matt, Ferro, Ferro Light</i> [GC01], <i>Sandstone Matt, Ferro, Ferro Light</i> [GC02] Aluminum Frame: <i>Dulux Powdercoat Electro Sensational Champagne</i> with external aluminum flat plate to all surrounds ( <i>Dulux Powdercoat Electro Sensational</i> ) [PC01] Glass: <i>Neutral silver grey</i>
Construction Type	Description
Type 5	<ul style="list-style-type: none"><li>Panelised two stage louvre</li></ul>
General Configuration	<ul style="list-style-type: none"><li>Vertical extruded louvre blades with powdercoat finish</li><li>Frames are nominally 1050mm modules by full height of enclosing space</li><li>Louvres are fitted with polypropylene insect/bird mesh internally</li><li>Frames are supported top and bottom (nominally 4200mm) by primary structure</li></ul>
	Colour and Finish: <i>Dulux Powdercoat Electro Sensational Champagne</i> [PC01]

		25/05/2018		
Revision	Description	Date	Initial	Checked





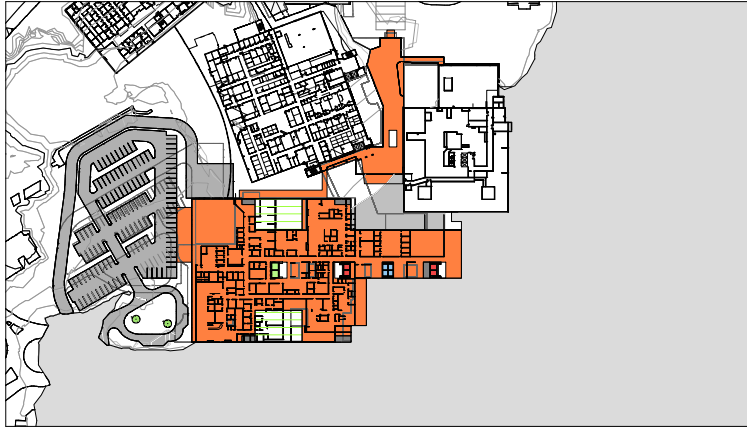


— EXTENT OF SHADOW

B	ISSUE FOR SSD	29/05/2018		
A	DRAFT ISSUE FOR SSD	25/05/2018		
Revision	Description	Date	Initial	Checked



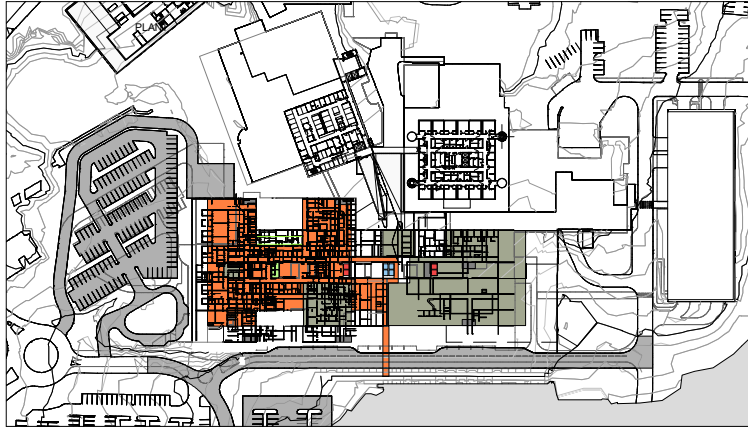




1

PLAN - L00 - GFA (8,739m<sup>2</sup>)

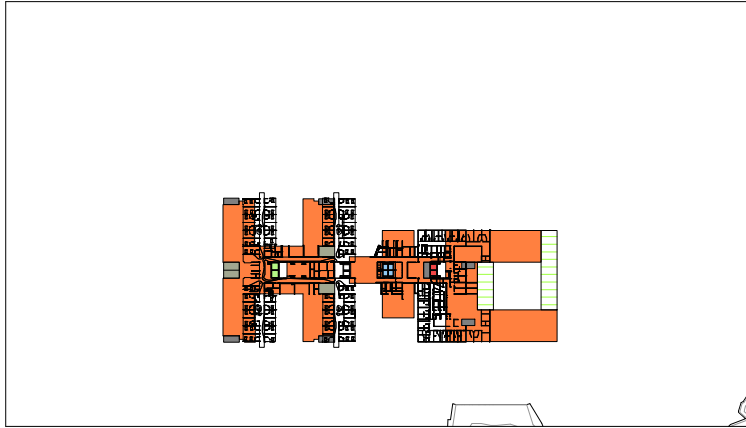
1 : 4000



4

PLAN - L03 - GFA (4,270m<sup>2</sup>) + PLANT

1 : 4000



7

PLAN - L06 - GFA (6,288m<sup>2</sup>)

1 : 4000



2

PLAN - L01 - GFA (9,022m<sup>2</sup>)

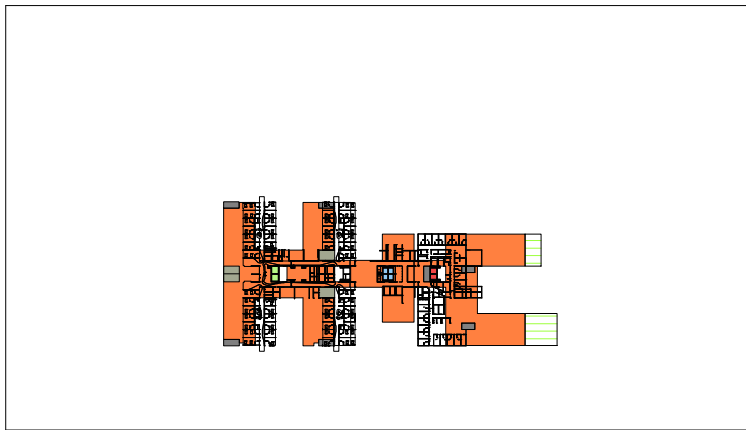
1 : 4000



5

PLAN - L04 - GFA (7,870m<sup>2</sup>)

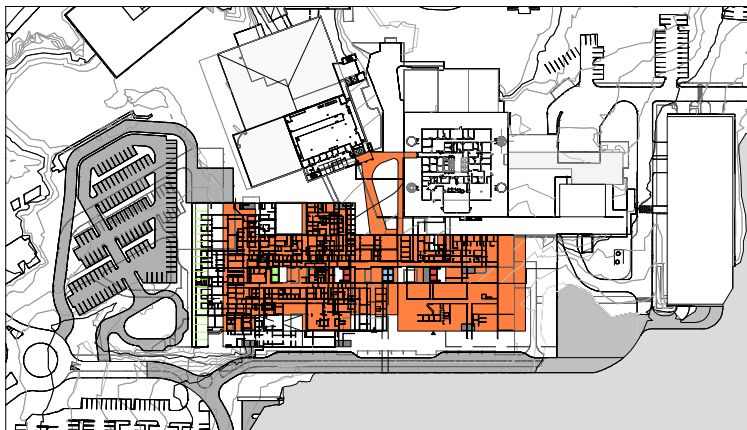
1 : 4000



8

PLAN - L07 - GFA (5,943m<sup>2</sup>)

1 : 4000



3

PLAN - L02 - GFA (8,543m<sup>2</sup>)

1 : 4000



6

PLAN - L05 - GFA (7,028m<sup>2</sup>)

1 : 4000

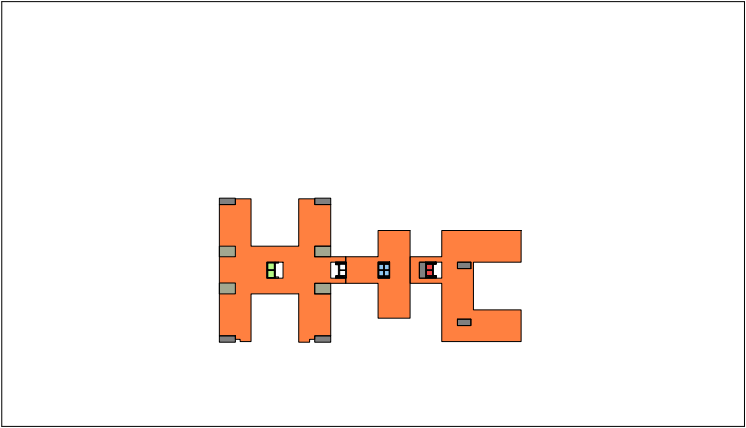
LEVEL	GFA/FLOOR
L00	8,739m <sup>2</sup>
L01	9,022m <sup>2</sup>
L02	8,543m <sup>2</sup>
L03	4,270m <sup>2</sup>
L04	7,870m <sup>2</sup>
L05	7,028m <sup>2</sup>
L06	6,288m <sup>2</sup>
L07	5,943m <sup>2</sup>
L08	5,943m <sup>2</sup>
L09	5,661m <sup>2</sup>
L10	5,661m <sup>2</sup>
L11	PLANT
L12	155m <sup>2</sup>
TOTAL AREA:	75,123m <sup>2</sup>

LEGEND

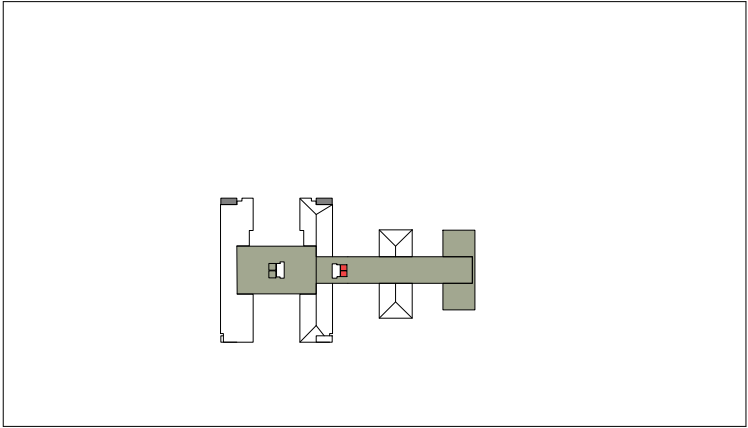
GROSS FLOOR AREA



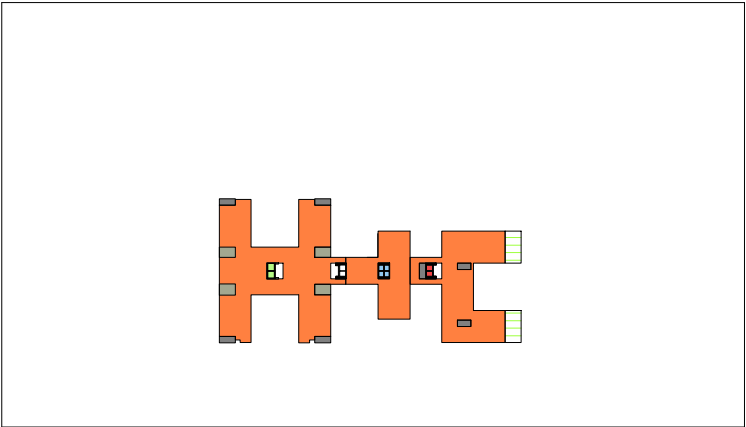
C	ISSUED FOR SSD	30/07/2018	DR
B	ISSUE FOR SSD	25/06/2018	RB
A	ISSUE FOR SSD	19/06/2018	RB
Revision	Description	Date	Initial



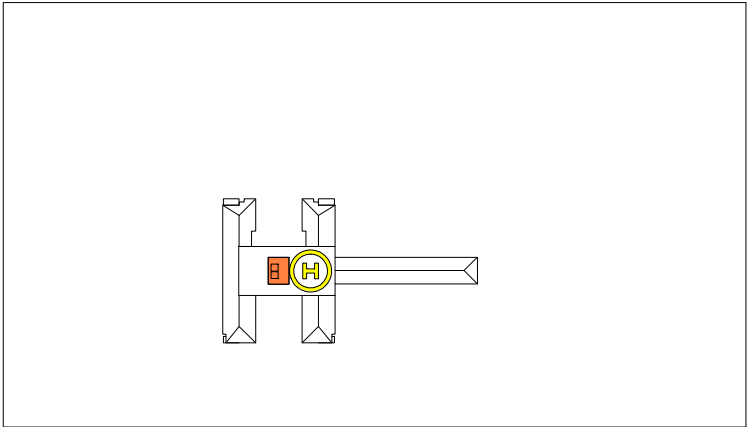
1 PLAN - L08 - GFA (5,943m<sup>2</sup>)  
1 : 4000



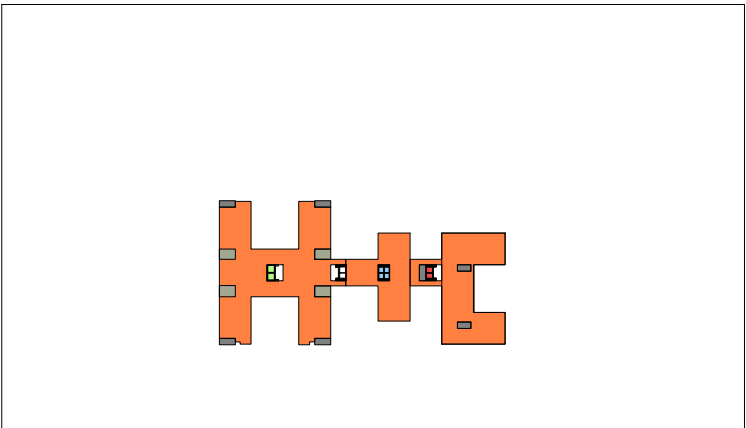
6 PLAN - L13 - GFA (PLANT)  
1 : 4000



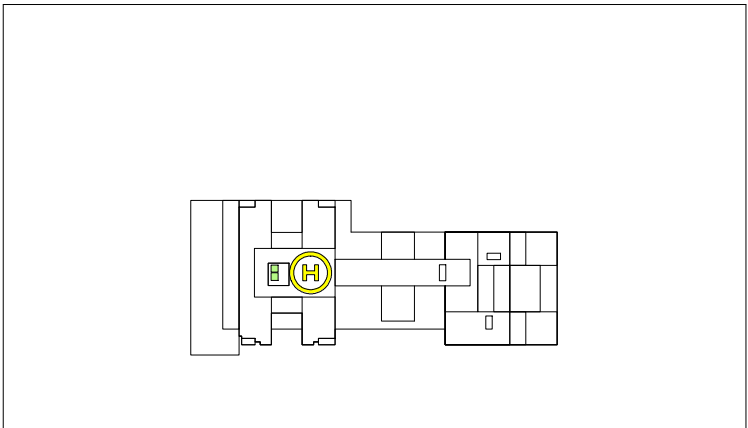
2 PLAN - L09 - GFA (5,661m<sup>2</sup>)  
1 : 4000



7 PLAN - L14 - GFA (155m<sup>2</sup>)  
1 : 4000



3 PLAN - L10 - GFA (5,661m<sup>2</sup>)  
1 : 4000



8 PLAN - L15 - GFA (ROOF)  
1 : 4000

LEVEL	GFA/FLOOR
L00	8,739m <sup>2</sup>
L01	9,022m <sup>2</sup>
L02	8,543m <sup>2</sup>
L03	4,270m <sup>2</sup>
L04	7,870m <sup>2</sup>
L05	7,028m <sup>2</sup>
L06	6,288m <sup>2</sup>
L07	5,943m <sup>2</sup>
L08	5,943m <sup>2</sup>
L09	5,661m <sup>2</sup>
L10	5,661m <sup>2</sup>
L11	PLANT
L12	155m <sup>2</sup>
TOTAL AREA:	75,123m <sup>2</sup>

LEGEND

GROSS FLOOR AREA

C	ISSUED FOR SSD	30/07/2018	DR
B	ISSUE FOR SSD	25/06/2018	RB
A	ISSUE FOR SSD	19/06/2018	RB
Revision	Description	Date	Initial

