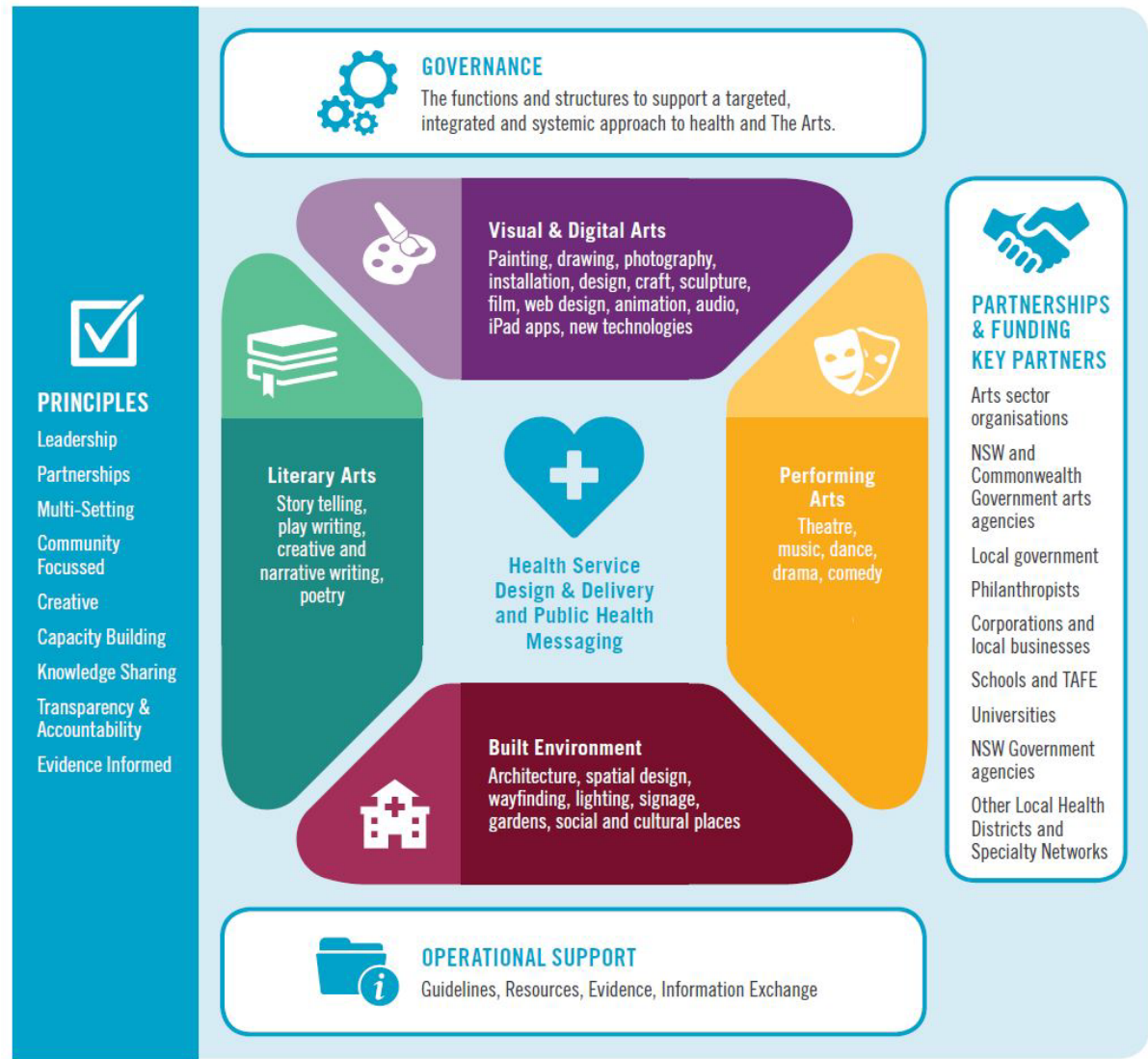


NSW Health and the Arts Framework



NSW Health and the Arts - Diversity of Arts



Art Strategy Objectives

Local cultural heritage and history, including Aboriginal and post European settlement heritage displays and artworks placed with in public areas, both internal and external

Cultural institution engagement
A relationship could be established between the hospital and the Campbelltown Arts Centre. Art work could be loaned to the hospital and placed on display in various fit for purpose areas located throughout the new facility

An art strategy that inputs into site wide wayfinding design
This could involve the development of a graphic language which defines placement and location using a yet to be defined overarching design theme

Campbelltown Hospital heritage display
This could include numerous displays throughout the facility that document the history of health care with in the district. Displays similar to other heritage installations that have recently been installed in public health facilities throughout NSW.

Education and performance activities
The new facility cdesigned to provide suitable space for the purposes of both education and artistic performance. Spaces designated to be shared zones would be utilised. For example, community seminars and music performance could be undertaken at lunchtimes.

“The use of The Arts to improve the health of individuals or communities, as well as health facility design, has a long history both here and internationally, but has become increasingly important in recent years. A growing body of peer-reviewed evidence confirms signifcant and measurable benefs from the integration of health and The Arts.”

role of the arts in healing
arts strategies and community engagement

There is a great opportunity available that can allow the hospital to engage with the various established community and cultural institutions that exist within the Campbelltown and Macarthur region. This creative and cultural collaboration has the potential to provide for a greater sense of community, engagement and positive wellbeing for generations to come.

Mount Annan Botanical Garden

The Mount Annan botanical garden facility, located directly west of Campbelltown, has been identified as a possible community partner in the redevelopment of the Campbelltown Hospital. This institution provides science and educational services as well as recreational facilities for use by the general public. Mount Annan forms part of a network of botanical gardens that includes facilities located in Sydney (Farm Cove) and the Blue Mountains (Mount Tomah).

The proposed redevelopment of Campbelltown Hospital will include landscaped courtyards and terrace areas. It is intended that these areas be designed to incorporate significant planting designs. It is envisaged that professional services available at the Mount Annan facility could assist in the design development as well as longer term maintenance of the proposed landscape spaces.



'The Blue Tree', Mount Annan Botanical Gardens
Mount Annan Botanical Gardens



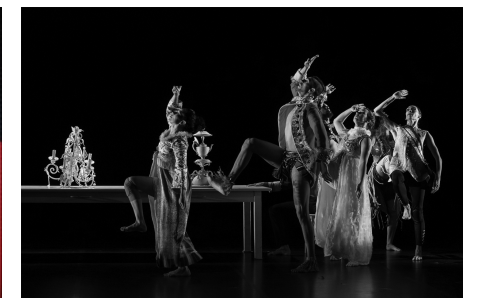
Tharawal Local Aboriginal Land Council

Campbelltown's Aboriginal community is represented by the Tharawal Local Aboriginal Council. This organisation provides services to the local community with specific emphasis upon community health and education services. Through the arts and community engagement strategy, it is envisaged that the Tharawal Aboriginal Council could be engaged to provide invaluable advice and assistance with regards to the Campbelltown Hospital redevelopment project. Areas that the Tharawal Aboriginal Council could assist with include:

- Assistance and advice with regard to exhibition and performance space
- Welcome to Country ceremonies
- Input into the design of landscape and selection of plants in outdoor areas
- Knowledge of the history of medicinal planting and its application with regards to general wellbeing and healthcare.



Tharawal Local Aboriginal Land Council Flag
Bangara Ensemble - 'MacQ, Our Land People Stories



role of the arts in healing
arts strategies and community engagement