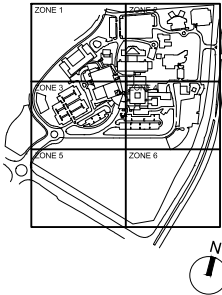


- THIS PLAN IS FOR GUIDANCE ONLY.
- SITE MANAGER TO INSTALL SEDIMENT AND EROSION CONTROL MEASURES IN ACCORDANCE WITH LANDCOM - MANAGING URBAN STORMWATER "BLUE BOOK" GUIDANCE, TO COMPLEMENT SELECTED CONSTRUCTION METHODS AND STAGING.

02	40% ISSUE FOR INFORMATION	MD	25/05/18
01	ISSUE FOR INFORMATION	MD	21/05/18
REV	AMENDMENT	BY	DATE

KEY PLAN



KEY PLAN IS NOT TO SCALE

MECHANICAL SERVICES

ARUP

Arup Pty Ltd
T +61 2 9320 9320
www.arup.com
sydney@arup.com
Level 10, 201 Kent Street
Sydney, NSW 2000

**Donnelley Simpson
Cleary Consulting
Engineers Pty Ltd**
T +61 2 9416 1177
www.dsc.com.au
mail@dsc.com.au
59 Hill Street
Roseville, NSW 2069

enstruct

**Enstruct Group
Pty Ltd**
T +61 2 8904 1444
www.enstruct.com.au
sydney@enstruct.com
Level 4, 2 Glen Street
Milsons Point, NSW 2061

JHA

**JHA Consulting
Engineers Pty Ltd**
T +61 2 9437 1000
www.jhaservices.com
enquiries@jhaengineers.com.au
Level 23, 101 Miller Street
North Sydney, NSW 2060

ROOT PARTNERSHIPS
Advisory+
Project Management

**Root Partnerships
Pty Ltd**
T +61 2 8272 9334
www.rootpartnerships.com.au
@rootpartnerships.com.au
Level 2, 14 Martin Place
Sydney, NSW 2000

**Billard Leece
Partnership Pty Ltd**
Architects & Urban Planners
Studio 201, 50 Holt Street
Surry Hills 2010
NSW Australia
T +61 2 8096 4066
F +61 3 9656 5050
E info@blp.com.au
www.blp.com.au

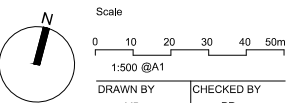
Health Infrastructure
NSW



T +61 2 9978 5402
www.hinfra.health.nsw.gov.au
Level 14, 77 Pacific Highway
North Sydney, NSW 2060

PROJECT NAME
CAMPBELLTOWN
HOSPITAL REDEVELOPMENT

DESCRIPTION
EROSION AND SEDIMENT CONTROL PLAN FOR ROADS - ZONE 5



	DRAWN BY MD	CHECKED BY PR
PROJECT NUMBER 5582	REVISION DATE 21/05/2018	

DRAWING STATUS

FOR INFORMATION ONLY

DRAWING NUMBER

CHR-ENS-CV-DWG-Z05-0411 02

