



CLOUSTON associates



Landcom
TALLAWONG STATION PRECINCT SOUTH
Public Domain and Landscape Strategy
RESPONSE TO SUBMISSIONS SUPPLEMENT

S17-0100
Issue D • 02/11/2018



Cover Image:
Artist impression of Tallawong Station Precinct South - Station Plaza (Source: Virtualideas)

Inside Cover:
Artist impression of Tallawong Station Precinct South - Cul de Sac Plaza (Source: Virtualideas)



CLOUSTON associates
TALLAWONG
STATION PRECINCT SOUTH
PUBLIC DOMAIN AND LANDSCAPE STRATEGY
RESPONSE TO SUBMISSIONS SUPPLEMENT

Client:
Landcom



Prepared by

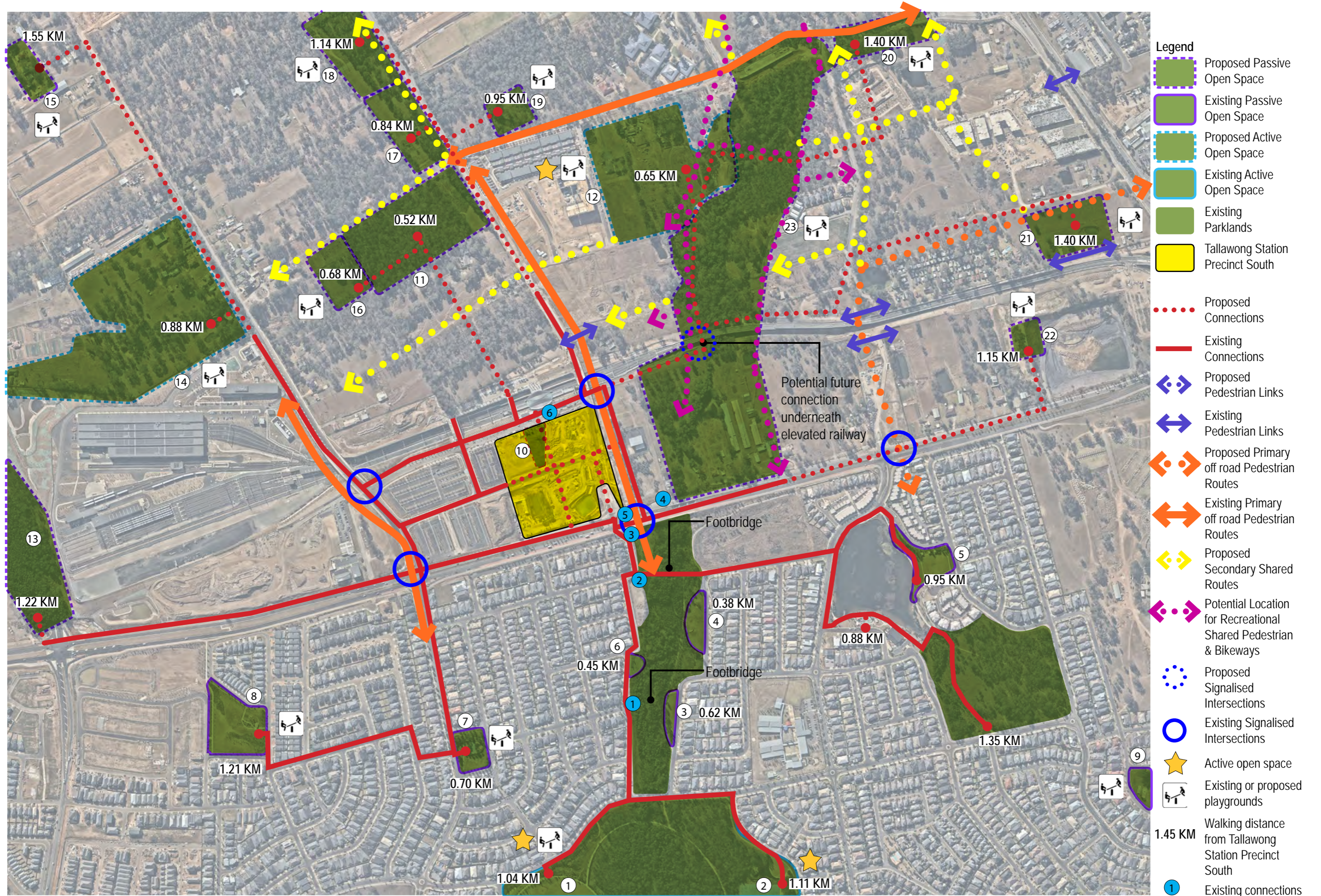
CLOUSTON Associates
Landscape Architects • Urban Designers • Landscape Planners
65-69 Kent Street • Sydney NSW 2000
PO Box R1388 • Royal Exchange NSW 1225 • Australia
Telephone +61 2 8272 4999 • Facsimile +61 2 8272 4998
Contact: Crosbie Lorimer
Email • sydney@clouston.com.au
Web • www.clouston.com.au

Document	Issue	Date	Status	Reviewed	Verified	Validated
S17-0100 R02	A	25/10/2018	FINAL	CC	JH	-
S17-0100 R02	B	25/10/2018	FINAL	CC	JH	-
S17-0100 R02	C	01/11/2018	FINAL	CC	JH	-
S17-0100 R02	D	02/11/2018	FINAL	CC	JH	-

TABLE OF CONTENTS

Title	page
DISTRICT OPEN SPACE CONNECTIONS	2
REVISED MASTER PLAN	4
REVISED COMMUNAL OPEN SPACE	6
REVISED STREET SECTIONS	8
REVISED PARK CONCEPT DESIGN AND SECTIONS	12
REVISED PARK SPATIAL ARRANGEMENTS	16
REVISED PARK CONNECTIONS	17
STREET TREE MASTER PLAN AND INDICATIVE STREET TREE PLANTING DETAILS	18





DISTRICT OPEN SPACE CONNECTION

OPEN SPACE IN THE DISTRICT CONTEXT

The parks/ open space named in Figure A1 are within 2 km walking distance from the proposed development. They offer the following existing recreation facilities and opportunities: (Source: Social Needs and Impact Study, GHD and Nemap)

No.	Name	Active/ Passive	SIZE	FACILITIES
1	Peel Reserve Park	Active and Passive	4.38 ha	Children's playground, outdoor fields, softball field, exercise station
2	Jonas Bradley Park	Active and Passive	3.80 ha	Picnic shelters, BBQs, tennis courts, playground, soccer fields, basketball & netball, exercise stations
3	Greenview Park	Passive	0.14 ha	Pocket park
4	Arrowroot Park	Passive	0.37 ha	Pocket park
5	Lakes Edge Park	Passive	0.75 ha	Picnic shelters, BBQs, toilets, near bushland with walking trails, Lake Ironbark
6	Tanundra Park	Passive	0.08 ha	Pocket park
7	Kalina Reserve Park	Passive	0.46 ha	Children's playground
8	Second Ponds Playground	Passive	1.22 ha	Children's playground/ Kickabout open space
9	Glenheath Park	Passive	0.59 ha	Children's playground/ Kickabout open space & Picnic shelters
10	Tallawong Station Pricent South Town Park	Passive	0.34 ha	Shelters, open lawns, kiosk and water element
11^	Cudgegong Reserve Code: 260	Passive	4.04 ha	Cudgegong Reserve including cycleway, fencing and landscaping
12*	Second Ponds Creek Corridor Park Code: 945	Active and Passive	6.32 ha	Active reserve including playing field, amenities, lighting, car park, playground, pathway, fencing and landscaping
13*	Name: TBC Code: 1043	Passive	4.02 ha	Corridor park including pathway, fencing, cycleway and landscaping
14*	Name: TBC Code: 1045	Active and Passive	9.70 ha	Active reserve including playing field, amenities, lighting, car park, playground, pathway, fencing and landscaping
15*	Name: TBC Code: 1048	Passive	0.74 ha	Local park including playground and landscaping
16*	Name: TBC Code: 1046	Passive	0.83 ha	Local park including pathway, playground and landscaping
17*	Name: TBC Code: 1047	Passive	2.15 ha	Local park including pathway, fencing, seating and landscaping
18*	Name: TBC Code: 1044	Passive	1.17 ha	Local park including pathway, fencing, playground and landscaping
19*	Name: TBC Code: 940	Passive	0.57 ha	Local park including playground and landscaping

No.	Name	Active/ Passive	SIZE	FACILITIES
20*	Name: TBC Code: 943	Passive	1.05 ha	Neighbourhood park including playground, pathway and landscaping
21*	Name: TBC Code: 949	Passive	1.38 ha	Neighbourhood park including playground, pathway, fencing and landscaping works
22*	Name: TBC Code: 1071	Passive	0.35 ha	Local Park including playground and landscaping
23*	Second Ponds Creek Corridor Parks Code: 944/ 946/ 947 948	Passive	Total: 8.30 ha	Corridor park including playground, cycleway and landscaping

*Refer to Section 94 Contributions Plan No. 22W - Rouse Hill (Works) Page 46-48.



GANSW OPEN SPACE FOR RECREATION GUIDE

The Draft Open Space for Recreation Guide 2018 by Government Architect New South Wales indicates the following performance criteria for open space distribution, size and shape.

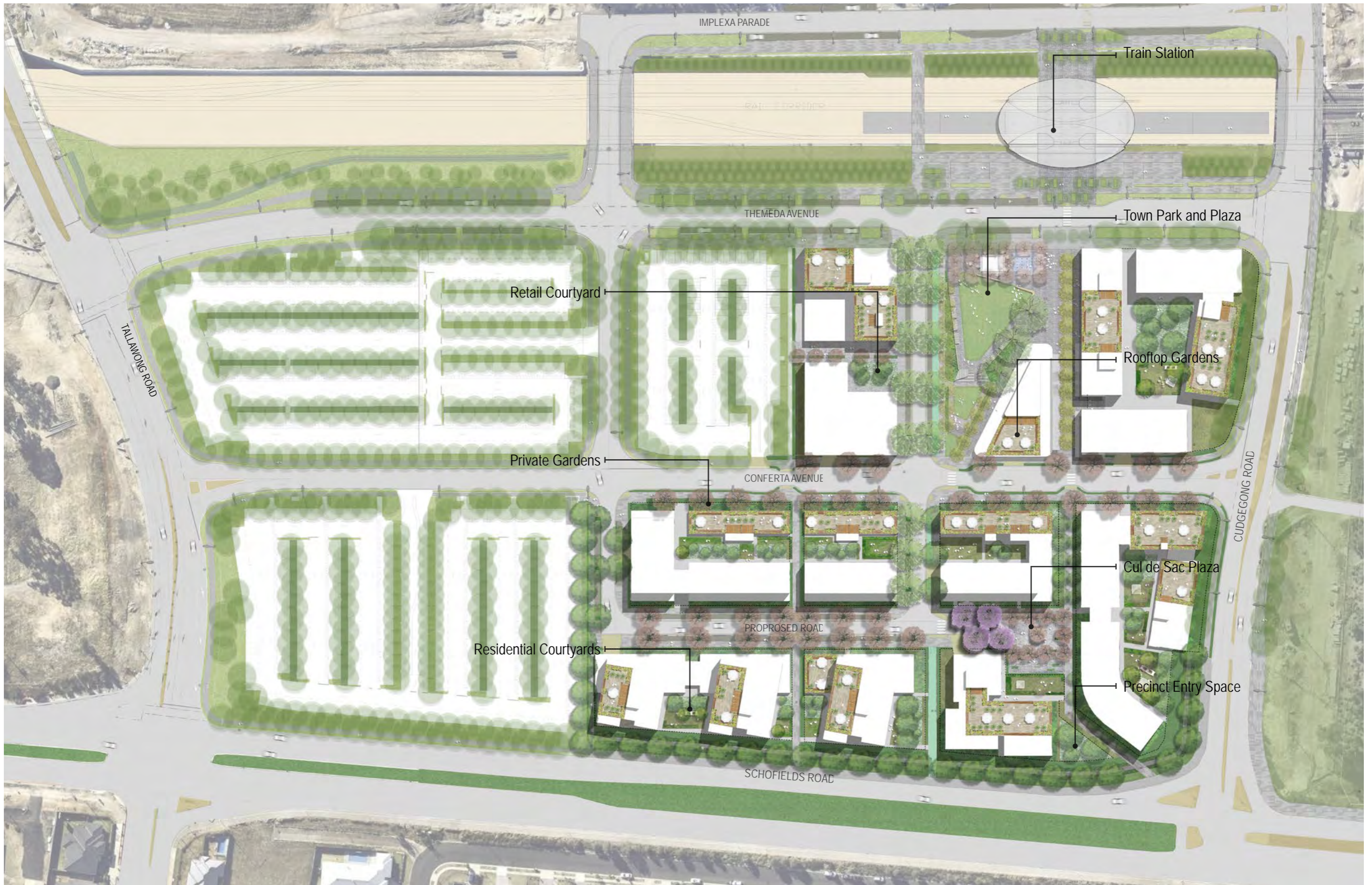
Distribution- Distance of open space from houses by size

- Regional open spaces (>5 ha) 5-10 km
- District open spaces (2-5 ha) 2 km
- Local open space (0.5-2 ha) 400 m
- For high-density areas, local open space (0.1-0.5 ha) 200m
- Distance of open space from workplaces 400 m
- Distance of open space from schools 400 m

Size and shape

- Desirable minimum size of a local park is 3000 m2
- In high-density areas, parks may be as small as 1500 m2 where more efficient provision does not exist or opportunities for re-use of small spaces arise
- Road frontage and visibility are key considerations
- Sporting facilities also have specific size and shape requirements that need to be met to provide functional space for their use.







KEY PLAN



LEGEND

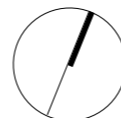
-  VERGE / PUBLIC LANDSCAPE AREA
-  COMMUNAL OPEN SPACE
-  DEEP SOIL ZONE
-  PRIVATE GARDENS
-  ROOFTOP GARDENS
-  PLAZA PAVEMENT
-  PUBLIC DOMAIN PAVEMENT
-  DEDICATED CYCLEWAY
-  TREES BY OTHERS
-  PROPOSED FENCE / GATES WHERE REQUIRED
-  PRIVATE WITH PUBLIC EASEMENT
-  *Fraxinus oxycarpa* 'Raywoodii'
-  *Jacaranda mimosifolia*
-  *Eucalyptus tereticornis*
-  *Eucalyptus microcorys*
-  *Sapium sebiferum*



Client:
Landcom

1:500 @A3

0 5 10 15 25m



TALLAWONG STATION PRECINCT SOUTH

DETAILED MASTERPLAN AREA 1

PAGE 5

02/11/2018



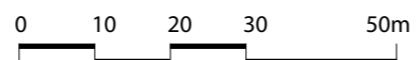
LEGEND

- COMMUNAL OPEN SPACE
- COMMUNAL OPEN SPACE
RECEIVING >2HR SUN (21ST JUNE 9AM-3PM)
- PRIVATE GARDEN
- DEEP SOIL ZONE



Client:
Landcom

1:1000 @A3



TALLAWONG STATION PRECINCT SOUTH

COMMUNAL OPEN SPACE DIAGRAM

PAGE 6

02/11/2018



Artist impression of Tallawong Station Precinct South - 3D view (Source: Virtualideas)



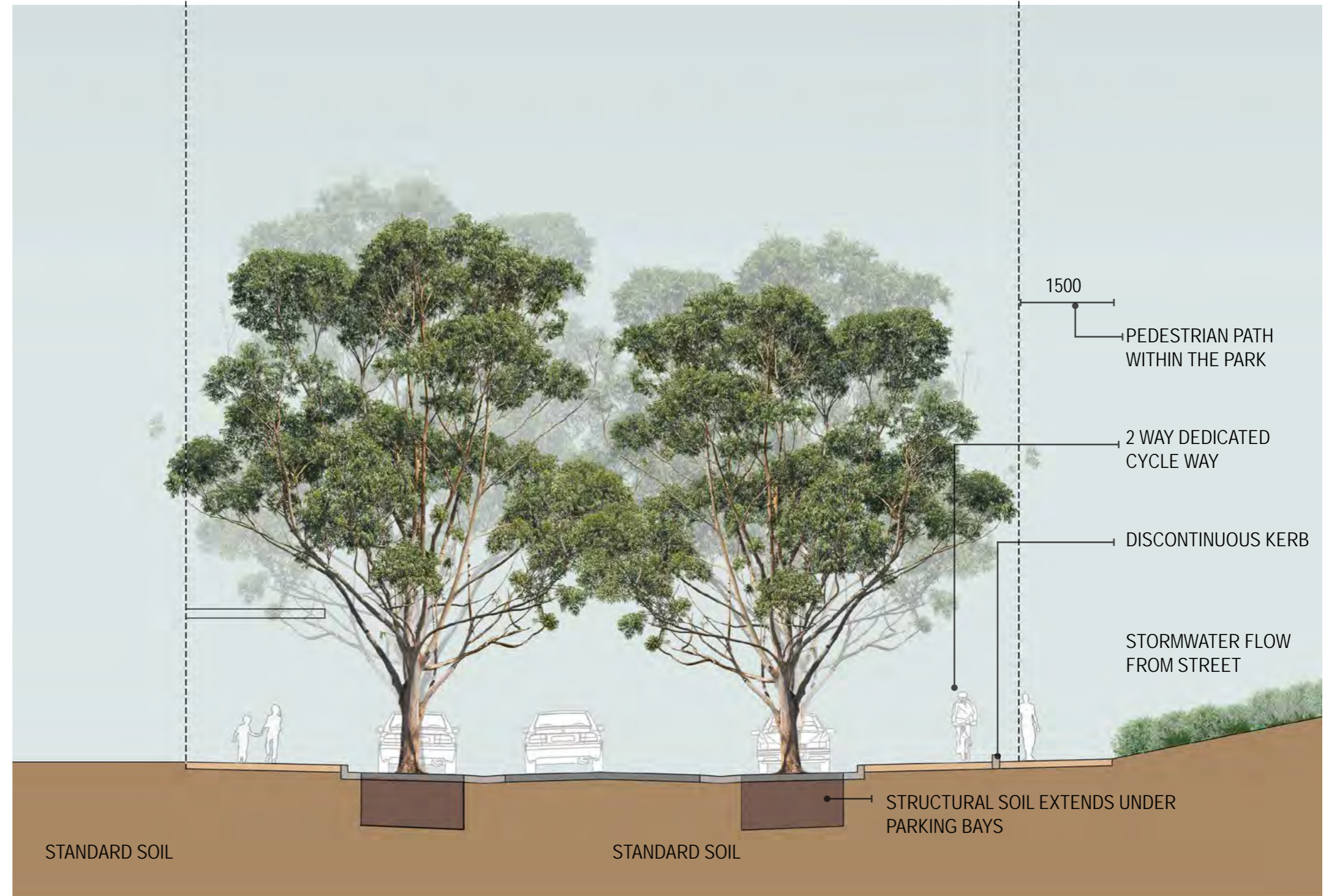
PRIVATE LAND

FUTURE COUNCIL OWNED LAND (STREET)

COUNCIL OWNED LAND (PARK)

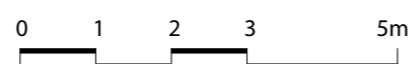


3100



Client:
Landcom

1:100 @A3

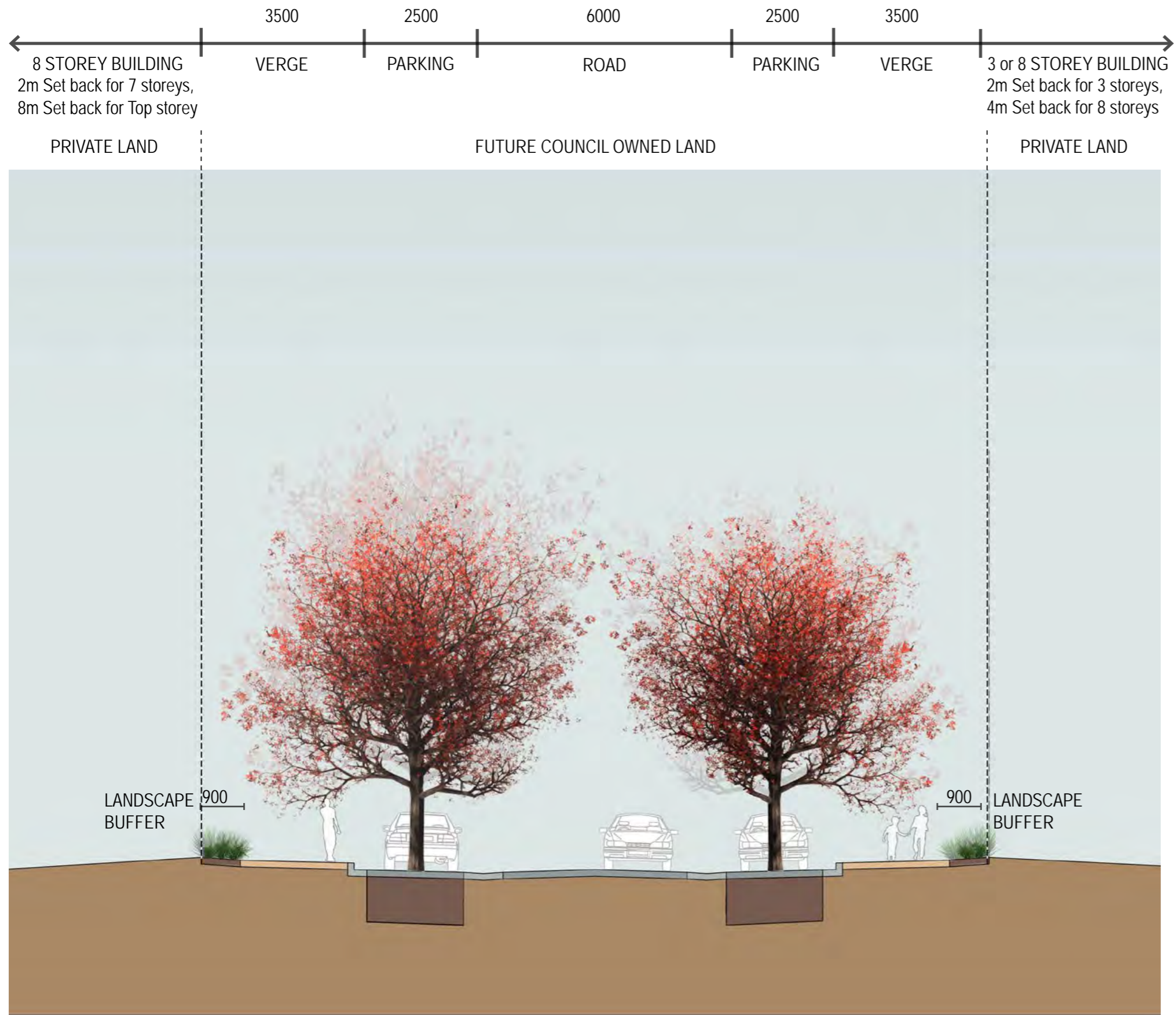


TALLAWONG STATION PRECINCT SOUTH

SECTION AA

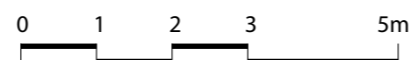
PAGE 8

02/11/2018



Client:
Landcom

1:100 @A3

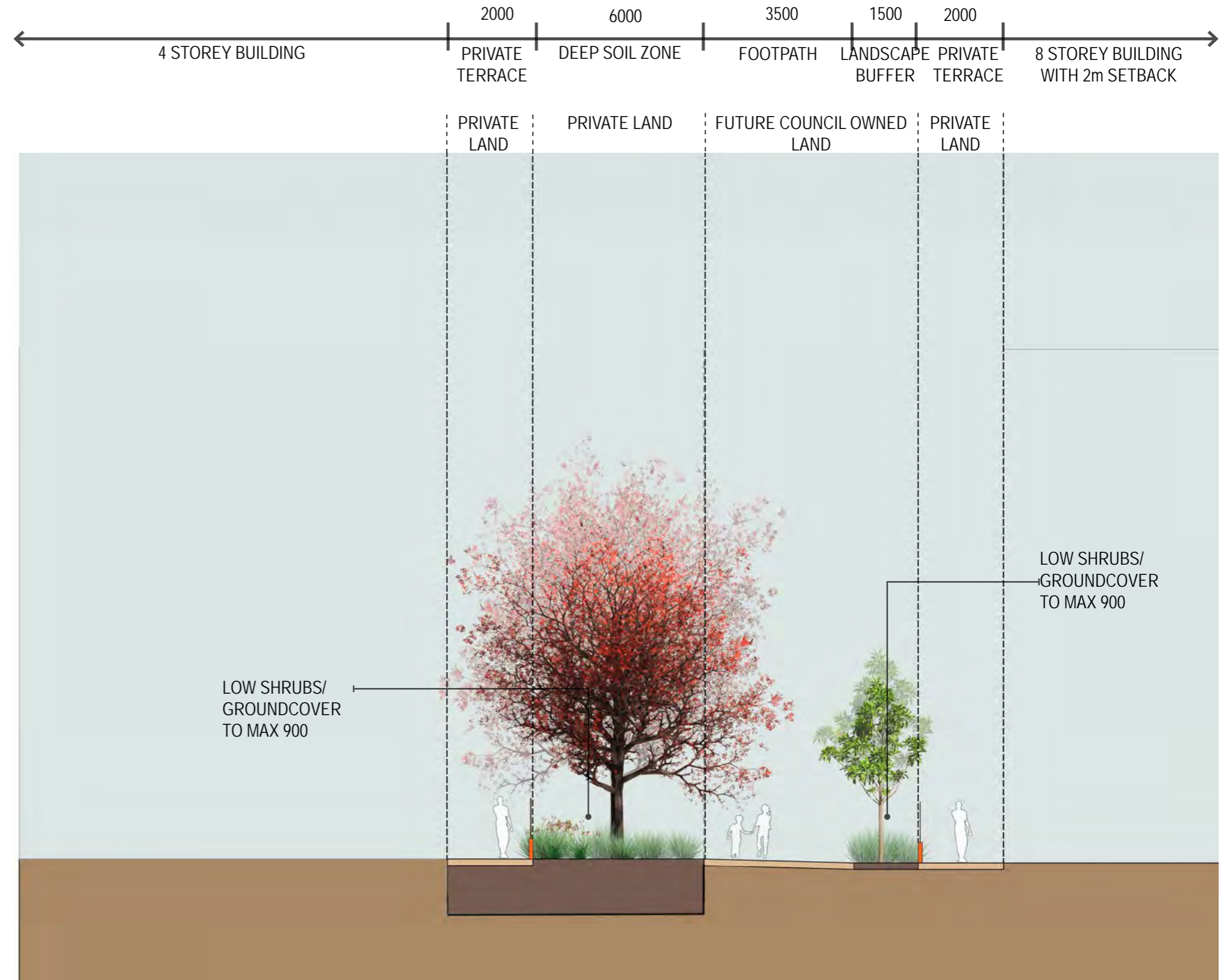


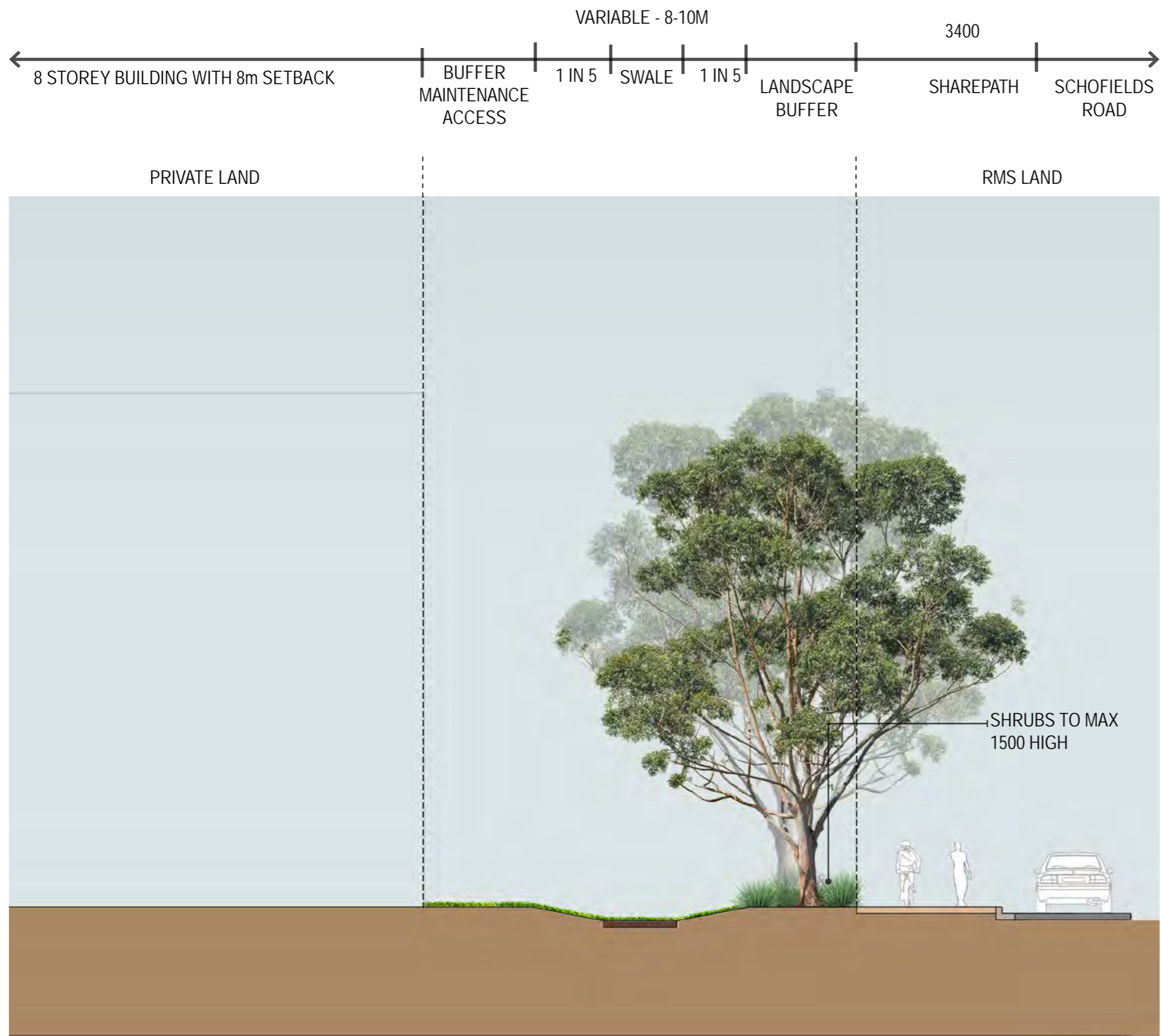
TALLAWONG STATION PRECINCT SOUTH

SECTION BB

PAGE 9

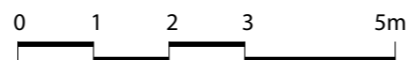
02/11/2018





Client:
Landcom

1:100 @A3



TALLAWONG STATION PRECINCT SOUTH

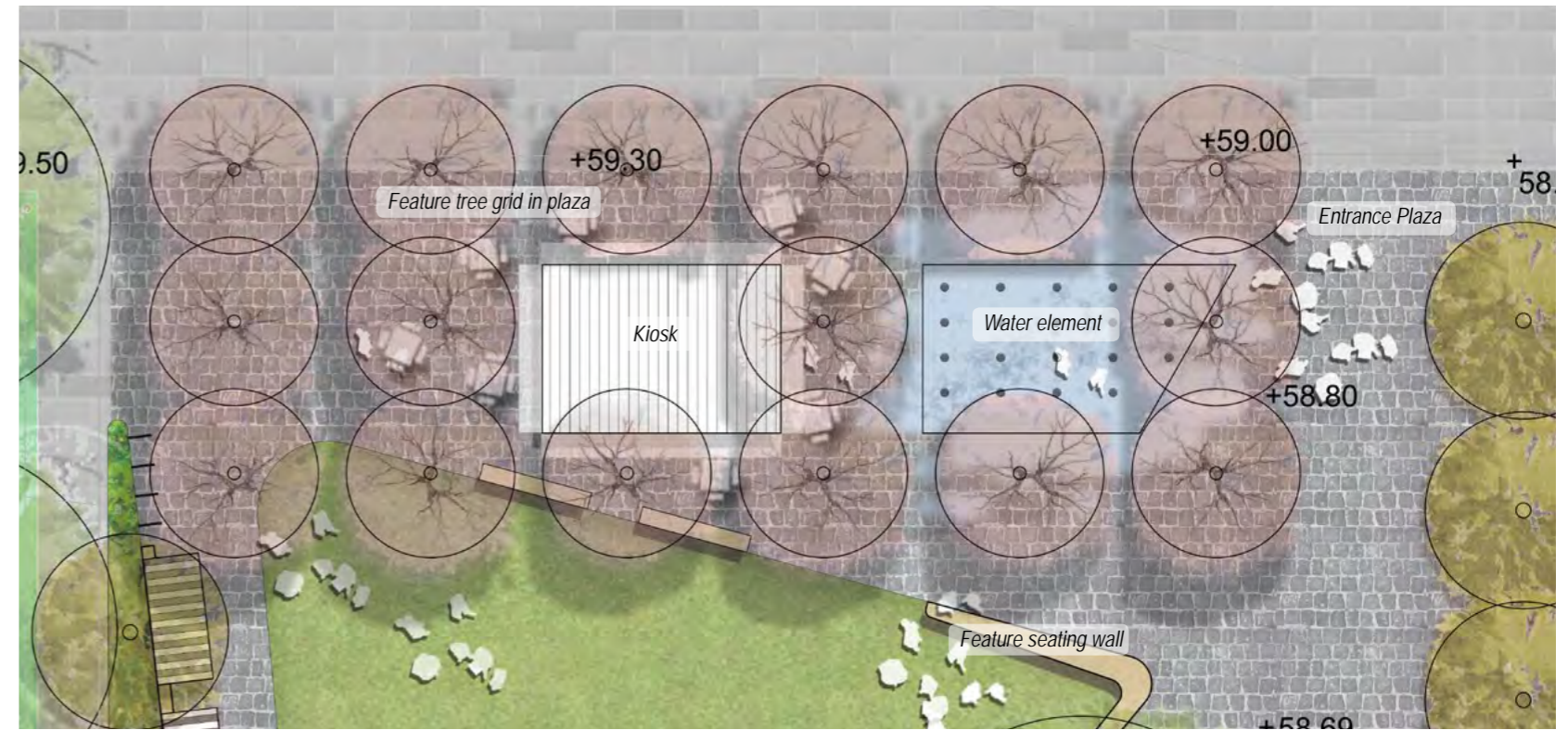
SECTION DD

PAGE 11

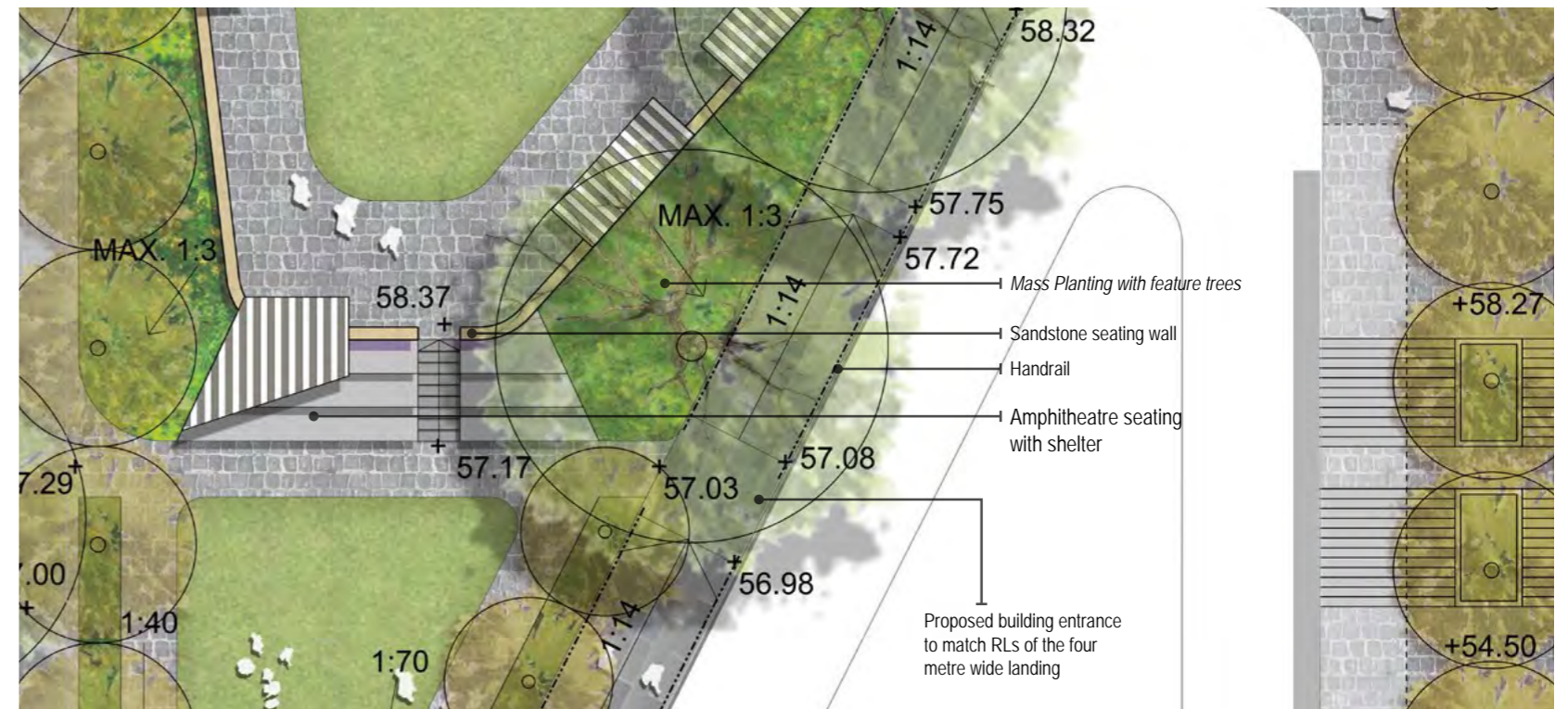
02/11/2018



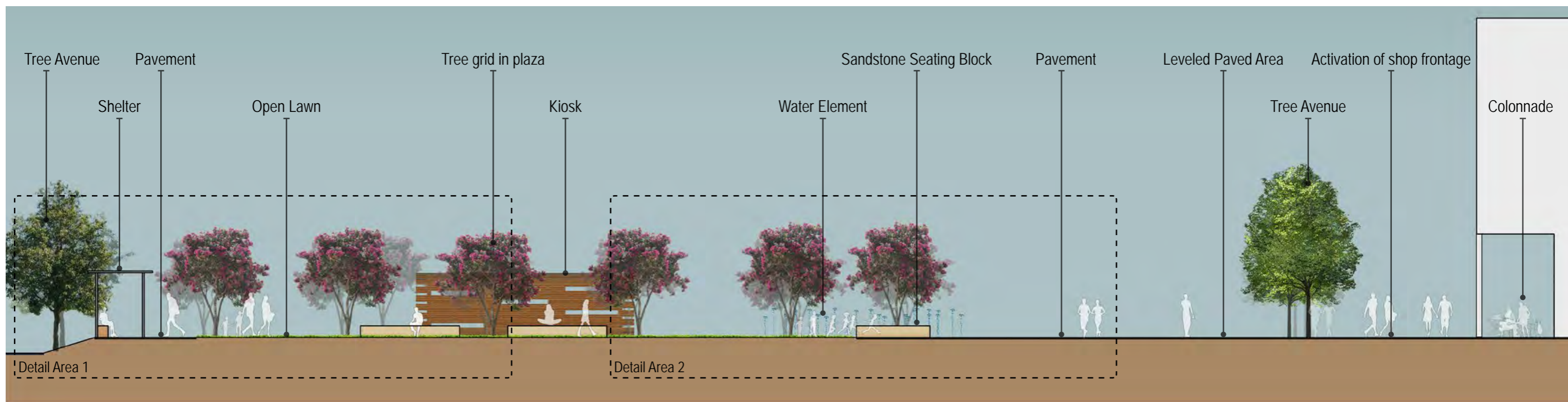
OVERALL CONCEPT 1:500 @ A3



DETAILED PLAN 1:250 @ A3



DETAILED PLAN 1:250 @ A3



SECTION AA 1:150 @ A3



DETAIL AREA 1, 1:75 @A3



DETAIL AREA 2, 1:75 @A3



Client:
Landcom

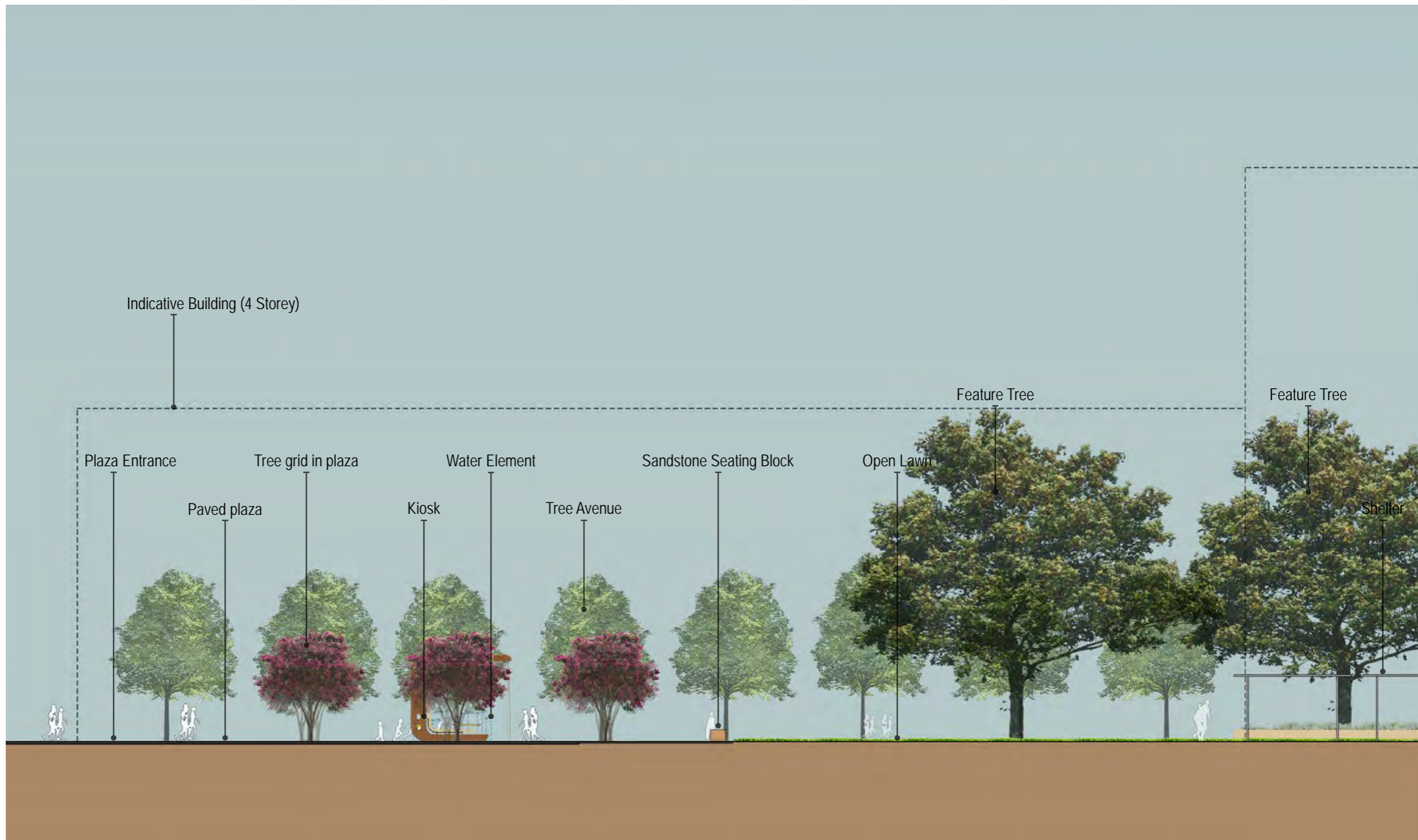
LANDSCAPE ARCHITECTS • URBAN DESIGNERS • LANDSCAPE PLANNERS 65-69 KENT STREET • SYDNEY NSW 2000 • PO BOX R1388 • ROYAL EXCHANGE NSW 1225 • sydney@clouston.com.au • TELEPHONE +61 2 8272 4999 • FACSIMILE +61 2 8272 4998

TALLAWONG STATION PRECINCT SOUTH

OPEN SPACE CONCEPT - SECTIONS

PAGE 13

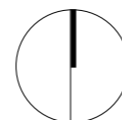
02/11/2018



SECTION BB 1:150 @ A1



Client:
Landcom

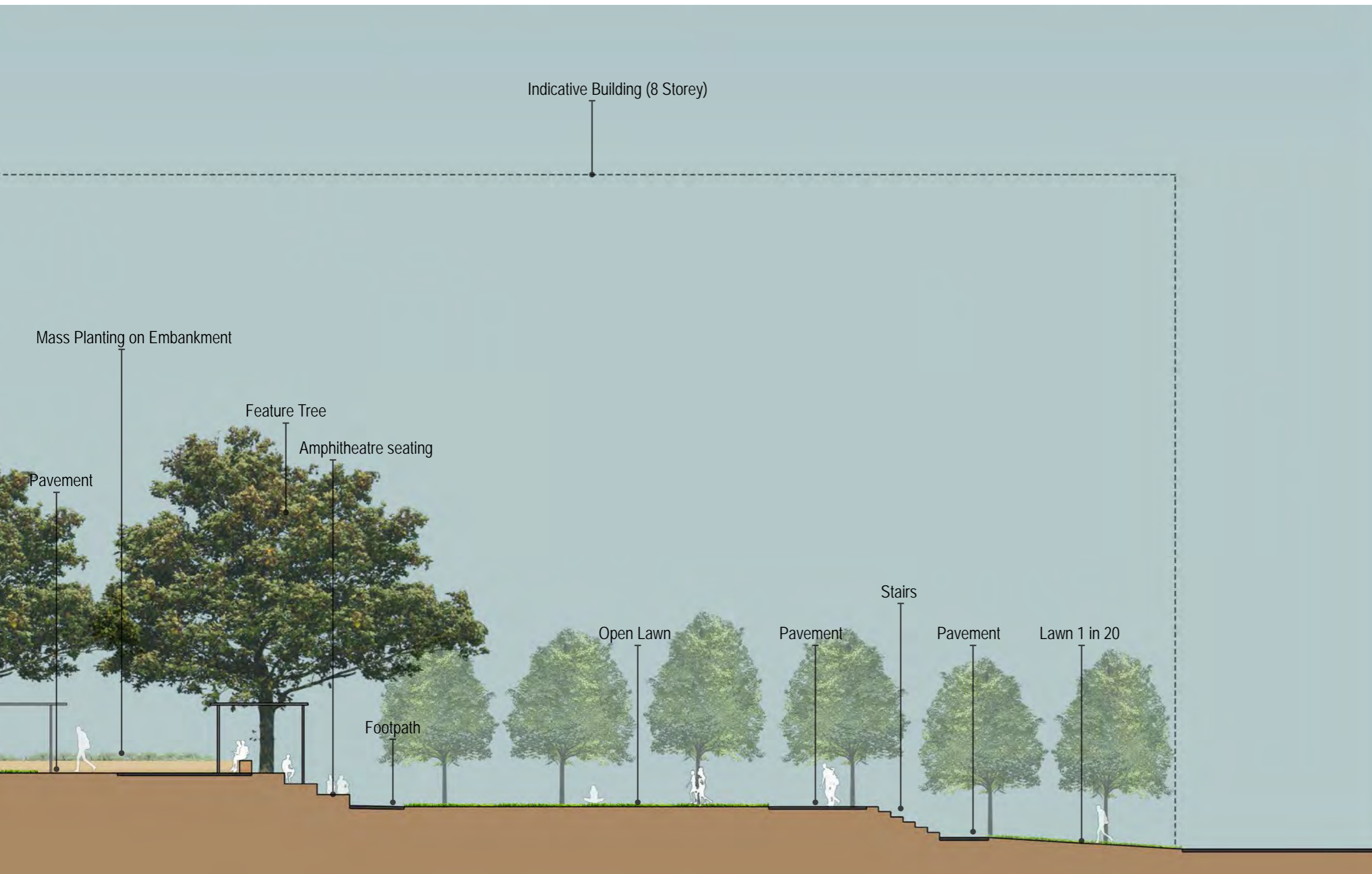


TALLAWONG STATION PRECINCT SOUTH

OPEN SPACE CONCEPT - SECTION

PAGE 14

02/11/2018



Client:
Landcom

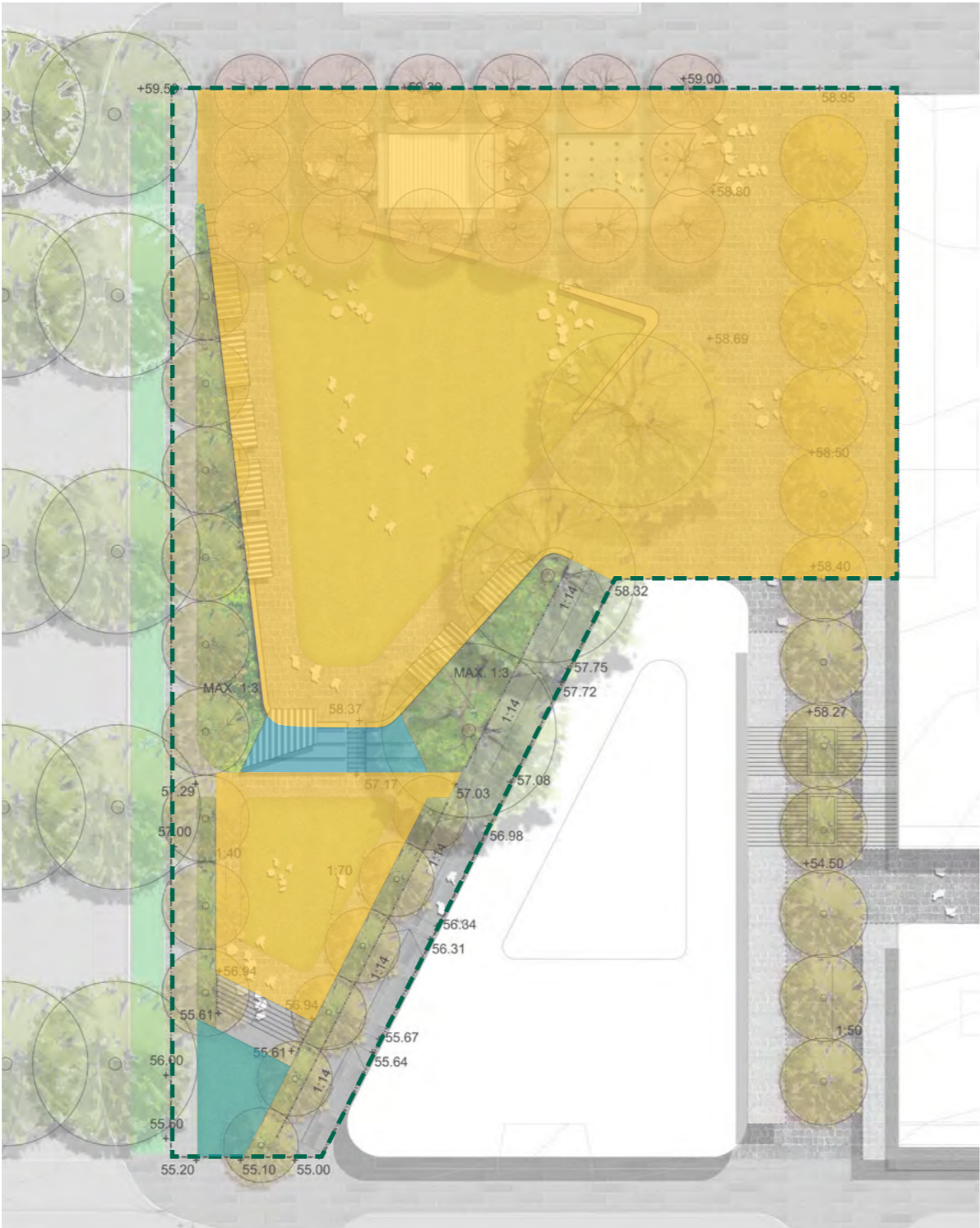
TALLAWONG STATION PRECINCT SOUTH

OPEN SPACE CONCEPT - SECTION

PAGE 15

02/11/2018

PARK SPATIAL ARRANGEMENTS



LEGEND

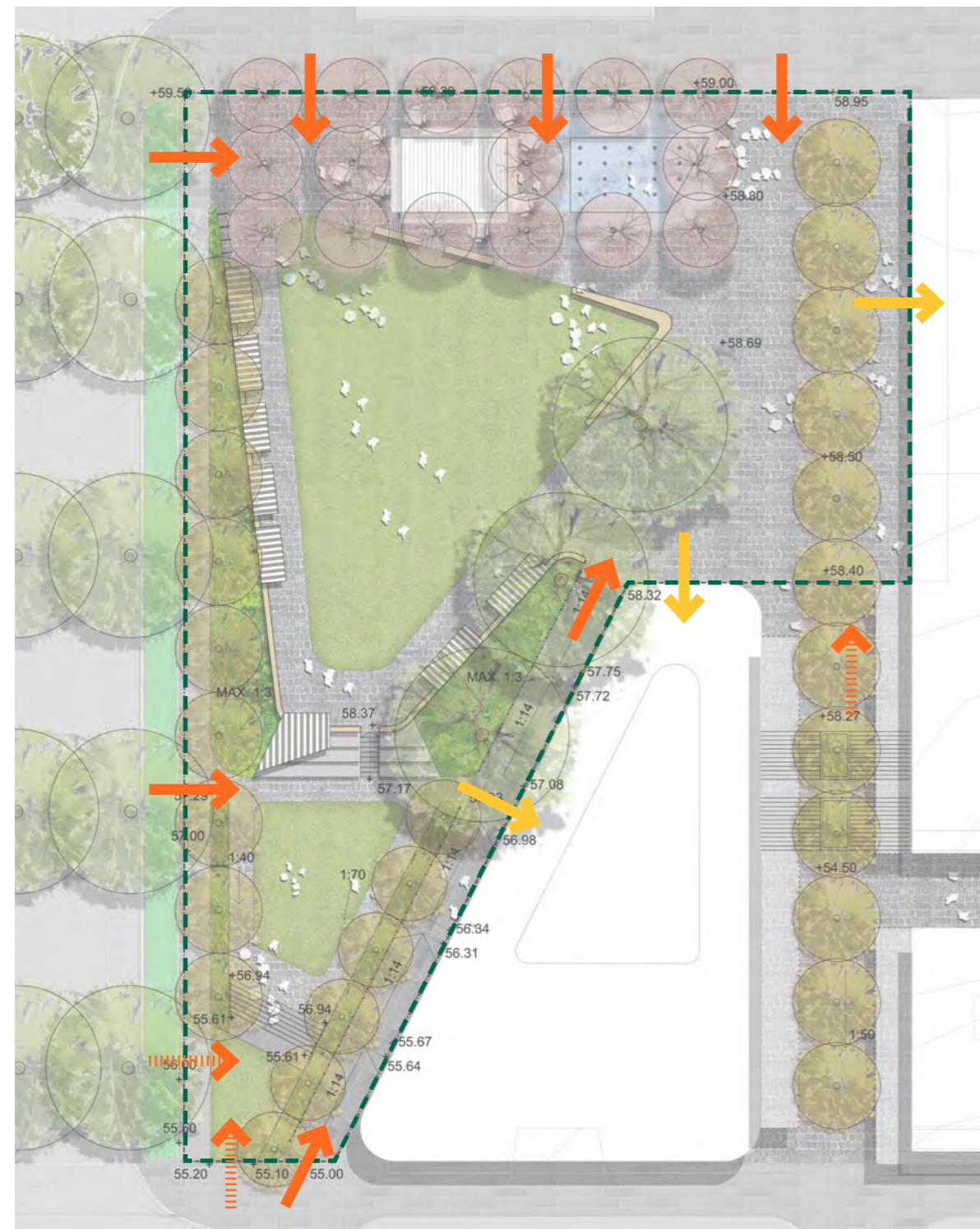
Total town park area:
3,411m² (100%)

Level usable area:
2,478m² (72.7%)



Non level usable area:
104m² (3%)

Non usable area such as
ramps, footpath and mass
planting area:
829m² (24.3%)

PARK CONNECTION TO ADJACENT PUBLIC DOMAIN AND BUILDINGS



LEGEND

-  Universal access to town park
-  Entry to town park
-  Universal access to buildings

STREET TREE MASTERPLAN

A streetscape landscape plan is prepared, see figure 13.1. The plan shows proposed street trees in the Tallawong Station Precinct South with existing trees done by NRT around the train station and commuter car park.

The following street tree species will be proposed:

- *Buckinghamia celsissima*
- *Ulmus parvifolia*
- *Brachychiton populneus*
- *Nyssa sylvatica*
- *Angophora floribunda*
- *Fraxinus oxycarpa* 'Raywoodii'
- *Flindersia australis*



Buckinghamia celsissima



Ulmus parvifolia



Brachychiton populneus



Nyssa sylvatica



Angophora floribunda

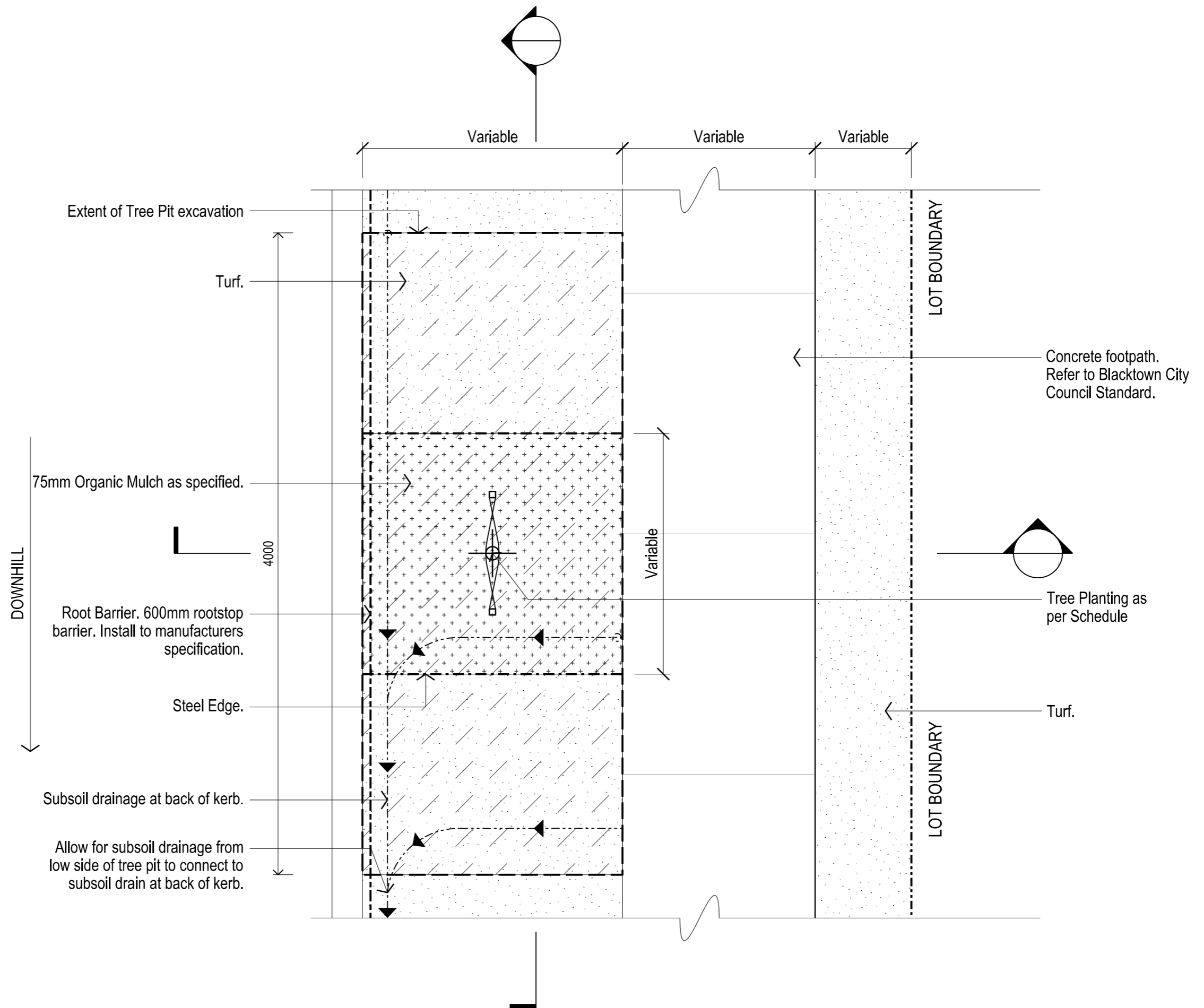


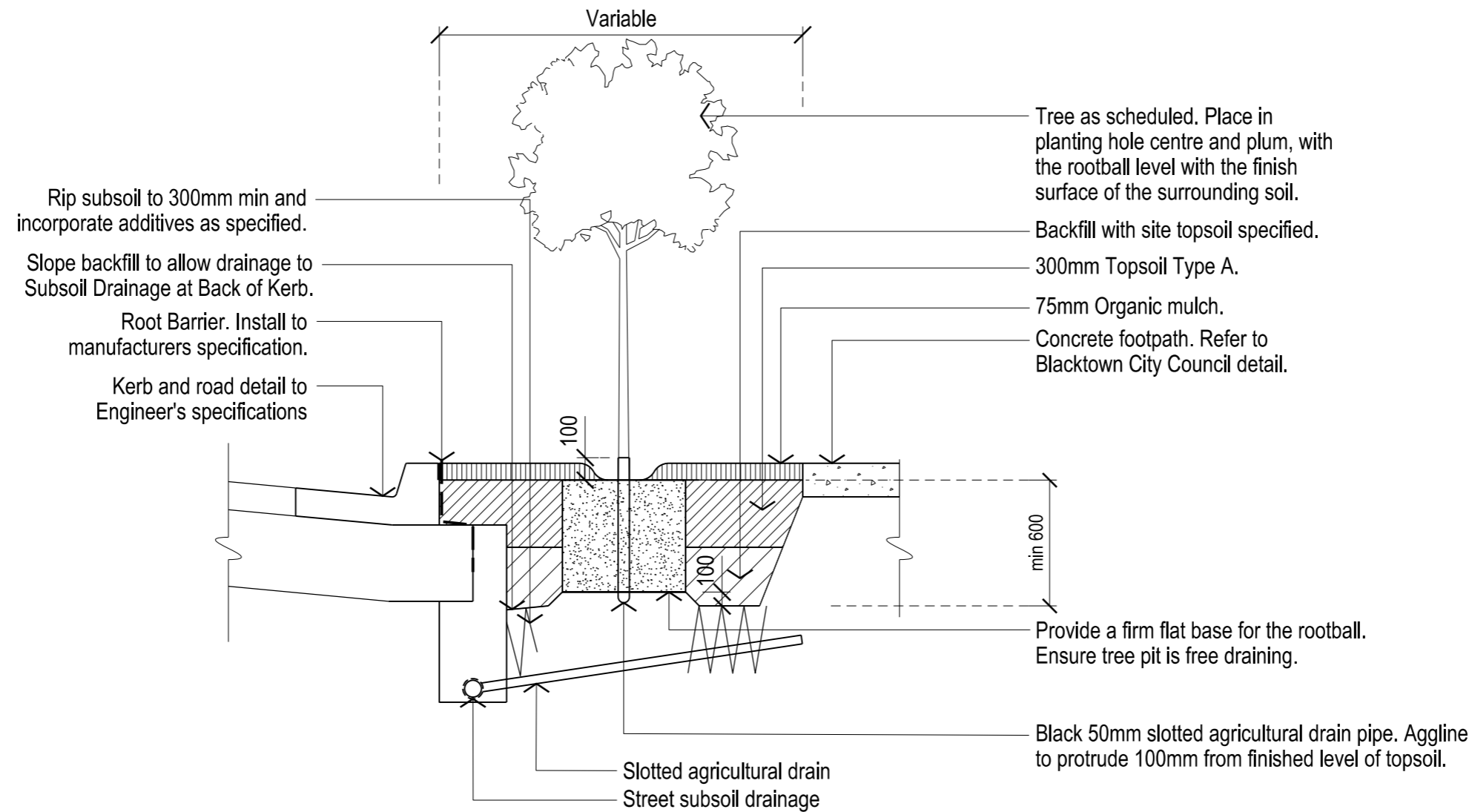
Fraxinus oxycarpa 'Raywoodii'

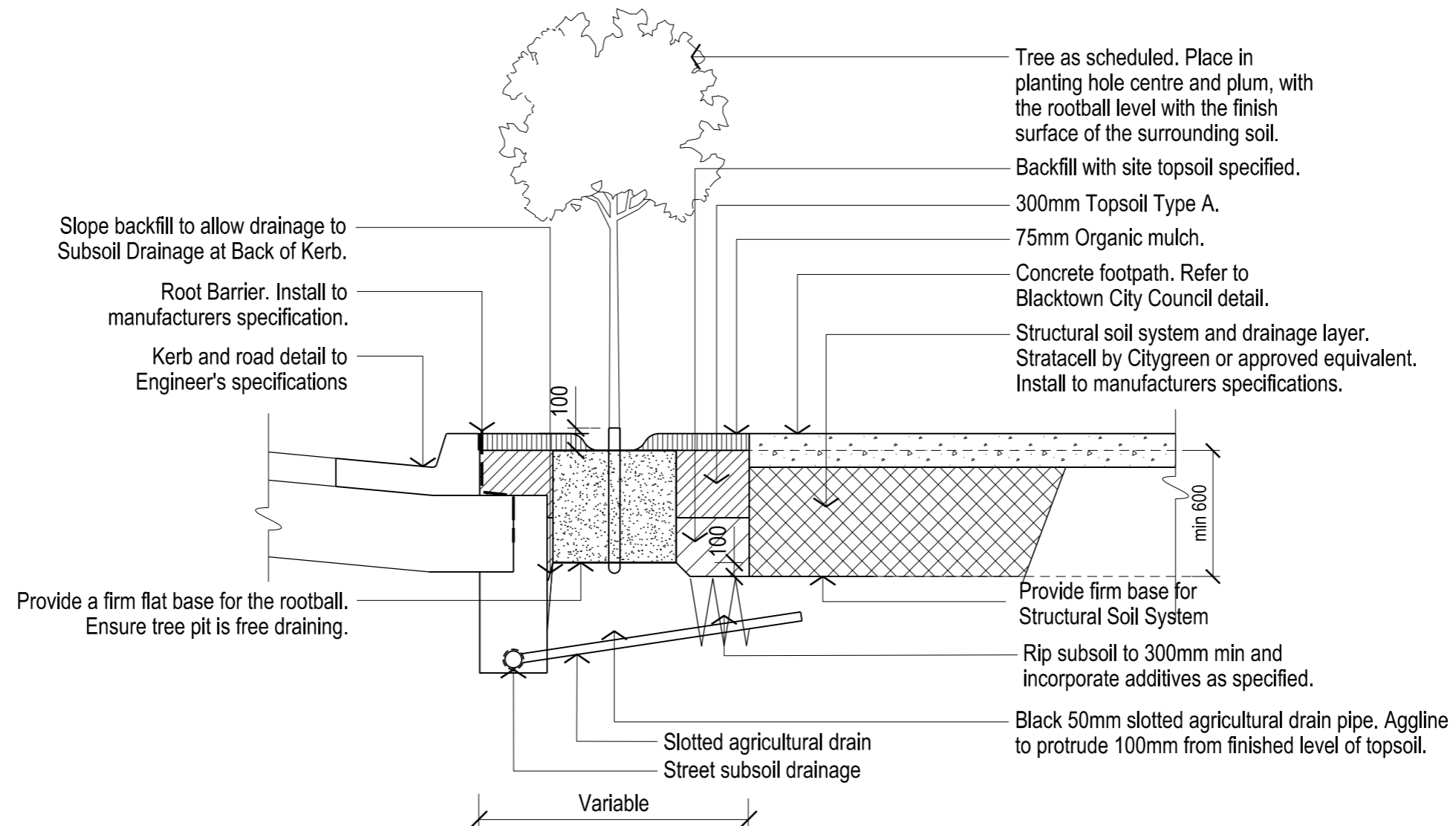


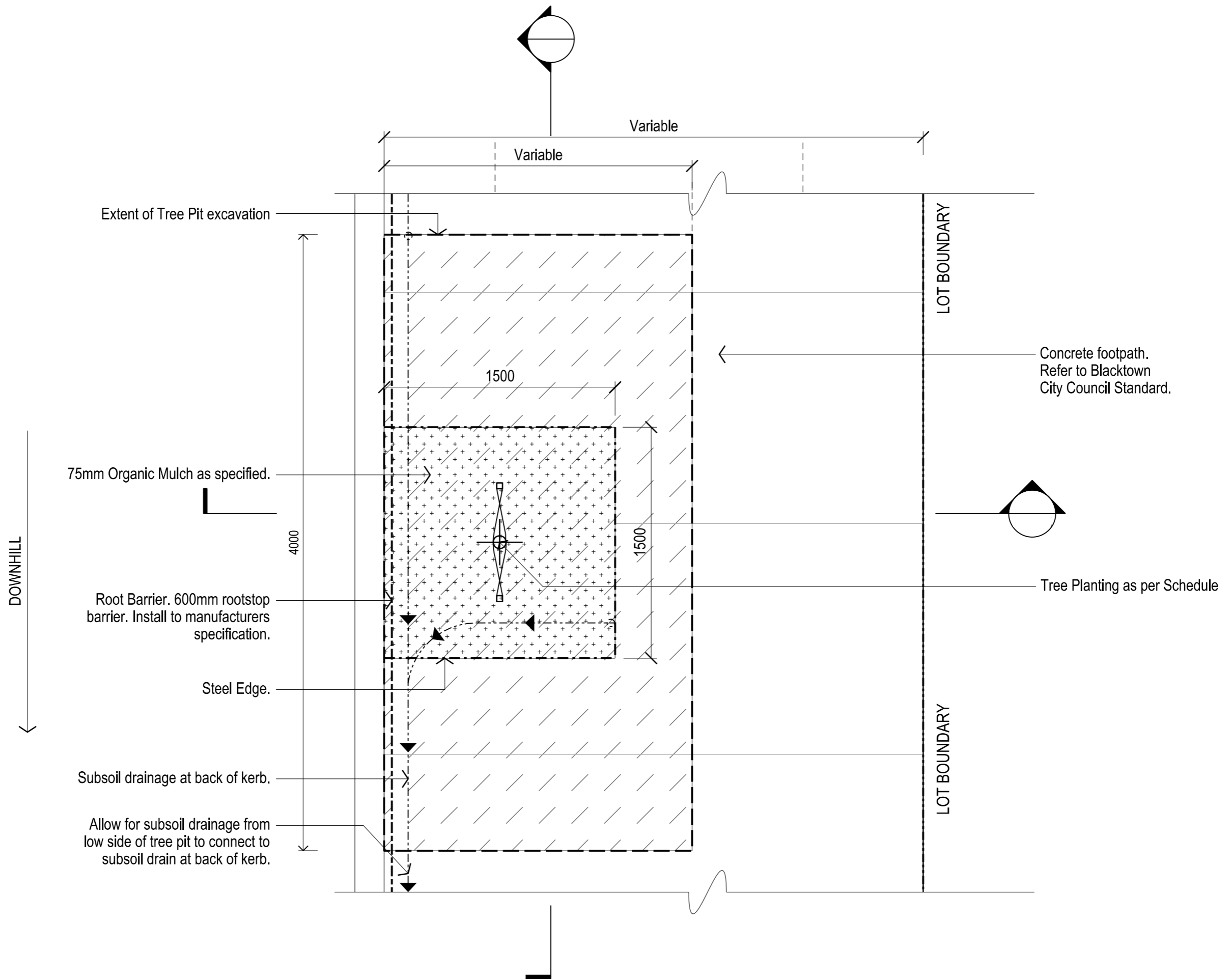
Flindersia australis

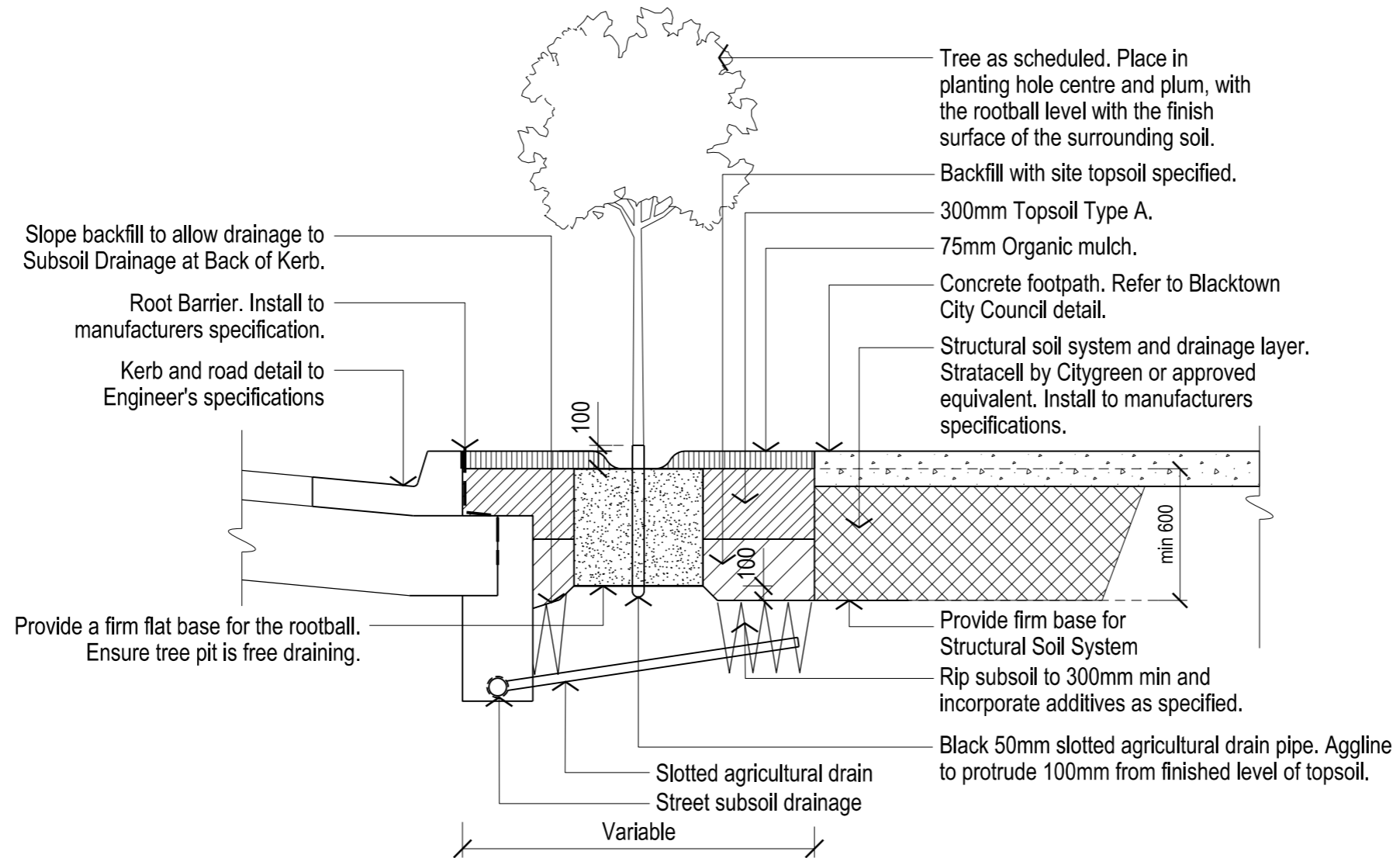


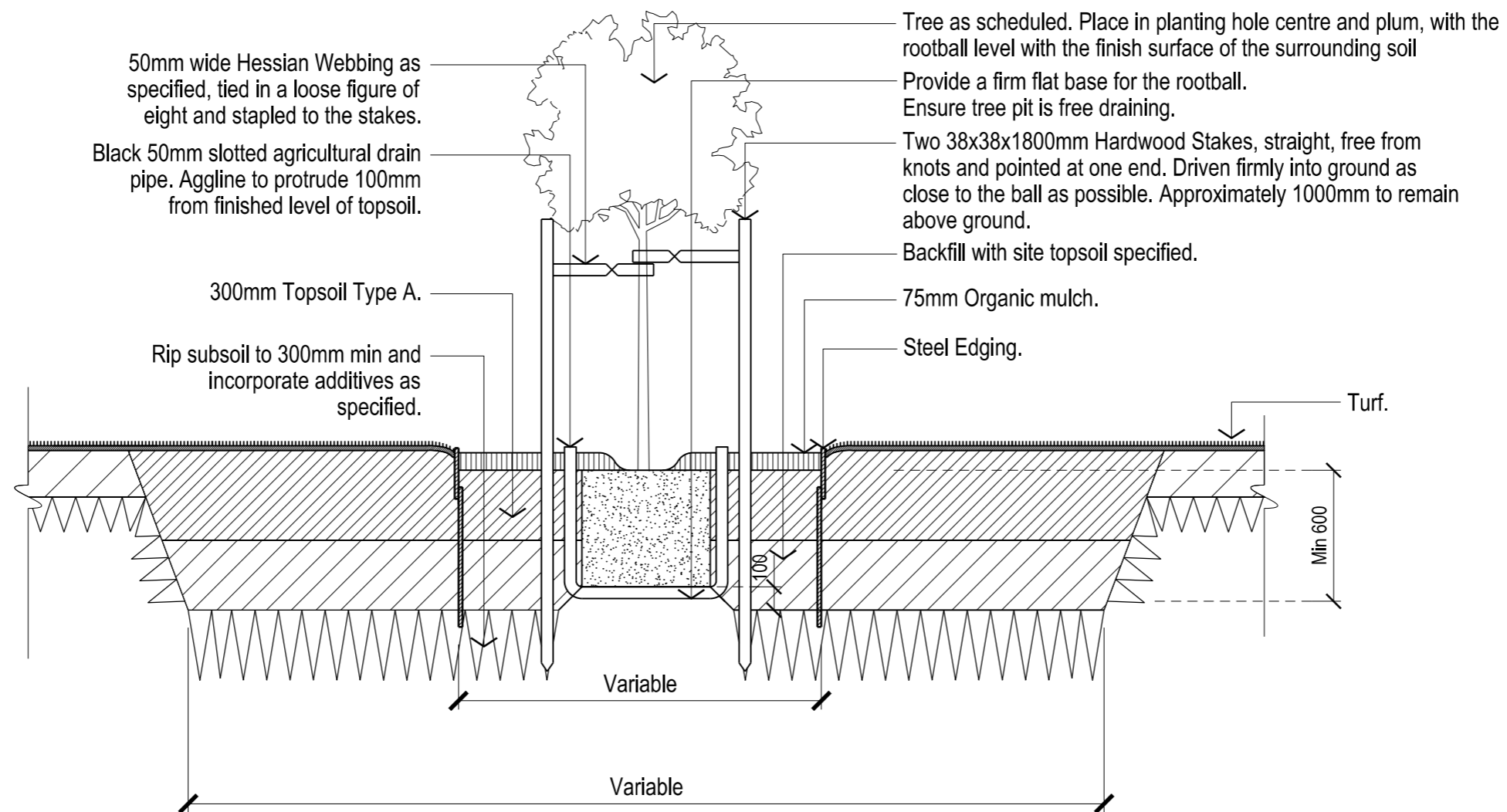


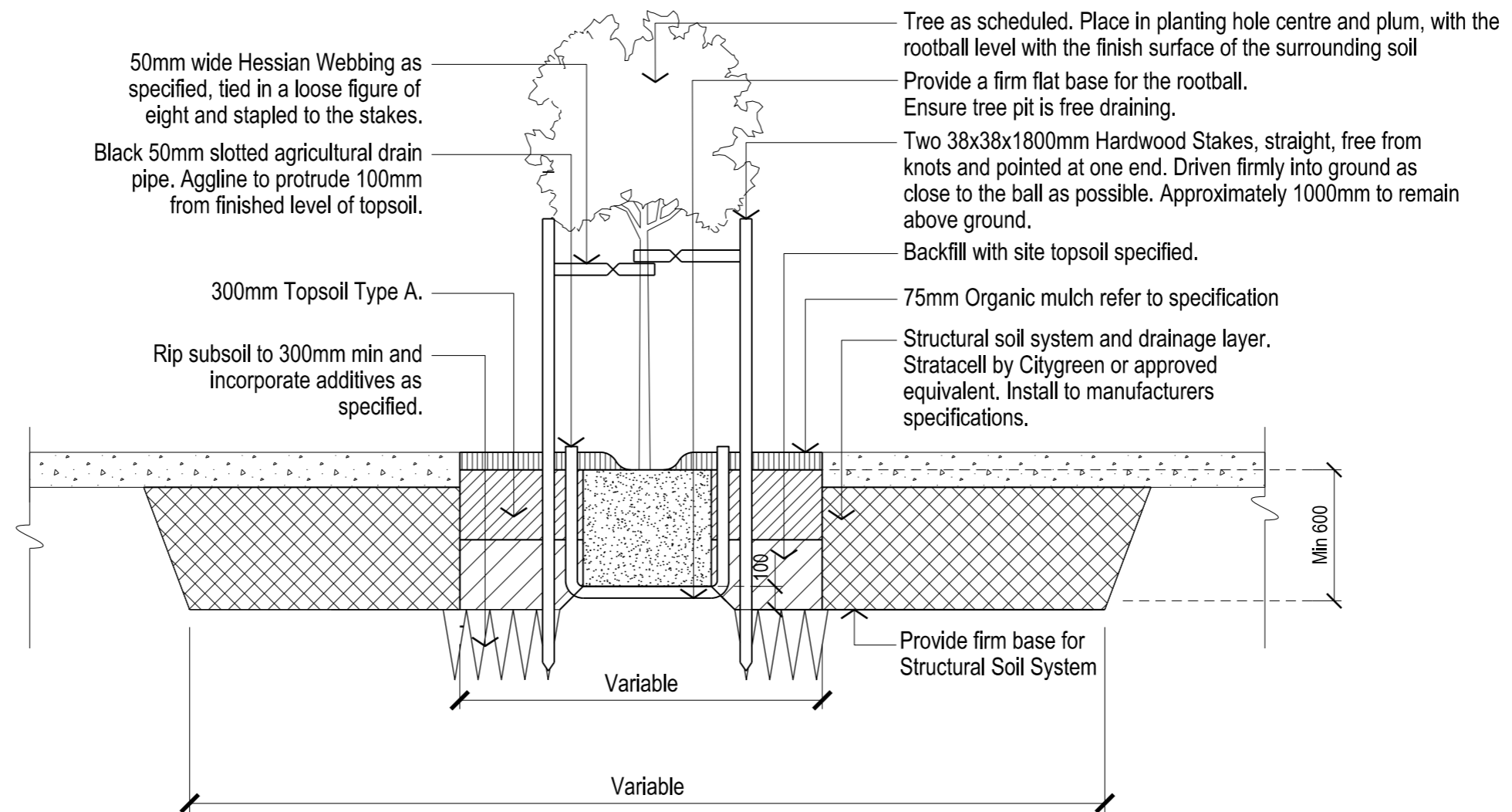












PROJECT CREDITS

CLIENT
LANDCOM

CONSULTANT TEAM

CLOUSTON ASSOCIATES
Crosbie Lorimer - Director
Chak Chan - Landscape Architect

of

CLOUSTON Associates
Landscape Architects • Urban Designers • Landscape Planners
65-69 Kent Street • Sydney NSW 2000
PO Box R1388 • Royal Exchange NSW 1225 • Australia
Telephone +61 2 8272 4999 • Facsimile +61 2 8272 4998
Contact: Crosbie Lorimer
Email • sydney@clouston.com.au
Web • www.clouston.com.au

