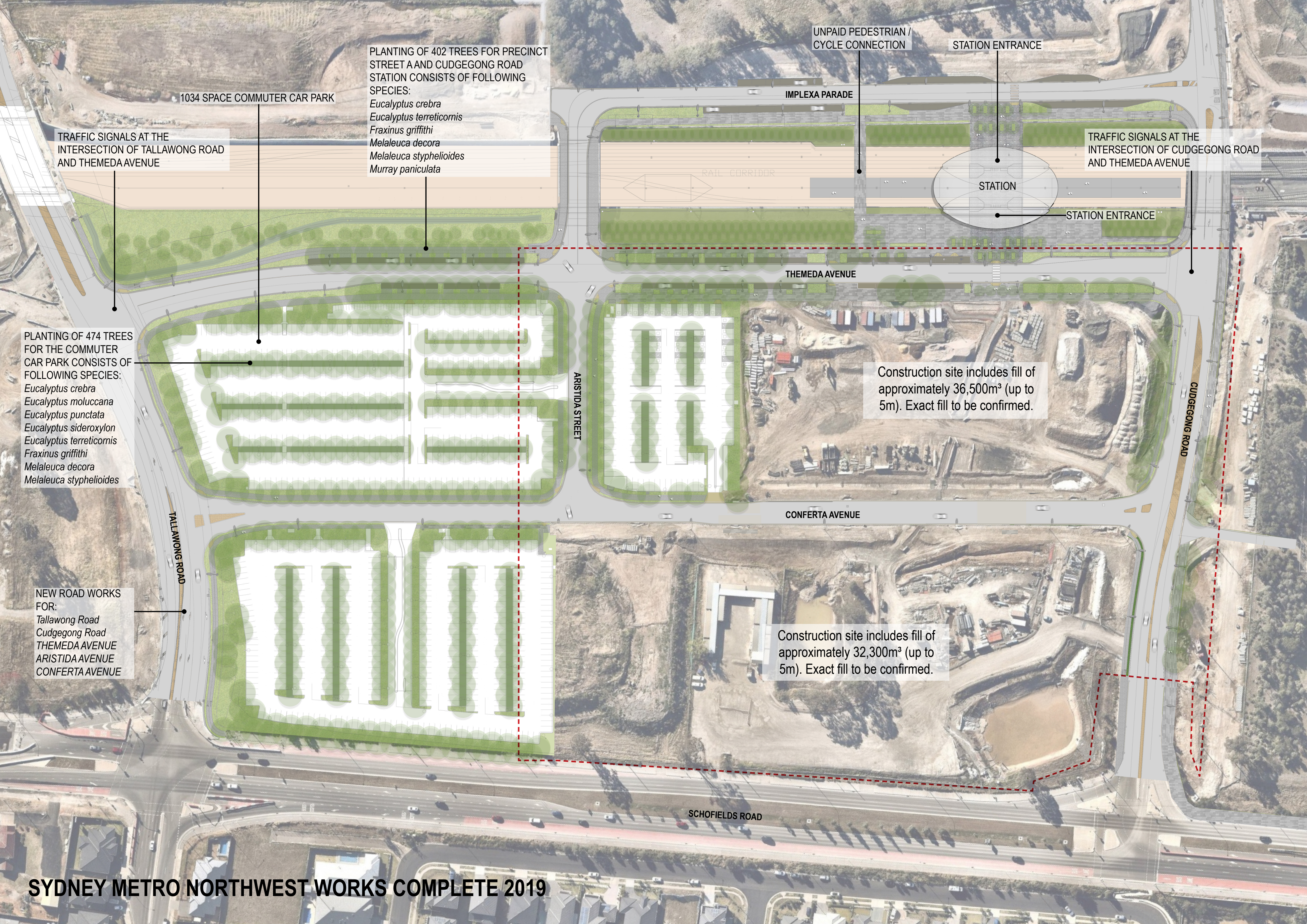


Appendix N

Staging Plans



1034 SPACE COMMUTER CAR PARK

TRAFFIC SIGNALS AT THE
INTERSECTION OF TALLAWONG ROAD
AND THEMEDA AVENUE

PLANTING OF 402 TREES FOR PRECINCT
STREET A AND CUDGEGONG ROAD
STATION CONSISTS OF FOLLOWING
SPECIES:
Eucalyptus crebra
Eucalyptus terreticornis
Fraxinus griffithi
Melaleuca decora
Melaleuca styphelioides
Murray paniculata

PLANTING OF 474 TREES
FOR THE COMMUTER
CAR PARK CONSISTS OF
FOLLOWING SPECIES:
Eucalyptus crebra
Eucalyptus moluccana
Eucalyptus punctata
Eucalyptus sideroxylon
Eucalyptus terreticornis
Fraxinus griffithi
Melaleuca decora
Melaleuca styphelioides

NEW ROAD WORKS
FOR:
Tallawong Road
Cudgegong Road
THEMEDA AVENUE
ARISTIDA AVENUE
CONFERTA AVENUE

UNPAID PEDESTRIAN /
CYCLE CONNECTION

STATION ENTRANCE

TRAFFIC SIGNALS AT THE
INTERSECTION OF CUDGEGONG ROAD
AND THEMEDA AVENUE

STATION

STATION ENTRANCE

THEMEDA AVENUE

Construction site includes fill of
approximately 36,500m³ (up to
5m). Exact fill to be confirmed.

ARISTIDA STREET

CONFERTA AVENUE

Construction site includes fill of
approximately 32,300m³ (up to
5m). Exact fill to be confirmed.

SCHOFIELDS ROAD