



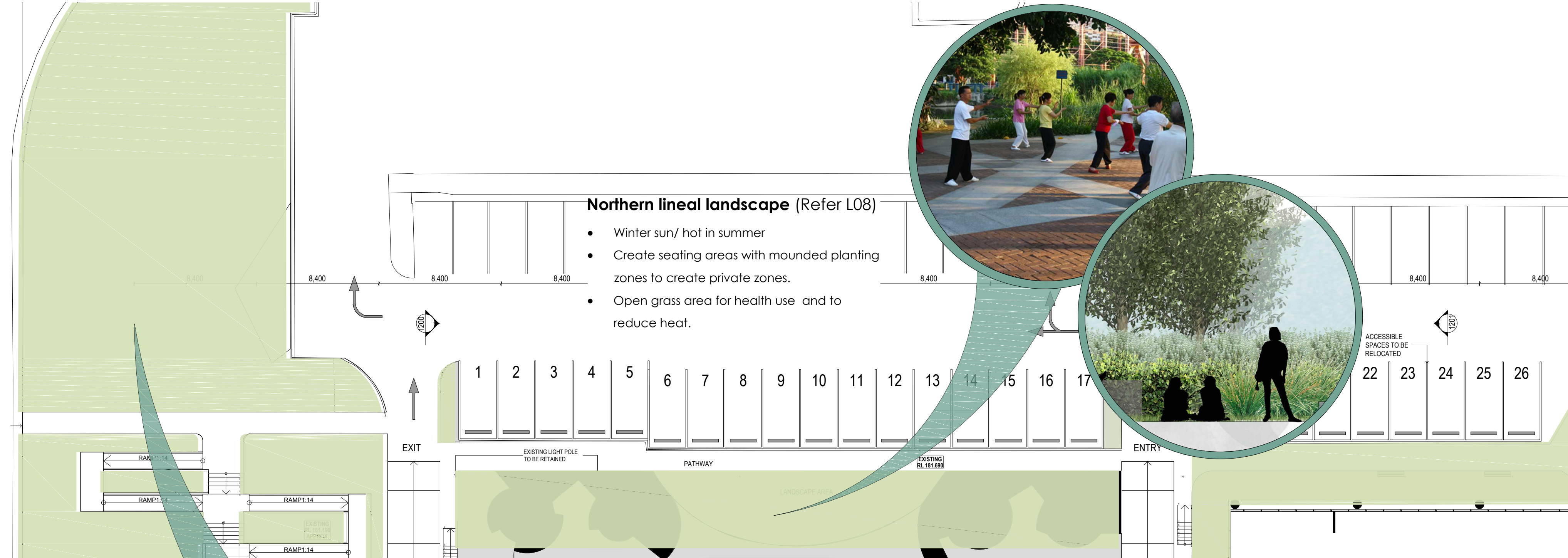
Northern lineal landscape (Refer L08)

- Winter sun/ hot in summer
- Create seating areas with mounded planting zones to create private zones.
- Open grass area for health use and to reduce heat.



Northeast pocket park (Refer L02)

- Winter sun/ hot in summer
- Create equal access from carpark to main entrance and retail zone
- Provide open grassed areas on different levels and seating areas
- Enable views through for surveillance
- Views and connection from retail space into this area
- Larger trees for shade and layered textured plantings



Western courtyard (Refer L05)

- Overshadowing of space/ heat late afternoon in summer
- Connections from parking and bike storage.
- Creation of shapes that are viewed from looking down into the space
- Seating areas and open grass



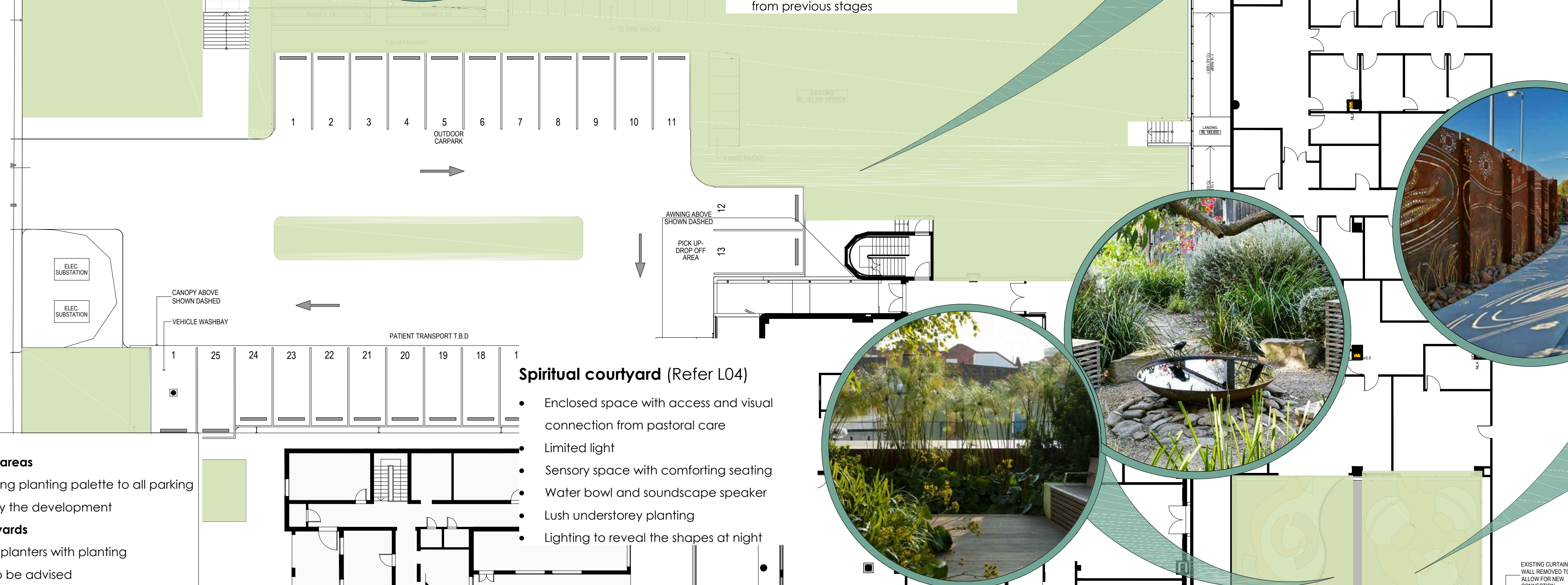
Western park/Northwest pocket park (Refer L06/L07)

- Winter sun/ hot in summer
- Enclose with planting but maintain surveillance and site lines through
- Provide intimate seating areas and open green space
- Visual corner from the highway to reflect historical character of the old hospital and its plantings
- Layered textured plantings
- Retain existing plantings and trees where possible and connect into existing plantings from previous stages



Eastern covered space (Refer L03)

- Eastern sun, winter sun through segments of clear roof
- Maintain access through to doorways
- Maintain access north south
- Puncture segments of overhead roof to enable upright trees to grow through
- Rhythm of trees to reference the building façade
- Evergreen dense plantings to create seating spaces
- Timber seating, some with reclining backs and some with upright
- Pavement variation to define seating areas
- Phone charge/ wifi connectivity
- Uplighting of roof structure at night



Spiritual courtyard (Refer L04)

- Enclosed space with access and visual connection from pastoral care
- Limited light
- Sensory space with comforting seating
- Water bowl and soundscape speaker
- Lush understorey planting
- Lighting to reveal the shapes at night



Aboriginal Health (Refer L04)

- Eastern light
- Perforated metal with meaningful Wiradjuri motifs
- Rocks with engraving as seating
- Endemic and native plantings
- Traditional medicinal plantings
- Lighting to reveal the shapes at night

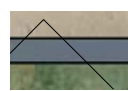
Notes
Car parking areas
Employ existing planting palette to all parking areas to unify the development
Upper courtyards
Light weight planters with planting
Load limits to be advised

LEGEND



Equal access paths

1800 wide x max 1:20 gradient. RLs shown
Integral coloured concrete with textured finish.



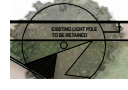
Coloured concrete walls to assist in navig

Coloured concrete walls to assist in navigating level change and to provide colour and movement in the landscape



Timber seats

with Corian segments in ECG shapes. Some with backs and some as platforms for reclining.



Grid of large deciduous trees

Cape Chestnut (*Calodendron capense*)



Textured/ tonal planting

Assists in melding levels between grass areas
Japanese Wind Grass (*Miscanthus Sarabande*)
Native Rosemary (*Westringia Blue Gem*)
Sacred Bamboo (*Nandina Blush*)
Salt Bush (*Rhagodia spinescens*)
Brown salvia (*Salvia africa- lutea*)



Lawn areas

Flat grass areas for smaller gatherings

NOTES

- Create dynamic ECG shapes that emanate from the hospital, radiating out into the landscape
- Provide equal access from the carpark area up to the hospital entrance
- Provide open grassed areas on split levels for use by various groups
- Provide a seating nodes and congregation space including areas out from the retail area
- Integrate larger deciduous trees for shade and layered textured plantings for seasonal interest.

PLANTING PALETTE



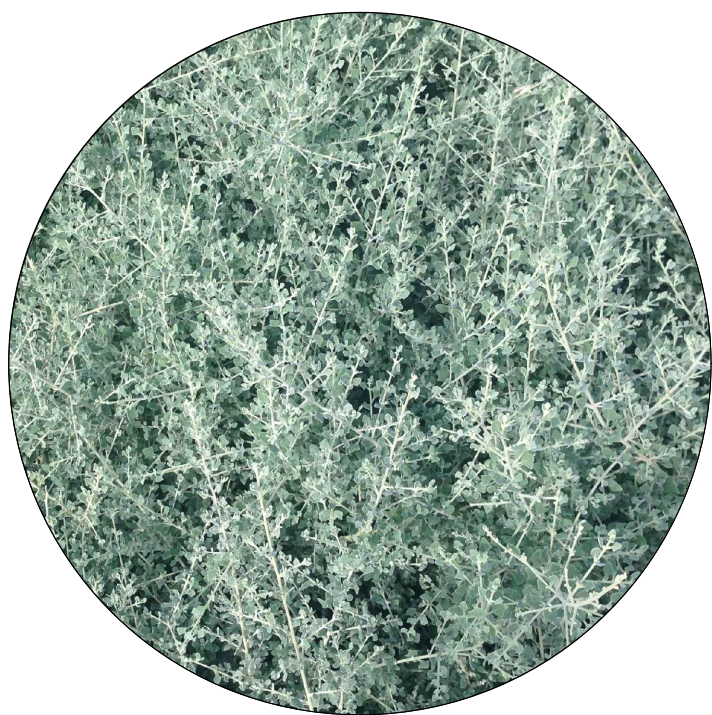
Japanese Wind grass



Native Rosemary



Cape Chestnut



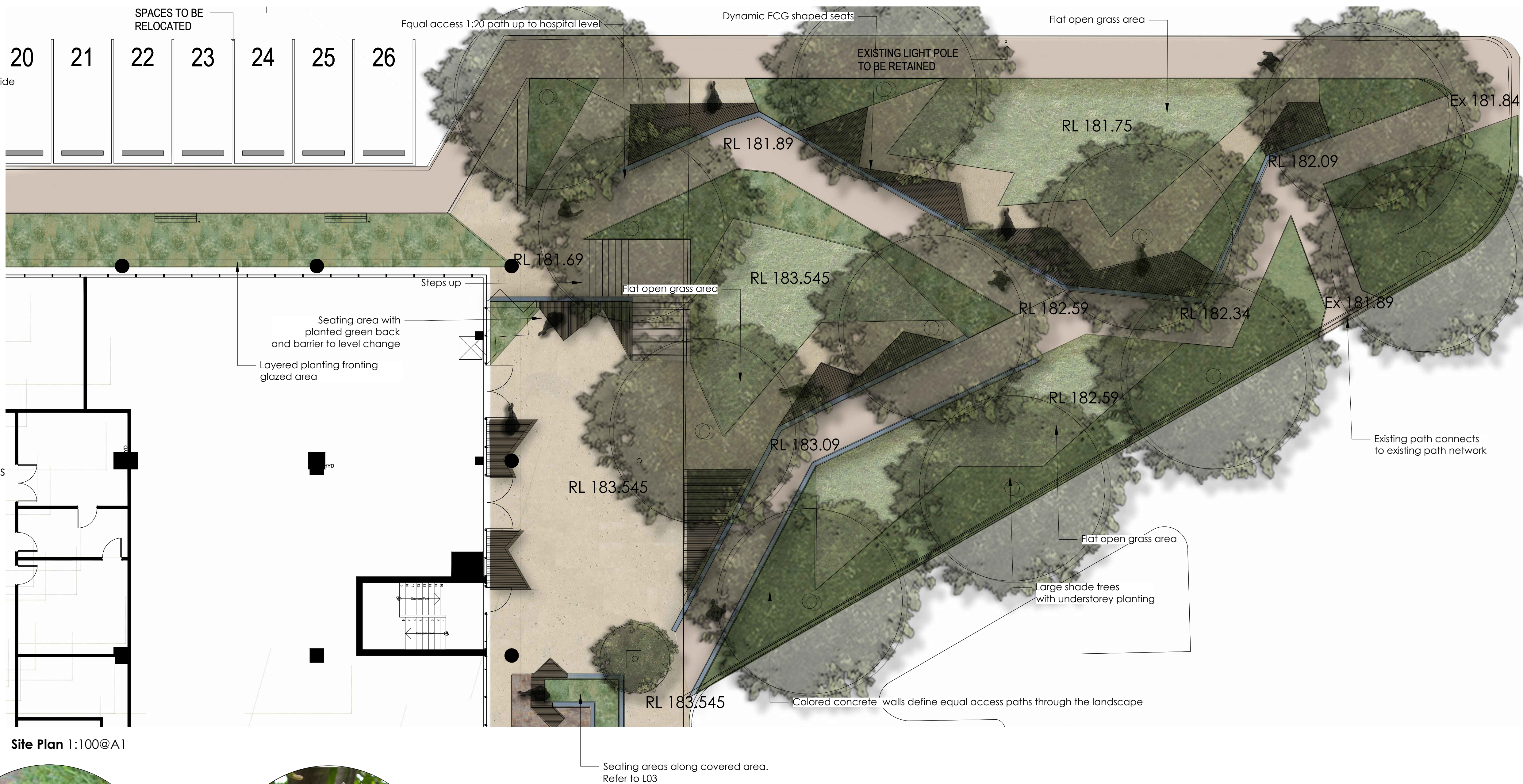
Ground cover saltbush



Sacred Bamboo



Brown Salvia



PLANTING SCHEDULE

| Species Trees | Common Name | Mature Size | Pot Size | Spacing | Nos/ Notes |
|------------------------------|-----------------------|-------------|----------|----------|------------|
| Calodendron capense | Cape Chestnut | 10 x 6m | 500L | As shown | 11 |
| Shrubs/ ground covers | | | | | |
| Miscanthus Sarabande | Japanese Wind Grass | 1.2 x 1.2m | 200mm | 1.2m | |
| Nandina Blush | Sacred Bamboo | .6 x .6m | 200mm | 500mm | |
| Salvia africana-lutea | Brown Salvia | 1 x 1m | 140mm | 800mm | |
| Rhagodia spinescens | Saltbush ground cover | .3 x .8m | 200mm | 800mm | |
| Trachelospermum jasminoides | Star Jasmine | .3 x 1.5m | 140mm | 800mm | |
| Westringia Mundi | Native Rosemary | .4 x 1m | 140mm | 800mm | |