



Wagga Wagga Health Service Redevelopment | Stage 3
Landscape SD Refresh

31st August 2018 | Tender Issue

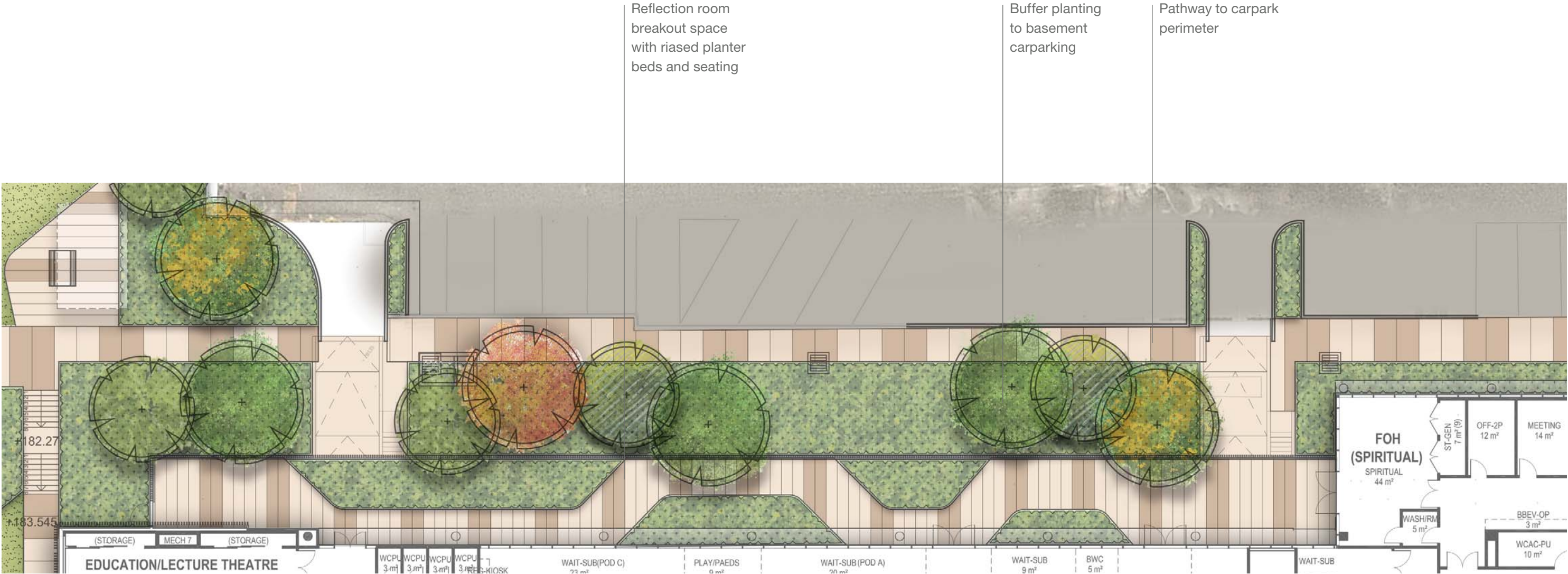


Landscape Plan



- A Northern Lineal Landscape and Terrace
- B North East Pocket Park
- C Eastern Covered Space
- D North West Park
- E Western Park
- F Southern Courtyard
- G Cultural Courtyard

Northern Linear Landscape and Terrace



Northeast Pocket Park



Planting to embankment

1:20 ramp access

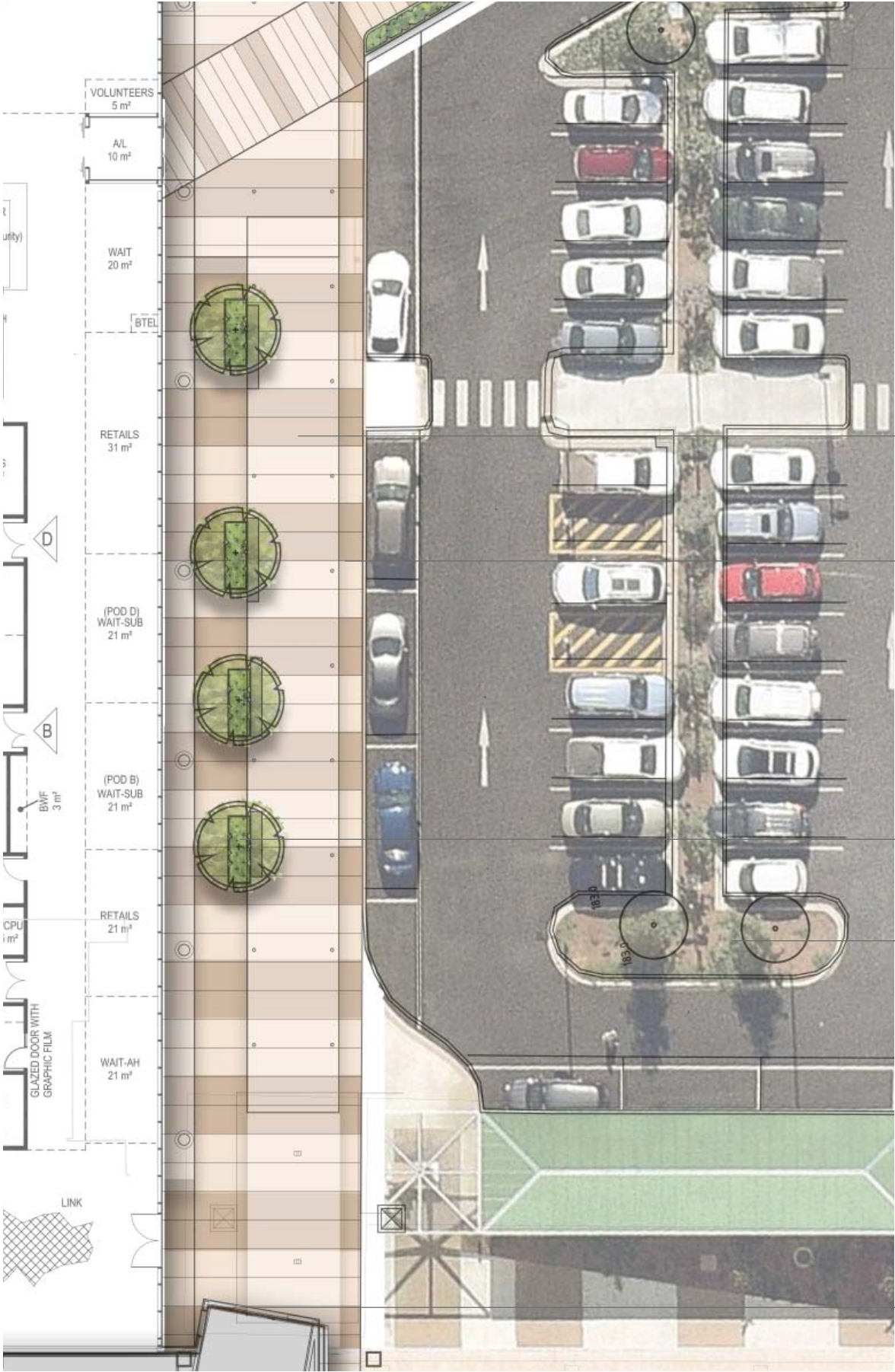
Terraced walls to turf slope

Indicative art installation location

Exiting Carpark planting to be retained



Eastern Covered Space



Architectural canopy over

Feature banding paving

Block and planter beds

Existing carpark planting to be retained

Connection to existing ASB entry



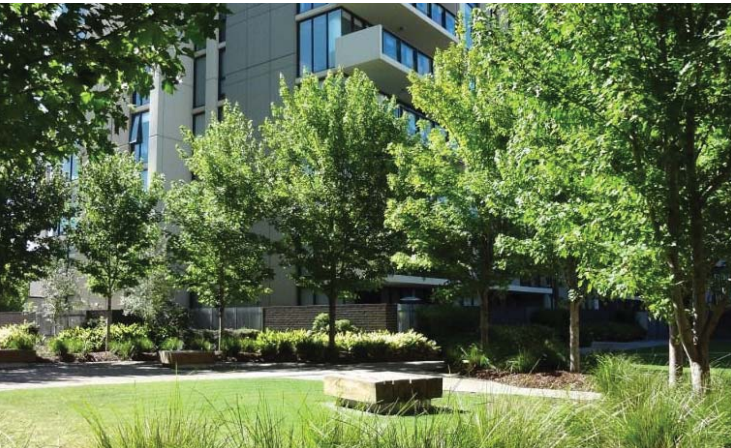


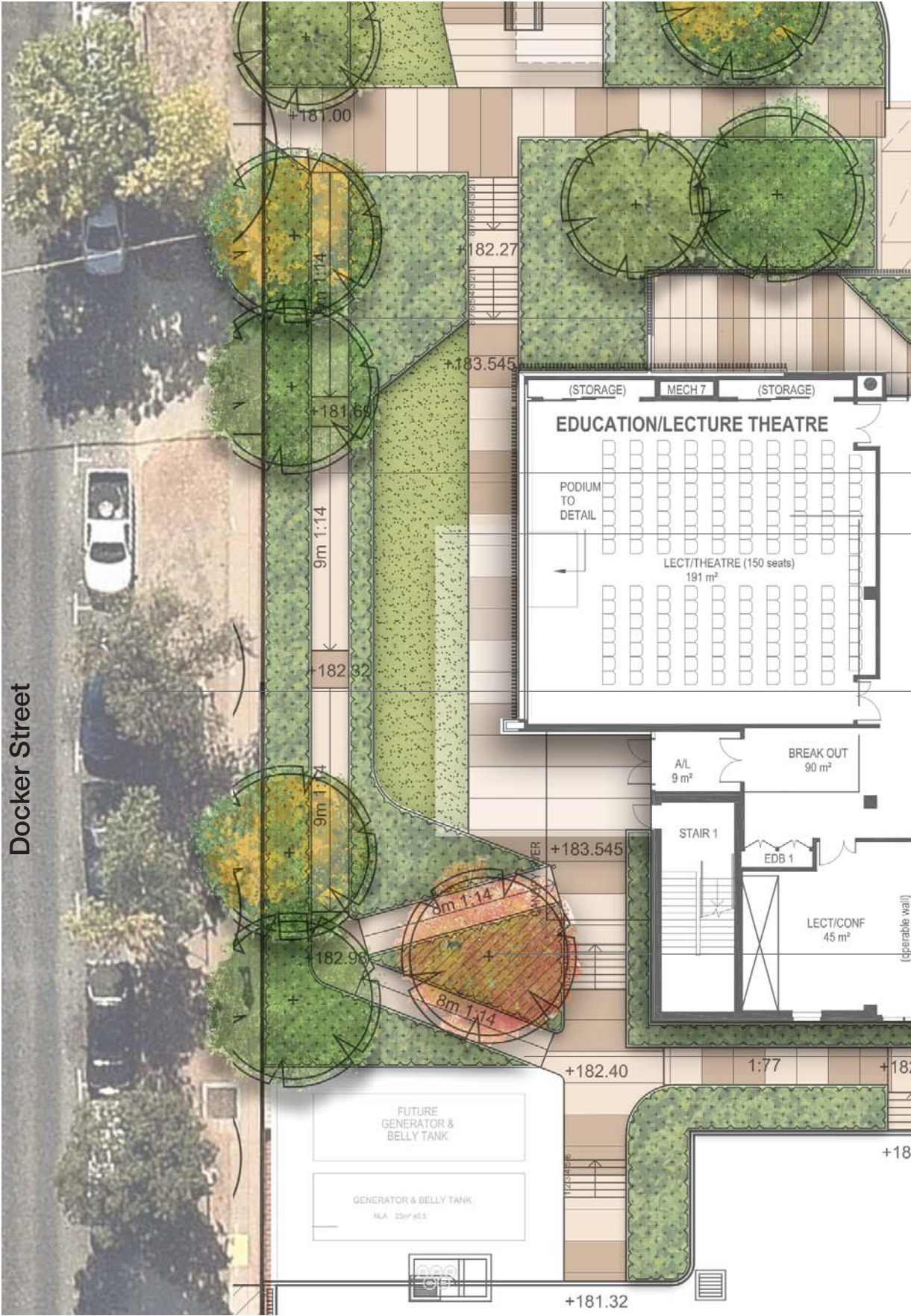
Existing low brick
fence to perimeter
to be retained

Paved seating area

Open lawn area

Paved seating area
with shelter





Boundary planting

Ramp to north western park
Open turf area

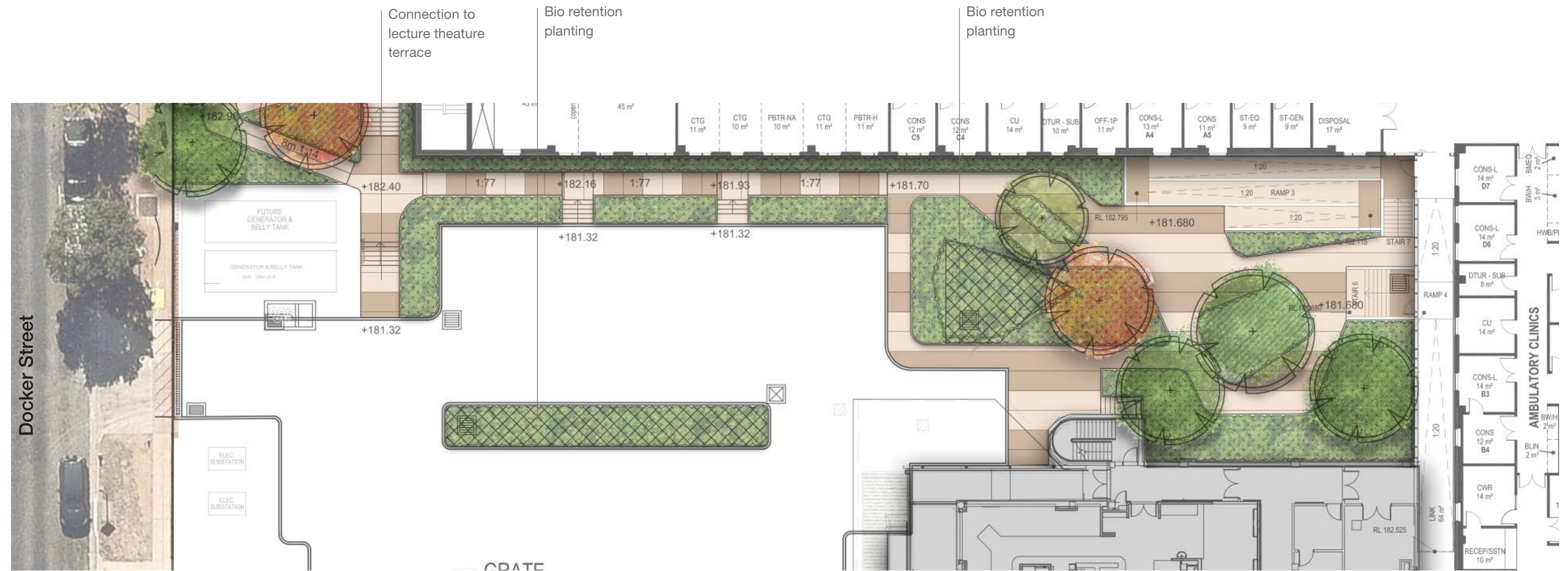
Existing street trees to be retained

Proposed massed and feature tree planting

Ramp to terrace level



A photograph of a modern building entrance with a large glass facade, flanked by young trees and a paved walkway. A person is walking away from the camera towards the entrance.



Cultural Courtyard



- Mural Wall
- Bench seating
- Planting to courtyard perimeter
- Location for sculpture
- Feature Paving Pattern with continuation to foyer
- Barbeque
- Natural seating elements
- Location for water and play elements

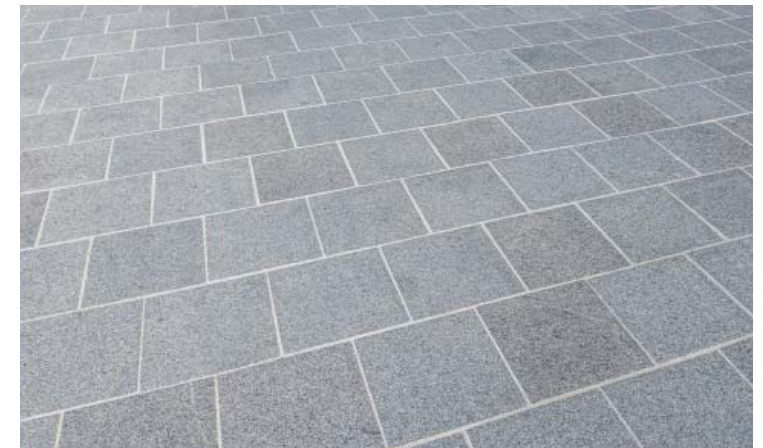


The floor plan shows a complex layout of rooms and corridors. Key areas include:

- Top Section:** A large lounge/PT area (33 m²) with a circular table and chairs. Adjacent to it is a dining area (30 m²) and a kitchen (10 m²). A staff base (2 m²) is located near the lounge.
- Central Corridor:** A central corridor with four lifts (LIFT 1, LIFT 2, LIFT 3, LIFT 4) and a lift lobby. The corridor is flanked by various rooms, including a lounge/PT area (15 m²), a kitchen (10 m²), and a staff base (2 m²).
- Bottom Section:** A large lounge/PT area (33 m²) with a circular table and chairs. Adjacent to it is a dining area (34 m²) and a kitchen (10 m²). A staff base (2 m²) is located near the lounge.
- Right Side:** A series of rooms including a lounge/PT area (15 m²), a kitchen (10 m²), a staff base (2 m²), and several patient rooms (1 BED 18 m², 1 BED-SP 19 m², 1 BED 18 m²).
- Left Side:** A series of rooms including a lounge/PT area (15 m²), a kitchen (10 m²), a staff base (2 m²), and several patient rooms (1 BED 18 m², 1 BED-SP 19 m², 1 BED 18 m²).

The plan also includes various other rooms such as a meeting room (20 m²), a staff base (2 m²), a kitchen (10 m²), a lounge/PT area (15 m²), a kitchen (10 m²), a staff base (2 m²), and several patient rooms (1 BED 18 m², 1 BED-SP 19 m², 1 BED 18 m²).

Note - design subject to further user consultation



Level 4 Rehabilitation Terrace



Walking circuit around terrace

Raised planter beds with seating edges

Open breakout space for gym

Fixed dining furniture

Note - design subject to further user consultation and may include further landscape features for rehabilitation therapy such as stairs, ramps, and paving surface changes



Indicative Planting

Proposed planting shall be a mixture of native and exotic species chosen for their suitability to the local conditions. New garden beds are to be irrigated to ensure successful establishment and the ongoing health of planting.

Symbol	Botanic Name	Common Name	Mature Size (h x w)	Pot Size	Spacing
Trees					
Aj	<i>Albizzia julibrissin</i>	Silk Tree	6 x 6	500L	As Shown
BpF	<i>Betula pendula Fastigiata</i>	Silver Birch	8 x 4	200L	As Shown
Cc	<i>Calodendron capense</i>	Cape Chestnut	10 x 6	500L	As Shown
ELS	<i>Eucalyptus Little Spotty</i>	Dwarf Spotted Gum	7 x 5	200L	As Shown
FpU	<i>Fraxinus pennsylvanica Urbanite</i>	Flowering Ash	12 x 8	500L	As Shown
Jm	<i>Jacaranda mimosifolia</i>	Jacaranda	10 x 8	500L	As Shown
LiN	<i>Lagerstroemia indica Natchez</i>	Crepe Myrtle	6 x 6	500L	As Shown
LtF	<i>Liriodendron tulipifera Fastigiata</i>	Tulip Tree	13 x 5	1000L	As Shown
Pp	<i>Parrotia persica</i>	Persian Parrotia	7 x 5	500L	As Shown
Pca	<i>Phoenix canneriensis</i>	Phoenix Palm	10 x 5	1000L	As Shown
Pc	<i>Pistacia chinensis</i>	Chinese Pistacio	8 x 6	500L	As Shown
UT	<i>Ulmus parvifolia Todd</i>	Chinese Elm	10 x 8	500L	As Shown
Shrubs					
Bm	<i>Buxus microphylla var. japonia</i>	Japanese Box	0.8 x 0.6	300mm	As Shown
Ca	<i>Correa alba</i>	Native Fuchsia	1 x 1	300mm	As Shown
CDB	<i>Correa Dusky Bells</i>	Native Fuchsia	0.5 x 1.5	300mm	As Shown
Fs	<i>Feijoa sellowiana</i>	Feijoa	2 x 2	300mm	As Shown
Jc	<i>Justicia carnea</i>	Brazilian Plume Flower	0.8 x 0.8	300mm	As Shown
LBB	<i>Laurus nobilis Baby Bay</i>	Dwarf Bay Tree	2 x 2	300mm	As Shown
NB	<i>Nandina Blush</i>	Sacred Bamboo	0.6 x 0.6	300mm	As Shown
PLP	<i>Philodendron Little Phil</i>	Dwarf Philodendron	0.3 x 0.3	300mm	As Shown
PCW	<i>Plumbago Cape White</i>	Plumbago	1.2 x 1.2	300mm	As Shown
Ro	<i>Rosmarinus officianalis</i>	Rosemary	1 x 1	300mm	As Shown
Sa	<i>Salvia africana-lutea</i>	Brown Salvia	1 x 1	300mm	As Shown
Rs	<i>Rhagodia spinescens</i>	Saltbush	0.3 x 1.5	300mm	As Shown
WBG	<i>Westringia Blue Gem</i>	Native Rosemary	1 x 0.8	300mm	As Shown
WM	<i>Westringia Mundi</i>	Native Rosemary	0.4 x 1	300mm	As Shown
Grasses and Groundcovers					
LT	<i>Lomandra Tanika</i>	Lomandra	0.5 x 0.5	140mm	5/m2
Ms	<i>Miscanthus Sarabande</i>	Japanese Wind Grass	1.2 x 1.2	200mm	5/m2
Ta	<i>Trachelospermum asiaticum</i>	Star Jasmine	1 x 1	140mm	5/m2
Tj	<i>Trachelospermum jasminoides</i>	Star Jasmine	0.3 x 1.5	140mm	5/m2



Calodendron capense



Jacaranda mimosifolia



Lagerstroemia indica Natchez



Phoenix canariensis



Pistacia chinensis



Ulmus parvifolia Todd



Buxus microphylla japonica



Justicia carnea



Laurus nobilis Baby Bay



Nandina Blush



Philodendron Little Phil



Salvia africana-lutea



Westringia Blue Gem



Lomandra Tanika



Miscanthus Sarabande



Trachelospermum jasminoides