

LEGEND

- Concrete areas**
Integral coloured concrete with textured finish.
- Concrete areas**
Contrasting colour and texture to seating areas
- Raised concrete planters**
with coloured finish to 800mm height.
Walls include segments of moulded Corian seating.
- Timber seats**
Integral to planter walls with ECG shapes.
Some with back as some as reclining.
- Upright trees**
Tulip tree (*Liriodendron tulipifera Fastigiata*)
Trees planted in ground include custom made, accessible steel tree grate as surrounds.
- Understorey planting**
Star jasmine (*Trachelospermum jasminoides*)
Native Rosemary (*Westringia Mundi*)
Native Fuchsia (*Correa Dusky Bells*)

CONCEPT IMAGES



Seating with backs and as benches



Corian as seating segments



Custom made tree grates

NOTES

- Ensure access to doorways and access North South is retained.
- Puncture segments of overhead roof to enable upright trees to grow through roof. The rhythm of trees to reference the building façade.
- Create simple and repetitive raised planters with integral segments of Corian moulded seats and timber seating designed in 'ECG' shapes. Some seating to include upright backs and other reclining as well as including phone charge/ wifi points.
- Provide dense hedges and ground covers to create enclosed and lush seating spaces
- Landscape to include up lighting to form patterns on the above roof.

PLANTING PALETTE



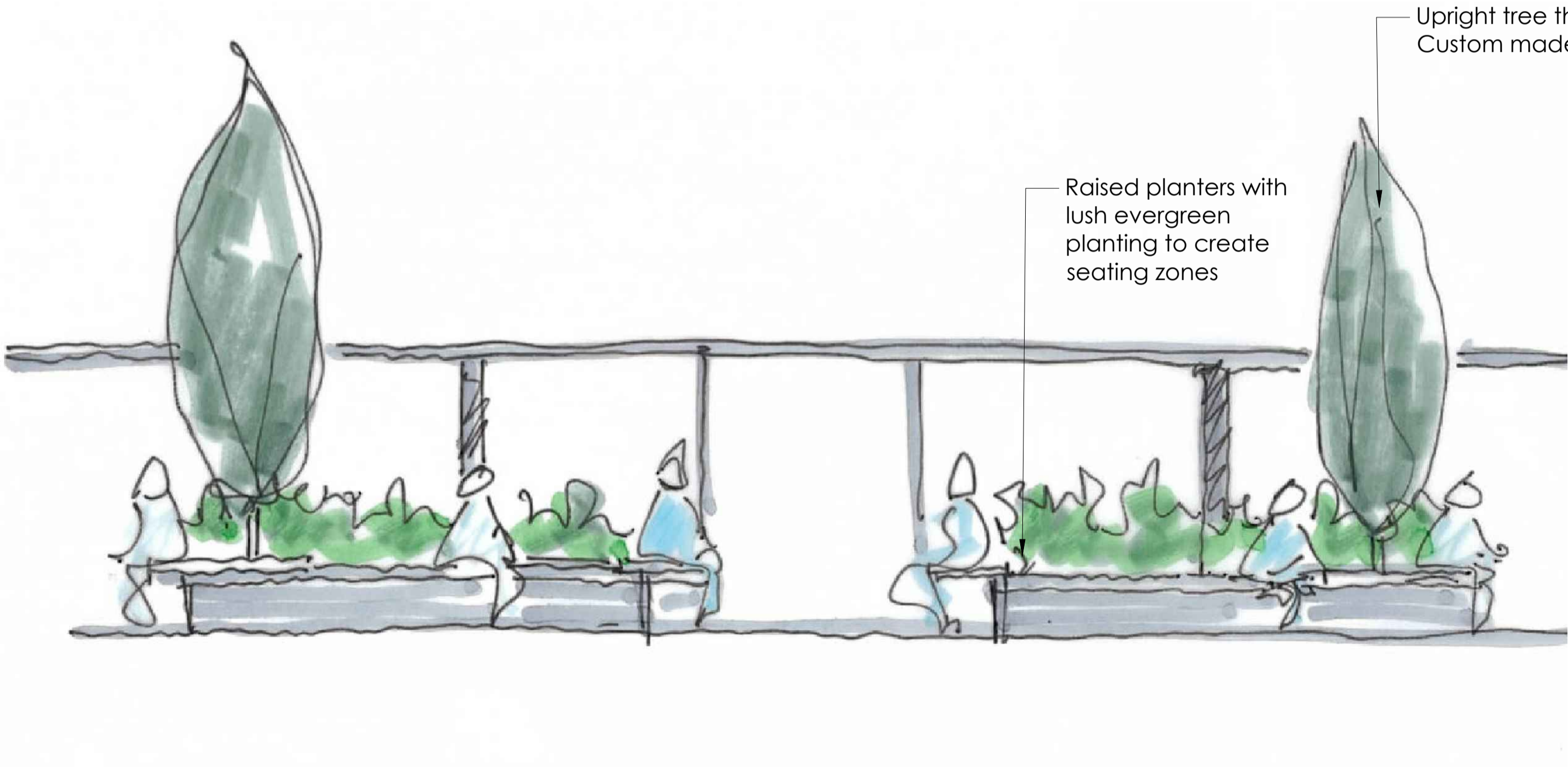
Tulip tree (*Liriodendron tulipifera Fastigiata*)



Star jasmine (*Trachelospermum jasminoides*)

PLANTING SCHEDULE

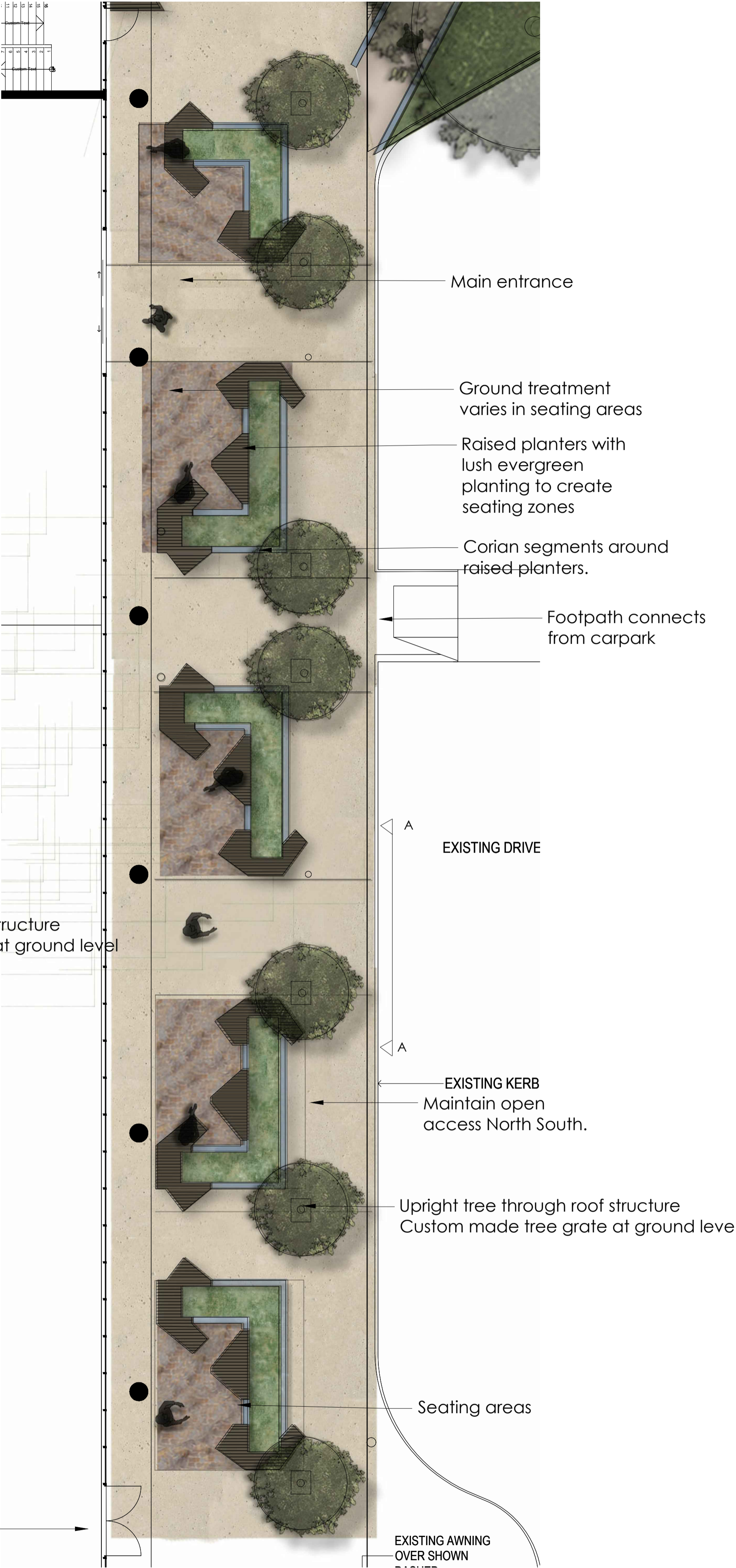
Species	Common Name	Mature size	Pot Size	Spacing	Nos/Notes
Tree					
<i>Liriodendron tulipifera Fastigiata</i>	Tulip Tree	13 x 5m	1000L	As shown	7
Shrubs, ground covers					
<i>Correa Dusky Bells</i>	Native Fuchsia	.5m x 1.5m	140mm	1m	Clip to shape
<i>Buxus microphylla var japonica</i>	Japanese Box	.8 x .6	200mm	600mm	
<i>Trachelospermum jasminoides</i>	Star Jasmine	.3 x 1.5m	200mm	800mm	
<i>Westringia Mundi</i>	Native Rosemary	.4m x 1m	140mm	800mm	




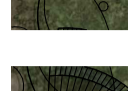


Sketch Section A-A (NTS)

Entrance

Site Plan
1:100 @A1



LEGEND

- **Concrete paved area**
Integral colour and texture to define paths
- **Concrete paved area**
Texture and colour variation
- **Proposed trees**
Silver Birch (Betula pendula)
- **Lush under storey planting**
Justicia carnea (Justicia)
Philodendron Little Phil (Philodendron) Star Jasmine (Trachelospermum jasminoides)
- **"Embrace" curved seats**
Stone walls as back with integral timber seats
- **Custom made steel laser cut tree grate**
- **Water bowl**

NOTES

- Create a private sensory space for individuals and families.
- Space includes lush understorey plantings and narrow trees with textured trunks that can be up lit at night.
- Elements includes embrace seating and water bowl with soundscape speaker.

PLANTING SCHEDULE (both courtyards)

Species	Common Name	Mature Size	Pot Size	Spacing	Nos/ Notes
Trees					
Eucalyptus Little Spotty	Dwarf Spotted Gum	7 x 5m	200L	As shown	5
Betula pendula Fastigiata	Silver Birch	8 x 4m	200L	As shown	5
Parrotia persica	Persian Parrotia	7 x 5	500L	NA	1 (Central tree)
Ground covers, shrubs and grasses					
Correa alba	Native Fuchsia	1 x 1m	140mm	800mm	Clip to shape
Correa Dusky Bells	Native Fuchsia	.5 x 1.5	140mm	1m	
Feijoa sellowiana	Feijoa	2 x 2m	200mm	1.5m	Clip to shape
Justicia carnea	Brazilian Plume Flower	.8 x .8m	200mm	800mm	
Lomandra Tanika	Lomandra	.5 x .5m	140mm	4/m2	
Philodendron Little Phil	Dwarf Philodendron	.3 x .3m	140mm	4/m2	
Plumbago Cape White	Pumbago	1.2 1.2	200mm	1m	
Rhagodia spinescens	Ground cover saltbush	.3 x .8m	200mm	800mm	
Trachelospermum jasminoides	Star Jasmine	.3 x 1.5m	140mm	800mm	

CONCEPT IMAGES



Waterbowl with lush planting



Custom made tree grate



Silver birch (Betula pendula)

CONCEPT IMAGES



Sandstone blocks for seating



Perforated metal screens



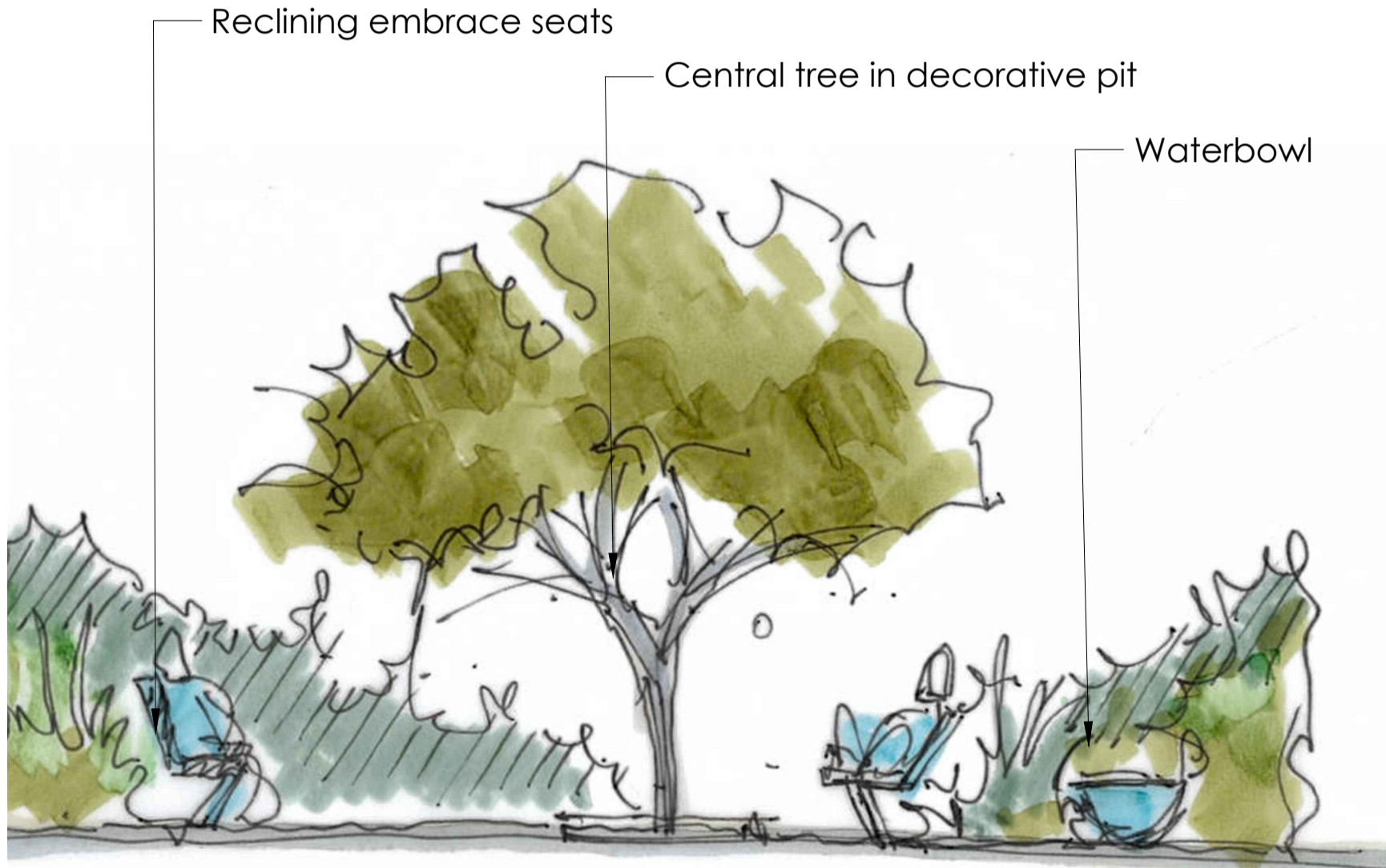
Endemic planting

LEGEND

- **Concrete paved area**
Integral colour and texture to define ground shapes
- **Concrete paved area**
Texture and colour variation
- **Proposed trees**
Little spotty dwarf gum(Eucalyptus mannifera Little Spotty)
- **Traditional medicinal understorey plants**
To be further discussed with Elders
- **Sandstone blocks**
with engraving of symbols for seating
- **Perforated metal screens**
for privacy and to enclose the space.
Screens to include meaningful Wiradjuri motifs and words. To be further discussed with Elders.
Up light at night

NOTES

- Create a private space for individuals and families.
- Include species with traditional medicinal properties and incorporate trees with textured trunks for uplighting at night.
- Elements include perforated metal screens with meaningful Wiradjuri motifs for privacy and form, large oversized rocks for seating that feature motifs and symbols.



Sketch Section A-A (NTS)

