

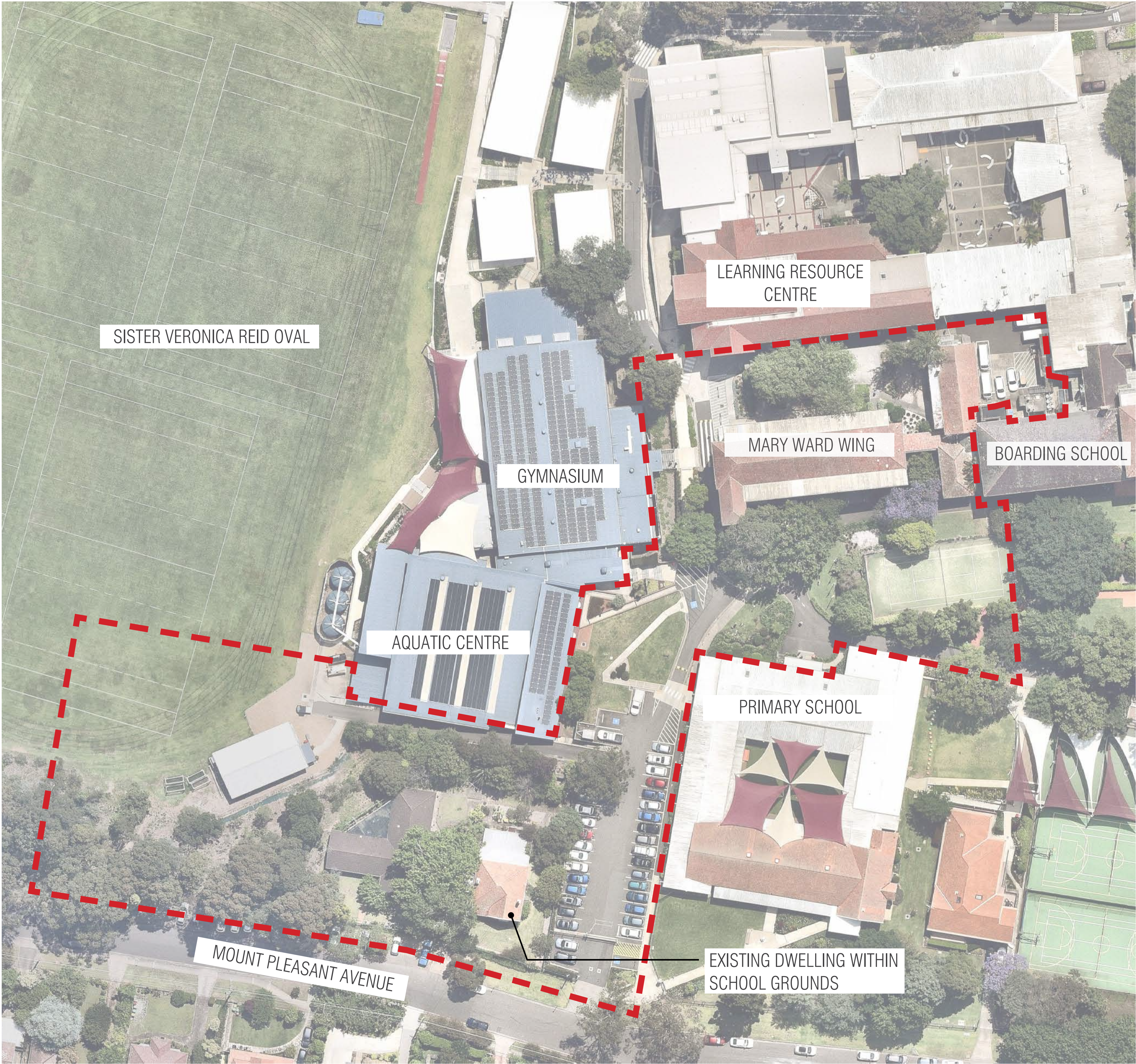
LORETO NORMANHURST
***STATE SIGNIFICANT DEVELOPMENT APPLICATION
(LANDSCAPE CONCEPT MASTERPLAN STAGE 1 WORKS)***

JANUARY 2019



OCULUS

STAGE 1 EXISTING SITE CONTEXT & DRAWING REGISTER



DRAWING REGISTER

DWG NUMBER	TITLE
L-000	STAGE 1 EXISTING SITE CONTEXT & DRAWING REGISTER
L-001	EXISTING SITE IMAGES
L-002	EXISTING SITE MASTERPLAN
L-003	PROPOSED LANDSCAPE MASTERPLAN
L-004	PROPOSED VEHICULAR & PEDESTRIAN MOVEMENT MASTERPLAN
L-005	STAGE 1 PROPOSED CONCEPT MASTERPLAN
L-006	STAGE 1 STAGING WORKS PLAN
L-100	BOARDING SCHOOL TREE RETENTION & REMOVAL PLAN
L-101	MARY WARD TREE RETENTION & REMOVAL PLAN
L-102	BOARDING SCHOOL LANDSCAPE ZONING PLAN (GROUND FLOOR)
L-103	BOARDING SCHOOL LANDSCAPE ZONING PLAN (ROOF LEVEL)
L-104	LANDSCAPE ZONING - DESIGN INTENT
L-200	BOARDING SCHOOL GROUND FLOOR LANDSCAPE KEY PLAN (GROUND FLOOR)
L-201	BOARDING SCHOOL GROUND FLOOR LANDSCAPE KEY PLAN (ROOF LEVEL)
L-202	MARY WARD LANDSCAPE KEY PLAN
L-203	BOARDING SCHOOL LOWER GROUND LANDSCAPE PLAN (1 OF 5)
L-203	BOARDING SCHOOL UPPER GROUND LANDSCAPE PLAN (2 OF 5)
L-204	BOARDING SCHOOL UPPER GROUND LANDSCAPE PLAN (3 OF 5)
L-205	BOARDING SCHOOL ROOF TERRACE LANDSCAPE PLAN (4 OF 5)
L-206	MARY WARD LANDSCAPE PLAN (5 OF 5)
L-300	BOARDING SCHOOL LANDSCAPE PERSPECTIVE - OUTDOOR DINING 01
L-301	BOARDING SCHOOL LANDSCAPE PERSPECTIVE - OUTDOOR DINING 02
L-302	BOARDING SCHOOL LANDSCAPE PERSPECTIVE - GARDEN PLAZA 01
L-303	BOARDING SCHOOL LANDSCAPE PERSPECTIVE - GARDEN PLAZA 02
L-400	BOARDING SCHOOL LANDSCAPE SECTIONS
L-401	BOARDING SCHOOL INDICATIVE SECTION THROUGH TERRACE & EXISTING TREE
L-402	MARY WARD LANDSCAPE SECTION
L-500	BOARDING SCHOOL FENCE ARRANGEMENT PLAN
L-500	MARY WARD FENCE ARRANGEMENT PLAN
L-501	INDICATIVE MATERIAL PALETTE
L-502	PLANTING PALETTE & INDICATIVE PLANT SCHEDULE
L-503	PLANTING PALETTE & INDICATIVE PLANT SCHEDULE
L-504	BOARDING SCHOOL DEEP SOIL PLAN
L-504	MARY WARD DEEP SOIL PLAN
L-505	TECHNICAL MAINTENANCE

Existing Aerial Photo showing site context and boundary outline. (Source: Nearmap 2018)

EXISTING SITE IMAGES



1. View south from Mount Pleasant St



2. Existing terracing, maintenance ramp & steps along the western edge, between the site and the Aquatic Centre



3. View east within the Teresa Ball carpark



4. View south from within the Mary Ward courtyard showing the existing furniture, paving and trees



5. View from the oval sportsfield looking north towards the site and Aquatic Centre



6. View from within the site overlooking the southern boundary towards the sportsfield



7. Existing trees on the site with the spotted gum tree (T209) to be retained in the foreground. Refer to the Arborist Report for further details



8. View northwards within the Mary Ward Precinct showing the existing vehicular ramp and level changes

EXISTING SITE MASTERPLAN

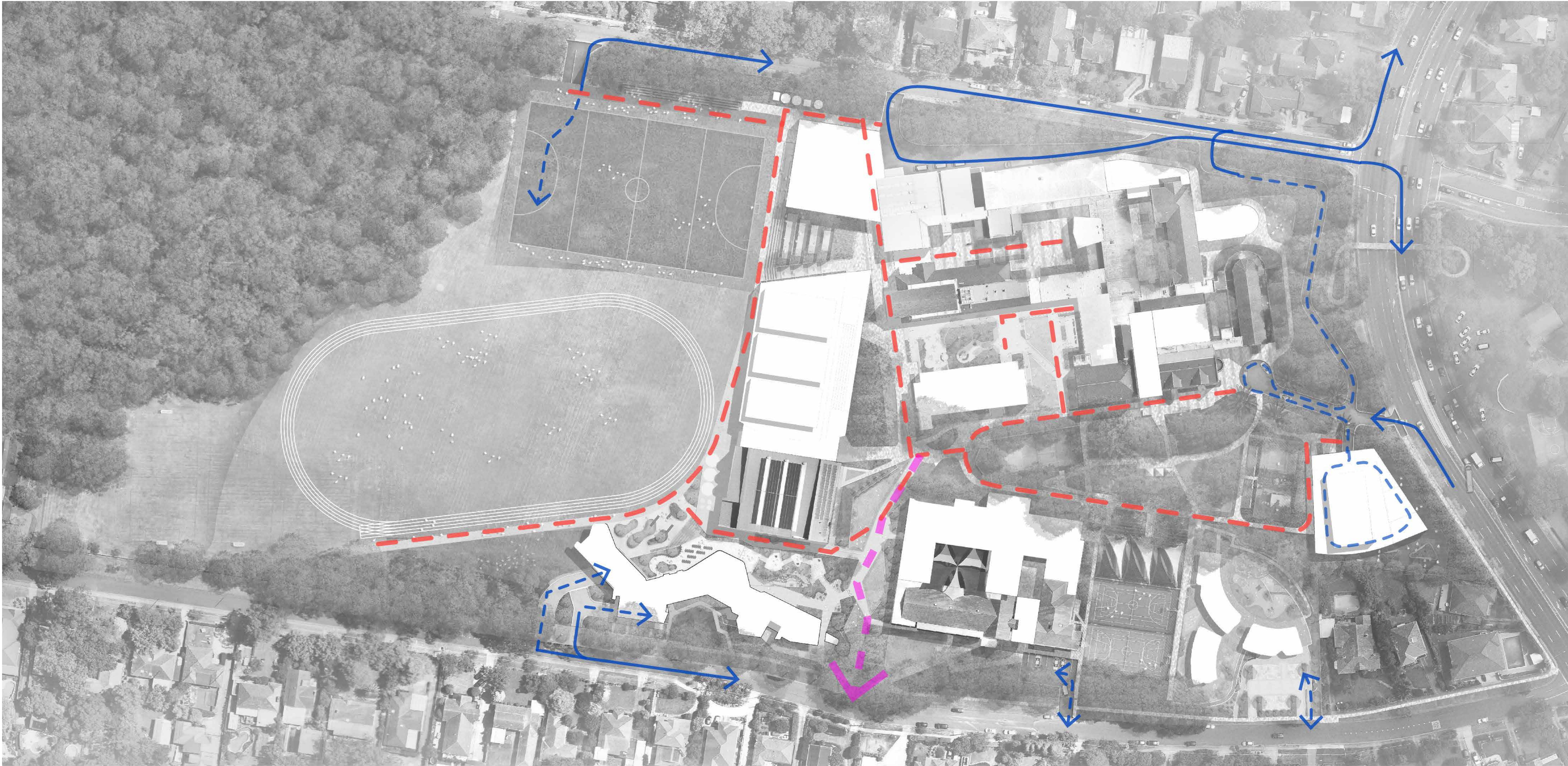


REV.	DATE	STATUS	INITIALS
A	15/01/19	SSDA	EP

PROPOSED LANDSCAPE MASTERPLAN



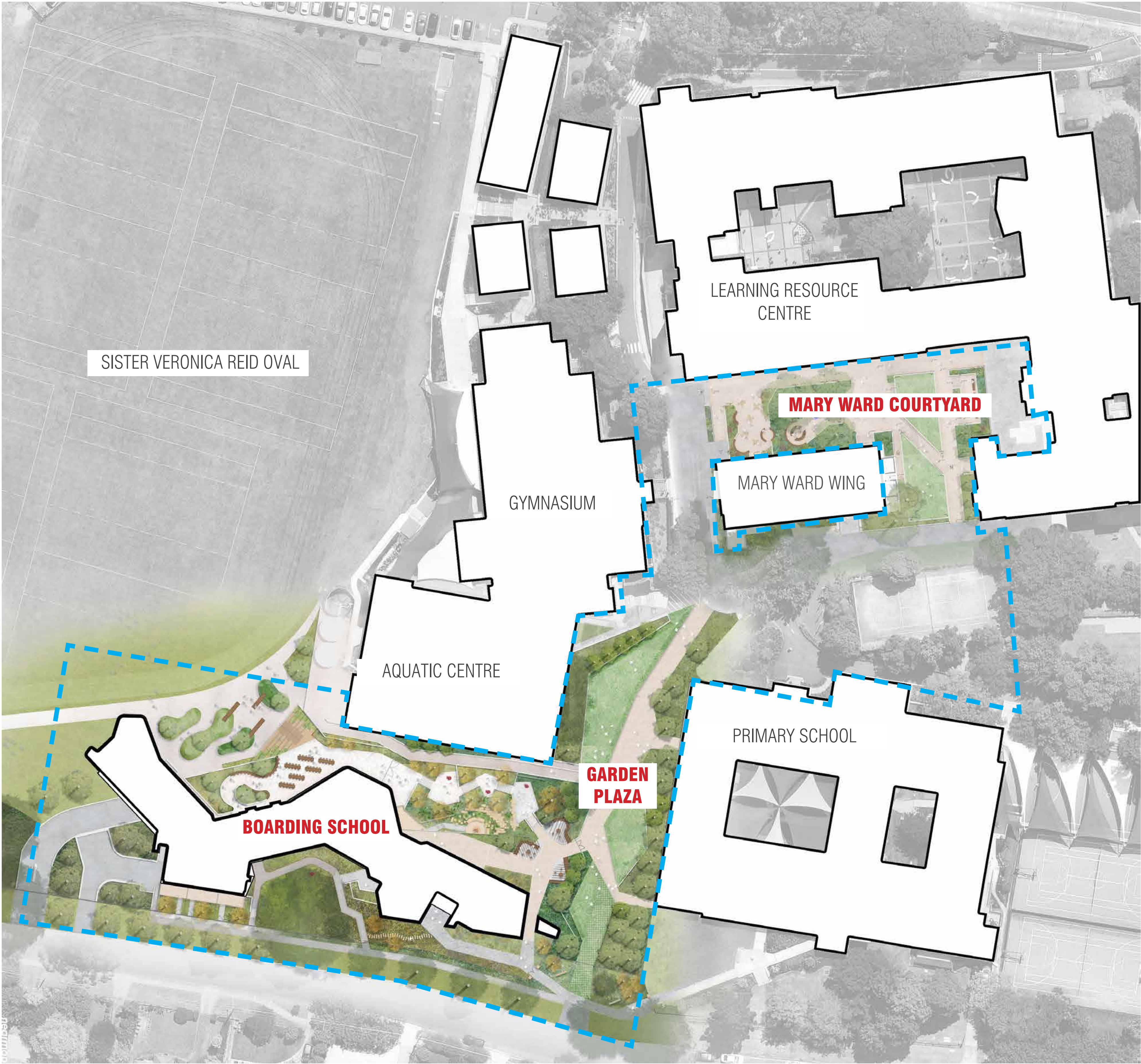
PROPOSED VEHICULAR & PEDESTRIAN MASTERPLAN



- LEGEND
- ←--→ Car parking and delivery access
 - Additional Emergency Vehicle Access
 - Maintenance Buggy Access

REV.	DATE	STATUS	INITIALS
A	15/01/19	SSDA	EP

STAGE 1 CONCEPT MASTERPLAN



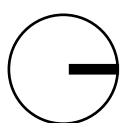
STAGE 1 STAGING WORKS PLAN



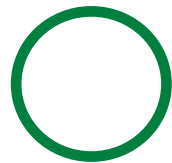
LEGEND

- EXTENT OF STAGE 1 WORKS
- STAGING WORKS BOUNDARY LINE
- STAGE 1A BOARDING SCHOOL AND ASSOCIATED LANDSCAPE WORKS
- STAGE 1B DEMOLITION EXISTING BOARDING SCHOOL AND CONSTRUCTION MARY WARD COURTYARD
- STAGE 1C TEMPOARY WORKS AND GARDEN PLAZA LANDSCAPE WORKS

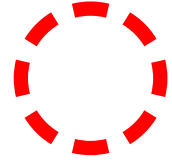
REV.	DATE	STATUS	INITIALS
A	15/01/19	SSDA	EP



LEGEND



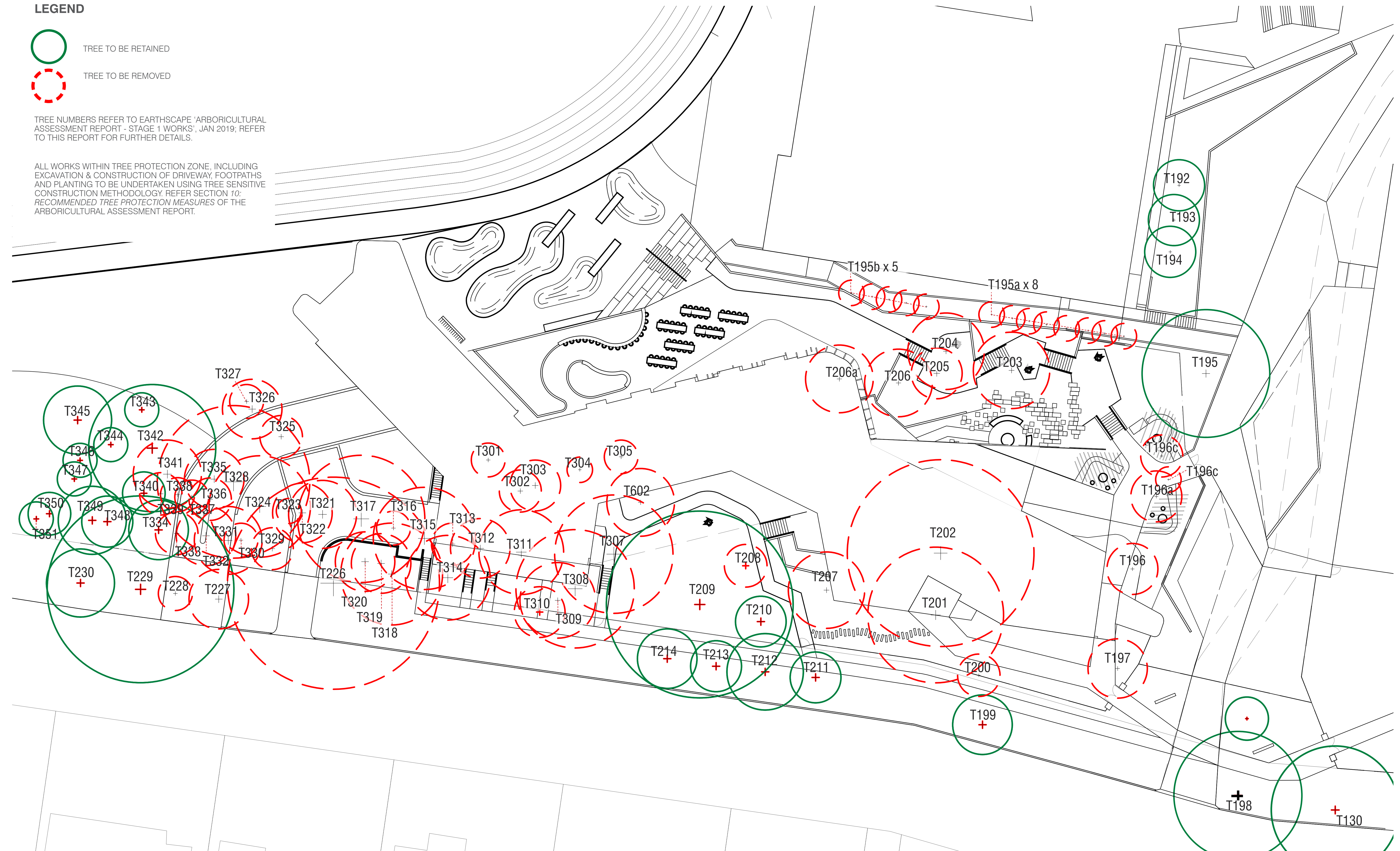
TREE TO BE RETAINED



TREE TO BE REMOVED

TREE NUMBERS REFER TO EARTHSCAPE 'ARBORICULTURAL ASSESSMENT REPORT - STAGE 1 WORKS', JAN 2019; REFER TO THIS REPORT FOR FURTHER DETAILS.

ALL WORKS WITHIN TREE PROTECTION ZONE, INCLUDING EXCAVATION & CONSTRUCTION OF DRIVEWAY, FOOTPATHS AND PLANTING TO BE UNDERTAKEN USING TREE SENSITIVE CONSTRUCTION METHODOLOGY. REFER SECTION 10: RECOMMENDED TREE PROTECTION MEASURES OF THE ARBORICULTURAL ASSESSMENT REPORT.



O C U L U S

level 1 , 5 Wilson St / newtown nsw 2042
p. 02 9557 5533 sydney@oculus.info



loretonormanhurst

AJ+C
ALLEN JACK+C

REV	DATE	STATUS	INITIALS
A	15/01/19	SSDA	EP

STAGE 1 WORKS
LORETO NORMANHURST

TREE PROTECTION & REMOVAL PLAN

job no.: S18-031
date:15.01.19

1:200@A1

L-100

A

landscape architect

client

architect

revision

project

drawing title

drawing information

drawing number

V.

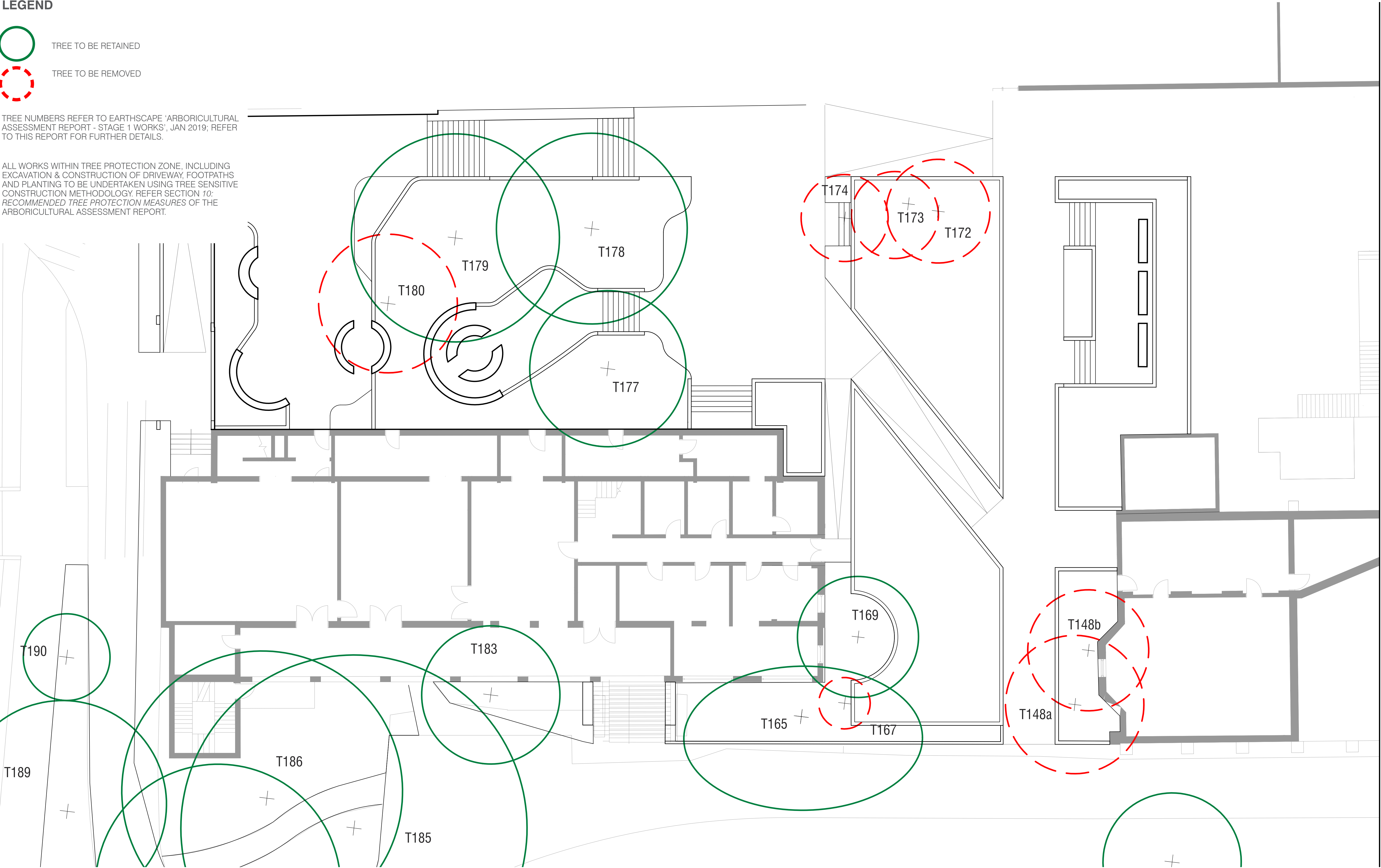
MARY WARD COURTYARD TREE RETENTION & REMOVAL PLAN

LEGEND

- TREE TO BE RETAINED
- TREE TO BE REMOVED

TREE NUMBERS REFER TO EARTHSCAPE 'ARBORICULTURAL ASSESSMENT REPORT - STAGE 1 WORKS', JAN 2019; REFER TO THIS REPORT FOR FURTHER DETAILS.

ALL WORKS WITHIN TREE PROTECTION ZONE, INCLUDING EXCAVATION & CONSTRUCTION OF DRIVEWAY, FOOTPATHS AND PLANTING TO BE UNDERTAKEN USING TREE SENSITIVE CONSTRUCTION METHODOLOGY. REFER SECTION 10: RECOMMENDED TREE PROTECTION MEASURES OF THE ARBORICULTURAL ASSESSMENT REPORT.



REV	DATE	STATUS	INITIALS
A	15/01/19	SSDA	EP

BOARDING SCHOOL LANDSCAPE ZONING PLAN (GROUND LEVEL)

LEGEND

ZONE 1 FRONT GARDENS

ZONE 2 KITCHEN TERRACE

ZONE 3 TERRACED GARDENS

ZONE 4 SUNKEN GARDEN

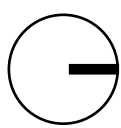
ZONE 5 OVAL DINING TERRACE

ZONE 6 GARDEN PLAZA

REFER L-103 FOR DESIGN INTENT OF EACH OF THE DIFFERENT ZONES



REV.	DATE	STATUS	INITIALS
A	15/01/19	SSDA	EP



BOARDING SCHOOL LANDSCAPE ZONING PLAN (ROOF LEVEL)

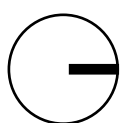
LEGEND

- ZONE 7 ROOF TERRACE
- ZONE 8 EXTENSIVE ROOF GARDEN

REFER L-103 FOR DESIGN INTENT OF EACH OF THE DIFFERENT ZONES



REV.	DATE	STATUS	INITIALS
A	15/01/19	SSDA	EP



LANDSCAPE ZONING - DESIGN INTENT

ZONE 1 - FRONT GARDENS



- Gardenesque arrival experience
- Inviting and exciting
- Naturalistic planting
- Simple hardscape elements
- Residential scale space

ZONE 4 - SUNKEN GARDEN



- Gas fire pit feature
- Outdoor classroom / story telling space
- Enclosed private space for the boarders only
- Unusal native plant combinations
- Sculpted mounding
- Sandstone 'escarpment' / amphitheatre

ZONE 7 - ROOF TERRACE



- Intimate space for relaxation
- Informal gathering, reading and chatting
- Timber soft surfaces
- Residential scale space
- Wistful planting palette
- Outdoor cinema screen

ZONE 2 - KITCHEN TERRACE



- Abstracted 'escarpment' typology
- Square sandstone logs
- Timber bench seats
- Minimalist space
- Simple paving
- Simple paving at grade and in raised planters
- Block seating for transitional moments

ZONE 5 - OVAL DINING TERRACE



- Outlook across the oval
- Adaptable furniture for flexible use
- Small feature trees to provide shade
- Clean lines and simple paving
- Area for group activities

ZONE 8 - EXTENSIVE ROOF GARDEN



- Low hardy ground covers
- Maintenance access only

ZONE 3 - TERRACED GARDENS



- Terraced seating areas
- Sculpture walk with rest areas
- Bold & unusual planting form and textures
- Abstracted 'escarpment' typology
- Sharp contrast between textures and forms
- Outdoor classroom spaces

ZONE 6 - GARDEN PLAZA



- Large angular lawn areas
- Wide paths for multiple use
- Feature trees to provide shade
- Clean lines and simple paving
- Area for group activities

ZONE 9 - MARY WARD



- Terraced seating areas
- Large shade trees to be retained
- Large formal lawn area