



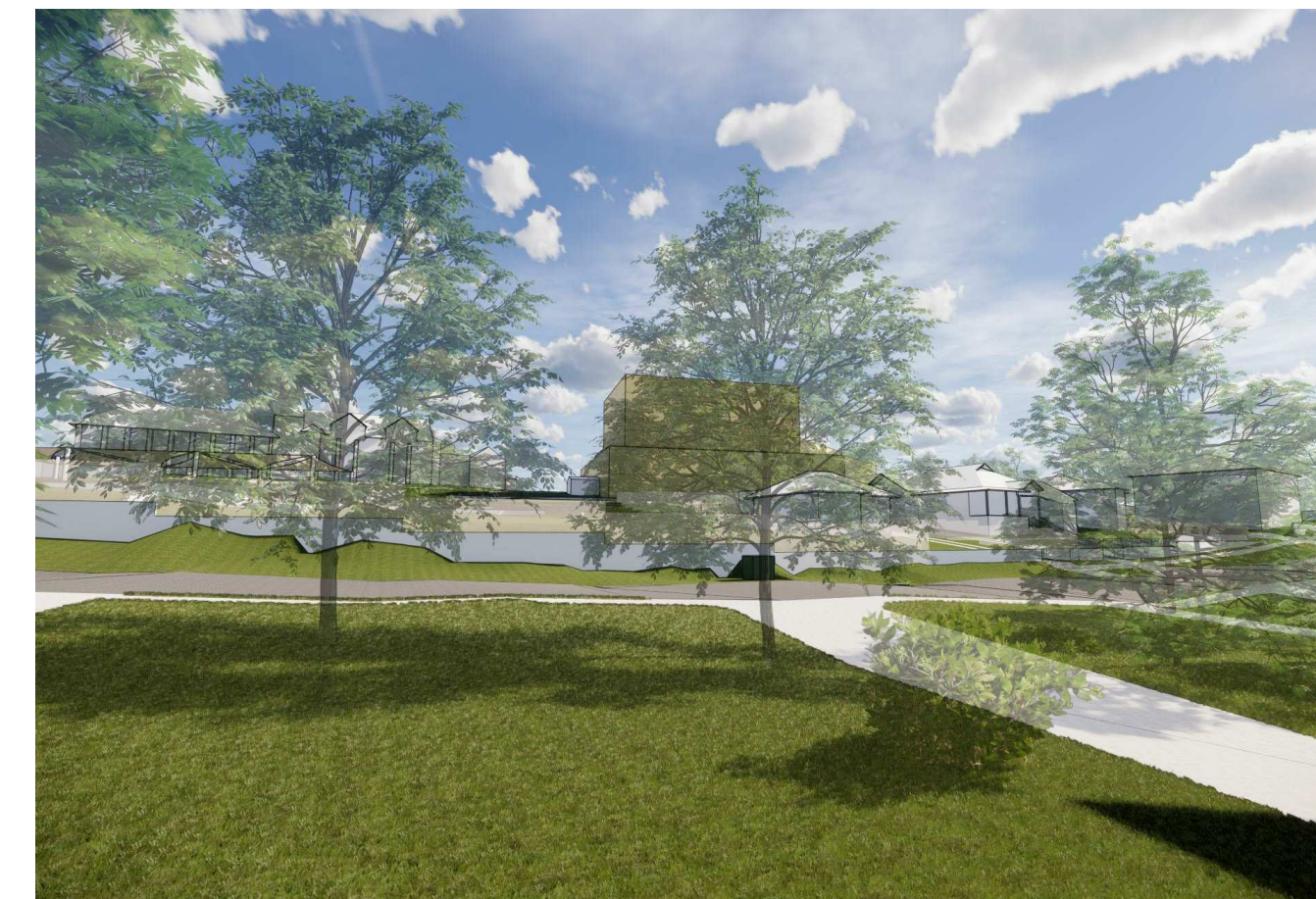




VIEW FROM FRONT OF 15 MOUNT PLEASANT AVENUE  
TOWARDS DEVELOPMENT ENVELOPE 3



VIEW FROM FRONT OF 17 MOUNT PLEASANT AVENUE  
TOWARDS DEVELOPMENT ENVELOPE 3



VIEW FROM FRONT OF 19 MOUNT PLEASANT AVENUE  
TOWARDS DEVELOPMENT ENVELOPE 3



VIEW FROM FRONT OF 21 MOUNT PLEASANT AVENUE  
TOWARDS DEVELOPMENT ENVELOPE 3



VIEW FROM FRONT OF 23 MOUNT PLEASANT AVENUE  
TOWARDS DEVELOPMENT ENVELOPE 3



VIEW FROM FRONT OF 25 MOUNT PLEASANT AVENUE  
TOWARDS DEVELOPMENT ENVELOPE 3

Revisions No.	Date	Description	Ver	App'd
1	31.05.2019	ENVIRONMENTAL AMENITY - VIEW IMPACT ASSESSMENT		

	Key
--	-----

---

Client  
LORETO NORMANHURST

Architect	
-----------	--

Project	LORETO NORMANHUURST
---------	---------------------

Drawing Title  
VIEW IMPACT ANALYSIS

Scale	Drawing No.	Issue
	A0000	1

244x44 APA





VIEW FROM REAR OF 4 MOUNT PLEASANT AVENUE  
TOWARDS DEVELOPMENT ENVELOPE 3





VIEW FROM REAR OF 2A MOUNT PLEASANT AVENUE  
TOWARDS DEVELOPMENT ENVELOPE 3



VIEW FROM REAR OF 89 PENNANT HILLS ROAD  
TOWARDS DEVELOPMENT ENVELOPE 3



VIEW FROM LEVEL 5 OF ENVELOPE 3  
TOWARDS MOUNT PLEASANT AVENUE

Revisions No. Date Description Ver App'd 1 31.05.2019 ENVIRONMENTAL AMENITY - VIEW IMPACT ASSESSMENT	Client LORETO NORMANHURST 	Architect  ALLEN JACK+COTTIER 79 Myrtle Street Chippendale NSW 2008 AUSTRALIA ph +61 2 9311 8222 fx +61 2 9311 8200 ABN 53 003 782 250	Project LORETO NORMANHURST CONCEPT PROPOSAL 91-93 PENNANT HILLS ROAD NORMANHURST, NSW 2076 Proj. No. 18008	Drawing Title VIEW IMPACT ANALYSIS - ENVELOPE 3 - SHEET 3 Sheet Status NOT FOR CONSTRUCTION	Scale Drawing No. A0024 Issue 1
------------------------------------------------------------------------------------------------------------	-----------------------------------------------------------------------------------------------------------------------	--------------------------------------------------------------------------------------------------------------------------------------------------------------------------------------------------------------------------------------------	---------------------------------------------------------------------------------------------------------------------------	---------------------------------------------------------------------------------------------------------	---------------------------------------------