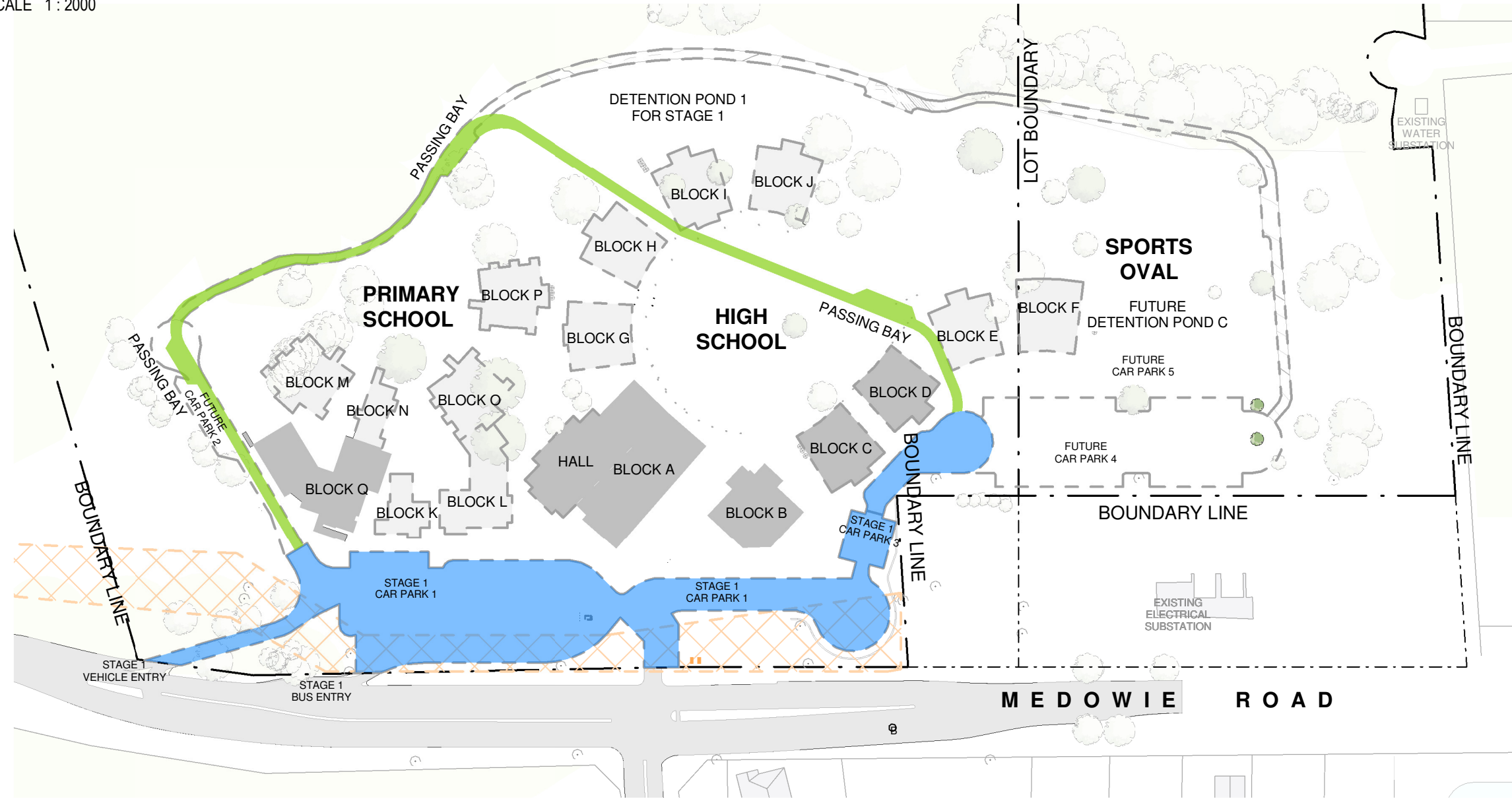
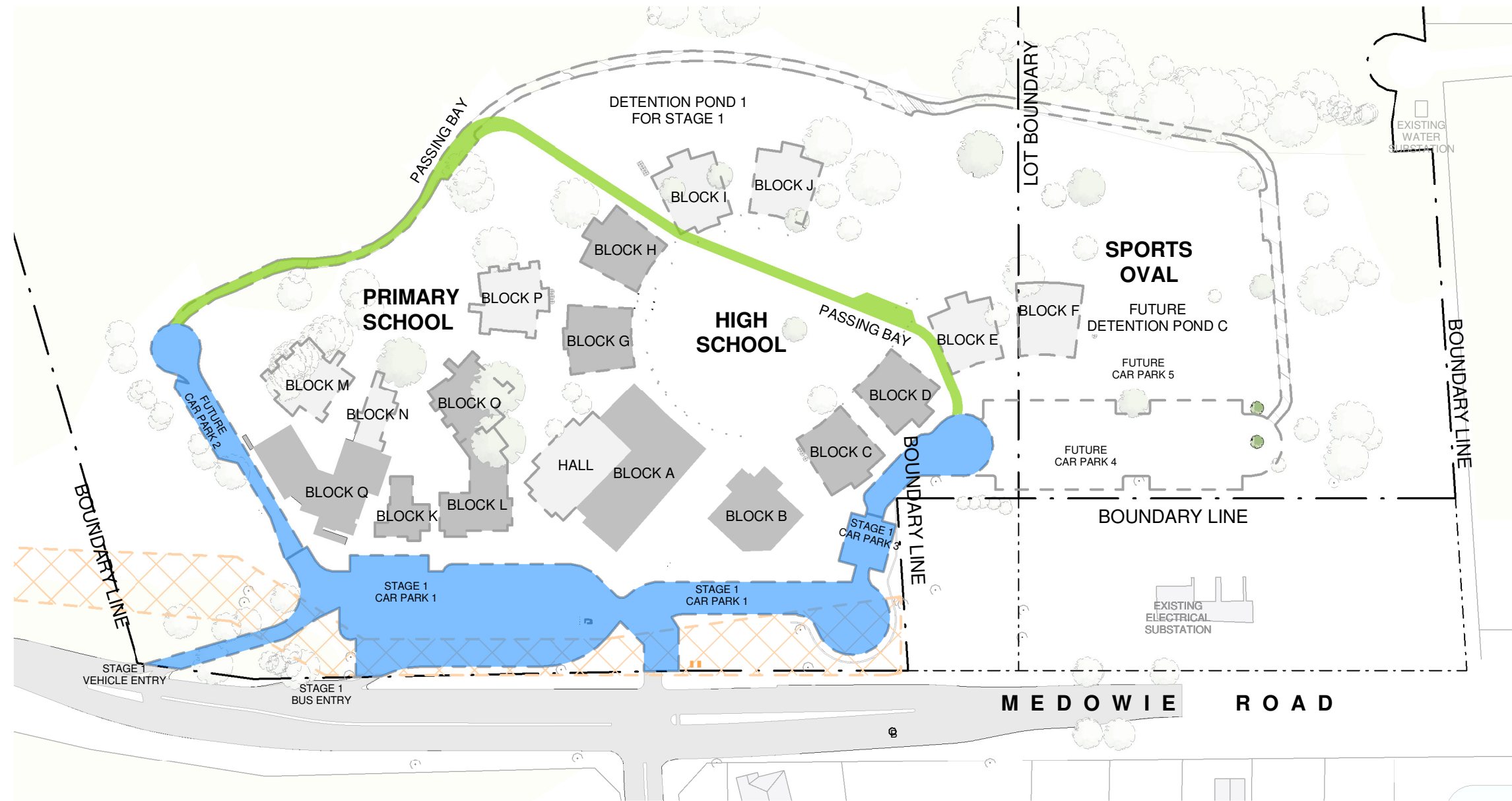


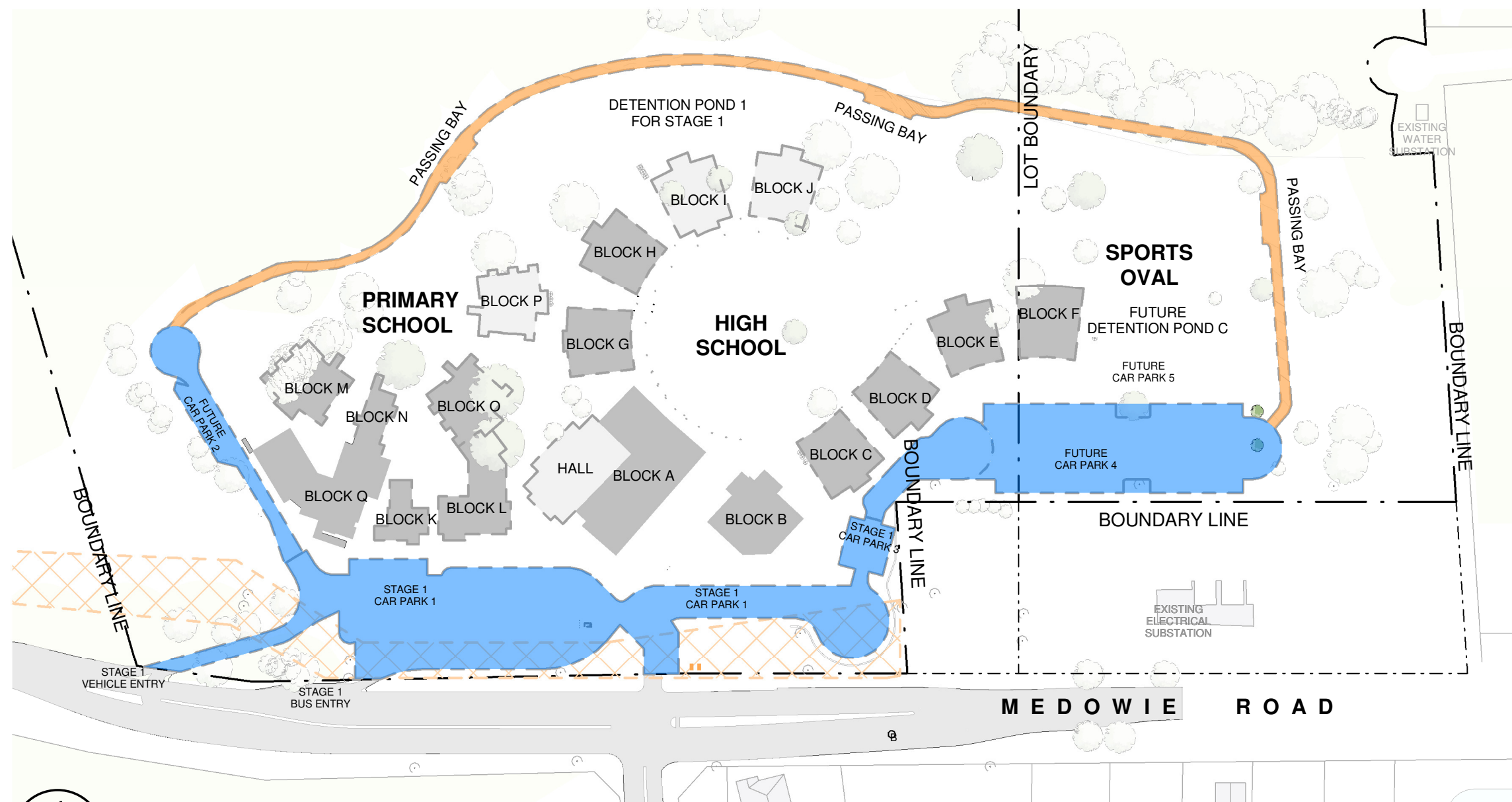
1 SITE FIRE TRAIL - STAGE 1
04_0001 SCALE 1:2000



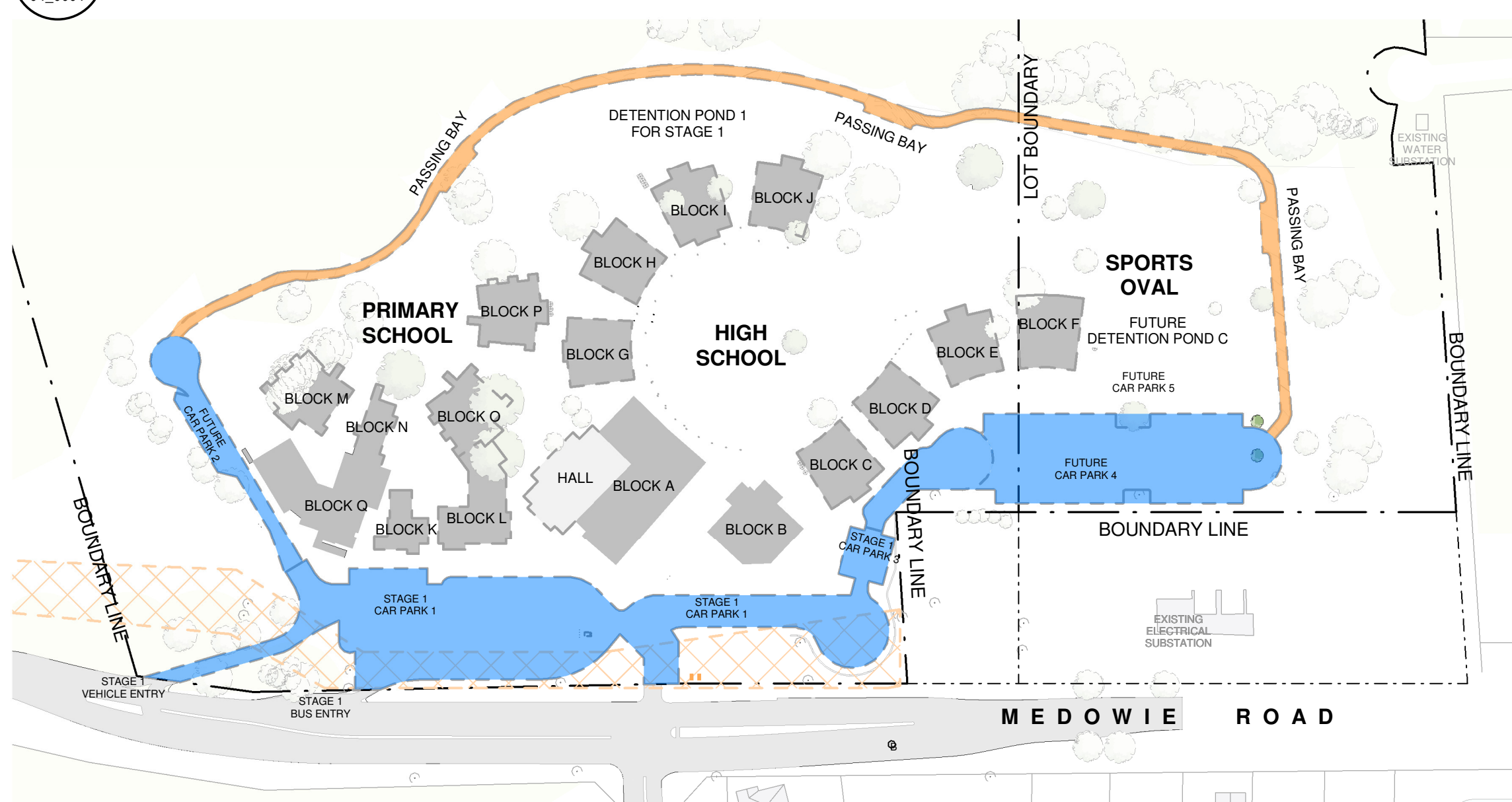
2 SITE FIRE TRAIL - STAGE 2
04_0001 SCALE 1:2000



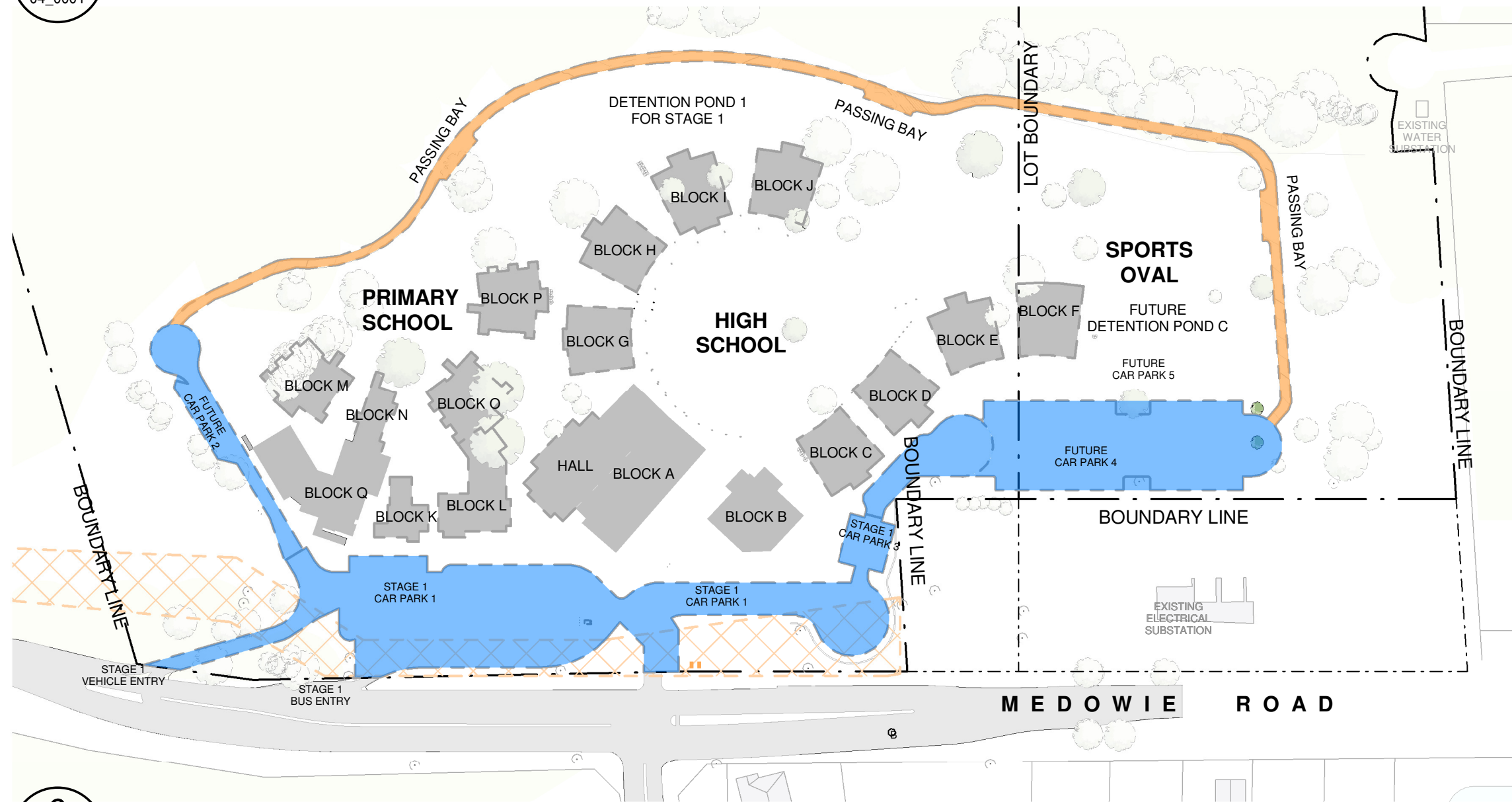
3 SITE FIRE TRAIL - STAGE 3
04_0001 SCALE 1:2000



4 SITE FIRE TRAIL - STAGE 4
04_0001 SCALE 1:2000



5 SITE FIRE TRAIL - STAGE 5
04_0001 SCALE 1:2000



6 SITE FIRE TRAIL - STAGE 6
04_0001 SCALE 1:2000

- FUTURE STRUCTURE / BUILDING
- PROPOSED STRUCTURE / BUILDING
- PROPOSED VEHICLE ROAD / CAR PARK
- 4M WIDE COMPRESSED GRASS TEMPORARY FIRE TRAIL (UNSEALED) WITH 10° FALL MAX. & 1M BUSH CLEARANCE EACH SIDE OF TRAIL. PASSING BAY EVERY 200M.
- 4M WIDE COMPRESSED GRAVEL FIRE TRAIL WITH 15° GRADE MAX. & 1M BUSH CLEARANCE EACH SIDE OF TRAIL. PASSING BAY EVERY 200M.

SITE LEGEND - FIRE TRAIL STAGING

REV	DATE	DESCRIPTION	BY	CHK
A	28.09.2018	RESPONSE TO SUBMISSIONS	LK	

BUILDER TO CONFIRM ALL DETAILS, SETOUTS (TILE, ETC.), FALLS & CONNECTIONS ON SITE BEFORE CONSTRUCTION

PRINT DATE: 26/10/2018 11:03:44 AM FILE PATH: T:\Revit Local\2544 Medowie Catholic School_LukeH\JSD.rvt



webberarchitects
commercial and residential

Suite 3, Level 1 486 Hunter St Newcastle • PO Box 807 The Junction 2291
t: +612 4924 1078 • fax: +612 4924 1078
newcastle@webberarchitects.com • www.webberarchitects.com

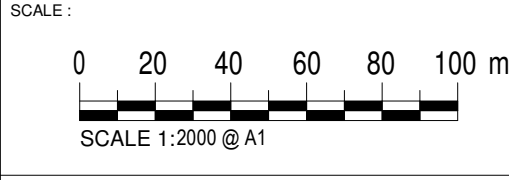
Directors: Jon Webster (Principal Architect) AIA, NSW APB NO. 6830
Sandra Storchy, Karen Brooks
Associates: Tim Hynes, Luke Keating

SITE FIRE TRIAL STAGING

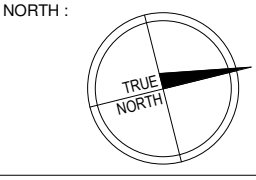
CATHERINE MCAULEY CATHOLIC COLLEGE
507 MEDOWIE ROAD, MEDOWIE

ISSUED:
PRELIMINARY ONLY
NOT FOR CONSTRUCTION

PROJECT COMMENCEMENT DATE: 01.05.2017



SHEET NUMBER: **2544_02_0035_A**



This drawing and the design expressed are copyright and remain the property of Webber Architects. In accordance with the commonwealth copyright act 1968 this drawing and design in whole or part may not be used unless licensed by Webber Architects. Verify all dimensions and falls on site before construction and do not scale from drawing.