



Planning &
Environment

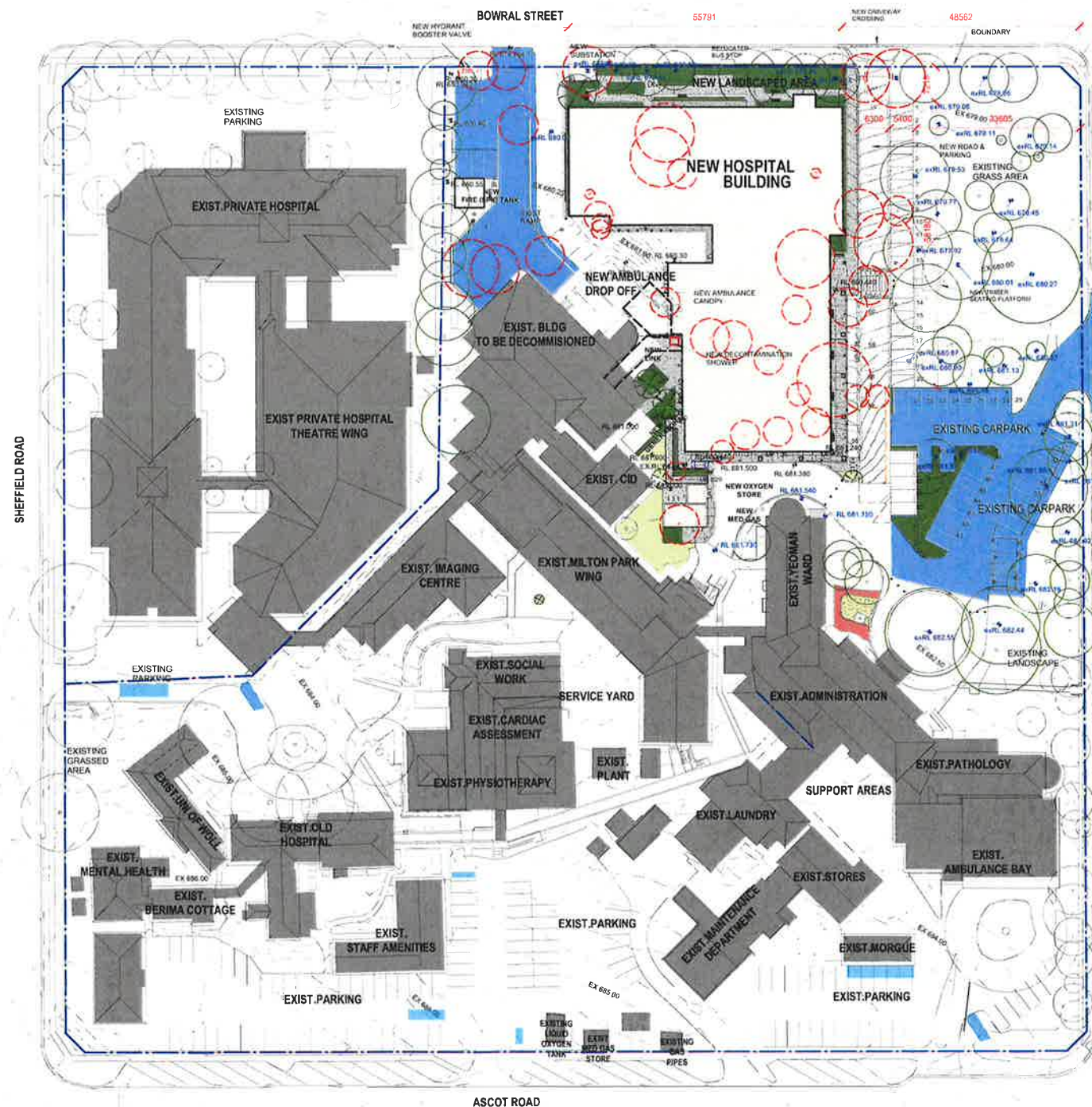
Issued under the Environmental Planning and Assessment Act 1979

Approved Application No. SSD 8980

granted on the 21 February 2019

Signed [Signature]

Sheet No. 1 of 27



SITE LEGEND	
[Symbol]	BOUNDARY
[Symbol]	EX 679.00 EXISTING CONTOUR
[Symbol]	NEW CONTOUR
[Symbol]	NEW SPOT LEVEL
[Symbol]	EXISTING SPOT LEVEL
[Symbol]	EXISTING TREE
[Symbol]	TREE TO BE REMOVED
[Symbol]	NEW TREE
[Symbol]	EXISTING LAWN TO BE MAINTAINED
[Symbol]	NEW LAWN
[Symbol]	NEW LANDSCAPE PLANTING
[Symbol]	NEW DECOMPOSED GRANITE PATH
[Symbol]	NEW CONCRETE PATH
[Symbol]	NEW DRIVEWAY / PARKING
[Symbol]	CAR PARKING
[Symbol]	NEW BUILDING AND SUPPORT SERVICE STRUCTURES
[Symbol]	EXISTING CONCRETE PATHS, DRIVEWAYS & LANDSCAPE
[Symbol]	EXISTING BUILDINGS TO BE RETAINED
[Symbol]	NEW SEAT
[Symbol]	NEW BOLLARD
[Symbol]	NEW BIKERACK

AMENDMENTS	
REV	DESCRIPTION
1	ISSUED FOR TENDERS

ARCHITECT



CLIENT



PROJECT MANAGER



PROJECT

BOWRAL & DISTRICT HOSPITAL REDEVELOPMENT

97-103 BOWRAL ST.,
BOWRAL NSW 2576

DRAWING NUMBER

130443-MSJ-AR-DWG-MW01025

DRAWING NAME

SITE PLAN SHOWING EW STAGE

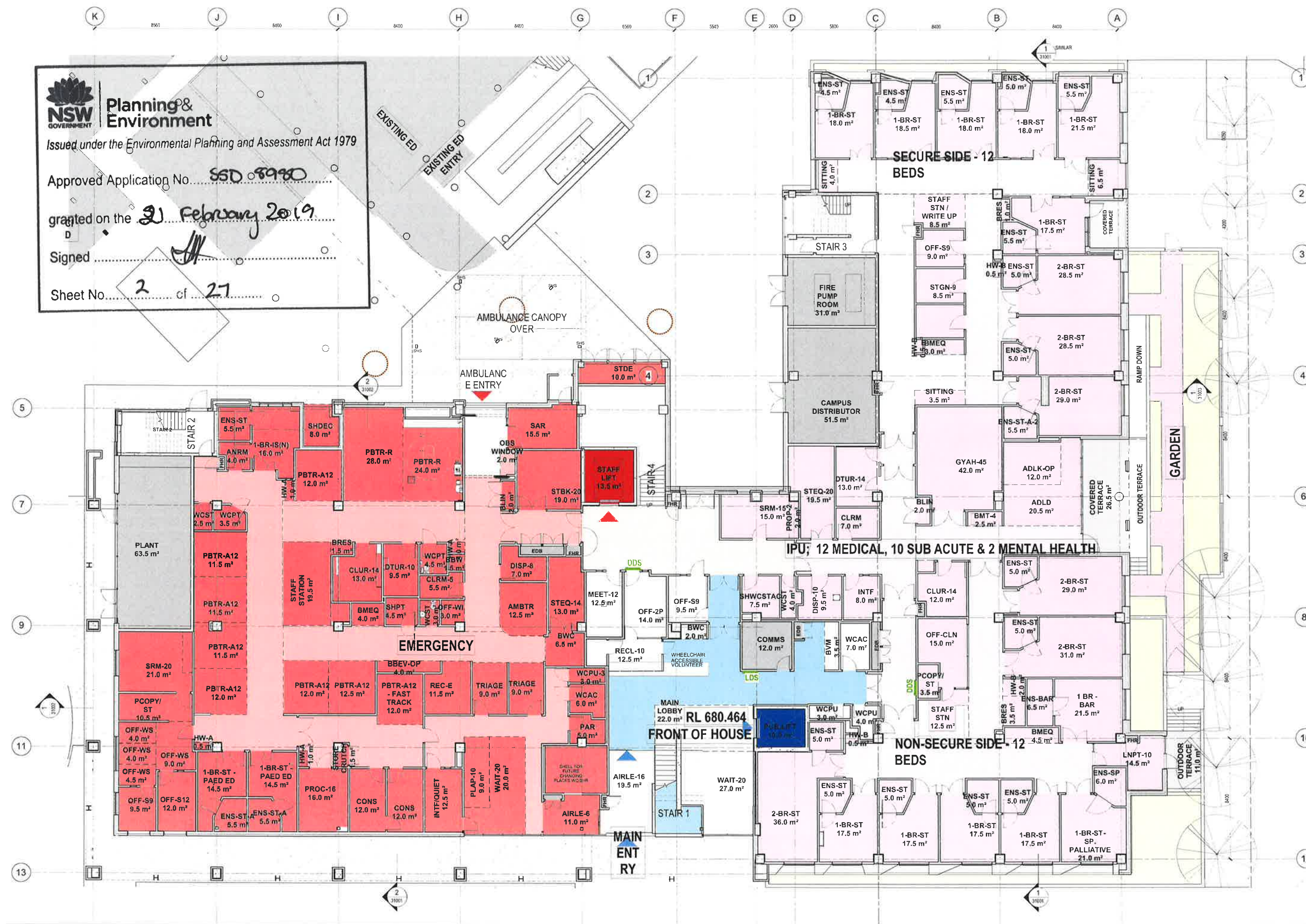
REV

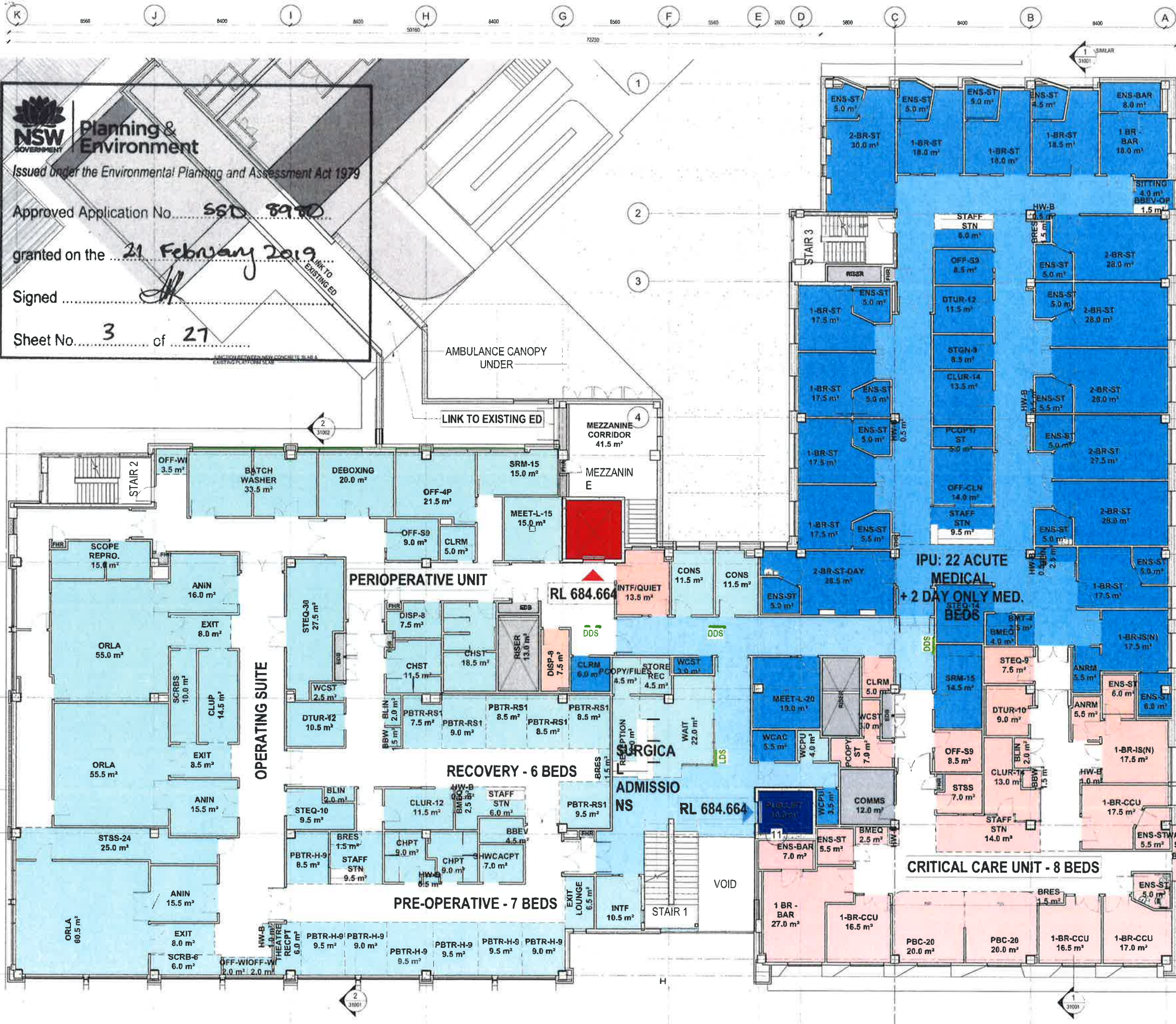
1

0m 10m 20m 30m 40m 50m
SCALE 1:500 @ B1

ISSUE DATE

20/12/18





NSW GOVERNMENT
Planning & Environment
Issued under the Environmental Planning and Assessment Act 1979
Approved Application No. 560 8910
granted on the 21 February 2019
Signed [Signature]
Sheet No. 3 of 27

- WAYFINDING LEGEND**
- Department Directional Sign - Wall-fixed or Free Standing
 - Department Directional Sign - Ceiling Hung
 - Lobby Directional Sign

- Dept. Legend**
- ACUTE MEDICAL CIRCULATION
 - ACUTE MEDICAL IPU
 - CCU
 - CCU CIRCULATION
 - EMERGENCY
 - EMERGENCY CIRCULATION
 - FRONT OF HOUSE
 - MATERNITY UNIT
 - MATERNITY UNIT CIRCULATION
 - MEDICAL, MENTAL HEALTH AND SUB ACUTE IPU
 - MEDICAL, MENTAL HEALTH AND SUB ACUTE IPU CIRCULATION
 - OUTDOOR
 - PAEDIATRIC UNIT
 - PAEDIATRIC UNIT CIRCULATION
 - PERIOPERATIVE
 - PERIOPERATIVE CIRCULATION
 - Plant
 - PUBLIC CIRCULATION
 - STAFF CIRCULATION
 - TRAVEL AND ENGINEERING - FIRE STAIRS
 - TRAVEL AND ENGINEERING - PUBLIC CIRCULATION
 - TRAVEL AND ENGINEERING - STAFF CIRCULATION

AMENDMENTS

NO.	DATE	BY	REVISION
1	10/07/18	MSJ	ISSUED FOR TENDERS
2	10/07/18	MSJ	ISSUED FOR TENDERS
3	10/07/18	MSJ	ISSUED FOR TENDERS
4	10/07/18	MSJ	ISSUED FOR TENDERS
5	10/07/18	MSJ	ISSUED FOR TENDERS
6	10/07/18	MSJ	ISSUED FOR TENDERS
7	10/07/18	MSJ	ISSUED FOR TENDERS
8	10/07/18	MSJ	ISSUED FOR TENDERS
9	10/07/18	MSJ	ISSUED FOR TENDERS
10	10/07/18	MSJ	ISSUED FOR TENDERS
11	10/07/18	MSJ	ISSUED FOR TENDERS
12	10/07/18	MSJ	ISSUED FOR TENDERS
13	10/07/18	MSJ	ISSUED FOR TENDERS
14	10/07/18	MSJ	ISSUED FOR TENDERS
15	10/07/18	MSJ	ISSUED FOR TENDERS
16	10/07/18	MSJ	ISSUED FOR TENDERS
17	10/07/18	MSJ	ISSUED FOR TENDERS
18	10/07/18	MSJ	ISSUED FOR TENDERS
19	10/07/18	MSJ	ISSUED FOR TENDERS
20	10/07/18	MSJ	ISSUED FOR TENDERS
21	10/07/18	MSJ	ISSUED FOR TENDERS
22	10/07/18	MSJ	ISSUED FOR TENDERS
23	10/07/18	MSJ	ISSUED FOR TENDERS
24	10/07/18	MSJ	ISSUED FOR TENDERS
25	10/07/18	MSJ	ISSUED FOR TENDERS
26	10/07/18	MSJ	ISSUED FOR TENDERS
27	10/07/18	MSJ	ISSUED FOR TENDERS

ARCHITECT: **MSJ**
CLIENT: **NSW Health Infrastructure**
PROJECT MANAGER: **MSJ**

BOWRAL & DISTRICT HOSPITAL REDEVELOPMENT
97-103 BOWRAL ST.,
BOWRAL NSW 2576

DRAWING NUMBER: **130443-MSJ-AR-DWG-MW03002**
DRAWING NAME: **LEVEL 1 PLAN**



NSW GOVERNMENT
Planning & Environment
Issued under the Environmental Planning and Assessment Act 1979
Approved Application No. **SSD 8940**
granted on the **21 February 2019**
Signed *[Signature]*
Sheet No. **4** of **27**

- WAYFINDING LEGEND**
- Department Directional Sign - Wall-fixed or Free Standing
 - Department Directional Sign - Ceiling Hung
 - Lobby Directional Sign

Dept. Legend

- 2 ACUTE MEDICAL CIRCULATION
- ACUTE MEDICAL IPU
- CCU
- 3 CCU CIRCULATION
- EMERGENCY
- EMERGENCY CIRCULATION
- FRONT OF HOUSE
- MATERNITY UNIT
- MATERNITY UNIT CIRCULATION
- 4 MEDICAL, MENTAL HEALTH AND SUB ACUTE IPU
- MEDICAL, MENTAL HEALTH AND SUB ACUTE IPU CIRCULATION
- 6 OUTDOOR
- PAEDIATRIC UNIT
- PAEDIATRIC UNIT CIRCULATION
- PERIOPERATIVE
- PERIOPERATIVE CIRCULATION
- 8 Plant
- PUBLIC CIRCULATION
- STAFF CIRCULATION
- TRAVEL AND ENGINEERING - FIRE STAIRS
- TRAVEL AND ENGINEERING - PUBLIC CIRCULATION
- 10 TRAVEL AND ENGINEERING - STAFF CIRCULATION

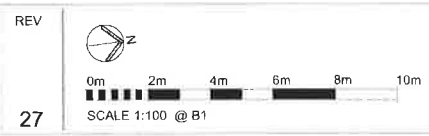
AMENDMENTS

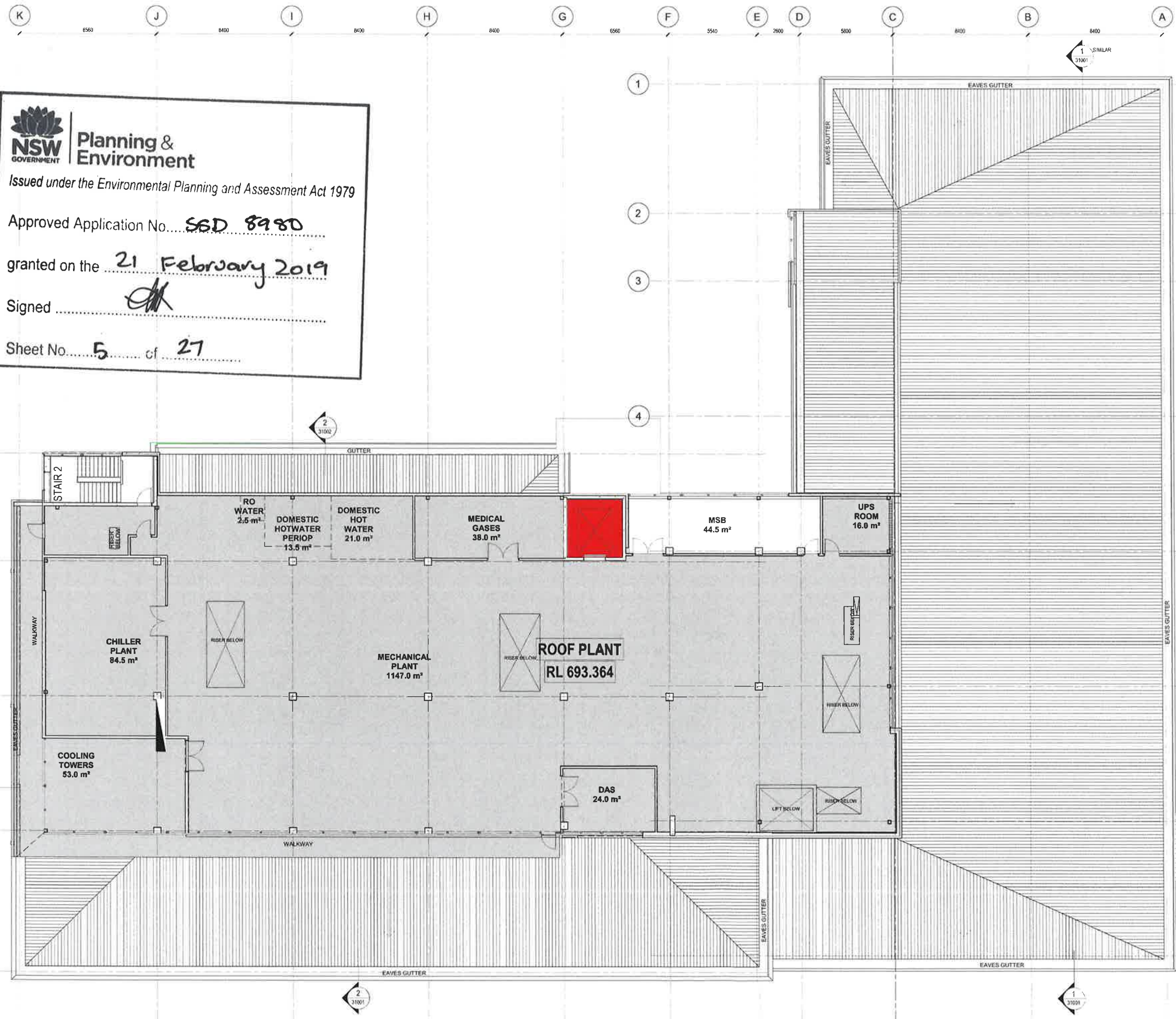
NO.	DATE	DESCRIPTION
1	10/07/18	ISSUED FOR TENDER
2	10/07/18	ISSUED FOR TENDER
3	10/07/18	ISSUED FOR TENDER
4	10/07/18	ISSUED FOR TENDER
5	10/07/18	ISSUED FOR TENDER
6	10/07/18	ISSUED FOR TENDER
7	10/07/18	ISSUED FOR TENDER
8	10/07/18	ISSUED FOR TENDER
9	10/07/18	ISSUED FOR TENDER
10	10/07/18	ISSUED FOR TENDER
11	10/07/18	ISSUED FOR TENDER
12	10/07/18	ISSUED FOR TENDER
13	10/07/18	ISSUED FOR TENDER
14	10/07/18	ISSUED FOR TENDER
15	10/07/18	ISSUED FOR TENDER
16	10/07/18	ISSUED FOR TENDER
17	10/07/18	ISSUED FOR TENDER
18	10/07/18	ISSUED FOR TENDER
19	10/07/18	ISSUED FOR TENDER
20	10/07/18	ISSUED FOR TENDER
21	10/07/18	ISSUED FOR TENDER
22	10/07/18	ISSUED FOR TENDER
23	10/07/18	ISSUED FOR TENDER
24	10/07/18	ISSUED FOR TENDER
25	10/07/18	ISSUED FOR TENDER
26	10/07/18	ISSUED FOR TENDER
27	10/07/18	ISSUED FOR TENDER

ARCHITECT: **MSI**
CLIENT: **NSW Health Infrastructure**
PROJECT MANAGER: **COOPER WRIGHT**

BOWRAL & DISTRICT HOSPITAL REDEVELOPMENT
97-103 BOWRAL ST.,
BOWRAL NSW 2576

DRAWING NUMBER
130443-MSJ-AR-DWG-MW03003
DRAWING NAME
LEVEL 2 PLAN





NSW GOVERNMENT | **Planning & Environment**
Issued under the Environmental Planning and Assessment Act 1979
Approved Application No. S6D 8980
granted on the 21 February 2019
Signed [Signature]
Sheet No. 5 of 27

AMENDMENTS	
REV	DESCRIPTION
1	ISSUED FOR TENDERS
2	ISSUED FOR TENDERS
3	ISSUED FOR TENDERS
4	ISSUED FOR TENDERS
5	ISSUED FOR TENDERS
6	ISSUED FOR TENDERS
7	ISSUED FOR TENDERS
8	ISSUED FOR TENDERS
9	ISSUED FOR TENDERS
10	ISSUED FOR TENDERS
11	ISSUED FOR TENDERS
12	ISSUED FOR TENDERS
13	ISSUED FOR TENDERS

ARCHITECT
MSI

CLIENT
NSW Health Infrastructure

PROJECT MANAGER
CRENSHAW


PROJECT
BOWRAL & DISTRICT HOSPITAL REDEVELOPMENT
97-103 BOWRAL ST.,
BOWRAL NSW 2576

DRAWING NUMBER
130443-MSJ-AR-DWG-MW03004
DRAWING NAME
LEVEL 3 PLAN

REV
23
0m 2m 4m 6m 8m 10m
SCALE 1:100 @ B1



ISSUE DATE
13/07/18



Planning & Environment

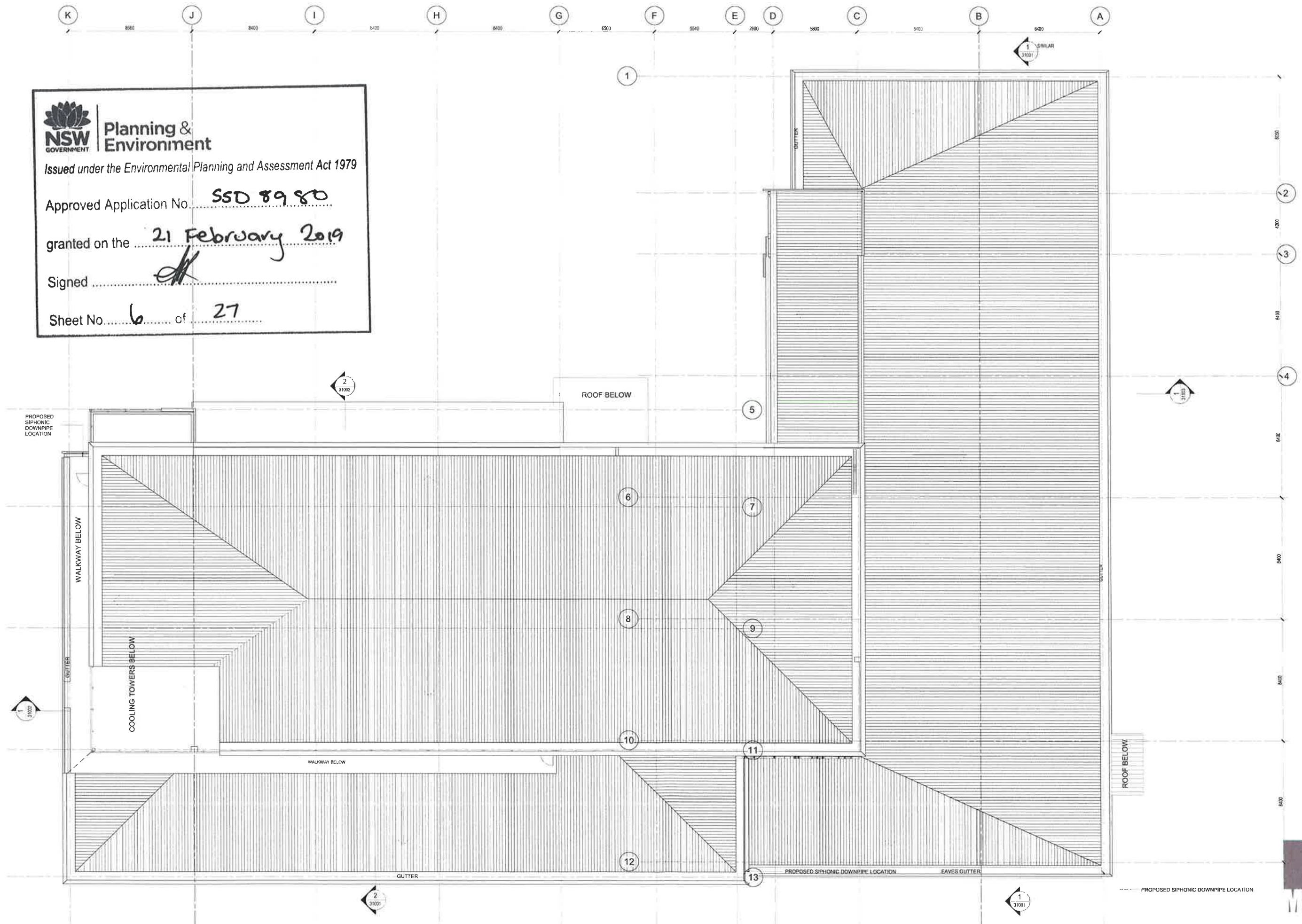
Issued under the Environmental Planning and Assessment Act 1979

Approved Application No. SSD 8980

granted on the 21 February 2019

Signed [Signature]

Sheet No. 6 of 27



AMENDMENTS	DATE	BY	REASON
1	13/07/18	MSJ	ISSUED FOR TENDERS
2	13/07/18	MSJ	ISSUED FOR TENDERS
3	13/07/18	MSJ	ISSUED FOR TENDERS
4	13/07/18	MSJ	ISSUED FOR TENDERS
5	13/07/18	MSJ	ISSUED FOR TENDERS
6	13/07/18	MSJ	ISSUED FOR TENDERS
7	13/07/18	MSJ	ISSUED FOR TENDERS
8	13/07/18	MSJ	ISSUED FOR TENDERS
9	13/07/18	MSJ	ISSUED FOR TENDERS
10	13/07/18	MSJ	ISSUED FOR TENDERS
11	13/07/18	MSJ	ISSUED FOR TENDERS
12	13/07/18	MSJ	ISSUED FOR TENDERS
13	13/07/18	MSJ	ISSUED FOR TENDERS

ARCHITECT

MSJ

CLIENT

NSW Health Infrastructure

PROJECT MANAGER

COVE insight

PROJECT

BOWRAL & DISTRICT HOSPITAL REDEVELOPMENT

97-103 BOWRAL ST.,
BOWRAL NSW 2576

DRAWING NUMBER
130443-MSJ-AR-DWG-MW03005

DRAWING NAME
ROOF PLAN

REV

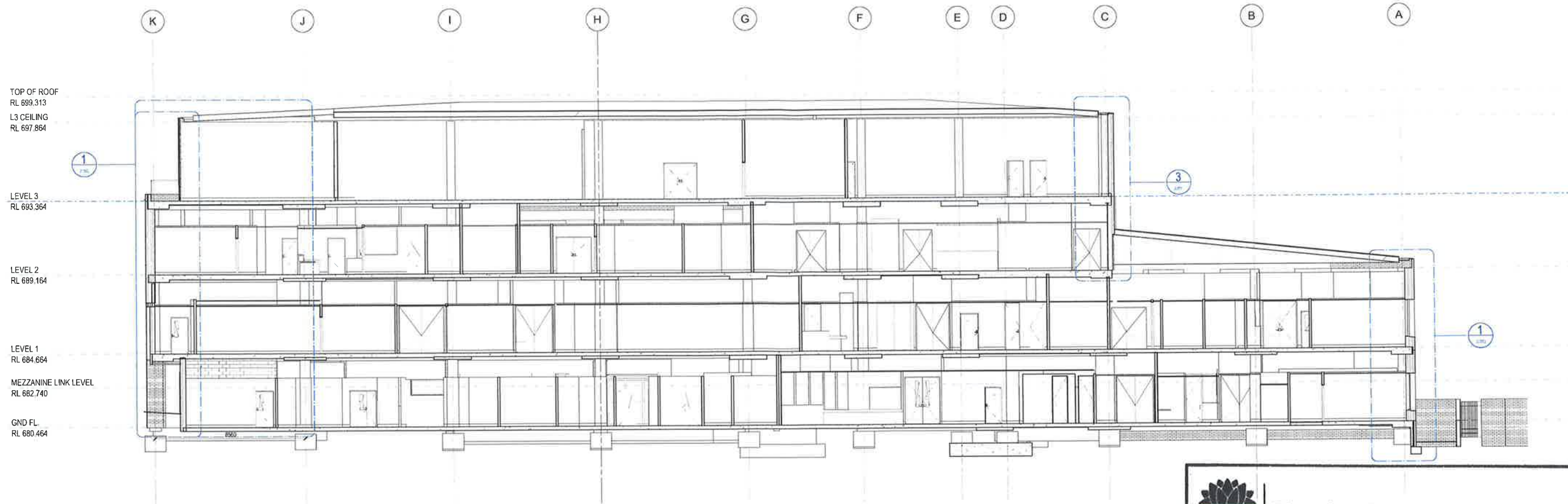
11

0m 2m 4m 6m 8m 10m

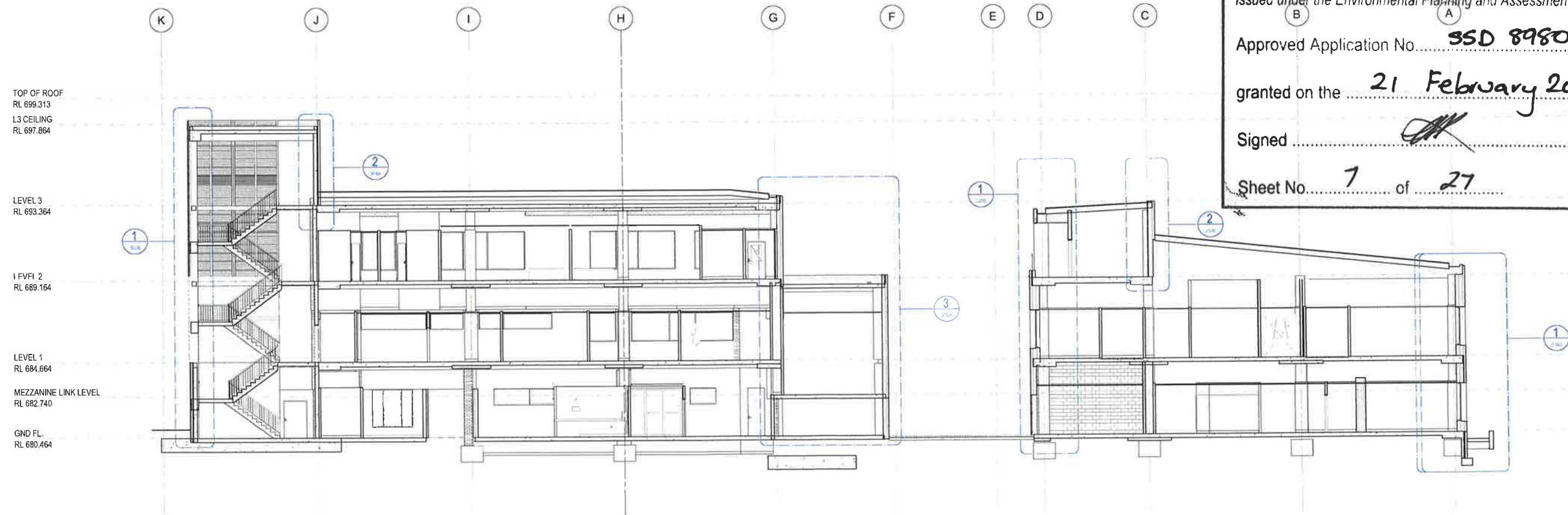
SCALE 1:100 @ B1

ISSUE DATE

13/07/18



A SECTION A BETWEEN GRIDS 9 & 10
1:100



B SECTION B BETWEEN GRIDS 4 & 5 AND 5 & 6
1:100



**Planning &
Environment**

Issued under the Environmental Planning and Assessment Act 1979

Approved Application No. **SSD 8980**

granted on the **21 February 2019**

Signed 

Sheet No. **7** of **27**

AMENDMENTS	DATE	BY	REASON
1	2018	MSJ	REVISIONS
2	2018	MSJ	REVISIONS
3	2018	MSJ	REVISIONS
4	2018	MSJ	REVISIONS
5	2018	MSJ	REVISIONS
6	2018	MSJ	REVISIONS
7	2018	MSJ	REVISIONS
8	2018	MSJ	REVISIONS
9	2018	MSJ	REVISIONS
10	2018	MSJ	REVISIONS



**Health
Infrastructure**



PROJECT

BOWRAL & DISTRICT HOSPITAL REDEVELOPMENT

97-103 BOWRAL ST.,
BOWRAL NSW 2576

DRAWING NUMBER
130443-MSJ-AR-DWG-MW25001

DRAWING NAME
OVERALL SECTIONS- SHEET 1

REV

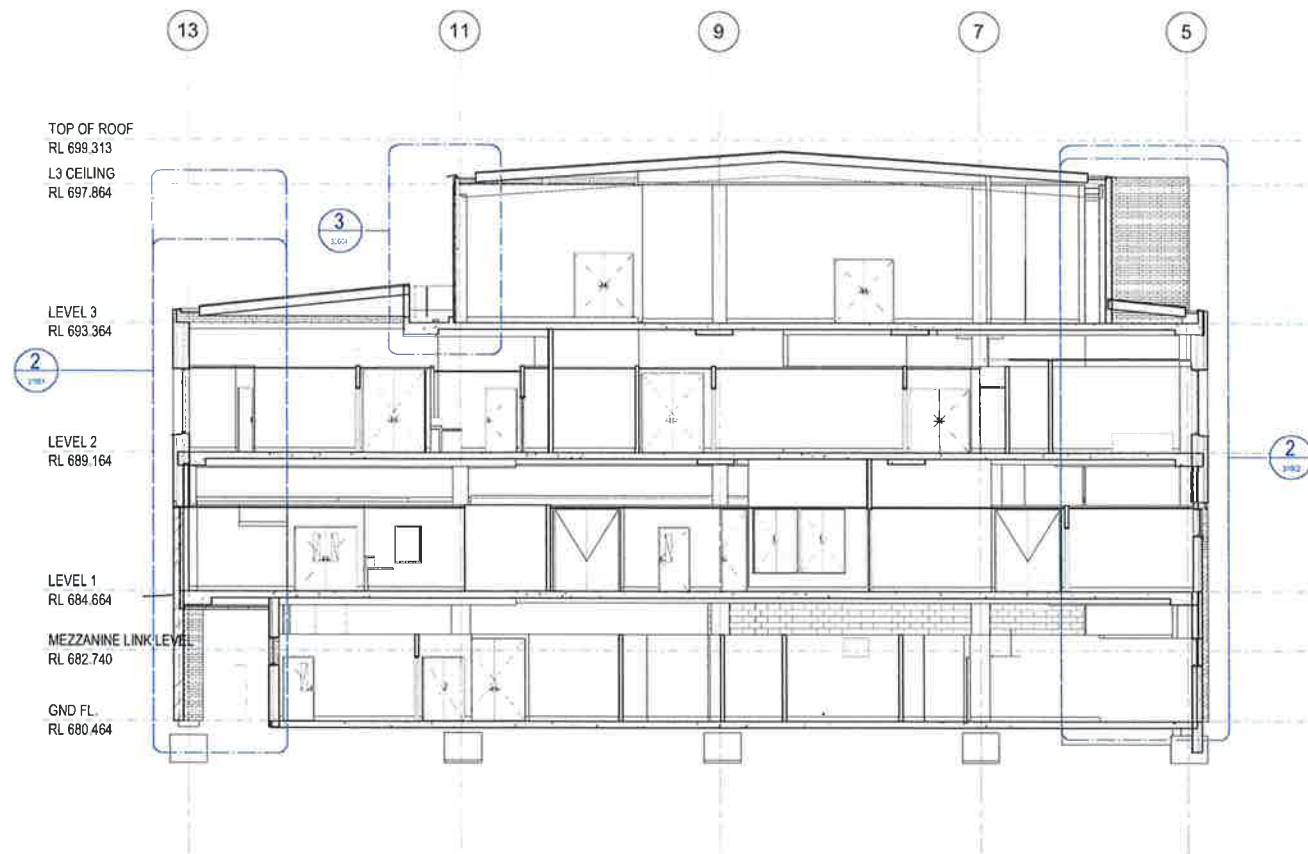


0m 2m 4m 6m 8m 10m
SCALE 1:100 @ B1

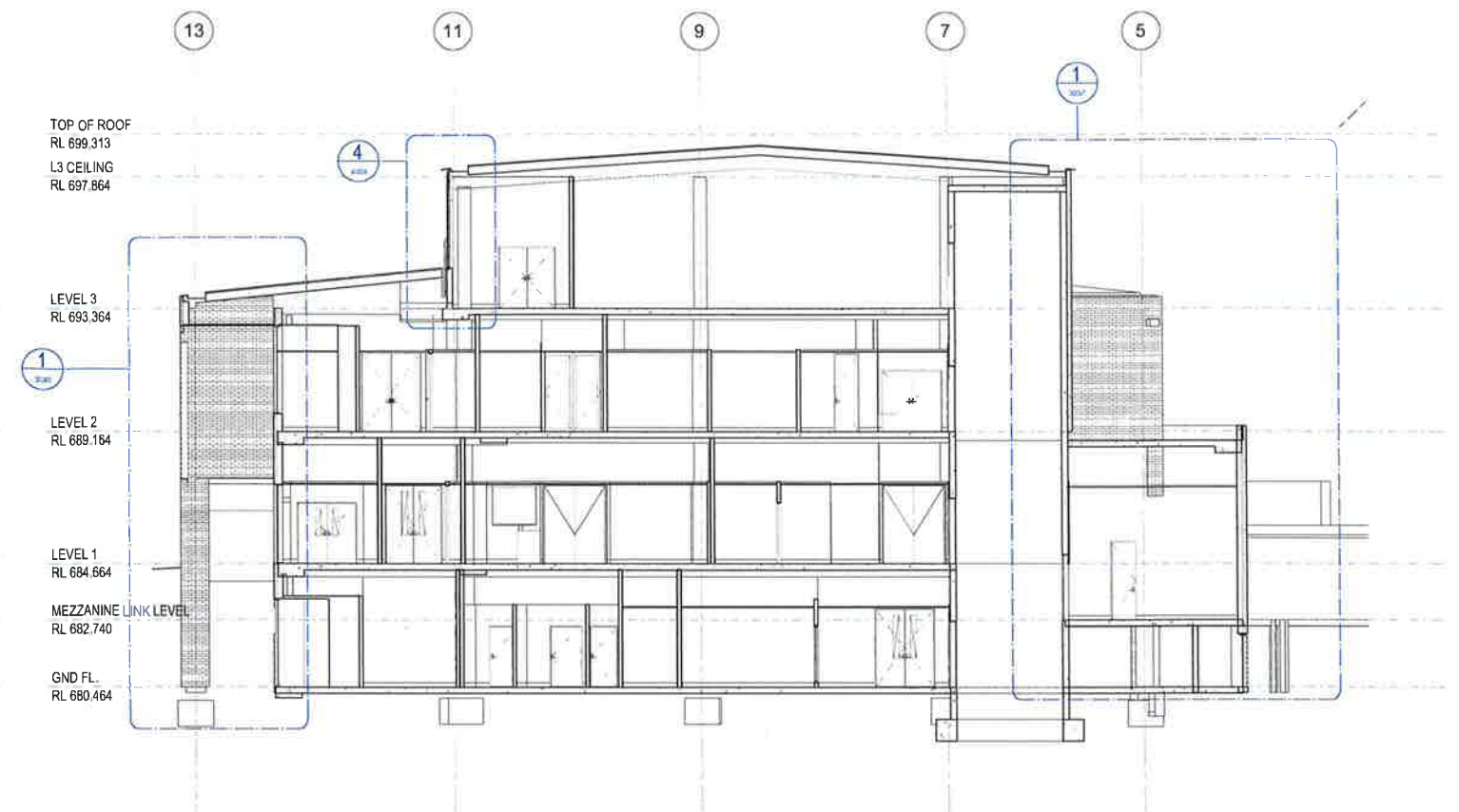
4

ISSUE DATE

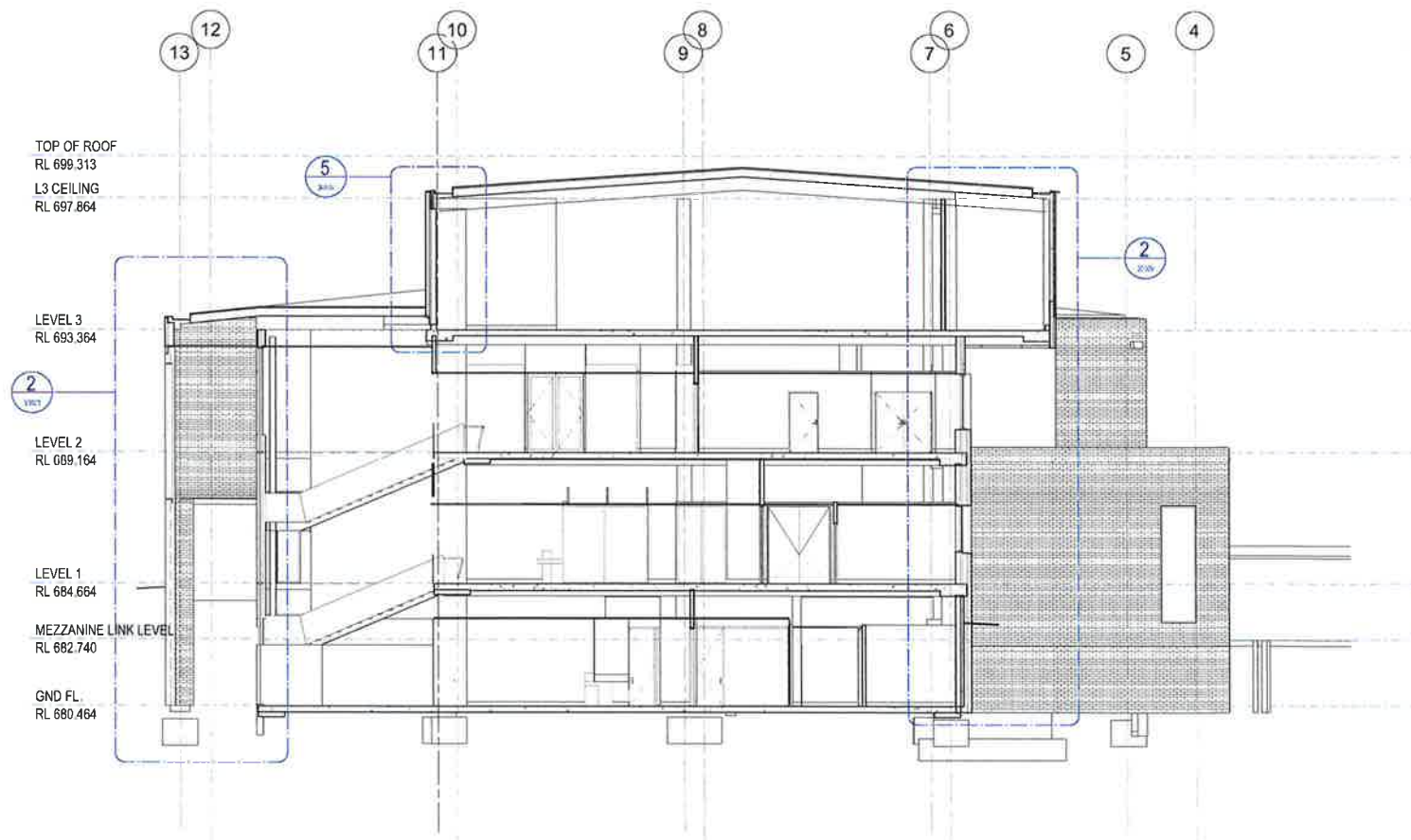
25/07/18



C SECTION C BETWEEN GRIDS H & I
1:100



D SECTION D BETWEEN GRIDS F & G
1:100



E SECTION E BETWEEN GRIDS E & F
1:100

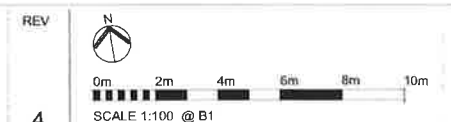


AMENDMENTS	DATE	BY	REASON
1	20/01/18	NSI	Initial Design
2	20/01/18	NSI	Initial Design
3	20/01/18	NSI	Initial Design
4	20/01/18	NSI	Initial Design

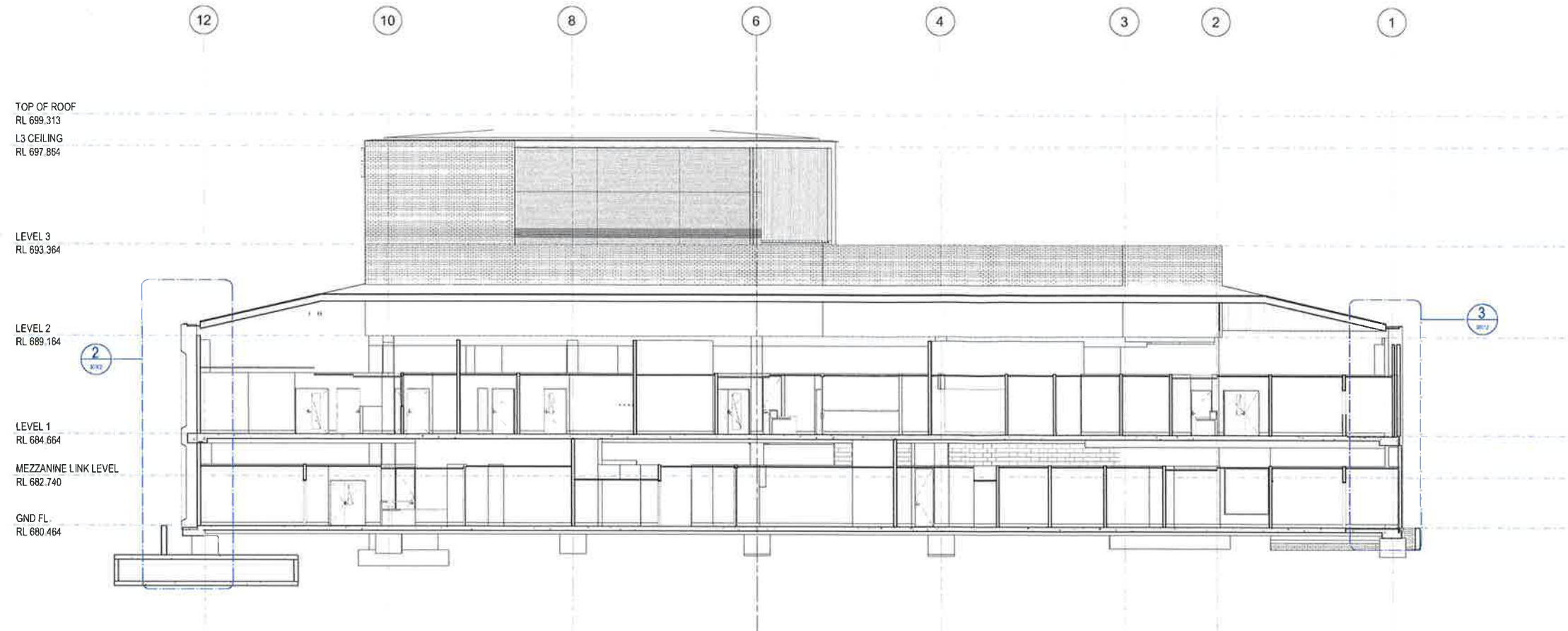


PROJECT
BOWRAL & DISTRICT HOSPITAL REDEVELOPMENT
97-103 BOWRAL ST.,
BOWRAL NSW 2576

DRAWING NUMBER
130443-MSJ-AR-DWG-MW25002
DRAWING NAME
OVERALL SECTIONS - SHEET 2



ISSUE DATE
25/07/18



F SECTION F BETWEEN GRIDS B & C
1:100

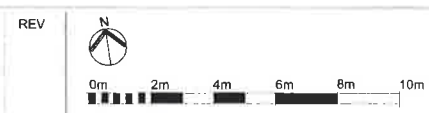
NSW GOVERNMENT | **Planning & Environment**
 Issued under the Environmental Planning and Assessment Act 1979
 Approved Application No. **SSD 8980**
 granted on the **21 February 2019**
 Signed *[Signature]*
 Sheet No. **9** of **27**

AMENDMENTS	DATE	BY	REASON
1	2018	NSW	Initial Design
2	2018	NSW	Design Development
3	2018	NSW	Final Design

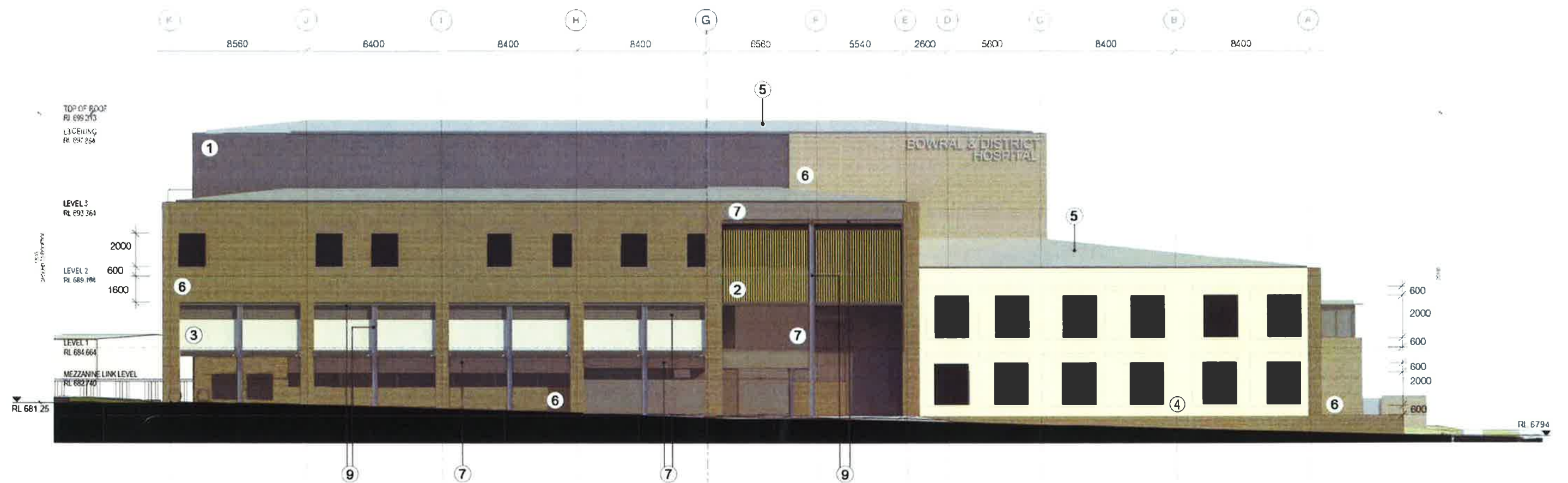


PROJECT
BOWRAL & DISTRICT HOSPITAL REDEVELOPMENT
 97-103 BOWRAL ST.,
 BOWRAL NSW 2576

DRAWING NUMBER
 130443-MSJ-AR-DWG-MW25003
DRAWING NAME
 OVERALL SECTIONS SHEET 3



ISSUE DATE
 25/07/18



1		Aluminium Louvers Powdercoat finish to match Colorbond Colour Woodland Grey	4		FC Cladding Blue board cladding with polymer render finish with integral acrylic colour equal to Rockcote	7		Metal Cladding Type 2 Aluminium Fire Rated Material Colour Equal to Alpolic M7817 Light Mid Bronze
2		Timber Look-alike Screen Innwood sections in 'Spotted Gum' colour, sanded finish	5		Roof & Gutters Lysaght Klip-Lok 700 profile roof deck 0.48 BMT Colorbond Colour Woodland Grey	8		Zinc Metal Cladding
3		Metal Cladding Type 1 Aluminium Fire Rated Material Colour Equal to Colorbond Galactic Metallic	6		Masonry Walls CSR/PGH Dry Pressed Extruded 'Copper Glow'	9		Steel Column & Linels

NSW GOVERNMENT | **Planning & Environment**

Issued under the Environmental Planning and Assessment Act 1979

Approved Application No. **SSD 8480**

granted on the **21 February 2014**

Signed

Sheet No. **10** of **27**

AMENDMENTS

NO.	DESCRIPTION	DATE
1	ISSUED	14/08/18

ARCHITECT



CLIENT



PROJECT MANAGER



PROJECT

BOWRAL & DISTRICT HOSPITAL REDEVELOPMENT
97-103 BOWRAL ST.,
BOWRAL NSW 2576

DRAWING NUMBER

130443-MSJ-AR-DWG-MW20003

DRAWING NAME

EAST ELEVATION - DD

REV

15

ISSUE DATE

14/08/18

0m 2m 4m 6m 8m 10m
SCALE 1:250 @ A3



Planning &
Environment

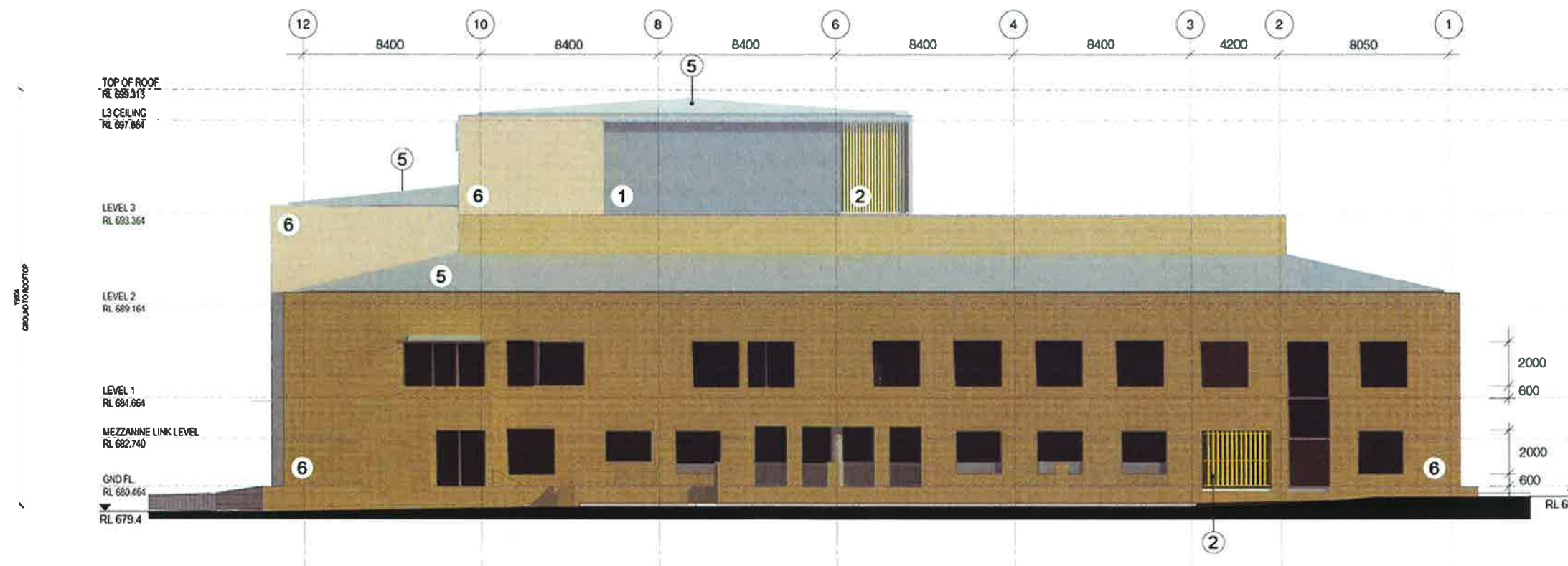
Issued under the Environmental Planning and Assessment Act 1979

Approved Application No. SSD 8980

granted on the 21 February 2019

Signed [Signature]

Sheet No. 11 of 27



1		Aluminium Louvres Powdercoat finish to match Colorbond Colour: Woodland Grey	4		FC Cladding Blue board cladding with polymer render finish with integral acrylic colour equal to Rockcote	7		Metal Cladding Type 2 Aluminium Fire Rated Material. Colour: Equal to Alpolic M7817 Light Mid Bronze
2		Timber Look-alike Screen Innwood sections in 'Spotted Gum' colour, sanded finish	5		Roof & Gutters Lysaght Klip-Lok 700 profile roof deck 0.48 BMT. Colorbond Colour: 'Woodland Grey'	8		Zinc Metal Cladding
3		Metal Cladding Type 1 Aluminium Fire Rated Material. Colour: Equal to Colorbond 'Galactic' Metallic	6		Masonry Walls CSR/PGH Dry Pressed Extruded 'Copper Glow'	9		Steel Column & Lintels

AMENDMENTS

NO.	DESCRIPTION	DATE
1	ISSUED FOR TENDERS	14/08/18
2	REVISED TO REFLECT APPROVED APPLICATION	21/02/19
3	REVISED TO REFLECT APPROVED APPLICATION	21/02/19
4	REVISED TO REFLECT APPROVED APPLICATION	21/02/19
5	REVISED TO REFLECT APPROVED APPLICATION	21/02/19
6	REVISED TO REFLECT APPROVED APPLICATION	21/02/19
7	REVISED TO REFLECT APPROVED APPLICATION	21/02/19
8	REVISED TO REFLECT APPROVED APPLICATION	21/02/19
9	REVISED TO REFLECT APPROVED APPLICATION	21/02/19
10	REVISED TO REFLECT APPROVED APPLICATION	21/02/19
11	REVISED TO REFLECT APPROVED APPLICATION	21/02/19
12	REVISED TO REFLECT APPROVED APPLICATION	21/02/19
13	REVISED TO REFLECT APPROVED APPLICATION	21/02/19
14	REVISED TO REFLECT APPROVED APPLICATION	21/02/19
15	REVISED TO REFLECT APPROVED APPLICATION	21/02/19
16	REVISED TO REFLECT APPROVED APPLICATION	21/02/19
17	REVISED TO REFLECT APPROVED APPLICATION	21/02/19
18	REVISED TO REFLECT APPROVED APPLICATION	21/02/19
19	REVISED TO REFLECT APPROVED APPLICATION	21/02/19
20	REVISED TO REFLECT APPROVED APPLICATION	21/02/19
21	REVISED TO REFLECT APPROVED APPLICATION	21/02/19
22	REVISED TO REFLECT APPROVED APPLICATION	21/02/19
23	REVISED TO REFLECT APPROVED APPLICATION	21/02/19
24	REVISED TO REFLECT APPROVED APPLICATION	21/02/19
25	REVISED TO REFLECT APPROVED APPLICATION	21/02/19
26	REVISED TO REFLECT APPROVED APPLICATION	21/02/19
27	REVISED TO REFLECT APPROVED APPLICATION	21/02/19
28	REVISED TO REFLECT APPROVED APPLICATION	21/02/19
29	REVISED TO REFLECT APPROVED APPLICATION	21/02/19
30	REVISED TO REFLECT APPROVED APPLICATION	21/02/19
31	REVISED TO REFLECT APPROVED APPLICATION	21/02/19
32	REVISED TO REFLECT APPROVED APPLICATION	21/02/19
33	REVISED TO REFLECT APPROVED APPLICATION	21/02/19
34	REVISED TO REFLECT APPROVED APPLICATION	21/02/19
35	REVISED TO REFLECT APPROVED APPLICATION	21/02/19
36	REVISED TO REFLECT APPROVED APPLICATION	21/02/19
37	REVISED TO REFLECT APPROVED APPLICATION	21/02/19
38	REVISED TO REFLECT APPROVED APPLICATION	21/02/19
39	REVISED TO REFLECT APPROVED APPLICATION	21/02/19
40	REVISED TO REFLECT APPROVED APPLICATION	21/02/19
41	REVISED TO REFLECT APPROVED APPLICATION	21/02/19
42	REVISED TO REFLECT APPROVED APPLICATION	21/02/19
43	REVISED TO REFLECT APPROVED APPLICATION	21/02/19
44	REVISED TO REFLECT APPROVED APPLICATION	21/02/19
45	REVISED TO REFLECT APPROVED APPLICATION	21/02/19
46	REVISED TO REFLECT APPROVED APPLICATION	21/02/19
47	REVISED TO REFLECT APPROVED APPLICATION	21/02/19
48	REVISED TO REFLECT APPROVED APPLICATION	21/02/19
49	REVISED TO REFLECT APPROVED APPLICATION	21/02/19
50	REVISED TO REFLECT APPROVED APPLICATION	21/02/19
51	REVISED TO REFLECT APPROVED APPLICATION	21/02/19
52	REVISED TO REFLECT APPROVED APPLICATION	21/02/19
53	REVISED TO REFLECT APPROVED APPLICATION	21/02/19
54	REVISED TO REFLECT APPROVED APPLICATION	21/02/19
55	REVISED TO REFLECT APPROVED APPLICATION	21/02/19
56	REVISED TO REFLECT APPROVED APPLICATION	21/02/19
57	REVISED TO REFLECT APPROVED APPLICATION	21/02/19
58	REVISED TO REFLECT APPROVED APPLICATION	21/02/19
59	REVISED TO REFLECT APPROVED APPLICATION	21/02/19
60	REVISED TO REFLECT APPROVED APPLICATION	21/02/19
61	REVISED TO REFLECT APPROVED APPLICATION	21/02/19
62	REVISED TO REFLECT APPROVED APPLICATION	21/02/19
63	REVISED TO REFLECT APPROVED APPLICATION	21/02/19
64	REVISED TO REFLECT APPROVED APPLICATION	21/02/19
65	REVISED TO REFLECT APPROVED APPLICATION	21/02/19
66	REVISED TO REFLECT APPROVED APPLICATION	21/02/19
67	REVISED TO REFLECT APPROVED APPLICATION	21/02/19
68	REVISED TO REFLECT APPROVED APPLICATION	21/02/19
69	REVISED TO REFLECT APPROVED APPLICATION	21/02/19
70	REVISED TO REFLECT APPROVED APPLICATION	21/02/19
71	REVISED TO REFLECT APPROVED APPLICATION	21/02/19
72	REVISED TO REFLECT APPROVED APPLICATION	21/02/19
73	REVISED TO REFLECT APPROVED APPLICATION	21/02/19
74	REVISED TO REFLECT APPROVED APPLICATION	21/02/19
75	REVISED TO REFLECT APPROVED APPLICATION	21/02/19
76	REVISED TO REFLECT APPROVED APPLICATION	21/02/19
77	REVISED TO REFLECT APPROVED APPLICATION	21/02/19
78	REVISED TO REFLECT APPROVED APPLICATION	21/02/19
79	REVISED TO REFLECT APPROVED APPLICATION	21/02/19
80	REVISED TO REFLECT APPROVED APPLICATION	21/02/19
81	REVISED TO REFLECT APPROVED APPLICATION	21/02/19
82	REVISED TO REFLECT APPROVED APPLICATION	21/02/19
83	REVISED TO REFLECT APPROVED APPLICATION	21/02/19
84	REVISED TO REFLECT APPROVED APPLICATION	21/02/19
85	REVISED TO REFLECT APPROVED APPLICATION	21/02/19
86	REVISED TO REFLECT APPROVED APPLICATION	21/02/19
87	REVISED TO REFLECT APPROVED APPLICATION	21/02/19
88	REVISED TO REFLECT APPROVED APPLICATION	21/02/19
89	REVISED TO REFLECT APPROVED APPLICATION	21/02/19
90	REVISED TO REFLECT APPROVED APPLICATION	21/02/19
91	REVISED TO REFLECT APPROVED APPLICATION	21/02/19
92	REVISED TO REFLECT APPROVED APPLICATION	21/02/19
93	REVISED TO REFLECT APPROVED APPLICATION	21/02/19
94	REVISED TO REFLECT APPROVED APPLICATION	21/02/19
95	REVISED TO REFLECT APPROVED APPLICATION	21/02/19
96	REVISED TO REFLECT APPROVED APPLICATION	21/02/19
97	REVISED TO REFLECT APPROVED APPLICATION	21/02/19
98	REVISED TO REFLECT APPROVED APPLICATION	21/02/19
99	REVISED TO REFLECT APPROVED APPLICATION	21/02/19
100	REVISED TO REFLECT APPROVED APPLICATION	21/02/19

ARCHITECT



CLIENT



PROJECT MANAGER



PROJECT

BOWRAL & DISTRICT HOSPITAL REDEVELOPMENT
97-103 BOWRAL ST.,
BOWRAL NSW 2576

DRAWING NUMBER
130443-MSJ-AR-DWG-MW20001

DRAWING NAME
NORTH ELEVATION - DD

REV

15

ISSUE DATE

14/08/18

0m 2m 4m 6m 8m 10m
SCALE 1:250 @ A3



Planning &
Environment

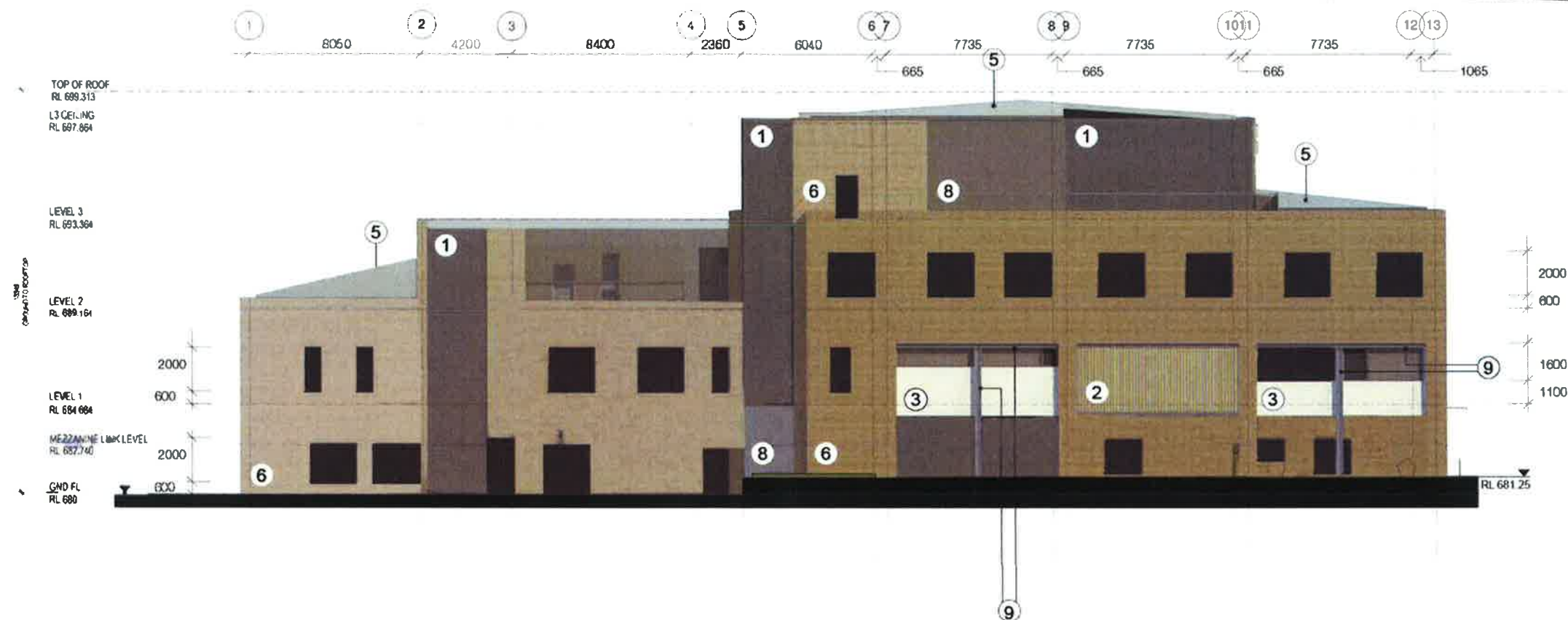
Issued under the Environmental Planning and Assessment Act 1979

Approved Application No. **SSD 8980**

granted on the **21 February 2019**

Signed 

Sheet No. **12** of **27**



1		Aluminium Louvres Powdercoat finish to match Colorbond Colour: Woodland Grey	4		FC Cladding Blue board cladding with polymer render finish with integral acrylic colour equal to Rockcote	7		Metal Cladding Type 2 Aluminium Fire Rated Material Colour: Equal to Alpolite M7817 Light Mid Bronze
2		Timber Look-alike Screen Innowood sections in 'Spotted Gum' colour, sanded finish	5		Roof & Gutters Lysaght Klip-Lok 700 profile roof deck 0.48 BMT Colorbond Colour: 'Woodland Grey'	8		Zinc Metal Cladding
3		Metal Cladding Type 1 Aluminium Fire Rated Material Colour: Equal to Colorbond 'Galactic' Metallic	6		Masonry Walls CSR/PGH Dry Pressed Extruded 'Copper Glow'	9		Steel Column & Lintels

AMENDMENTS

NO.	DATE	DESCRIPTION
1	2018	ISSUED FOR TENDERS
2	2018	ISSUED FOR TENDERS
3	2018	ISSUED FOR TENDERS
4	2018	ISSUED FOR TENDERS
5	2018	ISSUED FOR TENDERS
6	2018	ISSUED FOR TENDERS
7	2018	ISSUED FOR TENDERS
8	2018	ISSUED FOR TENDERS
9	2018	ISSUED FOR TENDERS
10	2018	ISSUED FOR TENDERS
11	2018	ISSUED FOR TENDERS
12	2018	ISSUED FOR TENDERS
13	2018	ISSUED FOR TENDERS
14	2018	ISSUED FOR TENDERS
15	2018	ISSUED FOR TENDERS
16	2018	ISSUED FOR TENDERS
17	2018	ISSUED FOR TENDERS
18	2018	ISSUED FOR TENDERS
19	2018	ISSUED FOR TENDERS
20	2018	ISSUED FOR TENDERS
21	2018	ISSUED FOR TENDERS
22	2018	ISSUED FOR TENDERS
23	2018	ISSUED FOR TENDERS
24	2018	ISSUED FOR TENDERS
25	2018	ISSUED FOR TENDERS
26	2018	ISSUED FOR TENDERS
27	2018	ISSUED FOR TENDERS
28	2018	ISSUED FOR TENDERS
29	2018	ISSUED FOR TENDERS
30	2018	ISSUED FOR TENDERS
31	2018	ISSUED FOR TENDERS
32	2018	ISSUED FOR TENDERS
33	2018	ISSUED FOR TENDERS
34	2018	ISSUED FOR TENDERS
35	2018	ISSUED FOR TENDERS
36	2018	ISSUED FOR TENDERS
37	2018	ISSUED FOR TENDERS
38	2018	ISSUED FOR TENDERS
39	2018	ISSUED FOR TENDERS
40	2018	ISSUED FOR TENDERS
41	2018	ISSUED FOR TENDERS
42	2018	ISSUED FOR TENDERS
43	2018	ISSUED FOR TENDERS
44	2018	ISSUED FOR TENDERS
45	2018	ISSUED FOR TENDERS
46	2018	ISSUED FOR TENDERS
47	2018	ISSUED FOR TENDERS
48	2018	ISSUED FOR TENDERS
49	2018	ISSUED FOR TENDERS
50	2018	ISSUED FOR TENDERS
51	2018	ISSUED FOR TENDERS
52	2018	ISSUED FOR TENDERS
53	2018	ISSUED FOR TENDERS
54	2018	ISSUED FOR TENDERS
55	2018	ISSUED FOR TENDERS
56	2018	ISSUED FOR TENDERS
57	2018	ISSUED FOR TENDERS
58	2018	ISSUED FOR TENDERS
59	2018	ISSUED FOR TENDERS
60	2018	ISSUED FOR TENDERS
61	2018	ISSUED FOR TENDERS
62	2018	ISSUED FOR TENDERS
63	2018	ISSUED FOR TENDERS
64	2018	ISSUED FOR TENDERS
65	2018	ISSUED FOR TENDERS
66	2018	ISSUED FOR TENDERS
67	2018	ISSUED FOR TENDERS
68	2018	ISSUED FOR TENDERS
69	2018	ISSUED FOR TENDERS
70	2018	ISSUED FOR TENDERS
71	2018	ISSUED FOR TENDERS
72	2018	ISSUED FOR TENDERS
73	2018	ISSUED FOR TENDERS
74	2018	ISSUED FOR TENDERS
75	2018	ISSUED FOR TENDERS
76	2018	ISSUED FOR TENDERS
77	2018	ISSUED FOR TENDERS
78	2018	ISSUED FOR TENDERS
79	2018	ISSUED FOR TENDERS
80	2018	ISSUED FOR TENDERS
81	2018	ISSUED FOR TENDERS
82	2018	ISSUED FOR TENDERS
83	2018	ISSUED FOR TENDERS
84	2018	ISSUED FOR TENDERS
85	2018	ISSUED FOR TENDERS
86	2018	ISSUED FOR TENDERS
87	2018	ISSUED FOR TENDERS
88	2018	ISSUED FOR TENDERS
89	2018	ISSUED FOR TENDERS
90	2018	ISSUED FOR TENDERS
91	2018	ISSUED FOR TENDERS
92	2018	ISSUED FOR TENDERS
93	2018	ISSUED FOR TENDERS
94	2018	ISSUED FOR TENDERS
95	2018	ISSUED FOR TENDERS
96	2018	ISSUED FOR TENDERS
97	2018	ISSUED FOR TENDERS
98	2018	ISSUED FOR TENDERS
99	2018	ISSUED FOR TENDERS
100	2018	ISSUED FOR TENDERS

ARCHITECT



CLIENT



PROJECT MANAGER



PROJECT

BOWRAL & DISTRICT HOSPITAL REDEVELOPMENT
97-103 BOWRAL ST.,
BOWRAL NSW 2576

DRAWING NUMBER
130443-MSJ-AR-DWG-MW20002

DRAWING NAME
SOUTH ELEVATION - DD

REV

15

ISSUE DATE

14/08/18

0m 2m 4m 6m 8m 10m
SCALE 1:250 @ A3



Planning &
Environment

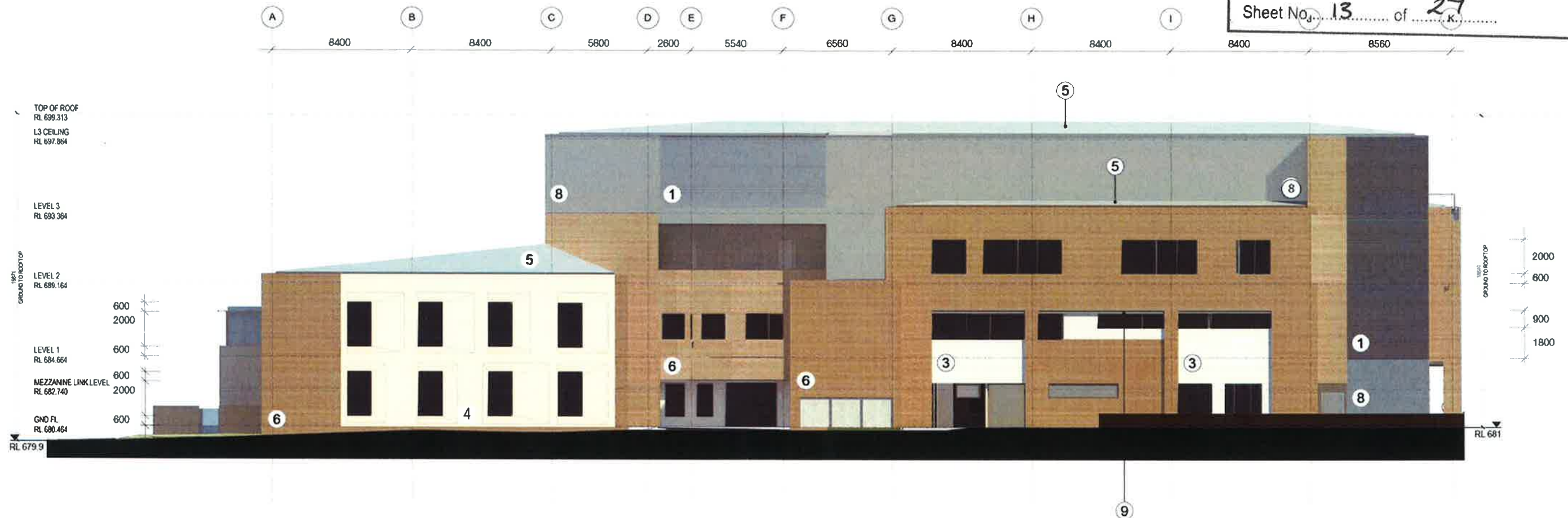
Issued under the Environmental Planning and Assessment Act 1979

Approved Application No. SSD 8980

granted on the 21 February 2019

Signed [Signature]

Sheet No. 13 of 27



1		Aluminium Louvres Powdercoat finish to match Colorbond Colour: Woodland Grey	4		FC Cladding Blue board cladding with polymer render finish with integral acrylic colour equal to Rockcote	7		Metal Cladding Type 2 Aluminium Fire Rated Material. Colour: Equal to Alpolic M7817 Light Mid Bronze
2		Timber Look-alike Screen Innowood sections in 'Spotted Gum' colour, sanded finish	5		Roof & Gutters Lysaght Klip-Lok 700 profile roof deck 0.48 BMT. Colorbond Colour: 'Woodland Grey'	8		Zinc Metal Cladding
3		Metal Cladding Type 1 Aluminium Fire Rated Material. Colour: Equal to Colorbond 'Galactic' Metallic	6		Masonry Walls CSR/PGH Dry Pressed Extruded 'Copper Glow'	9		Steel Column & Lintels

AMENDMENTS

NO.	DATE	DESCRIPTION
1	14/08/18	ISSUED FOR TENDERS
2	14/08/18	ISSUED FOR TENDERS
3	14/08/18	ISSUED FOR TENDERS
4	14/08/18	ISSUED FOR TENDERS
5	14/08/18	ISSUED FOR TENDERS
6	14/08/18	ISSUED FOR TENDERS
7	14/08/18	ISSUED FOR TENDERS
8	14/08/18	ISSUED FOR TENDERS
9	14/08/18	ISSUED FOR TENDERS
10	14/08/18	ISSUED FOR TENDERS
11	14/08/18	ISSUED FOR TENDERS
12	14/08/18	ISSUED FOR TENDERS
13	14/08/18	ISSUED FOR TENDERS
14	14/08/18	ISSUED FOR TENDERS
15	14/08/18	ISSUED FOR TENDERS
16	14/08/18	ISSUED FOR TENDERS
17	14/08/18	ISSUED FOR TENDERS
18	14/08/18	ISSUED FOR TENDERS
19	14/08/18	ISSUED FOR TENDERS
20	14/08/18	ISSUED FOR TENDERS
21	14/08/18	ISSUED FOR TENDERS
22	14/08/18	ISSUED FOR TENDERS
23	14/08/18	ISSUED FOR TENDERS
24	14/08/18	ISSUED FOR TENDERS
25	14/08/18	ISSUED FOR TENDERS
26	14/08/18	ISSUED FOR TENDERS
27	14/08/18	ISSUED FOR TENDERS
28	14/08/18	ISSUED FOR TENDERS
29	14/08/18	ISSUED FOR TENDERS
30	14/08/18	ISSUED FOR TENDERS
31	14/08/18	ISSUED FOR TENDERS
32	14/08/18	ISSUED FOR TENDERS
33	14/08/18	ISSUED FOR TENDERS
34	14/08/18	ISSUED FOR TENDERS
35	14/08/18	ISSUED FOR TENDERS
36	14/08/18	ISSUED FOR TENDERS
37	14/08/18	ISSUED FOR TENDERS
38	14/08/18	ISSUED FOR TENDERS
39	14/08/18	ISSUED FOR TENDERS
40	14/08/18	ISSUED FOR TENDERS
41	14/08/18	ISSUED FOR TENDERS
42	14/08/18	ISSUED FOR TENDERS
43	14/08/18	ISSUED FOR TENDERS
44	14/08/18	ISSUED FOR TENDERS
45	14/08/18	ISSUED FOR TENDERS
46	14/08/18	ISSUED FOR TENDERS
47	14/08/18	ISSUED FOR TENDERS
48	14/08/18	ISSUED FOR TENDERS
49	14/08/18	ISSUED FOR TENDERS
50	14/08/18	ISSUED FOR TENDERS
51	14/08/18	ISSUED FOR TENDERS
52	14/08/18	ISSUED FOR TENDERS
53	14/08/18	ISSUED FOR TENDERS
54	14/08/18	ISSUED FOR TENDERS
55	14/08/18	ISSUED FOR TENDERS
56	14/08/18	ISSUED FOR TENDERS
57	14/08/18	ISSUED FOR TENDERS
58	14/08/18	ISSUED FOR TENDERS
59	14/08/18	ISSUED FOR TENDERS
60	14/08/18	ISSUED FOR TENDERS
61	14/08/18	ISSUED FOR TENDERS
62	14/08/18	ISSUED FOR TENDERS
63	14/08/18	ISSUED FOR TENDERS
64	14/08/18	ISSUED FOR TENDERS
65	14/08/18	ISSUED FOR TENDERS
66	14/08/18	ISSUED FOR TENDERS
67	14/08/18	ISSUED FOR TENDERS
68	14/08/18	ISSUED FOR TENDERS
69	14/08/18	ISSUED FOR TENDERS
70	14/08/18	ISSUED FOR TENDERS
71	14/08/18	ISSUED FOR TENDERS
72	14/08/18	ISSUED FOR TENDERS
73	14/08/18	ISSUED FOR TENDERS
74	14/08/18	ISSUED FOR TENDERS
75	14/08/18	ISSUED FOR TENDERS
76	14/08/18	ISSUED FOR TENDERS
77	14/08/18	ISSUED FOR TENDERS
78	14/08/18	ISSUED FOR TENDERS
79	14/08/18	ISSUED FOR TENDERS
80	14/08/18	ISSUED FOR TENDERS
81	14/08/18	ISSUED FOR TENDERS
82	14/08/18	ISSUED FOR TENDERS
83	14/08/18	ISSUED FOR TENDERS
84	14/08/18	ISSUED FOR TENDERS
85	14/08/18	ISSUED FOR TENDERS
86	14/08/18	ISSUED FOR TENDERS
87	14/08/18	ISSUED FOR TENDERS
88	14/08/18	ISSUED FOR TENDERS
89	14/08/18	ISSUED FOR TENDERS
90	14/08/18	ISSUED FOR TENDERS
91	14/08/18	ISSUED FOR TENDERS
92	14/08/18	ISSUED FOR TENDERS
93	14/08/18	ISSUED FOR TENDERS
94	14/08/18	ISSUED FOR TENDERS
95	14/08/18	ISSUED FOR TENDERS
96	14/08/18	ISSUED FOR TENDERS
97	14/08/18	ISSUED FOR TENDERS
98	14/08/18	ISSUED FOR TENDERS
99	14/08/18	ISSUED FOR TENDERS
100	14/08/18	ISSUED FOR TENDERS

ARCHITECT



CLIENT



PROJECT MANAGER



PROJECT

BOWRAL & DISTRICT HOSPITAL REDEVELOPMENT
97-103 BOWRAL ST.,
BOWRAL NSW 2576

DRAWING NUMBER
130443-MSJ-AR-DWG-MW20004

DRAWING NAME
WEST ELEVATION - DD

REV

15

0m 2m 4m 6m 8m 10m
SCALE 1:250 @ A3

ISSUE DATE

14/08/18



Bowral & District Hospital Redevelopment

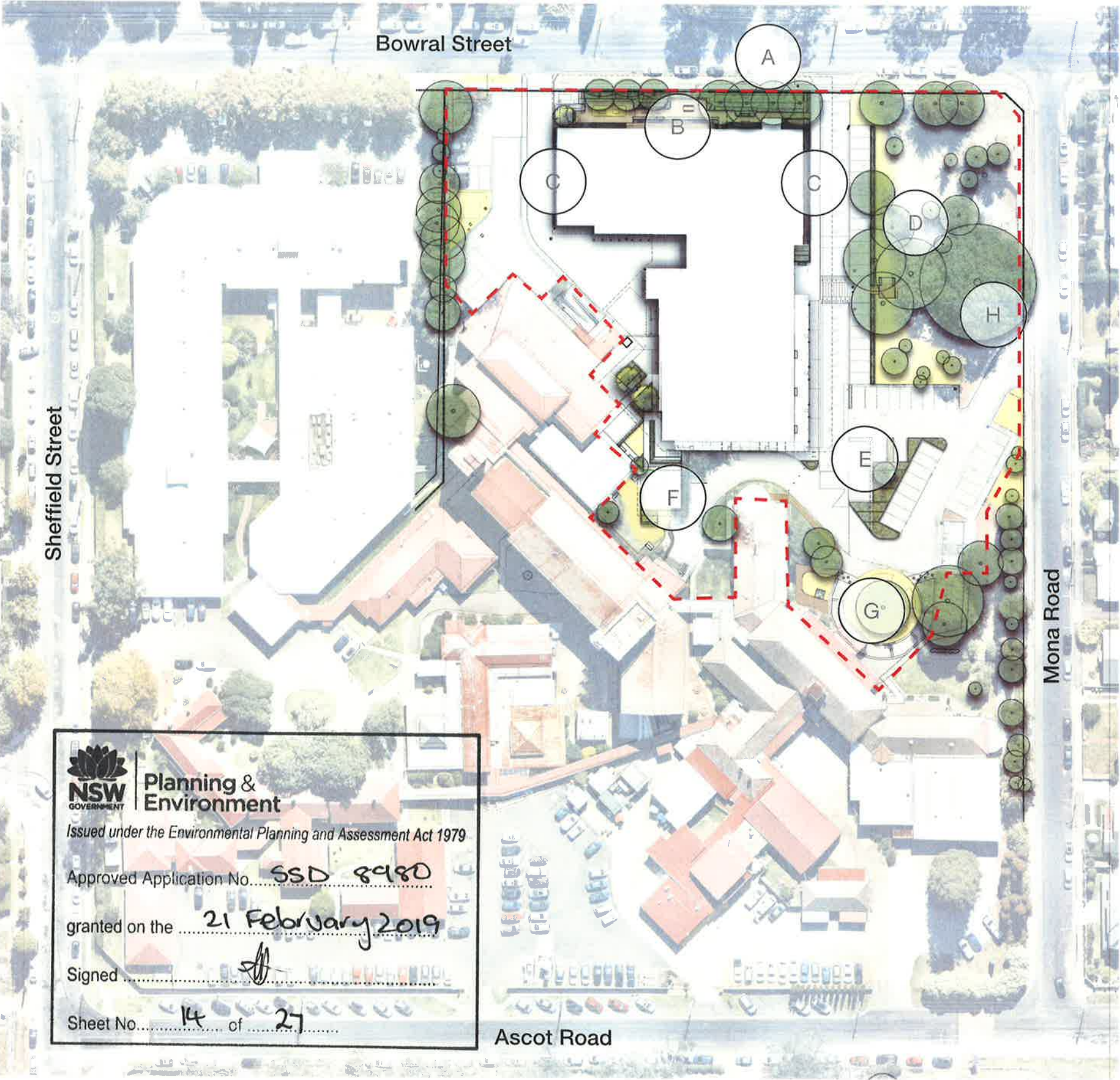
Landscape Design Development

20th November 2018



SITE IMAGE

Landscape Areas



- A Bowral Street Frontage**
Hedge and understory planting to existing trees
- B Northern Courtyard**
Courtyard for geriatric and dementia unit
- C Peripheral Planting**
Planting to building edge to soften built form and enable privacy to adjacent rooms from pathway
- D Existing Trees to be protected and retained**
Existing trees to be retained make good turf.
- E Carpark Planting**
Low planting to carpark to maintain sightlines
- F Staff Courtyard and South West Services**
Staff courtyard and landscaping to new and existing storage & utilities
- G Administration Building**
Improvements to paving and planting at building entry
- H Aboriginal Healing Space**
To be established with community



SITE IMAGE



Existing Trees



Bowral Street Frontage

T108 & 110 to be removed for substation and fire booster.


T109 Removed for early works crossover

— Bowral Street Frontage

T99 & 100 to be removed for driveway

Driveway

T77, T80 & T86 retention substation
detail driveway design and arborist
assessment


 **NSW**
GOVERNMENT

**Planning &
Environment**

Issued under the *Environmental Planning and Assessment Act 1979*

Approved Application No. SSD 8980

granted on the 21 February 2019

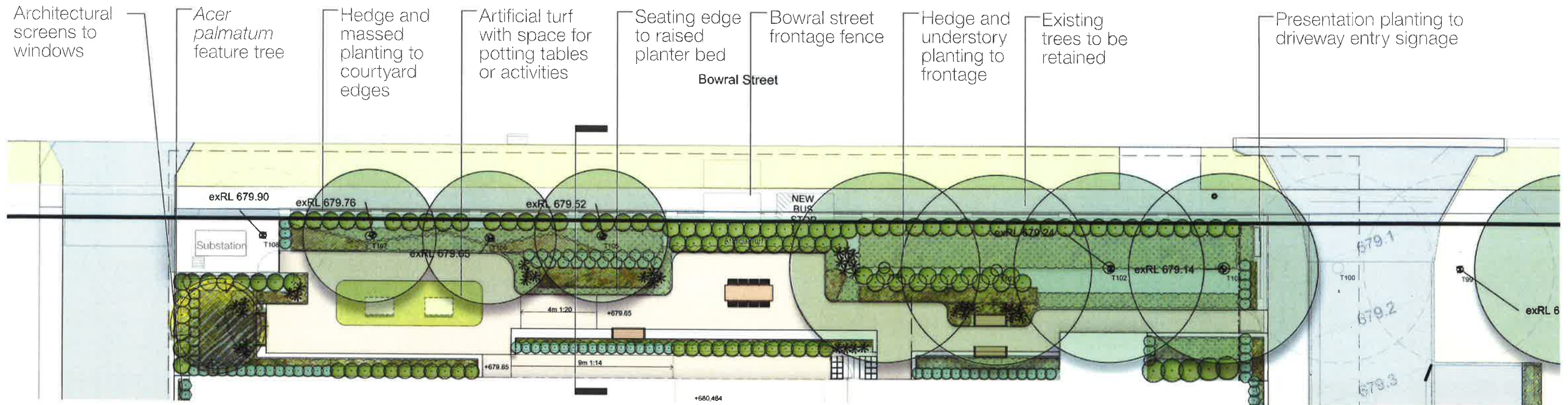
Signed 

Sheet No. 15 of 27

- Existing tree to be retained
- Existing tree removed as part of the separately approved works under Part 5 of the EP&A Act
- Existing trees to be removed as part of the separately approved works under Part 5 of the EP&A Act
- Tree to be removed under SSD

For additional tree Information refer Naturally Trees Arbocultural
Impact Appraisal and Method Statement April 2018

Northern Courtyard & Bowral St Frontage



Seating in courtyard



Sensory Planting



Periphery hedges and carpark planting

Existing Pin Oak to be retained

Ramp to building

Seating edge to planter

Proposed security fence

NSW GOVERNMENT Planning & Environment

Issued under the Environmental Planning and Assessment Act 1979

Approved Application No. **SSD 8980**

Bowral Street on the **21 February 2019**

Signed 

Sheet No. **16** of **27**

Drawing Number 004
Issue E
Date 20.11.2018



SITE IMAGE

Bowral & District Hospital | Landscape Design Development

Main Entry and Carpark

Seating and planter bed to main entry



Existing Liquidambar to be retained

Seating terrace

Driveway & Pedestrian crossing

Carparking




Seating to entry



Existing Liquidambar trees to be retained



Seating deck under existing trees



Planning & Environment
Issued under the Environmental Planning and Assessment Act 1979

Approved Application No. SSD 8980
granted on the 21 February 2019
Signed [Signature]
Sheet No. 17 of 27

T73

T76

680.4
680.5

T81

T80

T79

T87

T77

Seating and raised planter bed to entry

Wombat crossing to parking and turf area

Massed planting to carpark edge

Seating node deck area



SITE IMAGE

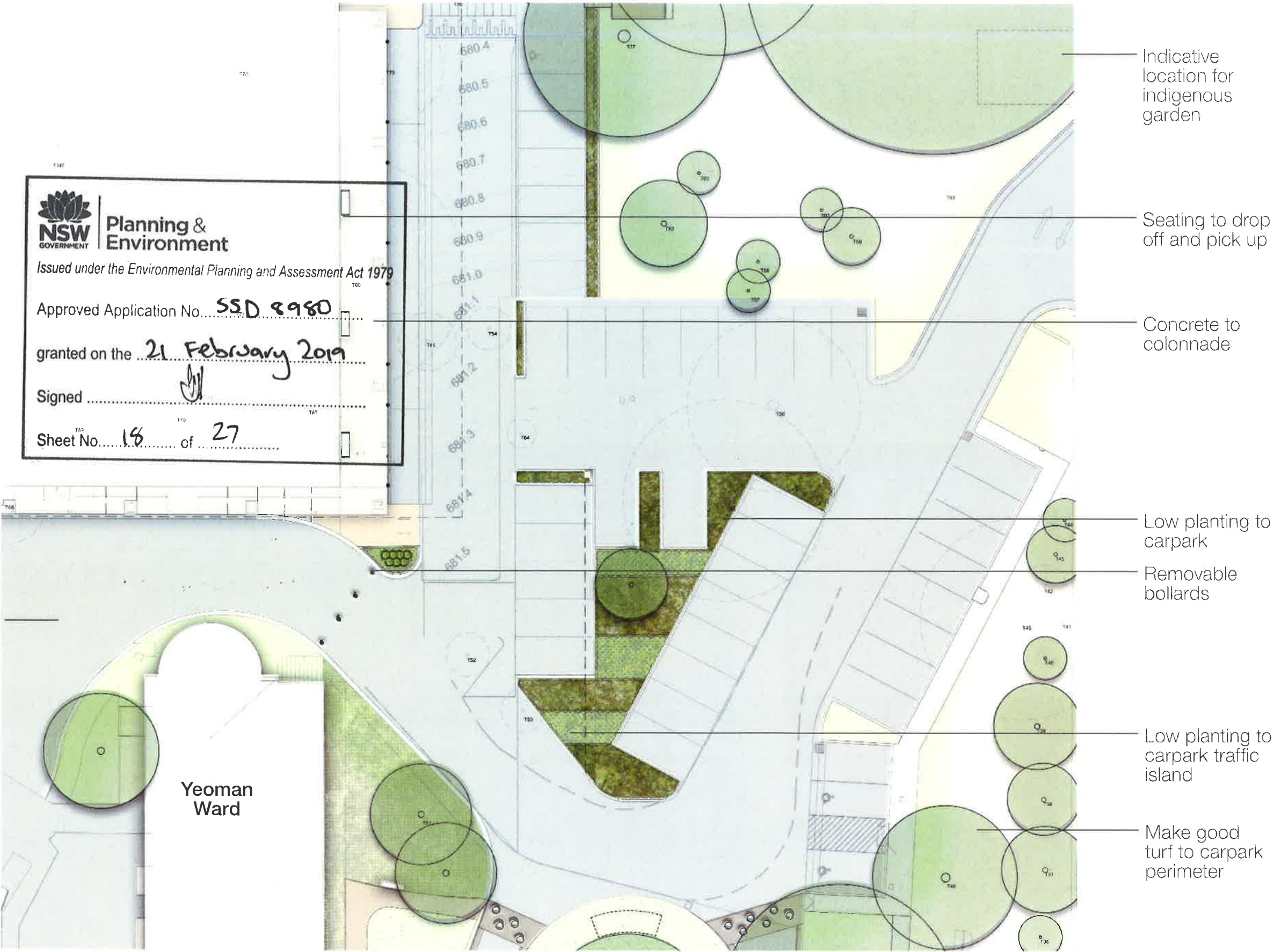
Bowral & District Hospital | Landscape Design Development



Drawing Number
Issue
Date

005
E
20.11.2018

Main Entry and Carpark



Feature paving to main entry



Low carpark planting




Pick up and drop off seating

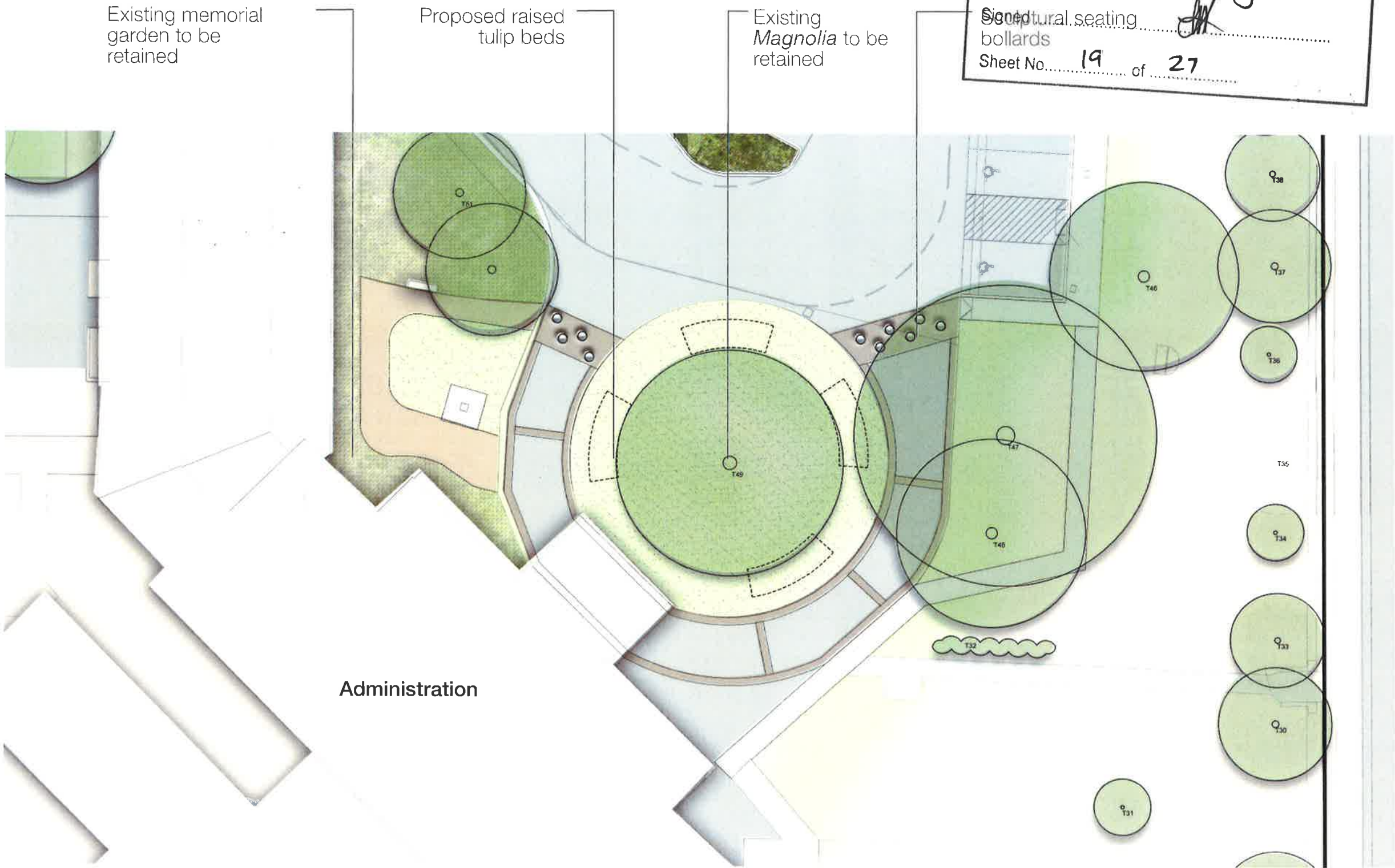


Screening planting to services

Administration Building Entry



Planning & Environment
Issued under the Environmental Planning and Assessment Act 1979
Approved Application No.....SS.D 8980
granted on the 21 February 2019
Signed *[Signature]*
Structural seating bollards
Sheet No. 19 of 27



Resurfaced asphalt with banding



Raised Beds of tulips



Sculptural bollard seats



Building entry planter beds refurbished



SITE IMAGE



Staff Courtyard



Connection pathway to admin





Turf garden area



Paved staff area with seating



Screening planting to services

	Planning & Environment
Issued under the Environmental Planning and Assessment Act 1979	
Milton Park Ward existing garden to be retained	
Approved Application No.	SSD 8980
granted on the	21 February 2019
Signed	
Sheet No.	20 of 27



SITE IMAGE

Bowral & District Hospital | Landscape Design Development



Drawing Number 008
Issue E
Date 20.11.2018

Planting

Proposed planting shall be a mixture of native and exotic species chosen for their suitability to the local conditions. New garden beds are to be irrigated to ensure successful establishment and the ongoing health of planting.

Northern Courtyard

Northern planting species will be selected to provide sensory and visual interest for dementia patients of the spaces. Due to the shade by existing trees along the northern boundary species will be shade tolerant and all species are to be non toxic.



Acer palmatum



Acanthus mollis



Westringa 'Wingecarribee Gem'



Convolvulus mauritanicus



Ajuga reptans



English lavender



Rosemarinus officinalis



Salvia officinalis

Site Periphery

Species to the building periphery will have a particular focus on being low maintenance and reliable complementing existing planting on the site.



Pyrus ussuriensis



Tristaniopsis laurina



Photinia Red Robin



Teucrium fruticans



Loropetalum Purple Pixie



Dianella caerulea



Liriope Evergreen Giant




Juniperus horizontalis 'Douglasii'

Indicative Plant Schedule

Detailed plating design to be undertaken in design development phase, indicative species proposed and sizes at supply as below.

Botanic Name	Common Name	Mature Size (H x W)	Pot Size	Spacing
Trees				
Acer palmatum	Japanese Maple	4 x 4	200L	As Shown
Tristaniopsis laurina	Water Gum	7 x 6	200L	As Shown
Pyrus ussuriensis	Manchurian Pear	9 x 7	200L	As Shown
Shrubs				
Acmena smithii minor	Lily Pilly	2 x 2	300mm	As Shown
Acanthus mollis	Oyster Plant	1 x 1	300mm	As Shown
Anigozanthos Big Red	Kangaroo Paw	1 x 1	300mm	As Shown
Callistemon 'Endeavour'		2 x 3	300mm	As Shown
Callistemon 'Little John'		.5 x .5	200mm	As Shown
Lavendula dentata	Lavender	1 x 1	300mm	As Shown
Melaleuca linariifolia 'Claret Tops'	Honey Myrtle	1 x 1	300mm	As Shown
Raphiolepis 'Oriental Pearl'		1 x 1	300mm	As Shown
Photinia Red Robin	Red Robin	2 x 2	300mm	As Shown
Syzygium 'Tiny Trev'		1 x 1	300mm	As Shown
Teucrium fruticans	Germander	.75 x 1	300mm	As Shown
Westringa 'Wingecarribee Gem'	Costal Rosmary	1.5 x 1.5	300mm	As Shown
Viburnum tinus	Japanese snowball	3 x 2	300mm	As Shown
Grasses and Groundcovers				
Ajuga reptans	Bugle Weed	.3 x 1	150mm	5/m2
Banksia 'Birthday Candles'		.3 x 1	200mm	5/m2
Convolvulus mauritanicus	Morning Glory	.15 x 1	150mm	5/m2
Grevillea 'Bronze Rambler'		.2 x 1	150mm	5/m2
Juniperus horizontalis 'Douglasii'	Prostrate Juniper	0.2 x 0.5	150mm	5/m2
Leptospermum hybrid 'Pink Cascade'		.3 x 1	150mm	3/m2
Lomandra 'Tanika'		.4 x .4	150mm	5/m2
Tulbaghia violacea	Society Garlic	.4 x .4	150mm	5/m2
Hardenbergia violacea	False Sasparilla	.5 x 2	150mm	5/m2
Liriope Evergreen Giant		.4 x .4	150mm	5/m2
Lomandra sp.	Mat Rush	1 x 1	150mm	5/m2
Myoporum parvifolium	Creeping Boobialla	.15 x 1	150mm	5/m2
Sensory				
Aloysia citrodora	Lemon Verbena	.3 x .3	150mm	5/m2
Rosemarinus officinalis	Rosemary	0.5 x 0.5	150mm	5/m2
Stachys byzantina	Lambs Ear	.4 x .4	150mm	5/m2
Thymus vulgaris	Common Thyme	0.3 x 0.3	150mm	5/m2



Planning & Environment

Issued under the Environmental Planning and Assessment Act 1979

Approved Application No. **SSD 8980**

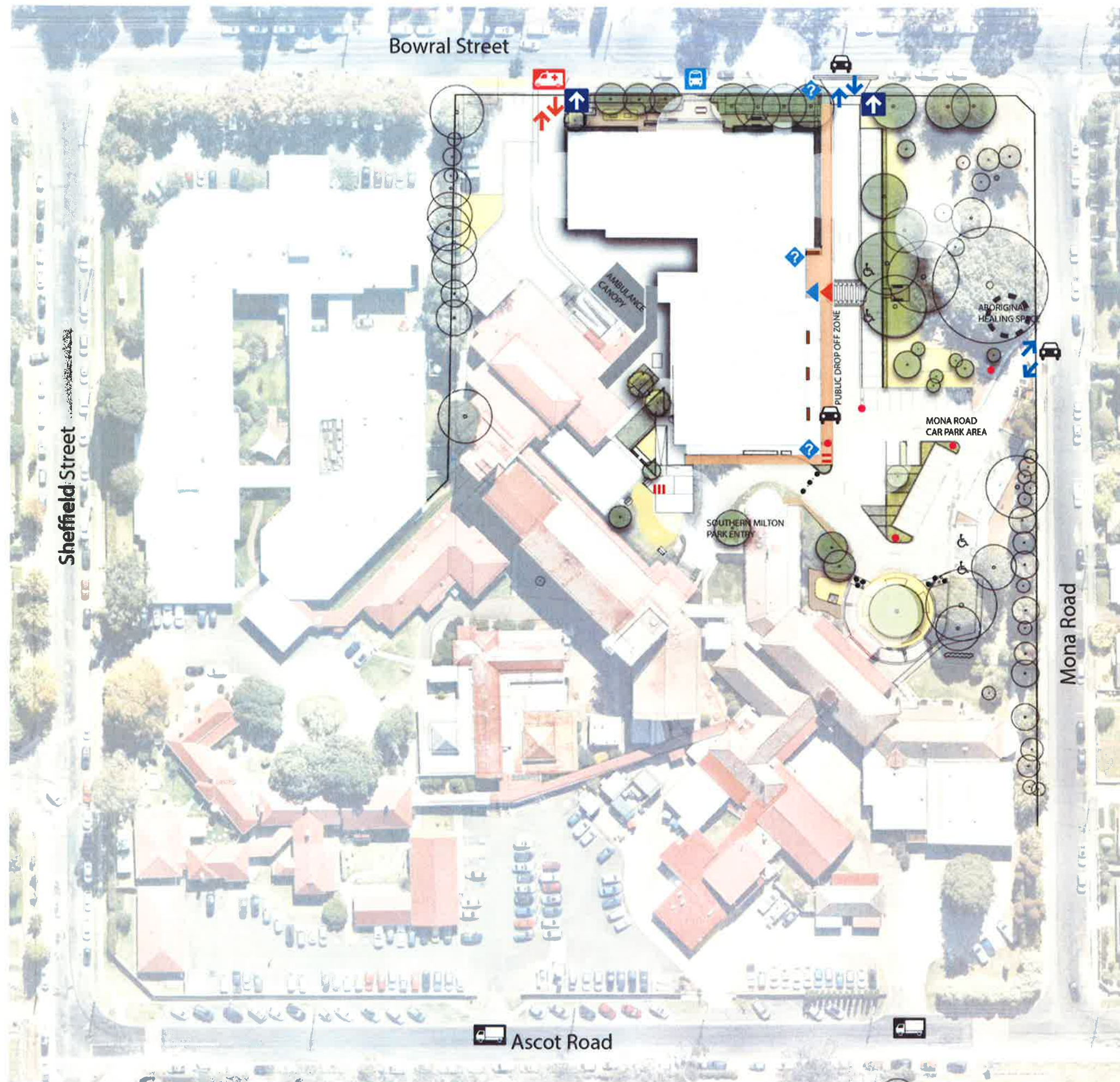
granted on the **121 February 2019**

Signed _____ Mature Size _____ Pot Size _____ Spacing _____

Sheet No. **21** of **27**



SITE IMAGE



KEY

- Main Directional Sign
- Campus Directory Sign
- Secondary Directional Sign
- Bus Stop
- Public Access
- Ambulance Access
- Main Public Entry
- ED Entry
- Service Access
- Accessible Parking
- Bicycle Parking
- Staff Bicycle Parking
- Aboriginal Healing Space
- Bollards
- Wombat Crossing
- Seating

Planning & Environment

Issued under the Environmental Planning and Assessment Act 1979

Approved Application No.....SSD 8980.....

granted on the ...21 February 2019.....

Signed

Sheet No...22... of 27

AMENDMENTS

ARCHITECT

CLIENT

PROJECT MANAGER

PROJECT

BOWRAL & DISTRICT HOSPITAL REDEVELOPMENT

97-103 BOWRAL ST.,
BOWRAL NSW 2576

DRAWING NUMBER

130443-MSJ-AR-DWG-DD CONCEPT

DRAWING NAME

SITE PLAN - DD CONCEPT

REV

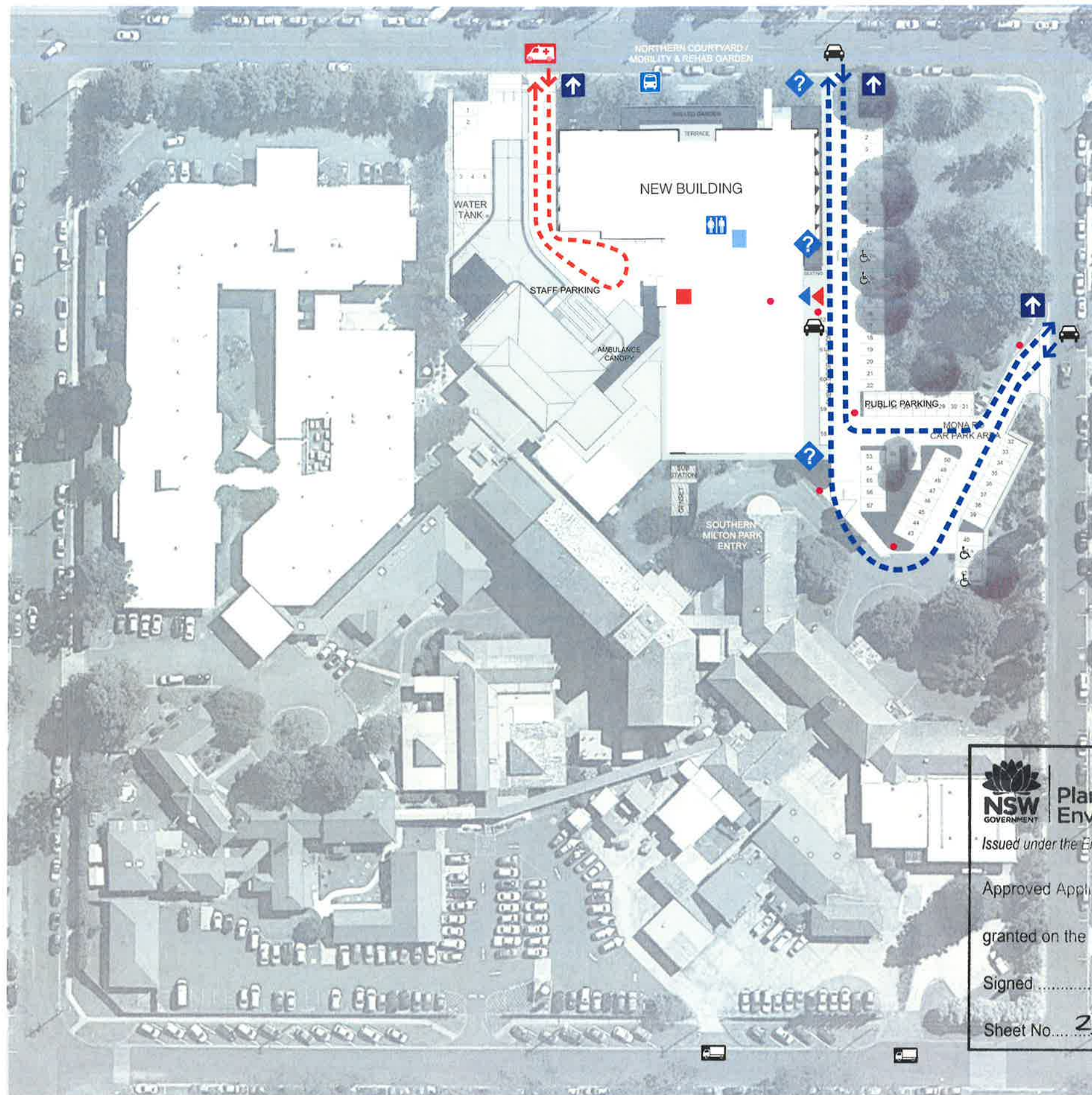


ISSUE DATE



1

22/10/18



- KEY**
- MAIN DIRECTIONAL SIGN
 - INFORMATION SIGN/CAMPUS DIRECTORY
 - SECONDARY DIRECTIONAL SIGN
 - BUS STOP
 - PUBLIC ACCESS
 - AMBULANCE ACCESS
 - MAIN PUBLIC ENTRY
 - ED ENTRY
 - SERVICE ACCESS
 - ACCESSIBLE PARKING



Planning & Environment

Issued under the Environmental Planning and Assessment Act 1979

Approved Application No. **SSD 8980**

granted on the **21 February 2019**

Signed

Sheet No. **23** of **27**

AMENDMENTS	DATE	BY
1. 15/10/18	15/10/18	15/10/18
2. 15/10/18	15/10/18	15/10/18
3. 15/10/18	15/10/18	15/10/18
4. 15/10/18	15/10/18	15/10/18
5. 15/10/18	15/10/18	15/10/18
6. 15/10/18	15/10/18	15/10/18
7. 15/10/18	15/10/18	15/10/18
8. 15/10/18	15/10/18	15/10/18
9. 15/10/18	15/10/18	15/10/18
10. 15/10/18	15/10/18	15/10/18

CLIENT
NSW Health Infrastructure

PROJECT MANAGER
15/10/18

MANAGING CONTRACTOR
15/10/18

ARCHITECT
15/10/18

EXTERNAL WAYFINDING PLAN

PROJECT
BOWRAL & DISTRICT HOSPITAL REDEVELOPMENT
97-103 BOWRAL ST, BOWRAL NSW 2576
DRAWING NUMBER
DRAWING NAME
SIGNAGE - EXTERNAL DIRECTIONAL SIGNS

REV
3

AS SHOWN

DATE
31/10/18



Planning &
Environment

Issued under the Environmental Planning and Assessment Act 1979

Approved Application No. SSD 8980

granted on the 21 February 2019

Signed [Signature]

Sheet No. 24 of 27



DOUBLE SIDED SIGNS

2 OFF SIGNS - 1 SINGLE SIDED



Main Directory Sign

A series of free standing pylon style signs will be used to identify main entry and exist points for both pedestrians and vehicles; these will include directions to key facilities such as Emergency.

Campus Directory Sign

A campus directory sign will be included at near the front entry to orientate and direct users to all parts of the hospital.

EXTERNAL SIGNAGE

AMENDMENTS	
NO.	DATE
1	2018/10/31




PROJECT	BOWRAL & DISTRICT HOSPITAL REDEVELOPMENT
	97-103 BOWRAL ST, BOWRAL NSW 2576
DRAWING NUMBER	
DRAWING NAME	SIGNAGE - MAIN DIRECTIONAL & CAMPUS DIRECTORY SIGN

REV	DATE
3	31/10/18
AS SHOWN	

TOP OF ROOF
FINISH
LEVEL
AL 100.000
FINISH
LEVEL
AL 100.000
FINISH
LEVEL
AL 100.000



**Planning & Environment**

Issued under the Environmental Planning and Assessment Act 1979

Approved Application No. SSD 8980

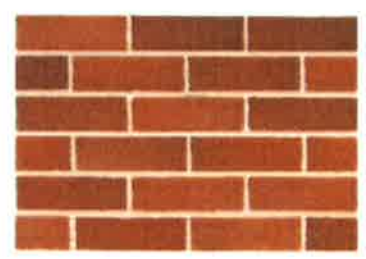
granted on the 21 February 2019

Sheet No. 26 of 27

EAST ELEVATION / MAIN BUILDING SIGN 1:500

BOWRAL & DISTRICT HOSPITAL

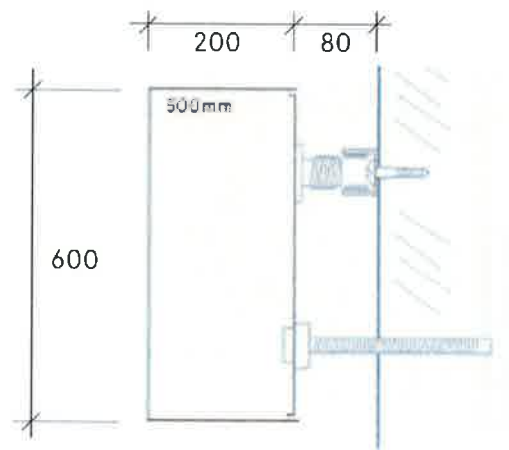
'Bowral & District Hospital' Sign in Typeface:
Apercu Regular, 600mm high



Brick Colour:
Bowral Bricks 'Bowral Brown'



Sign Colour:
Bronze Anodized



Typical Section not to scale



Main Building Sign in non-illuminated 3 dimensional formed letters in bronze anodised aluminium - letters will be 600mm high x200mm thick concealed pinned off building with 80mm gap



PART ELEVATION: BUILDING SIGN 1:100

AMENDMENTS		
NO.	DESCRIPTION	DATE

CLIENT
 **Health**
Infrastructure

PROJECT MANAGER


MANAGING CONTRACTOR


ARCHITECT


MAIN BUILDING SIGN

PROJECT
BOWRAL & DISTRICT HOSPITAL REDEVELOPMENT
97-103 BOWRAL ST. BOWRAL NSW 2576

DRAWING NUMBER

DRAWING NAME
SIGNAGE - MAIN BUILDING IDENTIFICATION SIGN

REV	AS SHOWN	DATE
4		22/01/19