

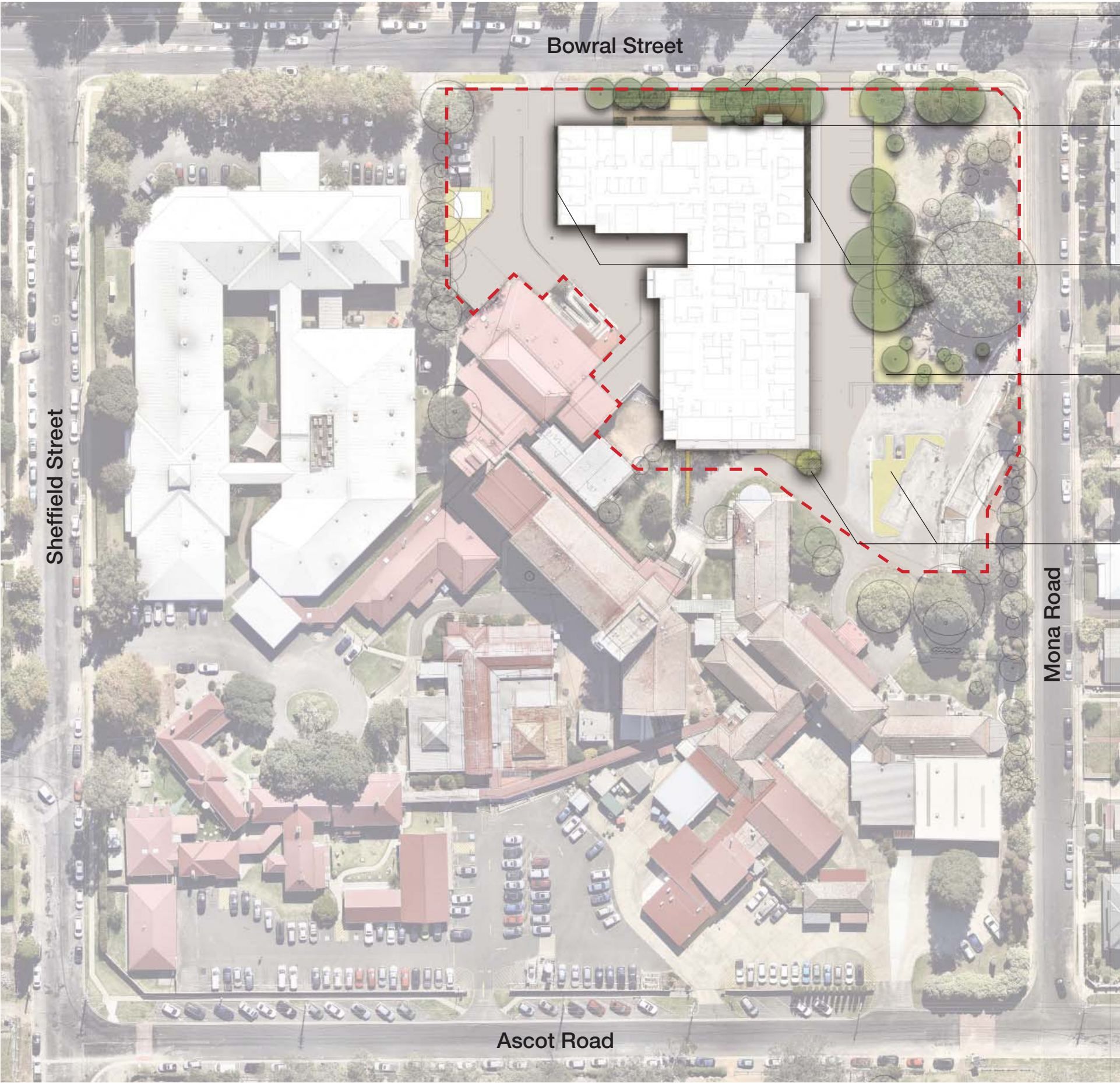


# Bowral & District Hospital Redevelopment Landscape EIS August 2018





Landscape Areas



**Bowral Street Frontage**

Hedge and understory planting to existing trees



**Northern Courtyard**

Courtyard for geriatric and dementia unit



**Peripheral Planting**

Planting to building edge to soften built form and enable privacy to adjacent rooms from pathway

**Existing Trees to be protected and retained**

Existing trees to be retained make good turf.



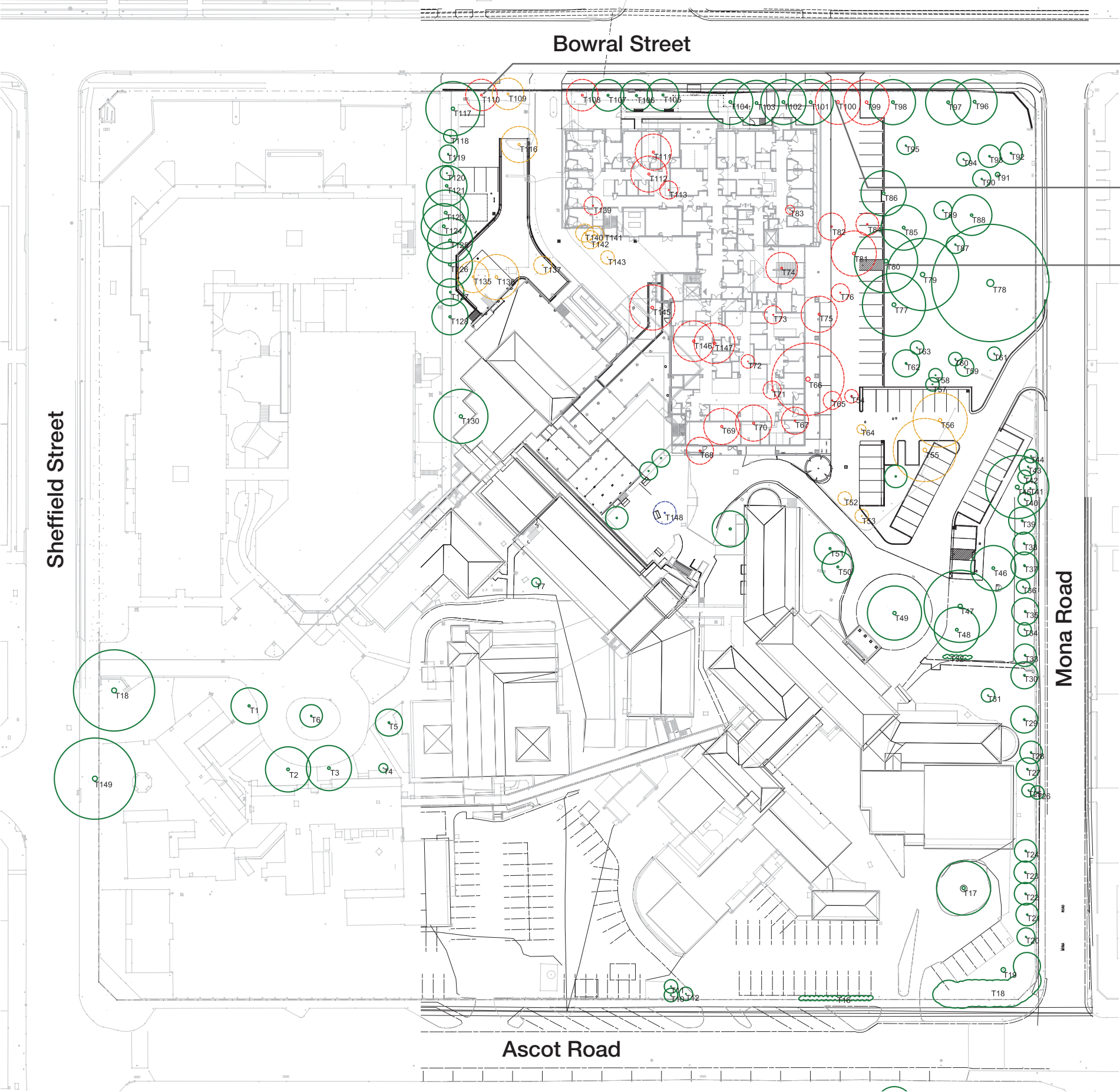
**Carpark Planting**

Low planting to carpark to maintain sightlines





Existing Trees

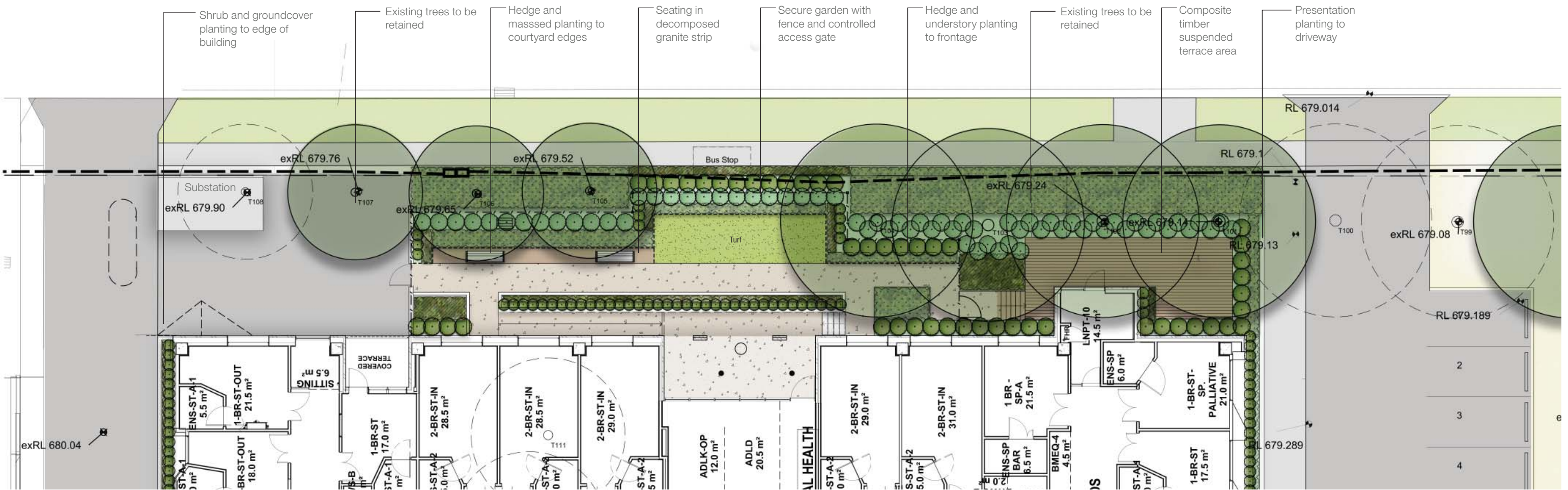


- Bowral Street Frontage**  
T108 & 110 to be removed for substation and fire booster.  
T109 Removed for early works crossover
- Bowral Street Frontage**  
T99 & 100 to be removed for driveway
- Driveway**  
T77, T80 & T86 retention subject to detail driveway design and arborist assessment

- Existing tree to be retained
- Existing tree removed as part of the separately approved works under Part 5 of the EP&A Act
- Existing trees to be removed as part of the separately approved works under Part 5 of the EP&A Act
- Tree to be removed under SSD

For additional tree Information refer Naturally Trees Arbocultural Impact Appraisal and Method Statement April 2018





Seating in courtyard



Turf area



Sensory Planting



Underplanting to existing trees



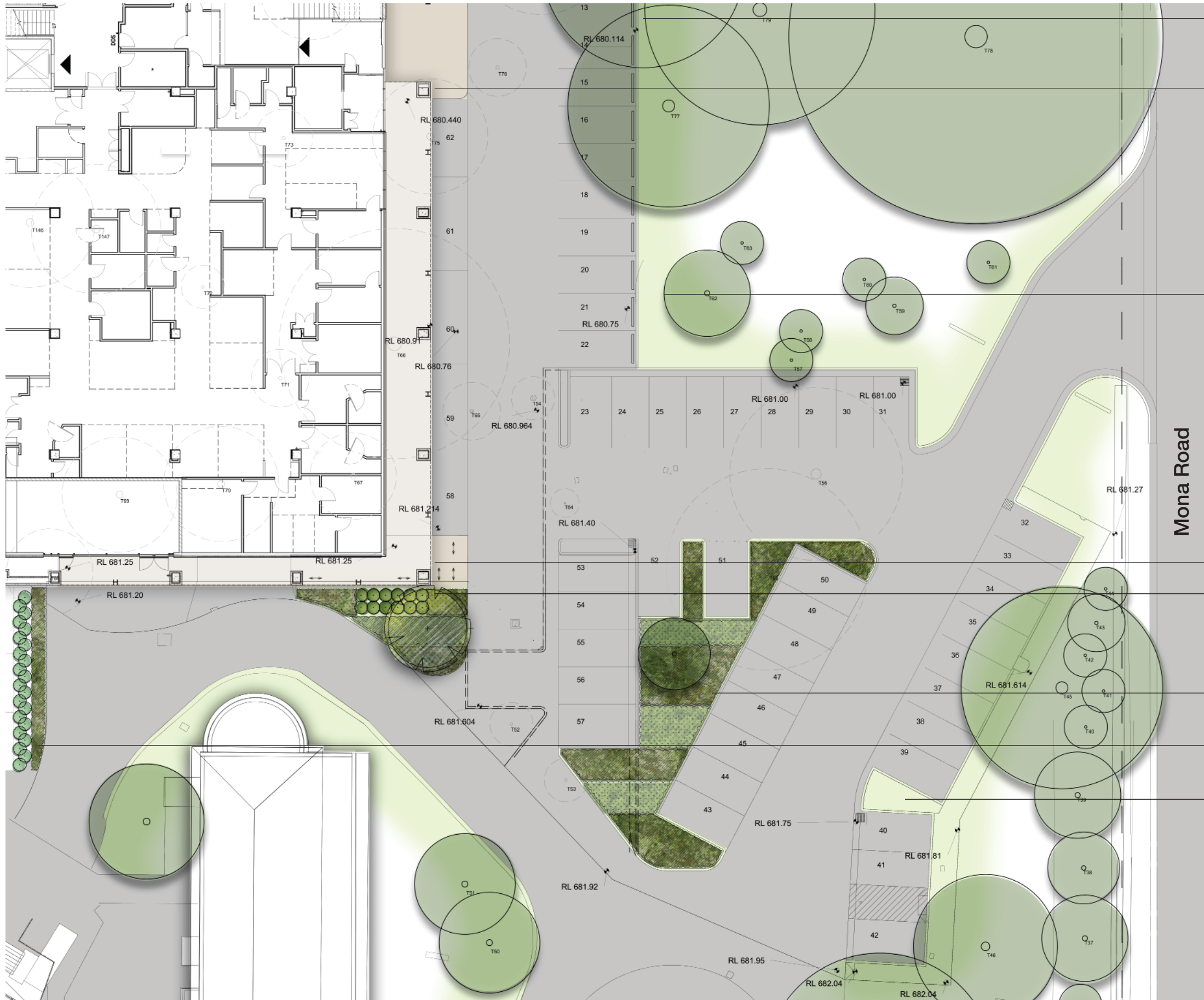
Suspended deck area



Periphery hedges and carpark planting



## Main Entry and Carpark



- Existing trees to be retained subject to driveway design and arborists report

- Feature paving or concrete used to main entry area



Feature paving to main entry

- Existing trees to be retained and turf made good as civil works necessitate



Low carpark planting

- Bike parking

— Low planting to carpark  
traffic island with tree  
with clear canopy  
indicative species  
*Pyrus sp*



Clear canopy tree

- Low planting to carpark traffic island

- Screening planting to services

- Make good turf to carpark perimeter



## Screening planting to services



SITE IMAGE  
Landscape Architects

Bowral &amp; District Hospital | Landscape EIS



Drawing Number  
Issue  
Date

005  
C  
10.08.2018



# Planting

Proposed planting shall be a mixture of native and exotic species chosen for their suitability to the local conditions. New garden beds are to be irrigated to ensure successful establishment and the ongoing health of planting.

## Northern Courtyard

Northern planting species will be selected to provide sensory and visual interest for dementia patients of the spaces. Due to the shade by existing trees along the northern boundary species will be shade tolerant and all species are to be non toxic.



Acer palmatum



Quercus palustrus



Westringa 'Wingecaribee Gem'



Convolvulus mauritanicus



Ajuga reptans



English lavender



Rosemarinus officinalis



Salvia officinalis

## Site Periphery

Species to the building periphery will have a particular focus on being low maintenance and reliable complementing existing planting on the site.



Pyrus ussuriensis



Melaleuca styphelioides



Photinia Red Robin



Teucrium fruticans



Loropetalum Purple Pixie



Dianella caerulea



Liriope Evergreen Giant



Juniperus horizontalis 'Douglasii'

## Indicative Plant Schedule

Detailed plating design to be undertaken in design development phase, indicative species proposed and sizes at supply as below.

Botanical Name	Common Name	Mature Size	Pot Size	Spacing
Trees				
Acer palmatum	Japanese Maple	4 x 4	200L	As Shown
Fraxinus excelsior 'Aurea'	Golden Ash	7 x 7	200L	As Shown
Lagerstroemia indica	Crepe Myrtle	8 x 4	200L	As Shown
Liquidambar styraciflua	Liquidamber	20 x 10	200L	As Shown
Pyrus ussuriensis	Manchurian Pear	9 x 7	200L	As Shown
Quercus palustrus	Pin Oak	15 x 8	200L	As Shown
Shrubs				
Camelia sp.	Camelia	2 x 2	300mm	As Shown
Lavendula dentata	Lavender	1 x 1	300mm	As Shown
Photinia Red Robin	Red Robin	2 x 2	300mm	As Shown
Teucrium fruticans	Germander	.75 x 1	300mm	As Shown
Westringa 'Wingecaribee Gem'	Costal Rosmary	1.5 x 1.5	300mm	As Shown
Viburnum tinus	Japanese snowball	3 x 2	300mm	As Shown
Grasses and Groundcovers				
Ajuga reptans	Bugle Weed	.3 x 1	150mm	5/m2
Convolvulus mauritanicus	Morning Glory	.15 x 1	150mm	5/m2
Dianella caerulea	Blue Flax Lily	.4 x .4	150mm	5/m2
Juniperus horizontalis 'Douglasii'	Prostrate Juniper	0.2 x 0.5	150mm	5/m2
Hardenbergia violacea	False Sasparilla	.5 x 2	150mm	5/m2
Liriope Evergreen Giant		.4 x .4	150mm	5/m2
Lomandra sp.	Mat Rush	1 x 1	150mm	5/m2
Myoporum parvifolium	Creeping Boobialla	.15 x 1	150mm	5/m2
Sensory				
Aloysia citrodora	Lemon Verbena	.3 x .3	150mm	5/m2
Rosemarinus officinalis	Rosemary	0.5 x 0.5	150mm	5/m2
Salvia elegans	Pineapple Sage	1.5 x 1.5	150mm	5/m2
Salvia officinalis	Common Sage	0.5 x 0.5	150mm	5/m2
Stachys byzantina	Lambs Ear	.4 x .4	150mm	5/m2
Thymus vulgaris	Common Thyme	0.3 x 0.3	150mm	5/m2
English lavender	Lavender	.6 x .6	150mm	5/m2