

- KEY**
- MAIN DIRECTIONAL SIGN
 - INFORMATION SIGN/CAMPUS DIRECTORY
 - SECONDARY DIRECTIONAL SIGN
 - BUS STOP
 - PUBLIC ACCESS
 - AMBULANCE ACCESS
 - MAIN PUBLIC ENTRY
 - ED ENTRY
 - SERVICE ACCESS
 - ACCESSIBLE PARKING

AMENDMENTS			
REV	DATE	FOR TENDER	SUBJECT
1	24/09/18	FOR TENDER	
2	18/10/18	FOR TENDER	
3	31/10/18	FOR TENDER	

CLIENT

NSW Health Infrastructure

PROJECT MANAGER

capitol insight

LEVEL 9, 76 BERRY ST
NORTH SYDNEY NSW 2060

MANAGING CONTRACTOR

ARCHITECT

MSJ

51/5, 36/32 PYRAMA RD
PYRMONT NSW 2009

EXTERNAL WAYFINDING PLAN

PROJECT

BOWRAL & DISTRICT HOSPITAL REDEVELOPMENT

97-103 BOWRAL ST, BOWRAL NSW 2576

DRAWING NUMBER

-

DRAWING NAME

SIGNAGE - EXTERNAL DIRECTIONAL SIGNS

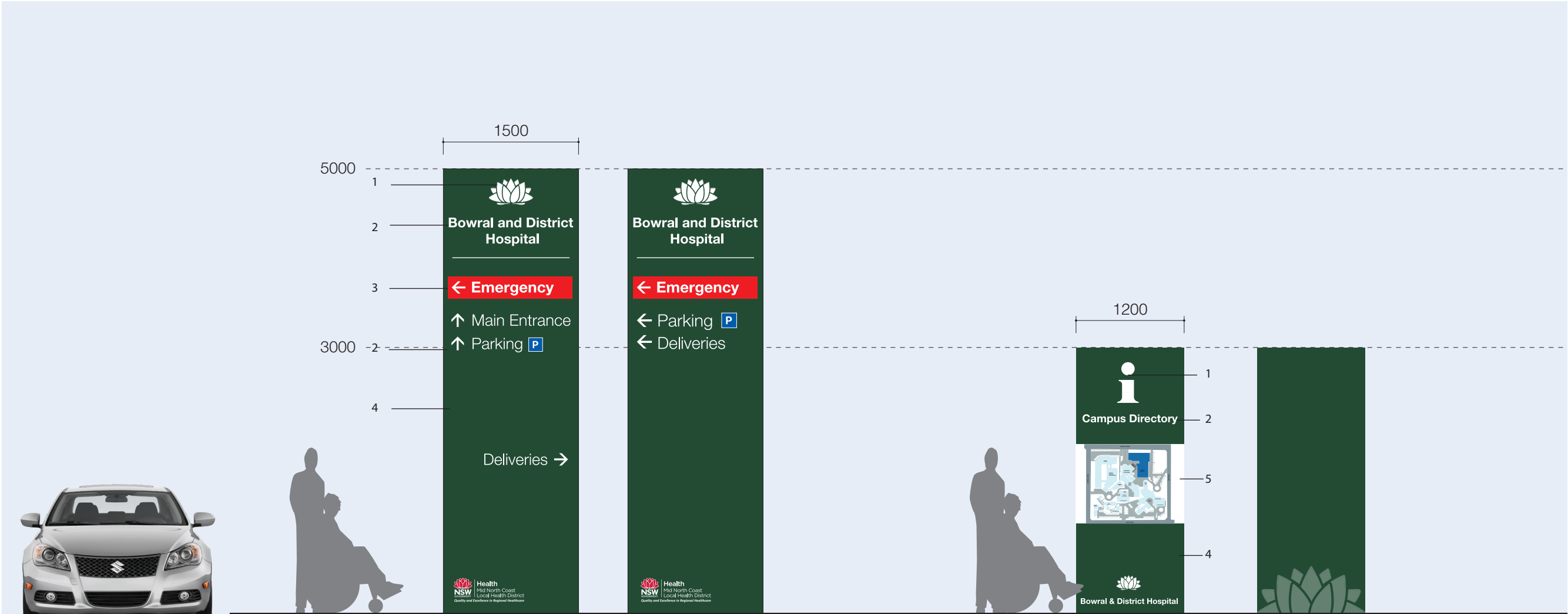
REV

3

AS SHOWN

DATE

31/10/18



M1A (side 1)
[Location] Face
5000H x 1500W
cap height: 160mm
Scale 1:50 @ A3

M1A (side 2)
[Location] Face
5000H x 1500W
cap height: 160mm
Scale 1:50 @ A3

- Typical Construction**
- 1. Waratah and 'i' in raised 10mm thick acrylic
 - 2. Text in applied vinyl graphics with protective coating over
 - 3. 'Emergency' in cut out letters back-lit
 - 4. Free standing sign blade structure wrapped in folded aluminium sheet butt jointed at sides. Polyester powder coated conceal. Fixed on concrete base.
 - 5. Braille and tactile campus map.

CD1
Campus Directory
[Location] Face
3000H x 1200W
cap height: mm
Scale 1:50 @ A3

CD2
Campus Directory
[Location] Face
3000H x 1200W
cap height: mm
Scale 1:50 @ A3

DOUBLE SIDED SIGNS

2 OFF SIGNS - 1 SINGLE SIDED



Main Directory Sign
A series of free standing pylon style signs will be used to identify main entry and exist points for both pedestrians and vehicles; these will include directions to key facilities such as Emergency.

Campus Directory Sign
A campus directory sign will be included at near the front entry to orientate and direct users to all parts of the hospital.

AMENDMENTS			
ISSUE	DATE	SUBJECT	AUTH
1	18/10/18	FOR TENDER	
2	31/10/18	FOR TENDER	
3			



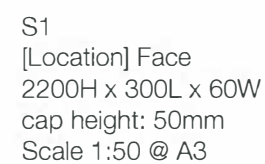
EXTERNAL SIGNAGE

PROJECT
BOWRAL & DISTRICT HOSPITAL REDEVELOPMENT
97-103 BOWRAL ST, BOWRAL NSW 2576
DRAWING NUMBER
-
DRAWING NAME
SIGNAGE - MAIN DIRECTIONAL & CAMPUS DIRECTORY SIGN

REV
3

AS SHOWN

DATE
31/10/18



The site will include a series of vehicle directional signs and parking totems to indicate special parking zones.

<p>AMENDMENTS</p>	<p>CLIENT</p>	<p>PROJECT MANAGER</p>	<p>MANAGING CONTRACTOR</p>	<p>ARCHITECT</p>	<h1 style="text-align: center;">EXTERNAL SIGNAGE</h1>	<p>PROJECT BOWRAL & DISTRICT HOSPITAL REDEVELOPMENT 97-103 BOWRAL ST, BOWRAL NSW 2576 DRAWING NUMBER -</p>	<p>REV 3</p>	<p>AS SHOWN</p>	<p>DATE 31/10/18</p>
						<p>DRAWING NAME SIGNAGE - SECONDARY DIRECTIONAL SIGNS</p>			



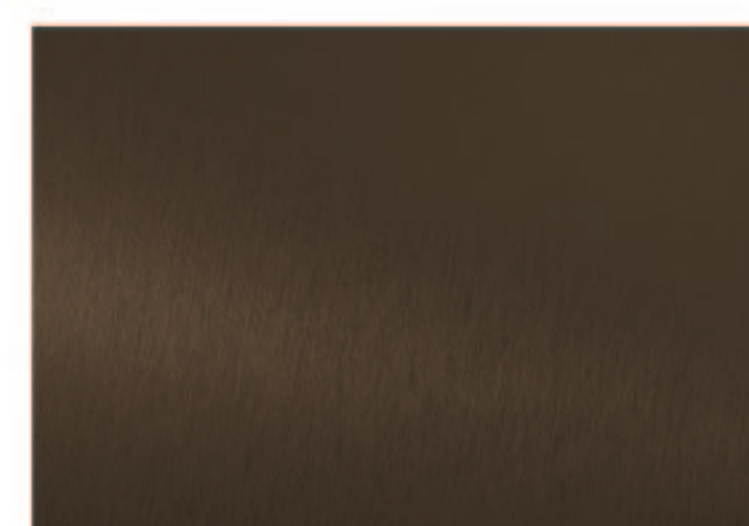
EAST ELEVATION / MAIN BUILDING SIGN 1:500

BOWRAL & DISTRICT HOSPITAL

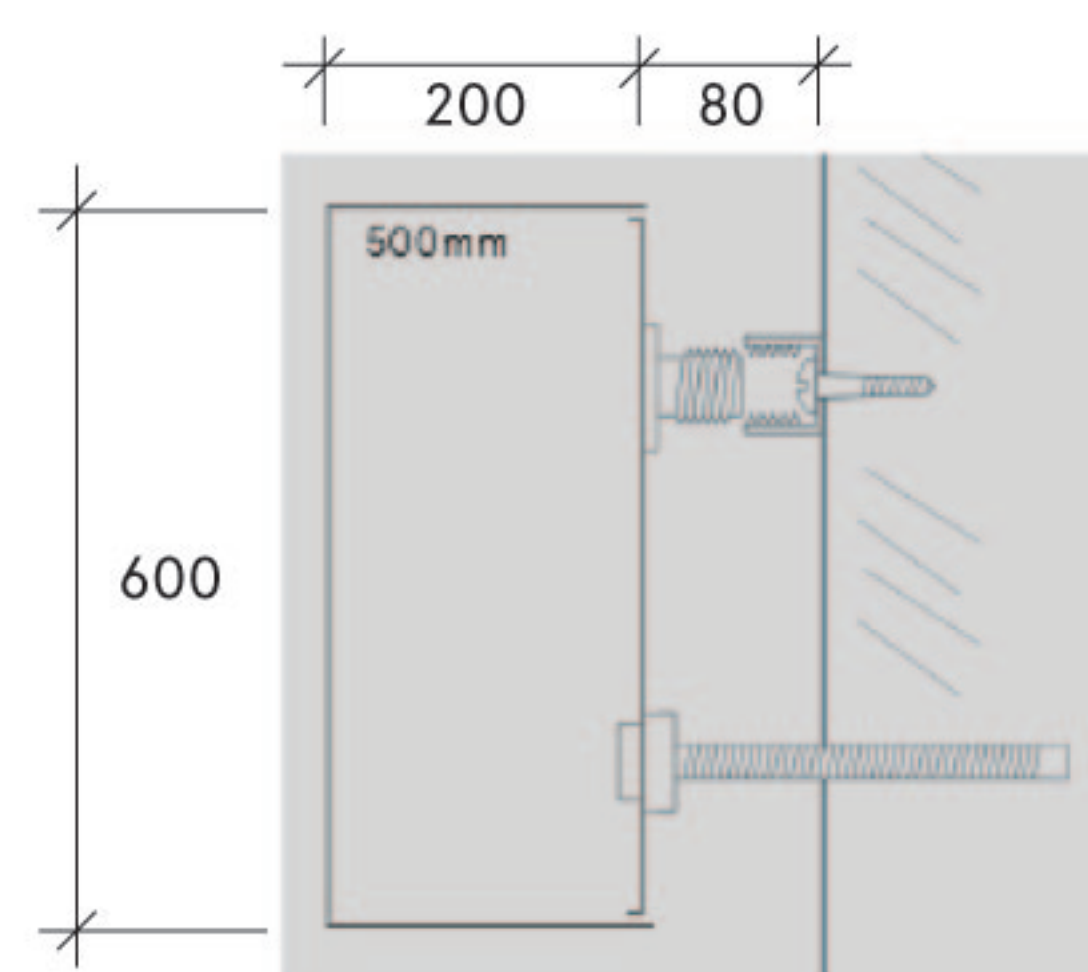
'Bowral & District Hospital' Sign in Typeface:
Apercu Regular, 600mm high



Brick Colour:
Bowral Bricks 'Bowral Brown'



Sign Colour:
Bronze Anodized



Typical Section not to scale



Main Building Sign in non-illuminated 3 dimensional formed letters in bronze anodised aluminium - letters will be 600mm high x200mm thick concealed pinned off building with 80mm gap



PART ELEVATION: BUILDING SIGN 1:100

AMENDMENTS	DATE	SUBJECT	AUTH
1	20/01/19	FOR TENDER	
2	19/01/19	FOR TENDER	
3	17/01/19	FOR TENDER	

CLIENT



PROJECT MANAGER



MANAGING CONTRACTOR

ARCHITECT



MAIN BUILDING SIGN

PROJECT

BOWRAL & DISTRICT HOSPITAL REDEVELOPMENT
97-103 BOWRAL ST, BOWRAL NSW 2576

DRAWING NUMBER

-

DRAWING NAME

SIGNAGE - MAIN BUILDING IDENTIFICATION SIGN

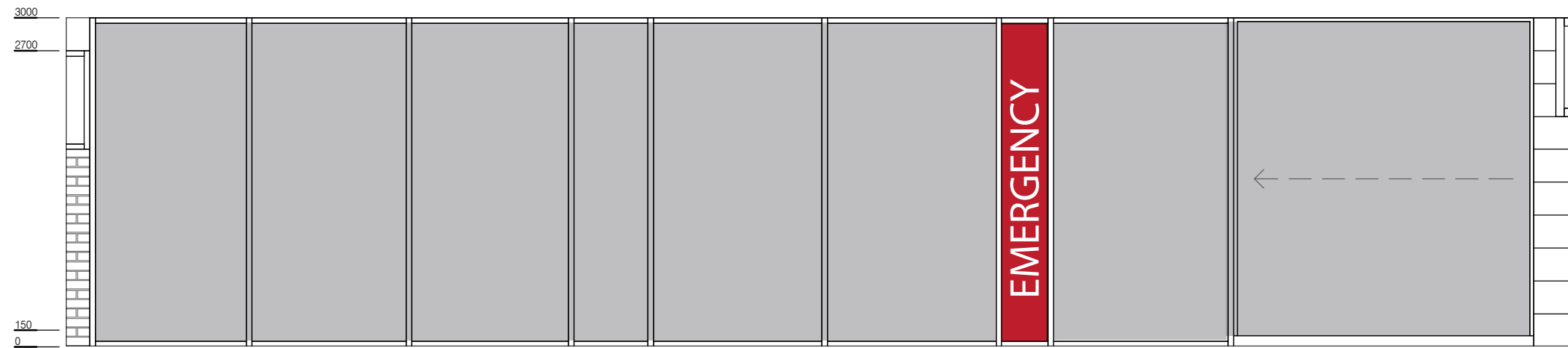
REV

4

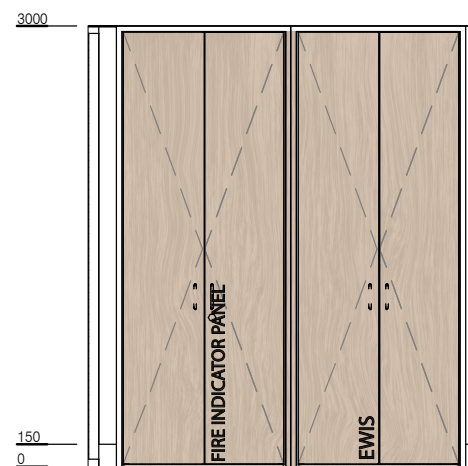
AS SHOWN

DATE

22/01/19



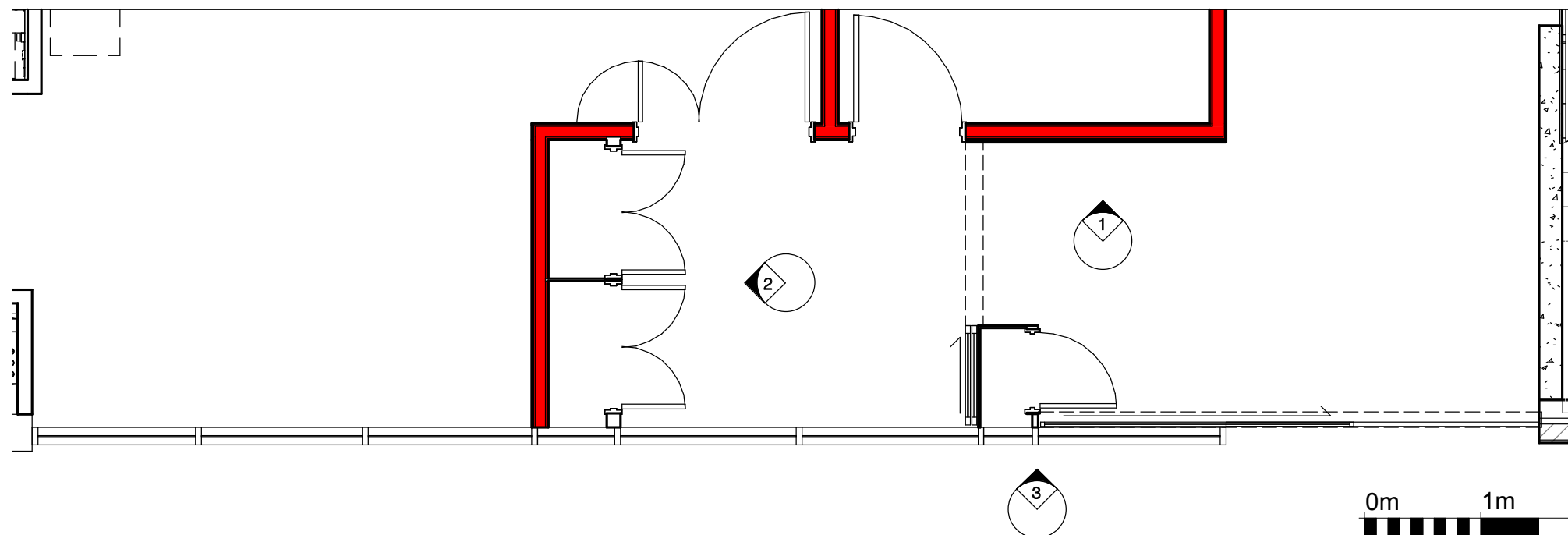
ELEVATION 3



ELEVATION 2



ELEVATION 1



PLAN



SCALE 1:50 @ A3

AMENDMENTS			
NO.	DATE	SUBJECT	AUTH.
1	24/09/18	FOR TENDER	
2	18/10/18	FOR TENDER	
3	31/10/18	FOR TENDER	



EMERGENCY SIGN

PROJECT
BOWRAL & DISTRICT HOSPITAL REDEVELOPMENT
97-103 BOWRAL ST, BOWRAL NSW 2576
DRAWING NUMBER
EMERGENCY SIGNS

REV
3

AS SHOWN

DATE
31/10/18