

1 View Impact Location 1 - Before
7 Rupertswood Avenue, Bellevue Hill NSW

2 View Impact Location 1 - After
7 Rupertswood Avenue, Bellevue Hill NSW

GENERAL NOTES

- Consult with ALL relevant authorities prior to commencing works
- **DO NOT** scale. All dimensions are nominal + should be confirmed on site prior to commencement
- Obtain setting out information from architect **PRIOR** to commencement
- Bring discrepancies to the immediate attention of the Architect
- If unsure of any aspect of the works seek instruction from the Architect before proceeding
- All drawings must be read in conjunction with the council consent, specification, schedules, site notes + instructions issued by the Architect
- This material / work is protected by Copyright

CONSULTANTS

TPQS

Quantity Surveyors

BBC

Planning Consultants

ACTV

Mechanical Engineer

Code Performance

Code Performance
Accessibility Consult

P9E

PBE
Structural Engineer

BFG

BEG
BCA Consultant

171

JLL
Hydraulic Engineer

Please Mail

Riley Mac
Fire Consultant

MCO

Fire Engineer

LINEA

Electrical Engineer

000

BEG
BCA Consultant

Decid. Monoc.

Beveridge Williams
Surveyors

CLIENT
STEVEN ADAMS
THE SCOTS COLLEGE

PROJECT
MAJOR ALTERATIONS + ADDITIONS TO
THE STEVENSON LIBRARY [SSD 8922]

ADDRESS

58 Victoria Road
Bellevue Hill, NSW

DRAWING TITLE
PROPOSED VISUAL IMPACT

DRAWN BY
JC, CF, JW, ZW

SCALE

NTS

ISSUE

REVISION \$1

DATE JUNE 2018

DRAFTING NUMBER



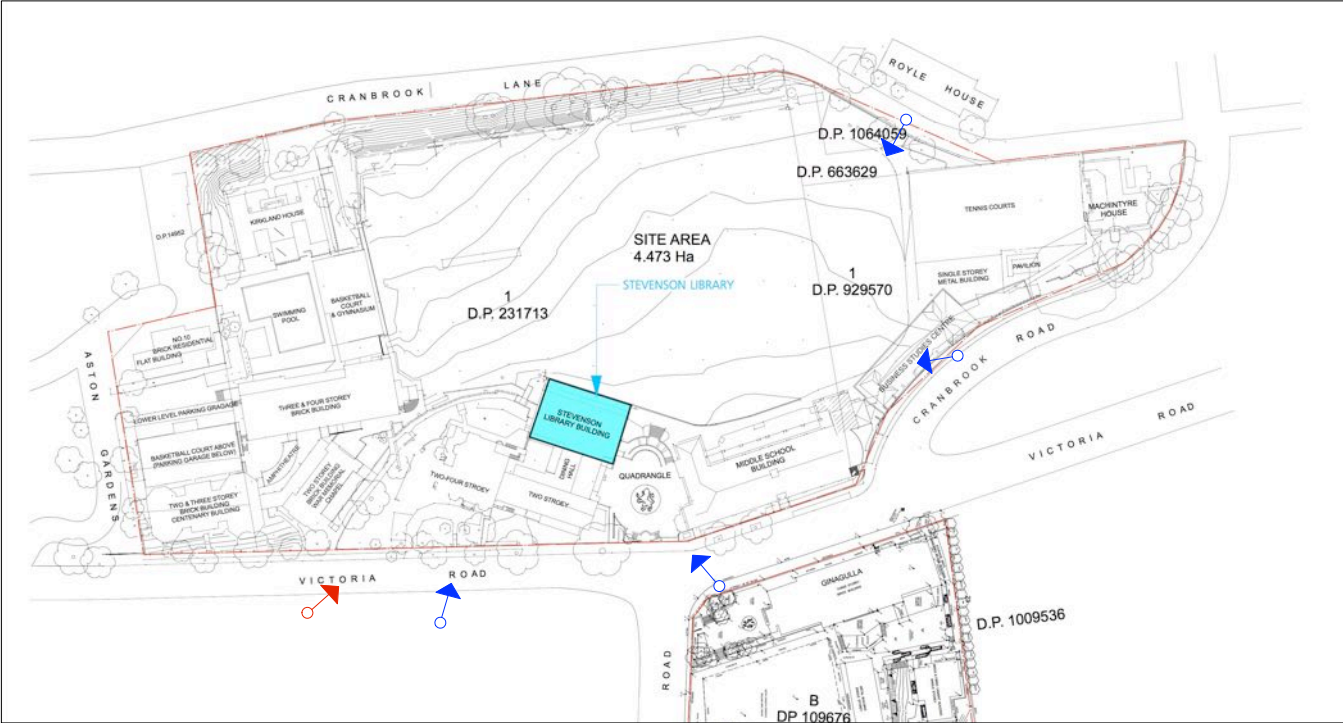
1 View Impact Location 1 - Before
15A Ginahgulla, Bellevue Hill NSW



Photo: The Photography Business



2 Street Perspective - After



- GENERAL NOTES**
- Consult with ALL relevant authorities prior to commencing works
 - DO NOT scale. All dimensions are nominal + should be confirmed on site prior to commencement
 - Obtain setting out information from architect PRIOR to commencement
 - Bring discrepancies to the immediate attention of the Architect
 - If unsure of any aspect of the works seek instruction from the Architect before proceeding
 - All drawings must be read in conjunction with the council consent, specification, schedules, site notes + instructions issued by the Architect
 - This material / work is protected by Copyright

- CONSULTANTS**
- TPCS
Quantity Surveyors
 - BBC
Planning Consultant
 - ACV
Mechanical Engineer
 - Code Performance
Accessibility Consultant
 - PBE
Structural Engineer
 - BCG
BCA Consultant
 - JCL
Hydraulic Engineer
 - Riley Mac
Fire Consultant
 - MCD
Fire Engineer
 - UMEA
Electrical Engineer
 - BCG
BCA Consultant
 - Bowdridge Williams
Surveyors



CLIENT
STEVEN ADAMS
THE SCOTS COLLEGE

PROJECT
MAJOR ALTERATIONS + ADDITIONS TO
THE STEVENSON LIBRARY (SSD 8922)

ADDRESS
29-53 Victoria Rd
Bellevue Hill, NSW

DRAWING TITLE
Perspective Views
Before + After Montage

DRAWN BY
JC, CF, JW, ZW

SCALE
NTS

ISSUE
SEARS

REVISION
S1

DATE
JUNE 2018

DRAWING NUMBER

SSD1.02/17-405

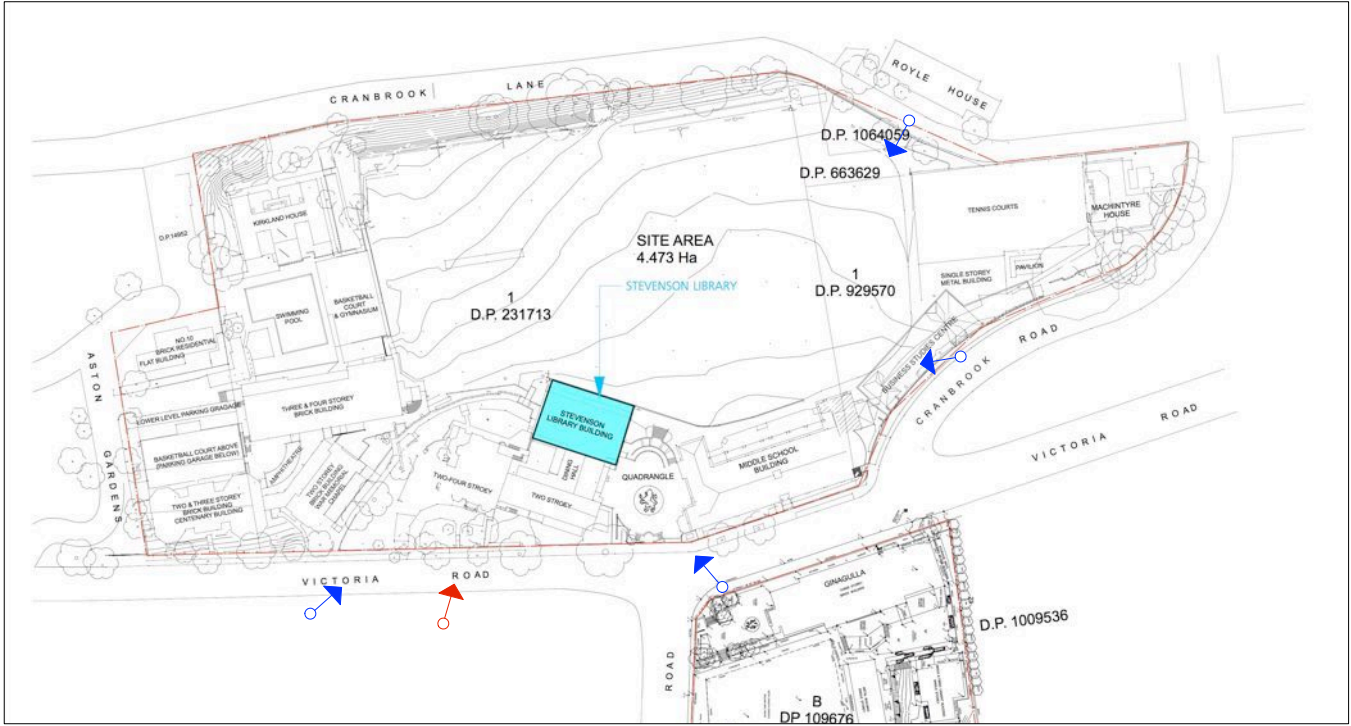


Photo: The Photography Business

1 Street Perspective - Before



2 Street Perspective - After



- GENERAL NOTES**
- Consult with ALL relevant authorities prior to commencing works
 - DO NOT scale. All dimensions are nominal + should be confirmed on site prior to commencement
 - Obtain setting out information from architect PRIOR to commencement
 - Bring discrepancies to the immediate attention of the Architect
 - If unsure of any aspect of the works seek instruction from the Architect before proceeding
 - All drawings must be read in conjunction with the council consent, specification, schedules, site notes + instructions issued by the Architect
 - This material / work is protected by Copyright

- CONSULTANTS**
- TPGS
Quantity Surveyors
 - BBC
Planning Consultant
 - ACV
Mechanical Engineer
 - Code Performance
Accessibility Consultant
 - PBE
Structural Engineer
 - BCG
BCA Consultant
 - JCL
Hydraulic Engineer
 - Riley Mac
Fire Consultant
 - MCD
Fire Engineer
 - UMEA
Electrical Engineer
 - BCG
BCA Consultant
 - Bowdridge Williams
Surveyors



CLIENT
 STEVEN ADAMS
 THE SCOTS COLLEGE

PROJECT
 MAJOR ALTERATIONS + ADDITIONS TO
 THE STEVENSON LIBRARY (SSD 8922)

ADDRESS
 29-53 Victoria Rd
 Bellevue Hill, NSW

DRAWING TITLE
 Perspective Views
 Before + After Montage

DRAWN BY
 JC, CF, JW, ZW

SCALE
 NTS

ISSUE
 PRELIMINARY

REVISION
 S1

DATE
 JUNE 2018

DRAWING NUMBER

SSD1.02/17-406

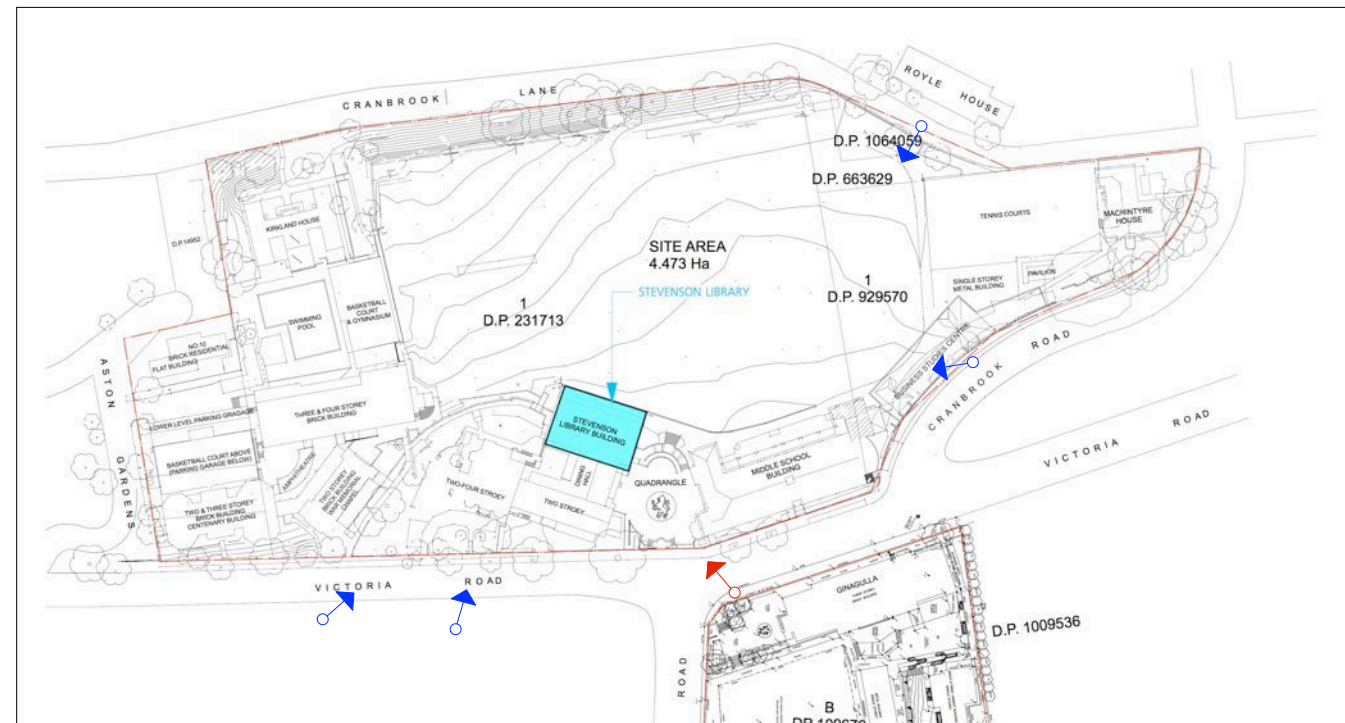


Photo: The Photography Business



Street Perspective - After

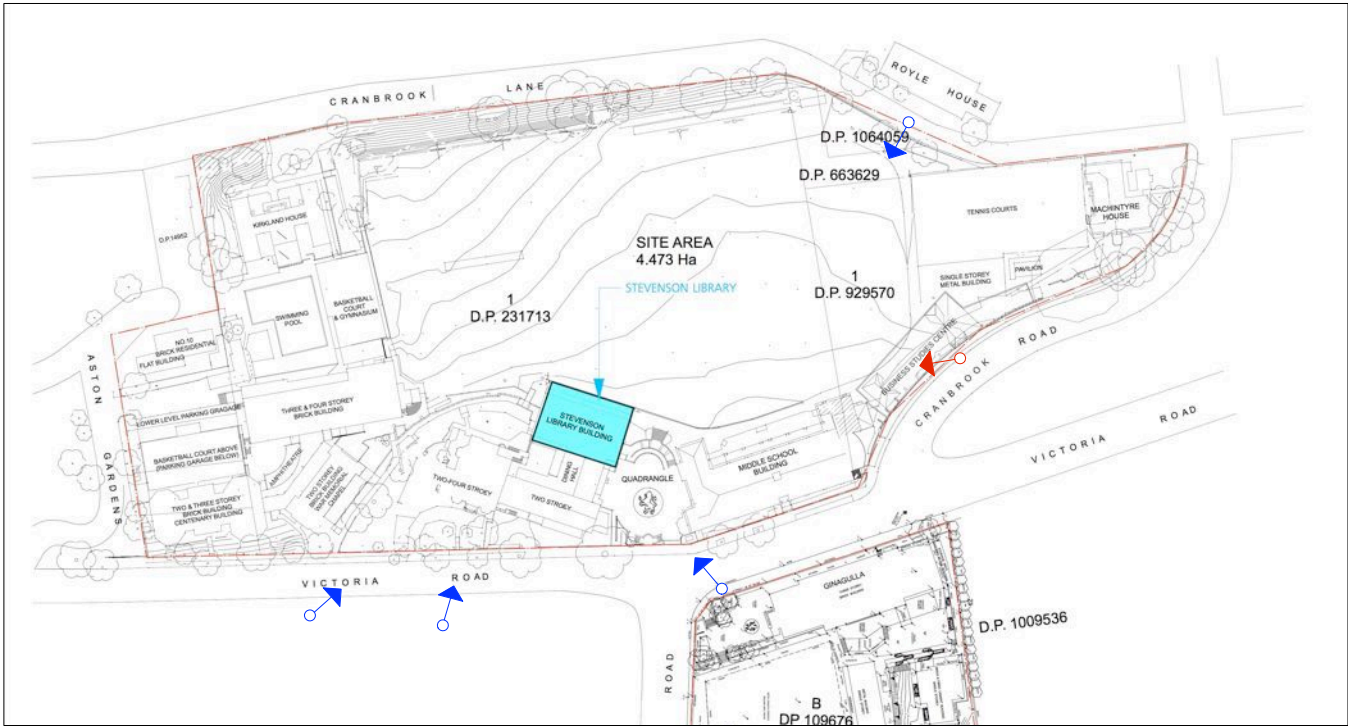


Photo: The Photography Business

1 Street Perspective - Before



2 Street Perspective - After



- GENERAL NOTES**
- Consult with ALL relevant authorities prior to commencing works
 - DO NOT scale. All dimensions are nominal + should be confirmed on site prior to commencement
 - Obtain setting out information from architect PRIOR to commencement
 - Bring discrepancies to the immediate attention of the Architect
 - If unsure of any aspect of the works seek instruction from the Architect before proceeding
 - All drawings must be read in conjunction with the council consent, specification, schedules, site notes + instructions issued by the Architect
 - This material / work is protected by Copyright

- CONSULTANTS**
- TPCS
Quantity Surveyors
 - BBC
Planning Consultant
 - ACV
Mechanical Engineer
 - Code Performance
Accessibility Consultant
 - PBE
Structural Engineer
 - BCG
BCA Consultant
 - JCL
Hydraulic Engineer
 - Riley Mac
Fire Consultant
 - MCD
Fire Engineer
 - UMEA
Electrical Engineer
 - BCG
BCA Consultant
 - Bowdridge Williams
Surveyors



CLIENT
STEVEN ADAMS
THE SCOTS COLLEGE

PROJECT
MAJOR ALTERATIONS + ADDITIONS TO
THE STEVENSON LIBRARY (SSD 8922)

ADDRESS
29-53 Victoria Rd
Bellevue Hill, NSW

DRAWING TITLE
Perspective Views
Before + After Montage

DRAWN BY
JC, CF, JW, ZW

SCALE
NTS

ISSUE
PRELIMINARY

REVISION
S1

DATE
JUNE 2018

DRAWING NUMBER

SSD1.02/17-408

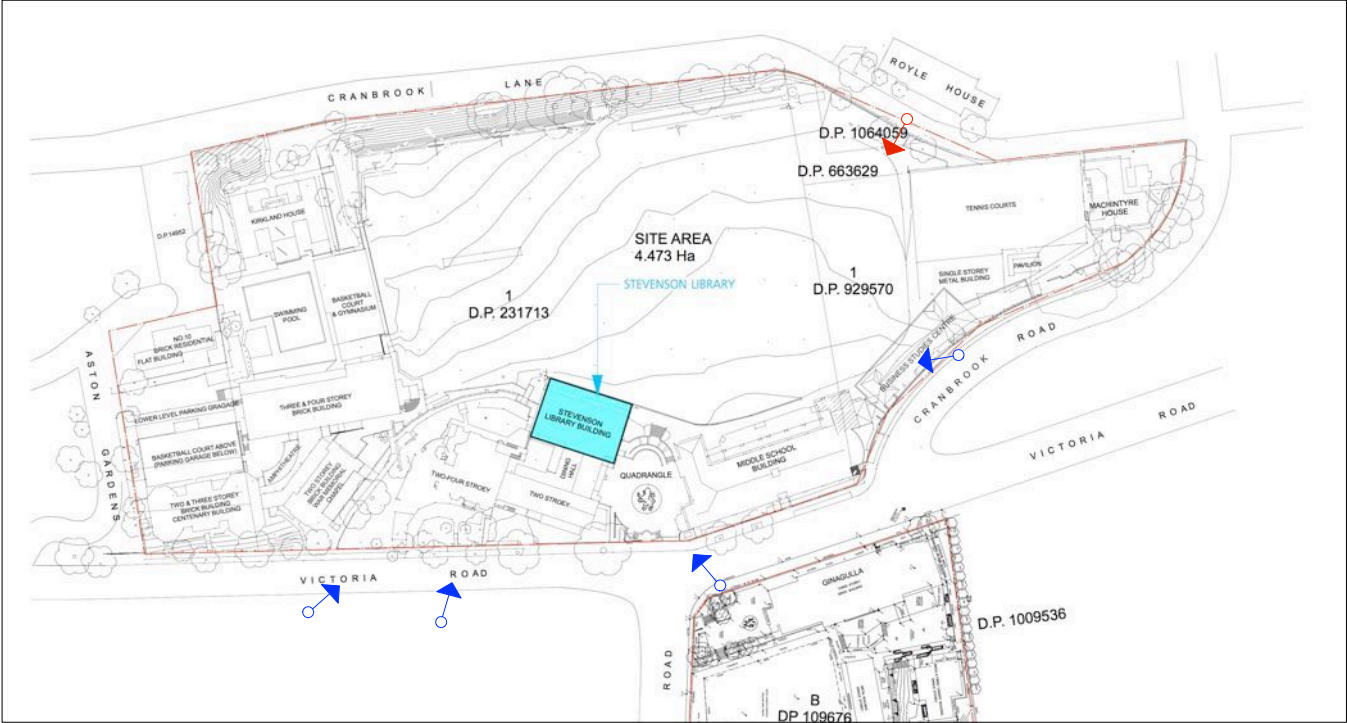


Photo: The Photography Business

1 View From Laneway - Before



2 View From Laneway - After



- GENERAL NOTES**
- Consult with ALL relevant authorities prior to commencing works
 - DO NOT scale. All dimensions are nominal + should be confirmed on site prior to commencement
 - Obtain setting out information from architect PRIOR to commencement
 - Bring discrepancies to the immediate attention of the Architect
 - If unsure of any aspect of the works seek instruction from the Architect before proceeding
 - All drawings must be read in conjunction with the council consent, specification, schedules, site notes + instructions issued by the Architect
 - This material / work is protected by Copyright

- CONSULTANTS**
- TPCS
Quantity Surveyors
 - BBC
Planning Consultant
 - ACV
Mechanical Engineer
 - Code Performance
Accessibility Consultant
 - PBE
Structural Engineer
 - BCG
BCA Consultant
 - JCL
Hydraulic Engineer
 - Riley Mac
Fire Consultant
 - MCD
Fire Engineer
 - UMEA
Electrical Engineer
 - BCG
BCA Consultant
 - Beveridge Williams
Surveyors



CLIENT
STEVEN ADAMS
THE SCOTS COLLEGE

PROJECT
MAJOR ALTERATIONS + ADDITIONS TO
THE STEVENSON LIBRARY (SSD 8922)

ADDRESS
29-53 Victoria Rd
Bellevue Hill, NSW

DRAWING TITLE
Perspective Views
Before + After Montage

DRAWN BY
JC, CF, JW, ZW

SCALE
NTS

ISSUE
PRELIMINARY

REVISION
S1

DATE
JUNE 2018

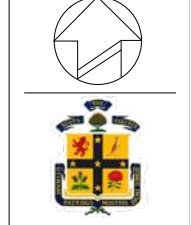
DRAWING NUMBER

SSD1.02/17-410

GENERAL NOTES

- Consult with ALL relevant authorities prior to commencing works
- DO NOT scale. All dimensions are nominal - should be confirmed on site prior to commencement
- Obtain setting out information from architect PRIOR to commencement
- Bring discrepancies to the immediate attention of the Architect
- If unsure of any aspect of the works seek instruction from the Architect before proceeding
- All drawings must be read in conjunction with the council consent, specification, schedules, site notes + instructions issued by the Architect
- This material / work is protected by Copyright

- CONSULTANTS**
- TPOS
Quantity Surveyors
 - BBC
Planning Consultant
 - ACV
Mechanical Engineer
 - Code Performance
Accessibility Consultant
 - PSE
Structural Engineer
 - BCG
BCA Consultant
 - JCI
Hydraulic Engineer
 - Riley Mac
Fire Consultant
 - MCD
Fire Engineer
 - UMEA
Electrical Engineer
 - BCG
BCA Consultant
 - Dawridge Williams
Surveyors



CLIENT
STEVEN ADAMS
THE SCOTS COLLEGE

PROJECT
MAJOR ALTERATIONS + ADDITIONS TO THE STEVENSON LIBRARY (SSD 8922)

ADDRESS
58 Victoria Road
Bellevue Hill, NSW

DRAWING TITLE
PROPOSED VISUAL ANALYSIS
LOCATION POINTS

DRAWN BY
JC, CF, JW, ZW

SCALE
NTS

ISSUE
SEARS

REVISION
S1

DATE
JUNE 2018

DRAWING NUMBER
SSD1.02/17-440



The Cottage

1 View Point Positions
 58 Victoria Road, Bellevue Hill NSW

VP11 Camera: 8C Coordinate: 338 340.51 Easting 6 250 160.31 Northing Camera RL.82.15 Ground RL.80.55	VP9 Camera: 8E Coordinate: 338 328.14 Easting 6 250 149.89 Northing Camera RL.87.93 Ground RL.86.33
--	---

58 Victoria Rd.

 View from BF  View from GF
--

The Cottage

 View from BF  View from GF
--



Front door

1
Front of House
East Elevation



Master Bedroom

Formal Living Room

Cottage Living Room

Cottage Master Bedroom

2
Side of House
North Elevation

GENERAL NOTES
- Consult with ALL relevant authorities prior to commencing works
- DO NOT scale. All dimensions are nominal + should be confirmed on site prior to commencement
- Obtain setting out information from architect PRIOR to commencement
- Bring discrepancies to the immediate attention of the Architect
- If unsure of any aspect of the works seek instruction from the Architect before proceeding
- All drawings must be read in conjunction with the council consent, specification, schedules, site notes + instructions issued by the Architect
- This material / work is protected by Copyright

CONSULTANTS
TPGS
Quantity Surveyors
BBC
Planning Consultant
ACV
Mechanical Engineer
Code Performance
Accessibility Consultant
PBE
Structural Engineer
BCG
BCA Consultant
JCI
Hydraulic Engineer
Hilly Mac
Fire Consultant
MCD
Fire Engineer
LIMEA
Electrical Engineer
BCG
BCA Consultant
Dewaridge Williams
Surveyors



CLIENT
STEVEN ADAMS
THE SCOTS COLLEGE

PROJECT
MAJOR ALTERATIONS + ADDITIONS TO
THE STEVENSON LIBRARY (SSD 8922)

ADDRESS
58 Victoria Road
Bellevue Hill, NSW

DRAWING TITLE
PROPOSED VISUAL ANALYSIS
HOUSE ELEVATIONS

DRAWN BY
JC, CF, JW, ZW

SCALE
NTS

ISSUE
SEARS

REVISION
S1

DATE
JUNE 2018

DRAWING NUMBER

SSD1.02/17-441



Photo: H. Pilcher - Impact Group
Date: 24 May 2018

1 View Point 1 View Over Side Boundary - BEFORE
58 Victoria Road, Bellevue Hill NSW

A photograph of a formal garden, likely the gardens of the Palace of Versailles. A light-colored gravel path curves through the foreground, bordered by low, rounded hedges. To the left, a large, leafy bush with small white flowers is in the foreground. In the background, a tall, dark green hedge runs across the middle ground. Beyond the hedge, a town with several buildings, including a church with a tall spire, is visible. The town is situated on a hillside overlooking a body of water, which appears to be the sea. The sky is bright and clear. The overall scene is a well-maintained, formal garden with a view of a coastal town.

2 View Point 1 View Over Side Boundary - AFTER
58 Victoria Road, Bellevue Hill NSW