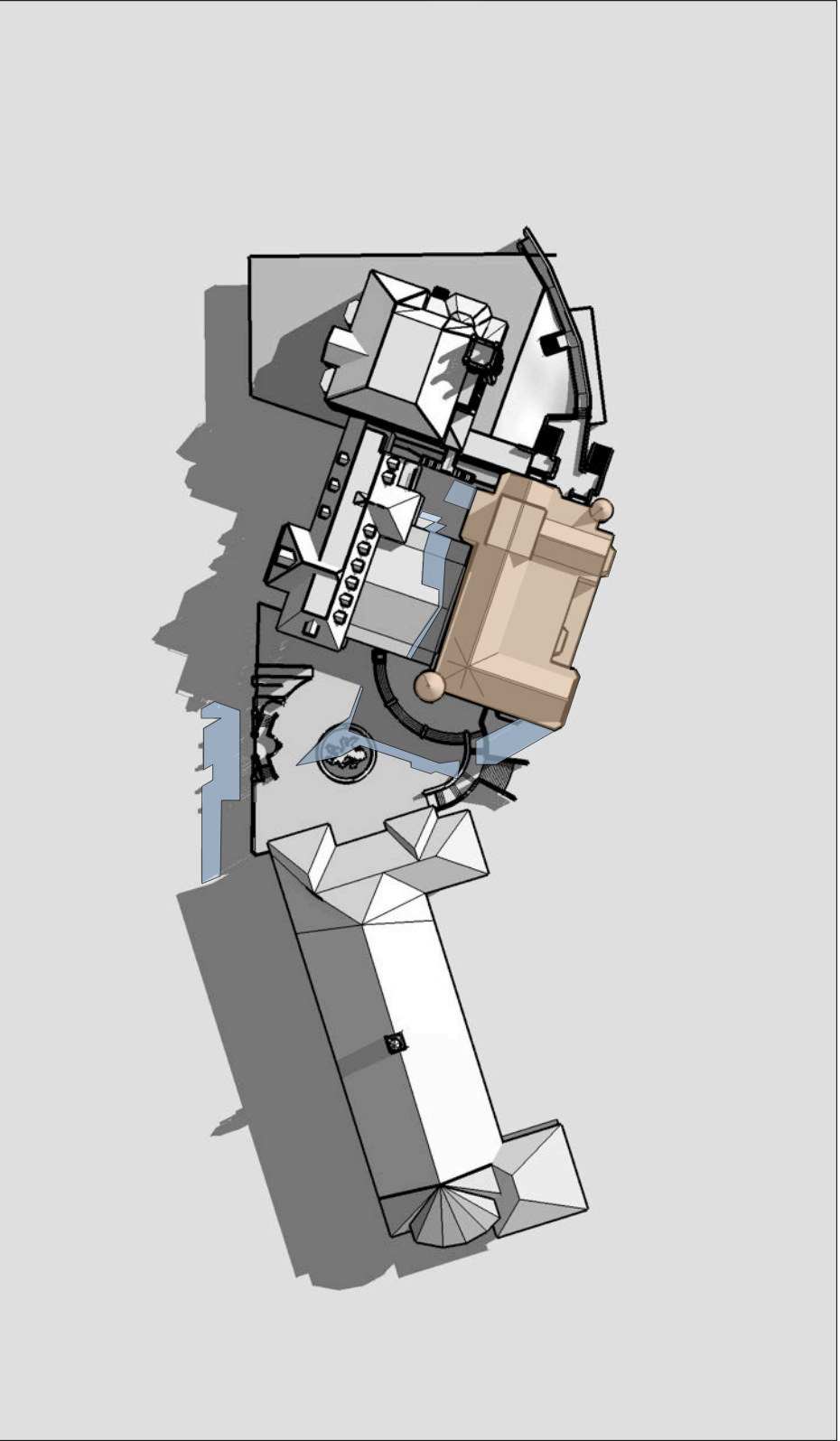


1 Existing 9AM
March / September 22



2 Proposed 9AM
March / September 22

LEGEND:

- New building
- Exg Shadow
- New shadow

JICA architects
Education / Conservation / Residential
PO Box 780 Broken Bay
NSW 1580 Australia
T 02 9327 6706
E info@jica-architects.com.au
W jica-architects.com.au
JICA Architects Pty Ltd ABN 53 128 457 784
Nominated Architect
Jenny Cocking NSW 188855 AIA

GENERAL NOTES

- Consult with ALL relevant authorities prior to commencing works
- DO NOT scale. All dimensions are nominal + should be confirmed on site prior to commencement
- Obtain setting out information from architect PRIOR to commencement
- Bring discrepancies to the immediate attention of the Architect
- If unsure of any aspect of the works seek instruction from the Architect before proceeding
- All drawings must be read in conjunction with the council consent, specification, schedules, site notes + instructions issued by the Architect
- This material / work is protected by Copyright

CONSULTANTS

TPGS
Quantity Surveyors

BBC
Planning Consultant

ACV
Mechanical Engineer

Code Performance
Accessibility Consultant

PSE
Structural Engineer

BCG
BCA Consultant

JCL
Hydraulic Engineer

Riley Mac
Fire Consultant

MCD
Fire Engineer

UMEA
Electrical Engineer

BCG
BCA Consultant

Bowridge Williams
Surveyors

CLIENT
STEVEN ADAMS
THE SCOTS COLLEGE

PROJECT
MAJOR ALTERATIONS + ADDITIONS TO
THE STEVENSON LIBRARY (SSD 8922)

ADDRESS
29-53 Victoria Rd
Bellevue Hill, NSW

DRAWING TITLE
SHADOW DIAGRAMS

DRAWN BY
JC, CF, JW, ZW

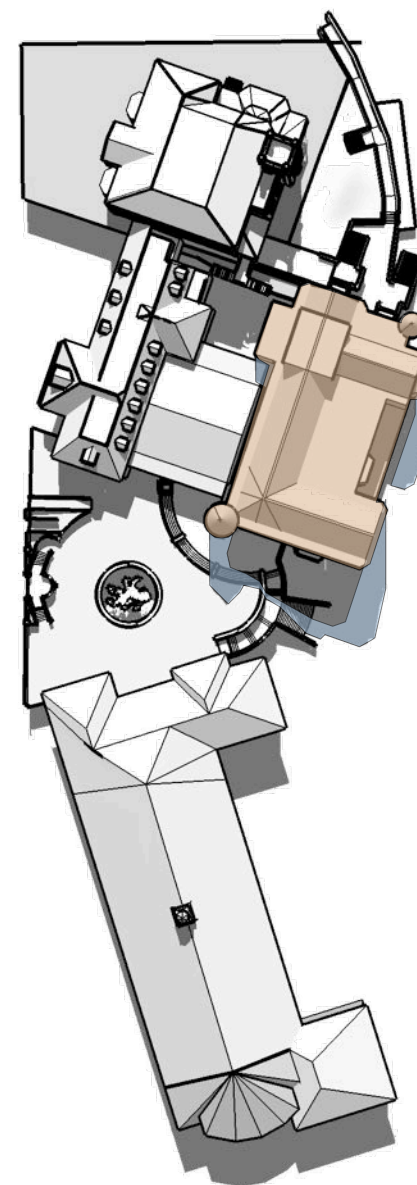
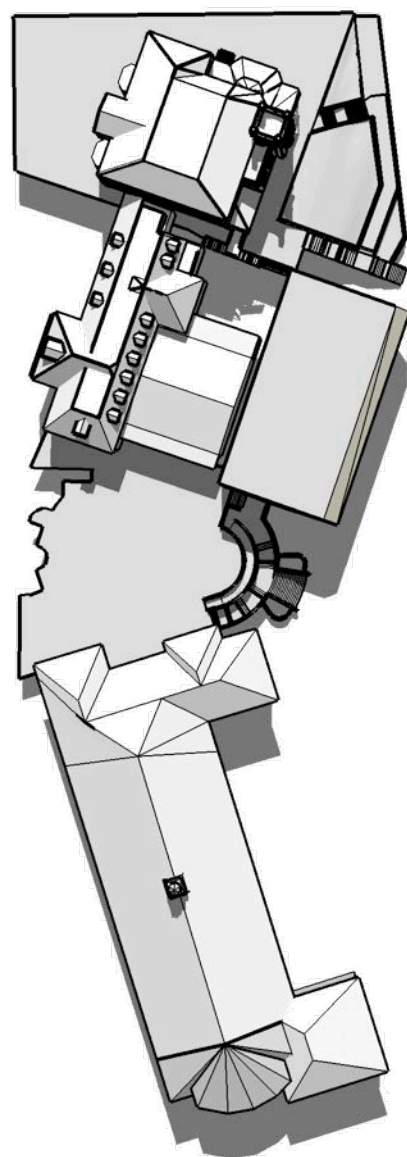
SCALE
NTS

ISSUE
SEARS




REVISION
S1

DATE
JUNE 2018

DRAWING NUMBER
SSD1.02/17-412



LEGEND:

-  New building
 Exg Shadow
 New shadow

GENERAL NOTES

- Consult with ALL relevant authorities prior to commencing works
- DO NOT scale. All dimensions are nominal - should be confirmed on site prior to commencement
- Obtain setting out information from architect PRIOR to commencement
- Bring discrepancies to the immediate attention of the Architect
- If unsure of any aspect of the works seek instruction from the Architect before proceeding
- All drawings must be read in conjunction with the council consent, specification, schedules, site notes + instructions issued by the Architect
- This material / work is protected by Copyright

CONSULTANTS

TPQS
Quantity Surveyors

B8C
Planning Consultant

ADV

Mechanical Engineer

Code Performance
Accessibility Consult

PRE

Structural Engineer

BCG
BCA Consultant

101

Hydraulic Engineer

Riley Mac
Fire Consultant

MCO

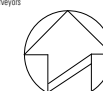
Fire Engineer

UMEÄ
Electrical Engineering

Electrical Engineer

000

BCA Consultant

Beveridge Williams
Sullivan & Krass

CLIENT
STEVEN ADAMS
THE SCOTS COLLEGE

PROJECT
MAJOR ALTERATIONS + ADDITIONS TO
THE STEVENSON LIBRARY [SSD 8922]

ADDRESS
29-53 Victoria Rd
Bellevue Hill, NSW

DRAWING TITLE
SHADOW DIAGRAMS

DRAWN BY
JC, CF, JW, ZW

SCALE	NTS
-------	-----

ISSUE

SEARS

REVISION S1

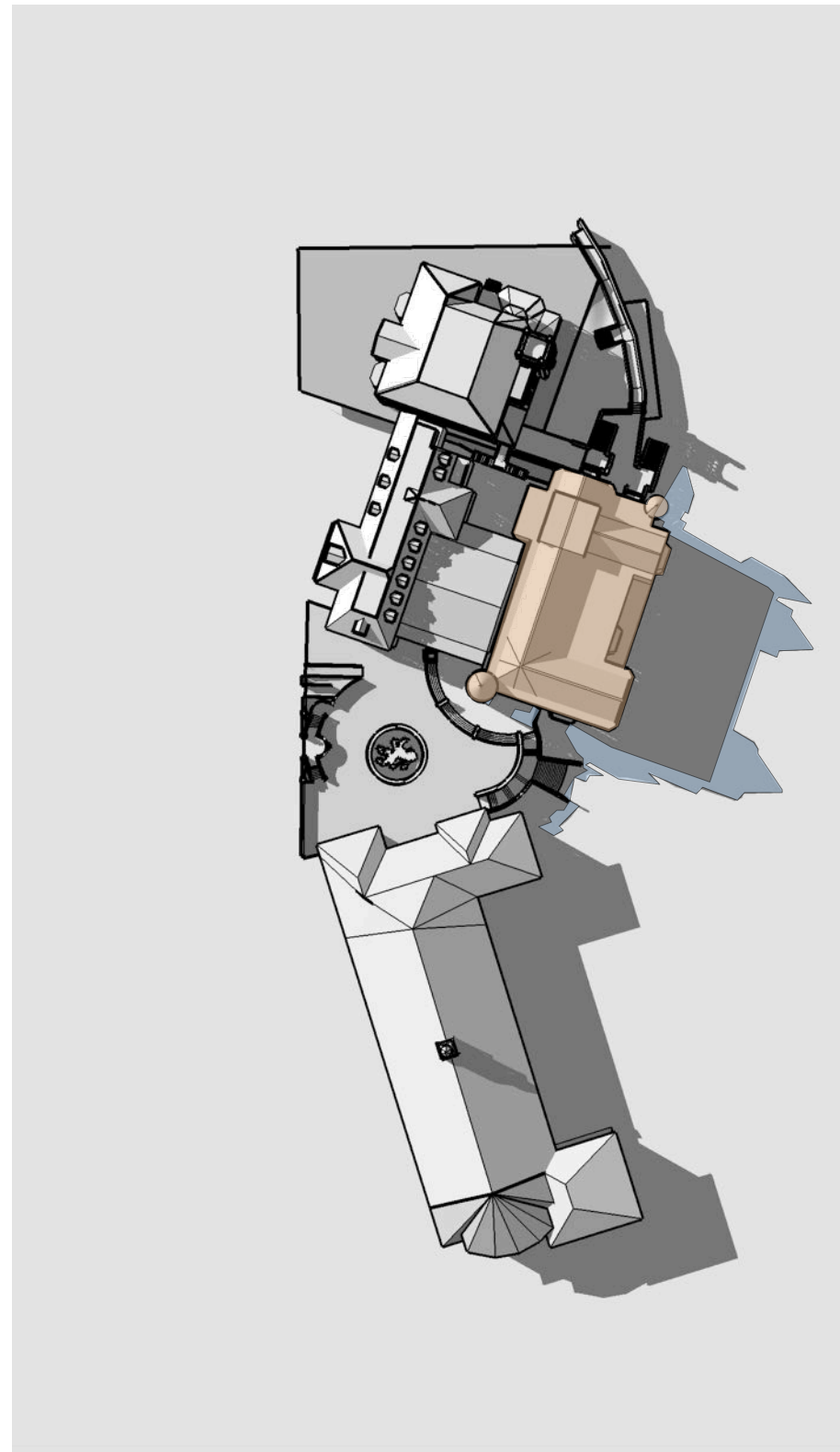
DATE JUNE 2018

DRAWING NUMBER

SSD1.02/17-413



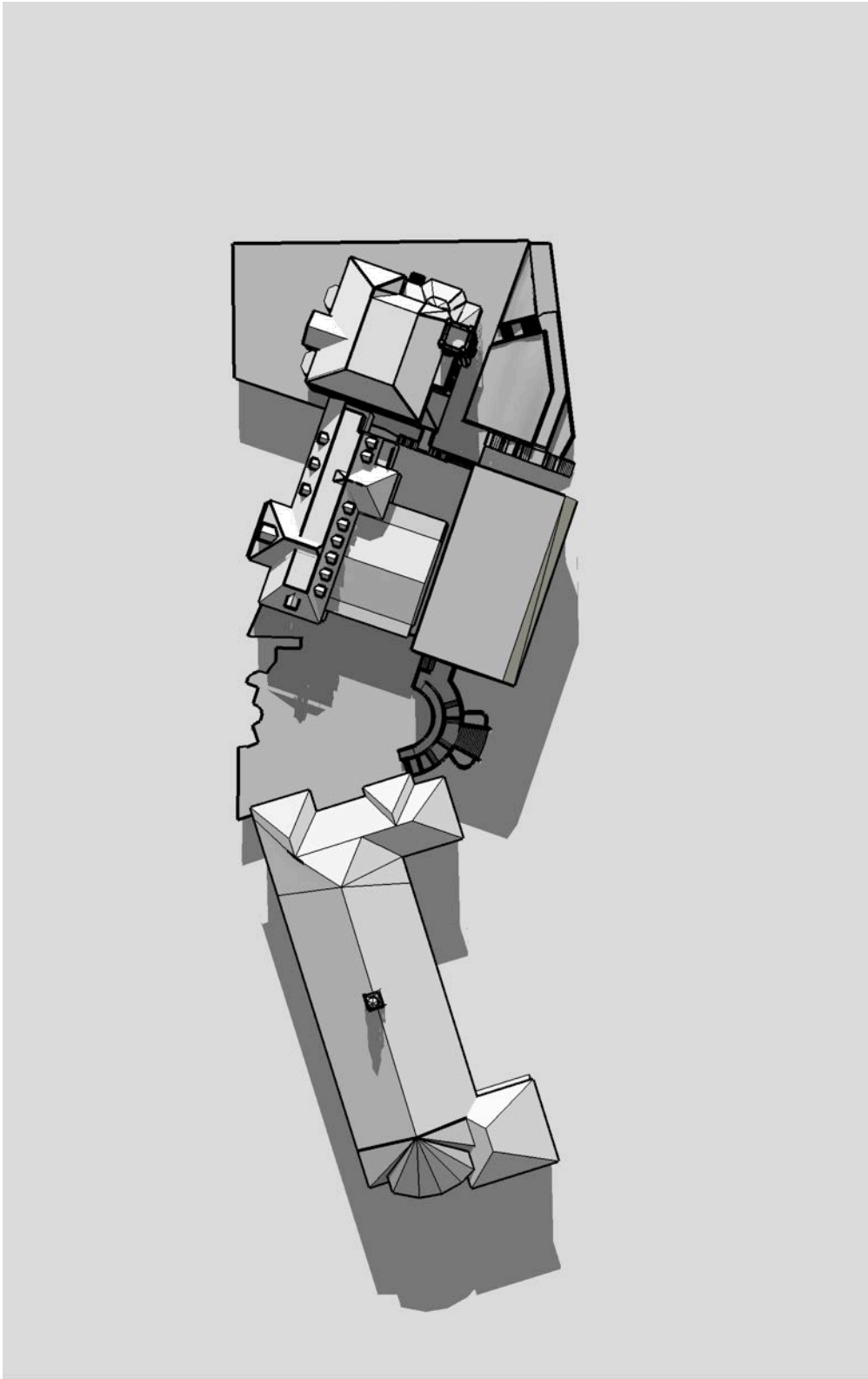
1 Existing 3PM
March / September 22



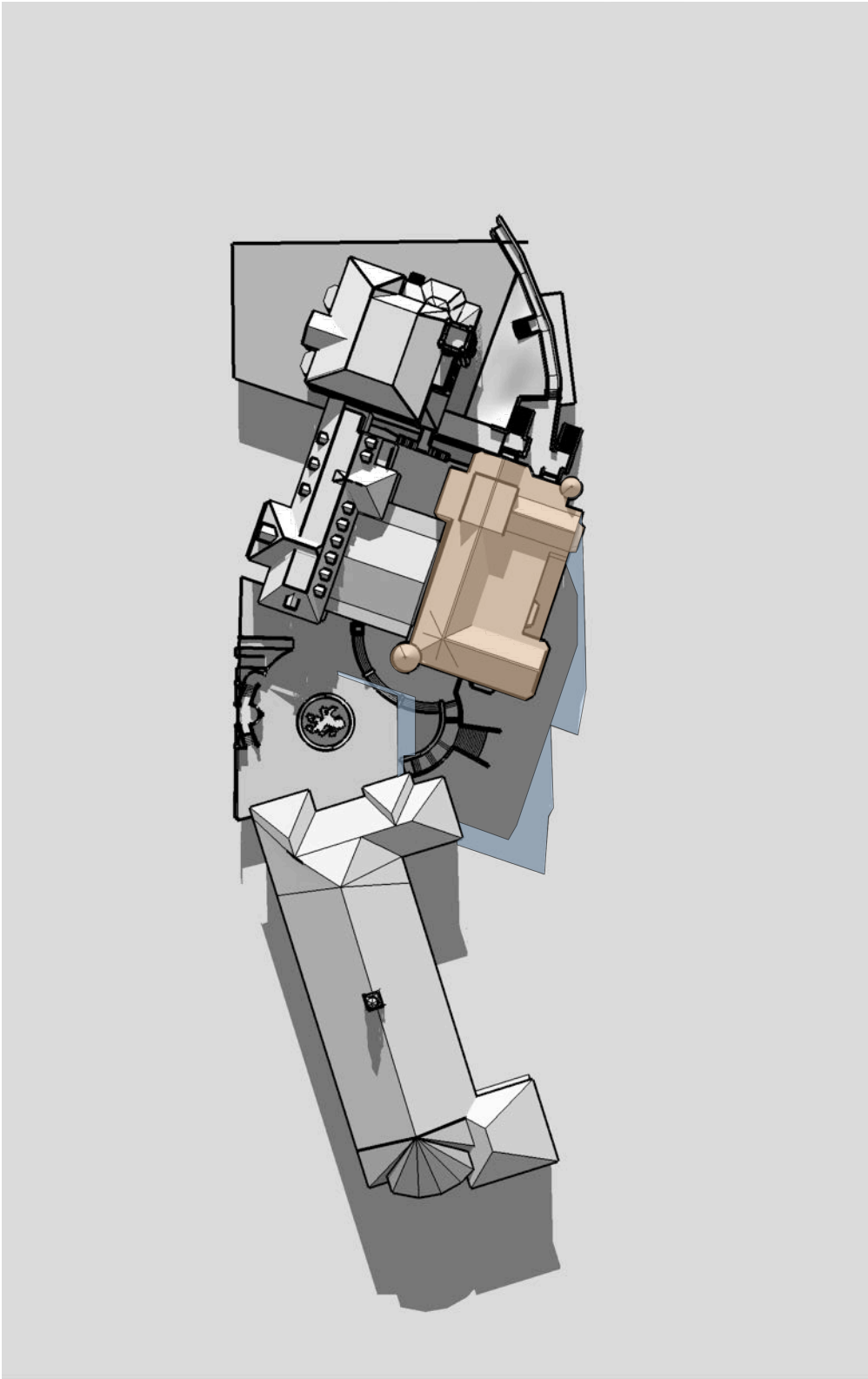
2 Proposed 3PM
March / September 22

LEGEND:

- New building
- Exg Shadow
- New shadow



1 Existing 12PM
June 22



2 Proposed 12PM
June 22

LEGEND:

- New building
- Exg Shadow
- New shadow

GENERAL NOTES

- Consult with ALL relevant authorities prior to commencing works
- DO NOT scale. All dimensions are nominal + should be confirmed on site prior to commencement
- Obtain setting out information from architect PRIOR to commencement
- Bring discrepancies to the immediate attention of the Architect
- If unsure of any aspect of the works seek instruction from the Architect before proceeding
- All drawings must be read in conjunction with the council consent, specification, schedules, site notes + instructions issued by the Architect
- This material / work is protected by Copyright

CONSULTANTS

TPGS
Quantity Surveyors

BBC
Planning Consultant

ACV
Mechanical Engineer

Code Performance
Accessibility Consultant

PSE
Structural Engineer

BCG
BCA Consultant

JCL
Hydraulic Engineer

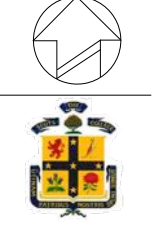
Riley Mac
Fire Consultant

MCD
Fire Engineer

UMEA
Electrical Engineer

BCG
BCA Consultant

Bowridge Williams
Surveyors



CLIENT
STEVEN ADAMS
THE SCOTS COLLEGE

PROJECT
MAJOR ALTERATIONS + ADDITIONS TO
THE STEVENSON LIBRARY (SSD 8922)

ADDRESS
29-53 Victoria Rd
Bellevue Hill, NSW

DRAWING TITLE
SHADOW DIAGRAMS

DRAWN BY
JC, CF, JW, ZW

SCALE
NTS

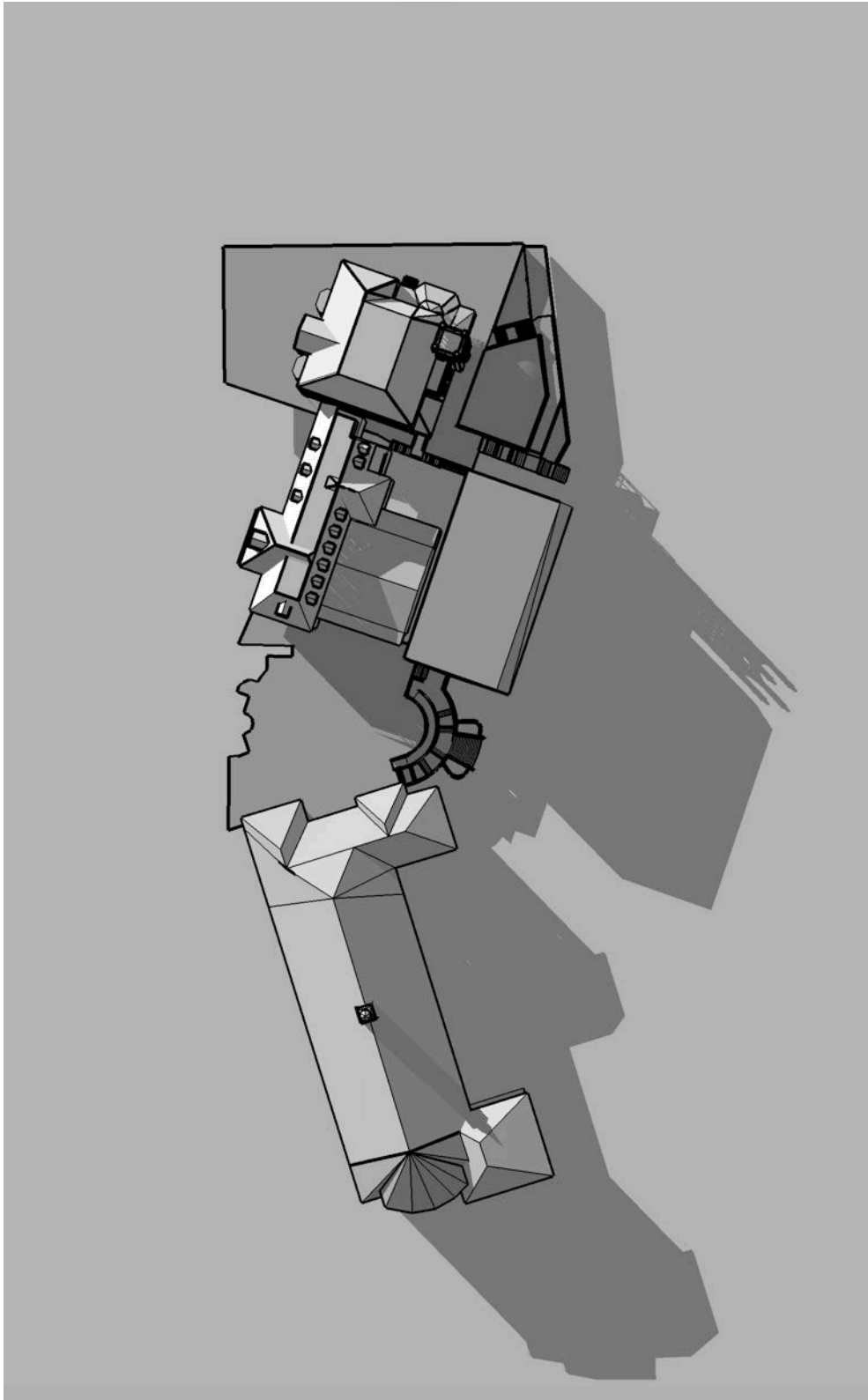
ISSUE
SEARS

REVISION
S1

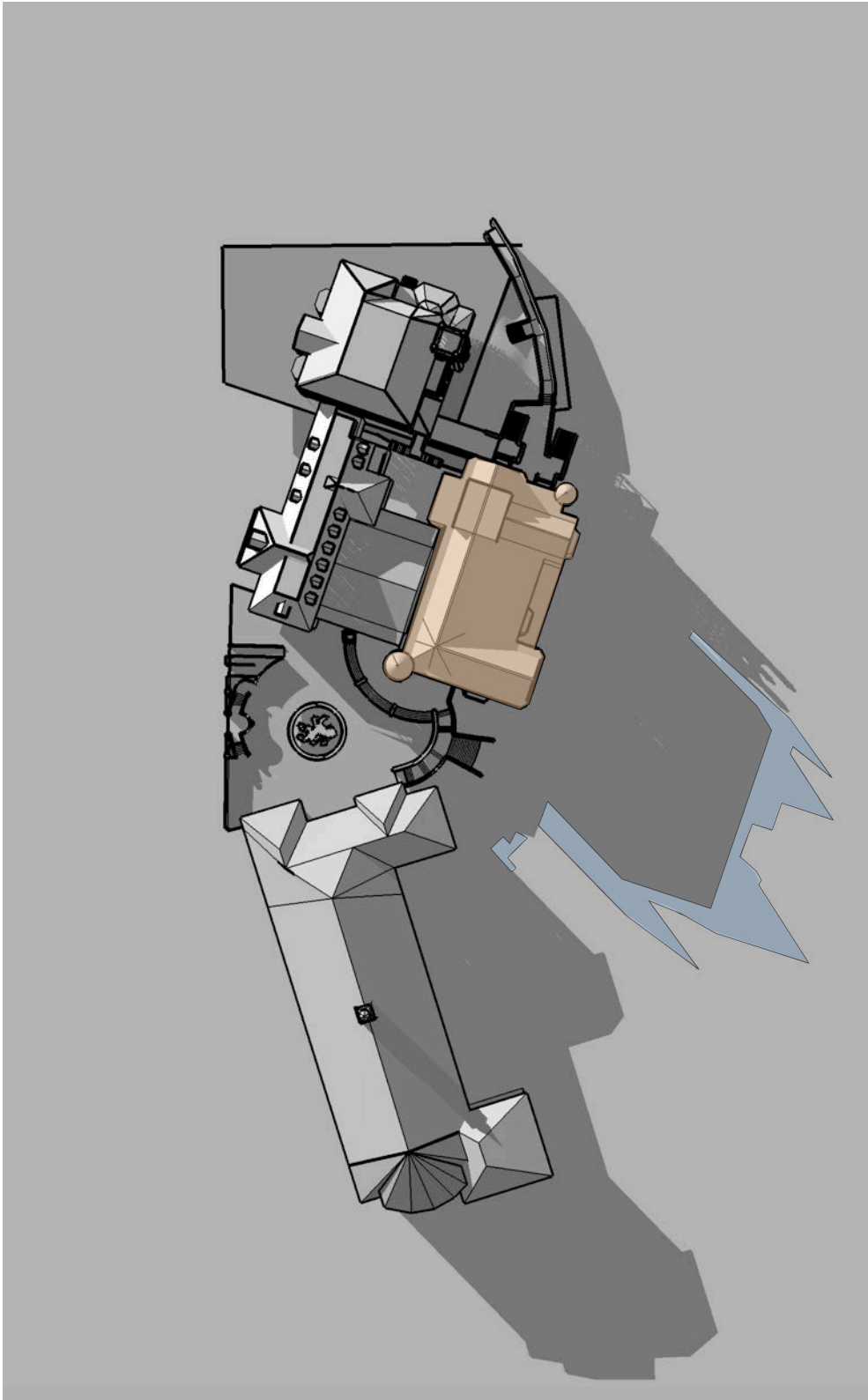
DATE
JUNE 2018

DRAWING NUMBER

SSD1.02/17-416



1 Existing 3PM
June 22



2 Proposed 3PM
June 22

LEGEND:

- New building
- Exg Shadow
- New shadow

- GENERAL NOTES
- Consult with ALL relevant authorities prior to commencing works
 - DO NOT scale. All dimensions are nominal + should be confirmed on site prior to commencement
 - Obtain setting out information from architect PRIOR to commencement
 - Bring discrepancies to the immediate attention of the Architect
 - If unsure of any aspect of the works seek instruction from the Architect before proceeding
 - All drawings must be read in conjunction with the council consent, specification, schedules, site notes + instructions issued by the Architect
 - This material / work is protected by Copyright

- CONSULTANTS
- TPGS
Quantity Surveyors
 - BBC
Planning Consultant
 - ACV
Mechanical Engineer
 - Code Performance
Accessibility Consultant
 - PSE
Structural Engineer
 - BCG
BCA Consultant
 - JCL
Hydraulic Engineer
 - Riley Mac
Fire Consultant
 - MCD
Fire Engineer
 - UMEA
Electrical Engineer
 - BCG
BCA Consultant
 - Bowridge Williams
Surveyors



CLIENT
STEVEN ADAMS
THE SCOTS COLLEGE

PROJECT
MAJOR ALTERATIONS + ADDITIONS TO
THE STEVENSON LIBRARY (SSD 8922)

ADDRESS
29-53 Victoria Rd
Bellevue Hill, NSW

DRAWING TITLE
SHADOW DIAGRAMS

DRAWN BY
JC, CF, JW, ZW

SCALE
NTS

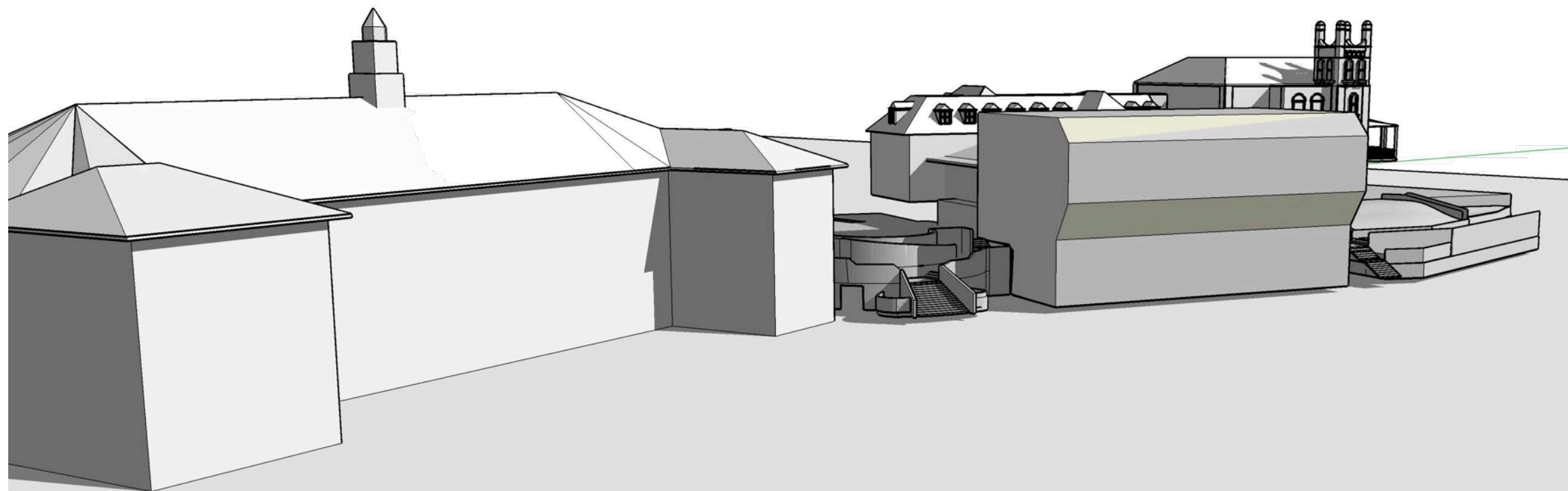
ISSUE
SEARS

REVISION
S1

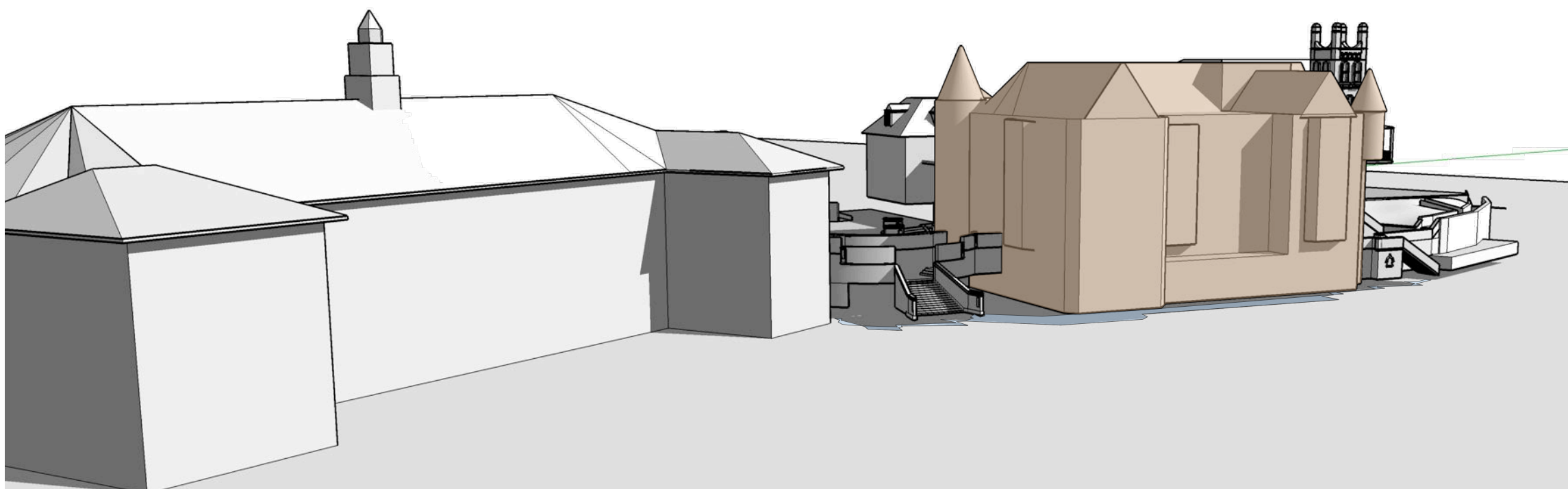
DATE
JUNE 2018

DRAWING NUMBER

SSD1.02/17-417



1 Existing 9AM
March / September 22



2 Proposed 9AM
March / September 22

LEGEND:

- New building
- Exg Shadow
- New shadow

JICA architects
 Education / Conservation / Residential
 PO Box 760 Broken Bay
 NSW 1580 Australia
 T 02 9227 6706
 E info@jica-architects.com.au
 W jica-architects.com.au
 JICA Architects Pty Ltd ABN 53 124 457 794
 Registered Architect
 John Cocking NSW 1580 NSW 1580

GENERAL NOTES

- Consult with ALL relevant authorities prior to commencing works
- DO NOT scale. All dimensions are nominal + should be confirmed on site prior to commencement
- Obtain setting out information from architect PRIOR to commencement
- Bring discrepancies to the immediate attention of the Architect
- If unsure of any aspect of the works seek instruction from the Architect before proceeding
- All drawings must be read in conjunction with the council consent, specification, schedules, site notes + instructions issued by the Architect
- This material / work is protected by Copyright

CONSULTANTS

TPGS
Quantity Surveyors

BBC
Planning Consultant

ACV
Mechanical Engineer

Code Performance
Accessibility Consultant

PBE
Structural Engineer

BCG
BCA Consultant

JCL
Hydraulic Engineer

Riley Mac
Fire Consultant

MCD
Fire Engineer

UMEA
Electrical Engineer

BCG
BCA Consultant

Bowdridge Williams
Surveyors

CLIENT
STEVEN ADAMS
THE SCOTS COLLEGE

PROJECT
MAJOR ALTERATIONS + ADDITIONS TO
THE STEVENSON LIBRARY (SSD 8922)

ADDRESS
29-53 Victoria Rd
Bellevue Hill, NSW

DRAWING TITLE
SHADOW DIAGRAMS

DRAWN BY
JC, CF, JW, ZW

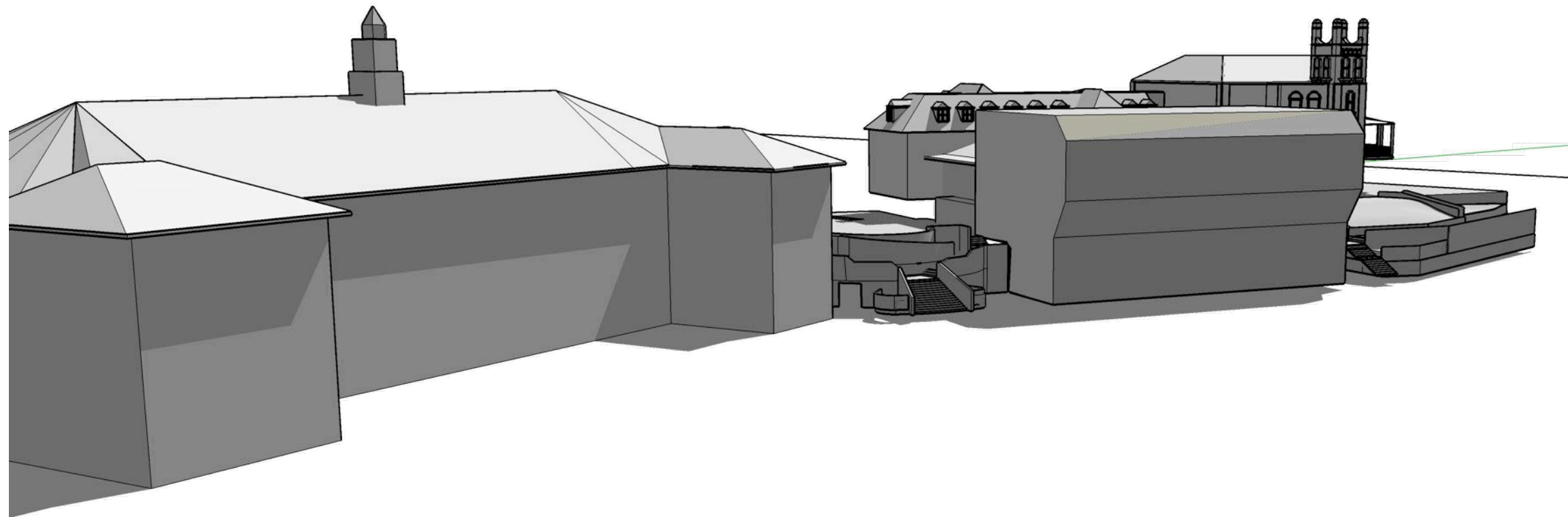
SCALE
NTS

ISSUE
SEARS

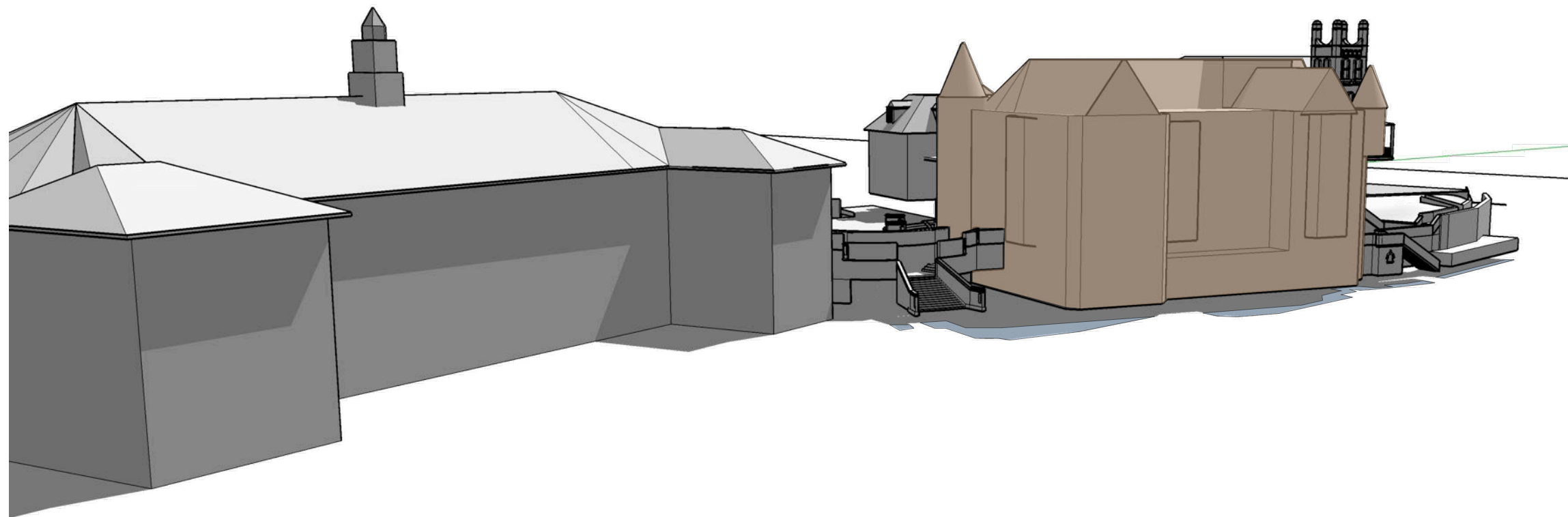
REVISION
S1

DATE
JUNE 2018

DRAWING NUMBER
SSD1.02/17-418



1 Existing 12PM
March / September 22



2 Proposed 12PM
March / September 22

LEGEND:

- New building
- Exg Shadow
- New shadow

GENERAL NOTES

- Consult with ALL relevant authorities prior to commencing works
- DO NOT scale. All dimensions are nominal + should be confirmed on site prior to commencement
- Obtain setting out information from architect PRIOR to commencement
- Bring discrepancies to the immediate attention of the Architect
- If unsure of any aspect of the works seek instruction from the Architect before proceeding
- All drawings must be read in conjunction with the council consent, specification, schedules, site notes + instructions issued by the Architect
- This material / work is protected by Copyright

CONSULTANTS

TPGS
Quantity Surveyors

BBC
Planning Consultant

ACV
Mechanical Engineer

Code Performance
Accessibility Consultant

PSE
Structural Engineer

BCG
BCA Consultant

JCL
Hydraulic Engineer

Riley Mac
Fire Consultant

MCD
Fire Engineer

UMEA
Electrical Engineer

BCG
BCA Consultant

Bowdridge Williams
Surveyors



CLIENT
STEVEN ADAMS
THE SCOTS COLLEGE

PROJECT
MAJOR ALTERATIONS + ADDITIONS TO
THE STEVENSON LIBRARY (SSD 8922)

ADDRESS
29-53 Victoria Rd
Bellevue Hill, NSW

DRAWING TITLE
SHADOW DIAGRAMS

DRAWN BY
JC, CF, JW, ZW

SCALE
NTS

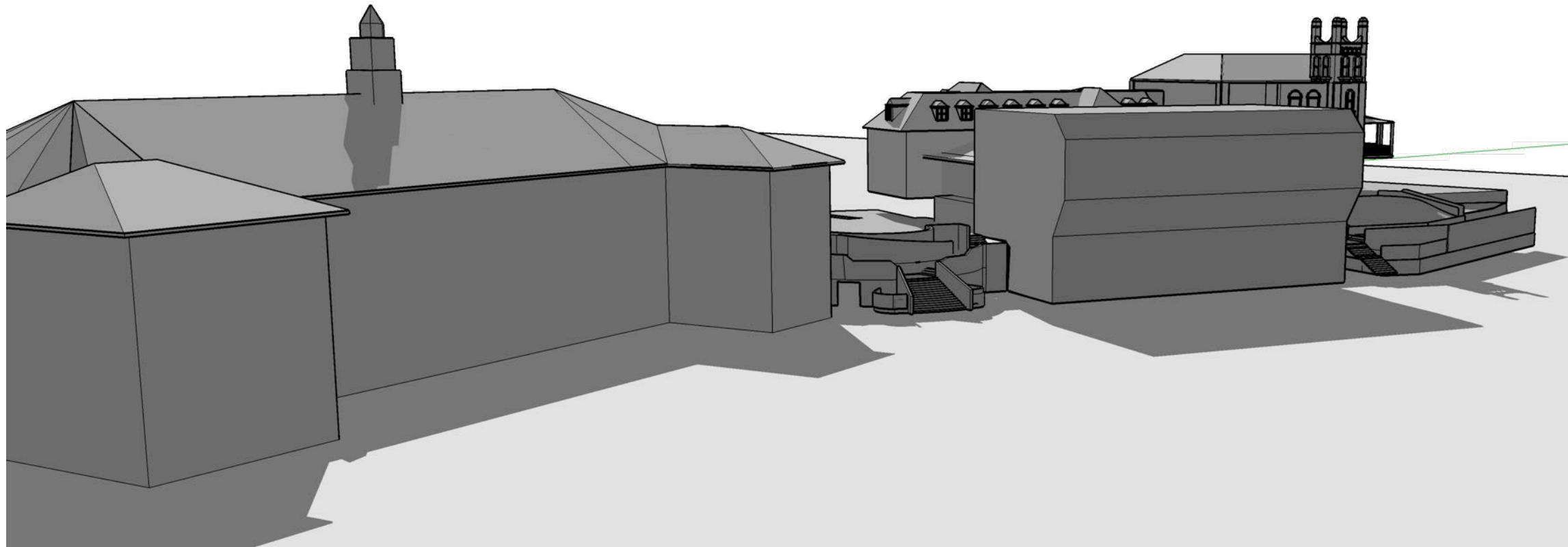
ISSUE
SEARS

REVISION
S1

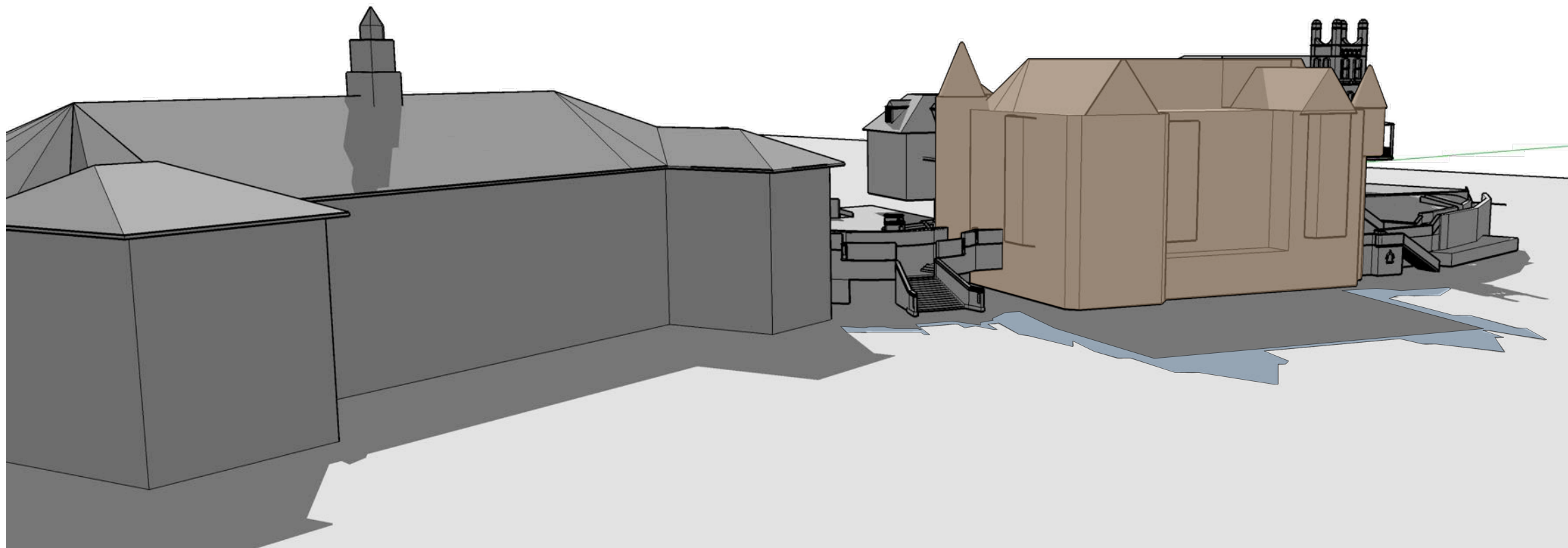
DATE
JUNE 2018

DRAWING NUMBER

SSD1.02/17-419



1 Existing 3PM
March / September 22



2 Proposed 3PM
March / September 22

LEGEND:

- New building
- Exg Shadow
- New shadow

GENERAL NOTES

- Consult with ALL relevant authorities prior to commencing works
- DO NOT scale. All dimensions are nominal + should be confirmed on site prior to commencement
- Obtain setting out information from architect PRIOR to commencement
- Bring discrepancies to the immediate attention of the Architect
- If unsure of any aspect of the works seek instruction from the Architect before proceeding
- All drawings must be read in conjunction with the council consent, specification, schedules, site notes + instructions issued by the Architect
- This material / work is protected by Copyright

CONSULTANTS

TPGS
Quantity Surveyors

BBC
Planning Consultant

ACV
Mechanical Engineer

Code Performance
Accessibility Consultant

PSE
Structural Engineer

BCG
BCA Consultant

JCL
Hydraulic Engineer

Riley Mac
Fire Consultant

MCD
Fire Engineer

UMEA
Electrical Engineer

BCG
BCA Consultant

Bowridge Williams
Surveyors



CLIENT
STEVEN ADAMS
THE SCOTS COLLEGE

PROJECT
MAJOR ALTERATIONS + ADDITIONS TO
THE STEVENSON LIBRARY (SSD 8922)

ADDRESS
29-53 Victoria Rd
Bellevue Hill, NSW

DRAWING TITLE
SHADOW DIAGRAMS

DRAWN BY
JC, CF, JW, ZW

SCALE
NTS

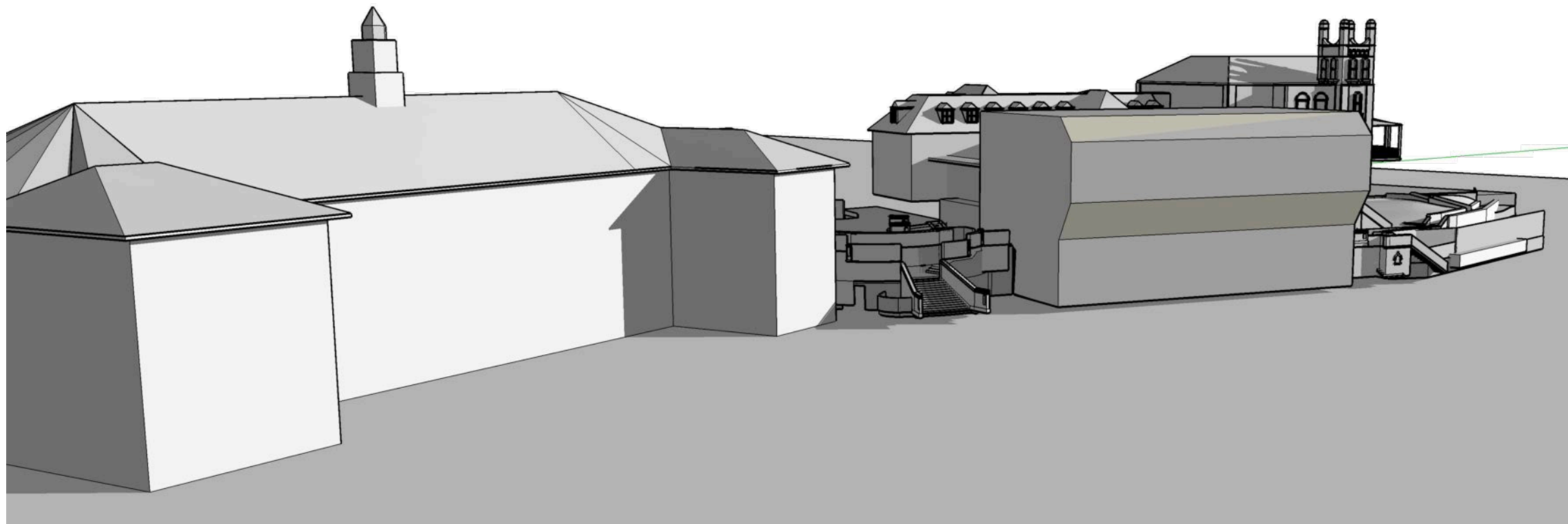
ISSUE
SEARS

REVISION
S1

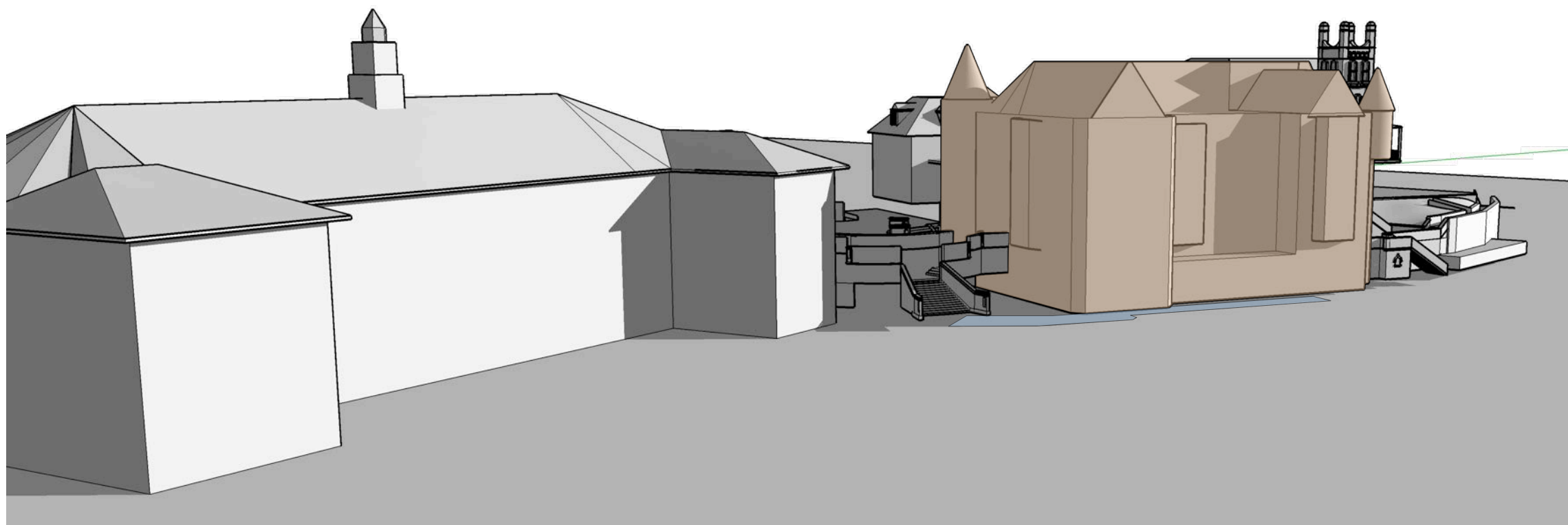
DATE
JUNE 2018

DRAWING NUMBER

SSD1.02/17-420



1 Existing 9AM
June 22



2 Proposed 9AM
June 22

LEGEND:

- New building
- Exg Shadow
- New shadow

GENERAL NOTES

- Consult with ALL relevant authorities prior to commencing works
- DO NOT scale. All dimensions are nominal + should be confirmed on site prior to commencement
- Obtain setting out information from architect PRIOR to commencement
- Bring discrepancies to the immediate attention of the Architect
- If unsure of any aspect of the works seek instruction from the Architect before proceeding
- All drawings must be read in conjunction with the council consent, specification, schedules, site notes + instructions issued by the Architect
- This material / work is protected by Copyright

CONSULTANTS

TPGS
Quantity Surveyors

BBC
Planning Consultant

ACV
Mechanical Engineer

Code Performance
Accessibility Consultant

PSE
Structural Engineer

BCG
BCA Consultant

JCL
Hydraulic Engineer

Riley Mac
Fire Consultant

MCD
Fire Engineer

UMEA
Electrical Engineer

BCG
BCA Consultant

Bowdridge Williams
Surveyors



CLIENT
STEVEN ADAMS
THE SCOTS COLLEGE

PROJECT
MAJOR ALTERATIONS + ADDITIONS TO
THE STEVENSON LIBRARY (SSD 8922)

ADDRESS
29-53 Victoria Rd
Bellevue Hill, NSW

DRAWING TITLE
SHADOW DIAGRAMS

DRAWN BY
JC, CF, JW, ZW

SCALE
NTS

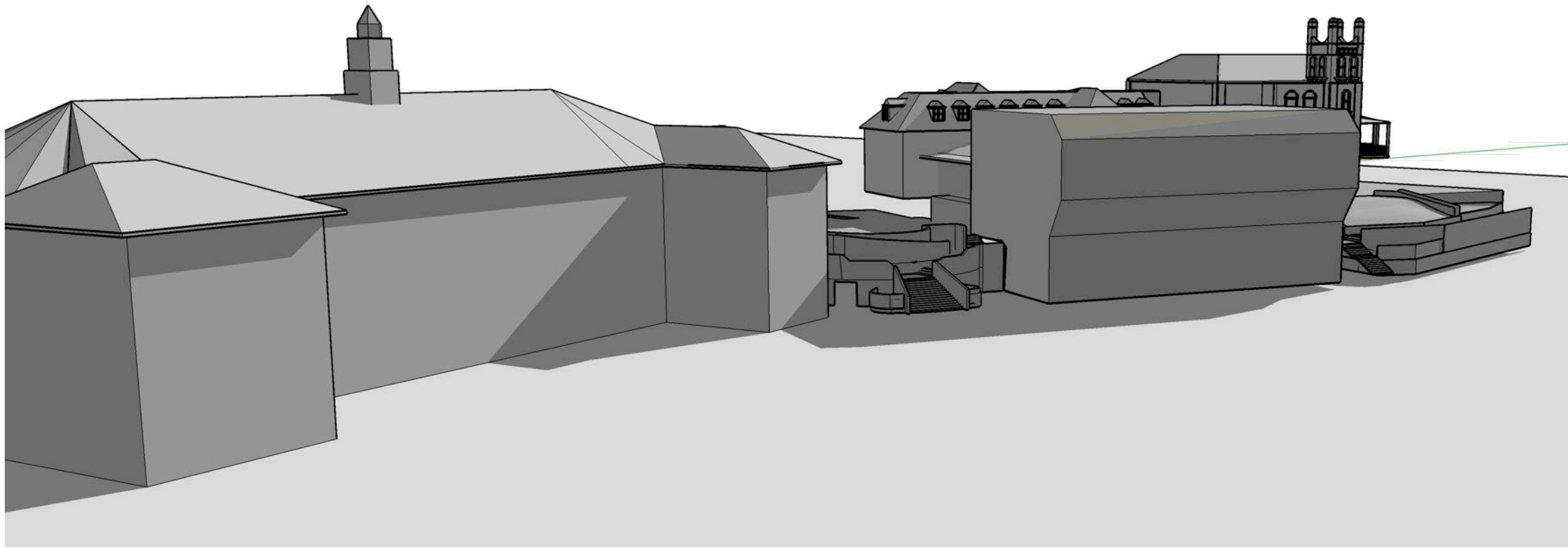
ISSUE
SEARS

REVISION
S1

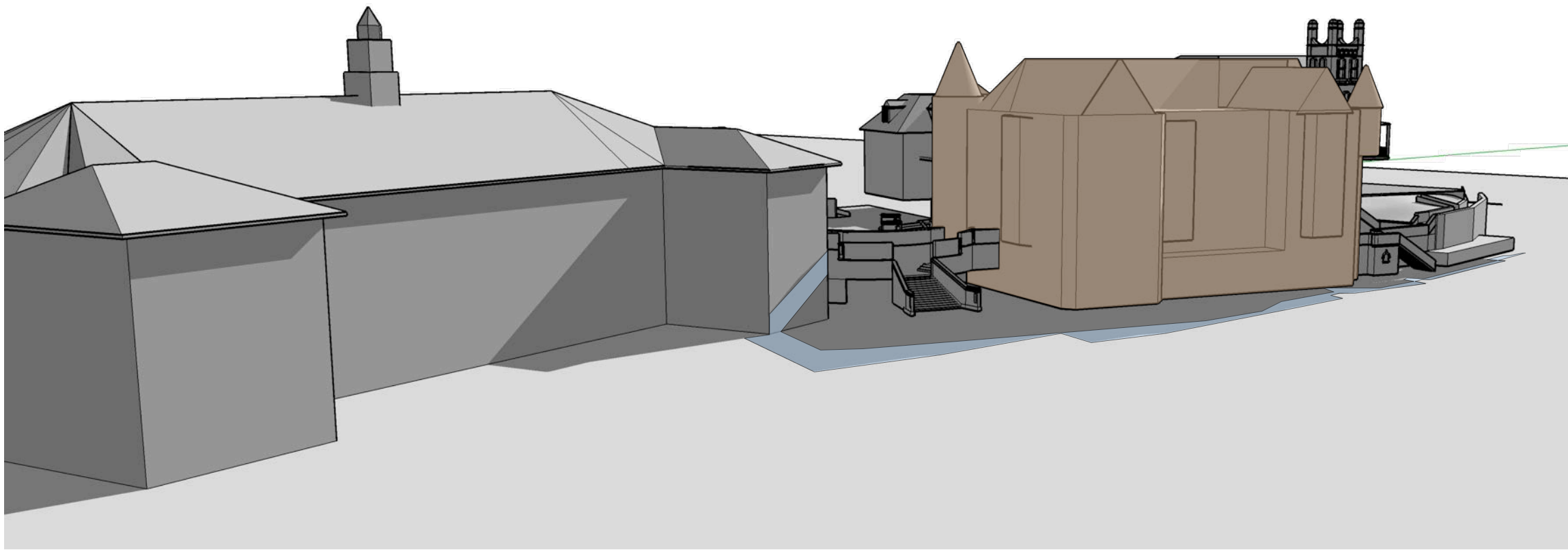
DATE
JUNE 2018

DRAWING NUMBER

SSD1.02/17-421



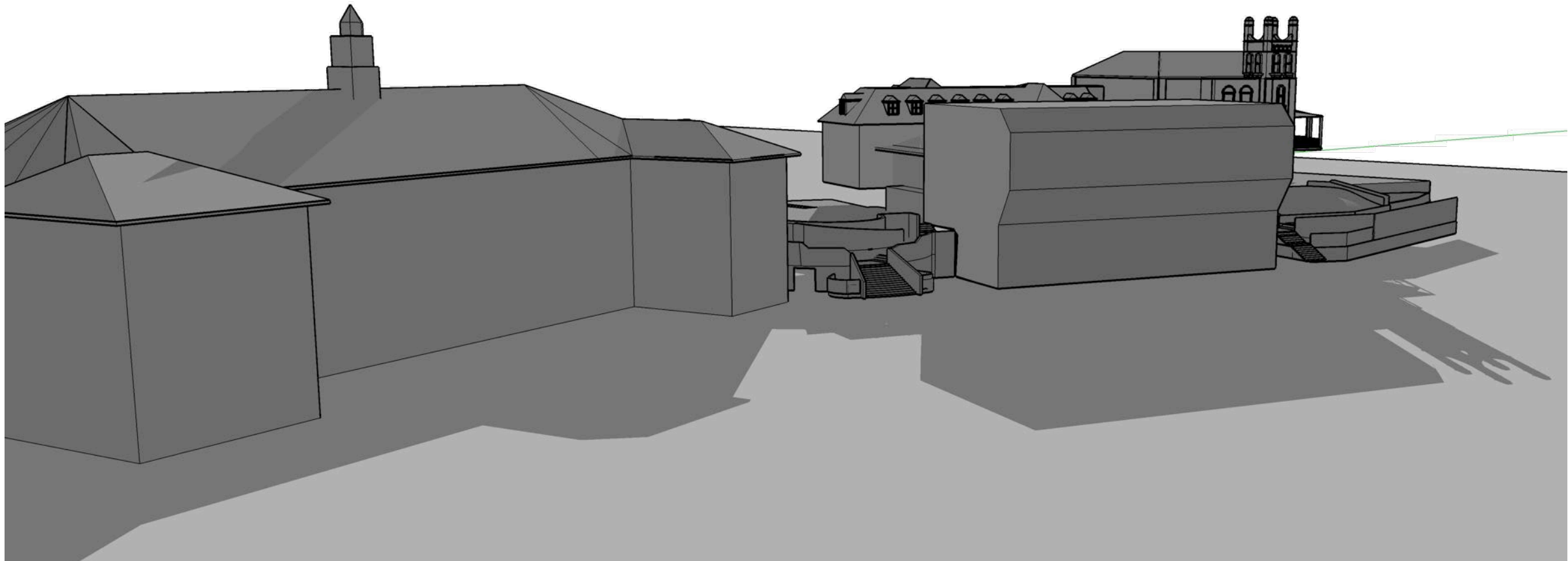
1 Existing 12PM
June 22



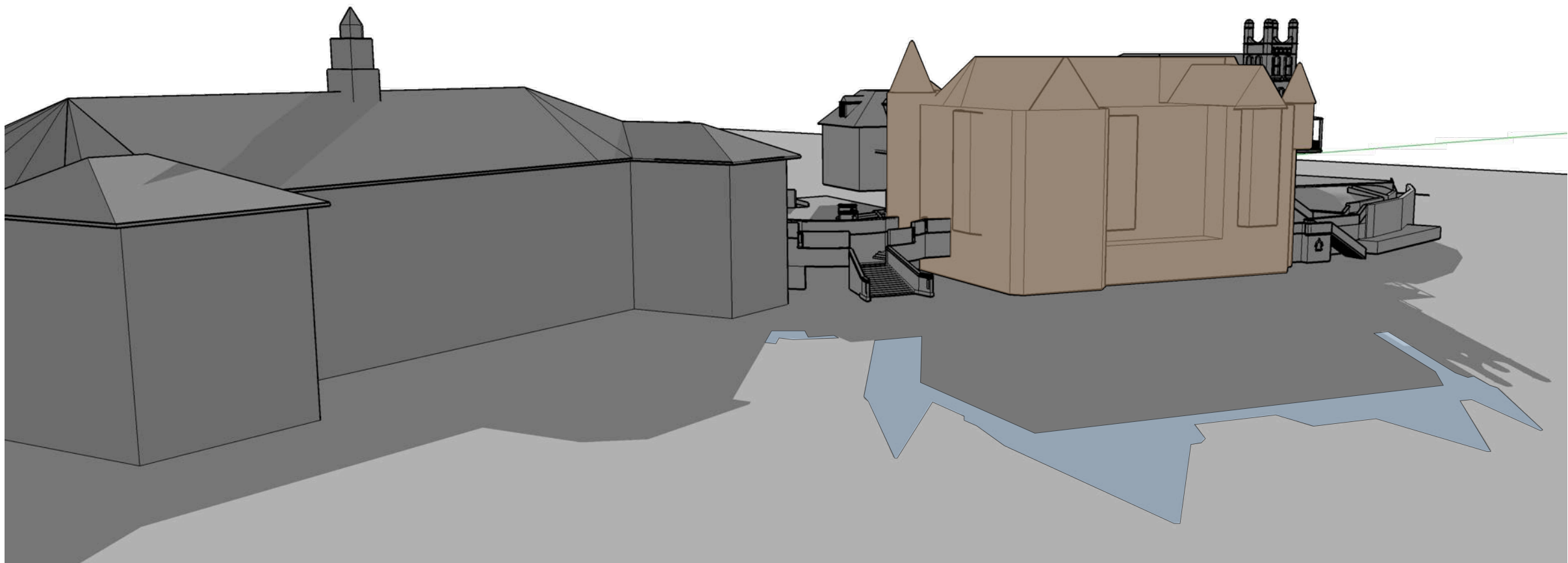
2 Proposed 12PM
June 22

LEGEND:

- New building
- Exg Shadow
- New shadow



1 Existing 3PM
June 22



2 Proposed 3PM
June 22

LEGEND:

- New building
- Exg Shadow
- New shadow

jca architects
 Education / Conservation / Residential
 PO Box 760 Broken Bay
 NSW 1580 Australia
 T 02 9227 6706
 E info@jca-architects.com.au
 W jca-architects.com.au
 JCA Architects Pty Ltd ABN 53 120 457 716
 Registered Architect
 John Cocking NSW 1580 855 144

GENERAL NOTES

- Consult with ALL relevant authorities prior to commencing works
- DO NOT scale. All dimensions are nominal + should be confirmed on site prior to commencement
- Obtain setting out information from architect PRIOR to commencement
- Bring discrepancies to the immediate attention of the Architect
- If unsure of any aspect of the works seek instruction from the Architect before proceeding
- All drawings must be read in conjunction with the council consent, specification, schedules, site notes + instructions issued by the Architect
- This material / work is protected by Copyright

CONSULTANTS

TPSS
 Quantity Surveyors
 BPC
 Planning Consultant
 ACV
 Mechanical Engineer
 Code Performance
 Accessibility Consultant
 PSE
 Structural Engineer
 BCG
 BCA Consultant
 JCL
 Hydraulic Engineer
 Riley Mac
 Fire Consultant
 MCD
 Fire Engineer
 LIMEA
 Electrical Engineer
 BCG
 BCA Consultant
 Beveridge Williams
 Surveyors

CLIENT
 STEVEN ADAMS
 THE SCOTS COLLEGE
PROJECT
 MAJOR ALTERATIONS + ADDITIONS TO
 THE STEVENSON LIBRARY (SSD 8922)
ADDRESS
 29-53 Victoria Rd
 Bellevue Hill, NSW
DRAWING TITLE
 SHADOW DIAGRAMS
DRAWN BY
 JC, CF, JW, ZW
SCALE
 NTS
ISSUE
 SEARS
REVISION
 S1
DATE
 JUNE 2018
DRAWING NUMBER
 SSD1.02/17-423