

---

**Subject:** FW: Orange Grove Solar - agencies comments on RTS  
**Attachments:** Orange Grove SF\_TransGrid connection satellite image.jpg; Orange Grove SF\_connection\_SE of 132kV looking N.png

**From:** Sten Fraser <sten.fraser@overlandsunfarming.com.au>  
**Sent:** Tuesday, 11 December 2018 5:45 PM  
**To:** Tatsiana Bandaruk <Tatsiana.Bandaruk@planning.nsw.gov.au>; Diana Mitchell <Diana.Mitchell@planning.nsw.gov.au>  
**Cc:** John Zammit <john.zammit@overlandsunfarming.com.au>; Brett Thomas <brett.thomas@overlandsunfarming.com.au>; Jason Gibson <jason.gibson@overlandsunfarming.com.au>  
**Subject:** Re: Orange Grove Solar - agencies comments on RTS

Hi Diana and Tatsiana,

Thanks for your time on the phone this afternoon.

To help you put the projects potential impact on PCT 281 (subject of OEH's letter to DPE dated 6 December 2018) into perspective, we provide two attachments and make the following points:

1. The area of potential impact to PCT 281 is not 2.4ha;
2. Project infrastructure being sited within PCT 281 will typically, subject to detailed design, comprise overhead transmission lines and supporting poles of which there will be approx. three (3);
3. From the attachments it will be noted the proposal is to site the transmission infrastructure within a treeless, heavily modified and degrading grassland area within the mapped PCT 281;
4. Assessment of potential impacts to PCT 281 undertaken in accordance with the BAM recorded a vegetation integrity score of 6.1, therefore well below the threshold for offsetting;
5. The poles supporting the transmission lines are expected to have a footprint of 1m sq. each, therefore the total footprint is not expected to exceed 10m sq. Also, refer to the 1<sup>st</sup> attachment and note the impact of the existing Tamworth to Gunnedah 132kV transmission line poles as marked;
6. Aside from the grass cover, there is no understorey and there is no requirement to clear any of the existing trees;
7. Access for construction will be via the project's proposed southern access road then along the existing TransGrid easement with moderately sized vehicles;
8. During operation, it is envisaged TransGrid (who will own the connection transmission line) will use their existing access route currently utilised to service the Tamworth to Gunnedah 132kV transmission line;
9. The area directly under the transmissions lines will continue to be grazed by the landowner, with this area measuring less than approx. 0.1ha.

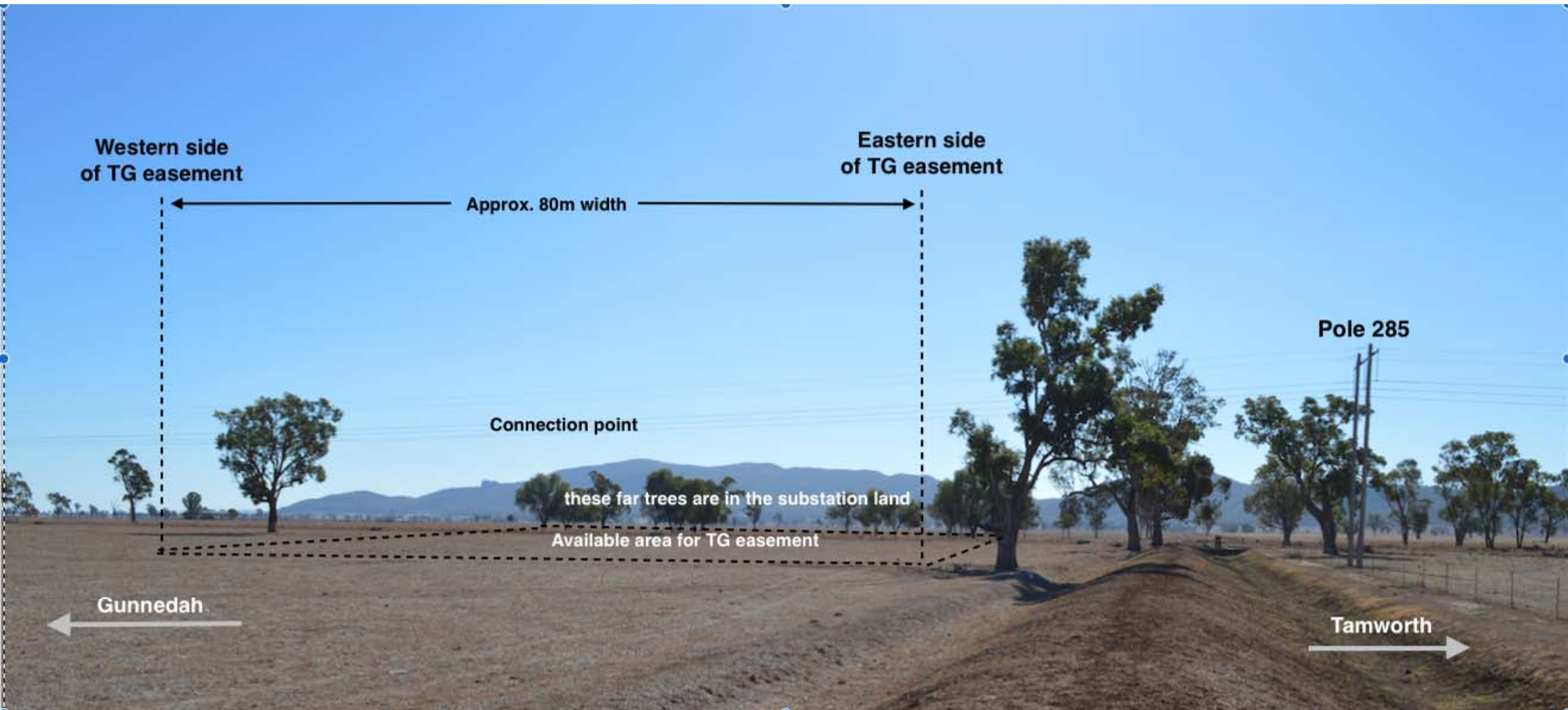
Please let me know if you require any further input, and to this end we can make ourselves available should you require our attendance in a phone call with OEH on this matter.

Finally, I would like to reiterate that if further clarity is required by either DPE or OEH on this or other matter, all communication must be direct with OVERLAND, namely myself in the first instance.

Thanks and regards

Sten

**Sten Fraser** | Senior Land & Development Manager | **OVERLAND Sun Farming**  
M +61 407 665 999 | P +61 3 9889 2023  
Level 3, 349 Coronation Drive, Milton, Qld, 4064  
[www.overlandsunfarming.com.au](http://www.overlandsunfarming.com.au)



**Orange Grove Sun Farm**

The connection Transmission Line (TL) from the project substation to the existing TransGrid 132kV TL will be sited within a narrow corridor within the light yellow shaded area that is part of PCT 281.

NB: Along the 132kV power line the impact of pole footings can be seen.



**Legend**

- 132kV
- Project infrastructure areas

TransGrid project Substation

Orange Grove Rd

OGSF south access road

Connection TL within this area

to Gunnedah

Existing TL poles + shadow

TransGrid easement (resumption A243258)

Photo point

132kV Transmission Line