



Planning &
Environment

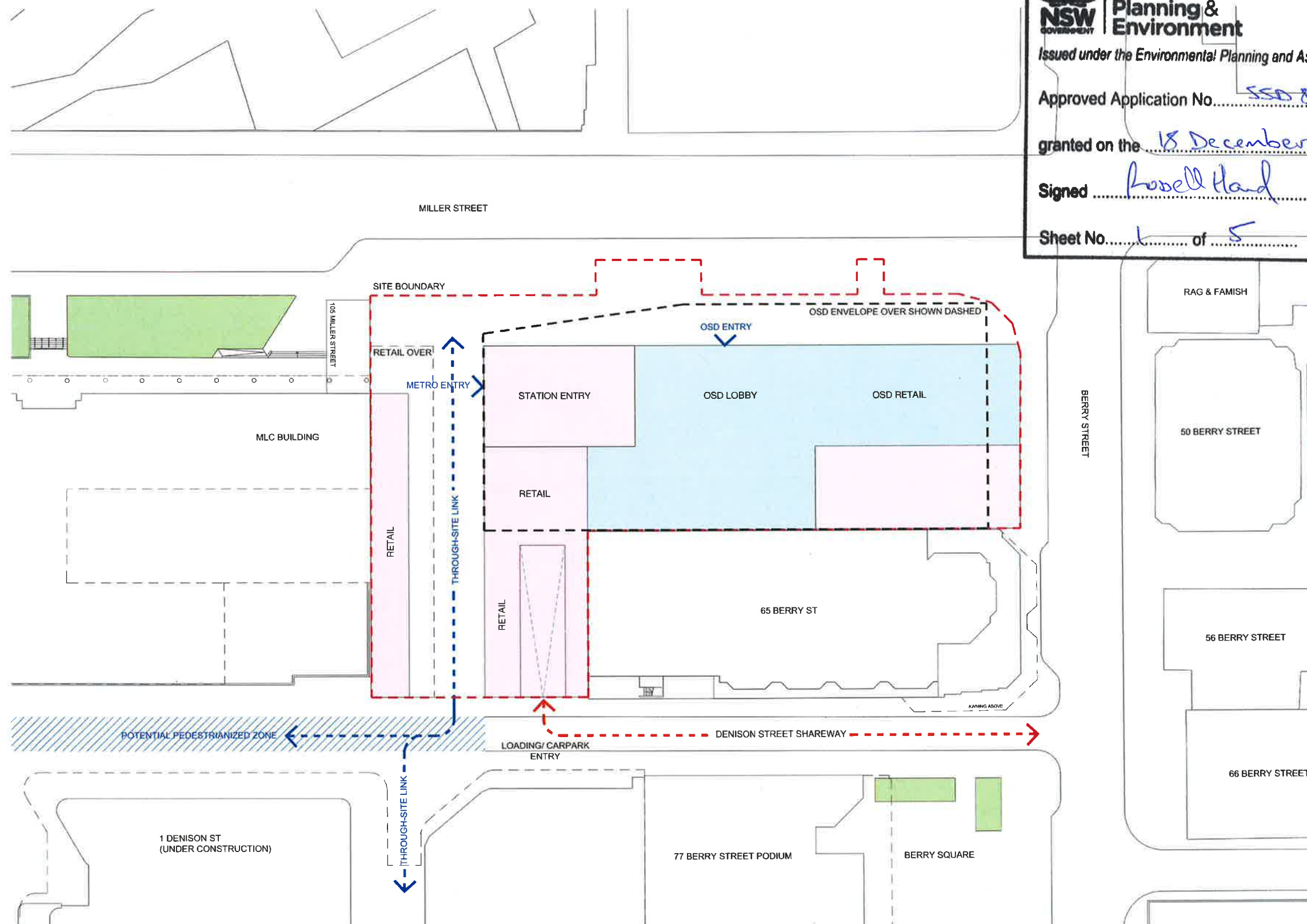
Issued under the Environmental Planning and Assessment Act 1979

Approved Application No. SSD 8874

granted on the 18 December 2018

Signed Russell Hand

Sheet No. 1 of 5



- KEY:
- VICTORIA CROSS STATION CSSI APPROVAL - INCLUDES STRUCTURE AND BUILDING INFRASTRUCTURE AND SPACE FOR LIFT CORES, ACCESS, PARKING, RETAIL AND BUILDING SERVICES FOR THE FUTURE OSD
 - OSD CONCEPT SSDA BUILDING ENVELOPE APPROXIMATE OSD LOBBY LOCATION - INCLUDES RETAIL, CORE AND PLANT
 - PEDESTRIANISED ZONE
 - APPROXIMATE LOCATION OF TOWER ENVELOPE OVER
 - PEDESTRIAN MOVEMENT
 - VEHICULAR MOVEMENT

Check all dimensions and site conditions prior to commencement of any work, the purchase or ordering of any materials, fittings, plant, services or equipment and the preparation of shop drawings and or the fabrication of any components.

Do not scale drawings - refer to figured dimensions only. Any discrepancies shall immediately be referred to the architect for clarification.

All drawings may not be reproduced or distributed without prior permission from the architect.

Revision	Date	Description	Initial	Checked
3	08.06.18	ISSUE FOR SSDA	TG	TO
2	16.04.18	ISSUE FOR SSDA	TG	FJM
1	22.02.18	ISSUE FOR SSDA	GH	GH

TFNSW
Victoria Cross OSD
Building Envelope
Indicative Ground Floor
Plan



Scale	Not to scale	A0
Drawn	Author	Checked
Project no.	S12041	
Status	Project Status	
Plot Date	11/09/2018 5:34:25 PM	
Plot File		
Drawing no.	A01.001	
Revision	3	

Melbourne 1 Nicholson Street
Melbourne VIC 3000 Australia
T 03 8664 6200 F 03 8664 6300
email mel@batesmart.com.au
http://www.batesmart.com.au

Sydney 43 Brisbane Street
Surry Hills NSW 2010 Australia
T 02 8354 5100 F 02 8354 5199
email syd@batesmart.com.au
http://www.batesmart.com.au

Bates Smart Pty Ltd ABN 70 004 999 400

FOR INFORMATION

BATESSMART

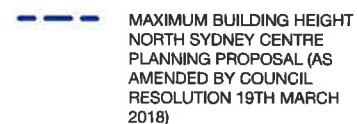


Approved Application No. SSD 8874

granted on the 18 December 2018

Signed Russell Hard

Sheet No. 2 of 5

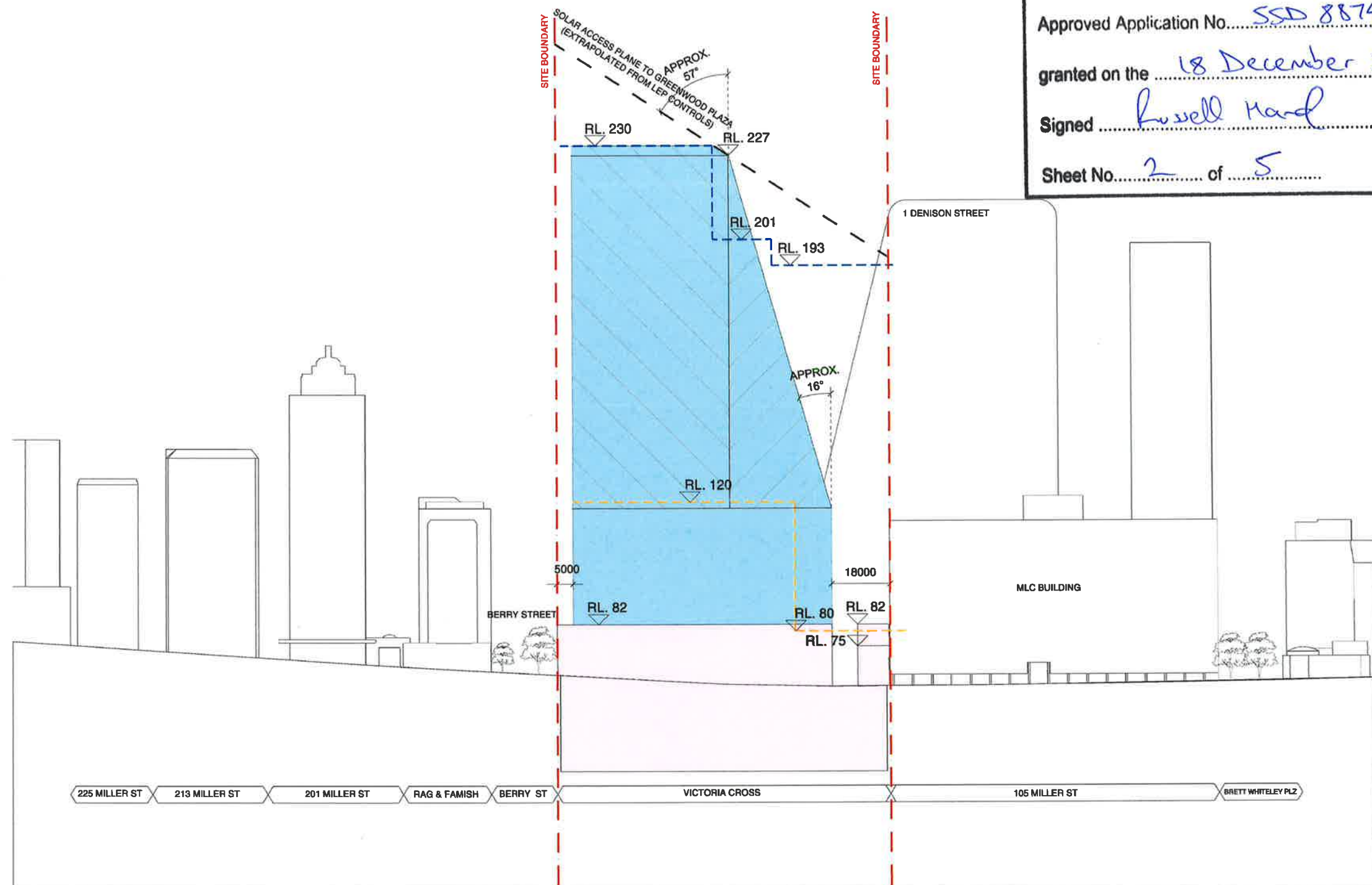


**VICTORIA CROSS STATION
CSSI APPROVAL - INCLUDES
STRUCTURE AND BUILDING
INFRASTRUCTURE AND
SPACE FOR LIFT CORES,
ACCESS, PARKING, RETAIL
AND BUILDING SERVICES
FOR THE FUTURE OSD**



ARTICULATION ZONE -
4.5M WIDE

CHAMFERED ARTICULATION ZONE -
4.5M - 0M WIDE



TFNSW Victoria Cross OSD

Building Envelope
Miller Street Elevation

Scale	Not to scale	A0	
Drawn	Author	Checked	Checked
Project no.	S12041		
Status	Project Status		
Plot Date	11/09/2018 5:34:36 PM		
Plot File			
Drawing no.	Revision		
A01.002	3		

Melbourne 1 Nicholson Street
Melbourne VIC 3000 Australia
T 03 8664 6200 F 03 8664 6300
email mel@batessmart.com.au
<http://www.batessmart.com.au>

Bates Smart Pty Ltd ABN 70 004 999 400

Sydney 43 Brisbane Street
Surry Hills NSW 2010 Australia
T 02 8354 5100 F 02 8354 5199
email syd@batessmart.com.au
<http://www.batessmart.com.au>

BATESSMART

\\Vamp\VCOSD_BS_ARCH_R2017_GOA.MI

Check all dimensions and site conditions prior to commencement of any work, the purchase or ordering of any materials, fittings, plant, services or equipment and the preparation of shop drawings and or the fabrication of any components.

Do not scale drawings - refer to figured dimensions only. Any discrepancies shall immediately be referred to the architect for clarification.

All drawings may not be reproduced or distributed without prior permission from the architect.



Planning & Environment

Issued under the Environmental Planning and Assessment Act 1979

Approved Application No. SSD 8874

granted on the 18 December 2018

Signed Russell Hand

Sheet No. 3 of 5

KEY:

--- MAXIMUM BUILDING HEIGHT
NORTH SYDNEY CENTRE
PLANNING PROPOSAL (AS
AMENDED BY COUNCIL
RESOLUTION 19TH MARCH
2018)

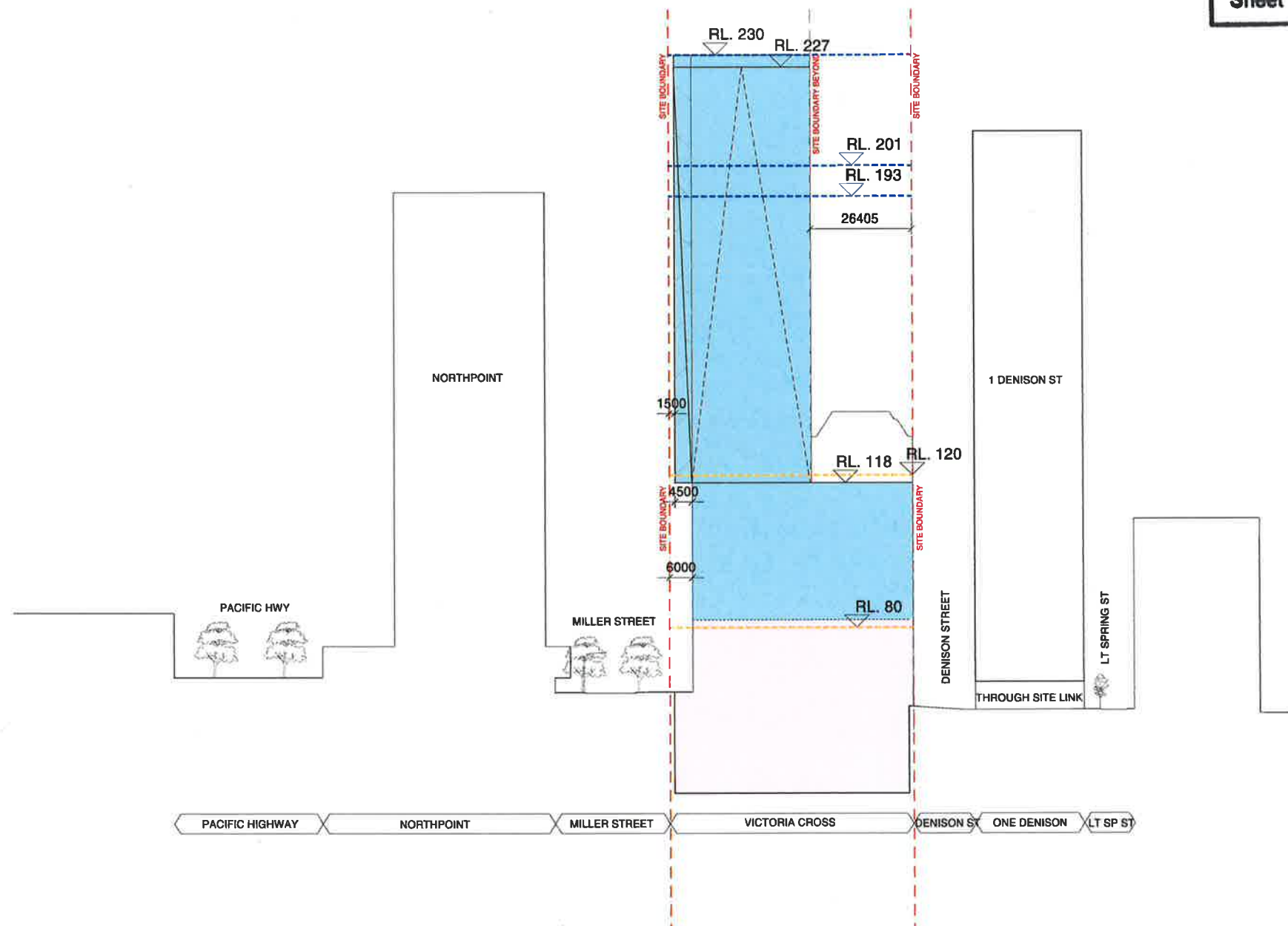
--- MAXIMUM BUILDING
HEIGHT NORTH SYDNEY
LEP 2013

VICTORIA CROSS STATION
CSSI APPROVAL - INCLUDES
STRUCTURE AND BUILDING
INFRASTRUCTURE AND
SPACE FOR LIFT CORES,
ACCESS, PARKING, RETAIL
AND BUILDING SERVICES
FOR THE FUTURE OSD

OSD CONCEPT SSDA
BUILDING ENVELOPE
INCLUDES OSD AREAS
INSIDE THE CSSI 'SHELL'
BELOW GROUND AND IN
THE PODIUM LEVELS

ARTICULATION ZONE -
4.5M WIDE

CHAMFERED ARTICULATION ZONE -
4.5M - 0M WIDE



FOR INFORMATION

Check all dimensions and site conditions prior to commencement of any work, the purchase or ordering of any materials, fittings, plant, services or equipment and the preparation of shop drawings and or the fabrication of any components.

Do not scale drawings - refer to figured dimensions only. Any discrepancies shall immediately be referred to the architect for clarification.

All drawings may not be reproduced or distributed without prior permission from the architect.

TFNSW
Victoria Cross OSD
Building Envelope
East West Section

Revision	Date	Description	Initial	Checked
3	08/08/18	ISSUE FOR SSDA	TG	TG
2	15/04/18	ISSUE FOR SSDA	TG	FJM
1	27/02/18	ISSUE FOR SSDA	GH	GH

Scale	Not to scale	AD
Drawn	Author	Checked
Project no.	S12041	
Status	Project Status	
Plot Date	11/09/2018 5:34:43 PM	
Plot File		
Drawing no.	A01.003	
Revision	3	

Melbourne 1 Nicholson Street
Melbourne VIC 3000 Australia
T 03 8664 6200 F 03 8664 6300
email mel@batesmart.com.au
http://www.batesmart.com.au

Sydney 43 Brisbane Street
Surry Hills NSW 2010 Australia
T 02 8354 5100 F 02 8354 5199
email syd@batesmart.com.au
http://www.batesmart.com.au

Bates Smart Pty Ltd ABN 70 004 999 400

BATESSMART



Planning & Environment

Issued under the Environmental Planning and Assessment Act 1979

Approved Application No. SSD 8874

granted on the 18 December 2018

Signed Russell Hand

Sheet No. 4 of 5

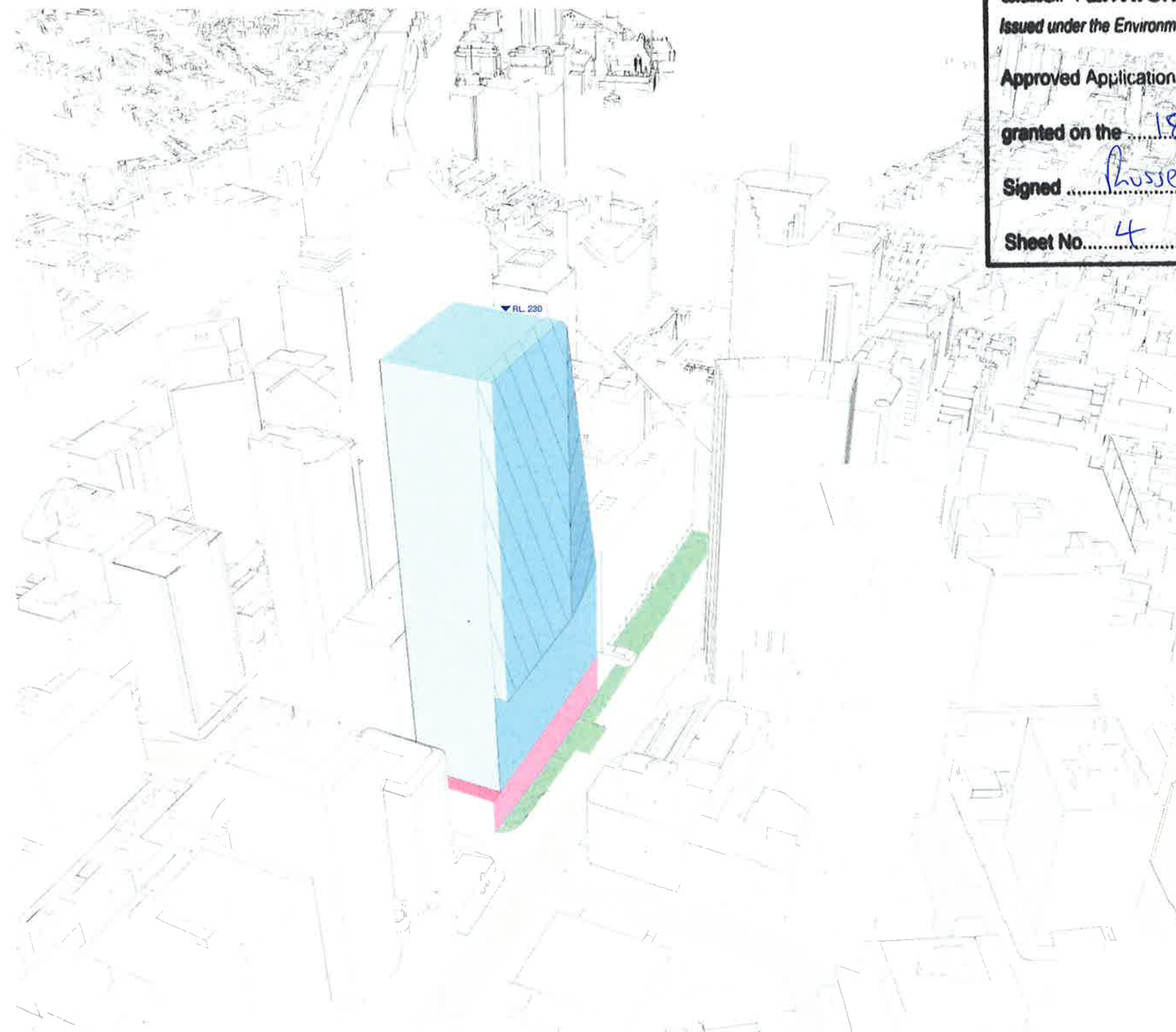
KEY:

 VICTORIA CROSS STATION
CSSI APPROVAL - INCLUDES
STRUCTURE AND BUILDING
INFRASTRUCTURE AND
SPACE FOR LIFT CORES,
ACCESS, PARKING, RETAIL
AND BUILDING SERVICES
FOR THE FUTURE OSD

 OSD CONCEPT SSDA
BUILDING ENVELOPE
INCLUDES OSD AREAS
INSIDE THE CSSI 'SHELL'
BELOW GROUND AND IN
THE PODIUM LEVELS

 ARTICULATION ZONE -
4.5M WIDE

 CHAMFERED ARTICULATION ZONE -
4.5M - 0M WIDE



FOR INFORMATION

01/01/2018 10:00 AM 100% 100% 100%

Check all dimensions and site conditions prior to commencement of any work, the purchase or ordering of any materials, fittings, plant, services or equipment and the preparation of shop drawings and or the fabrication of any components.

Do not scale drawings - refer to figured dimensions only. Any discrepancies shall immediately be referred to the architect for clarification.

All drawings may not be reproduced or distributed without prior permission from the architect.

TFNSW
Victoria Cross OSD

Building Envelope
North West Axonometric

Revision	Date	Description	Initial	Checked
3	08.08.18	ISSUE FOR SDA	TO	TO
2	16.04.18	ISSUE FOR SDA	TO	FJM
1	22.02.18	ISSUE FOR SDA	GH	GH

Scale	Not to scale	AD
Drawn	Author	Checked
Project no.	S12041	
Status	Project Status	
Plot Date	11/08/2018 5:34:45 PM	
Plot File		
Drawing no.	A01.004	
Revision	3	

Melbourne 1 Nicholson Street
Melbourne VIC 3000 Australia
T 03 8664 6200 F 03 8664 6300
email mel@batesmart.com.au
http://www.batesmart.com.au

Sydney 43 Brisbane Street
Surry Hills NSW 2010 Australia
T 02 8354 5100 F 02 8354 5199
email syd@batesmart.com.au
http://www.batesmart.com.au

Bates Smart Pty Ltd ABN 70 004 999 400

BATESSMART.



Planning &
Environment

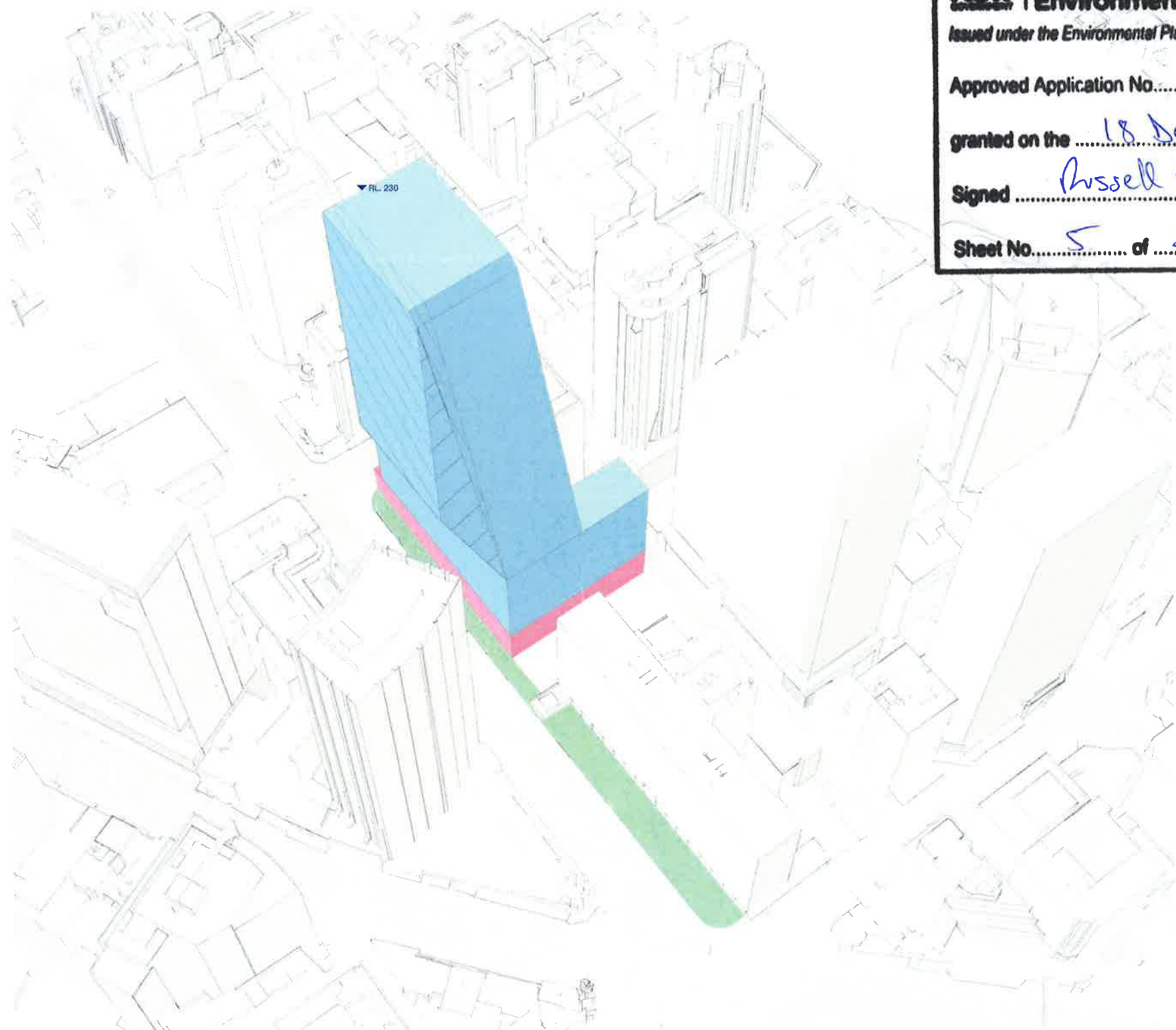
Issued under the Environmental Planning and Assessment Act 1979

Approved Application No. SSD 8874

granted on the 18 December 2018


Signed Russell Hand

Sheet No. 5 of 5



KEY:

 VICTORIA CROSS STATION
CSSI APPROVAL - INCLUDES
STRUCTURE AND BUILDING
INFRASTRUCTURE AND
SPACE FOR LIFT CORES,
ACCESS, PARKING, RETAIL
AND BUILDING SERVICES
FOR THE FUTURE OSD

 OSD CONCEPT SSDA
BUILDING ENVELOPE
INCLUDES OSD AREAS
INSIDE THE CSSI 'SHELL'
BELOW GROUND AND IN
THE PODIUM LEVELS

 ARTICULATION ZONE -
4.5M WIDE

 CHAMFERED ARTICULATION ZONE -
4.5M - 0M WIDE

FOR INFORMATION

© 2018 Bates Smart Pty Ltd. All rights reserved.

Check all dimensions and site conditions prior to commencement of any work, the purchase or ordering of any materials, fittings, plant, services or equipment and the preparation of shop drawings and or the fabrication of any components.

Do not scale drawings - refer to figured dimensions only. Any discrepancies shall immediately be referred to the architect for clarification.

All drawings may not be reproduced or distributed without prior permission from the architect.

TFNSW
Victoria Cross OSD

Building Envelope
South West
Axonometric

Revision	Date	Description	Initial	Checked
3	05.08.18	ISSUE FOR SSDA	TG	TG
2	10.04.18	ISSUE FOR SSDA	TG	FJM
1	22.02.18	ISSUE FOR SSDA	GH	GH

Scale	Not to scale	AD
Drawn	Author	Checked
Project no.	S12041	
Status	Project Status	
Plot Date	11/09/2018 5:34:47 PM	
Plot File		
Drawing no.	A01.005	Revision
		3

Melbourne 1 Nicholson Street
Melbourne VIC 3000 Australia
T 03 8664 6200 F 03 8664 6300
email mel@batesmart.com.au
http://www.batesmart.com.au

Sydney 43 Brisbane Street
Surry Hills NSW 2010 Australia
T 02 8354 5100 F 02 8354 5199
email syd@batesmart.com.au
http://www.batesmart.com.au

Bates Smart Pty Ltd ABN 70 004 999 400

BATESSMART.