

Appendix C

001 – Cranbrook Building Photographs



001 – Cranbrook Building Photos



Photograph 01: 001 Cranbrook Building



Photograph 04: North entry 2.1 - Putty between sandstone blocks



Photograph 02: External perimeter - Green paint to doors and window shutters



Photograph 05: Presumed asbestos cement infill panels



Photograph 03: External perimeter - Cream paint to walls and windows



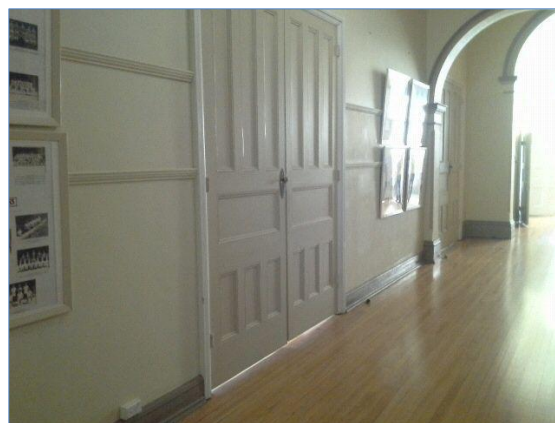
Photograph 06: North elevation - Presumed asbestos cement eave lining

Asbestos Containing Material
Synthetic Mineral Fibre Material
Lead Based Paint System
Non-hazardous material

001 – Cranbrook Building Photos



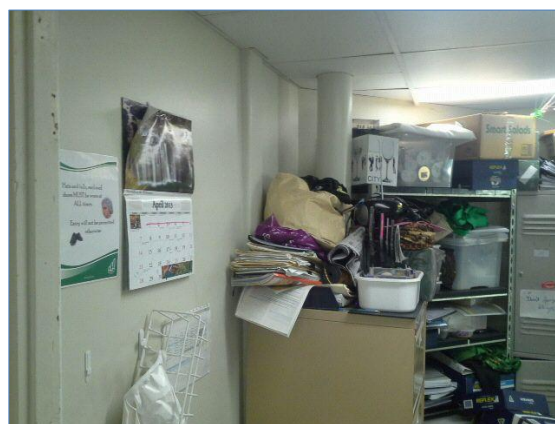
Photograph 07: West elevation - Asbestos cement eave lining



Photograph 10: Internal - Cream paint to walls, White lead paint to doors and frames, Grey paint to skirting boards



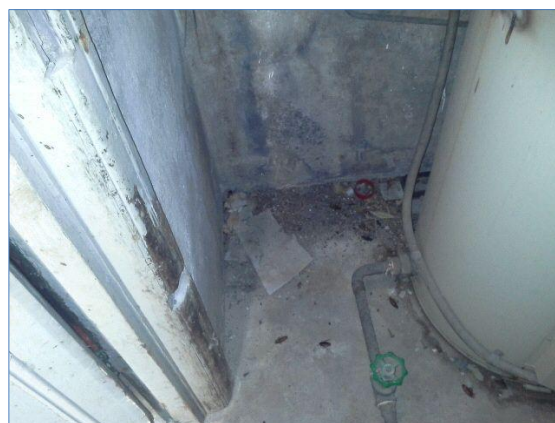
Photograph 08: Courtyard 2.39 - Asbestos cement ceiling lining to entrance to 2.41



Photograph 11: Room 2.42 - South and east Asbestos cement wall lining



Photograph 09: Courtyard 2.39 - Gas bottle store compressed fibre cement roof



Photograph 12: Hot water cupboard 2.28 - Fibre cement sheeting on ground surface North West corner

Asbestos Containing Material
Synthetic Mineral Fibre Material
Lead Based Paint System
Non-hazardous material

001 – Cranbrook Building Photos



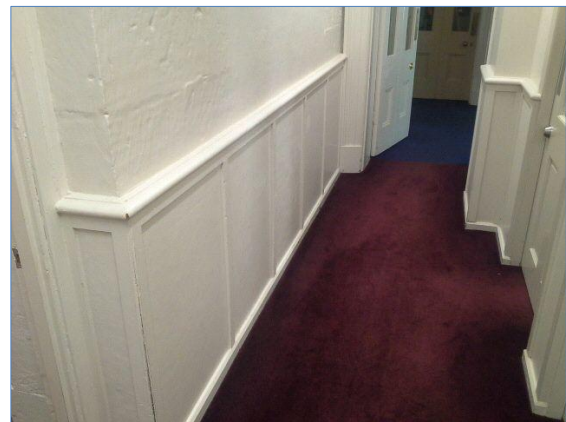
Photograph 13: Hot water cupboard 2.28 - SMF containing hot water units



Photograph 16: Administration 2.71 & 2.44 - SMF containing suspended ceiling tiles



Photograph 14: Male toilet 2.37 - Asbestos cement ceiling lining throughout



Photograph 17: Corridor 2.60 - Asbestos cement infill panels



Photograph 15: Female amenities 2.26 - Asbestos cement ceiling lining



Photograph 18: Basement - White paint throughout

Asbestos Containing Material
Synthetic Mineral Fibre Material
Lead Based Paint System
Non-hazardous material

001 – Cranbrook Building Photos



Photograph 19: Balcony 3.1 - Presumed asbestos cement infill panels to north and east walls



Photograph 20: Upper level - SMF insulating batts throughout roof space



Photograph 21: Concourse 3.66 - Fibre cement ceiling lining



Photograph 22: Bathroom 3.65 - Fibre cement wall lining



Photograph 23: Bridge 3.54 - Fibre cement south and west wall lining/cladding

Asbestos Containing Material
Synthetic Mineral Fibre Material
Lead Based Paint System
Non-hazardous material

Appendix D

002 – Harvey House Photographs



002 – Harvey House Photographs



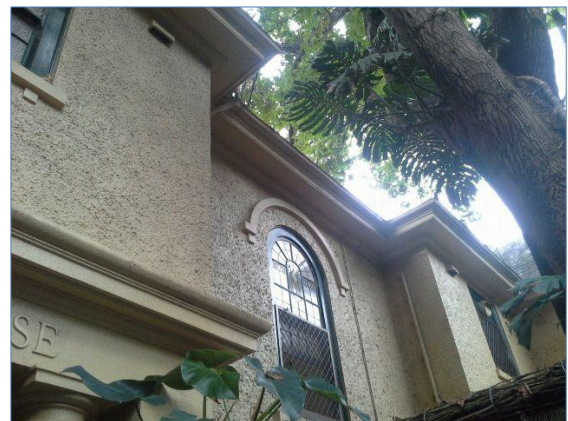
Photograph 01: 002 - Harvey House



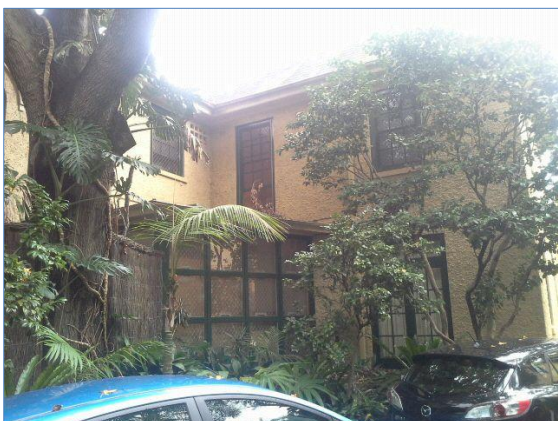
Photograph 04: External perimeter - Green lead based paint to doors, frames and windows



Photograph 02: Entrance awning - Fibre cement awning lining with white lead based paint



Photograph 05: External perimeter - Asbestos cement eave lining



Photograph 03: External perimeter - Cream lead based paint to walls



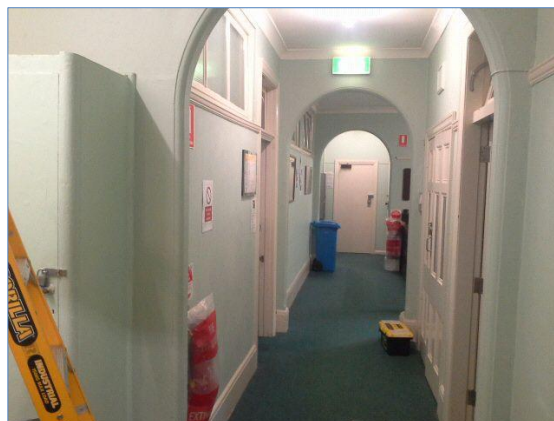
Photograph 06: North grounds - SMF containing hot water unit

Asbestos Containing Material
Synthetic Mineral Fibre Material
Lead Based Paint System
Non-hazardous material

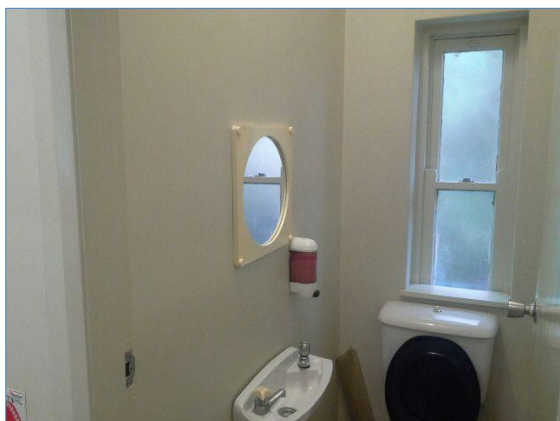
002 – Harvey House Photographs



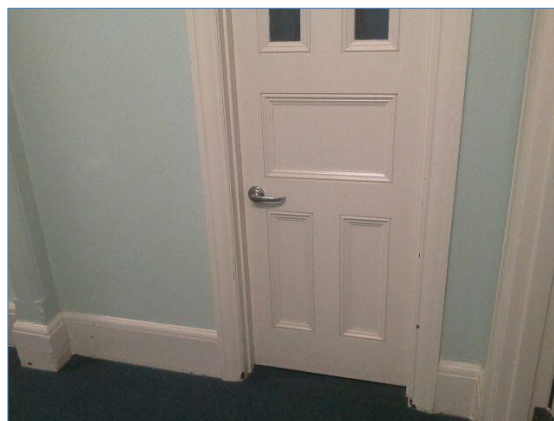
Photograph 07: Level 1 - Grey paint system to walls



Photograph 10: First floor corridor 2.10 - Grey paint to walls



Photograph 08: Level 01 Bathroom 2.3 - Asbestos cement east wall lining



Photograph 11: First floor - Cream paint to doors, frames, windows and skirting boards



Photograph 09: Level 01 bathroom 2.4 - Asbestos cement west wall lining



Photograph 12: First floor roof space - SMF containing hot water units

Asbestos Containing Material
Synthetic Mineral Fibre Material
Lead Based Paint System
Non-hazardous material



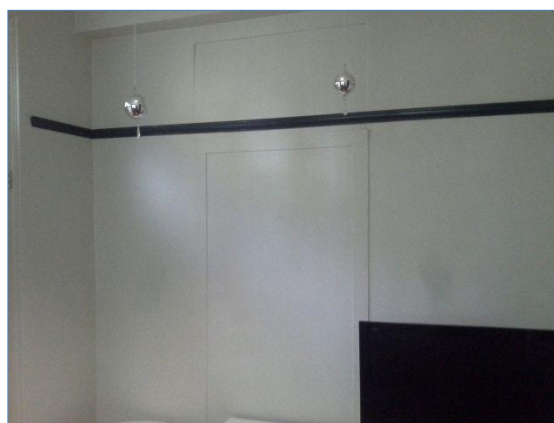
Photograph 13: First floor roof space - SMF insulating batts throughout and SMF insulated air handling ducts



Photograph 15: Ground floor enclosed veranda asbestos cement ceiling lining



Photograph 14: Ground floor sun room 1.12 - Fibre cement infill panes on either side of columns



Photograph 16: Ground floor room 1.17 - Fibre cement infill panels in location of old door

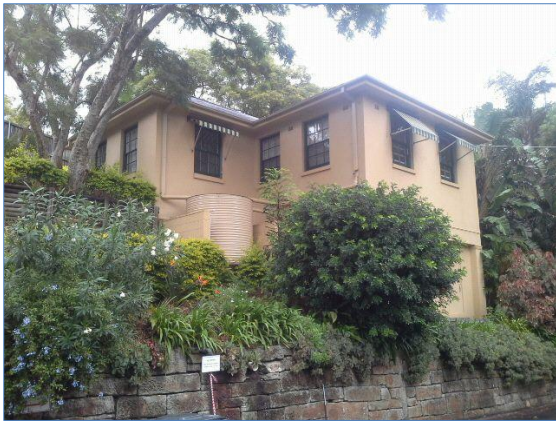
Asbestos Containing Material
Synthetic Mineral Fibre Material
Lead Based Paint System
Non-hazardous material

Appendix E

003 – Stacy Building Photographs



003 – Stacy House Photographs



Photograph 01: 003 Stacy Building



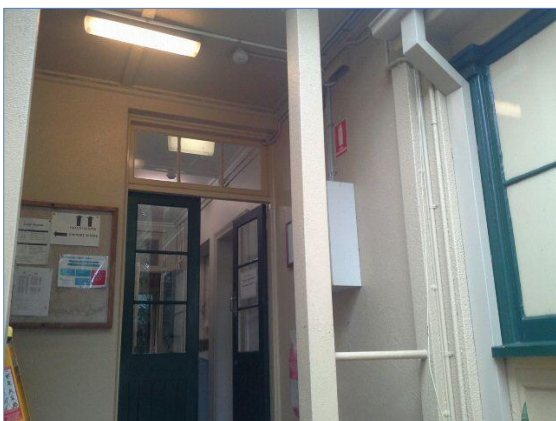
Photograph 04: Ground floor corridor 2.13 - Asbestos cement ceiling lining



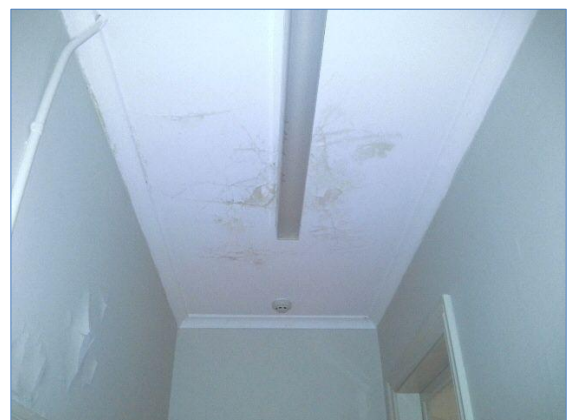
Photograph 02: External - Asbestos cement entrance awning lining and eave lining surrounding building



Photograph 05: Ground floor internal - Cream paint system to walls. Dark cream paint system to doors, frames, windows and skirting boards



Photograph 03: External perimeter - Cream paint system to walls, eaves and fascia
Green paint to doors and windows



Photograph 06: Ground floor - White paint to ceilings

Asbestos Containing Material
Synthetic Mineral Fibre Material
Lead Based Paint System
Non-hazardous material

003 – Stacy House Photographs



Photograph 07: Ceiling space - SMF insulating batts throughout roof space



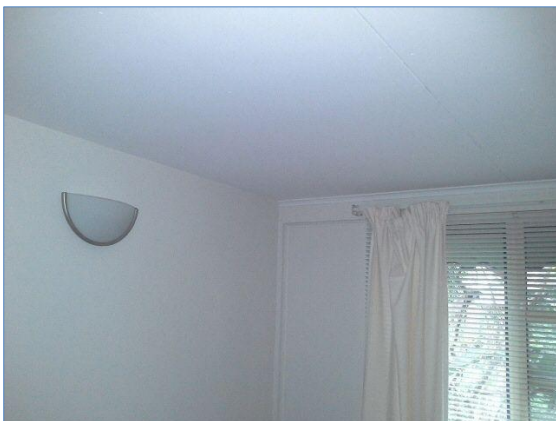
Photograph 10: Ground floor bathroom 2.3 - Asbestos cement infill surrounding fan



Photograph 08: Rooms 2.4 a & b - Fibre cement ceiling lining



Photograph 11: Front elevation of west wing - Asbestos cement infill panels below windows



Photograph 09: Rooms 2.2 a & b - Fibre cement ceiling lining and Asbestos cement infill panel either side of the windows



Photograph 12: Throughout - Window putty

Asbestos Containing Material
Synthetic Mineral Fibre Material
Lead Based Paint System
Non-hazardous material



Photograph 13: Basement store 1.2 - Fibre cement south wall lining

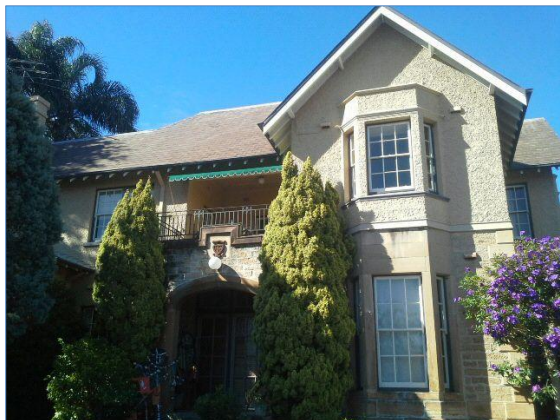
Asbestos Containing Material
Synthetic Mineral Fibre Material
Lead Based Paint System
Non-hazardous material

Appendix F

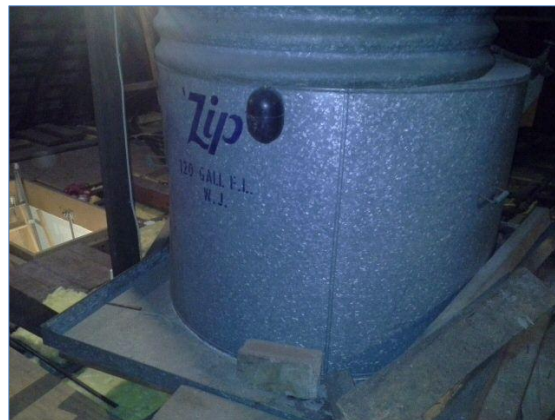
004 – Headmasters House Photographs



004 – Head Masters House Photographs



Photograph 01: 004 Headmasters house



Photograph 04: Roof space attic - Hot water tank - Asbestos Millboard insulation along with SMF insulation. Presumed asbestos insulation to electrical cables



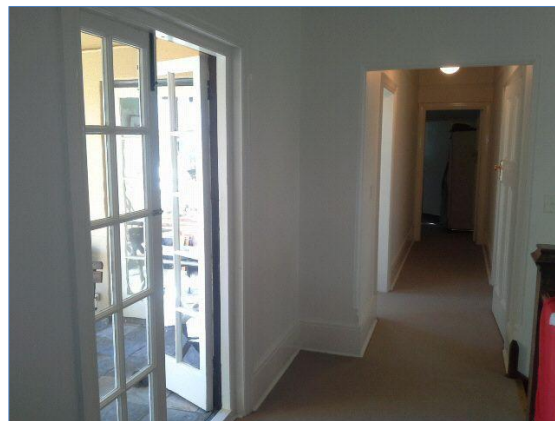
Photograph 02: Laundry 1.17 ceiling space - SMF insulating batts throughout roof space



Photograph 05: Roof space attic - hot water tank with asbestos Millboard and SMF insulation. Presumed asbestos insulation to cables



Photograph 03: Roof space attic- insulating batts throughout

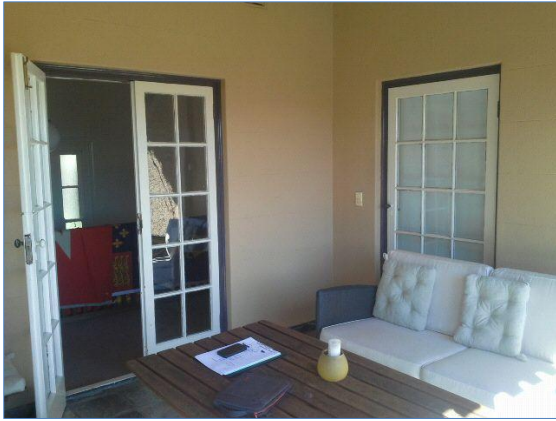


Photograph 06: Interior throughout - Off white paint to walls, White lead based paint to doors, windows, frames and skirting boards

Asbestos Containing Material
Synthetic Mineral Fibre Material

Lead Based Paint System
Non-hazardous material

004 – Head Masters House Photographs



Photograph 07 : External perimeter - Cream lead based paint to walls, White lead based paint to doors and windows, Purple lead based paint to door frames and window sills



Photograph 09: External store 1.13 - Internal east fibre cement infill panel



Photograph 08: External store 1.13 - Asbestos cement wall cladding

Asbestos Containing Material
Synthetic Mineral Fibre Material

Lead Based Paint System
Non-hazardous material

Appendix G

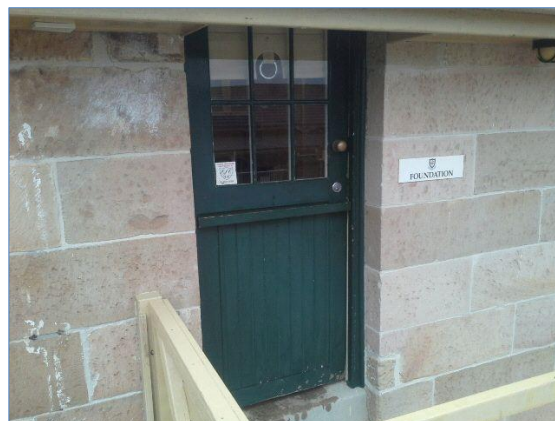
005 – Foundation Building Photographs



005 – Foundation Building Photographs



Photograph 01: Foundation Building 005



Photograph 04: Green paint to doors and frames



Photograph 02: Asbestos cement eave lining surrounding building



Photograph 05: Level 01 - White paint to doors, frames, windows and skirting boards



Photograph 03: Cream lead based paint to fascia, eaves and window frames



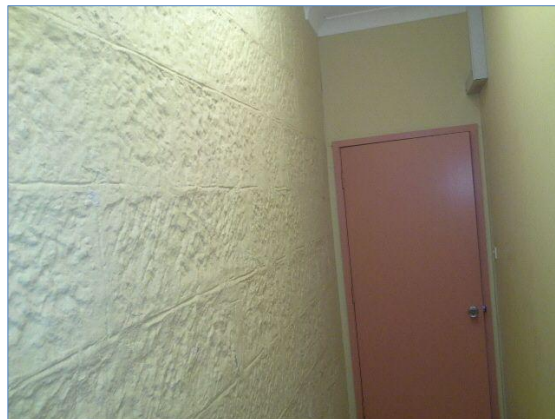
Photograph 06: Level 01 Foundation office 2.8, Ceiling space - SMF insulating batts throughout

Asbestos Containing Material
Synthetic Mineral Fibre Material
Lead Based Paint System
Non-hazardous material

005 – Foundation Building Photographs



Photograph 07: Level 1 meeting room 2.4, ceiling space - Lead contaminated dust throughout ceiling space



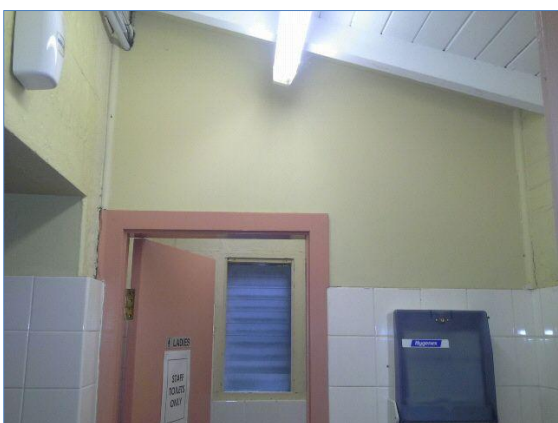
Photograph 10: Ground floor - Cream paint to walls, Pink paint to doors frames, windows and skirting boards



Photograph 08: Ground floor Uniform Shop 1.1, 1.2 white lead paint to walls



Photograph 11: Ground floor office 1.13, 1.14, 1.15 - SMF containing suspended ceiling tiles



Photograph 09: Ground toilets - Fibre cement partition wall lining

Asbestos Containing Material
Synthetic Mineral Fibre Material
Lead Based Paint System
Non-hazardous material

Appendix H

007 – James Roland Building Photographs



007 – James Roland Building Photographs



Photograph 01: 007 - James Rowland Building



Photograph 04: North grounds - Fibre cement service pit adjacent north wall east of ramp



Photograph 02: External - Green paint system to doors, handrail and awning supports



Photograph 05: South elevation - Vent infill panels to level 3 skylights

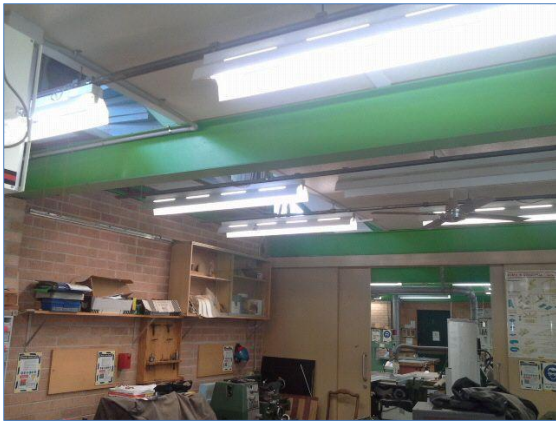


Photograph 03: External - Cream paint to walls throughout



Photograph 06: External perimeter - Brick wall expansion gap mastic

Asbestos Containing Material
 Synthetic Mineral Fibre Material
 Lead Based Paint System
 Non-hazardous material



Photograph 07: Level 03 - Green paint to ceiling metal I beams



Photograph 10: Rooms 3.2, 3.4, & 3.5 - Fibre cement infill panels above windows



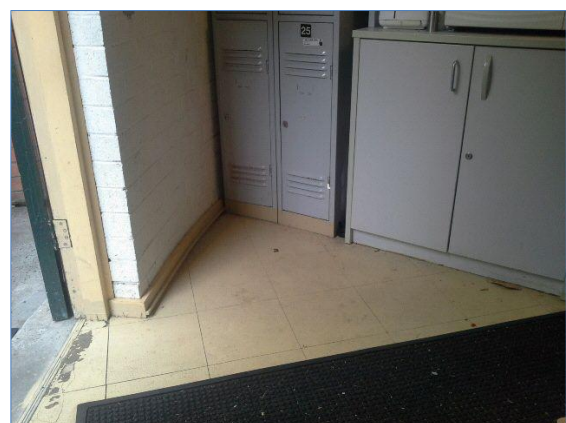
Photograph 08: Level 03 - Cream paint to concrete support beams



Photograph 11: Room 2.6 - Fibre cement infill panel in location of removed vent fan (south wall)

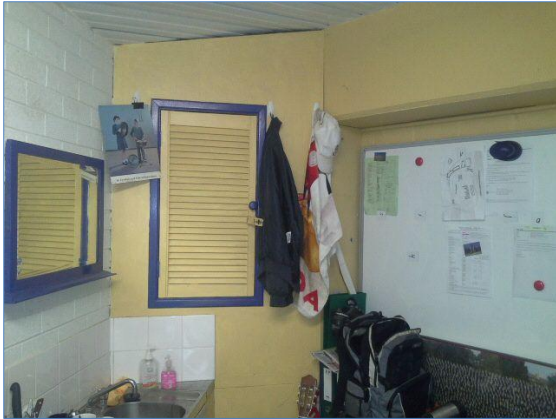


Photograph 09: Room 3.3 Store – Fibre cement north wall lining and infill panels behind flammable cupboard

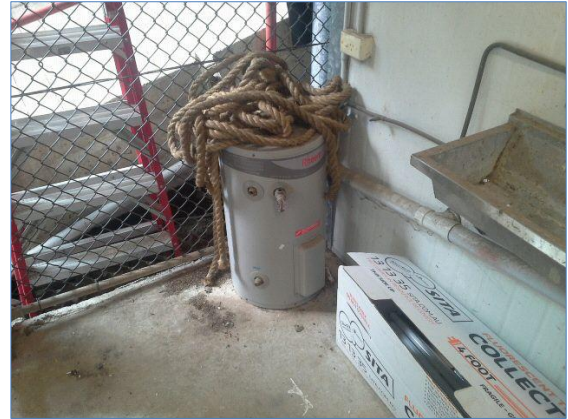


Photograph 12: Room 2.8 – Cream asbestos vinyl floor tiles throughout

Asbestos Containing Material
Synthetic Mineral Fibre Material
Lead Based Paint System
Non-hazardous material



Photograph 13: Room 2.8 - Fibre cement south wall lining surrounding cupboard



Photograph 15: Level 1 storage - SMF insulated redundant hot water unit at entrance



Photograph 14: Landing outside of room 2.8 - Fibre cement awning lining

Asbestos Containing Material
Synthetic Mineral Fibre Material
Lead Based Paint System
Non-hazardous material

Appendix I

008 – Furber Building Photographs



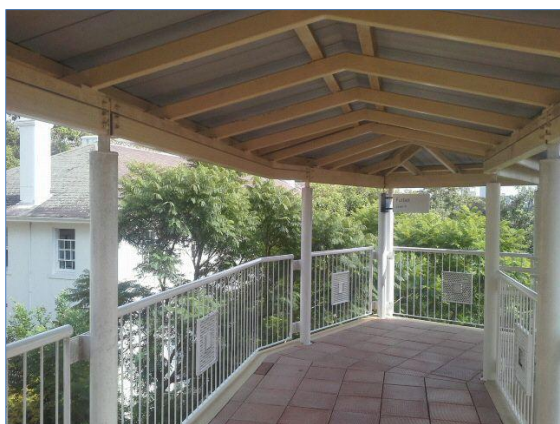
008 – Furber Building Photographs



Photograph 01: 008 Furber Building



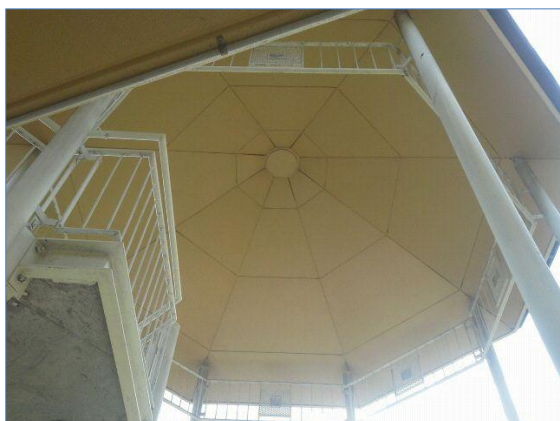
Photograph 04: External - Cream paint to walls



Photograph 02: Level 4 walkway - White lead paint to balustrades and support beams, Cream to awning supports



Photograph 05: Level 4 perimeter - Fibre cement eave lining



Photograph 03: Stair 1 and 2 - Stairwell fibre cement ceiling lining



Photograph 06: Level 4 ceiling space - SMF insulating batts throughout

Asbestos Containing Material
Synthetic Mineral Fibre Material
Lead Based Paint System
Non-hazardous material



Photograph 07: Level 03 Room 3.12 - Fibre cement infill panels above northern windows above suspended ceiling



Photograph 10: Level 03 walkway - Expansion gap mastic surrounding columns entering into brick lockers



Photograph 08: Level 03 Room 3.12 - SMF containing suspended ceiling tiles



Photograph 11: Level 03 Office of the headmaster wing - SMF insulating batts throughout roof space

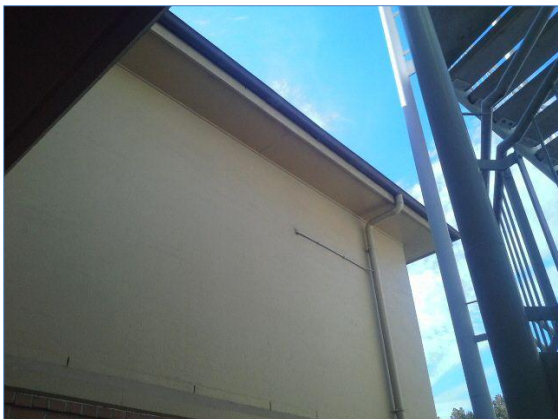


Photograph 09: Level 03 Room 3.11 - SMF containing rise hatch cover



Photograph 12: Level 03 Office of the head master wing- SMF insulation within air handling ducts within ceiling space

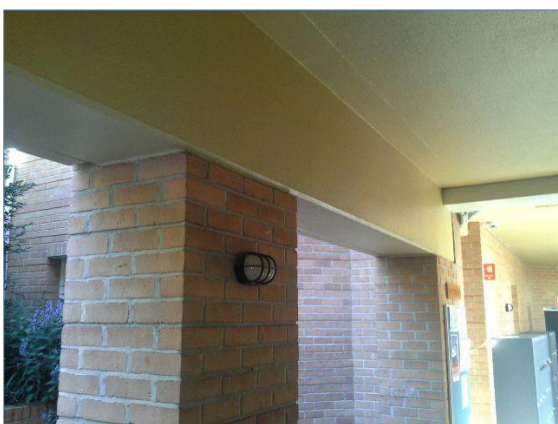
Asbestos Containing Material
 Synthetic Mineral Fibre Material
 Lead Based Paint System
 Non-hazardous material



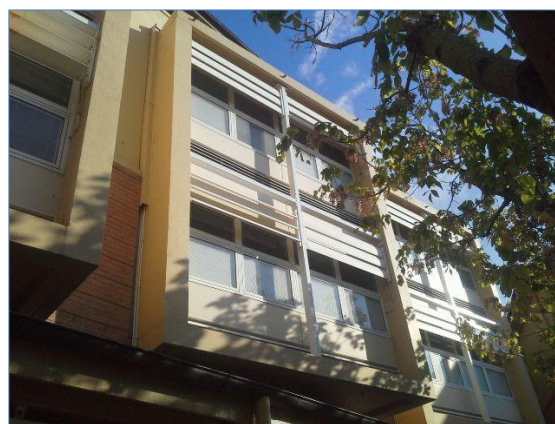
Photograph 13: Level 03 head master office wing external perimeter - Fibre cement eave lining



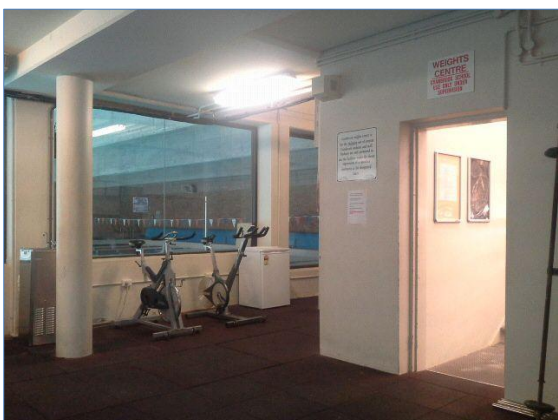
Photograph 16: Level 1 Art Store Room 1.2 - SMF insulation within hot water unit in south west corner of room



Photograph 14: Level 02 walk way - Expansion gap mastic between brick columns and concrete lintels



Photograph 16: External north elevation - Fibre cement infill panel above and below windows



Photograph 15: Level 01 Weights area - White paint system to walls, columns and ceilings

Asbestos Containing Material
Synthetic Mineral Fibre Material
Lead Based Paint System
Non-hazardous material

Appendix J

009 – Senior School Building Photographs



009 – Senior School Building Photographs



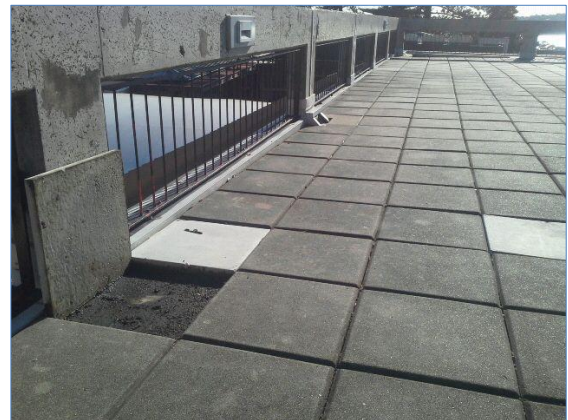
Photograph 01: 009 Senior School



Photograph 04: Level 5 east elevation – Fibre cement eave lining



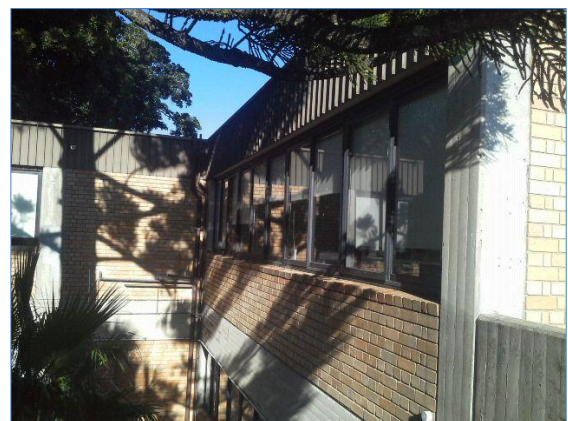
Photograph 02: Internal white paint to walls and columns



Photograph 05: Library terrace 5.11 - Presumed asbestos containing membrane below pavers



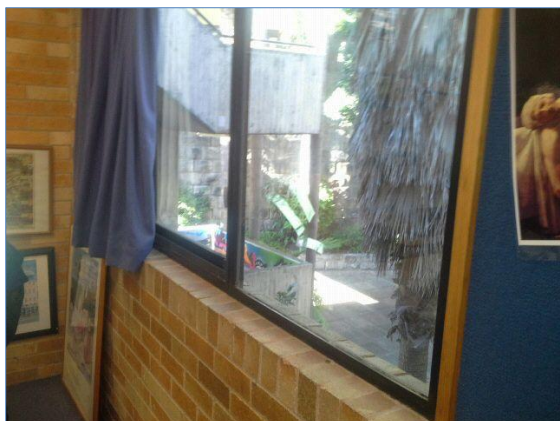
Photograph 03: Level 5 stairwell - Blue paint to door frames



Photograph 06: Level 5 external south elevation - Presumed asbestos cement eave lining

Asbestos Containing Material
Synthetic Mineral Fibre Material
Lead Based Paint System
Non-hazardous material

009 – Senior School Building Photographs



Photograph 07: Throughout Senior School Building - Asbestos window putty



Photograph 10: Room 4.13 - Asbestos cement south ceiling lining



Photograph 08: Corridor 4.26 - Fibre cement ceiling lining



Photograph 11: Rooms 4.6 & 4.7 - Asbestos infill panel extending partition wall to window



Photograph 09: Level 4 throughout - Black putty between window/door frame and concrete columns/soffit



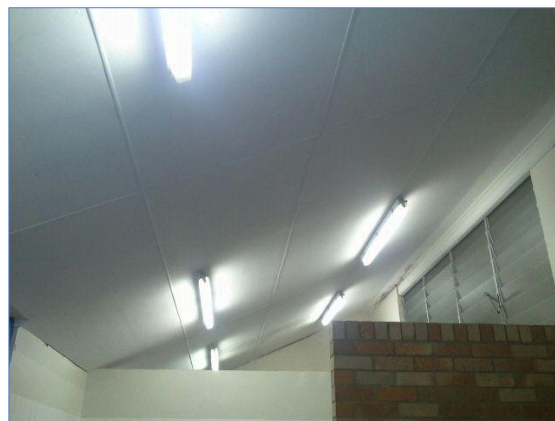
Photograph 12: Level 4 throughout - Brown expansion gap mastic between brickwork and concrete

Asbestos Containing Material
Synthetic Mineral Fibre Material
Lead Based Paint System
Non-hazardous material

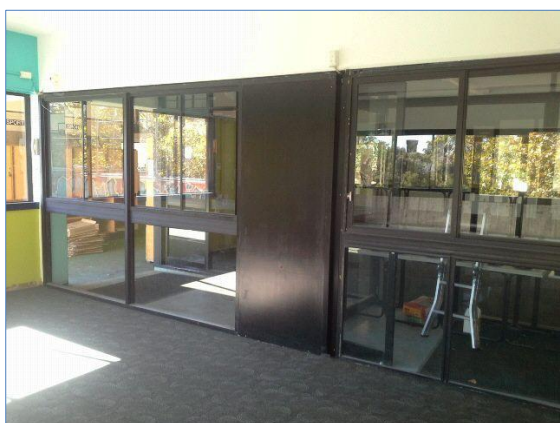
009 – Senior School Building Photographs



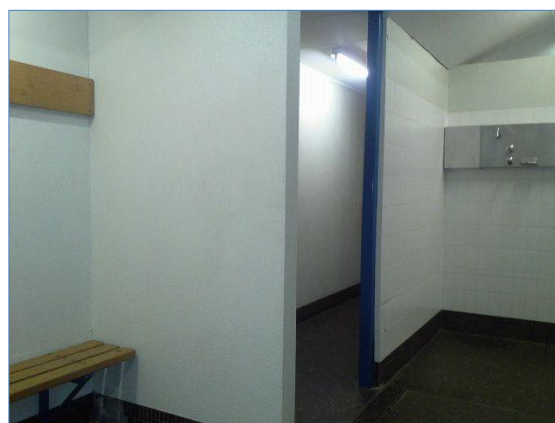
Photograph 13: Level 03 Terrace 3.21 - Fibre cement wall panelling



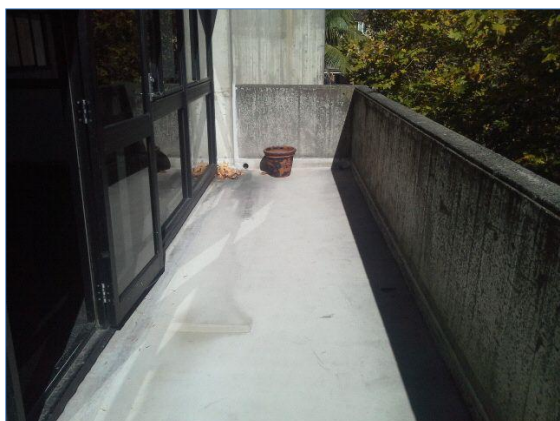
Photograph 16: Level 3 rooms west of gymnasium - Fibre cement ceiling lining



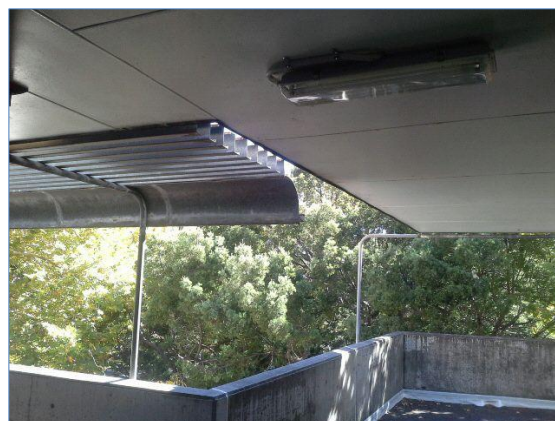
Photograph 14: Level 3 room 3.3 - Fibre cement infill panel



Photograph 17: Level 3 rooms 3.09, 3.10, 3.11, 3.27 compressed asbestos cement wall lining

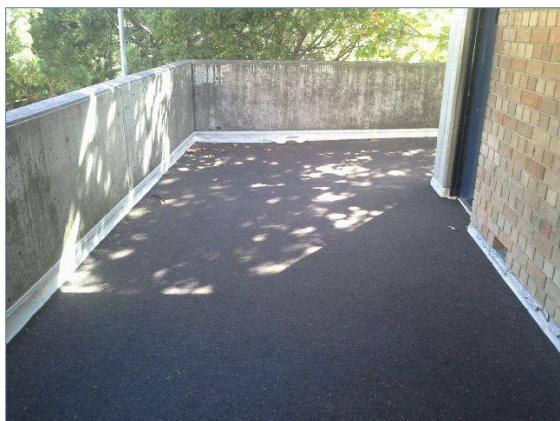


Photograph 15: Level 3 room 3.3 balcony - Waterproofing membrane



Photograph 18: Level 2 external corridor to Woodward terrace - Fibre cement awning lining

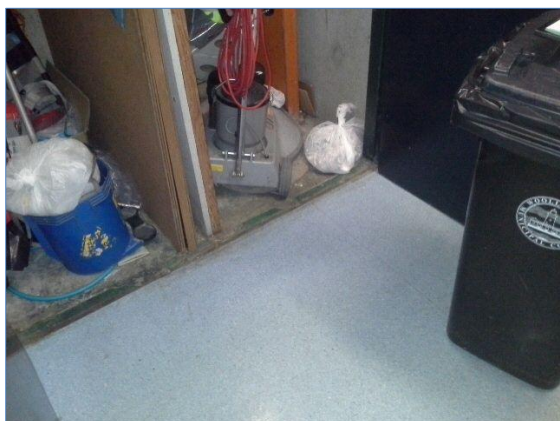
Asbestos Containing Material
Synthetic Mineral Fibre Material
Lead Based Paint System
Non-hazardous material



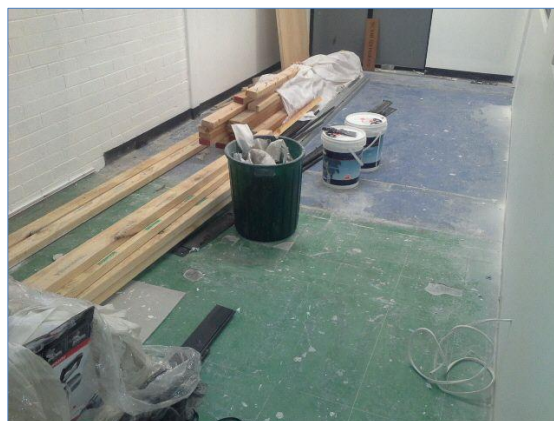
Photograph 19: Level 2 northern terraces - Waterproofing membrane



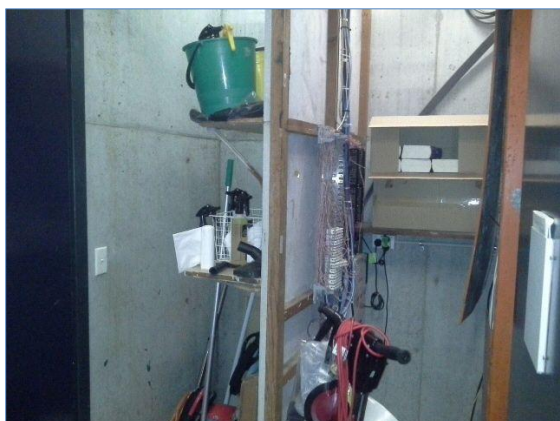
Photograph 22: Level 2 room 2.17 - Asbestos vinyl floor tiles



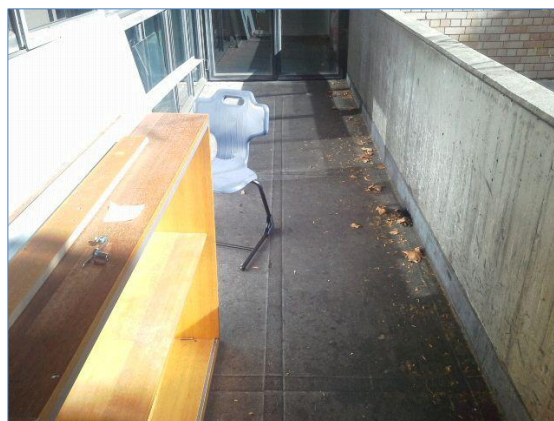
Photograph 20: Level 2 corridor 2.24 - Green asbestos vinyl floor tiles under vinyl



Photograph 23: Level 2 room 2.12 - Green asbestos vinyl floor tiles

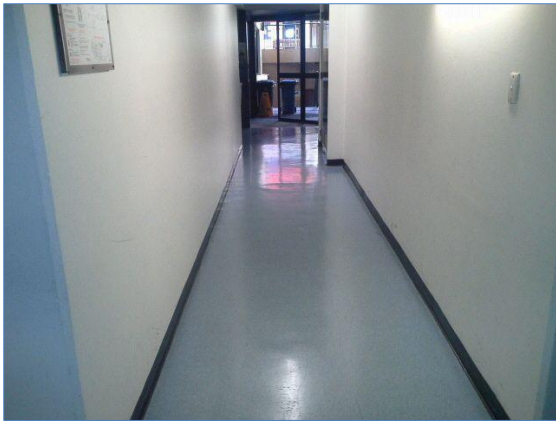


Photograph 21: Level 2 cupboard 2.20 - Compressed asbestos cement partition



Photograph 24: Level 1 balcony 1.26 - Asbestos containing bituminous membrane floor covering

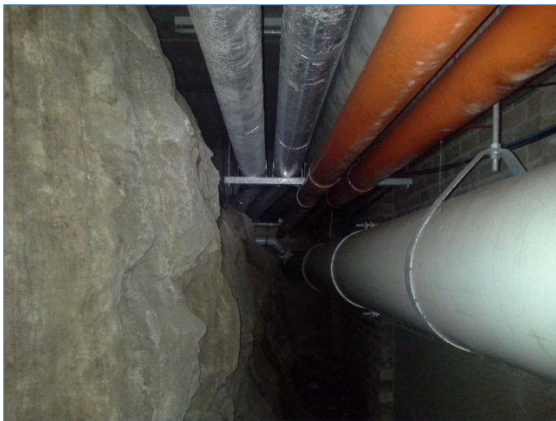
Asbestos Containing Material
Synthetic Mineral Fibre Material
Lead Based Paint System
Non-hazardous material



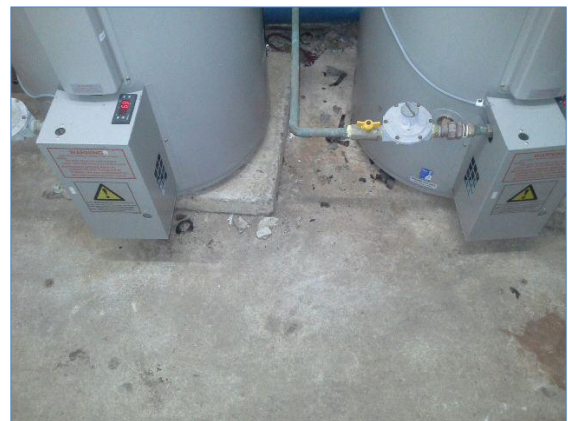
Photograph 25: Level 1 corridors throughout:
Blue asbestos vinyl tiles under vinyl sheeting



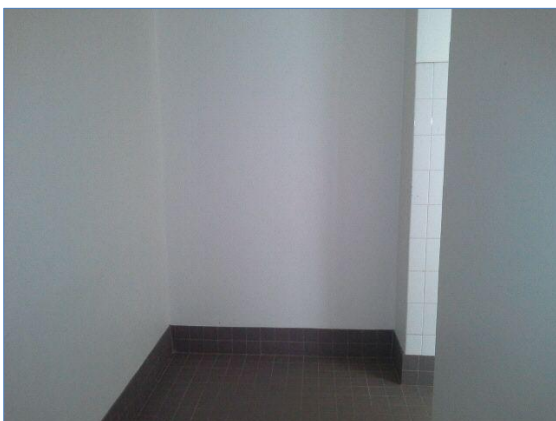
Photograph 28: Level 1 pool treatment room –
Asbestos containing bituminous electrical
cabinet door in North West corner



Photograph 26: Level 1 undercroft area 1.18 -
SMF insulation surrounding pipework



Photograph 29: Level 1 pool heating room 1.7
-Fibre cement debris on ground surface



Photograph 27: Level 1 Change room 1.23 -
Fibre cement west wall lining



Photograph 30: Level 1 pool heater room 1.7-
SMF insulation to hot water units and pipes

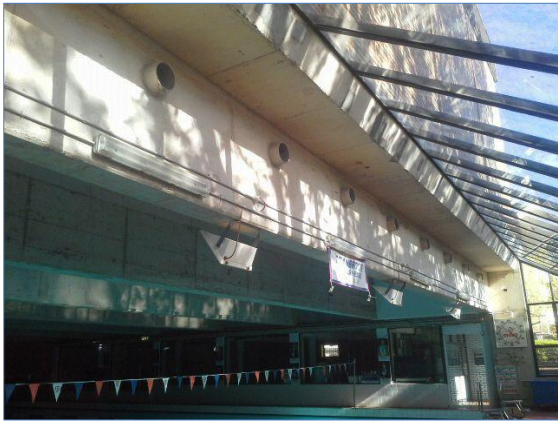
Asbestos Containing Material
Synthetic Mineral Fibre Material
Lead Based Paint System
Non-hazardous material



Photograph 31: Level 1 pool treatment room 1.8 - Flaking paint to walls



Photograph 33: Level 1 Swimming pool 1.31 - Asbestos cement form work to south concrete upper wall above wavy brick wall



Photograph 32: Swimming pool 1.31 - Asbestos cement conduits fixed within northern most bulkhead

Asbestos Containing Material
Synthetic Mineral Fibre Material
Lead Based Paint System
Non-hazardous material

Appendix K

010 – Bishop Building Photographs



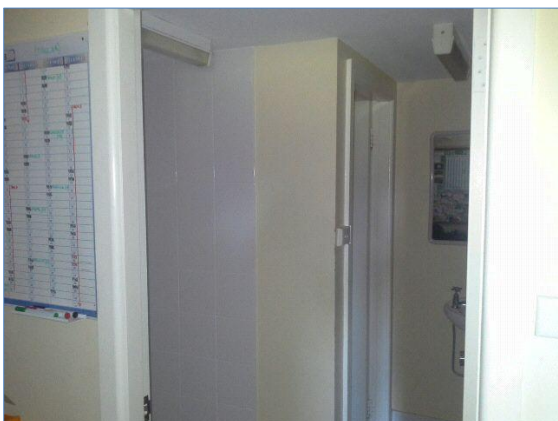
010 – Bishop Building Photographs



Photograph 01: 010 - Bishop Building



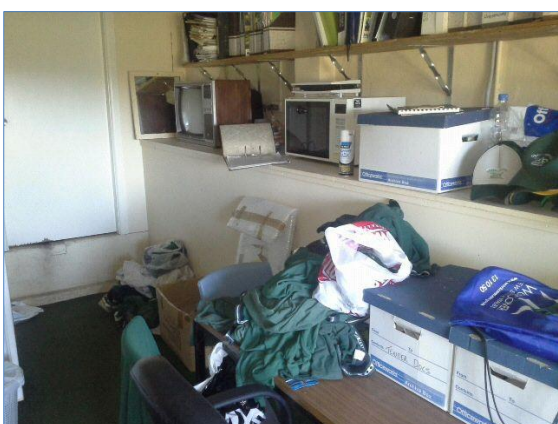
Photograph 04: Level 1 shower G1.11 - Asbestos cement ceiling lining



Photograph 02: Level 1 grounds office bath 1.16 - Fibre cement wall linings



Photograph 05: Level 1 Store MB1.7 - Asbestos pipe



Photograph 03: Level 1 Grounds office G1.15 - Fibre cement pipe work boxing lining along north wall



Photograph 06: Level 1 Store MB1.17 asbestos pipe

Asbestos Containing Material
 Synthetic Mineral Fibre Material
 Lead Based Paint System
 Non-hazardous material

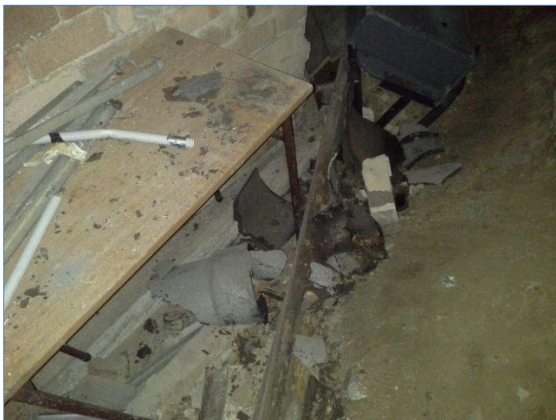
010 – Bishop Building Photographs



Photograph 07: Level 1 void west of Store MB1.7 - Broken asbestos pipe



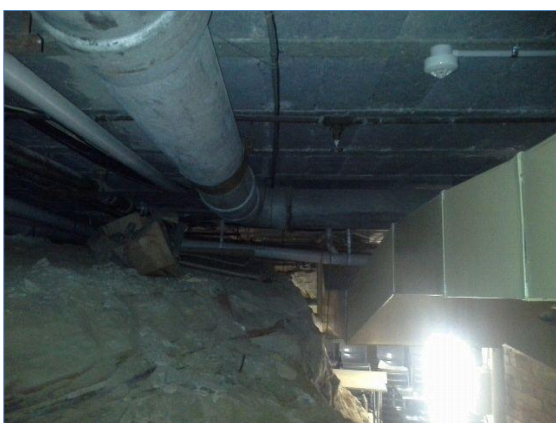
Photograph 10: Void south of store MB1.10 - Asbestos pipe



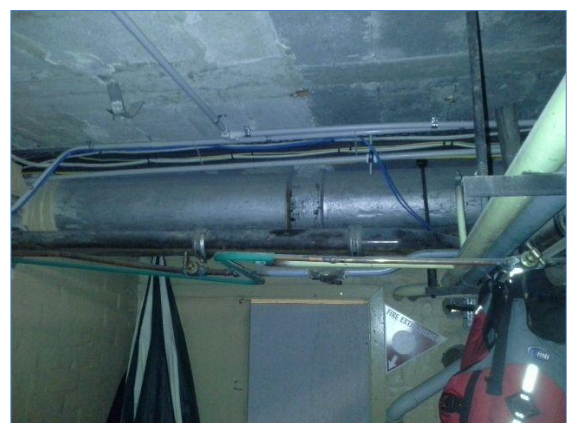
Photograph 08: Void west of Store MB1.7 - Broken asbestos pipe debris on ground surface



Photograph 11: Level 1 void South of store MB1.10 - Redundant pipe with asbestos rope insulation



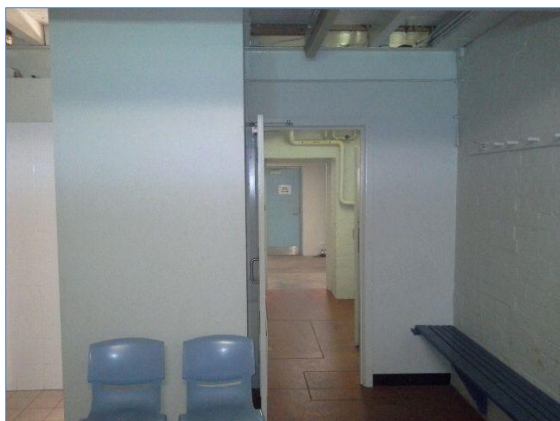
Photograph 09: Level 1 Void west of Store MB1.7 - Asbestos pipe



Photograph 12: Level 1 Store MB1.10 - Asbestos pipe

Asbestos Containing Material
Synthetic Mineral Fibre Material
Lead Based Paint System
Non-hazardous material

010 – Bishop Building Photographs



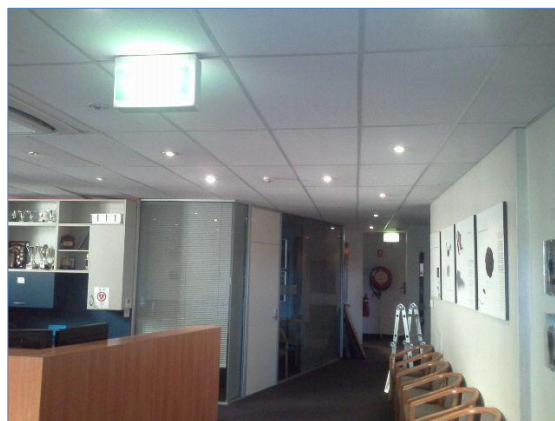
Photograph 13: Level 1 change room G1.15 and shower G1.16 - Fibre cement partition wall lining



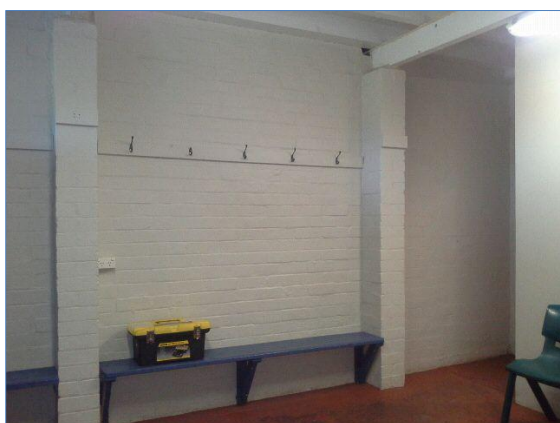
Photograph 16: Level 2 corridor - Vermiculite coating to soffit above suspended ceiling



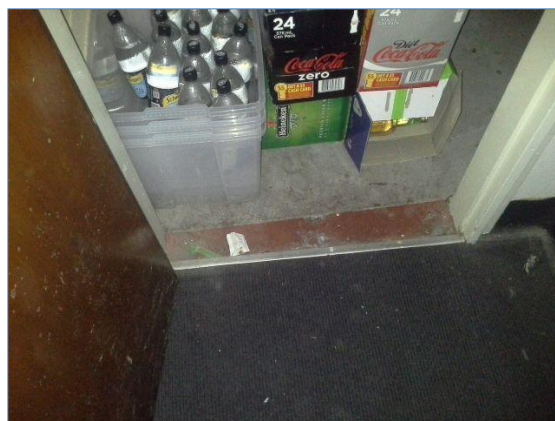
Photograph 14: Level 1 - White paint to timber ceilings and window and door frames



Photograph 17: Level 2 throughout - SMF suspended ceiling tiles



Photograph 15: Level 1 - Cream paint to walls



Photograph 18: Common room - Red vinyl floor tiles under carpet

Asbestos Containing Material
Synthetic Mineral Fibre Material
Lead Based Paint System
Non-hazardous material

010 – Bishop Building Photographs



Photograph 19: Stairwell entrance - Vermiculite coating to soffit



Photograph 21: Exterior - Window putty



Photograph 20: Exterior - Cream paint to walls, White paint to windows, and Green paint to doors

Asbestos Containing Material
Synthetic Mineral Fibre Material
Lead Based Paint System
Non-hazardous material

Appendix L

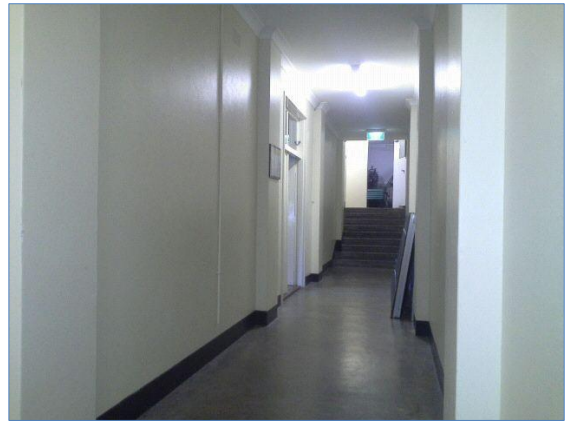
011 – War Memorial Hall Photographs



011 – War Memorial Hall Photographs



Photograph 01: 011 - War Memorial Hall



Photograph 04: Internal - Cream paint system to walls doors and frames.



Photograph 02: Basement under floor space - Vermiculite coating to ceiling



Photograph 05: Basement store 1.9 -- SMF insulation within hot water unit in north east corner



Photograph 03: Basement under floor space - Vermiculite debris throughout area



Photograph 06: Basement change room 1.10 - Compressed fibre cement vanity partition

Asbestos Containing Material
Synthetic Mineral Fibre Material
Lead Based Paint System
Non-hazardous material

011 – War Memorial Hall Photographs



Photograph 07: Ground level hall - Black paint system to walls



Photograph 10: West elevation - Fibre cement wall cladding



Photograph 08: Ground level external - White paint to doors and frames



Photograph 11: East wing roof - Presumed asbestos roofing membrane



Photograph 09: Ground floor External - Putty between metal window and door frames and glass pane.

Asbestos Containing Material
Synthetic Mineral Fibre Material
Lead Based Paint System
Non-hazardous material

Appendix M

012 – Mansfield Building Photographs



012 – Mansfield Building Photographs



Photograph 01: 012 - Mansfield Building



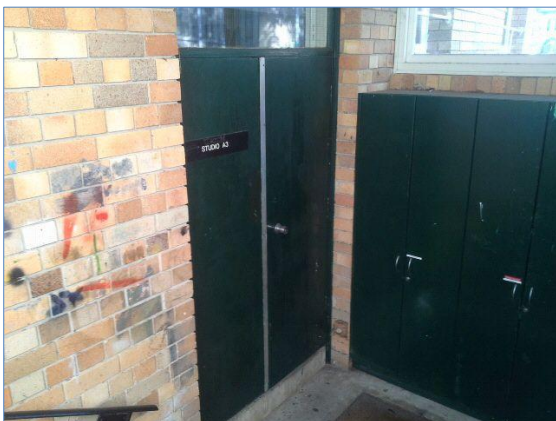
Photograph 04: External perimeter - Black paint to hand rails and balustrades



Photograph 02: External south elevation - Putty and white paint to windows



Photograph 05: Studio 3 - 2.5 - Grey vinyl floor tiles



Photograph 03: External perimeter - Green paint to doors and frames



Photograph 06: Studio 3 - 2.5 - SMF containing suspended ceiling tiles

Asbestos Containing Material
 Synthetic Mineral Fibre Material
 Lead Based Paint System
 Non-hazardous material

012 – Mansfield Building Photographs



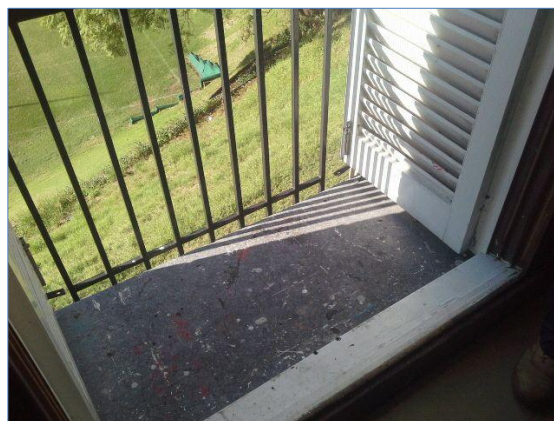
Photograph 07: Studio 3 - 2.5 - Compressed asbestos cement bench in south east corner of room



Photograph 10: Studio 2 - 2.4 - Fibre cement west wall lining



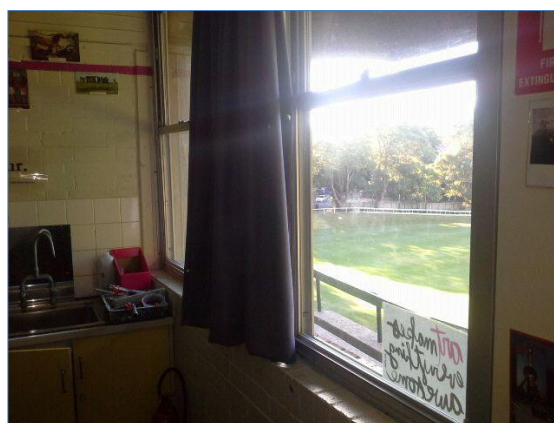
Photograph 08: Kiln room 2.14 - SMF insulated kilns



Photograph 11: North elevation - Asbestos water proofing membrane in position of balconies



Photograph 09: Kiln room 2.19 - SMF insulation within Kiln



Photograph 12: Studio 4 - 1.2 - Putty between aluminium window frame and glass pane

Asbestos Containing Material
Synthetic Mineral Fibre Material
Lead Based Paint System
Non-hazardous material

012 – Mansfield Building Photographs



Photograph 13: Level 2 room 2.6 - Fibre cement infill panels under windows. Asbestos bituminous membrane below flooring. Sheeting can be seen entering under bricks



Photograph 14: South entrance - Asbestos cement awning lining

Asbestos Containing Material
Synthetic Mineral Fibre Material
Lead Based Paint System
Non-hazardous material

Appendix N

013 – Perkins Building Photographs



013 – Perkins Building Photographs



Photograph 01: 013 - Perkins Building



Photograph 04: External perimeter - putty to windows



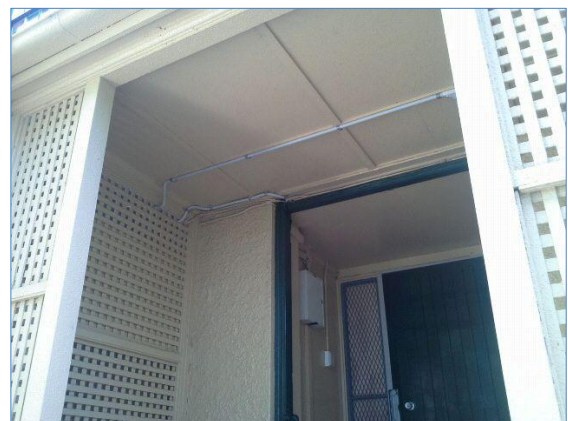
Photograph 02: External perimeter - Cream paint to walls and green paint to doors, frames and windows



Photograph 05: East elevation - Fibre cement cladding surrounding cleaner's room 1.7



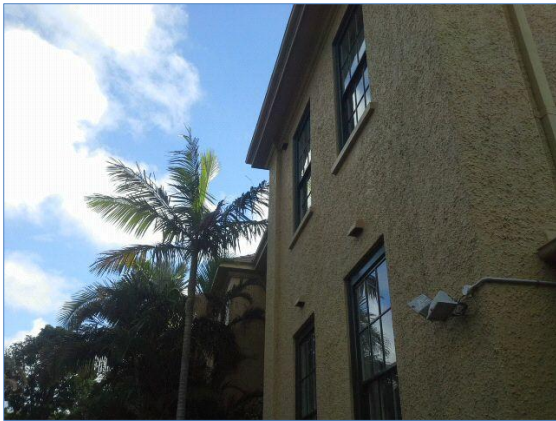
Photograph 03: South entrance - Asbestos cement awning lining



Photograph 06: East entrance - Asbestos cement awning lining

Asbestos Containing Material
Synthetic Mineral Fibre Material
Lead Based Paint System
Non-hazardous material

013 – Perkins Building Photographs



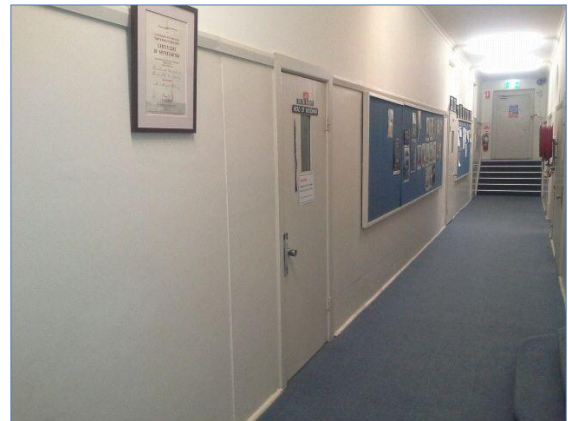
Photograph 07: External perimeter - Asbestos cement eave lining



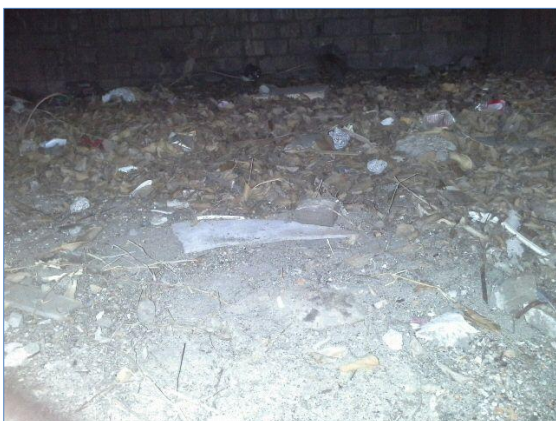
Photograph 10: Level 1 room 2.7 - SMF insulating batts above SMF containing suspended ceiling tiles



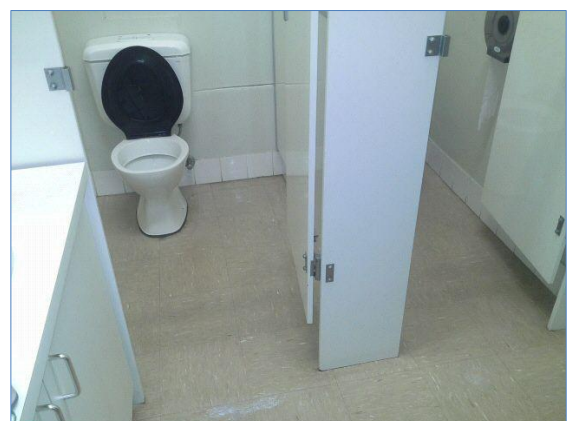
Photograph 08: North elevation entrance to room 1.3 - Asbestos cement wall cladding



Photograph 11: Paint to walls, doors and frames



Photograph 09: Foundation space below offices 1.3 & 1.4 - Asbestos cement debris throughout



Photograph 12: Level 1 Ladies 2.10 - Vinyl floor tiles and fibre cement toilet partitions

Asbestos Containing Material
Synthetic Mineral Fibre Material
Lead Based Paint System
Non-hazardous material

013 – Perkins Building Photographs



Photograph 13: Ground floor boys toilet 1, 2A – cement like toilet partitions



Photograph 15: Ground floor male staff 1.9 - Fibre cement wall lining south of urinal



Photograph 14: Ground floor under stairs cupboard accessed from male toilet 1.9 - SMF insulation within hot water unit

Asbestos Containing Material
Synthetic Mineral Fibre Material
Lead Based Paint System
Non-hazardous material

Appendix O

014 – Carter Building Photographs



014 – Carter Building Photographs



Photograph 01: 014 - Carter Building



Photograph 03: Throughout SMF suspended ceiling tiles



Photograph 02: Level 4 access balcony Fibre cement eaves and compress Fibre cement wall cladding

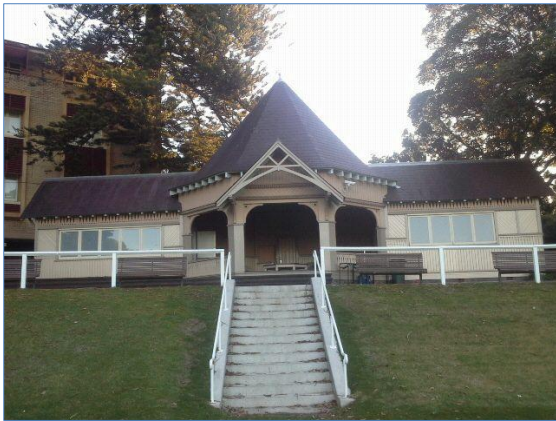
Asbestos Containing Material
Synthetic Mineral Fibre Material
Lead Based Paint System
Non-hazardous material

Appendix P

John Sanders Pavilion Photographs



John Saunders Pavilion Photographs



Photograph 01: John Saunders Pavilion



Photograph 03: Canteen ceiling space - Asbestos contaminated dust



Photograph 02: Canteen - Asbestos cement wall and ceiling lining



Photograph 04: John Saunders Pavilion - Green paint to ceiling and eaves, Tan paint to upper walls, Cream paint to lower walls, Mauve paint to door frame, skirting boards and trim.

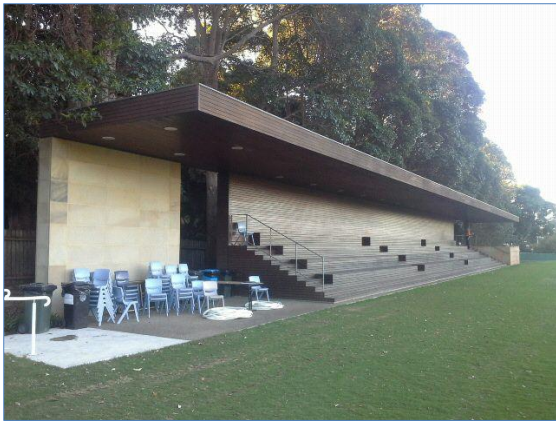
Asbestos Containing Material
Synthetic Mineral Fibre Material
Lead Based Paint System
Non-hazardous material

Appendix Q

Cranbrook School Playing Field Photographs

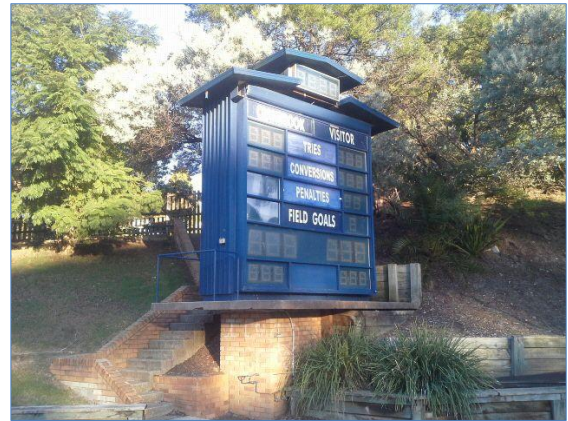


Cranbrook Playing Field Photographs



Photograph 01: 030 - Justin McDonald grandstand

No hazmat identified at time of survey



Photograph 03: Score board

No hazmat identified at time of survey



Photograph 02: Grounds keepers shed

No hazmat identified at time of survey

Asbestos Containing Material
Synthetic Mineral Fibre Material
Lead Based Paint System
Non-hazardous material