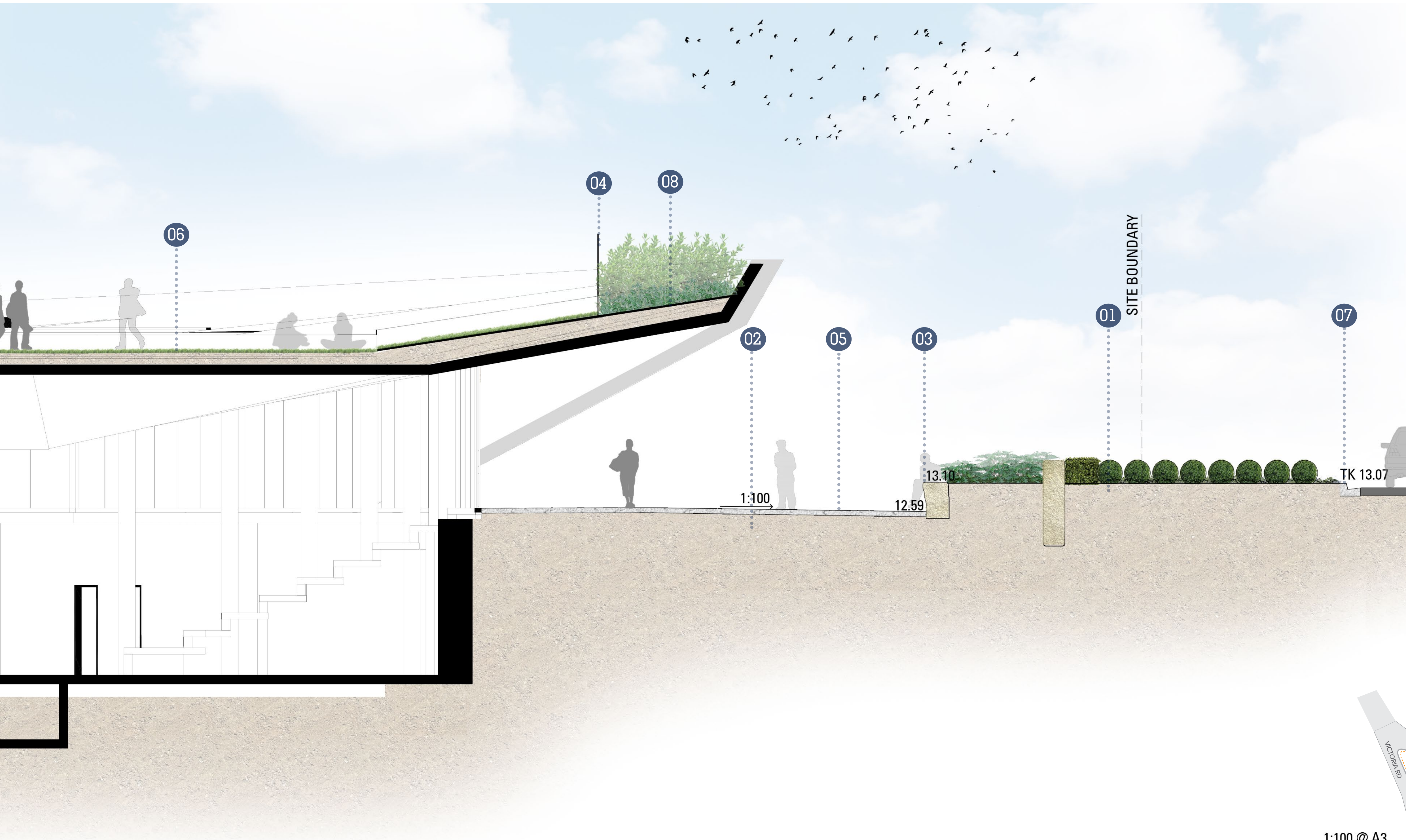


ZONE 3_AFC | SECTION

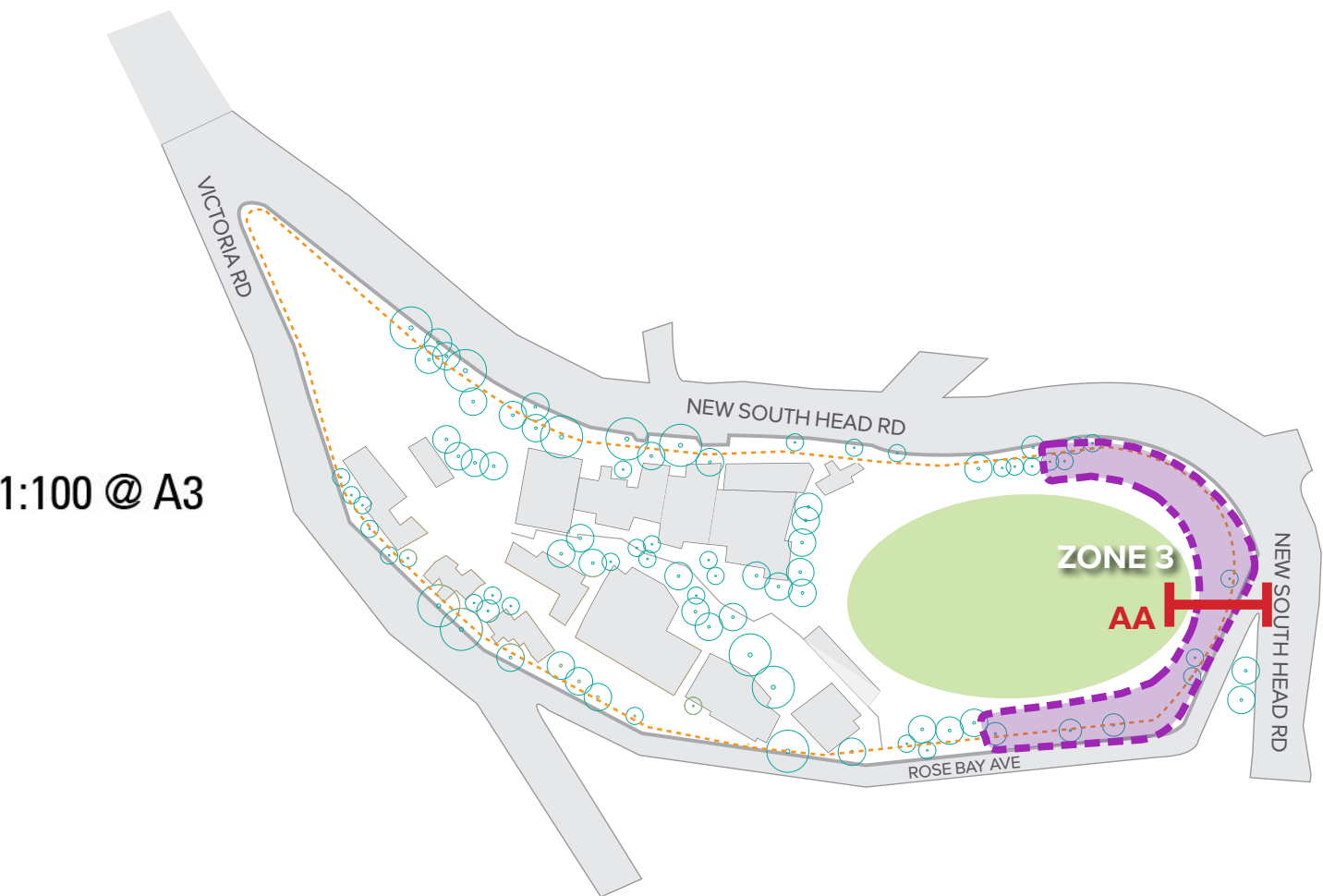


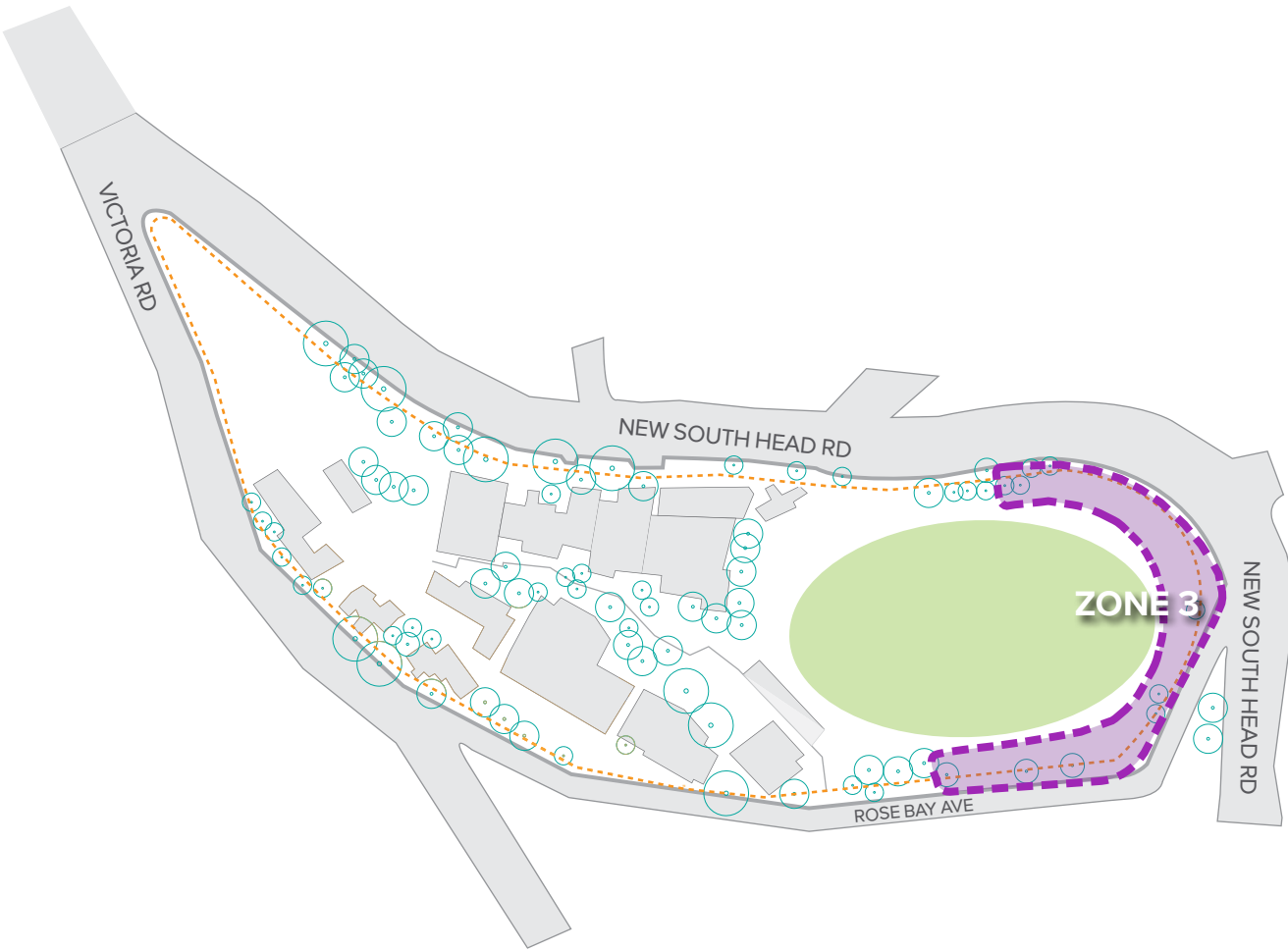
SECTION AA

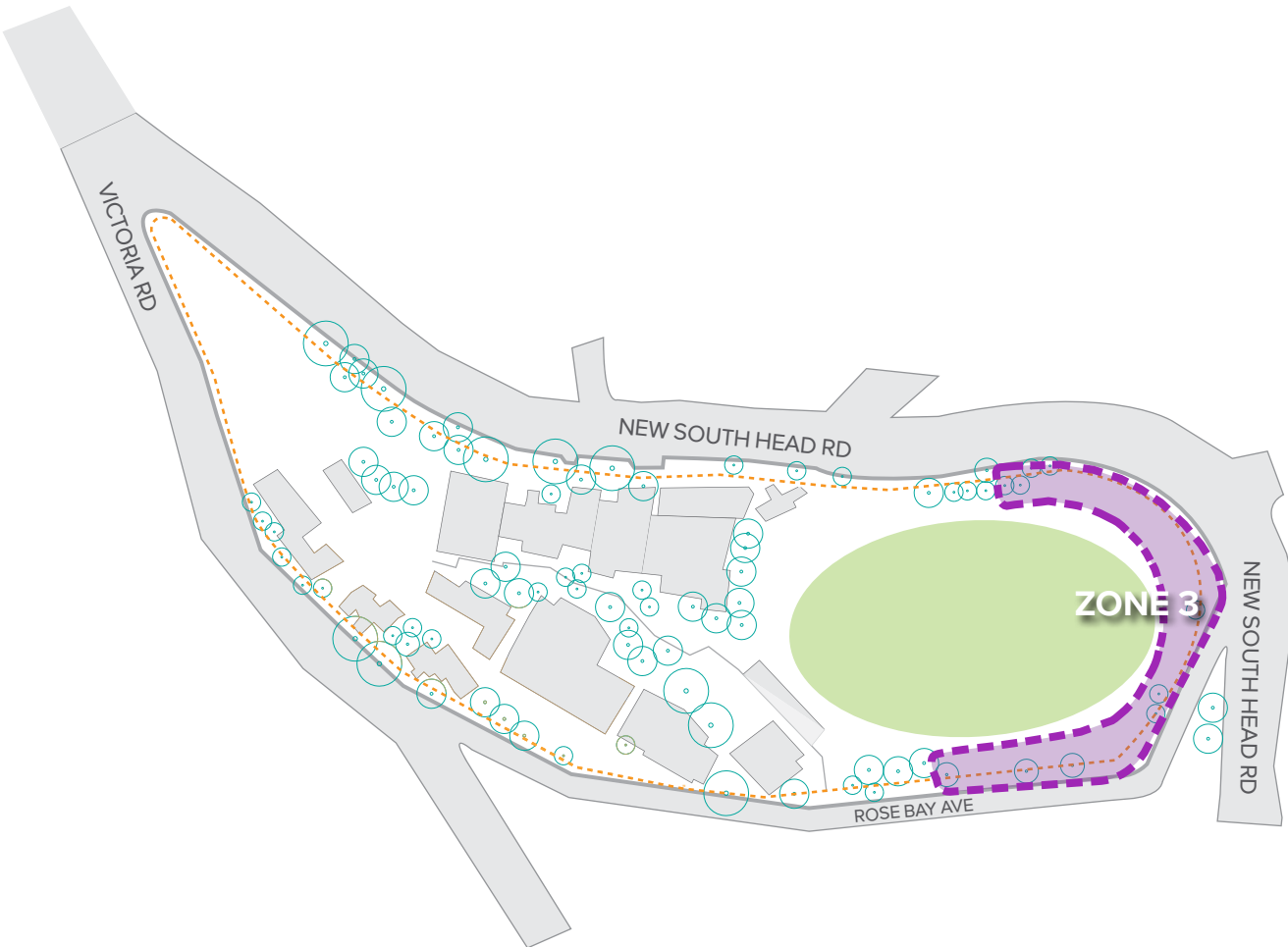
LEGEND

- 01 Vegetated buffer between entry courtyard and new south head road with low podium level topiary planting
- 02 Building forecourt and public pedestrian walkway
- 03 Sculptural retaining seat offset from building alignment (5.5m)
- 04 Integrated safety fencing
- 05 Bungaree interpretive heritage inlays
- 06 Grass extent of Hordern Oval
- 07 New South Head Road (existing kerbs retained)
- 08 AFC entry and facade (by Architectus)

0 1 2 3 4 5 M
SCALE 1:50 @ A1







ZONE 3_AFC | MATERIALS/ELEMENTS

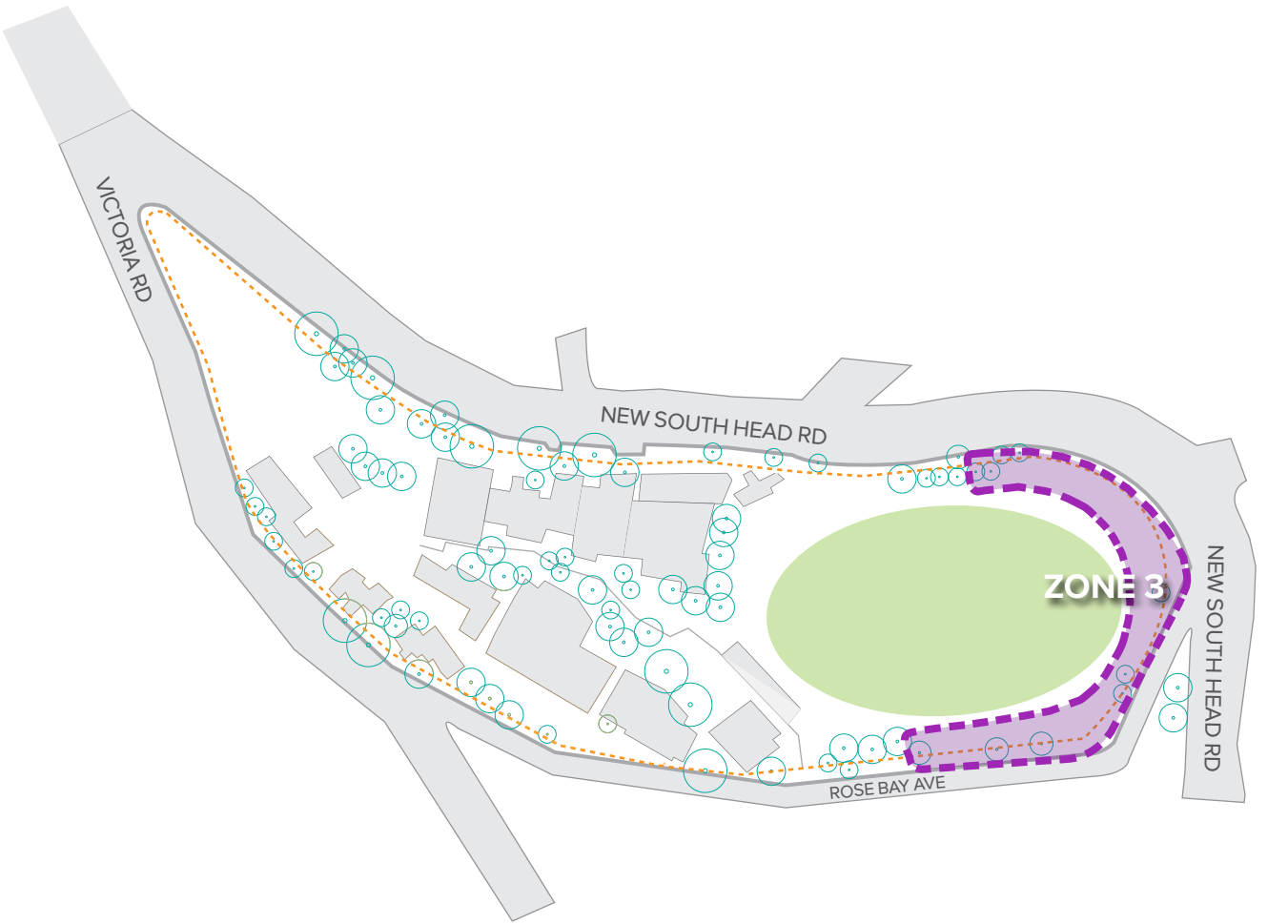
CHARACTER



Black granite surfaces

Carved sandstone wall

Interpretive inlays



ZONE 3_AFC | PLANTING

PLANTING STRATEGY

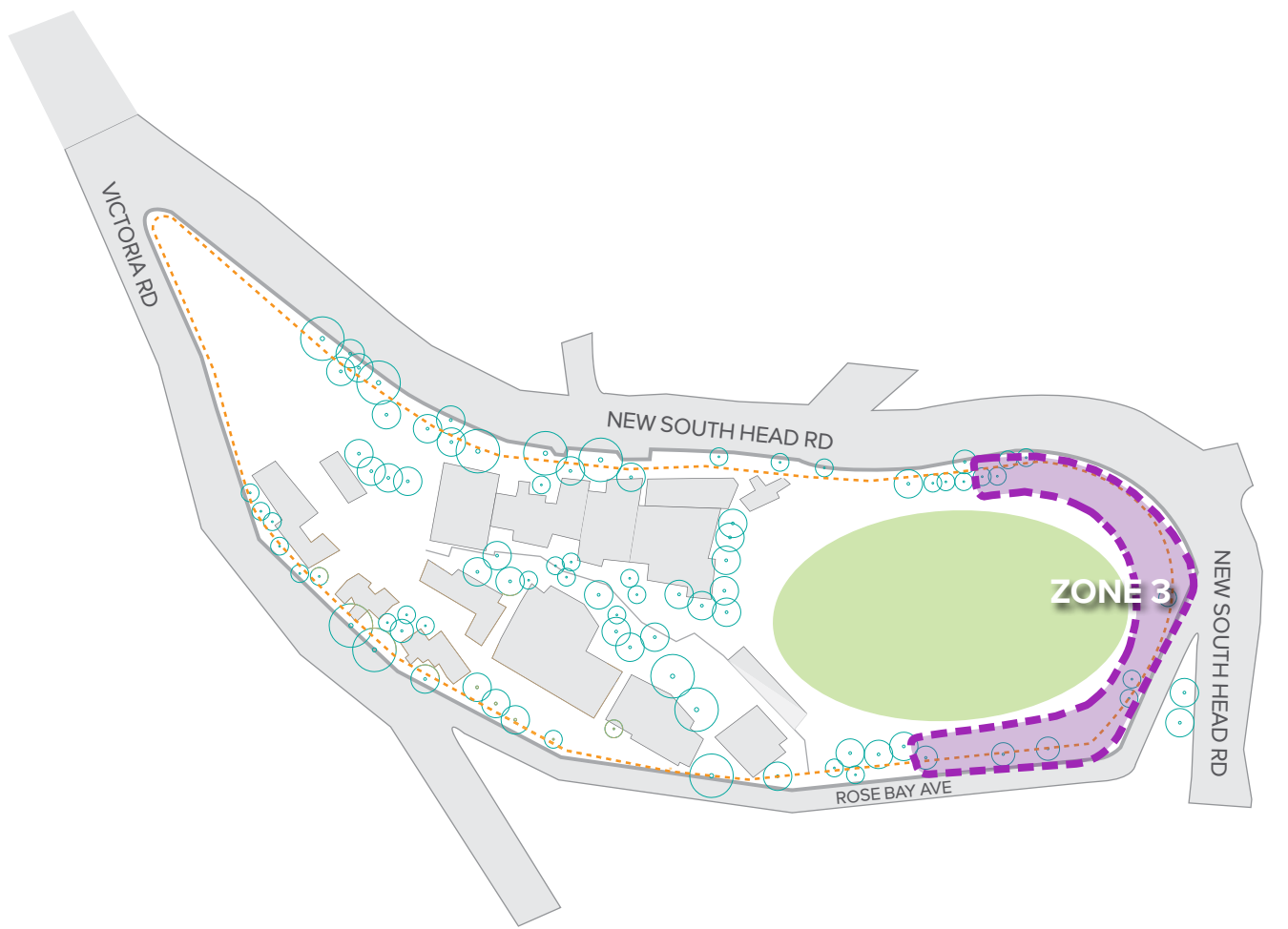
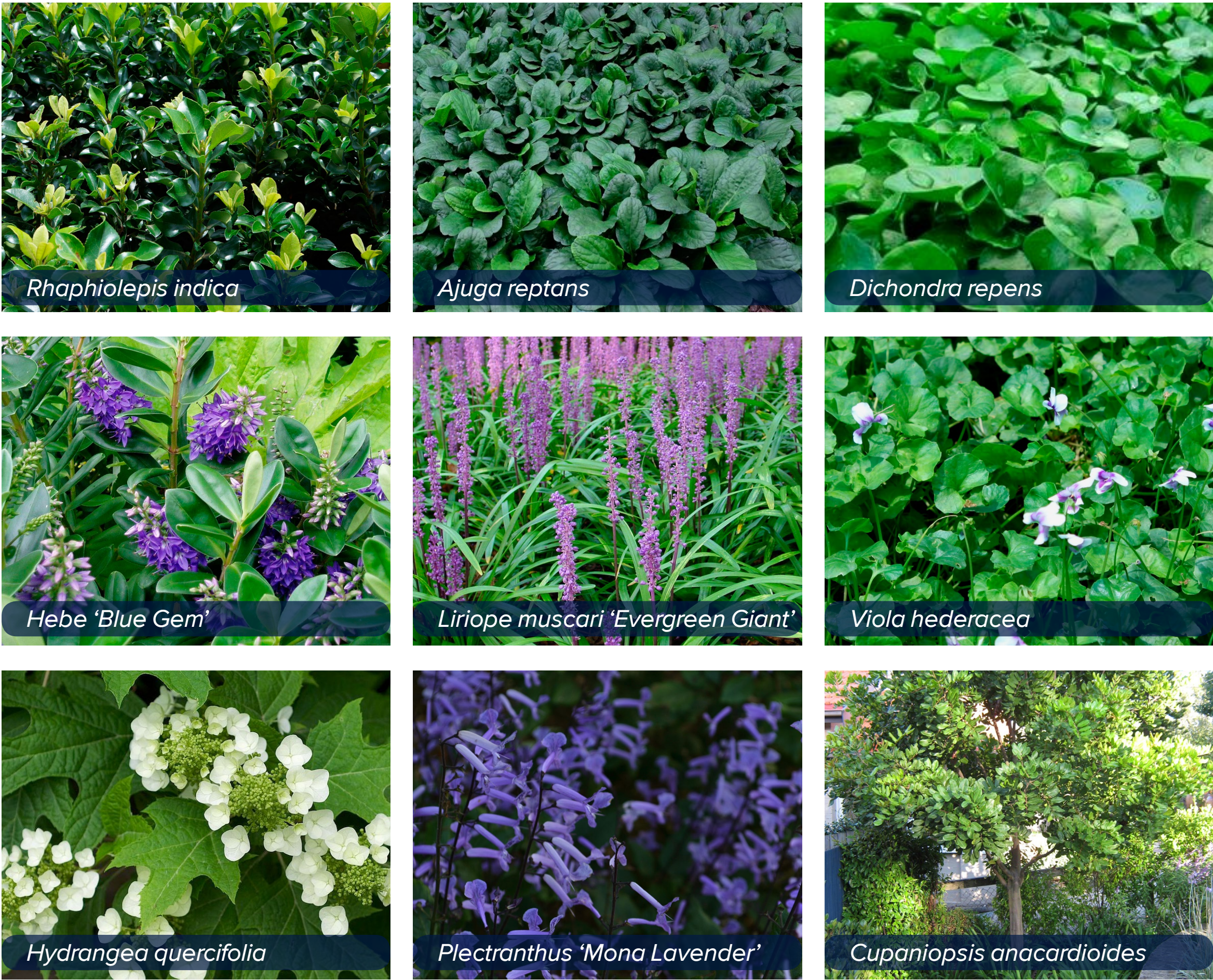
To establish a site specific vernacular for the AFC entry along New South Head Road, the planting strategy is important to find the authentic relationship between its existing Rose Bay character, the Cranbrook School manicured gardens and the Woollahra streetscape.

The planting strategy along the roads edge is to utilise a variety of tightly clumping, sculptural species to create a topiary sphere effect. The sculptural spheres create a level of formality for the prominent corner and allows the introduction of complementary species to the Cranbrook gardens. The forms can be maintained easily, will sufficiently screen the traffic wall and will introduce a striking visual effect to the AFC entry. The planting palette will comprise of both endemic and exotic species with low, textural properties presenting to the street, whilst allowing high levels of passive surveillance and views through to the proposed AFC entry.

PLANTING CHARACTER



PLANTING PALETTE



DRAWING SCHEDULE

DRAWING NO.	DRAWING TITLE
000	COVER SHEET
100	LANDSCAPE PLAN MASTERPLAN
101	WMH ROOF LEVEL - LANDSCAPE PLAN
102	WMH LEVEL 03 - LANDSCAPE PLAN
103	WMH LEVEL 02-00 - LANDSCAPE PLAN
104	ARC STREET LEVEL - LANDSCAPE PLAN
105	ARC OVAL LEVEL - LANDSCAPE PLAN

PLANTING SCHEDULE

17-481 CRANBROOK PLANT SCHEDULE								
CODE	BOTANIC NAME	COMMON NAME	MATURE SIZE (h x w) (m)	PROPOSED POT SIZE	QUANTITY			
					WMH Roof Level	WMH Level 03	WMH Level 02-00	ARC/Oval
TREES								
Agr	Agathis robusta	Queensland Kauri Pine	7 x 15	800L			2	
Ca	Cupaniopsis anacardioides	Tuckeroo	8 x 6	200L				4
Ee	Elaeocarpus eumundii	Quandong	6 x 3	200L				4
Im	Jacaranda mimosifolia	Jacaranda	10 x 8	800L		1	3	2
Mg	Magnolia grandiflora 'Little Gem'	Little Gem	5 x 3	200L	1			
Up	Ulmus parvifolia	Chinese Elm	10 x 15	400L		3		
WF	Waterhousea floribunda	Weeping Lilly Pilly	10 x 5	200L				9
SHRUBS & ACCENTS								
Aa	Asplenium australasicum	Bird's Nest Fern	1 x 1	300mm		19		
As	Acmena smithii	Common Lilly Pilly	4 x 8	300mm			26	
Ac	Arthropodium cirratum	New Zealand Rock Lily	0.5 x 1	200mm		22		
Ae	Aspidistra elatior	Cast Iron Plant	1 x 1.5	200mm		38		
Am	Acanthus mollis	Oyster Plant	1 x 1	200mm			8	
Bm	Buxus microphylla 'Japonica'	Japanese Box	1 x 1	300mm	96			42
Bmk	Buxus microphylla var. Koreana	Korean Box	0.6 x 0.8	300mm	2			
CC	Convolvulus cneorum white	Silverbush	0.6 x 0.9	150mm	5			
Cg	Cordyline glauca	Green Ti Plant	2.5 x 1.5	200mm				
Cm	Clivia miniata	Kaffir lily	0.5 x 0.8	200mm				
Cs	Camellia sasanqua	Camellia	2 x 4	300mm			15	
Ct	Choisya ternata	Mexican Orange Blossom	1 x 2	300mm				
Do	Daphne odora	Winter Daphne	1 x 1.5	200mm	4			
Dt	Dianella tasmanica	Tasred	0.5 x 0.65	150mm				270
Ee	Euphorbia characias subsp. wulfenii	Euphorbia	1 x 1.5	200mm		27		
Ei	Escallonia 'Iveyi'	Escallonia	1 x 2	200mm	65			
Ga	Gardenia augusta 'Florida'	Florida Gardenia	0.5 x 1	300mm	54			
Im	Liriope muscari 'Evergreen Giant'	Lilyturf	0.5 x 0.5	150mm			7	1041
Li	Liriope muscari 'Isabella'	Isabella	0.4 x 0.5	150mm				449
Ln	Lomandralongifolia 'Nyalia'	Nyalia	0.8 x 0.8	150mm				540
Hb	Hebe 'Blue Gem'	Blue Veronica	1 x 1	300mm			10	43
Hq	Hydrangea quercifolia	Oakleaf Hydrangea	1.5 x 1.5	300mm				23
Mp	Murraya paniculata	Orange Jessamine	3 x 2	300mm		64		
Pc	Plectranthus ciliatus	Plectranthus	0.6 x 1	150mm			10	
Pml	Plectranthus 'mona lavender'	Plectranthus	1 x 1.5	150mm				163
Pt	Pittosporum tobira 'Miss Muffet'	Miss Muffet	1 x 1.5	300mm			8	39
Pto	Pittosporum tobira	Japanese Pittosporum	2 x 2	300mm	142			
Px	Philodendron 'Xanadu'	Xanadu	1 x 1	150mm		115	202	791
Ri	Raphiolepis indica	Snow Maiden	1.5 x 1.5	300mm				407
RAM	Rhododendron indica 'Alba Magnifica'	White evergreen Azalea	0.5 x 1	200mm	49			
Rr	Rosa rugosa var. alba	Hedgehog Rose	1.5 x 1.5	200mm	6			
RTB	Rosmarinus 'Tuscan Blue'	Tuscan Blue Rosemary	1.5 x 1	200mm	24			
Sw	Spathiphyllum wallisii 'sensation'	Giant Peace Lily	1.5 x 10	200mm		18	21	
Sr	Syzygium 'Resilience'	Resilience Bush Cherry	3 x 2	200mm				81
GROUNDCOVERS & CLIMBERS								
Ar	Ajuga reptans	Bungle	0.5 x 1.0	150mm	159	34	71	233
Mp	Myoporum parvifolium	Yareena	0.1 x 1	150mm				135
Pml	Plectranthus 'Mona Lavender'	Mona Lavender	0.75 x 0.75	150mm				
Ta	Trachelospermum asiaticum	Japanese Star Jasmine	0.25 x 1	150mm	51	17	18	285
Ts	Thelychiton speciosus	Rock Orchid	0.4 x 0.4	150mm			102	
Vh	Viola hederacea	Native Violet	0.2 x 0.5	150mm	39	23	10	451
Wl	Wisteria floribunda 'Royal Purple'	Japanese Wisteria	3 x 10	150mm	10			

KEY PLAN

SCALE: 1:1000@A1

