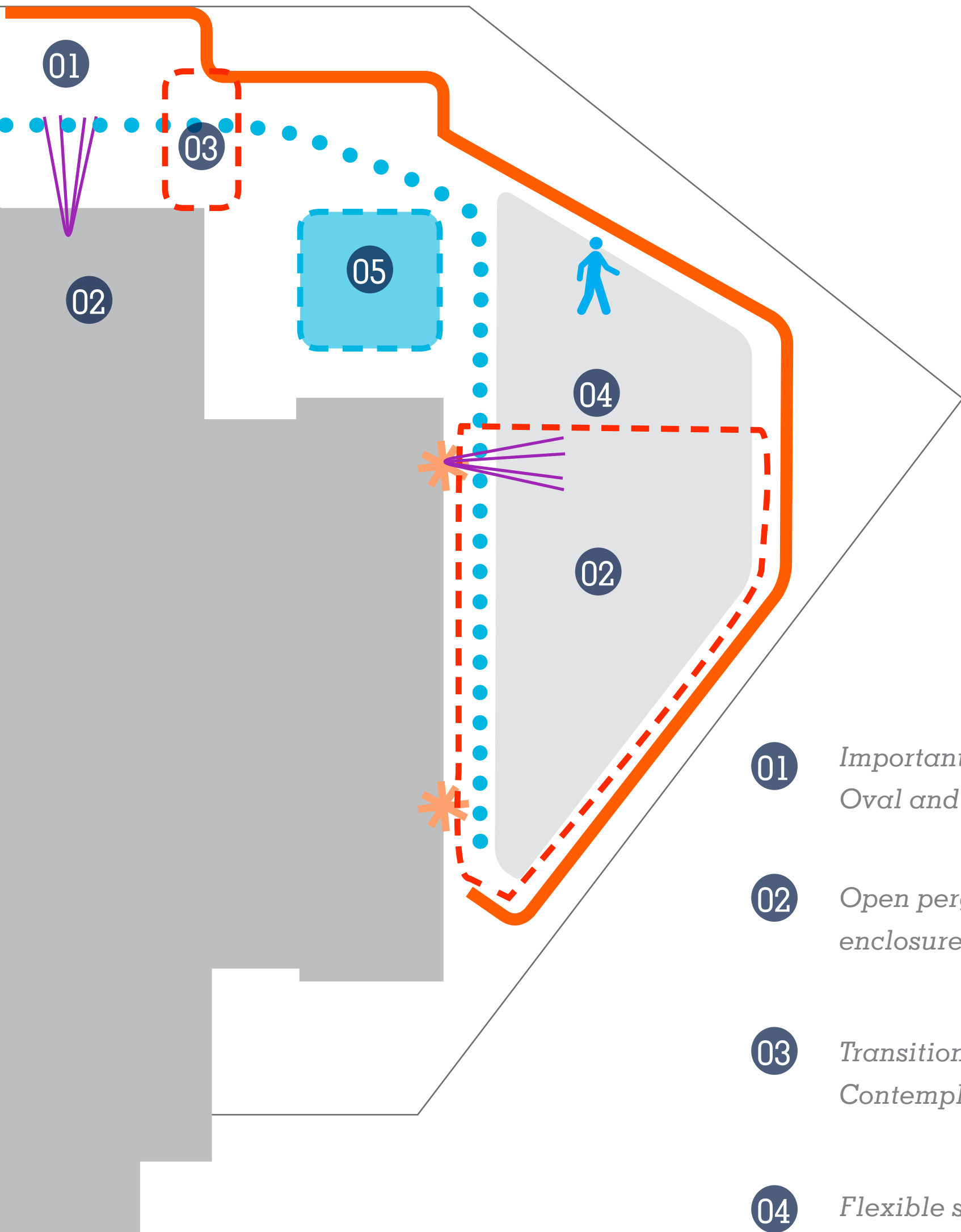


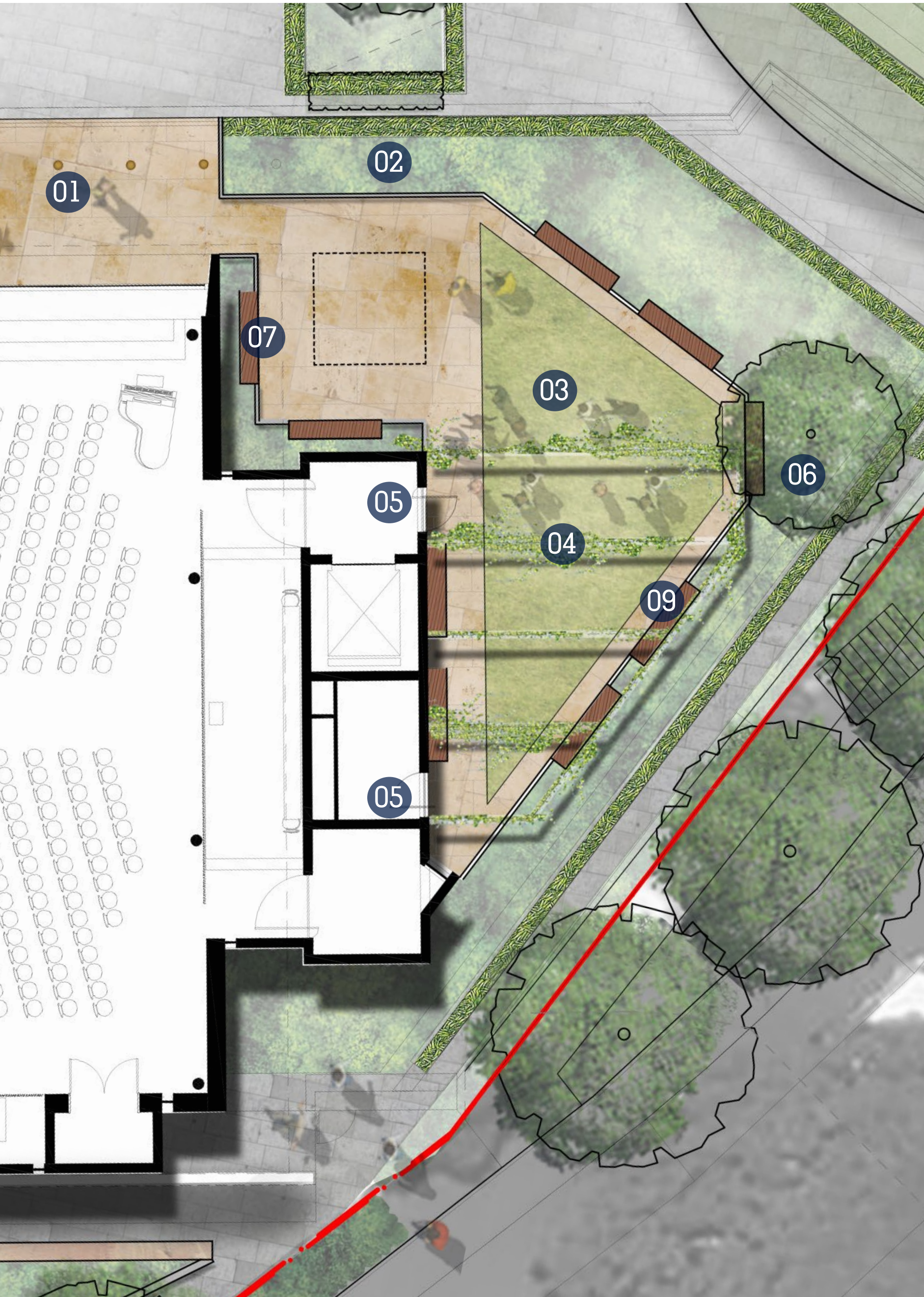
ZONE 1_CENTENARY BUILDING MEMORIAL GARDEN

DESIGN CONSIDERATIONS



- 01 Important views across Hordern Oval and Sydney Harbour
- 02 Open pergola area creating enclosure and intimacy
- 03 Transitional zones, gateway to Contemplation Garden
- 04 Flexible spill out spaces for varying sized groups and occasions
- 05 Calming water body contributes to experience of garden

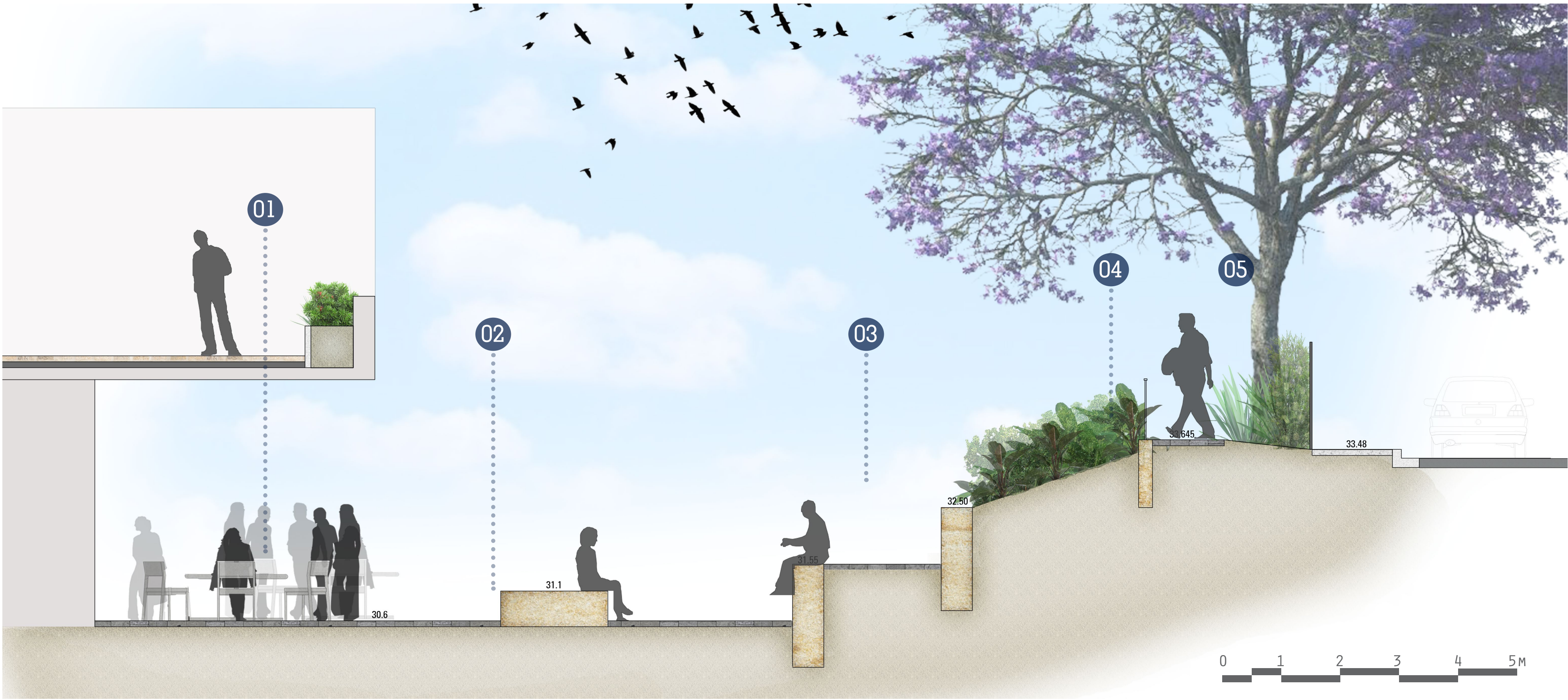
DETAIL PLAN



- LEGEND**
- 01 Sandstone surfacing
 - 02 Formal edge planting
 - 03 Flexible turf area with integrated seating edges
 - 04 Overhead pergola structure with Wisteria climbers
 - 05 Access point
 - 06 Feature tree in raised planter
 - 07 Fixed bench seating

0 2.5 5 7.5 10M
SCALE 1:100 @ A1

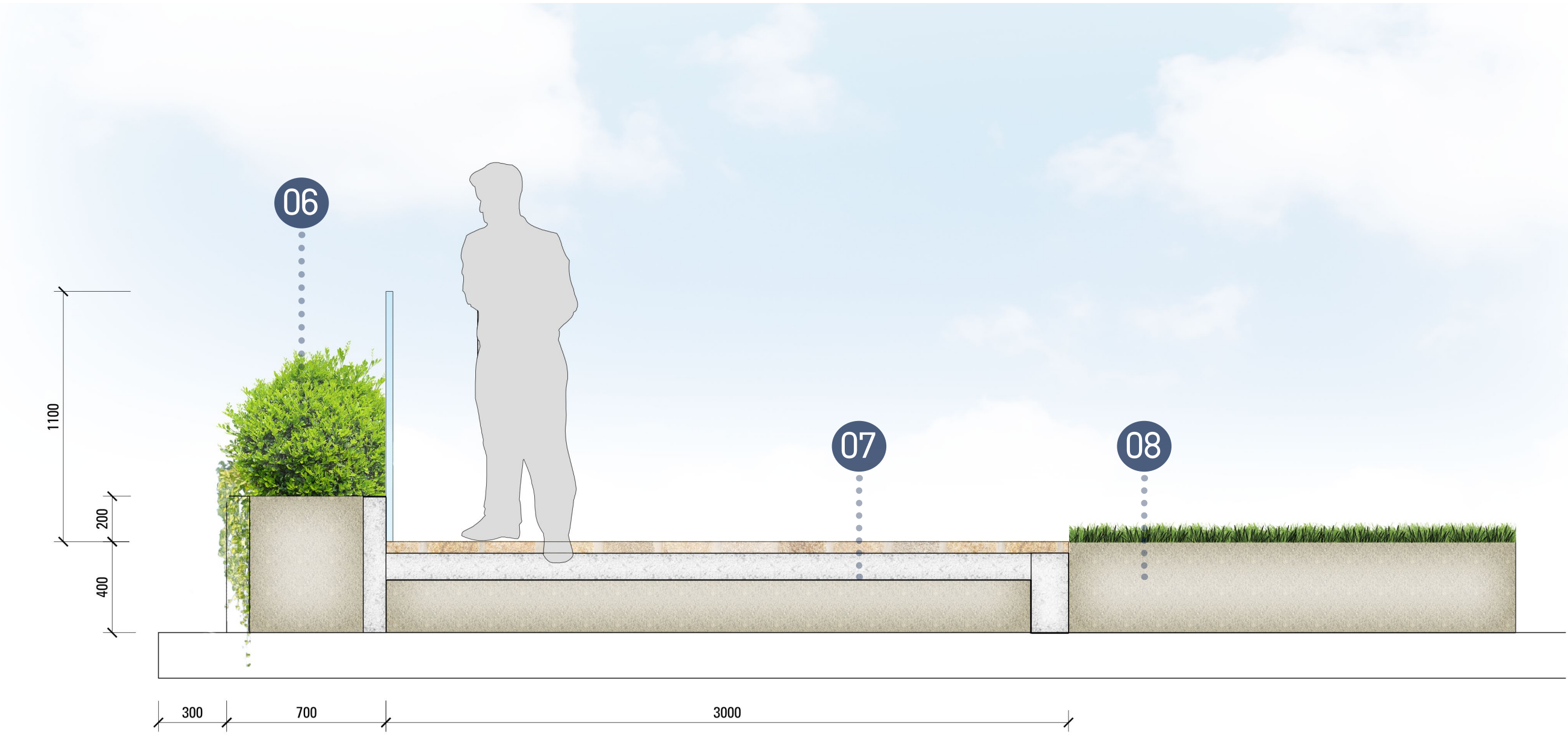
ZONE 1_CENTENARY BUILDING | SECTIONS



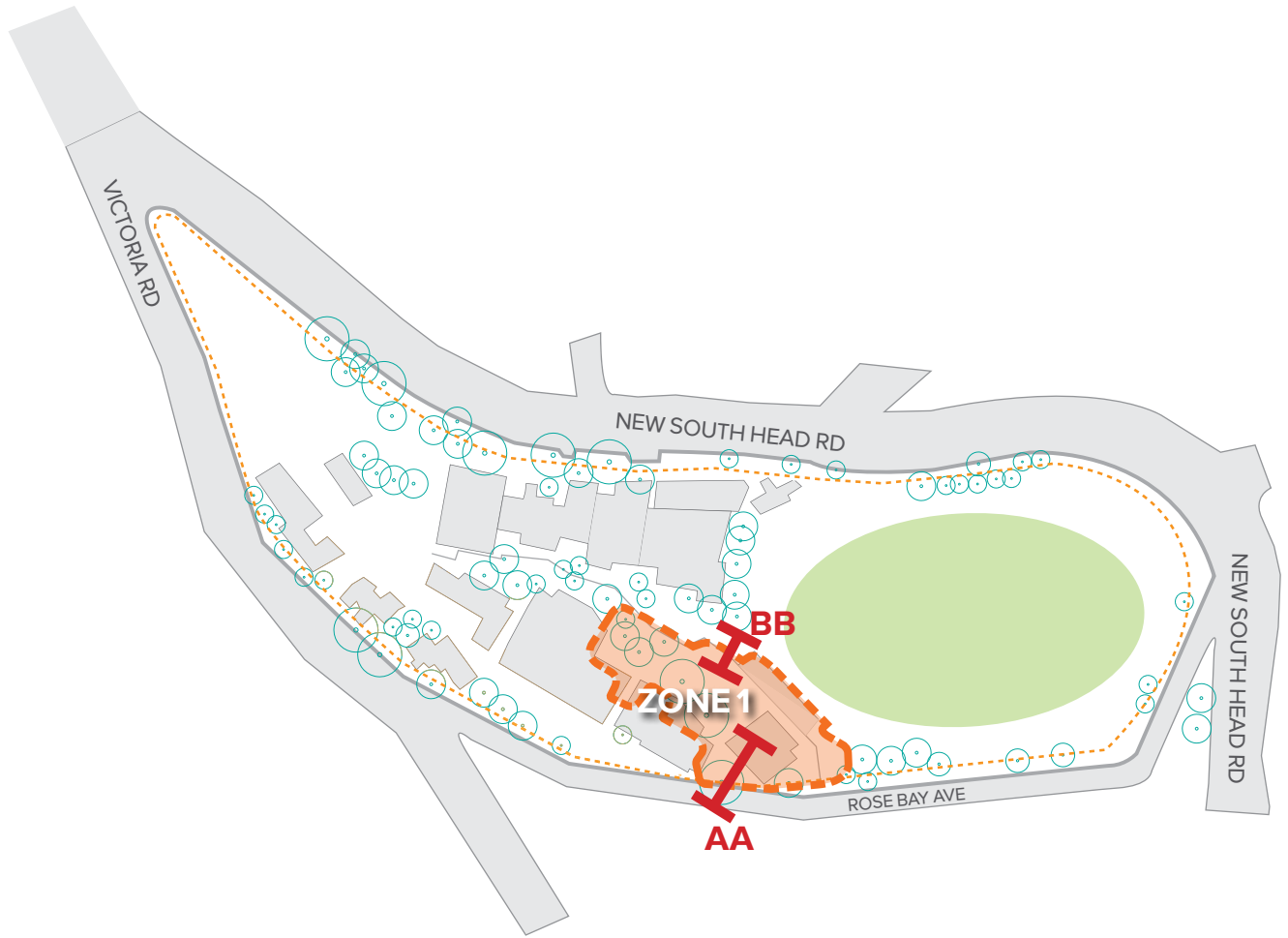
SECTION AA
scale 1:50

LEGEND

- 01 Covered courtyard with movable furniture
- 02 Sandstone seating / gathering terrain with outdoor learning potential
- 03 Secondary pathway link between level 3 and 4 of WMH building
- 04 New garden bed planting
- 05 Existing Jacaranda to be retained
- 06 Formalised garden with climbers
- 07 Paving transition between turf space and heritage curtilage
- 08 Open, flush turfed Memorial Lawn and event space



SECTION BB
scale 1:25





ZONE 1_CENTENARY BUILDING | MATERIALS/ELEMENTS

CHARACTER



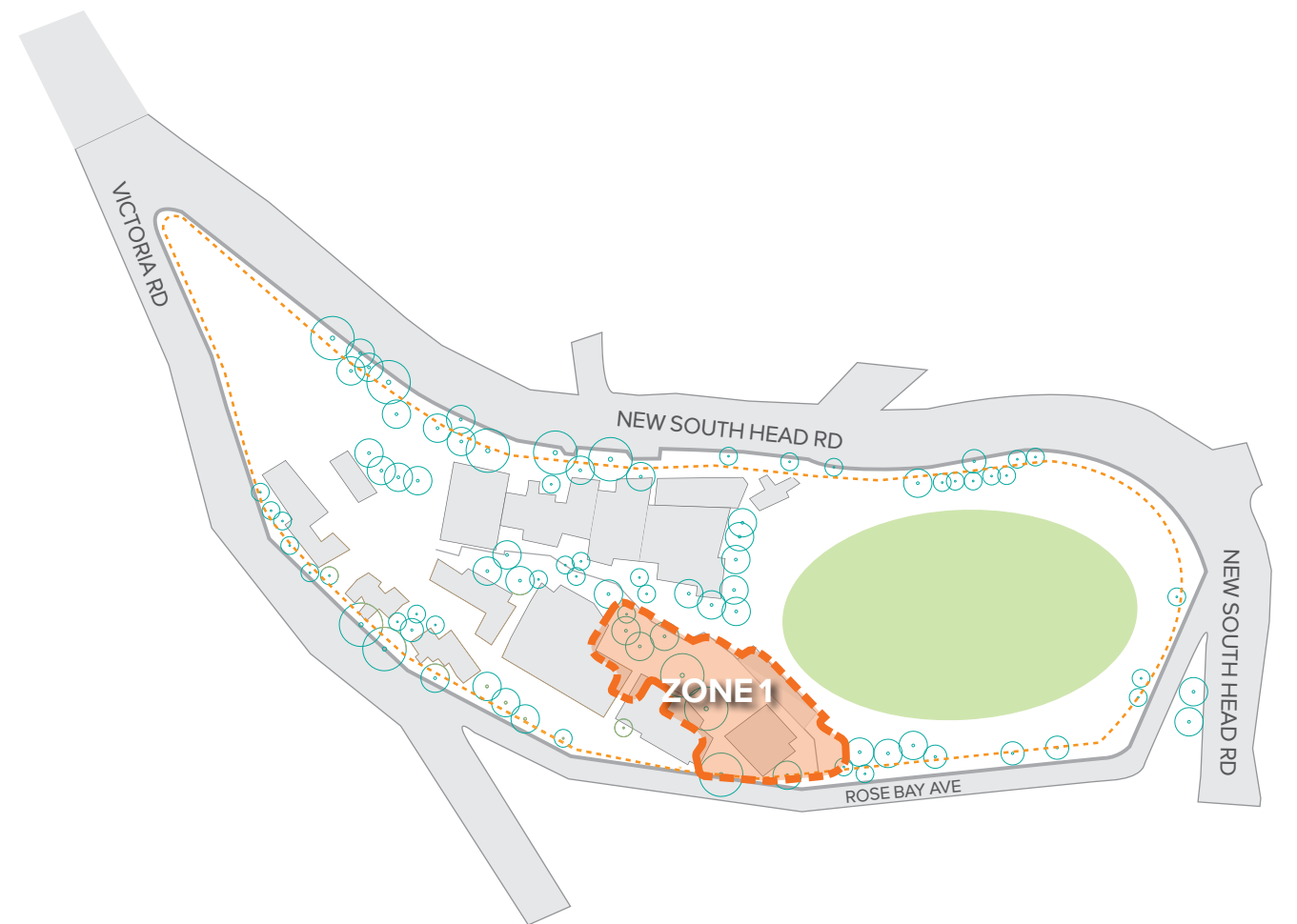
Existing sandstone paving



Proposed sandstone paving



Raised planters with glass balustrade



ZONE 1_CENTENARY BUILDING | PLANTING

PLANTING STRATEGY

The planting strategy in zone 2 takes cues from the colonial formal gardens of the 19th Century.

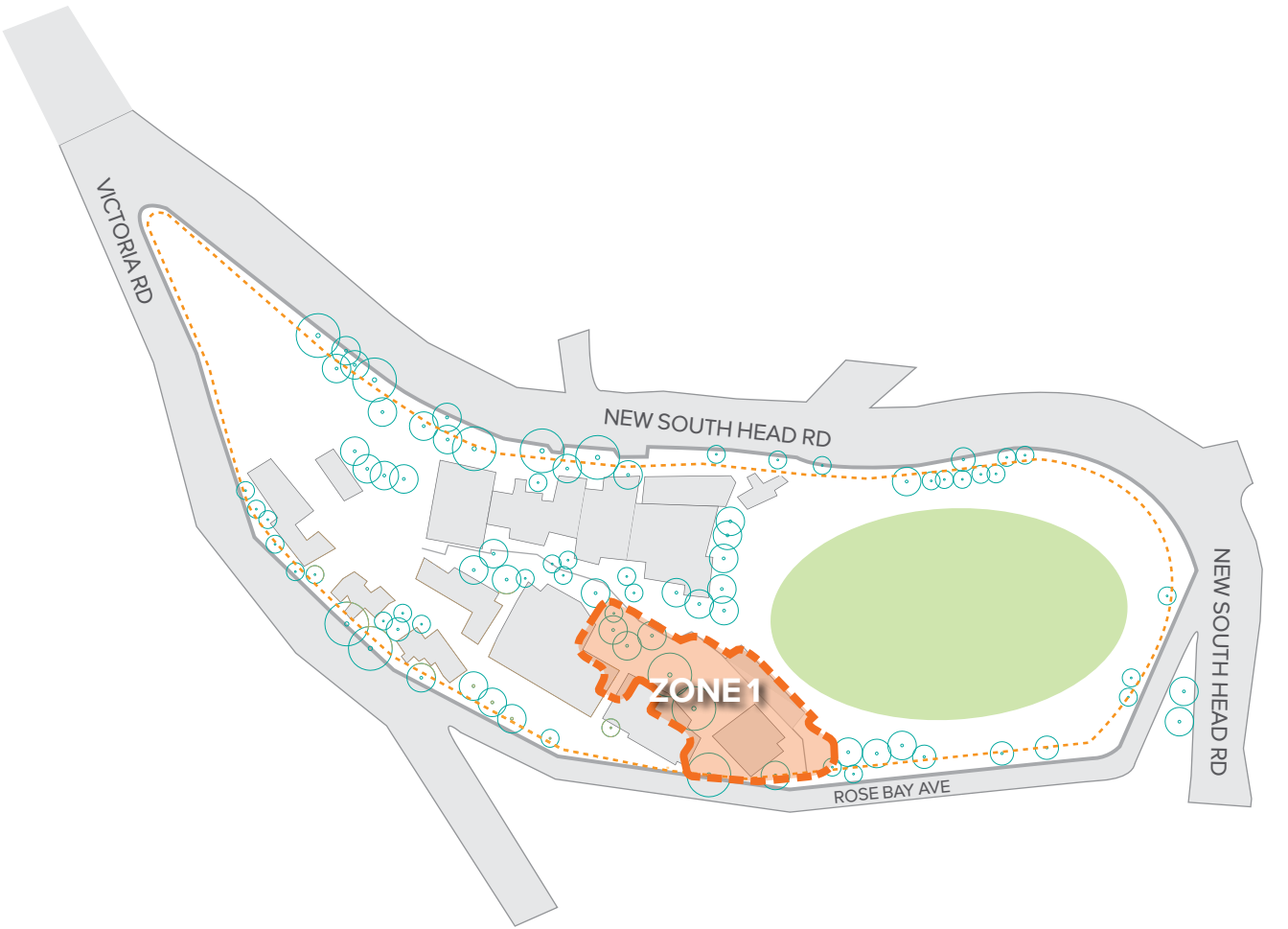
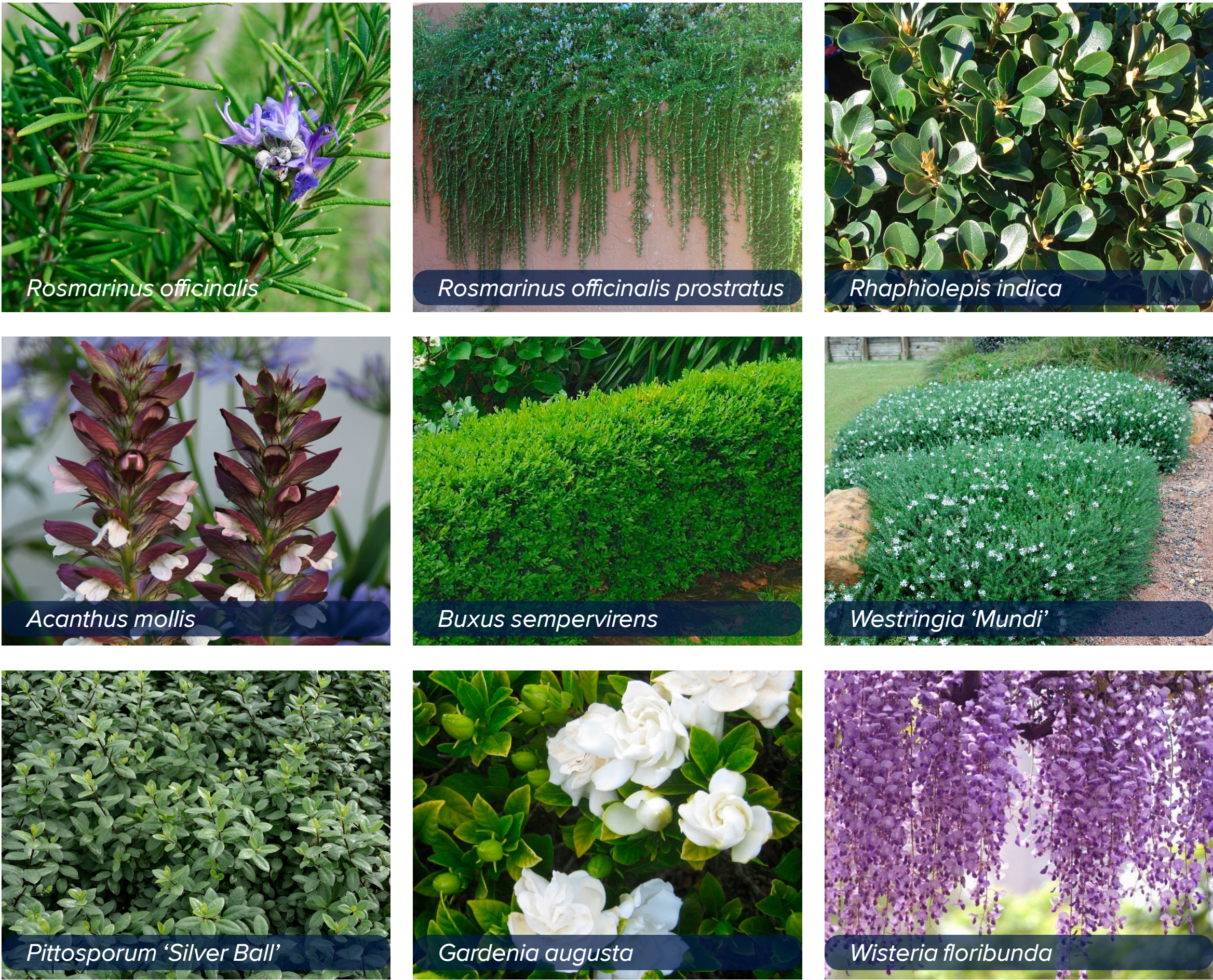
Through the use of an open 'Centenary Lawn' with manicured hedge planting to the boundary, this space provides an area of quiet reflection. The use of rosemary centred around a proposed memorial plaque is used as a symbol of remembrance.

A contemplation garden, located behind the proposed chapel strengthens the quiet, reflective character of the Centenary Lawn. Through the use of a sensory planting palette, the garden will express themes of colour, texture and scent, guiding people through the space.

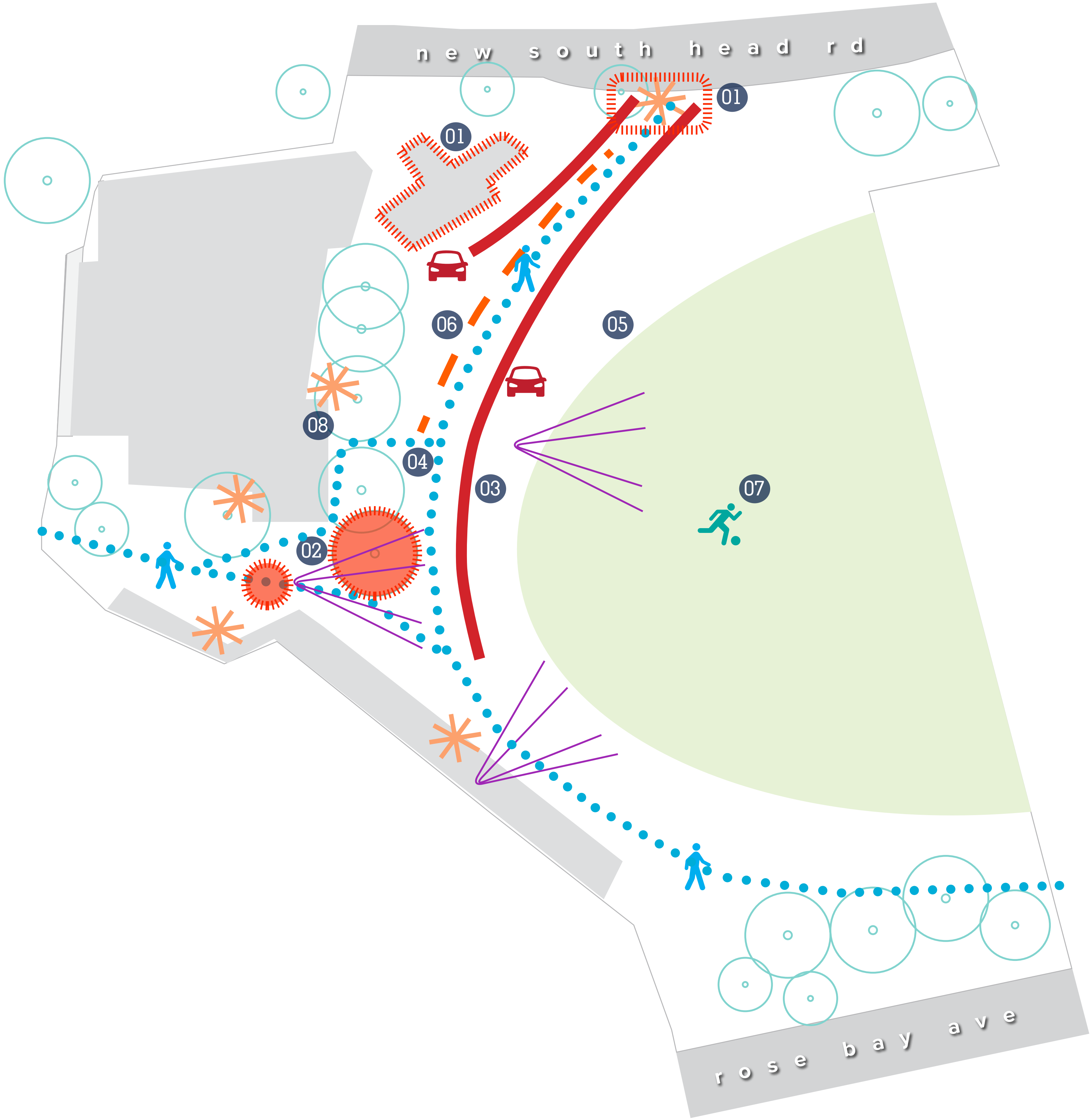
PLANTING CHARACTER



PLANTING PALETTE



ZONE 2_TERRACE | CONSIDERATIONS



DESIGN CONSIDERATIONS

- 01 *Heritage gates and pavilion to be respected*
- 02 *Heritage tree plantings to be retained and protected*
- 03 *Provision for truck (3 Tonne) access for servicing of events etc*
- 04 *Fluid and accessible pedestrian connections from front gates to vertical transport and upper school precinct*
- 05 *Currently inaccessible / unusable turf embankment to the edge of the oval*
- 06 *Excessive standalone furniture and balustrades detracts from the oval interface and limits access*
- 07 *Functionality of the oval is paramount for the students and various sporting groups*
- 08 *Support existing entry points, respecting levels*

