

Design Response

2.18 Architectural Finishes

The materiality of the building is driven by locally sourced materials used in an authentic manner to underpin the School's commitment and investment into enhancing the environment and a pursuit of design excellence to provide a world class teaching facility which can be used as the benchmark for teaching practices at Cranbrook.

The School will be constructed of durable, resilient, and adaptable materials which will evolve over time and have timeless and classic qualities to ensure they knit into the existing fabric of the School. Materials such as Gosford Quarry Sandstone, Copper and Australian Hardwoods achieve a purposeful composition of materials and elements through a rigorous design process to provide a contemporary Architectural solution which references the heritage qualities of the site.

The large volume required for the Basketball court of in the Centenary Building is humanised through architectural techniques which reduce the scale. The Solar shading created through copper fins, will control the solar gain, and offer a sense of permanency, patinating and aging over time as the building settles further into its surroundings. Integrated landscaping strategies soften the architectural composition with planting across each of the terrace levels and enhances the public facing areas.

The Teaching Terraces create engaging and attractive environments to learn outdoors, set back from the boundary with landscaping acting as a buffer to provide privacy and to reduce the impact of new development on the surrounding community whilst allowing for passive and dynamic play of different age groups within the school.

The use of sandstone on the Centenary building helps the new building stich into the existing fabric of the school and is used in direct conversation with the existing sandstone elements of the campus such as the sandstone stairs on teaching street and the heritage buildings on the Heritage Precinct.

The Aquatic and Fitness Centre façade is a sweeping arc which is created in sandstone with a warm aggregate in order to enhance public facing areas and provide an engaging environment for pedestrians visually along the public street frontage and plaza which integrates the landscape design.



01 Aquatic Fitness Centre north facade  
02 Chapel  
03 Centenary building











Design Response

2.18.1 Architectural Design Studies

Post design competition the Architectus design team carried out a series of meetings with key stakeholders at the school to ensure a carefully conceived, documented, and thoroughly reviewed set of principles drove a high-quality design outcome.

Through consultation with the school to define a rigorous project brief for the location of the major elements Architectus created a matrix of criteria for each study to be analysed against such as the visual impact, accessibility, sympathy to heritage items and the urban design outcome.

The three studies which will fully taken to their conclusion included:

Study 1 A - The Chapel as a single building on the heritage lawn with the theatre at ground level with a shared foyer to the multipurpose hall on the same level

Study 2 - The Chapel as a single building on the heritage lawn with the theatre underground below the multipurpose hall

Study 6- The Chapel and theatre both situated on the heritage lawn

Study 6 provided the theatre with an abundance of natural light and created an arts precinct at street level with music and drama having shared use of The Chapel and theatre. Through thorough testing of the mass of this option it was decided that it was not sympathetic to the heritage context and may also result in a loss of amenity and view of the neighbouring properties.

Study 2 was potentially seen as the most cost-effective solution minimising the footprint of excavation and providing a vertical connection down to the theatre. The loss of all opportunity for natural light in the theatre space was seen as the biggest failure of this design option and was disregarded due the substandard amenity provided to the pupils and teachers.

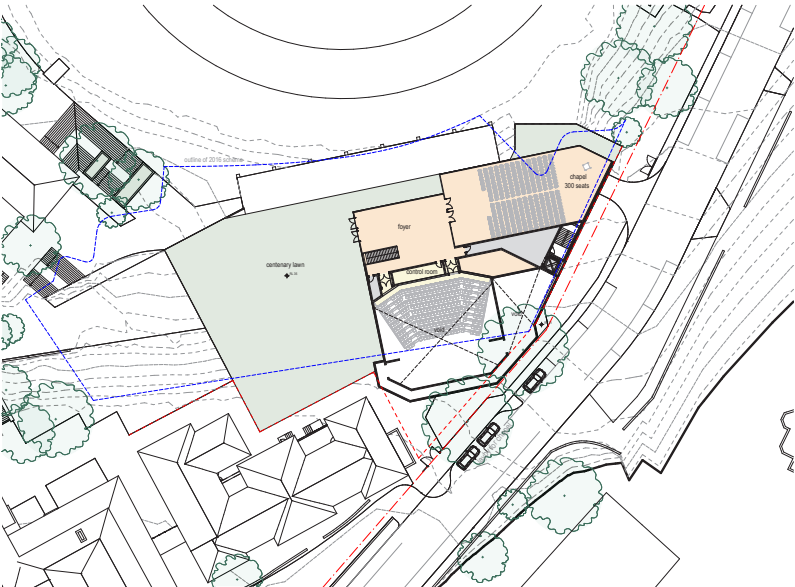
Study 1 A was the preferred option which met the objectives and needs of the project, setting the design ambitions and the pedagogical approach without prescribing a defined solution whilst allowing the flexibility of a range of uses in the future. This scheme was also the most sympathetic to the heritage and the neighbouring context whilst providing the efficiencies of a shared lobby space with Multipurpose Halls and provided a superior entry sequence for pupils, staff and visitors.

		Theatre's Proximity to Chapel	Theatre's Proximity to Multi-purpose Hall	Foyer Theatre Experience	Internal Theatre Experience	Theatre's Proximity to Teaching spaces	Urban Design	Sympathy to Heritage	Visual Impact	Theatre Loading	Accessibility
Study 2	RL 35										
	RL 36										
	RL 37										
Study 1 A	RL 35										
	RL 36										
	RL 37										
Study 6	RL 35										
	RL 36										
	RL 37										
	RL 35										
	RL 36										
	RL 37										

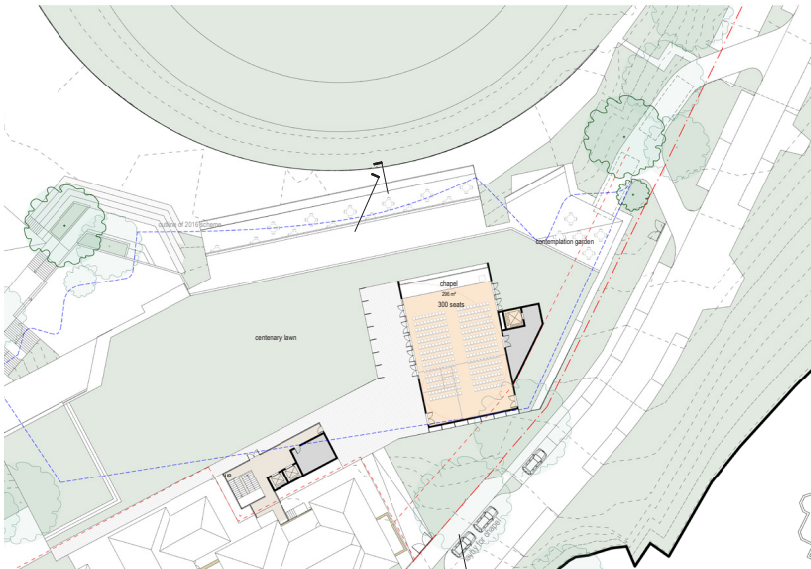
Cranbrook School War Memorial Building Theatre Location Study



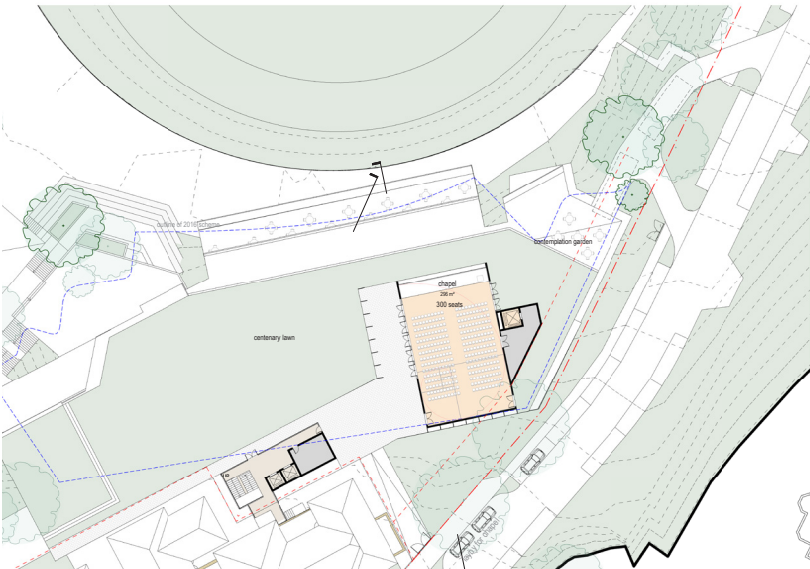
Design Response



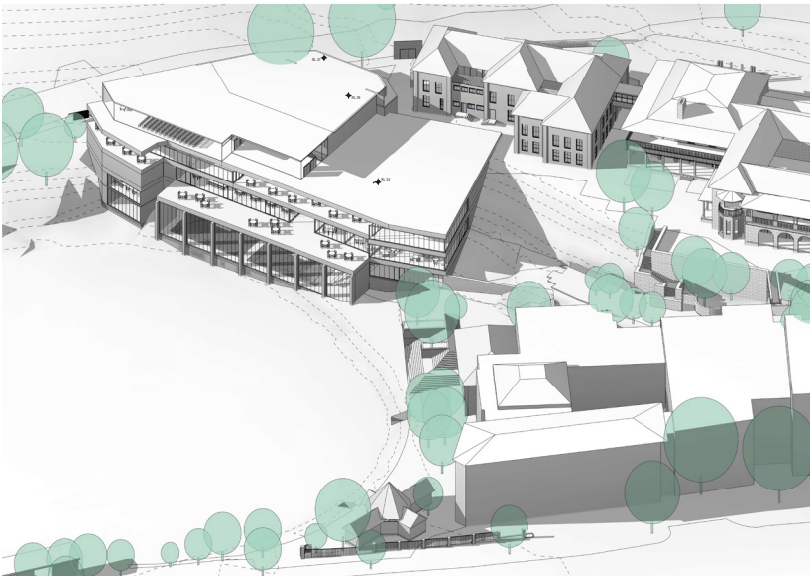
Design option with theatre on upper levels



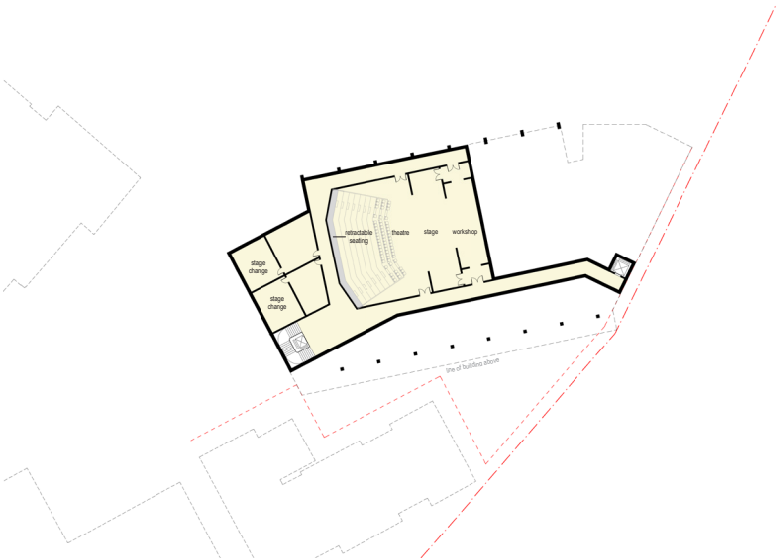
Design option with theatre basement level



Design option covered canopy between chapel and Perkins building



Design option with theatre on upper levels



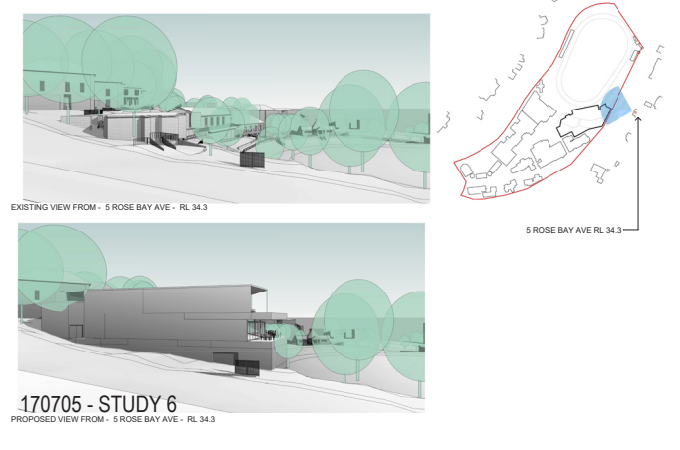
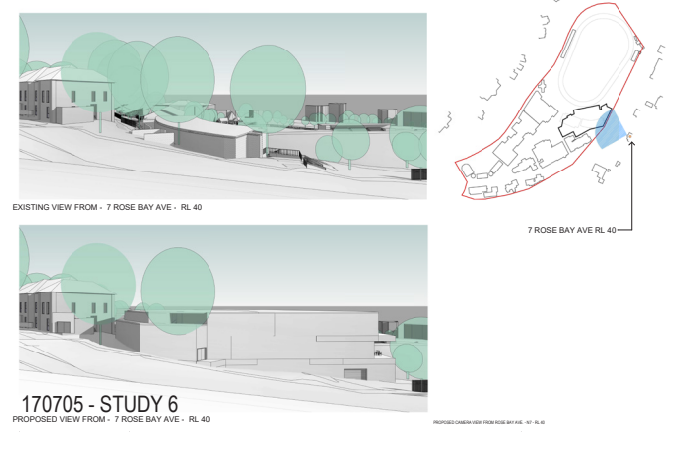
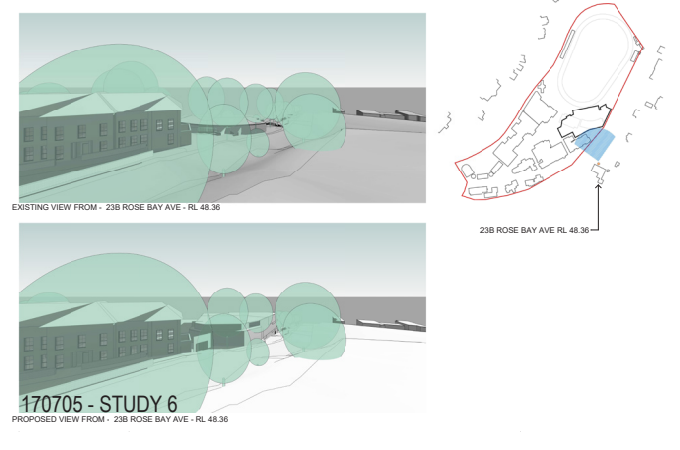
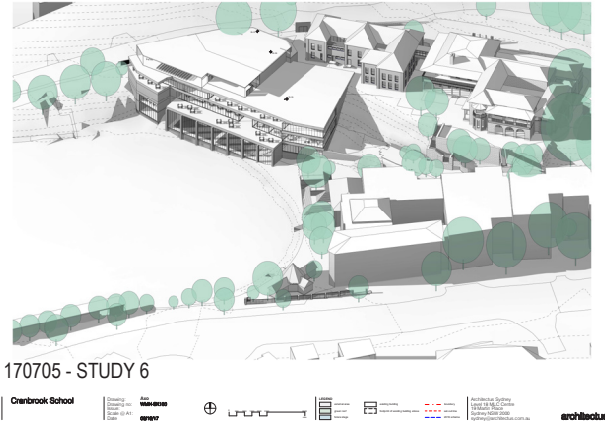
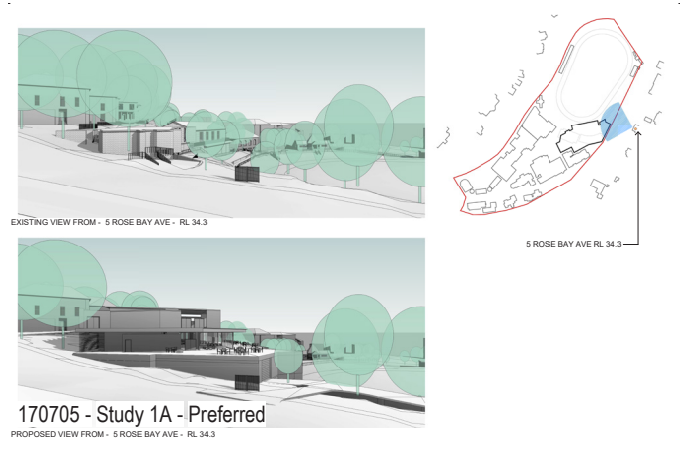
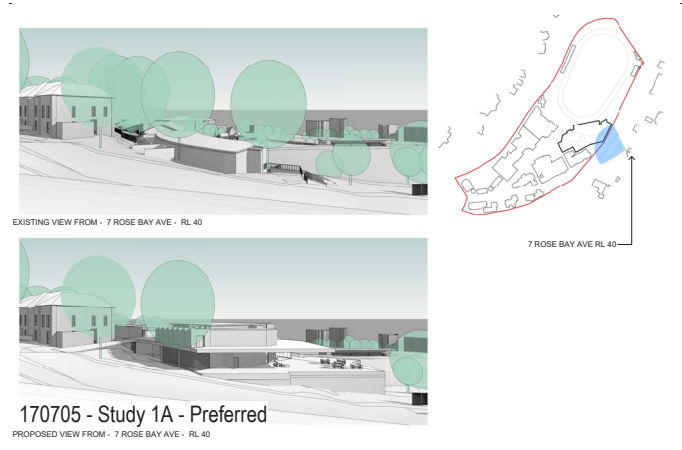
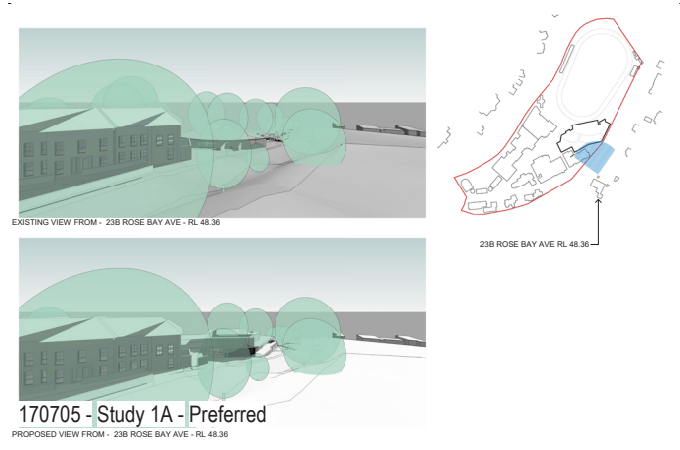
Design option with theatre basement level



Design option covered canopy between chapel and Perkins building



Design Response





## Design Response

### 2.18.2 Visual Impact Studies

Through rigorous testing of each architectural study we assessed the height, density, bulk and scale and setbacks in relation to the neighbouring buildings, streetscape and existing topography to minimise any negative impacts.

The neighbours which are most likely to have any negative impact were tested these were:

- 23b Rose Bay Avenue
- 7 Rose Bay Avenue
- 5 Rose Bay Avenue

The design response in study 1A achieves a sensitive response to the massing and elevational treatment of the development. The preferred option for the Centenary Building places The Chapel delicately on the Heritage lawn and whilst the bulk of the building utilises the topography to conceal the mass The Chapel is celebrated as a single level pavilion building to be read in conjunction with the existing built form as viewed from the neighbours.

The new development seeks to enhance and celebrate the existing built form within the campus by being sympathetic to the heritage buildings and minimising the impact to the amenity and views of the neighbouring properties.











### 3 Community Integration

This Section describes the community consultation process the design team has undertaken so far.