

## CLIENT



## HEALTH INFRASTRUCTURE

## MANAGING CONTRACTOR



## PROJECT MANAGERS

CBRE

TEL 02 9333 3333

## ARCHITECT

BVN Architecture

TEL 02 8297 7200

## STRUCTURE / CIVIL

BONACCI

TEL 02 8247 8400

## FACADE / ESD

SURFACE DESIGN

TEL 02 9249 1400

## BCA / DDA

BLACKETT MAGUIRE + GOLDSMITH

TEL 02 9211 7777

## FIRE ENGINEERING

ARUP

TEL 02 9320 9320

## LANDSCAPE

ARCADIA

TEL 02 8571 2900

## MECHANICAL

FREDON AIR

TEL 02 9475 9400

## ELECTRICAL / COMMS

STAR ELECTRICAL

TEL 02 9708 7555

## HYDRAULIC

AXIS SERVICES GROUP

TEL 02 9708 5666

## FIRE SERVICES

FORCE FIRE

TEL 1300 667 704

## MEDICAL GAS

HOSLAB

TEL 02 9816 3555

## PNEUMATIC TUBES

LAMSON GROUP

TEL 02 9743 7322

## CLIENT NUMBER

NHR

## PROJECT

NEPEAN

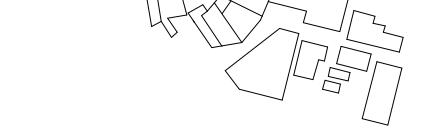
DERBY ST

KINGSWOOD NSW 2747

BVN PROJECT NUMBER

S1607004.INH

## DRAWING KEY



## GRAPHIC SCALE

0 2000 5000

## SCALE

1:2000/81

## STATUS

DO NOT SCALE

## SCHEMATIC DESIGN

DRAWING

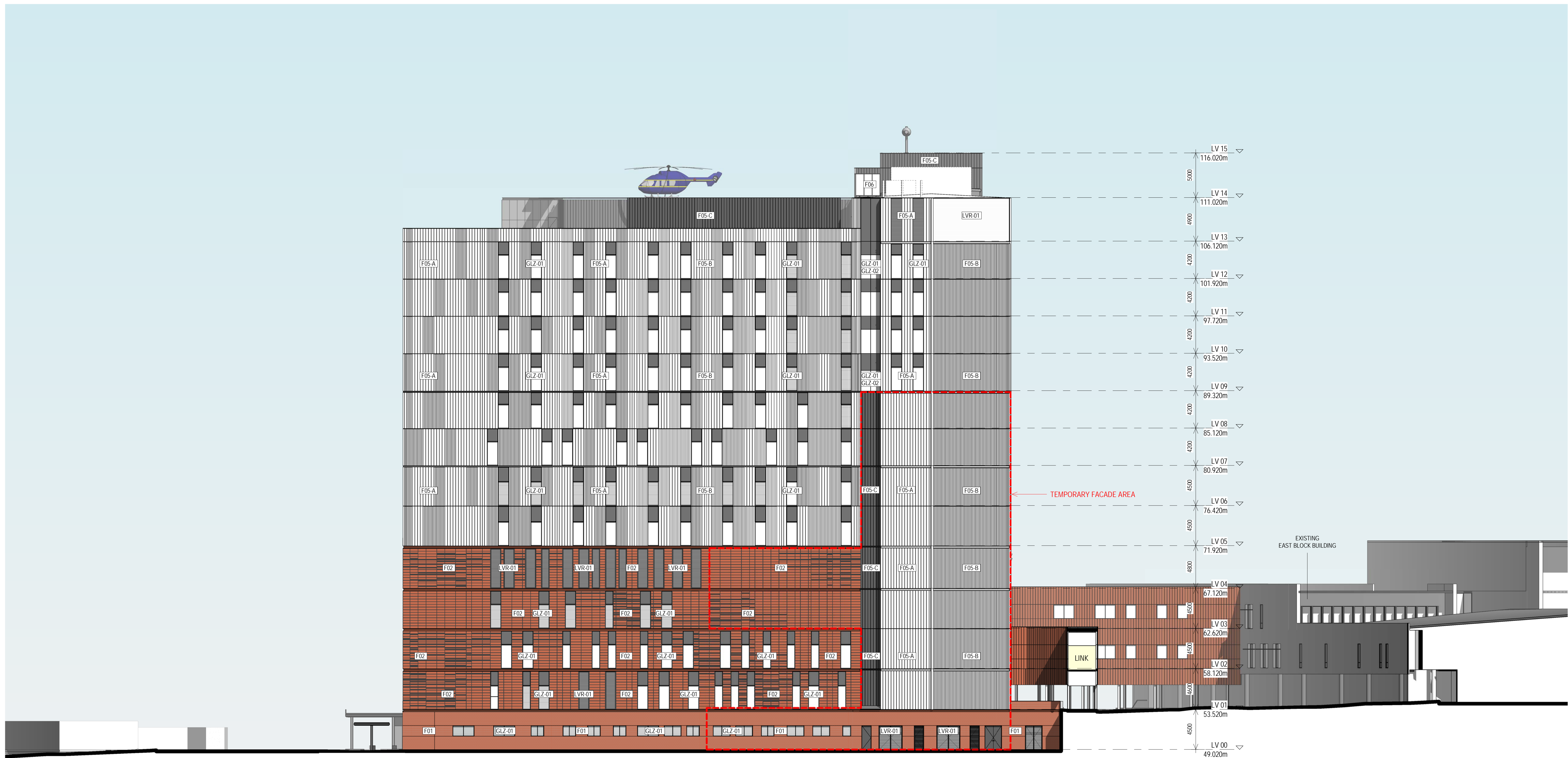
## ELEVATIONS - WEST -

OPTION 2

## ISSUE

A0 - 305

A



WEST ELEVATION - OPTION 2

## FACADE TYPES

- F01** - Brick - Natural masonry / brick system complete with steel shelf angles, weep holes and cavity flashing. Fixed to steel stud façade wall providing cladding support & air / weather seal. Provide 40% of the total brick façade area treated with textured brickwork pattern (via either/or brick coursing, format/orientation of units, colour)
- F02** - Terracotta – Terracotta ventilated rainscreen façade, supported on proprietary carrier system fixed to steel stud façade wall providing cladding support & air / weather seal. Provide 40% of the total Terracotta façade area treated with textured tile pattern (via either/or tile coursing, format/orientation of units, colour)
- F04** - Temporary Façade – Façade to be removed in part or completely, depending on requirements, at the completion of the proposed future works interfacing with Stage 1. Temporary façade to ensure acoustic, fire, thermal, weather, infection protection & separation to enable clinical functions to continue unimpeded throughout the construction phase.

- F05** - Substrate on Steel Frame prefinished metal cladding. Mixture of "Profile" and "Flat" metal cladding. Refer to elevations for extent of scope of cladding types & colour.  
**F05-A:** Prefinished "Flat" metal cladding - White (Dominion or similar)  
**F05-B:** Prefinished "Profiled" metal cladding - White (Longline or similar)  
**F05-C:** Prefinished "Flat" metal cladding - Dark Grey (Dominion or similar)  
**F05-D:** Prefinished "Profiled" metal cladding - Dark Grey (Longline or similar)

- F06** - Shopfront glazing system with automatic sliding door supported back to Steel Frame. Clear glazing.

## GLAZING TYPES

- GLZ-01** - Transparent glazing, clear.  
**GLZ-02** - Colourback glazing.

## LOUVRE TYPES

- LVR-01** Horizontal Metal Louvres – Single stage storm-proof continuous louver with concealed fixing.