

6.2 PIER 2/3 WEST ELEVATION

The western elevation of Pier 3 provides the 'public' face of Pier 2/3. The existing building has an alternating pattern of solid panels and cargo doors at ground level, and a solid wall to the upper shed where there were originally cargo doors.

The following facade interventions are proposed:

- Cargo doors on the lower floor are to remain operable. Openable portions of glazing are to be installed to the full extent of the openings connecting the interior to the public domain.
- Three new steel framed balconies with associated stairs are proposed in front of the primary public spaces to provide access and access.
- On the upper level the proposal opens up alternate facade bays to respect the checkerboard rhythm of the building. In some locations the new openings are screened with louvres adapted from the existing sidings to mimic the solidity of the existing facade to provide privacy and sun shading.
- A new steel framed glazed lift is proposed to the north to provide access to the ACO Office and Function Space.

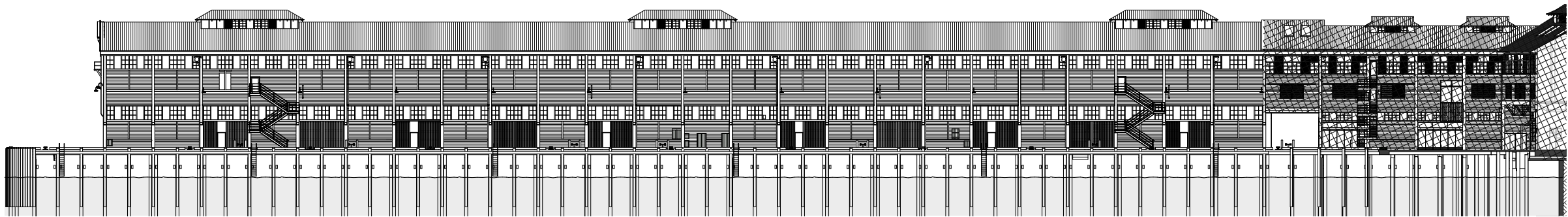


Figure 107: Existing west elevation Pier 2/3.

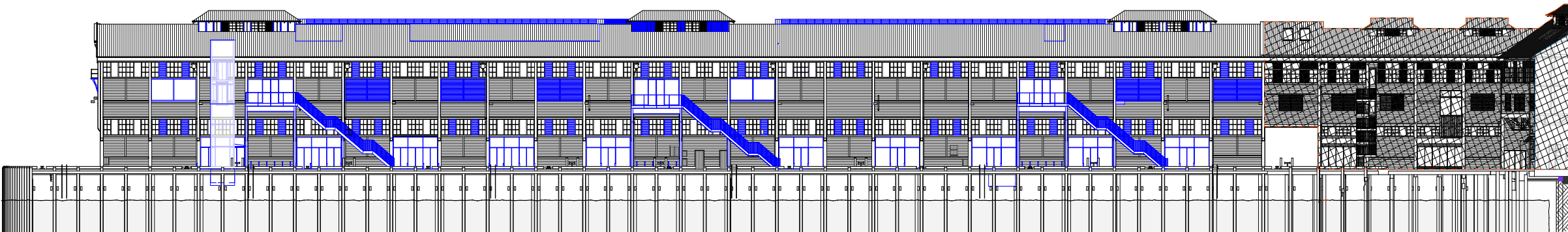


Figure 108: Proposed west elevation Pier 2/3, (alterations shown in blue).

### 6.3 WHARF 4/5 EAST ELEVATION

Alterations to the facade of Wharf 4/5 relate to the internal works associated with both the Walsh Bay Arts Precinct and STC50 projects.

At the lower level the following works are proposed:

- Removal of the existing steel framed glazed lift shaft near the Shore Sheds to open up the vista to the Precinct and Harbour beyond from the breezeway, which forms the primary gateway to the site.
- At Sydney Dance Company the facade is proposed to be modified at the Cafe and Board Room to better activate the Waterfront Square. New glazed doors are also proposed to the cargo doors at Studio 5.
- Bangarra Dance Theatre and the Choirs offices will have new glazing in the alternate bays of sliding cargo doors, opening up their foyers to the Wharf 4 apron.
- Two new steel framed glazed lifts are proposed to connect the Wharf apron to the Sydney Theatre Company located in the upper shed.
- Two new steel framed gantry balconies and stairs are also proposed. These elements will be detailed in a similar manner to those on Pier 2/3.



Figure 109: Existing East elevation Wharf 4/5.

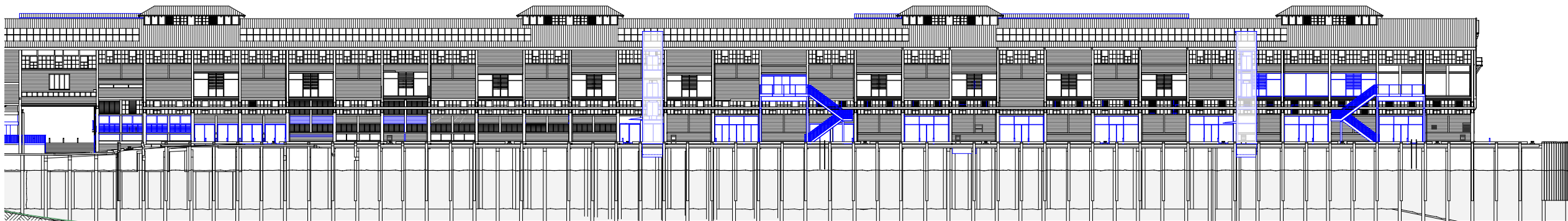


Figure 110: Proposed East elevation Wharf 4/5, (alterations shown in blue).

6.4 WHARF 4/5 WEST ELEVATION

The works proposed to the western facade of Wharf 4/5, associated with STC50, are:

- New steel framed egress stairs.
- New steel framed glazed lift.
- BCA upgrades to the western balcony at Level 1 involving new compliant steel framed balustrade.
- New openings for egress doors and windows on Level 1 to the STC central foyer.
- Modification to southern curved stair to provide egress from the SDC offices.

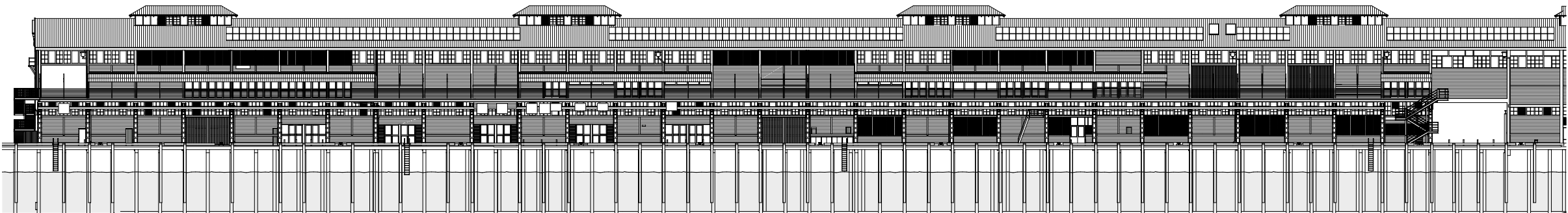


Figure 111: Existing West elevation Wharf 4/5.

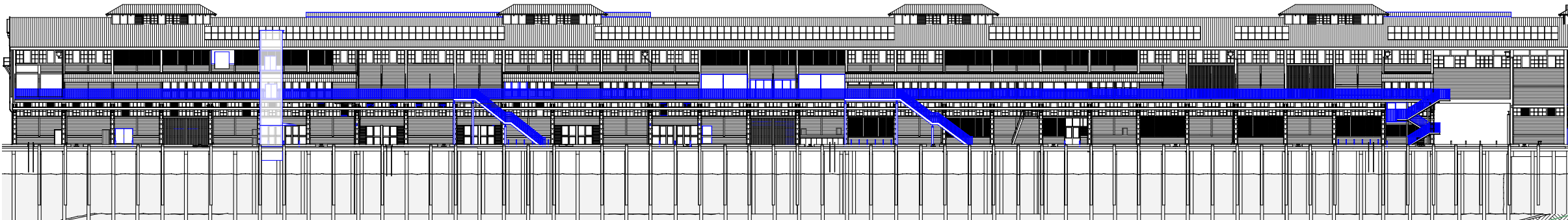


Figure 112: Proposed West elevation Wharf 4/5, (alterations shown in blue).

6.5 PIER 2/3 NORTH ELEVATION

Three new openings are proposed to the northern elevation of Pier 2/3. At the Upper Level, the central two bays will be replaced with glazing, providing harbour views from the function space.

At the Lower Level, the north eastern corner is opened up and replaced with glazing, interpreting the former Colonnade which once extended to this end of the building.



Figure 113: Existing north elevation Pier 2/3.



Figure 114: Existing north elevation Pier 2/3.

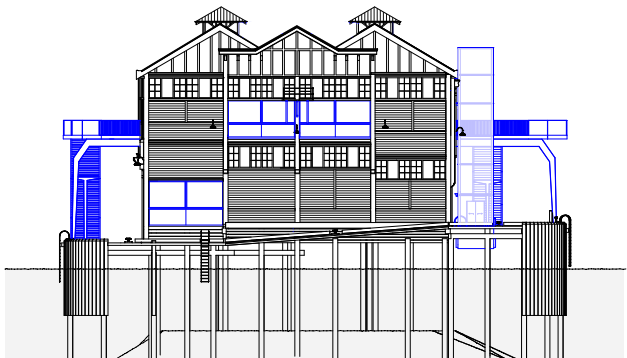


Figure 115: Proposed north elevation Pier 2/3, (alterations shown in blue).

6.6 WHARF 4/5 NORTH ELEVATION

The northern elevation of Wharf 4/5 has already been significantly altered at the upper level. The central bays at the lower level will be replaced with glazing to provide access to, and outlook from, Bangarra’s Function Space.

The curved egress stairs and metal enclosure over the grease arrestor are proposed to be removed as part of the works. This will reveal the northern end of the building once more.



Figure 116: Existing north elevation Wharf 4/5.

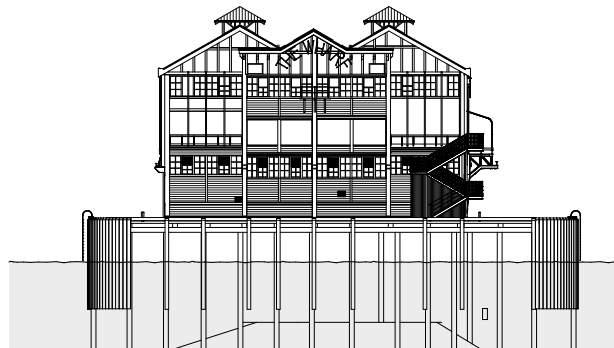


Figure 117: Existing north elevation Wharf 4/5.

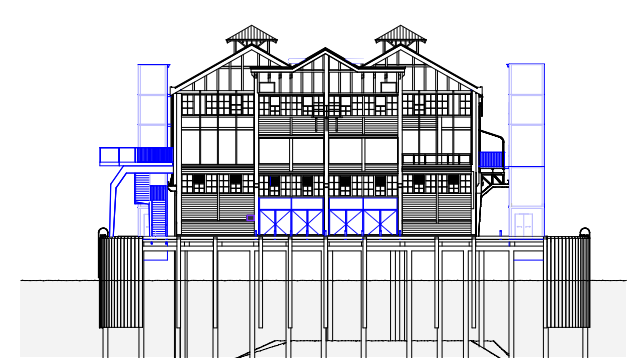


Figure 118: Proposed north elevation Wharf 4/5, (alterations shown in blue).