

KEY PLAN			
REV	DESCRIPTION	DN	DATE
1	Issue for Coordination	NT	26.07.17
2	Changes included for coordination	NT	21.08.17
3	Issue for Tender	NT	15.09.17
4	Issue for Tender	NT	26.09.17
5	Document number and title block updated	GS	20.06.2018
6	ISSUED FOR CROWN CERTIFICATE	MS	20.06.2018
7	Correct Certificate 2, for MC Review	MS	21.08.2018
8	Issued for Crown Certificate 2	MS	07.09.2018
9	Progress Issue - for information	MS	26.10.2018
10	Issued for information	TP	05.07.2019



Planning,
Industry &
Environment

Issued under the Environmental Planning and Assessment Act 1979

Approved Section: 4.55 (1A) Application No: SSD-8647-Mod-2

Granted On: 25 July 2019

Signed *[Signature]*

Sheet No: 1 of 13

COPYRIGHT

ALL RIGHTS RESERVED. THIS WORK IS COPYRIGHT AND CANNOT BE REPRODUCED OR COPIED IN ANY FORM OR BY ANY MEANS (GRAPHIC, ELECTRONIC OR MECHANICAL INCLUDING PHOTOCOPYING WITHOUT THE WRITTEN PERMISSION OF THE PRINCIPAL UNDER THE TERMS OF THE CONTRACT. ANY LICENCE, EXPRESS OR IMPLIED, TO USE THE DOCUMENT FOR ANY PURPOSE WHATSOEVER IS RESTRICTED TO THE TERMS OF THE AGREEMENT OR IMPLIED AGREEMENT WITH THE PRINCIPAL UNDER THE TERMS OF THE CONTRACT.

DIMENSIONS

USE FIGURED DIMENSIONS. DO NOT SCALE. CONTRACTORS MUST VERIFY ALL DIMENSIONS ON THE SITE BEFORE COMMENCING ANY WORK OR MAKING ANY SHOP DRAWING WHICH MUST BE SUBMITTED AND REVIEWED BEFORE MANUFACTURE.

FIXTURES, FITTINGS & EQUIPMENT SPECIFICATIONS
SUBSTITUTE FIRE EQUIPMENT SPECIFICATIONS
THE FIT OUT DESIGN AND DOCUMENTATION HAS BEEN COMPLETED ON THE BASIS OF FIRE AND EQUIPMENT ADVISED TO THIS OFFICE AT THE TIME OF BRIEFING THE DESIGN. THE DESIGN PROVIDES FOR FIRE AND EQUIPMENT INCORPORATES SPATIAL ALLOCATIONS, SERVICES, LOADING AND ACCESS CLEARANCES AND WHERE APPROPRIATE SERVICES REQUIREMENTS. MAKING DUE REGARD FOR SURROUNDING FIXTURES AND FITTINGS. IT SHOULD BE NOTED THAT SUBSTITUTE FIRE OR EQUIPMENT WITH ALTERNATE SPECIFICATIONS SHOULD NOT BE PROVIDED PRIOR TO VALIDATING THOSE SPECIFICATIONS AGAINST THE ITEM CONTROL SCHEDULE AND DESIGN PROVISIONS IN THE MODEL. THIS OFFICE ACCEPTS NO RESPONSIBILITY FOR THE PROCUREMENT OF SUBSTITUTE FIRE AND EQUIPMENT WHICH HAS NOT BEEN REVIEWED AND VALIDATED AGAINST THE ORIGINAL DESIGN PROVISIONS.

SERVICE POINTS DISCLAIMER
THE SERVICE POINTS IDENTIFIED ON THESE DRAWINGS HAVE BEEN OVERLAPED FROM THE BUILDING SERVICES ENGINEERING MODEL, AND ARE PROVIDED FOR INFORMATION AND SET-OUT PURPOSES ONLY. WE HAVE BEEN ADVISED BY THE SERVICES ENGINEER THAT THE POINTS REPRESENTED ON THESE DRAWINGS ARE CORRECT AT THE TIME OF PUBLICATION. THIS OFFICE DOES NOT WARRANT THE ACCURACY OF THIS DATA. REFER TO THE BUILDING SERVICES ENGINEERING DOCUMENTATION FOR THE INSTALLATION OF THE SERVICES POINTS AND THE INTERFACE BETWEEN THE SERVICES POINTS AND THE RESPECTIVE ENGINEERING SYSTEMS.

ISSUED FOR INFORMATION

ARCHITECTS



ARC: 01 124 470 800
LEVEL 4 88 YORK STREET
SYDNEY NSW 2000 AUSTRALIA
PH: (02) 8298 4600 FAX: (02) 9885 2455

THIS ARCHITECTURAL DESIGN IS THE COPYRIGHT OF
SILVER THOMAS WATKINS AUSTRALIA PTY LTD AR02 124 470 800
AND SHALL NOT BE REPRODUCED WITHOUT THEIR WRITTEN PERMISSION
CLIENT



Health
Infrastructure



PROJECT

**HORNSBY KU-RING-GAI
HOSPITAL STAGE 2**

Palmerston Road
HORNSBY NSW 2077

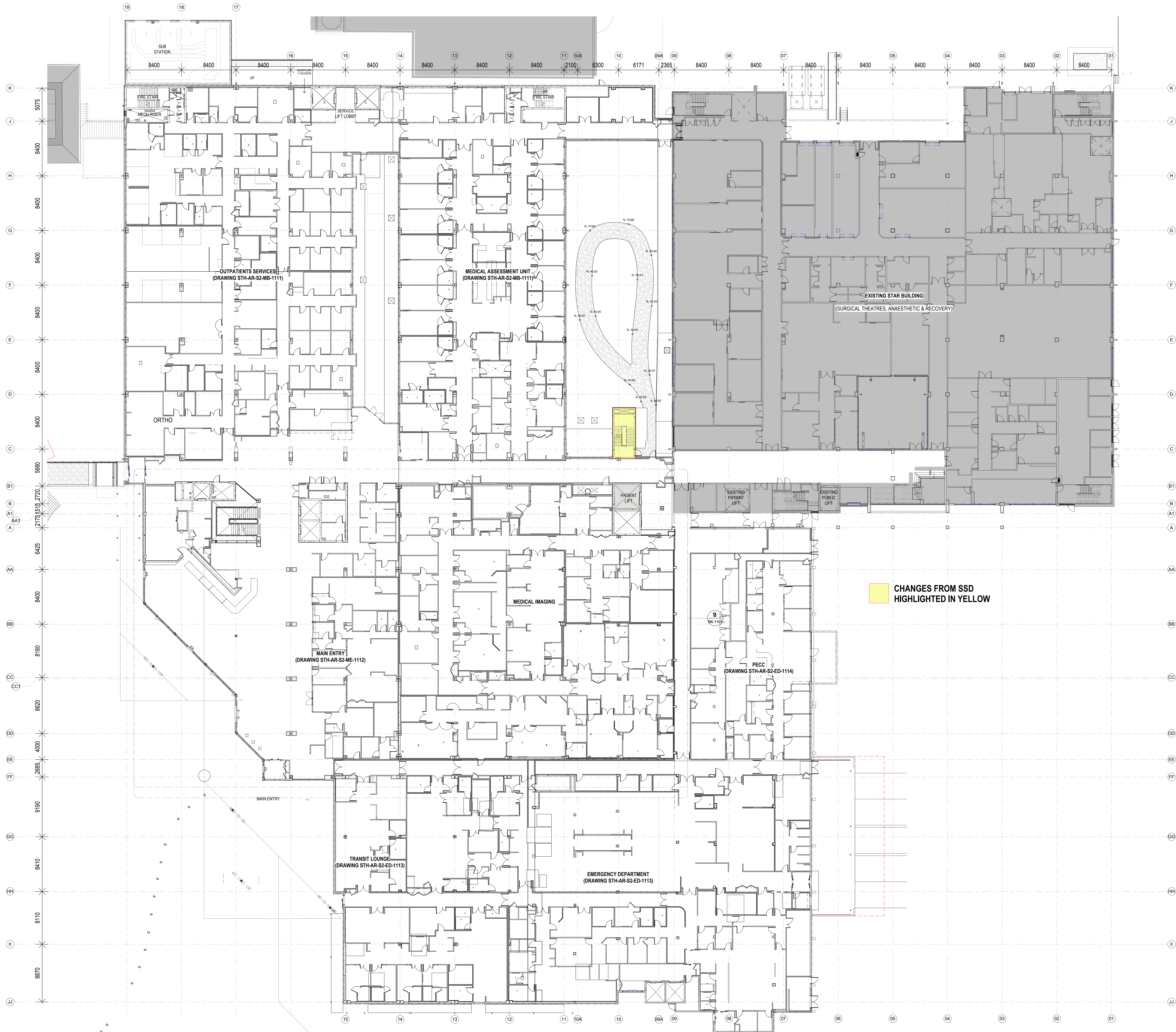
DRAWING TITLE

**LEVEL 0
OVERALL PLAN**

SCALE DATE DRAWN BY CHECKED
1: 200@A0 20/04/18 GS NP

PROJECT No DRAWING No REVISION

10390 ARC-DNG-20-001 8



CHANGES FROM SSD
HIGHLIGHTED IN YELLOW

KEY PLAN		DERBY ROAD	
SUBJECT STREET			
Z			
REV	DESCRIPTION	DN	DATE
1	Document number and title block updated	GS	20/04/2018
2	New location of the courtyard fire stair & lift	hsh	20/05/2018
3	Issued for Construction Certificate	MS	22/06/2018
4	Crown Certificate 2 - For MC Review	MS	21/08/2018
5	Issued for Crown Certificate	MS	07/09/2018
6	Progress Issue - For Information	MS	26/10/2018
7	Issued for Information	TP	05/07/2019



Planning,
Industry &
Environment

Issued under the Environmental Planning and Assessment Act 1979

Approved Section: 4.55 (1A) Application No: SSD-8647-Mod-2

Granted On: 25 July 2019

Signed: *[Signature]*

Sheet No: 2 of 13

COPYRIGHT

ALL RIGHTS RESERVED. THIS WORK IS COPYRIGHT AND CANNOT BE REPRODUCED OR COPIED IN ANY FORM OR BY ANY MEANS (GRAPHIC, ELECTRONIC OR MECHANICAL INCLUDING PHOTOCOPYING WITHOUT THE WRITTEN PERMISSION OF THE PRINCIPAL UNDER THE TERMS OF THE CONTRACT. ANY LICENCE, EXPRESS OR IMPLIED, TO USE THE DOCUMENT FOR ANY PURPOSE WHATSOEVER IS RESTRICTED TO THE TERMS OF THE AGREEMENT OR IMPLIED AGREEMENT WITH THE PRINCIPAL UNDER THE TERMS OF THE CONTRACT.

DIMENSIONS

USE FIGURED DIMENSIONS. DIMENSIONAL CONTRACTORS MUST VERIFY ALL DIMENSIONS ON THE SITE BEFORE COMMENCING ANY WORK OR MAKING ANY SHOP DRAWING WHICH MUST BE SUBMITTED AND REVIEWED BEFORE MANUFACTURE.

FIXTURES, FITTINGS & EQUIPMENT SPECIFICATIONS

SUBSTITUTE FIRE EQUIPMENT SPECIFICATIONS
THE FIRE OUT DESIGN AND DOCUMENTATION HAS BEEN COMPLETED ON THE BASIS OF FIRE AND EQUIPMENT ADVISED TO THIS OFFICE AT THE TIME OF BRIEFING THE DESIGN. THE DESIGN PROVIDES FOR FIRE AND EQUIPMENT INCORPORATES SPATIAL ALLOCATIONS, SERVICES, LOADING AND ACCESS CLEARANCES AND WHERE APPROPRIATE SERVICE REQUIREMENTS. MAKING OUR REQUEST FOR SUBSTITUTION, FIXTURES AND FITTINGS. IT SHOULD BE NOTED THAT SUBSTITUTE FIRE OR EQUIPMENT WITH ALTERNATE SPECIFICATIONS SHOULD NOT BE PROVIDED PRIOR TO VALIDATING THOSE SPECIFICATIONS AGAINST THE ITEM CONTROL SCHEDULE AND DESIGN PROVISIONS IN THE MODEL. THIS OFFICE ACCEPTS NO RESPONSIBILITY FOR THE PROCUREMENT OF SUBSTITUTE FIRE AND EQUIPMENT WHICH HAS NOT BEEN REVIEWED AND VALIDATED AGAINST THE ORIGINAL DESIGN PROVISIONS.

SERVICE POINTS DISCLAIMER
THE SERVICE POINTS IDENTIFIED ON THESE DRAWINGS HAVE BEEN OVERLAPED FROM THE BUILDING SERVICES ENGINEERING MODEL, AND ARE PROVIDED FOR INFORMATION AND SET-OUT PURPOSES ONLY. WE HAVE BEEN ADVISED BY THE SERVICES ENGINEERS THAT THE POINTS REPRESENTED ON THESE DRAWINGS ARE CORRECT AT THE TIME OF PUBLICATION. THIS OFFICE DOES NOT WARRANT THE ACCURACY OF THIS DATA. REFER TO THE BUILDING SERVICES ENGINEERING DOCUMENTATION FOR THE INSTALLATION OF THE SERVICE POINTS AND THE INTERFACE BETWEEN THE SERVICE POINTS AND THE RESPECTIVE ENGINEERING SYSTEMS.

ISSUED FOR INFORMATION

ARCHITECTS



ANU: 01 124 470 800
LEVEL 4, 88 YORK STREET
SYDNEY NSW 2000, AUSTRALIA
PH: (02) 8294 4800 FAX: (02) 9885 2455

THIS ARCHITECTURAL DESIGN IS THE COPYRIGHT OF
SERVICES ENGINEERING AUSTRALIA PTY LTD (ARST) 124 470 800
AND SHALL NOT BE REPRODUCED WITHOUT THEIR WRITTEN PERMISSION
CLIENT



PROJECT

**HORNSBY KU-RING-GAI
HOSPITAL STAGE 2**

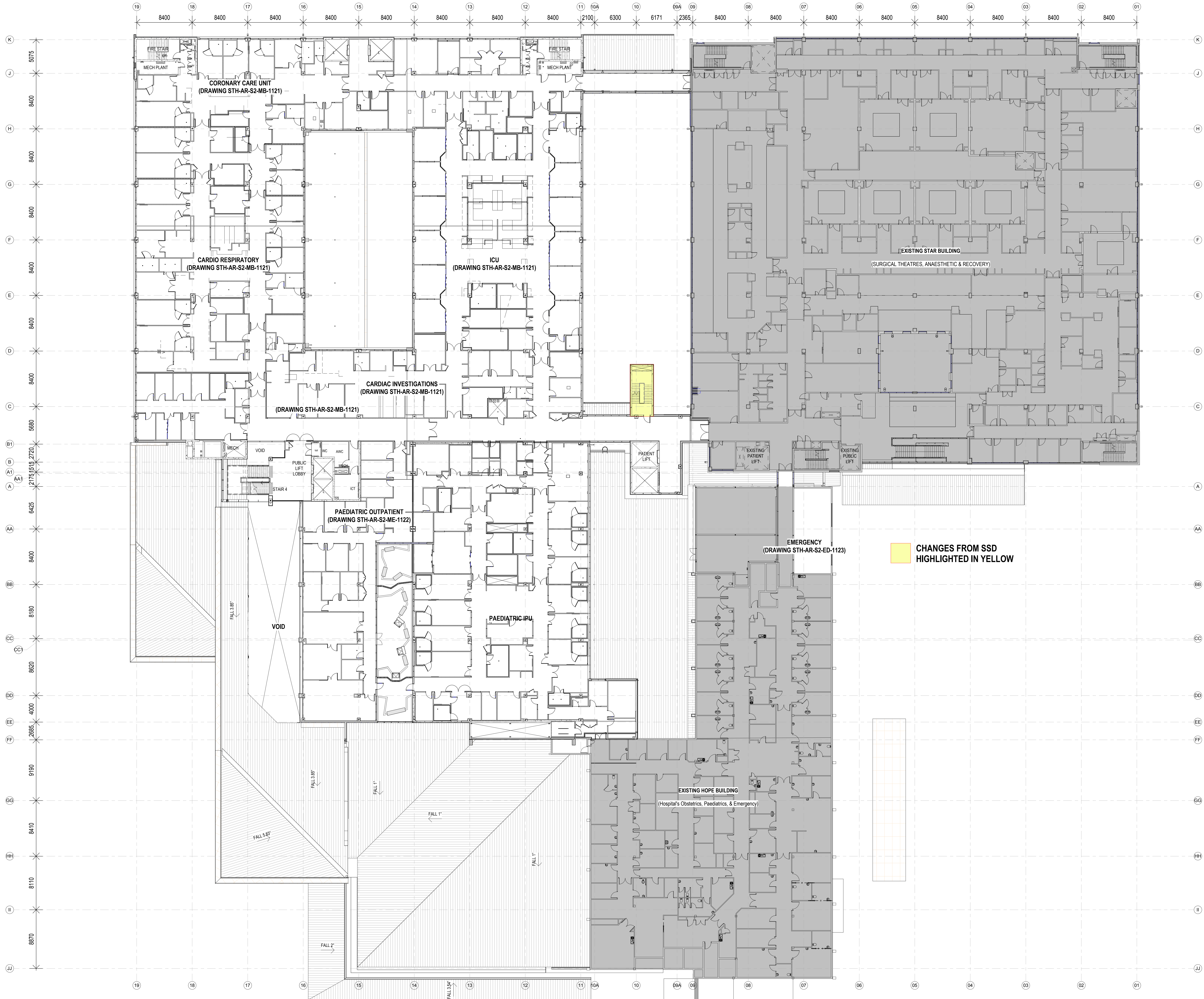
Palmerston Road
HORNSBY NSW 2077

DRAWING TITLE

**LEVEL 1
OVERALL PLAN**

SCALE: 1:200@A0 DATE: 20/04/18 DRAWN BY: GS CHECKED: NP

PROJECT No: 10390 ARC-DNG-20-101 DRAWING No: 2 OF 13 REVISION: 5



REV		DESCRIPTION	DRN	DATE
1	Issue for coordination	NT	NT	20.07.17
2	Changes checked for coordination	NT	NT	21.08.17
3	Issue for Tender	NT	NT	15.09.17
4	Document number and title block updated	GS	GS	20.09.2018
5	ISSUED FOR CROWN CERTIFICATE	MS	MS	20.06.2018
6	Crown Certificate 2 - For MC Review	MS	MS	11.08.2018
7	Issued for Crown Certificate 2	MS	MS	07.09.2018
8	Program Issue - For Information	MS	MS	29.11.2018
9	Issued for Information	MS	MS	23.11.2018
10	Issued for Information	TP	TP	05.07.2019



Planning,
Industry &
Environment

Issued under the Environmental Planning and Assessment Act 1979

Approved Section: 4.55 (1A) Application No: SSD-8647-Mod-2

Granted On: 25 July 2019

Signed: *[Signature]*

Sheet No: 3 of 13

COPYRIGHT

ALL RIGHTS RESERVED. THIS WORK IS COPYRIGHT AND CANNOT BE REPRODUCED OR COPIED IN ANY FORM OR BY ANY MEANS (GRAPHIC, ELECTRONIC OR MECHANICAL INCLUDING PHOTOCOPYING WITHOUT THE WRITTEN PERMISSION OF THE PRINCIPAL UNDER THE TERMS OF THE CONTRACT. ANY LICENCE, EXPRESS OR IMPLIED, TO USE THE DOCUMENT FOR ANY PURPOSE WHATSOEVER IS RESTRICTED TO THE TERMS OF THE AGREEMENT OR IMPLIED AGREEMENT WITH THE PRINCIPAL UNDER THE TERMS OF THE CONTRACT.

DIMENSIONS

USE FIGURED DIMENSIONS. DIMENSIONAL CONTRACTORS MUST VERIFY ALL DIMENSIONS ON THE SITE BEFORE COMMENCING ANY WORK OR MAKING ANY SHOP DRAWING WHICH MUST BE SUBMITTED AND REVIEWED BEFORE MANUFACTURE.

FIXTURES, FITTINGS & EQUIPMENT SPECIFICATIONS
SUBSTITUTE FIRE EQUIPMENT SPECIFICATIONS
THE FIRE OUT DESIGN AND DOCUMENTATION HAS BEEN COMPLETED ON THE BASIS OF FIRE AND EQUIPMENT ADVISED TO THIS OFFICE AT THE TIME OF BRIEFING THE DESIGN. THE DESIGN PROVIDES FOR FIRE AND EQUIPMENT INCORPORATES SPATIAL ALLOCATIONS, SERVICES, LOADING AND ACCESS CLEARANCES AND WHERE APPROPRIATE SERVICES REQUIREMENTS, HAVING DUE REGARD FOR SURROUNDING PATTERNS AND FITTINGS. IT SHOULD BE NOTED THAT SUBSTITUTE FIRE EQUIPMENT WITH ALTERNATE SPECIFICATIONS SHOULD NOT BE PROVIDED PRIOR TO VALIDATING THOSE SPECIFICATIONS AGAINST THE ITEM CONTROL SCHEDULE AND DESIGN PROVISIONS IN THE MODEL. THIS OFFICE ACCEPTS NO RESPONSIBILITY FOR THE PROCUREMENT OF SUBSTITUTE FIRE AND EQUIPMENT WHICH HAS NOT BEEN REVIEWED AND VALIDATED AGAINST THE ORIGINAL DESIGN PROVISIONS.

SERVICE POINTS DISCLAIMER
THE SERVICE POINTS IDENTIFIED ON THESE DRAWINGS HAVE BEEN OVERLAPPED FROM THE BUILDING SERVICES ENGINEERING MODEL, AND ARE PROVIDED FOR INFORMATION AND SET-OUT PURPOSES ONLY. WE HAVE BEEN ADVISED BY THE SERVICES ENGINEERS THAT THE POINTS REPRESENTED ON THESE DRAWINGS ARE CORRECT AT THE TIME OF PUBLICATION. THIS OFFICE DOES NOT WARRANT THE ACCURACY OF THIS DATA. REFER TO THE BUILDING SERVICES ENGINEERING DOCUMENTATION FOR THE INSTALLATION OF THE SERVICE POINTS AND THE INTERFACE BETWEEN THE SERVICE POINTS AND THE RESPECTIVE ENGINEERING SYSTEMS.

ISSUED FOR INFORMATION

ARCHITECTS



AND: 11 D'ALBY RD
LEVEL 4, 88 YORK STREET
SYDNEY NSW 2000, AUSTRALIA
PH: (02) 8298 4600 FAX: (02) 9885 2455

THIS ARCHITECTURAL DESIGN IS THE COPYRIGHT OF
SERVICES ENGINEERING AUSTRALIA PTY LTD (ASST) 11 D'ALBY RD
AND SHALL NOT BE REPRODUCED WITHOUT THEIR WRITTEN PERMISSION
CLIENT



Health
Infrastructure
WATPAC

PROJECT

**HORNSBY KU-RING-GAI
HOSPITAL STAGE 2**

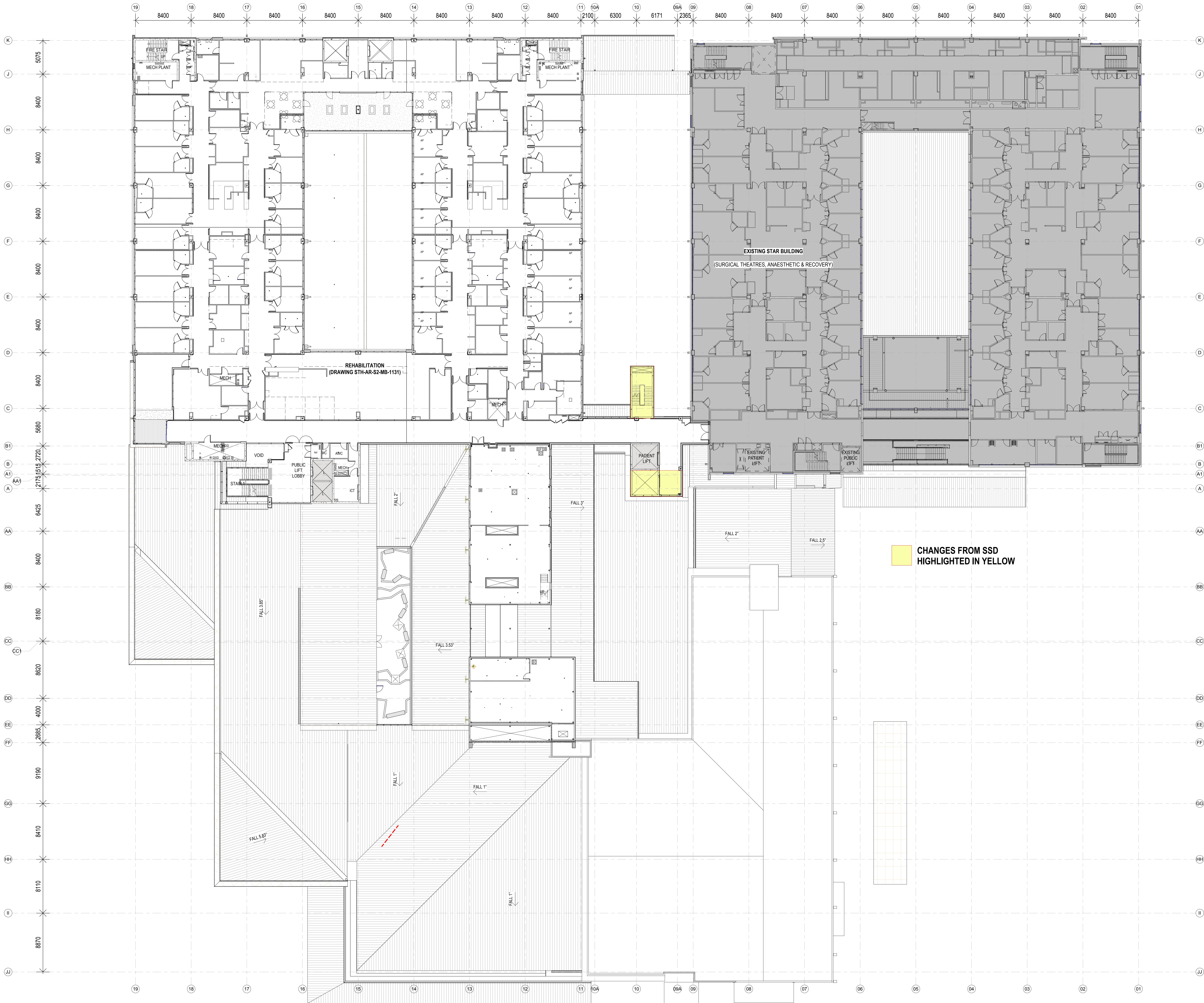
Palmerston Road
HORNSBY NSW 2077

DRAWING TITLE

**LEVEL 2
OVERALL PLAN**

SCALE: 1:200@A0 DATE: 20/04/18 DRAWN BY: GS CHECKED: NP

PROJECT No: 10390 ARC-DNG-20-201 DRAWING No: 9



KEY PLAN		DERBY ROAD	
Z		BARNETT STREET	
REV	DESCRIPTION	DN	DATE
1	Issue for coordination	NT	26.07.17
2	Changes checked for coordination	NT	21.08.17
3	Issue for Tender	NT	15.09.17
4	Document number and title block updated	NT	26.09.17
5	ISSUED FOR CROWN CERTIFICATE	MS	20.06.2018
6	Crown Certificate 2 - For AC Review	MS	10.08.2018
7	Issued for Crown Certificate 2	MS	07.09.2018
8	Progress Issue - For Information	MS	26.10.2018
9	Issued for Information	TP	05.07.2019



Planning,
Industry &
Environment

Issued under the Environmental Planning and Assessment Act 1979

Approved Section: 4.55(1A) Application No: SSD-8647-Mod-2

Granted On: 25 July 2019

Signed *[Signature]*

Sheet No: 4 of 13

COPYRIGHT

ALL RIGHTS RESERVED. THIS WORK IS COPYRIGHT AND CANNOT BE REPRODUCED OR COPIED IN ANY FORM OR BY ANY MEANS (GRAPHIC, ELECTRONIC OR MECHANICAL INCLUDING PHOTOCOPYING WITHOUT THE WRITTEN PERMISSION OF THE PRINCIPAL UNDER THE TERMS OF THE CONTRACT. ANY LICENCE, EXPRESS OR IMPLIED, TO USE THE DOCUMENT FOR ANY PURPOSE WHATSOEVER IS RESTRICTED TO THE TERMS OF THE AGREEMENT OR IMPLIED AGREEMENT WITH THE PRINCIPAL UNDER THE TERMS OF THE CONTRACT.

DIMENSIONS

USE FIGURED DIMENSIONS. DO NOT SCALE. CONTRACTORS MUST VERIFY ALL DIMENSIONS ON THE SITE BEFORE COMMENCING ANY WORK OR MAKING ANY SHOP DRAWING WHICH MUST BE SUBMITTED AND REVIEWED BEFORE MANUFACTURE.

FIXTURES, FITTINGS & EQUIPMENT SPECIFICATIONS

SUBSTITUTE FIRE EQUIPMENT SPECIFICATIONS
THE FIRE OUT DESIGN AND DOCUMENTATION HAS BEEN COMPLETED ON THE BASIS OF FIRE AND EQUIPMENT ADVISED TO THIS OFFICE AT THE TIME OF BRIEFING THE DESIGN. THE DESIGN PROVIDES FOR FIRE AND EQUIPMENT INCORPORATES SPATIAL ALLOCATIONS, SERVICES, LOADING AND ACCESS CLEARANCES AND WHERE APPROPRIATE SERVICE REQUIREMENTS. HAVING OUR REGARD FOR SUBSTITUTED FIXTURES AND FITTINGS, IT SHOULD BE NOTED THAT SUBSTITUTE FIRE OR EQUIPMENT WITH ALTERNATE SPECIFICATIONS SHOULD NOT BE PROCURED PRIOR TO VALIDATING THOSE SPECIFICATIONS AGAINST THE ITEM CONTROL SCHEDULE AND DESIGN PROVISIONS IN THE MODEL. THIS OFFICE ACCEPTS NO RESPONSIBILITY FOR THE PROCUREMENT OF SUBSTITUTE FIRE AND EQUIPMENT WHICH HAS NOT BEEN REVIEWED AND VALIDATED AGAINST THE ORIGINAL DESIGN PROVISIONS.

SERVICE POINTS DISCLAIMER

THE SERVICE POINTS IDENTIFIED ON THESE DRAWINGS HAVE BEEN OVERLAPED FROM THE BUILDING SERVICES ENGINEERING MODEL, AND ARE PROVIDED FOR INFORMATION AND SET-OUT PURPOSES ONLY. WE HAVE BEEN ADVISED BY THE SERVICES ENGINEERS THAT THE POINTS REPRESENTED ON THESE DRAWINGS ARE CORRECT AT THE TIME OF PUBLICATION. THIS OFFICE DOES NOT WARRANT THE ACCURACY OF THIS DATA. REFER TO THE BUILDING SERVICES ENGINEERING DOCUMENTATION FOR THE INSTALLATION OF THE SERVICES POINTS AND THE INTERFACE BETWEEN THE SERVICES POINTS AND THE RESPECTIVE ENGINEERING SYSTEMS.

ISSUED FOR INFORMATION

ARCHITECTS



ARC 01/24/03 802
LEVEL 4 88 YORK STREET
SYDNEY 1505 2005 AUSTRALIA
PH: (02) 8298 4600 FAX: (02) 9885 2455

THIS ARCHITECTURAL DESIGN IS THE COPYRIGHT OF
SAULIER THOMAS HANLEY AUSTRALIA PTY LTD AR02/21/24/03/805
AND SHALL NOT BE REPRODUCED WITHOUT THEIR WRITTEN PERMISSION
CLIENT



Health
Infrastructure



PROJECT

**HORNSBY KU-RING-GAI
HOSPITAL STAGE 2**

Palmerston Road
HORNSBY NSW 2077

DRAWING TITLE

**LEVEL 3
OVERALL PLAN**

SCALE DATE DRAWN BY CHECKED
1: 200@A0 20/04/18 GS NP

PROJECT No DRAWING No REVISION

10390 ARC-DNG-20-301 8



CHANGES FROM SSD
HIGHLIGHTED IN YELLOW

REV		DESCRIPTION	DN	DATE
1	Issue for coordination	NT	NT	26.07.17
2	Changes checked for coordination	NT	NT	21.08.17
3	Issue for Tender	NT	NT	15.09.17
4	Document number and title block updated	NT	NT	26.09.17
5	ISSUED FOR CROWN CERTIFICATE	MS	MS	20.06.2018
6	Correct Certificate 2, for AC Review	MS	MS	11.08.2018
7	Issued for Crown Certificate 2	MS	MS	07.09.2018
8	Program Issue - for information	MS	MS	26.10.2018
9	Issued for information	TP	TP	05.07.2019



Planning,
Industry &
Environment

Issued under the Environmental Planning and Assessment Act 1979

Approved Section: 4.55 (1A) Application No: SSD-8647-Mod-2

Granted On: 25 July 2019 Signed: *[Signature]*

Sheet No: 5 of 13

COPYRIGHT

ALL RIGHTS RESERVED. THIS WORK IS COPYRIGHT AND CANNOT BE REPRODUCED OR COPIED IN ANY FORM OR BY ANY MEANS (GRAPHIC, ELECTRONIC OR MECHANICAL INCLUDING PHOTOCOPYING WITHOUT THE WRITTEN PERMISSION OF THE PRINCIPAL UNDER THE TERMS OF THE CONTRACT. ANY LICENCE, EXPRESS OR IMPLIED, TO USE THE DOCUMENT FOR ANY PURPOSE WHATSOEVER IS RESTRICTED TO THE TERMS OF THE AGREEMENT OR IMPLIED AGREEMENT WITH THE PRINCIPAL UNDER THE TERMS OF THE CONTRACT.

DIMENSIONS

USE FIGURED DIMENSIONS. DIMENSIONAL CONTRACTORS MUST VERIFY ALL DIMENSIONS ON THE SITE BEFORE COMMENCING ANY WORK OR MAKING ANY SHOP DRAWING WHICH MUST BE SUBMITTED AND REVIEWED BEFORE MANUFACTURE.

FIXTURES, FITTINGS & EQUIPMENT SPECIFICATIONS
SUBSTITUTE FIRE EQUIPMENT SPECIFICATIONS
THE FIRE OUT DESIGN AND DOCUMENTATION HAS BEEN COMPLETED ON THE BASIS OF FIRE AND EQUIPMENT ADVISED TO THIS OFFICE AT THE TIME OF BRIEFING THE DESIGN. THE DESIGN PROVIDES FOR FIRE AND EQUIPMENT INCORPORATES SPATIAL ALLOCATIONS, SERVICES, LOADING AND ACCESS CLEARANCES AND WHERE APPROPRIATE SERVICE REQUIREMENTS, HAVING DUE REGARD FOR SURROUNDING FIXTURES AND FITTINGS. IT SHOULD BE NOTED THAT SUBSTITUTE FIRE OR EQUIPMENT WITH ALTERNATE SPECIFICATIONS SHOULD NOT BE PROVIDED PRIOR TO VALIDATING THOSE SPECIFICATIONS AGAINST THE ITEM CONTROL SCHEDULE AND DESIGN PROVISIONS IN THE MODEL. THIS OFFICE ACCEPTS NO RESPONSIBILITY FOR THE PROCUREMENT OF SUBSTITUTE FIRE AND EQUIPMENT WHICH HAS NOT BEEN REVIEWED AND VALIDATED AGAINST THE ORIGINAL DESIGN PROVISIONS.

SERVICE POINTS DISCLAIMER
THE SERVICE POINTS IDENTIFIED ON THESE DRAWINGS HAVE BEEN OVERLAPED FROM THE BUILDING SERVICES ENGINEERING MODEL, AND ARE PROVIDED FOR INFORMATION AND SET-OUT PURPOSES ONLY. WE HAVE BEEN ADVISED BY THE SERVICES ENGINEERS THAT THE POINTS REPRESENTED ON THESE DRAWINGS ARE CORRECT AT THE TIME OF PUBLICATION. THIS OFFICE DOES NOT WARRANT THE ACCURACY OF THIS DATA. REFER TO THE BUILDING SERVICES ENGINEERING DOCUMENTATION FOR THE INSTALLATION OF THE SERVICE POINTS AND THE INTERFACE BETWEEN THE SERVICE POINTS AND THE RESPECTIVE ENGINEERING SYSTEMS.

ISSUED FOR INFORMATION

ARCHITECTS



ARC 101 10A-010 100
LEVEL 4 88 YORK STREET
SYDNEY NSW 2000 AUSTRALIA
PH: (02) 8298 4600 FAX: (02) 9885 2455

THIS ARCHITECTURAL DESIGN IS THE COPYRIGHT OF
SAVER THOMAS WATKINS AUSTRALIA PTY LTD ARB 21 124 476 005
AND SHALL NOT BE REPRODUCED WITHOUT THEIR WRITTEN PERMISSION
CLIENT



PROJECT

**HORNSBY KU-RING-GAI
HOSPITAL STAGE 2**

Palmerston Road
HORNSBY NSW 2077

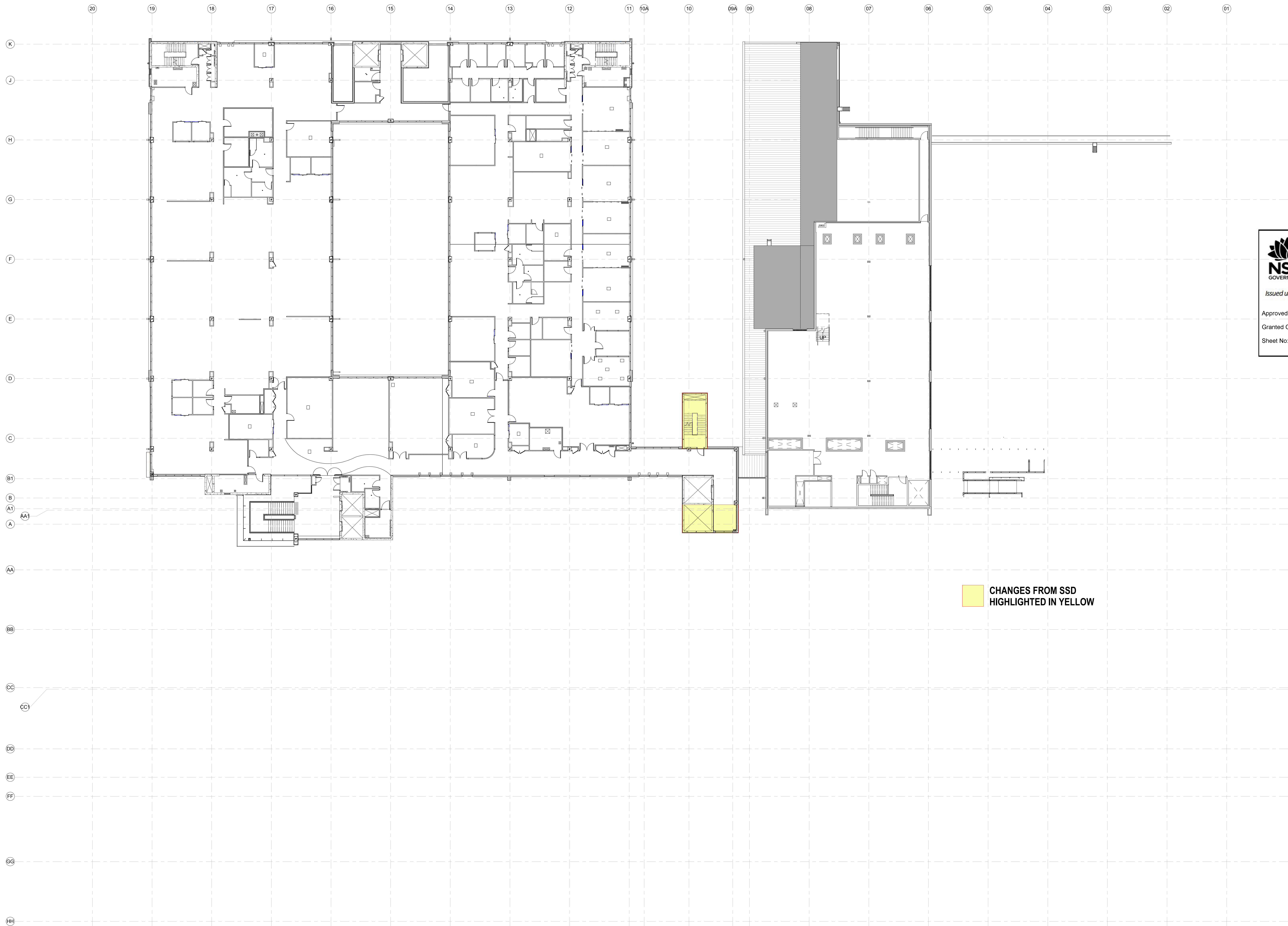
DRAWING TITLE

**LEVEL 4
OVERALL PLAN**

SCALE: 1:200 DATE: 20/04/18 DRAWN BY: GS CHECKED: NP

PROJECT No: 10390 ARC-DNG-20-401

DRAWING No: 8



CHANGES FROM SSD
HIGHLIGHTED IN YELLOW

KEY PLAN		DERBY ROAD	
Z		BARRETT STREET	
REV	DESCRIPTION	DN	DATE
1	Issue for coordination	NT	26.07.17
2	Changes clouded for coordination	NT	21.08.17
3	Issue for TENDER	NT	15.09.17
4	Issue for Tender	NT	26.09.17
5	Document number and title block updated	GS	20.06.2018
6	ISSUED FOR CROWN CERTIFICATE	MS	20.06.2018
7	Correct Certificate 2, for MC Review	MS	11.08.2018
8	Issued for Crown Certificate 2	MS	07.09.2018
9	Progress Issue - For Information	MS	26.11.2018
10	Issued for Information	TP	05.07.2019



Planning,
Industry &
Environment

Issued under the Environmental Planning and Assessment Act 1979

Approved Section: 4.55(1A) Application No: SSD-B647-Mod-2

Granted On: 25 July 2019

Signed: *[Signature]*

Sheet No: 6 of 13

COPYRIGHT

ALL RIGHTS RESERVED. THIS WORK IS COPYRIGHT AND CANNOT BE REPRODUCED OR COPIED IN ANY FORM OR BY ANY MEANS (GRAPHIC, ELECTRONIC OR MECHANICAL INCLUDING PHOTOCOPYING WITHOUT THE WRITTEN PERMISSION OF THE PRINCIPAL UNDER THE TERMS OF THE CONTRACT. ANY LICENCE, EXPRESS OR IMPLIED, TO USE THE DOCUMENT FOR ANY PURPOSE WHATSOEVER IS RESTRICTED TO THE TERMS OF THE AGREEMENT OR IMPLIED AGREEMENT WITH THE PRINCIPAL UNDER THE TERMS OF THE CONTRACT.

DIMENSIONS

USE FIGURED DIMENSIONS. DIMENSIONAL CONTRACTORS MUST VERIFY ALL DIMENSIONS ON THE SITE BEFORE COMMENCING ANY WORK OR MAKING ANY SHOP DRAWING WHICH MUST BE SUBMITTED AND REVIEWED BEFORE MANUFACTURE.

FIXTURES, FITTINGS & EQUIPMENT SPECIFICATIONS

SUBSTITUTE FIRE EQUIPMENT SPECIFICATIONS
THE FIRE OUT DESIGN AND DOCUMENTATION HAS BEEN COMPLETED ON THE BASIS OF FIRE AND EQUIPMENT ADVISED TO THIS OFFICE AT THE TIME OF BRIEFING THE DESIGN. THE DESIGN PROVIDES FOR FIRE AND EQUIPMENT INCORPORATES SPATIAL ALLOCATIONS, SERVICES, LOADING AND ACCESS CLEARANCES AND WHERE APPROPRIATE SERVICES REQUIREMENTS, HAVING DUE REGARD FOR SURROUNDING FIXTURES AND FITTINGS. IT SHOULD BE NOTED THAT SUBSTITUTE FIRE OR EQUIPMENT WITH ALTERNATE SPECIFICATIONS SHOULD NOT BE PROCEEDED PRIOR TO VALIDATING THOSE SPECIFICATIONS AGAINST THE ITEM CONTROL SCHEDULE AND DESIGN PROVISIONS IN THE MODEL. THIS OFFICE ACCEPTS NO RESPONSIBILITY FOR THE PROCUREMENT OF SUBSTITUTE FIRE AND EQUIPMENT WHICH HAS NOT BEEN REVIEWED AND VALIDATED AGAINST THE ORIGINAL DESIGN PROVISIONS.

SERVICE POINTS DISCLAIMER

THE SERVICE POINTS IDENTIFIED ON THESE DRAWINGS HAVE BEEN OVERLAPPED FROM THE BUILDING SERVICES ENGINEERING MODEL, AND ARE PROVIDED FOR INFORMATION AND REF-CUT PURPOSES ONLY. WE HAVE BEEN ADVISED BY THE SERVICES ENGINEER THAT THE POINTS REPRESENTED ON THESE DRAWINGS ARE CORRECT AT THE TIME OF PUBLICATION. THIS OFFICE DOES NOT WARRANT THE ACCURACY OF THIS DATA. REFER TO THE BUILDING SERVICES ENGINEERING DOCUMENTATION FOR THE INSTALLATION OF THE SERVICE POINTS AND THE INTERFACE BETWEEN THE SERVICE POINTS AND THE RESPECTIVE ENGINEERING SYSTEMS.

ISSUED FOR INFORMATION

ARCHITECTS



ARC: 21/12/470 800
LEVEL 4 88 YORK STREET
SYDNEY NSW 2000 AUSTRALIA
PH: (02) 8298 4600 FAX: (02) 9885 2455

THIS ARCHITECTURAL DESIGN IS THE COPYRIGHT OF
SILVER THORN HAWLEY AUSTRALIA PTY LTD AR02/12/470 800
AND SHALL NOT BE REPRODUCED WITHOUT THEIR WRITTEN PERMISSION
CLIENT



Health
Infrastructure



PROJECT

**HORNSBY KU-RING-GAI
HOSPITAL STAGE 2**

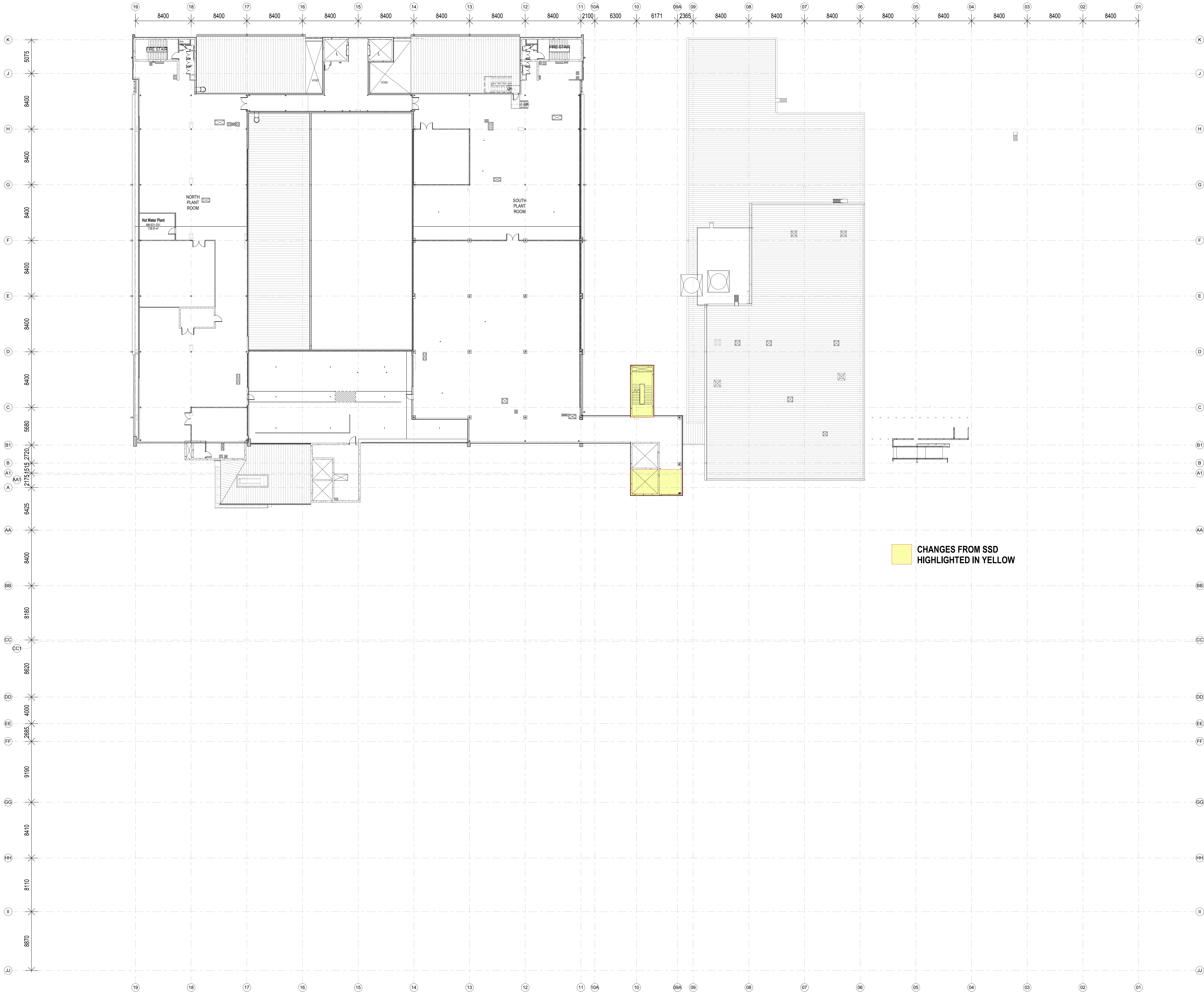
Palmerston Road
HORNSBY NSW 2077

DRAWING TITLE

**LEVEL 5
OVERALL PLAN**

SCALE: 1:200@A0 DATE: 20/04/18 DRAWN BY: GS CHECKED: NP

PROJECT No: 10390 DRAWING No: ARC-DNG-20-501 REVISION: 8



REV		DESCRIPTION	DN	DATE
1	Issue for coordination	NT	26.07.17	
2	Changes checked for coordination	NT	21.08.17	
3	Issue for Tender	NT	15.09.17	
4	Issue for Tender	NT	26.09.17	
5	Document number and title block updated	GS	26.09.2018	
6	ISSUED FOR CROWN CERTIFICATE	MS	20.06.2018	
7	Crown Certificate 2 - For MC Review	MS	11.08.2018	
8	Issued for Crown Certificate 2	MS	07.09.2018	
9	Progress Issue - For Information	MS	26.10.2018	
10	Issued for Information	TP	05.07.2019	



Planning,
Industry &
Environment

Issued under the Environmental Planning and Assessment Act 1979

Approved Section: 4.55 (1A) Application No: SSD-8647-Mod-2

Granted On: 25 July 2019 Signed *[Signature]*

Sheet No: 7 of 13

COPYRIGHT

ALL RIGHTS RESERVED. THIS WORK IS COPYRIGHT AND CANNOT BE REPRODUCED OR COPIED IN ANY FORM OR BY ANY MEANS (GRAPHIC, ELECTRONIC OR MECHANICAL INCLUDING PHOTOCOPYING WITHOUT THE WRITTEN PERMISSION OF THE PRINCIPAL UNDER THE TERMS OF THE CONTRACT. ANY LICENCE, EXPRESS OR IMPLIED, TO USE THE DOCUMENT FOR ANY PURPOSE WHATSOEVER IS RESTRICTED TO THE TERMS OF THE AGREEMENT OR IMPLIED AGREEMENT WITH THE PRINCIPAL UNDER THE TERMS OF THE CONTRACT.

DIMENSIONS

USE FIGURED DIMENSIONS. DO NOT SCALE. CONTRACTORS MUST VERIFY ALL DIMENSIONS ON THE SITE BEFORE COMMENCING ANY WORK OR MAKING ANY SHOP DRAWING WHICH MUST BE SUBMITTED AND REVIEWED BEFORE MANUFACTURE.

FIXTURES, FITTINGS & EQUIPMENT SPECIFICATIONS

SUBSTITUTE FIRE EQUIPMENT SPECIFICATIONS
THE FIRE OUT DESIGN AND DOCUMENTATION HAS BEEN COMPLETED ON THE BASIS OF FIRE AND EQUIPMENT ADVISED TO THIS OFFICE AT THE TIME OF BRIEFING THE DESIGN. THE DESIGN PROVIDES FOR FIRE AND EQUIPMENT INCORPORATES SPATIAL ALLOCATIONS, SERVICES, LOADING AND ACCESS CLEARANCES AND WHERE APPROPRIATE SERVICE REQUIREMENTS. MAKING OUR RESEARCH FOR SUBSTITUTED FIXTURES AND FITTINGS. IT SHOULD BE NOTED THAT SUBSTITUTE FIRE OR EQUIPMENT WITH ALTERNATE SPECIFICATIONS SHOULD NOT BE PROVIDED PRIOR TO VALIDATING THOSE SPECIFICATIONS AGAINST THE ITEM CONTROL SCHEDULE AND DESIGN PROVISIONS IN THE MODEL. THIS OFFICE ACCEPTS NO RESPONSIBILITY FOR THE PROCUREMENT OF SUBSTITUTE FIRE AND EQUIPMENT WHICH HAS NOT BEEN REVIEWED AND VALIDATED AGAINST THE ORIGINAL DESIGN PROVISIONS.

SERVICE POINTS DISCLAIMER

THE SERVICE POINTS IDENTIFIED ON THESE DRAWINGS HAVE BEEN OVERLAPPED FROM THE BUILDING SERVICES ENGINEERING MODEL, AND ARE PROVIDED FOR INFORMATION AND SET-OUT PURPOSES ONLY. WE HAVE BEEN ADVISED BY THE SERVICES ENGINEERS THAT THE POINTS REPRESENTED ON THESE DRAWINGS ARE CORRECT AT THE TIME OF PUBLICATION. THIS OFFICE DOES NOT WARRANT THE ACCURACY OF THIS DATA. REFER TO THE BUILDING SERVICES ENGINEERING DOCUMENTATION FOR THE INSTALLATION OF THE SERVICE POINTS AND THE INTERFACE BETWEEN THE SERVICE POINTS AND THE RESPECTIVE ENGINEERING SYSTEMS.

ISSUED FOR INFORMATION

ARCHITECTS



ARC 101 (24-475) RD
LEVEL 4 88 YORK STREET
SYDNEY NSW 2000 AUSTRALIA
PH: (02) 8298 4600 FAX: (02) 9585 2455

THIS ARCHITECTURAL DESIGN IS THE COPYRIGHT OF
SAULUS THOMAS WARELEY AUSTRALIA PTY LTD ARB 21 (24-475) RD
AND SHALL NOT BE REPRODUCED WITHOUT THEIR WRITTEN PERMISSION
CLIENT



Health
Infrastructure



PROJECT

HORNSBY KU-RING-GAI
HOSPITAL STAGE 2

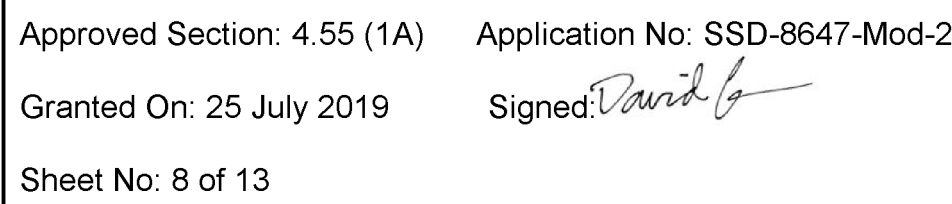
Palmerston Road
HORNSBY NSW 2077

DRAWING TITLE

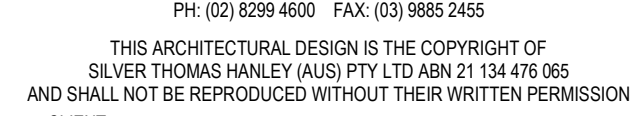
LEVEL 6
OVERALL PLAN

SCALE DATE DRAWN BY CHECKED
1: 200@A0 20/04/18 GS NP

PROJECT No DRAWING No REVISION
10390 ARC-DNG-20-601 8

[illegible]

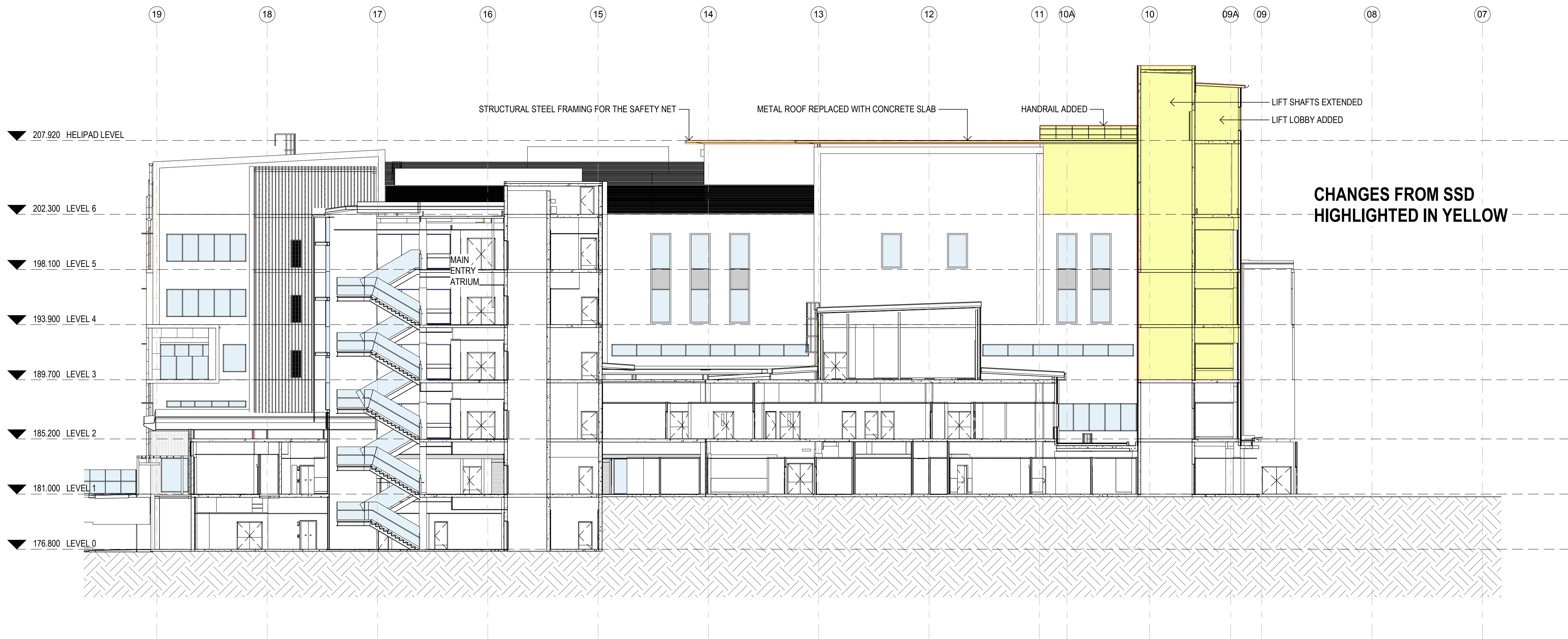
ISSUED FOR INFORMATION
ARCHITECTS _____



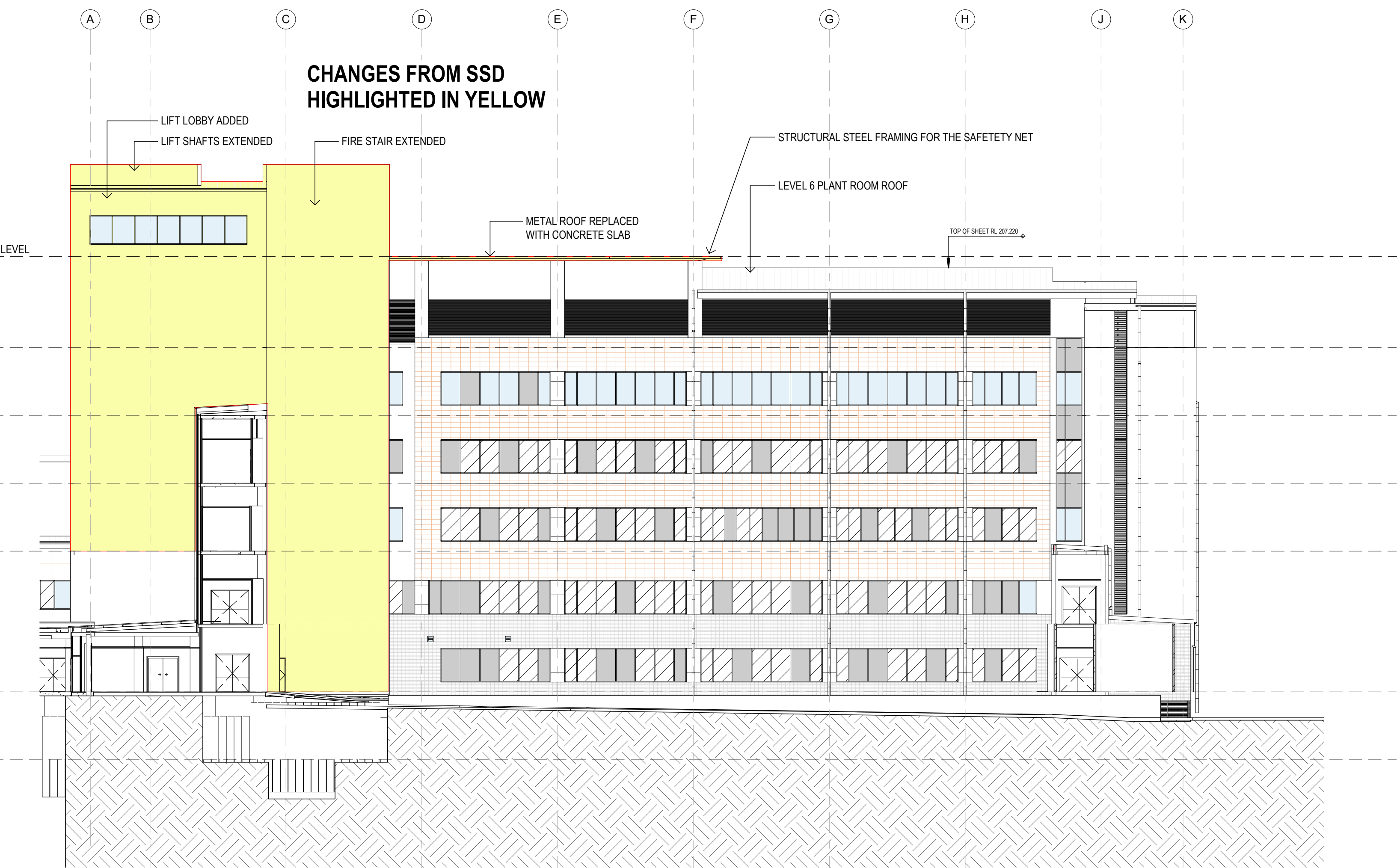
Palmerston Road
HORNSBY NSW 2077

SCALE 1:200@A0 DATE 20/04/18 DRAWN BY CJ

PROJECT No. — DRAWING No. — REVISION No. —
10390 ARC-DNG-49-001



A HELIPAD ELEVATION A
1:200



B HELIPAD ELEVATION B
1:200



1 HELIPAD PERSPECTIVE
SCALE:

KEY PLAN		DERBY ROAD	
Z		BARNETT STREET	
REV	DESCRIPTION	DN	DATE
1	Issued for information	CJ	06.09.2018
2	Issued for Approval	CJ	05.10.2018
3	Issued for information	MS	07.06.2019
4	Issued for information	MS	21.06.2019
5	Issued for information	MS	26.06.2019
6	Issued for information	KWTF	26.06.2019
7	Issued for information	MS	05.07.2019
8	Issued for information	TP	05.07.2019



Planning,
Industry &
Environment

Issued under the Environmental Planning and Assessment Act 1979

Approved Section: 4.55 (1A) Application No: SSD-B647-Mod-2

Granted On: 25 July 2019

Signed *[Signature]*

Sheet No: 9 of 13

COPYRIGHT
ALL RIGHTS RESERVED. THIS WORK IS COPYRIGHT AND CANNOT BE REPRODUCED OR COPIED IN ANY FORM OR BY ANY MEANS (GRAPHIC, ELECTRONIC OR MECHANICAL) INCLUDING PHOTOCOPYING WITHOUT THE WRITTEN PERMISSION OF THE PRINCIPAL UNDER THE TERMS OF THE CONTRACT. ANY LICENCE, EXPRESS OR IMPLIED, TO USE THE DOCUMENT FOR ANY PURPOSE WHATSOEVER IS RESTRICTED TO THE TERMS OF THE AGREEMENT OR IMPLIED AGREEMENT WITH THE PRINCIPAL UNDER THE TERMS OF THE CONTRACT.

DIMENSIONS
USE FIGURED DIMENSIONS. DIMENSIONAL CONTRACTORS MUST VERIFY ALL DIMENSIONS ON THE SITE BEFORE COMMENCING ANY WORK OR MAKING ANY SHOP DRAWING WHICH MUST BE SUBMITTED AND REVIEWED BEFORE MANUFACTURE.

FIXTURES, FITTINGS & EQUIPMENT SPECIFICATIONS
SUBSTITUTE FIRE EQUIPMENT SPECIFICATIONS
THE FIRE EQUIPMENT SPECIFICATIONS HAVE BEEN COMPLETED ON THE BASIS OF FIRE AND EQUIPMENT ADVISED TO THIS OFFICE AT THE TIME OF BRIEFING THE DESIGN. THE DESIGN PROVIDES FOR FIRE AND EQUIPMENT INCORPORATES SPATIAL ALLOCATIONS, SERVICES, LOADING AND ACCESS CLEARANCES AND WHERE APPROPRIATE SERVICES REQUIREMENTS, HAVING REGARDS FOR SURROUNDING FIXTURES AND FITTINGS. IT SHOULD BE NOTED THAT SUBSTITUTE FIRE OR EQUIPMENT WITH ALTERNATE SPECIFICATIONS SHOULD NOT BE PROVIDED PRIOR TO VALIDATING THOSE SPECIFICATIONS AGAINST THE ITEM CONTROL SCHEDULE AND DESIGN PROVISIONS IN THE MODEL. THIS OFFICE ACCEPTS NO RESPONSIBILITY FOR THE PROCUREMENT OF SUBSTITUTE FIRE AND EQUIPMENT WHICH HAS NOT BEEN REVIEWED AND VALIDATED AGAINST THE ORIGINAL DESIGN PROVISIONS.

SERVICE POINTS DISCLAIMER
THE SERVICE POINTS IDENTIFIED ON THESE DRAWINGS HAVE BEEN OVERLAYED FROM THE BUILDING SERVICES ENGINEERING MODEL, AND ARE PROVIDED FOR INFORMATION AND REF-CUT PURPOSES ONLY. WE HAVE BEEN ADVISED BY THE SERVICES ENGINEERS THAT THE POINTS REPRESENTED ON THESE DRAWINGS ARE CORRECT AT THE TIME OF PUBLICATION. THIS OFFICE DOES NOT WARRANT THE ACCURACY OF THIS DATA. REFER TO THE BUILDING SERVICES ENGINEERING DOCUMENTATION FOR THE INSTALLATION OF THE SERVICE POINTS AND THE INTERFACE BETWEEN THE SERVICE POINTS AND THE RESPECTIVE ENGINEERING SYSTEMS.

ISSUED FOR INFORMATION

ARCHITECTS



ARC 111 DA-470 802
LEVEL 4 88 YORK STREET
SYDNEY NSW 2000 AUSTRALIA
PH: (02) 8296 4600 FAX: (02) 9885 2455

THIS ARCHITECTURAL DESIGN IS THE COPYRIGHT OF
SERVICES THOMAS HANLEY AUSTRALIA PTY LTD ARB 21 DA-470 805
AND SHALL NOT BE REPRODUCED WITHOUT THEIR WRITTEN PERMISSION
CLIENT



Health
Infrastructure



PROJECT

**HORNSBY KU-RING-GAI
HOSPITAL STAGE 2**

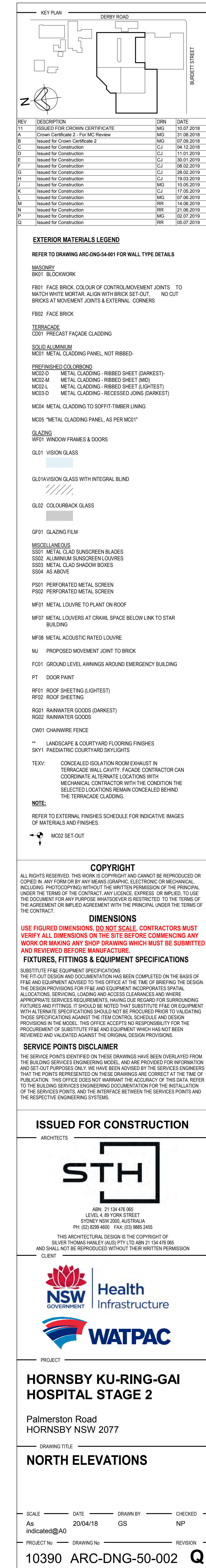
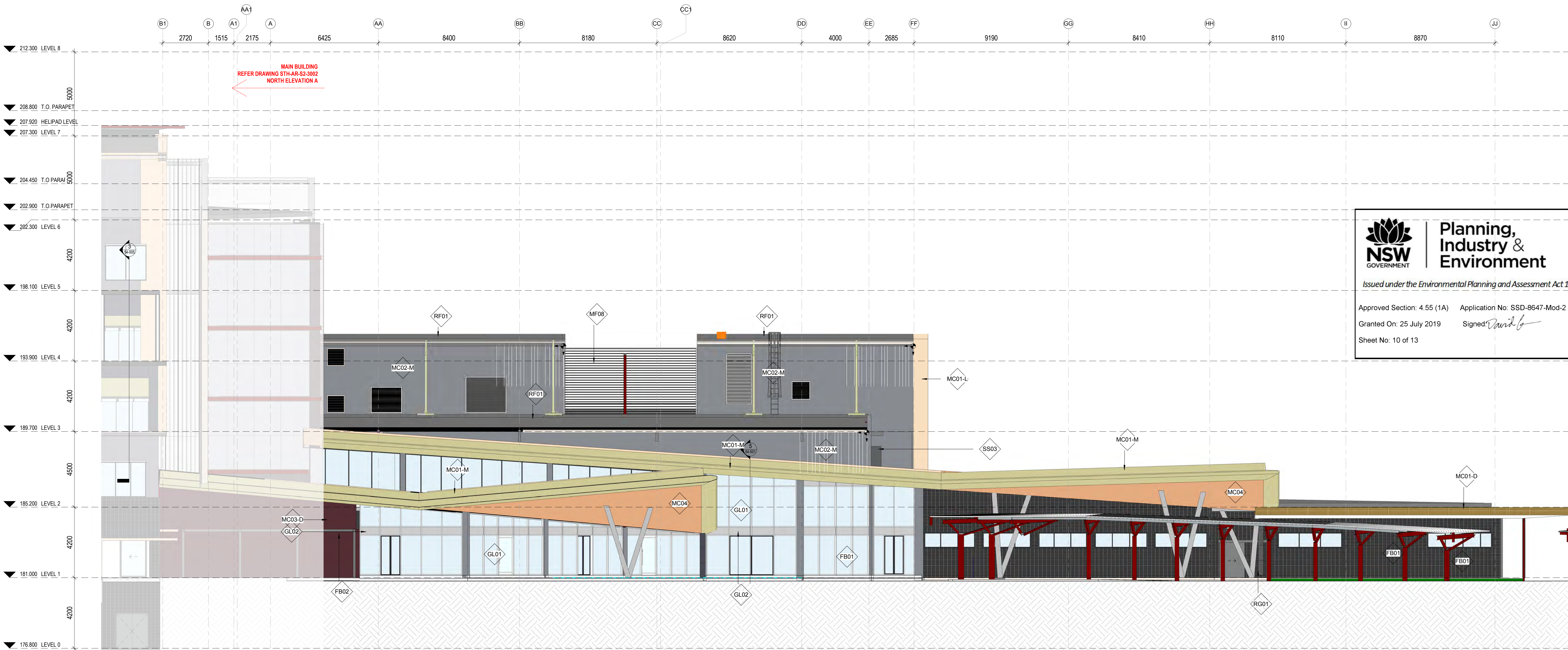
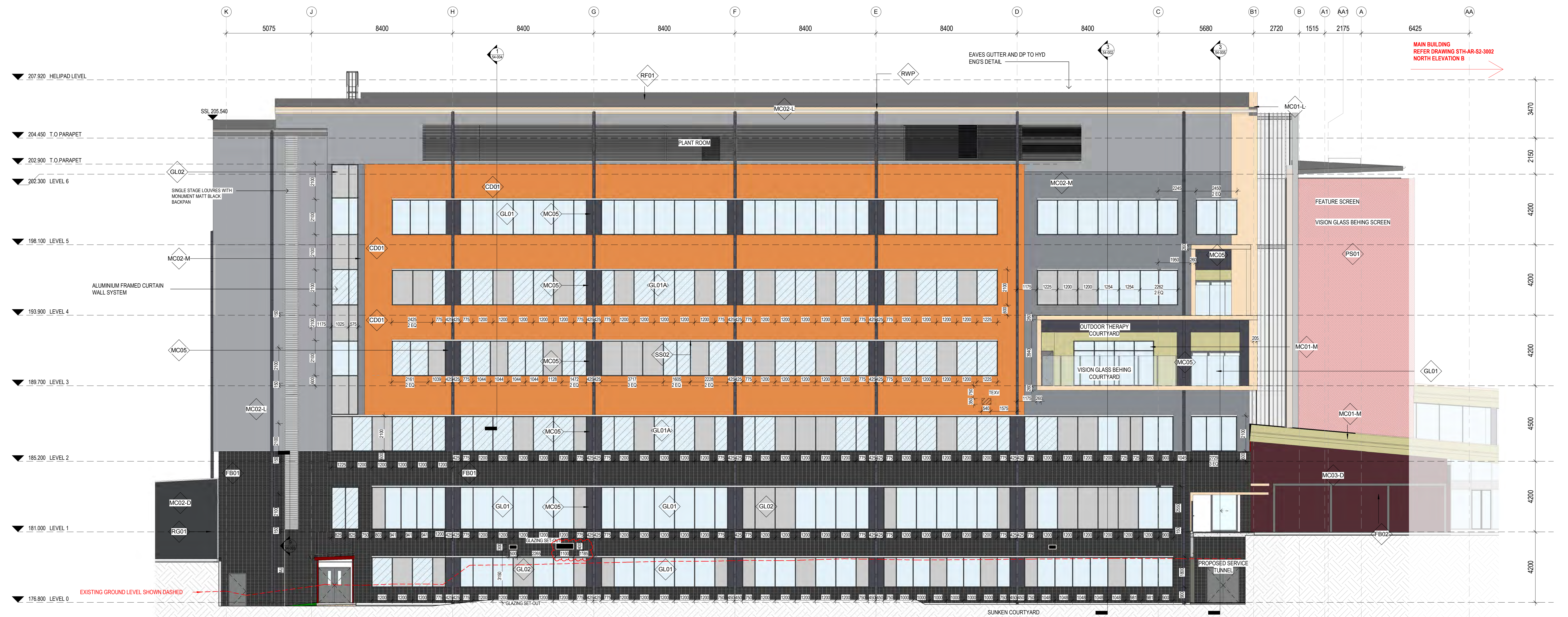
Palmerston Road
HORNSBY NSW 2077

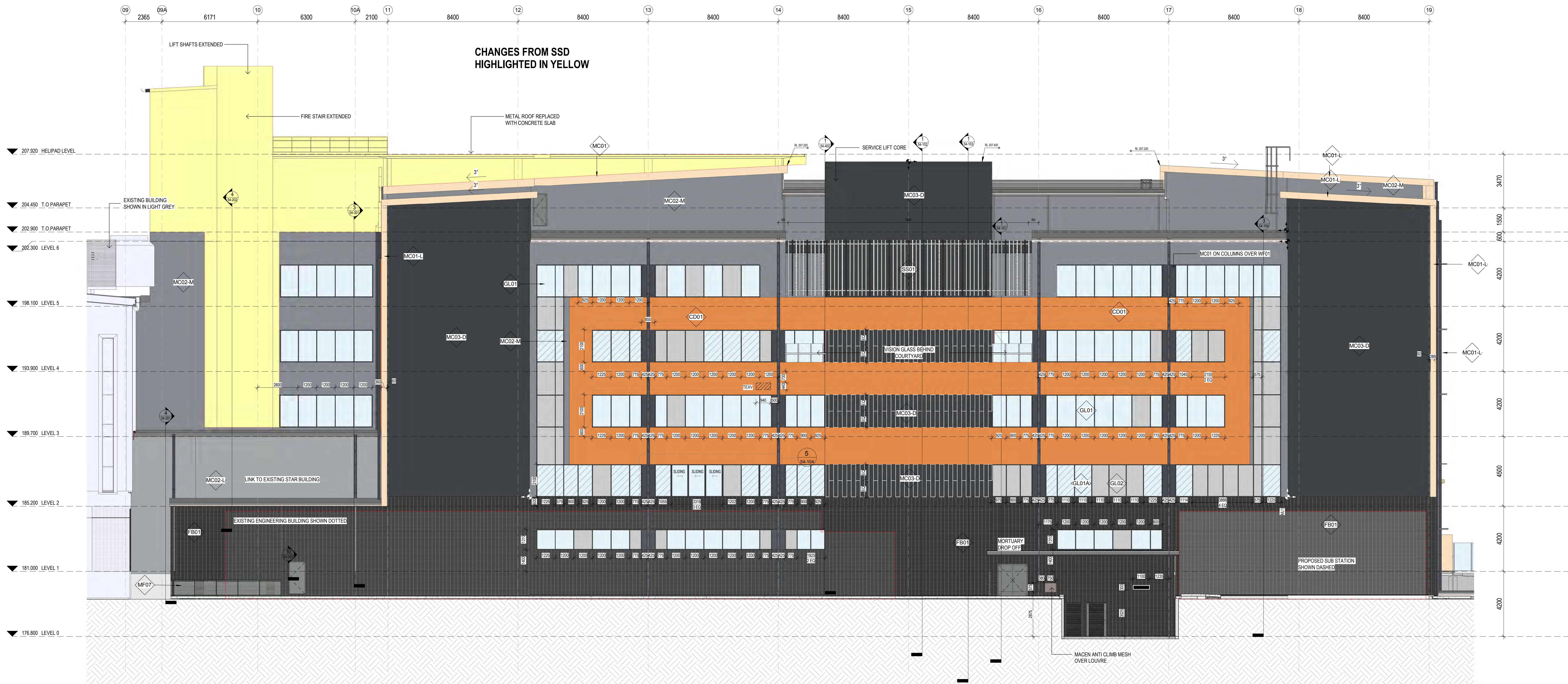
DRAWING TITLE

**HELIPAD ELEVATIONS &
PERSPECTIVE**

SCALE: 1:200@A0 DATE: 20/04/18 DRAWN BY: CJ CHECKED: MG

PROJECT No: 10390 ARC-DNG-49-002 DRAWING No: 8





1 MAIN BUILDING - EAST ELEVATION
91009 1:100

NSW GOVERNMENT | **Planning, Industry & Environment**

Issued under the Environmental Planning and Assessment Act 1979

Approved Section: 4.55 (1A) Application No: SSD-8647-Mod-2

Granted On: 25 July 2019 Signed *[Signature]*

Sheet No: 11 of 13

REV	DESCRIPTION	DIN	DATE
T1	ISSUES FOR CROWN CERTIFICATE	MKS	19.07.2018
A	Crown Certificate 2 - For MC Review	MKS	31.08.2018
B	Issued for Crown Certificate 2	MKS	07.09.2018
C	Issued for Construction	CJ	04.12.2018
D	Issued for Construction	CJ	08.02.2019
E	Issued for Construction	MKS	20.02.2019
F	Issued for Construction	CJ	28.02.2019
G	Issued for Construction	CJ	11.03.2019
H	Issued for Construction	CJ	19.03.2019
I	Issued for Construction	CJ	22.03.2019
J	Issued for Construction	MKS	10.05.2019
K	Issued for Construction	MKS	07.06.2019
L	Issued for Construction	MKS	21.06.2019
M	Issued for Construction	MKS	02.07.2019
N	Issued for Construction	MKS	08.07.2019

EXTERIOR MATERIALS LEGEND

REFER TO DRAWING ARC-DNG-54-001 FOR WALL TYPE DETAILS

MASONRY

FB01 FACE BRICK COLOUR OF CONTROL MOVEMENT JOINTS TO MATCH WHITE MORTAR. ALIGN WITH BRICK SET-OUT. NO CUT. BRICKS AT MOVEMENT JOINTS & EXTERNAL CORNERS

FB02 FACE BRICK

TERRACADE

CD01 PRECAST FACADE CLADDING

SOLID ALUMINIUM

MC01 METAL CLADDING PANEL, NOT RIBBED

PRE-FINISHED COLOURBOND

MC02 METAL CLADDING - RIBBED SHEET (DARKEST)

MC03 METAL CLADDING - RIBBED SHEET (MID)

MC04 METAL CLADDING - RIBBED SHEET (LIGHTEST)

MC05 METAL CLADDING TO SOFFIT/TIMBER LINING

MC06 METAL CLADDING PANEL, AS PER MC01

GLAZING

WF01 WINDOW FRAMES & DOORS

GL01 VISION GLASS

GL02 VISION GLASS WITH INTEGRAL BLIND

GL03 COLOURBACK GLASS

GF01 GLAZING FILM

MISCELLANEOUS

SS01 METAL CLAD SUNSCREEN BLADES

SS02 ALUMINIUM SUNSCREEN LOUVRES

SS03 METAL CLAD SHADOW BOXES

SS04 AS ABOVE

PF01 PERFORATED METAL SCREEN

PF02 PERFORATED METAL SCREEN

MF01 METAL LOUVER TO PLANT ON ROOF

MF02 METAL LOUVER AT ORNAIL, SPACE BELOW LINK TO STAR BUILDING

MF03 METAL LOUVER AT ORNAIL, SPACE BELOW LINK TO STAR BUILDING

MU PROPOSED MOVEMENT JOINT TO BRICK

FD01 GROUND LEVEL AWNINGS AROUND EMERGENCY BUILDING

PT DOOR PAINT

RF01 ROOF SHEETING (LIGHTEST)

RF02 ROOF SHEETING

RO01 RAINWATER GOODS (DARKEST)

RO02 RAINWATER GOODS

CW01 CHAINWIRE FENCE

** LANDSCAPE & COURTYARD FLOORING FINISHES

TEXV TREEDRIP COURTYARD EXHAUST IN TERRACADE WALL CAVITY. FACADE CONTRACTOR CAN COORDINATE ALTERNATE LOCATIONS WITH MECHANICAL CONTRACTOR WITH THE CONDITION THE SELECTED LOCATIONS REMAIN CONCEALED BEHIND THE TERRACADE CLADDING

NOTE:

REFER TO EXTERNAL FINISHES SCHEDULE FOR INDICATIVE IMAGES OF MATERIALS AND FINISHES

MC02 SET-OUT

COPYRIGHT

ALL RIGHTS RESERVED. THIS WORK IS COPYRIGHT AND CANNOT BE REPRODUCED OR COPIED IN ANY FORM OR BY ANY MEANS (GRAPHIC, ELECTRONIC OR MECHANICAL) INCLUDING PHOTOCOPYING, WITHOUT THE WRITTEN PERMISSION OF THE PRINCIPAL UNDER THE TERMS OF THE CONTRACT. ANY LICENCE, EXPRESS OR IMPLIED, TO USE THE DOCUMENT FOR ANY PURPOSE WHATSOEVER IS RESTRICTED TO THE TERMS OF THE AGREEMENT OR IMPLIED AGREEMENT WITH THE PRINCIPAL UNDER THE TERMS OF THE CONTRACT.

DIMENSIONS

USE FIGURED DIMENSIONS. DIMENSIONAL SCALES CONTRACTORS MUST VERIFY ALL DIMENSIONS ON THIS SITE BEFORE COMMENCING ANY WORK OR MAKING ANY SHOP DRAWING WHICH MUST BE SUBMITTED AND REVIEWED BEFORE MANUFACTURE.

FIXTURES, FITTINGS & EQUIPMENT SPECIFICATIONS

SUBSTITUTE FREE EQUIPMENT SPECIFICATIONS
THE FREE EQUIPMENT SPECIFICATIONS HAVE BEEN COMPLETED ON THE BASIS OF THE DESIGN PROVIDED FOR THE PROJECT. THE DESIGN PROVIDES FOR THE LOCATION, ALLOCATION, SERVICES, LOADING AND ACCESS CLEARANCES AND WHERE APPROPRIATE SERVICE REQUIREMENTS. IT SHOULD BE NOTED THAT SUBSTITUTION OF EQUIPMENT WITH ALTERNATE SPECIFICATIONS SHOULD NOT BE PROCEEDED PRIOR TO VALIDATING THOSE SPECIFICATIONS AGAINST THE ITEM CONTROL SCHEDULE AND DESIGN PROVISIONS IN THE MODEL. THE OFFICE ACCEPTS NO RESPONSIBILITY FOR THE PROVISIONS OF SUBSTITUTE FREE EQUIPMENT WHICH HAS NOT BEEN REVIEWED AND VALIDATED AGAINST THE ORIGINAL DESIGN PROVISIONS.

SERVICE POINTS DISCLAIMER
THE SERVICE POINTS IDENTIFIED ON THESE DRAWINGS HAVE BEEN OVERLAPED FROM THE LIVING SERVICES ENGINEERING MODEL, AND ARE PROVIDED FOR INFORMATION AND SET-OUT PURPOSES ONLY. WE HAVE BEEN ADVISED BY THE SERVICES ENGINEERS THAT THE POINTS REPRESENTED IN THESE DRAWINGS ARE CORRECT AT THE TIME OF PUBLICATION. THIS OFFICE DOES NOT WARRANT THE ACCURACY OF THIS DATA. REFER TO THE LIVING SERVICES ENGINEERING DOCUMENTATION FOR THE INSTALLATION OF THE SERVICE POINTS AND THE INTERFACE BETWEEN THE SERVICE POINTS AND THE RESPECTIVE ENGINEERING SYSTEMS.

ISSUED FOR CONSTRUCTION

ARCHITECTS



ARCH: 9111-04-010-002
LEVEL 4, 88 YORK STREET
SYDNEY NSW 2000, AUSTRALIA
PH: (02) 8298 4800 FAX: (02) 9885 2455

THIS ARCHITECTURAL DESIGN IS THE COPYRIGHT OF
STUART THOMAS HAYNES ARCHITECTS PTY LTD (ARCHITECTS)
AND SHALL NOT BE REPRODUCED WITHOUT THEIR WRITTEN PERMISSION
CLIENT



PROJECT

HORNSBY KU-RING-GAI HOSPITAL STAGE 2

Palmerston Road
HORNSBY NSW 2077

DRAWING TITLE

EAST ELEVATION

SCALE

DATE

As indicated

PROJECT No

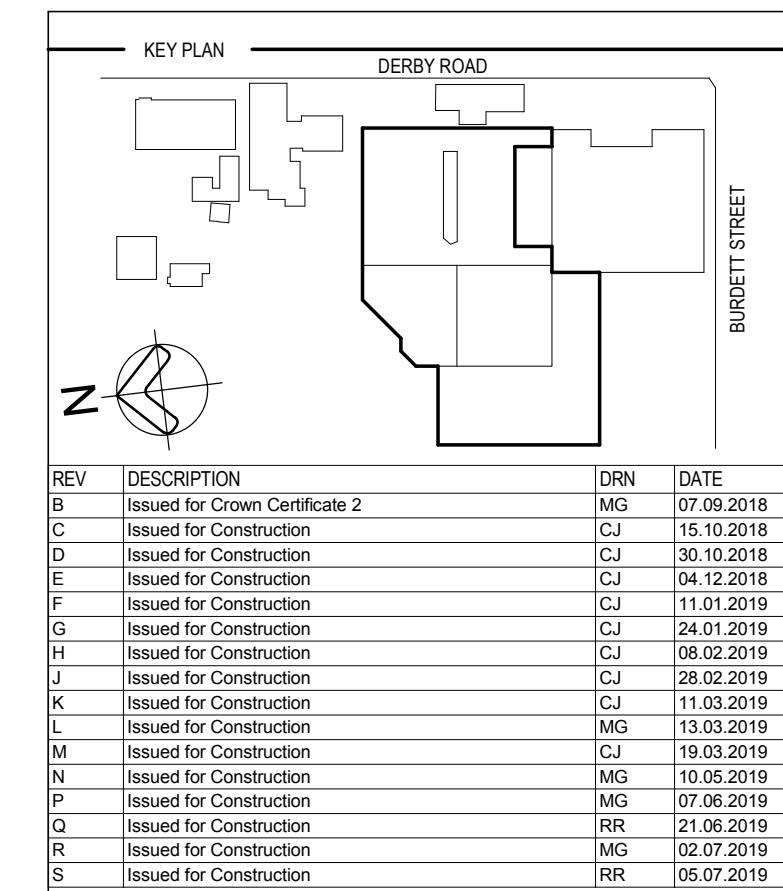
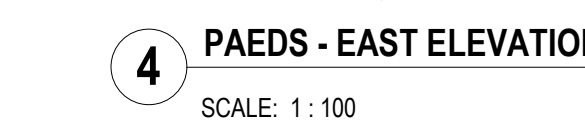
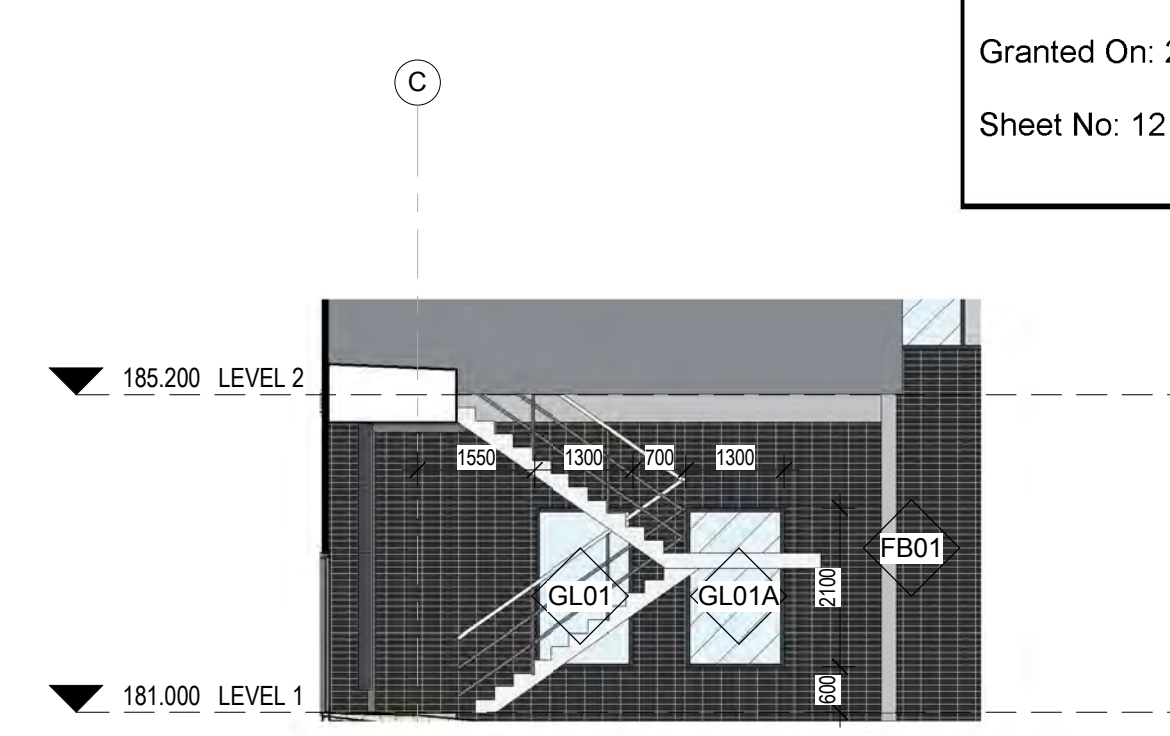
10390

DRAWING No

ARC-DNG-50-003

REVISION

Q



EXTERIOR MATERIALS / LEGEND

REFER TO DRAWING ARC-SING-S4-001 FOR WALL TYPE DETAILS

MASONRY
B701 BLOCKWORK

F801 FACE BRICK, COLOUR OF COURSE/WORKMENT JOINTS, TO MATCH WITH THE ALUM WITH BROCK-SET OUT. NO CUT BRICKS AT MOVEMENT JOINTS / EXTERNAL CORNERS

F802 FACE BRICK

TERRAZZO
C01 PRECAST FACE CLADDING

SOLID ALUMINUM
N001 METAL CLADDING PANEL, NOT RIBBED

PREFINISHED COLOURED
M002 METAL CLADDING - RIBBED SHEET (DARKEST)
M003 METAL CLADDING - RIBBED SHEET (MID)
M004 METAL CLADDING - RIBBED SHEET (LIGHTEST)
M005 METAL CLADDING - RIBBED SHEET (GALLESS)

N004 METAL CLADDING TO SIMULATE TIMBERING

M006 METAL CLADDING PANEL AS PER M001

GLAZING
W011 WINDOW FRAMES & DOORS

CL01 VISION GLASS

QLED/VISION GLASS WITH INTEGRAL BLIND

///

QLED COLOURBACK GLASS

■

GF01 GLAZING FILM

MISCELLANEOUS

S501 METAL GLAZ SUNDRENCH BLADES

S502 ALUMINIUM SUNDRENCH LOUVERS

S503 METAL GLAZ SHADOW BOXES

S504 45 DEGREE

P501 PERFORATED METAL SCREEN

P502 PERFORATED METAL SCREEN

M7 METAL LOUVER TO PLANT ON ROOF

M702 METAL LOUVERS AT CRAWL SPACE BELOW LINK TO STAR BUILDING

M706 METAL ACUSTIC RATED LOUVER

MJ PROPOSED MOVEMENT JUMP TO BRICK

FC01 GROUND LEVEL AWNINGS AROUND EMERGENCY BUILDING

PT DOOR PART

RF01 ROOF SHEETING (LIGHTEST)

RF02 ROOF SHEETING


R001 RAINWATER GOODIES (PARKIST)

R002 RAINWATER GOODIES

CW01 CHAINMESH FENCE

— LANDSCAPE & COURTYARD FLYINGTHIRDS

SKY PLAZA/TIC COURTYARD SKYLIGHTS

<p>TEXT:</p> <p>CONCEALED ISOLATION ROOM EXHAUST IN TERRACE WALL CAVITY. FADAGE CONTRACTOR CAN COORDINATE ALTERNATE LOCATIONS WITH MECHANICAL CONTRACTOR WITH THE CONDITION THE SELECTED LOCATIONS REMAIN CONCEALED BEHIND THE TERRACE CLADDING.</p> <p>NOTE:</p> <p>REFER TO EXTERNAL FINISHES SCHEDULE FOR INDICATIVE IMAGES OF MATERIALS AND FINISHES.</p>  <p>MC32 SET OUT</p>	<p>COPYRIGHT</p> <p>ALL RIGHTS RESERVED. THIS WORK IS COPYRIGHTED AND CANNOT BE REPRODUCED OR COPIED BY ANY PERSON BY ANY MEANS (GRAPHIC, ELECTRONIC OR MECHANICAL), INCLUDING PHOTOCOPYING WITHOUT THE WRITTEN PERMISSION OF THE PRINCIPAL. NO PART OF THIS DOCUMENT MAY BE REPRODUCED OR TRANSMITTED IN ANY FORM OR BY ANY MEANS, ELECTRONIC OR MECHANICAL, INCLUDING PHOTOCOPYING, RECORDING, OR BY ANY INFORMATION STORAGE AND RETRIEVAL SYSTEM, WITHOUT PERMISSION IN WRITING FROM THE PRINCIPAL. THE USER OF THIS DOCUMENT FOR ANY PURPOSE WHATSOEVER IS RESTRICTED TO THE TERMS OF THE AGREEMENT OR IMPLIED AGREEMENT WITH THE PRINCIPAL UNDER THE TERMS OF THE CONTRACT.</p> <p>DIMENSIONS</p>
---	--

[illegible]

ISSUED FOR CONSTRUCTION

ARCHITECTS



ABN: 21 134 478 005
LEVEL 4, 88 YORK STREET
SYDNEY NSW 2000, AUSTRALIA
PH: (02) 439 4800 FAX: (02) 988 2446

THIS ARCHITECTURAL DESIGN IS THE COPYRIGHT OF
SILVER THOMAS HANLEY (AUS) PTY LTD ABN 21 134 478 005
AND SHALL NOT BE REPRODUCED WITHOUT THEIR WRITTEN PERMISSION



**HORNSBY KU-RING-GAI
HOSPITAL STAGE 2**

Palmerston Road
HORNSBY NSW 2077

SOUTH ELEVATIONS

SCALE	DATE	DRAWN BY	CHECKED
As indicated @ A0	20/04/18	GS	NP

PROJECT NO.	DESCRIPTION	REVISION
10390	ARC-DNG-50-004	S

PROJECT NO.	DESCRIPTION	REVISION
10390	ARC-DNG-50-004	S



1 WEST ELEVATION A - MI & ALLIED HEALTH PAED
SCALE: 1: 100



**Planning,
Industry &
Environment**

Issued under the Environmental Planning and Assessment Act 1979

Approved Section: 4.55 (1A) Application No: SSD-8647-Mod-2
Granted On: 25 July 2019 Signed: *[Signature]*

Sheet No: 13 of 13

KEY PLAN			
REV	DESCRIPTION	DEN	DATE
P	Document number and B96 block updated	US	20.04.2018
10	ISSUED FOR CROWN CERTIFICATE	MS	22.06.2018
11	ISSUED FOR CROWN CERTIFICATE	MS	11.07.2018
A	Crown Certificate 2 - For MC Review	MS	31.08.2018
B	Issued for Construction	MS	07.09.2019
C	Issued for Construction	CJ	04.01.2019
D	Issued for Construction	CJ	11.01.2019
E	Issued for Construction	CJ	24.01.2019
F	Issued for Construction	CJ	08.02.2019
G	Issued for Construction	CJ	28.02.2019
H	Issued for Construction	CJ	19.03.2019
I	Issued for Construction	CJ	26.03.2019
J	Issued for Construction	MS	13.05.2019
K	Issued for Construction	MS	07.06.2019
L	Issued for Construction	MS	02.07.2019
M	Issued for Construction	MS	08.07.2019

EXTERIOR MATERIALS LEGEND

REFER TO DRAWING ARC-DNG-54-001 FOR WALL TYPE DETAILS

MASONRY

SB01 BLOCKWORK

FB01 FACE BRICK, COLOUR OF CONTRAST. MOVEMENT JOINTS TO MATCH WHITE MORTAR. ALIGN WITH BRICK SET-OUT. NO OUT BRICKS AT MOVEMENT JOINTS & EXTERNAL CORNERS

FB02 FACE BRICK

TERRAZZO

CD01 PRECAST FAÇADE CLADDING

SOLID ALUMINIUM

MC01 METAL CLADDING PANEL, NOT RIBBED

PREFINISHED COLOURGLASS

MC02-D METAL CLADDING - RIBBED SHEET (DARKEST)

MC03-M METAL CLADDING - RIBBED SHEET (MID)

MC03-L METAL CLADDING - RIBBED SHEET (LIGHTEST)

MC03-D METAL CLADDING - RECESSED JOINTS (DARKEST)

MC04 METAL CLADDING TO SOFFIT-TIMBER LINING

MC05 METAL CLADDING PANEL, AS PER MC01

GLAZING

WF01 WINDOW FRAMES & DOORS

GL01 VISION GLASS

GL01A VISION GLASS WITH INTEGRAL BLIND

GL02 COLOURBACK GLASS

GL03 COLOURBACK GLASS

GL04 COLOURBACK GLASS

GL05 COLOURBACK GLASS

GL06 COLOURBACK GLASS

GL07 COLOURBACK GLASS

GL08 COLOURBACK GLASS

GL09 COLOURBACK GLASS

GL10 COLOURBACK GLASS

GL11 COLOURBACK GLASS

GL12 COLOURBACK GLASS

GL13 COLOURBACK GLASS

GL14 COLOURBACK GLASS

GL15 COLOURBACK GLASS

GL16 COLOURBACK GLASS

GL17 COLOURBACK GLASS

GL18 COLOURBACK GLASS

GL19 COLOURBACK GLASS

GL20 COLOURBACK GLASS

GL21 COLOURBACK GLASS

GL22 COLOURBACK GLASS

GL23 COLOURBACK GLASS

GL24 COLOURBACK GLASS

GL25 COLOURBACK GLASS

GL26 COLOURBACK GLASS

GL27 COLOURBACK GLASS

GL28 COLOURBACK GLASS

GL29 COLOURBACK GLASS

GL30 COLOURBACK GLASS

GL31 COLOURBACK GLASS

GL32 COLOURBACK GLASS

GL33 COLOURBACK GLASS

GL34 COLOURBACK GLASS

GL35 COLOURBACK GLASS

GL36 COLOURBACK GLASS

GL37 COLOURBACK GLASS

GL38 COLOURBACK GLASS

GL39 COLOURBACK GLASS

GL40 COLOURBACK GLASS

GL41 COLOURBACK GLASS

GL42 COLOURBACK GLASS

GL43 COLOURBACK GLASS

GL44 COLOURBACK GLASS

GL45 COLOURBACK GLASS

GL46 COLOURBACK GLASS

GL47 COLOURBACK GLASS

GL48 COLOURBACK GLASS

GL49 COLOURBACK GLASS

GL50 COLOURBACK GLASS

GL51 COLOURBACK GLASS

GL52 COLOURBACK GLASS

GL53 COLOURBACK GLASS

GL54 COLOURBACK GLASS

GL55 COLOURBACK GLASS

GL56 COLOURBACK GLASS

GL57 COLOURBACK GLASS

GL58 COLOURBACK GLASS

GL59 COLOURBACK GLASS

GL60 COLOURBACK GLASS

GL61 COLOURBACK GLASS

GL62 COLOURBACK GLASS

GL63 COLOURBACK GLASS

GL64 COLOURBACK GLASS

GL65 COLOURBACK GLASS

GL66 COLOURBACK GLASS

GL67 COLOURBACK GLASS

GL68 COLOURBACK GLASS

GL69 COLOURBACK GLASS

GL70 COLOURBACK GLASS

GL71 COLOURBACK GLASS

GL72 COLOURBACK GLASS

GL73 COLOURBACK GLASS

GL74 COLOURBACK GLASS

GL75 COLOURBACK GLASS

GL76 COLOURBACK GLASS

GL77 COLOURBACK GLASS

GL78 COLOURBACK GLASS

GL79 COLOURBACK GLASS

GL80 COLOURBACK GLASS

GL81 COLOURBACK GLASS

GL82 COLOURBACK GLASS

GL83 COLOURBACK GLASS

GL84 COLOURBACK GLASS

GL85 COLOURBACK GLASS

GL86 COLOURBACK GLASS

GL87 COLOURBACK GLASS

GL88 COLOURBACK GLASS

GL89 COLOURBACK GLASS

GL90 COLOURBACK GLASS

GL91 COLOURBACK GLASS

GL92 COLOURBACK GLASS

GL93 COLOURBACK GLASS

GL94 COLOURBACK GLASS

GL95 COLOURBACK GLASS

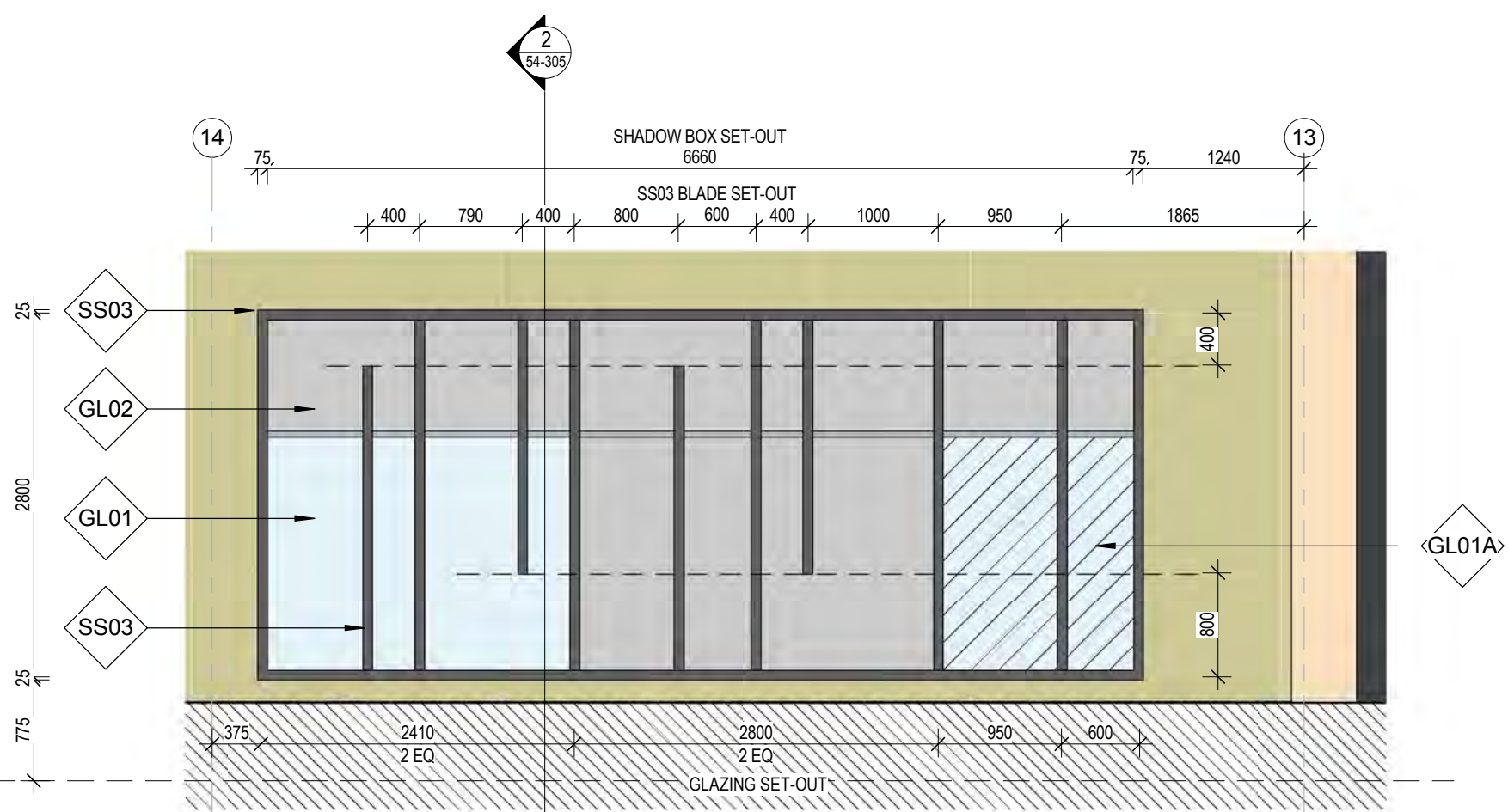
GL96 COLOURBACK GLASS

GL97 COLOURBACK GLASS

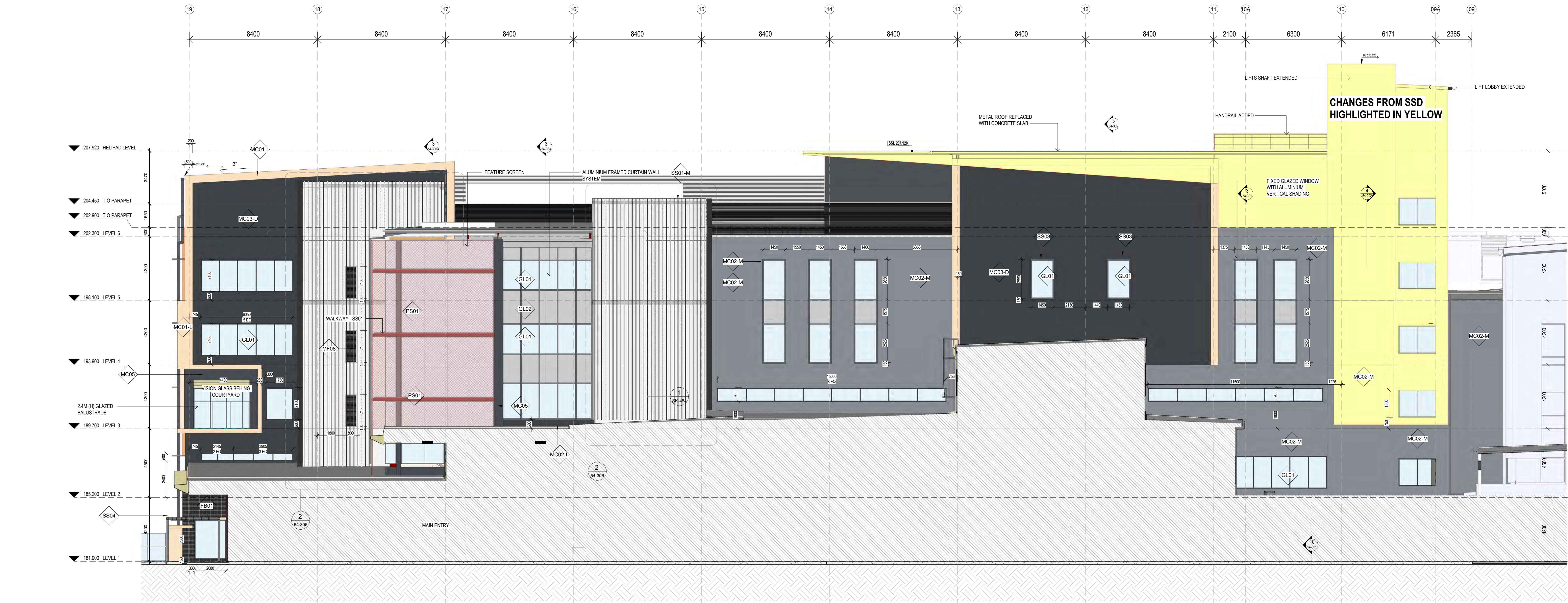
GL98 COLOURBACK GLASS

GL99 COLOURBACK GLASS

GL100 COLOURBACK GLASS



3 WEST ELEVATION - PAEDS
SCALE: 1: 50



2 WEST ELEVATION A - MAIN BUILDING
SCALE: 1: 100

COPYRIGHT

ALL RIGHTS RESERVED. THIS WORK IS COPYRIGHTED AND CANNOT BE REPRODUCED OR COPIED IN ANY FORM OR BY ANY MEANS (GRAPHIC, ELECTRONIC OR MECHANICAL INCLUDING PHOTOCOPYING, WITHOUT THE WRITTEN PERMISSION OF THE PRINCIPAL UNDER THE TERMS OF THE CONTRACT. ANY LICENCE, EXPRESS OR IMPLIED, TO USE THE DOCUMENT FOR ANY PURPOSE WHATSOEVER IS RESTRICTED TO THE TIME OF THE AGREEMENT OR IMPLIED AGREEMENT WITH THE PRINCIPAL UNDER THE TERMS OF THE CONTRACT.

DIMENSIONS

USE FIGURED DIMENSIONS. DIMENSIONAL CONTRACTORS MUST VERIFY ALL DIMENSIONS ON THE SITE BEFORE COMMENCING ANY WORK OR MAKING ANY SHOP DRAWING WHICH MUST BE SUBMITTED AND REVIEWED BEFORE MANUFACTURE.

FIXTURES, FITTINGS & EQUIPMENT SPECIFICATIONS

SUBSTITUTE FIRE EQUIPMENT SPECIFICATIONS
THE FIRE EQUIPMENT DESIGN AND DOCUMENTATION HAS BEEN COMPLETED ON THE BASIS OF FIRE AND EQUIPMENT ADVISED TO THIS OFFICE AT THE TIME OF BRIEFING THE DESIGN. THE DESIGN PROVIDES FOR FIRE AND EQUIPMENT INCORPORATING SPATIAL ALLOCATIONS, SERVICES, LOADING AND ACCESS CLEARANCES AND WHERE APPROPRIATE SERVICES REQUIREMENTS, MAKING THE RECORD FOR SUBMITTING PATTERNS AND FITTINGS. IT SHOULD BE NOTED THAT SUBSTITUTE FIRE EQUIPMENT WITH ALTERNATE SPECIFICATIONS SHOULD NOT BE PROVIDED PRIOR TO VALIDATING THOSE SPECIFICATIONS AGAINST THE ITEM CONTROL, SCHEDULE AND DESIGN PROVIDED IN THE MODEL. THIS OFFICE ACCEPTS NO RESPONSIBILITY FOR THE PROVISION OF SUBSTITUTE FIRE AND EQUIPMENT WHICH HAS NOT BEEN REVIEWED AND VALIDATED AGAINST THE ORIGINAL DESIGN PROVIDING.

SERVICE POINTS DISCLAIMER
THE SERVICE POINTS IDENTIFIED ON THESE DRAWINGS HAVE BEEN OBTAINED FROM THE SERVICE PROVIDERS ENGINEERING MODEL, AND ARE PROVIDED FOR INFORMATION AND REFERENCE PURPOSES ONLY. WE HAVE BEEN ADVISED BY THE SERVICE PROVIDERS THAT THE POINTS REPRESENTED ON THESE DRAWINGS ARE CORRECT AT THE TIME OF PUBLICATION. THIS OFFICE DOES NOT WARRANT THE ACCURACY OF THIS DATA. REFER TO THE BUILDING SERVICES ENGINEERING DOCUMENTATION FOR THE INSTALLATION OF THE SERVICE POINTS AND THE INTERFACE BETWEEN THE SERVICE POINTS AND THE RESPECTIVE ENGINEERING SYSTEMS.

ISSUED FOR CONSTRUCTION

ARCHITECTS



ABC 11 124 470 802
LEVEL 4, 88 YORK STREET
SYDNEY NSW 2000 AUSTRALIA
PH: (02) 8298 4800 FAX: (02) 9885 2455

THIS ARCHITECTURAL DESIGN IS THE COPYRIGHT OF
SILVER THORNHAWK AUSTRALIA PTY LTD ABN 61 124 470 802
AND SHALL NOT BE REPRODUCED WITHOUT THEIR WRITTEN PERMISSION
CLIENT



HORNBSBY KU-RING-GAI
HOSPITAL STAGE 2

Palmerston Road
HORNBSBY NSW 2077

WEST ELEVATIONS
MI, PAEDS & MAIN BUILDING

SCALE DATE DRAWN BY CHECKED
As indicated 20/04/18 GS NP

PROJECT NO DRAWING NO REVISION
10390 ARC-DNG-50-006 N