

9 October 2018

Johnsen Lim  
Senior Project Architect  
Billard Leece Partnership  
Studio 201, 50 Holt Street, Surry Hills 2010

Dear Johnsen,

**RE: Addendum To Waste Management Plan - Picton High School Redevelopment (27 February 2018)**

**Introduction**

SMEC Australia Pty Ltd (SMEC) were engaged by Billard Leece Partnership Pty Ltd (BLP) on behalf of New South Wales (NSW) Department of Education (DoE) (the client) to develop a Waste Management Plan (WMP) for the demolition, construction and operations for the Picton High School Redevelopment, located at 480 Argyle Street Picton, NSW 2571 (the Project). The WMP formed part of the technical inputs to the Environmental Impact Statement (EIS) for the Project. The Project was deemed a State Significant Development (SSD 8640).

The WMP was prepared in order to address the Secretary's Environmental Assessment Requirements (SEARs) and relevant legislation, policies and guidelines.

**Site Description**

The Project is a public high school and comprises various buildings including administration areas, offices, classrooms, gym/hall, workshops, amenities blocks, storage, covered outdoor learning area, walkways and agricultural plot. It is understood that the original school buildings were constructed around 1958 and various other buildings have been added throughout the 1960's, 1980's and 2000's. In addition to the permanent buildings there are around fourteen demountable buildings at the site. Picton High School will provide permanent teaching spaces (classroom space) for 1,500 students and core facilities (common amenities – library, hall, recreational facilities etc.) are proposed for 2,000 students. Accordingly, the school would accommodate for a maximum 1,500 students at commencement of operation.

The site is bounded by residential properties to the north, south and west and commercial/industrial sites to the southeast. The land to the east and southwest appears vacant.

Numerous buildings (identified in Figure 1.1 of the WMP) are to be demolished to facilitate the redevelopment of the site.

**Background**

The SEARs for the Project were issued on 17 August 2017 and reissued on 29 September 2017. The SEARs outline the requirements for waste management for the Project.



The WMP must provide information on the following:

- Identify, quantify and classify the likely waste streams to be generated during construction and operation
- Describe the measures to be implemented to manage, reuse, recycle and safely dispose of this waste.
- Identify where possible appropriate servicing arrangements (including but not limited to, waste management, loading zones, mechanical plant) for the site.

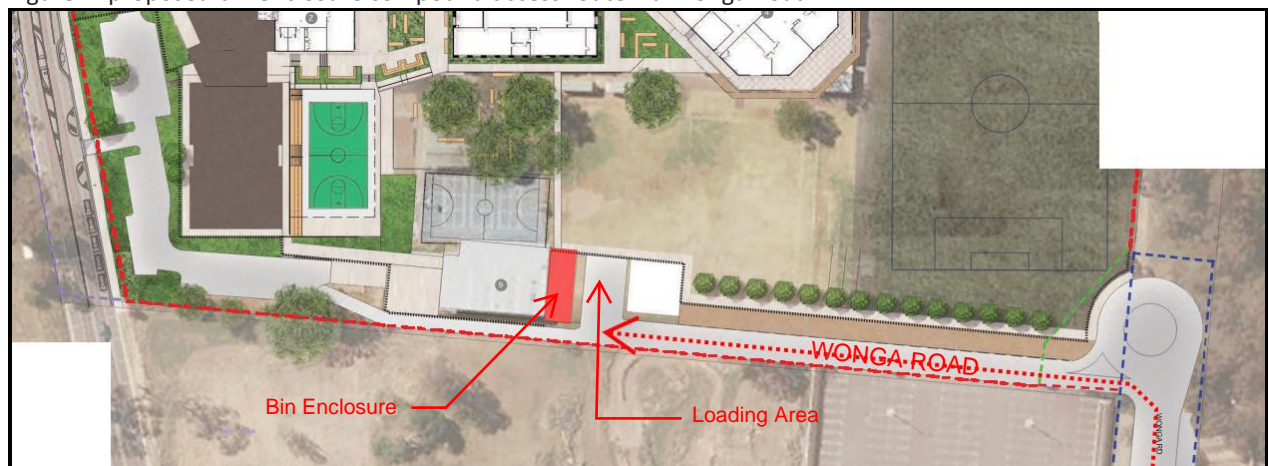
### Addendum

This addendum to the original WMP was requested by BLP, and provides additional information with regards to operational waste collection processes at the site. The additional information contained within this addendum section is provided in order to compliment the information contained within 'The Segregation and Collection Processes' section contained within Appendix F of the WMP and was provided to SMEC by BLP via email.

The revised operational waste collection information is summarised below and presented in Attachment 1:

- Operational waste (general and recyclable) will be stored within the bin enclosure compound located at the end of the proposed driveway which will be accessed via Wonga Road (figure 1)
- Bins will be moved to the adjacent bin laydown area/collection point prior to collection and returned to the bin enclosure compound following collection
- The access driveway is to provide sufficient access and turning circle to allow both general and recyclable waste to be collected via a front loading MRV waste truck, commonly used of school waste collection (see attachment 1).

Figure 1: proposed bin enclosure compound access route via Wonga Road



Source: BLP – Part site plan

Yours sincerely,

**Daniel Saunders**

Team Leader Environmental Site Services

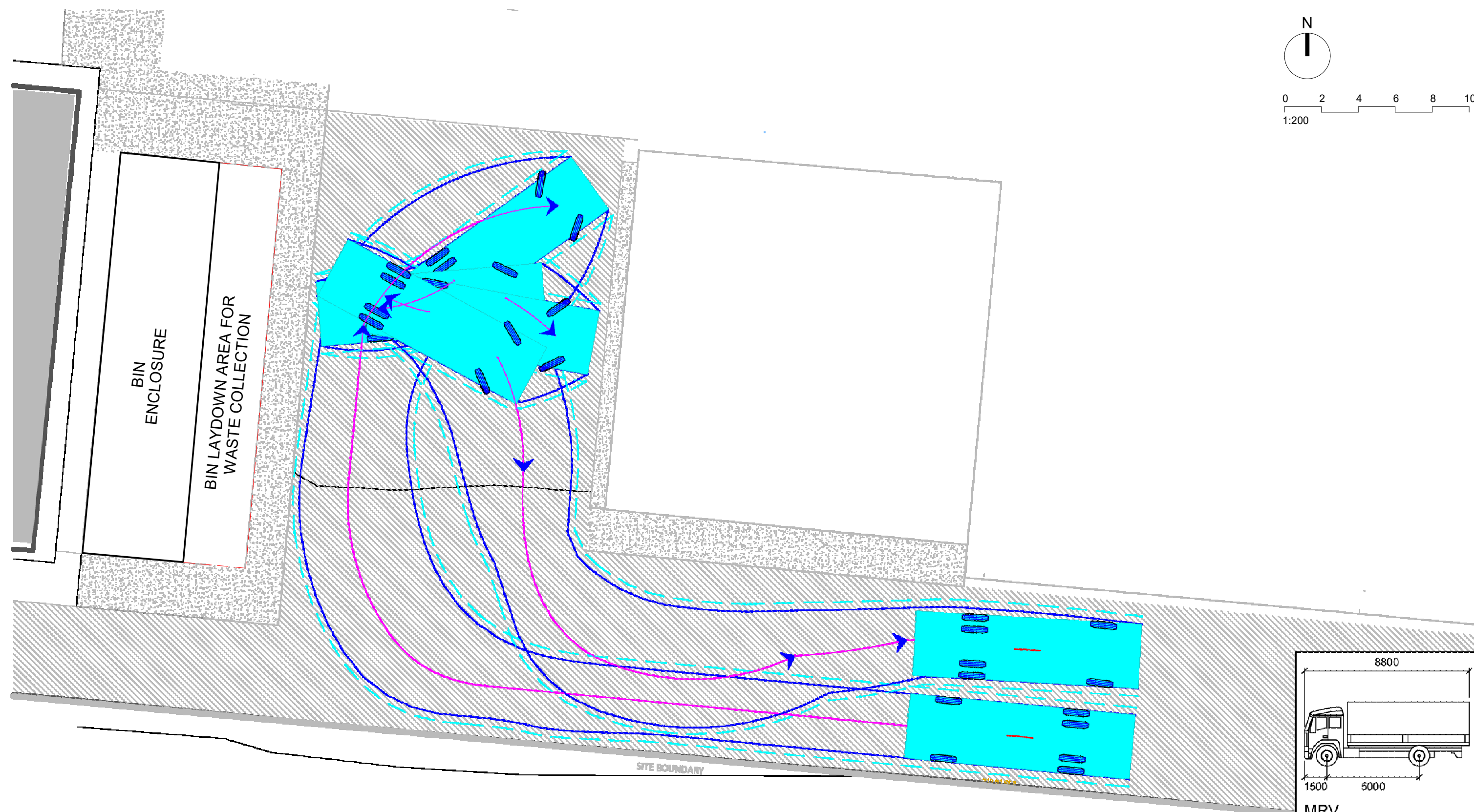
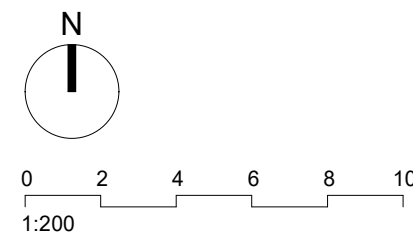
### List of Attachments

Attachment 1 – Waste Collection Swept Path

**References**

Waste Management Plan – Picton High School Redevelopment, ref no. 30013089, SMEC (Feb, 2018), issued 27 February 2018

**Attachment 1 - Waste Collection Swept Path (BLP, 10 August 2018)**



8800

1500 5000

**MRV**  
mm

Width	: 2500
Track	: 2500
Lock to Lock Time	: 6.0
Steering Angle	: 34.0

Drawn PR	Checked JL
Scale 1:200@A3	Date 10/08/18
Drawing Number SSD-AA-90-0001	Revision