



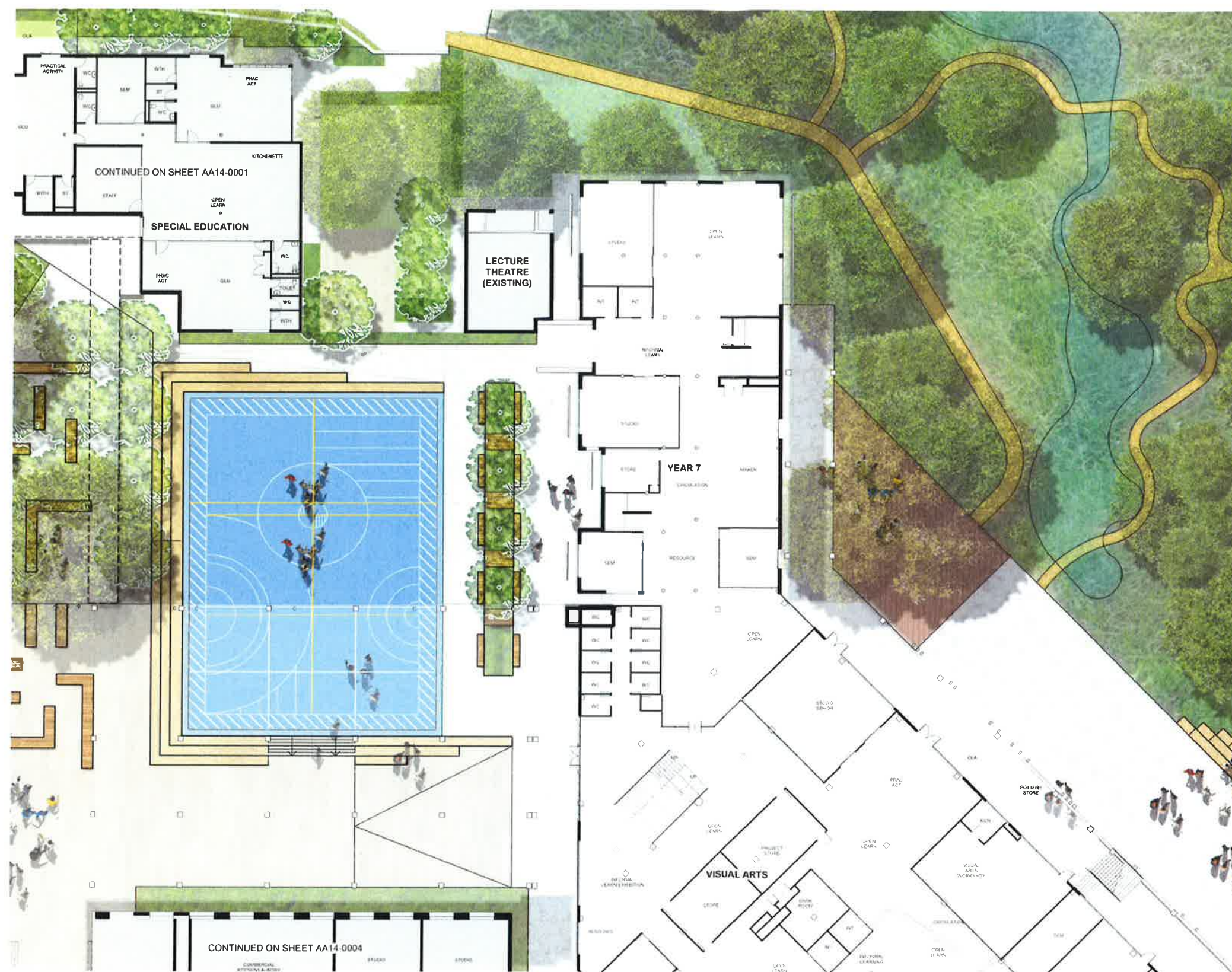
**NSW** Planning & Environment  
Issued under the Environmental Planning and Assessment Act 1979  
Approved Application No. SSD 8640  
granted on the 20 DEC 2018  
Signed [Signature]  
Sheet No. 1 of 39

- (red dashed) EXISTING BOUNDARY
- (green dashed) NEW SITE BOUNDARY
- (blue dashed) WOLLONDILLY COUNCIL LAND
- (light blue dashed) RMS LAND
- (purple dashed) EXTENT OF PROPOSED WORKS









**NSW GOVERNMENT** | **Planning & Environment**  
 Issued under the Environmental Planning and Assessment Act 1979

Approved Application No. SSD 8640

granted on the 20 DEC 2018

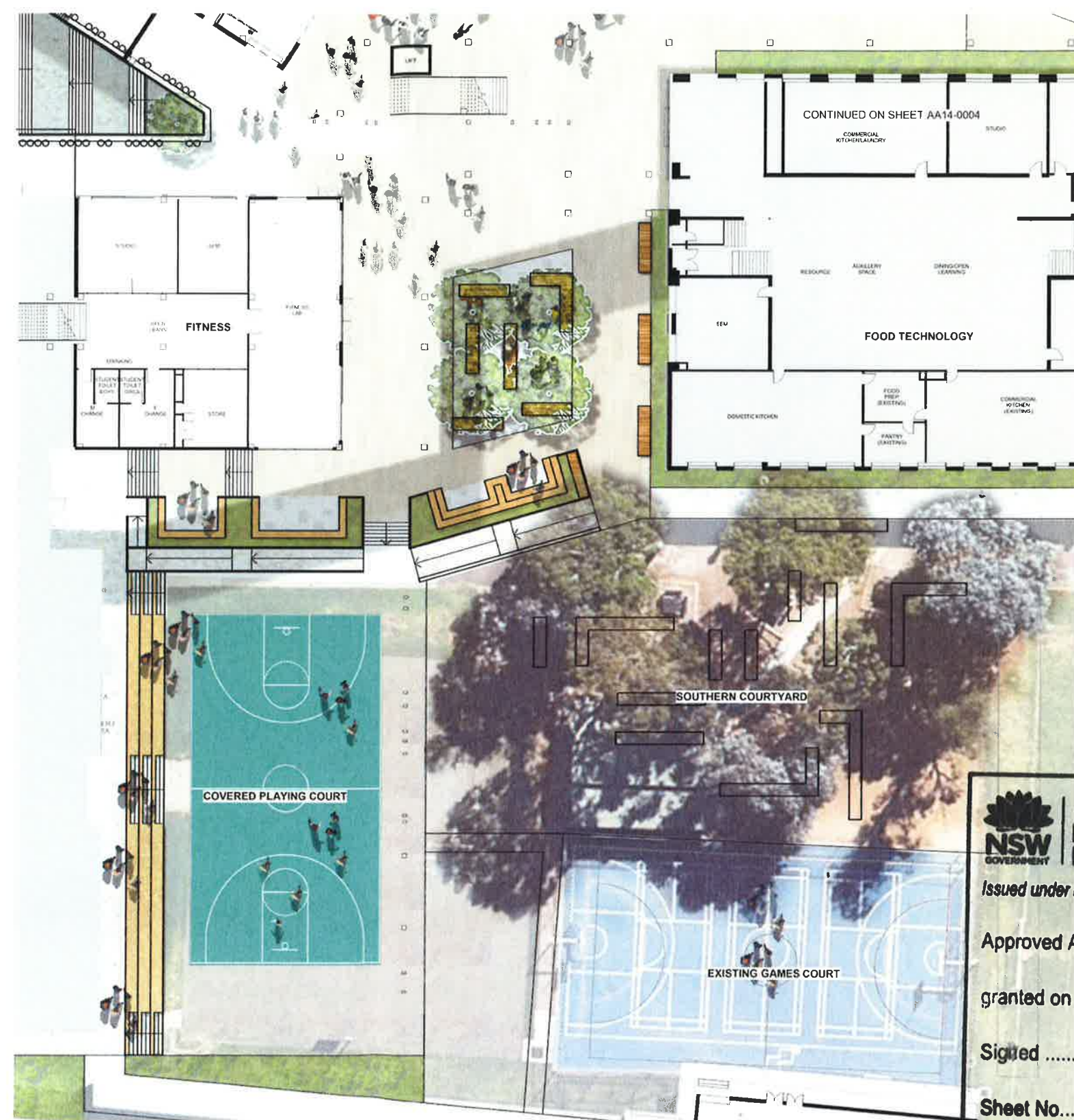
Signed [Signature]

Sheet No. 3 of 39



ZONE C

KEY PLAN: N01 TO SCALE



Planning & Environment

Issued under the Environmental Planning and Assessment Act 1979

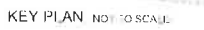
Approved Application No. SSD 8640

granted on the 20 DEC 2018

Signed [Signature]

Sheet No. 4 of 39





**SOUTHERN COURTYARD**

EXISTING GAMES COURT



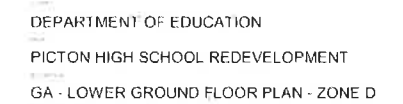
*Issued under the Environmental Planning and Assessment Act 1979*

Approved Application No.....SSA 8640.....

granted on the **20 DEC 2018**

Signed                     *rw*                    

Sheet No. 5 of 39



Project No. 17003  
Scale 1"=200'±  
Drawing No. S&D-AA1C-0004  
Date 24/07/18





**NSW** Planning & Environment  
GOVERNMENT

Issued under the Environmental Planning and Assessment Act 1979

Approved Application No. SSD 840

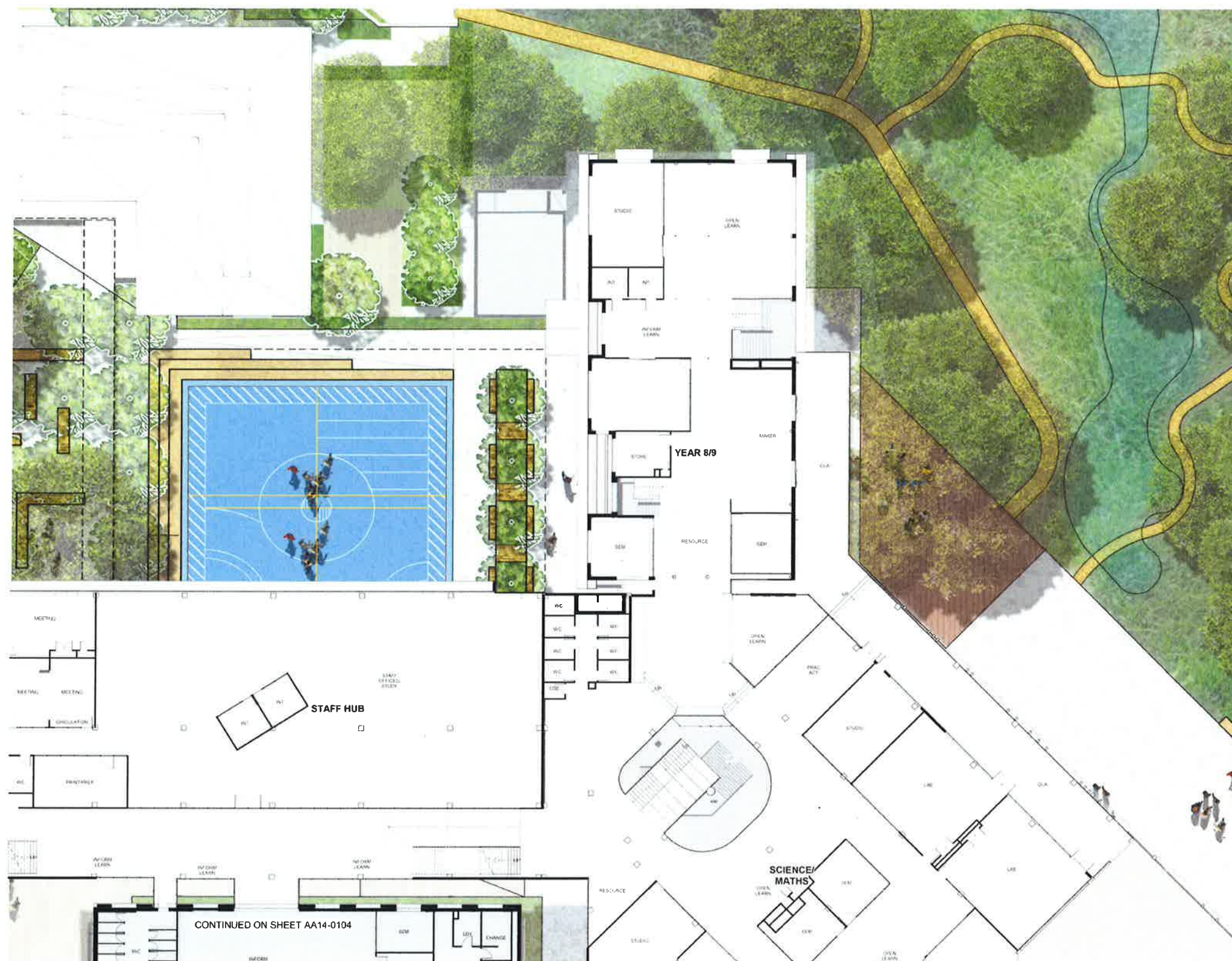
granted on the 20 DEC 2018

Signed aw

Sheet No. 6 of 39



KEY PLAN, NOT TO SCALE



## Planning & Environment

**Issued under the Environmental Planning and Assessment Act 1979**

Approved Application No. SD 8640

granted on the 20 DEC 2018

Signed aw

Sheet No. 7 of 39





KEY PLAN: NOT TO SCALE



**MUSIC**

CONTINUED ON SHEET AA14-0104

## MOVEMENT COMPLEX



## Planning & Environment

*Issued under the Environmental Planning and Assessment Act 1979*

Approved Application No. SSD 8640

granted on the 20 DEC 2018

Signed                     

Sheet No. 8 of 39



## Education



**Billard Leece  
Partnership**



DEPARTMENT OF EDUCATION  
 PICTON HIGH SCHOOL REDEVELOPMENT  
 GA - GROUND FLOOR PLAN - ZONE C

Project No. 17007  
Scale 1/200  
Drawing No. SSD-4A-10-003  
Date 2/2/12

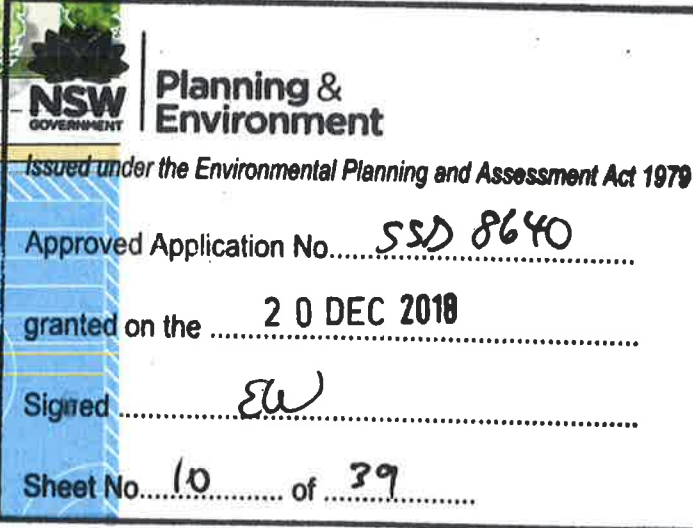




	<b>Planning &amp; Environment</b>
	<i>Issued under the Environmental Planning and Assessment Act 1979</i>
	Approved Application No..... <b>SSD 8640</b> .....
	granted on the <b>20 DEC 2018</b>
	Signed <i>[Signature]</i>
Sheet No..... <b>9</b> ..... of <b>39</b> .....	



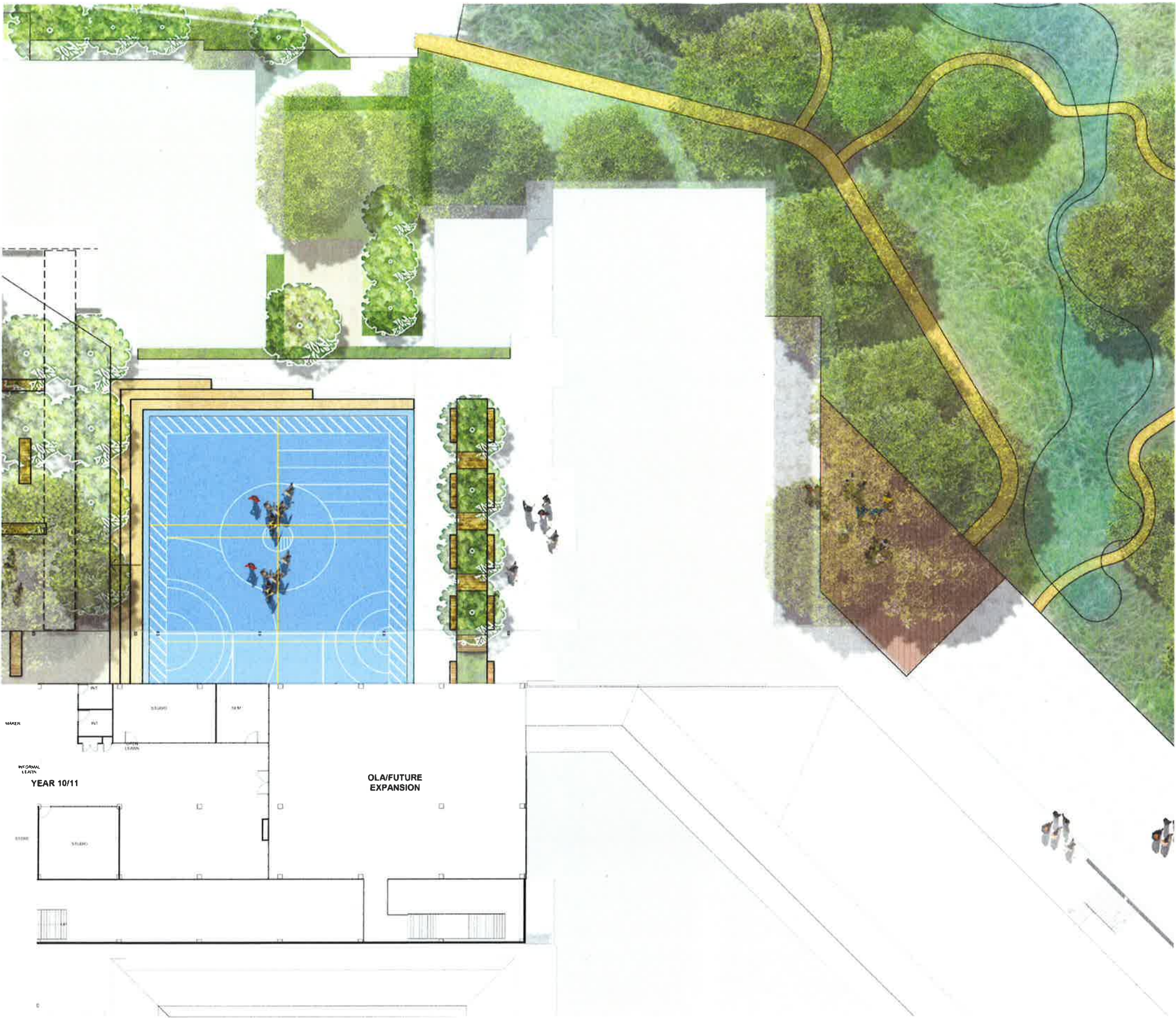
KEY PLAN: NOT TO SCALE



**Billard Leece  
Partnership**

Project No. 7083  
Scale 1"=200'-0"  
Drawing No. SSD-AA10-0201  
Date 2/27/16





ZONE B

KEY PLAN NOT TO SCALE



**Planning & Environment**

Issued under the Environmental Planning and Assessment Act 1979

Approved Application No. **SSD 8640**

granted on the **2.0 DEC. 2019**

Signed 

Sheet No. **11** of **29**



Education



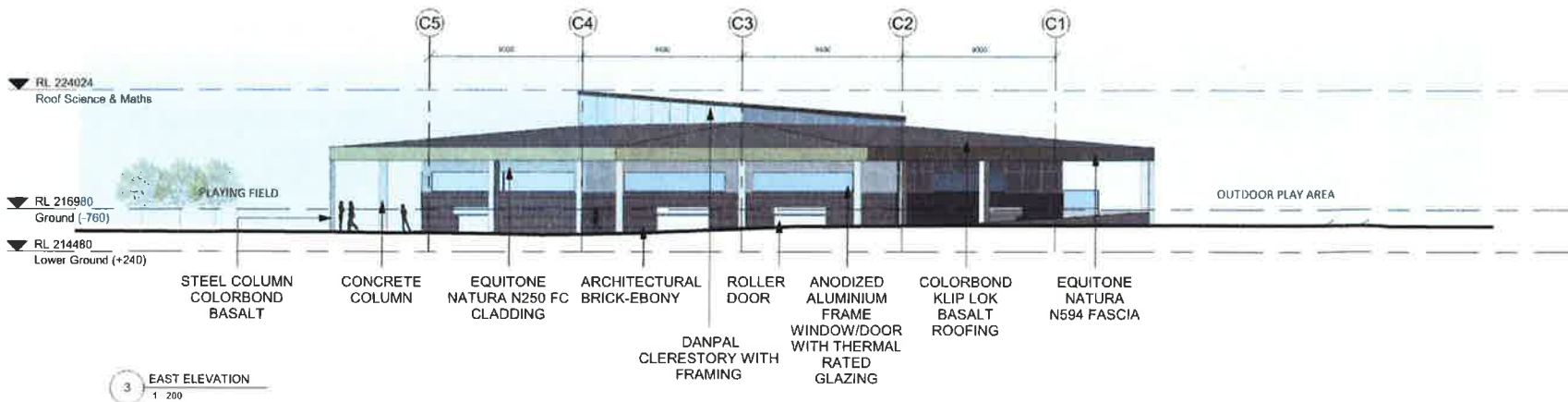
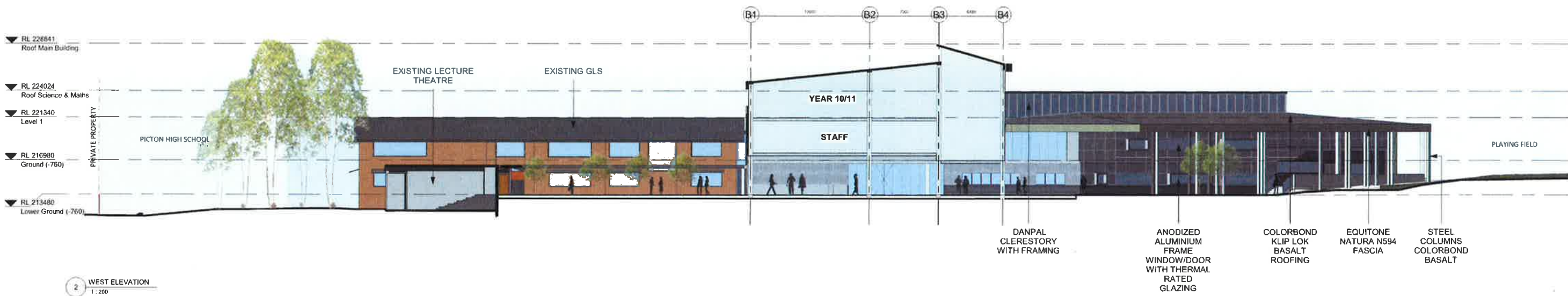
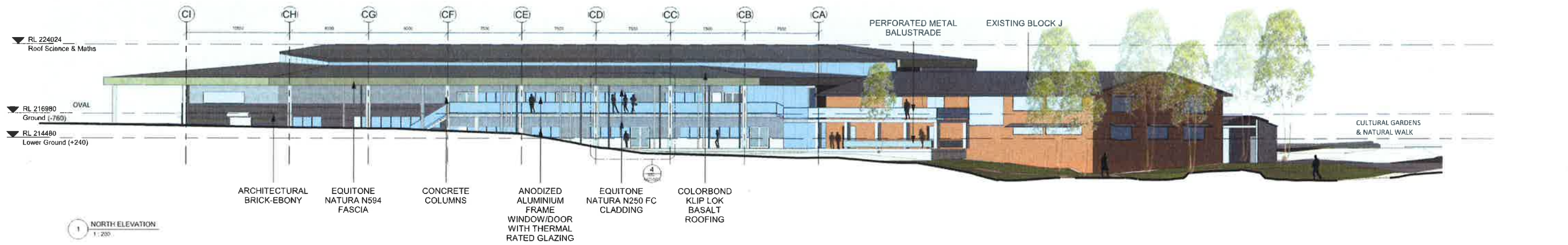
0 2 4 6 8 10  
1:200



DEPARTMENT OF EDUCATION  
**PICTON HIGH SCHOOL REDEVELOPMENT**  
 GA - FIRST FLOOR PLAN - ZONE B

Project No. 17A03  
 Scale 1:200 (A1)  
 Drawing No. SSD-AA10-0202  
 Date 27.07.16





**Planning & Environment**

Issued under the Environmental Planning and Assessment Act 1979

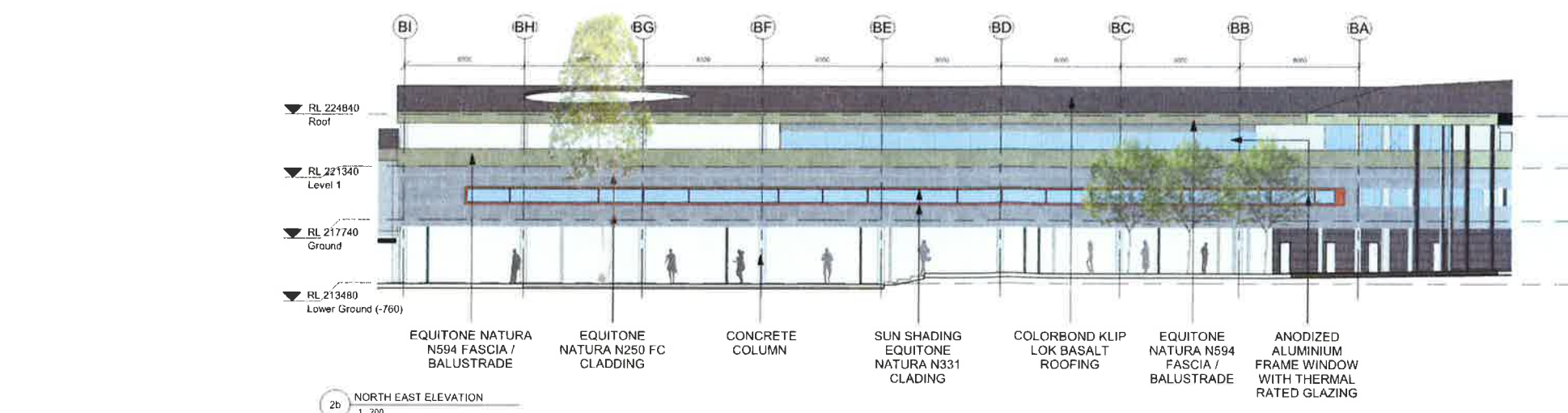
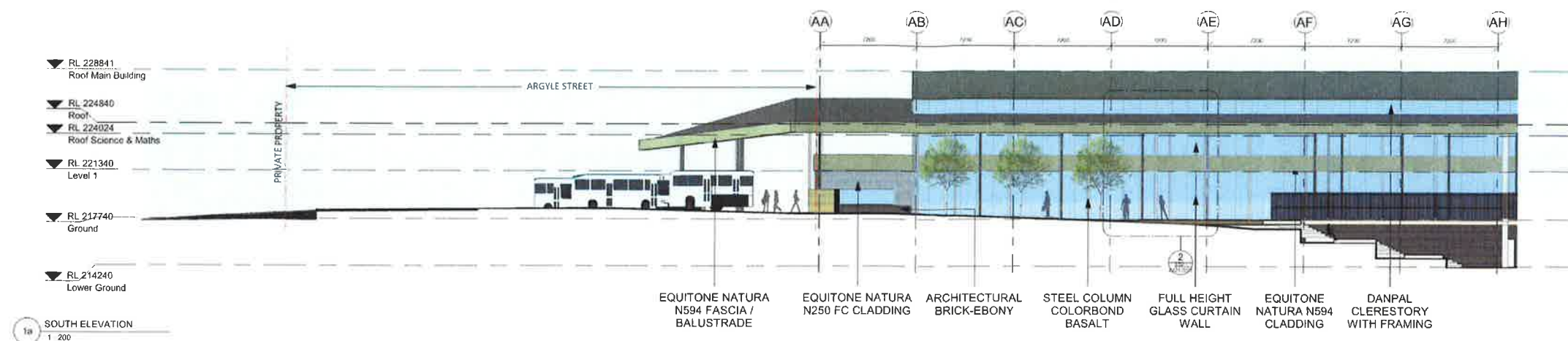
Approved Application No. **SSD 8640**

granted on the **20 DEC 2018**

Signed **ew**

Sheet No. **12** of **39**





**NSW GOVERNMENT** | **Planning & Environment**

Issued under the Environmental Planning and Assessment Act 1979

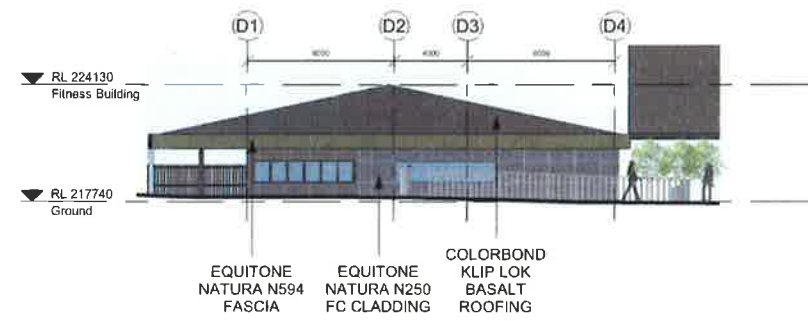
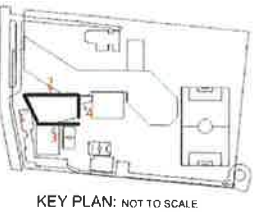
Approved Application No. **SSD 8640**

granted on the **20 DEC 2018**

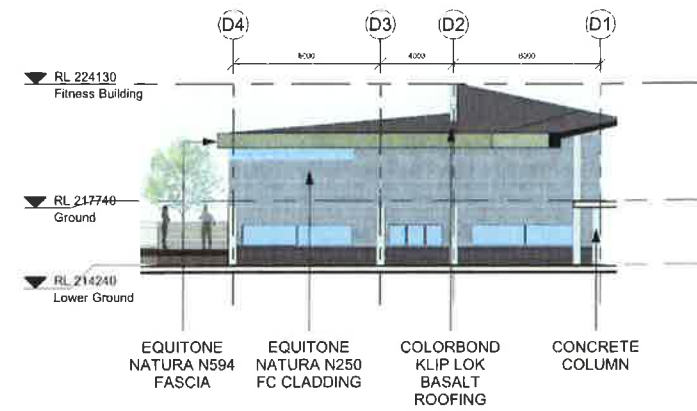
Signed *[Signature]*

Sheet No. **13** of **39**

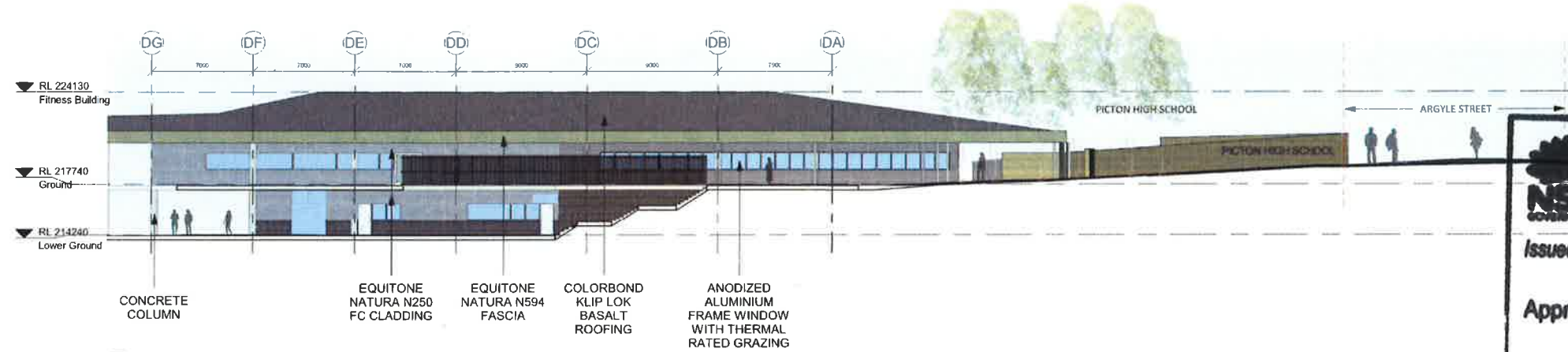




1 WEST ELEVATION  
1:200



4 EAST ELEVATION  
1:200



2 NORTH ELEVATION  
1:200



3 SOUTH ELEVATION  
1:200

**NSW** Planning & Environment  
GOVERNMENT

Issued under the Environmental Planning and Assessment Act 1979

Approved Application No. SSD 8640

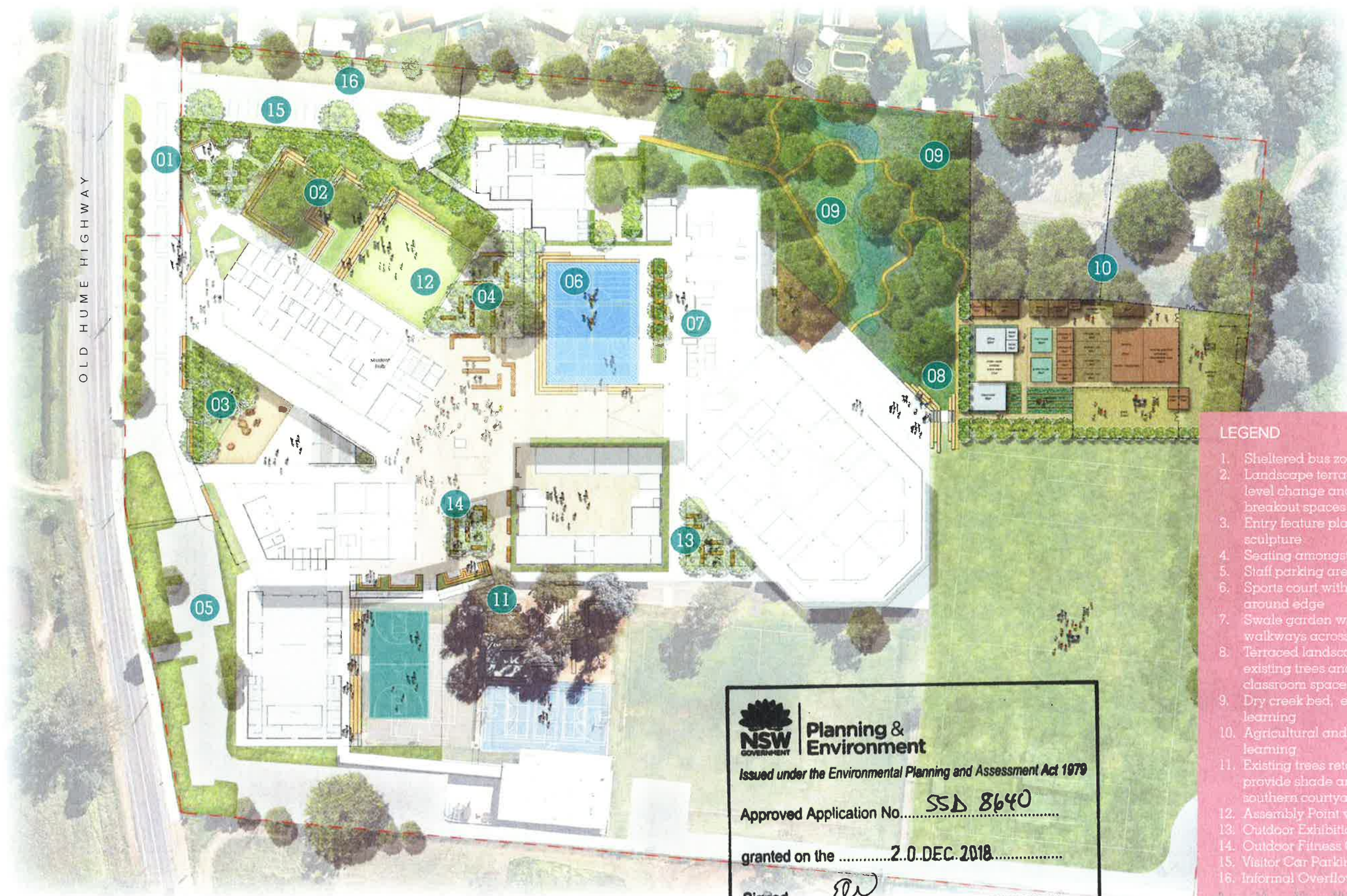
granted on the 20 DEC 2019

Signed [Signature]

Sheet No. 14 of 39



VISION | LANDSCAPE MASTERPLAN



- LEGEND
- 1. Sheltered bus zone
  - 2. Landscape terracing to negotiate level change and provide breakout spaces
  - 3. Entry feature planting & natural rock sculpture
  - 4. Seating amongst tree grove
  - 5. Staff parking area
  - 6. Sports court with running track around edge
  - 7. Swale garden with timber walkways across
  - 8. Terraced landscape to protect existing trees and provide outdoor classroom spaces
  - 9. Dry creek bed, environmental learning
  - 10. Agricultural and environmental learning
  - 11. Existing trees retained to provide shade and ambience to southern courtyard
  - 12. Assembly Point with Flag Pole
  - 13. Outdoor Exhibition Space
  - 14. Outdoor Fitness Courtyard
  - 15. Visitor Car Parking
  - 16. Informal Overflow Car Parking



Planning & Environment

Issued under the Environmental Planning and Assessment Act 1979

Approved Application No. SSD 8640

granted on the 2.0.DEC.2018

Signed [Signature]

Sheet No. 15 of 89

SCALE 1:500 @ A1

Copyright remains the property of Arcadia Landscape Architecture Pty Ltd. All other required dimensions are to be referred to and supplied by the landscape architect. All discrepancies to be referred to the project manager and Arcadia Landscape Architecture Pty Ltd prior to construction. Ensure compliance with the Building Code of Australia and all relevant Australian Standards and Authorities.



VISION | CULTURAL + HERITAGE ITEMS



**NSW** Planning & Environment  
Issued under the Environmental Planning and Assessment Act 1979  
Approved Application No. SSD 8640  
granted on the 20 DEC 2018  
Signed [Signature]  
Sheet No. 16 of 39

SCALE 1:500 @ A1

**LEGEND**

1. Memorial bricks to be set into entry wall
2. Picton High School Motif relocated to Hall entrance
3. Lone Pine relocated to northern forecourt for ANZAC Ceremonies
4. Yarning Circle with new stone seats
5. Existing Yarning Circle Seats to be relocated into educational learning zones
6. Totem Poles to be retained
7. Bush Tucker Garden to be relocated
8. Totem Poles to be relocated to the Environmental Educational Zone
9. Double Flag to be relocated to the northern forecourt for ANZAC Ceremonies
10. Picton Memorial Garden Sign relocated to Memorial Garden
11. Lest We Forget Plaque relocated to Memorial Garden
12. Private Thomson Plaque relocated to Memorial Garden
13. Flower Plaque relocated to Special Education Garden
14. Single Flag Pole Located to School Entry



VISION | LANDSCAPE SECTIONS

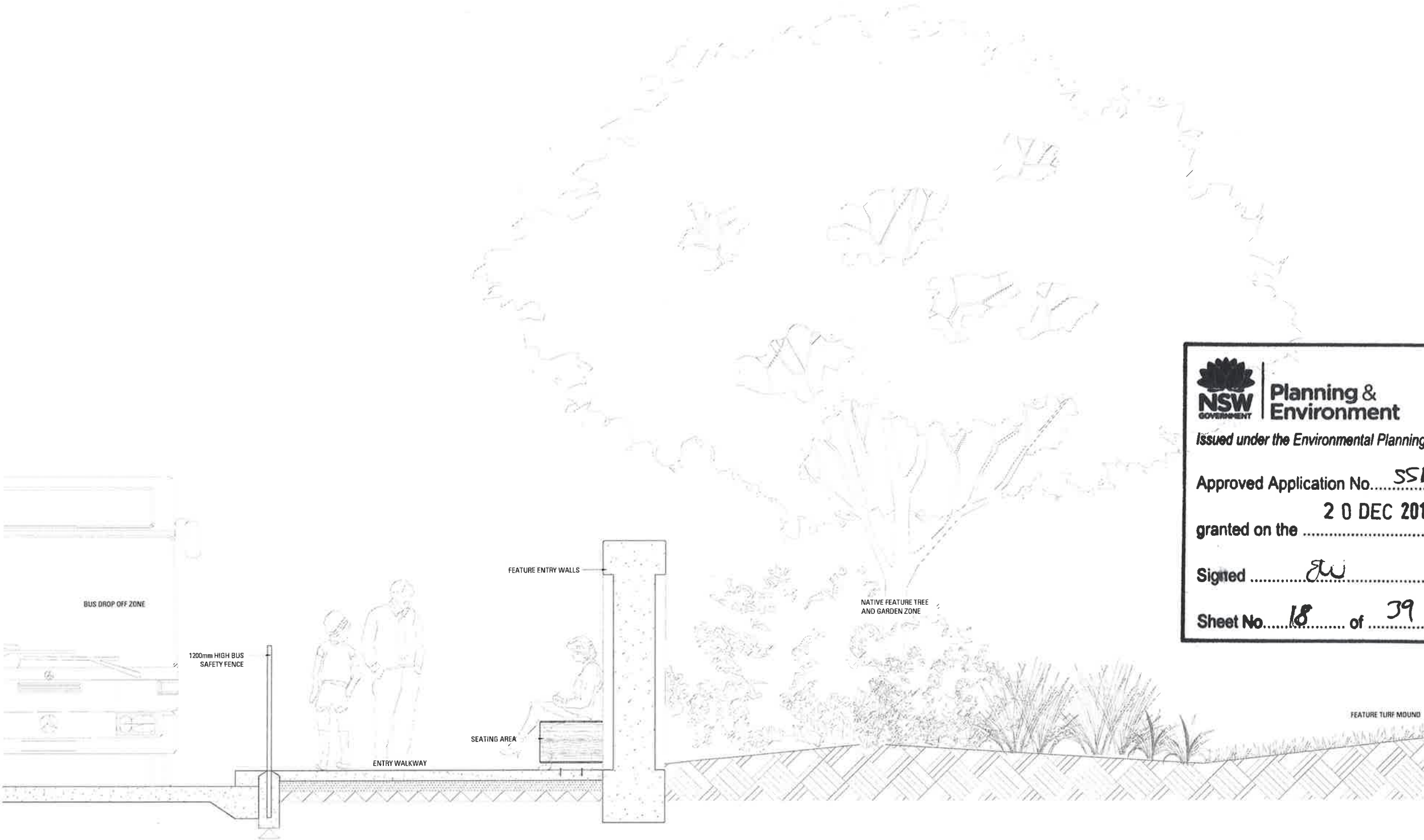


**NSW** Planning & Environment  
GOVERNMENT  
Issued under the Environmental Planning and Assessment Act 1979  
Approved Application No. SSD 8640  
20 DEC 2018  
granted on the .....  
Signed SW  
Sheet No. 17 of 39

0 10 20 30 40 50m  
SCALE 1:500 @ A1

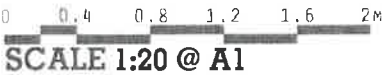


VISION | LANDSCAPE SECTIONS



SECTION A-A

**NSW GOVERNMENT** | **Planning & Environment**  
Issued under the Environmental Planning and Assessment Act 1979  
Approved Application No. SSD  
granted on the 20 DEC 2018  
Signed [Signature]  
Sheet No. 18 of 39





VISION | LANDSCAPE SECTIONS



Planning &  
Environment

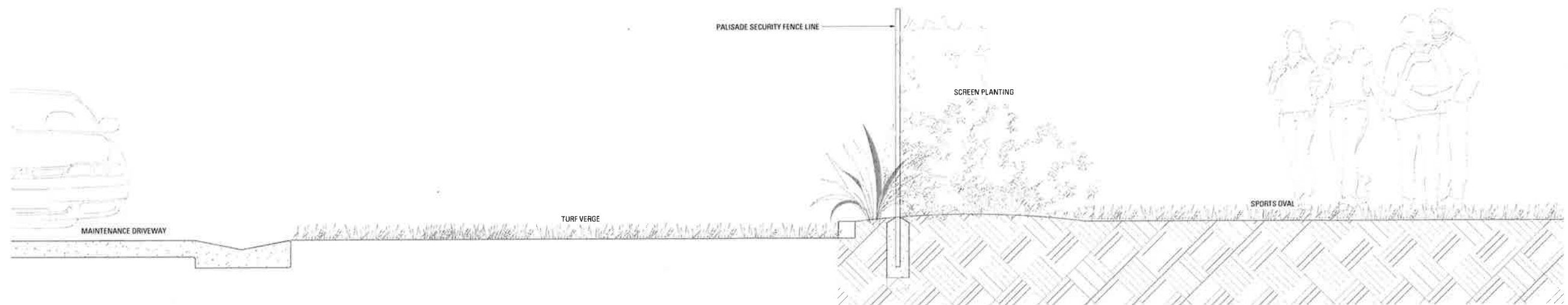
Issued under the Environmental Planning and Assessment Act 1979

Approved Application No. SSD 8640

granted on the 20 DEC 2018

Signed [Signature]

Sheet No. 19 of 39




SECTION B-B

0 0.4 0.8 1.2 1.6 2M  
SCALE 1:20 @ A1





VISION | LANDSCAPE SECTIONS



**Planning &  
Environment**

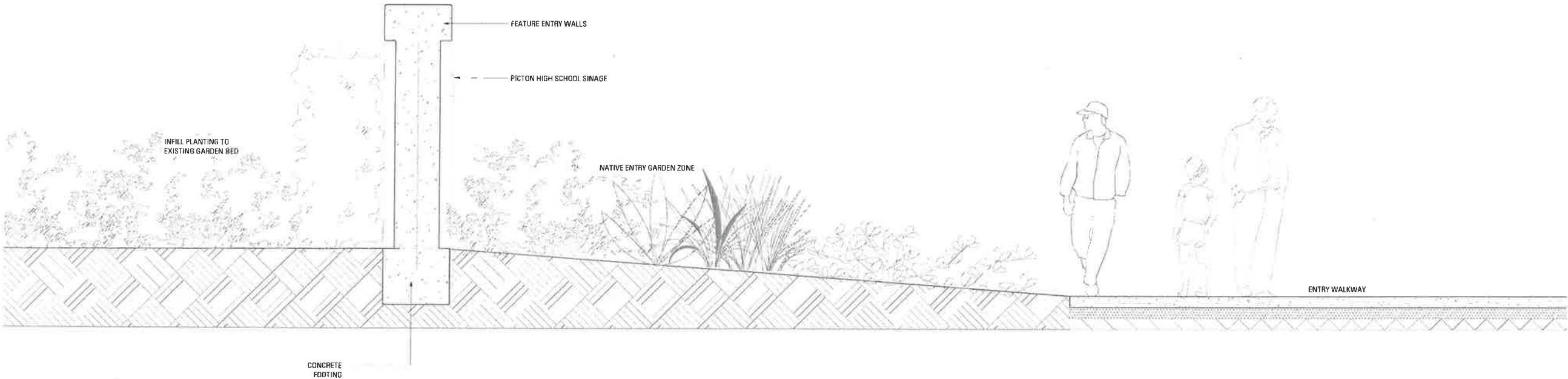
*Issued under the Environmental Planning and Assessment Act 1979*

Approved Application No. SSD 8640

granted on the 20 DEC 2018

Signed [Signature]

Sheet No. 20 of 39



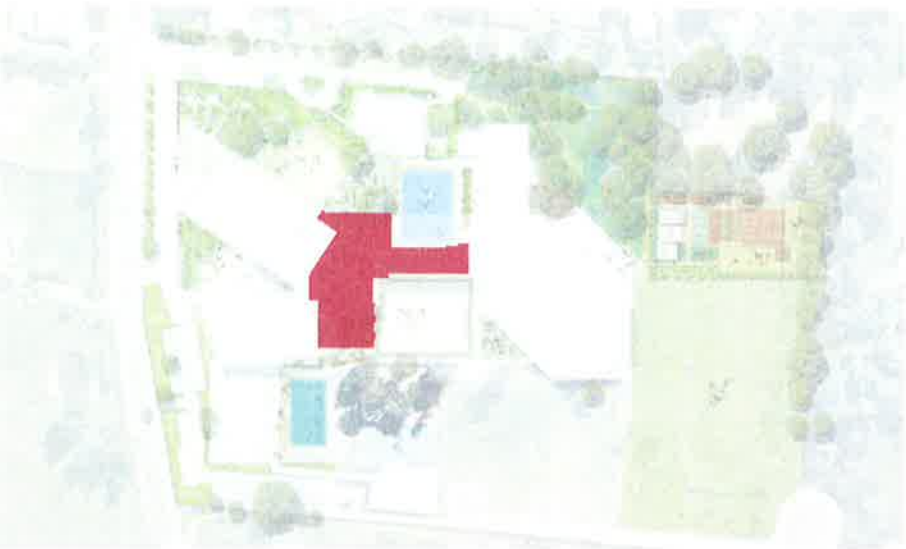
SECTION C-C





MATERIALS | PAVEMENT

PAVEMENT TYPE 1  
UNIT PAVEMENT



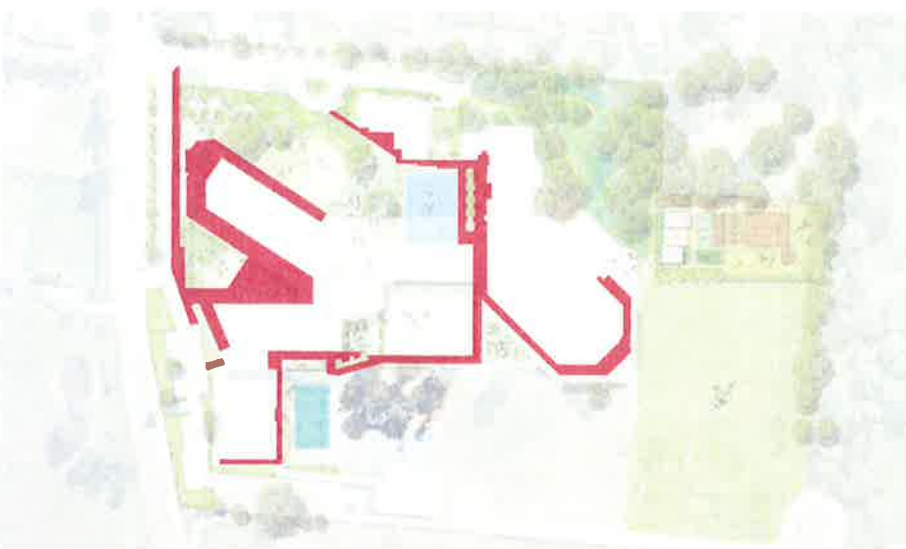
DESIGN INTENT +  
PERFORMANCE CRITERIA

- Mottled Neutrals
- Hard wearing and low maintenance

MATERIAL RESPONSE

- Exposed aggregate colour concrete unit pavers
- Sealed surface

PAVEMENT TYPE 2  
EXPOSED AGGREGATE COLOUR CONCRETE



DESIGN INTENT +  
PERFORMANCE CRITERIA

- Mottled Neutrals
- Hard wearing and low maintenance

MATERIAL RESPONSE

- Exposed aggregate colour concrete poured insitu

PAVEMENT TYPE 3  
GRANITIC GRAVEL




DESIGN INTENT +  
PERFORMANCE CRITERIA

- Natural surface
- Permeable and low maintenance

MATERIAL RESPONSE

- Granitic gravel

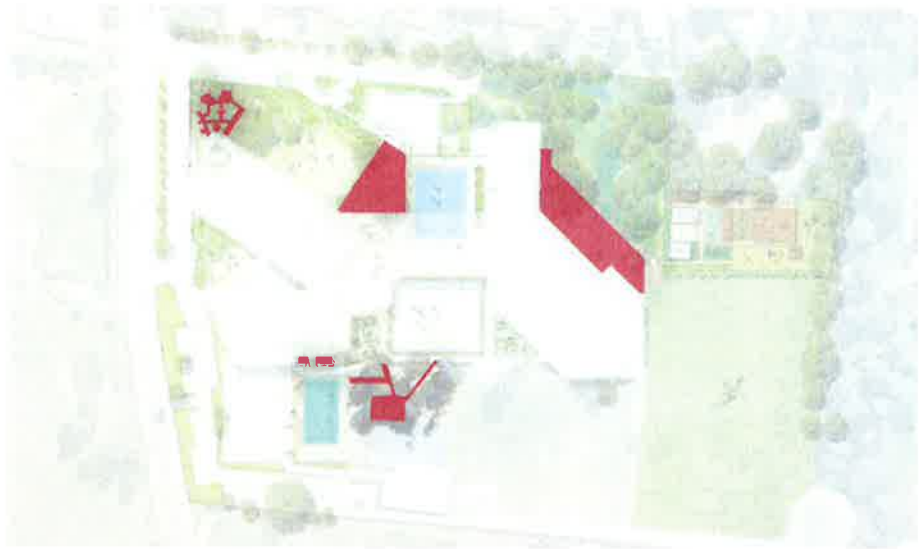


 **Planning & Environment**  
Issued under the Environmental Planning and Assessment Act 1979  
Approved Application No. SSD 8640  
granted on the 20 DEC 2018  
Signed SW  
Sheet No. 21 of 39



MATERIALS | PAVEMENT

PAVEMENT TYPE 4  
ECOTRIHEX UNIT PAVEMENT



DESIGN INTENT +  
PERFORMANCE CRITERIA

- Mottled Neutrals
- Permeable, hard wearing and low maintenance

MATERIAL RESPONSE

- Ecotrihex

PAVEMENT TYPE 5  
PLEXIPAVE ALLSPORT SURFACE



DESIGN INTENT +  
PERFORMANCE CRITERIA

- Multi-court surface
- Hard wearing and low maintenance

MATERIAL RESPONSE

- Plexipave Allsport

PAVEMENT TYPE 6  
SYNTHETIC TURF



DESIGN INTENT +  
PERFORMANCE CRITERIA

- Grass-look terrace
- Permeable, hard wearing and low maintenance

MATERIAL RESPONSE

- Synthetic Turf



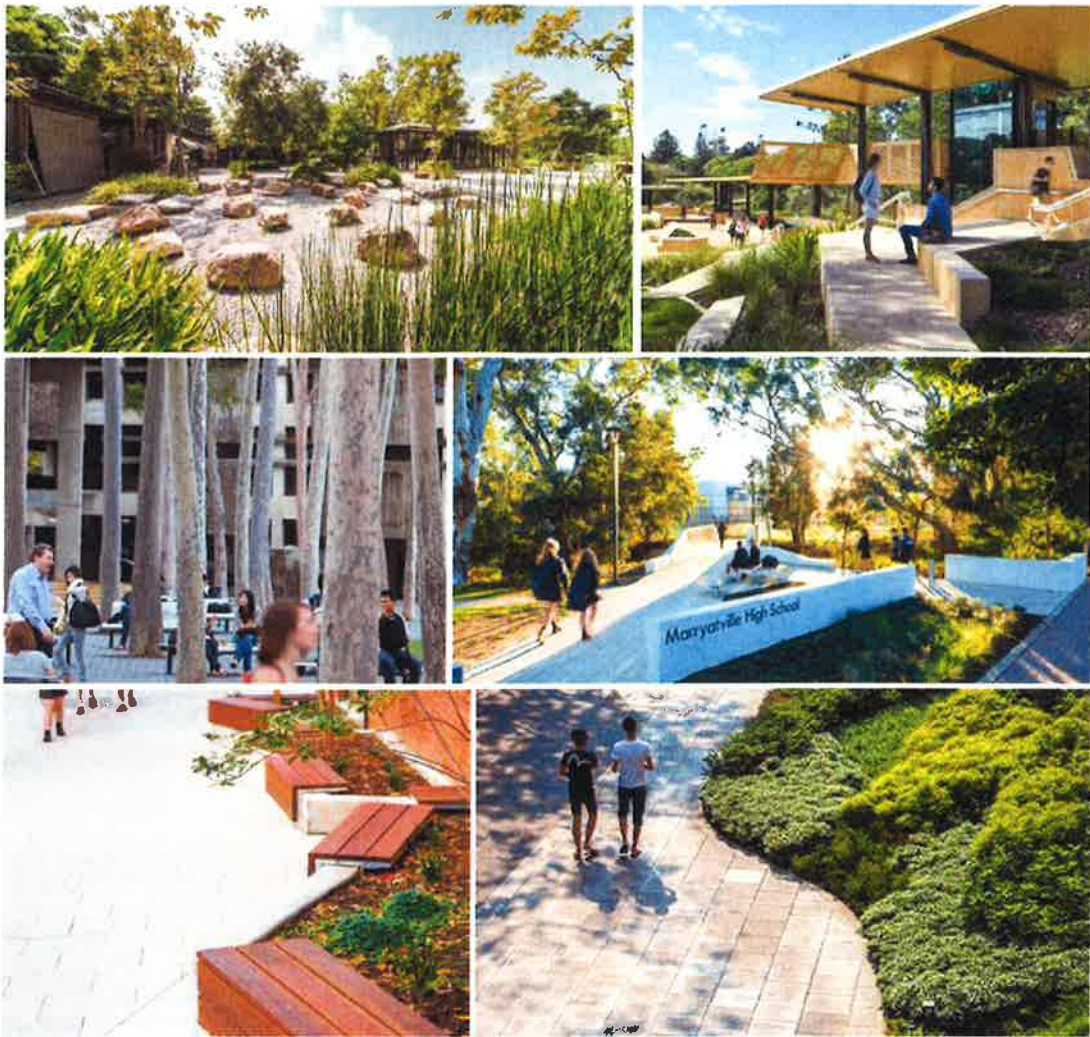
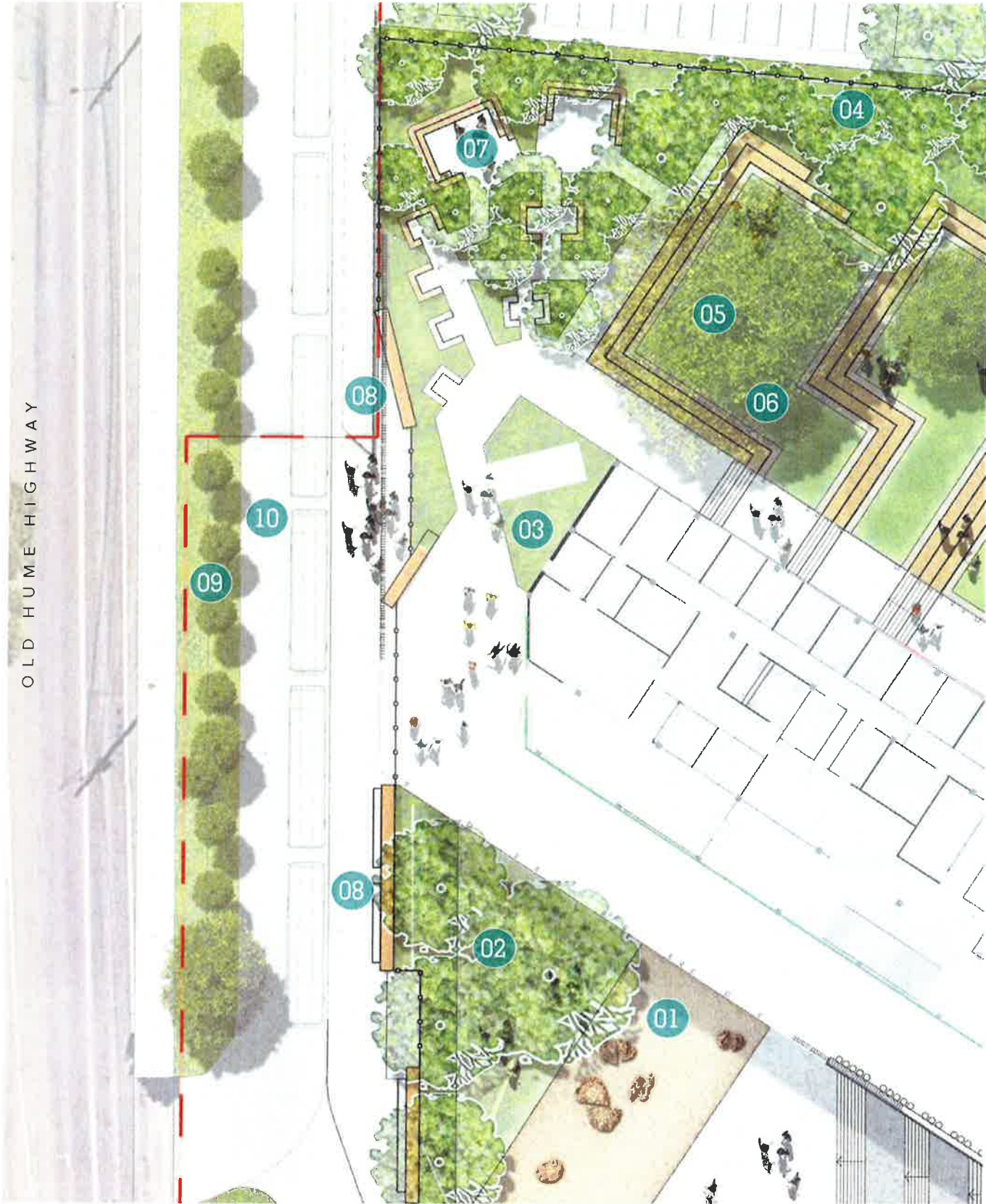
NEW Planning & Environment  
Issued under the Environmental Planning and Assessment Act 1979  
Approved Application No. SSD 8640  
granted on the 20 DEC 2018  
Signed [Signature]  
Sheet No. 22 of 39  
PREPARED BY Arcadia Landscape Architecture DATE Feb 2018

CLIENT Picton High School  
ARCHITECT Billard Leece  
ISSUE B  
SCALE

Copyright remains the property of Arcadia Landscape Architecture Pty Ltd. All other required dimensions are to be referred to and supplied by the landscape architect. All discrepancies to be referred to the project manager and Arcadia Landscape Architecture Pty Ltd prior to construction. Ensure compliance with the Building Code of Australia and all relevant Australian Standards and Authorities.



DETAIL | ENTRY FORECOURT



LEGEND

1. Natural split rock sculpture
2. Native feature trees
3. Shaded mixed fern planting
4. Buffer tree planting
5. Existing significant feature tree
6. Turfed areas with sandstone bench seating
7. Diversely scaled nooks with bench seating
8. Feature Entry Walls
9. Existing buffer tree planting
10. Bus zone



Planning & Environment

Issued under the Environmental Planning and Assessment Act 1979

Approved Application No. SSD 8640

granted on the 20 DEC 2018

Signed [Signature]

Sheet No. 23 of 39

SCALE 1:200 @ A1





MATERIALS | ENTRY FORECOURT



WALL TYPE  
CONCRETE AND TIMBER SEATING WALL



- DESIGN INTENT +  
PERFORMANCE CRITERIA
- Classic and neutral character
  - Hard wearing and low maintenance

- MATERIAL RESPONSE
- Dressed hardwood timber
  - Steel frame
  - Formed concrete structural planter walls

WALL TYPE  
OFF-FORM CONCRETE WALL



- DESIGN INTENT +  
PERFORMANCE CRITERIA
- Textured feature wall
  - Hard wearing and low maintenance

- MATERIAL RESPONSE
- Off-form concrete

STRUCTURE TYPE  
FEATURE ROCK BOULDER



- DESIGN INTENT +  
PERFORMANCE CRITERIA
- Natural sculpture
  - Hard wearing and low maintenance

- MATERIAL RESPONSE
- Split sandstone boulder



Planning &  
Environment

Issued under the Environmental Planning and Assessment Act 1979

Approved Application No... **SSD 8640**

granted on the **2.0 DEC. 2018**

Signed

**2**

Sheet No. **24**

of **39**





DETAIL | TERRACED LAWNS



LEGEND

- 1. Terraced seating walls
- 2. Significant feature tree
- 3. Shaded mixed fern planting around nooks and terraces
- 4. Buffer tree planting
- 5. Grass terrace
- 6. Synthetic turf assembly terrace
- 7. Diversely scaled nooks with bench seating
- 8. Drop-off and pick-up zone
- 9. Staff and visitor parking
- 10. Assembly Point - Flag Pole



Planning & Environment

Issued under the Environmental Planning and Assessment Act 1979

Approved Application No. SSD 8640

granted on the 20 DEC 2018

Signed [Signature]

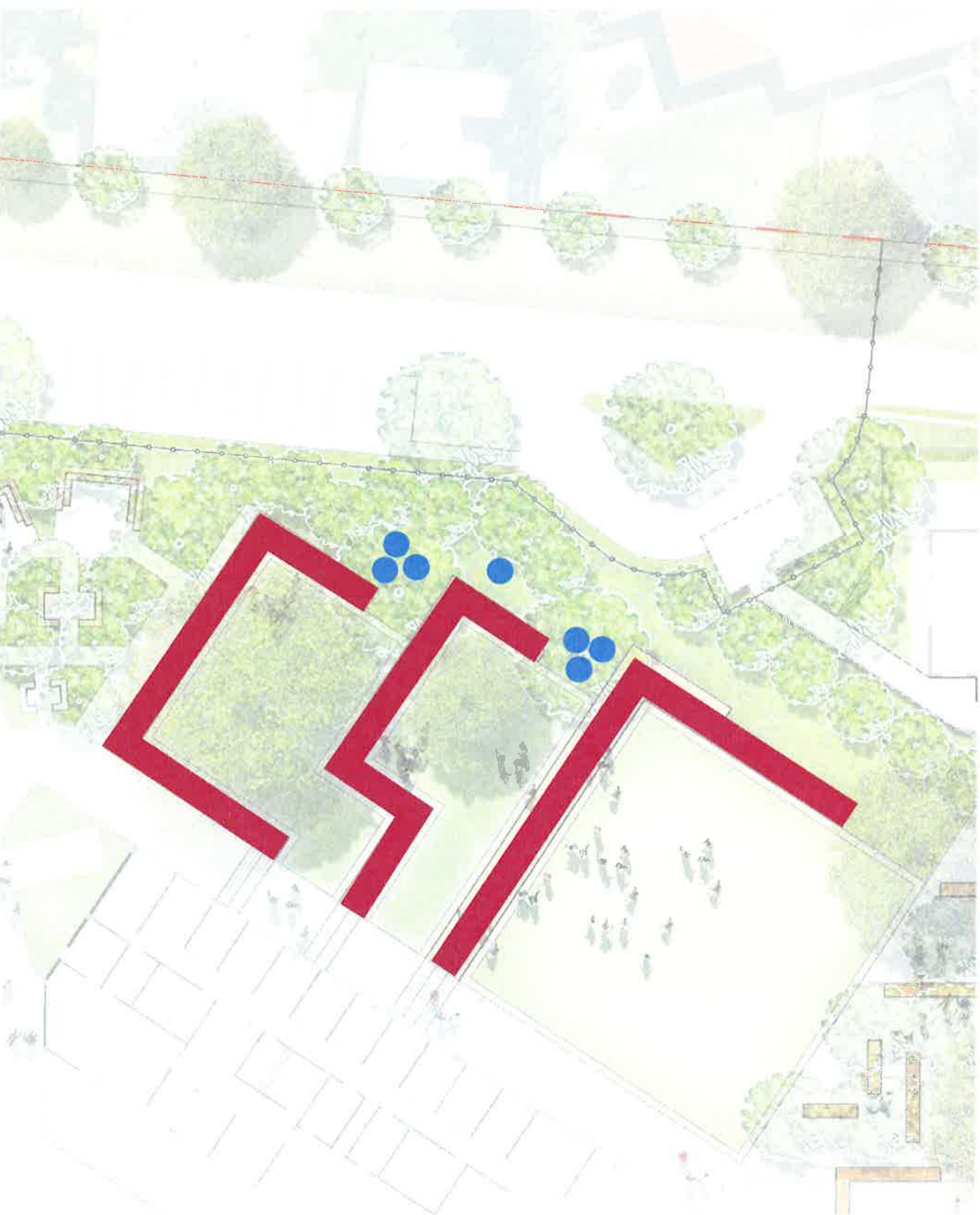
Sheet No. 25 of 39

SCALE 1:200 @ A1





MATERIALS | TERRACED LAWNS



WALL TYPE  
SANDSTONE BLOCK TERRACES



DESIGN INTENT +  
PERFORMANCE CRITERIA

- Natural character retaining structure
- Hard wearing and low maintenance

MATERIAL RESPONSE

- Sandstone Blocks



STRUCTURE TYPE  
ROCK BOULDER




DESIGN INTENT +  
PERFORMANCE CRITERIA

- Retaining element with natural character
- Hard wearing and low maintenance

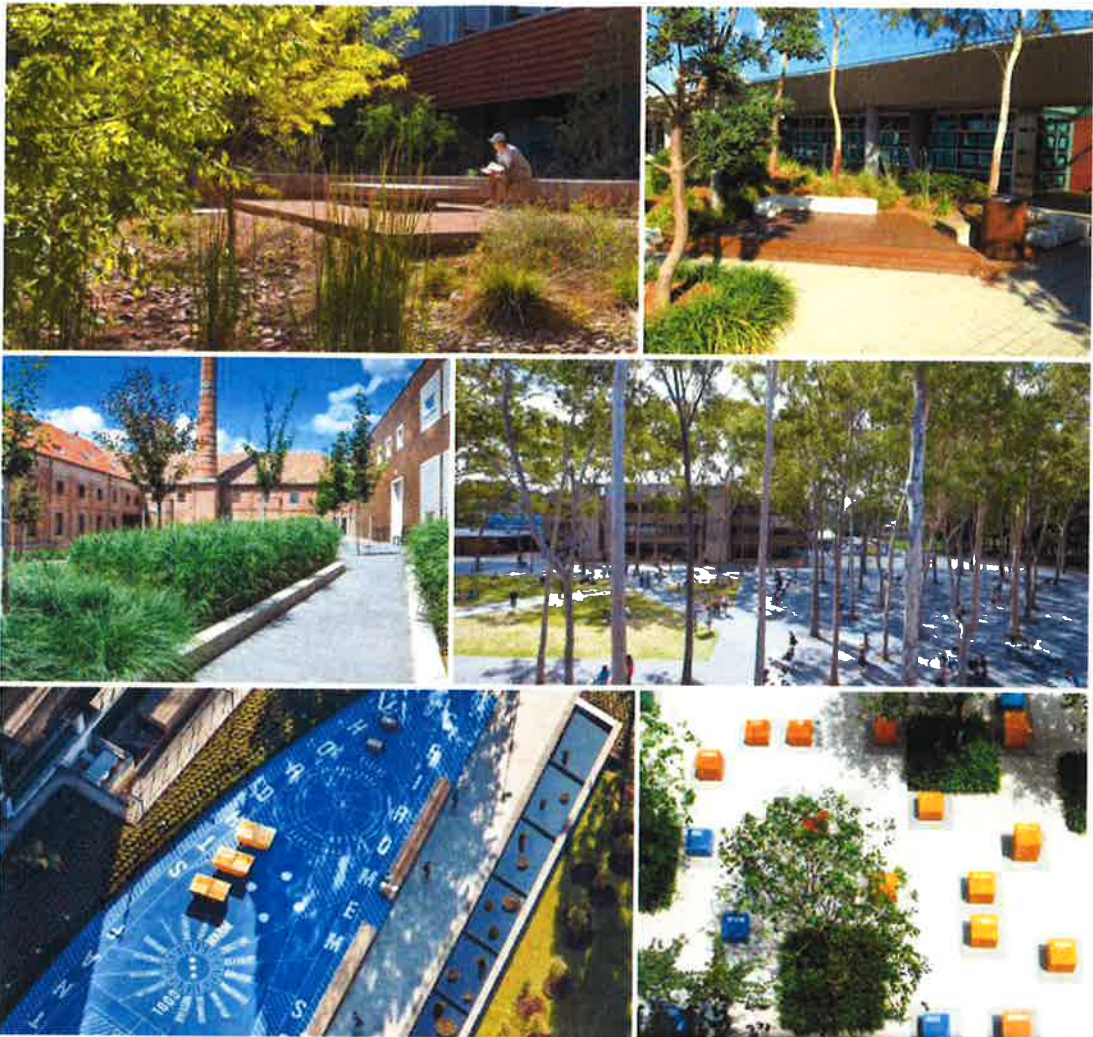
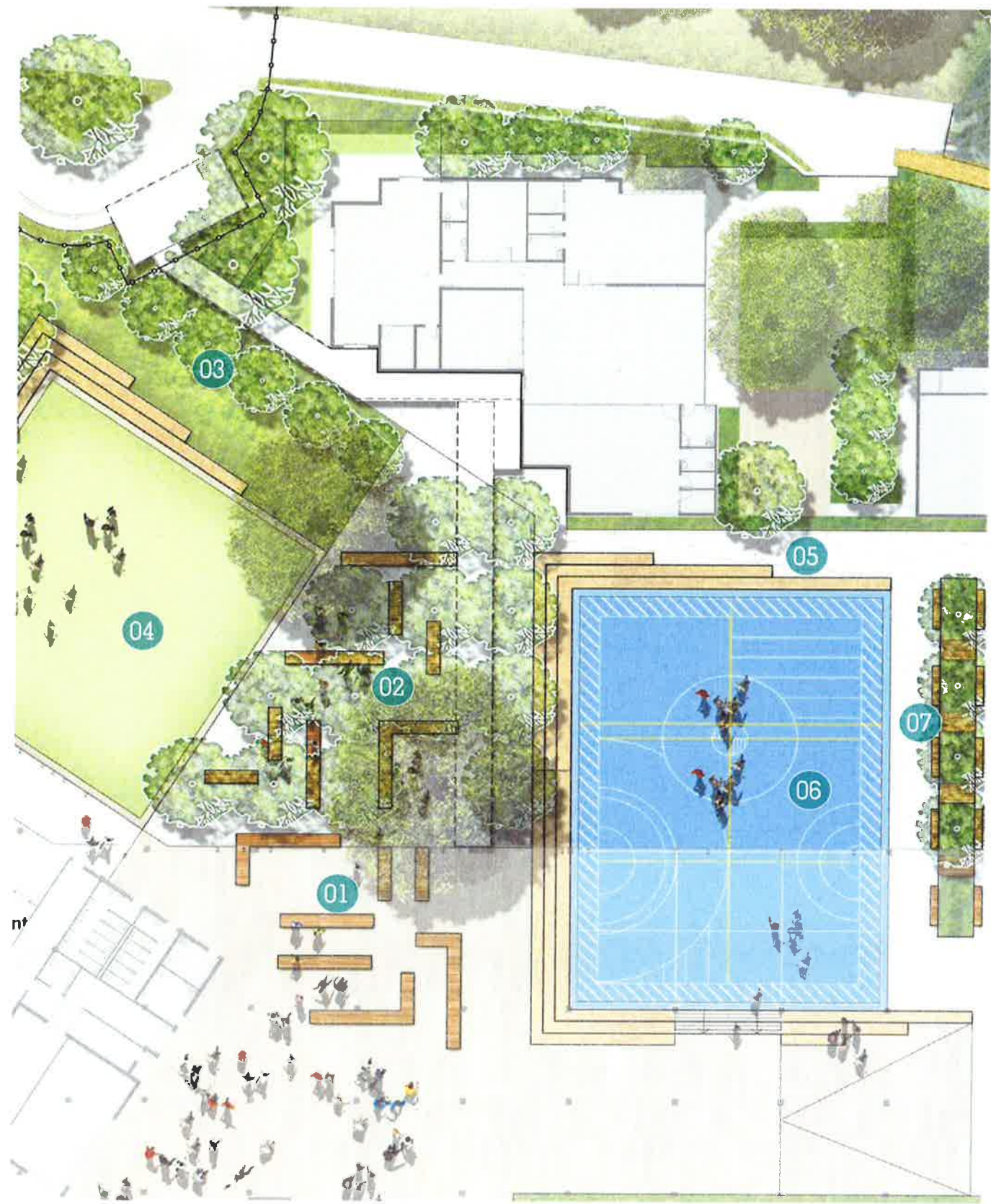
MATERIAL RESPONSE

- Granite rock boulders

 **Planning & Environment**  
Issued under the Environmental Planning and Assessment Act 1979  
Approved Application No. SSD 8640  
granted on the 20 DEC 2018  
Signed EW  
Sheet No. 26 of 39







LEGEND

1. Sheltered seating area
2. Significant feature trees
3. Buffer tree planting
4. Synthetic turf assembly area
5. Seating steps surrounding sports court
6. Sports court with running track around edge
7. Swale garden with timber walkways across



Planning & Environment

Issued under the Environmental Planning and Assessment Act 1979

Approved Application No. SSD

granted on the 20 DEC 2018

Signed [Signature]

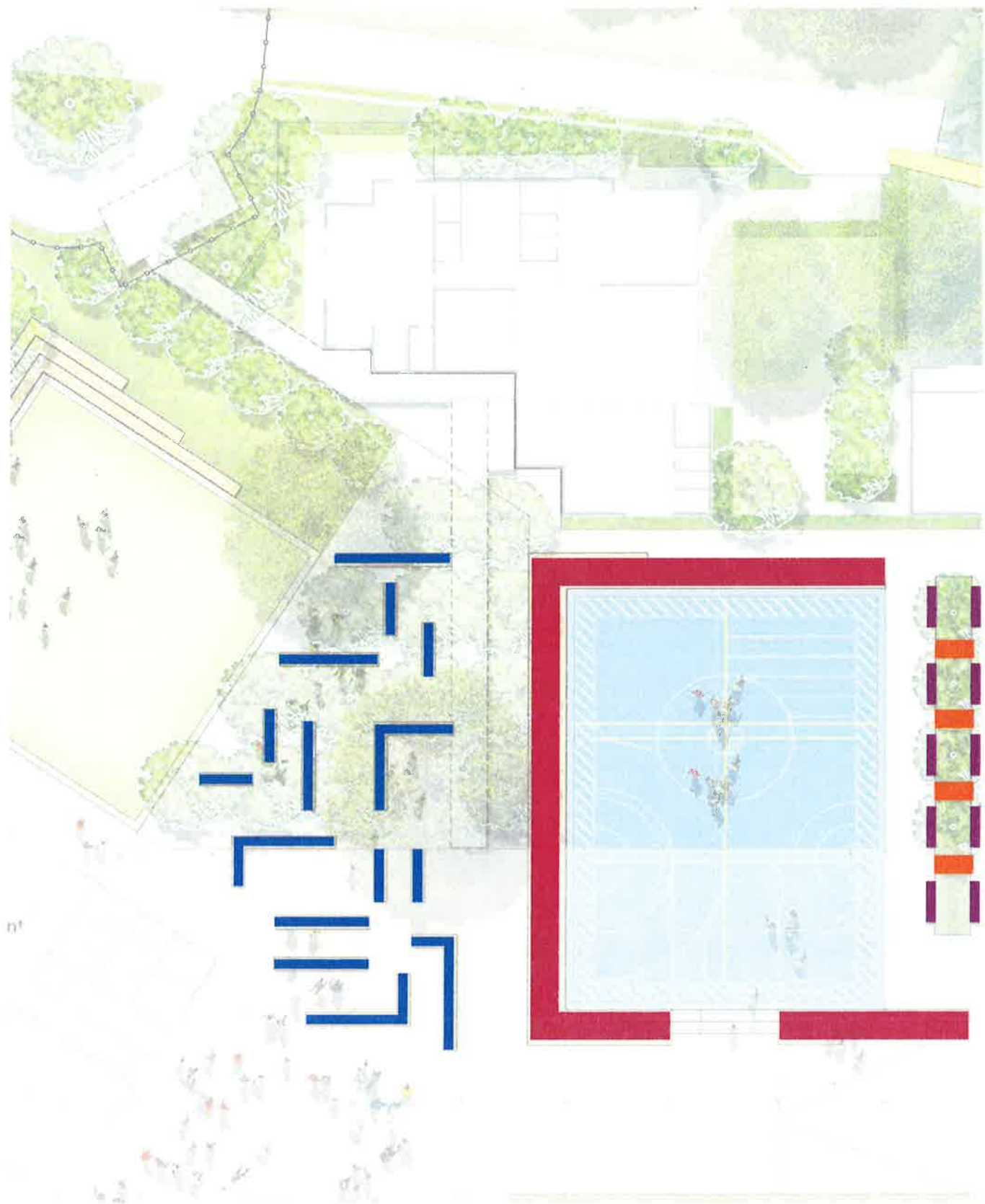
Sheet No. 27 of 39

SCALE 1:200 @ A1





MATERIALS | SOCIAL HUB



WALL TYPE  
CONCRETE SEATING STEPS



DESIGN INTENT +  
PERFORMANCE CRITERIA

- Classic character
- Hard wearing and low maintenance

MATERIAL RESPONSE

- Insitu concrete

**NSW GOVERNMENT** | **Planning & Environment**  
Issued under the Environmental Planning and Assessment Act 1979  
Approved Application No. 55D 8640  
granted on the 2.0 DEC 2018  
Signed EW  
Sheet No. 28 of 29

STRUCTURE TYPE  
WOOD COMPOSITE DECK



DESIGN INTENT +  
PERFORMANCE CRITERIA

- Natural character
- Hard wearing and low maintenance

MATERIAL RESPONSE

- Timber Tech Terrain Decking

FURNITURE TYPE  
TIMBER BENCH SEATS

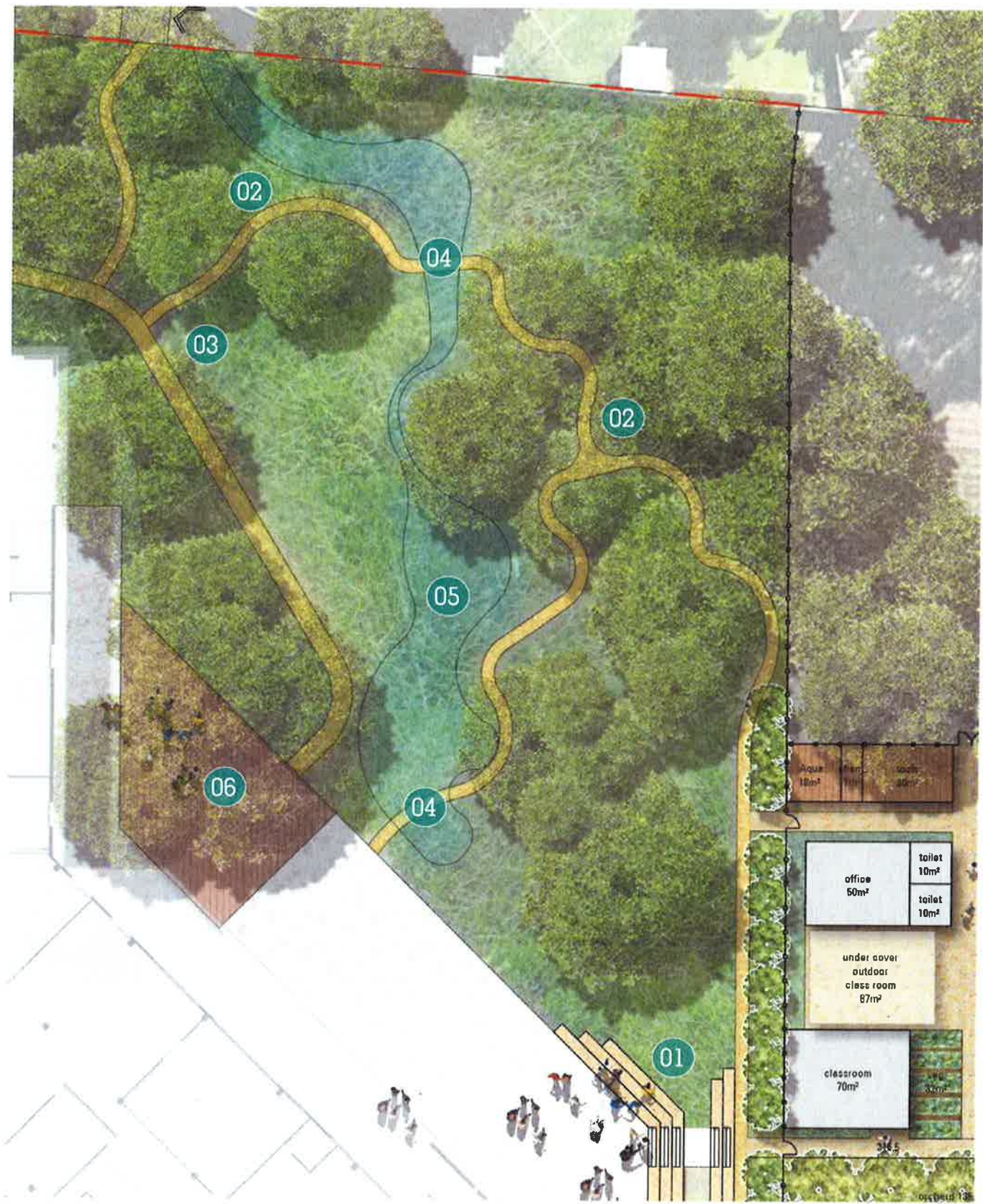


FURNITURE TYPE  
TABLES & BENCHES





DETAIL | EDUCATIONAL TRAIL



LEGEND

1. Terraced outdoor classroom
2. Meandering nature trail
3. Nature trail outdoor classroom
4. Timber bridge over swale
5. Dry creek bed
6. Outdoor deck surrounding existing trees



Planning & Environment

Issued under the Environmental Planning and Assessment Act 1979

Approved Application No. **SSD 8640**

Valid on the **20 DEC 2018**

Signed **[Signature]**

Sheet No. **29** of **79**

SCALE 1:200 @ A1





MATERIALS | EDUCATIONAL TRAIL



WALL TYPE  
SANDSTONE BLOCK TERRACES



- DESIGN INTENT +  
PERFORMANCE CRITERIA
- Natural character retaining structure
  - Hard wearing and low maintenance

- MATERIAL RESPONSE
- Sandstone Blocks

STRUCTURE TYPE  
WOOD COMPOSITE DECK



- DESIGN INTENT +  
PERFORMANCE CRITERIA
- Natural character
  - Hard wearing and low maintenance

- MATERIAL RESPONSE
- Timber Tech Terrain Decking

SURFACE TYPE  
SANDSTONE AGGREGATES



- DESIGN INTENT +  
PERFORMANCE CRITERIA
- Natural character
  - Hard wearing and low maintenance

- MATERIAL RESPONSE
- Sandstone aggregates

 **Planning & Environment**  
Issued under the Environmental Planning and Assessment Act 1979

Approved Application No. SSD 8640  
granted on the 20 DEC 2018

Signed aw  
Sheet No. 30 of 39



DETAIL | AGRICULTURAL & ENVIRONMENTAL LEARNING



**LEGEND**

- 1. Existing paddock
- 2. Screening hedge
- 3. Existing trees to be retained
- 4. Adjacent sports field
- 5. Terraced outdoor classroom
- 6. Educational nature trail

0 4 8 12 16 20m  
SCALE 1:200 @ A1

**NSW GOVERNMENT** | **Planning & Environment**

Issued under the Environmental Planning and Assessment Act 1979

Approved Application No. SSD 8640

granted on the 20 DEC 2018

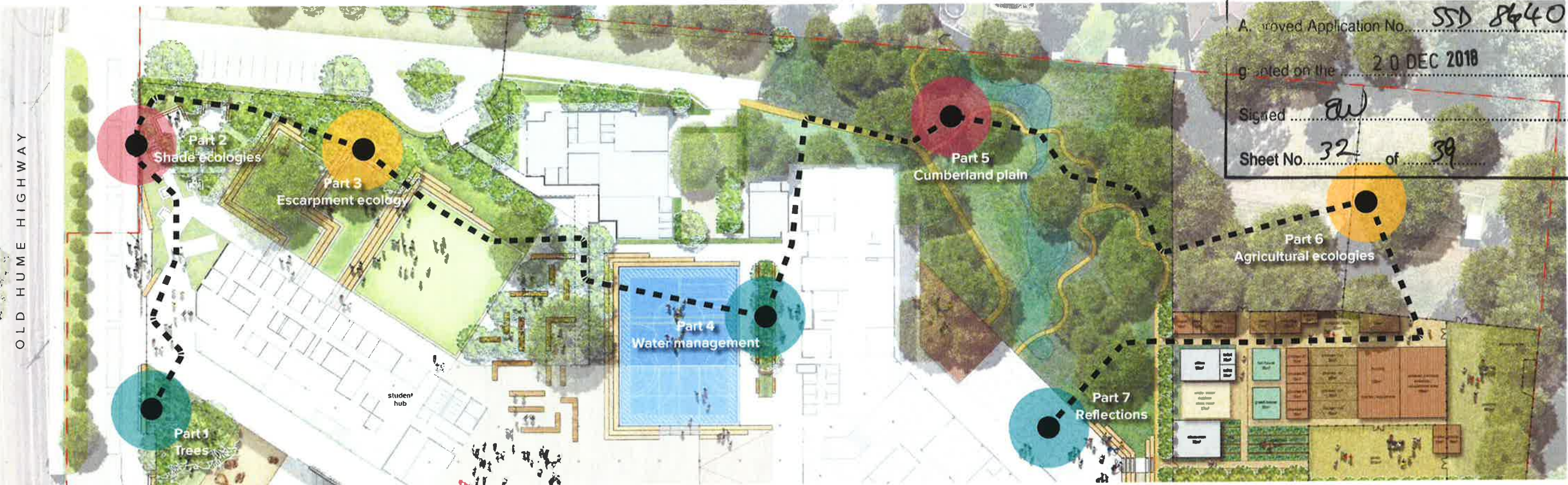
Signed EW

Sheet No. 31 of 39



# VISION | NATURE TRAIL

Approved Application No. **SSD 8640**  
Granted on the **20 DEC 2018**  
Signed **[Signature]**  
Sheet No. **32** of **39**



## PART 1 - TREES

The nature trail will help to introduce the students to a wider world of environmental awareness and stewardship.

They will begin by learning about endemic tree types and gain an appreciation for some of the endangered and significant species present.

## PART 2 - SHADE ECOLOGIES

Continuing along the trail the students will learn about the variety of flora that thrives in cooler parts of the local ecological system.

## PART 3 - ESCARPMENT ECOLOGIES

Students can learn about the many grasses, drier groundcovers and their many uses as a food source and craft material such as the versatile *Iomandra longifolia*.

## PART 4 - SWALES AND WATER MANAGEMENT

Introduction and familiarisation with the processes of water and how that integrates with the land. This provides students a starting point in their relationship with water.

## PART 5 - CUMBERLAND PLAIN

Introducing future stewards to the existing ecological typologies which make up the cumberland plain bioregion by showing those different planting groups at work and how they integrate with one another alongside providing habitat for the endemic fauna (providing another layer of understanding for the students).

## PART 6 - AGRICULTURAL ECOLOGIES

Prior parts of the trail will give students a basis for further learning about the cultivation of land, techniques (indigenous and modern), their outputs and impacts.

## PART 7 - REFLECTIONS

Upon completion of the trail students will revise and review the lessons at each part as well as giving a platform for critical thought by students into how human impact and agriculture can be recultured, reconsidered and improved.



SOFTSCAPE | PLANTING CHARACTER



Planning & Environment

Issued under the Environmental Planning and Assessment Act 1979

Approved Application No. 55D8640

20 DEC 2018

granted on the

Signed 

Sheet No. 33

TREES



SHRUBS

GRASSES



GROUND COVERS





SOFTSCAPE | TREE SIZE SPECIFICATION & FORMAL SOFTSCAPE AREAS








TOTAL NUMBER OF PROPOSED TREES 79

	POT SIZE	HEIGHT	QUANTITY
	75L	2 - 2.5m	26
	100L	2.5 - 3.5m	15
	200L	3.5 - 4.5m	20
	400L	4.5 - 6m	17



TOTAL AREA OF SOFTSCAPE 18940m<sup>2</sup>

	AREA
 Garden Bed	1907m <sup>2</sup>
 Turf	11390m <sup>2</sup>
 Revegetation / Supplementary Planting	4083m <sup>2</sup>
 Existing Garden Beds	1705m <sup>2</sup>

**Planning & Environment**

Issued under the Environmental Planning and Assessment Act 1979


Approved Application No. SSD 8240

granted on the 20 DEC 2018

Signed aw

Sheet No. 34 of 39




**Planning & Environment**  
 Issue: ... the Environmental Planning and Assessment Act 1979  
 Approved: ... No SSD 8640  
 granted on the 20 DEC 2018  
 Signed: [Signature]  
 Sheet No. 35 of 39



1 - EXISTING FLAGPOLE TO BE RE-LOCATED

2 - SOFT LANDSCAPING ALONG SECURITY FENCING

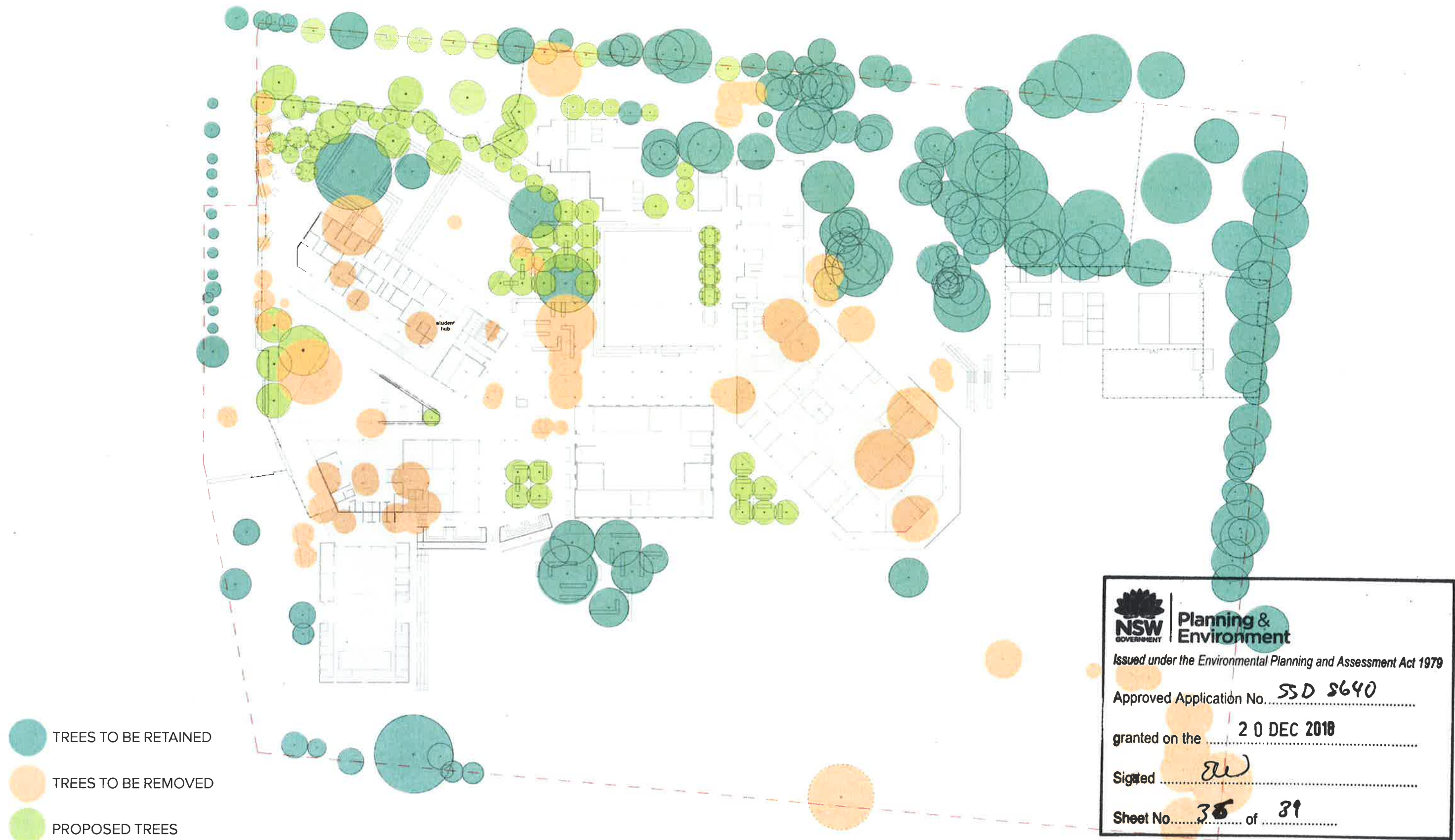
3 - BUSHTUCKER GARDEN

4 - COMMUNITY GARDEN

5 - MEMORIAL BRICKS TO BE RE-INSTATED



APPROACH | TREE RETENTION + REMOVAL STRATEGY

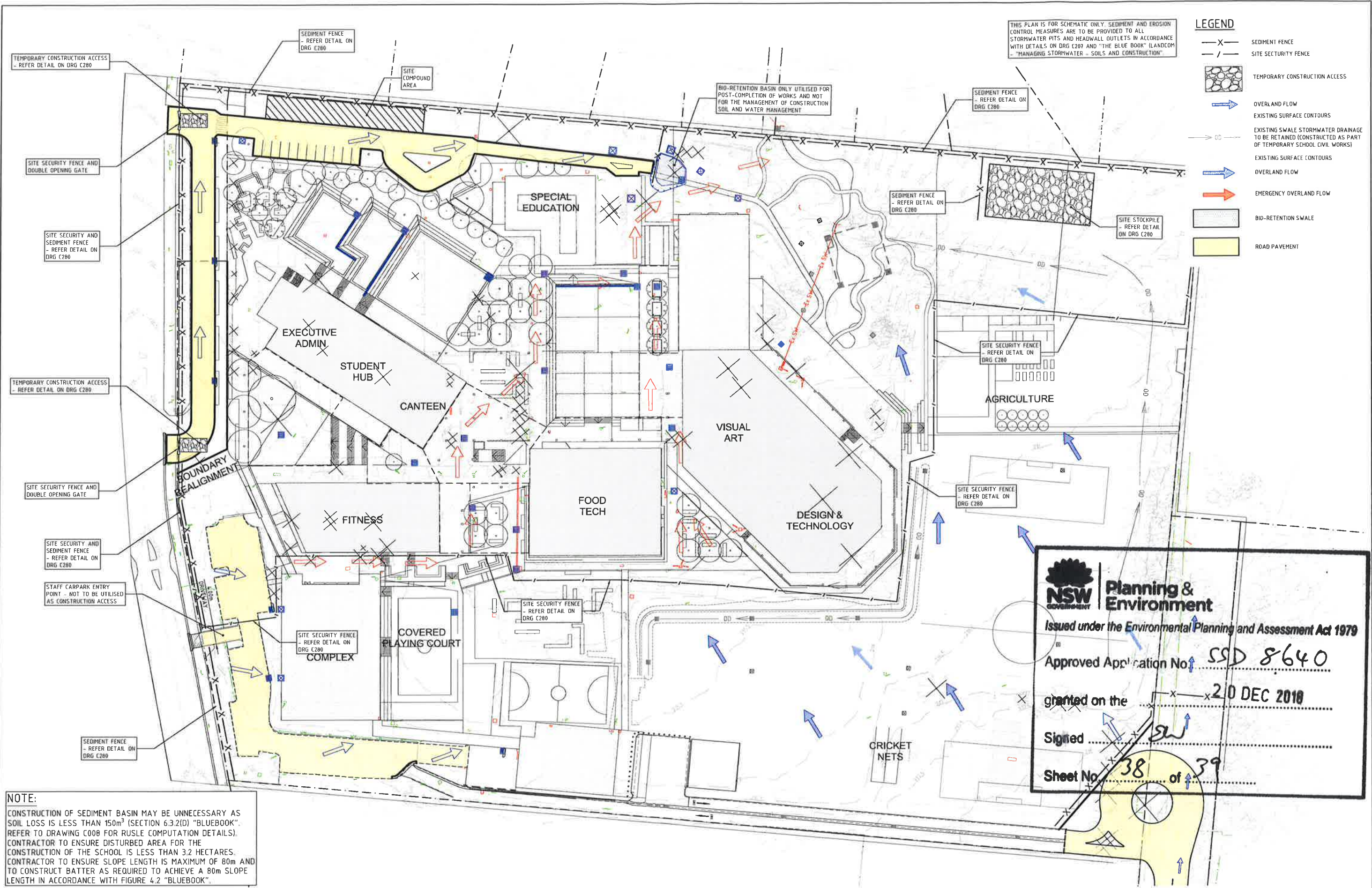


**NSW GOVERNMENT** | **Planning & Environment**  
Issued under the Environmental Planning and Assessment Act 1979  
Approved Application No. **SSD 8640**  
granted on the **20 DEC 2018**  
Signed *[Signature]*  
Sheet No. **36** of **39**









**NOTE:**  
CONSTRUCTION OF SEDIMENT BASIN MAY BE UNNECESSARY AS SOIL LOSS IS LESS THAN 150m<sup>3</sup> (SECTION 6.3.2(D) "BLUEBOOK". REFER TO DRAWING C008 FOR RUSLE COMPUTATION DETAILS). CONTRACTOR TO ENSURE DISTURBED AREA FOR THE CONSTRUCTION OF THE SCHOOL IS LESS THAN 3.2 HECTARES. CONTRACTOR TO ENSURE SLOPE LENGTH IS MAXIMUM OF 80m AND TO CONSTRUCT BATTER AS REQUIRED TO ACHIEVE A 80m SLOPE LENGTH IN ACCORDANCE WITH FIGURE 4.2 "BLUEBOOK".

COPYRIGHT				All rights reserved					
These drawings, plans and specifications and the copyright therein are the property of the Bonacci Group and must not be used, reproduced or copied, wholly or in part without the written permission of the Bonacci Group.									
Rev	Description	Date	By	App	Rev	Description	Date	By	App

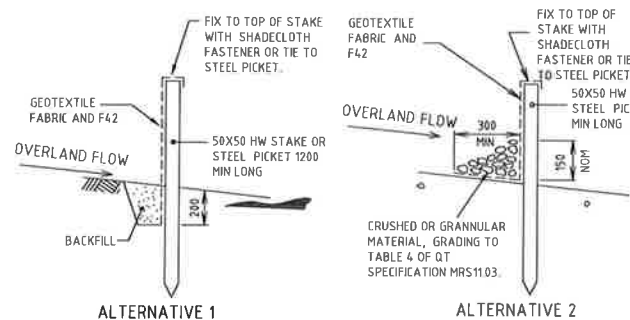
SCALE 1:500

**BONACCI**  
BONACCI GROUP (NSW) Pty Ltd  
ABN 29 102 710 352  
Consulting Engineers Structural - Civil - Infrastructure  
Level 6, 37 York Street, Sydney, NSW 2000 Australia  
Tel: +61 2 8247 8400 Fax: +61 2 8247 8444  
sydney@bonaccigroup.com  
www.bonaccigroup.com

Project Name: PICTON HIGH SCHOOL REDEVELOPMENT PICTON, NSW 2571  
Drawing Title: CONCEPT SEDIMENT AND EROSION CONTROL PLAN

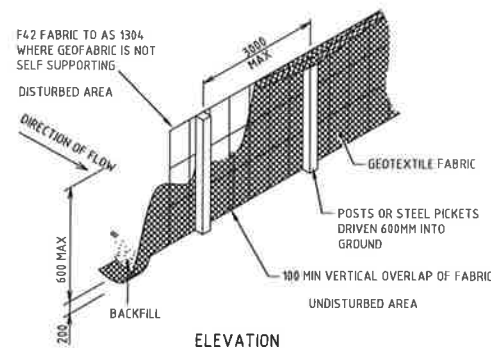
SCHEMATIC DESIGN			
Designed	JF	Project Director Approved	Date
Drawn	JF		
Scale	1:500	Project Ref	Drawing No
Date	NOV 2017	20 21888 01	C005
Sheet	A1		P2





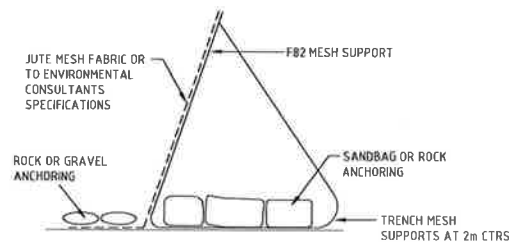
ALTERNATIVE 1

ALTERNATIVE 2



### SEDIMENT FENCE

NOT TO SCALE

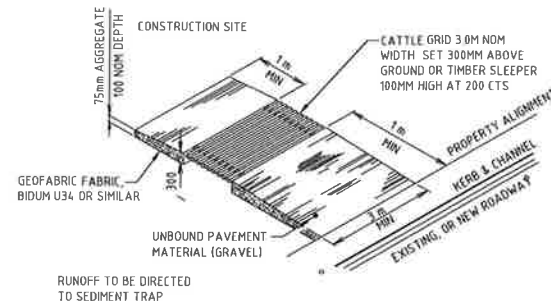


### ALTERNATIVE SEDIMENT FENCE

NOT TO SCALE

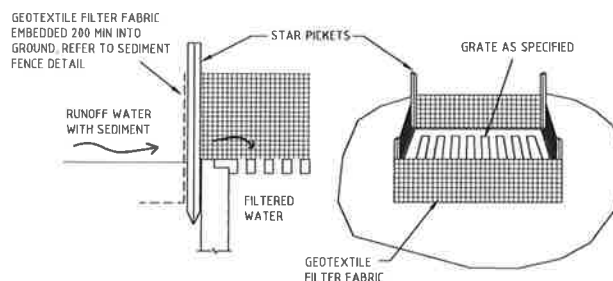
#### ALTERNATIVE SEDIMENT FENCE NOTES

1. INSTALL THIS TYPE OF SEDIMENT FENCE WHEN USE OF SUPPORT POSTS IS NOT DESIRABLE OR NOT POSSIBLE. SUCH CONDITIONS MIGHT APPLY, FOR EXAMPLE, WHERE APPROVAL IS GRANTED FROM THE APPROPRIATE AUTHORITIES TO PLACE THESE FENCES IN HIGHLY SENSITIVE ESTUARINE AREAS.
2. USE BENT TRENCH MESH TO SUPPORT THE F82 WELDED MESH FACING AS SHOWN ON THE DRAWING ABOVE. ATTACH THE JUTE MESH TO THE WELDED MESH FACING USING UV-RESISTANT CABLE TIES.
3. STABILISE THE WHOLE STRUCTURE WITH SANDBAG OR ROCK ANCHORING OVER THE TRENCH MESH AND THE LEADING EDGE OF THE JUTE MESH. THE ANCHORING SHOULD BE SUFFICIENTLY LARGE TO ENSURE STABILITY OF THE STRUCTURE IN THE DESIGN STORM EVENT, USUALLY THE 10 YEAR EVENT.



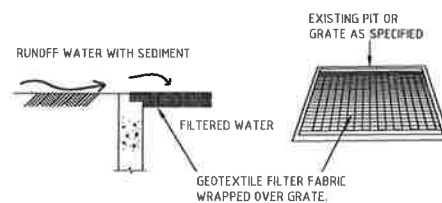
### TEMPORARY CONSTRUCTION VEHICLE ENTRY/EXIT SEDIMENT TRAP

NOT TO SCALE



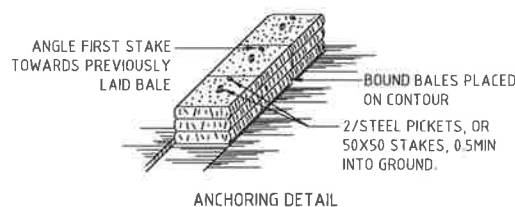
### GEOTEXTILE PIT FILTER 1

NOT TO SCALE



### GEOTEXTILE PIT FILTER 2

NOT TO SCALE

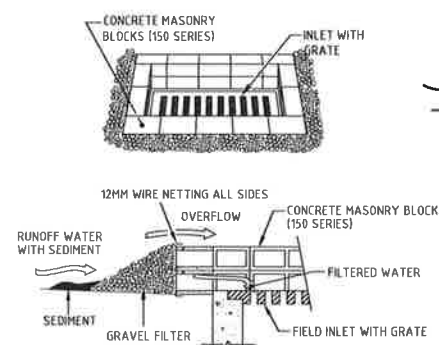


### STRAW BALE BANK SEDIMENT CONTROL

NOT TO SCALE

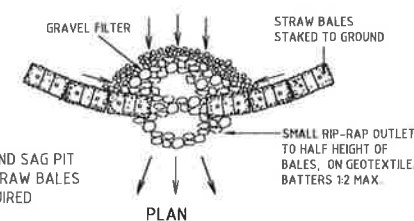


NOTE: SURROUND SAG PIT WITH STRAW BALES AS REQUIRED



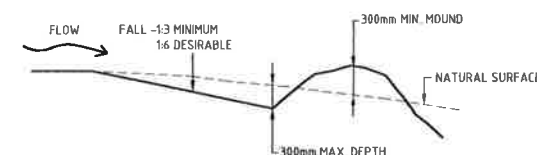
### FIELD INLET SEDIMENT TRAP

NOT TO SCALE



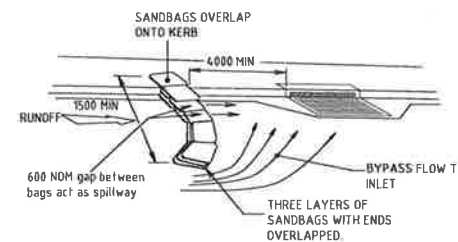
### STRAW BALE AND STONE TRAP SEDIMENT CONTROL (CONCENTRATE FLOW)

NOT TO SCALE



### CATCH DRAIN

NOT TO SCALE



### ON GRADE KERB INLET SEDIMENT TRAP

NOT TO SCALE

**NSW GOVERNMENT** | **Planning & Environment**  
 Issued under the Environmental Planning and Assessment Act 1979  
 Approved Application No. **SSA 8640**  
 granted on the **20 DEC 2018**  
 Signed *[Signature]*  
 Sheet No. **39** of **39**

COPYRIGHT  
 These drawings, plans and specifications and the copyright therein are the property of the Bonacci Group and must not be used, reproduced or copied, wholly or in part without the written permission of the Bonacci Group.

PA: **NON-STRUCTURAL DESIGN** 09.02.18 CS

Rev	Description	Date	By	App	Rev	Description	Date	By	App	Rev	Description	Date	By	App

**BONACCI**  
 BONACCI GROUP (NSW) Pty Ltd  
 ABN 29 102 716 352  
 Consulting Engineers, Structural - Civil - Infrastructure  
 Level 6, 37 York Street, Sydney, NSW 2000 Australia  
 Tel: +61 2 8247 8400 Fax: +61 2 8247 8444  
 info@bonaccigroup.com  
 www.bonaccigroup.com

Project Name: **PICTON HIGH SCHOOL REDEVELOPMENT PICTON, NSW 2571**  
 Drawing Title: **SEDIMENT AND EROSION CONTROL DETAILS**

#### SCHEMATIC DESIGN

Designed	CS	Project Director Approved	Date	North
Drawn	CS			
Scale	N.T.S.	Project Ref	Drawing No	Rev
Date	DEC 2017	20 21888 01	C007	P1
Sheet	A1			