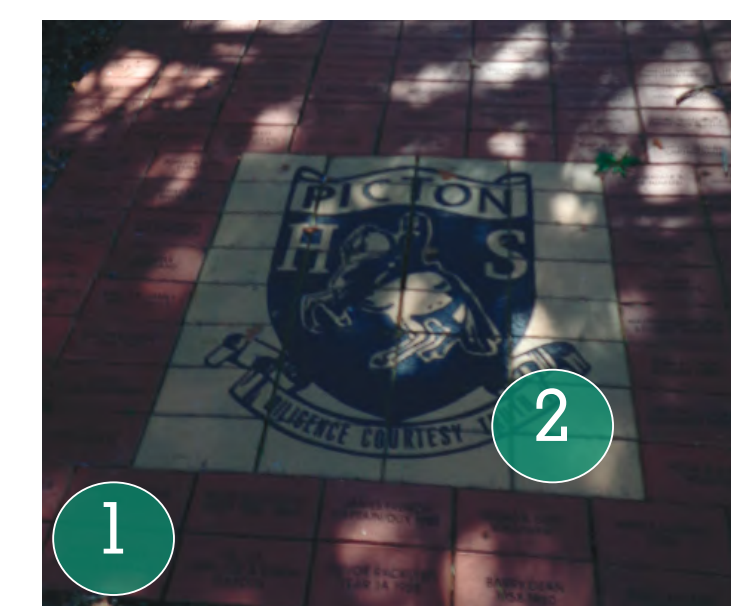
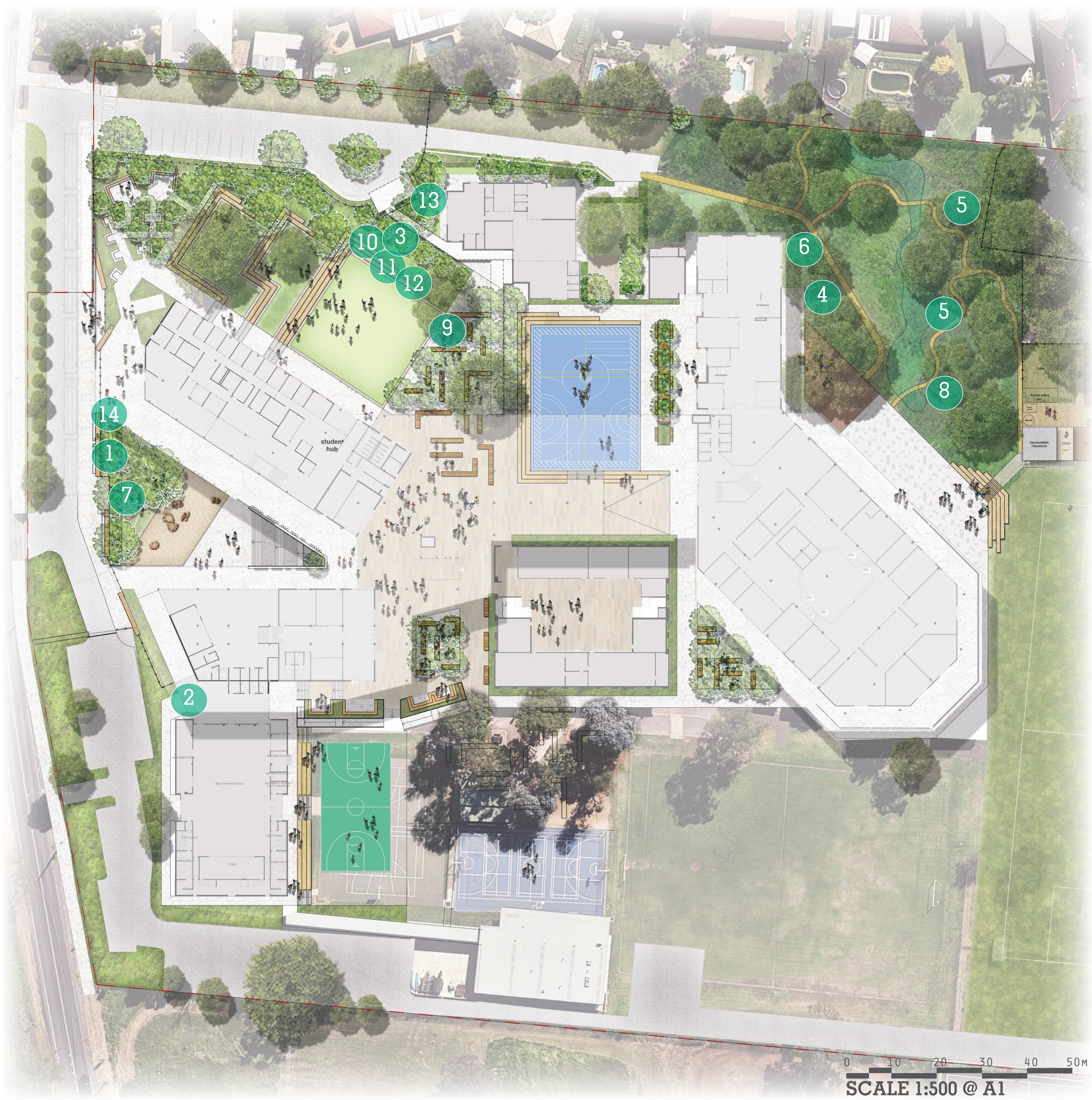
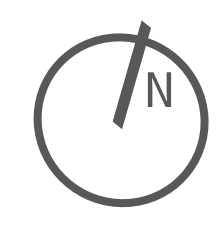


VISION | CULTURAL + HERITAGE ITEMS

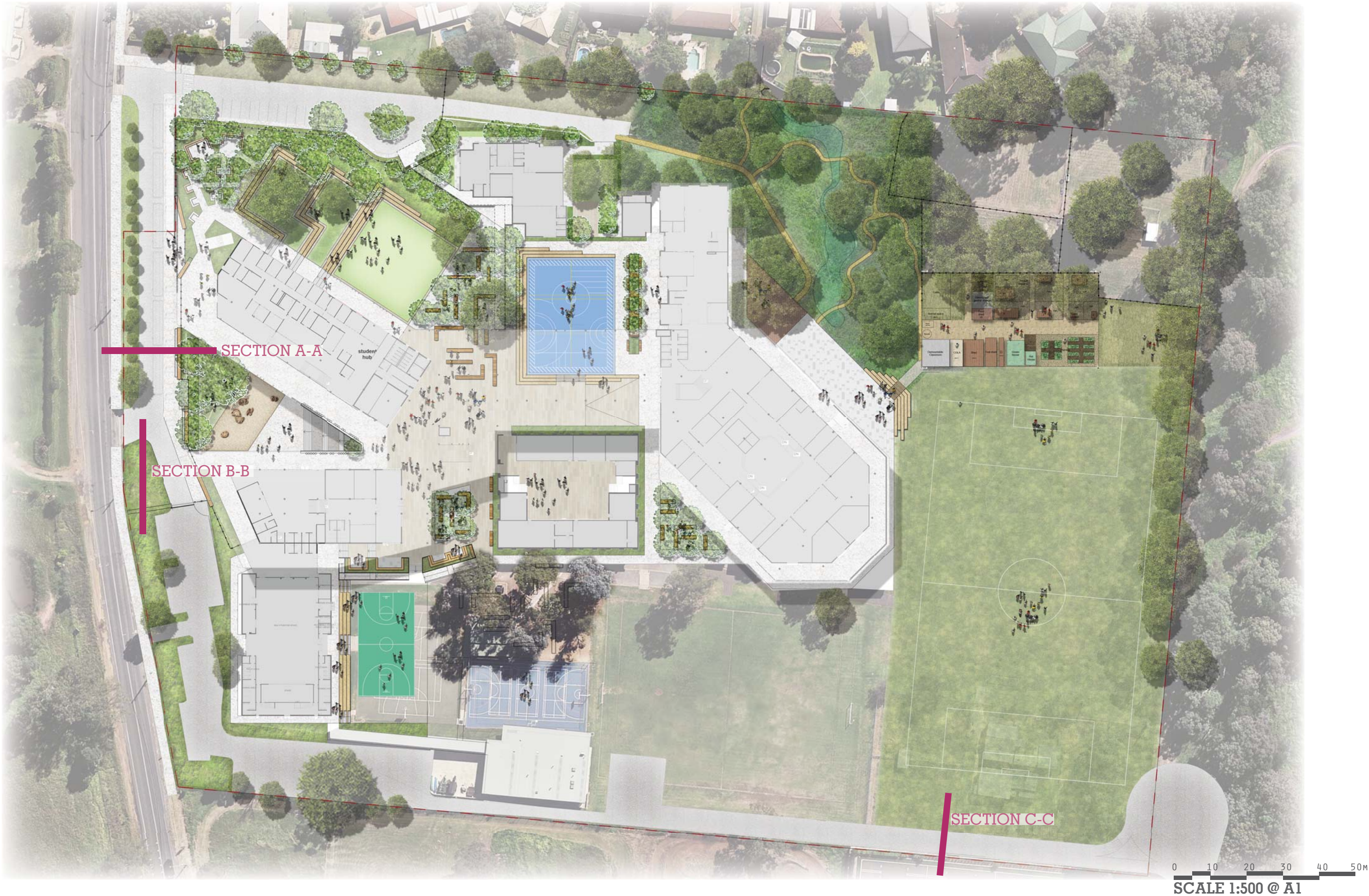


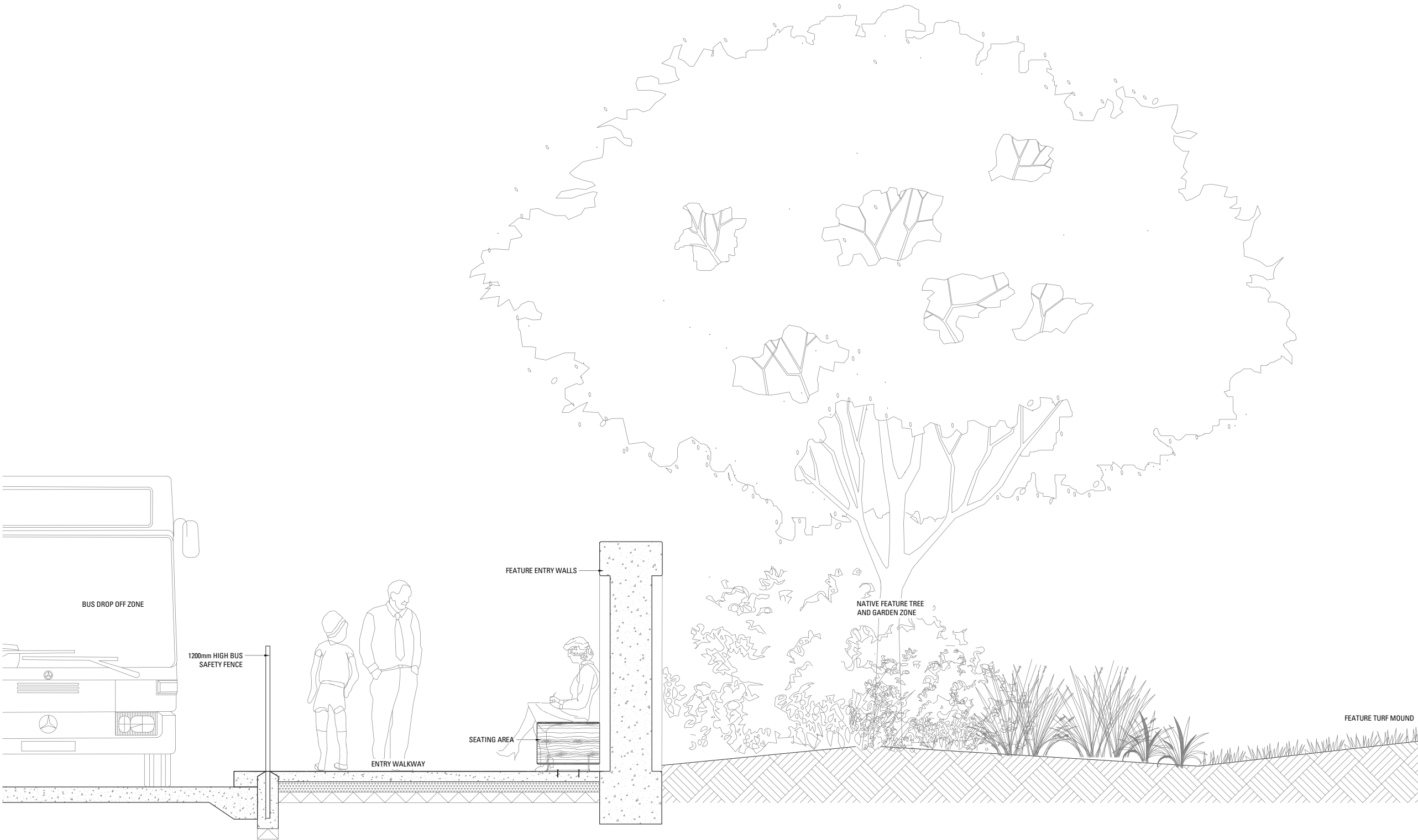
LEGEND

- 1. Memorial bricks to be set into entry wall
- 2. Picton High School Motif relocated to Hall entrance
- 3. Lone Pine relocated to northern forecourt for ANZAC Ceremonies
- 4. Yarning Circle with new stone seats
- 5. Existing Yarning Circle Seats to be relocated into educational learning zones
- 6. Totem Poles to be retained
- 7. Bush Tucker Garden to be relocated
- 8. Totem Poles to be relocated to the Environmental Educational Zone
- 9. Double Flag to be relocated to the northern forecourt for ANZAC Ceremonies
- 10. Picton Memorial Garden Sign relocated to Memorial Garden
- 11. Lest We Forget Plaque relocated to Memorial Garden
- 12. Private Thomson Plaque relocated to Memorial Garden
- 13. Flower Plaque relocated to Special Education Garden
- 14. Single Flag Pole Located to School Entry



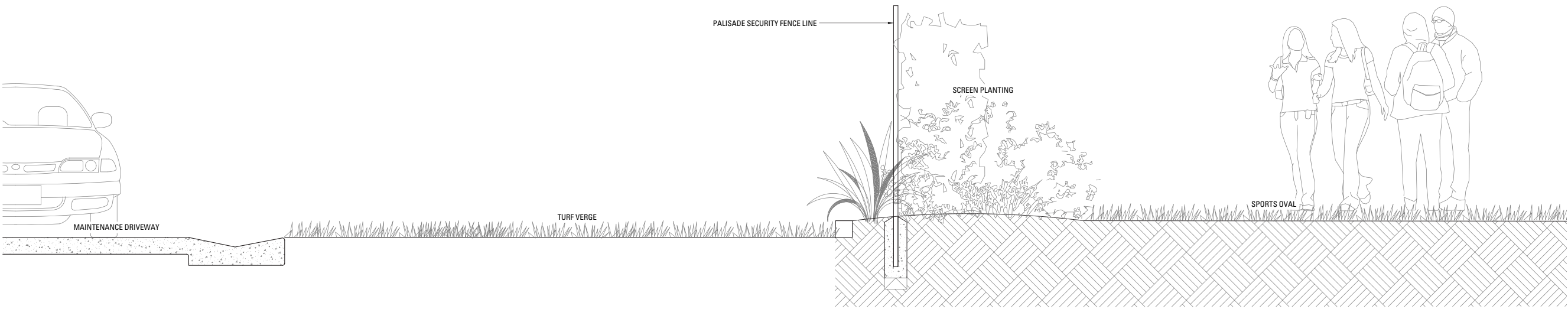
VISION | LANDSCAPE SECTIONS





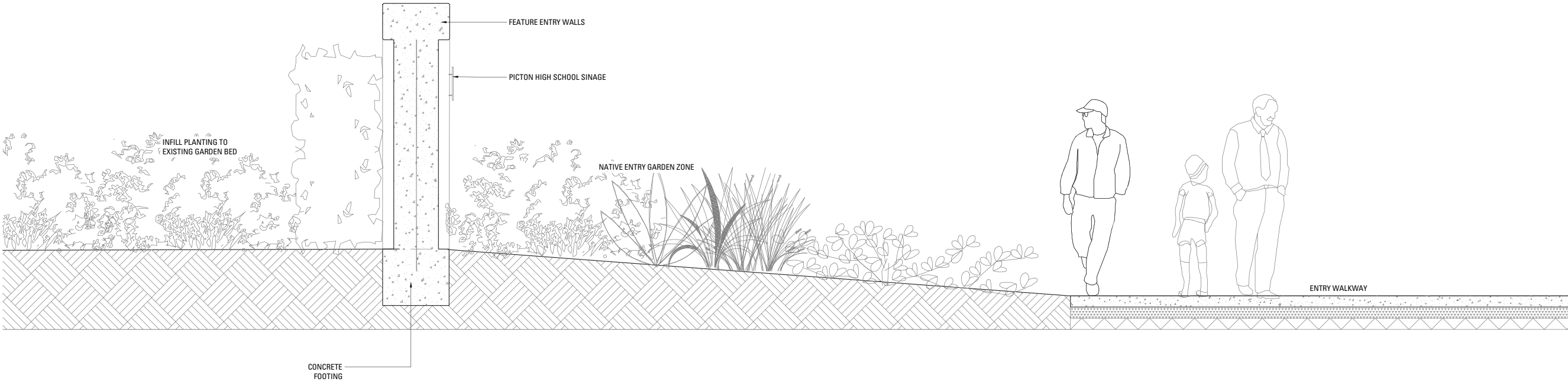
SECTION A-A

0 0.4 0.8 1.2 1.6 2M
SCALE 1:20 @ A1



SECTION B-B

0 0.4 0.8 1.2 1.6 2M
SCALE 1:20 @ A1



SECTION C-C





1 - EXISTING FLAGPOLE TO BE RE-LOCATED

2 - SOFT LANDSCAPING ALONG SECURITY FENCING

3 - BUSHTUCKER GARDEN

4 - COMMUNITY GARDEN

5 - MEMORIAL BRICKS TO BE RE-INSTATED



Education



CLIENT
DEPARTMENT OF EDUCATION
PROJECT
PICTON HIGH SCHOOL REDEVELOPMENT
DRAWING
FRONT ENTRY - LANDSCAPING AND SECURITY FENCE

Project No 17003
Scale @A1
Drawing No SSD - SK - 0002
Date 27/07/18

APPROACH | TREE RETENTION + REMOVAL STRATEGY

