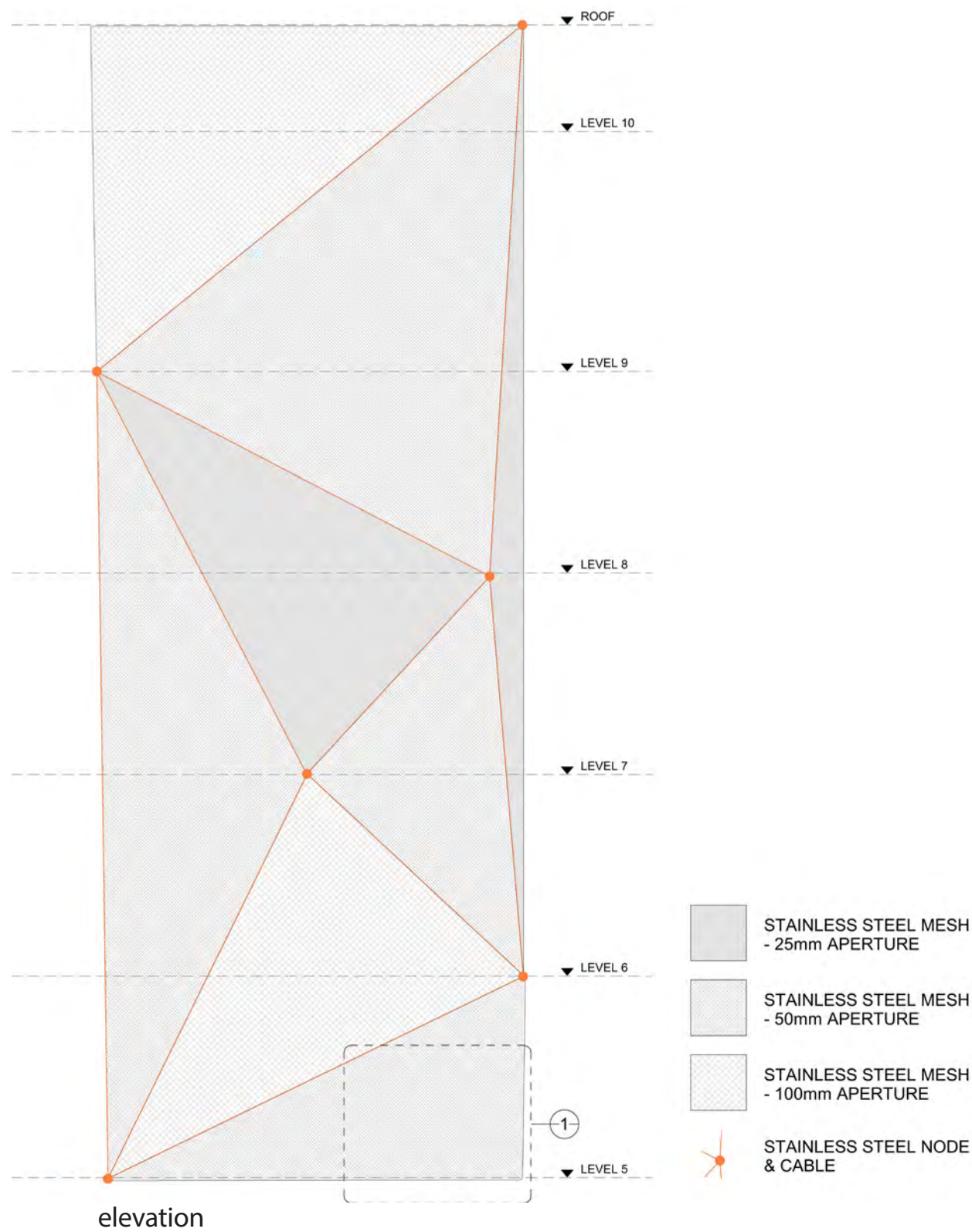
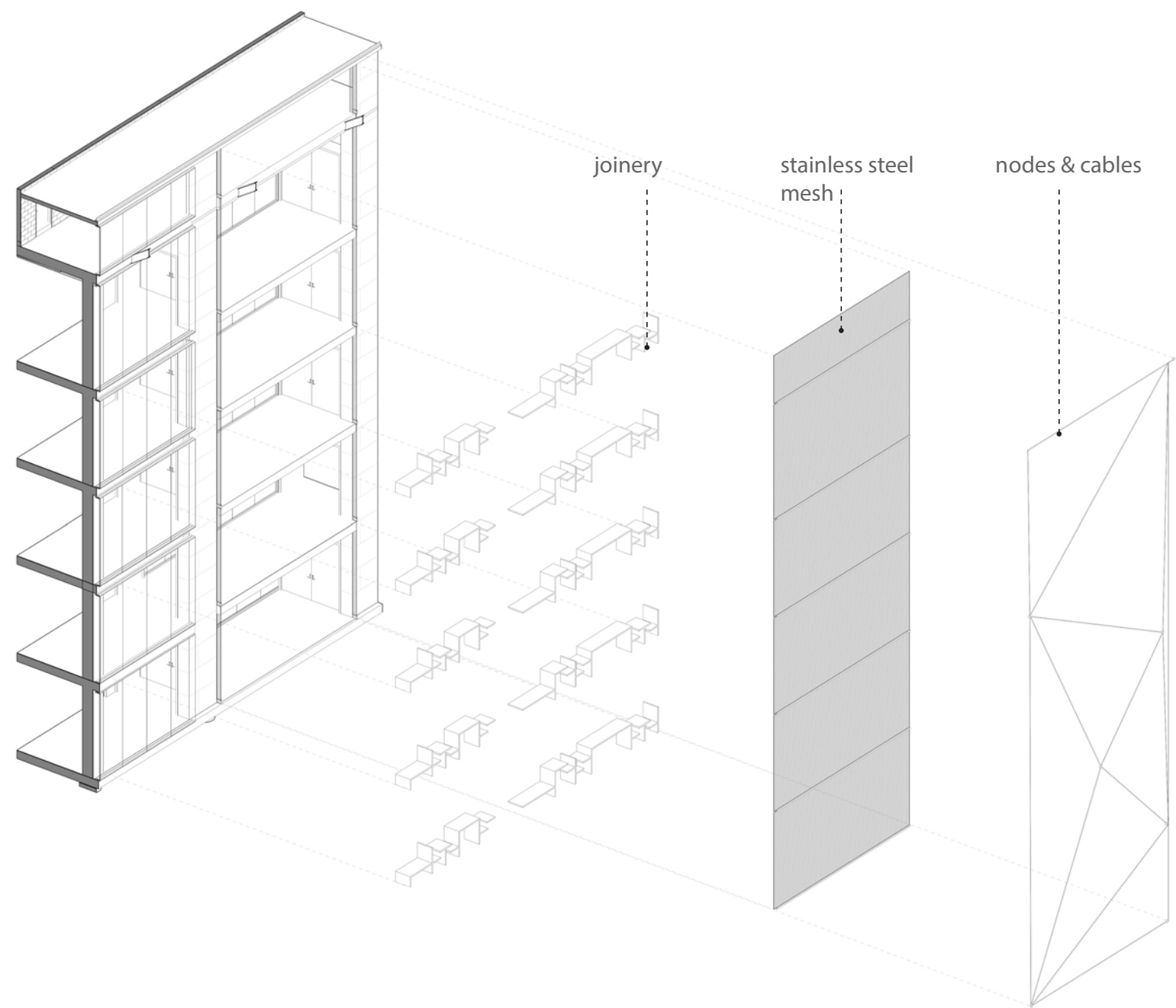
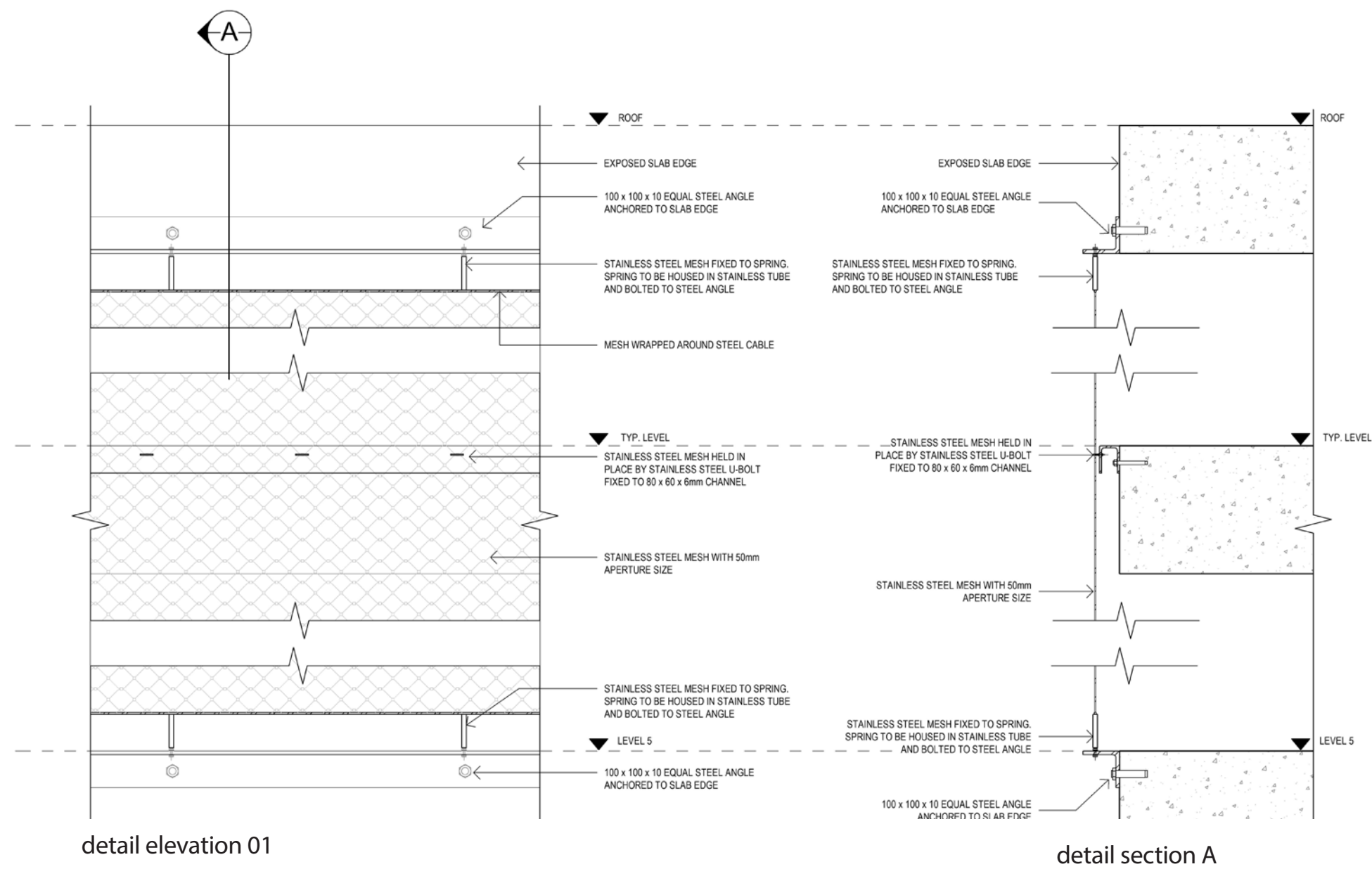


Atrium Components



Atrium

Detail of Mesh



Mesh N2 - stainless steel

Atrium

Atrium Edge

social hub space on level 5
adjacent to kitchen

stainless steel tensioned mesh

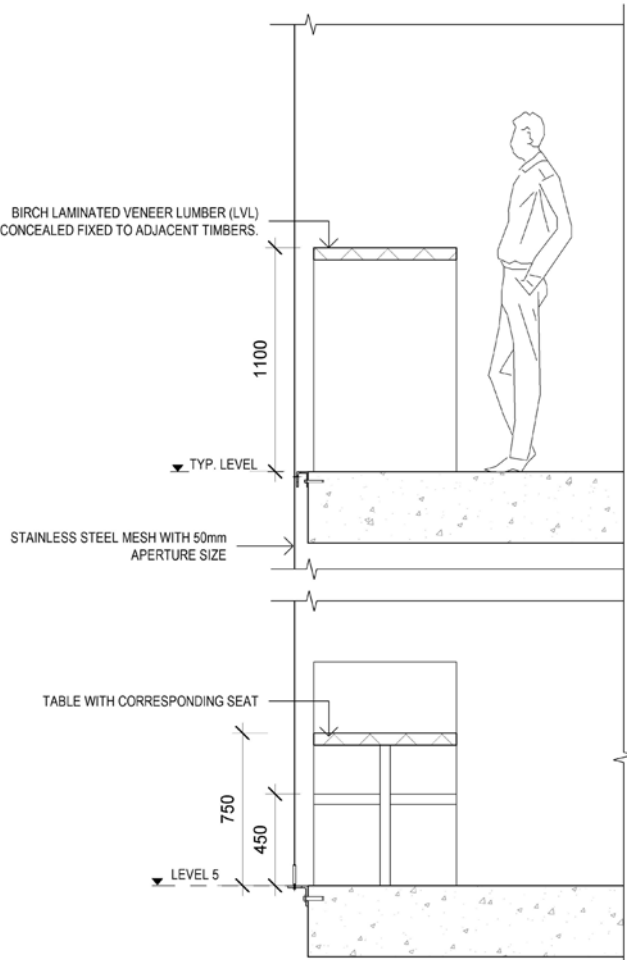
laminated veneered lumber (LVL)
joinery along mesh edge.
combination of touchdown spaces
with standing, bench seat, table and seat



visual from level 5



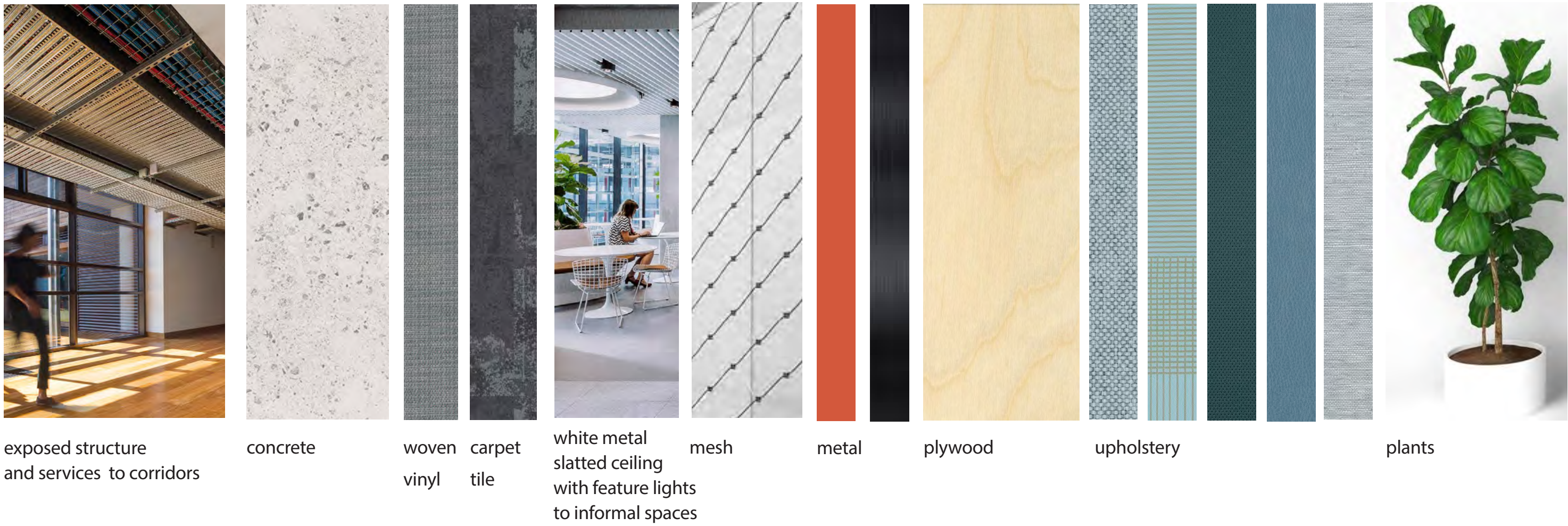
finish



section

Atrium

Detail of Finishes



exposed structure
and services to corridors

concrete

woven
vinyl

carpet
tile

white metal
slatted ceiling
with feature lights
to informal spaces

mesh

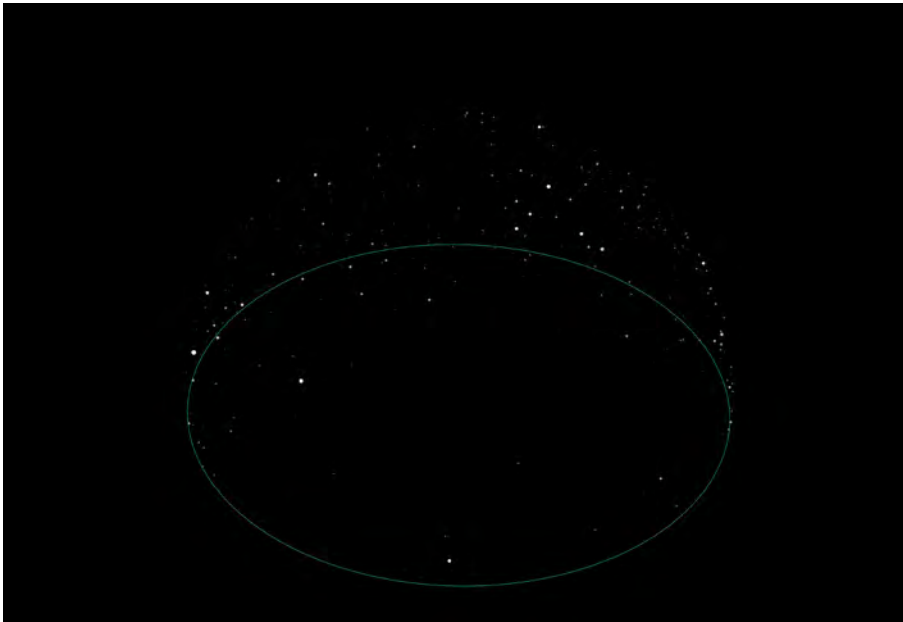
metal

plywood

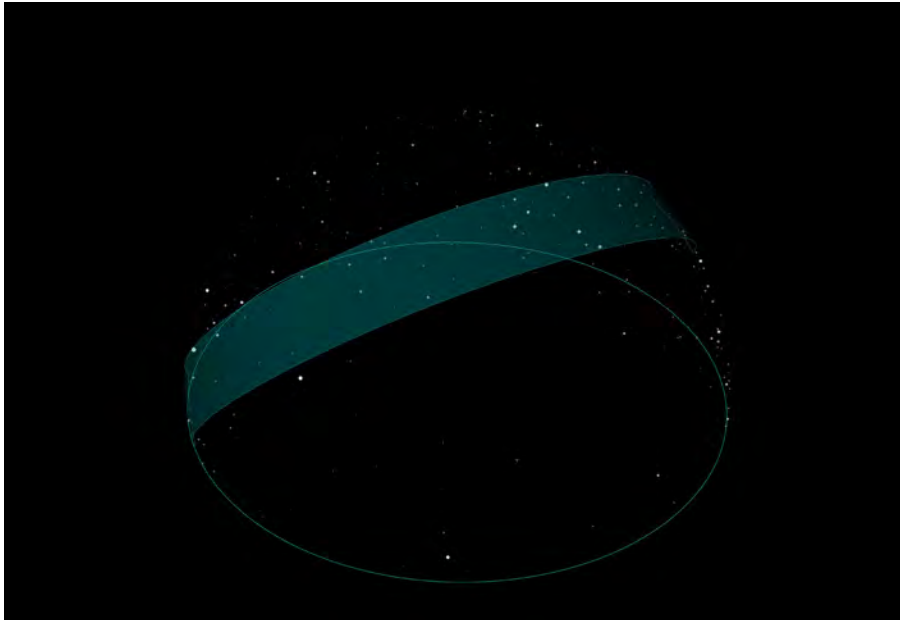
upholstery

plants

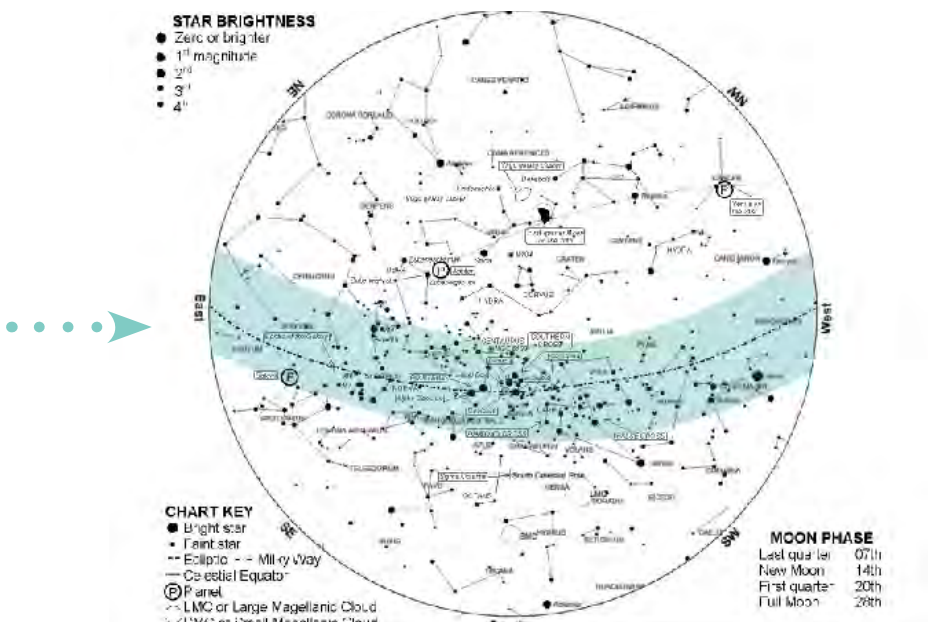
Atrium Constellation



Mapping of the visible night sky from Sydney in June



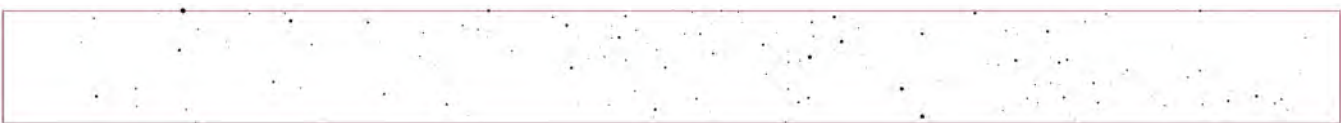
Highlighted band of stars from across the sky - east to west



SOURCE: SYDNEY OBSERVATORY JUNE 2017

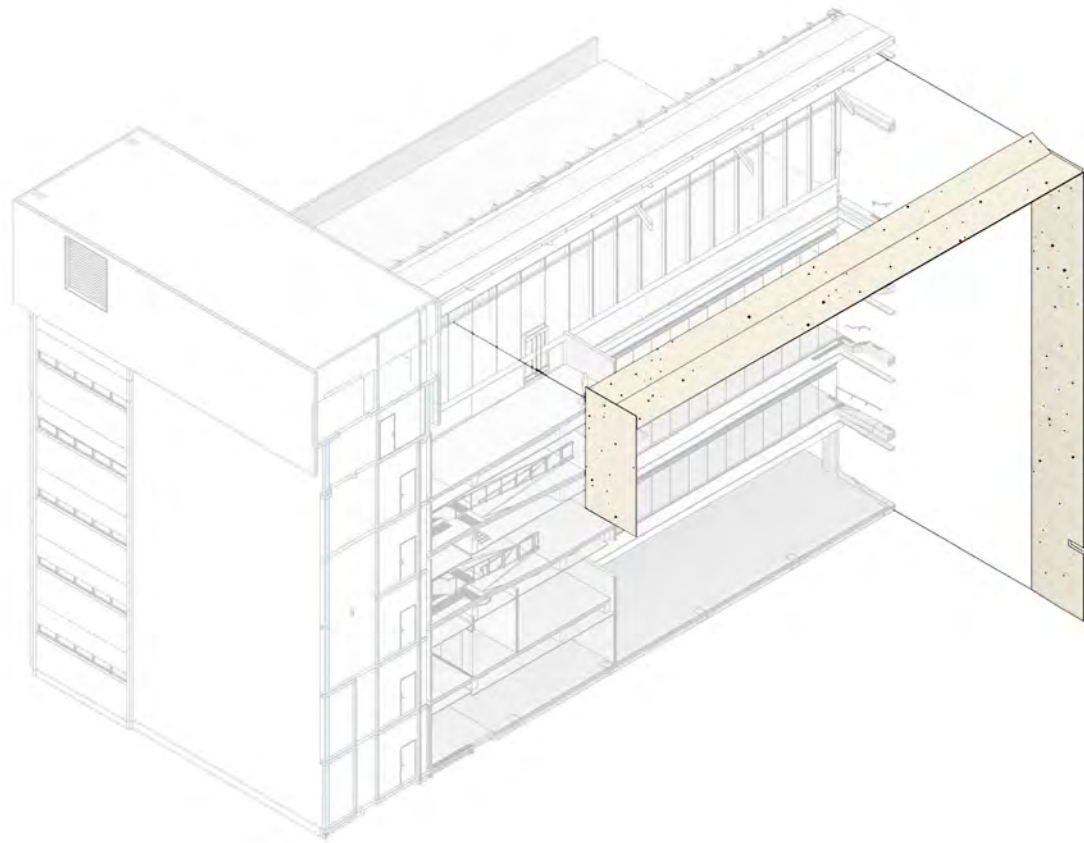


Unfolding the band onto a 2D plane

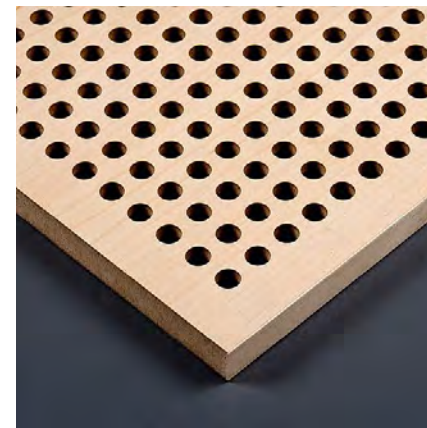


Extracted Constellation Pattern

Atrium



Constellation Pattern applied to plywood

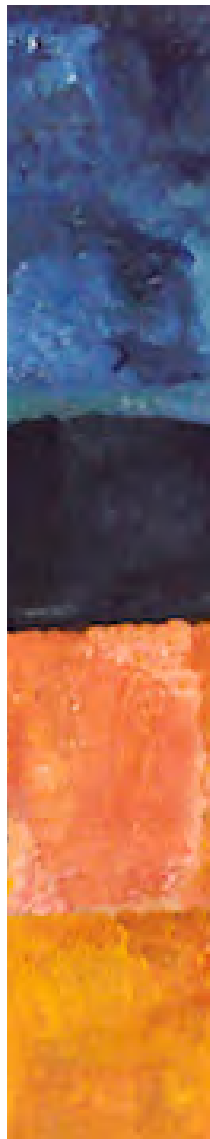
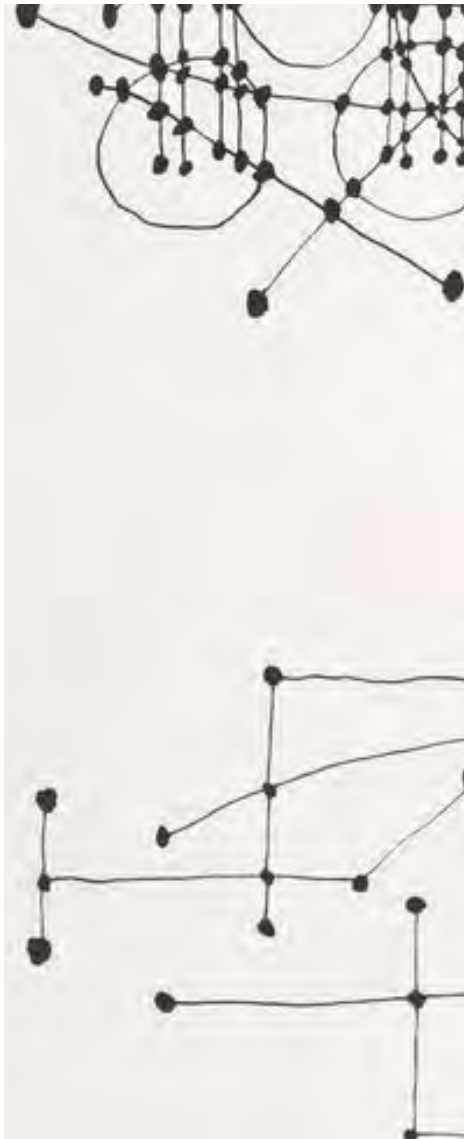


PERFORATED PLYWOOD

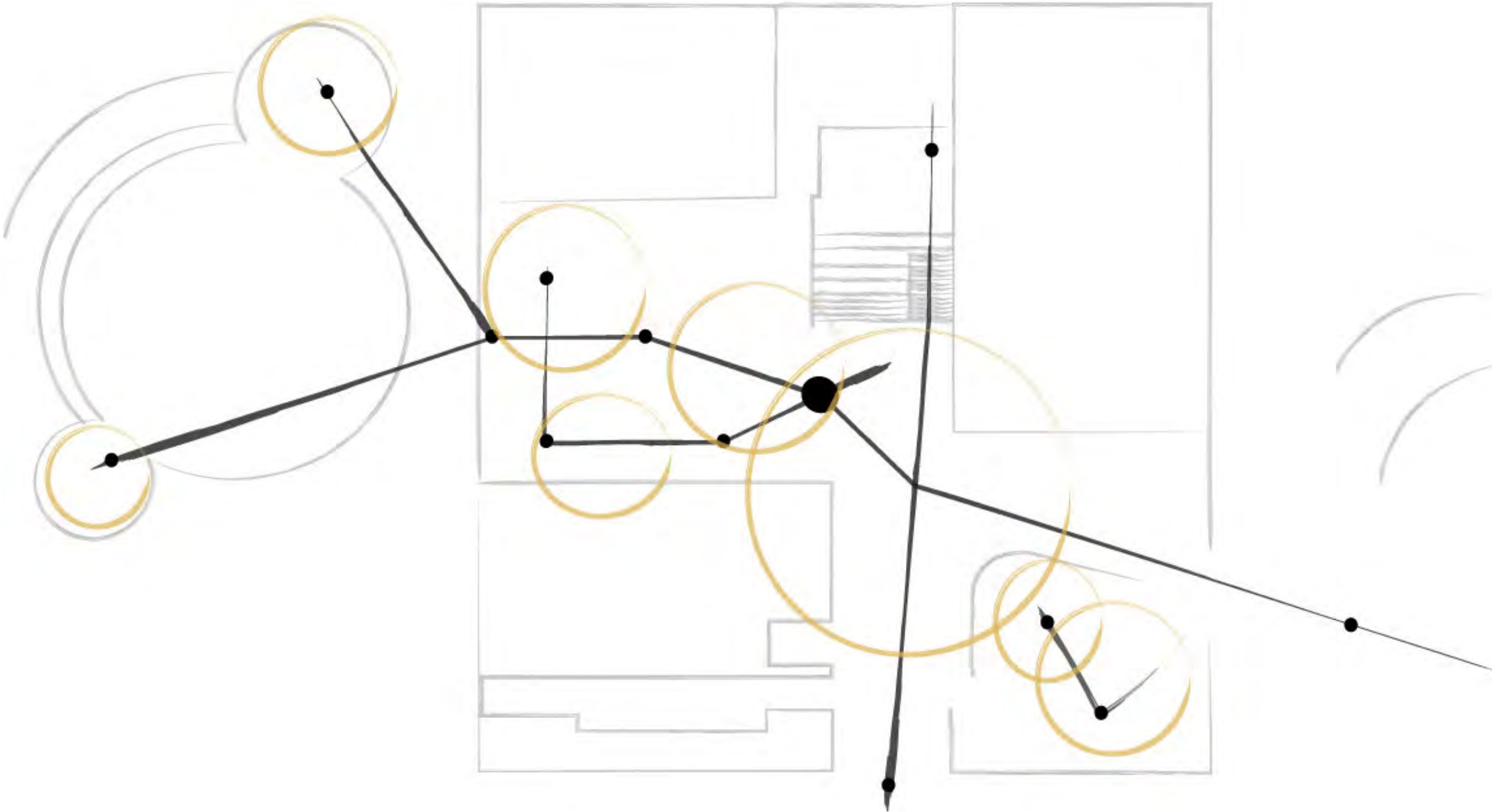
http://coxarchitecture-workshop.com/projects/18_USYD/



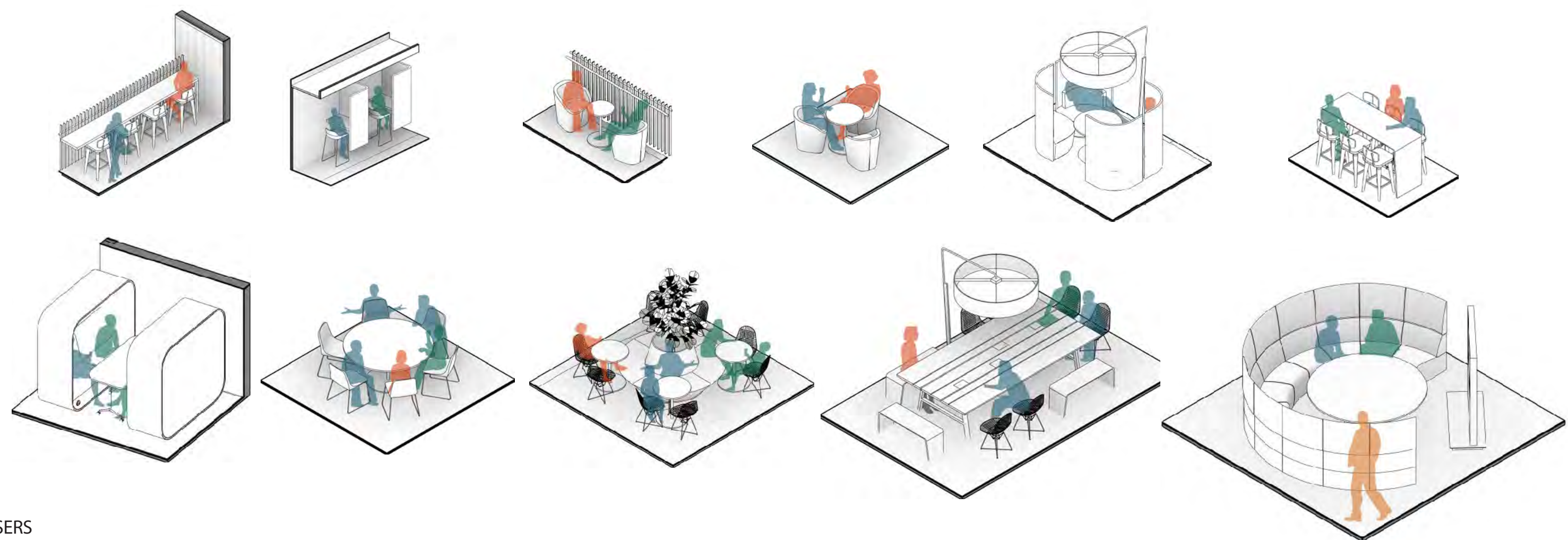
Ground Plane Concept



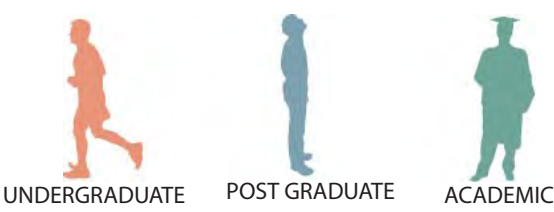
Ground Plane Concept



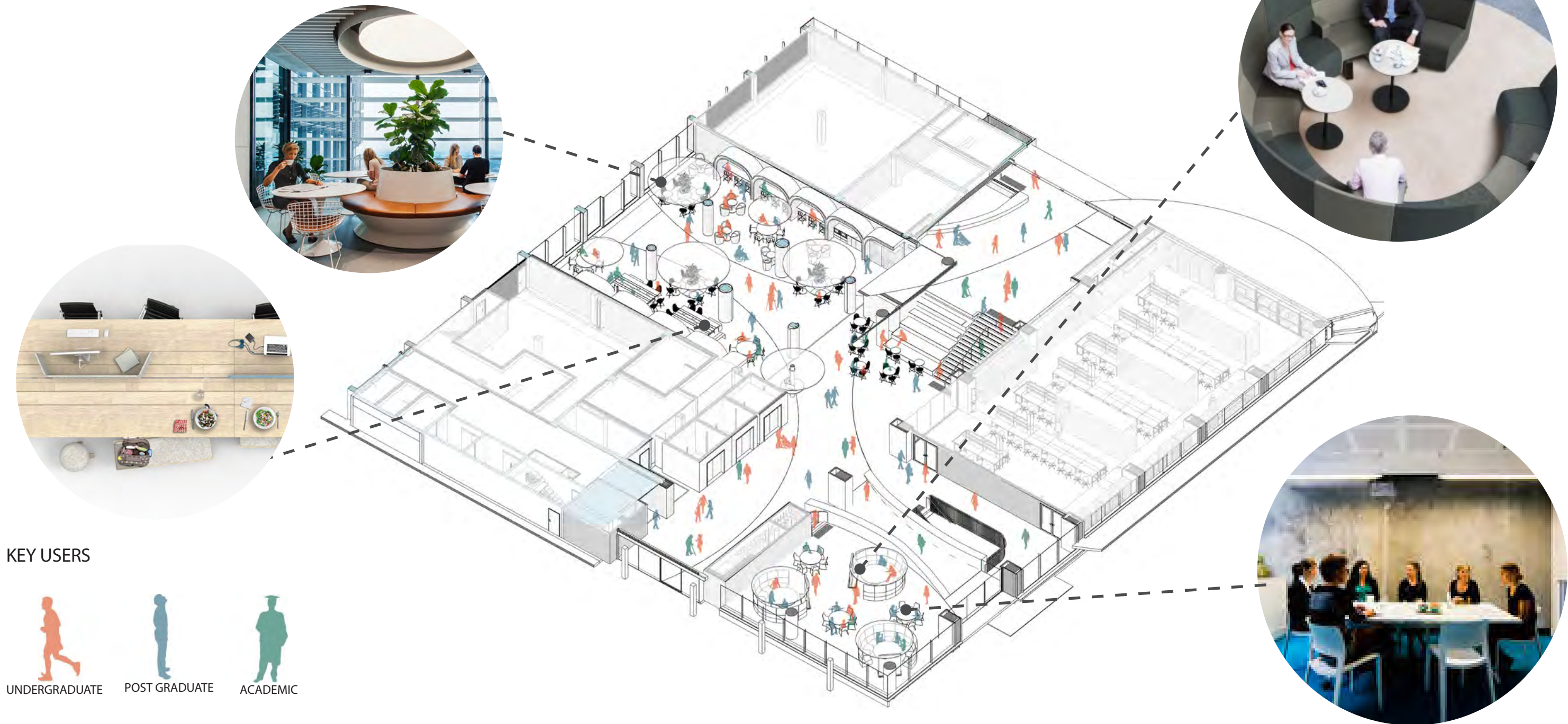
Ground Plane Constellation of Spaces



KEY USERS



Ground Plane Constellation of Spaces

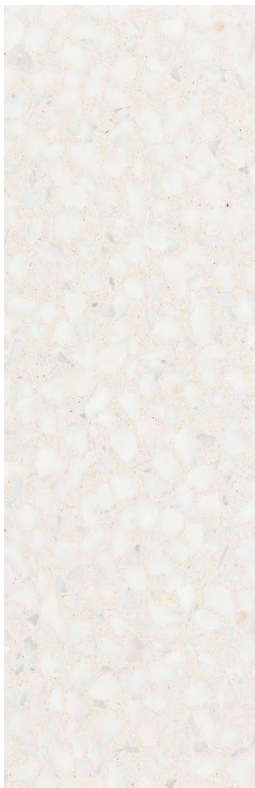


Ground Plane

Detail of Finishes



concrete



concrete



carpet tile



metal mesh



metal



plywood



upholstery



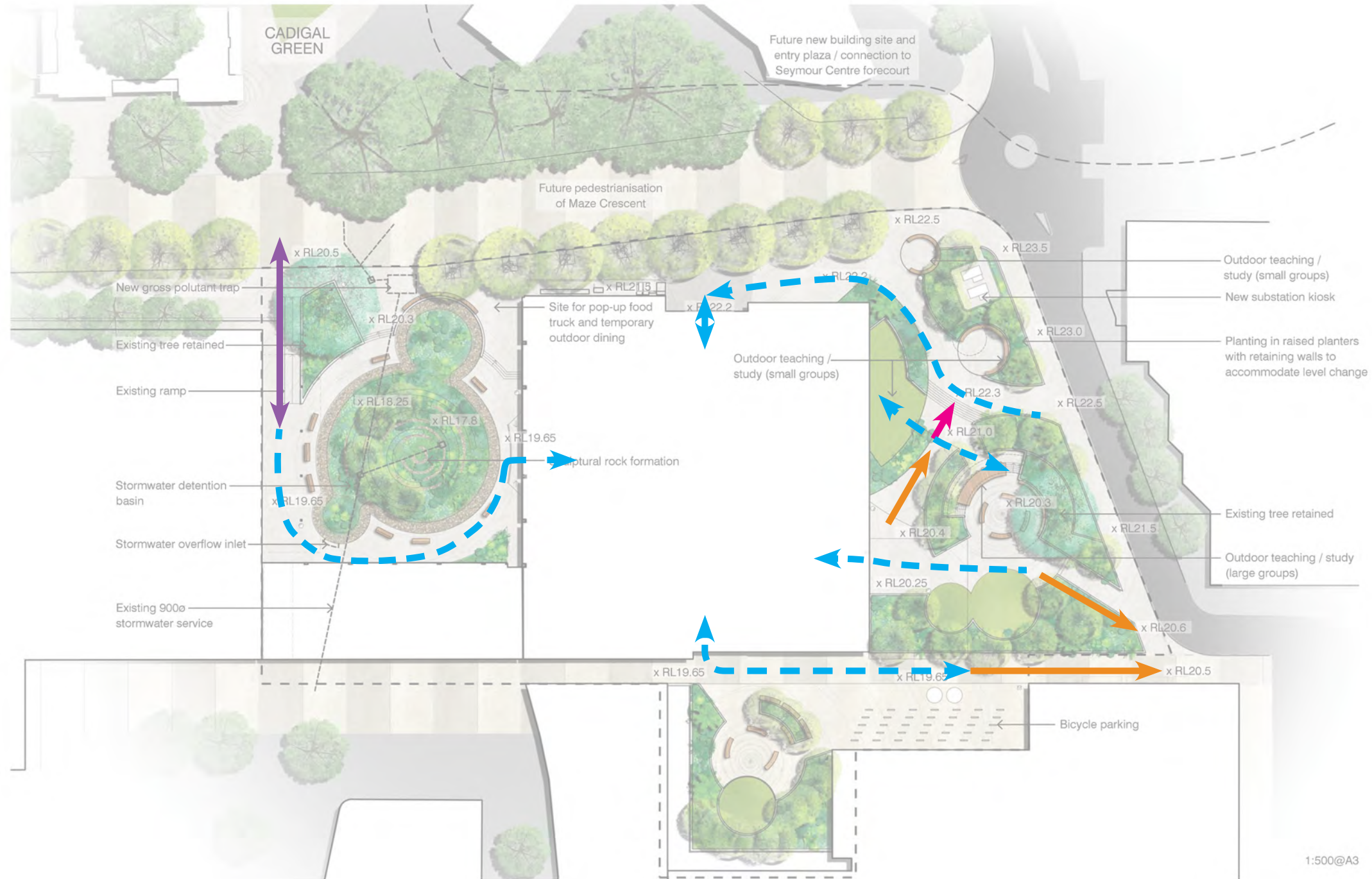
plants



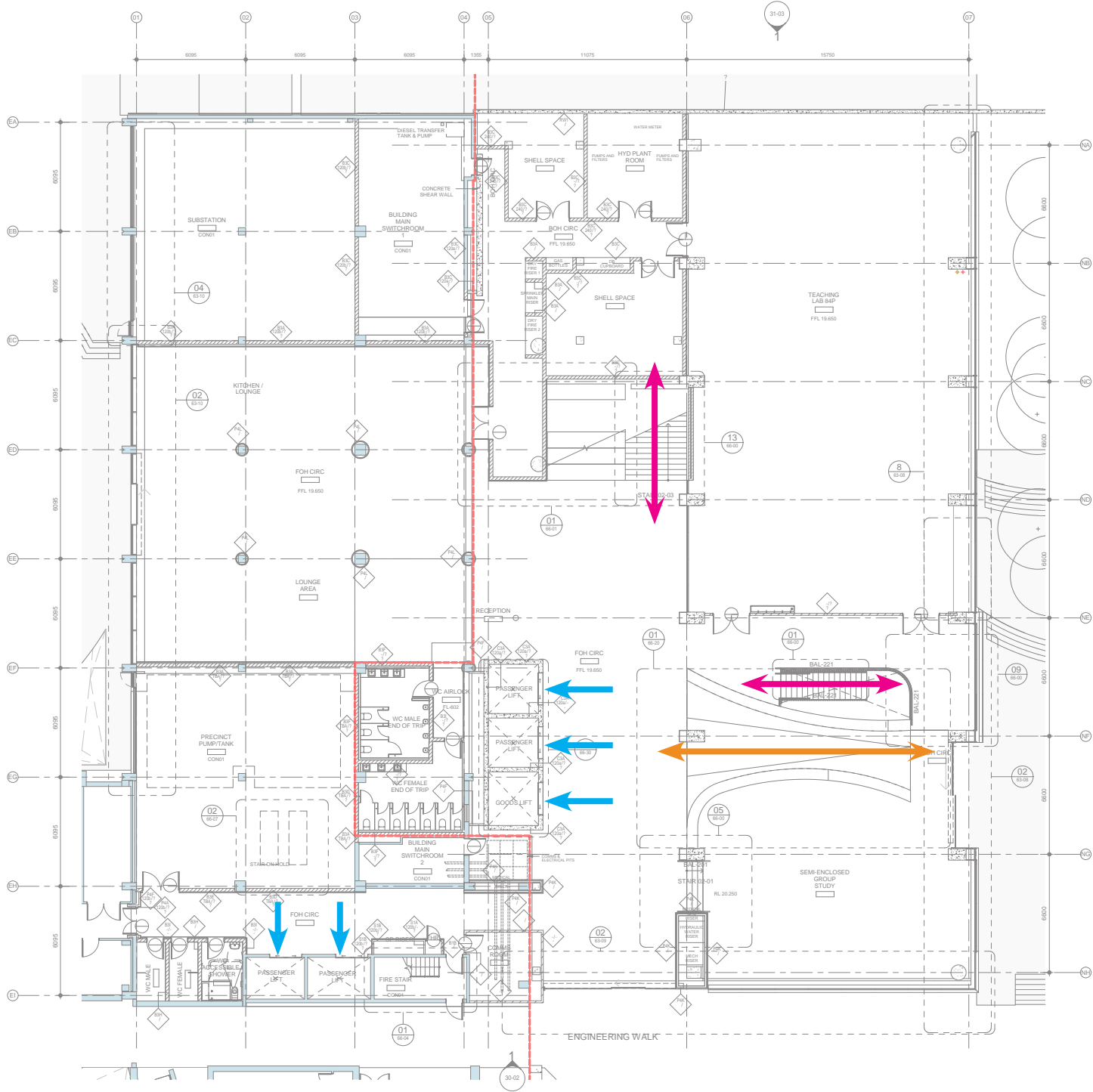
Other



Access Strategy Site Plan

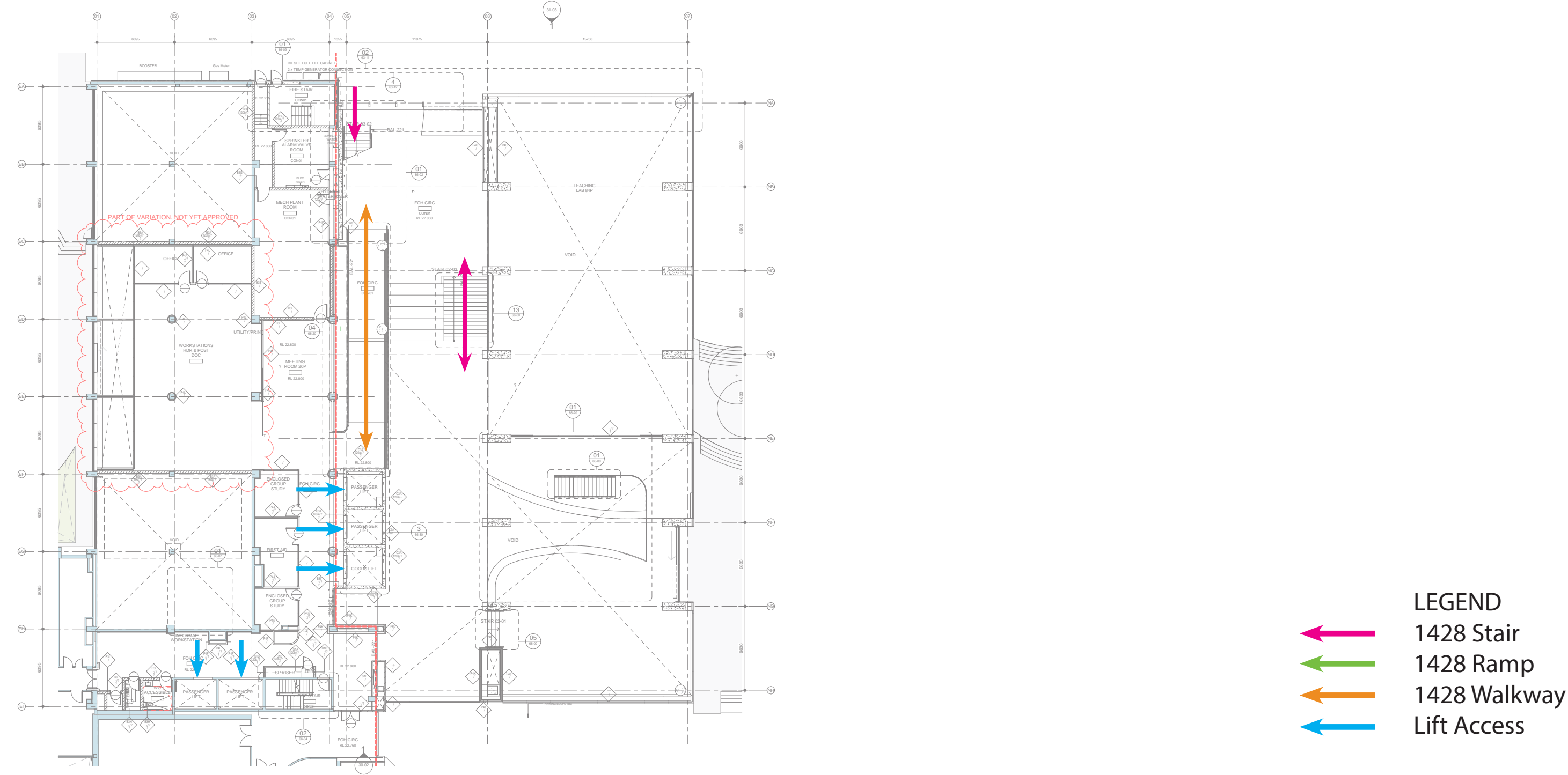


Access Strategy - Level 02

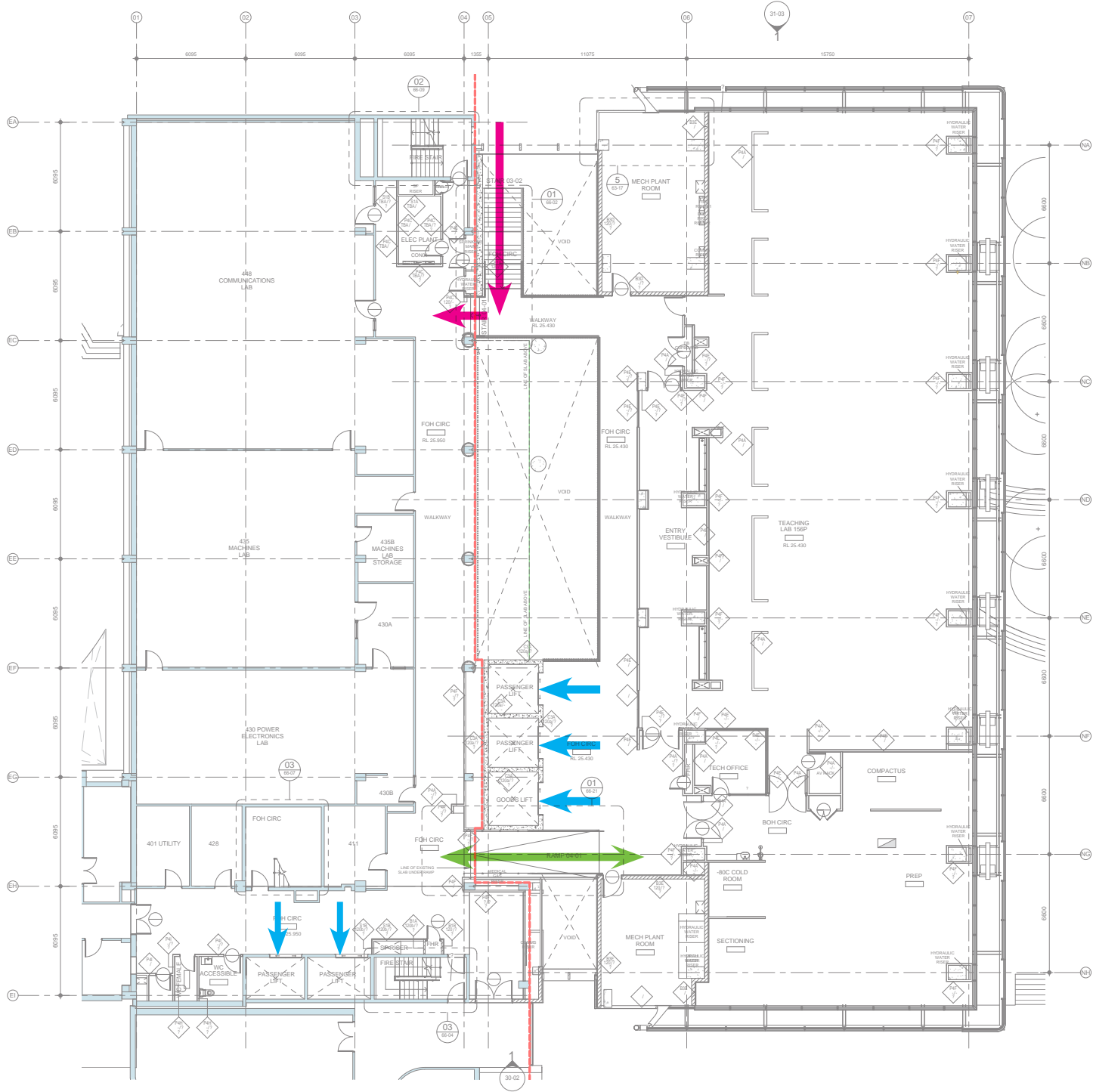


- LEGEND
- 1428 Stair
 - 1428 Ramp
 - 1428 Walkway
 - Lift Access





Access Strategy - Level 03



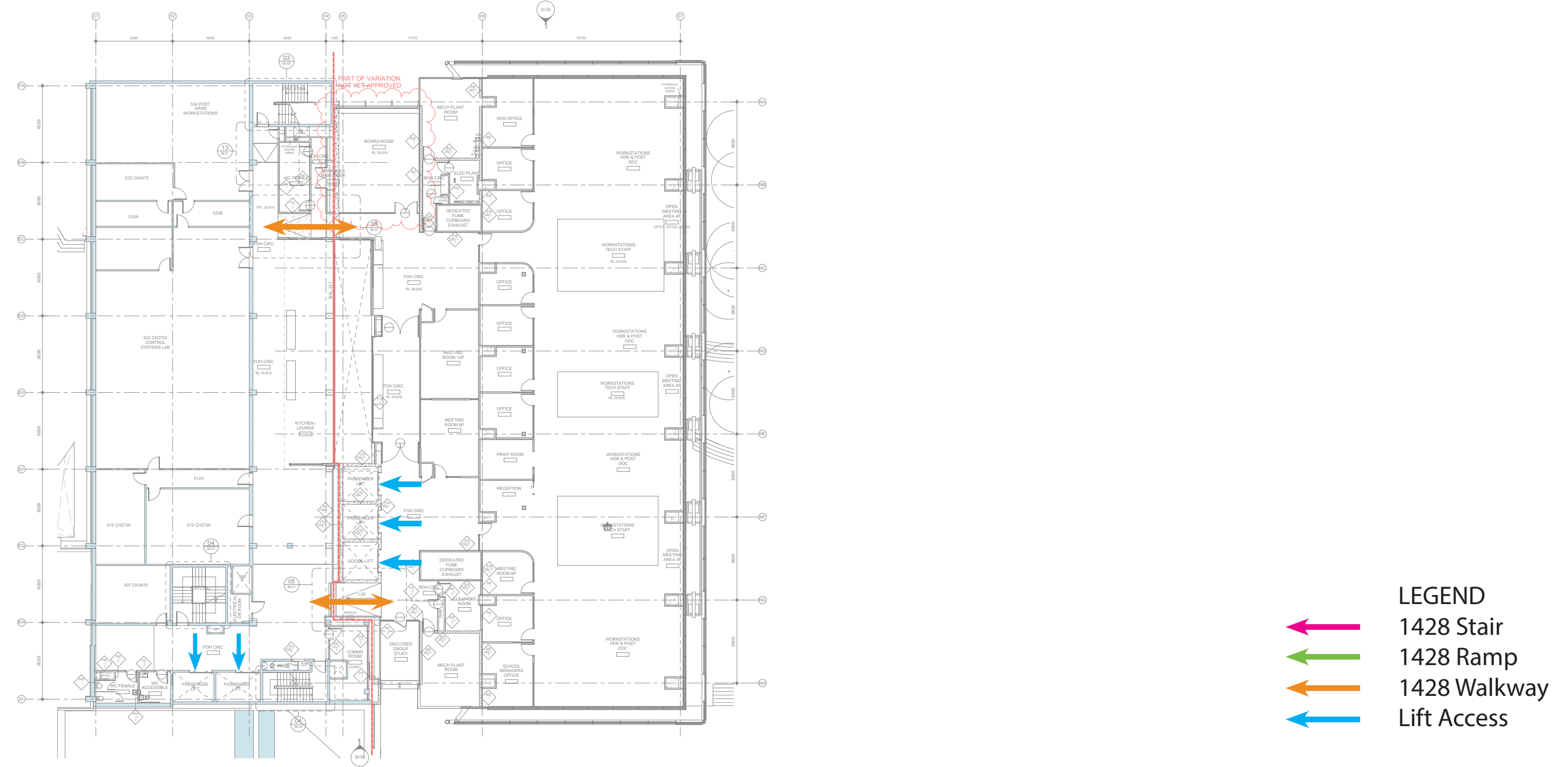
Access Strategy - Level 04



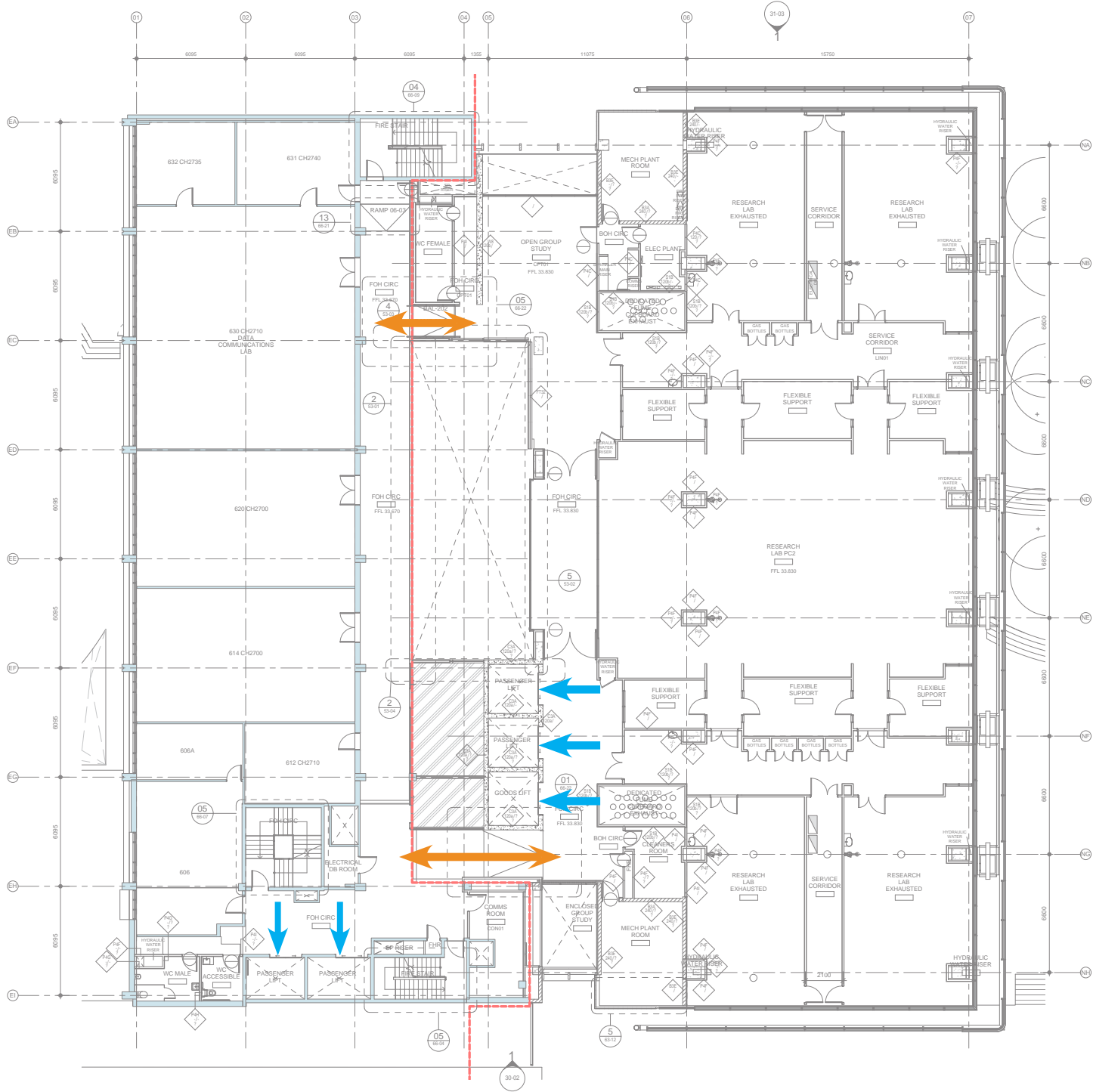
LEGEND

-  1428 Stair
-  1428 Ramp
-  1428 Walkway
-  Lift Access

Access Strategy - Level 05



Access Strategy - Level 06



LEGEND

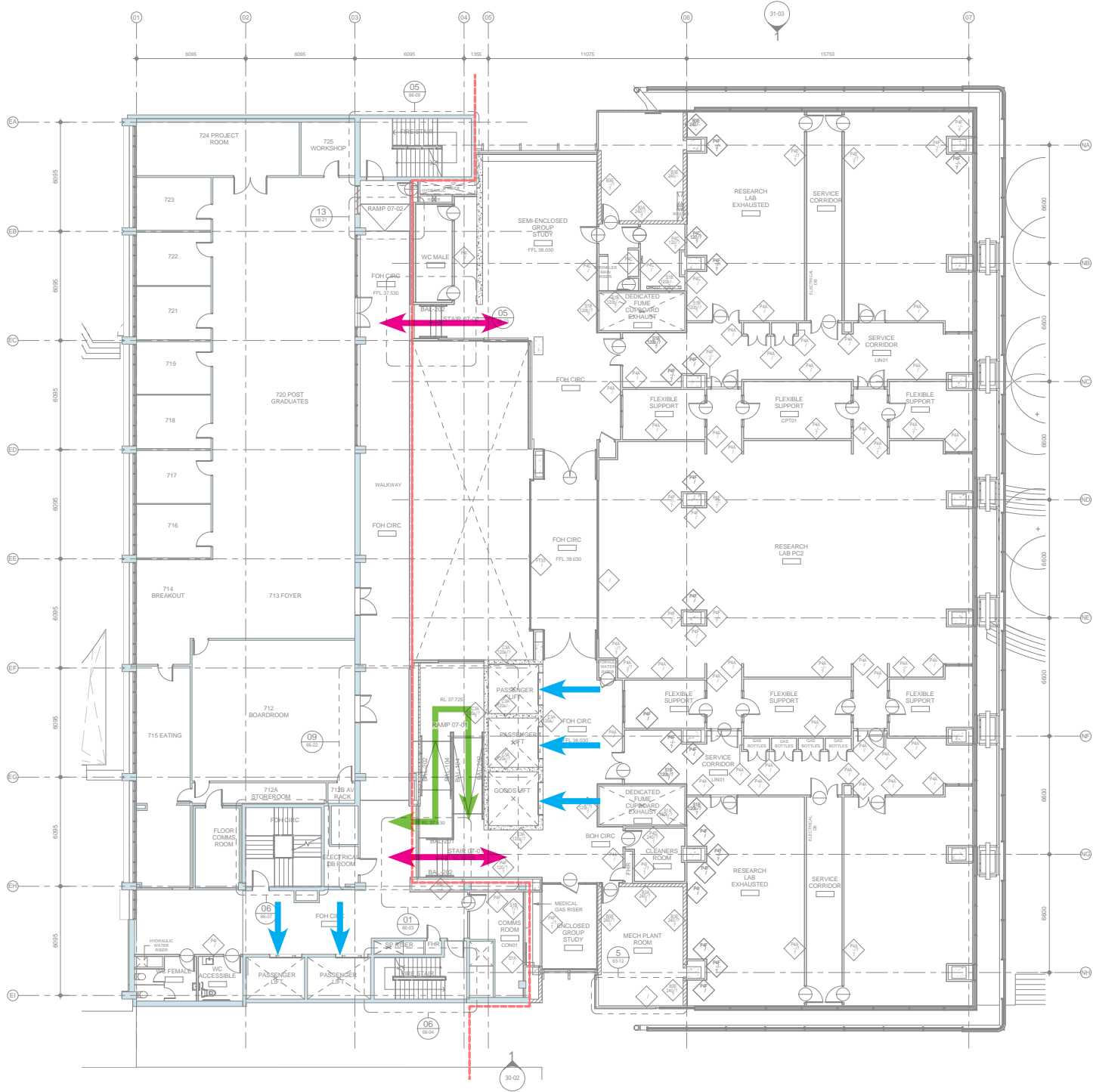
1428 Stair

1428 Ramp

1428 Walkway

Lift Access

Access Strategy - Level 07



LEGEND

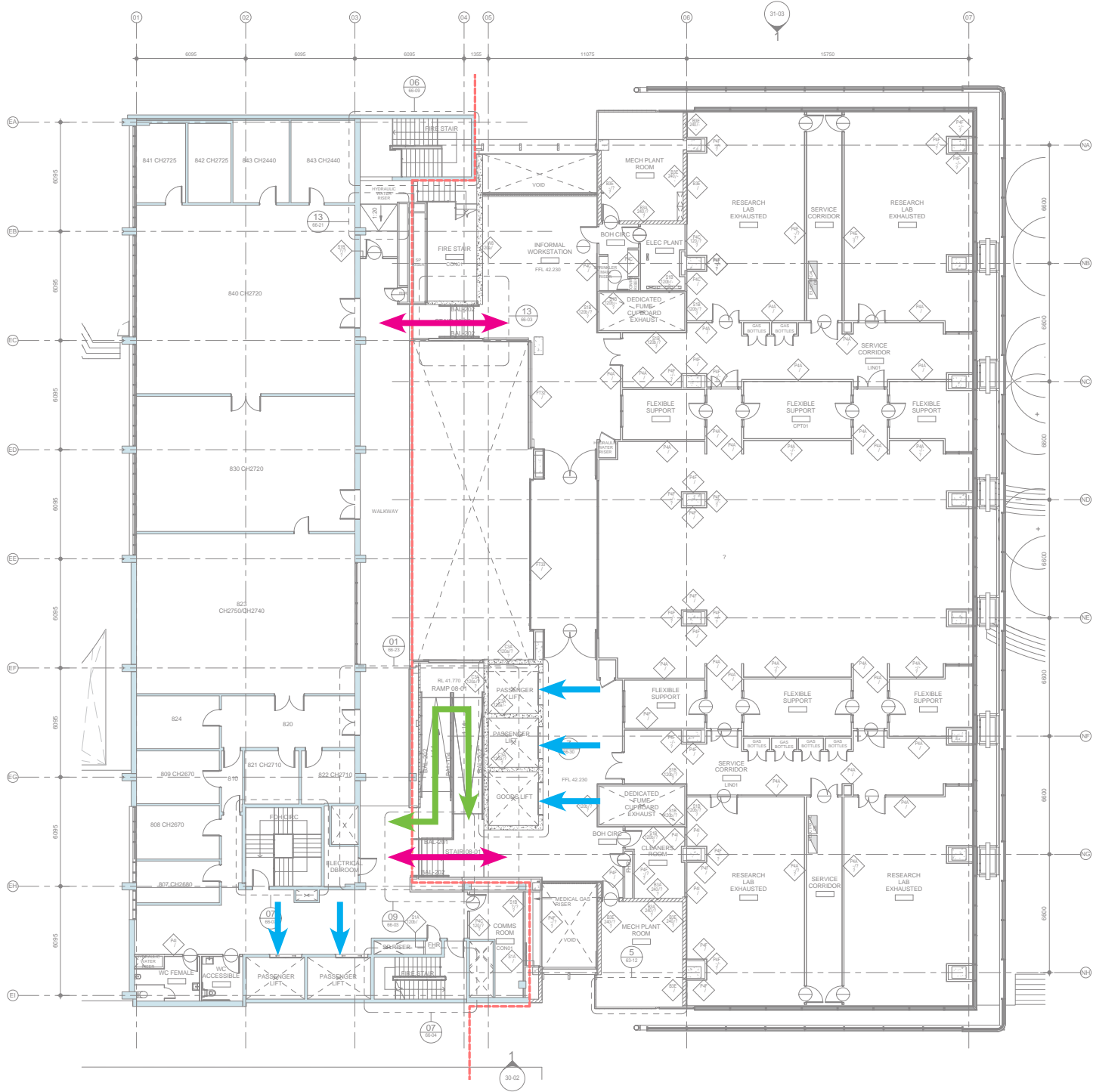
1428 Stair

1428 Ramp





1428 Walkway

Lift Access

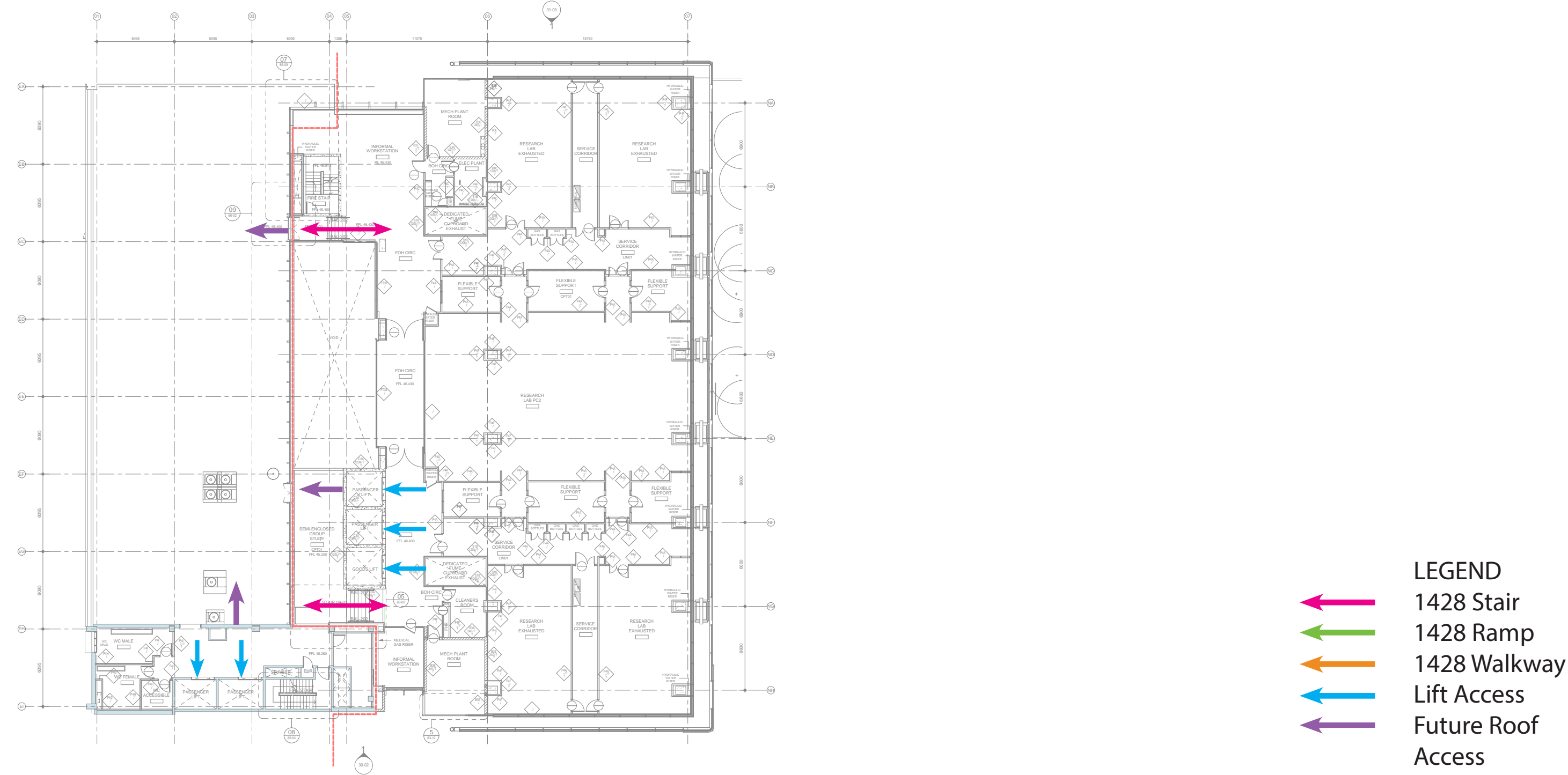
Access Strategy - Level 08



LEGEND

-  1428 Stair
-  1428 Ramp
-  1428 Walkway
-  Lift Access

Access Strategy - Level 09

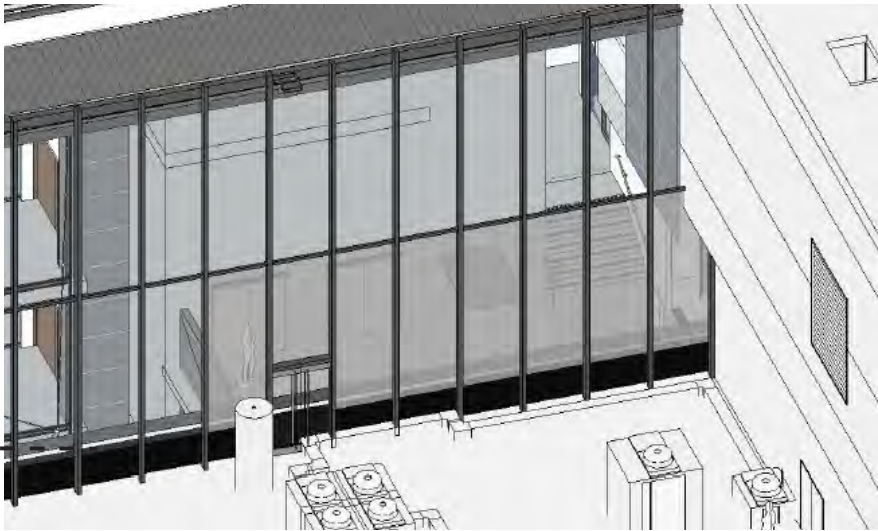
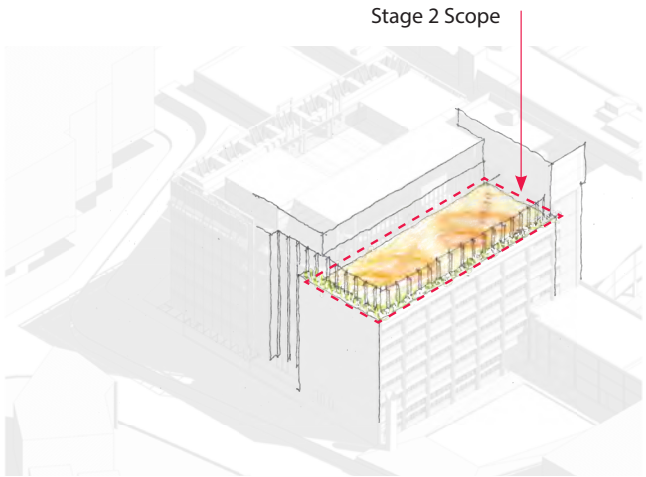
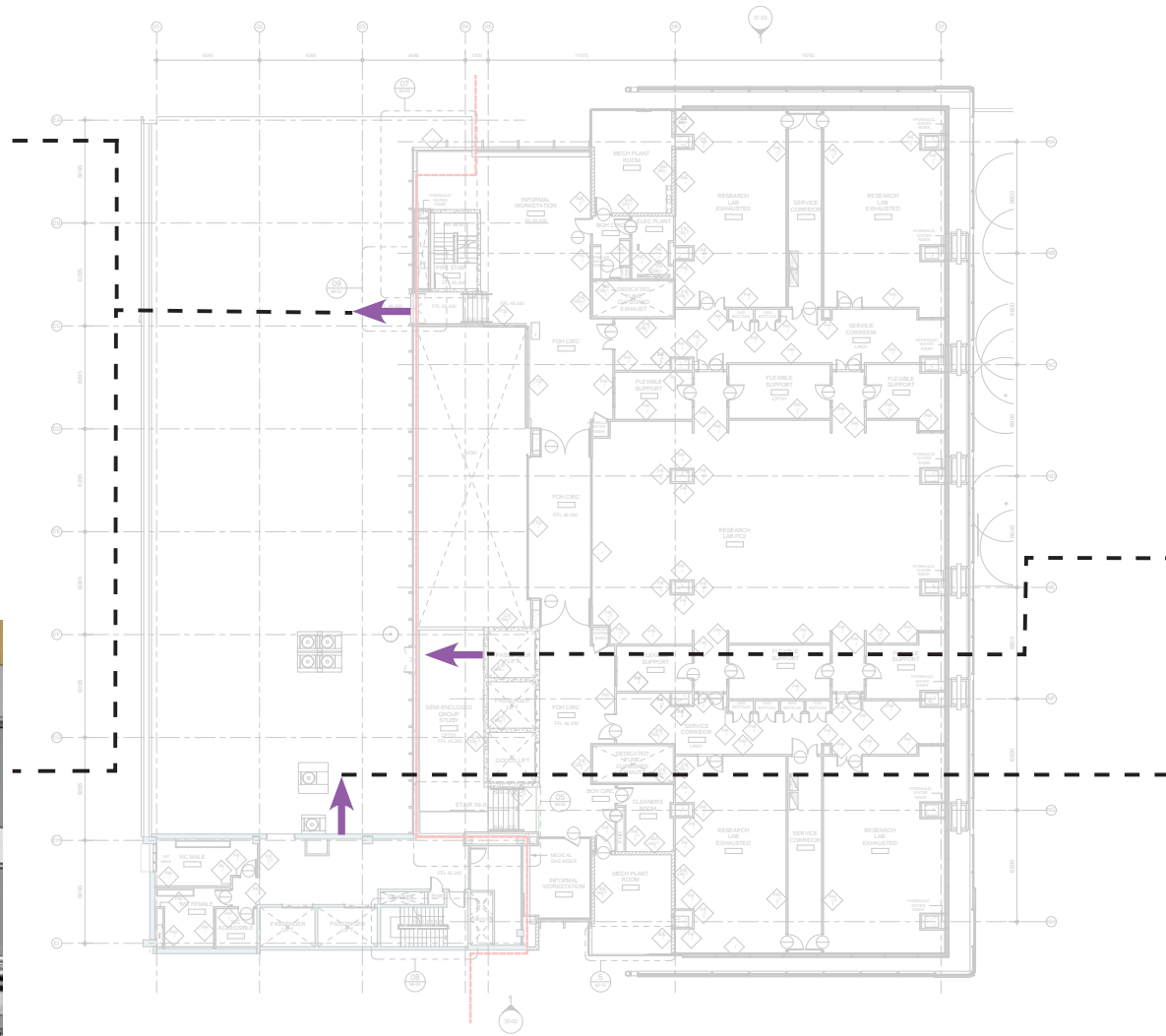


Façade Rooftop Option (Stage 2 Scope)

Previous External Stair



Revised Internal Stair



Confirmation and Architects Engagement

Instrument of Agreement

This Consultancy Agreement is made the 8th day of March 2018

Agreement No. SK33/000...
Project No. K33

BETWEEN: LAING O'ROURKE AUSTRALIA CONSTRUCTION PTY LIMITED of Level 4, 100 Arthur Street, North Sydney NSW 2060 (ABN 39 112 099 000) (Laing O'Rourke)

AND: COX Architecture Pty Ltd of Level 6, 155 Clarence Street, Sydney NSW 2000 (ABN 78 426 372 646) (Consultant)

A Laing O'Rourke wishes to carry out the Project.

B Laing O'Rourke wishes to engage the Consultant, and the Consultant has agreed, to perform the Services on the terms set out in this Agreement.

C Laing O'Rourke agrees to pay the Consultant the Fee as adjusted by any additions or deductions made in accordance with the Agreement, in consideration of the Consultant performing in accordance with this Agreement.

D It is agreed that this Instrument of Agreement, the General Conditions of the Consultancy Agreement, the Special Conditions of the Consultancy Agreement, the Schedules and any other document stated in the Agreement to be part of the Agreement, together comprise the Agreement between the parties.

E The Consultant represents and warrants to Laing O'Rourke that all necessary authorisations are in full force and effect for the execution and delivery of this Agreement and the exercise of its rights and performance of its obligations under this Agreement.

Signed as an agreement

Signed for and on behalf of Laing O'Rourke Australia Construction Pty Ltd in the presence of:

Signature of Witness

Hayley Gilman
Name of Witness

Signature of Authorised Representative

Grant James O'Rourke
Name of Authorised Representative

Signed for and on behalf of the Consultant in the presence of:

Signature of Witness

MICHAEL GRAVE
Name of Witness

Signature of Authorised Representative

DAVID HOLM
Name of Authorised Representative

Schedule 2 – Services

(Refer clause 1.1)

Scope of Consultancy Services – Architectural, Urban Design, Interior and Landscape Services ETP Stage 1 Building

GENERAL

At all times during the life-cycle of this project, the Consultant shall provide Architectural, Urban Design, Interior and Landscape Services to enable the construction and completion of ETP Stage 1 project.

The scope of Architectural, Urban Design, Interior and Landscape Services as defined in and in accordance with the requirements of:

- 1) The Head Contract with Scope of Works – ETP Stage 1 being the ultimate document on baseline basis of design and Project contents
- 2) The Principal's Project Requirements (PPR) set of documents
- 3) The University of Sydney Design Guide Lines & Standards
- 4) The Consultant Services Agreement

The disciplines forming the Services are

- 1) Architectural Design including wayfinding/signage
- 2) Urban Design
- 3) Interior Design
- 4) Landscape Design – Outlined in TCL letter to Cox Richardson dated 2nd February 2018

The stages for Architectural, Urban Design, Interior and Landscape Services are:

- 1) SSDA including Design Excellence process
- 2) Design Development stage comprises of:
 - Schematic
 - Detailed Design
 - Further Detailed Design
- 3) For Construction stage
- 4) As Built stage

The Works packages anticipated for this project are:

- 1) Early Works packages – These are works not forming the building footprint namely relocation works to enable site clearance, toilets upgrade within existing J03 building, VIE tanks
- 2) Demolitions – Soft and hard demolition including completion of western staircase Level 4 to Level 3
- 3) New Build – Main building works

At all time, it is expected that this Consultancy Service produces advice and solutions on Architectural, Urban Design, Interior and Landscape Services that demonstrate (as a minimum):

- 1) Ease of Build
- 2) Efficiency of materials
- 3) Low maintenance

University of Sydney Engineering and Technology Precinct - Stage 1

Design Excellence Review Committee 04

31st August 2018

