

# Community Review Meeting

**Faculty of Engineering and  
Information Technology (FEIT)**

**New Teaching and Research  
Facilities**

**J03 - Electrical Engineering Building**



14 November 2017



## Presentation Contents

1. The approved Campus Improvement Program (SSD 6123) – The Engineering Precinct
2. Preparing the Site - Early Works Package
3. The Proposed Development Application & Process

### The precinct as a connected gateway

We will connect with our neighbours, the University, our stakeholders and all our friends through a distinct gateway making it easy for everyone to find us.

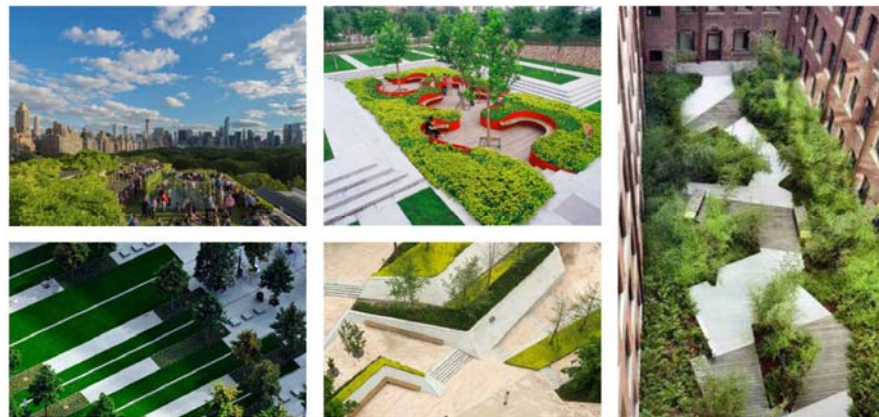


## The Campus Improvement Program – Stage 1 Development Approval

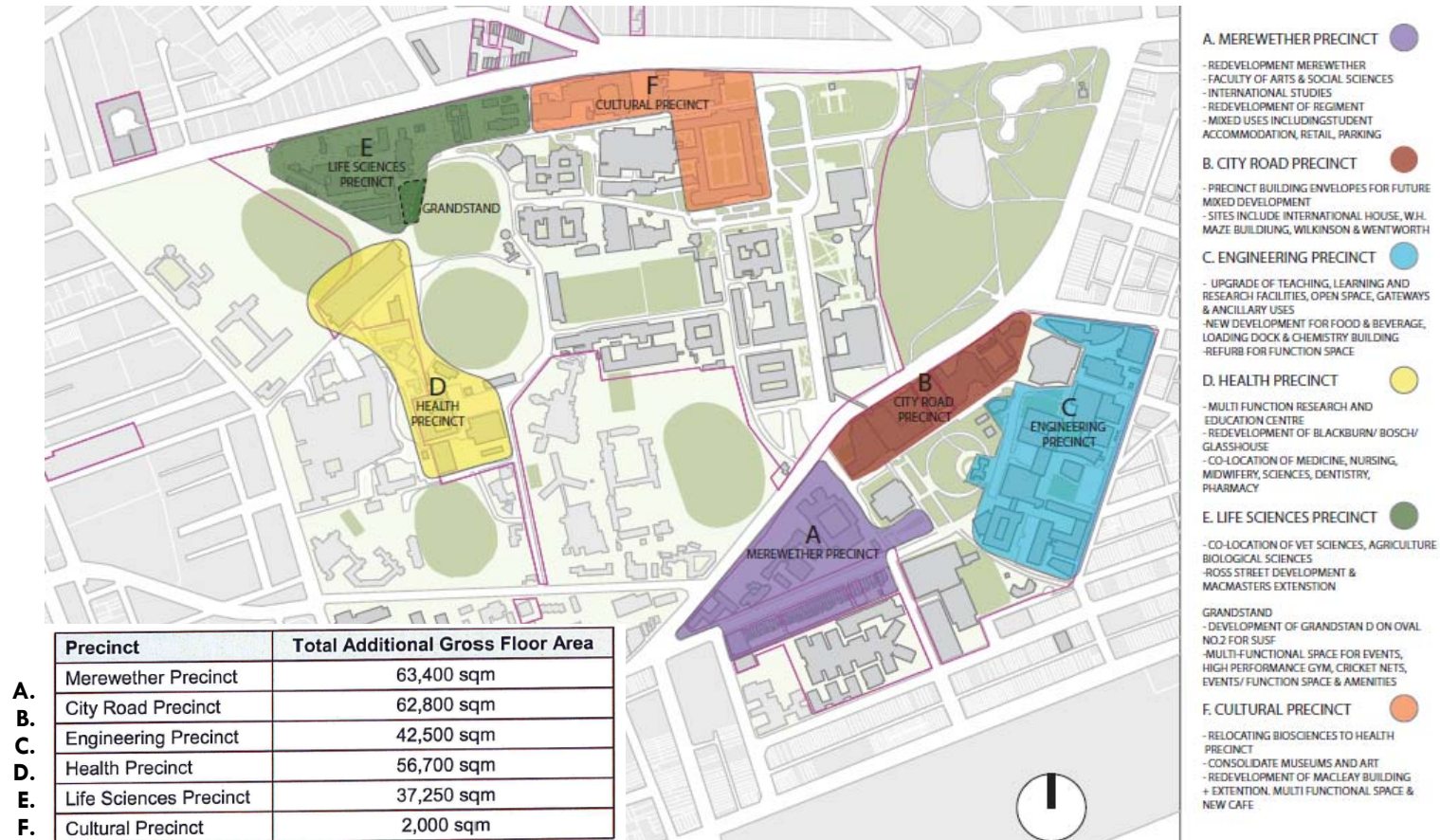
- A development & infrastructure program for Camperdown-Darlington campus – **DA approved** on 16 February 2015 by NSW Minister for Planning (Pru Goward).
- Defining 6 Campus Precincts with Building Envelope Controls for future growth
- 265,000m<sup>2</sup> additional Gross Floor Area (GFA) including demolition of certain buildings
- Supporting strategies (student accommodation, retail, access, infrastructure .....)
- A live policy for Annual Development, Staging & Budget prioritisation

### Integrated environment

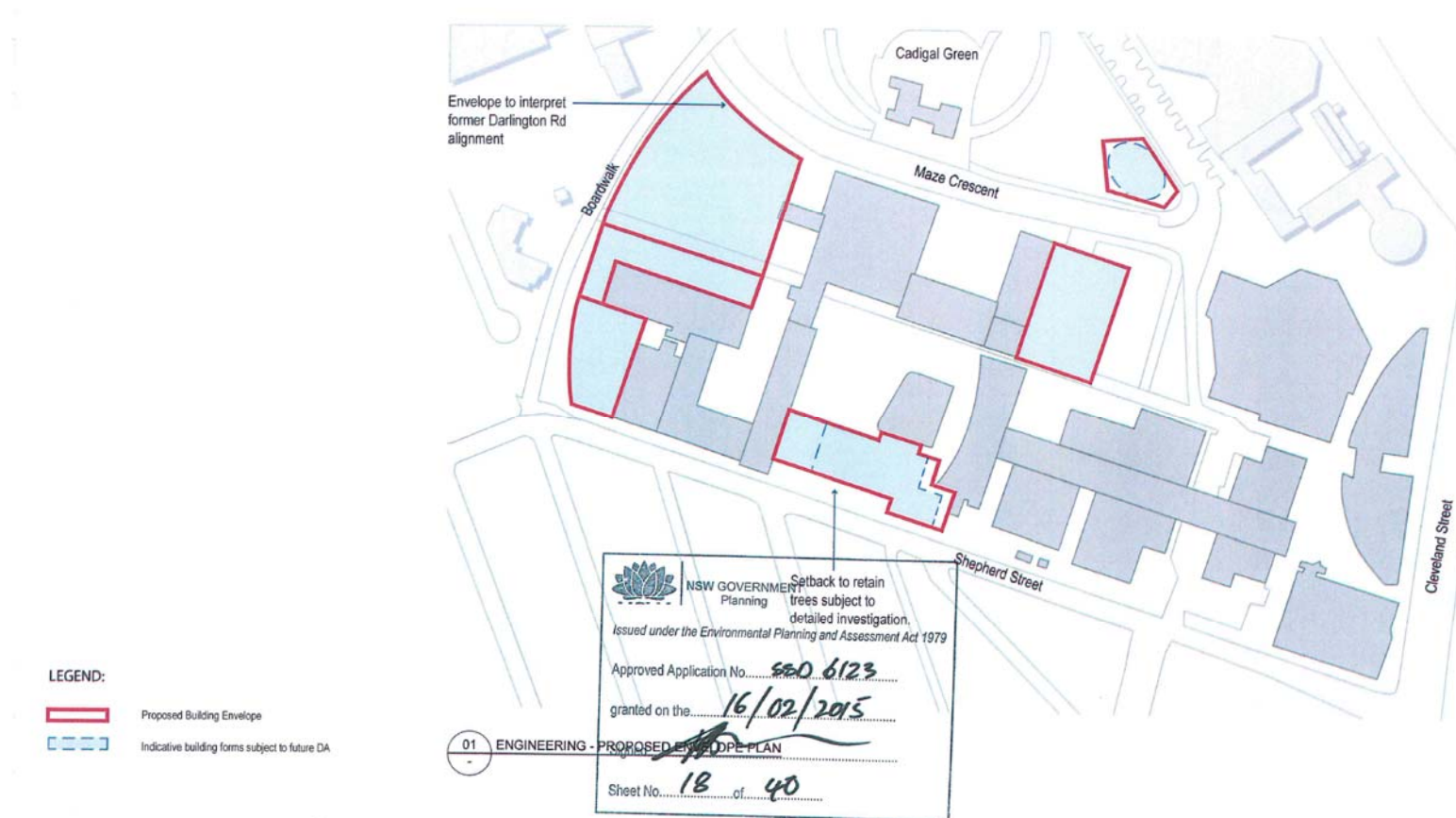
- We will incorporate the natural landscape with the built form to energise general spaces and breakout areas.



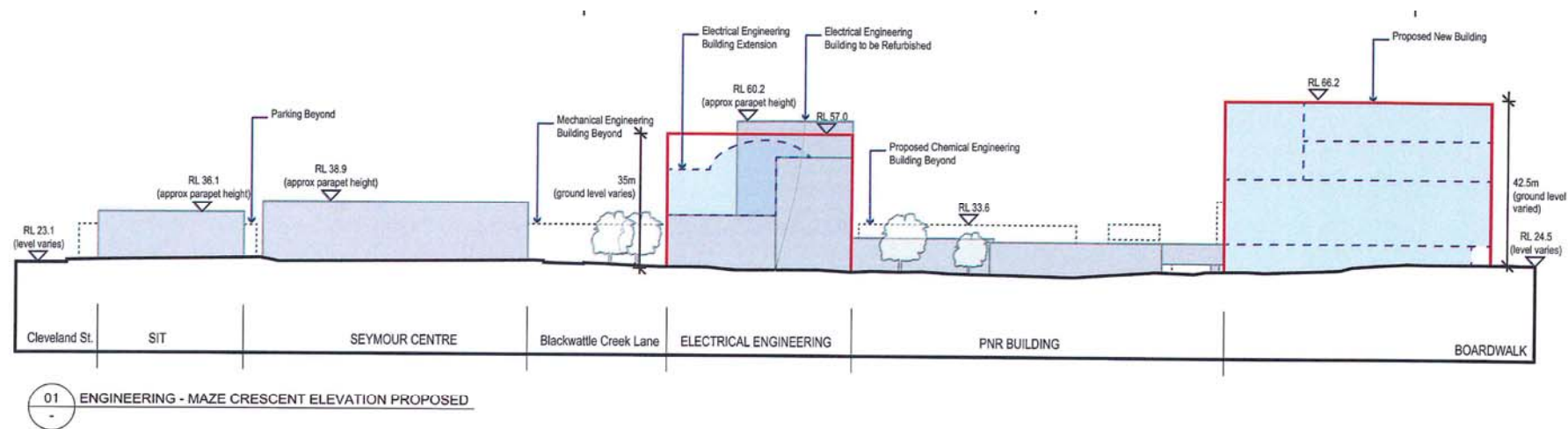
## The 6 Campus Improvement Program precincts



## FEIT Precinct – Approved Envelope Plan



# FEIT Precinct – Approved Maze Crescent Elevation



## LEGEND:

- Site
- Existing Building
- Indicative building forms subject to future DA
- Proposed Building Envelope
- Building Beyond

NSW GOVERNMENT  
Planning

Issued under the Environmental Planning and Assessment Act 1979

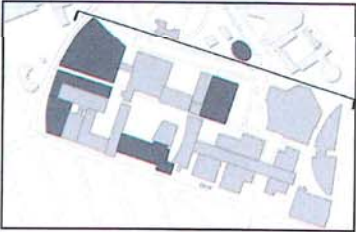
Approved Application No. 450 6123

granted on the 16/02/2015

Signed [Signature]

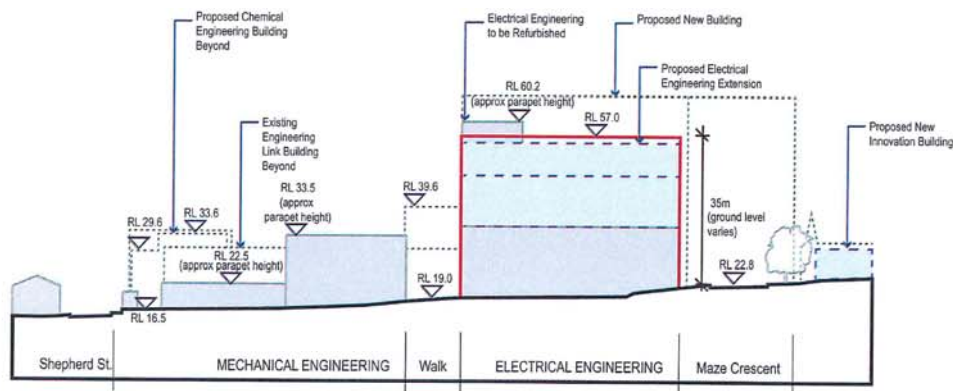
Sheet No. 20 of 40

**NOTE:**  
ALL RL'S REFER TO 2013 UNIVERSITY  
OF SYDNEY 3D CAMPUS SURVEY OR  
CITY OF SYDNEY'S 3D SURVEY



KEY PLAN

# FEIT Precinct – Approved Section 1



01 ENGINEERING - SECTION 1 PROPOSED

- LEGEND:
- Site
  - Existing Building
  - Indicative building forms subject to future DA
  - Proposed Building Envelope
  - Building Beyond



NSW GOVERNMENT  
Planning

Issued under the Environmental Planning and Assessment Act 1979

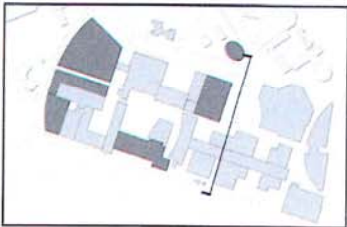
Approved Application No. 50.6123

granted on the 16/02/2015

Signed [Signature]

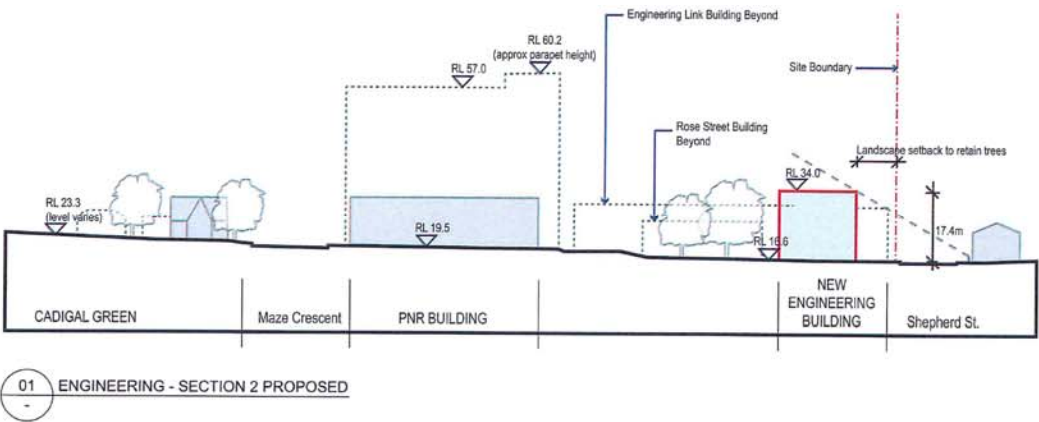
Sheet No. 21 of 40

NOTE:  
ALL RL'S REFER TO 2013 UNIVERSITY  
OF SYDNEY 3D CAMPUS SURVEY OR  
CITY OF SYDNEYS 3D SURVEY



KEY PLAN

# FEIT Precinct – Approved Section 2



- LEGEND:
- Site
  - Existing Building
  - Indicative building forms subject to future DA
  - Proposed Building Envelope
  - Building Beyond

NSW GOVERNMENT  
Planning

Issued under the Environmental Planning and Assessment Act 1979

Approved Application No. 550 6123

granted on the 16/02/2015

Signed [Signature]

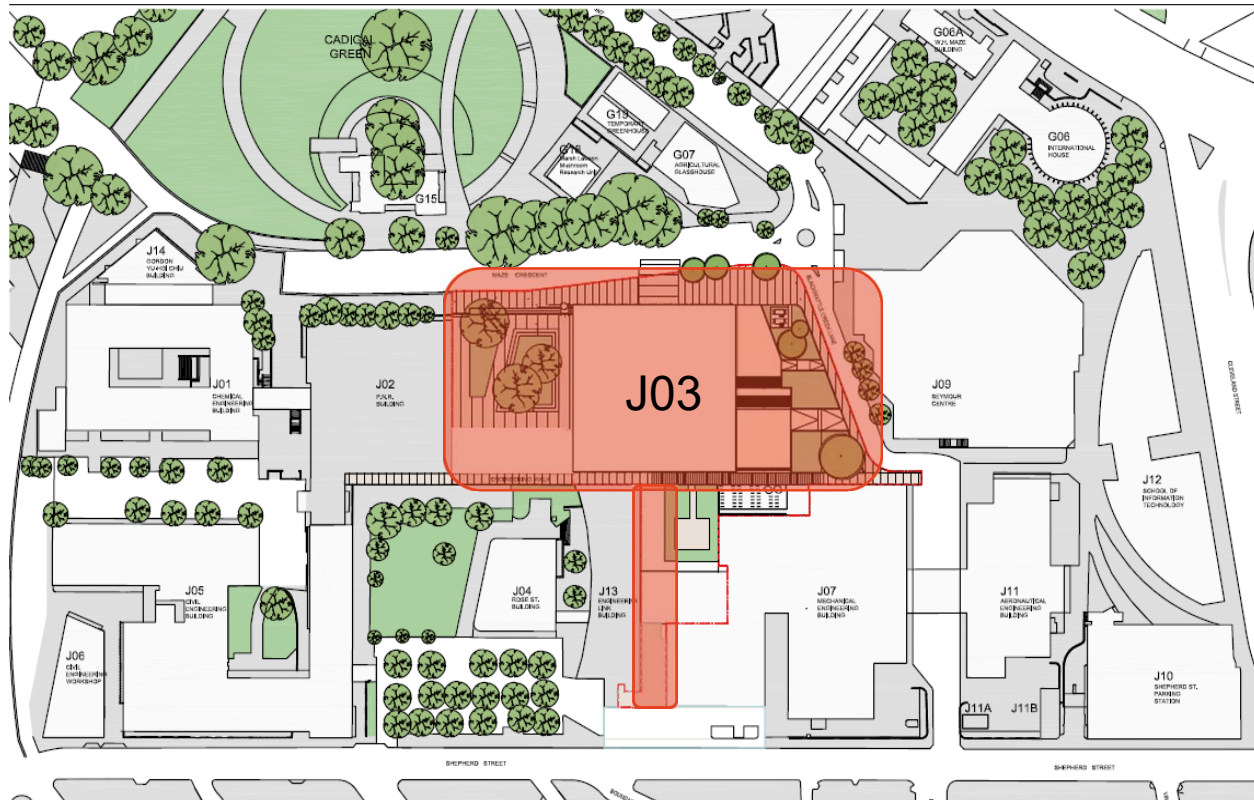
Sheet No. 22 of 40

NOTE:  
ALL RL'S REFER TO 2013 UNIVERSITY  
OF SYDNEY 3D CAMPUS SURVEY OR  
CITY OF SYDNEYS 3D SURVEY



KEY PLAN

## FEIT Precinct – Site Location



- Proposed Programme
- Proposed Early Works Package
- Proposed Development (New building A and refurbishment of Building B)

# Building Overview



**View 1:**  
Corner of Maze Crescent and  
Blackwattle Creek Lane

**View 2:**  
Maze Crescent



**View 3:**  
Blackwattle Creek Lane

# Building Overview



**View 4:**  
Cadigal Green



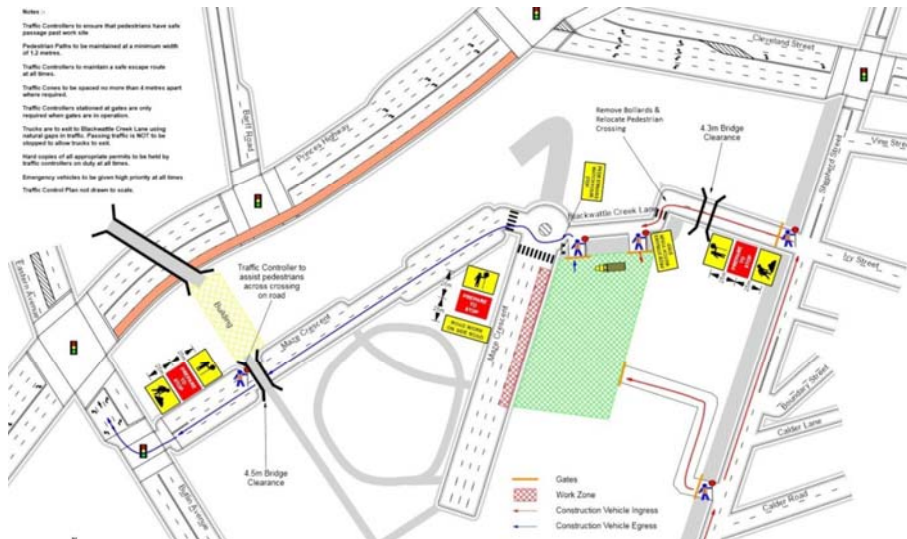
**View 5:**  
Corner of Butlin Avenue and  
Maze Crescent

# Proposed Early Works – What and Why ?

➤ **What are Early Works?** Works to clear and ready site for the future development

➤ **Why perform Early Works?**

- ☐ Mitigate any potential risks with the redirection/installation of underground services
- ☐ Site readiness to allow for future new building



The University of Sydney

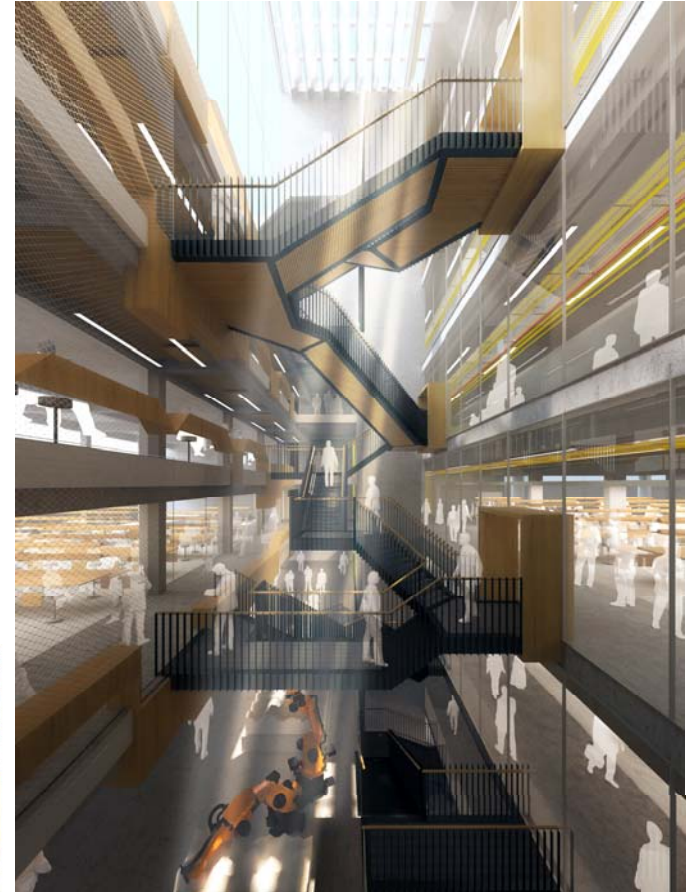
- Commence Early Works – May 2018
- Conclude Early Works – July 2018
- Commence Demolition – July 2018
- Conclude Demolition – September 2018
- Commence Earthworks – November 2018
- Commence Construction – January 2019
- Conclude Construction – August 2020

Page 12

## Proposed New J03 Building

- SSD Application will be lodged – 1<sup>st</sup> quarter of 2018
- The community will be consulted (public exhibition by Dept. Planning)
- Key schedule of accommodation comprises:
  - Refurbishment of J03 South
  - Demolition and Construction of J03 North
  - New School Hub including entry and student facilities
  - New Teaching spaces including 150 student X-Lab
  - New Core Research Facilities
  - New Laboratories and facilities for Electrical, Biomedical and Chemical Engineering
  - Communal space and Public Domain connection between Engineering Walk and Maze Crescent
  - Offices for Academic and Professional Services
  - GFA of 17,111m<sup>2</sup>

## J03 Development – Concept & Design



### Sustainable

- Our environmental and sustainability responsibilities will focus on implementing flexible servicing strategies, use green materials and design ecological solutions.



# Questions & Answers

