

Archival photographic heritage recording
Electrical Engineering Building J03 University of Sydney



Take 10

Campus Infrastructure Services / Archival Heritagephotos / August 2018

Methodology

Campus Infrastructure services commissioned this work to document the heritage J03 Building, University of Sydney.

3 identical hard copies were produced with digital version and all photographic files on disc in back in August 2018.

Due to unexplained delays, this work was not commissioned until scaffolding had been erected around the building and much of the demolition was underway. As a result, much of the building was inaccessible in red & yellow work zones. I was able to photograph the south block of the building, but there were no photographs taken of the north building nor the east, the "tower" building. It was decided to use such photographs as could be taken and source as many as possible of the inaccessible sections from existing material. There was good material available of the sections not demolished so all that was employed. There being no other option available, and as it turned out, there was a number of mobile phone captures of the original building and we were obliged to use them. The quality itself was not in question as a mobile phone can show impressive detail but I was not familiar with the building so could not show the camera position on the scale plan. There was no control over the content or the subject, but I spent time preparing every mobile take to show its best.

Original photographs commissioned here, ones I took, are all tif format and named "Take" whereas outside sourced material, all jpg, is just given a sequence number. As a result, the computer filed the sourced photographs in alphabetical order, but out of numerical order on the Contact Sheets. I was unable to correct this, and am apologetic about it, but hope the reader can interpret the Takes in the right order.

On the scale plans, short arrows were taken from positions within the scope of the plan. Long arrows were taken from the given direction but off plan.

Also, there are red and blue Takes. The red arrows show camera position and direction. Blue marks represent the sourced, ex post photographs. These do not show a direction as I could not tell, and they are simply placed in the room in which they were taken. This is not what I would have chosen, but it is the best option in the circumstances. I have tried to assemble everything we have in the most logical fashion, with as much detail as was available in a professional manner.

The coverage has been of the affected areas so adjacent but unaffected sections of the J03 Building were not documented. In point of fact, the building works were more like stripping out and refurbishing than demolition and building. No structural work was undertaken.

I have taken the recording floor by floor. Each floor has its own numbers, contact sheet and catalogue and scale plan. Basically, there is not enough space on indicator arrows to show more than 2 digits. More than 2 digits just loses meaning and is too hard to read. Hence there is one mini recording for each floor that has its own contact sheet(s), catalogue of Takes and cross-referenced scale plan.

ARCHIVAL AND OTHER NOTES

There are 347 takes altogether in this recording; 241 takes high resolution Takes in digital colour + 106 locally sourced images from the University. For the ad hoc work, I used a Nikon D850 camera. These commissioned photographs, 135MB each and large for an office computer, are also in the files as low-resolution jpg for quick opening in office without extra computer capacity. The files are 8bit saved in Adobe RGB 1998 as tiff for IBM. Irrespective of their source, takes are numbered and cross referenced to the scale plans. All images are stored in original resolution on the discs in back.

All takes are from tripod with camera set at mirror up triggered by electronic pulse.

Lighting was ambient with occasional help from a hand-held LED lamp.

I used all Carl Zeiss ZF1 & ZF2 Distagon & Planar prime lenses for their extreme sharpness & quality: 18mm f3.5, 25mm F2, 28mm f2, 35mm f2, 50mm f1.4, 100mm f2.

Re the images sourced later by the University, I had no option but to use what was the only images available and they are held here as supplied in jpg from a wide variety of mobile phone cameras.

The recording, print, paper & satchel binders in these 3 hard copies of the recording are archival by Albox in South Australia.

All the pages with photographs, the title page and display proofs, are printed with archival Epson K3 inks on 192gsm Archival Matte Paper.

Type pages are Mondi digital guarantee, colour copy guaranteed, FSC laser 120gsm paper & A4 scale plans the same, printed Epson archival with 81N dye base inks. The A3 scale plans are 190gsm Mondi stock & same printing.

All the clear, archival 90micron polypropylene sleeves, both A4 & for the discs, the charcoal case covers, and the labels are archival by Albox.

The discs are Taiyo Yuden DVD-R, sold as JVC and best available quality, recorded with Toast Titanium and verified.

David Liddle

Archival Heritagephotos, August 2018



Take 17, aerial photograph J03 Building from the west

Contact sheet Exterior Takes, sheet 1 of 2



Take 1_0265.jpg



2_0278.jpg



Take 03_5298.tif



Take 04_5300.tif



5-Southern Facade.JPG



Take 06_5979.tif



Take 07_5974.tif



Take 08_5971.tif



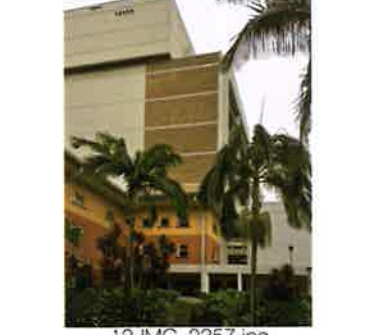
Take 09_5969.tif



Take 10_7211.tif



Take 11_5307.tif



12-IMG_2357.jpg



13-J03 East Facade.JPG



14-Northern Facade.JPG



15-IMG_3630.tif



16-Western Facade.JPG



17-IMG_1893.tif



18-Concrete louvres.JPG



19.L4 3606.tif



20.L2 Courtyar.JPG



Take 21_5304.tif



Take 22_5310.tif



Take 23_5316.tif



Take 24_5317.tif

Contact sheet Exterior Takes, sheet 2 of 2



Take 25_5320.tif



26-IMG_2352.jpg



27-IMG_2354.jpg



28-IMG_2353.jpg



29-IMG_2363.jpg



30-site for PW1986.jpg

Archival photographic heritage recording Building J03, Electrical Engineering, University of Sydney

Catalogue of Takes

Take Direction Lens Space Showing

INTERIOR TAKES LEVEL 2 / ORIGINAL PHOTOGRAPHS

01	NW	28mm	Engineers walk	Entrance to Electrical Engineering from Engineers Walk
02	NE	18mm	201	Lift lobby, lift doors, tiled walls, tiled floor, ceiling, lights
03	S	18mm	201	Lobby, polished door Gents, hand basin
04	E	18mm	202	Cleaning sink
05	S	18mm	203	Gents
06	N	18mm	201	Lobby, glass door
07	S	18mm	201	Lifts, lobby
08	NE	18mm	201	Lobby, tiled walls, floor, ceiling
09	N	18mm	230	Work shop facilities
10	W	18mm	230	Work shop facilities
11	S	18mm	230	Work shop facilities
12	W	18mm	230	Open roller door entrance
13	E	18mm	245	Work shop facilities
14	N	18mm	232	Work shop facilities
15	NW	18mm	231	Open area
16	E	18mm	233	Work shop facilities
17	N	18mm	235	Work shop facilities
18	N	18mm	237	Work shop facilities
19	E	18mm	238	Work shop facilities
20	E	18mm	231	Work shop facilities
21	E	100mm	231	Detail hoist rail track
22	S	18mm	231	Work shop facilities
23	S	100mm	231	Detail hoist rail track
24	W	18mm	231	Work shop facility
25	N	18mm	239	Work shop facility
26	S	18mm	239	Work shop facility

<i>Take</i>	<i>Direction</i>	<i>Lens</i>	<i>Space</i>	<i>Showing</i>
27	S	18mm	242	Work shop facility
28	W	18mm	240	Work shop facility
29	W	18mm	241	Work shop facility
30	N	25mm	236	Stairs
31	W	18mm	201C	Fire stairs
32	N	18mm	201C	Fire stairs

INTERIOR TAKES LEVEL 2 / SOURCED PHOTOGRAPHS – UNKNOWN SUBJECT

33	261
34	261
35	261
36	261
37	261
38	261
39	265
40	265
41	265
42	265
43	265
44	265
45	265
46	265
47	265
48	265

Contact sheet Level 2,1 of 2



33 - RM261.JPG



34 - RM261.JPG



35 - RM261.JPG



36 - RM261.JPG



37 - RM261.JPG



38 - RM261.JPG



39 - RM265.JPG



40 - RM265.JPG



41 - RM265.JPG



42 - RM265.JPG



43 - RM265.JPG



44 - RM265.JPG



45 - RM265.JPG



46 - RM265.JPG



47 - RM265.JPG



48 - RM.265.JPG



Take 01_5839.tif



Take 02_5852.tif



Take 03_5851.tif



Take 04_5855.tif



Take 05_5858.tif



Take 06_5860.tif



Take 07_5380.tif



Take 08_5382.tif

Contact sheet Level 2, 2 of 2



Take 09_5384.tif



Take 10_5386.tif



Take 11_5390.tif



Take 12_5391.tif



Take 13_5394.tif



Take 14_5396.tif



Take 15_5400.tif



Take 16_5408.tif



Take 17_5405.tif



Take 18_5409.tif



Take 19_5412.tif



Take 20_5415.tif



Take 21_5433.tif



Take 22_5417.tif



Take 23_5435.tif



Take 24_5418.tif



Take 25_5421.tif



Take 26_5424.tif



Take 27_5427.tif



Take 28_5429.tif



Take 29_5430.tif



Take 30_5454.tif



Take 31_5843.tif



Take 32_5846.tif



NOTE

Some photographs, not accessible
at time of recording, had to be sourced later
and are shown here in blue.
Their direction is not known.



THE UNIVERSITY OF
SYDNEY

project:
J03

ELECTRICAL ENGINEERING BUILDING FLOOR PLAN

title:

LEVEL 02

date: 02-05-2018

drawing no: A_J03-L02

scale: 1 : 250 @ A3

rev: -

drawn:

PRELIMINARY

FOR REVIEW

check:

FOR TENDER

FOR CONSTRUCTION

Archival photographic heritage recording Level 3 Building J03, Electrical Engineering, University of Sydney

Catalogue of Takes

<i>Take</i>	<i>Direction</i>	<i>Lens</i>	<i>Phone</i>	<i>Showing</i>
-------------	------------------	-------------	--------------	----------------

INTERIOR TAKES LEVEL 3 / ORIGINAL PHOTOGRAPHS

01_5865	NE	28mm		Lift lobby, lift doors, glass doors
02_5863	N	18mm		Lift lobby, lift doors, glass doors
03_5441	N	28mm		Lift lobby, lift doors, glass doors
04_5439	S	28mm		Lift lobby, lift doors, ceiling, walls, floor
05_5442	NW	25mm		Lift lobby, lift doors, glass doors
06_5867	SW	28mm		Lift lobby, lift doors, wooden doors, noticeboard
07_5438	S	28mm		Lift lobby, lift doors, ceiling, walls, floor
08_5444	W	28mm		Space 330
09_5447	E	28mm		Space 330
10_5450	N	25mm		Space 340
11_5451	S	25mm		Space 340
12_5456	N	18mm		Space 340 extension
13_5869	N	28mm		Lift lobby, lift doors, noticeboard, wooden Gents door
14_5870	E	18mm		Cleaners Space 302
15_5876	N	18mm		Gents 303
16_5498	E	18mm		Main steps mezzanine landing 2-3
17_5501	E	18mm		Main steps mezzanine landing 2-3

INTERIOR TAKES LEVEL 3 / SOURCED PHOTOGRAPHS

18.3583	NW	3.99mm	iPhone 7	Lower court yard
19].3680	W	"	"	Iron sliding gates
20].3582	E	"	"	Pedestrian entrance from street iron gates
21.351.1	N	"	"	Lecture theatre 351
22.351.2	NE	"	"	Lecture theatre 351
23.351.3	NW	"	"	Lecture theatre 351

Contact sheet Level 3, 1 of 1



18.3583.tif



19.3580.jpg



20.3582.tif



21.351.1.JPG



22.351.2.JPG



23.351.3.JPG



Take 01_5865.tif



Take 02_5863.tif



Take 03_5441.tif



Take 04_5439.tif



Take 05_5442.tif



Take 06_5867.tif



Take 07_5438.tif



Take 08_5444.tif



Take 09_5447.tif



Take 10_5450.tif



Take 11_5451.tif



Take 12_5456.tif



Take 13_5869.tif



Take 14_5870.tif



Take 15_5876.tif



Take 16_5498.tif



Take 17_5501.tif



NOTE

Some photographs, not accessible at time of recording, had to be sourced later from earlier files. They are shown here in blue.



THE UNIVERSITY OF
SYDNEY

project:
J03

ELECTRICAL ENGINEERING BUILDING FLOOR PLAN

| title:

LEVEL 03

date: 02-05-2018

drawing no: A_J03-L03

scale: 1 : 250 @ A3

rev: -

drawn:
check:

PRELIMINARY
FOR TENDER

FOR REVIEW	
FOR CONSTRUCTION	

Archival photographic heritage recording Level 4 Building J03, Electrical Engineering, University of Sydney

Catalogue of Takes

<i>Take</i>	<i>Direction</i>	<i>Lens</i>	<i>Camera</i>	<i>Showing</i>
INTERIOR TAKES LEVEL 4 / MIXED ORIGINAL PHOTOGRAPHS (Nikon D850) SOURCED (Phone camera)				
01_5486	NW	28mm	Nikon D850	Open tiled gallery Level 4, stairs, elevated walkway
02_5496	W	18mm	" "	Open tiled gallery Level 4, stairs, elevated walkway
03_5490	E	28mm	" "	Stairs, blue steel handrails, northern wing
04_5488	E	28mm	" "	Covered gallery, steel handrail, concrete awning, concrete deck
05.3566	E	3.99mm	iPhone 7	Concrete stairs, steel balustrade & handrail, galleries either side
06.3567	SE	"	"	Eastern tower block, concrete awning
07.3559	NE	"	"	Concrete levels & awnings of southern block, blue steel railing
08.3553	NW	"	"	Covered gallery, red paving tiles, concrete columns
09.3555	N	"	"	Covered gallery, red paving tiles, concrete columns
10.3560	E	"	"	Covered gallery, red paving tiles, concrete columns
11_5368	NW	28mm	Nikon D850	Covered gallery, red paving tiles, concrete columns, stairs, safety bannisters
12.3568	E	3.99mm	iPhone 7	Lower courtyard, red paving
13_5461	N	18mm	Nikon D850	Lift lobby, glass doors
14_5543	E	18mm	" "	Lift lobby, glass doors
15_5460	W	18mm	" "	Lift lobby, ceiling, walls, floor, corridor to exterior gallery
16_5463	NE	18mm	" "	Space C401, doors, passage
17_5467	NW	18mm	" "	Room 401
18_5476	NW	28mm	" "	Room 428
19_5881	NW	18mm	" "	Stairs 410 Start-lowest floor
20_5471	S	18mm	" "	Corridor C401
21_5473	NW	28mm	" "	Corridor 436
22_5532	SW	18mm	" "	Student space 430
23_5535	N	18mm	" "	Student space 430
24_5537	NW	18mm	" "	Student space 430
25_5539	N	18mm	" "	Student space 430

26_5542	SE	18mm	"	"	Student space	430
<i>Take</i>	<i>Direction</i>	<i>Lens</i>	<i>Space</i>	<i>Showing</i>		
27_5516	S	18mm	"	"	Student space	435
28_5519	E	18mm	"	"	Student space	435
29_5522	W	18mm	"	"	Student space	435
30_5529	E	18mm	"	"	Student space	435
31_5530	NE	18mm	"	"	Student space	435B
32_5525	E	18mm	"	"	Student space	440/major breakout zone
33_5527	W	18mm	"	"	Student space	440/major breakout zone
34_5514	E	18mm	"	"	Student space	440
35_5512	NE	18mm	"	"	Student space	440
36_5510	E	18mm	"	"	Student space	440
37_5508	S	18mm	"	"	Student space	440
38_5506	SE	18mm	"	"	Student space	440
39_5505	N	18mm	"	"	Student space	440
40_5502	W	18mm	"	"	Student space	440
41_5483	SE	28mm	"	"	Space 446	
42_5477	E	28mm	"	"	Corridor 436	
43_5546	SE	18mm	"	"	Stairs 490	
44_5353	SE	18mm	"	"	Lecture Theatre 450	
45_5364	SE	18mm	"	"	Lecture Theatre 450	
46_5347	S	18mm	"	"	Lecture Theatre 450	
47_5362	SW	28mm	"	"	Lecture Theatre 450	
48_5347	W	18mm	"	"	Lecture Theatre 450	
49_5360	SW	18mm	"	"	Lecture Theatre 450	
50_5355	N	18mm	"	"	Lecture Theatre 450	

<i>Take</i>	<i>Direction</i>	<i>Lens</i>	<i>Space</i>	<i>Showing</i>
-------------	------------------	-------------	--------------	----------------

INTERIOR TAKES LEVEL 4 / SOURCED PHOTOGRAPHS

51.480.1		N/a	N/a	Room 480
52.480.2		3.99mm	iPhone 7	Room 480
53.480A.1		4.15mm	iPhone 5S	Room 480A
54.480A.2		3.99mm	iPhone 7	Room 480A
55.476.1		N/a	N/a	Room 476
56.476.2		3.99	iPhone 7	Room 476
57.475.1		4.15mm	iPhone 5S	Room 475
58.475.2		N/a	N/a	Room 475
59.475.3		N/a	N/a	Room 475
60.475.4		3.99mm	IPhone 7	Room 475
61.474		N/a	N/a	Room 474
62.473		N/a	N/a	Room 473
63.472		N/a	N/a	Room 472
64.471.1		3.99mm	iPhone 7	Room 471
65.470.2		"	"	Room 470
66.470.3		N/a	N/a	Room 470
67.470.4		N/a	N/a	Room 470
68.470.4		N/a	N/a	Room 470
69.470.5		N/a	N/a	Room 470
70.460.1		N/a	N/a	Room 460
71.460.2		N/a	N/a	Room 460
72.460.3		3.99mm	iPhone 7	Room 460

Contact sheet Level 4, 2 of 3



Take 03_5490.tif



Take 04_5488.tif



Take 05_3566.tif



Take 06_3567.tif



Take 07_3559.tif



Take 08_3553.JPG



Take 09_3555.tif



Take 10_3560.tif



Take 11_5368.tif



Take 12_3568.tif



Take 13_5461.tif



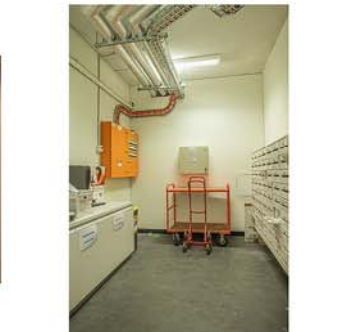
Take 14_5543.tif



Take 15_5460.tif



Take 16_5463.tif



Take 17_5467.tif



Take 18_5476.tif



Take 19_5881.tif



Take 20_5471.tif



Take 21_5473.tif



Take 22_5532.tif



Take 23_5535.tif



Take 24_5537.tif



Take 25_5539.tif



Take 26_5542.tif

Contact sheet Level 4, 3 of 3



Take 27_5516.tif



Take 28_5519.tif



Take 29_5522.tif



Take 30_5529.tif



Take 31_5530.tif



Take 32_5525.tif



Take 33_5527.tif



Take 34_5514.tif



Take 35_5512.tif



Take 36_5510.tif



Take 37_5508.tif



Take 38_5506.tif



Take 39_5505.tif



Take 40_5502.tif



Take 41_5483.tif



Take 42_5477.tif



Take 43_5546.tif



Take 44_5353.tif



Take 45_5364.tif



Take 46_5347.tif



Take 47_5362.tif



Take 48_5357.tif



Take 49_5360.tif



Take 50_5355.tif

Contact sheet Level 4, 1 of 3



51.480.1.JPG



52.480.2.JPG



53.480A.1.JPG



54.480A.2.JPG



55.476.1.JPG



56.476.2.JPG



57.475.1.JPG



58.475.2.JPG



59.475.3.JPG



60.475.4.JPG



61.474.JPG



62.473.JPG



63.472.JPG



64.471.1.JPG



65.470.2.JPG



66.470.3.JPG



67.470.4.JPG



68.470.4.JPG



69.470.5.JPG



70.460.1.JPG



71.460.2.JPG



72.460.3.JPG



Take 01_5486.tif



Take 02_5496.tif

100mm

200mm

300mm



NOTE

Some photographs, not accessible
at time of recording, had to be sourced later
and are shown here in blue.
Their direction is not known..



THE UNIVERSITY OF
SYDNEY

project:

J03
Electrical Engineering Building

title:

FLOOR PLAN
LEVEL 04

date: 02-05-2018

drawing no: A_J03-L04

scale: 1/250@A3

rev: -

Campus Infrastructure & Services • tel. 02 9351 7838
www.facilities.usyd.edu.au/

Archival photographic heritage recording Level 5 Building J03, Electrical Engineering, University of Sydney

Catalogue of Takes

Take	Direction	Lens	Camera	Showing
INTERIOR TAKES LEVEL 5 / ORIGINAL PHOTOGRAPHS				
02_5549	S	18mm	Nikon D860	Lift lobby Level 5, lift doors, ceiling, walls, floor
03_5550	NW	18mm	" "	Lift lobby Level 5, lift doors, ceiling, walls, floor
04_5555	S	18mm	" "	Gents 503
05_5556	S	18mm	" "	Ladies 505
06_5606	W	18mm	" "	Room 507
07_5610	S	18mm	" "	Room 507
08_5612	E	18mm	" "	Room 507
09_5559	NW	18mm	" "	Stairs 500
10_5562	S	18mm	" "	Electrical 500G
11_5568	S	18mjm	" "	Space 515
12_5570	N	18mm	" "	Space 515
13_5572	W	18mm	" "	Space 522
14_5884	S	18mm	" "	Space 522
15_5890	S	50mm	" "	Space 522
16_5582	W	18mm	" "	Space 522
17_5587	W	18mm	" "	Space 522
18_5591	W	18mm	" "	Space 522
19_5580	SE	18mm	" "	Space 522
20_5574	S	18mm	" "	Space 522
21_5594	N	18mm	" "	Post Grad in Space 530
22_5595	SW	18mm	" "	Post Grad in Space 530
23_5597	W	18mm	" "	Stairs 549
24_5600	SW	18mm	" "	Stairs 549

Take	Direction	Lens	Camera	Showing
INTERIOR TAKES LEVEL 5 / SOURCED PHOTOGRAPHS – UNKNOWN SUBJECT				
01-LVL5	NW	3.99mm	iPhone 7	Paved exterior gallery Level 5
25.550A	N/a	“	“	Room 550A
26.550	N/a	“	“	Room 550B
27.550B	N/a	“	“	Room 550B
28.552	N/a	N/a	N/a	Room 552
29.554	N/a	3.99	iPhone 7	Room 551
30.554	N/a	4.5	iPhone 5S	Room 554
31.555.1	N/a	3.99	iPhone 7	Room 555
32.555.2	N/a	“	“	Room 555
33.555.3	N/a	“	“	Room 555

Contact sheet Level 5, 1 of 2



25.550A.JPG



26_550B.1.jpg



27.550B.3.JPG



28.552.JPG



29.554.2.JPG



30.554.2.JPG



31.555.1.JPG



32.555.2.jpg



33.555.3.JPG



Take 01-LVL5.JPG



Take 02_5549.tif



Take 03_5550.tif



Take 04_5555.tif



Take 05_5556.tif



Take 06_5606.tif



Take 07_5610.tif



Take 08_5612.tif



Take 09_5559.tif



Take 10_5562.tif



Take 11_5568.tif



Take 12_5570.tif



Take 13_5572.tif



Take 14_5884.tif



Take 15_5890.tif

Contact sheet Level 5, 2 of 2



Take 16_5582.tif



Take 17_5587.tif



Take 18_5591.tif



Take 19_5580.tif



Take 20_5574.tif



Take 21_5594.tif



Take 22_5595.tif



Take 23_5597.tif



Take 24_5600.tif

100mm

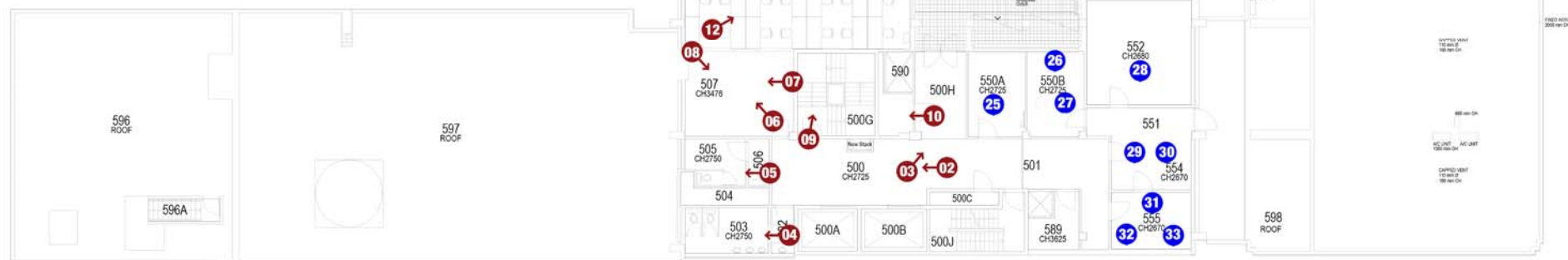
200mm

300mm



NOTE

Some photographs, not accessible
at time of recording, had to be sourced later
and are shown here in blue.
Their direction is not known.



THE UNIVERSITY OF
SYDNEY

project:
J03

LEVEL 05
ELECTRICAL ENGINEERING BUILDING FLOOR PLAN

title:

date: 02-05-2018 drawn no: A_J03-L05

scale: 1 : 250 @ A3

rev: -

drawn:	PRELIMINARY	FOR REVIEW
check:	FOR TENDER	FOR CONSTRUCTION



Archival photographic heritage recording Level 6 Building J03, Electrical Engineering, University of Sydney

Catalogue of Takes

<i>Take</i>	<i>Direction</i>	<i>Lens</i>	<i>Camera</i>	<i>Showing</i>
INTERIOR TAKES LEVEL 6 / ORIGINAL PHOTOGRAPHS				
01_5646	SE	28mm	Nikon D850	Exterior gallery Level 6
02_5649	NW	28mm	" "	Exterior gallery Level 6
03_5616	S	18mm	" "	Lift lobby Level 6, walls, ceiling, floor, lift doors
04_5614	S	18mm	" "	Space 603 Gents
05_5618	W	18mm	" "	Lift lobby, corridor to external gallery
06_5894	SE	18mm	" "	Fire stairs 690
07_5623	S	18mm	" "	Room 612
08_5624	N	18mm	" "	Room 612
09_5653	S	18mm	" "	Room 614
10_5654	W	18mm	" "	Room 614
11_5656	NE	18mm	" "	Room 614
12_5659	NW	18mm	" "	Room 614
13_5662	S	18mm	" "	Room 620
14_5666	SE	18mm	" "	Room 620
15_5669	N	18mm	" "	Room 620
16_5673	NW	18mm	" "	Room 620
17_5628	S	28mm	" "	Room 630
18_5636	SE	18mm	" "	Room 630
19_5634	N	28mm	" "	Room 630
20_5629	NW	28mm	" "	Room 630
21_5643	NW	28mm	" "	Room 630
22_5639	NW	28mm	" "	Room 632

<i>Take</i>	<i>Direction</i>	<i>Lens</i>	<i>Camera</i>	<i>Showing</i>
INTERIOR TAKES LEVEL 6 / SOURCED PHOTOGRAPHS				
23.601A	N/a	4.8mm	SM-Galaxy	Room 601A
24.601	N/a	4.8mm	"	" Room 601
25.650	N/a	3.99mm	iPhone 7	Room 650
26.651	N/a	3.99mm	" "	Room 651
27.654	N/a	3.99mm	" "	Room 654
28.656	N/a	3.99mm	" "	Room 656
29.657	N/a	3.99mm	" "	Room 657

Contact sheet Level 6, 1 of 2



23.601A.jpg



24.601.jpg



25.650.JPG



26.651.JPG



27.654.JPG



28.656.JPG



29.657.JPG



Take 01_5646.tif



Take 02_5649.tif



Take 03_5616.tif



Take 04_5614.tif



Take 05_5618.tif



Take 06_5894.tif



Take 07_5623.tif



Take 08_5624.tif



Take 09_5653.tif



Take 10_5654.tif



Take 11_5656.tif



Take 12_5659.tif



Take 13_5662.tif



Take 14_5666.tif



Take 15_5669.tif



Take 16_5673.tif



Take 17_5628.tif

Contact sheet Level 6, 2 of 2



Take 18_5636.tif



Take 19_5634.tif



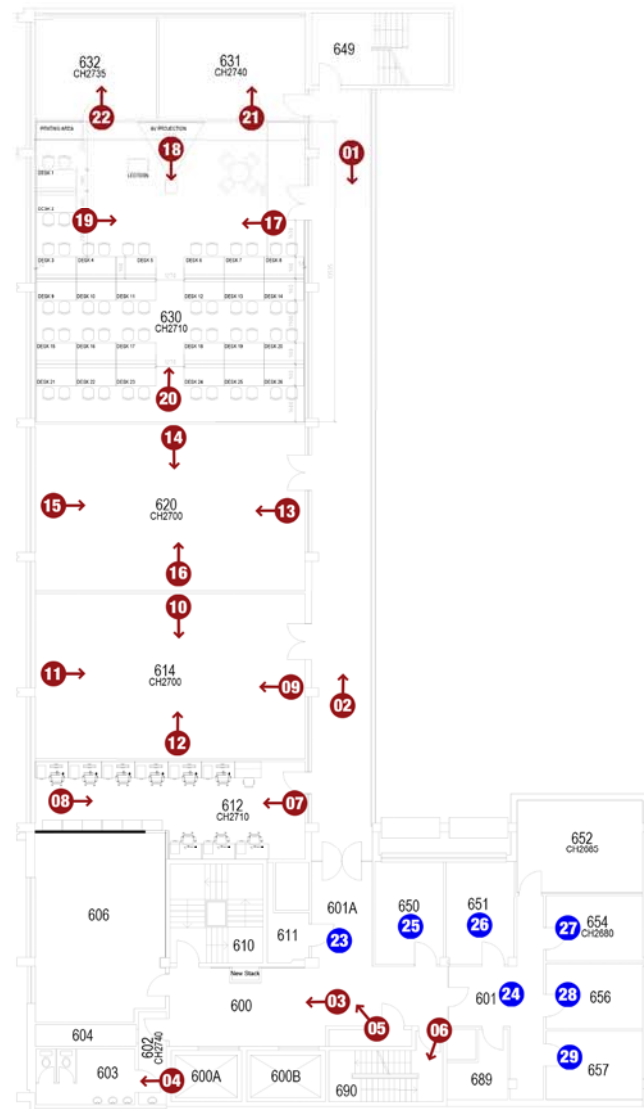
Take 20_5629.tif



Take 21_5643.tif



Take 22_5639.tif



NOTE
Some photographs, not accessible at time of recording, had to be sourced later and are shown here in blue. Their direction is not known.



project: J03
ELECTRICAL ENGINEERING BUILDING FLOOR PLAN

title: LEVEL 06

date: 02-05-2018	drawing no: A_J03-L06
scale: 1 : 250 @ A3	rev: -
drawn: PRELIMINARY	FOR REVIEW
check: FOR TENDER	FOR CONSTRUCTION



Archival photographic heritage recording Level 7 Building J03, Electrical Engineering, University of Sydney

Catalogue of Takes

<i>Take</i>	<i>Direction</i>	<i>Lens</i>	<i>Camera</i>	<i>Showing</i>
INTERIOR TAKES LEVEL 7 / ORIGINAL PHOTOGRAPHS				
01_5759	SE	28umm	Nikon D850	External gallery Level 7
02_5761	NW	28mm	" "	Detail blue painted steel safety rail, bannisters & hand rail
03_5695	W	28mm	" "	External gallery Level 7
04_5764	SE	35mm	" "	External gallery Level 7
05_5674	S	18mm	" "	Lift lobby lift doors, ceiling, walls, floor
06_5676	SW	18mm	" "	Lift lobby, doors, ceiling, walls, floor
07_5678	W	18mm	" "	Lift lobby lift, corridor to external gallery
08_5682	S	18mm	" "	Space 703 Gents
09_5686	S	18mm	" "	Space 706 Ladies
10_5688	NW	18mm	" "	Stairs 749
11_5692	E	18mm	" "	Central stairs 700A
12_5696	SE	18mm	" "	Space 712
13_5698	NE	18mm	" "	Space 712
14_5703	NW	18mm	" "	Space 712
15_5705	S	18mm	" "	Space 712
16_5715	SE	18mm	" "	Space 714 Eating
17_5710	SE	18mm	" "	Space 715B Kitchen
18_5713	NW	18mm	" "	Space 715 Eating\
19_5719	W	18mm	" "	Space 714 Break-out/relax
20_5723	N	18mm	" "	Space 713 Boardroom
21_5726	NW	18mm	" "	Space 720 Post graduates
22_5729	S	18mm	" "	Room 716
23_5730	S	18mm	" "	Room 717
24_5734	S	18mm	" "	Room 718
25_5737	S	18mm	" "	Room 719
26_5739	S	18mm	" "	Room 720

<i>Take</i>	<i>Direction</i>	<i>Lens</i>	<i>Camera</i>		<i>Showing</i>
27_5740	S	18mm	“	“	Room 722
28_5743	S	18mm	“	“	Room 723
29_5746	SW	18mm	“	“	Room 724 Project room
30_5748	N	18mm	“	“	Room 724 Project room
31_5752	N	18mm	“	“	Room 725 Workshop
32_5754	E	18mm	“	“	Room 720 Post graduates
33_5755	N	18mm	“	“	Room 720 Post graduates

INTERIOR TAKES LEVEL 7 / SOURCED PHOTOGRAPHS

34.701	N/a	4.8mm	SM-Galaxy		Room 701
35.750	N/a	4.8mm	“	“	Room 750
36.751	N/a	4.8mm	“	“	Room 751
37.752.1	N/a	4.8mm	“	“	Room 752
38.752.2	N/a	4.8mm	“	“	Room 752
39.754	N/a	4.8mm	“	“	Room 754
40.756	N/a	4.8mm	”	“	Room 756
41.757	N/a	4.8mm	“	“	Room 757
42.789.1	N/a	4.8mm	“	“	Room 789
43.789.2	N/a	4.8mm	“	“	Room 789

Contact sheet Level 7, 1 of 2



34.701.jpg



35.750.jpg



36.751.jpg



37.752.1.jpg



38.752.2.jpg



39.754.jpg



40.756.jpg



41.757.jpg



42.789.1.jpg



43.789.2.jpg



Take 01_5759.tif



Take 02_5761.tif



Take 03_5695.tif



Take 04_5764.tif



Take 05_5674.tif



Take 06_5676.tif



Take 07_5678.tif



Take 08_5682.tif



Take 09_5686.tif



Take 10_5688.tif



Take 11_5692.tif



Take 12_5696.tif



Take 13_5698.tif



Take 14_5703.tif

Contact sheet Level 7, 2 of 2



Take 15_5705.tif



Take 16_5715.tif



Take 17_5710.tif



Take 18_5713.tif



Take 19_5719.tif



Take 20_5723.tif



Take 21_5726.tif



Take 22_5729.tif



Take 23_5730.tif



Take 24_5734.tif



Take 25_5737.tif



Take 26_5739.tif



Take 27_5740.tif



Take 28_5743.tif



Take 29_5746.tif



Take 30_5748.tif



Take 31_5752.tif



Take 32_5754.tif

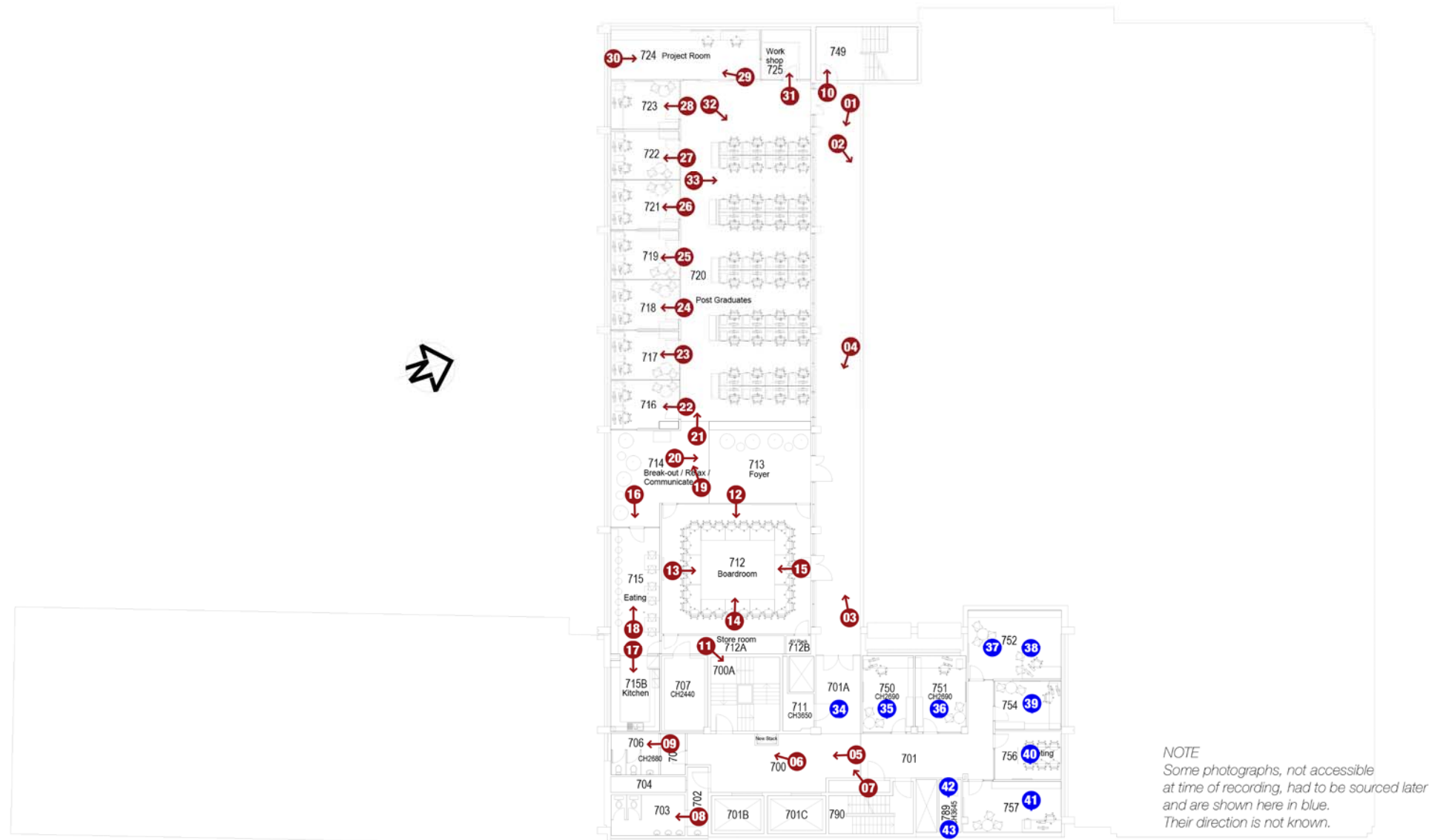


Take 33_5755.tif

100mm

200mm

300mm



project:
J03
ELECTRICAL ENGINEERING BUILDING FLOOR PLAN

title:
LEVEL 07

date: 02-05-2018 drawing no: A_J03-L07

scale: 1 : 250 @ A3

rev: -

drawn:	PRELIMINARY	FOR REVIEW
check:	FOR TENDER	FOR CONSTRUCTION

Archival photographic heritage recording Level 8 Building J03, Electrical Engineering, University of Sydney

Catalogue of Takes

<i>Take</i>	<i>Direction</i>	<i>Lens</i>	<i>Camera</i>	<i>Showing</i>
INTERIOR TAKES LEVEL 8 / ORIGINAL PHOTOGRAPHS				
01_5767	SW	28mm	Nikon D850	Space 800 Lift lobby
02_5796	NW	25mm	" "	Space 800 Lift lobby, corridor, panel door
03_5772	W	25mm	" "	Space 810 Corridor
04_5775	SE	25mm	" "	Space 802, Cleaner sink
05_5777	SW	25mm	" "	Space 803, Gents
06_5781	SW	25mm	" "	Space 805, Ladies
07_5782	NW	18mm	" "	Stairway 800, lowest floor/start
08_5784	S	18mm	" "	Stairway 800, landing, 2 doors
09_5790	SW	18mm	" "	Room 807
10_5792	SW	18mm	" "	Room 808
11_5793	SW	18mm	" "	Room 809
12_5898	SW	18mm	" "	Room 824
13_5795	NE	28mm	" "	Space 820
14_5800	SE	28mm	" "	Room 821, safe door
15_5803	E	18mm	" "	Room 822
16_5799	SW	18mm	" "	Room 820
17_5806	W	18mm	" "	Room 823, Acoustic lab
18_5809	E	18mm	" "	Room 823, Acoustic lab
19_5811	NW	18mm	" "	Room 823, Acoustic lab
20_5813	W	18mm	" "	Space 830
21_5816	NW	18mm	" "	Space 830
22_5822	SW	18mm	" "	Space 830
23_5824	S	18mm	" "	Room 836
24_5827	S	18mm	" "	Room 837
25_5828	S	18mm	" "	Room 838
26_5830	S	18mm	" "	Kitchen in Space 840

<i>Take</i>	<i>Direction</i>	<i>Lens</i>	<i>Camera</i>		<i>Showing</i>
27_5833	W	18mm	“	“	Room 842
28_5916	W	18mm	“	“	Room 843
29_5836	W	18mm	“	“	Room 844
30_5818	E	18mm	“	“	Space 840
31_5821	SE	18mm	“	“	Space 840
32_5905	W	18mm		‘ ‘	Stairs 845
33_5903	N	18mm	“	“	Stairs 845
34_5908	S	18mm	“	“	Stairs 845
35_5901	SE	18mm	“	“	Stairs 890

INTERIOR TAKES LEVEL 8 / SOURCED PHOTOGRAPHS – UNKNOWN POSITION

36.801	N/a	N/a	N/a		Room 801
37.851.1	N/a	4.8mm		SM-Galaxy	Room 851
38.851.2	N/a	4.8mm		“	Room 851
39.852.1	N/a	4.8mm		“	Room 852
40.852.2	N/a	4.8mm		“	Room 852
41.854.1	N/a	4.8mm		“	Room 854
42.854.2	N/a	4.8mm		“	Room 854
43.856.1	N/a	4.8mm		“	Room 854
44.856.2	N/a	4.8mm		“	Room 856
45.857.1	N/a	4.8mm		“	Room 857
46.857.2	N/a	4.8mm		“	Room 857
47.889.1	N/a	4.8mm		“	Room 889
48.889.2	N/a	4.8mm		“	Room 889

Contact sheet Level 8, 2 of 2



Take 12_5898.tif



Take 13_5795.tif



Take 14_5800.tif



Take 15_5803.tif



Take 16_5799.tif



Take 17_5806.tif



Take 18_5809.tif



Take 19_5811.tif



Take 20_5813.tif



Take 21_5816.tif



Take 22_5822.tif



Take 23_5824.tif



Take 24_5827.tif



Take 25_5828.tif



Take 26_5830.tif



Take 27_5833.tif



Take 28_5916.tif



Take 29_5836.tif



Take 30_5818.tif



Take 31_5821.tif



Take 32_5905.tif



Take 33_5903.tif



Take 34_5908.tif



Take 35_5910.tif

Contact sheet Level 8, 1 of 2



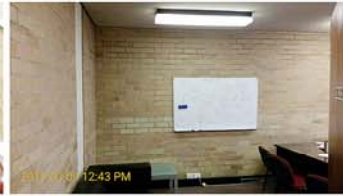
36.801.JPG



37.851.1.jpg



38.851.2.jpg



39.852.1.jpg



40.852.2.jpg



41.854.1.jpg



42.854.2.jpg



43.856.1.jpg



44.856.2.jpg



45.857.1.jpg



46.857.2.jpg



47.889.1.jpg



48.889.2.jpg



Take 01_5767.tif



Take 02_5769.tif



Take 03_5772.tif



Take 04_5775.tif



Take 05_5777.tif



Take 06_5781.tif



Take 07_5782.tif



Take 08_5784.tif



Take 09_5790.tif



Take 10_5792.tif



Take 11_5793.tif

NOTES

- 1
Internal layout rooms 830 & 840
have changed since this plan was drawn
- 2
Photographs sourced from other sources
are shown in blue and have unknown direction



THE UNIVERSITY OF
SYDNEY

project:
J03

ELECTRICAL ENGINEERING BUILDING FLOOR PLAN

title:

LEVEL 08

date: 02-05-2018

drawing no: A_J03-L08

scale: 1 : 250 @ A3

rev: -

drawn:	PRELIMINARY	FOR REVIEW
check:	FOR TENDER	FOR CONSTRUCTION



Archival photographic heritage recording Level 9 Building J03, Electrical Engineering, University of Sydney

Catalogue of Takes

<i>Take</i>	<i>Direction</i>	<i>Lens</i>	<i>Camera</i>	<i>Showing</i>
INTERIOR TAKES LEVEL 9 / ORIGINAL PHOTOGRAPHS				
01_5918	S	18mm	Nikon D850	Space 905 study
02_5924	SE	18mm	" "	Space 903A
03_5926	SW	18mm	" "	Space 903, Gents
04_5927	NE	18mm	" "	Space 900, lift lobby, lift doors, ceiling, wall, floor
05_5932	N	28mm	" "	Space 900, glass doors, lift lobby, lift doors, ceiling, wall, floor
06_5939	NW	28mm	" "	Roof space 999
07_28mm	SE	28mm	" "	Roof space 999

INTERIOR TAKES LEVEL 9 / SOURCED PHOTOGRAPHS – UNKNOWN SUBJECT

08.950.1	N/a	3.99mm	iPhone 7	Room 950
09.950.2	N/a	1.31mm	Ricoh Theta S	Room 950
10.951.1	N/a	N/a	N/a	Room 951
11.951.2	N/a	3.99mm	iPhone 7	Room 951
12.952.1	N/a	N/a	N/a	Room 952
13.952.2	N/a	N/a	N/a	Room 952

Contact sheet Level 9, 1 of 1



08.950.1.JPG



09.950.2.JPG



10.951.1.JPG



11.951.2.JPG



12.952.1.JPG



13.952.2.JPG



Take 01_5918.tif



Take 02_5924.tif



Take 03_5926.tif



Take 04_5927.tif



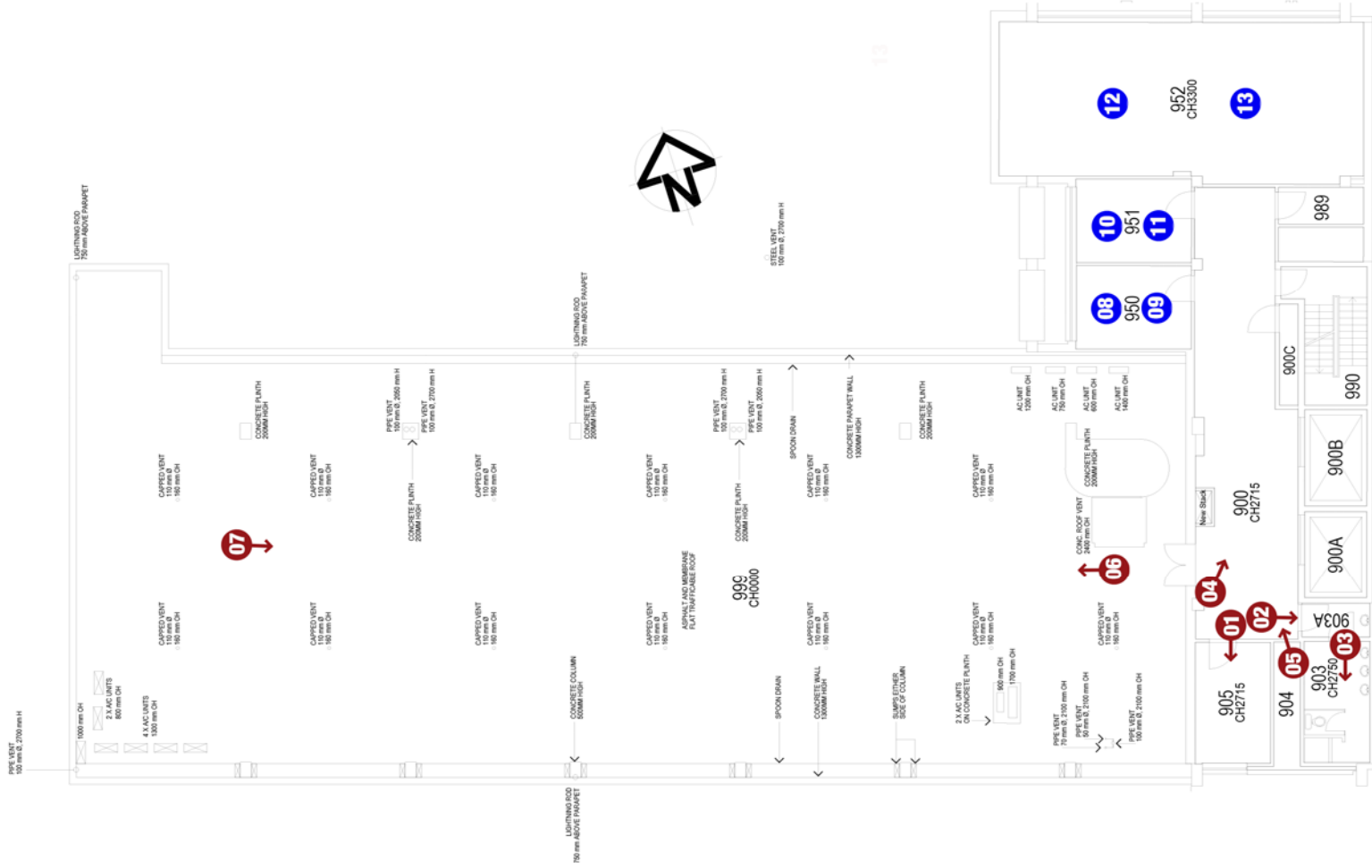
Take 05_5932.tif



Take 06_5939.tif



Take 07_5937.tif



NOTE Some photographs, not accessible at time of recording, had to be sourced later and are shown here in blue. Their direction is not known.

Archival photographic heritage recording Level 10, Building J03, Electrical Engineering, University of Sydney

Catalogue of Takes

<i>Take</i>	<i>Direction</i>	<i>Lens</i>	<i>Camera</i>	<i>Showing</i>
INTERIOR TAKES LEVEL 10 / ORIGINAL PHOTOGRAPHS				
01_5952	S	28mm	Nikon D850	Lift lobby & foyer, lift doors, ceiling, wall, floor, double doors
02_5953	S	18mm	" "	1002 Utilities room
03_5948	NE	28mm	" "	Lift lobby & foyer, lift doors, ceiling, wall, floor, double doors
04_5956	N	18mm	" "	Space 1001
05_5958	SE	18mm	" "	Stairs 1003
06_5962	SW	18mm	" "	Stairs 1003 lower landing
07_5963	N	18mm	" "	Stairs 1003 upper landing
08_5966	W	18mm	" "	Stairs 1003 top landing

Contact sheet Level 10, 1 of 1



Take 01_5952.tif



Take 02_5953.tif



Take 03_5948.tif



Take 4_5956.tif



Take 05_5958.tif



Take 06_5962.tif



Take 07_5963.tif



Take 08_5966.tif

200mm

300mm

