

LEGEND:

- Extent of Works
- EX [22.200] Existing Level (EX) To be retained
- RL [22.300] New Finished Surface Level
- TOW [22.300] Top of Wall (TOW)
- TE [22.300] Top of Edging Finished Level
- 1:21 Fall (ex) Existing Fall (ex) To be retained
- 1:21 Fall Proposed Gradient / Fall
- UP Step Up Surface (Stair)
- Flush Surface

NOTE:

All proposed levels are to be marked up by Contractor and approved by Landscape Architect prior to construction.

All existing levels are to be reviewed onsite by Contractor prior to construction.

All civil stormwater pits, grates & conduits refer Civil Engineer's documentation.

All service pits, grates & conduits refer Service Engineer's documentation.

© COPYRIGHT COX ARCHITECTURE PTY LTD

ANY FORM OF REPRODUCTION OF THIS DRAWING IN FULL OR IN PART WITHOUT THE WRITTEN PERMISSION OF COX ARCHITECTURE PTY LTD CONSTITUTES AN INFRINGEMENT OF COPYRIGHT

Rev	Description	By	Date
A	ISSUED FOR 70% DETAILED DESIGN	SK	25/10/2018
B	ISSUED FOR 70% DETAILED DESIGN	SK	31/10/2018
C	ISSUED FOR 70% DETAILED DESIGN	DH	08/11/2018
D	ISSUED FOR 70% DETAILED DESIGN	DH	03/12/2018

Landscape Architect

109 Grote Street
Adelaide SA 5000, Australia
T +61 8 8223 7533
http://www.tcl.net.au/

T.C.L.
TAYLOR.CULLITY.LETHLEAN

Client

LAING O'ROURKE

Principal

THE UNIVERSITY OF SYDNEY

Consultants:

PROJECT MANAGER

Laing O'Rourke
Level 4, Innovation Place, 100 Arthur Street, North Sydney NSW 2060
T +61 2 9953 0300 www.laingorourke.com
STRUCTURAL, CIVIL & FACADE ENGINEERS

Bonaccl Group
Level 6, 27 York Street Sydney NSW 2000
T +61 2 8247 8400 www.bonacclgroup.com
MECHANICAL ENGINEERS

BSA | BUILD | HVAC
Level 1, 3 Thomas Holt Drive, Macquarie Park NSW 2113
T +61 2 9763 6200 www.bsa.com
ELECTRICAL AND COMMUNICATIONS ENGINEERING

Stowe Australia Pty Ltd
PO Box 6265, Silverwater NSW 2128
T +61 2 9849 2111 www.stoweaustralia.com.au
HYDRAULIC ENGINEERS

Central Plumbing Pty Ltd
Suite W3B5, Level 3, 75-85 O'Riordan St Alexandria NSW 2015
T +61 2 9659 2722 www.centralpg.com.au
HYDRAULIC DESIGN

Argent Consulting
Suite W3B5, Level 3, 75-85 O'Riordan St Alexandria NSW 2015
T +61 2 9659 2722 www.argentconsulting.com
FIRE ENGINEERS

Triple M Fire Pty Ltd
Level 1, 8 Parkview Drive Sydney Olympic Park, Homebush Bay NSW 2127
T +61 2 9763 6200 www.triple-m.com.au
BCA CONSULTANTS

Steve Watson & Partners
Level 17, 458 Kent Street, Sydney NSW 2000
T +61 2 9283 6555 www.swppartners.com.au
ACCESS CONSULTANTS

Code Performance
Suite 10, 185 Military Road, Neutral Bay NSW 2089
T +61 2 9958 9738 www.codeperformance.com.au
LANDSCAPE ARCHITECTS

TCL Design
Taylor Cullity Lethlean 109 Grote St Adelaide SA 5000
T +61 8 8223 7533 http://www.tcl.net.au/
TRAFFIC ENGINEERS

GTA Consultants
Level 6, 15 Help Street, Chatswood NSW 2067
T +61 2 8445 1900 www.gta.com.au/home
RETICULATED GAS SYSTEMS ENGINEERS

Hoslab Pty Limited
Unit 31 35 Highbrookham, Gladstone NSW 2111
T +61 2 9816 3555 www.hoslab.com.au
LABORATORY PLANNERS

Jeff Freeman Associates
PO Box 463 Bundanoon NSW 2578
T +61 4 1741 0791
DRAINAGE DESIGN

Lucid Consulting Engineers
Level 2/12-16 Chippem St, Chippendale NSW 2008
T +61 4 3216 5660 www.lucidconsulting.com.au

Project

THE UNIVERSITY OF SYDNEY ETP STAGE 1

Electrical Engineering Building
University in Darlington, NSW 2008

Drawing Title

Grading Plan 01
Southern Courtyard

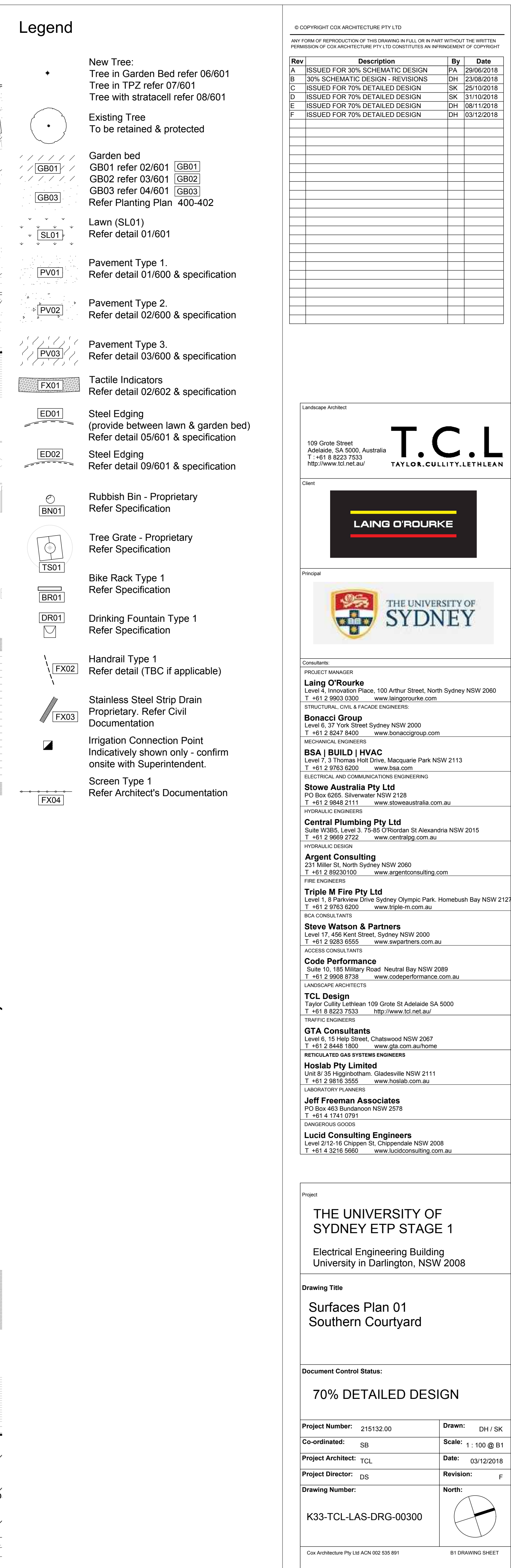
Document Control Status:

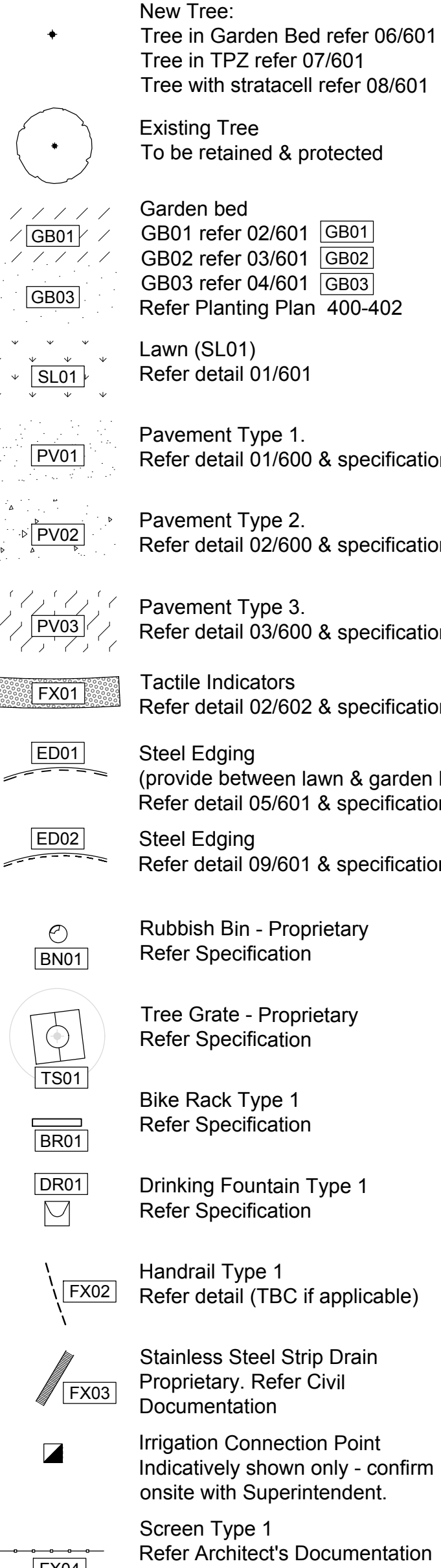
70% DETAILED DESIGN

Project Number:	215132.00	Drawn:	DH / SK
Co-ordinated:	SB	Scale:	1 : 100 @ B1
Project Architect:	TCL	Date:	03/12/2018
Project Director:	DS	Revision:	D
Drawing Number:	K33-TCL-LAS-DRG-00200	North:	

Cox Architecture Pty Ltd ACN 002 555 891

B1 DRAWING SHEET





Landscape Architect

T.C.O.L.
TAYLOR.CULLITY.LETHBRIDGE

Client



Principal

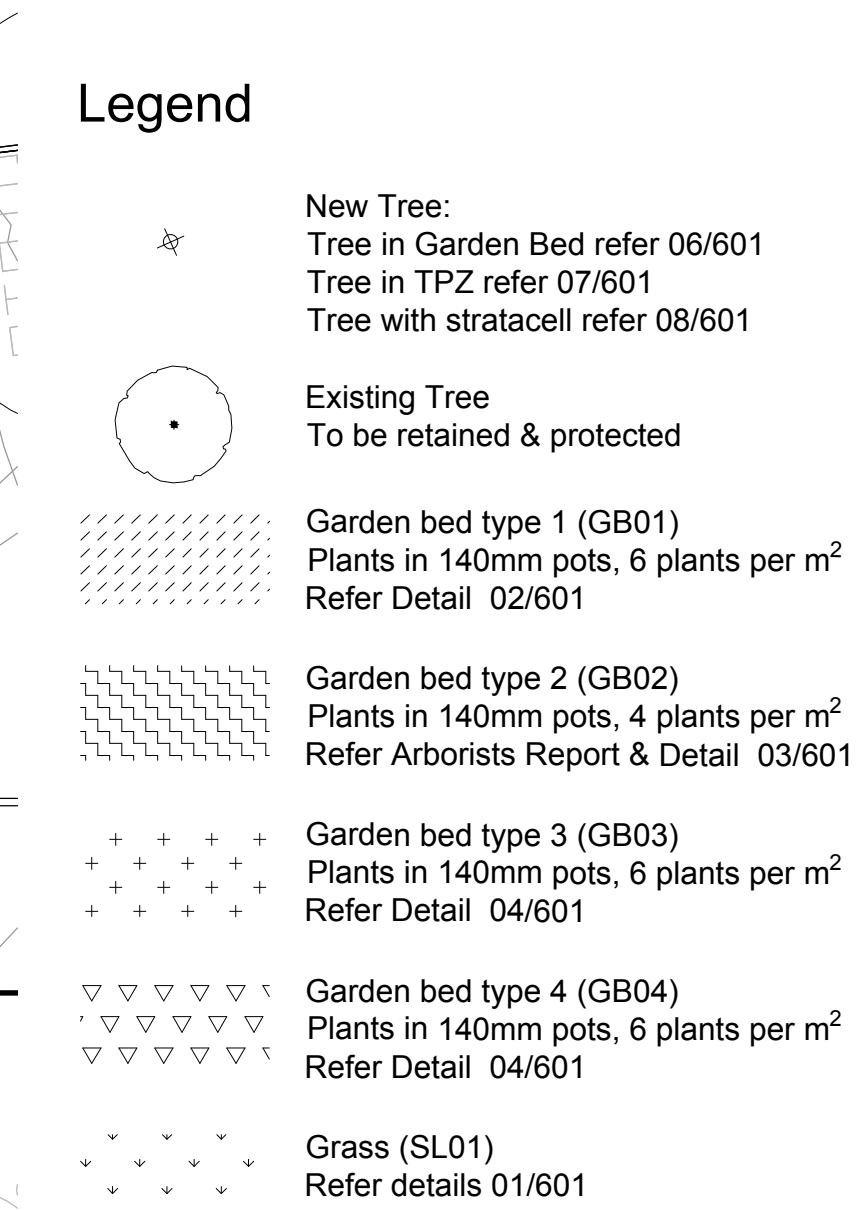


The University of
SYDNEY

Consultants:

- PROJECT MANAGER**
- Laing O'Rourke**
Innovation Place, 100 Arthur Street, North Sydney NSW 2060
T +61 2 9953 0300 www.laingorourke.com
- Bonacon Group**
Level 6, 37 York Street Sydney NSW 2000
T +61 2 8247 8400 www.bonacongroup.com
- MEDICAL ENGINEERING**
- BSA | BUILD | HVAC**
Level 7, 3 Thomas Holt Drive, Macquarie Park NSW 2113
T +61 2 9785 6200 www.bsacom.au
- ELECTRICAL AND COMMUNICATIONS ENGINEERING**
- Sewo Australia Pty Ltd**
PO Box 6265, Silverwater NSW 2128
T +61 2 8848 2111 www.sewoaustralia.com.au
- HYDRALIX ENGINEERS**
- Central Plumbing Pty Ltd**
Suite W88B, Level 3, 75-85 O'Rourke St Alexandria NSW 2015
T +61 2 8662 2722 www.centralplumbing.com.au
- Argent Consulting**
231 Miller St, North Sydney NSW 2060
T +61 2 89230100 www.argentconsulting.com
- FIRE ENGINEERS**
- Triple M Fire Pty Ltd**
Level 10, 8 Riverside Drive Sydney Olympic Park, Homebusch NSW 2060
T +61 2 9765 6200 www.triple-m.com.au
- RCA CONSULTANTS**
- Steve Watson & Partners**
Level 17, 456 Kent Street, Sydney NSW 2000
T +61 2 9285 6555 www.swpartners.com.au
- ACCESS CONSULTANTS**
- Code Performance**
Suite 10, 185 Military Road Neutral Bay NSW 2089
T +61 2 9558 8758 www.codeperformance.com.au
- LANDSCAPE ARCHITECTS**
- TCL Design**
Taylor Cullity Lethbridge 100 George St Adelaide SA 5000
T +61 8 8223 7533 http://www.tcl.net.au
- TRAFFIC ENGINEERS**
- GTA Consultants**
Level G, 15 Help Street, Chatswood NSW 2067
T +61 2 8448 1800 www.gta.com.au/home
- RETAIL/CASE GAS SYSTEMS ENGINEERS**
- Hoslab Pty Limited**
Unit B 35 Regencynorth, Gladstone NSW 2111
T +61 2 9815 3551 www.hoslab.com.au
- LABORATORY PLANNING**
- Jeff Freeman Associates**
PO BOX 463 Dundas Road NSW 2578
T +61 4 174 0791
- DANGEROUS GOODS**
- Lucid Consulting Engineers**
Level 2/10-18 Claydon St, Campbelltown NSW 2068
T +61 4 3215 5680 www.lucidconsultingengineers.com

Cox Architecture Pty Ltd ACN 002 535 891 B1 DRAWING SHEET



NOTE:

- REFER DRAWING 402 FOR PLANTING SCHEDULE
- PLANTING PLANS TO BE READ IN CONJUNCTION WITH ARBORISTS REPORT


[illegible]

Landscape Architect

109 Grote Street
Adelaide, SA 5000, Australia
T : +61 8 8223 7533
<http://www.tcl.net.au/>

T.C.L.
TAYLOR.CULLITY.LETHBRIDGE

Client

The logo for Laing O'Rourke is displayed on a dark grey rectangular background. The company name "LAING O'ROURKE" is written in a bold, white, sans-serif font. Above the text is a thick yellow horizontal line, and below the text is a thick red horizontal line.

Principal

 THE UNIVERSITY OF SYDNEY

Consultants:
PROJECT MANAGER
Laing O'Rourke
Level 4, Innovation Place, 100 Arthur Street, North Sydney NSW 2060
T +61 2 9903 0300 www.laingorourke.com
STRUCTURAL, CIVIL & FACADE ENGINEERS:

Bonacci Group
Level 6, 37 York Street Sydney NSW 2000
T +61 2 8247 8400 www.bonaccigroup.com

MECHANICAL ENGINEERS
BSA | BUILD | HVAC
Level 7, 3 Thomas Holt Drive, Macquarie Park NSW 2113
T +61 2 9763 6200 www.bsa.com

ELECTRICAL AND COMMUNICATIONS ENGINEERING
Stowe Australia Pty Ltd
PO Box 6265, Silverwater NSW 2128
T +61 2 9848 2111 www.stoweaustralia.com.au

HYDRAULIC ENGINEERS

Central Plumbing Pty Ltd
Suite W3B5, Level 3, 75-85 O'Riordan St Alexandria NSW 2015
T +61 2 9669 2722 www.centralpg.com.au

HYDRAULIC DESIGN

Argent Consulting
231 Miller St, North Sydney NSW 2060
T +61 2 89230100 www.argentconsulting.com

Triple M Fire Pty Ltd
Level 1, 8 Parkview Drive Sydney Olympic Park, Homebush Bay NSW 2
T +61 2 9763 6200 www.triple-m.com.au

Steve Watson & Partners
Level 17, 456 Kent Street, Sydney NSW 2000
T +61 2 9283 6555 www.swpartners.com.au

Code Performance
Suite 10, 185 Military Road Neutral Bay NSW 2089
T +61 2 9908 8738 www.codeperformance.com.au

TCL Design
Taylor Cullity Lethlean 109 Grote St Adelaide SA 5000
T +61 8 8223 7533 <http://www.tcl.net.au/>

GTA Consultants
Level 6, 15 Help Street, Chatswood NSW 2067
T +61 2 8448 1800 www.gta.com.au/home

Hoslab Pty Limited
Unit 8/ 35 Higginbotham, Gladesville NSW 2111
T +61 2 8816 3555 www.hoslab.com.au

Jeff Freeman Associates
PO Box 463 Bundanoon NSW 2578
T +61 4 1741 0791

Lucid Consulting Engineers
Level 2/12-16 Chippen St, Chippendale NSW 2008
T +61 4 3216 5660 www.lucidconsulting.com.au

Project

THE UNIVERSITY OF
SYDNEY ETP STAGE 1

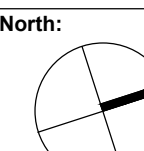
Electrical Engineering Building
University in Darlington, NSW 2008

Drawing Title

Planting Plan 01
Southern Courtyard

Document Control Status:

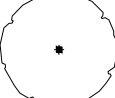
70% DETAILED DESIGN

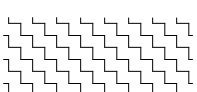
Project Number: 215132.00	Drawn: DH
Co-ordinated: SB	Scale: 1:100 @ B1
Project Architect: TCL	Date: 03/12/2016
Project Director: DS	Revision: []
Drawing Number: K33-TCL-LAS-DRG-00400	North: 
<p>Cam Architecture Pty Ltd ACN 002 535 891</p>	B1 DRAWING SHEET

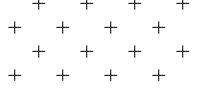



New Tree:
 Tree in Garden Bed refer 06/001
 Tree in TPZ refer 07/601
 Tree with stratacell refer 08/601


Existing Tree
 To be retained & protected


Garden bed type 1 (GB01)
 Plants in 140mm pots, 6 plants per m²
 Refer Detail 02/601


Garden bed type 2 (GB02)
 Plants in 140mm pots, 4 plants per m²
 Refer Arborists Report & Detail 03/601


Garden bed type 3 (GB03)
 Plants in 140mm pots, 6 plants per m²
 Refer Detail 04/601


Garden bed type 4 (GB04)
 Plants in 140mm pots, 6 plants per m²
 Refer Detail 04/601


Grass (SL01)
 Refer details 01/601

NOTE

- REFER DRAWING 402 FOR PLANTING SCHEDULE
- PLANTING PLANS TO BE READ IN CONJUNCTION WITH ARBORISTS REPORT

ANY FORM OF REPRODUCTION OF THIS DRAWING IN FULL OR IN PART WITHOUT THE WRITTEN PERMISSION OF COX ARCHITECTURE PTY LTD CONSTITUTES AN INFRINGEMENT OF COPYRIGHT

[illegible]

Landscape Architect

109 Grote Street
Adelaide, SA 5000, Australia
T: +61 8 8223 7533
<http://www.tcl.net.au/>

T.C.L.
TAYLOR.CULLITY.LETHBRIDGE

Client	
--------	--

LAING O'ROURKE



Consultants:	
--------------	--

Laing O'Rourke

Level 4, Innovation Place, 100 Arthur Street, North Sydney NSW 2060
T +61 2 9803 0300 www.laingorourke.com
STRUCTURAL, CIVIL & FACADE ENGINEERS:

Bonacci Group
Level 6, 37 York Street Sydney NSW 2000
T +61 2 8247 8400 www.bonaccigroup.com

BSA | BUILD | HVAC
Level 7, 3 Thomas Holt Drive, Macquarie Park NSW 2113
T +61 2 9763 6200 www.bsa.com

Stowe Australia Pty Ltd
PO Box 6265, Silverwater NSW 2128
T +61 2 9848 2111 www.stoweaustralia.com.au

HYDRAULIC ENGINEERS
Central Plumbing Pty Ltd
Suite W3B5, Level 3, 75-85 O'Riordan St Alexandria NSW 2015
T +61 2 9669 2722 www.centralpg.com.au

HYDRAULIC DESIGN
Argent Consulting
231 Miller St, North Sydney NSW 2060

T +61 2 89230100 www.argentconsulting.com
FIRE ENGINEERS

Triple M Fire Pty Ltd
Level 1, 8 Parkview Drive Sydney Olympic Park, Homebush Bay NSW 2127
T +61 2 9763 6200 www.triple-m.com.au

Steve Watson & Partners
Level 17, 456 Kent Street, Sydney NSW 2000
T +61 2 9283 6555 www.swpartners.com.au

ACCESS CONSULTANTS

Code Performance
Suite 10, 185 Military Road Neutral Bay NSW 2089
T +61 2 9908 8738 www.codeperformance.com.au

LANDSCAPE ARCHITECTS
TCL Design
Taylor Cullity Lethlean 109 Grote St Adelaide SA 5000
T +61 8 8223 7533 <http://www.tcl.net.au/>

TRAFFIC ENGINEERS
CTA Consultants

GTA Consultants
Level 6, 15 Help Street, Chatswood NSW 2067
T +61 2 8448 1800 www.gta.com.au/home

Hoslab Pty Limited
Unit 8/ 35 Higginbotham, Gladesville NSW 2111
T +61 2 9816 3555 www.hoslab.com.au

LABORATORY PLANNERS
Jeff Freeman Associates
PO Box 463 Bundanoon NSW 2578
T +61 4 1741 0791

Lucid Consulting Engineers
Level 2/12-16 Chippen St, Chippendale NSW 2008
T +61 4 3216 5660 www.lucidconsulting.com.au

Project

THE UNIVERSITY OF
SYDNEY ETP STAGE 1


Electrical Engineering Building
University in Darlington, NSW 2008

Drawing Title

Planting Plan 02
Northern Courtyard

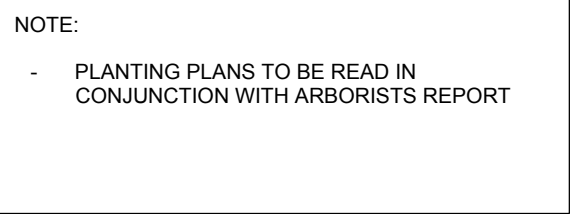
Document Control Status:

70% DETAILED DESIGN

Project Number: 215132.00	Drawn: DH
Co-ordinated: SB	Scale: 1 : 100 @ B
Project Architect: TCL	Date: 03/12/2018
Project Director: DS	Revision: []
Drawing Number: K33-TCL-LAS-DRG-00401	North: 

Cox Architecture Pty Ltd ACN 002 535 891

B1 DRAWING SHEET



Project <h1>THE UNIVERSITY OF SYDNEY ETP STAGE 1</h1> <p>Electrical Engineering Building University in Darlingtown, NSW 2008</p>	
Drawing Title <h2>Plantation Plan 03 Eastern Courtyard</h2>	
Document Control Status: <h3>70% DETAILED DESIGN</h3>	
Project Number: 215132.00	Drawn: DH
Co-ordinated: SB	Scale: 1: 100 @ B1
Project Architect: TCL	Date: 03/12/2018
Project Director: DS	Revision: E
Drawing Number: <h2>K33-TCL-LAS-DRG-00402</h2>	North: 
Cox Architecture Pty Ltd ACN 002 535 891	
B1 DRAWING SHEET	



Amended levels to reflect
the revised Grading Plans



Scale 1:25

B1 DRAWING SHEET



02 | NORTHERN COURTYARD

SECTION

03 | NORTHERN COURTYARD

04 | NORTHERN COURTYARD - BIO-RETENTION SECTION

05 | NORTHERN COURTYARD - RAISED LAWNS (SL01)

06 | NORTHERN COURTYARD - GB01

8: DRAWING SHEET

