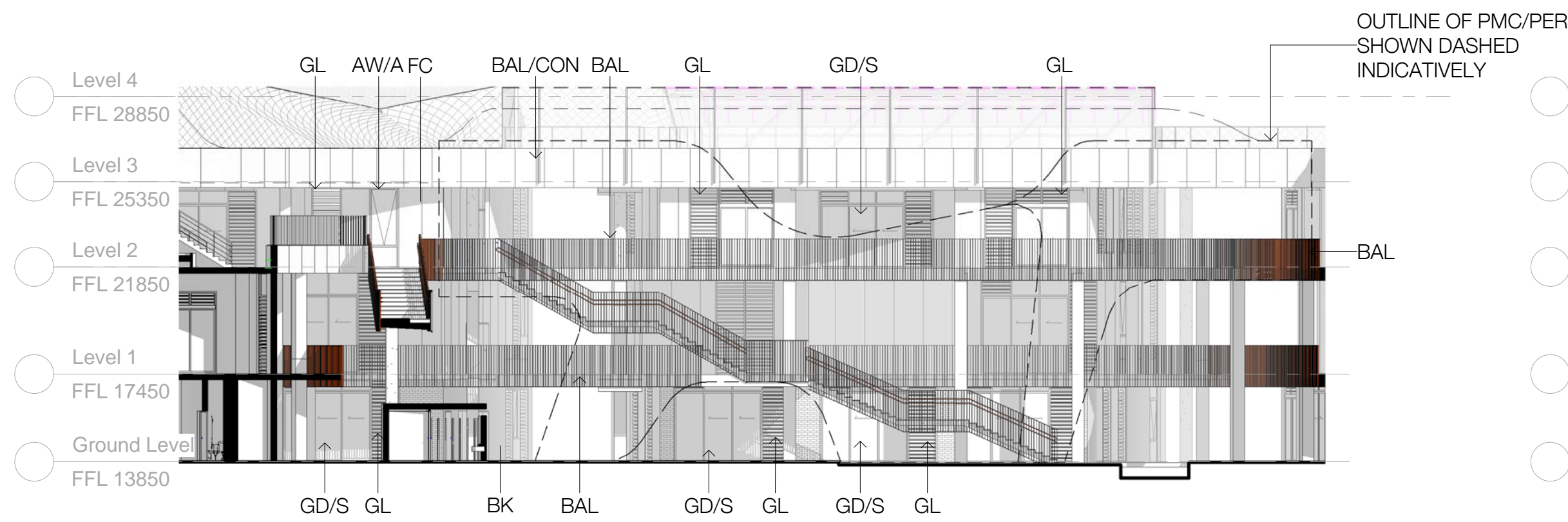
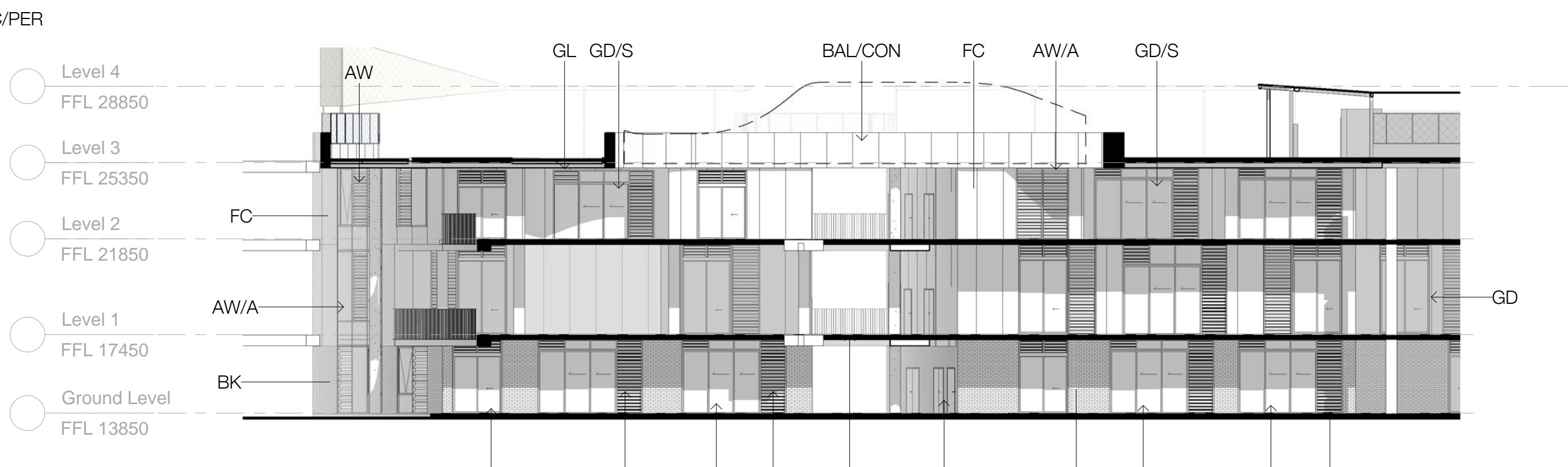


1
3002
DETAILED_Elevation 1
1 : 200



2
3002
DETAILED_Elevation 2
1 : 200



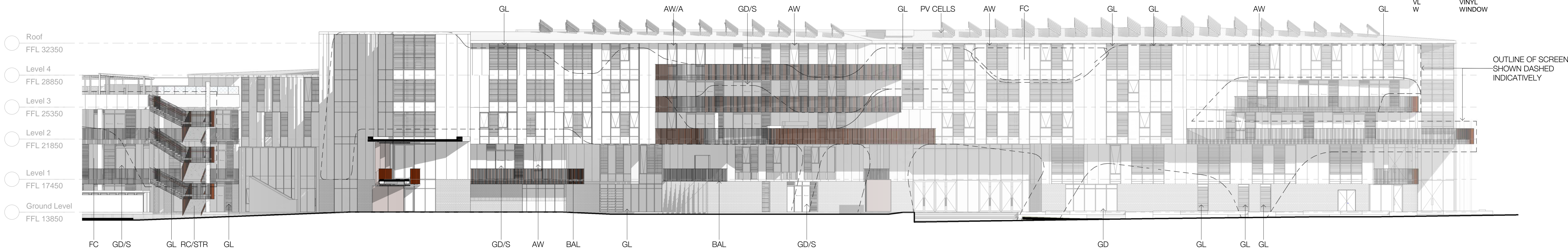
3
3002
DETAILED_Elevation 3
1 : 200



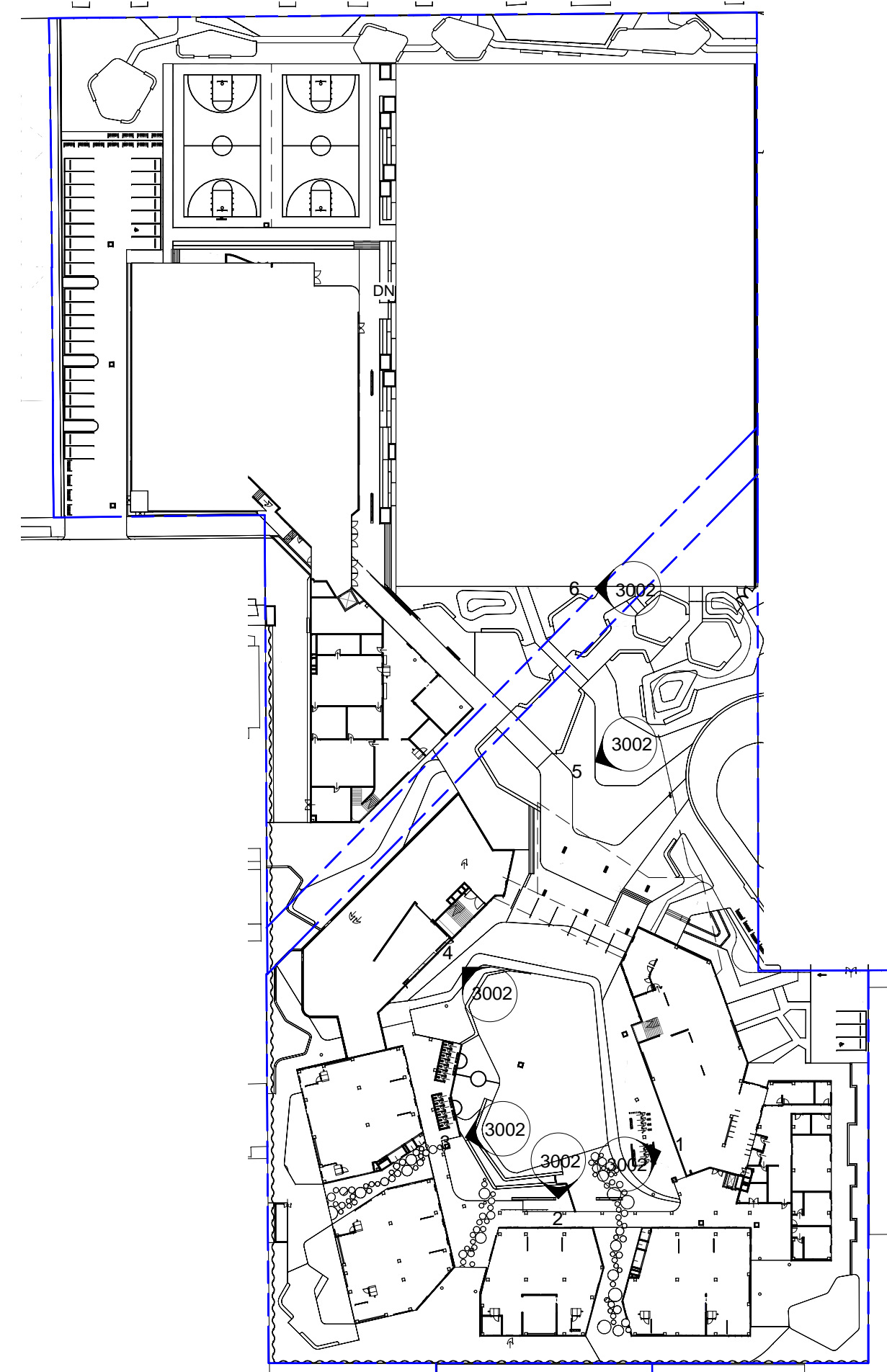
4
3002
DETAILED_Elevation 4
1 : 200



5
3002
DETAILED_Elevation 5
1 : 200



6
3002
DETAILED_Elevation 6
1 : 200



- AB ALUMINIUM BLADE
- ACP ACoustic CEILING PANELS
- AL ALUMINIUM
- AW ALUMINIUM WINDOW
- AW/A ALUMINIUM WINDOW AWNING
- BAL BALUSTRADE
- BK/F BRICKWORK- FACE
- C CURVED
- CA CARPET
- D DOOR
- E EXISTING
- EDB ELECTRICAL DISTRIBUTION BOARD
- F FIXED
- FC FIBRE CEMENT
- FCL FINISHED CEILING LEVEL
- FD FIRE DOOR
- FFL FINISHED FLOOR LEVEL
- FG FIXED GLASS
- FH FIRE HYDRANT
- FHR FIRE HOSE REEL
- FIP FIRE INDICATOR PANEL
- FLY FLYSCREEN
- FR FIRE RATED
- FRL FIRE RESISTANCE LEVEL
- G GLASS
- G/OB GLASS/OBSCURE
- GAL GALVANISED
- GD GLAZED DOOR
- GD/S GLAZED DOOR SLIDING
- GD/T GLAZED DOOR TILTING
- GR GAS FIREPLACE
- GL GLAZED LOUVRES
- MLF METAL LOUVRE - FIXED
- MRS METAL ROOF SHEETING
- MSF METAL SCREEN- FIXED
- (N) NEW
- P PAINT/ PAINTED
- PAV/BK PAVERS/BRICK
- PAVC PAVERS/ CONCRETE
- PBD PLASTERBOARD
- PBD/FR PBD- FIRE RATED
- PBD/MR PBD- MOISTURE RESISTANT
- PER PERFORATED
- PF PRE-FINISHED
- PFC PARALLEL FLANGE CHANNEL
- PLY PLYWOOD
- PMC PREFINISHED METAL CLADDING
- RC REINFORCED CONCRETE
- RC/NS RC- NON-SLIP
- RC/WF RC- WOOD FLOAT FINISH
- RC/BR RC- BROOM FINISH
- RC/OF RC- OFF FORM
- RC/STR RC- STEEL TROWEL FINISH
- RL REDUCED LEVEL
- RS ROLLER SHUTTER
- /SER SERVICES
- SKL SKYLIGHT
- SS STAINLESS STEEL
- T TIMBER
- T/V TIMBER- VENEER
- TB TIMBER BATTENS
- TD TIMBER DOOR
- TL TILE FINISH
- TL/F TILE- FLOOR
- TME TILE- WALL
- TO TO MATCH EXISTING
- VL VINYL
- W WINDOW

CLIENT	DEPARTMENT OF EDUCATION
T + 61 2 9561 1927	
F + 61 2 9561 8077	
LANDSCAPE CONSULTANT	
CONTEXT	
T + 61 2 9244 8900	
STRUCTURAL & CIVIL CONSULTANT	
WOOLACOTTS	
T + 61 2 9241 9900	
GEOTECHNICAL CONSULTANT	
J+K GROUP	
T + 61 2 9888 5000	
BUILDING SERVICES CONSULTANTS	
UMOW LAI	
T + 61 2 9431 9431	
ESD CONSULTANT	
UMOW LAI	
T + 61 2 9431 9431	
NCC/BCA & ACCESS CONSULTANT	
DESIGN CONFIDENCE	
T + 612 8399 3707	
SITE INVESTIGATION & ENVIRONMENTAL ASSESSMENT	
COFFEY	
T + 612 9406 1000	
TRAFFIC CONSULTANT	
ARUP	
T + 612 9320 9320	
BIODIVERSITY CONSULTANT	
UBM ECOLOGICAL	
T + 612 4567 7979	
ARBORIST	
REDGUM HORTICULTURAL	
T + 612 8624 8314	
EUROPEAN AND ABORIGINAL ARCHAEOLOGY	
EXTENT	
T + 612 9555 4000	
ACOUSTIC CONSULTANT	
WILKINSON MURRAY	
T + 612 9437 4611	
WASTE MANAGEMENT CONSULTANT	
FORESIGHT ENVIRONMENTAL	
T + 612 8803 7270	
WIND & REFLECTIVITY CONSULTANT	
WINDTECH	
T + 612 9503 0300	
3D RENDERER	
NARRATIVE	
T + 61 439 295 296	
LAND SURVEYOR	
LTS LOCKLEY	
T + 1300 587 585	
QUANTITY SURVEYOR	
TURNER & TOWNSEND	
T + 612 9245 0000	
TOWN PLANNER & SOCIAL IMPACT CONSULTANT	
URBIS	
T + 612 8233 9900	

NSW Nominated Architects: Robert Denton Reg. No. 5782, Alex Kibble Reg. No. 6015			
Do not scale drawings. Verify all dimensions on site. Notify architect of all discrepancies			
Rev	Date	Description	Checked Auth.
P1	08.12.17	Issue For SSDA	AH AK

NOT FOR CONSTRUCTION

Project
ALEXANDRIA PARK
COMMUNITY SCHOOL
Drawing Title
DETAILED ELEVATIONS 1

Proj. Dir	Proj. Arch	Drawn	
AK	AH	DWS	1
Job No.	Sheet	Scale	
161044	B1	As indicated	
Drawing No.		Revision	
AR.DA. 3002		P1	
Tanner Kibble Denton Architects Pty Ltd			
PO Box 660 Darlinghurst NSW 1300 Australia			
Level 1, 19 Foster Street, Surry Hills NSW 2010 Australia			
T +61 2 9281 4369			
F +61 2 9281 4337			
www.tkda.com.au			