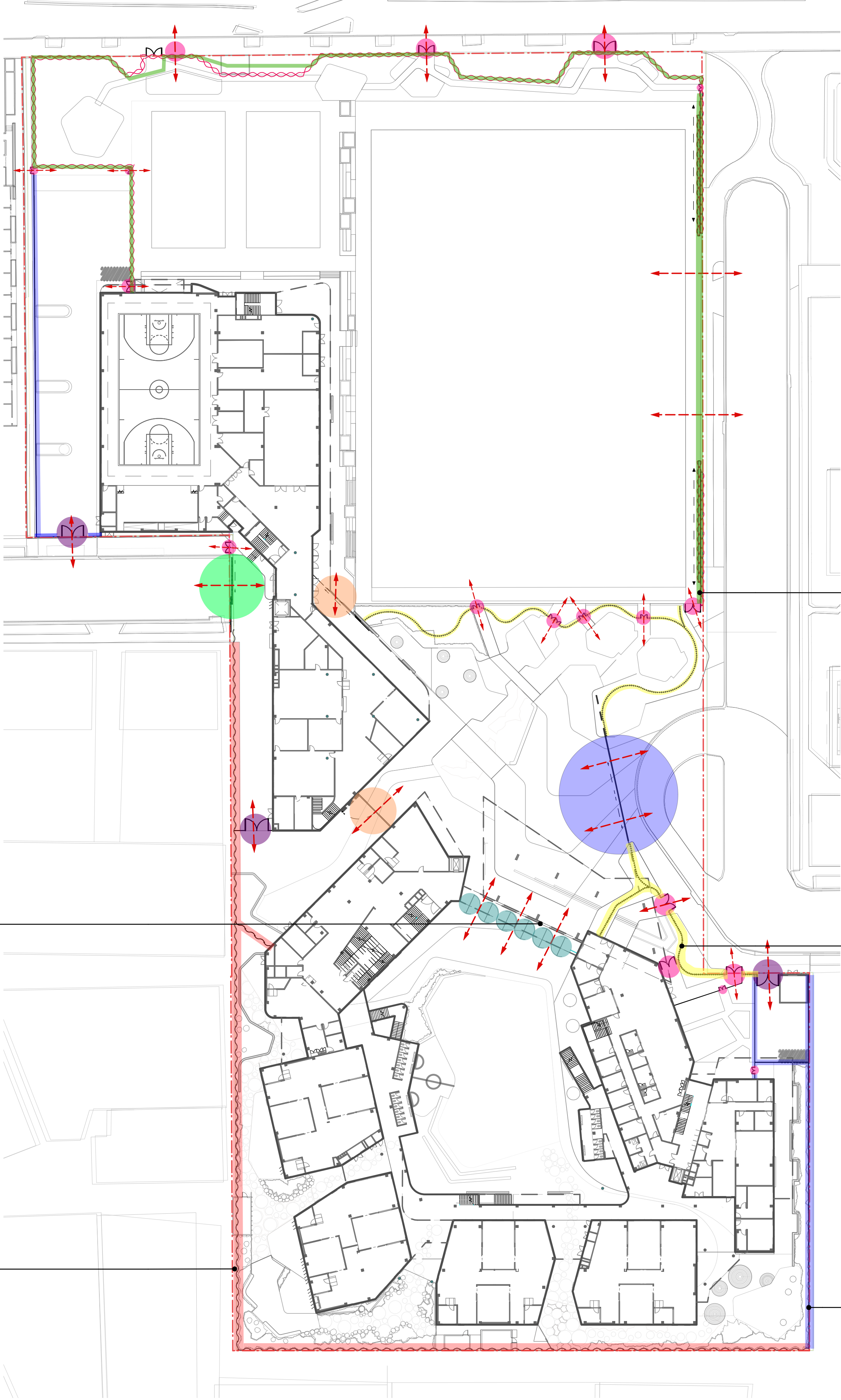


LEGEND

- PALISADE FENCING - LEDA 'PREMIER' [FP27TC]
- EXISTING CORTEN STEEL FENCE
- SCULPTURAL FENCE - LEDA 'BASTILLE' [FB32R]
- COLOURED SPORTING FENCE
- MAIN ENTRY SLIDE GATE
- SINGLE/DOUBLE GATE
- SWIVEL GATE
- REAR ENTRY SLIDE GATE
- VEHICULAR GATE
- SECONDARY SLIDING GATE



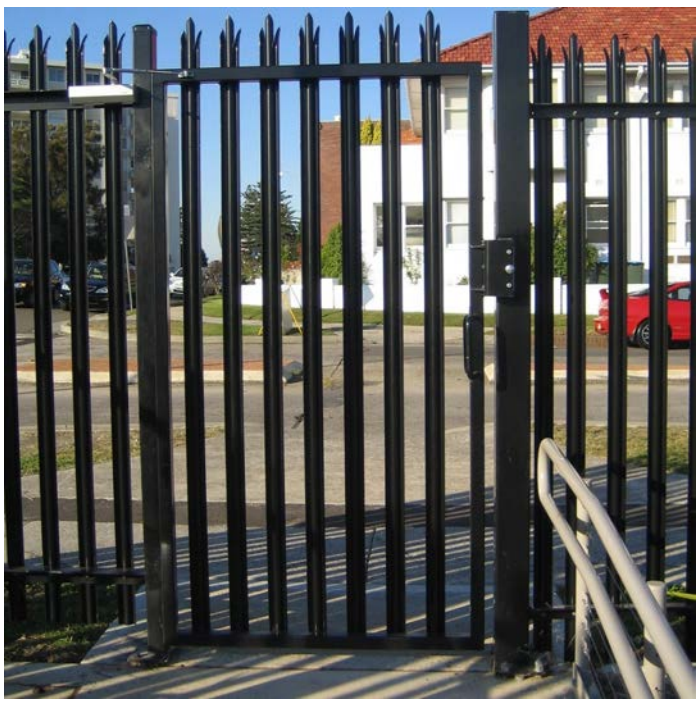
*colour not indicative of final design



DYNAMIC COLOURED SPORTS FENCE ALLOWING OPENING DURING PUBLIC HOURS



SCULPTURAL FENCE TO BLEND WITH PLANTING
LEDA - 'BASTILLE' FENCE [FB32R] (STANDARD SECURITY FENCE)



PALISADE SECURITY FENCING
LEDA - 'PREMIER' FENCE [FR27TC]



SWIVEL GATES



EXISTING CORTEN STEEL FENCE WITH PUBLIC ARTWORK

LEGEND

- SCHOOL USE
- COMMUNITY AREA
- CARPARK / SERVICE AREA
- BUILDING EDGE AS BARRIER
- MAIN ENTRY SLIDE GATE
- SINGLE/DOUBLE/SLIDING GATE
- SWIVEL GATE
- REAR ENTRY SLIDE GATE
- VEHICULAR GATE
- SECONDARY SLIDING GATE

SWIPE CARD ACCESS

SWIPE CARD ACCESS

GATES OPEN BEFORE & AFTER SCHOOL HOURS TO SUIT THE OPERATIONAL NEEDS OF THE SCHOOL

SECURE ENTRY

SWIPE CARD ACCESS

ISSUE	DESCRIPTION	DATE	CREATED	DATE	CHECKED	PROJECT STAGE	SHEET SIZE
1.	DRAFT ISSUE	8/31/17	JK	10.05.17	HD	SD	A1
2.	DRAFT PRELIMINARY ISSUE FOR SSDA	9/14/17					
3.	PRELIMINARY ISSUE FOR SSDA	9/15/17					
4.	PRELIMINARY ISSUE FOR SSDA	30/11/17					
			PROJECT NUMBER			DRAWING NUMBER	ISSUE
			16585			L-SD-261-00	P4

LEGEND

- PUBLIC ACCESS
- CARPARK / SERVICE AREA
- COMMUNITY AREA
- BUILDING EDGE AS BARRIER
- MAIN ENTRY SLIDE GATE
- SINGLE/DOUBLE GATE
- SWIVEL GATE
- REAR ENTRY SLIDE GATE
- VEHICULAR GATE
- SECONDARY SLIDING GATE

COMMUNITY ACCESS TO CARPARK OUTSIDE OF SCHOOL HOURS INCLUDING WEEKENDS BY ARRANGEMENT WITH THE SCHOOL.

COMMUNITY ACCESS OUTSIDE OF SCHOOL HOURS INCLUDING WEEKENDS BY ARRANGEMENT WITH THE SCHOOL.

ENTRY FORECOURT

COMMUNITY ACCESS TO ENTRY FORECOURT OUTSIDE OF SCHOOL HOURS INCLUDING WEEKENDS BY ARRANGEMENT WITH THE SCHOOL.