



appendix 4

[Frequently Asked Questions](#)

Frequently asked questions

Where is the design for the new school up to?

A concept design for the new Alexandria Park Community School (APCS) has been developed, and was endorsed by the Project Reference Group (PRG) on 4 May 2017.

The schematic design for the school is progressing well. The design considers feedback collected from workshops and information booths held to date and supports education and community needs. Continued engagement with staff, students, parents and the community will help inform the design for the new school.

As the new school is a State Significant Development (SSD), a submission to the Department of Planning to obtain the Secretary's Environmental Assessment Requirements (SEARs) was required. A response has since been received, and work has commenced to produce an Environmental Impact Assessment (EIA).

Will the school and broader community have a voice during the design of the new school?

We are committed to quality engagement. Engagement with the school and local community is underway through information booths, workshops and surveys. Information received through these forums will be considered to help inform the design for the new school.

A PRG was established to commence the planning and design process. The PRG is a non-technical stakeholder group consisting of the school principal, staff and students, directors of Public Schools NSW, the parents and citizens (P&C) association, Aboriginal Education Consultative Group (AECG) and the department's Inner City Strategy representatives. The PRG meets on a regular basis to consider the feedback received and to ensure the design is progressing.

When is the Alexandria Park Community School redevelopment due for completion?

The redevelopment is on track and is anticipated to be ready for staff and students to occupy in 2022.

Why is another pop-up school being constructed to house APCS K-6 students?

Due to increasing K-6 student numbers and demand on school facilities, it was decided to build a second pop-up school adjacent to the existing pop-up school - 'The Buckland'.

The decision to accommodate all K-6 classes in the pop-up location means all classes can be taught in the one location, with students exposed to learning experiences in a brand new, future-focused, purpose-built learning environment, while redevelopment of the K-12 APCS occurs.

Construction of the second pop-up school has commenced. Classes will begin in the second pop-up in 2018.

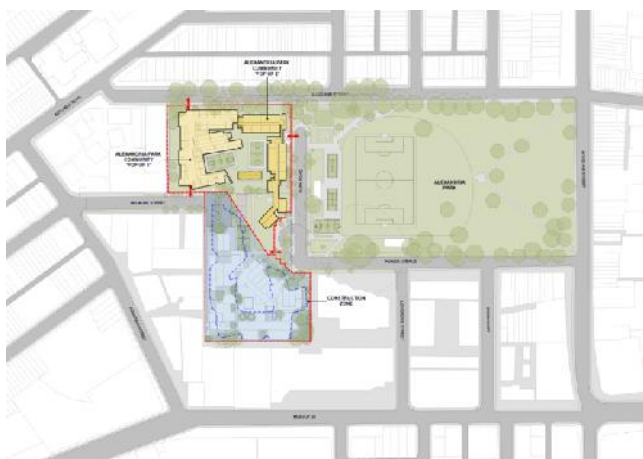


Image: APCS redevelopment – site plan during the construction of the main works locating pop-up 1, pop-up 2 and the construction zone. The extent of the construction zone is subject to change as the design progresses and consultation continues with a range of stakeholders including the school community, local community, technical stakeholders and the City of Sydney Council. Image Credit: TKD Architects.

What will the new pop-up school look like?

To minimise the footprint of the new pop-up school, and maximise the available play space for students, the new pop-up school will be up to three-storeys high with all new, insulated, carpeted rooms equipped with air conditioning.

What safety measures and traffic management will be in place during construction?

As always, student, staff and visitor safety is of paramount importance. Extensive measures will be in place to ensure the works are undertaken with the safety of all a prime concern. This will include a traffic management plan.

As construction work will be conducted during standard buildings hours, and in accordance with the standards of the NSW workplace health and safety regulator - SafeWork NSW (previously known as WorkCover NSW), the school will continue to work with the building project team and the civil contractor to minimise disruption to students, staff, community and residents and to maximise safety.

Why is Cleveland Street Intensive English High School moving into the 'vacated' K-6 APCS site on Park Road?

Cleveland Street Intensive English High School (CSIEHS) is moving into the 'vacated' K-6 APCS site on Park Road while their new school on Mitchell Road is constructed. This will allow for the commencement of early works for the new Inner Sydney High School.

Further information on this project can be found on the [CSIEHS](#) project page.



Image: 2018 site plan locating pop-up 1, pop-up 2 and CSIEHS. Image Credit: TKD Architects.

How long will CSIEHS students be located at the previous K-6 Park Road Campus?

Students will be located at the Park Road Campus until late 2018 when their new Mitchell Road school is expected to be completed. This will not impact the APCS redevelopment program.

Will there be any interaction between the students of CSIEHS and APCS at the Park Road site?

APCS K-12 and CSIEHS will operate as two separate and individual schools on the Park Road site.

Although learning spaces will be separated, some facilities including the basketball courts, the gymnasium/hall and 'The Denzil' will be the subject of agreed and negotiated shared access to support the learning needs of all students.

When will we get more information?

Representatives on the PRG will be kept up to date with project progress, and will be responsible for advising the school and the broader community.

In conjunction with the PRG, there are information booths planned. The information booth schedule can be located on this website on [the community consultation page](#). The project team will report monthly on the APCS development's progress, with these updates issued to the school community via the school newsletter, as well as being published on this website.



appendix 5

[Letterbox drop notice](#)

Alexandria Park Community School Redevelopment

Neighbours Letterbox Drop - May 2017

Project overview

The NSW Department of Education is redeveloping Alexandria Park Community School Park Road site to cater for up to approximately 1,000 primary school students and up to approximately 1,200 secondary school students. The redevelopment will deliver significant upgrades, improving the facilities and ensuring the school can cater for the increasing student enrolments from Kindergarten to Year 12.

The redevelopment will:

- include flexible, future focussed learning spaces which will enhance innovative and engaging learning and teaching practices;
- maximise outdoor green space; and
- consolidate the previous dual campuses onto one site; the previously called Park Road Campus of Alexandria Park Community School.

Progress summary

Students and staff vacated the Mitchell Road Campus in early March and are now occupying a new temporary 'pop-up' school on the Park Road site (known as The Buckland).

During the April school holidays, one additional specialist demountable building for food technology was installed as part of The Buckland. Landscaping works and the new basketball court have been completed.

Ongoing tasks

- The design for the redevelopment is progressing into the schematic design stage. The head design consultant is TDK Architects.
- The Secretary's Environmental Assessment Requirements (SEARs) was issued by the Department of Planning on 27 April 2017 and the project team has commenced work to action all requirements.
- Further design reviews continue with key technical and educational stakeholders.
- Consultation is continuing with the City of Sydney Council in relation to the potential for shared community facilities as part of the redevelopment.

Next steps and key events

- TKD Architects will continue to progress the schematic design.
- Graphic murals will be installed at The Buckland buildings in the coming months. The imagery for the murals has been selected by the school students, staff and community and incorporate Australian flora

and fauna to represent the four school houses (Waratah, Wattle, Blue Gum and Banksia) and make reference to the recently demolished mural that existed along the public pathway between Belmont and Buckland Streets.



One of the graphic murals that will be installed on The Buckland buildings. Image credit: Leading Hand Design and Danilo Brandao at Boccalatte.

- Consultation will be ongoing with the Department of Planning and Environment, the City of Sydney Council and other authorities in preparing the State Significant Development Application.
- The PRG will continue to review key project issues at fortnightly meetings.

Working with our neighbours

The project team is committed to continue working with our neighbours to investigate and reduce any impacts caused by the redevelopment process so please contact us should you have any issues.

We thank for your understanding and patience while we undertake these important works for the school.

Community consultation

The project team has continued to provide opportunities to keep the local community up to date with information booths at local events.

To find out more about the project, you are welcome to come and speak with the project team at the following upcoming events:

Carriageworks Farmers Markets

8:30am – 10:30am Saturday 20 May 2017
245 Wilson St, Eveleigh

Surry Hills Markets

8:00am – 10:00am Saturday 3 June 2017
Corner Crown and Collins Streets, Surry Hills,

Updates will continue to be published on the project website: <http://www.schools.nsw.edu.au/apcs>

If you have any questions or concerns please contact the project team at info@apcsredevelopment.com.au

Tuesday, 1 August 2017

Resident Notification - Alexandria Park Community School

Planning update

We are pleased to report that planning for the redevelopment of Alexandria Park Community School (APCS) is progressing well with the scheduled completion of the construction on track for 2022.

As you know, classes from Mitchell Road have been relocated to 'The Buckland' on Buckland Street with all of APCS K-12 students accommodated together on one site for the first time in the school's history.

Construction will soon commence at APCS on a second pop-up facility for K-6 students, adjacent to 'The Buckland' on the playing fields of the site. Classes will commence in this pop-up from Term 1, 2018, whilst the planning period continues for the redevelopment of the K-12 APCS.

To minimise the footprint of the new pop-up school, the facility will include 3 storey buildings.

A new interim arrangement for CSIEHS

In addition to the redevelopment of APCS, there is ongoing work on Mitchell Road Alexandria for the new Cleveland Street Intensive English High School (CSIEHS).

Since initial planning, the aim has been to move the CSIEHS classes directly from their current site in Surry Hills to the Mitchell Road site. While early works are now underway at Mitchell Road, these works were delayed due to additional work and reviews throughout the planning stage.

This additional work has impacted the opening date, and the Mitchell Road site will not be ready for operation for Term 1, 2018 as originally planned. The new target completion date is in the third quarter of 2018.

The Department of Education's redevelopment of the CSIEHS current site in Surry Hills is part of the implementation of the Government's School Assets Strategic Plan by School Infrastructure NSW. The site must be vacated at the end of 2017, which creates a gap before the new site on Mitchell Road is completed ready for CSIEHS occupation.

An interim plan has been developed to temporarily accommodate CSIEHS classes for most of 2018 on the Park Road site of APCS. The first day of their classes at Park Road will be Day 1, Term 1 2018.

The CSIEHS classes will be accommodated in the existing K-6 permanent buildings inside the school grounds.

The co-location of schools together on one campus may present some challenges particularly as we transition to this temporary arrangement, however the department and the leadership of each school, are committed to a positive and effective transition to the new arrangements. We are working to maximise the benefits of the arrangement and to ensure the transitions are as seamless as possible.

Importantly, these temporary arrangements will not delay the redevelopment of APCS.

Working together

Discussions with each level of Government and the project delivery team are continuing to ensure all stakeholders are kept informed. We are working together to provide guidance, information and certainty to all those involved in the project.

There will be a range of opportunities for staff, students, families and neighbours to engage with the project team over the next few months. The project website will be a source of updates and the latest information.

The next project information booth is scheduled on Saturday 5 August 2017 at Woolworths, 10 Fountain St, Alexandria 2-4pm.

Alternately you can contact info@apcsredevelopment.com.au.



Friday, 8 December 2017

Dear residents,

Re: Alexandria Park Community School

We are pleased to report that planning for the redevelopment of Alexandria Park Community School is progressing well and the scheduled completion of the construction remains on track for 2022.

The submission of the State Significant Development Application for the project to the NSW Department of Planning and Environment is scheduled for December 2017.

The project will deliver to the Alexandria Park community a new future-focused school to accommodate up to 1,000 primary school students and up to 1,200 secondary school students on one campus.

We invite you to visit an upcoming information booth to find out more about the project and provide feedback:

- Saturday 9 December 2017 at Woolworths Supermarket - 10 Fountain Street, Alexandria, 2:00pm – 4:00pm
- Tuesday 12 December 2017 at Alexandria Park Community School – main entry, corner of Power Ave & Park Road, Alexandria, 5:00pm-7:00pm
- Saturday 20 January 2018 at Carriageworks Farmers Markets - 245 Wilson Street, Eveleigh, 11:00am-1:00pm
- Saturday 27 January 2018 at Woolworths Supermarket - 10 Fountain Street, Alexandria, 2:00pm – 4:00pm

Details of the project will be available for public comment via the NSW Planning Portal – www.planningportal.nsw.gov.au

To receive regular updates, you are encouraged to register via info@apcsredevelopment.com.au

Kind regards,

APCS Redevelopment Project Team

info@apcsredevelopment.com.au



appendix 6

Design Review Panel – Letter of Endorsement

23 November 2017

**Design Review Panel 04
Advice Summary**

Distribution:

Alex Kibble (TKD)
Anna Harris (TKD)
Terry Denzil (Community)
Rod Stanton (DoE)
Georgia White (Savills)
Alaine Ross (Urbis)
Peter Mould (Panel)
Paul Berkemeier (Panel)

**ALEXANDRIA PARK COMMUNITY SCHOOL
DESIGN REVIEW 04 – 22 November, 2017
320 Pitt St, Sydney (Department of Planning and Environment)**

**CHAIR – Dillon Kombumerri
PANEL MEMBERS – Paul Berkemeier, Peter Mould**

The following summary is a record of the advice provided to the proponent team for the above project. This is the forth design review session undertaken for this proposal.

The Panel were satisfied TKD sufficiently addressed previous issues raised and now endorse the scheme as having the potential to achieve Design Excellence.

It is reiterated that the Panel recommends ongoing review, as well as ongoing engagement of TKD as lead design architect, subsequent to lodgment to protect the design integrity of the proposal to ensure that the quality of the built outcome is commensurate with the significance of the site.

Advice summary endorsed by the Chair:



Dillon Kombumeri
GANSW Principal Architect

Generally, all items noted in the third DRP advice letter were addressed to varying extent and drawings were provided with a greater level of detail. This included significant and identifiable changes to the design in response to the Panel's comments.

Acknowledging the early stage of design development, key issues which must continue to be developed in order to achieve design excellence detailed as follows:

Circulation and wayfinding.

- Generally horizontal and vertical circulation is now more logical and legible, assisted by the increased use of colour.
- The high school has a new foyer and entry however the pinch point at corner of playing field presents a challenge to resolve. The Panel suggested refocusing the high school entry directly off the main gathering space where there is ground level covered protection readily available from overhanging accommodation above. This will be beneficial by providing an external waiting space for after-hours use of the Hall.
- The capacity of the three proposed stairs needs to be tested to determine if a further forth set of stairs would be required.
- Connections and interfaces between external and internal spaces (especially rooftops) is now better defined.

Architectural language.

- The current proposed approach is now considered to be more expressive of the richness of the school's community and cultural context.
- The Panel supports the colour material palette proposed and encourages the design team to maximise involvement of local artists.
- The Panel reiterates that further development and resolution of the proposed screen element is required to understand its likely form or performance as an integrated architectural element, and its environmental impacts.
- The Panel believes there should be a greater resolution of environmental initiatives (sun shading, wind breaks, etc) and their impact on the architectural resolution of the building generally.

Design of fence and gates including roof top fencing.

- The Panel acknowledges the fencing strategy is clear and the design has improved.
- The Panel notes that the façade screen, roof-top fencing and perimeter fencing are now integrated with building design elements.
- Roof top shade elements were shown to demonstrate minimal visual impact for neighbours whilst maintaining visual privacy for school students. The Panel supports the folding of the screen element to help shading of the roof areas.

Contextual response.

- Current and potential future adjacent development, setbacks, heights and the proposed response to acoustics, overlooking etc. now demonstrate contextual response.

Integration of structure and plan.

- The Panel acknowledge provision of further detail as requested and support the proposed approach.

Flooding impacts

- The Panel acknowledges the provision of further detail and support the proposed integrated landscape / built edge response.

Public art

- The Panel supports the intent to integrate public art and note that a robust integrated public art strategy is required which includes commitment from DoE, program and budget.

Landscape design

- The Panel supports the detailed development of landscape concept overall, noting that issues raised above will require further development of the landscape strategy (integrated fencing, rooftop open space design).

Traffic

- The Panel notes the design team have investigated modal split of students arriving / departing the school, and reiterate that design opportunities should be proposed to increase non-car usage.
- It was also noted that a precinct plan was shown identifying current and potential future bike and pedestrian routes to bus stops, rail etc.

Further to this the Panel supports the proposed closure of Park Road to improve connection between the school and adjacent public park, and the potential to adjust the location of the playing fields to allow the school site to be less constrained.