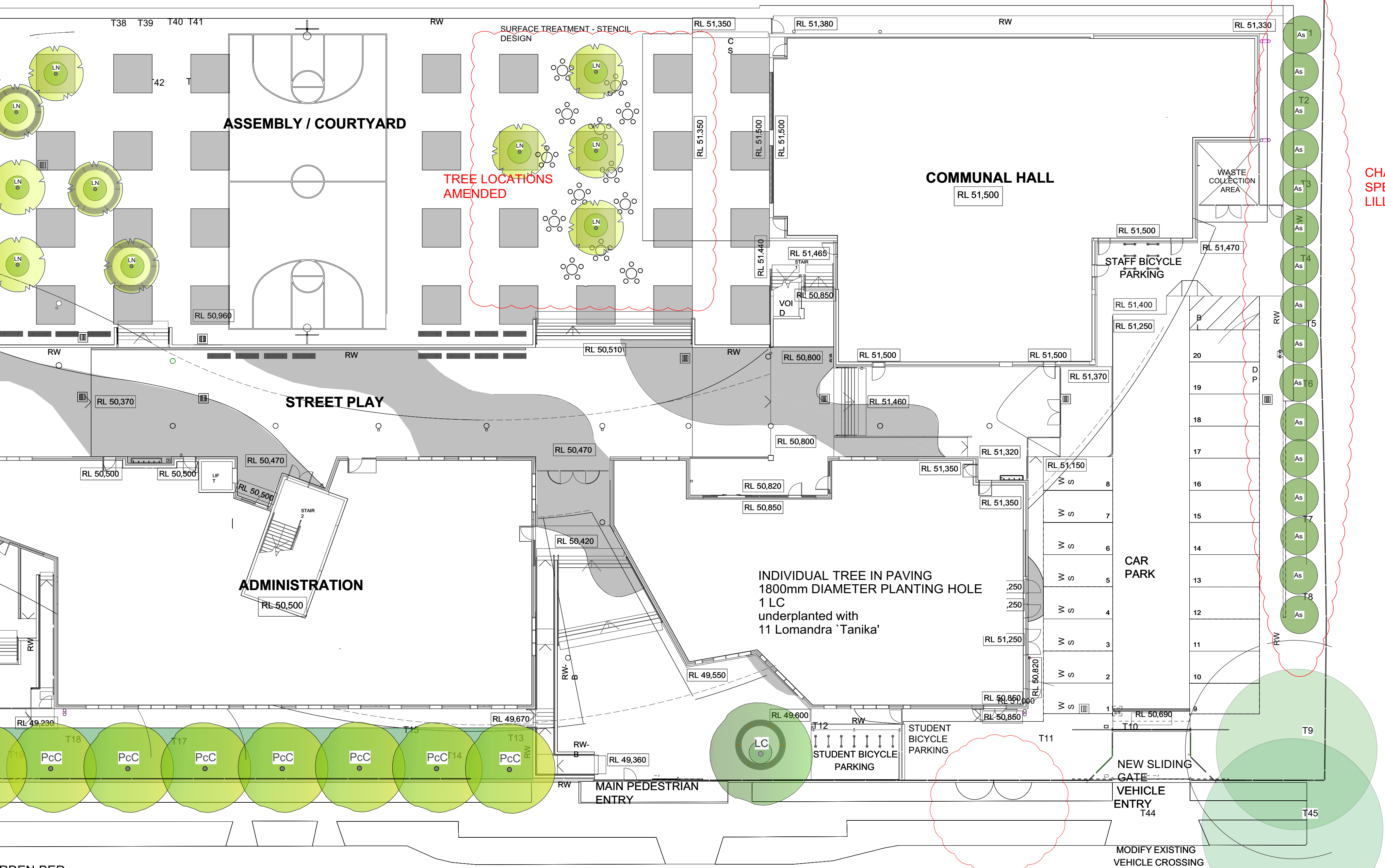


INDIVIDUAL TREES IN PAVING
1800mm DIAMETER PLANTING HOLE
6 LN
underplanted with
16 Lomandra 'Tanika' per tree

INDIVIDUAL TREES IN PAVING
1500mm DIAMETER PLANTNG HOLE
4 LN
underplanted with
9 Lomandra 'Tanika' per tree



CHANGE OF PLANT
SPECIES TO
LILLYPILLY - ACMENA

SHRUBS IN MULCHED MASS
PLANTING BED
16 X 100 LITRE
Acmena smithii 'Redhead'

PROPOSED PLANTING SCHEDULE
THIS SHEET

COMMON NAME	MATURE H x W	INSTALL POT SIZE	NO OFF
Acmena smithii 'Redhead'	4 x 2	100 litre	16
Crepe Myrtle	7 x 5	200 litre	4
Lomandra 'Tanika' 600 x 600	150mm		36

EXISTING TREE
RETAINED

RDEN BED
'tree'

ARCADIA STREET

PLOT DATE 28/9/20

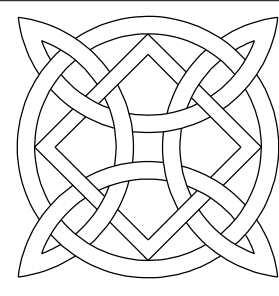
REV	BY	DATE	DESCRIPTION
1	LH	31.01.20	ISSUED FOR INFORMATION
2	LH	05.02.20	REISSUED FOR INFORMATION
3	LH	25.02.20	TREES MOVED MARGINALLY TO BE 3M MIN FROM ROOF OVERHANG
4	LH	27.04.20	AMEND POSITION OF DRIVEWAY FENCE + GATE TO STAFF CARPARK. WIDTH OF STAIRS REDUCED
5	LH	14.09.20	TREE LOCATIONS AMENDED
6	LH	22.09.20	CHANGE OF PLANT SPECIES TO BOUNDARY



STRUC. CIVIL & HYD
WOOLACOTT'S ENGINEERS
T: 02 82031500
MECH. ELEC. IT, COMMS & SEC.
JHA CONSULTING
T: 02 9437 1000
BCA
GROUP DLA
T: 02 8555 3160
STATUTORY PLANNER
DON FOX PLANNING P/L
T: 02 9473 4914

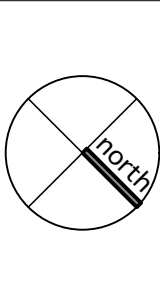
PERUMAL PEDAVOLI ARCHITECTS
T: +61 2 9261 0000
WEB: www.pp-a.com.au
Nominated Architect:
Vince Pedavoli NSW reg No. 5045

CONTRACT NUMBER
SINSW-18-1257



LORNA HARRISON
LANDSCAPE ARCHITECTS
68 Beattie Street
BALMAIN
NSW 2041
M 0403350023
E lorna@landarchitects.com

PENSHURST PUBLIC SCHOOL
18 Arcadia Street, Penhurst
LANDSCAPE SITE PLAN NORTH



PROJECT	DISCIPLINE	PHASE	SERIES NUMBER	REVISION
555	LAN	CD	02_N	6

ISSUED FOR CONSTRUCTION