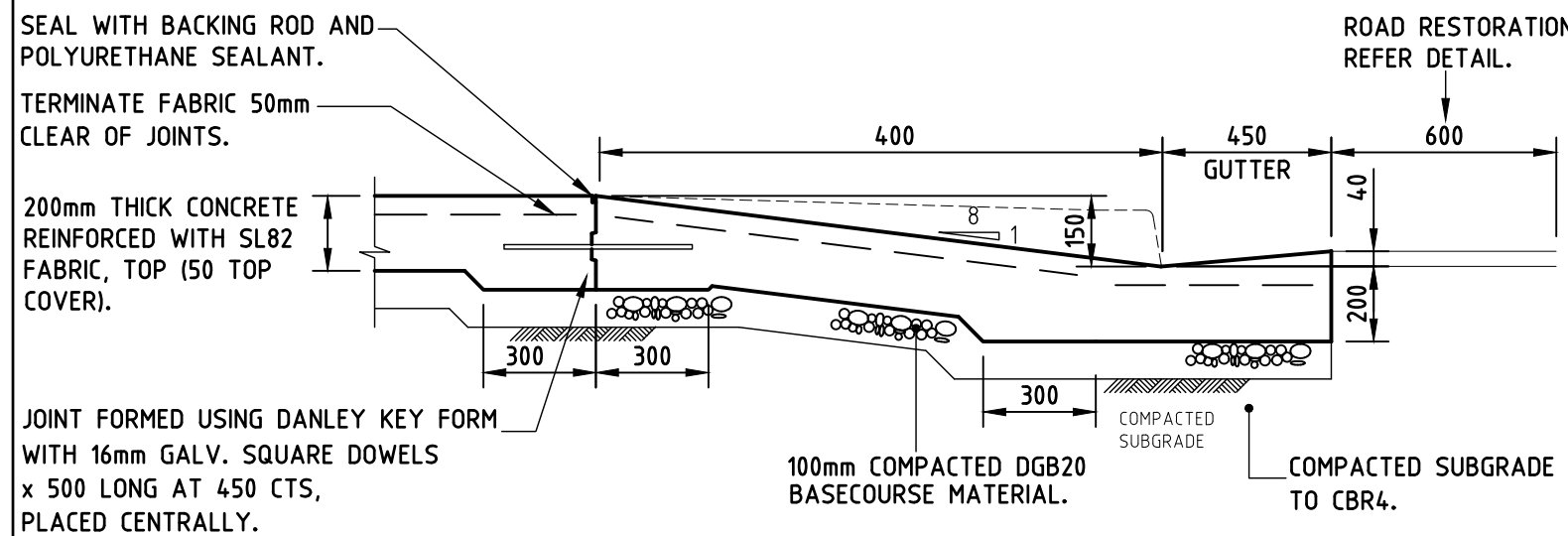
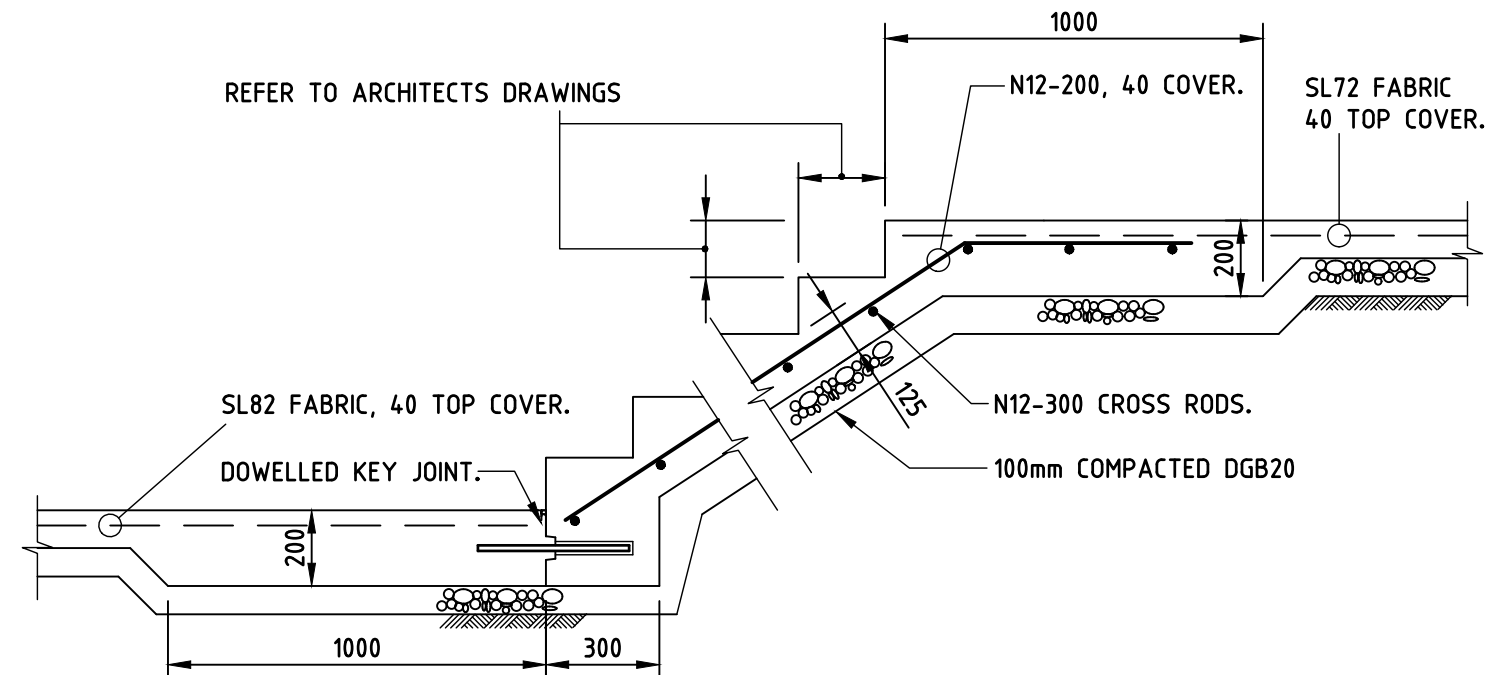


TYPICAL SHOTCRETE WALL DETAIL

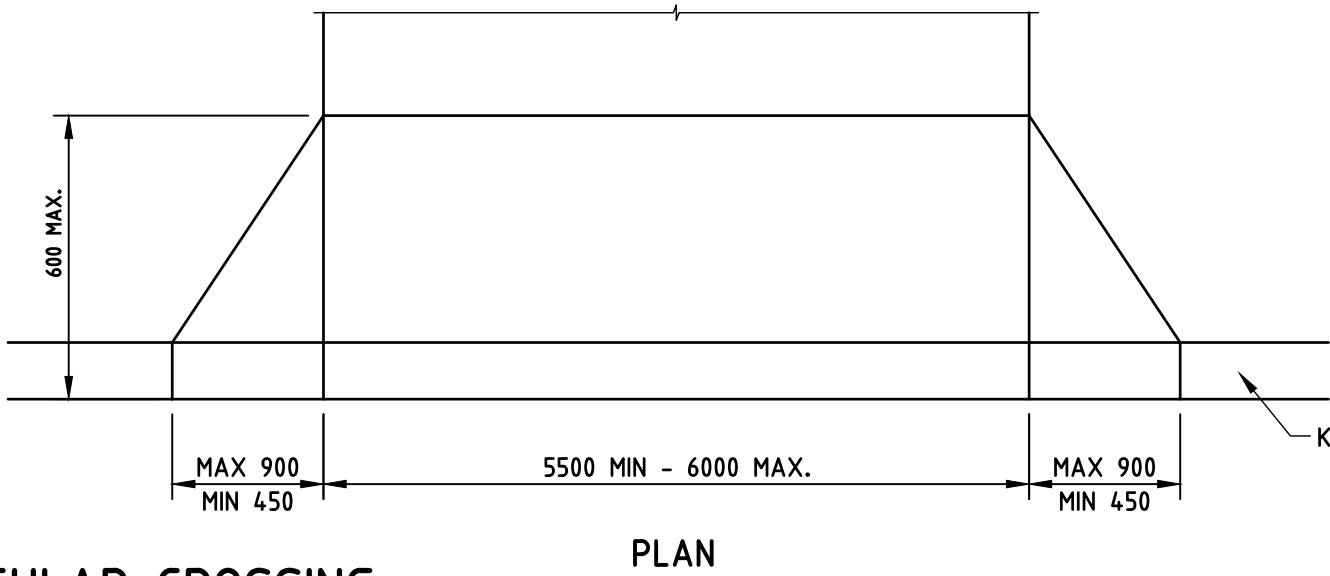
○ DENOTES SPLICE BARS



TYPICAL SECTION



TYPICAL STAIR DETAIL

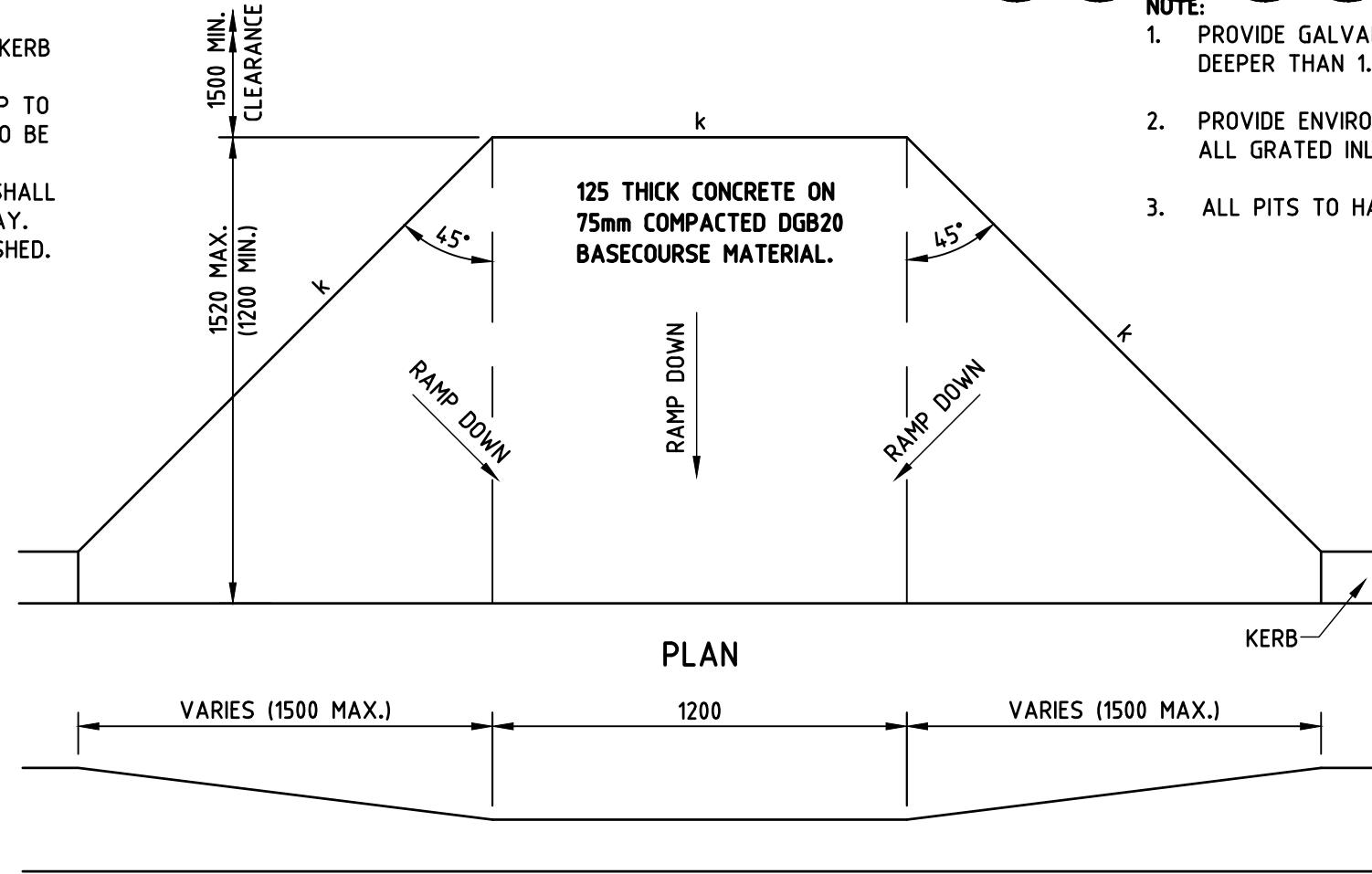


PLAN

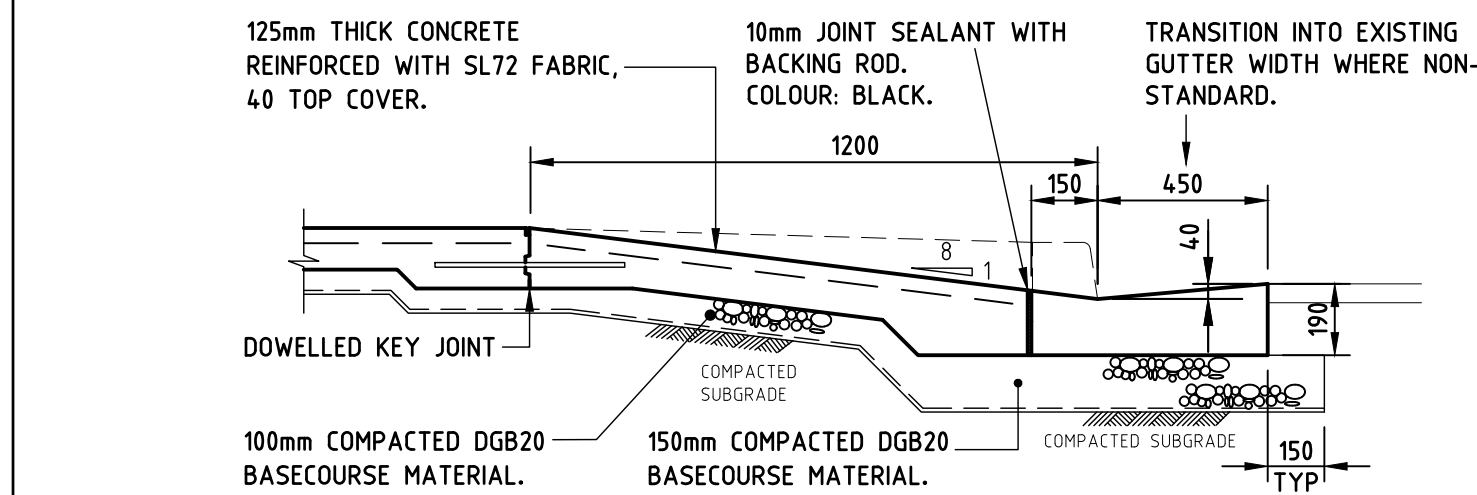
CONCRETE VEHICULAR CROSSING

NOTES:

1. DRIVEWAY TO BE GENERALLY PERPENDICULAR TO KERB LINE, UNLESS APPROVED OTHERWISE.
2. FOR NARROW FOOTPATH WIDTHS, LENGTH OF RAMP TO BE AS SHORT AS POSSIBLE, OR LAYBACK ONLY TO BE USED IN APPROVED APPLICATIONS.
3. FOR DRIVEWAYS WIDER THAN 6m, A TOOL JOINT SHALL BE PROVIDED ALONG THE CENTRE OF THE DRIVEWAY.
4. DRIVEWAY CONCRETE SHALL BE WOOD FLOAT FINISHED.



ELEVATION



SECTION

KERB RAMP (KR)  
IN ACCORDANCE WITH AS 1428.1

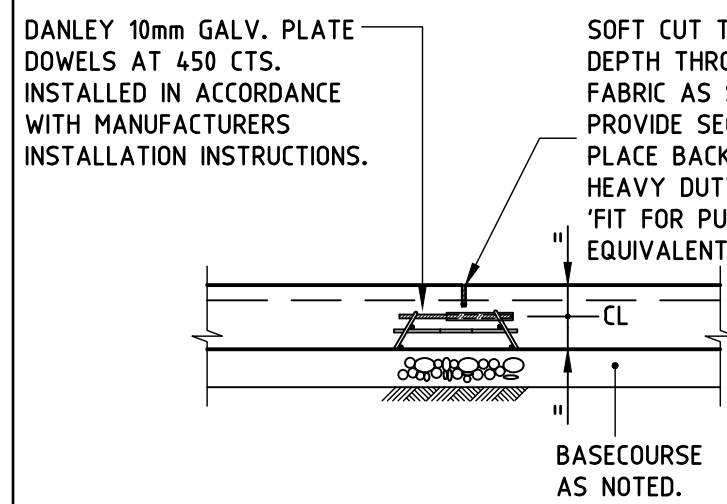
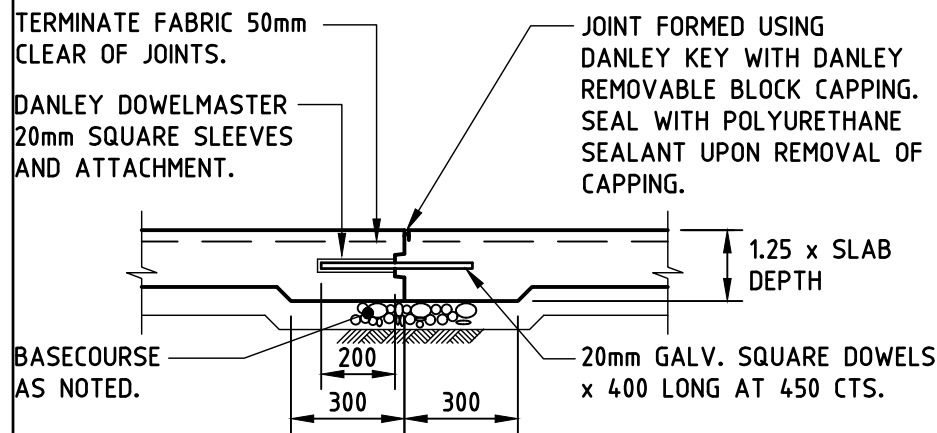
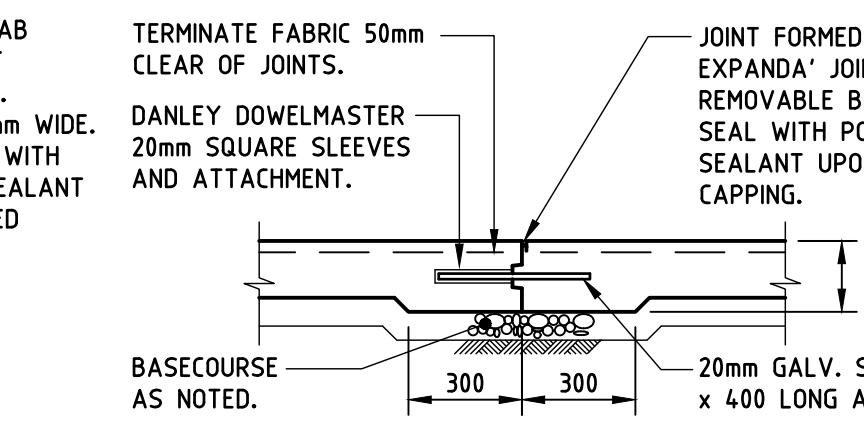


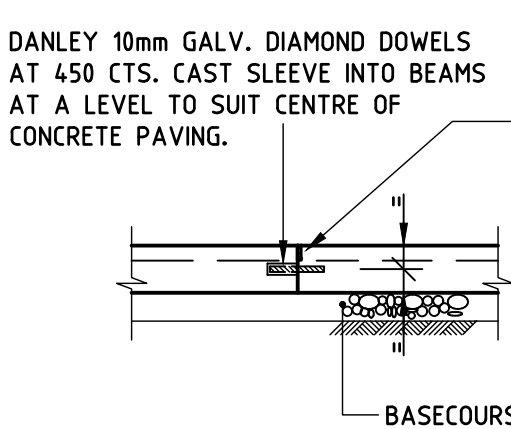
PLATE DOWEL JOINT  
SHOWN 'pd' ON PLAN.



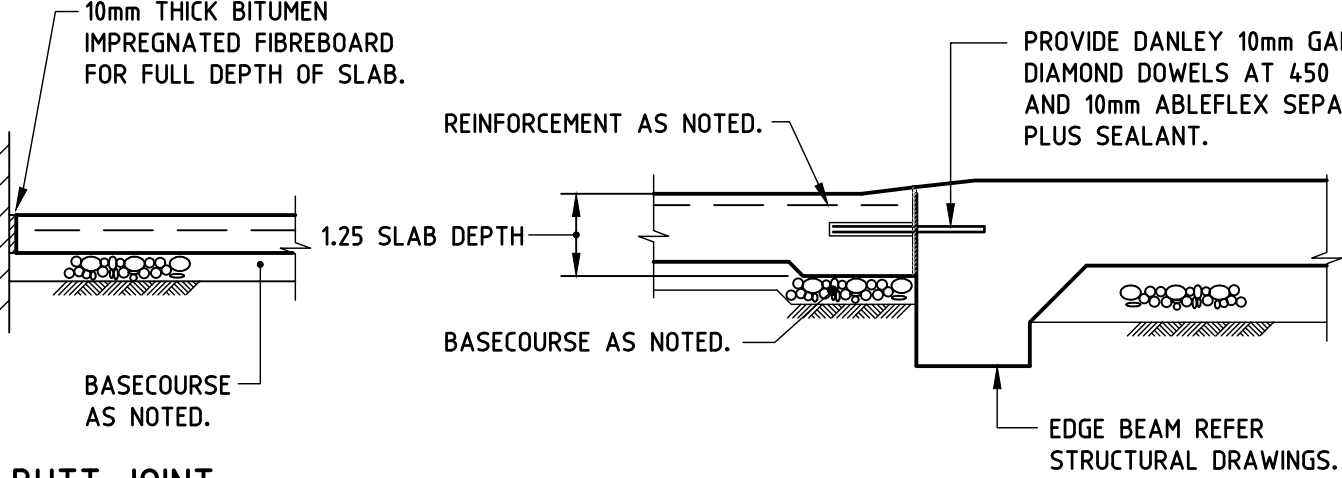
DOWELLED KEY JOINT  
SHOWN 'k' ON PLAN.



DOWELLED EXPANSION JOINT  
SHOWN 'ej' ON PLAN.



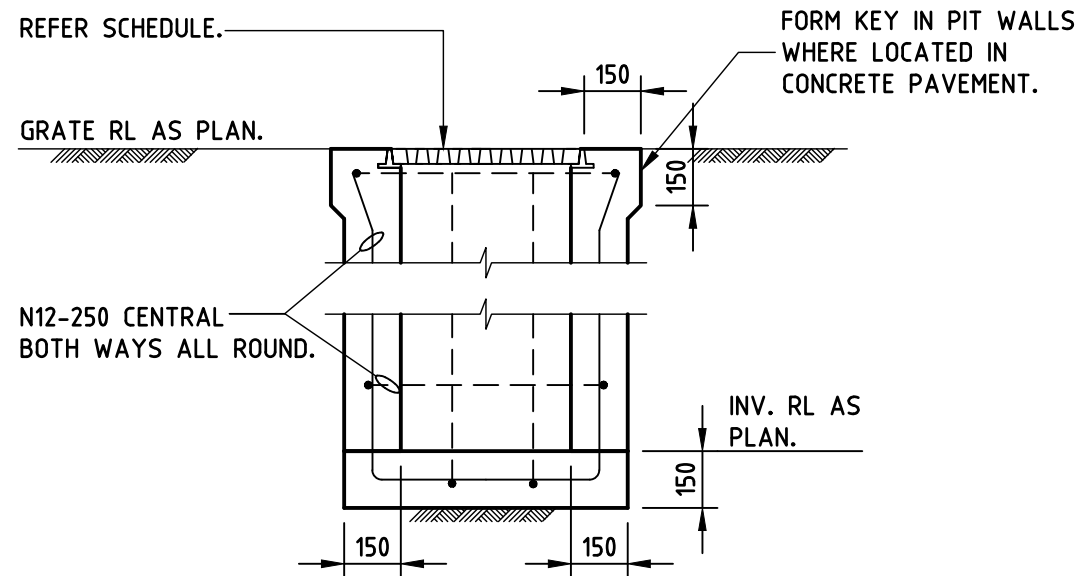
DIAMOND DOWEL JOINT  
SHOWN 'dd' ON PLAN.



**BUTT JOINT**  
TO BE PROVIDED ALONG BUILDING LINE WHERE CONCRETE PAVEMENT ABUTS. EXCEPT AT GRATED DRAINS AND DOORWAYS. FOR JOINTS AT GRATED DRAINS AND DOORWAYS REFER TO STRUCTURAL DRGS

AT DOOR THRESHOLDS

CONCRETE JOINT DETAILS



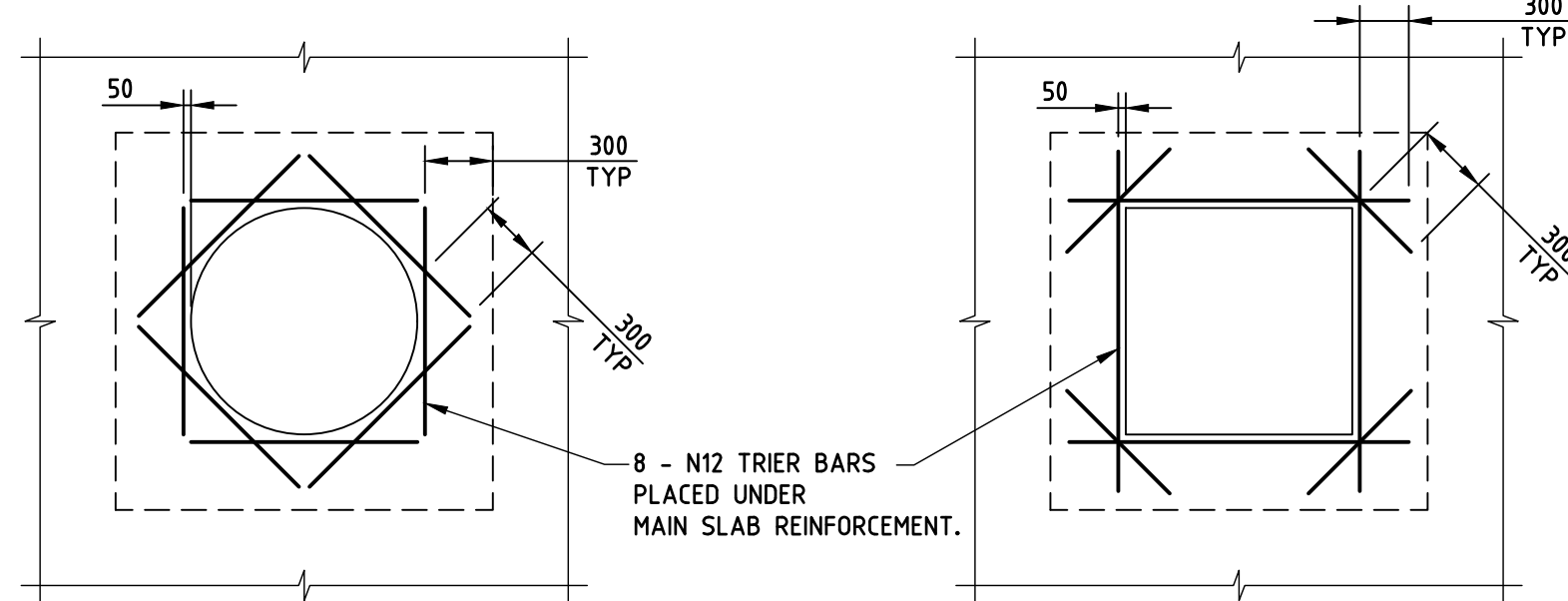
STANDARD PIT

PIT SCHEDULE

PIT No.	SIZE	GRATE/COVER & FRAME TYPE
1	600 x 600	CLASS 'A' GRATE AND FRAME
2	900 x 900	CLASS 'B' HEELGUARD STYLE GRATE AND FRAME
3	600 x 900	CLASS 'B' COVER AND FRAME
4	600 x 900	CLASS 'B' COVER AND FRAME
5	600 x 900	CLASS 'B' COVER AND FRAME
6	600 x 900	CLASS 'B' COVER AND FRAME
7	900 x 900	CLASS 'B' COVER AND FRAME
8	900 x 900	CLASS 'B' COVER AND FRAME
9	600 x 600	CLASS 'C' GRATE AND FRAME
10	600 x 600	CLASS 'B' HEELGUARD STYLE GRATE AND FRAME
11	900 x 900	CLASS 'B' COVER AND FRAME
12	600 x 900	CLASS 'B' HEELGUARD STYLE GRATE AND FRAME
15	600 x 900	CLASS 'B' HEELGUARD STYLE GRATE AND FRAME
16	600 x 600	CLASS 'B' HEELGUARD STYLE GRATE AND FRAME
18	900 x 900	CLASS 'B' GRATE AND FRAME
19	900 x 900	CLASS 'B' GRATE AND FRAME
20	600 x 600	CLASS 'B' GRATE AND FRAME

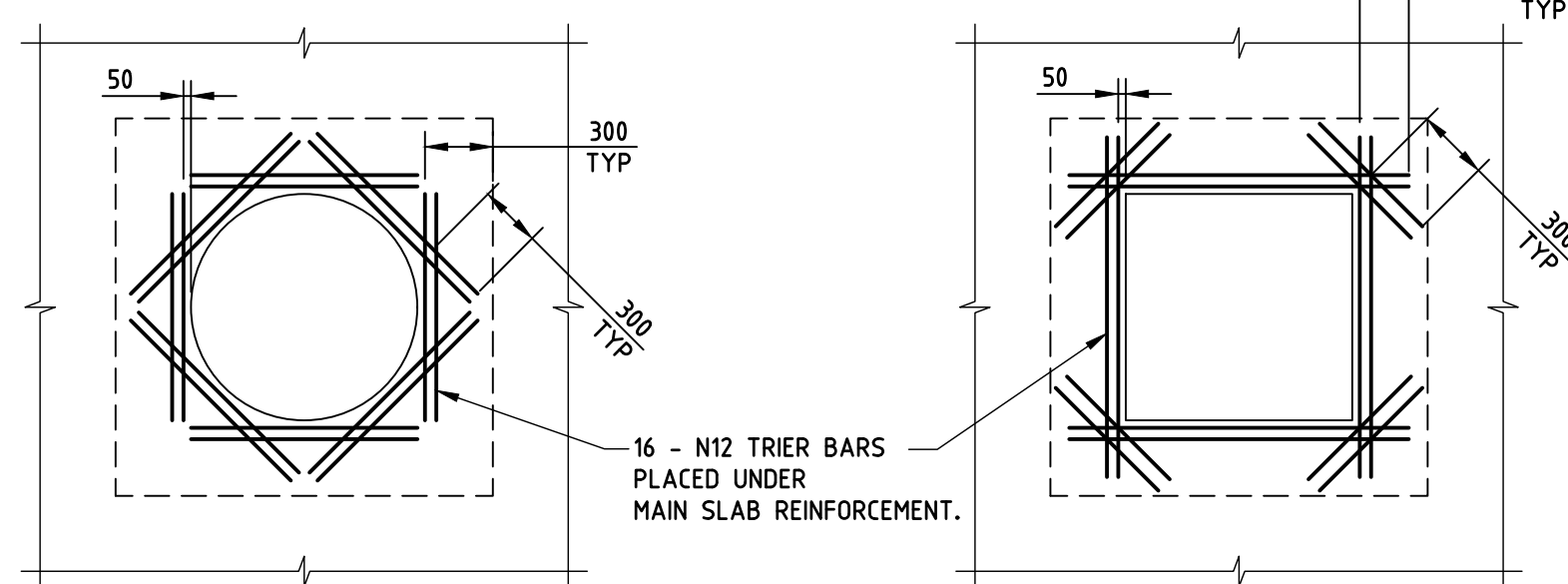
NOTE:

1. PROVIDE GALVANISED STEP IRONS AT PITS DEEPER THAN 1.2m IN ACCORDANCE WITH AS 3500.
2. PROVIDE ENVIROPOD INSERTS TO BE INSTALLED IN ALL GRATED INLET PITS.
3. ALL PITS TO HAVE LOCKABLE SECURE GRATES



BASE SLAB - REINFORCING DETAIL  
FOR PENETRATIONS = <1200mm

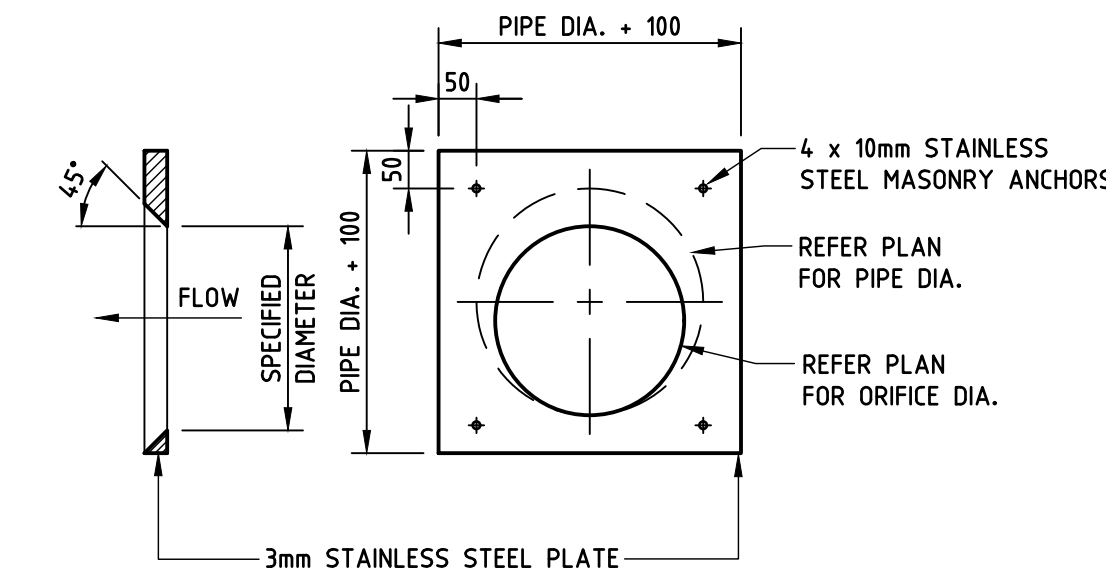
BASE SLAB - REINFORCING DETAIL  
FOR PENETRATIONS = <1200mm IN BOTH DIRECTIONS



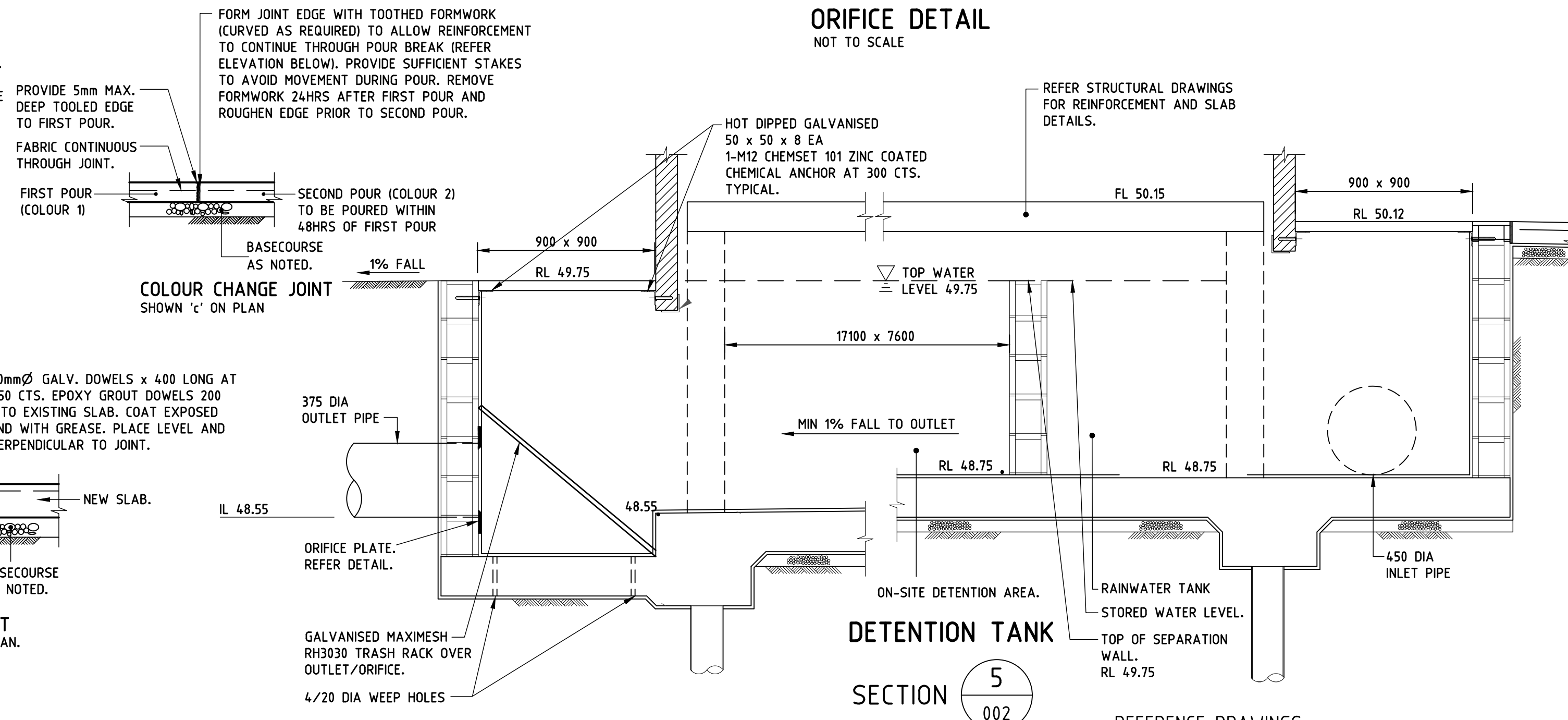
BASE SLAB - REINFORCING DETAIL  
DETAIL FOR CIRCULAR PENETRATIONS

BASE SLAB - REINFORCING DETAIL  
DETAIL FOR SQUARE PENETRATIONS

TYPICAL CONCRETE PAVEMENT PENETRATION DETAILS



ORIFICE DETAIL  
NOT TO SCALE



SECTION 5  
002

REFERENCE DRAWINGS:

FOR STANDARD NOTES & DRAWING LIST REFER TO DRG. No. CIV\_01\_001.

REV	BY	DATE	DESCRIPTION
A	SETB	31.08.18	ISSUE FOR TENDER
B	SETB	05.02.19	DRAFT IFC
C	AP	18.04.19	GATEWAY 4 REVIEW-COLOUR CHANGE JOINT DETAIL
01	A.P.	10.05.19	ISSUE FOR CONSTRUCTION
02	A.P.	21.06.19	PAVEMENT PENETRATION DETAILS ADDED
03	A.P.	26.06.19	OSD SECTION REVISED
04	A.P.	16.10.19	PIT SCHEDULE AMENDED
05	A.P.	16.09.20	PIT SCHEDULE AMENDED

<b>Woolacotts.</b> CONSULTING ENGINEERS T +61 2 8203 1500   www.woolacotts.com.au Ground Floor, 12a Brown Street, Chatswood, NSW 2067 <small>This drawing is copyright Woolacotts Consulting Engineers Pty Ltd. It is to be used only for the project and site specified. No part of this drawing may be reproduced without the written permission of Woolacotts Consulting Engineers Pty Ltd.</small>			
Job Number	Approved	Verified	Prepared
16-242	SETB 10.05.19	JK 10.05.19	JK 10.05.19



STRUCTURE, CIVIL & HYDRAULIC WOOLACOTT'S ENGINEERS T: 02 8203 1500 MECH. ELECT. IT, COMMS & SEC. JHA CONSULTING T: 02 9437 1000 BCA GROUP DIA T: 02 8355 3160 LANDSCAPE LORNA HARRISON P/L T: 02 9555 1147	PERUMAL PEDAVOLI ARCHITECTS T: 02 9291 0000 WEB: www.ppa-a.com.au Nominated Architect Voice Pedavoli NSW reg No.5045 STATUTORY PLANNER DON FOX PLANNING P/L T: 02 9473 6814
---	--

<b>PERUMAL PEDAVOLI</b> ARCHITECTS
---------------------------------------

<b>PENSHURST PUBLIC SCHOOL</b> 18 Arcadia Street, Penshurst Drawing Name <b>CIVIL WORKS DETAILS - SHEET 2</b>
--

CONTRACT NUMBER SINSW-18-1257	DRAWN [ ]	CHECKED [ ]	VERIFIED [ ]	Date SEPTEMBER 2020	SCALE 1:20 @ A1
PROJECT NORTH [ ]	Drawing Number [ ]	Revision [ ]	PROJECT CODE 3199 - CIV - CD - 01_006	PHASE [ ]	SERIES NUMBER [ ]
				05	