

APPENDIX A

Approved and Denoted Proposed Modification

Mod 2 to SSD 8209

Approved and proposed changes as referenced in Section 3.0 Proposed Development of Statement of Environmental Effects.

1. Removal of First Floor Office:

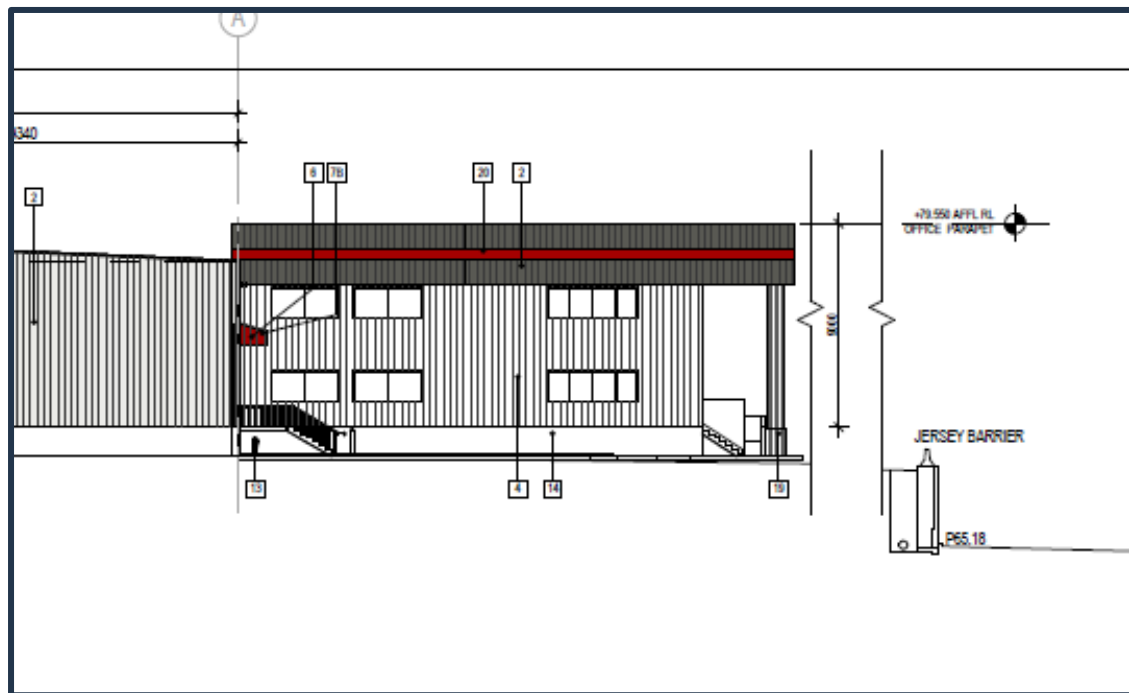


Figure 1: Approved Office Elevation

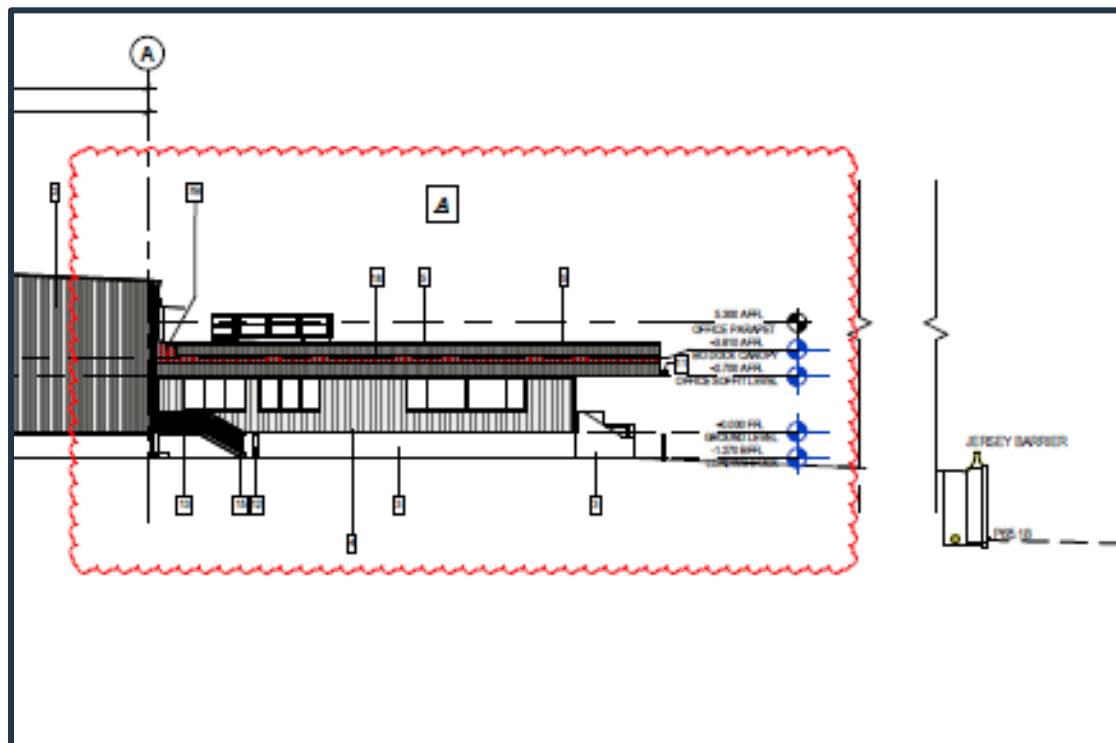


Figure 2: Proposed Office Elevation

2. Reconfiguration of Office Layout and Design Amendments

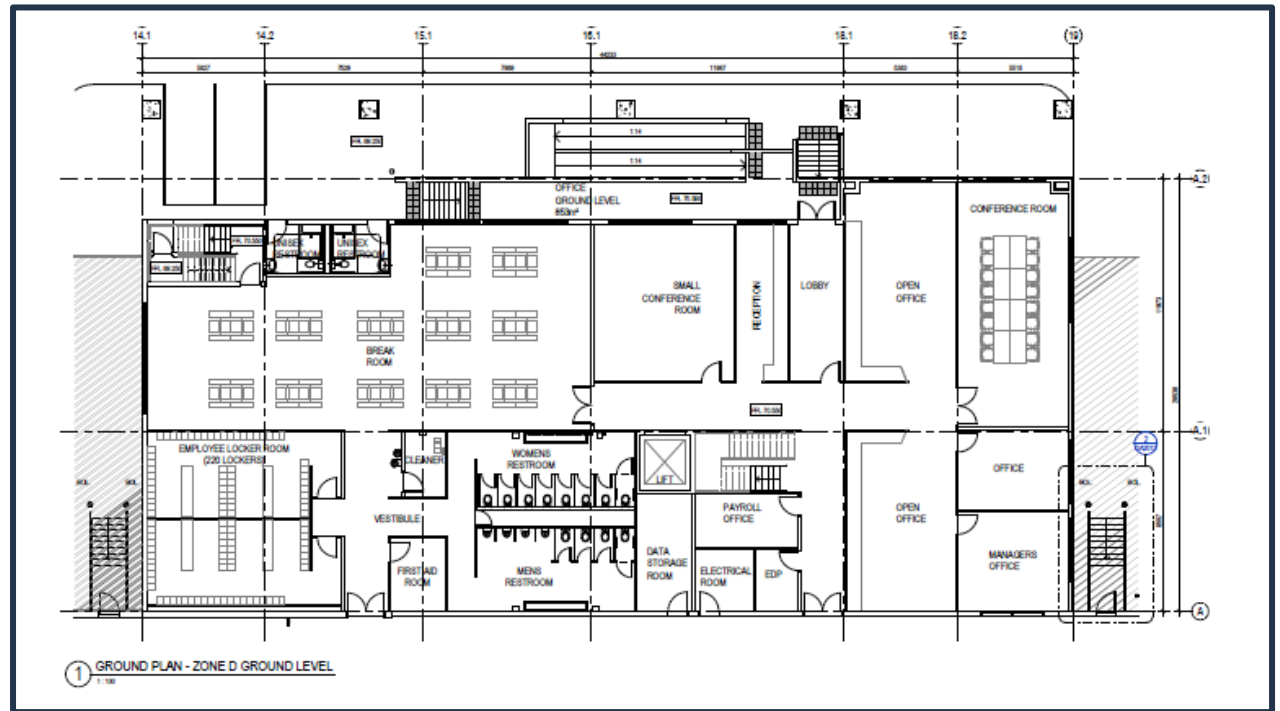


Figure 3: Approved Ground Floor Office Layout

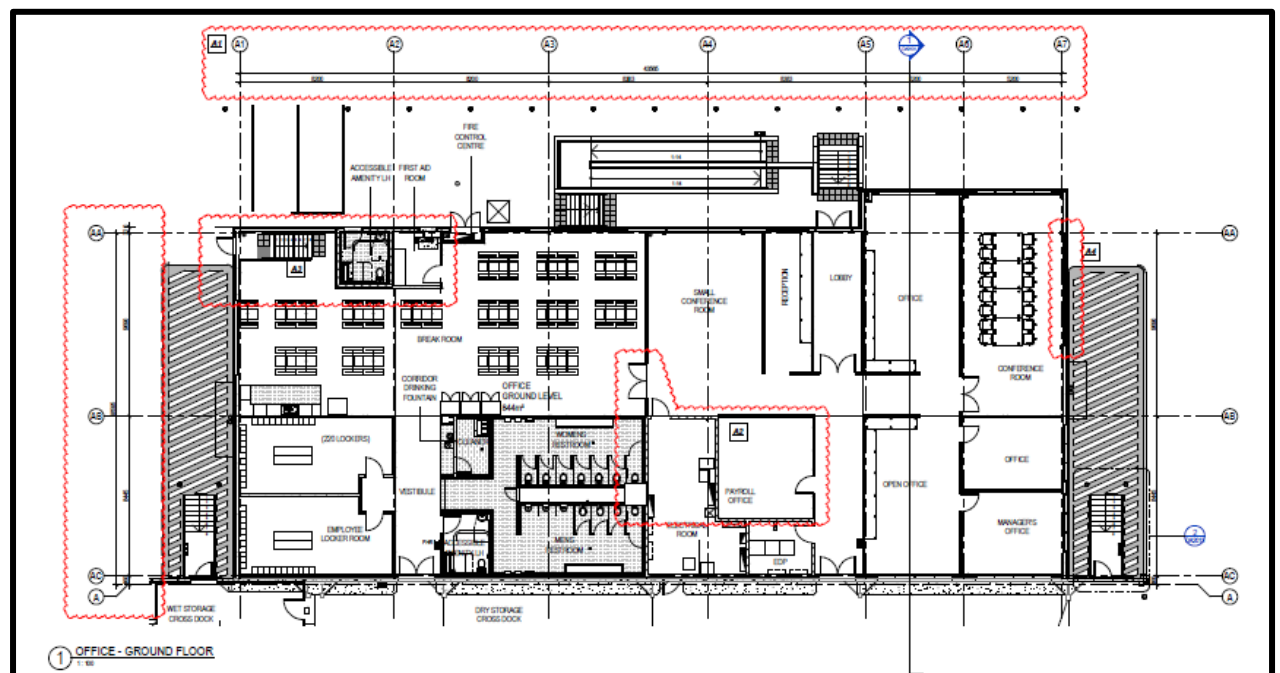


Figure 4: Proposed Office Layout

3. Proposed Relocation of Office Space to Dry Depot to be used as Optical Lab

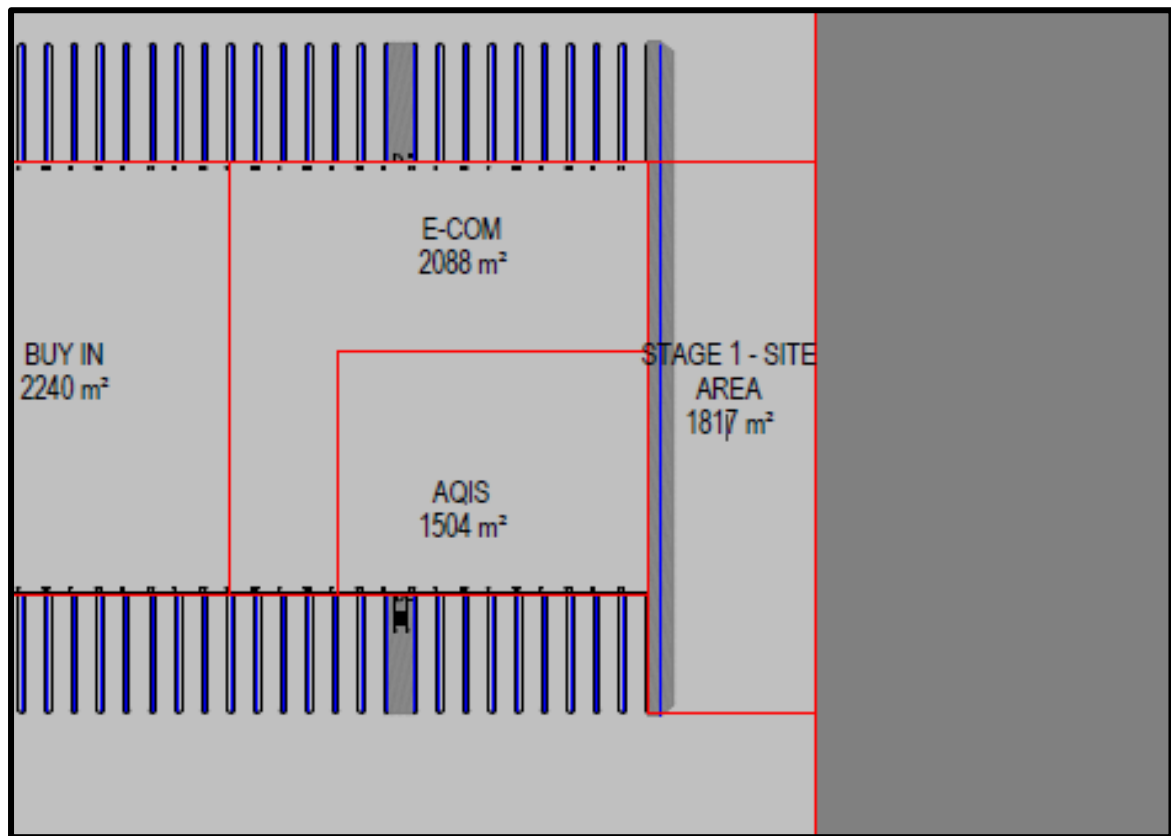


Figure 5: Approved Ground Floor Stage 1 Area Plan

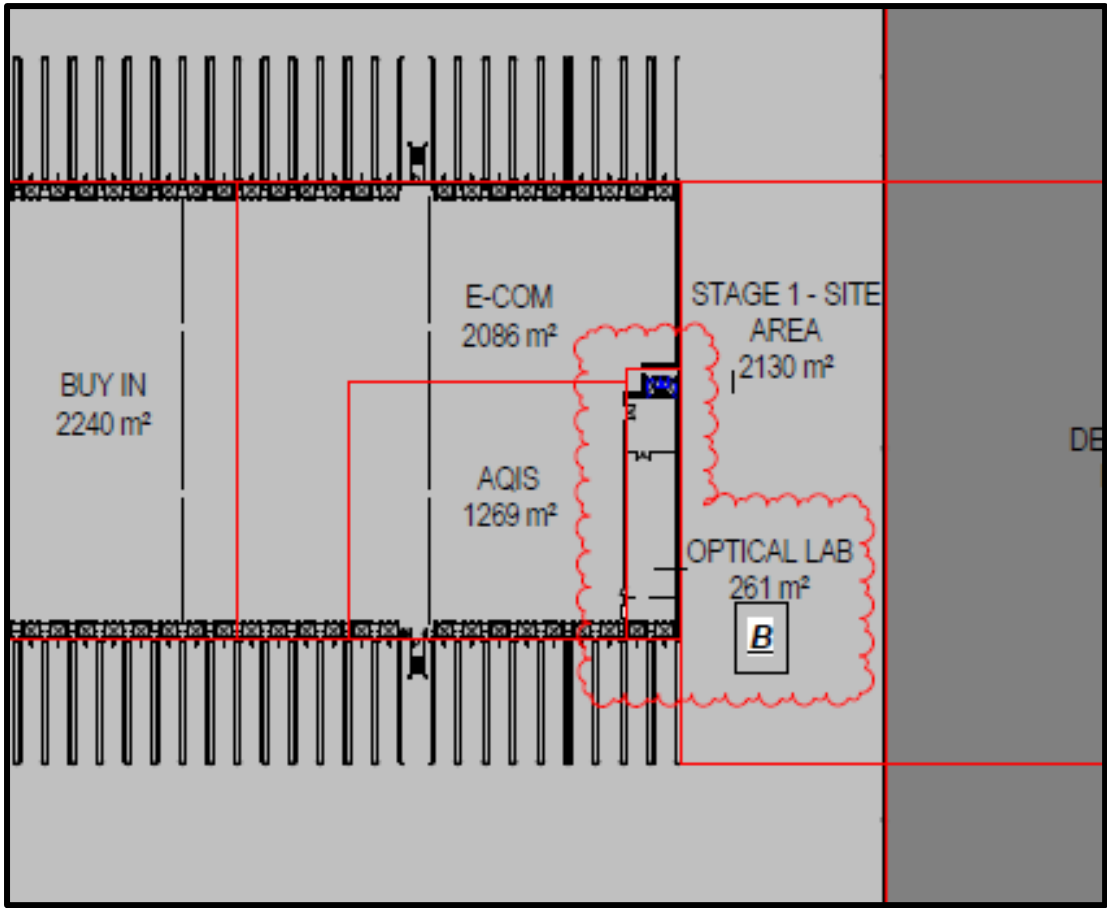


Figure 6: Proposed Ground Floor Stage 1 Area Plan