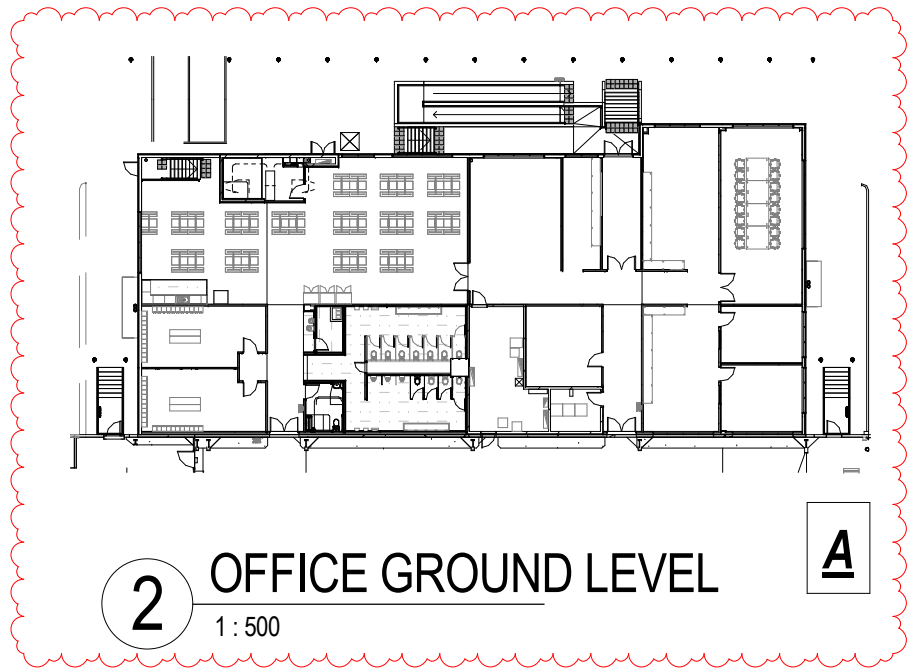


AMENDMENTS LEGEND

ITEM	DESCRIPTION
A	OFFICE LEVEL 1 REMOVED, OFFICE GROUND FLOOR AMENDED.
B	OFFICE FROM L01 RELOCATED TO THE NORTH WEST OF THE DRY DEPOT
C	CHANGES TO DATA



LEGEND

---	SITE BOUNDARY
---	BUILDING AREA
---	GFA PER COUNCIL DEFINITION
---	INTERNAL WAREHOUSE AREA
---	PEDESTRIAN PATH
---	SEWER MAIN
---	WATER MAIN
---	STORM WATER PIT TO CIVIL ENGINEERS DETAIL
---	STORM WATER JUNCTION PIT TO CIVIL ENGINEERS DETAIL
---	WATER QUALITY DEVICE TO CIVIL ENGINEERS DETAIL
---	BUILDING SETBACK
---	LANDSCAPE SETBACK
---	STAGE 2 BUILDING LINE
---	DIPLOMAT STYLE FENCE
---	CHAIN MESH FENCE BY VENDOR
---	BLACK PLASTIC CHAIN MESH FENCE
---	UNDERGROUND RAINWATER REUSE TANK TO CIVIL ENGINEERS DETAIL
---	LIGHTPOLE
---	FUTURE FORKLIFTS/ CHARGERS - ALLOW FOR CABLE FEED IN ANTICIPATION OF CONNECTING TO CHARGERS IN THE FUTURE
---	FORKLIFTS/ CHARGERS - ALLOW TO BRACKET MOUNT CHARGER OFF WALL OR COLUMN AS DETAILED
---	DOCK DOOR OPENINGS WITH SECONDARY MOTORISED VENTILATION MESH SHUTTER OVER OPENING
---	FUTURE EPJ/ CHARGER POSITION - PROVIDE CONDUIT WITH DRAW WIRE IN SLAB FOR FUTURE CONNECTION WHEN APPROPRIATE
---	EPJ/ CHARGER MOUNTED ON DOUBLE CHARGER FLOOR STAND SUPPLIED BY COSTCO

NOTE:

REFER TO LANDSCAPE ARCHITECT DRAWINGS FOR DETAILS OF ALL LANDSCAPE WORKS WITHIN THE SITE INCLUDING PLANTING, PAVING AND SCREENING.

NOTE:

NON-BONDED KNOCKOUT DOOR TO BE PROGRESSIVELY ADDED AT THE DISCRETION OF COSTCO OVER THE NEXT FIVE YEARS OR SO

PROJECT DATA

CLIENT:	COSTCO WHOLESALE 17-21 PARRAMATTA RD LIDCOMBE NSW 2141
PROJECT ADDRESS:	OAKDALE INDUSTRIAL SITE HORSLEY PARK NSW, 2175

SITE DATA

SITE AREA	R <sup>2</sup>	m <sup>2</sup>
STAGE 1 SITE AREA	1175140 R <sup>2</sup>	109174 m <sup>2</sup>
STAGE 2 FUTURE DEVELOPMENT SITE AREA	361538 R <sup>2</sup>	33588 m <sup>2</sup>
Grand total: 20	1536678 R <sup>2</sup>	142762 m <sup>2</sup>

BUILDING DATA

STAGE 1 DEPOT	R <sup>2</sup>	m <sup>2</sup>
STAGE 1 DRY DEPOT	128547 R <sup>2</sup>	11942 m <sup>2</sup>
STAGE 1 WET DEPOT INCLUDING FREEZER	92906 R <sup>2</sup>	8631 m <sup>2</sup>
Grand total: 7	221453 R <sup>2</sup>	20574 m <sup>2</sup>
STAGE 1 SITE BUILDING AREA	R <sup>2</sup>	m <sup>2</sup>
STAGE 1 BALERS ROOM	785 R <sup>2</sup>	73 m <sup>2</sup>
STAGE 1 GUARD HOUSE	907 R <sup>2</sup>	84 m <sup>2</sup>
STAGE 1 MAIN SWITCH ROOM	1279 R <sup>2</sup>	119 m <sup>2</sup>
STAGE 1 OFFICE	8904 R <sup>2</sup>	827 m <sup>2</sup>
STAGE 1 OFFICE BUILDING AMENITY ROOM	184 R <sup>2</sup>	17 m <sup>2</sup>
STAGE 1 PLANT AMENITY ROOM	180 R <sup>2</sup>	17 m <sup>2</sup>
STAGE 1 REFRIGERATION PLANT ROOM	2128 R <sup>2</sup>	198 m <sup>2</sup>
STAGE 1 WATER TREATMENT PLANT	36 R <sup>2</sup>	9 m <sup>2</sup>
Grand total: 9	14462 R <sup>2</sup>	1344 m <sup>2</sup>
TOTAL STAGE 1 DEPOT & BUILDING AREA	R <sup>2</sup>	m <sup>2</sup>
	235915 R <sup>2</sup>	21917 m <sup>2</sup>
DRY STORAGE AREA	R <sup>2</sup>	m <sup>2</sup>
DRY STORAGE CROSS DOCK	65509 R <sup>2</sup>	6086 m <sup>2</sup>
BUY IN	24114 R <sup>2</sup>	2240 m <sup>2</sup>
E-COM	22456 R <sup>2</sup>	2086 m <sup>2</sup>
AQIS	13660 R <sup>2</sup>	1269 m <sup>2</sup>
OPTICAL LAB	2808 R <sup>2</sup>	261 m <sup>2</sup>
Grand total: 5	128547 R <sup>2</sup>	11942 m <sup>2</sup>
WET STORAGE AREA	R <sup>2</sup>	m <sup>2</sup>
WET STORAGE CROSS DOCK	65454 R <sup>2</sup>	6081 m <sup>2</sup>
FREEZER	27452 R <sup>2</sup>	2550 m <sup>2</sup>
Grand total: 2		8631 m <sup>2</sup>

TRUCK DOOR DATA

NON-BONDED RECEIVING DOORS	TOTAL
DRY STORAGE RECEIVING DOORS	26
WET STORAGE RECEIVING DOORS	20
Grand total: 46	46
NON-BONDED KNOCKOUT RECEIVING DOORS	TOTAL
DRY STORAGE KNOCKOUT RECEIVING DOORS	19
WET STORAGE KNOCKOUT RECEIVING DOORS	4
NON-BONDED SHIPPING DOORS	TOTAL
DRY STORAGE SHIPPING DOORS	22
WET STORAGE SHIPPING DOORS	20
Grand total: 42	42
NON-BONDED KNOCKOUT SHIPPING DOORS	TOTAL
DRY STORAGE KNOCKOUT SHIPPING DOORS	23
WET STORAGE KNOCKOUT SHIPPING DOORS	5
Grand total: 28	28
TOTAL DOCKS	TOTAL
TOTAL DOCKS	139
Grand total: 139	139

PARKING DATA

PARKING DATA	
STAGE 1 STAFF PARKING	232
STAGE 1 STAFF PARKING (ACCESSIBLE)	6
Grand total: 238	238

HARDSTAND

HARDSTAND	Area
STAGE 1 - HARDSTAND	66383 m <sup>2</sup>

EPJ & FORKLIFT CHARGER

EPJ & FORKLIFT CHARGER		
Item	DAY 1 COUNT	FUTURE COUNT
EPJ/ CHARGER DRY & WET	22	10
FORKLIFT/ CHARGER DRY AREA	20	8
FORKLIFT/ CHARGER WET AREA	13	5

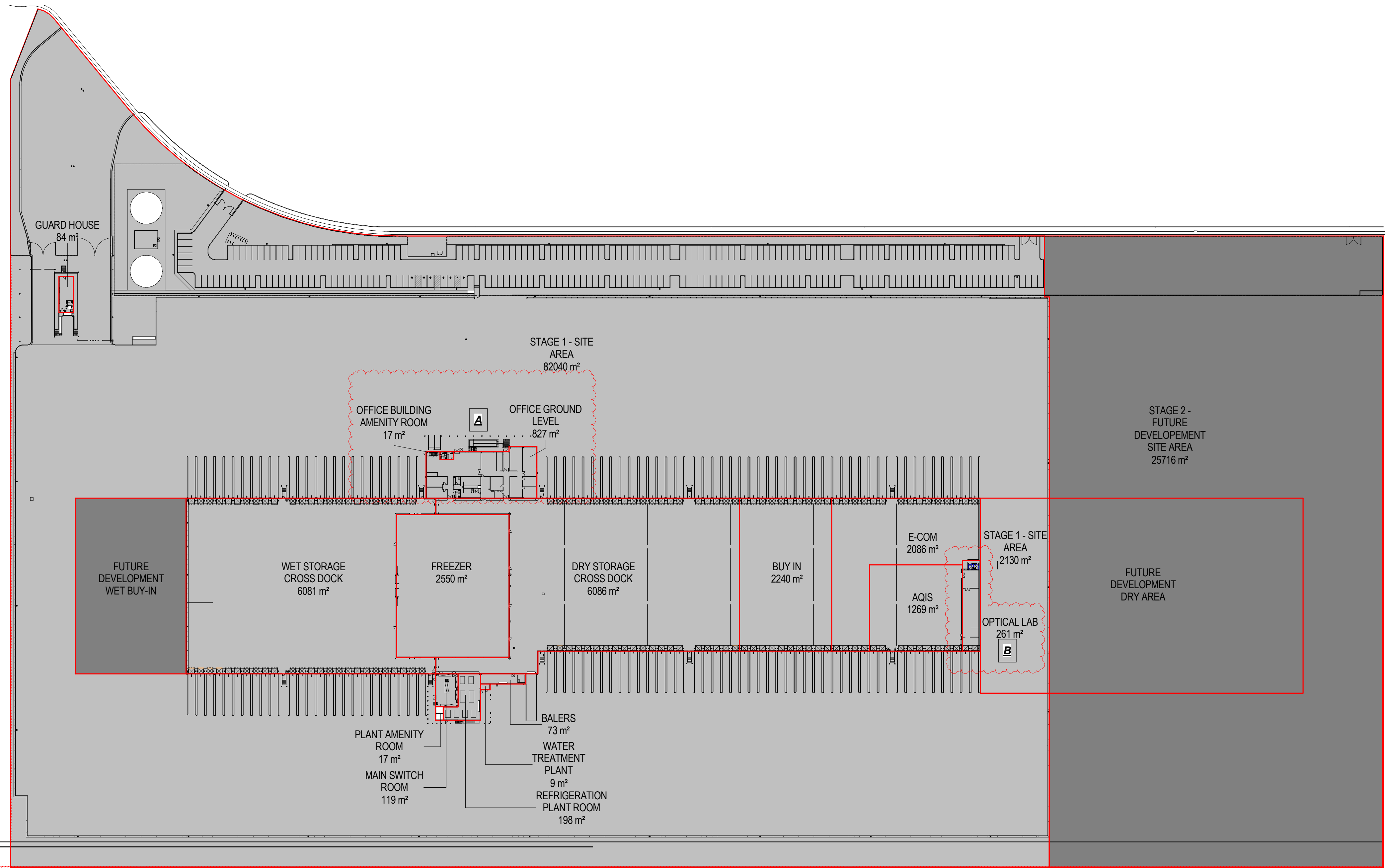


AMENDMENTS LEGEND

ITEM	DESCRIPTION
A	OFFICE LEVEL 1 REMOVED, OFFICE GROUND FLOOR AMENDED.
B	OFFICE FROM L01 RELOCATED TO THE NORTH WEST OF THE DRY DEPOT
C	CHANGES TO DATA

LEGEND

- STAGE 1
- STAGE 2



1 GROUND LEVEL - AREA STAGE 1  
1 : 100

PROJECT DATA

CLIENT:	COSTCO WHOLESALE 17-21 PARRAMATTA RD LIDCOMBE NSW 2141
PROJECT ADDRESS:	OAKDALE INDUSTRIAL SITE HORSLEY PARK NSW, 2175

SITE DATA

SITE AREA	ft²	m²
STAGE 1 SITE AREA	1175140 ft²	109174 m²
STAGE 2 FUTURE DEVELOPMENT SITE AREA	361538 ft²	33688 m²
Grand total: 20	1536678 ft²	142762 m²

BUILDING DATA

STAGE 1 DEPOT	ft²	m²
STAGE 1 DRY DEPOT	128547 ft²	11942 m²
STAGE 1 WET DEPOT INCLUDING FREEZER	92906 ft²	8631 m²
Grand total: 7	221453 ft²	20574 m²

STAGE 1 SITE BUILDING AREA	ft²	m²
STAGE 1 BALERS ROOM	785 ft²	73 m²
STAGE 1 GUARD HOUSE	907 ft²	84 m²
STAGE 1 MAIN SWITCH ROOM	1219 ft²	119 m²
STAGE 1 OFFICE	8904 ft²	827 m²
STAGE 1 OFFICE BUILDING AMENITY ROOM	184 ft²	17 m²
STAGE 1 PLANT AMENITY ROOM	180 ft²	17 m²
STAGE 1 REFRIGERATION PLANT ROOM	2128 ft²	198 m²
STAGE 1 WATER TREATMENT PLANT	95 ft²	9 m²
Grand total: 9	14462 ft²	1344 m²

TOTAL STAGE 1 DEPOT & BUILDING AREA	ft²	m²
	235915 ft²	21917 m²

DRY STORAGE AREA	ft²	m²
DRY STORAGE CROSS DOCK	65509 ft²	6086 m²
BUY IN	24114 ft²	2240 m²
E-COM	22456 ft²	2086 m²
AQIS	13660 ft²	1269 m²
OPTICAL LAB	2808 ft²	261 m²
Grand total: 5	128547 ft²	11942 m²

WET STORAGE AREA	ft²	m²
WET STORAGE CROSS DOCK	65454 ft²	6081 m²
FREEZER	27452 ft²	2550 m²
Grand total: 2		8631 m²

TRUCK DOOR DATA

NON-BONDED RECEIVING DOORS	TOTAL
DRY STORAGE RECEIVING DOORS	26
WET STORAGE RECEIVING DOORS	20
Grand total: 46	46

NON-BONDED KNOCKOUT RECEIVING DOORS	TOTAL
DRY STORAGE KNOCKOUT RECEIVING DOORS	19
WET STORAGE KNOCKOUT RECEIVING DOORS	4

NON-BONDED SHIPPING DOORS	TOTAL
DRY STORAGE SHIPPING DOORS	22
WET STORAGE SHIPPING DOORS	20
Grand total: 42	42

NON-BONDED KNOCKOUT SHIPPING DOORS	TOTAL
DRY STORAGE KNOCKOUT SHIPPING DOORS	23
WET STORAGE KNOCKOUT SHIPPING DOORS	5
Grand total: 28	28

TOTAL DOCKS	TOTAL
TOTAL DOCKS	139
Grand total: 139	139

PARKING DATA

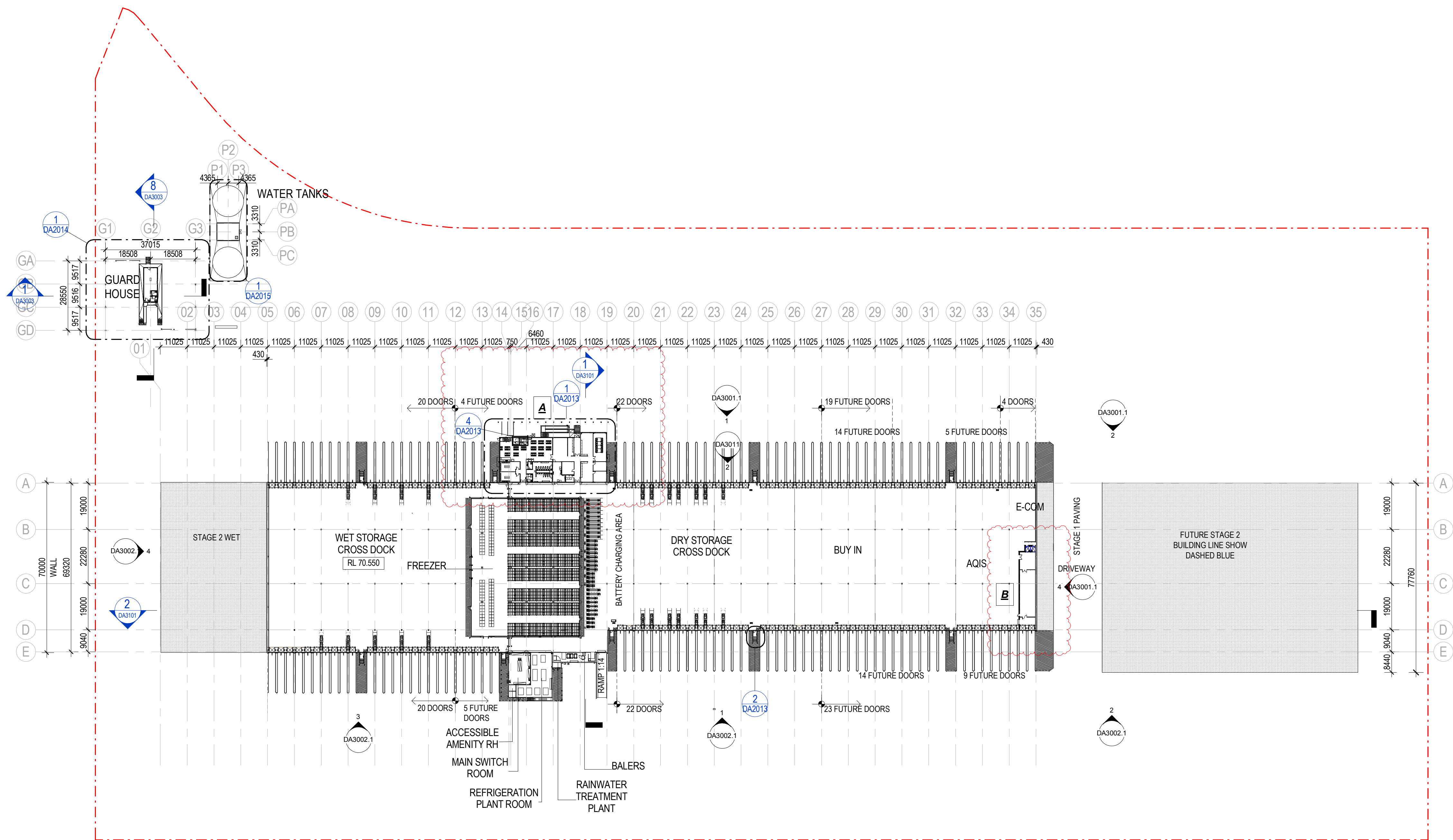
PARKING DATA	
STAGE 1 STAFF PARKING	232
STAGE 1 STAFF PARKING (ACCESSIBLE)	6
Grand total: 238	238

HARDSTAND

HARDSTAND	Area
STAGE 1 - HARDSTAND	66383 m²

EPJ & FORKLIFT CHARGER

EPJ & FORKLIFT CHARGER		
Item	DAY 1 COUNT	FUTURE COUNT
EPJ/ CHARGER DRY & WET	22	10
FORKLIFT/ CHARGER DRY AREA	20	8
FORKLIFT/ CHARGER WET AREA	13	5



1 GROUND FLOOR PLAN - DETAIL CALLOUT PLAN  
1:1000

LEGEND

- SITE BOUNDARY
- BUILDING AREA
- GFA PER COUNCIL DEFINITION
- INTERNAL WAREHOUSE AREA
- ▨ PEDESTRIAN PATH
- SEWER MAIN
- WATER MAIN
- STORM WATER PIT TO CIVIL ENGINEERS DETAIL
- STORM WATER JUNCTION PIT TO CIVIL ENGINEERS DETAIL
- ⊙ WATER QUALITY DEVICE TO CIVIL ENGINEERS DETAIL
- BUILDING SETBACK
- LANDSCAPE SETBACK
- STAGE 2 BUILDING LINE
- DIPLOMAT STYLE FENCE
- \*\*\*\*\* CHAIN MESH FENCE BY VENDOR
- \*\*\*\*\* BLACK PLASTIC CHAIN MESH FENCE
- UNDERGROUND RAINWATER REUSE TANK TO CIVIL ENGINEERS DETAIL
- LP LIGHTPOLE
- FUTURE FORKLIFTS/ CHARGERS - ALLOW FOR CABLE FEED IN ANTICIPATION OF CONNECTING TO CHARGERS IN THE FUTURE
- FORKLIFTS/ CHARGERS - ALLOW TO BRACKET MOUNT CHARGER OFF WALL OR COLUMN AS DETAILED
- DOCK DOOR OPENINGS WITH SECONDARY MOTORISED VENTILATION MESH SHUTTER OVER OPENING
- FUTURE EPJ/ CHARGER POSITION - PROVIDE CONDUIT WITH DRAW WIRE IN SLAB FOR FUTURE CONNECTION WHEN APPROPRIATE
- EPJ/ CHARGER MOUNTED ON DOUBLE CHARGER FLOOR STAND SUPPLIED BY COSTCO

AMENDMENTS LEGEND

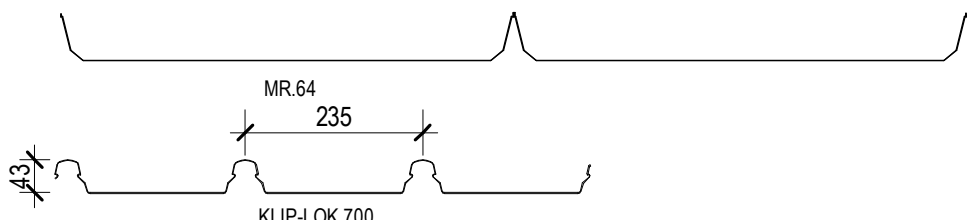
ITEM	DESCRIPTION
A	OFFICE LEVEL 1 REMOVED, OFFICE GROUND FLOOR AMENDED.
B	OFFICE FROM L01 RELOCATED TO THE NORTH WEST OF THE DRY DEPOT
C	CHANGES TO DATA



AMENDMENTS LEGEND

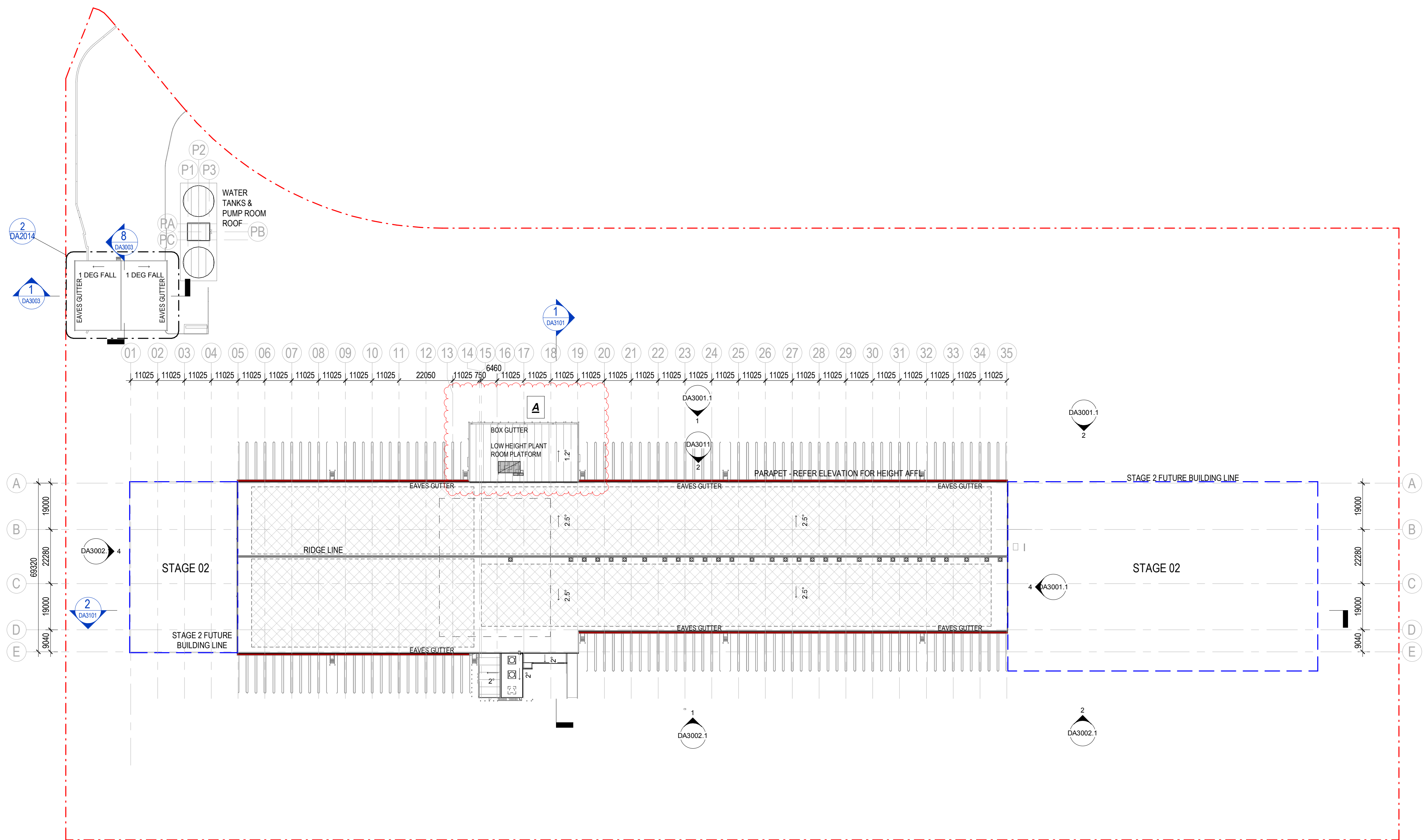
ITEM	DESCRIPTION
A	OFFICE LEVEL 1 REMOVED, OFFICE GROUND FLOOR AMENDED.
B	OFFICE FROM L01 RELOCATED TO THE NORTH WEST OF THE DRY DEPOT
C	CHANGES TO DATA

ROOF CLADDING PROFILE

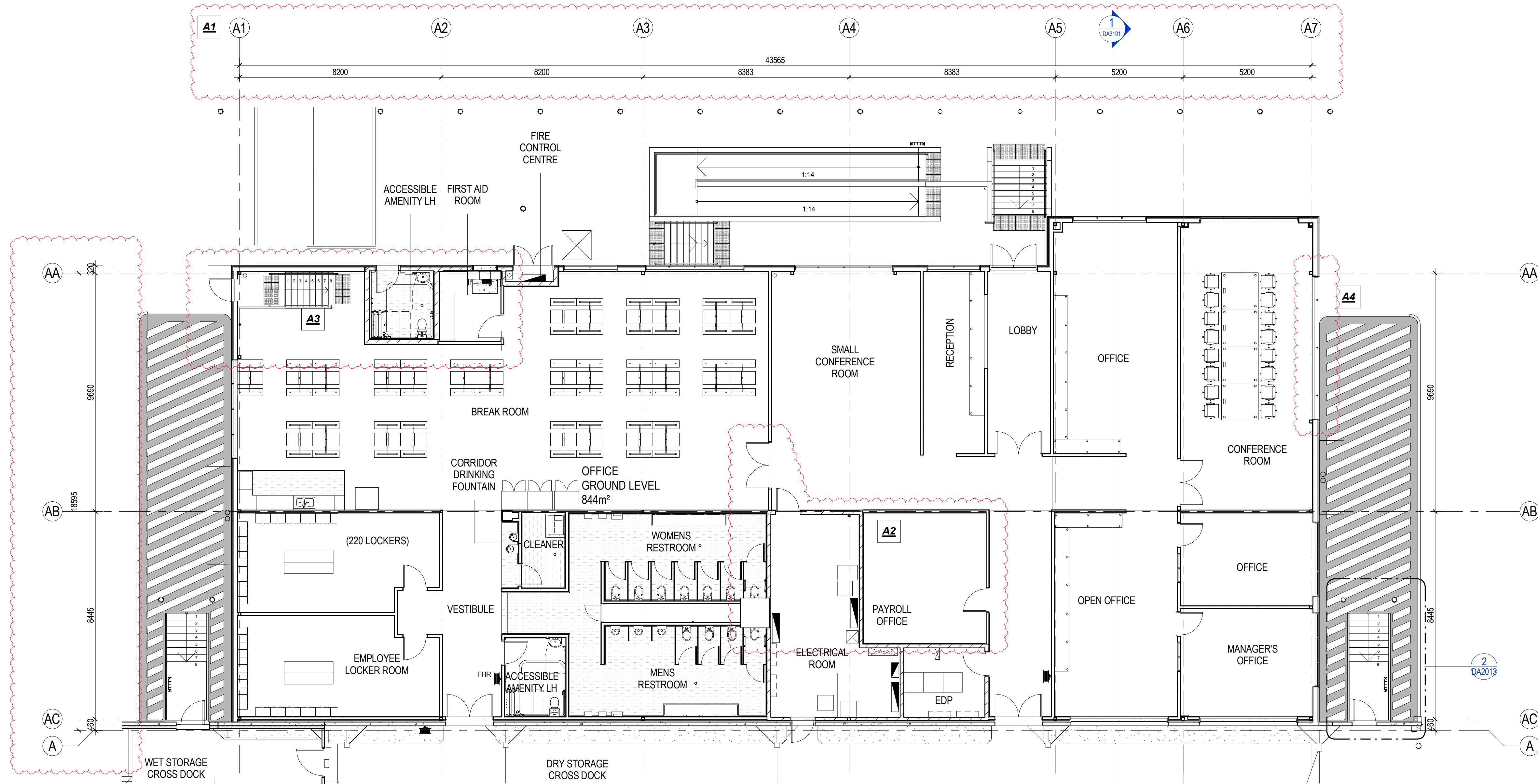


LEGEND

	HVAC UNIT
	AC UNIT
	COOLING TOWER
	ROTARY VENTILATION COWL
	EXHAUST FANS
	EXHAUST UNIT
	ROTARY VENTILATION COWL TO MECH ENGINEERS DETAIL
	BOX GUTTER SUMP WITH DOWNPIPE AND OVERFLOW TO HYD. ENG. DETAILS
	OVERFLOW THROUGH PARAPET
	ROOF HATCH
	SOLAR PANEL LOCATION, QUANTITIES, SPEC. AND DETAILS BY PHOTOVOLTAICS NOMINATED SUBCONTRACTOR.
EJ	EXPANSION JOINT OR HIGH POINT IN GUTTER
CU	COLLAR FLASHING TO STRUCTURAL STEEL COLUMN UNDER TO STRUCTURAL ENGINEERS DETAIL



1 ROOF PLAN  
1:1000



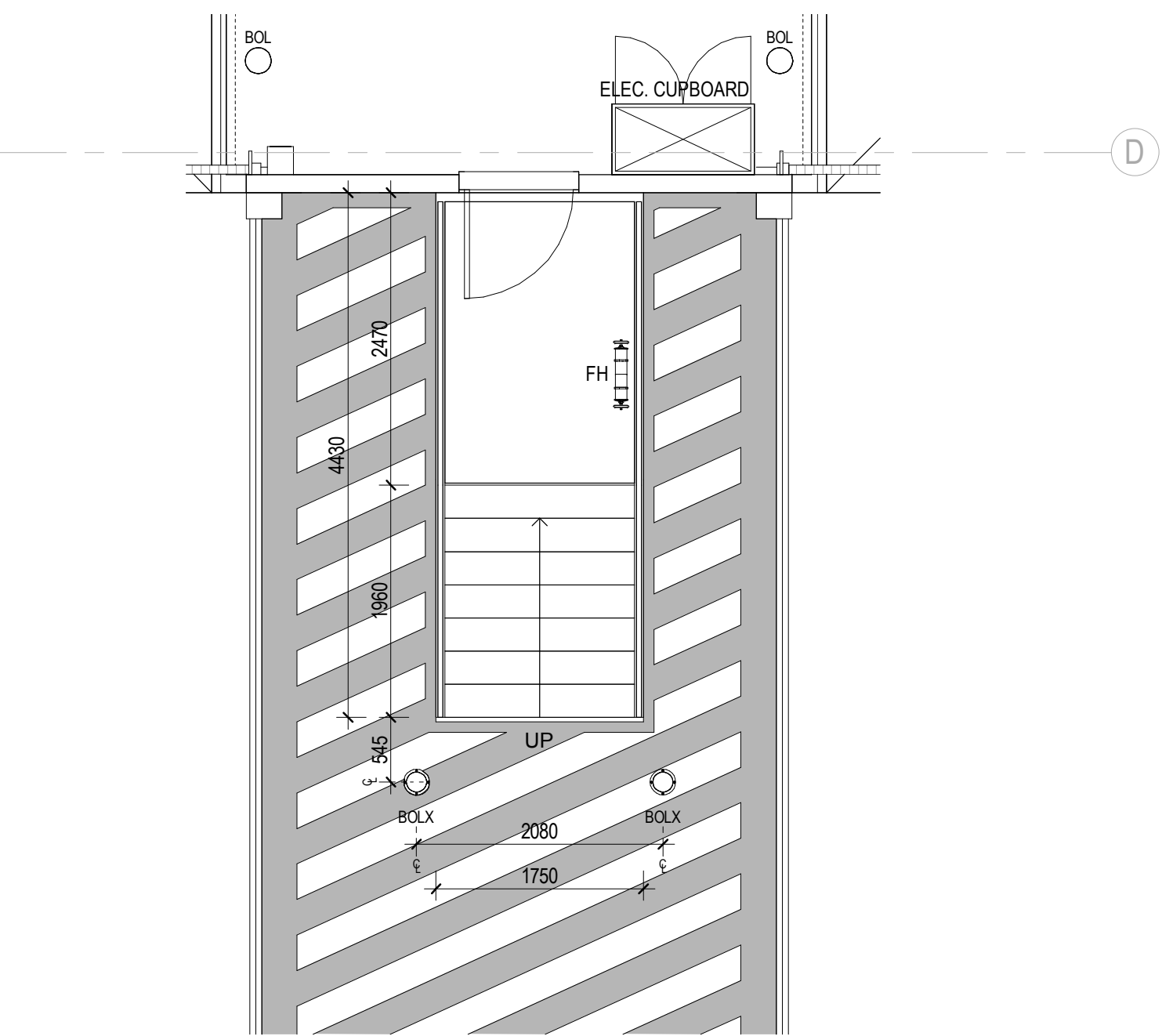
1 OFFICE - GROUND FLOOR  
1:100

# AMENDMENTS LEGEND

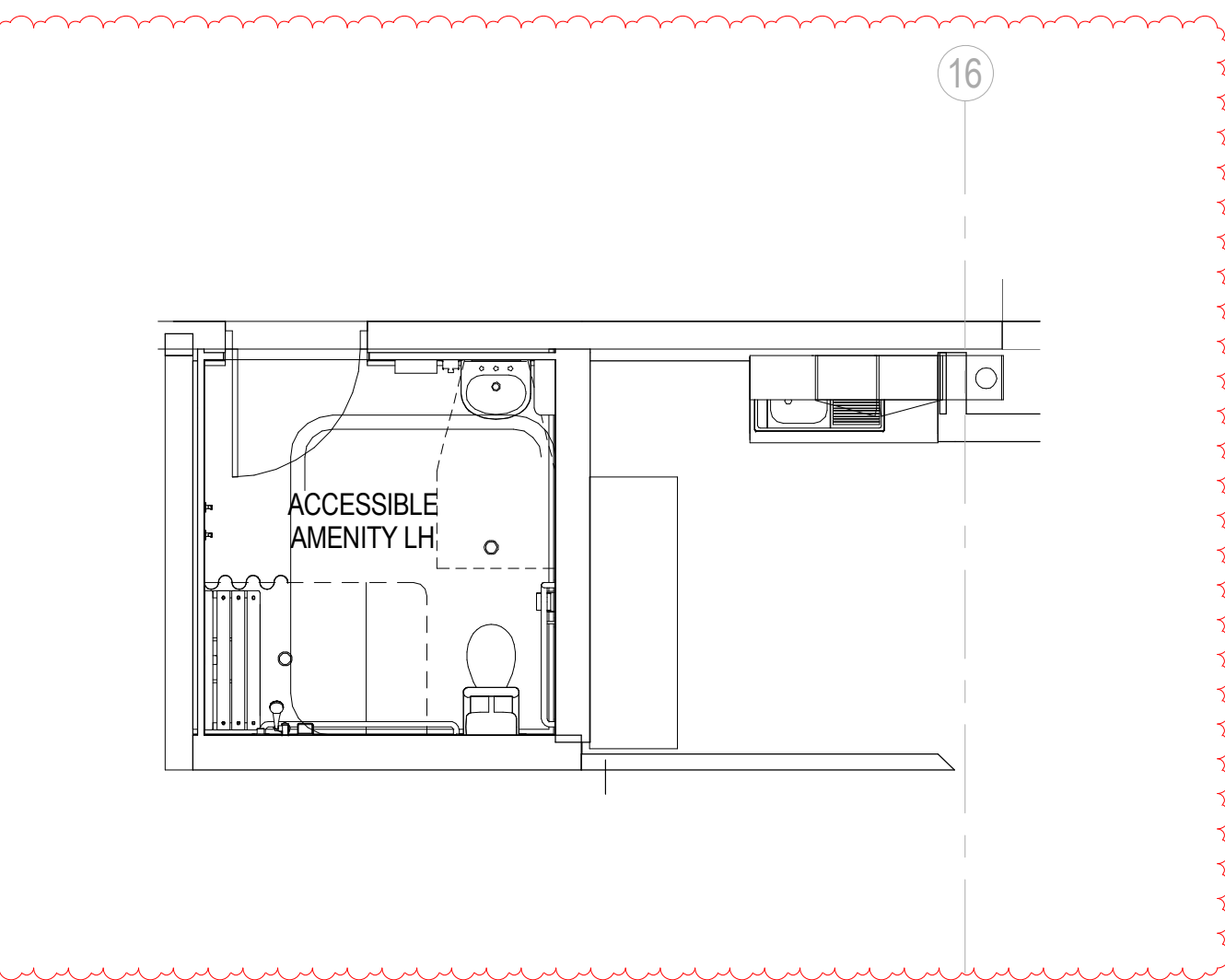
ITEM	DESCRIPTION
A	OFFICE LEVEL 1 REMOVED, OFFICE GROUND FLOOR AMENDED.
B	OFFICE FROM L01 RELOCATED TO THE NORTH WEST OF THE DRY DEPOT
C	CHANGES TO DATA

# AMENDMENTS LEGEND

ITEM	OFFICE - DESCRIPTION
A1	OFFICE GRIDS AND STRUCTURE AMENDED.
A2	LIFT AND STAIRS DELETED. ELECTRICAL ROOM AND PAYROLL OFFICE LAYOUT AMENDED.
A3	STAIRS AMENDED.
A4	WINDOW SIZE AMENDED.



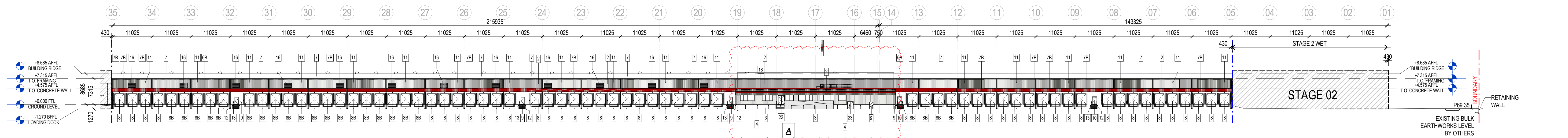
2 EXIT STAIRCASE (TYPICAL)  
1:50



4 AMENITY ROOM (TYPICAL)  
1:50

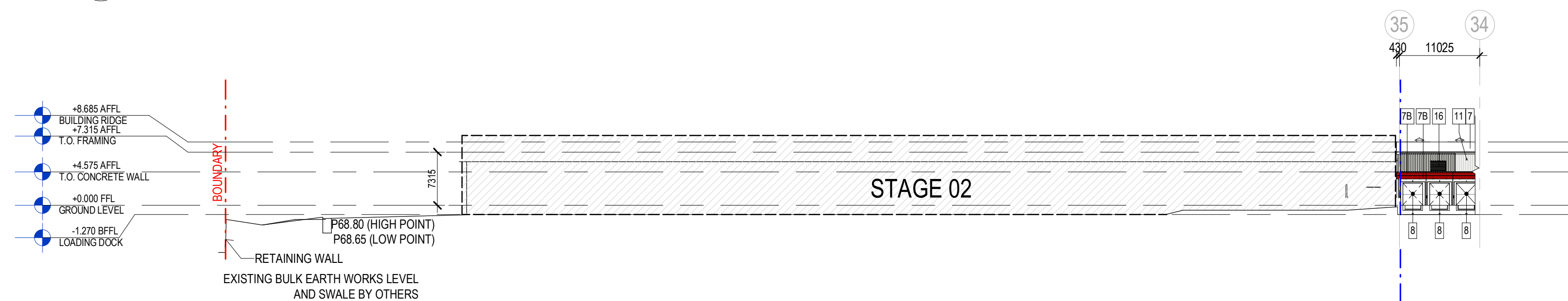
OFFICE FIRST FLOOR REMOVED





1 DA WEST ELEVATION (SOUTH END) STAGE 1

1: 500

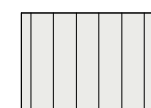


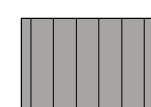
2 DA WEST ELEVATION (NORTH END) STAGE 1


1: 500

SCHEDULE - EXTERIOR FINISHES SCHEDULE					
CODE	ITEM	MATERIAL	FINISH	COLOUR	MANUFACTURER/NOTES
1	BUILDING WALLS				
1	COPING & GUTTER	METAL	PRE-FINISHED	AS SHADED. REFER COLOUR LEGEND.	BY MBS
2	UPPER WALL	METAL CLADDING	PRE-FINISHED VERTICAL RIB	AS SHADED. REFER COLOUR LEGEND.	BUTLER - RIB II BY MBS
3	LOWER WALL	CONCRETE WALL PANEL & CONC. BASE CLASS 1 FINISHED	SEALED	NATURAL	
4	OFFICE WALL	INSULATED TEXTURED METAL PANEL	PRE-FINISHED	AS SHADED. REFER COLOUR LEGEND.	METL SPAN TUFF CAST BY MBS
5	OFFICE CANOPY	METAL CLADDING	PRE-FINISHED VERTICAL RIB	AS SHADED. REFER COLOUR LEGEND. COLORBOND EVENING HAZE	BUTLER - RIB II
6	CANOPY FASCIA	METAL CLADDING	PRE-FINISHED	SAFETY RED SW4081	
7	ROOF				
7	MAIN BUILDING ROOF SHEETING	METAL ROOF PANEL	PRE-FINISHED	OFF WHITE	BUTLER MR.24
7B	TRUCK ROOF CANOPY	METAL PANEL	PRE-FINISHED	SAFETY RED SW4081 (COSTCO RED)	BUTLER MR. II BY MBS
8	DOORS				
8	DOCK DOORS	STEEL	PRE-FINISHED	WHITE	
8B	FUTURE DOCK DOOR	INITIALLY OFF FORM PRECAST CONCRETE - DOCK DOOR 8 IN FUTURE	SEALED	NATURAL	
9	EXIT DOORS (DRY)	METAL	PRE-FINISHED	WHITE	
10	EXIT DOORS (WET)	INSULATED DOOR	PRE-FINISHED	WHITE	
21	ROLLING SERVICE DOOR	METAL	PRE-FINISHED	TO MATCH ADJACENT WALL CLADDING. REFER COLOUR LEGEND.	
22	EXIT DOORS	METAL	PRE-FINISHED	WHITE	
23	GLASS ENTRANCE DOOR	METAL GLAZING			
4	BUILDING ELEMENTS				
11	WALL PACK LIGHTING FIXTURE				SEE ELECTRICAL DRAWINGS
12	BOLLARD	STEEL	PAINT	YELLOW	BY GC FIELD PAINT TYPICAL
13	FIRE HYDRANT	METAL			
15	HANDRAIL	STEEL	GALVANIZED		
16	LOUVER VENT	STEEL	PRE-FINISHED	TO MATCH ADJACENT WALL CLADDING. REFER COLOUR LEGEND.	
18	ACCENT STRIPE	STEEL	PAINT	SAFETY RED SW4081	BY MBS
Grand total: 301					

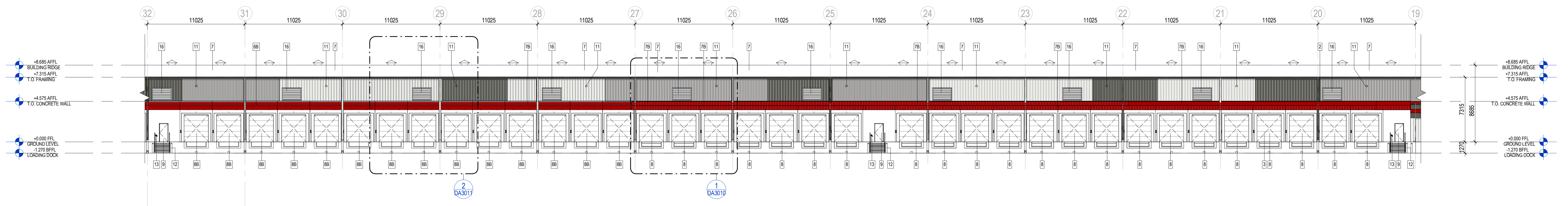
**COLOUR LEGEND**

 SURFMIST

 WINDSPRAY

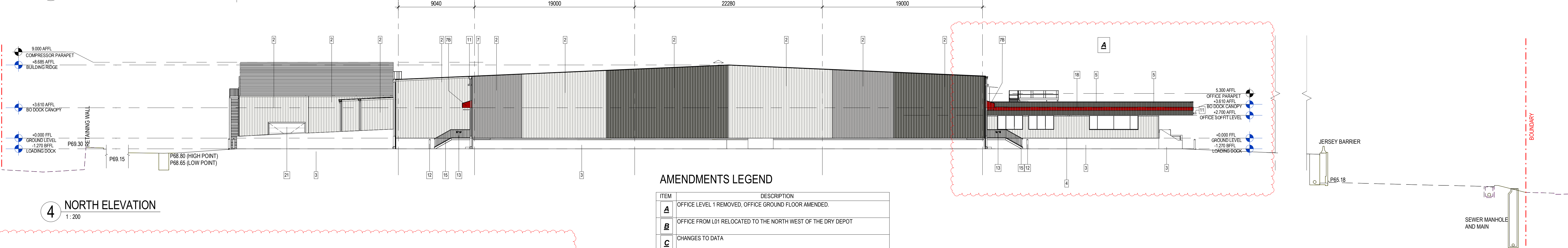
 WOODLAND GREY

**NOTE:**  
NON-BONDED KNOCKOUT DOOR TO BE PROGRESSIVELY ADDED AT THE DISCRETION OF COSTCO OVER THE NEXT FIVE YEARS OR SO



3 DA ENLARGED WEST ELEVATION STAGE 1

1: 200

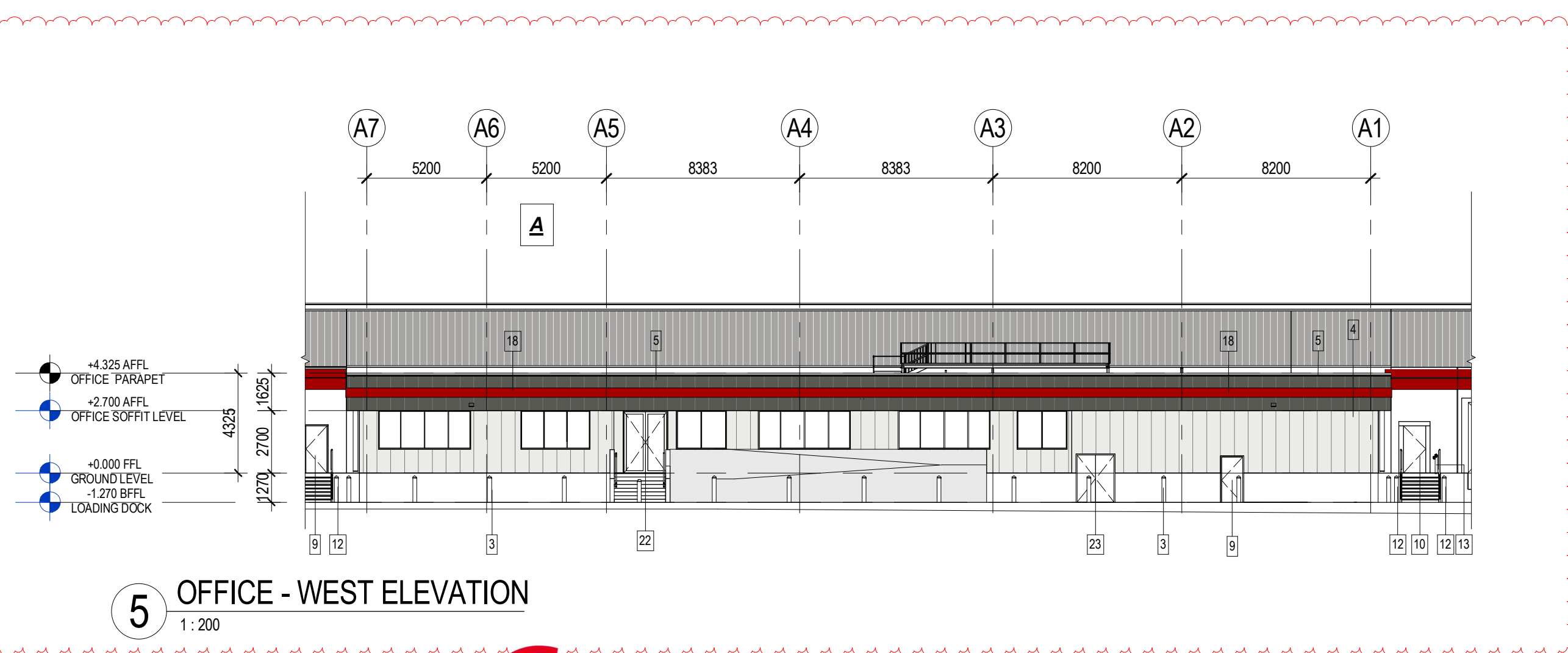


4 NORTH ELEVATION

1: 200

AMENDMENTS LEGEND

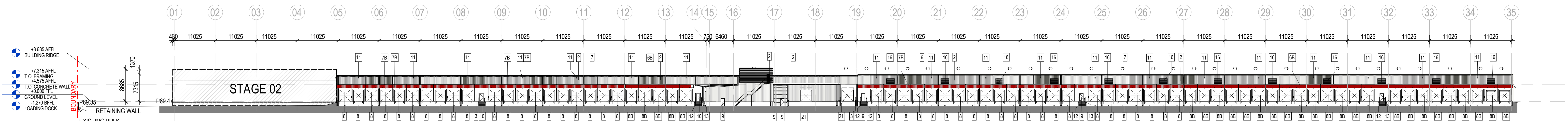
ITEM	DESCRIPTION
<b>A</b>	OFFICE LEVEL 1 REMOVED, OFFICE GROUND FLOOR AMENDED.
<b>B</b>	OFFICE FROM L01 RELOCATED TO THE NORTH WEST OF THE DRY DEPOT
<b>C</b>	CHANGES TO DATA



5 OFFICE - WEST ELEVATION

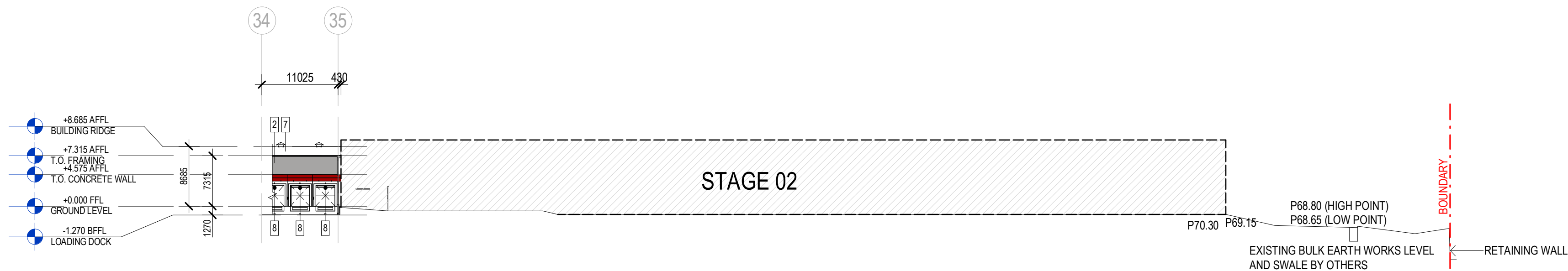
1: 200





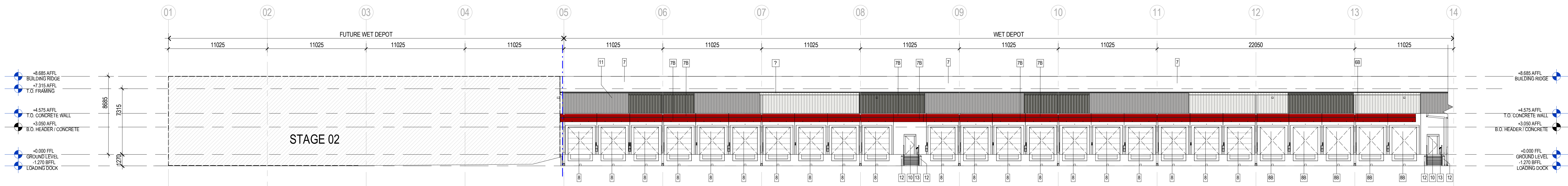
1 DA EAST ELEVATION (SOUTH END) STAGE 1

1:500



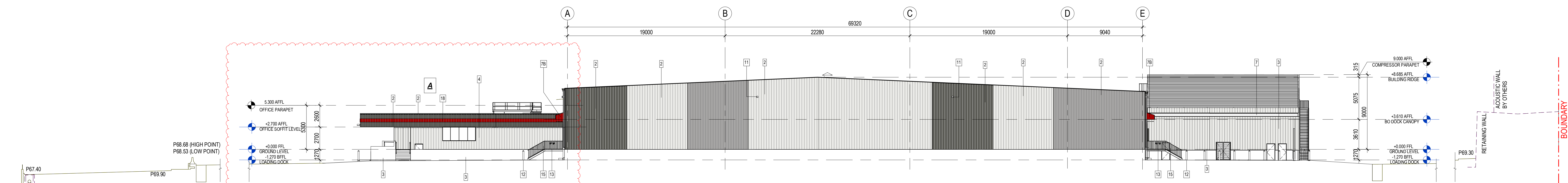
2 DA EAST ELEVATION (NORTH END) STAGE 1

1:500



3 DA ENLARGED EAST ELEVATION STAGE 1

1:200



4 SOUTH ELEVATION

1:200

#### AMENDMENTS LEGEND

ITEM	DESCRIPTION
A	OFFICE LEVEL 1 REMOVED, OFFICE GROUND FLOOR AMENDED.
B	OFFICE FROM L01 RELOCATED TO THE NORTH WEST OF THE DRY DEPOT
C	CHANGES TO DATA

SCHEDULE - EXTERIOR FINISHES SCHEDULE					
CODE	ITEM	MATERIAL	FINISH	COLOUR	MANUFACTURER/NOTES
1	BUILDING WALLS				
1	COPING & GUTTER	METAL	PRE-FINISHED	AS SHADED: REFER COLOUR LEGEND.	BY MBS
2	UPPER WALL	METAL CLADDING	PRE-FINISHED VERTICAL RB	AS SHADED: REFER COLOUR LEGEND.	BUTLER: RB 8 BY MBS
3	LOWER WALL	CONCRETE WALL PANEL & CONC. BASE CLASS 1 FINISHED	SEALED	NATURAL	
4	OFFICE WALL	INSULATED TEXTURED METAL PANEL	PRE-FINISHED	AS SHADED: REFER COLOUR LEGEND.	METL SPAN TUFF CAST BY MBS
5	OFFICE CANOPY	METAL CLADDING	PRE-FINISHED VERTICAL RB	AS SHADED: REFER COLOUR LEGEND. COLORBOND EVENING HAZE	BUTLER: RB 8
6	CANOPY FASCIA	METAL CLADDING	PRE-FINISHED	SAFETY RED SW4081	
2	ROOF				
7	MAIN BUILDING ROOF SHEETING	METAL ROOF PANEL	PRE-FINISHED	OFF WHITE	BUTLER MR.24
7B	TRUCK ROOF CANOPY	METAL PANEL	PRE-FINISHED	SAFETY RED SW4081 (COS7CO RED)	BUTLER MR. 8 BY MBS
3	DOORS				
8	DOCK DOORS	STEEL	PRE-FINISHED	WHITE	
8B	FUTURE DOCK DOOR	INITIALLY OFF FORM PRECAST CONCRETE - DOCK DOOR 8 IN FUTURE	SEALED	NATURAL	
9	EXIT DOORS (DRY)	METAL	PRE-FINISHED	WHITE	
10	EXIT DOORS (WET)	INSULATED DOOR	PRE-FINISHED	WHITE	
21	ROLLING SERVICE DOOR	METAL	PRE-FINISHED	TO MATCH ADJACENT WALL CLADDING. REFER COLOUR LEGEND.	
22	EXIT DOORS	METAL	PRE-FINISHED	WHITE	
23	GLASS ENTRANCE DOOR	METAL GLAZING			
4	BUILDING ELEMENTS				
11	WALL PACK LIGHTING FIXTURE				SEE ELECTRICAL DRAWINGS
12	BOLLARD	STEEL	PAINT	YELLOW	BY GC FIELD PAINT TYPICAL
13	FIRE HYDRANT	METAL			
15	HANDRAIL	STEEL	GALVANIZED		
16	LOUVER VENT	STEEL	PRE-FINISHED	TO MATCH ADJACENT WALL CLADDING. REFER COLOUR LEGEND.	
18	ACCENT STRIPE	STEEL	PAINT	SAFETY RED SW4081	BY MBS
Grand total: 301					

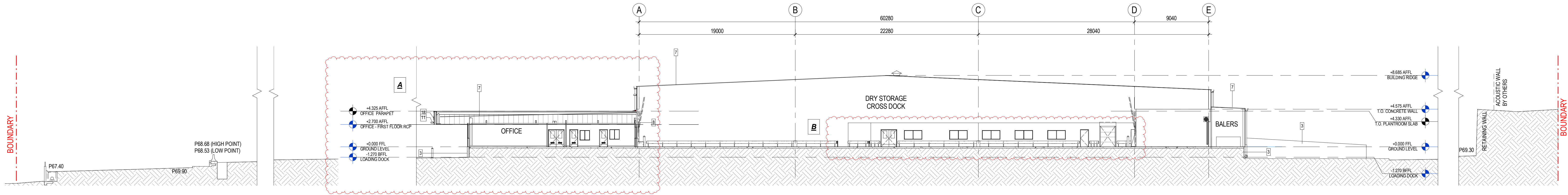
#### COLOUR LEGEND



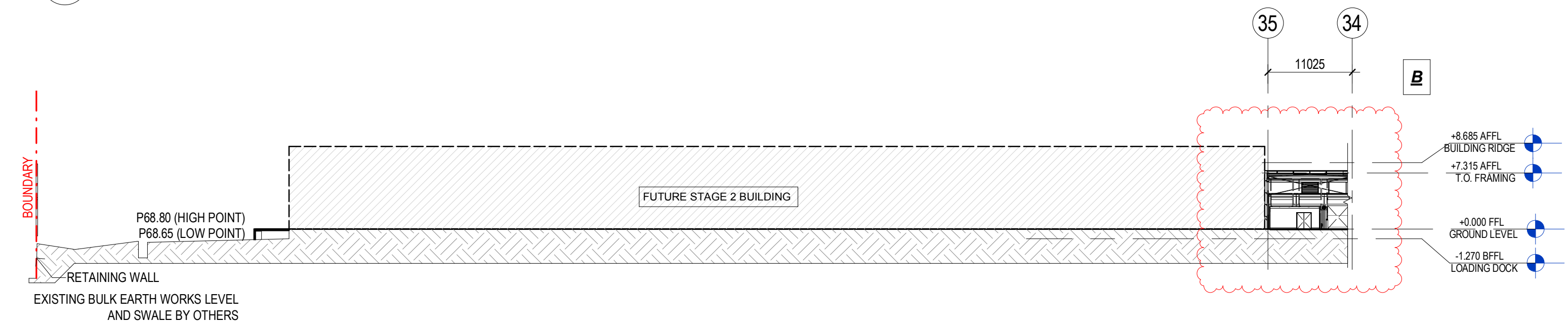
#### NOTE:

NON-BONDED KNOCKOUT DOOR TO BE PROGRESSIVELY ADDED AT THE DISCRETION OF COSTCO OVER THE NEXT FIVE YEARS OR SO

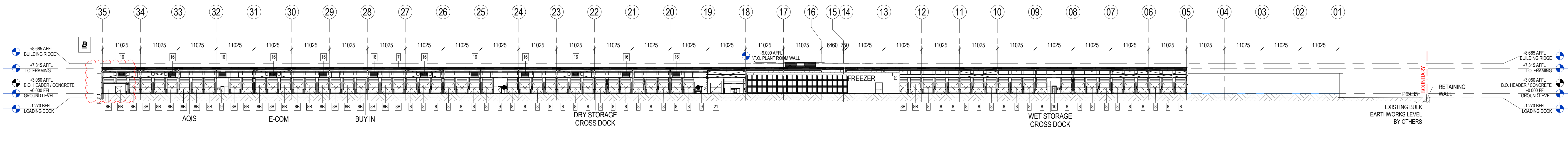




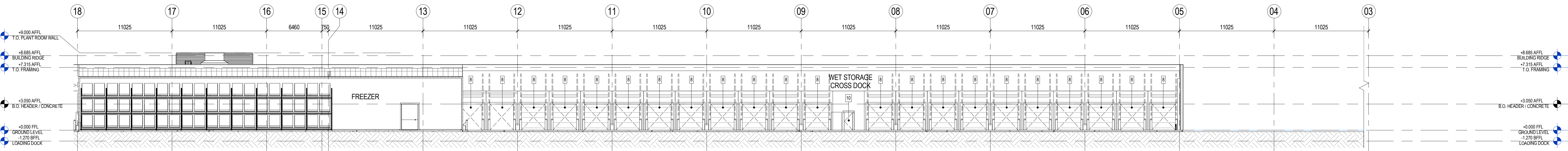
1 OVERALL SECTION 1  
1: 200



2 OVERALL SECTION 2 (NORTH END)  
1: 500



3 OVERALL SECTION 2 (SOUTH END)  
1: 500



4 ENLARGED SECTION 2  
1: 200

AMENDMENTS LEGEND

ITEM	DESCRIPTION
A	OFFICE LEVEL 1 REMOVED, OFFICE GROUND FLOOR AMENDED.
B	OFFICE FROM L01 RELOCATED TO THE NORTH WEST OF THE DRY DEPOT
C	CHANGES TO DATA

SCHEDULE - EXTERIOR FINISHES SCHEDULE					
CODE	ITEM	MATERIAL	FINISH	COLOUR	MANUFACTURER/NOTES
1 BUILDING WALLS					
1	CORNING & GUTTER	METAL	PRE-FINISHED	AS SHADED. REFER COLOUR LEGEND.	BY MBS
2	UPPER WALL	METAL CLADDING	PRE-FINISHED VERTICAL RIB	AS SHADED. REFER COLOUR LEGEND.	BUTLER - RIB II BY MBS
3	LOWER WALL	CONCRETE WALL PANEL & CONC. BASE CLASS 1 FINISHED	SEALED	NATURAL	
4	OFFICE WALL	INSULATED TEXTURED METAL PANEL	PRE-FINISHED	AS SHADED. REFER COLOUR LEGEND.	METL SPAN TUFF CAST BY MBS
5	OFFICE CANOPY	METAL CLADDING	PRE-FINISHED VERTICAL RIB	AS SHADED. REFER COLOUR LEGEND. COLORBOND EVENING HAZE	BUTLER - RIB II
6	CANOPY FASCIA	METAL CLADDING	PRE-FINISHED	SAFTEY RED SW4061	
2 ROOF					
7	MAIN BUILDING ROOF SHEETING	METAL ROOF PANEL	PRE-FINISHED	OFF WHITE	BUTLER MR.24
7B	TRUCK ROOF CANOPY	METAL PANEL	PRE-FINISHED	SAFETY RED SW4061 (COSTCO RED)	BUTLER MR. II BY MBS
3 DOORS					
8	DOCK DOORS	STEEL	PRE-FINISHED	WHITE	
8B	FUTURE DOCK DOOR	INITIALLY OFF FORM PRECAST CONCRETE - DOCK DOOR 8 IN FUTURE	SEALED	NATURAL	
9	EXIT DOORS (DRY)	METAL	PRE-FINISHED	WHITE	
10	EXIT DOORS (WET)	INSULATED DOOR	PRE-FINISHED	WHITE	
21	ROLLING SERVICE DOOR	METAL	PRE-FINISHED	WHITE	
22	EXIT DOORS	METAL	PRE-FINISHED	TO MATCH ADJACENT WALL CLADDING. REFER COLOUR LEGEND.	
23	GLASS ENTRANCE DOOR	METAL GLAZING			
4 BUILDING ELEMENTS					
11	WALL PACK LIGHTING FIXTURE				SEE ELECTRICAL DRAWINGS
12	BOLLARD	STEEL	PAINT	YELLOW	BY GC FIELD PAINT TYPICAL
13	FIRE HYDRANT	METAL			
15	HANDRAIL	STEEL	GALVANIZED		
16	LOUVER VENT	STEEL	PRE-FINISHED	TO MATCH ADJACENT WALL CLADDING. REFER COLOUR LEGEND	
18	ACCENT STRIPE	STEEL	PAINT	SAFTEY RED SW4061	BY MBS
Grand total: 301					