



LEGEND

- WATER DIVERSION BUND
- PROPOSED SEDIMENT POND
- GULLY TO BE FILLED IN
- EXISTING STOCKPILE TO BE UTILISED FOR FILL
- PROPOSED CONTOURS
- EXTENT OF EXPANSION AREA
- EXTENT OF WORKS
- BOUNDARY
- EASEMENT
- SEDIMENT FENCE

1:500 (A1) 1:1000 (A3) 0 5 10 15 20 25 30 35 40 45 50 m

ISSUE	REVISION	DATE	INITIAL
D	ISSUE FOR DA APPROVAL UPDATE	11.08.20	PS
D	ISSUE FOR 100% DA APPROVAL	06.08.20	PS
C	ISSUE FOR 95% DA APPROVAL	31.07.20	PS
B	ISSUE FOR 90% DA APPROVAL	27.07.20	PS
A	ISSUE FOR DA APPROVAL	15.05.20	PS




PRELIMINARY

© WSP Australia Pty Ltd. All rights reserved.  
These drawings, plans and specifications and the copyright therein are the property of WSP Australia Pty Ltd. and must not be used, reproduced or copied wholly or in part without the written permission of WSP Australia Pty Ltd.

FAIRFIELD SUSTAINABLE RESOURCE CENTRE  
WIDEMERE RD AND HASSELL ST

SEDIMENT AND EROSION  
CONTROL PLAN - SHEET 2 OF 3

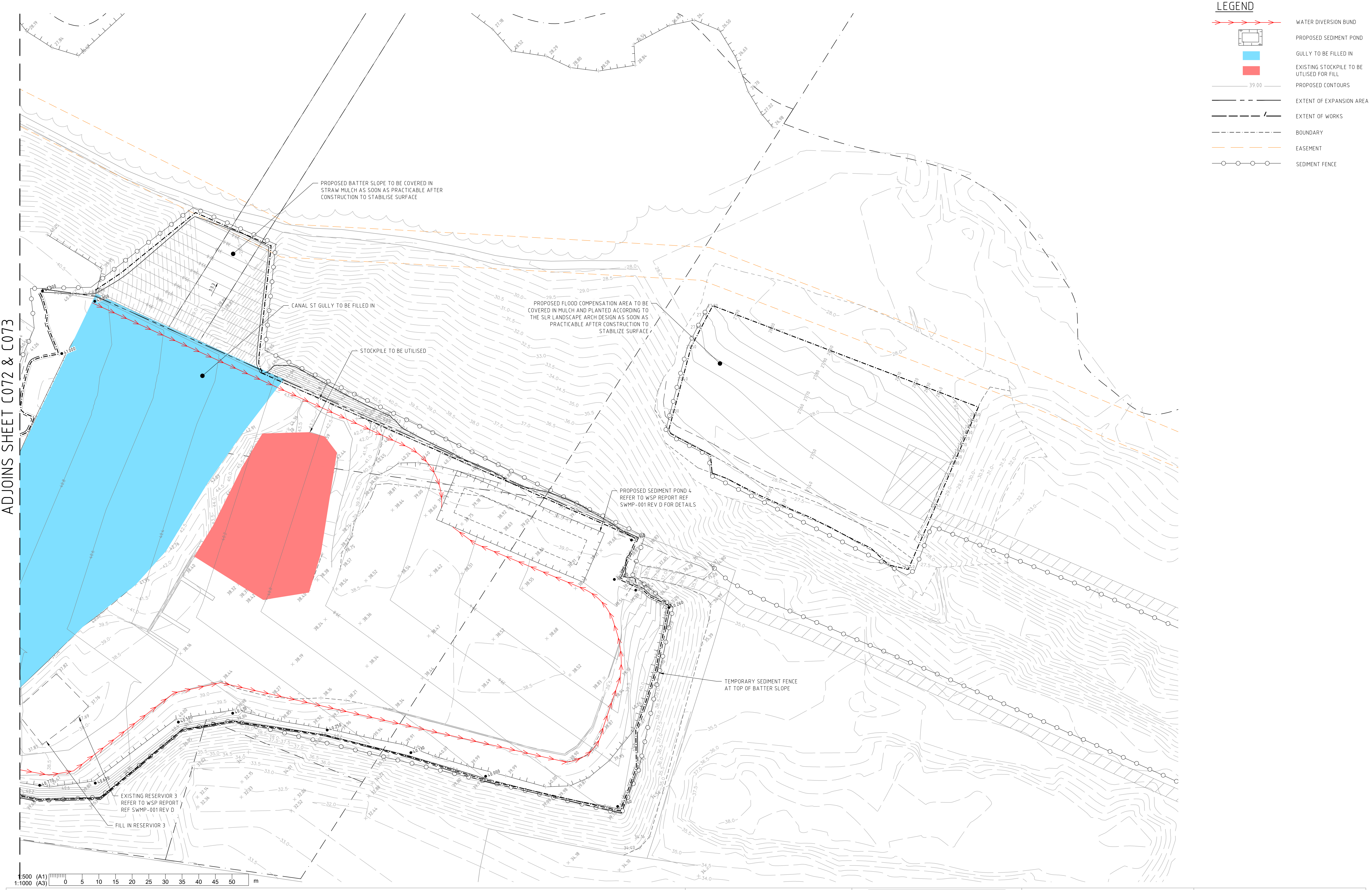
CIVIL DRAWING

Designed: PS	Approved: - STEVE NOVAK		 North Issue
Drawn: MR	Project Engineer/Director:	Date: 15/05/2020	
Scale: 1:500	Project No:	Drawing No:	
Date: APRIL 2020	PS102981	C072	

ADJOINS SHEET C073



ADJOINS SHEET C072 & C073



ISSUE	REVISION	DATE	INITIAL
D	ISSUE FOR DA APPROVAL UPDATE	11.08.20	PS
D	ISSUE FOR 100% DA APPROVAL	06.08.20	PS
C	ISSUE FOR 95% DA APPROVAL	31.07.20	PS
B	ISSUE FOR 90% DA APPROVAL	27.07.20	PS
A	ISSUE FOR DA APPROVAL	15.05.20	PS




PRELIMINARY

© WSP Australia Pty Ltd. All rights reserved.  
These drawings, plans and specifications and the copyright therein are the property of WSP Australia Pty Ltd. and must not be used, reproduced or copied wholly or in part without the written permission of WSP Australia Pty Ltd.

FAIRFIELD SUSTAINABLE RESOURCE CENTRE  
WIDEMERE RD AND HASSELL ST

SEDIMENT AND EROSION  
CONTROL PLAN - SHEET 3 OF 3

CIVIL DRAWING			
Designed: PS	Approved: - STEVE NOVAK	 North	Issue
Drawn: MR	Project Engineer/Director:		
Scale: 1:500	Project No:		
Date: APRIL 2020	Drawing No:		
PS102981		C073	E



TYPE A SEDIMENT BASIN MAINTENANCE NOTES:

1. INSPECT THE SEDIMENT BASIN DURING THE FOLLOWING PERIODS:
  - a. DURING CONSTRUCTION TO DETERMINE WHETHER MACHINERY, FALLING TREES, OR CONSTRUCTION ACTIVITY HAS DAMAGED ANY COMPONENTS OF THE SEDIMENT BASIN IF DAMAGE HAS REPAIRED, MAKE THE NECESSARY REPAIRS IMMEDIATELY.
  - b. AFTER EACH RUNOFF EVENT. INSPECT THE EROSION DAMAGE AT FLOW ENTRY AND EXIT POINTS. IF DAMAGE HAS REPAIRED, MAKE THE NECESSARY REPAIRS.
  - c. AT LEAST WEEKLY DURING THE WET SEASON, OTHERWISE FORTNIGHTLY PRIOR TO OR IMMEDIATELY AFTER PERIODS OF 'STOP WORK' OR SUITE 'SHUTDOWN'
2. CLEAN OUT ACCUMULATED SEDIMENT WHEN REACHES THE MARKER BOARD/POST, AND RESTORE THE ORIGINAL VOLUME. PLACE SEDIMENT IN A DISPOSAL AREA, OR IF APPROPRIATE MIX WITH SOILS ON SITE.
3. DO NOT DISPOSE OF SEDIMENT IN A MANNER THAT WILL CREATE AN EROSION OR POLLUTION HAZARD.
4. CHECK ALL VISIBLE PIPE CONNECTIONS FOR LEAKS AND REPAIR AS NECESSARY.
5. CHECK FILL MATERIAL IN THE DAM FOR EXCESSIVE SETTLEMENT, SLUMPING OF THE SLOPES OF PIPING BETWEEN THE CONDUIT AND THE EMBANKMENT, MAKE NECESSARY REPAIRS.
6. REMOVE ALL TRASH AND OTHER DEBRIS FROM THE BASIN AND RISER.

NOTES:

REFER TO WSP REPORT REF SWMP-001R REV A SECTION 9 FOR SITE INSPECTION AND MAINTENANCE INFORMATION



1:1500 (A1) 1:3000 (A3) 0 20 40 60 80 100 120 140 m

ISSUE	REVISION	DATE	INITIAL
D	ISSUE FOR DA APPROVAL UPDATE	11.08.20	PS
D	ISSUE FOR 100% DA APPROVAL	06.08.20	PS
C	ISSUE FOR 95% DA APPROVAL	31.07.20	PS
B	ISSUE FOR 90% DA APPROVAL	27.07.20	PS
A	ISSUE FOR DA APPROVAL	15.05.20	PS

**wsp**  
Sydney, NSW, Australia  
www.wsp.com


PRELIMINARY

© WSP Australia Pty Ltd. All rights reserved.  
These drawings, plans and specifications and the copyright therein are the property of WSP Australia Pty Ltd. and must not be used, reproduced or copied wholly or in part without the written permission of WSP Australia Pty Ltd.

FAIRFIELD SUSTAINABLE RESOURCE CENTRE  
WIDEMERE RD AND HASSELL ST

SEDIMENT AND EROSION  
CONTROL MAINTENANCE PLAN

CIVIL DRAWING

Designed: PS	Approved: - STEVE NOVAK	 North Issue
Drawn: MR	Project Engineer/Director: Date: 15/05/2020	
Scale: 1:1500	Project No: Drawing No:	
Date: APRIL 2020	PS102981 C075	

E