



ACOUSTIC COMPLIANCE MONITORING
WALLABIES V SAMOA
BANKWEST STADIUM
49.5374.R3:MCC

Prepared for: *Venues live.com.au*
Locked Bag 1999
SYDNEY OLYMPIC PARK NSW 2127

9 September 2019

CONTENTS

	<u>Page No</u>
1.0 Introduction	1
2.0 Monitoring Locations	1
3.0 Noise Monitoring Procedures	2
4.0 Measurement Results and Observations	2
5.0 Conclusion	3

APPENDICES

A	Site and Measurement Locations
B	Monitoring Results



1.0 INTRODUCTION

The purpose of this report is to present the results and findings of noise monitoring conducted during the Wallabies v Samoa Rugby Game. The game was held at Bankwest Stadium on Saturday 7 September 2019.

Bankwest Stadium is required to comply with an Operational Noise Management Plan (“ONMP”) prepared by Acoustic Logic for Venues NSW. The ONMP (ref 20190042.1/0608A/R5/TA dated 6 August 2019) sets out procedures for monitoring of sporting events and concerts.

The ONMP requires monitoring of two major sporting events per calendar year.

The occurrence of Rugby events at Bankwest Stadium on Saturday 7 September 2019 involved two matches in the evening. There was junior game held before the main game kick off at 7:30 pm.

The Acoustic Group was requested to conduct monitoring of the Rugby events between 5:30 pm and 9:30 pm.

The information contained in this Report has been prepared for the particular investigation described, and should not be used for any other purpose or in any other context.

2.0 MONITORING LOCATIONS

The Bankwest Stadium Operational Noise Management Plan requires monitoring to be assessed at a “residential” reference location on the north eastern corner of the intersection of O’Connell Street and Grose Street.

A second location for monitoring is on the southern side of the Grey-Headed Flying Fox Camp (north west of the Stadium) – see Appendix A.

In the event there are complaints concerning noise from Bankwest Stadium monitoring staff are required to attend to the complainant’s location.

The TAG personnel conducting noise monitoring outside Bankwest Stadium maintained contact by mobile phone with Bankwest Stadium staff.



3.0 NOISE MONITORING PROCEDURES

Monitoring of the event occurred at the two designated locations (shown in Appendix A) from 5:30 pm to 9:30 pm.

The sound level monitoring was conducted using a NATA Calibrated Brüel & Kjær Type 2250 Sound Level Meter (serial no. 3004338). The NATA Calibration of the meter is current.

The sound level meter was set to 'Fast' response and A-weighting. The reference level of the sound level meter was checked prior to, during and after measurements using Brüel & Kjær Sound Level Calibrator Type 4231, and remained at 94 ± 0.1 dB.

4.0 MEASUREMENT RESULTS AND OBSERVATIONS

Table 2 of the Operational Noise Management Plan requires for sporting events that the A-weighted maximum sound pressure level ($L_{A,max}$) of the amplified equipment at Bankwest Stadium shall not exceed 60 dB(A) when measured external to any residential premises in the absence of foreground traffic noise.

The note to Table 2 requires for the GHFF Camp that noise should not exceed 75-76 dB(A) with occasional spikes up to 84 dB(A).

Weather details during the monitoring were obtained from the Bureau of Meteorology Station at Sydney Olympic Park.

The weather during the monitoring of the sporting event was clear and cold (10 – 15 °C). At the commencement of the event, there were strong north-westerly winds which reduced in strength at around 7:30 pm.

Appendix B sets out the measurement results for the event.

At the residential reference location (Location 1), the acoustic environment was dominated by road traffic noise. Generally noise from the event was inaudible/barely audible at the reference location. At 8:12 pm, the PA System gave rise to a measured level of 58 dB(A) during a break in the road traffic on O'Connell Street.



Announcements over the PA system, amplified music and the operation of the siren could be detected at the Grey-Headed Flying Fox Camp (Location 2). The PA system gave rise to maximum noise levels from 56 – 70 dB(A), amplified music gave rise to maximum noise levels from 58 – 59 dB(A), and the operation of the siren gave rise to maximum noise levels from 61 – 64 dB(A). The live performance of the national anthem at 7:34 pm prior to the kick off of the main game gave rise to a maximum noise level of 68 dB(A) at Location 2.

5.0 CONCLUSION

Acoustic monitoring was conducted for the sporting event (Wallabies v Samoa) held at Bankwest Stadium from 5:30 pm – 9:30 pm on Saturday 7 September 2019.

The results of monitoring the event revealed noise levels less than the maximum noise limit of 60 dB(A) at the reference residential location (Location 1).

At the Grey-Headed Flying Fox Camp (Location 2) the PA announcements, music and operation of the sirens were below the nominated limit of 75-76 dB(A).

No complaints were received in relation to noise from the rugby event.

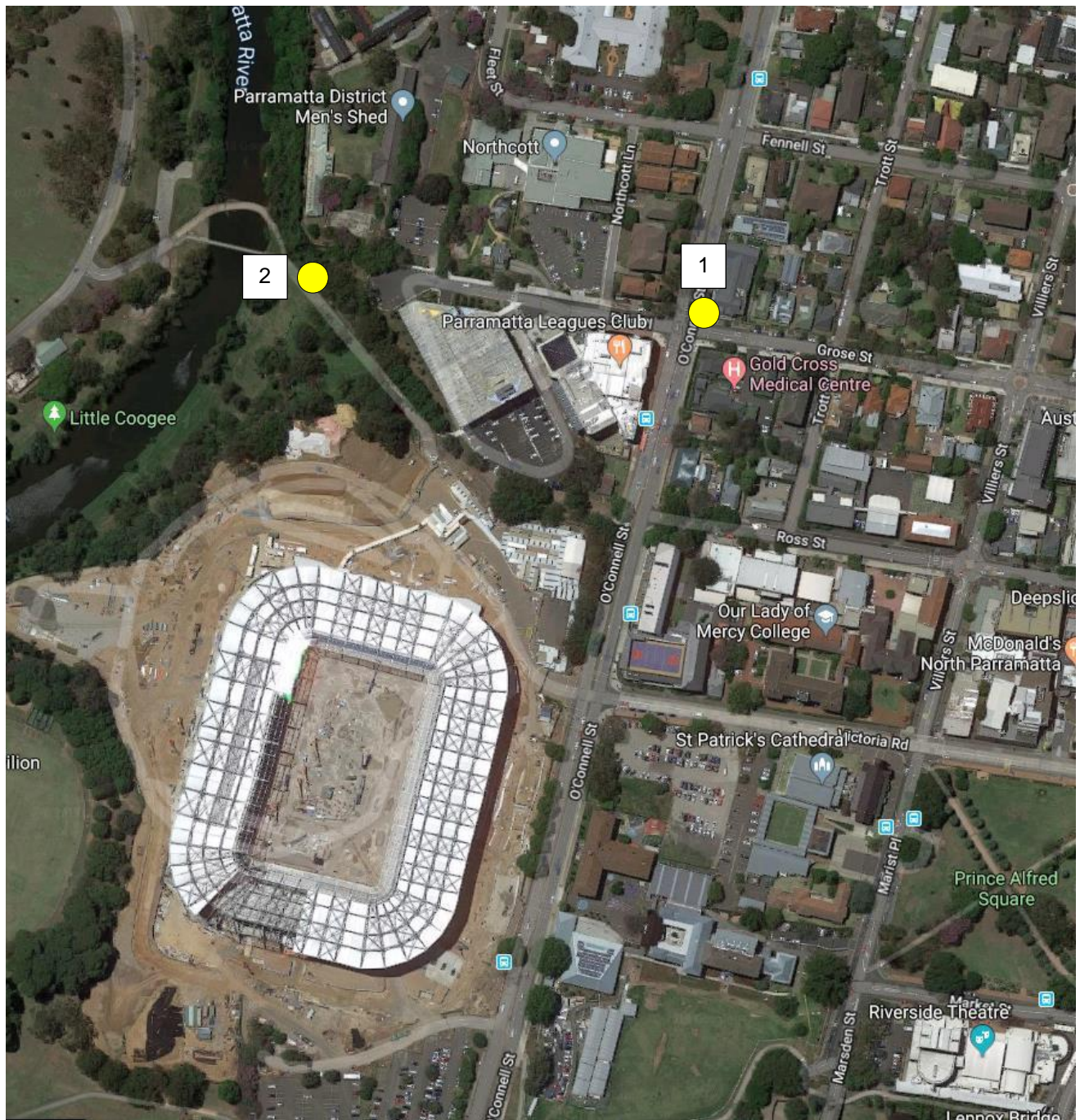
THE ACOUSTIC GROUP PTY LTD




CHRISTOPHER Y H CHAN



APPENDIX A: **Site and Measurement Locations**



 Reference Monitoring Locations



APPENDIX B: Monitoring Results

Measurement Results – Bankwest Stadium Monitoring – 7 September 2019
Operator Log – Wallabies vs Samoa
Survey By: CC

Time	Location	Bgn L _{A90}	Audibility	PA Max	Comments
17:30	BOM				Temp: 15 °C, Wind: WNW 17 km/h
17:31	2	50	BA		
17:44	2	48	A	56	
17:50	2	51	A		Siren maximum 64 dB(A)
17:58	1	63	NA		
18:00	BOM				Temp: 14 °C, Wind: WNW 17 km/h
18:06	1	62	NA		
18:15	1	58	NA		
18:28	2	51	A		Forecourt music maximum 58 dB(A)
18:30	BOM				Temp: 14 °C, Wind: WNW 17 km/h
18:32	2	51	A	61	Siren maximum 62 dB(A)
18:39	2	48	A	62	
18:49	1	58	NA		
18:58	1	60	BA		Music
19:00	BOM				Temp: 14 °C, Wind: WNW 15 km/h
19:07	1	59	BA		PA
19:18	2	52	A	69	
19:30	BOM				Temp: 13 °C, Wind: WNW 11 km/h
19:31	2	47	A	70	Music maximum 59 dB(A)
19:34	2	47	A		Live performance 68 dB(A)
19:47	1	60	NA		
19:56	1	62	NA		
20:00	BOM				Temp: 12 °C, Wind: WNW 7 km/h
20:12	1	57	A	58	
20:21	2	49	A		Siren maximum 61 dB(A)
20:30	2	50	A	60	
20:30	BOM				Temp: 10 °C, Wind: NW 4 km/h
20:49	1	63	NA		
21:03	2	48	A	61	
21:14	2	52	A	59	
21:28	2	50	A	70	

NA - not audible, BA - barely audible, A - audible, E – exceedance, BOM – Bureau of Meteorology, Sydney Olympic Park

