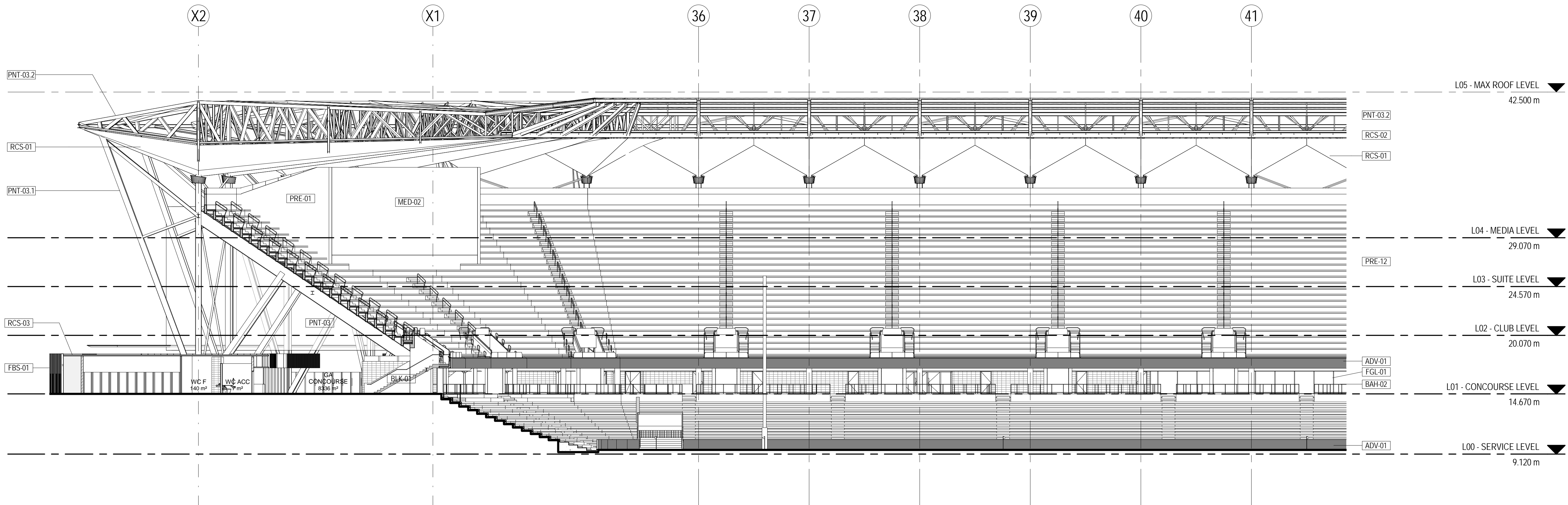
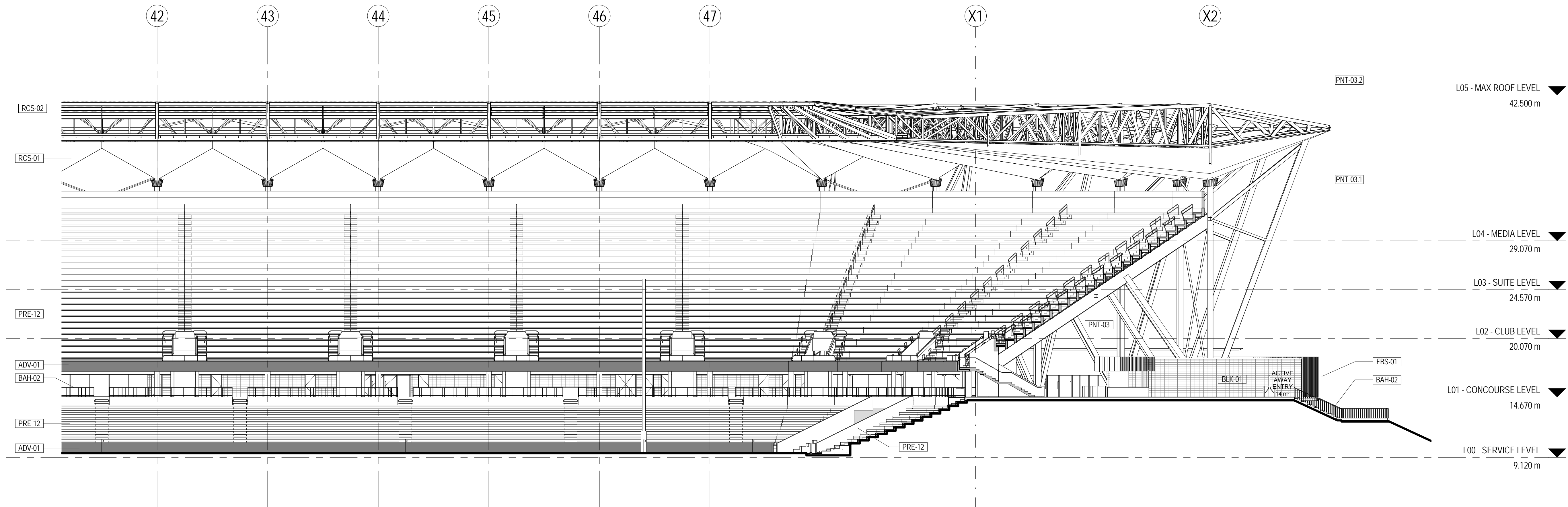


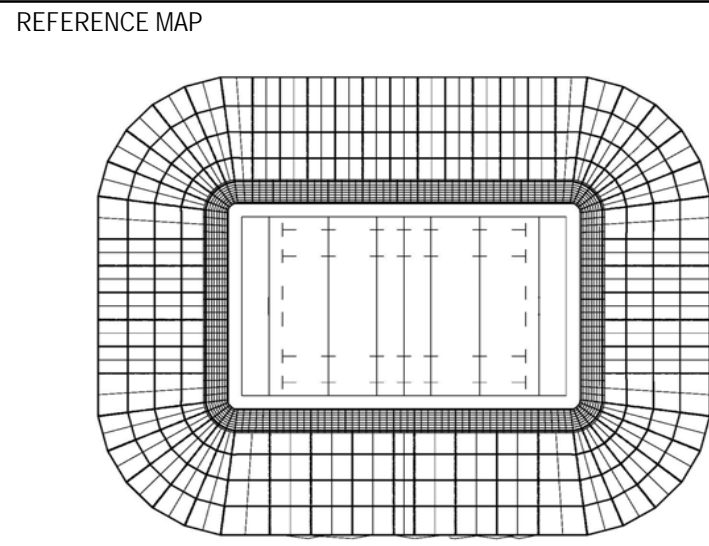
NOTE: REFER TO
LANDSCAPE DRAWINGS FOR
SOFT LANDSCAPE DESIGN



1 GA SECTION - PART NORTH
1 : 200



2 GA SECTION - PART SOUTH
1 : 200



STRUCTURAL, CIVIL & SERVICES ENGINEER:
aurecon

COST CONSULTANT:

LANDSCAPE ARCHITECT:
ASPECT Studios™

NOTES:
DRAWING HAS REPLACED 4.01.001

DISCLAIMER

USE FIGURED DIMENSIONS ONLY DO NOT SCALE FROM DRAWING CHECK & VERIFY ALL DIMENSIONS ON SITE BEFORE FABRICATION OR SET OUT.

This drawing is diagrammatic and shows general arrangements. Any information involving measurement of the works shall be taken from documented dimensions on the architectural and structural drawings, workshop drawings by others and conditions on site. The works shall comply with the contract conditions and Statutory Regulations.

All rights reserved. This work is copyright and cannot be reproduced or copied in any form or by any means graphic, electronic or mechanical, including photocopying without the written permission of Populous architects in association. Any licence, expressed or implied, to use this document for any purpose whatsoever is restricted to the terms of the agreement or implied agreement between Populous and the instructing party.

THIS DRAWING IS AN UNCONTROLLED COPY, UNLESS NOTED OTHERWISE.

REV	DESCRIPTION	DATE
1	FOR INFORMATION	03.02.2017
2	FOR INFORMATION	08.02.2017
3	FOR INFORMATION	10.02.2017
4	ISSUED FOR DA	17.02.2017
5	ISSUED FOR DA	21.02.2017
6	FOR INFORMATION	24.02.2017
7	ISSUED FOR DA	28.02.2017

ARCHITECT:

POPULOUS™

16/13/2017 (REV) 16/13/2017
SYDNEY

Suite 108
50 Great Buckingham Street
Parramatta, NSW 2150
AUSTRALIA
t: +61 (0) 2 8344 3460
f: +61 (0) 7 3839 9188

www.populous.com
E-mail: sport.au@populous.com

PROJECT
WEST SYDNEY STADIUM
PARRAMATTA

SHEET TITLE
GA SECTIONS
PART NORTH SOUTH

PROJECT NUMBER
16-7344-10
COORDINATED
NT
SCALE 100% @ AD
1 : 200

REVIEWED
AB
APPROVED
SG
NORTH POINT

PHASE
DD
DRAWING NUMBER
AD_4.01.001

REVISION
7

Original Sheet Size A0 - 1189 x 841mm