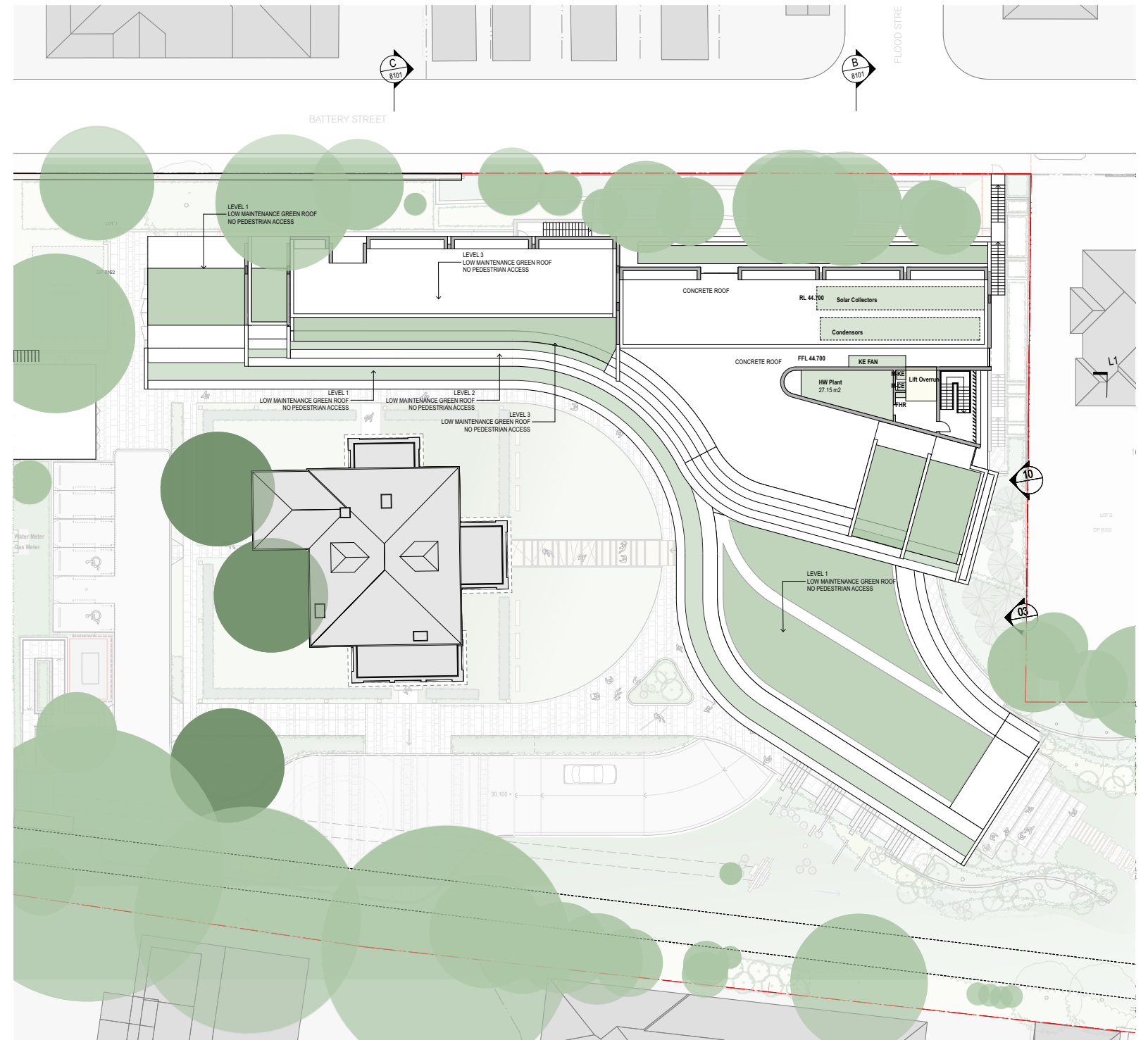


12.0 Roof Terraces

Rooftop spaces are proposed on Level 1 and Level 2 of the new development. The green spaces are intended to provide a visual connection to distant views to Gordons Bay and draw elements of the natural coastal setting into the site.

Proposed rooftop plant species will be native grasses and succulants suited to greenroof applications, tolerant of harsh conditions. Irrigation is proposed to these areas to ensure ongoing plant health in these exposed conditions. The landscaped areas are accessible for maintenance purposes only.



13.0 Tree Management

The Ents Tree Consultancy to complete an Arboricultural Impact Assessment for the proposed development site at the UNSW Cliffbrook Campus Coogee.

Existing trees on the, or adjacent to, the project site were inspected. The condition of trees and the likely impact of the proposed development were reported.

The report highlighted the location of the tree protection and structural root zones of existing trees. In particular, the retention of the existing trees along Battery Street is a key design principle of the project and the findings of the report led to the relocation of the Battery Street building line in order to retain these trees.

The arborist report was reviewed in light of the proposed landscape design and has informed the Tree Management Plan. During construction, any works within the Structural Root Zones of trees to be retained will be supervised by a qualified arborist.



- The diagram illustrates four types of trees and their status relative to a site boundary, represented by a solid black line at the top.

 - Tree 1:** A solid green circle with a black arrow pointing to its center, labeled "TREE ID#". To its right, the text reads "EXISTING SPOT LEVEL" and "PROPOSED SPOT LEVEL".
 - Tree 2:** A dashed black circle with a black arrow pointing to its center, labeled "TREE ID#". To its right, the text reads "EXISTING TREE TO BE RETAINED IN ACCORDANCE WITH ARBORICULTURAL ASSESSMENT".
 - Tree 3:** A dashed red circle. To its right, the text reads "STRUCTURAL ROOT ZONE".
 - Tree 4:** A dashed blue circle. To its right, the text reads "TREE PROTECTION ZONE".

