



**ecoplanning**  
ecology | planning | offsets

# Addendum Biodiversity Assessment Report



Lots 2 and 4 // DP 1151638, Lindfield Learning Village, Lindfield

---

Learning Village Refurbishment (SSD 8114) Stage 2 and 3

Prepared for: DesignInc Sydney Pty Ltd, on behalf of NSW Dept. of Education

22 April 2019 Version: 2.2 – Final

<b>PROJECT NUMBER</b>	2019-067			
<b>PROJECT NAME</b>	Addendum Biodiversity Assessment Report			
<b>PROJECT ADDRESS</b>	Lots 2 and 4 // DP 1151638, Lindfield Learning Village, Lindfield			
<b>PREPARED FOR</b>	DesignInc Sydney Pty Ltd, on behalf of NSW Dept. of Education			
<b>AUTHOR/S</b>	Brian Towle, Lucas McKinnon			
<b>REVIEW</b>	<b>Technical</b>	<b>QA</b>	<b>Version</b>	<b>Date to client</b>
	Lucas McKinnon		2.2 – Final	22 April 2020
<b>LICENCES</b>	<b>Scientific Licence</b>		SL101557	
	<b>Bionet Sensitive Species Data Licence</b>		1115	
	<b>Animal Research Authority Ethics Licence</b>		Fauna Surveys and Monitoring (16/346)	
	<b>Scientific Collection - Aquatic</b>		P19/0009-1.0 & OUT19/2602	

This report should be cited as: 'Ecoplanning (2020). Addendum Biodiversity Assessment Report– Lots 2 and 4 // DP 1151638, Lindfield Learning Village, Lindfield. Prepared for DesignInc Sydney Pty Ltd, on behalf of NSW Dept. of Education.'

*Disclaimer: This report has been prepared by Ecoplanning Pty Ltd for DesignInc Sydney Pty Ltd, on behalf of NSW Dept. of Education and may only be used for the purpose agreed between these parties, as described in this report. The opinions, conclusions and recommendations set out in this report are limited to those set out in the scope of works and agreed between these parties. Ecoplanning P/L accepts no responsibility or obligation for any third party that may use this information or for conclusions drawn from this report not provided in the scope of works or following changes occurring subsequent to the date that the report was prepared.*

ECOPLANNING PTY LTD | 74 HUTTON AVENUE BULLI NSW 2516 | P: (02) 4244 2736



ecoplanning

ecology | planning | offsets

## Contents

1	Introduction.....	5
1.1	Location and site identification.....	6
2	Biodiversity considerations.....	12
2.1	Landscape features .....	12
2.2	Native vegetation .....	12
2.2.1	Current and future vegetation scores .....	13
2.3	Threatened Species.....	16
2.4	Avoid and minimise impacts on biodiversity values.....	16
3	Impact summary.....	17
3.1	Thresholds for assessment and offsetting of unavoidable impacts of development .....	17
3.2	Ecosystem credits and species credits.....	17
3.2.1	Change in landscape value score .....	17
3.2.2	Current and future site value score .....	17
3.2.3	Required ecosystem credits .....	18
3.2.4	Required species credits .....	18
4	Biodiversity Credit Report .....	19
4.1	Credit profiles .....	19
4.1.1	Ecosystem credits.....	19
4.1.2	Species credits .....	19
4.2	Biodiversity Offset Strategy.....	20
5	References .....	22

## Figures

Figure 1.1:	Subject site location .....	7
Figure 1.2:	Site map .....	8
Figure 1.3:	Stage 1 development footprint previously assessed and offset.....	9
Figure 1.4:	Base Plan of modifications proposed for Stages 2 and 3 of Lindfield Learning Village, showing location of impacts to native vegetation (Source: DesignInc).....	10
Figure 1.5:	Stage 2 and 3 Proposed development footprint.....	11
Figure 2.1:	Field validated vegetation .....	14
Figure 2.2:	Field validated vegetation and proposed footprint .....	15
Figure 4.1:	Screenshot from Biodiversity Offsets Payment Calculator (14 April 2020) .....	21



## Tables

Table 2.1: Vegetation types and zones, a description and the total area within the development site..... 12

Table 2.2: Site value scores before and after development..... 13

Table 3.1: Landscape score components. .... 17

Table 3.2: Site values before and after development, including ecosystem credit requirements ..... 18

Table 4.1: Ecosystem credits summary and credit profiles ..... 19

Table 4.2: Credit requirements for Stages 2-3 and credits already retired as part of Stage 1..... 20

## Glossary and abbreviations

Acronym	Description
APZ	Asset Protection Zone
BAR	Biodiversity Assessment Report
BCF	Biodiversity Conservation Fund
BCT	Biodiversity Conservation Trust
BOPC	Biodiversity Offsets Payment Calculator
DPE	NSW Department of Planning and Environment
EEC	Endangered Ecological Community
EPBC Act	Commonwealth <i>Environment Protection and Biodiversity Conservation Act 1999</i>
FBA	Framework for Biodiversity Assessment
IBRA	Interim Bioregionalisation of Australia
IPA	Inner Protection Area
LPI	Land and Property Information
NSW SC	New South Wales Scientific Committee
OEH	NSW Office of Environment and Heritage
PCT	Plant community type, as defined by OEH (2017)
RFS	Rural Fire Services
SEARs	Secretary's Environmental Assessment Requirements
SIX	Spatial Information exchange
SSD	State Significant Development
TEC	Threatened Ecological Community
TSC Act	NSW Threatened Species Conservation Act 1995





# 1 Introduction

This Addendum Biodiversity Assessment Report (BAR) has been prepared by Ecoplaning on behalf of the NSW Department of Education and School Infrastructure NSW (the Applicant). It accompanies a Response to Submissions Report in support of State Significant Development Application (SSD 16\_8114) for Lindfield Learning Village (the site; **Figure 1.1** and **Figure 1.2**).

On 24 October 2018 the Minister for Planning granted partial development consent to SSD 8114 for Phase 1 construction and operation of a new school for 350 students. The remainder of SSD 8114 (as originally proposed) has not yet been granted consent and has been subject to further investigation, assessment and engagement with the relevant agencies (DPE, RFS, OEH, RMS, TfNSW) and Council.

The Response to Submissions and supporting documents seek approval for the remainder of SSD 8114, being:

Phase 2(b):

- Works to accommodate 1,050 students (including the approved 350 in Phase 1 and 35 in the modification to Phase 1).
- Repurposing of the Phase 1 area.
- An extended driveway for car and bus access within the eastern portion of the site from Eton Road. A fire trail linking the new extended driveway to Dunstan Grove is proposed for access by emergency vehicles.

Phase 3:

- Works to accommodate an additional 950 students in the western wing of the building.

The SSD does not seek approval for vegetation management outside the site boundary. Any vegetation management outside the site boundary is the subject of separate approval.

The proposed development is considered a State Significant Development (SSD), and as such Secretary's Environmental Assessment Requirements (SEARs) were issued by the Department of Planning and Environment (DPE). The SEARs state the following regarding the assessment of biodiversity impacts:

*Biodiversity impacts related to the proposed development are to be assessed and documented in accordance with the Framework for Biodiversity Assessment, by a person accredited in accordance with section 142B(1)(c) of the Threatened Species Conservation Act 1995.*

A BAR which satisfies the SEARs has been prepared for Stage 1 by Lucas McKinnon (Ecoplaning 2018), an Accredited BioBanking Assessor (No. 76) under Part 7A of the NSW *Threatened Species Conservation Act 1995*, and consistent with the Framework for Biodiversity Assessment (FBA) (OEH 2014). This BAR addendum has also been prepared by Lucas McKinnon and also satisfies the requirements of the SEARs.

The purpose of this addendum BAR addendum is to assess additional impacts to biodiversity associated with Phases 2 and 3 of construction, noting that impacts associated with Phase 1 of construction have already been assessed and offset in accordance with the FBA (**Figure 1.3**). However, Phases 2 and 3 of construction would involve additional vegetation clearing across a small area of the subject site to allow for the construction of an extended driveway around the eastern and southern portion of the site for emergency vehicles, buses and drop off and pick up vehicles, and modification to the groundlayer due to landscaping (**Figure 1.4**). These works relate to the revised vehicle access arrangements in response to the submissions received from agencies and the community during the exhibition of Phases 2 and 3. Assessment of impacts to biodiversity values within the area of the proposed extended driveway were partially assessed as part of the BAR for Stage 1.

This addendum BAR assesses only the additional impacts of phases 2-3 (**Figure 1.5**), whilst noting that the majority of impacts have already been assessed, approved and offset as part of Stage 1.

Sources of information for this report included:

- NSW Planning Viewer (NSW Dept. of Planning and Environment 2017)
- BioNet Atlas of NSW Wildlife (NSW Office of Environment and Heritage 2017)
- Protected Matters Search Tool (Commonwealth Dept. of the Environment and Energy 2017)
- Native vegetation of the Sydney Metropolitan Catchment Management Authority (OEH 2016)
- Soil Landscapes of the Sydney 1:100,000 Sheet map and report, Soil Conservation Service of NSW, Sydney (Chapman et al 2009)
- SIX Maps (LPI 2017)
- Bushfire Assessment Report. s.100B 'Special Fire Protection Purpose'. Lot 2 & 4 DP 1151638, Lindfield Learning Village, Eton Road, Lindfield NSW. Prepared for Dept. of Education (v 2.1) (ABPS 2017).
- Kleinfelder (2018). Landscape Management Plan. Lindfield Learning Village Eton Road, Lindfield NSW. Prepared for DesignInc Pty Ltd
- Vegetation Management Strategy (Alphitonia 2016)

## 1.1 Location and site identification

The subject site for this BAR covers a total area of 4.78 ha and consists of lots 2 and 4 // DP 1151638, Eton Road, Lindfield (**Figure 1.1**). The subject site includes the full extent of the planned building refurbishment works (Lot 2 // DP 1151638 – 0.38 ha) and the established APZ that surrounds the Lindfield Learning Village site (Lot 4 // DP 1151638) (**Figure 1.2**). The subject site is bounded by Lane Cover River National Park to the south, east and west, and existing development to the north. Additional information regarding the topography, site history and site context are provided within the Stage 1 BAR (Ecoplanning 2018).

**Figure 1.3** outlines areas assessed as part of Stage 1, while the proposed development footprint including Stages 2 and 3 is shown in **Figure 1.4** and **Figure 1.5**.



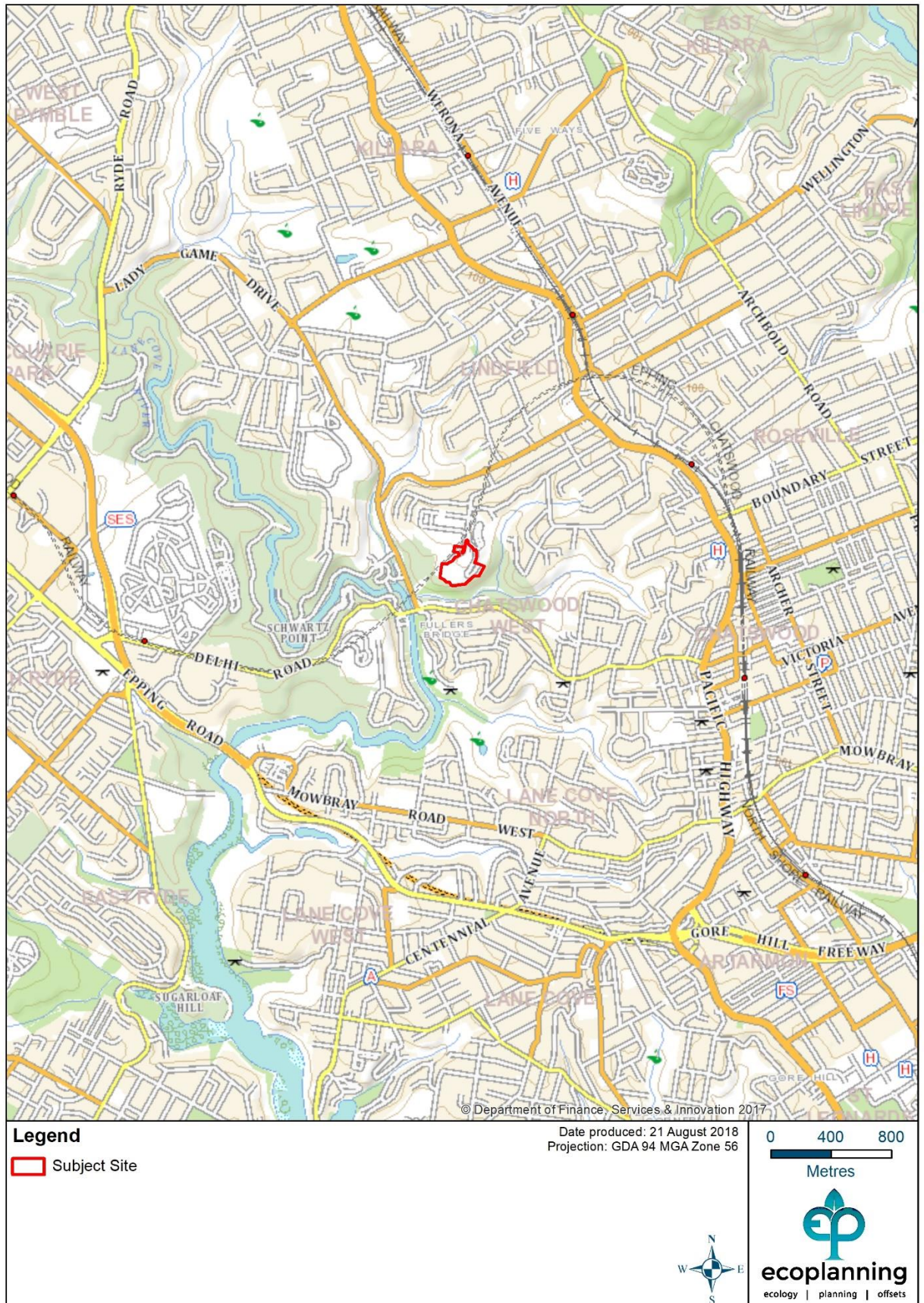


Figure 1.1: Subject site location



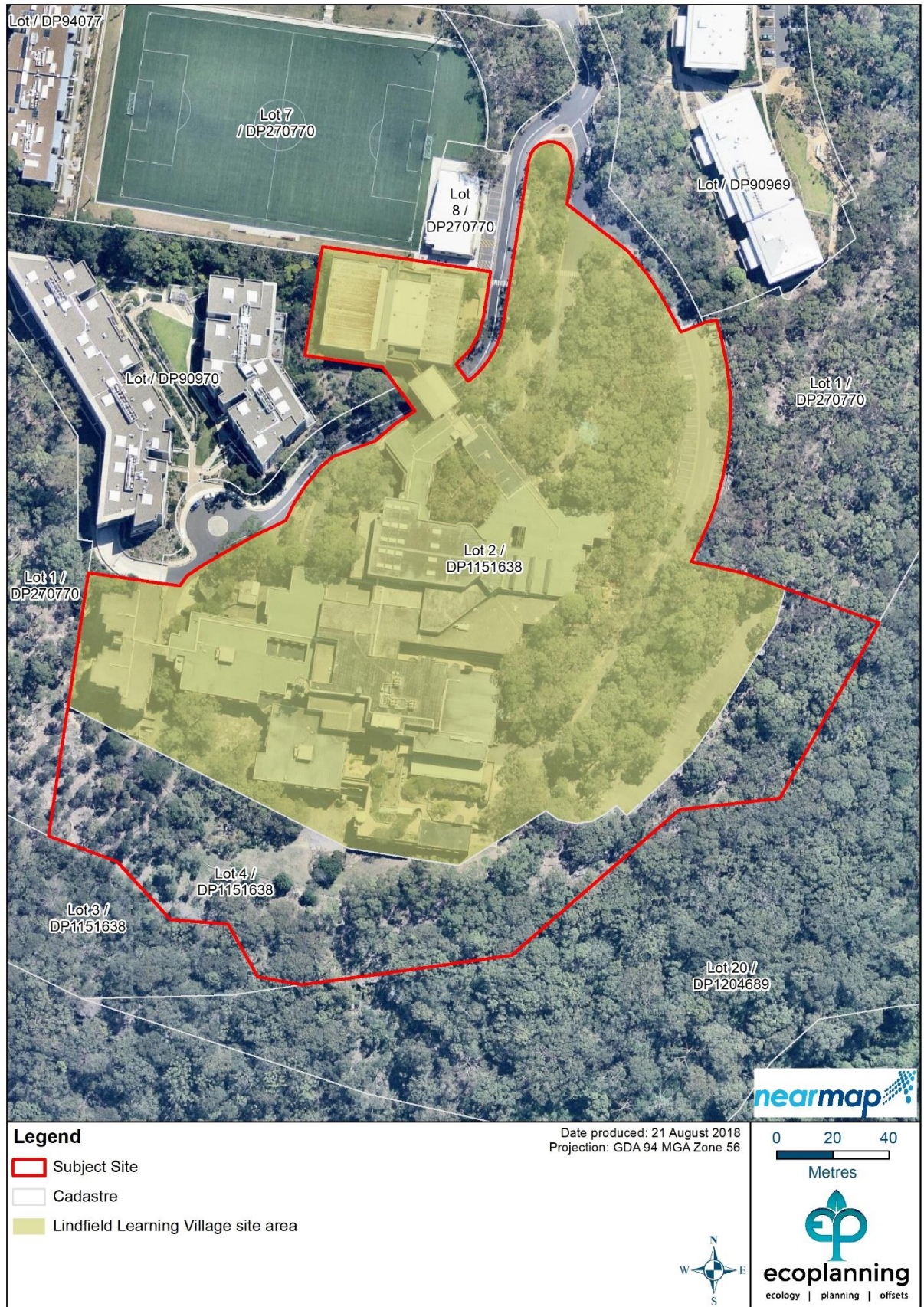


Figure 1.2: Site map



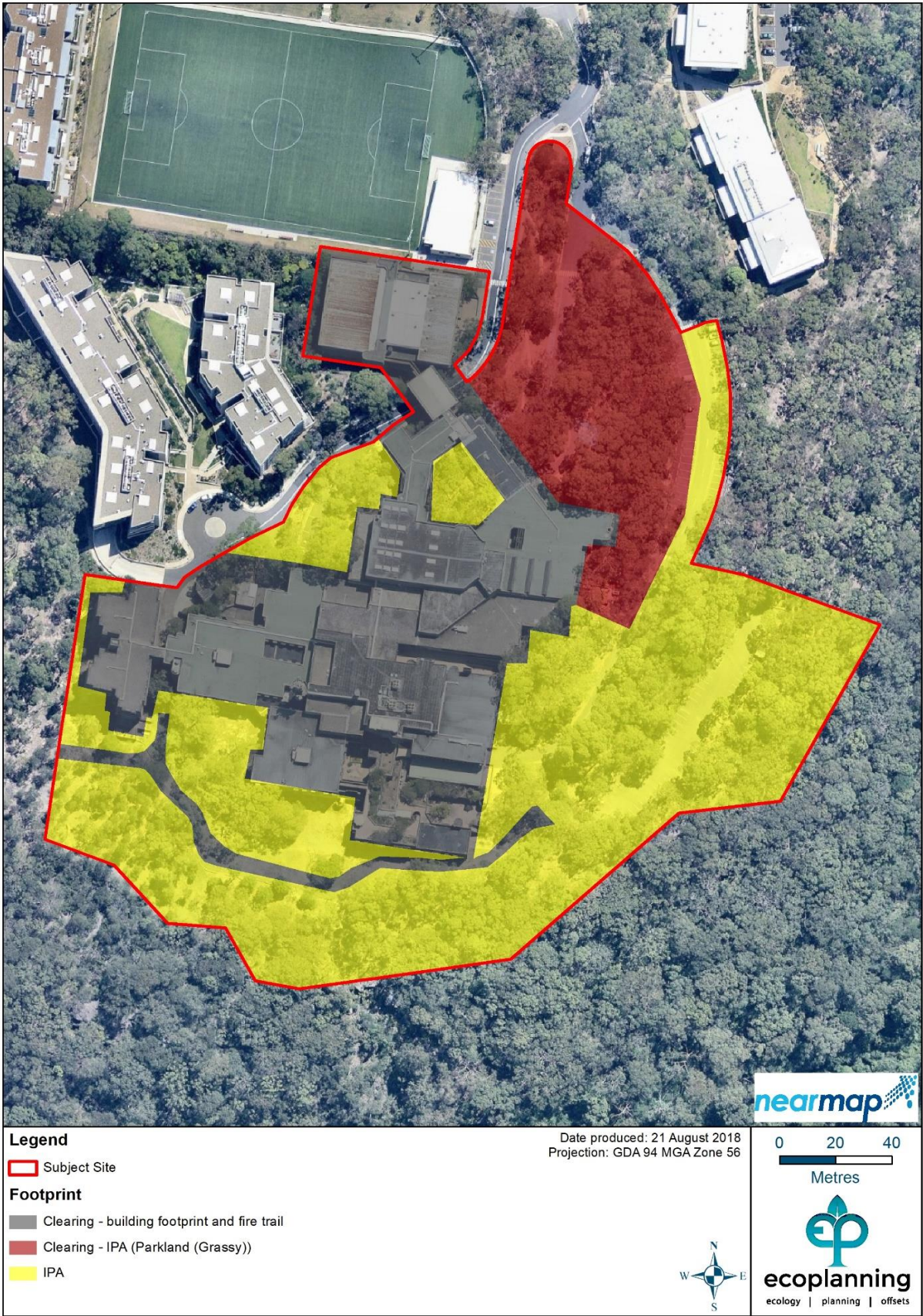


Figure 1.3: Stage 1 development footprint previously assessed and offset



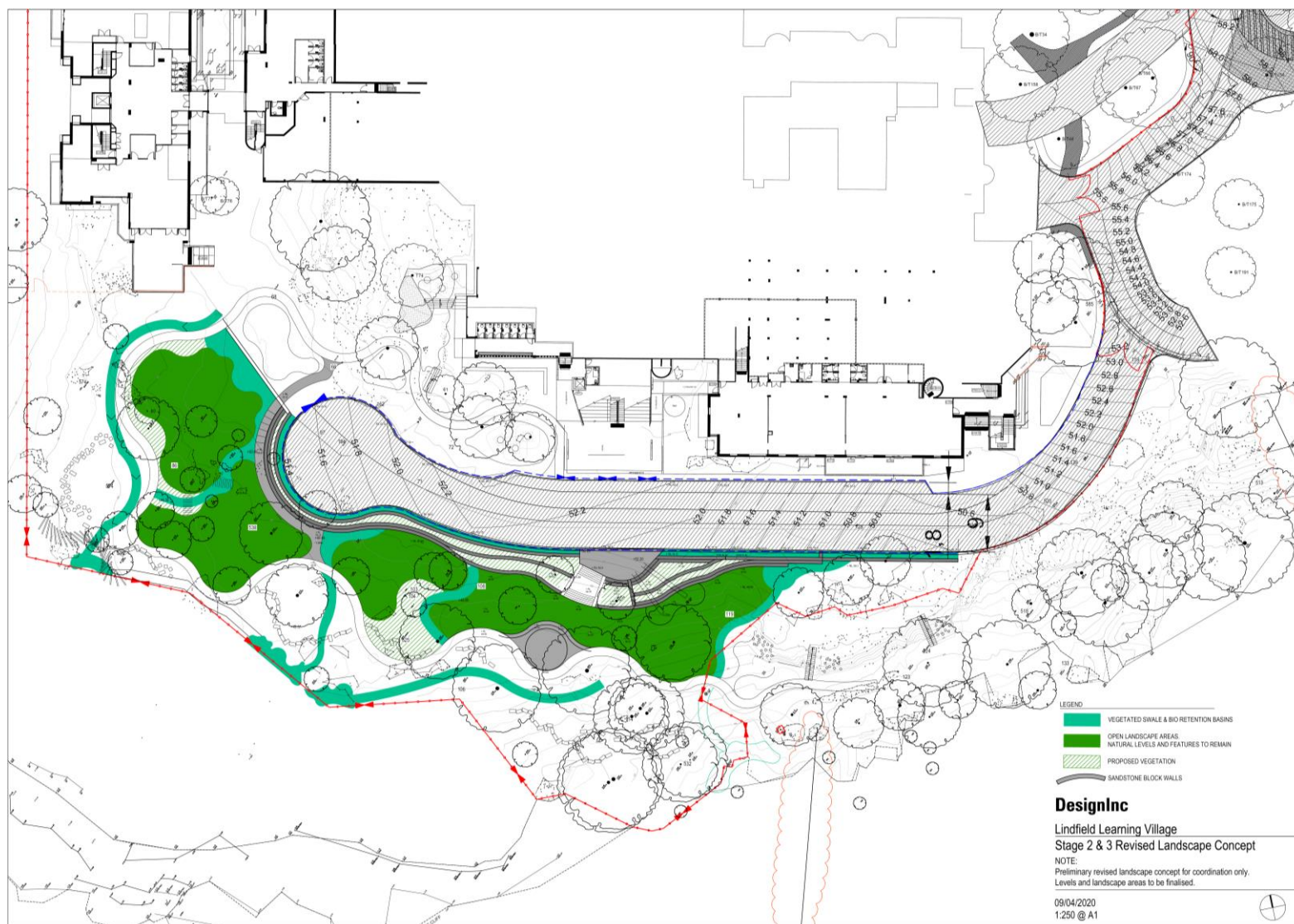






Figure 1.5: Stage 2 and 3 Proposed development footprint

## 2 Biodiversity considerations

### 2.1 Landscape features

In accordance with the FBA, a number of features are assessed within and surrounding the subject site in order to describe the landscape features and to calculate the final landscape score. These features are detailed within the Stage 1 BAR (Ecoplanning 2018), with the subject site having a final **landscape score of 12**.

### 2.2 Native vegetation

Two native vegetation types were identified in the subject site (**Figure 2.1**). Most native vegetation within the subject site is consistent with the description of Dwarf Apple - Broad-leaved Scribbly Gum - Sydney Peppermint low open woodland on sandstone ridges with subtle enrichment in northern Sydney (PCT1782), with smaller areas of and Smooth-barked Apple - Red Bloodwood open forest on enriched sandstone slopes around Sydney and the Central Coast (PCT1776) also identified. PCT1782 has been separated into two vegetation zones, 'underscrubbed' and 'intact'. The remainder of the subject site is mapped as 'cleared land', which is also separated into two zones, 'cleared – roads/infrastructure', and 'cleared – exotics/non-indigenous plantings'. The total area of each PCT and condition class (vegetation zone) being impacted is displayed in **Table 2.1**.

Neither of the two communities are listed as threatened ecological communities (TEC) under the TSC Act or the Commonwealth *Environmental Protection and Biodiversity Conservation Act 1999* (EPBC Act) (CoA 2010). Additional details regarding the vegetation within the subject site is outlined within the BAR for Stage 1 (Ecoplanning 2018).

**Table 2.1: Vegetation types and zones, a description and the total area within the development site**

Vegetation type (OEH 2013)	Plant community type (OEH 2016)	Threatened ecological communities	Condition	Area (ha)	Proportion of development site (%)
Hornsby Enriched Sandstone Exposed Woodland	PCT 1782 - Dwarf Apple - Broad-leaved Scribbly Gum - Sydney Peppermint low open woodland on sandstone ridges with subtle enrichment in northern Sydney	N/A	Underscrubbed	0.47	45.2
Coastal Enriched Sandstone Dry Forest	PCT 1776 - Smooth-barked Apple - Red Bloodwood open forest on enriched sandstone slopes around Sydney and the Central Coast	N/A	Intact	0.22	21.2
Other vegetation	Cleared land exotics and exotic/non-indigenous plantings	N/A	Exotics/non-indigenous	0.35	33.7
<b>Total</b>				<b>1.04</b>	<b>100.0*</b>

\* Rounding errors may apply



## 2.2.1 Current and future vegetation scores

Site value scores were calculated based on the plot and transect data collected for each vegetation zone as part of the Stage 1 BAR. The site value for each vegetation zone was reduced to either '0' for zones of 'complete clearing', or partially reduced for APZ zones which will retain some vegetation structure, with a future site value scores ranging from 25.52 to 39.06. Impacts from Stages 2 and 3 were in APZ zones, and the site value was further increased to '0', reflecting the complete clearance now proposed in those areas. The results are provided in **Table 2.2**.

**Table 2.2: Site value scores before and after development**

Plant community type	Vegetation zone	Impact Stage 2 and 3 only	Area (ha)	Site value score before development	Site value score after development
PCT 1782 - Dwarf Apple - Broad-leaved Scribbly Gum - Sydney Peppermint low open woodland on sandstone ridges with subtle enrichment in northern Sydney	Under-scrubbed	Complete clearing	0.47	25.52	0
PCT 1776 - Smooth-barked Apple - Red Bloodwood open forest on enriched sandstone slopes around Sydney and the Central Coast	Intact	Complete clearing	0.22	39.06	0





Figure 2.1: Field validated vegetation





Figure 2.2: Field validated vegetation and proposed footprint

## 2.3 Threatened Species

Detailed assessment of threatened species, in accordance with Section 6 of the FBA, has been undertaken across the subject site as part of the Stage 1 BAR. No candidate threatened species were recorded within the subject site. This BAR addendum assesses the same subject site as Stage 1 and as such no further consideration of threatened species has been undertaken as part of this addendum.

## 2.4 Avoid and minimise impacts on biodiversity values

The BAR for Stage 1 outlines the biodiversity impacts of the proposed development including steps to avoid and minimise impacts on biodiversity (see Ecoplanning 2018) in accordance with Section 8 of the FBA (OEH 2014). The proposed development consists predominantly of a refurbishment of existing buildings and grounds within the subject site. Vegetation impacts are largely associated with required bushfire mitigation measures to ensure the site is protected from bushfire. Onsite APZ management was assessed in the Stage BAR (Ecoplanning 2018), and offsite APZ management will be addressed in an REF (Ecoplanning 2019). APZ management will be conducted to reduce impacts, with hollow bearing trees maintained (Kleinfelder 2018), and limited clearing of mid-storey.

Complete clearing has been assumed for areas where all vegetation strata are to be removed and replaced by an extended driveway around the southern portion of the site for emergency vehicles, buses and drop off and pick up vehicles (Stage 1), and landscaping (Stages 2 and 3).



## 3 Impact summary

### 3.1 Thresholds for assessment and offsetting of unavoidable impacts of development

Section 9 of the FBA (OEH 2014) defines thresholds to be applied by the accredited assessor related to the assessment and offsetting of unavoidable impacts caused by development. A number of thresholds are defined, including:

1. impacts that the assessor is required to identify for further consideration by the consent authority;
2. impacts for which the assessor is required to determine an offset;
3. impacts for which the assessor is not required to determine an offset;
4. impacts that do not require further assessment by the assessor.

Point (2) applies due to the proposed impacts to a PCT associated with threatened species habitat. An offset must, therefore, be determined for the additional impacts of Stage 2-3, which includes 0.70 ha of complete clearing of native vegetation.

### 3.2 Ecosystem credits and species credits

#### 3.2.1 Change in landscape value score

The loss in landscape score following the proposed development is **12 (Table 3.1)**. This is landscape score change for the entire development, it has not been limited to the Stage 2-3 impact assessment.

**Table 3.1: Landscape score components.**

Landscape score component	Score Awarded
Change in connectivity score	0
Increase in native vegetation cover (inner assessment circle) score	0
Increase in native vegetation cover (outer assessment circle) score	0
Patch size area score	12
<b>Total</b>	<b>12</b>

#### 3.2.2 Current and future site value score

The current and future site value scores were calculated for the proposal. The plot and transect data collected was entered into the credit calculator, the site value scores calculated for the current condition and reduced to zero for the impacts associated with Stage 2-3. Results are provided in **Table 3.2**.

**Table 3.2: Site values before and after development, including ecosystem credit requirements**

Plant Community Type (PCT)	Vegetation zone	Impact type	Area impacted (ha)	Site value score before development	Site value score after	Ecosystem credit requirement
PCT 1782 - Dwarf Apple - Broad-leaved Scribbly Gum - Sydney Peppermint low open woodland on sandstone ridges with subtle enrichment in northern Sydney	Under-scrubbed	Complete clearing	0.47	25.52	0	10
PCT 1776 - Smooth-barked Apple - Red Bloodwood open forest on enriched sandstone slopes around Sydney and the Central Coast	Intact	Complete clearing	0.22	39.06	0	6
<b>Total</b>			<b>0.70<sup>1</sup></b>	<b>N/A</b>	<b>N/A</b>	<b>16</b>

<sup>1</sup> subject to rounding errors.

### 3.2.3 Required ecosystem credits

The total number of ecosystem credits required for additional impacts associated with Stage 2-3 is **16 credits**.

### 3.2.4 Required species credits

There are no species credits required for the proposal.

## 4 Biodiversity Credit Report

### 4.1 Credit profiles

#### 4.1.1 Ecosystem credits.

The ecosystem credits required to offset the additional impacts associated with Stages 2-3 are provided in **Table 4.1** and **Appendix A**.

**Table 4.1: Ecosystem credits summary and credit profiles**

Plant community type (impact)	Impact area (ha)	Credits required	Plant community type (offset options)	IBRA sub-region
Dwarf Apple - Broad-leaved Scribbly Gum - Sydney Peppermint low open woodland on sandstone ridges with subtle enrichment in northern Sydney	0.47	10	Dwarf Apple - Broad-leaved Scribbly Gum - Sydney Peppermint low open woodland on sandstone ridges with subtle enrichment in northern Sydney	Pittwater (Part B) and any IBRA subregion that adjoins the IBRA subregion in which the development occurs
Smooth-barked Apple - Red Bloodwood open forest on enriched sandstone slopes around Sydney and the Central Coast	0.22	6	Smooth-barked Apple - Red Bloodwood open forest on enriched sandstone slopes around Sydney and the Central Coast	Pittwater (Part B) and any IBRA subregion that adjoins the IBRA subregion in which the development occurs
<b>Total</b>	<b>0.70<sup>1</sup></b>	<b>16</b>	<b>N/A</b>	<b>N/A</b>

<sup>1</sup> subject to rounding errors.

#### 4.1.2 Species credits

No species credits were required for this assessment.



## 4.2 Biodiversity Offset Strategy

**The credit requirement for Stage 2-3 of the proposed development is limited to 10 ecosystem credits for PCT 1782 and 6 ecosystem credits for PCT-1776.** These credit requirements are BioBanking credits.

**Table 4.2: Credit requirements for Stages 2-3**

Plant Community Type (PCT)	Additional credit requirement for Stage 2-3
PCT 1782 - Dwarf Apple - Broad-leaved Scribbly Gum - Sydney Peppermint low open woodland on sandstone ridges with subtle enrichment in northern Sydney	10 credits
PCT 1776 - Smooth-barked Apple - Red Bloodwood open forest on enriched sandstone slopes around Sydney and the Central Coast	6 credits

Due to no credits of these types (PCT-1782 and 1776) currently being available in the NSW BioBanking credit market, the proponent intends to allay the offset obligation through payment to the Biodiversity Conservation Fund (BCF).

The offset obligation calculated under the FBA for this addendum BAR under the NSW *Threatened Species Conservation Act 1995* (TSC Act) is not directly equivalent to the credits generated through payment into the BCF. As such, an assessment of reasonably equivalent biodiversity credits is required to determine the equivalent quantum of credits to be paid for into the BCF. This assessment will need to be undertaken by the NSW Office of Environment and Heritage. An Application for Reasonable Equivalence is provided as **Appendix B**.

The cost per credit, using the OEH Biodiversity Offsets Payment Calculator (BOPC) (OEH 2018), is provided in **Figure 4.1**. These prices are subject to change and are re-calculated quarterly. It cannot be determined how many reasonably equivalent credits will be required following the conversion by OEH, however based upon the conversion applied to the Stage 1 BAR it is likely to be lower than that calculated under the FBA.



# Biodiversity Offset Payment Calculator

Version: 2.0.1  
Last updated: 12/02/2020 13:



Credit Offset Payment Calculator

()

()

Payments

()

Ecosystem credits for plant communities types (PCT), ecological communities & threatened species habitat

IBRA sub region	PCT common name	Threaten status	Offset trading group	Risk premium	Administrative cost	Methodology adjustment factor	Charge per credit	No. of ecosystem credits	Final credits charge
Pittwater	1776 - Smooth-barked Apple - Red Bloodwood open forest on enriched sandstone slopes around Sydney and the Central Coast	No	Sydney Coastal Dry Sclerophyll Forests	19.73%	\$207.93	2.5843	\$6,431.64	1	\$6,431.64
Pittwater	1782 - Dwarf Apple - Broad-leaved Scribbly Gum - Sydney Peppermint low open woodland on sandstone ridges with subtle enrichment in northern Sydney	No	Sydney Coastal Dry Sclerophyll Forests	19.73%	\$441.22	2.5843	\$13,647.94	1	\$13,647.94
Subtotal (excl. GST)									<b>\$20,079.58</b>
GST									<b>\$2,007.96</b>
Total ecosystem credits (incl. GST)									<b>\$22,087.54</b>
Calculated as on: 16/04/2020 06:41:42								Grand total	<b>\$22,087.54</b>

Figure 4.1: Screenshot from Biodiversity Offsets Payment Calculator (16 April 2020)



ecoplaning

ecology | planning | offsets

## 5 References

Advanced Bushfire Performance Solutions (2017) Bushfire Assessment Report – s.100B 'Special Fire Protection Purpos'. Lot 2 & 4 DP 1151638 Lindfield Learning Village Eton Road, Lindfield. Version 2.1

Alphitonia Environmental Construction Service (2016). Advice to the Department of Education re: Asset Protection Zone.

Chapman G.A., Murphy, C.L., Tille P.J., Atkinson G. and Morse R.J. (2009) Ed. 4, Soil Landscapes of the Sydney 1:100,000 Sheet map, Department of Environment, Climate Change and Water, Sydney.

Commonwealth Dept. of the Environment and Energy (DoEE) (2017). Protected Matters Search Tool. Accessed at: <http://www.environment.gov.au/epbc/protected-matters-search-tool>

Ecoplanning (2018). Biodiversity Assessment Report – Framework for Biodiversity Assessment – Lots 2 and 4 // DP 1151638, Eton Rd, Lindfield – UTS Ku-ring-gai campus (v 5.0). Prepared for DesignInc Sydney Pty Ltd, on behalf of NSW Dept. of Education.

Ecoplanning (2019) (in prep). Review of Environmental Factors – Asset Protection Zone in Kuringai National Park. Prepared for DesignInc, on behalf of NSW Dept. of Education for NSW National Parks and Wildlife Service.

NSW Dept. of Planning and Environment (DPE) (2017). NSW Planning Viewer Beta. NSW Government. Accessed at: <https://maps.planningportal.nsw.gov.au/Terms>

NSW Land and Property Information (LPI) (2017). SIX Maps. Accessed at: <https://maps.six.nsw.gov.au/>

NSW Office of the Environment (NSW OEH) (2013). The native vegetation of the Sydney Metropolitan Area (Version 2). NSW Office of Environment and Heritage, Sydney.

NSW Office of Environment and Heritage (NSW OEH) (2014). *Framework for Biodiversity Assessment. NSW Biodiversity Offsets Policy for Major Projects*. NSW Office of Environment and Heritage, Sydney.

NSW Office of the Environment (NSW OEH) (2016). The native vegetation of the Sydney Metropolitan Area (Version 3). NSW Office of Environment and Heritage, Sydney.

## Appendix A Biodiversity Credit Report

### BioBanking Credit Calculator



#### Ecosystem credits

Proposal ID : 0076/2018/4826MP  
Proposal name : Lindfield Learning Village FBA Assessment - June 2019  
Assessor name : Lucas McKinnon  
Assessor accreditation number : 0076  
Tool version : v4.0  
Report created : 08/07/2019 15:39

Assessment circle name	Landsc ape score	Vegetation zone name	Vegetation type name	Condition	Red flag status	Management zone name	Management zone area	Current site value	Future site value	Loss in site value	Credit required for biodiversity	Credit required for TS	TS with highest credit requirement	Average species loss	Species TG Value	Final credit requirement for management zone
1	12.00	ME67_Moderate/Good	Dwarf Apple - Broad-leaved Scribbly Gum - Sydney Peppermint low open woodland on sandstone ridges with subtle enrichment in northern Sydney	Moderate/Good	Yes	MZ2a CC	0.47	25.52	0.00	25.52	0	10	Barking Owl	22.22	3.00	10
1	12.00	ME64_Moderate/Good	Smooth-barked Apple - Red Bloodwood open forest on enriched sandstone slopes around Sydney and the Central Coast	Moderate/Good	No	MZ3b CC	0.22	39.06	4.69	34.37	0	6	Barking Owl	55.56	3.00	6





## BioBanking Credit Calculator

### Species credits



Proposal ID :  
Proposal name :  
Assessor name :  
Assessor accreditation number :  
Tool version : v4.0  
Report created : 08/07/2019 15:39

Scientific name	Common name	Species TG value	Identified population?	Can Id. popn. be offset?	Area / number of loss	Negligible loss	Red flag status	Number of credits
No								



## Appendix B Application for an Assessment of Reasonable Equivalence (OEH 2018)

### Application for an assessment of reasonable equivalence of biodiversity credits

Clause 22 of the *Biodiversity Conservation (Savings and Transitional) Regulation 2017* (**BC S&T Regulation**) provides that obligations to retire biodiversity credits under the *Threatened Species Conservation Act 1995* (**TSC Act**) become obligations to retire biodiversity credits under the *Biodiversity Conservation Act 2016* (**BC Act**).

The Chief Executive of the Office of Environment and Heritage (**OEH**) or his/her delegate will determine the 'reasonably equivalent' credit obligation that remains to be satisfied by the retirement of biodiversity credits under clause 22.

This purpose of this form is to apply for OEH assessment of reasonable equivalence of biodiversity credits associated with an existing offset obligation. This step is not necessary for biodiversity credits that have been calculated in accordance with the Biodiversity Assessment Method under the BC Act.

Once a determination of reasonable equivalence has been made, OEH will provide a statement that sets out the number and class of biodiversity credits that are reasonably equivalent under the BC Act Biodiversity Offsets Scheme.

For any questions or for assistance completing this form, please email [lmbsupport@environment.nsw.gov.au](mailto:lmbsupport@environment.nsw.gov.au) or call 1800 931 717.

#### APPLICANT DETAILS

Complete this part to identify the applicant:

<b>Applicant (if a company)</b>			
<b>Company</b>			
<b>ACN</b>		<b>GST registered</b>	<input type="checkbox"/> Yes <input type="checkbox"/> No
<b>ABN</b>		<b>GST registered</b>	<input type="checkbox"/> Yes <input type="checkbox"/> No
<b>Street address</b>			
<b>Address</b>			
<b>Suburb / city</b>			
<b>State / territory</b>		<b>Postcode</b>	
<b>Country</b>			
<b>Mailing address (if different from above)</b>			
<b>Address</b>			
<b>Suburb / city</b>			
<b>State / territory</b>		<b>Postcode</b>	



<b>Country</b>			
<b>Contact details</b>			
<b>Contact name</b>			
<b>Capacity in which making application (e.g. applicant company director, appointed nominee etc)</b>			
<b>Phone</b>		<b>Mobile</b>	
<b>Fax</b>		<b>Email</b>	

## BIODIVERSITY CREDITS

Please list details below of the biodiversity credits that are required to be retired under the TSC Act in relation to which you wish OEHL to determine reasonably equivalent biodiversity credits under the BC Act:

Existing statutory obligation reference <sup>1</sup>	Biodiversity credit name (Plant Community Type name and ID, or threatened species name) <sup>2</sup>	IBRA sub region <sup>3</sup>	EPBC Act relevant	Number of credits <sup>4</sup>
SSD16_8114	Smooth-barked Apple – Red Bloodwood open forest on enriched sandstone slopes around Sydney and the Central Coast (ME064)	Pittwater (Part B) and any IBRA sub-region that adjoins the IBRA subregion in which the development occurs	NA	6
	Dwarf Apple – Broad-leaved Scribbly Gum – Sydney Peppermint low open woodland on sandstone ridges with subtle enrichment in northern Sydney (ME067)		NA	10

## SUPPORTING DOCUMENTATION REQUIRED

Please provide the following supporting documentation:

<sup>1</sup> This refers to either; a development application number for a development consent under Part 4 of the *Environmental Planning and Assessment Act 1979 (EP&A Act)*, a State significant infrastructure approval under the previous Part 5.1 (now Part 5, Division 5.2) of the EP&A Act, a decision of a determining authority to carry out or approve the carrying out of an activity under Part 5 of the EP&A Act, or a biobank statement number or biodiversity certification number.

<sup>2</sup> Refers to the name of the biodiversity credits required under the statutory obligation

<sup>3</sup> Refers to the Interim Biogeographic Regionalisation for Australia subregion in which the development or activity occurs.

<sup>4</sup> The number of biodiversity credits as set out in the consent or approval conditions, biobanking statement or biodiversity certification approval that are required to be retired, and that you wish OEHL to determine equivalence for.



Documentation required	Attached
Development consent including all conditions of approval relating to the credit retirement obligation	<input checked="" type="checkbox"/> Yes (Draft attached)
Is this development a controlled action under <i>the Environment Protection and Biodiversity Conservation Act 1999</i> (EPBC Act). If yes please provide details	<input type="checkbox"/> Yes <input checked="" type="checkbox"/> No
Credit report from the Credit Calculator for Major Projects/Biobanking, or Biodiversity Certification Assessment Method Credit Calculator	<input checked="" type="checkbox"/> Yes
For flora species credits only - species data including count and polygon area in hectares and relevant shapefiles	<input type="checkbox"/> Yes <input checked="" type="checkbox"/> N/A
Documentary evidence of legal authority if this form is to be signed on applicant's behalf by someone other than the applicant (e.g. power of attorney, executor, trustee, company director etc)	<input type="checkbox"/> Yes

## DECLARATION

### Signature of applicant

This application must be completed and signed by the applicant or by the participant/appointed nominee who is making this application on behalf of the applicant and who has the legal authority to sign<sup>5</sup>.

Owner category	Application is signed and certified by
<input type="checkbox"/> Individual(s)	All the individuals who are the entity holding credit obligation
<input type="checkbox"/> Company	<input type="checkbox"/> the common seal being affixed in accordance with the <i>Corporations Act 2001</i> , or <input type="checkbox"/> two directors, or <input type="checkbox"/> a director and a company secretary, or <input type="checkbox"/> the director, if a proprietary company that has a sole director who is also the sole company secretary.
<input type="checkbox"/> A local council	<input type="checkbox"/> the general manager in accordance with section 377 of the <i>Local Government Act 1993 (LG Act)</i> , or <input type="checkbox"/> the seal of the council being affixed in a manner authorised under the LG Act.
<input type="checkbox"/> A public authority other than a council	The chief executive officer of the public authority.

<sup>5</sup> If you are signing on the applicant's behalf you must state the nature of your legal authority and attach documentary evidence of your legal authority (e.g. power of attorney, executor, trustee, company director, etc.).





I/We:

- Declare that the information in this application form (including any attachments) is accurate and up to date to the best of my/our knowledge;
- Understand and acknowledge that it is an offence under section 307B of the *Crimes Act 1900* (NSW) for a person to give information to a public authority, knowing the information is false or misleading or omits any matter or thing without which the information is misleading.

Signature		Signature	
Name		Name	
Position		Position	
Date		Date	

Affix common seal (if signing under seal):

### LODGING YOUR REQUEST WITH OEH

Once you have fully completed and signed the form, send the application with all attachments to OEH in one of the following ways:

Email your request with the required accompanying documentation to [Imbc.support@environment.nsw.gov.au](mailto:Imbc.support@environment.nsw.gov.au). If the email and its attachments are larger than 20MB, please contact us via email to organise method of delivery.

**Post** your completed application with the required accompanying documentation to:

**Office of Environment and Heritage**  
**PO Box A290**  
**Sydney South, NSW 1232**  
**Australia**

Once received, OEH will acknowledge receipt of your request.

### OEH OFFICE USE ONLY

Received date	Completed date	Confirmation issued	Invoice number
/ /	/ /	/ /	

Published by:  
Office of Environment and Heritage, NSW  
59–61 Goulburn Street, Sydney  
PO Box A290, Sydney South, 1232  
Phone: (02) 9995 5000 (switchboard)  
TTY: (02) 9211 4723  
Fax: (02) 9995 5999  
Email: [info@environment.nsw.gov.au](mailto:info@environment.nsw.gov.au)  
Website: [www.environment.nsw.gov.au](http://www.environment.nsw.gov.au)

