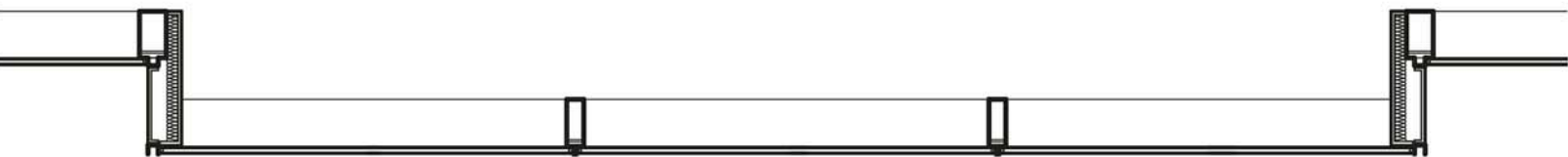


Materiality | Glass Pixel

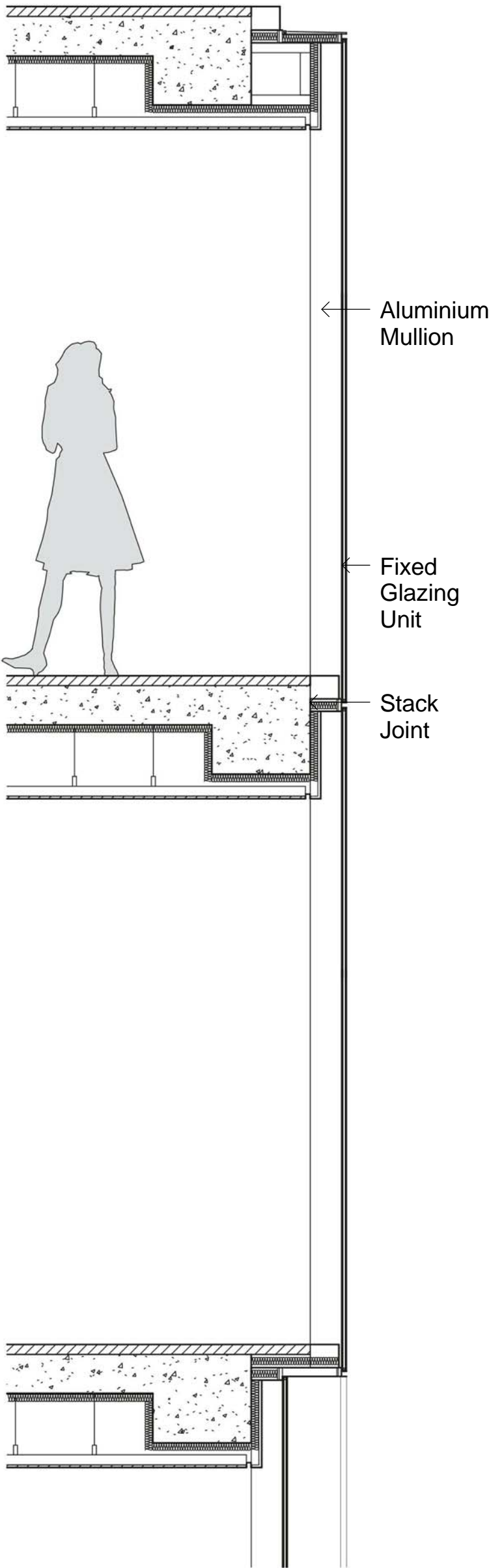
The glass pixels are modular, glazed curtain wall, with framing minimized to preserve the views and to maintain a sharp, high-resolution appearance. The glass has been chosen such that it balances transparency (as an experiential and aesthetic goal) and reflectivity (minimized per regulation requirement), with an overall colour and sheen that complements the other high-end examples along the Sydney skyline.



Partial Elevation



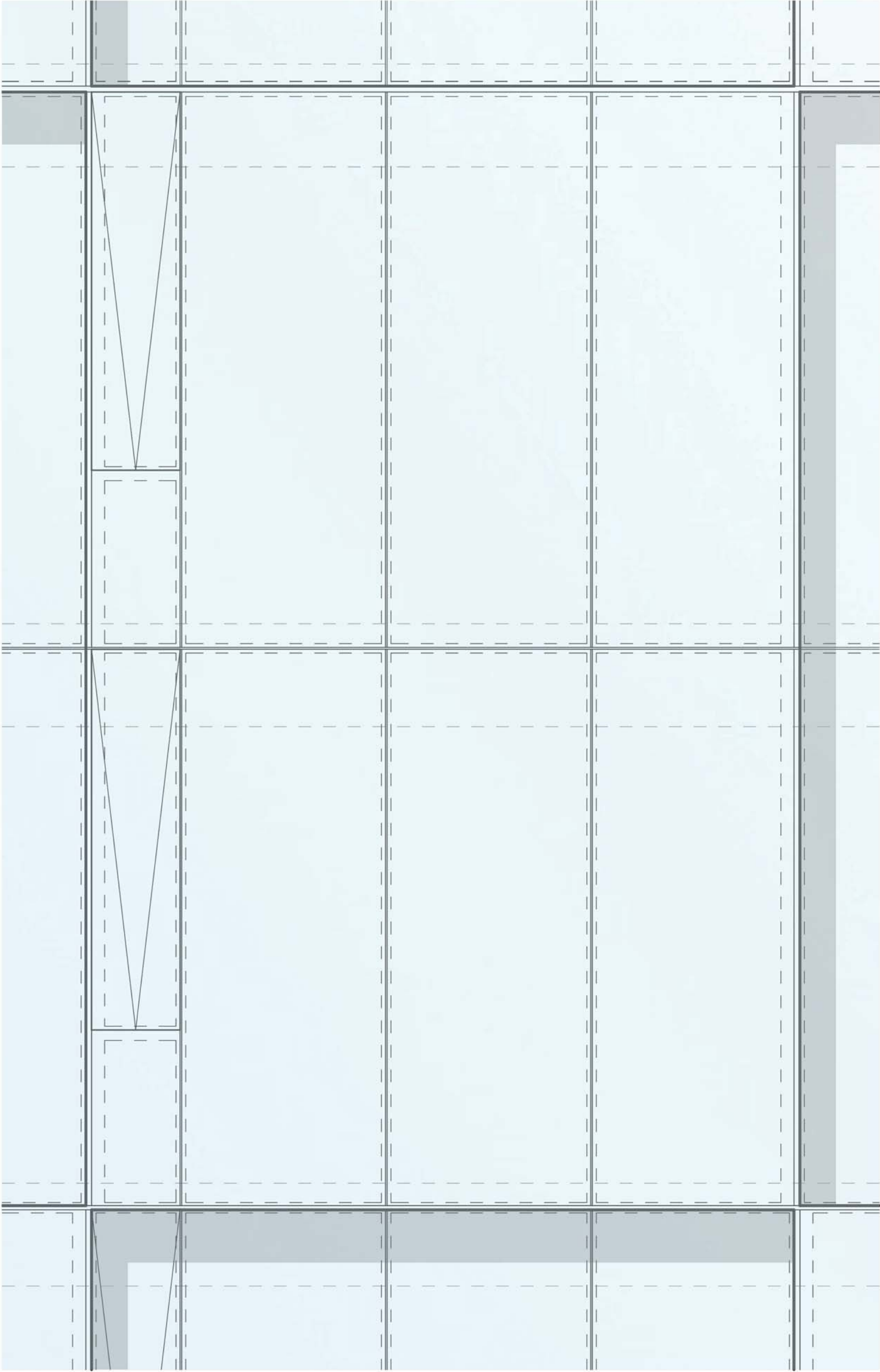
Partial Plan



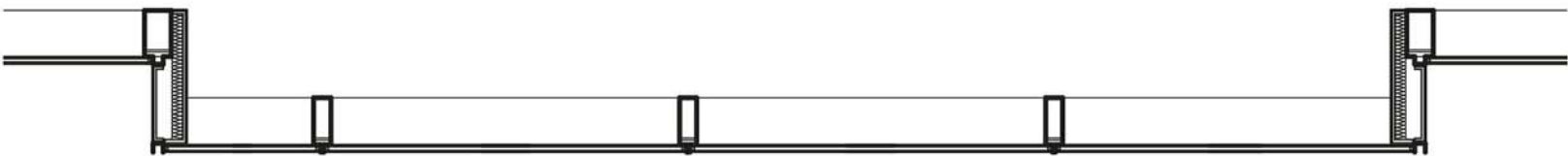
Partial Wall Section

Breathable Facade

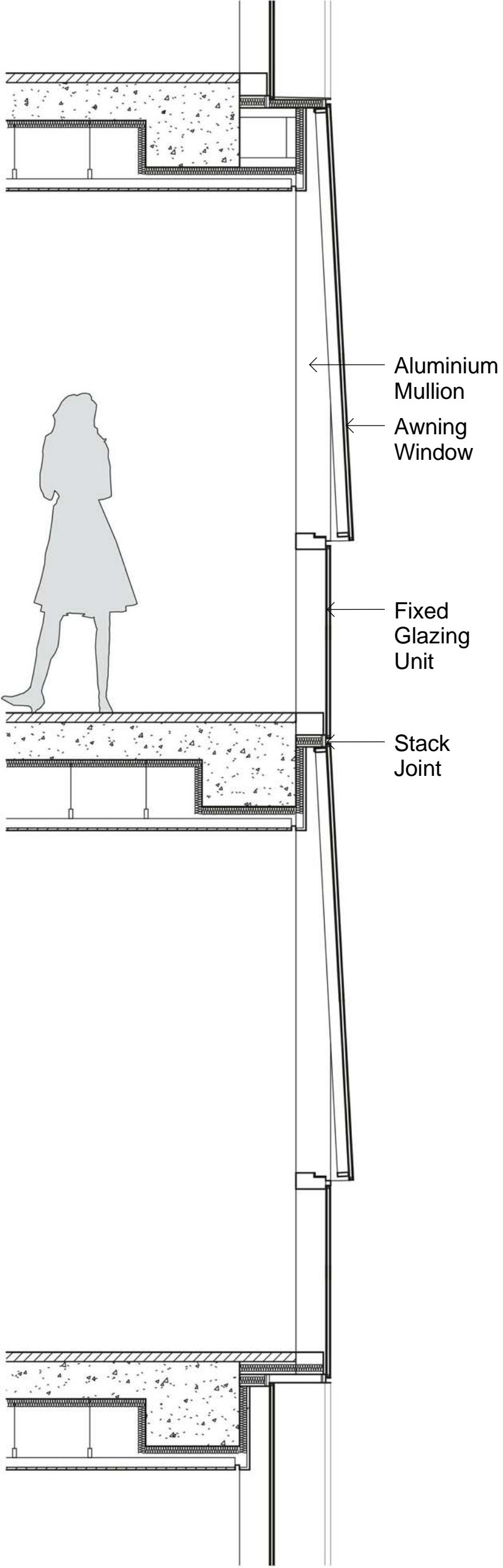
The curtain wall system integrates operable units as part of a holistic energy performance and sustainability strategy. These offer the option of natural ventilation to the occupants of the hotel, with airflow and pressures balanced with the overall mechanical/ ventilation management master plan. The aesthetic intent requires for the detailing to remain similarly minimal and integrated with the typical pixel, while keeping a manageable weight for the operable panel.



Partial Elevation



Partial Plan



Partial Wall Section

CLIENT:



ARUP

ENGINEERS
ARUP

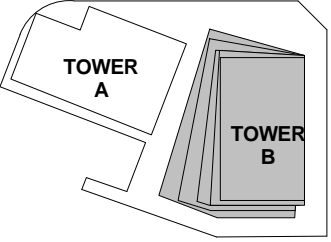
O C U L U S

LANDSCAPE
OCULUS

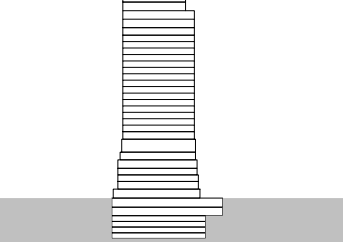


PLANNER
URBIS

KEY PLAN:



KEY SECTION:



PROJECT:

Wanda Vista Sydney

1 Alfred Street Sydney NSW 2000

A	28.10.2016	ISSUED FOR STAGE 2 DEVELOPMENT APPLICATION	SH
ISSUE	DATE	REVISION	BY

DRAWING TITLE:

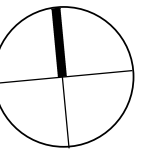
FACADE DETAILS

DATE:	SCALE:	DRAWING No:	REV:
17.10.2016	@ A1		
DRAWN BY:	PROJECT NO:	2008	A
KKAA, CRONE	CA3054		

DA ISSUE

NOTES:
All dimensions and setbacks to be verified prior to commencement, omissions or discrepancies to be notified to the architect.
COPYRIGHT:
The copyright of this drawing together with any other documents prepared by crone partners architecture studios, pty ltd (cp) remains the property of cp. crone partners grants licence for the use of this document for the purpose for which they are intended. The licence is not transferable without the permission of cp.

NORTH



DO NOT SCALE

