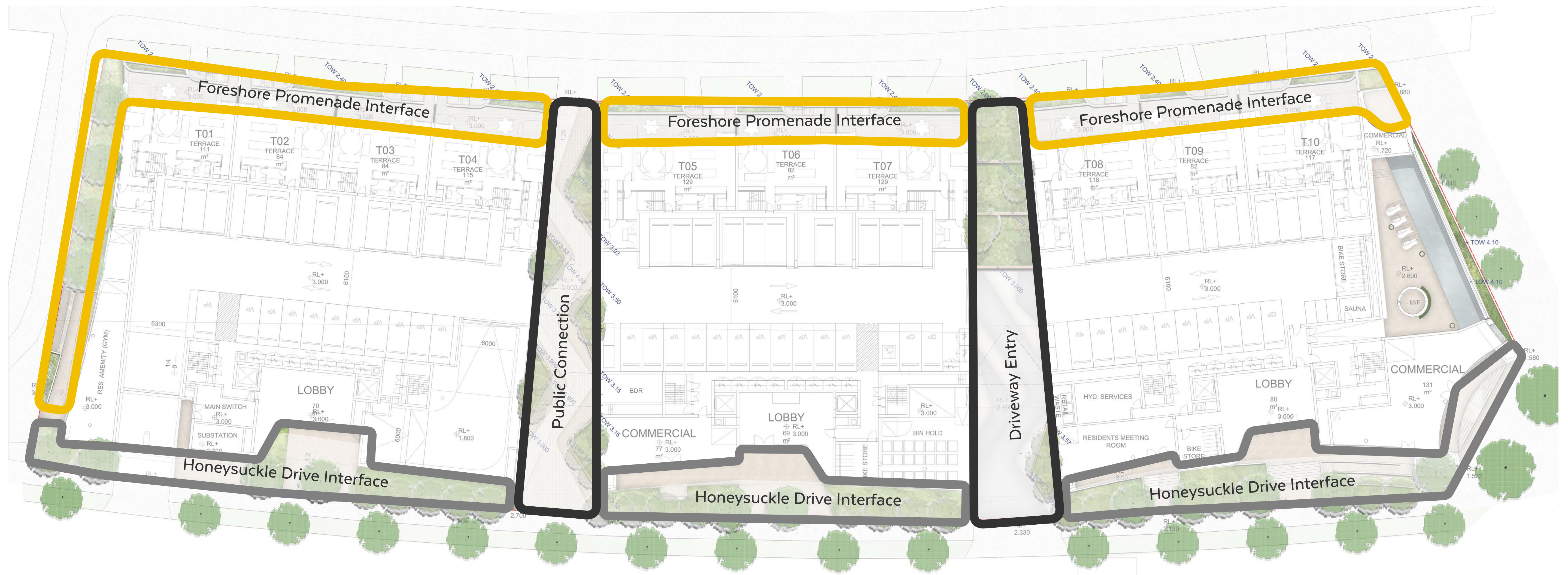


SYDNEY DESIGN COLLECTIVE

Collaborative Landscape Architecture

50 Honeysuckle Drive, Newcastle | Landscape Development Application | Rev D DA 20170506

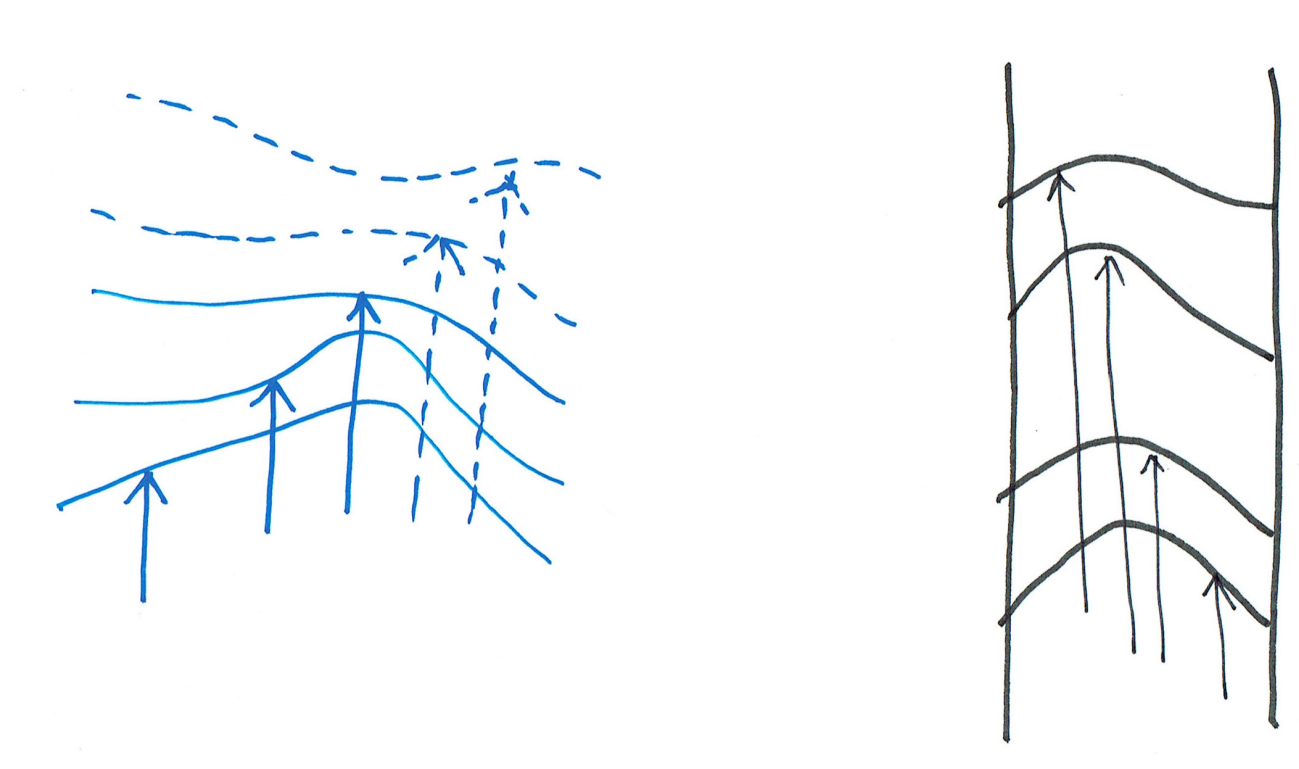


DRAWING LIST

- LDA 01 - Landscape Identity + Principles
- LDA 02 - Landscape Plan
- LDA 03 - Landscape Sections
- LDA 04 - Landscape Sections
- LDA 05 - Landscape Roof Plan and Section
- LDA 06 - Communal Rooftop Plan
- LDA 07 - Communal Rooftop Section and Planting
- LDA 08 - Indicative Planting List

Landscape Identity | Concept + Narrative

“An overarching landscape narrative will be carried through the key landscape spaces that defines the structure and identity of the development. The conceptual theme intends to create a strong sense of place whilst relating to the Honeysuckle Public Domain Principles and build upon the architectural concept and geometries. The narrative of the existing tidal fluctuating landscape allows for a thoughtful and considerate exploration of the planting palette, geometry specific materials detailing.”



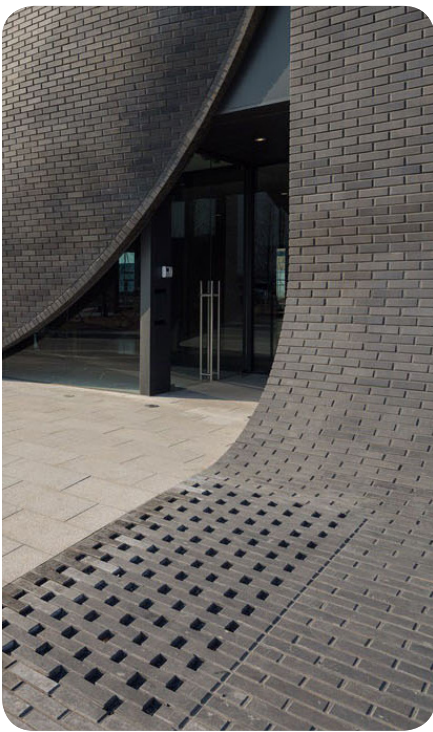
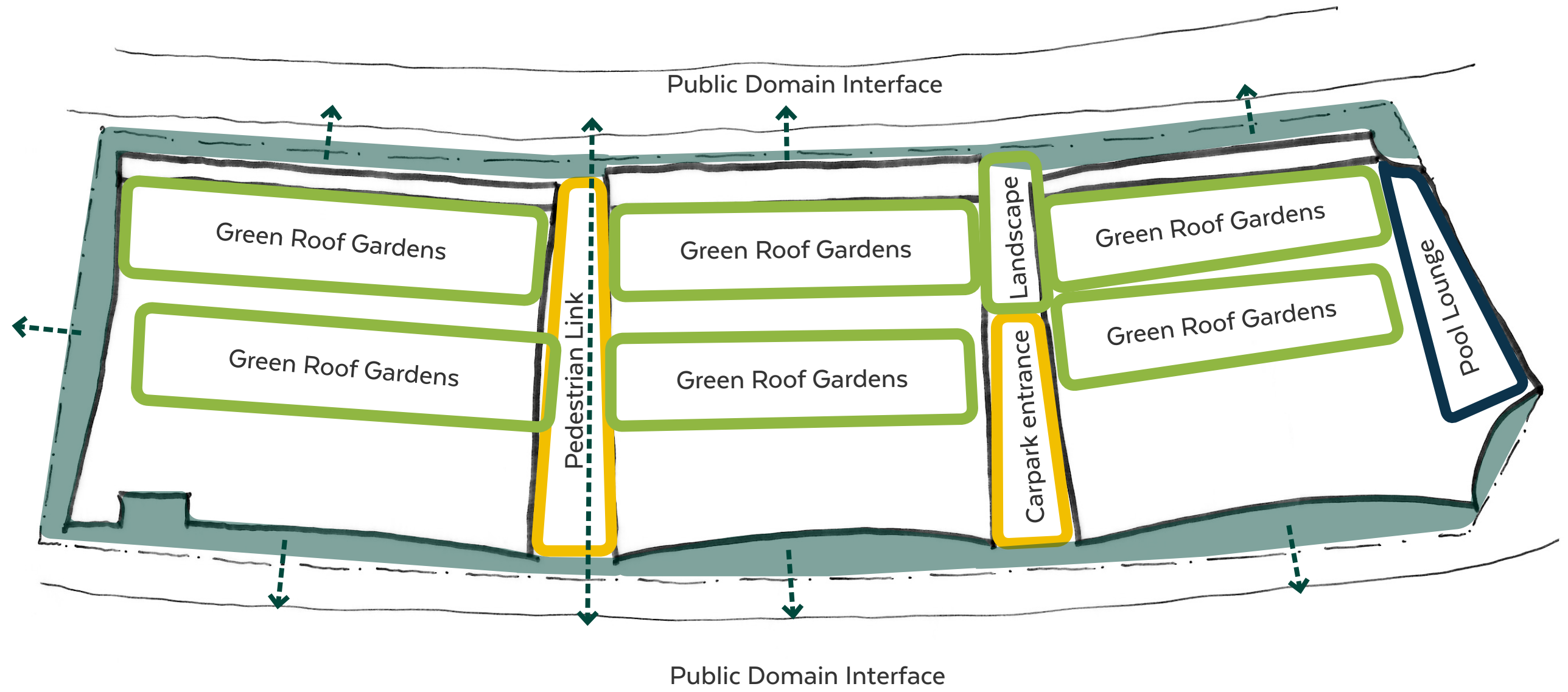
Tidal water movements and patterns

Landscape Design Principles

Design Principles
The landscape design of the pedestrian links have been based on the following principles;

- Build upon the architectural concept to create a strong sense of place and building identity.
 - Respond to existing site conditions with a landscape gesture that creates a visual connection between the waterfront and Honeysuckle Drive.
 - Propose high quality materials and finishes that are consistent with the architectural benchmarks.
 - Design the public realm in line with Honeysuckle Public Domain Strategy and DCP.
 - Create a safe pedestrian environment for both day and nighttime use and design according to CPTED principles.
 - Ensure that landscape elements allows for clear permeability and circulation.
 - Provide an uplifting everyday experience.
 - Consider ongoing maintenance requirements of the landscape components.
- Create a striking visual experience for the residential outlook as well as for the public along the foreshore promenade.
 - Use drought and exposure tolerant planting that uses a mixture of hardy exotic and native species suitable for rooftop planting.
 - Propose that it is a ‘biodiversity’ rooftop using attractive native plant species that attract pollinating insects, including bees and butterflies.
 - Provide security and privacy for ground floor terraces but without a continuous walled edge, using terrace, raised edges and blade walls to present a garden terrace frontage from the promenade.
 - Use shade and exposure tolerant planting that uses a mixture of hardy exotic and native species suitable for interior and undercroft planting.
 - Create a communal pool space that is attractive, comfortable, and a residential heaven.

Landscape Spaces



Ground surface and raised planter walls in unifying materials.



‘Dune’ tidal landscape of ramping of soft and hard landscape.



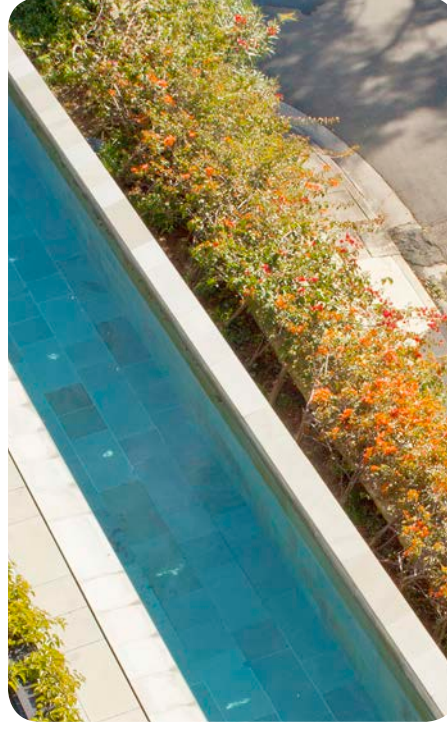
High quality unit paving to pedestrian link.



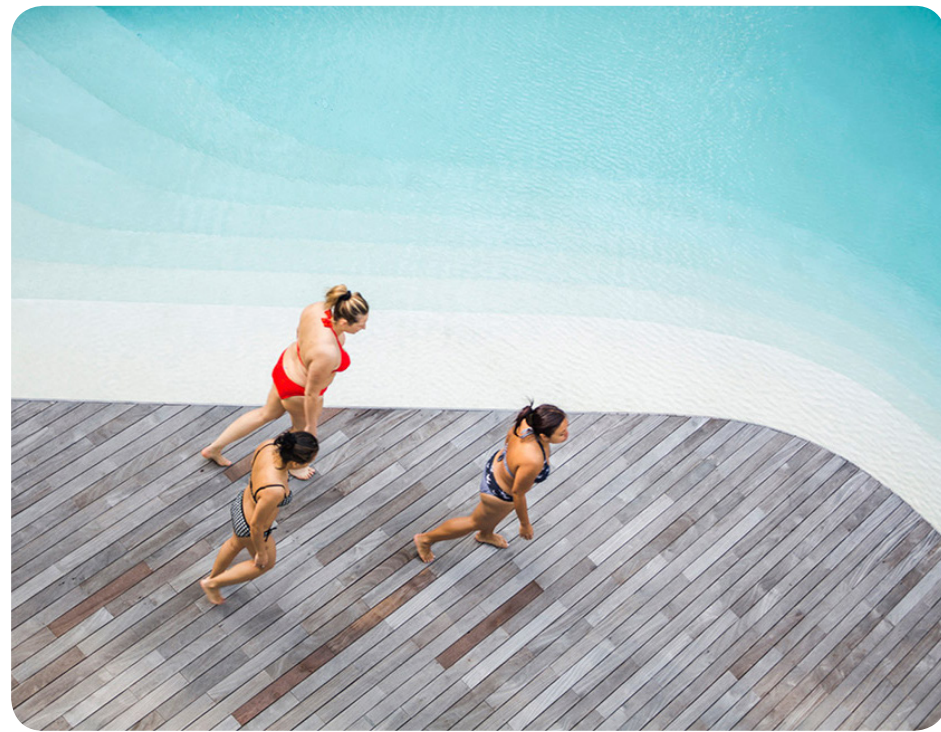
Variations in planting density and utilising gravel to highlight and define particular plant species.



Variations in planting species, density and height.



Pool with planting edge to street interface.



Pool with clear defined edge.



Vines on wire structure to pool columns.

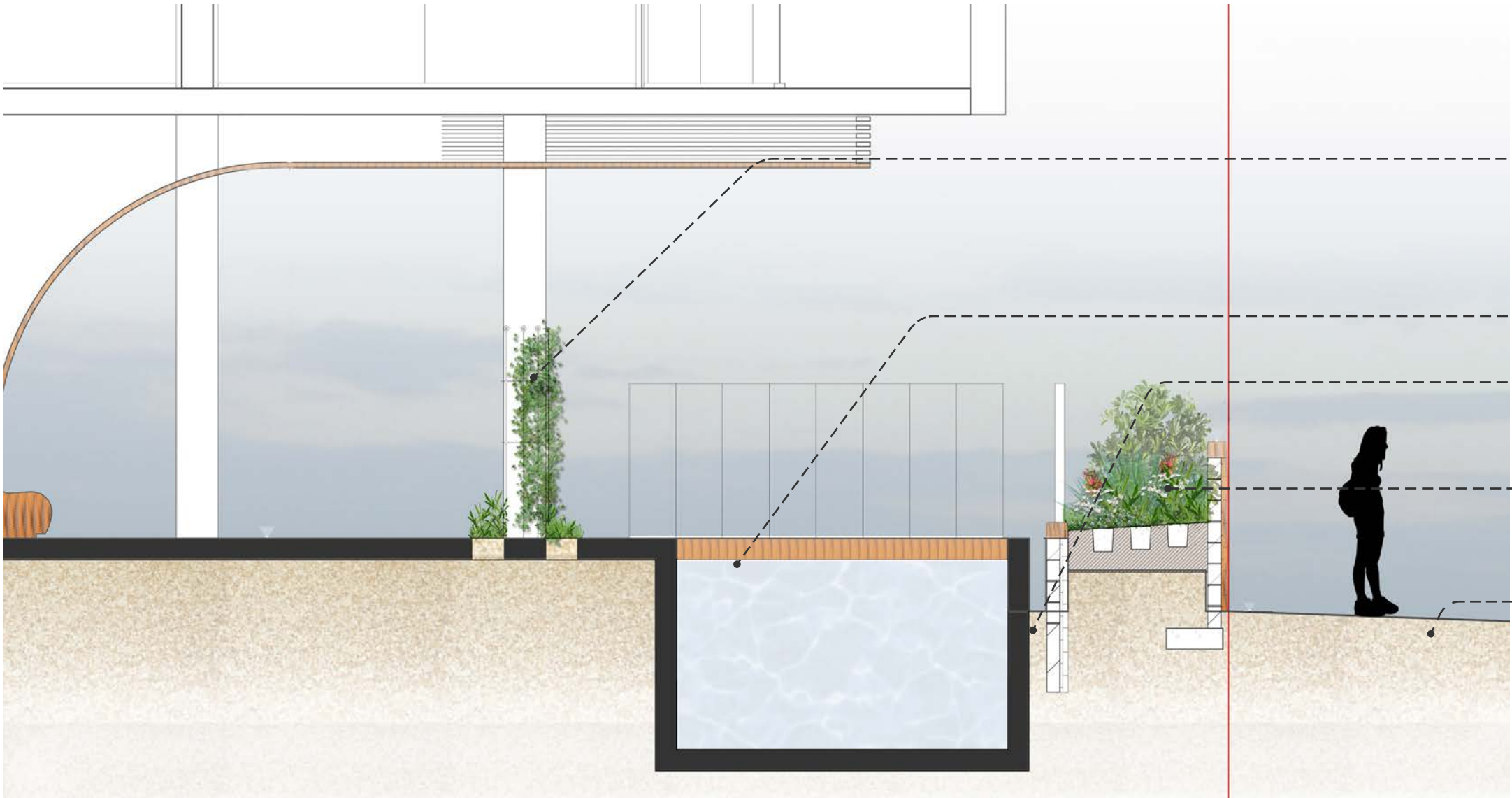


Integrate stepped entrances within embankments of planting.

Landscape Plan | 1:250 @ A1



Pool Planter Section A-A | 1:50 @ A1



- Vines on wire structure to column to the eastern side with shade tolerant understory planting.
- Pool to architects detail.
- Pool overflow and protection zone to planting.
- Raised planter for pool users privacy and green interface to public domain. Wall height 1600mm.
- Public Domain Footpath.

Legend

- Ramp at 1:20 to provide all access through public connection between Honeysuckle Drive and the Waterfront promenade.
- Raised planters nominally 450-900 mm high with a minimum soil depth of 1m for trees to provide planting against building facade to help retain sight lines through connection.
- Building carpark entry.
- Small native rainforest tree planting with understory on landscaped embankments along public domain.
- Raised landscape planters to ensure minimum soil depth of 1m to trees. No pedestrian access through landscaped zone.
- Building carpark entrances.
- Raised planter mounded marking entrance from Honeysuckle Drive.
- A different selection of rain forest tree by each stair access to highlight the building entrances.
- Indicative public domain planting /works subject to future discussion with Council resulting from any conditions of consent.
- Planting along pool edge for privacy and as a landscape backdrop to pool.
- Landscape planted terraces with high quality finish to integrate with architecture.
- Paving to the pedestrian link to be a combination of materials complimentary to the architecture to provide a more pedestrian friendly character.
- Driveway in insitu concrete with a pattern treatment of exposed aggregate for non slip finish and to tie in to paving pattern of pedestrian link.

Compliance with Contamination Site Audit Statement

- Provision will be made for geofabric separation layer over existing site soils within the scope of work area;
- Minimum 300mm of approved imported soils above existing site soils will be nominated with specification and drawing detail provided from post Development Approval showing the required build-up, and co-ordinated with the Excavation Management Plan - (EMP)
- The quality of imported soils will be nominated and certified (ie from approved commercial supplier, conforming to statutory and regulatory requirements);
- Soil depth for trees should consider tree growing volume and depth (to a nominal 1m depth is sufficient for the proposed planting).
- Design development and documentation drawings after development approval will show all of these area sections at a larger scale and in detail showing the required build-up, and co-ordinated with the EMP.

Landscape Elevation B-B | 1:100 @ A1



- Legend**
- 1. Semi extensive planted roof behind on level 2 .
 - 2. Foreshore promenade public domain.
 - 3. Brick clad planters to match architecture.
 - 4. Planters rise up to give sufficient depth for mature palm and small tree planting.
 - 5. Planter extends to boundary adjacent to 1:20 ramp.
 - 6. Ramp access to building lobby behind.
 - 7. Landscape terrace planting and small trees behind. Trees grown on 1 m soil depth either with mounding or within retaining wall terraces.
 - 8. Indicative public domain planting /works subject to future discussion with Council resulting from any conditions of consent.
 - 9. Landscape terrace wall at foreshore interface nominally 600mm high to allow sufficient soil depth in planters.
 - 10. Semi extensive, non accessible planted roofs with soil heights ranging from 250mm to 550mm. soil mounded in gentle 'dune-like' forms to provide interest.
 - 11. Native plant species used that grow no higher than 750mm to enable views from level 2 terraces.
 - 12. Cascading plants used at edge of planted roof to provide greenery to inside wall of level 1 terraces.

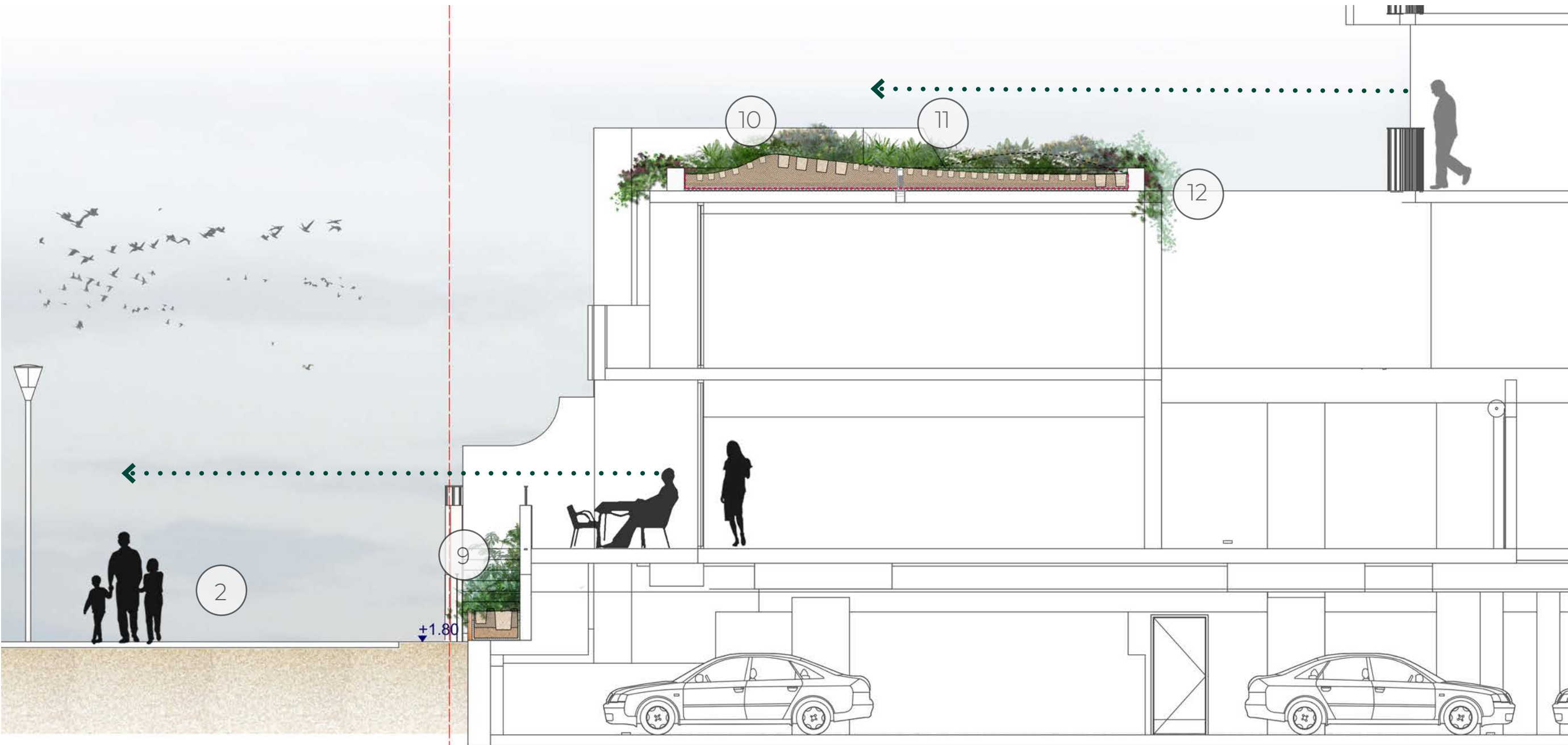


Cascading planting over wall edges.



Raised planters for tree soil depth with edge varying in height.

Landscape Elevation C-C | 1:75 @ A1

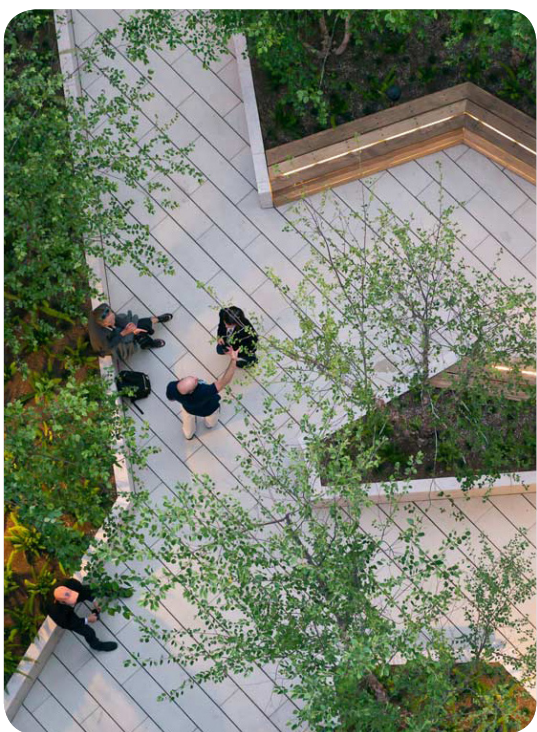


Compliance with Contamination Site Audit Statement

- Provision will be made for geofabric separation layer over existing site soils within the scope of work area;
- Minimum 300mm of approved imported soils above existing site soils will be nominated with specification and drawing detail provided from post Development Approval showing the required build-up, and co-ordinated with the Excavation Management Plan - (EMP)
- The quality of imported soils will be nominated and certified (ie from approved commercial supplier, conforming to statutory and regulatory requirements);
- Soil depth for trees should consider tree growing volume and depth (to a nominal 1m depth is sufficient for the proposed planting).



Terraced planting.



Pedestrian link with green edges.



Pedestrian link with green edges.

Landscape Elevation D-D | 1:100 @ A1



Legend

1. Access to carpark entrances. Paving to driveway in insitu concrete with a pattern treatment of exposed aggregate for non slip finish to tie in to paving pattern of pedestrian link.
2. Brick clad planter to match architecture 600mm high to ensure views to waterfront from Honeysuckle drive and prevent pedestrian access.
3. Planters rise up to give sufficient depth for mature palm and small tree planting.
4. 1200mm high planter wall at foreshore promenade.
5. Landscape planter with finishes to match those in pedestrian link.
6. Landscape terrace planting and small trees behind. Trees grown on 1m soil depth either with mounding or within retaining wall terraces.
7. Indicative public domain planting /works subject to future discussion with Council resulting from any conditions of consent.

Compliance with Contamination Site Audit Statement

- Provision will be made for geofabric separation layer over existing site soils within the scope of work area;
- Minimum 300mm of approved imported soils above existing site soils will be nominated with specification and drawing detail provided from post Development Approval showing the required build-up, and co-ordinated with the Excavation Management Plan - (EMP)
- The quality of imported soils will be nominated and certified (ie from approved commercial supplier, conforming to statutory and regulatory requirements);
- Soil depth for trees should consider tree growing volume and depth (to a nominal 1m depth is sufficient for the proposed planting).

Landscape Section E-E | 1:75 @ A1



High quality ground surface material complimenting the architecture with fine grain details.



Palm tree planting for sense of waterfront location.



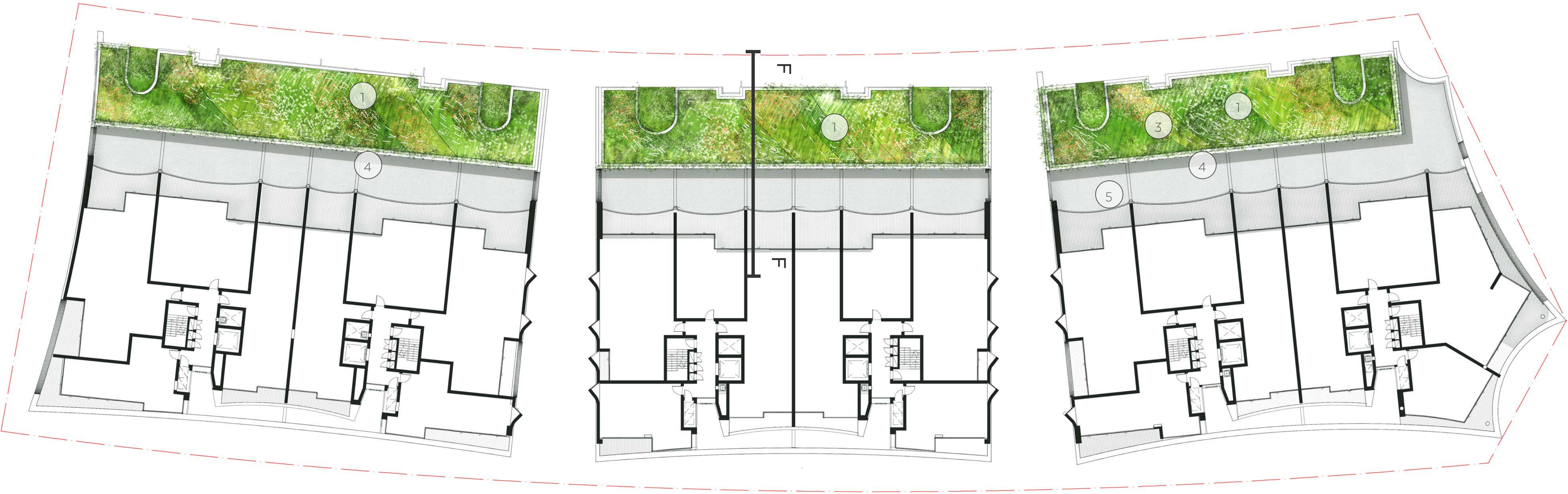
High quality landscape material for walls and raised planters to complement the architecture with fine grain details.



Suitable coastal planting for privacy and green outlook.



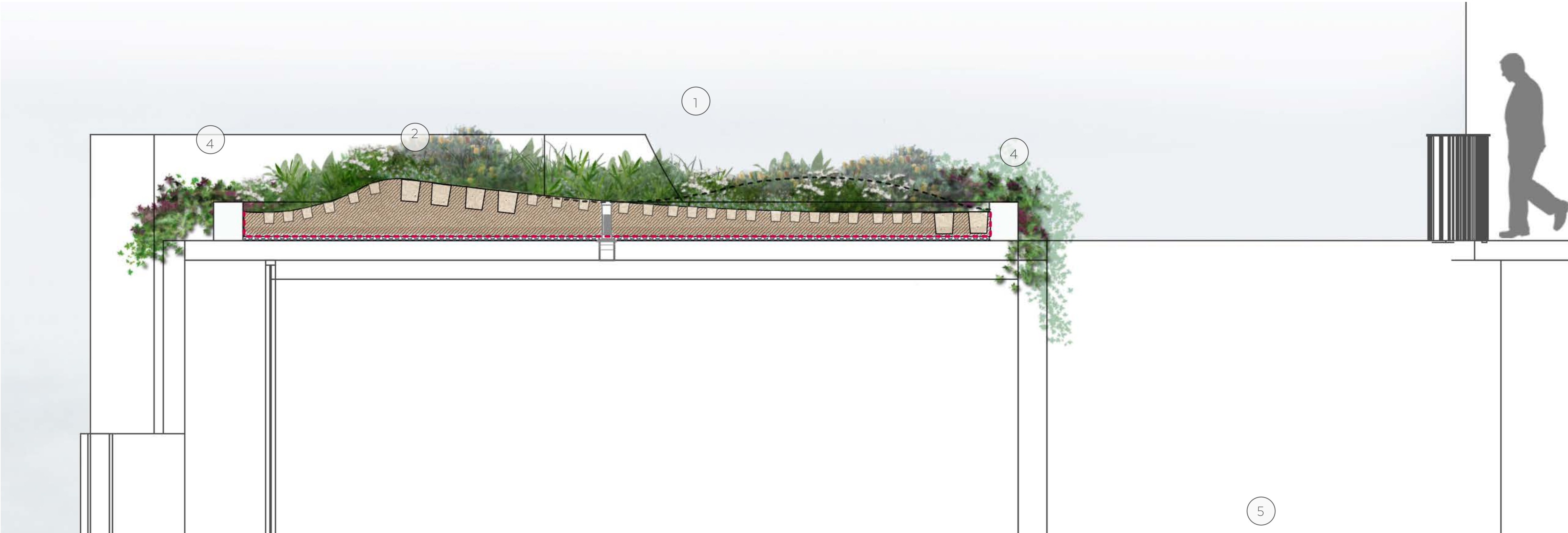
Landscape Roof Plan | 1:250 @ A1



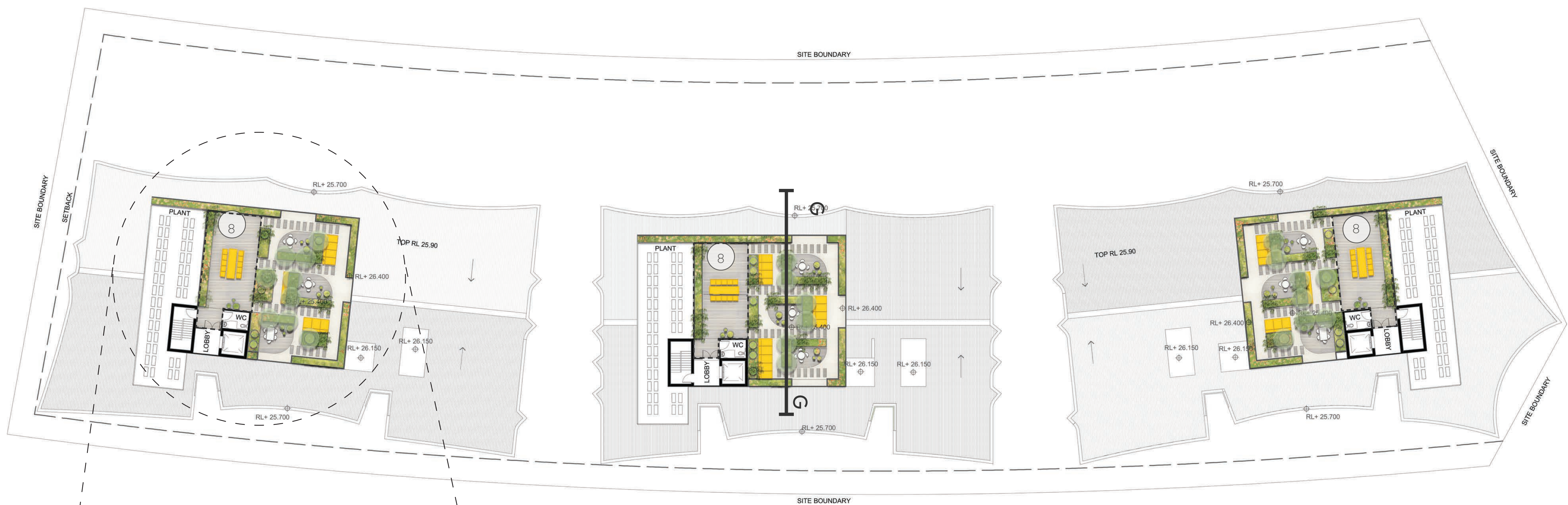
Legend

- 1. Non accessible green roofs at level 2.
- 2. Native massed planting no greater than 750mm tall with a large number of species to create greater plant diversity and planting resilience.
- 3. Species distributed in 'mixes' of 3 or more species to create subtle patterns as indicated.
- 4. Cascading plants installed at larger sizes at the edge of terraces for faster cascading of greenery.
- 5. Level 1 private terraces below.

Landscape Roof Section F-F | 1:25 @ A1

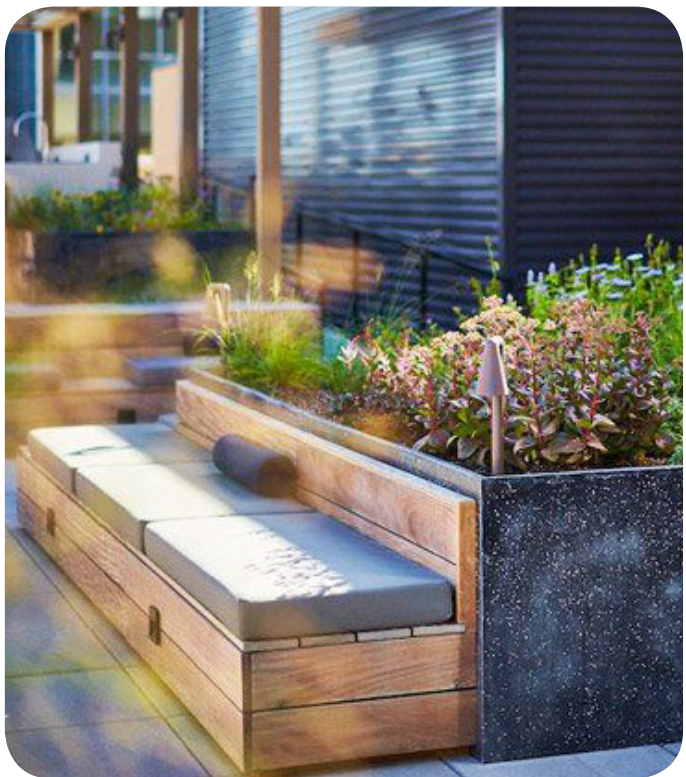


Communal Rooftops | 1:250 @ A1



Legend

1. Timber deck with communal furniture.
2. Raised planting zone to act as balustrade.
3. Planting zones.
4. Timber deck garden rooms.
5. Timber seats / lounges.
6. Loose pots with planting.
7. Timber stepping stones.
8. Pergola above by architects. Shown dashed.

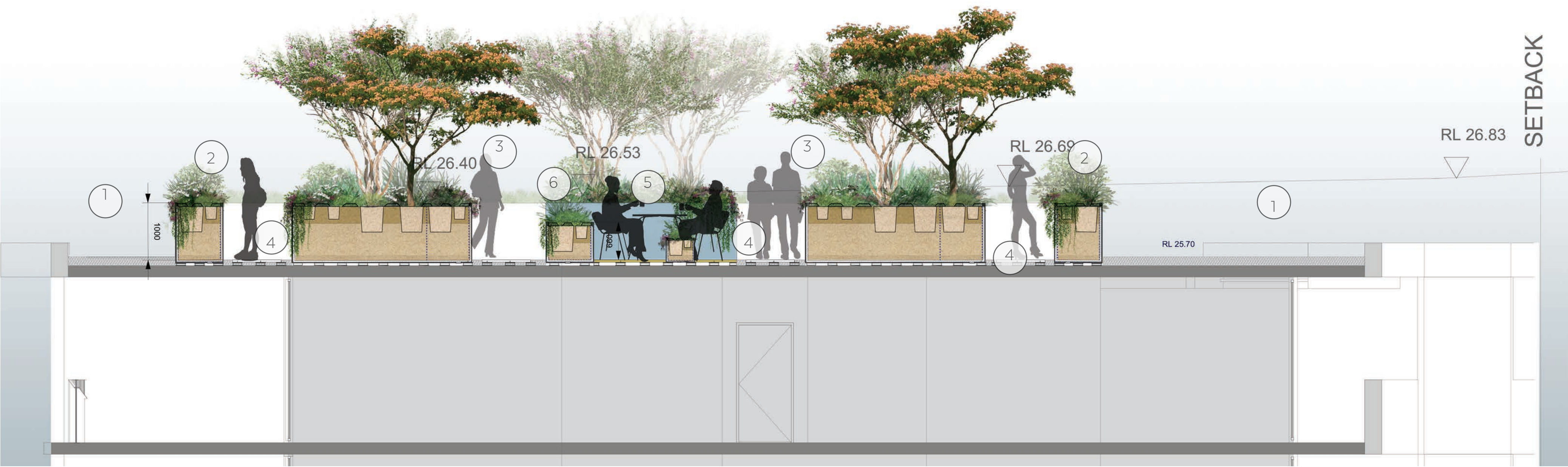


Garden rooms and furniture within planting zones.

Typical Rooftop Detail Plan | 1:150 @ A1



Typical Rooftop Section G-G | 1:50 @ A1



Legend

- 1. Gravel maintenance zone setback from palisade.
- 2. Raised planting zone to act as balustrade.
- 3. Large prefab planters for small trees.
- 4. Gravel and paver accessways
- 5. Loose pots with planting.
- 6. Timber deck

Communal Rooftops Planting



PLANT SCHEDULE - Rooftop Communal Rooftop Coastal Headland - Exposed						
CODE	BOTANICAL NAME	COMMON NAME	POT SIZE	SPACING	SCALE & CHARACTER	Indigenous to Sydney Ba
Small Trees						
	<i>Corymbia Summertime Red</i>	Summertime Red	200L	as shown	Small tree with very brightly coloured flowers	N
	<i>Metrosideros excelsa</i>	NZ Christmas Tree	200L	as shown	Small scale shrub planted closer to the apartments.	N
	<i>Olea europea</i>	Olive	200L	as shown	Attractive silver leaved hardy tree	N
Tall Shrubs						
	<i>Banksia ericifolia</i> Giant Candles	Giant Candles	45L	as shown	Large scale accent shrub	Y
	<i>Correa alba</i>	White Correa	200mm	as shown	Key, smaller shrub used for its grey foliage.	Y
	<i>Eriostemon buxifolia</i>	Box leaf Waxflower	200mm	as shown	Small accent shrub.	Y
	<i>Leucodendron Safari Sunset</i>	Safari Sunset	300mm	as shown	South African accbet pplant.	N
	<i>Metrosideros Fiji Fire</i>	Fiji Fire	45L	as shown	Glossy green shrub that can be hedged.	N
	<i>Podocarpus henkelii</i>	Japanese Yew	45L	as shown	Glossy green shrub that can be hedged.	N
	<i>Protea neriifolia</i>	Pink Ice Protea	45L	as shown	Tall hardy accent shrub with large flowers.	N
Cascading Plants						
	<i>Atriplex cinerea</i>	Saltbush	300mm	400mm	Key cascading species adaptable differing light conditions.	Cultivar of indigenous
	<i>Casuarina glauca</i> 'Cousin It'	Prostrate Casuarina	200mm	400mm	Key cascading species adaptable differing light conditions.	Cultivar of indigenous
	<i>Leptospermum juniperinum</i> 'horizontalis'	Prickly tea tree	200mm	300mm	Key cascading species exposed conditions	Cultivar of indigenous
	<i>Westringia fruticosa</i> 'Flat and Fruity'	Prostrate Coast Rosemary	200mm	400mm	Key cascading species adaptable differing light conditions.	Cultivar of indigenous
	<i>Westringia fruticosa</i> 'Aussie Box'	Coast Rosemary	200mm	as shown	Small accent shrub adjacent to apartments.	Y



Metrosideros excelsa



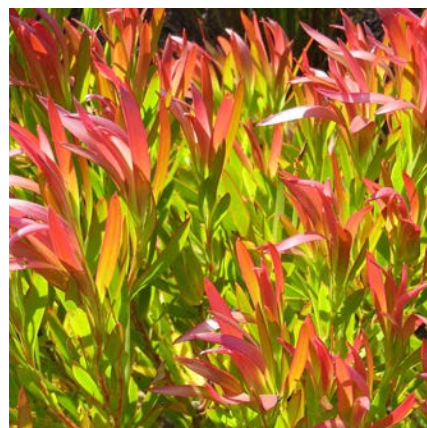
Olea europea Kalamata



Corymbia Summer Red



Banksia Giant Candles



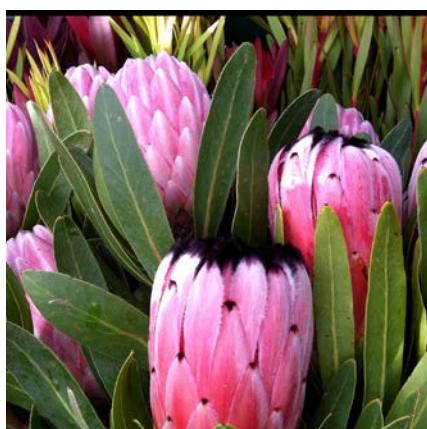
Leucodendrom Safari Sunset



Metrosideros Fiji Fire



Podocarpus henkelii



Protea neriifolia



Leptospermum Pink Cascade



Rhagodia spinescens



Rosmarinus Blue Lagoon



Casuarina Cousin It



Indicative Planting Palette

Honeysuckle Drive and Pedestrian Links



PLANT SCHEDULE GF_HONEYSUCKLE DRIVE AND PEDESTRIAN LINKS						
CODE	BOTANICAL NAME	COMMON NAME	POT SIZE	SPACING	SCALE & CHARACTER	Indigenous to Hunter Region
Trees						
	<i>Eleoecarpus eumundii</i>	Eumunds Ash	200L	as shown	Medium scale vine useful for greenery at the lower level.	N- North NSW
	<i>Glochidion ferdinandii</i>	Cheese Tree	400L	2m	Dense and glossy evergreen local rainforest tree.	Y
	<i>Howea forsteriana</i>	Kentia Palm	To size.	2m	Mixed heights of trunks 3 to 5m tall	Y
	<i>Livistona australis</i>	Cabbage Tree Palm	To size.	2m	Mixed heights of trunks 3 to 5m tall	Y
Shrubs and Perennials						
	<i>Acmena smithii</i> 'Allyn Magic'	Compact Lilly Pilli	45L	1m	Medium scale vine useful for greenery at the lower level.	Y
	<i>Allocasia macrorhiza</i>	Curjevot	25L	500mm	Large fleshy perennial.	Y
	<i>Alpinia caerulea</i>	Native Ginger	25L	500mm	Tall attractive Perennial.	Y
	<i>Eupomatia laurina</i>	Copper Laurel	45L	1m	Dense large shrub with glossy green leaves. Good alternative to the exotic Viburnum.	Y
Vines						
	<i>Aphanopetalum resinosum</i>	Water Vine	45L	400mm	Medium scale vine useful for greenery at the lower level.	Y
	<i>Cissus antarctica</i>	Kangaroo Vine	45L	400mm	Large scale vine for climbing full height and adaptable to low light conditions.	Y
	<i>Cissus hyperglauca</i>	Kangaroo Vine	45L	400mm	Large scale vine for climbing full height and adaptable to low light conditions.	Y
Low Groundcovers and Ferns						
	<i>Adiantum aethiopicum</i>	Maidenhair Fern	200mm	300mm	Small fern for low light conditions. Adaptable.	Y
	<i>Dianella tasmanica</i> 'Emerald Arch'	Emerald Arch	200mm	300mm	Cultivar with arching strap leaves for interest and form.	N
	<i>Doodia aspera</i>	Common Rasp Fern	200mm	300mm	Small fern for low light conditions and attractive form.	Y
	<i>Dichondra repens</i>	Kidney weed	200mm	300mm	Small running groundcover for matt like greenery.	Y
	<i>Pteris tremula</i>	Australian Brake Fern	200mm	300mm	Small fern for low light conditions and attractive form.	Y
	<i>Viola hederacea</i>	Native Violet	200mm	300mm	Small running groundcover for matt like greenery with dainty flowers.	Y



Glochidion ferdinandii



Acmena Allyn Magic



Howea forsteriana



Livistona australis



Eupomatia laurina



Allocasia macrorhizzia



Mollineria capitulata



Alpinia caerulea



Viola Hederacea



Doodia aspera



Adiantum aethiopicum



Aphenopetalum resinosum

Foreshore Interface



PLANT SCHEDULE GF_FORESHORE INTERFACE						
CODE	BOTANICAL NAME	COMMON NAME	POT SIZE	SPACING	SCALE & CHARACTER	Indigenous to Sydney Basi
Trees						
BS	<i>Banksia serrata</i>	Old Man Banksia	400L	as shown	Well recognised and highly adaptable small tree with sculptural form.	Y
CA	<i>Cupaniopsis anarcardioides</i>	Tuckeroo	400L	as shown	Hardy rooftop tree for exposed conditions.	Y
GF	<i>Glochidion ferdinandii</i>	Cheese Tree	600L	as shown	Small sheltered coastal tree, highly adaptable and underused in cultivation.	Y
SH	<i>Syzgium hemilampra</i>	Lilly Pilly cultivar	400L	as shown	Hardy coastal littoral rainforest tree good for rooftops.	N
Low shrubs						
	<i>Corraes baeuerlenii</i>	Chefs Cap Correa	200mm	500mm	Small scale- minor species use with attractive dark glossy leaves.	N
	<i>Hibbertia scandens</i>	Climbing Guinea flower	200mm	300mm	Small scale- minor species use. Useful small native vine.	Y
	<i>Epacris microphylla</i>	Coral heath	200mm	300mm	Small scale- minor species use. Species for planter edges.	Y
	<i>Dillwynia retorta</i>	Eggs and Bacon	200mm	500mm	Small scale- key species use	Y
	<i>Baekia virgata nana</i>	Heath Myrtle	200mm	500mm	Small scale- minor species use	Y
	<i>Correa reflexa</i>	Native Fuschia	200mm	500mm	Small scale- minor species use	Y
	<i>Eriostemon buxifolius</i>	Waxflower	200mm	500mm	Small scale- minor species use	Y
Groundcovers						
	<i>Pteridium esculentum</i>	Bracken Fern	200mm	200mm	Small scale- minor species use with attractive dark glossy leaves.	Y
	<i>Gahnia sp.</i>	Saw Sedge	200mm	300mm	Small scale- minor species use. Useful small native vine.	Y
	<i>Lomandra longifolia</i>	Matt Rush	200mm	300mm	Small scale- minor species use. Species for planter edges.	Y
	<i>Microlaena stipoides</i>	Weeping Grass	200mm	150mm	Small scale- key species use	Y
Cascading Plants						
	<i>Carpobrotus Aussie Rambler</i>	Pigface	200mm	400mm	Key cascading species, prefers the exposed northern façade	Cultivar of indigenous
	<i>Casuarina glauca</i> 'Freefall'	Prostrate Casuarina	200mm	400mm	Key cascading species adaptable differing light conditions.	Cultivar of indigenous
	<i>Westringia fruticosa</i> 'Flat and Fruity'	Prostrate Coast Rosemary	200mm	400mm	Key cascading species adaptable differing light conditions.	Cultivar of indigenous



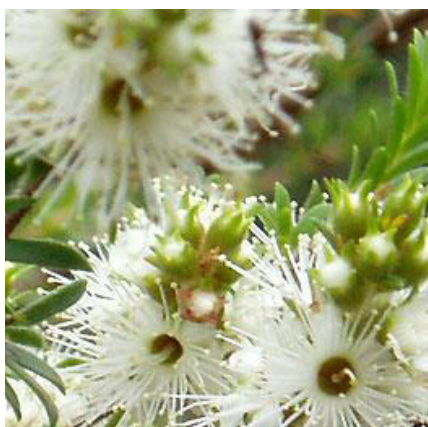
Banksia serrata



Cupaniopsis anacardioides



Syzgium hemilampra



Kunzea snowball



Correa baeuerlenii



Epacris microphylla



Dillwynia retorta



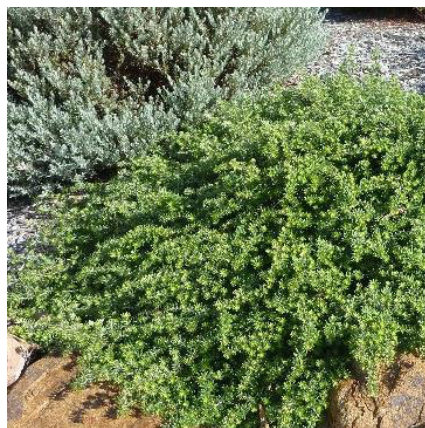
Baekia virgata nana



Correa reflexa



Eriostemon buxifolius

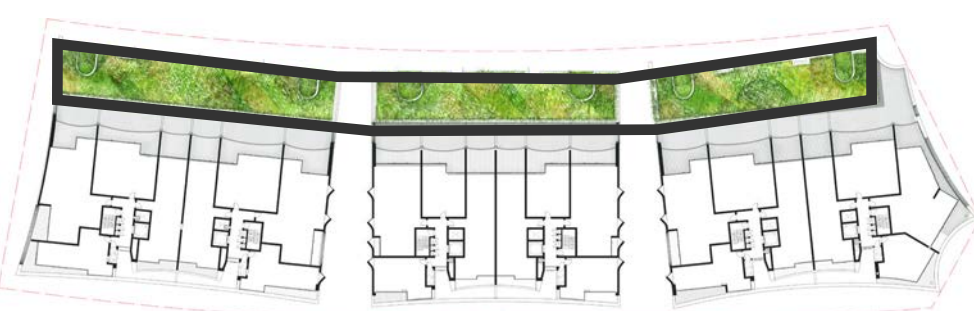


Westringia cultivar.



Lomandra cultivars

Level 2 Rooftop



PLANT SCHEDULE Level 30-Rooftop L2 Rooftop Coastal Headland - Exposed						
CODE	BOTANICAL NAME	COMMON NAME	POT SIZE	SPACING	SCALE & CHARACTER	Indigenous to Sydney Ba:
Low shrubs						
	<i>Acacia myrtillofolia</i>	Myrtle Wattle	200mm	300mm	Low shrub for intermixing	Y
	<i>Baeckea imbricata</i>	Heath Myrtle	200mm	500mm	Small scale shrub planted closer to the apartments.	Y
	<i>Banksia robur</i>	Swamp Banksia	300mm	500mm	Attractive accent shrub adjacent to apartments.	Y
	<i>Brachyloma daphnoides</i>	Daphne Heath	200mm	500mm	Small accent shrub adjacent to apartments.	Y
	<i>Calistemon rigidus</i>	Stiff Bottlebrush	200mm	500mm	Large scale accent shrub	Y
	<i>Correa alba</i>	White Correa	200mm	300mm	Key, smaller shrub used for its gery foliage.	Y
	<i>Eriostemon buxifolia</i>	Box leaf Waxflower	200mm	500mm	Small accent shrub adjacent to apartments.	Y
	<i>Hibbertia linearis</i>	Guinea flower	200mm	300mm	Small accent shrub adjacent to apartments.	Y
	<i>Leptospermum arachnoides</i>	Spidery Tea Tree	200mm	500mm	Small accent shrub adjacent to apartments.	N
	<i>Micromyrtus ciliata</i>	Heath Myrtle	200mm	500mm	Small accent shrub adjacent to apartments.	Y
	<i>Ricinocarpus pinifolius</i>	Wedding Bush	200mm	500mm	Small accent shrub adjacent to apartments.	N
	<i>Westringia fruticosa</i> 'Aussie Box'	Coast Rosemary	200mm	500mm	Small accent shrub adjacent to apartments.	Y
Groundcovers						
	<i>Darwinia fascicularis</i>	Pincushion Heath	200mm	300mm	Small scale- minor species.	Y
	<i>Epacris microphylla</i>	Coral Heath	200mm	300mm	Small scale- minor species.	Y
	<i>Pimelea linifolia</i>	Slender Riceflower	200mm	300mm	Small scale- minor species.	Y
	<i>Baumea juncea</i>	Bare twigrush	200mm	300mm	Small scale- key species	Y
	<i>Gahnia sp.</i>	Saw Sedge	200mm	300mm	Small scale- accent species.	Y
	<i>Isolepis nodosa</i>	Knobby Clubrush	200mm	300mm	Small scale- resilient species.	Y
	<i>Lomandra longifolia</i>	Matt Rush	200mm	300mm	Small scale- resilient species.	Y



Acacia baileyana prostrata



Acacia myrtillofolia



Banksia integrifolia Roller Coaster



Casuarina Cousin It



Darwinia fascicularis



Dichelachne crinita



Hibbertia fascicularis



Ficinia nodosa



Brachyloma daphnoides



Micromyrtus ciliatus



Pimelea linifolia



Westringia fruticosa